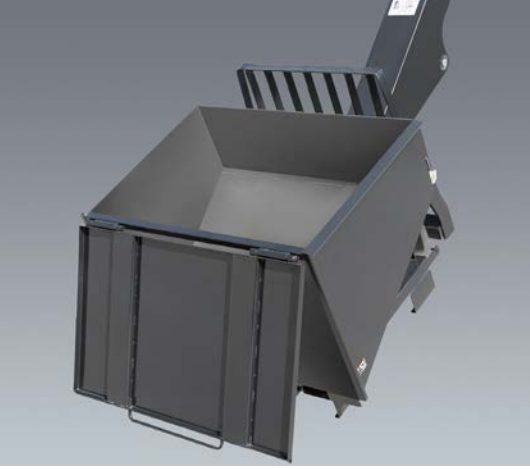




TELEHANDLER ATTACHMENT CATALOG

PIPE GRAPPLE • TRUSS BOOMS • TRASH HOPPER • WORK PLATFORMS • MATERIAL BUCKETS • SWING CARRIAGE

JLG[®]



Attachments and Forks for JLG®, Gradall, SkyTrak® and Lull Telehandlers

Attachment Catalog/Load Chart Information 4

ATTACHMENTS

Carriages

Dual Fork Positioning Carriage.....5
 Side-Shift Carriage.....7
 Side-Tilt Carriage9
 Standard Carriage.....13
 Swing Carriage18
 Tower Carriage21

Auger24

Bale Clamp25

Buckets

4-in-1 Bucket25
 Concrete Bucket26
 Fork Mounted Bucket27
 Grapple Bucket.....29
 Material Bucket31

Coupler Mounted Lifting Hook34

Fork Mounted Lifting Hook36

Fork Mounted Work Platform38

Material Handling Arm40

Pipe Grapple42

Round Fork Tines43

Sheet Material Adapter44

Sweeper46

Trash Hopper48

Truss Boom50

Universal Skid Steer Adapter54

FORKS

Forks - Pallet, Cubing, Drywall and Lumber55

Fork Pins/Bars.....64

Fork Extensions65

Fork Caliper.....67

To Place an Order

- Online: onlineexpress2.jlg.com
- Call: 1-877-JLG-LIFT (1-877-554-5438)
- Fax: 1-800-733-8939
- Email: partsprograms@jlg.com

Attachment Catalog/Load Chart Information

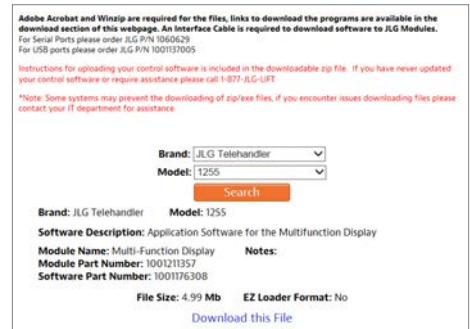
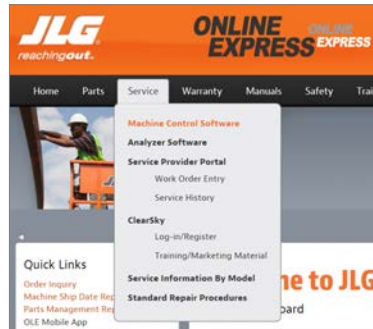
Electronic Load Charts

Electronic load charts are available only for models with optional multi-functional displays - JLG 642, 643, 1043, 1055 and 1255 ONLY.

Please follow step-by-step instructions below to download latest load chart software for in-dash display.

Instructions to Download from Online Express

- Click **Service** in the navigation menu on Online Express
- Click **Machine Control Software**
- Select **Brand** from drop down menu
- Select **Model** from drop down menu
- Click **Search**
- Look for software description relevant to the machine (lifting lug/no lifting lug, ANSI/Metric)
- Click **Download this File**



1001187087 is a reference number only - It is not an orderable load chart part number.

An Interface cable is required to download software to JLG Modules.

The display must have a P2.0 or later software to use the Trash Hopper chart.

For any load charts not listed - Please call the parts contact center for assistance

Important Reminders

- Use only JLG approved attachments with proper material handler model/attachment load capacity charts displayed in the operator's cab.
- Never use your attachment as a work platform or personnel carrier.

Can't find what you're looking for?

Contact the Aftermarket Parts Team at 877-jlg-lift (877-554-5438) or visit online at www.jlg.com.

Dual Fork Positioning Carriage

The dual fork positioning carriage allows the operator to adjust the width between the forks without leaving the cab.

Features

- Dual fork positioning carriages require auxiliary hydraulics
- Standard up-and-down tilt on horizontal plane
- Dual fork positioning carriage is not compatible with fork mounted attachments.



Current Production - Dual Fork Positioning Carriages
Available Through JLG Aftermarket Or With New Machine Orders

CARRIAGE SIZE			50 in.	50 in.
APPROX. WEIGHT			1090 lbs.	1202 lbs.
INCLUDED FORK LENGTH			48 in.	48 in.
PART NO.			7301295S	1001189211S
FORK PIN NO.			90451058	70027283
MODEL	SN BREAKS	LOAD CHART BOOKLET		
JLG	642, 943, 1043, 1055, 1255 ONLY	Software, Chart Library	1001187087 (Ref No.)	
	642	Without Outriggers	1001212421	•
		With Outriggers	1001203057	•
	943/1043	Without Outriggers	1001212420	•
		With Outriggers	1001212419	•
	1055	Prior To 0160074169	1001212227	•
		0160074169 - Present	1001211156	•
	1255	Prior To 0160074168	1001212225	•
		0160074168 - Present	1001211153	•
	G15-44A	Prior To 0160074142	1001194130	•
		0160074142 - Present	1001211953	•
	SKYTRAK T4F	6036	0160069720 - 0160075649, incl 0160065792, 0160065798, 0160065824, 0160069383, 0160069411, 0160075653 & 0160075722	1001199500
0160075650 - Present, excl 0160075653 & 0160075722			1001211867	•
6042		0160069720 - 0160075656, incl 0160065792, 0160065798, 0160065824, 0160069383 & 0160069411	1001199504	•
		0160075657 - Present	1001211869	•
8042		0160069722 - 0160075670, incl 0160065791, 0160065796, 0160065825, 0160065826, 0160069336, 0160069359 & 0160069441	1001199508	•
		0160075671 - Present	1001211871	•
10042		0160069722 - 0160075987, incl 0160065791, 0160065796, 0160065825, 0160065826, 0160069336, 0160069359 & 0160069441	1001199512	•
		0160075988 - Present	1001211873	•
10054		0160069722 - 0160075682, incl 0160065791, 0160065796, 0160065825, 0160065826, 0160069336, 0160069359, 0160069441 & 0160075696	1001199518	•
		0160075683 - Present, excl 0160075696	1001211875	•

For SkyTrak Legacy machines, please refer to Non-Current Production SkyTrak table.

NOTES:

- Use only JLG approved attachments with proper material handler model/attachment load capacity charts displayed in the operator's cab.
 - Never use your attachment as a work platform or personnel carrier.
- Can't find the attachment you are looking for? Contact your JLG Aftermarket Parts representative at 1-877-JLG-LIFT or visit www.jlg.com.

ATTACHMENTS

Non-Current Production - Dual Fork Positioning Carriage
Available Through JLG Aftermarket Parts

CARRIAGE SIZE			50 in.	50 in.
APPROX. WEIGHT			1000 lbs.	1090 lbs.
INCLUDED FORK LENGTH			42 in.	48 in.
PART NO.			10448045	7301295S
FORK PIN NO.			10165685	90451058
MODEL	SN BREAKS	LOAD CHART BOOKLET		
JLG	G6-42A	0160037722 - 0160040659	1001110401	•
		0160040678 - Present	1001130739	•
	G9-43A	0160037671 - 0160040674, excl 0160040468 & 0160040672	1001110402	•
		0160040675 - Present, incl 0160040468 & 0160040672	1001130708	•
	G10-43A	0160037671 - 0160040674, excl 0160040468 & 0160040672	1001115257	•
		0160040675 - Present, incl 0160040468 & 0160040672	1001130844	•
G10-55A	0160037690 - Present, incl 0160038505, 0160038507, 0160038324, 016003489 & 0160038493	1001115138	•	
G12-55A	0160037689 - Present	1001115540	•	
SKYTRAK LEGACY	6036	0160031200 - 0160069719, excl 0160065792, 0160065798, 0160065824, 0160069383 & 0160069411	1001199500	•
	6042	0160031200 - 0160069719, excl 0160065792, 0160065798, 0160065824, 0160069383 & 0160069411	1001199504	•
	8042	0160031235 - 0160069721, excl 0160065791, 0160065796, 0160065825, 0160065826, 0160069336, 0160069359 & 0160069441	1001199508	•
	10042	0160031425 - 0160069721, excl 0160065791, 0160065796, 0160065825, 0160065826, 0160069336, 0160069359 & 0160069441	1001199512	•
	10054	0160031255 - 0160069721, excl 0160065791, 0160065796, 0160065825, 0160065826, 0160069336, 0160069359 & 0160069441	1001199518	•
LULL	1044C-42	ALL	Consult Factory	•
	1044C-54	ALL	Consult Factory	•
	644E-42	Prior To 0160031500	7300628	•
	644E-42	0160037900 - Present	1001110410	•
	944E-42	Prior To 0160031500	7301586	•
	944E-42	0160037794 - Present, incl 0160045421	1001110411	•
	1044C-54 SII	Prior To 0160037893	1001105327	•
	1044C-54 SII	0160037794 - Present	1001110409	•

NOTES:

- Use only JLG approved attachments with proper material handler model/attachment load capacity charts displayed in the operator's cab.
 - Never use your attachment as a work platform or personnel carrier.
- Can't find the attachment you are looking for? Contact your JLG Aftermarket Parts representative at 1-877-JLG-LIFT or visit www.jlg.com.

Side-Shift Carriage

The side-shift carriage allows the operator to move the load left or right for precise placement.

Features

- Side-shift carriages require auxiliary hydraulics
- Standard up-and-down tilt on horizontal plane



Current Production - Side-Shift Carriages

Available Through JLG Aftermarket Or With New Machine Orders

CARRIAGE SIZE			50 in.	50 in.
APPROX. WEIGHT			898 lbs.	930 lbs.
PART NO.			1001193799	1001142790
FORK PIN NO.			N/A	N/A
MODEL	SN BREAKS	LOAD CHART BOOKLET		
JLG	642, 943, 1043, 1055, 1255 ONLY	Software, Chart Library	1001187087 (Ref No.)	
	642	Without Outriggers	1001212421	•
		With Outriggers	1001203057	•
	943/1043	Without Outriggers	1001212420	•
		Without Outriggers	1001212419	•
	1055	Prior To 0160074169	1001212227	•
		0160074169 - Present	1001211156	•
	1255	Prior To 0160074168	1001212225	•
		0160074168 - Present	1001211153	•
	G15-44A	Prior To 0160074142	1001194130	•
		0160074142 - Present	1001211953	•
	SKYTRAK T4F	6036	0160069720 - 0160075649, incl 0160065792, 0160065798, 0160065824, 0160069383, 0160069411, 0160075653 & 0160075722	1001199500
0160075650 - Present, excl 0160075653 & 0160075722			1001211867	•
6042		0160069720 - 0160075656, incl 0160065792, 0160065798, 0160065824, 0160069383 & 0160069411	1001199504	•
		0160075657 - Present	1001211869	•
8042		0160069722 - 0160075670, incl 0160065791, 0160065796, 0160065825, 0160065826, 0160069336, 0160069359 & 0160069441	1001199508	•
		0160075671 - Present	1001211871	•
10042		0160069722 - 0160075987, incl 0160065791, 0160065796, 0160065825, 0160065826, 0160069336, 0160069359 & 0160069441	1001199512	•
		0160075988 - Present	1001211873	•
10054		0160069722 - 0160075682, incl 0160065791, 0160065796, 0160065825, 0160065826, 0160069336, 0160069359, 0160069441 & 0160075696	1001199518	•
		0160075683 - Present, excl 0160075696	1001211875	•

For SkyTrak Legacy machines, please refer to Non-Current Production SkyTrak table.

*Used with Universal Quick Switch (Skid Steer) Coupler.

NOTES:

- Use only JLG approved attachments with proper material handler model/attachment load capacity charts displayed in the operator's cab.
- Never use your attachment as a work platform or personnel carrier.

Can't find the attachment you are looking for? Contact your JLG Aftermarket Parts representative at 1-877-JLG-LIFT or visit www.jlg.com.

ATTACHMENTS

Non-Current Production - Side-Shift Carriages Available Through JLG Aftermarket Parts

CARRIAGE SIZE			48 in.	50 in.	50 in.
APPROX. WEIGHT			768 lbs.	930 lbs.	905 lbs.
PART NO.			1001104025*	1001142790	1170002
FORK PIN NO.			70022105	N/A	7028136
MODEL	SN BREAKS	LOAD CHART BOOKLET			
JLG	G5-18A	With the Universal (skid steer) quick coupler 0160040809 - Present	1001126677	.	
	G6-42A	0160037722 - 0160040659	1001110401	.	
		0160040678 - Present	1001130739	.	
	G9-43A	0160037671 - 0160040674, excl 0160040468 & 0160040672	1001110402	.	
		0160040675 - Present, incl 0160040468 & 0160040672	1001130708	.	
	G10-43A	0160037671 - 0160040674, excl 0160040468 & 0160040672	1001115257	.	
		0160040675 - Present, incl 0160040468 & 0160040672	1001130844	.	
	G10-55A	0160037690 - Present, incl 0160038505, 0160038507, 0160038324, 0160038489 & 0160038493	1001115138	.	
	G12-55A	0160037689 - Present	1001115540	.	
	G5-19A	ALL	1706970		.
	G6-23A	ALL	1706975		.
	619A	ALL	Consult Factory		.
723A	ALL	Consult Factory		.	
SKYTRAK LEGACY	6036	0160031200 - 0160069719, excl 0160065792, 0160065798, 0160065824, 0160069383 & 0160069411	1001199500	.	
	6042	0160031200 - 0160069719, excl 0160065792, 0160065798, 0160065824, 0160069383 & 0160069411	1001199504	.	
	8042	0160031235 - 0160069721, excl 0160065791, 0160065796, 0160065825, 0160065826, 0160069336, 0160069359 & 0160069441	1001199508	.	
	10042	0160031425 - 0160069721, excl 0160065791, 0160065796, 0160065825, 0160065826, 0160069336, 0160069359 & 0160069441	1001199512	.	
	10054	0160031255 - 0160069721, excl 0160065791, 0160065796, 0160065825, 0160065826, 0160069336, 0160069359 & 0160069441	1001199518	.	
LULL	644E-42	0160037900 - Present	1001106009	.	
	944E-42	0160037794 - Present, incl 0160045421	1001134329	.	
	1044C-54 SII	0160037794 - Present	1001106011	.	

* Used with Universal Quick Switch (Skid Steer) Coupler.

NOTES:

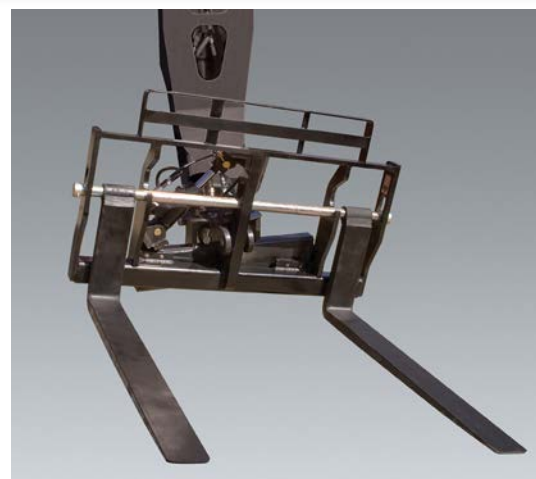
- Use only JLG approved attachments with proper material handler model/attachment load capacity charts displayed in the operator's cab.
 - Never use your attachment as a work platform or personnel carrier.
- Can't find the attachment you are looking for? Contact your JLG Aftermarket Parts representative at 1-877-JLG-LIFT or visit www.jlg.com.

Side-Tilt Carriage

Adding to the versatility of the telehandler, the side-tilt carriage keeps the load level even when the terrain isn't. The carriage tilts loads from side-to-side to allow for uneven landing areas like a roof or sloped bank.

Features

- Side-to-side tilt on vertical plane
 - +/- 10 degrees on SkyTrak or Lull
 - +/- 10 degrees on JLG or Gradall
- Load or unload at any angle



Current Production - Side-Tilt Carriages

Available Through JLG Aftermarket Or With New Machine Orders

CARRIAGE SIZE			50 in.	50 in.	60 in.	60 in.	72 in.	72 in.
APPROX. WEIGHT			343 lbs.	942 lbs.	472 lbs.	1022 lbs.	677 lbs.	1088 lbs.
PART NO.			11700545	1001182951	10011019565	1001182952	11700575	1001182953
FORK PIN NO.			3423275	70024090	3423242	70027282	3423276	70026704
MODEL	SN BREAKS	LOAD CHART BOOKLET						
JLG	642, 943, 1043, 1055, 1255 ONLY	Software, Chart Library	1001187087 (Ref No.)					
	642	Without Outriggers	1001212421	•	•	•	•	
		With Outriggers	1001203057	•	•	•	•	
	943/1043	Without Outriggers	1001212420	•	•	•	•	
		With Outriggers	1001212419	•	•	•	•	
	1055	Prior To 0160074169	1001212227	•	•	•	•	
		0160074169 - Present	1001211156	•	•	•	•	
	1255	Prior To 0160074168	1001212225		•		•	•
		0160074168 - Present	1001211153		•		•	•
	G15-44A	Prior To 0160074142	1001194130					•
		0160074142 - Present	1001211953					•
	SKYTRAK T4F	6036	0160069720 - 0160075649, incl 0160065792, 0160065798, 0160065824, 0160069383, 0160069411, 0160075653 & 0160075722	1001199500	•	•	•	•
0160075650 - Present, excl 0160075653 & 0160075722			1001211867	•	•	•	•	
6042		0160069720 - 0160075656, incl 0160065792, 0160065798, 0160065824, 0160069383 & 0160069411	1001199504	•	•	•	•	
		0160075657 - Present	1001211869	•	•	•	•	
8042		0160069722 - 0160075670, incl 0160065791, 0160065796, 0160065825, 0160065826, 0160069336, 0160069359 & 0160069441	1001199508	•	•	•	•	
		0160075671 - Present	1001211871	•	•	•	•	
10042		0160069722 - 0160075987, incl 0160065791, 0160065796, 0160065825, 0160065826, 0160069336, 0160069359 & 0160069441	1001199512	•	•	•	•	
		0160075988 - Present	1001211873	•	•	•	•	
10054		0160069722 - 0160075682, incl 0160065791, 0160065796, 0160065825, 0160065826, 0160069336, 0160069359, 0160069441 & 0160075696	1001199518	•	•	•	•	
		0160075683 - Present, excl 0160075696	1001211875	•	•	•	•	

For SkyTrak Legacy machines, please refer to Non-Current Production SkyTrak table.

* Used with Universal Quick Switch (Skid Steer) Coupler.

NOTES:

- Use only JLG approved attachments with proper material handler model/attachment load capacity charts displayed in the operator's cab.
- Never use your attachment as a work platform or personnel carrier.

Can't find the attachment you are looking for? Contact your JLG Aftermarket Parts representative at 1-877-JLG-LIFT or visit www.jlg.com.

ATTACHMENTS

Non-Current Production - Side-Tilt Carriages, JLG Available Through JLG Aftermarket Parts

CARRIAGE SIZE			48 in.	48 in.	50 in.	60 in.	72 in.	48 in.	48 in.	72 in.
APPROX. WEIGHT			660 lbs.	817 lbs.	343 lbs.	472 lbs.	677 lbs.	763 lbs.	607 lbs.	948 lbs.
PART NO.			1001102331	1001104009	1170054S	1001101956S	1170057S	91405101	1170046	91405079
FORK PIN NO.			70021339	70022105	3423275	3423242	3423276	91401303	(2) 4040283	91401324
MODEL	SN BREAKS	LOAD CHART BOOKLET								
G5-18A	Universal (skid steer) quick coupler 0160040809 - Present	1001126677*		.						
	Quick coupler (hydraulic or manual)	1001102000	.							
G5-19A	ALL	Consult Factory							.	
G19A	ALL	Consult Factory							.	
G6-23A	ALL	Consult Factory							.	
G23A	ALL	Consult Factory							.	
G6-42A	Prior To 0160037722	1001105323						.		.
	0160037722 - 0160040659	1001106001			.	.	.			
	0160040678 - Present	1001130793			.	.	.			
G9-43A	Prior To 0160037671	1001105325						.		.
	0160037671 - 0160040674, excl 0160040468 & 0160040672	1001106002			.	.	.			
	0160040675 - Present, incl 0160040468 & 0160040672	1001130663			.	.	.			
G10-43A	Prior To 0160037671	1001130935						.		.
	0160037671 - 0160040674, excl 0160040468 & 0160040672	100113013			.	.	.			
	0160040675 - Present, incl 0160040468 & 0160040672	1001130935			.	.	.			
G10-55A	Prior To 0160037689	1001105707						.		.
	0160037690 - 0160038486, incl 0160038505 & 0160038507, excl 0160038324, 0160038489 & 0160038493	1001106003			.	.	.			
	0160038500 - Present, incl 0160038324, 0160038489 & 0160038493, excl 0160038505 & 0160038507	1001115135			.	.	.			
G12-55A	Prior To 0160037689	1001105326						.		.
	0160037689 - 0160038533	1001106004			.	.	.			
	0160038538 - Present	1001115536			.	.	.			
TF6-42	ALL	Consult Factory						.	.	

* Used with Universal Quick Switch (Skid Steer) Coupler.

NOTES:

- Use only JLG approved attachments with proper material handler model/attachment load capacity charts displayed in the operator's cab.
- Never use your attachment as a work platform or personnel carrier.

Can't find the attachment you are looking for? Contact your JLG Aftermarket Parts representative at 1-877-JLG-LIFT or visit www.jlg.com.

Non-Current Production - Side-Tilt Carriages, Gradall

Available Through JLG Aftermarket Parts

CARRIAGE SIZE			48 in.	48 in.	50 in.	60 in.	66 in.	72 in.	72 in.
APPROX. WEIGHT			763 lbs.	700 lbs.	343 lbs.	472 lbs.	820 lbs.	948 lbs.	677 lbs.
PART NO.			91405101	91085058	11700545	10011019565	91305016	91405079	11700575
FORK PIN NO.			91401303	90451058	3423275	3423242	91301083	91401324	3423276
MODEL	SN BREAKS	LOAD CHART BOOKLET							
GRADALL	G6-42P	Prior To 0160037689	1001105324	.				.	
		0160037689 - Present	1001106005		.	.			.
	522D/524D	ALL	Consult Factory		.		.		
	534D-6	ALL	Consult Factory		.		.		
	534D-9	Prior To 0160037689	1001102719		.		.		
		0160037689 - Present	1001112753		.	.			.
	534D-10	Prior To 0160037689	1001102720		.		.		
		0160037689 - Present	1001112753		.	.			.
	544D	Prior To 0160037689	1001102721		.		.		
		0160037689 - Present	1001106008		.	.			.
	534C-9	ALL	Consult Factory		.		.		
	544C	ALL	Consult Factory		.		.		

Non-Current Production - Side-Tilt Carriages, SkyTrak Legacy

Available Through JLG Aftermarket Parts

CARRIAGE SIZE			50 in.	60 in.	72 in.	48 in.	60 in.	72 in.
APPROX. WEIGHT			343 lbs.	472 lbs.	677 lbs.	640 lbs.	1047 lbs.	800 lbs.
PART NO.			11700545	10011019565	11700575	7134400	7134500	7134600
FORK PIN NO.			3423275	3423242	3423276	7128772	7128792	90551013
MODEL	SN BREAKS	LOAD CHART BOOKLET						
SKYTRAK LEGACY	6036	Prior To 0160031200	Consult Factory			.	.	.
		0160031200 - 0160069719, excl 0160065792, 0160065798, 0160065824, 0160069383 & 0160069411	1001199500	.	.	.		
	6042	Prior To 0160031200	Consult Factory			.	.	.
		0160031200 - 0160069719, excl 0160065792, 0160065798, 0160065824, 0160069383 & 0160069411	1001199504	.	.	.		
	8042	Prior To 0160031235	Consult Factory			.	.	.
		0160031235 - 0160069721, excl 0160065791, 0160065796, 0160065825, 0160065826, 0160069336, 0160069359 & 0160069441	1001199508	.	.	.		
	10042	Prior To 0160031425	Consult Factory			.	.	.
		0160031425 - 0160069721, excl 0160065791, 0160065796, 0160065825, 0160065826, 0160069336, 0160069359 & 0160069441	1001199512	.	.	.		
	10054	Prior To 0160031255	Consult Factory			.	.	.
		0160031255 - 0160069721, excl 0160065791, 0160065796, 0160065825, 0160065826, 0160069336, 0160069359 & 0160069441	1001199518	.	.	.		
	4266	ALL	Consult Factory			.	.	.
	4270	ALL	Consult Factory			.	.	.
	4290	ALL	Consult Factory			.	.	.
	5028	ALL	Consult Factory			.	.	.

* Used with Universal Quick Switch (Skid Steer) Coupler.

NOTES:

- Use only JLG approved attachments with proper material handler model/attachment load capacity charts displayed in the operator's cab.

- Never use your attachment as a work platform or personnel carrier.

Can't find the attachment you are looking for? Contact your JLG Aftermarket Parts representative at 1-877-JLG-LIFT or visit www.jlg.com.

ATTACHMENTS

Non-Current Production - Side-Tilt Carriages, Lull

Available Through JLG Aftermarket Parts

CARRIAGE SIZE			50 in.	60 in.	72 in.	48 in.	50 in.	50 in.	60 in.	72 in.	74 in.	74 in.
APPROX. WEIGHT			343 lbs.	472 lbs.	677 lbs.	640 lbs.	678 lbs.	844 lbs.	1047 lbs.	800 lbs.	920 lbs.	1028 lbs.
PART NO.			1170054S	1001101956S	1170057S	7134400	7161300	48041	7134500	7134600	48043	48003
FORK PIN NO.			3423275	3423242	3423276	7128772	90451058	10223049	7128792	90551013	10124495	10116207
MODEL	SN BREAKS	LOAD CHART BOOKLET										
LULL	644E-42	Prior To 0160031500	7300628				•	•		•	•	
		0160037900 - Present	1001106009	•	•	•						
	944E-42	Prior To 0160031500	7301586				•	•		•	•	
		0160037794 - Present, incl 0160045421	1001134329	•	•	•						
	1044C-54 SII	Prior To 0160037893	1001105327						•			•
		0160037794 - Present	1001106011	•	•	•						
	644B-37	ALL	Consult Factory						•			•
	644B-42	ALL	Consult Factory						•			•
	844C-42	ALL	Consult Factory						•			•
	6K-37	ALL	Consult Factory						•			•
	6K-42	ALL	Consult Factory						•			•
	8K-42	ALL	Consult Factory						•			•
	10K-42/10K-54	ALL	Consult Factory						•		•	
	644D-34	ALL	Consult Factory						•			•

NOTES:

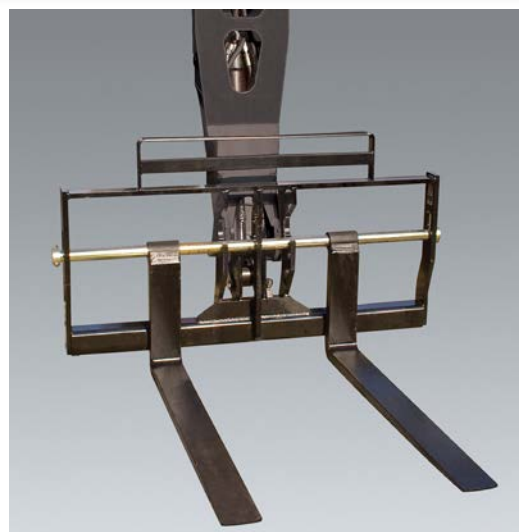
- Use only JLG approved attachments with proper material handler model/attachment load capacity charts displayed in the operator's cab.
 - Never use your attachment as a work platform or personnel carrier.
- Can't find the attachment you are looking for? Contact your JLG Aftermarket Parts representative at 1-877-JLG-LIFT or visit www.jlg.com.

Standard Carriage

The standard carriage is manufactured with high quality steel and is available in various sizes. This attachment is essential on most job sites, allowing operators to pick and place materials – from pallets of concrete block to loads of lumber.

Features

- Standard up-and-down tilt on horizontal plane
- Multiple fork options
- Available with 8000 lb. lifting hook for most current production applications



Current Production - Standard Carriages

Available Through JLG Aftermarket Or With New Machine Orders

CARRIAGE SIZE			50 in.	60 in.	60 in.	72 in.	72 in.	72 in.
LIFTING LUG			Yes	Yes	Yes	Yes	Yes	No
APPROX. WEIGHT			478 lbs.	503 lbs.	548 lbs.	639 lbs.	639 lbs.	639 lbs.
PART NO.			1001146084S**	1001146086S**	1001192915**	1001146088S**	1001193794S	1001211516S
FORK PIN NO.			3423275	3423242	3423242	3423276	3423276	3223276
MODEL	SN BREAKS	LOAD CHART BOOKLET						
JLG	642, 943, 1043, 1055, 1255 ONLY	Software, Chart Library	1001187087 (Ref No.)					
	642	Without Outriggers	1001212421	•	•	•		
		With Outriggers	1001203057	•	•	•		
	943/1043	Without Outriggers	1001212420	•	•	•		
		With Outriggers	1001212419	•	•	•		
	1055	Prior To 0160074169	1001212227	•	•		•	
		0160074169 - Present	1001211156	•	•		•	
	1255	Prior To 0160074168	1001212225	•	•		•	
		0160074168 - Present	1001211153	•	•		•	
	G15-44A	Prior To 0160074142	1001194130			•	•	
		0160074142 - Present	1001211953			•	•	
	SKYTRAK™	6036	0160069720 - 0160075649, incl 0160065792, 0160065798, 0160065824, 0160069383, 0160069411, 0160075653 & 0160075722	1001199500	•	•	•	•
0160075650 - Present, excl 0160075653 & 0160075722			1001211867	•	•	•	•	
6042		0160069720 - 0160075656, incl 0160065792, 0160065798, 0160065824, 0160069383 & 0160069411	1001199504	•	•	•	•	
		0160075657 - Present	1001211869	•	•	•	•	

For SkyTrak Legacy machines, please refer to Non-Current Production SkyTrak table.

Continues on next page

* Used with optional Skid Steer Coupler.

** May require purchase of new load chart booklet on some models.

NOTES:

- Use only JLG approved attachments with proper material handler model/attachment load capacity charts displayed in the operator's cab.

- Never use your attachment as a work platform or personnel carrier.

Can't find the attachment you are looking for? Contact your JLG Aftermarket Parts representative at 1-877-JLG-LIFT or visit www.jlg.com.

ATTACHMENTS

Current Production - Standard Carriages

Available Through JLG Aftermarket Or With New Machine Orders

Continued from previous page

CARRIAGE SIZE			50 in.	60 in.	60 in.	72 in.	72 in.	72 in.
LIFTING LUG			Yes	Yes	Yes	Yes	Yes	No
APPROX. WEIGHT			478 lbs.	503 lbs.	548 lbs.	639 lbs.	639 lbs.	639 lbs.
PART NO.			1001146084S**	1001146086S**	1001192915**	1001146088S**	1001193794S	1001211516S
FORK PIN NO.			3423275	3423242	3423242	3423276	3423276	3223276
MODEL	SN BREAKS	LOAD CHART BOOKLET						
SKYTRAK™ T4F	8042	0160069722 - 0160075670, incl 0160065791, 0160065796, 0160065825, 0160065826, 0160069336, 0160069359 & 0160069441	1001199508
		0160075671 - Present	1001211871
	10042	0160069722 - 0160075987, incl 0160065791, 0160065796, 0160065825, 0160065826, 0160069336, 0160069359 & 0160069441	1001199512
		0160075988 - Present	1001211873
	10054	0160069722 - 0160075682, incl 0160065791, 0160065796, 0160065825, 0160065826, 0160069336, 0160069359, 0160069441 & 0160075696	1001199518
		0160075683 - Present, excl 0160075696	1001211875

For SkyTrak Legacy machines, please refer to Non-Current Production SkyTrak table.

Non-Current Production - Standard Carriages, JLG

Available Through JLG Aftermarket Parts

CARRIAGE SIZE			50 in.	50 in.	50 in.	50 in.	60 in.	60 in.	72 in.	72 in.	48 in.	48 in.	50 in.	
LIFTING LUG			No	No	No	Yes	No	Yes	No	Yes	No	No	No	
APPROX. WEIGHT			460 lbs.	526 lbs.	471 lbs.	478 lbs.	497 lbs.	503 lbs.	634 lbs.	639 lbs.	417 lbs.	377 lbs.	479 lbs.	
PART NO.			1001104435	1001113038S*	1170021S	1001146084S**	1170024S	1001146086S**	1001132514S	1001146088S**	1001112618	1001107581	1170019S	
FORK PIN NO.			3423275	3423275	3423275	3423275	3423242	3423242	3423276	3423276	(2) 4040283	1001107336	3423275	
MODEL	SN BREAKS	LOAD CHART BOOKLET												
JLG	619A	ALL	Consult Factory	.							.			
	723A	ALL	Consult Factory	.							.			
	G5-18A	Quick coupler (hydraulic or manual)	1001102000	.	.									
	G5-18A	Universal (skid steer) quick coupler Prior To 0160040809	1001126677	.	.									
	G5-19A	ALL	Consult Factory								.	.		
	G6-23A	ALL	Consult Factory								.	.		
	G6-42A	Prior To 0160037722	1001105323											.
		0160037722 - 0160040659	1001106001				
		0160040678 - Present	1001130793				
	G9-43A	Prior To 0160037671	1001105325	

Continues on next page

* Used with optional Skid Steer Coupler.

** May require purchase of new load chart booklet on some models.

NOTES:

- Use only JLG approved attachments with proper material handler model/attachment load capacity charts displayed in the operator's cab.
 - Never use your attachment as a work platform or personnel carrier.
- Can't find the attachment you are looking for? Contact your JLG Aftermarket Parts representative at 1-877-JLG-LIFT or visit www.jlg.com.

Non-Current Production - Standard Carriages, JLG
Available Through JLG Aftermarket Parts

Continued from previous page

CARRIAGE SIZE			50 in.	50 in.	50 in.	50 in.	60 in.	60 in.	72 in.	72 in.	48 in.	48 in.	50 in.	
LIFTING LUG			No	No	No	Yes	No	Yes	No	Yes	No	No	No	
APPROX. WEIGHT			460 lbs.	526 lbs.	471 lbs.	478 lbs.	497 lbs.	503 lbs.	634 lbs.	639 lbs.	417 lbs.	377 lbs.	479 lbs.	
PART NO.			1001104435	1001113038 [*]	11700215	10011460845 ^{**}	11700245	10011460865 ^{**}	10011325145	10011460885 ^{**}	1001112618	1001107581	11700195	
FORK PIN NO.			3423275	3423275	3423275	3423275	3423242	3423242	3423276	3423276	(2) 4040283	1001107336	3423275	
MODEL	SN BREAKS	LOAD CHART BOOKLET												
JLG	G9-43A	0160037671 - 0160040674, excl 0160040468 & 0160040672	1001106002					
		0160040675 - Present, incl 0160040468 & 0160040672	1001130663					
	G10-43A	Prior To 0160037671	1001130935					
		0160037671 - 0160040674, excl 0160040468 & 0160040672	1001113013					
		0160040675 - Present, incl 0160040468 & 0160040672	1001130935					
	G10-55A	Prior To 0160037689	1001105707											.
		0160037690 - 0160038486, incl 0160038505 & 0160038507, excl 0160038324, 0160038489 & 0160038493	1001106003					
		0160038500 - Present, incl 0160038324, 0160038489 & 0160038493; excl 0160038505 & 0160038507	1001115135					
	G12-55A	Prior To 0160037689	1001105326											.
		0160037689 - 0160038533	1001106004					
		0160038538 - Present	1001115536					
	TF6-42	ALL	Consult Factory										.	

* Used with optional Skid Steer Coupler.

** May require purchase of new load chart booklet on some models.

NOTES:

- Use only JLG approved attachments with proper material handler model/attachment load capacity charts displayed in the operator's cab.

- Never use your attachment as a work platform or personnel carrier.

Can't find the attachment you are looking for? Contact your JLG Aftermarket Parts representative at 1-877-JLG-LIFT or visit www.jlg.com.

ATTACHMENTS

Non-Current Production - Standard Carriages, Gradall Available Through JLG Aftermarket Parts

CARRIAGE SIZE			50 in.	50 in.	50 in.	60 in.	72 in.	72 in.
LIFTING LUG			No	No	No	No	No	No
APPROX. WEIGHT			479 lbs.	490 lbs.	471 lbs.	534 lbs.	586 lbs.	634 lbs.
PART NO.			1170019S	1170020S	1170021S	1170023	1170026S	1001132514S
FORK PIN NO.			3423275	3423275	3423275	3423242	3423276	3423276
MODEL	SN BREAKS	LOAD CHART BOOKLET						
GRADALL	G6-42P	Prior To 0160037689	1001105324	.				
		0160037689 - Present	1001106005		.			.
	522D/524D	ALL	Consult Factory		.		.	.
	534D-6	ALL	Consult Factory		.		.	.
	534D-9	Prior To 0160037689	1001102719		.		.	.
		0160037689 - Present	1001112753		.		.	.
	534D-10	Prior To 0160037689	1001102720		.		.	.
		0160037689 - Present	1001112753		.		.	.
	544D	Prior To 0160037689	1001102721		.		.	.
		0160037689 - Present	1001106008		.		.	.
	534C-9	ALL	Consult Factory		.		.	.
	534C-10	ALL	Consult Factory		.		.	.
	544C	ALL	Consult Factory		.		.	.

Non-Current Production - Standard Carriages, SkyTrak Legacy Available Through JLG Aftermarket Parts

CARRIAGE SIZE			50 in.	50 in.	60 in.	60 in.	72 in.	72 in.	48 in.	60 in.	72 in.	
LIFTING LUG			No	Yes	No	Yes	No	Yes	No	No	No	
APPROX. WEIGHT			471 lbs.	478 lbs.	497 lbs.	503 lbs.	634 lbs.	639 lbs.	509 lbs.	510 lbs.	509 lbs.	
PART NO.			1170021S	1001146084S**	1170024S	1001146086S**	1001132514S	1001146088S**	6040500S	6040600S	6040700S	
FORK PIN NO.			3423275	3423275	3423242	3423242	3423276	3423276	7128772	7128792	90551013	
MODEL	SN BREAKS	LOAD CHART BOOKLET										
SKYTRAK LEGACY	4266	ALL	Consult Factory						.	.	.	
	4270	ALL	Consult Factory						.	.	.	
	4290	ALL	Consult Factory						.	.	.	
	5028	ALL	Consult Factory						.	.	.	
	6036	Prior To 0160031200	Consult Factory							.	.	.
		0160031200 - 0160069719, exd 0160065792, 0160065798, 0160065824, 0160069383 & 0160069411	1001199500			
	6042	Prior To 0160031200	Consult Factory							.	.	.
		0160031200 - 0160069719, exd 0160065792, 0160065798, 0160065824, 0160069383 & 0160069411	1001199504			
	8042	Prior To 0160031235	Consult Factory							.	.	.
		0160031235 - 0160069721, exd 0160065791, 0160065796, 0160065825, 0160065826, 0160069336, 0160069359 & 0160069441	1001199508			

Continues on next page

* Used with optional Skid Steer Coupler.

** May require purchase of new load chart booklet on some models.

NOTES:

- Use only JLG approved attachments with proper material handler model/attachment load capacity charts displayed in the operator's cab.
 - Never use your attachment as a work platform or personnel carrier.
- Can't find the attachment you are looking for? Contact your JLG Aftermarket Parts representative at 1-877-JLG-LIFT or visit www.jlg.com.

Non-Current Production - Standard Carriages, SkyTrak Legacy
Available Through JLG Aftermarket Parts

Continued from previous page

CARRIAGE SIZE			50 in.	50 in.	60 in.	60 in.	72 in.	72 in.	48 in.	60 in.	72 in.	
LIFTING LUG			No	Yes	No	Yes	No	Yes	No	No	No	
APPROX. WEIGHT			471 lbs.	478 lbs.	497 lbs.	503 lbs.	634 lbs.	639 lbs.	509 lbs.	510 lbs.	509 lbs.	
PART NO.			1170021S	1001146084S**	1170024S	1001146086S**	1001132514S	1001146088S**	6040500S	6040600S	6040700S	
FORK PIN NO.			342327S	342327S	3423242	3423242	3423276	3423276	7128772	7128792	90551013	
MODEL	SN BREAKS	LOAD CHART BOOKLET										
SKYTRAK LEGACY	10042	Prior To 0160031425	Consult Factory							.	.	.
		0160031425 - 0160069721, excl 0160065791, 0160065796, 0160065825, 0160065826, 0160069336, 0160069359 & 0160069441	1001199512			
	10054	Prior To 0160031255	Consult Factory							.	.	.
		0160031255 - 0160069721, excl 0160065791, 0160065796, 0160065825, 0160065826, 0160069336, 0160069359 & 0160069441	1001199518			

Non-Current Production - Standard Carriages, Lull
Available Through JLG Aftermarket Parts

CARRIAGE SIZE			50 in.	50 in.	60 in.	60 in.	72 in.	72 in.	48 in.	50 in.	50 in.	60 in.	72 in.	74 in.
LIFTING LUG			No	Yes	No	Yes	No	Yes	No	No	No	No	No	No
APPROX. WEIGHT			471 lbs.	478 lbs.	497 lbs.	503 lbs.	634 lbs.	639 lbs.	509 lbs.	532 lbs.	500 lbs.	510 lbs.	509 lbs.	598 lbs.
PART NO.			1170021S	1001146084S**	1170024S	1001146086S**	1001132514S	1001146088S**	6040500S	7161200S	48040	6040600S	6040700S	48042
FORK PIN NO.			342327S	342327S	3423242	3423242	3423276	3423276	7128772	90451058	10223049	7128792	90551013	10124495
MODEL	SN BREAKS	LOAD CHART BOOKLET												
LULL	644E-42	Prior To 0160031500	7300628						
		0160031500 - Present	1001134329					
	944E-42	Prior To 0160031500	7301586						
		0160031500 - Present	1001106011					
	1044C-54 SII	Prior To 0160037893	1001105327								.			.
		0160037893 - Present	1001106009					
	644B-42	ALL	Consult Factory								.			.
	844C-42	ALL	Consult Factory								.			.
	6K-37	ALL	Consult Factory								.			.
	6K-42	ALL	Consult Factory								.			.
	8K-42	ALL	Consult Factory								.			.
	10K-42/10K-54	ALL	Consult Factory								.			.
	644D-34	ALL	Consult Factory								.			.

* Used with optional Skid Steer Coupler.

** May require purchase of new load chart booklet on some models.

NOTES:

- Use only JLG approved attachments with proper material handler model/attachment load capacity charts displayed in the operator's cab.
- Never use your attachment as a work platform or personnel carrier.

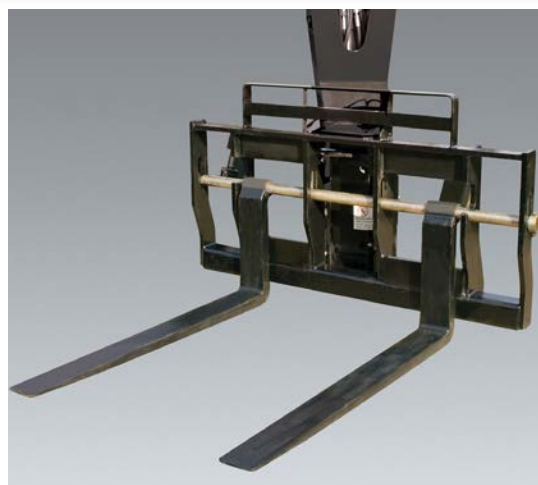
Can't find the attachment you are looking for? Contact your JLG Aftermarket Parts representative at 1-877-JLG-LIFT or visit www.jlg.com.

Swing Carriage

The swing carriage permits the operator to maneuver loads through openings and tight spaces like windows or scaffolding by swinging the carriage to the right or left.

Features

- Right and left 90° swing option
- Right and left 180° swing option
- Standard up-and-down tilt on horizontal plane



Current Production - Swing Carriages

Available Through JLG Aftermarket Or With New Machine Orders

CARRIAGE SIZE		72 in.	72 in.		
APPROX. WEIGHT		1154 lbs.	1868 lbs.		
CARRIAGE SWING		90°	180°		
PART NO.		1001095418S	1001104992		
FORK PIN NO.		3423276	70020027		
MODEL	SN BREAKS	LOAD CHART BOOKLET			
JLG	642, 943, 1043, 1055, 1255 ONLY	Software, Chart Library			
	642	Without Outriggers	1001212421	•	
		With Outriggers	1001203057	•	
	943/1043	Without Outriggers	1001212420	•	
		With Outriggers	1001212419	•	
	1055	Prior To 0160074169	1001212227	•	
		0160074169 - Present	1001211156	•	
	1255	Prior To 0160074168	1001212225	•	
		0160074168 - Present	1001211153	•	
	G15-44A	Prior To 0160074142	1001194130	•	
		0160074142 - Present	1001211953	•	
	SKYTRAK 14F	6036	0160069720 - 0160075649, incl 0160065792, 0160065798, 0160065824, 0160069383, 0160069411, 0160075653 & 0160075722	1001199500	•
			0160075650 - Present, excl 0160075653 & 0160075722	1001211867	•
		6042	0160069720 - 0160075656, incl 0160065792, 0160065798, 0160065824, 0160069383 & 0160069411	1001199504	•
0160075657 - Present			1001211869	•	
8042		0160069722 - 0160075670, incl 0160065791, 0160065796, 0160065825, 0160065826, 0160069336, 0160069359 & 0160069441	1001199508	•	
		0160075671 - Present	1001211871	•	
10042		0160069722 - 0160075987, incl 0160065791, 0160065796, 0160065825, 0160065826, 0160069336, 0160069359 & 0160069441	1001199512	•	
		0160075988 - Present	1001211873	•	
10054		0160069722 - 0160075682, incl 0160065791, 0160065796, 0160065825, 0160065826, 0160069336, 0160069359, 0160069441 & 0160075696	1001199518	•	
		0160075683 - Present, excl 0160075696	1001211875	•	

For SkyTrak Legacy machines, please refer to Non-Current Production SkyTrak table.

NOTES:

- Use only JLG approved attachments with proper material handler model/attachment load capacity charts displayed in the operator's cab.
 - Never use your attachment as a work platform or personnel carrier.
- Can't find the attachment you are looking for? Contact your JLG Aftermarket Parts representative at 1-877-JLG-LIFT or visit www.jlg.com.

Non-Current Production - Swing Carriages, JLG and Gradall
Available Through JLG Aftermarket Parts

CARRIAGE SIZE			72 in.	72 in.	72 in.	72 in.	72 in.	72 in.
APPROX. WEIGHT			1154 lbs.	1230 lbs.	1252 lbs.	1810 lbs.	2112 lbs.	1868 lbs.
CARRIAGE SWING			90°	100°	100°	180°	180°	180°
PART NO.			1001095418S	90455044	91405075	91553076	91563146	1001104992
FORK PIN NO.			3423276	90551013	91401324	91144205	70020027	70020027
MODEL	SN BREAKS	LOAD CHART BOOKLET						
JLG	G6-42A	Prior To 0160037722	1001105323			.		
		0160037722 - 0160040659	1001106001	.				
		0160040678 - Present	1001130793	.				
	G9-43A	Prior To 0160037671	1001105325			.		
		0160037671 - 0160040674, excl 0160040468 & 0160040672	1001106002	.				
		0160040675 - Present, incl 0160040468 & 0160040672	1001130663	.				
	G10-43A	0160037671 - 0160040674, excl 0160040468 & 0160040672	100113013	.				
		0160040675 - Present, incl 0160040468 & 0160040672	1001130935	.				
	G10-55A	Prior To 0160037689	1001105707			.		.
		0160037690 - 0160038486, incl 0160038505 & 0160038507, excl 0160038324, 0160038489 & 0160038493	1001106003	.				
		0160038500 - Present, incl 0160038324, 0160038489 & 0160038493; excl 0160038505 & 0160038507	1001115135	.				
		0160037690 - Present, incl 0160038505, 0160038507, 0160038324, 0160038489 & 0160038493	1001115138					.
	G12-55A	Prior To 0160037689	1001105326			.		.
		0160037689 - 0160038533	1001106004	.				
		0160038538 - Present	1001115536	.				
TF6-42	ALL	Consult Factory			.			
GRADALL	G6-42P	Prior To 0160037689	1001105324			.		
		0160037689 - Present	1001106005	.				
	522D/524D	ALL	Consult Factory		.			
	534D-6	ALL	Consult Factory		.			
	534D-9	Prior To 0160037689	1001102719		.			
		0160037689 - Present	1001112753	.				
	534D-10	Prior To 0160037689	1001102720		.		.	
		0160037689 - Present	1001112753	.				
		0160037689 - Present	100110407				.	
	544D	Prior To 0160037689	1001102721		.		.	
		0160037689 - Present	1001106008	.				
		0160037689 - Present	100110408				.	
	534C-9	ALL	Consult Factory		.			
	534C-10	ALL	Consult Factory		.			
	544C	ALL	Consult Factory		.			

NOTES:

- Use only JLG approved attachments with proper material handler model/attachment load capacity charts displayed in the operator's cab.
 - Never use your attachment as a work platform or personnel carrier.
- Can't find the attachment you are looking for? Contact your JLG Aftermarket Parts representative at 1-877-JLG-LIFT or visit www.jlg.com.

ATTACHMENTS

Non-Current Production - Swing Carriages, SkyTrak Legacy and SkyTrak

Available Through JLG Aftermarket Parts

CARRIAGE SIZE			52 in.	72 in.	72 in.
APPROX. WEIGHT			959 lbs.	914 lbs.	1154 lbs.
CARRIAGE SWING			90°	90°	90°
PART NO.			7125900	7125800S	1001095418S
FORK PIN NO.			7128782	90551013	3423276
MODEL	SN BREAKS	LOAD CHART BOOKLET			
SKYTRAK LEGACY	6036	0160031200 - 0160069719, excl 0160065792, 0160065798, 0160065824, 0160069383 & 0160069411	1001199500		•
	6042	0160031200 - 0160069719, excl 0160065792, 0160065798, 0160065824, 0160069383 & 0160069411	1001199504		•
	8042	0160031235 - 0160069721, excl 0160065791, 0160065796, 0160065825, 0160065826, 0160069336, 0160069359 & 0160069441	1001199508		•
	10042	0160031425 - 0160069721, excl 0160065791, 0160065796, 0160065825, 0160065826, 0160069336, 0160069359 & 0160069441	1001199512		•
	10054	0160031255 - 0160069721, excl 0160065791, 0160065796, 0160065825, 0160065826, 0160069336, 0160069359 & 0160069441	1001199518		•
SKYTRAK	6036	Prior To 0160031200	Consult Factory	•	•
	6042	Prior To 0160031200	Consult Factory	•	•
	8042	Prior To 0160031235	Consult Factory	•	•
	10042	Prior To 0160031425	Consult Factory	•	•
	10054	Prior To 0160031255	Consult Factory	•	•
	4266	ALL	Consult Factory	•	•
	4270	ALL	Consult Factory	•	•
	4290	ALL	Consult Factory	•	•
5028	ALL	Consult Factory	•	•	

Non-Current Production - Swing Carriages, Lull

Available Through JLG Aftermarket Parts

CARRIAGE SIZE			52 in.	72 in.	72 in.	72 in.
APPROX. WEIGHT			959 lbs.	914 lbs.	1154 lbs.	1440 lbs.
CARRIAGE SWING			90°	90°	90°	90°
PART NO.			7125900	7125800S	1001095418S	1100532
FORK PIN NO.			7128782	90551013	3423276	7029710
MODEL	SN BREAKS	LOAD CHART BOOKLET				
LULL	644E-42	0160037900 - Present	1001106009		•	
	644E-42	Prior To 0160031500	7300628	•	•	
	944E-42	0160037794 - Present, incl 0160045421	1001134329		•	
	944E-42	Prior To 0160031500	7301586	•	•	
	1044C-54 SII	0160037794 - Present	1001106011		•	
	1044C-54 SII	Prior To 0160037893	1001105327			•

NOTES:

- Use only JLG approved attachments with proper material handler model/attachment load capacity charts displayed in the operator's cab.
 - Never use your attachment as a work platform or personnel carrier.
- Can't find the attachment you are looking for? Contact your JLG Aftermarket Parts representative at 1-877-JLG-LIFT or visit www.jlg.com.

Tower Carriages

The tower increases mobility and efficiency on the job site. It allows the operator to move materials to a higher row of scaffolding by extending the vertical reach without any additional boom extension.

Features

- Tower requires auxiliary hydraulics
- Available with side-tilt carriage
 - JLG and Gradall models equipped with tower with side-tilt carriage requires auxiliary electrics
 - Lull 1044C-54 and 1044C-54 SII models equipped with tower with side-tilt carriage requires second auxiliary circuit
- Available with side-shift 100° swing carriage



Current Production - Tower Carriages

Available Through JLG Aftermarket Or With New Machine Orders

TOWER HEIGHT			8 ft.	8 ft.
CARRIAGE TYPE			Standard	Side-Tilt
CARRIAGE WIDTH			50 in.	50 in.
INCLUDED FORK LENGTH			None	None
LIFTING CAPACITY			4500 lbs.	4500 lbs.
PART NO.			1001108668	1001108669
FORK PIN NO.			70022990	70022990
MODEL	SN BREAKS	LOAD CHART BOOKLET		
JLG	642, 943, 1043, 1055, 1255 ONLY	Software, Chart Library	1001187087 (Ref No.)	
	642	Without Outriggers	1001212421	•
		With Outriggers	1001203057	•
	943/1043	Without Outriggers	1001212420	•
		With Outriggers	1001212419	•
	1055	Prior To 0160074169	1001212227	•
		0160074169 - Present	1001211156	•
	1255	Prior To 0160074168	1001212225	•
0160074168 - Present		1001211153	•	
SKYTRAK T4F	6036	0160069720 - 0160075649, incl 0160065792, 0160065798, 0160065824, 0160069383, 0160069411, 0160075653 & 0160075722	1001199500	•
		0160075650 - Present, excl 0160075653 & 0160075722	1001211867	•
	6042	0160069720 - 0160075656, incl 0160065792, 0160065798, 0160065824, 0160069383 & 0160069411	1001199504	•
		0160075657 - Present	1001211869	•
	8042	0160069722 - 0160075670, incl 0160065791, 0160065796, 0160065825, 0160065826, 0160069336, 0160069359 & 0160069441	1001199508	•
		0160075671 - Present	1001211871	•
	10042	0160069722 - 0160075987, incl 0160065791, 0160065796, 0160065825, 0160065826, 0160069336, 0160069359 & 0160069441	1001199512	•
		0160075988 - Present	1001211873	•
	10054	0160069722 - 0160075682, incl 0160065791, 0160065796, 0160065825, 0160065826, 0160069336, 0160069359, 0160069441 & 0160075696	1001199518	•
		0160075683 - Present, excl 0160075696	1001211875	•

For SkyTrak Legacy machines, please refer to Non-Current Production SkyTrak table.

NOTES:

- Use only JLG approved attachments with proper material handler model/attachment load capacity charts displayed in the operator's cab.
 - Never use your attachment as a work platform or personnel carrier.
- Can't find the attachment you are looking for? Contact your JLG Aftermarket Parts representative at 1-877-JLG-LIFT or visit www.jlg.com.

ATTACHMENTS

Non-Current Production - Tower Carriages, JLG Available Through JLG Aftermarket Parts

TOWER HEIGHT			6 ft.	6 ft.	6 ft.	6 ft.	8 ft.	8 ft.
CARRIAGE TYPE			Standard	Standard	Swing w/ S.S.	Swing w/ S.S.	Standard	Side-Tilt
CARRIAGE WIDTH			48 in.	72 in.	72 in.	72 in.	50 in.	50 in.
INCLUDED FORK LENGTH			None	None	48 in.	60 in.	None	None
LIFTING CAPACITY			4500 lbs.	4500 lbs.	2600 lbs.	2878 lbs.	4500 lbs.	4500 lbs.
PART NO.			91405060	91405061	91405070	91415026	1001108668	1001108669
FORK PIN NO.			70020387	70020388	N/A	N/A	70022990	70022990
MODEL	SN BREAKS	LOAD CHART BOOKLET						
JLG	G6-42A	Prior To 0160037722	1001105323	.	.	.		
		0160037722 - 0160040659	1001110401				.	.
		0160040678 - Present	1001130793				.	.
	G9-43A	Prior To 0160037671	1001105325	
		0160037671 - 0160040674, excl 0160040468 & 0160040672	1001110402					.
		0160040675 - Present, incl 0160040468 & 0160040672	1001130708					.
	G10-43A	0160037671 - 0160040674, excl 0160040468 & 0160040672	1001115257					.
		0160040675 - Present, incl 0160040468 & 0160040672	1001130844					.
	G10-55A	Prior To 0160037689	1001105707	
		0160037690 - Present, incl 0160038505, 0160038507, 0160038324, 0160038489 & 0160038493	1001115138					.
	G12-55A	Prior To 0160037689	1001105326	
		0160037689 - Present	1001115540					.
TF6-42	ALL	Consult Factory	.	.	.			

Non-Current Production - Tower Carriages, Gradall Available Through JLG Aftermarket Parts

TOWER HEIGHT			6 ft.	6 ft.	6 ft.	6 ft.	6 ft.	6 ft.	8 ft.	8 ft.	
CARRIAGE TYPE			Standard	Standard	Standard	Swing w/ S.S.	Swing w/ S.S.	Standard	Swing w/ S.S.	Standard	Side-Tilt
CARRIAGE WIDTH			48 in.	48 in.	66 in.	66 in.	66 in.	72 in.	72 in.	50 in.	50 in.
INCLUDED FORK LENGTH			None	None	None	48 in.	60 in.	None	48 in.	None	None
LIFTING CAPACITY			4000 lbs.	4500 lbs.	4000 lbs.	2620 lbs.	2880 lbs.	4500 lbs.	2600 lbs.	4500 lbs.	4500 lbs.
PART NO.			90455035	91405060	90455037	90455047*	90455054*	91405061	91405070	1001108668	1001108669
FORK PIN NO.			91034410	70020387	91034432	N/A	N/A	70020388	N/A	70022990	70022990
MODEL	SN BREAKS	LOAD CHART BOOKLET									
GRADALL	G6-42P	Prior To 0160037689	1001105324		.			.	.		
		0160037689 - Present	1001106005							.	
	522D/524D	ALL	Consult Factory	.	.	.					
	534D-6	ALL	Consult Factory	.	.	.					
		Prior To 0160037689	1001102719				
	534D-9	Prior To 0160037689	1001102720				
		0160037689 - Present	1001110406							.	
	534D-10	Prior To 0160037689	1001102721				
		0160037689 - Present	1001110407							.	

*Forks included with PNs 90455047 and 90455054.

Continues on next page

NOTES:

- Use only JLG approved attachments with proper material handler model/attachment load capacity charts displayed in the operator's cab.
- Never use your attachment as a work platform or personnel carrier.
- Can't find the attachment you are looking for? Contact your JLG Aftermarket Parts representative at 1-877-JLG-LIFT or visit www.jlg.com.

Non-Current Production - Tower Carriages, Gradall
Available Through JLG Aftermarket Parts

Continued from previous page

TOWER HEIGHT			6 ft.	6 ft.	6 ft.	6 ft.	6 ft.	6 ft.	8 ft.	8 ft.	
CARRIAGE TYPE			Standard	Standard	Standard	Swing w/ S.S.	Swing w/ S.S.	Standard	Swing w/ S.S.	Standard	Side-Tilt
CARRIAGE WIDTH			48 in.	48 in.	66 in.	66 in.	66 in.	72 in.	72 in.	50 in.	50 in.
INCLUDED FORK LENGTH			None	None	None	48 in.	60 in.	None	48 in.	None	None
LIFTING CAPACITY			4000 lbs.	4500 lbs.	4000 lbs.	2620 lbs.	2880 lbs.	4500 lbs.	2600 lbs.	4500 lbs.	4500 lbs.
PART NO.			90455035	91405060	90455037	90455047*	90455054*	91405061	91405070	1001108668	1001108669
FORK PIN NO.			91034410	70020387	91034432	N/A	N/A	70020388	N/A	70022990	70022990
MODEL	SN BREAKS	LOAD CHART BOOKLET									
GRADALL	544D	Prior To 0160037689	1001102721							.	.
		0160037689 - Present	1001106008							.	.
	534C-9	ALL	Consult Factory	.	.	.					
	534C-10	ALL	Consult Factory	.	.	.					
	544C	ALL	Consult Factory	.	.	.					

*Forks included with PNs 90455047 and 90455054.

Non-Current Production - Tower Carriages, SkyTrak Legacy
Available Through JLG Aftermarket Parts

TOWER HEIGHT			8 ft.
CARRIAGE TYPE			Standard
CARRIAGE WIDTH			50 in.
INCLUDED FORK LENGTH			None
LIFTING CAPACITY			4500 lbs.
PART NO.			1001108668
FORK PIN NO.			70022990
MODEL	SN BREAKS	LOAD CHART BOOKLET	
SKYTRAK LEGACY	6036	0160031200 - 0160069719, excl 0160065792, 0160065798, 0160065824, 0160069383 & 0160069411	1001199500
	6042	0160031200 - 0160069719, excl 0160065792, 0160065798, 0160065824, 0160069383 & 0160069411	1001199504
	8042	0160031235 - 0160069721, excl 0160065791, 0160065796, 0160065825, 0160065826, 0160069336, 0160069359 & 0160069441	1001199508
	10042	0160031425 - 0160069721, excl 0160065791, 0160065796, 0160065825, 0160065826, 0160069336, 01600669359 & 0160069441	1001199512
		0160037798 - Present	1001199512
	10054	0160031255 - 0160069721, excl 0160065791, 0160065796, 0160065825, 0160065826, 0160069336, 0160069359 & 0160069441	1001199518
0160037793 - Present		1001199518	

Non-Current Production - Tower Carriages, Lull
Available Through JLG Aftermarket Parts

TOWER HEIGHT			8 ft.	8 ft.	8 ft.	8 ft.
CARRIAGE TYPE			Standard	Standard	Side-Tilt	Side-Tilt
CARRIAGE WIDTH			50 in.	50 in.	50 in.	50 in.
INCLUDED FORK LENGTH			None	None	None	None
LIFTING CAPACITY			2629 lbs.	4500 lbs.	2629 lbs.	4500 lbs.
PART NO.			48056	1001108668	48057	1001108670
FORK PIN NO.			10138064	70022990	10138064	70022990
MODEL	SN BREAKS	LOAD CHART BOOKLET				
LULL	644E-42	0160037900 - Present	1001106009	.		
	944E-42	0160037794 - Present, incl 0160045421	1001134329	.		
	1044C-54 SII	Prior To 0160037893	1001105327	.	.	
	1044C-54 SII	0160037900 - Present	1001110409	.	.	.

NOTES:

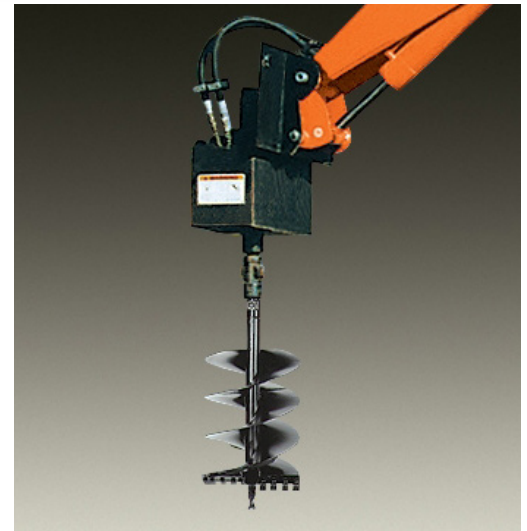
- Use only JLG approved attachments with proper material handler model/attachment load capacity charts displayed in the operator's cab.
 - Never use your attachment as a work platform or personnel carrier.
- Can't find the attachment you are looking for? Contact your JLG Aftermarket Parts representative at 1-877-JLG-LIFT or visit www.jlg.com.

Auger

An auger expands the functionality of your telehandler. Not only can the machine go up in the air but also down into the ground. With various auger bit sizes available, the operator can be precise in choosing one to best fit the task at hand.

Features

- Auger Drive Motor Part No. 1001092816 & Adapter Part No. 6043600
Required for SkyTrak and Lull E-Series applications
- Auger Drive Motor Part No. 51012 Required for Lull G-Series applications



Non-Current Production - Auger Extensions

Available Through JLG Aftermarket Parts

LENGTH			14 in.	24 in.
PART NO.			8866422	8866423
	MODEL	SN BREAKS	LOAD CHART BOOKLET	
SKYTRAK	6036	Prior To 0160031200	Consult Factory	•
	6042	Prior To 0160031200	Consult Factory	•
	8042	Prior To 0160031235	Consult Factory	•
	10042	Prior To 0160031425	Consult Factory	•
	10054	Prior To 0160031255	Consult Factory	•
LULL	644E-42	Prior To 0160031500	7300628	•
	944E-42	Prior To 0160031500	7301586	•

Non-Current Production - Auger Bits

Available Through JLG Aftermarket Parts

DIAMETER			6 in.	9 in.	12 in.	15 in.	18 in.	20 in.	24 in.	8 in.	12 in.	16 in.	18 in.
DEPTH			50 in.	50 in.	50 in.	50 in.	50 in.	50 in.	50 in.	60 in.	60 in.	60 in.	60 in.
PART NO.			8866415	8866416	8866417	8866418	8866419	8866558	8866420	10166297	10166298	10166994	10166299
	MODEL	SN BREAKS	LOAD CHART BOOKLET										
SKYTRAK	6036	Prior To 0160031200	Consult Factory	•	•	•	•	•	•	•			
	6042	Prior To 0160031200	Consult Factory	•	•	•	•	•	•	•			
	8042	Prior To 0160031235	Consult Factory	•	•	•	•	•	•	•			
	10042	Prior To 0160031425	Consult Factory	•	•	•	•	•	•	•			
	10054	Prior To 0160031255	Consult Factory	•	•	•	•	•	•	•			
LULL	644E-42	Prior To 0160031500	7300628	•	•	•	•	•	•	•			
	944E-42	Prior To 0160031500	7301586	•	•	•	•	•	•	•			
	1044C-54 SII	Prior To 0160037893	1001105327							•	•	•	•

NOTES:

- Use only JLG approved attachments with proper material handler model/attachment load capacity charts displayed in the operator's cab.
 - Never use your attachment as a work platform or personnel carrier.
- Can't find the attachment you are looking for? Contact your JLG Aftermarket Parts representative at 1-877-JLG-LIFT or visit www.jlg.com.

Bale Clamp

The bale clamp attachment is used in the agriculture industry, making it easy to maneuver hay or straw bales. The bale clamps can grab bales that are approximately 79 inches in diameter.

Features

- Spike-style bale clamp available (shown) and tube-style bale clamp available

Non-Current Production - Bale Clamp

Available Through JLG Aftermarket Parts

STYLE			Tube	Spike	
PART NO.			0240117	0240118	
	MODEL	SN BREAKS	LOAD CHART BOOKLET		
JLG	619A	ALL	Consult Factory	•	•
	723A	ALL	Consult Factory	•	•



4-in-1 Bucket

This bucket saves you time and money. The 4-in-1 bucket can be used for loading, leveling, bottom dumping or as a grapple bucket. 4-in-1 buckets are not designed for digging.

Non-Current Production - 4-in-1 Bucket

Available Through JLG Aftermarket Parts

BUCKET SIZE			81 in.	96 in.	
CAPACITY			.78 cu. yd.	1.3 cu. yd.	
APPROX. WEIGHT			1503 lbs.	1806 lbs.	
PART NO.			0930006	0930003	
	MODEL	SN BREAKS	LOAD CHART BOOKLET		
JLG	G5-19A	ALL	Consult Factory	•	•
	G6-23A	ALL	Consult Factory	•	•
	619A	ALL	Consult Factory	•	•
	723A	ALL	Consult Factory	•	•



NOTES:

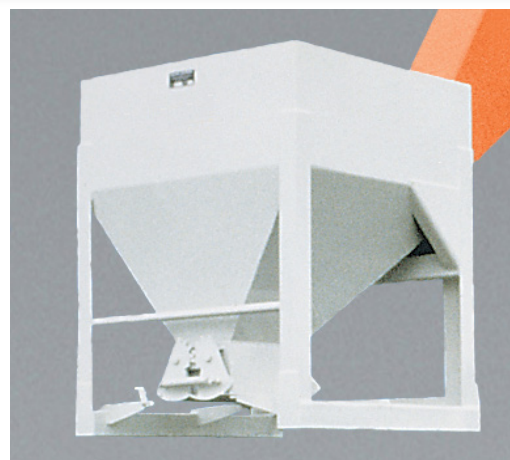
- Use only JLG approved attachments with proper material handler model/attachment load capacity charts displayed in the operator's cab.
 - Never use your attachment as a work platform or personnel carrier.
- Can't find the attachment you are looking for? Contact your JLG Aftermarket Parts representative at 1-877-JLG-LIFT or visit www.jlg.com.

Concrete Bucket

The concrete bucket can increase your job site efficiency by reducing the amount of time and personnel that are required to get concrete materials to elevated sites.

Features

- Approx. 36 in. x 36 in. top opening
- Manual and auxiliary hydraulic options available
- Discharge hose options



Non-Current Production - Concrete Buckets

Available Through JLG Aftermarket Parts

CAPACITY			.5 cu. yd.	1 cu. yd.	.5 cu. yd.	1 cu. yd.
CONTROLS			Manual	Manual	Hydraulic	Hydraulic
TYPE			Quick Switch Mount	Quick Switch Mount	Quick Switch Mount	Quick Switch Mount
PART NO.			8866444	8866443	8866442	8866441
MODEL	SN BREAKS	LOAD CHART BOOKLET				
SKYTRAK	6036	Prior To 0160031200	Consult Factory	•	•	
	6042	Prior To 0160031200	Consult Factory	•	•	
	8042	Prior To 0160031235	Consult Factory	•	•	
	10042	Prior To 0160031425	Consult Factory	•	•	•
	10054	Prior To 0160031255	Consult Factory	•	•	•
LULL	644E-42	Prior To 0160031500	7300628	•	•	
	944E-42	Prior To 0160031500	7301586	•	•	

Non-Current Production - Concrete Bucket Discharge Hoses

Available Through JLG Aftermarket Parts

HOSE LENGTH			4 in.	6 in.	8 in.	Rubber Side Discharge
PART NO.			8866446	8866464	8866560	8866445
MODEL	SN BREAKS	LOAD CHART BOOKLET				
SKYTRAK	6036	Prior To 0160031200	Consult Factory	•	•	•
	6042	Prior To 0160031200	Consult Factory	•	•	•
	8042	Prior To 0160031235	Consult Factory	•	•	•
	10042	Prior To 0160031425	Consult Factory	•	•	•
	10054	Prior To 0160031255	Consult Factory	•	•	•
LULL	644E-42	Prior To 0160031500	7300628	•	•	•
	944E-42	Prior To 0160031500	7301586	•	•	•

NOTES:

- Use only JLG approved attachments with proper material handler model/attachment load capacity charts displayed in the operator's cab.
 - Never use your attachment as a work platform or personnel carrier.
- Can't find the attachment you are looking for? Contact your JLG Aftermarket Parts representative at 1-877-JLG-LIFT or visit www.jlg.com.

Fork Mounted Bucket

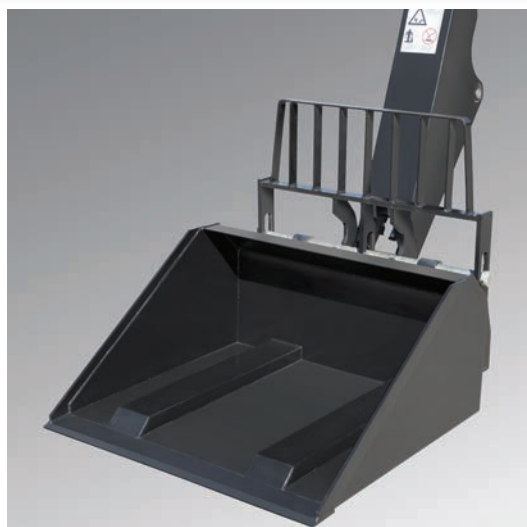
The fork mounted bucket provides the versatility of a bucket with the convenience of not needing to remove forks and carriages.

Features

- Cost effective alternative to a coupler mounted bucket
- For use with approved JLG telehandlers

Specifications

- Maximum capacity: 2000 lbs
- Maximum weight: 705 lbs
- 60" bucket
- Bucket width: 1 cu. yd.
- 48" forks
- Distance to center of gravity: 22.5 in.



Current Production - Fork Mounted Bucket

Available Through JLG Aftermarket Or With New Machine Orders

BUCKET WIDTH		60"	
CAPACITY		2000 lbs.	
APPROX. WEIGHT		705 lbs.	
PART NO.		1001195970	
	MODEL	SN BREAKS	
JLG	642	Without Outriggers	•
	642	With Outriggers	•
	943/1043	Without Outriggers	•
	943/1043	With Outriggers	•
	1055	Prior To 0160074169	•
	1055	0160074169 - Present	•
	1255	Prior To 0160074168	•
	1255	0160074168 - Present	•
SKYTRAK T4F	6036	0160069720 - 0160075649, incl 0160065792, 0160065798, 0160065824, 0160069383, 0160069411, 0160075653 & 0160075722	•
		0160075650 - Present, excl 0160075653 & 0160075722	•
	6042	0160069720 - 0160075656, incl 0160065792, 0160065798, 0160065824, 0160069383 & 0160069411	•
		0160075657 - Present	•
	8042	0160069722 - 0160075670, incl 0160065791, 0160065796, 0160065825, 0160065826, 0160069336, 0160069359 & 0160069441	•
		0160075671 - Present	•
	10042	0160069722 - 0160075987, incl 0160065791, 0160065796, 0160065825, 0160065826, 0160069336, 0160069359 & 0160069441	•
		0160075988 - Present	•
	10054	0160069722 - 0160075682, incl 0160065791, 0160065796, 0160065825, 0160065826, 0160069336, 0160069359, 0160069441 & 0160075696	•
		0160075683 - Present, excl 0160075696	•

Use Appropriate Carriage Attachment Load Chart

NOTES:

- Use only JLG approved attachments with proper material handler model/attachment load capacity charts displayed in the operator's cab.
 - Never use your attachment as a work platform or personnel carrier.
- Can't find the attachment you are looking for? Contact your JLG Aftermarket Parts representative at 1-877-JLG-LIFT or visit www.jlg.com.

ATTACHMENTS

Non-Current Production - Fork Mounted Bucket
Available Through JLG Aftermarket Parts

BUCKET WIDTH		60"	
CAPACITY		2000 lbs.	
APPROX. WEIGHT		705 lbs.	
PART NO.		1001195970	
MODEL	SN BREAKS		
JLG	G6-42A	0160037722 - 0160040659	•
		0160040678 - Present	•
	G9-43A	0160037671 - 0160040674, excl 0160040468 & 0160040672	•
		0160040675 - Present, incl 0160040468 & 0160040672	•
	G10-43A	0160037671 - 0160040674, excl 0160040468 & 0160040672	•
		0160040675 - Present, incl 0160040468 & 0160040672	•
	G10-55A	0160037690 - Present, incl 0160038505, 0160038507, 0160038324, 0160038489 & 0160038493	•
	G12-55A	0160037689 - Present	•

Use Appropriate Carriage Attachment Load Chart

NOTES:

- Use only JLG approved attachments with proper material handler model/attachment load capacity charts displayed in the operator's cab.
 - Never use your attachment as a work platform or personnel carrier.
- Can't find the attachment you are looking for? Contact your JLG Aftermarket Parts representative at 1-877-JLG-LIFT or visit www.jlg.com.

Grapple Bucket

The grapple bucket uses hydraulic arms to secure bulky loads and materials. This feature is useful when cleaning up natural disaster sites and day-to-day job site scraps. Grapple buckets are not designed for digging.

Features

- Independent grapple arms require auxiliary hydraulics (except 619A, 723A, G5-19A and G6-23A)



Current Production - Grapple Bucket

Available Through JLG Aftermarket Or With New Machine Orders

BUCKET SIZE		96 in.		
CAPACITY		1.75 cu. yd.		
APPROX. WEIGHT		1514 lbs.		
PART NO.		0930020		
MODEL	SN BREAKS	LOAD CHART BOOKLET		
JLG	642, 943, 1043, 1055, 1255 ONLY	Software, Chart Library	1001187087 (Ref No.)	
	642	Without Outriggers	1001212421	
		With Outriggers	1001203057	
	943/1043	Without Outriggers	1001212420	
		With Outriggers	1001212419	
	1055	Prior To 0160074169	1001212227	
		0160074169 - Present	1001211156	
	1255	Prior To 0160074168	1001212225	
		0160074168 - Present	1001211153	
	G15-44A	Prior To 0160074142	1001194130	
		0160074142 - Present	1001211953	
	SKYTRAK T4F	6036	0160069720 - 0160075649, incl 0160065792, 0160065798, 0160065824, 0160069383, 0160069411, 0160075653 & 0160075722	1001199500
			0160075650 - Present, excl 0160075653 & 0160075722	1001211867
		6042	0160069720 - 0160075656, incl 0160065792, 0160065798, 0160065824, 0160069383 & 0160069411	1001199504
0160075657 - Present			1001211869	
8042		0160069722 - 0160075670, incl 0160065791, 0160065796, 0160065825, 0160065826, 0160069336, 0160069359 & 0160069441	1001199508	
		0160075671 - Present	1001211871	
10042		0160069722 - 0160075987, incl 0160065791, 0160065796, 0160065825, 0160065826, 0160069336, 0160069359 & 0160069441	1001199512	
		0160075988 - Present	1001211873	
10054		0160069722 - 0160075682, incl 0160065791, 0160065796, 0160065825, 0160065826, 0160069336, 0160069359, 0160069441 & 0160075696	1001199518	
		0160075683 - Present, excl 0160075696	1001211875	

For SkyTrak Legacy machines, please refer to Non-Current Production SkyTrak table.

NOTES:

- Use only JLG approved attachments with proper material handler model/attachment load capacity charts displayed in the operator's cab.
 - Never use your attachment as a work platform or personnel carrier.
- Can't find the attachment you are looking for? Contact your JLG Aftermarket Parts representative at 1-877-JLG-LIFT or visit www.jlg.com.

ATTACHMENTS

Non-Current Production - Grapple Buckets
Available Through JLG Aftermarket Parts

BUCKET SIZE				83 in.	96 in.	96 in.	96 in.	72 in.	96 in.
CAPACITY				1.96 cu. yd.	1.75 cu. yd.	2.35 cu. yd.	1.75 cu. yd.	1 cu. yd.	1.75 cu. yd.
APPROX. WEIGHT				1403 lbs.	1740 lbs.	1554 lbs.	1514 lbs.	1096 lbs.	1514 lbs.
PART NO.				0930005	09300215*	0930004	0930020	1001099831	0930020
MODEL	SN BREAKS	LOAD CHART BOOKLET							
JLG	619A	ALL	Consult Factory	•		•			
	723A	ALL	Consult Factory			•			
	G5-18A	Quick coupler (hydraulic or manual)	1001102000					•	
	G5-19A	ALL	Consult Factory	•		•			
	G6-23A	ALL	Consult Factory			•			
	G6-42A	Prior To 0160037722	1001105323		•				
		0160037722 - 0160040659	1001104401						•
		0160040678 - Present	1001130739						•
	G9-43A	Prior To 0160037671	1001105325		•				
		0160037671 - 0160040674, excl 0160040468 & 0160040672	1001104402						•
		0160040675 - Present, incl 0160040468 & 0160040672	1001130708						•
	G10-43A	0160037671 - 0160040674, excl 0160040468 & 0160040672	1001115257						•
		0160040675 - Present, incl 0160040468 & 0160040672	1001130844						•
	G10-55A	Prior To 0160037689	1001105707		•				
0160037690 - Present, incl 0160038505, 0160038507, 0160038324, 0160038489 & 0160038493		10011151358						•	
G12-55A	Prior To 0160037689	1001105326		•					
	0160037689 - Present	1001115540						•	
GRADALL	G6-42P	0160037689 - Present	1001104405				•		
	534D-9	0160037689 - Present	1001110406				•		
	534D-10	0160037689 - Present	1001110407				•		
	544D	0160037689 - Present	1001110408				•		
SKYTRAK LEGACY	6036	0160031200 - 0160069719, excl 0160065792, 0160065798, 0160065824, 0160069383 & 0160069411	1001199500					•	
	6042	0160031200 - 0160069719, excl 0160065792, 0160065798, 0160065824, 0160069383 & 0160069411	1001199504					•	
	8042	0160031235 - 0160069721, excl 0160065791, 0160065796, 0160065825, 0160065826, 0160069336, 0160069359 & 0160069441	1001199508					•	
	10042	0160031425 - 0160069721, excl 0160065791, 0160065796, 0160065825, 0160065826, 0160069336, 0160069359 & 0160069441	1001199512					•	
	10054	0160031255 - 0160069721, excl 0160065791, 0160065796, 0160065825, 0160065826, 0160069336, 0160069359 & 0160069441	1001199518					•	
LULL	644E-42	0160037900 - Present	1001104410					•	
	944E-42	0160037794 - Present, incl 0160045421	1001104411					•	
	1044C-54 SII	0160037794 - Present	1001104409					•	

* Includes Load Chart

NOTES:

- Use only JLG approved attachments with proper material handler model/attachment load capacity charts displayed in the operator's cab.
 - Never use your attachment as a work platform or personnel carrier.
- Can't find the attachment you are looking for? Contact your JLG Aftermarket Parts representative at 1-877-JLG-LIFT or visit www.jlg.com.

Material Bucket

Use the material bucket to scoop and carry loose material and debris like gravel or dirt. The material bucket can also be used for clean up around the job site. Material buckets are not designed for digging.

Features

- Available in different widths and capacities for various jobsite requirements
- Bucket teeth kits available for 0930008, 0930009, 0930015 and 0930016 material buckets (purchase part number 1001094612)



Current Production - Material Bucket

Available Through JLG Aftermarket Or With New Machine Orders

BUCKET WIDTH			72 in.	96 in.	102 in.
CAPACITY			1.0 cu. yd.	1.5 cu. yd.	2.0 cu. yd.
APPROX. WEIGHT			733 lbs.	899 lbs.	1089 lbs.
PART NO.			1001100822	1001100823	1001100824
MODEL	SN BREAKS	LOAD CHART BOOKLET			
JLG	642, 943, 1043, 1055, 1255 ONLY	Software, Chart Library	1001187087 (Ref No.)		
	642	Without Outriggers	1001212421	•	•
		With Outriggers	1001203057	•	•
	943/1043	Without Outriggers	1001212420	•	•
		With Outriggers	1001212419	•	•
	1055	Prior To 0160074169	1001212227	•	•
		0160074169 - Present	1001211156	•	•
	1255	Prior To 0160074168	1001212225	•	•
		0160074168 - Present	1001211153	•	•
	G15-44A	Prior To 0160074142	1001194130	•	•
		0160074142 - Present	1001211953	•	•
	SKYTRAK T4F	6036	0160069720 - 0160075649, incl 0160065792, 0160065798, 0160065824, 0160069383, 0160069411, 0160075653 & 0160075722	1001199500	•
0160075650 - Present, excl 0160075653 & 0160075722			1001211867	•	•
6042		0160069720 - 0160075656, incl 0160065792, 0160065798, 0160065824, 0160069383 & 0160069411	1001199504	•	•
		0160075657 - Present	1001211869	•	•
8042		0160069722 - 0160075670, incl 0160065791, 0160065796, 0160065825, 0160065826, 0160069336, 0160069359 & 0160069441	1001199508	•	•
		0160075671 - Present	1001211871	•	•
10042		0160069722 - 0160075987, incl 0160065791, 0160065796, 0160065825, 0160065826, 0160069336, 0160069359 & 0160069441	1001199512	•	•
		0160075988 - Present	1001211873	•	•
10054		0160069722 - 0160075682, incl 0160065791, 0160065796, 0160065825, 0160065826, 0160069336, 0160069359, 0160069441 & 0160075696	1001199518	•	•
		0160075683 - Present, excl 0160075696	1001211875	•	•

For SkyTrak Legacy machines, please refer to Non-Current Production SkyTrak table.

NOTES:

- Use only JLG approved attachments with proper material handler model/attachment load capacity charts displayed in the operator's cab.
 - Never use your attachment as a work platform or personnel carrier.
- Can't find the attachment you are looking for? Contact your JLG Aftermarket Parts representative at 1-877-JLG-LIFT or visit www.jlg.com.

ATTACHMENTS

Non-Current Production - Material Buckets, JLG Available Through JLG Aftermarket Parts

BUCKET WIDTH			72 in.	72 in.	73 in.	96 in.	102 in.	60 in.	74 in.	83 in.	83 in.	96 in.	96 in.	102 in.	
CAPACITY			1.0 cu. yd.	1.7 cu. yd.	1.0 cu. yd.	1.5 cu. yd.	2.0 cu. yd.	.75 cu. yd.	1.25 cu. yd.	1.05 cu. yd.	1.96 cu. yd.	1.18 cu. yd.	2.35 cu. yd.	1.25 cu. yd.	
APPROX. WEIGHT			733 lbs.	838 lbs.	710 lbs.	899 lbs.	1089 lbs.	500 lbs.	675 lbs.	639 lbs.	940 lbs.	712 lbs.	1041 lbs.	720 lbs.	
PART NO.			1001100822	1001102323*	1001102324*	1001100823	1001100824	91405054	91405055	09300008	09300009	09300015	09300016	91405071	
MODEL	SN BREAKS	LOAD CHART BOOKLET													
JLG	G5-18A	Quick coupler (hydraulic or manual)	1001102000	.	.										
	G5-19A	ALL	Consult Factory							.	.				
	619A	ALL	Consult Factory							.	.	.			
	G6-23A	ALL	Consult Factory									.	.		
	723A	ALL	Consult Factory									.	.		
	G6-42A	Prior To 0160037722	1001105323						.	.					.
		0160037722 - 0160040659	1001106001	.		.	.								
		0160040678 - Present	1001130793	.		.	.								
	G9-43A	Prior To 0160037671	1001105325						.	.					.
		0160037671 - 0160040674, excl 0160040468 & 0160040672	1001106002	.		.	.								
		0160040675 - Present, incl 0160040468 & 0160040672	1001130663	.		.	.								
	G10-43A	Prior To 0160037671	1001130935						.	.					.
		0160037671 - 0160040674, excl 0160040468 & 0160040672	100113013	.		.	.								
		0160040675 - Present, incl 0160040468 & 0160040672	1001130935	.		.	.								
	G10-55A	Prior To 0160037689	1001105707						.	.					.
		0160037690 - 0160038486, incl 0160038505 & 0160038507, excl 0160038324, 0160038489 & 0160038493	1001106003	.		.	.								
		0160038500 - Present, incl 0160038324, 0160038489 & 0160038493, excl 0160038505 & 0160038507	1001115135	.		.	.								
	G12-55A	Prior To 0160037689	1001105326						.	.					.
		0160037689 - 0160038533	1001106004	.		.	.								
		0160038538 - Present	1001115536	.		.	.								
TF6-42	ALL	Consult Factory					.	.					.		

* Replacement cutting edge not available separately

Non-Current Production - Material Buckets, Gradall Available Through JLG Aftermarket Parts

BUCKET WIDTH			60 in.	60 in.	72 in.	74 in.	74 in.	96 in.	102 in.	102 in.
CAPACITY			.75 cu. yd.	.75 cu. yd.	1.0 cu. yd.	1.25 cu. yd.	1.25 cu. yd.	1.5 cu. yd.	1.25 cu. yd.	2 cu. yd.
APPROX. WEIGHT			465 lbs.	500 lbs.	733 lbs.	643 lbs.	675 lbs.	899 lbs.	720 lbs.	1089 lbs.
PART NO.			90455049	91405054	1001100822	90555020	91405055	1001100823	91405071	1001100824
MODEL	SN BREAKS	LOAD CHART BOOKLET								
GRADALL	G6-42P	Prior To 0160037689	1001105324	.				.		.
		0160037689 - Present	1001106005		.			.		.
	522D/524D	ALL	Consult Factory	.		.				
	534D-6	ALL	Consult Factory	.		.				
	534D-9	Prior To 0160037689	1001102719	.		.				
		Prior To 0160037689	1001102720	.		.				
	534D-10	Prior To 0160037689	1001102721	.		.				
		0160037689 - Present	1001112753		.			.		.
	544D	Prior To 0160037689	1001102721		.			.		.
		0160037689 - Present	1001106008
534C-10	ALL	Consult Factory	.		.					

NOTES:

- Use only JLG approved attachments with proper material handler model/attachment load capacity charts displayed in the operator's cab.
- Never use your attachment as a work platform or personnel carrier.
- Can't find the attachment you are looking for? Contact your JLG Aftermarket Parts representative at 1-877-JLG-LIFT or visit www.jlg.com.

Non-Current Production - Material Buckets, SkyTrak Legacy
Available Through JLG Aftermarket Parts

BUCKET WIDTH			72 in.	96 in.	102 in.	96 in.	
CAPACITY			1.0 cu. yd.	1.5 cu. yd.	2.0 cu. yd.	1.25 cu. yd.	
APPROX. WEIGHT			733 lbs.	899 lbs.	1089 lbs.	795 lbs.	
PART NO.			1001100822	1001100823	1001100824	7110744	
MODEL	BREAK	LOAD CHART BOOKLET					
SKYTRAK LEGACY	6036	Prior To 0160031200	Consult Factory			.	
		0160031200 - 0160069719, excl 0160065792, 0160065798, 0160065824, 0160069383 & 0160069411	1001199500	.	.	.	
	6042	Prior To 0160031200	Consult Factory				.
		0160031200 - 0160069719, excl 0160065792, 0160065798, 0160065824, 0160069383 & 0160069411	1001199504	.	.	.	
	8042	Prior To 0160031235	Consult Factory				.
		0160031235 - 0160069721, excl 0160065791, 0160065796, 0160065825, 0160065826, 0160069336, 0160069359 & 0160069441	1001199508	.	.	.	
	10042	Prior To 0160031425	Consult Factory				.
		0160031425 - 0160069721, excl 0160065791, 0160065796, 0160065825, 0160065826, 0160069336, 0160069359 & 0160069441	1001199512	.	.	.	
	10054	Prior To 0160031255	Consult Factory				.
		0160031255 - 0160069721, excl 0160065791, 0160065796, 0160065825, 0160065826, 0160069336, 0160069359 & 0160069441	1001199518	.	.	.	
	4266	ALL	Consult Factory				.
	4270	ALL	Consult Factory				.
4290	ALL	Consult Factory				.	
5028	ALL	Consult Factory				.	

Non-Current Production - Material Buckets, Lull
Available Through JLG Aftermarket Parts

BUCKET WIDTH			72 in.	96 in.	102 in.	96 in.	96 in.
CAPACITY			1.0 cu. yd.	1.5 cu. yd.	2.0 cu. yd.	1.25 cu. yd.	1.25 cu. yd.
APPROX. WEIGHT			733 lbs.	899 lbs.	1089 lbs.	795 lbs.	540 lbs.
PART NO.			1001100822	1001100823	1001100824	7110744	1101435
MODEL	SN BREAKS	LOAD CHART BOOKLET					
LULL	644E-42	Prior To 0160031500	7300628				.
		0160037900 - Present	1001106009	.	.	.	
	944E-42	Prior To 0160031500	7301586				.
		0160037794 - Present, incl 0160045421	1001134329	.	.	.	
	1044C-54 SII	Prior To 0160037893	1001105327				.
		0160037794 - Present	1001106011	.	.	.	
	644B-37	ALL	Consult Factory				.
	644B-42	ALL	Consult Factory				.
	844C-42	ALL	Consult Factory				.
	6K-37	ALL	Consult Factory				.
	6K-42	ALL	Consult Factory				.
	8K-42	ALL	Consult Factory				.
	10K-42/10K-54	ALL	Consult Factory				.
	644D-34	ALL	Consult Factory				.

NOTES:

- Use only JLG approved attachments with proper material handler model/attachment load capacity charts displayed in the operator's cab.
 - Never use your attachment as a work platform or personnel carrier.
- Can't find the attachment you are looking for? Contact your JLG Aftermarket Parts representative at 1-877-JLG-LIFT or visit www.jlg.com.

Coupler Mounted Lifting Hook

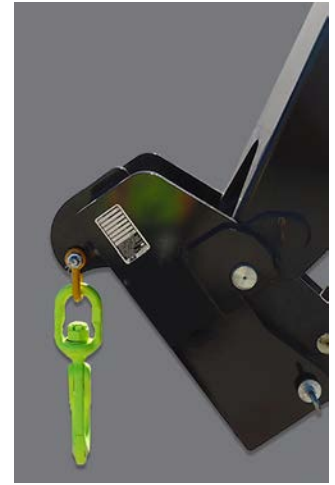
Optimize the use of your JLG telehandler with the new coupler mounted lifting hook. The lifting hook attaches directly to your machine, without the need of a carriage or forks. The lifting hook allows the ability to lift a suspended load without the obstruction of forks extending beyond the attachment.

Features

- Directly mounts onto machine coupler
- Picks up and carries loads as easily as a fork mounted lifting hook
- Increased visibility of load for operator

Specifications

- Maximum capacity: 15,000 lbs
- Maximum weight: 178 lbs
- Distance to center of gravity: 4.4 in



Current Production - Coupler Mounted Lifting Hook
Available Through JLG Aftermarket Or With New Machine Orders

CAPACITY		15,000 lbs.		
APPROX. WEIGHT		178 lbs.		
PART NO.		1001207606		
MODEL	SN BREAKS	LOAD CHART BOOKLET		
JLG	642, 943, 1043, 1055, 1255 ONLY	Software, Chart Library	1001187087 (Ref No.)	
	642	Without Outriggers	1001212421	▪
		With Outriggers	1001203057	▪
	943/1043	Without Outriggers	1001212420	▪
		With Outriggers	1001212419	▪
	1055	Prior To 0160074169	1001212227	▪
		0160074169 - Present	1001211156	▪
	1255	Prior To 0160074168	1001212225	▪
		0160074168 - Present	1001211153	▪
	G15-44A	Prior To 0160074142	1001194130	▪
		0160074142 - Present	1001211953	▪
	SKYTRAK T4F	6036	0160069720 - 0160075649, incl 0160065792, 0160065798, 0160065824, 0160069383, 0160069411, 0160075653 & 0160075722	1001199500
0160075650 - Present, excl 0160075653 & 0160075722			1001211867	▪
6042		0160069720 - 0160075656, incl 0160065792, 0160065798, 0160065824, 0160069383 & 0160069411	1001199504	▪
		0160075657 - Present	1001211869	▪
8042		0160069722 - 0160075670, incl 0160065791, 0160065796, 0160065825, 0160065826, 0160069336, 0160069359 & 0160069441	1001199508	▪
		0160075671 - Present	1001211871	▪
10042		0160069722 - 0160075987, incl 0160065791, 0160065796, 0160065825, 0160065826, 0160069336, 0160069359 & 0160069441	1001199512	▪
		0160075988 - Present	1001211873	▪
10054		0160069722 - 0160075682, incl 0160065791, 0160065796, 0160065825, 0160065826, 0160069336, 0160069359, 0160069441 & 0160075696	1001199518	▪
		0160075683 - Present, excl 0160075696	1001211875	▪

NOTES:

- Use only JLG approved attachments with proper material handler model/attachment load capacity charts displayed in the operator's cab.
 - Never use your attachment as a work platform or personnel carrier.
- Can't find the attachment you are looking for? Contact your JLG Aftermarket Parts representative at 1-877-JLG-LIFT or visit www.jlg.com.

Non-Current Production - Coupler Mounted Lifting Hook
Available Through JLG Aftermarket Parts

CAPACITY			15,000 lbs.	
APPROX. WEIGHT			178 lbs.	
PART NO.			1001207606	
	MODEL	SN BREAKS	LOAD CHART BOOKLET	
JLG	G6-42A	0160037722 - 0160040659	1001110401	.
		0160040678 - Present	1001130739	▪
	G9-43A	0160037671 - 0160040674, excl 0160040468 & 0160040672	1001110402	▪
		0160040675 - Present, incl 0160040468 & 0160040672	1001130708	▪
	G10-43A	0160037671 - 0160040674, excl 0160040468 & 0160040672	1001115257	▪
		0160040675 - Present, incl 0160040468 & 0160040672	1001130844	▪
	G10-55A	0160037690 - Present, incl 0160038505, 0160038507, 0160038324, 0160038489 & 0160038493	1001115138	▪
	G12-55A	0160037689 - Present	1001115540	▪

NOTES:

- Use only JLG approved attachments with proper material handler model/attachment load capacity charts displayed in the operator's cab.
 - Never use your attachment as a work platform or personnel carrier.
- Can't find the attachment you are looking for? Contact your JLG Aftermarket Parts representative at 1-877-JLG-LIFT or visit www.jlg.com.

Fork Mounted Lifting Hook

The fork mounted lifting hook provides the operator with the ability to lift and lower suspended loads without removing the carriage.

Features

- Not for use with cubing or block forks
- Maximum fork size: 2.36 in. x 7.09 in.
- Use standard load chart for all fork mounted lifting hooks.
- Fork drop must be at least 3.75" below bottom of carriage to lock pin.



Current Production - Fork Mounted Lifting Hook
Available Through JLG Aftermarket Or With New Machine Orders

LIFTING CAPACITY		12,000 lbs.	15,000 lbs.	
PART NO.		1001097205	1001193803	
MODEL	SN BREAKS			
JLG	642	Without Outriggers	.	
		With Outriggers	.	
	943/1043	Without Outriggers	.	
		With Outriggers	.	
	1055	Prior To 0160074169	.	
		0160074169 - Present	.	
	1255	Prior To 0160074168	.	
		0160074168 - Present	.	
	G15-44A	Prior To 0160074142		.
		0160074142 - Present		.
SKYTRAK T4F	6036	0160069720 - 0160075649, incl 0160065792, 0160065798, 0160065824, 0160069383, 0160069411, 0160075653 & 0160075722	.	
		0160075650 - Present, excl 0160075653 & 0160075722	.	
	6042	0160069720 - 0160075656, incl 0160065792, 0160065798, 0160065824, 0160069383 & 0160069411	.	
		0160075657 - Present	.	
	8042	0160069722 - 0160075670, incl 0160065791, 0160065796, 0160065825, 0160065826, 0160069336, 0160069359 & 0160069441	.	
		0160075671 - Present	.	
	10042	0160069722 - 0160075987, incl 0160065791, 0160065796, 0160065825, 0160065826, 0160069336, 0160069359 & 0160069441	.	
		0160075988 - Present	.	
	10054	0160069722 - 0160075682, incl 0160065791, 0160065796, 0160065825, 0160065826, 0160069336, 0160069359, 0160069441 & 0160075696	.	
		0160075683 - Present, excl 0160075696	.	

For SkyTrak Legacy machines, please refer to Non-Current Production SkyTrak table.

Use Appropriate Carriage Attachment Load Chart

NOTES:

- Use only JLG approved attachments with proper material handler model/attachment load capacity charts displayed in the operator's cab.
 - Never use your attachment as a work platform or personnel carrier.
- Can't find the attachment you are looking for? Contact your JLG Aftermarket Parts representative at 1-877-JLG-LIFT or visit www.jlg.com.

Non-Current Production - Fork Mounted Lifting Hook
Available Through JLG Aftermarket Parts

LIFTING CAPACITY		8000 lbs.	12,000 lbs.
PART NO.		2700118	1001097205
MODEL	SN BREAKS		
JLG	619A	ALL	.
	723A	ALL	.
	G5-18A	Universal (skid steer) quick coupler; 0160040809-Present	.
	G5-19A	ALL	.
	G6-23A	ALL	.
	G6-42A	0160037722 - 0160040659	.
		0160040678 - Present	.
	G9-43A	0160037671 - 0160040674, excl 0160040468 & 0160040672	.
		0160040675 - Present, incl 0160040468 & 0160040672	.
	G10-43A	0160037671 - 0160040674, excl 0160040468 & 0160040672	.
		0160040675 - Present, incl 0160040468 & 0160040672	.
G10-55A	0160037690 - 0160038486, incl 0160038505 & 0160038507; excl 0160038324, 0160038489 & 0160038493	.	
	0160038500 - Present, incl 0160038324, 0160038489 & 0160038493; excl 0160038505 & 0160038507	.	
G12-55A	0160037689-0160038533	.	
	0160038538 - Present	.	
GRADALL	G6-42P	0160037689 - Present	.
	522D/524D	ALL	.
	534D-6	ALL	.
	534D-9	0160037689 - Present	.
	534D-10	0160037689 - Present	.
	544D	0160037689 - Present	.
	534C-9	ALL	.
	534C-10	ALL	.
	544C	ALL	.
SKYTRAK	6036	0160031200 - 0160069719, excl 0160065792, 0160065798, 0160065824, 0160069383 & 0160069411	.
	6042	0160031200 - 0160069719, excl 0160065792, 0160065798, 0160065824, 0160069383 & 0160069411	.
	8042	0160031235 - 0160069721, excl 0160065791, 0160065796, 0160065825, 0160065826, 0160069336, 0160069359 & 0160069441	.
	10042	0160031425 - 0160069721, excl 0160065791, 0160065796, 0160065825, 0160065826, 0160069336, 0160069359 & 0160069441	.
	10054	0160031255 - 0160069721, excl 0160065791, 0160065796, 0160065825, 0160065826, 0160069336, 0160069359 & 0160069441	.
	4266	ALL	.
	4270	ALL	.
	4290	ALL	.
	5028	ALL	.
LULL	644B-37	ALL	.
	644B-42	ALL	.
	844C-42	ALL	.
	1044C-42	ALL	.
	1044C-54	ALL	.
	644D-34	ALL	.
	644E-42	0160037900 - Present	.
	944E-42	0160037794 - Present, incl 0160045421	.
	1044C-54 SII	Prior To 0160037793	.
	1044C-54 SII	0160037794 - Present	.

Use Appropriate Carriage Attachment Load Chart

NOTES:

- Use only JLG approved attachments with proper material handler model/attachment load capacity charts displayed in the operator's cab.
 - Never use your attachment as a work platform or personnel carrier.
- Can't find the attachment you are looking for? Contact your JLG Aftermarket Parts representative at 1-877-JLG-LIFT or visit www.jlg.com.

Fork Mounted Work Platform

Simply slide the forks into the work platform pockets, secure the locking pins and begin lifting people to working heights. The only ANSI approved fork mounted platform for JLG telehandlers.

Features

- Only for use with 48 in. pallet forks
- 4 ft. x 8 ft. platform
- Side entry with removable front rail
- 1000 lbs. capacity
- 3 lanyard attach points
- Fork pocket dimensions: 2.5 in. x 5.5 in. x 48 in.
- Fork drop must be 3.75" below carriage to be able to lock pin.



Current Production - Fork Mounted Work Platform

Available Through JLG Aftermarket Or With New Machine Orders

LENGTH		48"	
CAPACITY		1000 lb	
VERSION		English	
PART NO.		10011036375	
MODEL	SN BREAKS		
JLG	642	Without Outriggers	•
		With Outriggers	•
	943/1043	Without Outriggers	•
		With Outriggers	•
	1055	Prior To 0160074169	•
		0160074169 - Present	•
	1255	Prior To 0160074168	•
		0160074168 - Present	•
	G15-44A	Prior To 0160074142	•
		0160074142 - Present	•
SKYTRAK T4F	6036	0160069720 - 0160075649, incl 0160065792, 0160065798, 0160065824, 0160069383, 0160069411, 0160075653 & 0160075722	•
		0160075650 - Present, excl 0160075653 & 0160075722	•
	6042	0160069720 - 0160075656, incl 0160065792, 0160065798, 0160065824, 0160069383 & 0160069411	•
		0160075657 - Present	•
	8042	0160069722 - 0160075670, incl 0160065791, 0160065796, 0160065825, 0160065826, 0160069336, 0160069359 & 0160069441	•
		0160075671 - Present	•
	10042	0160069722 - 0160075987, incl 0160065791, 0160065796, 0160065825, 0160065826, 0160069336, 0160069359 & 0160069441	•
		0160075988 - Present	•
	10054	0160069722 - 0160075682, incl 0160065791, 0160065796, 0160065825, 0160065826, 0160069336, 0160069359, 0160069441 & 0160075696	•
		0160075683 - Present, excl 0160075696	•

For SkyTrak Legacy machines, please refer to Non-Current Production SkyTrak table.

Use Appropriate Carriage Attachment Load Chart

NOTES:

- Use only JLG approved attachments with proper material handler model/attachment load capacity charts displayed in the operator's cab.
- Can't find the attachment you are looking for? Contact your JLG Aftermarket Parts representative at 1-877-JLG-LIFT or visit www.jlg.com.

Non-Current Production - Fork Mounted Work Platform
Available Through JLG Aftermarket Parts

LENGTH		48"	
CAPACITY		1000 lbs.	
VERSION		English	
PART NO.		1001103637S	
MODEL	SN BREAKS		
JLG	619A	ALL	•
	723A	ALL	•
	G5-19A	ALL	•
	G6-23A	ALL	•
	G6-42A	0160037722 - 0160040659	•
		0160040678 - Present	•
	G9-43A	0160037671 - 0160040674, excl 0160040468 & 0160040672	•
		0160040675 - Present, incl 0160040468 & 0160040672	•
	G10-43A	0160037671 - 0160040674, excl 0160040468 & 0160040672	•
		0160040675 - Present, incl 0160040468 & 0160040672	•
	G10-55A	0160037690 - 0160038486, incl 0160038505 & 0160038507, excl 0160038324, 0160038489 & 0160038493	•
		0160038500 - Present, incl 0160038324, 0160038489 & 0160038493, excl 0160038505 & 0160038507	•
	G12-55A	0160037689 - 0160038533	•
		0160038538 - Present	•
	TF6-42	ALL	•
GRADALL	G6-42P	Prior To 0160037689	•
	522/524D	ALL	•
	534C9	ALL	•
	534C10	ALL	•
	534D6	ALL	•
	534D-9	Prior To 0160037689	•
		0160037689 - Present	•
	534D-10	Prior To 0160037689	•
		0160037689 - Present	•
	534D10-45	ALL	•
	544C	ALL	•
	544D	Prior To 0160037689	•
		0160037689 - Present	•
	544D10-55	ALL	•

Use Appropriate Carriage Attachment Load Chart

Non-Current Production - Fork Mounted Work Platform
Available Through JLG Aftermarket Parts

LENGTH		48"	
CAPACITY		1000 lbs.	
VERSION		English	
PART NO.		1001103637S	
MODEL	SN BREAKS		
SKYTRAK LEGACY	4266	ALL	•
	4270	ALL	•
	4290	ALL	•
	5028	ALL	•
	6036	0160031200 - 0160069719, excl 0160065792, 0160065798, 0160065824, 0160069383 & 0160069411	•
	6042	0160031200 - 0160069719, excl 0160065792, 0160065798, 0160065824, 0160069383 & 0160069411	•
	8042	0160031235 - 0160069721, excl 0160065791, 0160065796, 0160065825, 0160065826, 0160069336, 0160069359 & 0160069441	•
	10042	0160031425 - 0160069721, excl 0160065791, 0160065796, 0160065825, 0160065826, 0160069336, 01600669359 & 0160069441	•
		0160031255 - 0160069721, excl 0160065791, 0160065796, 0160065825, 0160065826, 0160069336, 01600669359 & 0160069441	•
	644B-37	ALL	•
	644B-42	ALL	•
	644D-34	ALL	•
644E-42	0160037900 - Present	•	
844C-42	ALL	•	
944E-42	0160037794 - Present, incl 0160045421	•	
1044C-42	ALL	•	
1044C-54	0160037893 - Present	•	
1044C-54 SII	0160037794 - Present	•	

NOTES:

- Use only JLG approved attachments with proper material handler model/attachment load capacity charts displayed in the operator's cab.
- Can't find the attachment you are looking for? Contact your JLG Aftermarket Parts representative at 1-877-JLG-LIFT or visit www.jlg.com.

Material Handling Arm

Optimize the use of your telehandler with the JLG material handling arm. The three-way adjustable arm allows your machine more movement and versatility, adding to jobsite productivity and efficiency.

The material handling arm is excellent for various industries, including: construction, civil engineering applications, contractors and the rental industry.

Features

- Telescoping capabilities in three locked positions.
- Multiple lift points allow the material handling arm to handle different load lengths and weights
 - Fully extended: 2000 lbs lift capacity
 - Mid-boom extension: 3000 lbs lift capacity
 - Fully retracted: 4000 lbs lift capacity
- Arm extends and retracts manually for reliable operation.

Specifications

- Distance to center of gravity: 3.7 inches



Current Production - Material Handling Arm

Available Through JLG Aftermarket Or With New Machine Orders

CAPACITY			2000 - 4000 lbs.	
WEIGHT			952 lbs.	
PART NO.			1001176515	
MODEL	SN BREAKS	LOAD CHART BOOKLET		
JLG	642, 943, 1043, 1055, 1255 ONLY	Software, Chart Library	1001187087 (Ref No)	
	642	Without Outriggers	1001212421	•
		With Outriggers	1001203057	•
	943/1043	Without Outriggers	1001212420	•
		With Outriggers	1001212419	•
	1055	Prior To 0160074169	1001212227	•
		0160074169 - Present	1001211156	•
	1255	Prior To 0160074168	1001212225	•
		0160074168 - Present	1001211153	•
	SKYTRAK™	6036	0160069720 - 0160075649, incl 0160065792, 0160065798, 0160065824, 0160069383, 0160069411, 0160075653 & 0160075722	1001199500
0160075650 - Present, excl 0160075653 & 0160075722			1001211867	•
6042		0160069720 - 0160075656, incl 0160065792, 0160065798, 0160065824, 0160069383 & 0160069411	1001199504	•
		0160075657 - Present	1001211869	•
8042		0160069722 - 0160075670, incl 0160065791, 0160065796, 0160065825, 0160065826, 0160069336, 0160069359 & 0160069441	1001199508	•
		0160075671 - Present	1001211871	•
10042		0160069722 - 0160075987, incl 0160065791, 0160065796, 0160065825, 0160065826, 0160069336, 0160069359 & 0160069441	1001199512	•
		0160075988 - Present	1001211873	•
10054		0160069722 - 0160075682, incl 0160065791, 0160065796, 0160065825, 0160065826, 0160069336, 0160069359, 0160069441 & 0160075696	1001199518	•
		0160075683 - Present, excl 0160075696	1001211875	•

For SkyTrak Legacy machines, please refer to Non-Current Production SkyTrak table.

NOTES:

- Use only JLG approved attachments with proper material handler model/attachment load capacity charts displayed in the operator's cab.
 - Never use your attachment as a work platform or personnel carrier.
- Can't find the attachment you are looking for? Contact your JLG Aftermarket Parts representative at 1-877-JLG-LIFT or visit www.jlg.com.

Non-Current Production - Material Handling Arm
Available Through JLG Aftermarket Parts

CAPACITY				2000 - 4000 lbs.
WEIGHT				952 lbs.
JLG PART NO.				1001176515
MODEL	SN BREAKS	LOAD CHART BOOKLET		
JLG	G6-42A	0160037722 - 0160040659	100110401	•
		0160040678 - Present	1001130739	•
	G9-43A	0160037671 - 0160040674, excl 0160040468 & 0160040672	100110402	•
		0160040675 - Present, incl 0160040468 & 0160040672	1001130708	•
	G10-43A	0160037671 - 0160040674, excl 0160040468 & 0160040672	100115257	•
		0160040675 - Present, incl 0160040468 & 0160040672	1001130844	•
	G10-55A	0160037690 - Present, incl 0160038505, 0160038507, 0160038324, 0160038489 & 0160038493	100115138	•
G12-55A	0160037689 - Present	100115540	•	
SKYTRAK LEGACY	6036	0160031200 - 0160069719, excl 0160065792, 0160065798, 0160065824, 0160069383 & 0160069411	1001199500	•
	6042	0160031200 - 0160069719, excl 0160065792, 0160065798, 0160065824, 0160069383 & 0160069411	1001199504	•
	8042	0160031235 - 0160069721, excl 0160065791, 0160065796, 0160065825, 0160065826, 0160069336, 0160069359 & 0160069441	1001199508	•
	10042	0160031425 - 0160069721, excl 0160065791, 0160065796, 0160065825, 0160065826, 0160069336, 0160069359 & 0160069441	1001199512	•
	10054	0160031255 - 0160069721, excl 0160065791, 0160065796, 0160065825, 0160065826, 0160069336, 0160069359 & 0160069441	1001199518	•

NOTES:

- Use only JLG approved attachments with proper material handler model/attachment load capacity charts displayed in the operator's cab.
 - Never use your attachment as a work platform or personnel carrier.
- Can't find the attachment you are looking for? Contact your JLG Aftermarket Parts representative at 1-877-JLG-LIFT or visit www.jlg.com.

Pipe Grapple

Optimize the use of your Telehandler with the JLG Pipe Grapple. The Pipe Grapple handles various pipe diameters and configurations. The arms fold down on the pipe/poles to secure and prevent the load from rolling off or tipping sideways. The arm design offers the most versatility for handling various diameters and lengths. When idle, the arm assembly pivots to the full vertical position so the truck can be utilized for typical loads.

Features

- Can handle long pipe or pole material efficiently
- Help to stabilize a load of long pipes or poles
- Specially designed clamping arms mounted on top of carriage

Specifications

- 72" carriage
- 48" Forks (ITA - hook mounted)
- 2" - 30" pipe diameter



Current Production - Pipe Grapple

Available Through JLG Aftermarket Or With New Machine Orders

CARRIAGE SIZE			72"	72"	72"	
CAPACITY			2000 lbs.	3000 lbs.	6000 lbs.	
APPROX. WEIGHT			1701 lbs.	1701 lbs.	1701 lbs.	
PART NO.			1001142247	1001142247	1001142247	
MODEL	SN BREAKS	LOAD CHART BOOKLET				
JLG	642, 943, 1043, 1055, 1255 ONLY	Software, Chart Library	1001187087 (Ref No.)			
	1055	Prior To 0160074169	1001212227		•	
		0160074169 - Present	1001211156			•
	1255	Prior To 0160074168	1001212225			•
		0160074168 - Present	1001211153			•
	G15-44A	Prior To 0160074142	1001194130		•	
0160074142 - Present		1001211953		•		
SKYTRAK™	8042	0160069722 - 0160075670, incl 0160065791, 0160065796, 0160065825, 0160065826, 0160069336, 0160069359 & 0160069441	1001199508	•	•	
		0160075671 - Present	1001211871	•	•	
	10042	0160069722 - 0160075987, incl 0160065791, 0160065796, 0160065825, 0160065826, 0160069336, 0160069359 & 0160069441	1001199512	•	•	•
		0160075988 - Present	1001211873	•	•	•
	10054	0160069722 - 0160075682, incl 0160065791, 0160065796, 0160065825, 0160065826, 0160069336, 0160069359, 0160069441 & 0160075696	1001199518	•	•	•
		0160075683 - Present, excl 0160075696	1001211875	•	•	•

For SkyTrak Legacy machines, please refer to Non-Current Production SkyTrak table.

Non-current models on next page

NOTES:

- Use only JLG approved attachments with proper material handler model/attachment load capacity charts displayed in the operator's cab.
 - Never use your attachment as a work platform or personnel carrier.
- Can't find the attachment you are looking for? Contact your JLG Aftermarket Parts representative at 1-877-JLG-LIFT or visit www.jlg.com.

Non-Current Production - Pipe Grapple
Available Through JLG Aftermarket Parts

CARRIAGE SIZE				72"	72"	72"
CAPACITY				2000 lbs.	3000 lbs.	6000 lbs.
APPROX. WEIGHT				1701 lbs.	1701 lbs.	1701 lbs.
PART NO.				1001142247	1001142247	1001142247
	MODEL	SN BREAKS	LOAD CHART BOOKLET			
JLG	G10-55A	0160037690 - Present, incl 0160038505, 0160038507, 0160038324, 0160038489 & 0160038493	100115138		•	
	G12-55A	0160037689 - Present	100115540		•	
SKYTRAK LEGACY	8042	0160031235 - 0160069721, excl 0160065791, 0160065796, 0160065825, 0160065826, 0160069336, 0160069359 & 0160069441	1001199508	•		•
	10042	0160031425 - 0160069721, excl 0160065791, 0160065796, 0160065825, 0160065826, 0160069336, 01600669359 & 0160069441	1001199512	•		•
	10054	0160031255 - 0160069721, excl 0160065791, 0160065796, 0160065825, 0160065826, 0160069336, 0160069359 & 0160069441	1001199518	•		•

Round Fork Tines

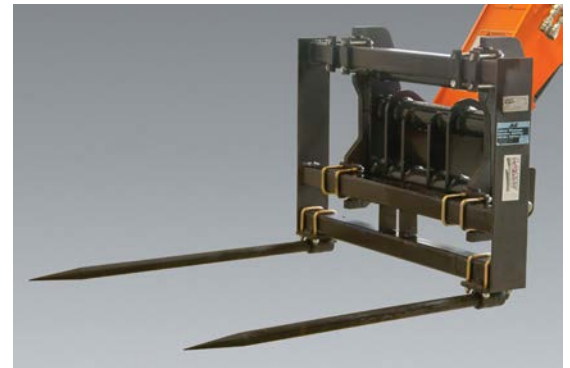
The round fork tines allow for stability of the hay bale while maneuvering around objects.

Features

- Work range of 4 ft.

Non-Current Production - Round Fork Tines
Available Through JLG Aftermarket Parts

PART NO.			2340035
	MODEL	SN BREAKS	LOAD CHART BOOKLET
JLG	619A	ALL	Consult Factory
	723A	ALL	Consult Factory



NOTES:

- Use only JLG approved attachments with proper material handler model/attachment load capacity charts displayed in the operator's cab.
 - Never use your attachment as a work platform or personnel carrier.
- Can't find the attachment you are looking for? Contact your JLG Aftermarket Parts representative at 1-877-JLG-LIFT or visit www.jlg.com.

Sheet Material Adapters

The sheet material adapter is ideal for carrying large, flat materials such as drywall, steel plates or plywood, limiting damage during transport.

Features

- May be used with standard, side-tilt or swing carriage
- May be used with pallet or lumber forks
- Includes swing function: 45 degrees right or left
- 72 in. carriage required



Current Production - Sheet Material Adapters

Available Through JLG Aftermarket Or With New Machine Orders

PART NO.			10011002275*	
MODEL	SN BREAKS	LOAD CHART BOOKLET		
SKYTRAK™	6036	0160069720 - 0160075649, incl 0160065792, 0160065798, 0160065824, 0160069383, 0160069411, 0160075653 & 0160075722	1001199500	•
		0160075650 - Present, excl 0160075653 & 0160075722	1001211867	•
	6042	0160069720 - 0160075656, incl 0160065792, 0160065798, 0160065824, 0160069383 & 0160069411	1001199504	•
		0160075657 - Present	1001211869	•
	8042	0160069722 - 0160075670, incl 0160065791, 0160065796, 0160065825, 0160065826, 0160069336, 0160069359 & 0160069441	1001199508	•
		0160075671 - Present	1001211871	•
	10042	0160069722 - 0160075987, incl 0160065791, 0160065796, 0160065825, 0160065826, 0160069336, 0160069359 & 0160069441	1001199512	•
		0160075988 - Present	1001211873	•
	10054	0160069722 - 0160075682, incl 0160065791, 0160065796, 0160065825, 0160065826, 0160069336, 0160069359, 0160069441 & 0160075696	1001199518	•
		0160075683 - Present, excl 0160075696	1001211875	•

For SkyTrak Legacy machines, please refer to Non-Current Production SkyTrak table.

*PN 10011002275 is just the adapter - no carriage included

Non-Current Production - Sheet Material Carriage and Adapters

Available Through JLG Aftermarket Parts

CARRIAGE SIZE			72 in.	72 in.	72 in.	72 in.	N/A
CARRIAGE TYPE			Swing	Swing	Swing	Standard	N/A
PART NO.			7129300S	90555013	91405078	91405077	10011002275*
MODEL	SN BREAKS	LOAD CHART BOOKLET					
JLG*	G6-42A	Prior To 0160037722	1001105323			•	•
		0160037722 - 0160040659	1001106001	•			•
		0160040678 - Present	1001130793	•			•
G9-43A	Prior To 0160037671	1001105325			•	•	
		0160037671 - 0160040674, excl 0160040468 & 0160040672	1001106002	•			•
		0160040675 - Present, incl 0160040468 & 0160040672	1001130663	•			•

Continues on next page

*PN 10011002275 is just the adapter - no carriage included

*Swing material handler carriage on JLG and Gradall models requires auxiliary hydraulics

NOTES:

- Use only JLG approved attachments with proper material handler model/attachment load capacity charts displayed in the operator's cab.
 - Never use your attachment as a work platform or personnel carrier.
- Can't find the attachment you are looking for? Contact your JLG Aftermarket Parts representative at 1-877-JLG-LIFT or visit www.jlg.com.

Non-Current Production - Sheet Material Carriage and Adapters
Available Through JLG Aftermarket Parts

Continued from previous page

CARRIAGE SIZE			72 in.	72 in.	72 in.	72 in.	N/A	
CARRIAGE TYPE			Swing	Swing	Swing	Standard	N/A	
PART NO.			7129300S	90555013	91405078	91405077	1001100227S*	
MODEL	SN BREAKS	LOAD CHART BOOKLET						
JLG*	G10-43A	0160037671 - 0160040674, excl 0160040468 & 0160040672	1001113013	.			.	
		0160040675 - Present, incl 0160040468 & 0160040672	1001130935	.			.	
	G10-55A	Prior To 0160037689	1001105707			.	.	
		0160037690 - 0160038486, incl 0160038505 & 0160038507, excl 0160038324, 0160038489 & 0160038493	1001106003	.				.
		0160038500 - Present, incl 0160038324, 0160038489 & 0160038493, excl 0160038505 & 0160038507	1001115135	.				.
	G12-55A	Prior To 0160037689	1001105326			.	.	
		0160037689 - 0160038533	1001106004	.				.
0160038538 & Present		1001115536	.				.	
TF6-42	ALL	Consult Factory			.	.		
GRADALL*	G6-42P	Prior To 0160037689	1001105324			.	.	
		0160037689 - Present	1001106005				.	
	534D-9	Prior To 0160037689	1001102719		.			
		0160037689 - Present	1001112753					.
	534D-10	Prior To 0160037689	1001102720		.			
		0160037689 - Present	1001112753					.
	544D	Prior To 0160037689	1001102721		.			
		0160037689 - Present	1001106008					.
SKYTRAK LEGACY	6036	0160031200 - 0160069719, excl 0160065792, 0160065798, 0160065824, 0160069383 & 0160069411	1001199500				.	
	6042	0160031200 - 0160069719, excl 0160065792, 0160065798, 0160065824, 0160069383 & 0160069411	1001199504				.	
	8042	0160031235 - 0160069721, excl 0160065791, 0160065796, 0160065825, 0160065826, 0160069336, 0160069359 & 0160069441	1001199508				.	
	10042	0160031425 - 0160069721, excl 0160065791, 0160065796, 0160065825, 0160065826, 0160069336, 0160069359 & 0160069441	1001199512				.	
	10054	0160031255 - 0160069721, excl 0160065791, 0160065796, 0160065825, 0160065826, 0160069336, 0160069359 & 0160069441	1001199518				.	
SKYTRAK	4266	ALL	Consult Factory	.				
	4270	ALL	Consult Factory	.				
	4290	ALL	Consult Factory	.				
	5028	ALL	Consult Factory	.				
	6036	Prior To 0160031200	Consult Factory	.				
	6042	Prior To 0160031200	Consult Factory	.				
	8042	Prior To 0160031235	Consult Factory	.				
	10042	Prior To 0160031425	Consult Factory	.				
	10054	Prior To 0160031255	Consult Factory	.				
LULL	644E-42	Prior To 0160031500	7300628	.				
	644E-42	0160037794 - Present, incl 0160045421	1001134329				.	
	944E-42	Prior To 0160031500	7301586	.				
	944E-42	0160037794 - Present	1001106011				.	
	1044C-54SII	0160037900 - Present	1001106009				.	

*PN 1001100227S is just the adapter - no carriage included

*Swing material handler carriage on JLG and Gradall models requires auxillary hydraulics

NOTES:

- Use only JLG approved attachments with proper material handler model/attachment load capacity charts displayed in the operator's cab.
 - Never use your attachment as a work platform or personnel carrier.
- Can't find the attachment you are looking for? Contact your JLG Aftermarket Parts representative at 1-877-JLG-LIFT or visit www.jlg.com.

Sweeper

Our heavy duty sweeper is durable enough to perform under the most challenging conditions and is capable of handling all types of materials, including fine dirt, gravel, millings and other debris.

Features

- Increased bucket capacity by 22% with less carry over
- Increase efficiency by dumping less frequently with a larger capacity bucket
- A simple tool-less adjustment knob allows you to accommodate brush wear and still maintain increased bucket capacity.
- Ideal for heavy duty cleanup, millings and snow removal
- High dump feature activated by reversing flow
- Hopper positioned in front
- Powered from loader hydraulics
- Designed and manufactured to construction grade
- Quick Attach mounts
- Industrial quality motor
- Broom rotates clockwise for maneuverability
- Hopper opens for dumping



Specifications

- Max Capacity: 1717 lbs.
- Max. Weight: 1490 lbs
- Width (overall): 105 in
- Length (w/o quick coupler): 72.25 in
- Max. Hydraulic Pressure: 3500 PSI
- Distance to Center of Gravity: 32 in.
- Brush Diameter: 26 in.
- Flow Range: 15-50 GPM
- Brush Width: 7ft.
- Sweeping Width: 84 in.
- Hopper Capacity: .53 yd³

Current Production - Sweeper

Available Through JLG Aftermarket Or With New Machine Orders

CAPACITY				1717 lbs.
APPROX. WEIGHT				1490 lbs.
PART NO.				1001202904
MODEL	SN BREAKS			LOAD CHART BOOKLET
JLG	642, 943, 1043, 1055, 1255 ONLY	Software, Chart Library		1001187087 (Ref No.)
	642	No Outriggers		1001212421
		With Outriggers		1001203057
	943/1043	No Outriggers		1001212420
		With Outriggers		1001212419
	1055	Prior To 0160074169		1001212227
		0160074169 - Present		1001211156
	1255	Prior To 0160074168		1001212225
		0160074168 - Present		1001211153
	SKYTRAK™	6036	0160069720 - 0160075649, incl 0160065792, 0160065798, 0160065824, 0160069383, 0160069411, 0160075653 & 0160075722	
0160075650 - Present, excl 0160075653 & 0160075722			1001211867	
6042		0160069720 - 0160075656, incl 0160065792, 0160065798, 0160065824, 0160069383 & 0160069411		1001199504
		0160075657 - Present		1001211869
8042		0160069722 - 0160075670, incl 0160065791, 0160065796, 0160065825, 0160065826, 0160069336, 0160069359 & 0160069441		1001199508
		0160075671 - Present		1001211871
10042		0160069722 - 0160075987, incl 0160065791, 0160065796, 0160065825, 0160065826, 0160069336, 0160069359 & 0160069441		1001199512
		0160075988 - Present		1001211873
10054		0160069722 - 0160075682, incl 0160065791, 0160065796, 0160065825, 0160065826, 0160069336, 0160069359, 0160069441 & 0160075696		1001199518
		0160075683 - Present, excl 0160075696		1001211875

Additional/Replacement Parts:

Dust cap that installs on female quick connect fitting is PN 8420055

Replacement polyester/wire sweeper brush is PN 70011926

NOTES:

- Use only JLG approved attachments with proper material handler model/attachment load capacity charts displayed in the operator's cab.
- Never use your attachment as a work platform or personnel carrier.

Can't find the attachment you are looking for? Contact your JLG Aftermarket Parts representative at 1-877-JLG-LIFT or visit www.jlg.com.

Non-Current Production - Sweeper
Available Through JLG Aftermarket Parts

CAPACITY			1717 lbs.	
APPROX. WEIGHT			1490 lbs.	
PART NO.			1001202904	
	MODEL	SN BREAKS	LOAD CHART BOOKLET	
JLG	G6-42A	0160037722 - 0160040659	1001110401	•
		0160040678 - Present	1001130739	•
	G9-43A	0160037671 - 0160040674, excl 0160040468 & 0160040672	1001110402	•
		0160040675 - Present, incl 0160040468 & 0160040672	1001130708	•
	G10-43A	0160037671 - 0160040674, excl 0160040468 & 0160040672	1001115257	•
		0160040675 - Present, incl 0160040468 & 0160040672	1001130844	•
	G10-55A	0160037690 - Present, incl 0160038505, 0160038507, 0160038324, 0160038489 & 0160038493	1001115138	•
	G12-55A	0160037689 - Present	1001115540	•

Additional/Replacement Parts:

Dust cap that installs on female quick connect fitting is PN 8420055
Replacement polyester/wire sweeper brush is PN 70011926

NOTES:

- Use only JLG approved attachments with proper material handler model/attachment load capacity charts displayed in the operator's cab.
 - Never use your attachment as a work platform or personnel carrier.
- Can't find the attachment you are looking for? Contact your JLG Aftermarket Parts representative at 1-877-JLG-LIFT or visit www.jlg.com.

Trash Hopper

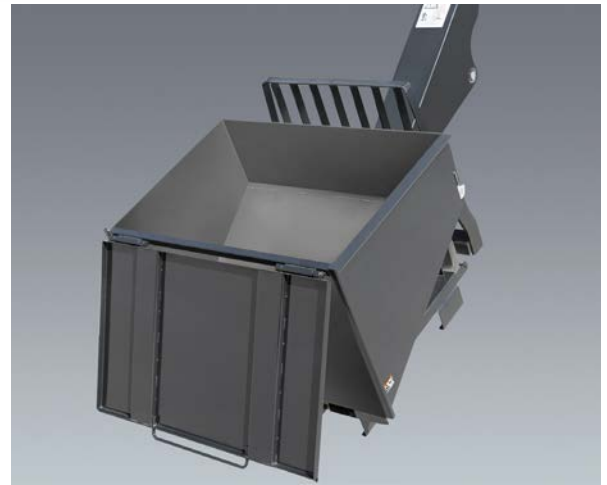
The Trash Hopper can increase job site efficiency by reducing the time and personnel required to move trash and other debris to and from elevated sites. Once the bar under the hopper is placed on the trash bin and pressure is applied, the hopper can be tilted forward and the door will open to allow trash to fall out. To latch the door again, simply tilt the hopper back. The exclusive JLG design of the bar mechanism does not allow the door to open when no pressure has been applied.

Features

- Saves time from moving trash to and from elevated sites
- Allows operator to remain safely in the cab with the hands-off bar design
- Increases productivity as operator can quickly empty the hopper without leaving the seat

Specifications

- Maximum Capacity:
 - 72"
 - 1.9 cubic yard capacity
 - 2000 lbs. maximum weight capacity
- Maximum Weight: 864 lbs.
- Distance to center of gravity: 32.5 in.



SEE IT IN ACTION!

Visit <https://goo.gl/FHyNbP> or on Online Express, click on Attachments/Trash Hopper and look for the link.

Current Production - Trash Hopper

Available Through JLG Aftermarket Or With New Machine Orders

CAPACITY			2000 lbs.	
APPROX. WEIGHT			864 lbs.	
PART NO.			1001195082	
MODEL	SN BREAKS	LOAD CHART BOOKLET		
JLG	642, 943, 1043, 1055, 1255 ONLY	Software, Chart Library	1001187087 (Ref No.)	
	642	Without Outriggers	1001212421	•
		With Outriggers	1001203057	•
	943/1043	Without Outriggers	1001212420	•
		With Outriggers	1001212419	•
	1055	Prior To 0160074169	1001212227	•
		0160074169 - Present	1001211156	•
	1255	Prior To 0160074168	1001212225	•
		0160074168 - Present	1001211153	•
	SKYTRAK T4F	6036	0160069720 - 0160075649, incl 0160065792, 0160065798, 0160065824, 0160069383, 0160069411, 0160075653 & 0160075722	1001199500
0160075650 - Present, excl 0160075653 & 0160075722			1001211867	•
6042		0160069720 - 0160075656, incl 0160065792, 0160065798, 0160065824, 0160069383 & 0160069411	1001199504	•
		0160075657 - Present	1001211869	•
8042		0160069722 - 0160075670, incl 0160065791, 0160065796, 0160065825, 0160065826, 0160069336, 0160069359 & 0160069441	1001199508	•
		0160075671 - Present	1001211871	•
10042		0160069722 - 0160075987, incl 0160065791, 0160065796, 0160065825, 0160065826, 0160069336, 0160069359 & 0160069441	1001199512	•
		0160075988 - Present	1001211873	•
10054		0160069722 - 0160075682, incl 0160065791, 0160065796, 0160065825, 0160065826, 0160069336, 0160069359, 0160069441 & 0160075696	1001199518	•
		0160075683 - Present, excl 0160075696	1001211875	•

NOTES:

- Use only JLG approved attachments with proper material handler model/attachment load capacity charts displayed in the operator's cab.
 - Never use your attachment as a work platform or personnel carrier.
- Can't find the attachment you are looking for? Contact your JLG Aftermarket Parts representative at 1-877-JLG-LIFT or visit www.jlg.com.

Non-Current Production - Trash Hopper
Available Through JLG Aftermarket Parts

CAPACITY			2000 lbs.
APPROX. WEIGHT			864 lbs.
PART NO.			1001195082
	MODEL	SN BREAKS	LOAD CHART BOOKLET
JLG	G6-42A	0160037722 - 0160040659	1001110401
		0160040678 - Present	1001130739
	G9-43A	0160037671 - 0160040674, excl 0160040468 & 0160040672	1001110402
		0160040675 - Present, incl 0160040468 & 0160040672	1001130708
	G10-43A	0160037671 - 0160040674, excl 0160040468 & 0160040672	1001115257
		0160040675 - Present, incl 0160040468 & 0160040672	1001130844
	G10-55A	0160037690 - Present, incl 0160038505, 0160038507, 0160038324, 0160038489 & 0160038493	1001115138
	G12-55A	0160037689 - Present	1001115540

NOTES:

- Use only JLG approved attachments with proper material handler model/attachment load capacity charts displayed in the operator's cab.
 - Never use your attachment as a work platform or personnel carrier.
- Can't find the attachment you are looking for? Contact your JLG Aftermarket Parts representative at 1-877-JLG-LIFT or visit www.jlg.com.

Truss Boom

When lifting and lowering roof trusses, framing walls or steel beams into place, use the truss boom; available with or without a winch.

Features

- Truss boom with winch feature requires auxiliary hydraulics



Current Production - Truss Boom
Available Through JLG Aftermarket Or With New Machine Orders

LENGTH			3 ft.	12 ft.	12 ft.	15 ft.	
WINCH			Yes	No	Yes	No	
CAPACITY			4000 lbs.	2000 lbs.	2000 lbs.	2000 lbs.	
PART NO.			1001100967S	1001099902S	1001099351	1001099901S	
MODEL	SN BREAKS	LOAD CHART BOOKLET					
JLG	642, 943, 1043, 1055, 1255 ONLY	Software, Chart Library	1001187087 (Ref No.)				
	642	Without Outriggers	1001212421
		With Outriggers	1001203057
	943/1043	Without Outriggers	1001212420
		Without Outriggers	1001212419
	1055	Prior To 0160074169	1001212227
		0160074169 - Present	1001211156
	1255	Prior To 0160074168	1001212225
		0160074168 - Present	1001211153
	G15-44A	Prior To 0160074142	1001194130
		0160074142 - Present	1001211953
	SKYTRAK T4F	6036	0160069720 - 0160075649, incl 0160065792, 0160065798, 0160065824, 0160069383, 0160069411, 0160075653 & 0160075722	1001199500	.	.	.
0160075650 - Present, excl 0160075653 & 0160075722			1001211867
6042		0160069720 - 0160075656, incl 0160065792, 0160065798, 0160065824, 0160069383 & 0160069411	1001199504
		0160075657 - Present	1001211869
8042		0160069722 - 0160075670, incl 0160065791, 0160065796, 0160065825, 0160065826, 0160069336, 0160069359 & 0160069441	1001199508
		0160075671 - Present	1001211871
10042		0160069722 - 0160075987, incl 0160065791, 0160065796, 0160065825, 0160065826, 0160069336, 0160069359 & 0160069441	1001199512
		0160075988 - Present	1001211873
10054		0160069722 - 0160075682, incl 0160065791, 0160065796, 0160065825, 0160065826, 0160069336, 0160069359, 0160069441 & 0160075696	1001199518
		0160075683 - Present, excl 0160075696	1001211875

For SkyTrak Legacy machines, please refer to Non-Current Production SkyTrak table.

NOTES:

- Use only JLG approved attachments with proper material handler model/attachment load capacity charts displayed in the operator's cab.
 - Never use your attachment as a work platform or personnel carrier.
- Can't find the attachment you are looking for? Contact your JLG Aftermarket Parts representative at 1-877-JLG-LIFT or visit www.jlg.com.

Non-Current Production - Truss Boom, JLG
Available Through JLG Aftermarket Parts

LENGTH			3 ft.	11.86 ft.	10 ft.	12 ft.	12 ft.	15 ft.	15 ft.	
WINCH			Yes	No	No	No	Yes	No	No	
CAPACITY			4000 lbs.	1433 lbs.	2000 lbs.	2000 lbs.	2000 lbs.	2000 lbs.	2000 lbs.	
PART NO.			1001100967S	0240110	91405083	1001099902S	1001099351	91405082	1001099901S	
MODEL	SN BREAKS	LOAD CHART BOOKLET								
JLG	G5-19A	ALL	Consult Factory	.						
	619A	ALL	Consult Factory	.						
	G6-23A	ALL	Consult Factory	.						
	723A	ALL	Consult Factory				.	.	.	
	G6-42A	Prior To 0160037722	1001105323			.			.	
		0160037722 - 0160040659	1001110401
		0160040678 - Present	1001130739
	G9-43A	Prior To 0160037671	1001105325			.			.	
		0160037671 - 0160040674, excl 0160040468 & 0160040672	1001110402
		0160040675 - Present, incl 0160040468 & 0160040672	1001130708
	G10-43A	Prior To 0160037671	1001130935			.			.	
		0160037671 - 0160040674, excl 0160040468 & 0160040672	1001115257
		0160040675 - Present, incl 0160040468 & 0160040672	1001130844
	G10-55A	Prior To 0160037689	1001105707			.			.	
		0160037690 - Present, incl 0160038505, 0160038507, 0160038324, 0160038489 & 0160038493	1001115138				.	.		.
	G12-55A	Prior To 0160037689	1001105326			.			.	
		0160037689 - Present	1001115540					.		
	TF6-42	ALL	Consult Factory			.			.	

NOTES:

- Use only JLG approved attachments with proper material handler model/attachment load capacity charts displayed in the operator's cab.
 - Never use your attachment as a work platform or personnel carrier.
- Can't find the attachment you are looking for? Contact your JLG Aftermarket Parts representative at 1-877-JLG-LIFT or visit www.jlg.com.

ATTACHMENTS

Non-Current Production - Truss Boom, Gradall Available Through JLG Aftermarket Parts

LENGTH			10 ft.	10 ft.	12 ft.	12 ft.	15 ft.	15 ft.
WINCH			No	No	No	Yes	No	No
CAPACITY			2000 lbs.	2000 lbs.	2000 lbs.	2000 lbs.	2000 lbs.	2000 lbs.
PART NO.			90455011	91405083	1001099902S	1001099351	91405082	1001099901S
MODEL	SN BREAKS	LOAD CHART BOOKLET						
GRADALL	G6-42P	Prior To 0160037689	1001105324	.			.	
		0160037689 - Present	1001110405		.	.		.
	522D/524D	ALL	Consult Factory	.				
	534D-6	ALL	Consult Factory	.				
	534D-9	Prior To 0160037689	1001102720	.				
		0160037689 - Present	1001110406		.	.		.
	534D-10	Prior To 0160037689	1001102721	.				
		0160037689 - Present	1001110407		.	.		.
	544D	Prior To 0160037689	1001102721	.				
		0160037689 - Present	1001110408		.	.		.
	534C-10	ALL	Consult Factory	.				
	544C	ALL	Consult Factory	.				

Non-Current Production - Truss Boom, SkyTrak Legacy Available Through JLG Aftermarket Parts

LENGTH			3 ft.	12 ft.	12 ft.	15 ft.	15 ft.	
WINCH			Yes	No	Yes	No	No	
CAPACITY			4000 lbs.	2000 lbs.	2000 lbs.	2000 lbs.	2000 lbs.	
PART NO.			7139608S	1001099902S	1001099351	7119800	1001099901S	
MODEL	SN BREAKS	LOAD CHART BOOKLET						
SKYTRAK LEGACY	6036	Prior To 0160031200	Consult Factory	.				
		0160031200 - 016009719, excl 0160065792, 0160065798, 0160065824, 0160069383 & 0160069411	1001199500		.	.		.
	6042	Prior To 0160031200	Consult Factory	.				
		0160031200 - 016009719, excl 0160065792, 0160065798, 0160065824, 0160069383 & 0160069411	1001199504		.	.		.
	8042	Prior To 0160031235	Consult Factory	.				
		0160031235 - 0160069721, excl 0160065791, 0160065796, 0160065825, 0160065826, 0160069336, 0160069359 & 0160069441	1001199508		.	.		.
	10042	Prior To 0160031425	Consult Factory	.			.	
		0160031425 - 0160069721, excl 0160065791, 0160065796, 0160065825, 0160065826, 0160069336, 0160069359 & 0160069441	1001199512		.	.		.
	10054	Prior To 0160031255	Consult Factory	.			.	
		0160031255 - 0160069721, excl 0160065791, 0160065796, 0160065825, 0160065826, 0160069336, 0160069359 & 0160069441	1001199518		.	.		.
	4266	ALL	Consult Factory	.				
	4270	ALL	Consult Factory	.				
	4290	ALL	Consult Factory	.				
	5028	ALL	Consult Factory	.				

NOTES:

- Use only JLG approved attachments with proper material handler model/attachment load capacity charts displayed in the operator's cab.
 - Never use your attachment as a work platform or personnel carrier.
- Can't find the attachment you are looking for? Contact your JLG Aftermarket Parts representative at 1-877-JLG-LIFT or visit www.jlg.com.

Non-Current Production - Truss Boom, Lull
Available Through JLG Aftermarket Parts

LENGTH			3 ft.	10 ft.	10 ft.	10 ft.	10 ft.	10 ft.	12 ft.	12 ft.	15 ft.
WINCH			Yes	No	No	Yes	Yes	No	Yes	No	
CAPACITY			4000 lbs.	2000 lbs.	2000 lbs.	2000 lbs.	2000 lbs.	2000 lbs.	2000 lbs.	2000 lbs.	2000 lbs.
PART NO.			7139608S	7301178S	10338932	7301179	10338933	1001099902S	1001099351	1001099901S	
MODEL	SN BREAKS	LOAD CHART BOOKLET									
LULL	644E-42	Prior To 0160031500	7300628	.	.		.				
		0160037900 - Present	1001110410					.	.	.	
	944E-42	Prior To 0160031500	7301586	.	.		.				
		0160037794 - Present, incl 0160045421	1001110411					.	.	.	
	1044C-54 SII	Prior To 0160037893	1001105327			.		.			
		0160037794 - Present	1001110409					.	.	.	
	644B-37	ALL	Consult Factory			.		.			
	644B-42	ALL	Consult Factory			.		.			
	844C-42	ALL	Consult Factory			.		.			
	6K-37	ALL	Consult Factory			.		.			
	6K-42	ALL	Consult Factory			.		.			
	8K-42	ALL	Consult Factory			.		.			
10K-42/10K-54	ALL	Consult Factory			.		.				
644D-34	ALL	Consult Factory			.		.				

NOTES:

- Use only JLG approved attachments with proper material handler model/attachment load capacity charts displayed in the operator's cab.
 - Never use your attachment as a work platform or personnel carrier.
- Can't find the attachment you are looking for? Contact your JLG Aftermarket Parts representative at 1-877-JLG-LIFT or visit www.jlg.com.

Universal Skid Steer Adapter

Increase your JLG compact telehandler machine's versatility with the universal skid steer adapter. The adapter can be placed over the standard JLG attachment coupler assembly to allow for use of many skid steer coupling style attachments.

Features

- Not designed for load bearing attachments, lifting or placement of materials
- Ideal for sweeper and trencher attachments

Non-Current Production - Universal Skid Steer Adapter
Available Through JLG Aftermarket Parts

PART NO.		1001102332	
MODEL	SN BREAKS		
JLG	G5-18A	Quick coupler (hydraulic or manual)	•
		Universal (skid steer) quick coupler Prior To 0160040809	•
	G5-19A	ALL	•
	G6-23A	ALL	•
	619A	ALL	•
	723A	ALL	•



NOTES:

- Reduces capacity of machine, rated at 3,750 capacity. Please refer to load chart.
- For compatibility or attachment usage information, contact your JLG Representative or the Parts Contact Center.

ACCESSORY

Quick Coupling Assembly

The quick coupling assembly is a skid steer coupling that replaces the standard JLG style coupler.

Features

- Heavy duty
- Optimizes machine versatility
- Expands attachment options

Non-Current Production - Quick Coupling Assembly
Available Through JLG Aftermarket Parts

PART NO.		100117498	
MODEL	SN BREAKS		
JLG	G5-18A	ALL	•



NOTE: When coupling is installed, JLG coupling style attachments cannot be utilized.

NOTES:

- Use only JLG approved attachments with proper material handler model/attachment load capacity charts displayed in the operator's cab.
 - Never use your attachment as a work platform or personnel carrier.
- Can't find the attachment you are looking for? Contact your JLG Aftermarket Parts representative at 1-877-JLG-LIFT or visit www.jlg.com.

Forks

There are three main fork types available: the pallet fork, the cubing fork and the lumber fork.



Pallet Forks

- handle palletized material and other loads that require transportation and placement



Cubing Forks

- smaller width
- used to load, unload and place cubes of brick and block



Lumber Forks

- wider width
- ideal for separating stacks of lumber

Current Production - Forks, JLG

Available Through JLG Aftermarket Or With New Machine Orders

TYPE		Pallet				Cubing	Lumber			Dual Taper
CAPACITY PER FORKAT 24 IN. LOAD CENTER		5475 lbs.	5650 lbs.	6850 lbs.	7500 lbs.	1940 lbs.	3650 lbs.	6850 lbs.	8150 lbs.	7500 lbs.
FORK DIMENSIONS		2.25"x4"x48"	2.25"x6"x72"	2.25"x5"x48"	2.36"x6"x48"	2"x2"x48"	1.5"x6"x60"	2"x7"x60"	2.25"x6"x60"	2.36"x6"x72"
EYE DIAMETER		2.25"	2.25"	2.25"	2.31"	2.25"	2.25"	2.25"	2.25"	2.31"
FORK DROP		24"	24"	24"	24"	24"	24"	24"	24"	24"
PART NO.		2340045	1001092391	2340038	1001193801	2340037	1001099457	1001097110	2340039	1001193802
JLG	642	•	•	•		•	•	•	•	
	943	•	•	•		•	•	•	•	
	1043	•	•	•		•	•	•	•	
	1055	•	•	•		•	•	•	•	
	1255		•	•		•	•	•	•	
	G15-44A				•				•	•

Current Production - Forks, SkyTrak

Available Through JLG Aftermarket Or With New Machine Orders

TYPE		Pallet			Cubing	Lumber	
CAPACITY PER FORKAT 24 IN. LOAD CENTER		5475 lbs.	5650 lbs.	6850 lbs.	1940 lbs.	5400 lbs.	8150 lbs.
FORK DIMENSIONS		2.25"x4"x48"	2.25"x6"x72"	2.25"x5"x48"	2"x2"x48"	1.75"x7"x60"	2.25"x6"x60"
EYE DIAMETER		2.25"	2.25"	2.25"	2.25"	2.25"	2.25"
FORK DROP		24"	24"	24"	24"	24"	24"
PART NO.		2340045	1001092391	2340038	2340037	2340046	2340039
SKYTRAK 14F	6036 0160069720 - Present, incl 0160065792, 0160065798, 0160065824, 0160069383 & 0160069411	•	•	•	•	•	•
	6042 0160069720 - Present, incl 0160065792, 0160065798, 0160065824, 0160069383 & 0160069411	•	•	•	•	•	•
	8042 0160069722 - Present, incl 0160065791, 0160065796, 0160065825, 0160065826, 0160069336, 0160069359 & 0160069441	•	•	•	•	•	•
	10042 0160069722 - Present, incl 0160065791, 0160065796, 0160065825, 0160065826, 0160069336, 0160069359 & 0160069441	•	•	•	•	•	•
	10054 0160069722 - Present, incl 0160065791, 0160065796, 0160065825, 0160065826, 0160069336, 0160069359 & 0160069441	•	•	•	•	•	•

NOTES:

- Use only JLG approved attachments with proper material handler model/attachment load capacity charts displayed in the operator's cab.
- Forks rated less than the attachment and/or machine capacity decrease the capacity of the attachment and machine to that of the forks.
- Forks rated more than the attachment and/or machine capacity do not increase the attachment or machine capacity.
- Never use your attachment as a work platform or personnel carrier.

Can't find the attachment you are looking for? Contact your JLG Aftermarket Parts representative at 1-877-JLG-LIFT or visit www.jlg.com.

NON-CURRENT JLG FORKS

Non-Current Production - Pallet Forks, JLG Available Through JLG Aftermarket Parts

TYPE		Pallet						
CAPACITY PER FORK AT 24 IN. LOAD CENTER		3800 lb	4409 lbs. (rated at 20" load center)	4409 lbs. (rated at 20" load center)	5475 lbs.	5475 lbs.	5650 lbs.	5650 lbs.
FORK DIMENSIONS		2"x4"x48"	1.75"x5"x48"	2"x4"x48"	2.25"x4"x48"	2.25"x4"x48"	2"x6"x60"	2.25"x6"x72"
EYE DIAMETER		2.25"	2.375"	2.375"	2.25"	2.25"	2.25"	2.25"
FORK DROP		24"	28"	28"	20"	24"	25.5"	24"
PART NO.		1001099458	2340029	2340030	91513206	2340045	91403580	1001092391
JLG	619A	ALL	.					
	723A	ALL	.					
	G5-18A	ALL	.					
	G5-19A	ALL	.	.				
	G6-23A	ALL	.	.				
	G6-42A	Prior To 0160037722		
	G6-42A	0160037722 - Present				.		.
	G9-43A	Prior To 0160037671		
	G9-43A	0160037671 - Present				.		.
	G10-43A	ALL				.		.
	G10-55A	Prior To 0160037689		
	G10-55A	0160037689 - Present				.		.
	G12-55A	Prior To 0160037689		
	G12-55A	0160037689 - Present				.		.
	TF6-42	ALL		

Pallet options continue below

Non-Current Production - Pallet Forks, JLG Available Through JLG Aftermarket Parts

TYPE		Pallet			Pallet (Sold as Set)			Pallet (Fork Positioning Carriage Only)
CAPACITY PER FORK AT 24 IN. LOAD CENTER		6850 lbs.	6850 lbs.	8150 lbs.	4409 lbs. (rated at 20" load center)	4409 lbs. (rated at 20" load center)	4409 lbs.	5000 lbs.
FORK DIMENSIONS		2.25"x5"x48"	2.25"x5"x48"	2.25"x6"x60"	2"x4"x48"	2"x5"x48"	2.25"x4"x48"	2.25"x4"x48"
EYE DIAMETER		2.25"	2.25"	2.25"	2.375"	2.375"	2.375"	2"
FORK DROP		20"	24"	20"	21.5"	21.5"	21.5"	24"
PART NO.		91563141	2340038	91563142	2340041	1001117945	1001107586	7301408
JLG	619A	ALL						
	723A	ALL						
	G5-18A	ALL						
	G5-19A	ALL			.	.	.	
	G6-23A	ALL			.	.	.	
	G6-42A	Prior To 0160037722	.	.	.			
	G6-42A	0160037722 - Present		.				.
	G9-43A	Prior To 0160037671
	G9-43A	0160037671 - Present		.				.
	G10-43A	ALL		.				.
	G10-55A	Prior To 0160037689
	G10-55A	0160037689 - Present		.				.
	G12-55A	Prior To 0160037689
	G12-55A	0160037689 - Present		.				.
	TF6-42	ALL

NOTES:

- Use only JLG approved attachments with proper material handler model/attachment load capacity charts displayed in the operator's cab.
 - Forks rated less than the attachment and/or machine capacity decrease the capacity of the attachment and machine to that of the forks.
 - Forks rated more than the attachment and/or machine capacity do not increase the attachment or machine capacity.
 - Never use your attachment as a work platform or personnel carrier.
- Can't find the attachment you are looking for? Contact your JLG Aftermarket Parts representative at 1-877-JLG-LIFT or visit www.jlg.com.

Non-Current Production - Cubing and Drywall Forks, JLG

Available Through JLG Aftermarket Parts

TYPE		Cubing		Cubing (Sold as Set)	Drywall
CAPACITY PER FORK AT 24 IN. LOAD CENTER		1940 lbs.	1940 lbs.	1940 lbs.	2500 lbs.
FORK DIMENSIONS		2"x2"x48"	2"x2"x48"	2"x2"x48"	1.75"x4"x48"
EYE DIAMETER		2.25"	2.25"	2.375"	2.25"
FORK DROP		20"	24"	21.5"	29"
PART NO.		91403359	2340037	10010979225	91403366
JLG	619A	ALL	•		
	723A	ALL	•		
	G5-18A	ALL	•		
	G5-19A	ALL		•	
	G6-23A	ALL		•	
	G6-42A	Prior To 0160037722	•	•	•
	G6-42A	0160037722 - Present		•	
	G9-43A	Prior To 0160037671	•	•	•
	G9-43A	0160037671 - Present		•	
	G10-43A	ALL		•	
	G10-55A	Prior To 0160037689	•	•	•
	G10-55A	0160037689 - Present		•	
	G12-55A	Prior To 0160037689	•	•	•
	G12-55A	0160037689 - Present		•	
	TF6-42	ALL	•	•	•

Non-Current Production - Lumber Forks, JLG

Available Through JLG Aftermarket Parts

TYPE		Lumber						
CAPACITY PER FORK AT 24 IN. LOAD CENTER		3050 lbs.	3650 lbs.	5000 lbs.	5400 lbs.	5650 lbs.	8150 lbs.	8150 lbs.
FORK DIMENSIONS		1.75"x4"x48"	1.5"x6"x60"	2"x6"x72"	1.75"x7"x60"	2"x6"x60"	2.25"x6"x60"	2.25"x6"x72"
EYE DIAMETER		2.25"	2.2"	2"	2.25"	2"	2.25"	2.25"
FORK DROP		25.5"	24"	20"	24"	20"	24"	20"
PART NO.		91403364	1001099457	91123132	2340046	91163269	2340039	91563143
JLG	619A	ALL	•					
	723A	ALL	•					
	G5-18A	ALL	•					
	G5-19A	ALL						
	G6-23A	ALL						
	G6-42A	Prior To 0160037722	•		•		•	•
	G6-42A	0160037722 - Present			•		•	
	G9-43A	Prior To 0160037671	•		•		•	•
	G9-43A	0160037671 - Present			•		•	
	G10-43A	ALL			•		•	
	G10-55A	Prior To 0160037689	•		•		•	•
	G10-55A	0160037689 - Present			•		•	
	G12-55A	Prior To 0160037689	•		•		•	•
	G12-55A	0160037689 - Present			•		•	
	TF6-42	ALL	•		•		•	

NOTES:

- Use only JLG approved attachments with proper material handler model/attachment load capacity charts displayed in the operator's cab.
 - Forks rated less than the attachment and/or machine capacity decrease the capacity of the attachment and machine to that of the forks.
 - Forks rated more than the attachment and/or machine capacity do not increase the attachment or machine capacity.
 - Never use your attachment as a work platform or personnel carrier.
- Can't find the attachment you are looking for? Contact your JLG Aftermarket Parts representative at 1-877-JLG-LIFT or visit www.jlg.com.

NON-CURRENT GRADALL FORKS

Non-Current Production - Pallet Forks, Gradall

Available Through JLG Aftermarket Parts

TYPE			Pallet							
CAPACITY PER FORK AT 24 IN. LOAD CENTER			3750 lbs. (rated at 48" load center)	4000 lbs.	4500 lbs.	5000 lbs.	5000 lbs.	5000 lbs.	5475 lbs.	5475 lbs.
FORK DIMENSIONS			2"x6"x96"	2"x4"x48"	1.75"x6"x48"	2"x6"x48"	2"x6"x60"	2"x6"x72"	2.25"x4"x48"	2.25"x4"x48"
EYE DIAMETER			2"	2"	2"	2"	2"	2"	2"	2.25"
FORK DROP			20"	20"	20"	20"	20"	20"	20.5"	20"
PART NO.			H0453002	90453002	90601819	90553005	90601015	90553018	90453048	91513206
GRADALL	G6-42P	Prior To 0160037689								
	G6-42P	0160037689 - Present								
	522D/524D	ALL		•	•	•	•	•	•	
	534D-6	ALL		•	•	•	•	•	•	
	534D-9	Prior To 0160037689	•	•	•	•	•	•	•	
	534D-9	0160037689 - Present								
	534D-10	Prior To 0160037689	•	•	•	•	•	•	•	
	534D-10	0160037689 - Present								
	544D	Prior To 0160037689	•	•	•	•	•	•	•	
	544D	0160037689 - Present								
	534C-9	ALL	•	•	•	•	•	•	•	
	534C-10	ALL		•	•	•	•	•	•	
	544C	ALL		•	•	•	•	•	•	

Pallet options continue below

Non-Current Production - Pallet Forks, Gradall

Available Through JLG Aftermarket Parts

TYPE			Pallet				Pallet (Swing Mast Carriage Only)			
CAPACITY PER FORK AT 24 IN. LOAD CENTER			5475 lbs.	5650 lbs.	5650 lbs.	6850 lbs.	6850 lbs.	8150 lbs.	2500 lbs.	5650 lbs.
FORK DIMENSIONS			2.25"x4"x48"	2"x6"x60"	2.25"x6"x72"	2.25"x5"x48"	2.25"x5"x48"	2.25"x6"x60"	1.75"x4"x48"	2"x6"x60"
EYE DIAMETER			2.25"	2.25"	2.25"	2.25"	2.25"	2.25"	2"	2"
FORK DROP			24"	25.5"	24"	20"	24"	20"	25.5"	25.5"
PART NO.			2340045	91403580	1001092391	91563141	2340038	91563142	90553008	90453045
GRADALL	G6-42P	Prior To 0160037689	•	•	•	•	•	•		
	G6-42P	0160037689 - Present	•		•		•			
	522D/524D	ALL								
	534D-6	ALL							•	•
	534D-9	Prior To 0160037689	•		•		•		•	•
	534D-9	0160037689 - Present	•		•		•			
	534D-10	Prior To 0160037689	•		•		•		•	•
	534D-10	0160037689 - Present	•		•		•			
	544D	Prior To 0160037689	•		•		•		•	•
	544D	0160037689 - Present	•		•		•			
	534C-9	ALL							•	•
	534C-10	ALL							•	•
	544C	ALL							•	•

NOTES:

- Use only JLG approved attachments with proper material handler model/attachment load capacity charts displayed in the operator's cab.
 - Never use your attachment as a work platform or personnel carrier.
- Can't find the attachment you are looking for? Contact your JLG Aftermarket Parts representative at 1-877-JLG-LIFT or visit www.jlg.com.

Non-Current Production - Cubing and Drywall Forks, Gradall

Available Through JLG Aftermarket Parts

TYPE			Cubing			Drywall	
CAPACITY PER FORK AT 24 IN. LOAD CENTER			1500 lbs.	1940 lbs.	1940 lbs.	2500 lbs.	2500 lbs.
FORK DIMENSIONS			2"x2"x48"	2"x2"x48"	2"x2"x48"	1.75"x4"x48"	1.75"x4"x48"
EYE DIAMETER			2"	2.25"	2.25"	2"	2.25"
FORK DROP			20"	20"	24"	29"	29"
PART NO.			90600390	91403359	2340037	90453013	91403366
GRADALL	G6-42P	Prior To 0160037689		•	•		•
	G6-42P	0160037689 - Present			•		
	522D/524D	ALL	•			•	
	534D-6	ALL	•			•	
	534D-9	Prior To 0160037689	•		•	•	
	534D-9	0160037689 - Present			•		
	534D-10	Prior To 0160037689	•		•	•	
	534D-10	0160037689 - Present			•		
	544D	Prior To 0160037689	•		•	•	
	544D	0160037689 - Present			•		
	534C-9	ALL	•			•	
	534C-10	ALL	•			•	
	544C	ALL	•			•	

Non-Current Production - Lumber Forks, Gradall

Available Through JLG Aftermarket Parts

TYPE			Lumber					
CAPACITY PER FORK AT 24 IN. LOAD CENTER			3050 lbs.	5000 lbs.	5400 lbs.	5650 lbs.	8150 lbs.	8150 lbs.
FORK DIMENSIONS			1.75"x4"x48"	2"x6"x72"	1.75"x7"x60"	2"x6"x60"	2.25"x6"x60"	2.25"x6"x72"
EYE DIAMETER			2.25"	2"	2.25"	2"	2.25"	2.25"
FORK DROP			25.5"	20"	24"	20"	24"	20"
PART NO.			91403364	91123132	2340046	91163269	2340039	91563143
GRADALL	G6-42P	Prior To 0160037689	•		•		•	•
	G6-42P	0160037689 - Present			•		•	
	522D/524D	ALL		•		•		
	534D-6	ALL		•		•		
	534D-9	Prior To 0160037689		•	•	•	•	
	534D-9	0160037689 - Present			•		•	
	534D-10	Prior To 0160037689		•	•	•	•	
	534D-10	0160037689 - Present			•		•	
	544D	Prior To 0160037689		•	•	•	•	
	544D	0160037689 - Present			•		•	
	534C-9	ALL		•		•		
	534C-10	ALL		•		•		
	544C	ALL		•		•		

NOTES:

- Use only JLG approved attachments with proper material handler model/attachment load capacity charts displayed in the operator's cab.
- Never use your attachment as a work platform or personnel carrier.
- Can't find the attachment you are looking for? Contact your JLG Aftermarket Parts representative at 1-877-JLG-LIFT or visit www.jlg.com.

NON-CURRENT SKYTRAK FORKS

Non-Current Production - Pallet Forks, SkyTrak
Available Through JLG Aftermarket Parts

TYPE			Pallet						
CAPACITY PER FORK AT 24 IN. LOAD CENTER			3000 lbs.	4000 lbs.	5000 lbs.	5060 lbs.	5475 lbs.	5600 lbs.	6850 lbs.
FORK DIMENSIONS			1.75"x4"x48"	2"x4"x48"	2"x4"x48"	2"x5"x72"	2.25"x4"x48"	2.25"x6"x72"	2.25"x5"x48"
EYE DIAMETER			2"	2"	2"	2"	2.25"	2.25"	2.25"
FORK DROP			22"	24"	24"	24"	24"	24"	24"
PART NO.			7048233	7097523	7301408	2340042	2340045	1001092391	2340038
SKYTRAK	6036	Prior To 0160031200
	6036	0160031200 - 016009719, excl 0160065792, 0160065798, 0160065824, 0160069383 & 0160069411		
	6042	Prior To 0160031200	
	6042	0160031200 - 016009719, excl 0160065792, 0160065798, 0160065824, 0160069383 & 0160069411		
	8042	Prior To 0160031235	
	8042	0160031235 - 0160069721, excl 0160065791, 0160065796, 0160065825, 0160065826, 0160069336, 0160069359 & 0160069441		
	10042	Prior To 0160031425	
	10042	0160031425 - 0160069721, excl 0160065791, 0160065796, 0160065825, 0160065826, 0160069336, 0160069359 & 0160069441		
	10054	Prior To 0160031255	
	10054	To 0160031255 - 0160069721, excl 0160065791, 0160065796, 0160065825, 0160065826, 0160069336, 0160069359 & 0160069441		
	4266	ALL		.					
	4270	ALL		.					
	4290	ALL			.				

NOTES:

- Use only JLG approved attachments with proper material handler model/attachment load capacity charts displayed in the operator's cab.
 - Forks rated less than the attachment and/or machine capacity decrease the capacity of the attachment and machine to that of the forks.
 - Forks rated more than the attachment and/or machine capacity do not increase the attachment or machine capacity.
 - Never use your attachment as a work platform or personnel carrier.
- Can't find the attachment you are looking for? Contact your JLG Aftermarket Parts representative at 1-877-JLG-LIFT or visit www.jlg.com.

Non-Current Production - Cubing, Drywall and Lumber Forks, SkyTrak
Available Through JLG Aftermarket Parts

TYPE		Cubing		Drywall	Lumber				
CAPACITY PER FORK AT 24 IN. LOAD CENTER		1940 lbs.	2000 lbs.	5000 lbs.	3000 lbs.	5400 lbs.	5650 lbs.	6000 lbs.	8150 lbs.
FORK DIMENSIONS		2"x2"x48"	2"x2"x48"	1.75"x7"x48"	1.75"x5"x60"	1.75"x7"x60"	2"x6"x60"	1.75"x7"x60"	2.25"x6"x60"
EYE DIAMETER		2.25"	2"	2"	2"	2.25"	2"	2"	2.25"
FORK DROP		24"	22"	24"	24"	24"	24"	24"	24"
PART NO.		2340037	7139747	7130453	7092793	2340046	2340036	7139746	2340039
SKYTRAK	6036	Prior To 0160031200
	6036	0160031200 - 016009719, excl 0160065792, 0160065798, 0160065824, 0160069383 & 0160069411
	6042	Prior To 0160031200
	6042	0160031200 - 016009719, excl 0160065792, 0160065798, 0160065824, 0160069383 & 0160069411
	8042	Prior To 0160031235
	8042	0160031235 - 0160069721, excl 0160065791, 0160065796, 0160065825, 0160065826, 0160069336, 0160069359 & 0160069441
	10042	Prior To 0160031425
	10042	0160031425 - 0160069721, excl 0160065791, 0160065796, 0160065825, 0160065826, 0160069336, 0160069359 & 0160069441
	10054	Prior To 0160031255
	10054	0160031255 - 0160069721, excl 0160065791, 0160065796, 0160065825, 0160065826, 0160069336, 0160069359 & 0160069441
	4266	ALL
	4270	ALL
	4290	ALL

NOTES:

- Use only JLG approved attachments with proper material handler model/attachment load capacity charts displayed in the operator's cab.
 - Forks rated less than the attachment and/or machine capacity decrease the capacity of the attachment and machine to that of the forks.
 - Forks rated more than the attachment and/or machine capacity do not increase the attachment or machine capacity.
 - Never use your attachment as a work platform or personnel carrier.
- Can't find the attachment you are looking for? Contact your JLG Aftermarket Parts representative at 1-877-JLG-LIFT or visit www.jlg.com.

NON-CURRENT LULL FORKS

Non-Current Production - Pallet Forks, Lull

Available Through JLG Aftermarket Parts

TYPE		Pallet								
CAPACITY PER FORK AT 24 IN. LOAD CENTER		4000 lbs.	4000 lbs.	4000 lbs.	5000 lbs.	5000 lbs.	5000 lbs.	5000 lbs.	5000 lbs.	5000 lbs.
FORK DIMENSIONS		2"x4"x42"	2"x4"x48"	2"x4"x60"	2"x4"x48"	2"x5"x42"	2"x5"x48"	2"x5"x60"	2.25"x4"x42"	2.25"x4"x60"
EYE DIAMETER		1.875"	1.875"	1.875"	2"	2"	2"	2"	2"	2"
FORK DROP		25"	27"	25"	24"	25"	27"	27"	25"	25"
PART NO.		10238026	1001099850	10238117	7301408	10238568	1001099846	1001099848	10239893	10239895
LULL	644E-42	Prior To 0160037794			•					
	644E-42	0160037794 - Present			•					
	944E-42	Prior To 0160037794			•					
	644E-42	0160037794 - Present			•					
	1044C-54 SII	Prior To 0160037893	•				•	•	•	
	1044C-54 SII	0160037893 - Present				•				
	644B-37	ALL	•	•	•					
	644B-42	ALL	•	•	•					
	844C-42	ALL	•	•	•					
	1044C-42/1044C-54	ALL					•	•	•	•
	6K-37	ALL	•	•	•					
	6K-42	ALL	•	•	•					
	8K-42	ALL	•	•	•					
	10K-42/10K-54	ALL					•	•	•	•
644D-34	ALL	•	•	•						

Pallet options continue below

Non-Current Production - Pallet Forks, Lull

Available Through JLG Aftermarket Parts

TYPE		Pallet				Pallet (Swing Carriage Only)		Pallet (Fork Positioning Carriage Only)		
CAPACITY PER FORK AT 24 IN. LOAD CENTER		5000 lbs.	5475 lbs.	5600 lbs.	6850 lbs.	5000 lbs.	5060 lbs.	4000 lbs	4000 lbs	5000 lbs
FORK DIMENSIONS		2.25"x4"x48"	2.25"x4"x48"	2.25"x6"x72"	2.25"x5"x48"	2"x5"x60"	2"x5"x48"	2"x4"x42"	2"x4"x48"	2"x5"x42"
EYE DIAMETER		2"	2.25"	2.25"	2.25"	2.25"	2.25"	2.75"	2.75"	2.75"
FORK DROP		27"	24"	24"	24"	22"	22"	25"	25"	25"
PART NO.		1001099847	2340045	1001092391	2340038	10239970	2340048	10338502 (LH) 10338503 (RH)	10339345 (LH) 10339346 (RH)	10365687 (LH) 10365686 (RH)
LULL	644E-42	Prior To 0160037794	•		•					
	644E-42	0160037794 - Present	•	•	•					
	944E-42	Prior To 0160037794	•		•					
	644E-42	0160037794 - Present	•	•	•					
	1044C-54 SII	Prior To 0160037893	•			•	•			•
	1044C-54 SII	0160037893 - Present		•	•	•				
	644B-37	ALL						•	•	
	644B-42	ALL						•	•	
	844C-42	ALL						•	•	
	1044C-42/1044C-54	ALL	•							•
	6K-37	ALL						•	•	
	6K-42	ALL						•	•	
	8K-42	ALL						•	•	
	10K-42/10K-54	ALL	•							
644D-34	ALL									

NOTES:

- Use only JLG approved attachments with proper material handler model/attachment load capacity charts displayed in the operator's cab.
 - Forks rated less than the attachment and/or machine capacity decrease the capacity of the attachment and machine to that of the forks.
 - Forks rated more than the attachment and/or machine capacity do not increase the attachment or machine capacity.
 - Never use your attachment as a work platform or personnel carrier.
- Can't find the attachment you are looking for? Contact your JLG Aftermarket Parts representative at 1-877-JLG-LIFT or visit www.jlg.com.

NON-CURRENT LULL FORKS

Non-Current Production - Cubing and Lumber Forks, Lull

Available Through JLG Aftermarket Parts

TYPE		Cubing				Lumber		
CAPACITY PER FORK AT 24 IN. LOAD CENTER		1940 lbs.	2000 lbs.	2000 lbs.	2000 lbs.	4000 lbs.	4000 lbs.	5000 lbs.
FORK DIMENSIONS		2"x2"x48"	2"x2"x48"	2"x2"x48"	2"x2"x48"	1.75"x6"x48"	1.75"x6"x60"	1.75"x7"x48"
EYE DIAMETER		2.25"	2"	2"	2"	1.875"	1.875"	2"
FORK DROP		24"	22"	25"	27"	25"	25"	25"
PART NO.		2340037	7139747	10238118	1001099845	10217103	10223610	10239094
LULL	644E-42	Prior To 0160037794	•	•				
	644E-42	0160037794 - Present	•					
	944E-42	Prior To 0160037794	•	•				
	644E-42	0160037794 - Present	•					
	1044C-54 SII	Prior To 0160037893			•	•		
	1044C-54 SII	0160037893 - Present	•					
	644B-37	ALL			•		•	
	644B-42	ALL			•		•	
	844C-42	ALL			•		•	
	1044C-42/1044C-54	ALL			•	•		•
	6K-37	ALL			•		•	
	6K-42	ALL			•		•	
	8K-42	ALL			•		•	
	10K-42/10K-54	ALL			•	•		•
644D-34	ALL			•		•		

Lumber options continue below

Non-Current Production - Lumber Forks, Lull

Available Through JLG Aftermarket Parts

TYPE		Lumber							Lumber (Swing Carriage Only)	
CAPACITY PER FORK AT 24 IN. LOAD CENTER		5000 lbs.	5000 lbs.	5000 lbs.	5400 lbs.	5650 lbs.	6000 lbs.	8150 lbs.	4000 lbs.	5000 lbs.
FORK DIMENSIONS		1.75"x7"x60"	2"x6"x48"	2"x6"x60"	1.75"x7"x60"	2"x6"x60"	1.75"x7"x60"	2.25"x6"x60"	1.75"x6"x48"	1.75"x7"x60"
EYE DIAMETER		2"	2"	2"	2.25"	2"	2"	2.25"	2.25"	2.25"
FORK DROP		27"	29.5"	29.5"	24"	24"	24"	24"	22"	22"
PART NO.		1001099849	10238181	10238182	2340046	2340036	7139746	2340039	10239954	10239969
LULL	644E-42	Prior To 0160037794				•	•	•		
	644E-42	0160037794 - Present			•			•		
	944E-42	Prior To 0160037794				•	•	•		
	644E-42	0160037794 - Present			•			•		
	1044C-54 SII	Prior To 0160037893	•						•	•
	1044C-54 SII	0160037893 - Present			•			•		
	644B-37	ALL								
	644B-42	ALL								
	844C-42	ALL								
	1044C-42/1044C-54	ALL	•	•	•					
	6K-37	ALL								
	6K-42	ALL								
	8K-42	ALL								
	10K-42/10K-54	ALL	•	•	•					
644D-34	ALL									

NOTES:

- Use only JLG approved attachments with proper material handler model/attachment load capacity charts displayed in the operator's cab.
 - Forks rated less than the attachment and/or machine capacity decrease the capacity of the attachment and machine to that of the forks.
 - Forks rated more than the attachment and/or machine capacity do not increase the attachment or machine capacity.
 - Never use your attachment as a work platform or personnel carrier.
- Can't find the attachment you are looking for? Contact your JLG Aftermarket Parts representative at 1-877-JLG-LIFT or visit www.jlg.com.

Fork Pins and Bars

Whether you call it a fork pin, fork bar or fork shaft, we can supply your JLG Telehandler with the size you need. Looking for a specific size? Please refer to the table below. If your size is not listed, or for compatibility questions, consult the JLG Parts Department prior to purchase.

Features

- Available in diameters from 1 7/8" to 2.36"
- Zinc Plated for durability



SIZE (in.)	PART NO.
1 7/8" x 53 3/4"	10138064
1 7/8" x 54.06"	10138499
1 7/8" x 76 1/4"	10116207
2 3/8" x 50 13/16"	7028136
2" x 51.12"	7128772
2" x 54 1/2"	90451058
2" x 54.06"	10165685
2" x 54.25"	10223049
2" x 55.38"	7128782
2" x 63.12"	7128792
2" x 71"	90402478
2" x 72 1/8"	91301083
2" x 76 1/2"	90551013
2" x 77.25"	10124495
2.25" x 12 3/4"	91401340
2.25" x 48.38"	70021339

SIZE (in.)	PART NO.
2.25" x 50.25"	70022105
2.25" x 52.44"	70022990
2.25" x 54 5/8"	91401303
2.25" x 55.125"	3423275
2.25" x 64.5" (non plated)	70011218
2.25" x 64.5" (plated)	70011215
2.25" x 74"	70011217
2.25" x 74" (non plated)	70011220
2.25" x 65.125"	3423242
2.25" x 69" (non plated)	70011219
2.25" x 69" (plated)	70011216
2.25" x 77.125"	3423276
2.25" x 78 5/8"	91401324
2.25" x 79"	70020027
2.36" x 24.69"	4040283
3" x 84"	70011759

NOTES:

- Use only JLG approved attachments with proper material handler model/attachment load capacity charts displayed in the operator's cab.
- Forks rated less than the attachment and/or machine capacity decrease the capacity of the attachment and machine to that of the forks.
- Forks rated more than the attachment and/or machine capacity do not increase the attachment or machine capacity.
- Never use your attachment as a work platform or personnel carrier.

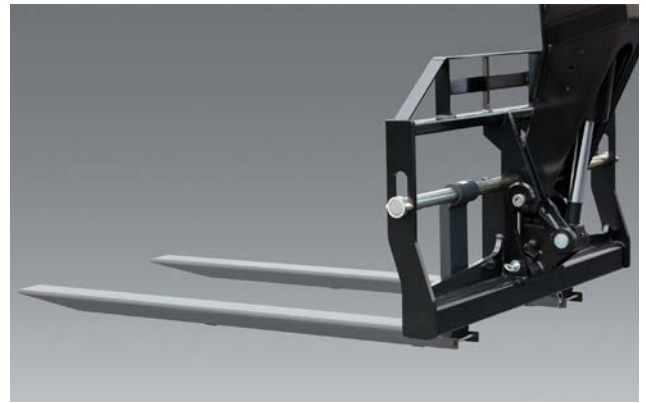
Can't find the attachment you are looking for? Contact your JLG Aftermarket Parts representative at 1-877-JLG-LIFT or visit www.jlg.com.

Fork Extensions

The fork extensions increase your machine's versatility on the jobsite.

Features

- Factory approved
- Designed specifically for JLG manufactured telehandlers
- Requires two per machine
- Requires fork part number 1001092391 or 2340039 for use



Current Production - Fork Extensions

Available Through JLG Aftermarket Or With New Machine Orders

CAPACITY		1717 lbs.	
APPROX. WEIGHT		1490 lbs.	
PART NO.		1001137512	
LENGTH		90"	
	MODEL	SN BREAKS	
JLG	642	Without Outriggers	•
		With Outriggers	•
	943/1043	Without Outriggers	•
		With Outriggers	•
	1055	Prior To 0160074169	•
		0160074169 - Present	•
	1255	Prior To 0160074168	•
		0160074168 - Present	•
	G15-44A	Prior To 0160074142	•
		0160074142 - Present	•
SKYTRAK T4F	6036	0160069720 - 0160075649, incl 0160065792, 0160065798, 0160065824, 0160069383, 0160069411, 0160075653 & 0160075722	•
		0160075650 - Present, excl 0160075653 & 0160075722	•
	6042	0160069720 - 0160075656, incl 0160065792, 0160065798, 0160065824, 0160069383 & 0160069411	•
		0160075657 - Present	•
	8042	0160069722 - 0160075670, incl 0160065791, 0160065796, 0160065825, 0160065826, 0160069336, 0160069359 & 0160069441	•
		0160075671 - Present	•
	10042	0160069722 - 0160075987, incl 0160065791, 0160065796, 0160065825, 0160065826, 0160069336, 0160069359 & 0160069441	•
		0160075988 - Present	•
	10054	0160069722 - 0160075682, incl 0160065791, 0160065796, 0160065825, 0160065826, 0160069336, 0160069359, 0160069441 & 0160075696	•
		0160075683 - Present, excl 0160075696	•

NOTES:

- Use only JLG approved attachments with proper material handler model/attachment load capacity charts displayed in the operator's cab.
- Never use your attachment as a work platform or personnel carrier.

Can't find the attachment you are looking for? Contact your JLG Aftermarket Parts representative at 1-877-JLG-LIFT or visit www.jlg.com.

FORK EXTENSIONS

Non-Current Production - Fork Extensions Available Through JLG Aftermarket Parts

CAPACITY		1717 lbs.		
APPROX. WEIGHT		1490 lbs.		
PART NO.		1001137512		
LENGTH		90"		
MODEL	SN BREAKS			
JLG	G6-42A	0160037722 - 0160040659	.	
		0160040678 - Present	.	
	G9-43A	0160037671 - 0160040674, excl 0160040468 & 0160040672	.	
		0160040675 - Present, incl 0160040468 & 0160040672	.	
	G10-43A	0160037671 - 0160040674, excl 0160040468 & 0160040672	.	
		0160040675 - Present, incl 0160040468 & 0160040672	.	
	G10-55A	0160037690 - 0160038486, incl 0160038505 & 0160038507, excl 0160038324, 0160038489 & 0160038493	.	
		0160038500 - Present, incl 0160038324, 0160038489 & 0160038493, excl 0160038505 & 0160038507	.	
	G12-55A	0160037689 - 0160038533	.	
		0160038538 - Present	.	
	SKYTRAK LEGACY	6036	0160031200 - 0160069719, excl 0160065792, 0160065798, 0160065824, 0160069383 & 0160069411	.
		6042	0160031200 - 0160069719, excl 0160065792, 0160065798, 0160065824, 0160069383 & 0160069411	.
8042		0160031235 - 0160069721, excl 0160065791, 0160065796, 0160065825, 0160065826, 0160069336, 0160069359 & 0160069441	.	
10042		0160031425 - 0160069721, excl 0160065791, 0160065796, 0160065825, 0160065826, 0160069336, 0160069359 & 0160069441	.	
10054		0160031255 - 0160069721, excl 0160065791, 0160065796, 0160065825, 0160065826, 0160069336, 0160069359 & 0160069441	.	
LULL	644E-42	0160037900 - Present	.	
	944E-42	0160037794 - Present, incl 0160045421	.	
	1044C-54 SII	0160037794 - Present	.	

NOTES:

- Use only JLG approved attachments with proper material handler model/attachment load capacity charts displayed in the operator's cab.
 - Never use your attachment as a work platform or personnel carrier.
- Can't find the attachment you are looking for? Contact your JLG Aftermarket Parts representative at 1-877-JLG-LIFT or visit www.jlg.com.

Fork Caliper

Worn out forks are unreliable and inefficient on the job site. A fork caliper can help you to identify fork wear before it becomes an issue.

If the inner jaws pass over the fork, wear is more than 10%. When wear is more than 10%, the fork must be removed from service and replaced. If the inner jaws hit the fork, wear is within the tolerance and the fork is approved for use.

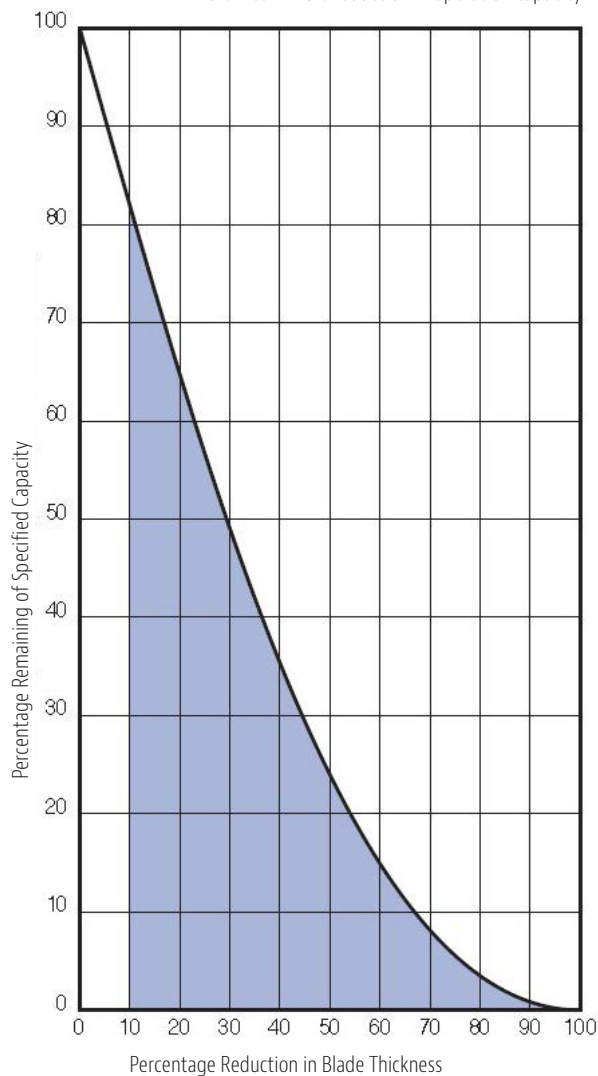
Features

- Pocket portable
- Easy to use on the job
- Measure the thickness of the fork arm shank



DESCRIPTION	PART NO.
Fork Inspection Safety Kit (Includes fork arm wear caliper guide, inspection log and caliper)	70011840
Caliper	7025304

10% wear = 20% reduction in operation capacity



This chart shows how fork wear reduces truck capacity. ANSI/ITSDF B56.1-2012 standards require that each fork be at least half the capacity of the truck at the rated load center distance as shown on the truck nameplate. Refer to ANSI website: www.itsdf.org/pB56.asp

NOTES:

- Use only JLG approved attachments with proper material handler model/attachment load capacity charts displayed in the operator's cab.
 - Never use your attachment as a work platform or personnel carrier.
- Can't find the attachment you are looking for? Contact your JLG Aftermarket Parts representative at 1-877-JLG-LIFT or visit www.jlg.com.

JLG Industries, Inc.
1 JLG Drive
McConnellsburg, PA 17233-9533
Telephone 717-485-5161
Toll-free in US 877-JLG-LIFT
Fax 717-485-6417
www.jlg.com
An Oshkosh Corporation Company

Part No. 401013
RT116
Printed in USA

