



# *Illustrated Parts Manual* *Manuel de pièces détachées*

**MODEL / MODELE**

**TOUCAN DUO**

S/N A130020916 TO PRESENT  
and A130020818+821+823+825+827

**31210257**

October 16, 2017



---

An Oshkosh Corporation Company



**Original issue** \_\_\_\_\_ **October 16, 2017** \_\_\_\_\_ **0010724\_F**



# TABLE OF CONTENTS

SECTION 1 - COVERS INSTALL / INSTALLATION CAPOTS .....	7
FIGURE 1-1. COVERS INSTALL / INSTALLATION CAPOTS .....	8
SECTION 2 - FRAME INSTALL / INSTALLATION CHASSIS .....	11
FIGURE 2-1. FRAME INSTALL / INSTALLATION CHASSIS .....	12
SECTION 3 - MASTS INSTALL / INSTALLATION MATS .....	17
FIGURE 3-1. MASTS INSTALL / INSTALLATION MATS .....	18
FIGURE 3-2. MAST CYLINDER / VERIN DE MAT .....	26
FIGURE 3-3. CABLES ON MASTS INSTALL / INSTALLATION CABLES SUR MATS .....	28
SECTION 4 - PLATFORM AND TRAY INSTALL / INSTALLATION PLATE-FORME ET TABLETTE .....	31
FIGURE 4-1. PLATFORM INSTALL / INSTALLATION PLATE-FORME .....	32
FIGURE 4-2. TRAY INSTALL / INSTALLATION TABLETTE .....	34
SECTION 5 - HYDRAULIC INSTALL / INSTALLATION HYDRAULIQUE .....	37
FIGURE 5-1. HYDRAULIC INSTALL / INSTALLATION HYDRAULIQUE .....	38
FIGURE 5-2. COMPLETE POWER-UNIT 1.25CC / CENTRALE COMPLETE 1.25CC .....	40
SECTION 6 - ELECTRICAL INSTALL / INSTALLATION ELECTRIQUE .....	43
FIGURE 6-1. CABLES INSTALL / INSTALLATION CABLES .....	44
FIGURE 6-2. KIT POWER CABLES / KIT CABLES DE PUISSANCE .....	48
FIGURE 6-3. MTB INSTALL / INSTALLATION BOITIER BAS .....	50
FIGURE 6-4. GROUND CONTROLS / BOITIER BAS .....	52
FIGURE 6-5. PLATFORM CONTROLS / INSTALLATION COMMANDES HAUTES .....	54
FIGURE 6-6. UPPER CONTROL BOX / BOITIER HAUT .....	56
FIGURE 6-7. TRAY BOX / BOITIER TABLETTE .....	58
FIGURE 6-8. BATTERIES INSTALL / INSTALLATION BATTERIES .....	60
FIGURE 6-9. CHARGER INSTALL / INSTALLATION CHARGEUR .....	62
FIGURE 6-10. CHARGER CONNECTORS / CONNECTEURS CHARGEUR .....	64
FIGURE 6-11. MOTION ALARM / INSTALLATION ALARME DE MOUVEMENT .....	66
FIGURE 6-12. BEACONS INSTALL / INSTALLATION FEUX A ECLATS .....	68
SECTION 7 - DECALS INSTALL / INSTALLATION AUTOCOLLANTS .....	71
FIGURE 7-1. DECALS INSTALL / INSTALLATION AUTOCOLLANTS .....	72
FIGURE 7-2. DECAL EAC (RUSSIA,CIS) INSTALL / INSTALLATION AUTOCOLLANT EAC .....	74
FIGURE 7-3. NAME PLATE INSTALL / INSTALLATION PLAQUE CONSTRUCTEUR .....	76
SECTION 8 - RECOMMENDED PARTS LIST / LISTE DES PIECES RECOMMANDEES .....	79
FIGURE 8-1. RECOMMENDED PARTS LIST / LISTE DE PIECES RECOMMANDEES .....	80
PART NUMBER INDEX .....	81

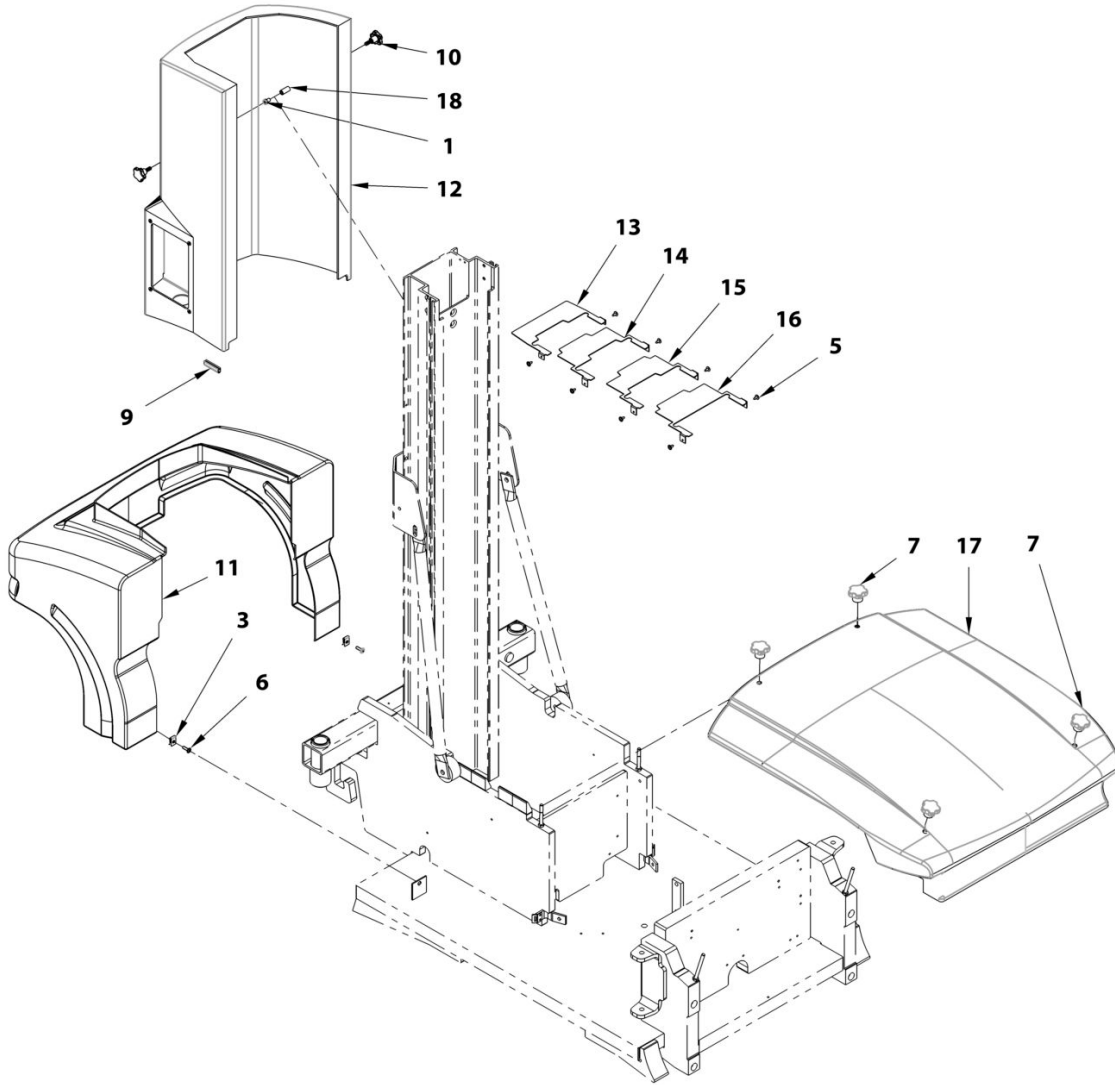


# **SECTION 1 - COVERS INSTALL / INSTALLATION CAPOTS**

## **SECTION 1 - COVERS INSTALL / INSTALLATION CAPOTS**

# SECTION 1 - COVERS INSTALL / INSTALLATION CAPOTS

FIGURE 1-1. COVERS INSTALL / INSTALLATION CAPOTS



ART\_SA0060



## SECTION 1 - COVERS INSTALL / INSTALLATION CAPOTS

**FIGURE 1-1. COVERS INSTALL / INSTALLATION CAPOTS**

ITEM	PART NUMBER	QTY	DESCRIPTION	REV
	SA0060	Ref	<b>HOODS INSTALL / INSTALLATION CAPOTS</b>	
1	000059	2	M08x12 8.8 S SOCK HEAD MACH SCREW / VIS CHC M08x12 8.8 BI FT TETE BASSE	
3	110026	2	M06 CAGE HEX NUT / ECROU CAGE M6	
5	130007	8	Ø4.8x13 SHEET METAL SCREW / VIS AUTOTARAUDEUSE Ø4.8-13 BI	
6	130021	2	M06x20 8.8 ROUND HEAD MACH SCREW / VIS BOMBEE ULF M06x20 8.8 BI FT	
7	190044	4	STARKNOB / BOUTON ETOILE	
9	400081	1	REINFORCED PVC PROFILE 672 / PROFIL 672 PVC ARME	
10	400095	2	5 LOBE HAND WHEEL / BOUTON ETOILE	
11	SD0559	1	COVER,FRONT / CAPOT AVANT	
12	1001228967	1	COVER,MAST / CAPOT MAT	
13	ST1146	1	MAST TOP COVER 1 / CAPOT MAT 1	
14	ST1147	1	MAST TOP COVER 2 / CAPOT MAT 2	
15	ST1148	1	MAST TOP COVER 3 / CAPOT MAT 3	
16	ST1149	1	MAST TOP COVER 4 / CAPOT MAT 4	
17	ST2801	1	COVER,REINFORCED REAR / CAPOT ARRIERE RENFORCE	
18	ST3063	2	SPACER L=25 / ENTRETOISE L=25	

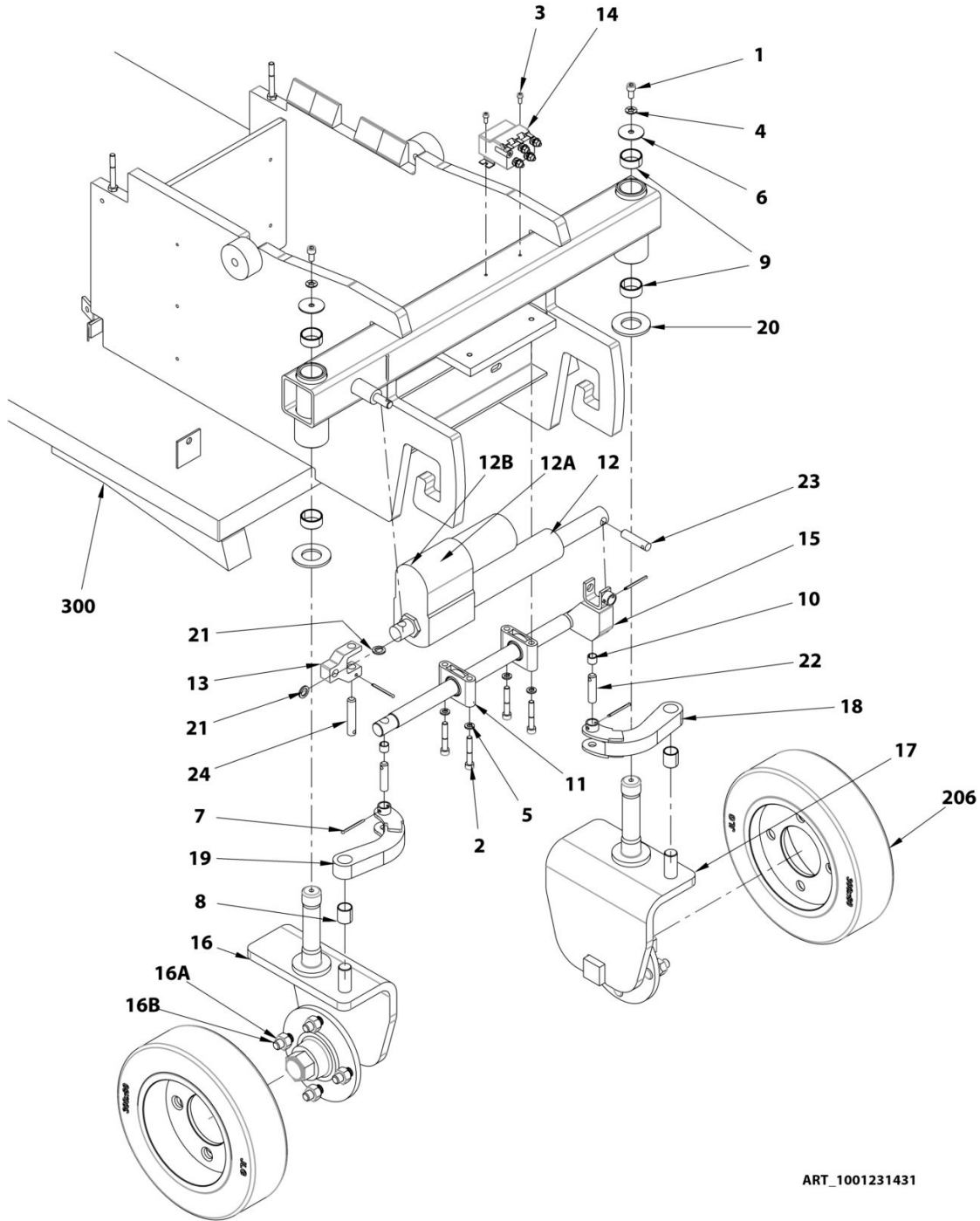


## **SECTION 2 - FRAME INSTALL / INSTALLATION CHASSIS**

## **SECTION 2 - FRAME INSTALL / INSTALLATION CHASSIS**

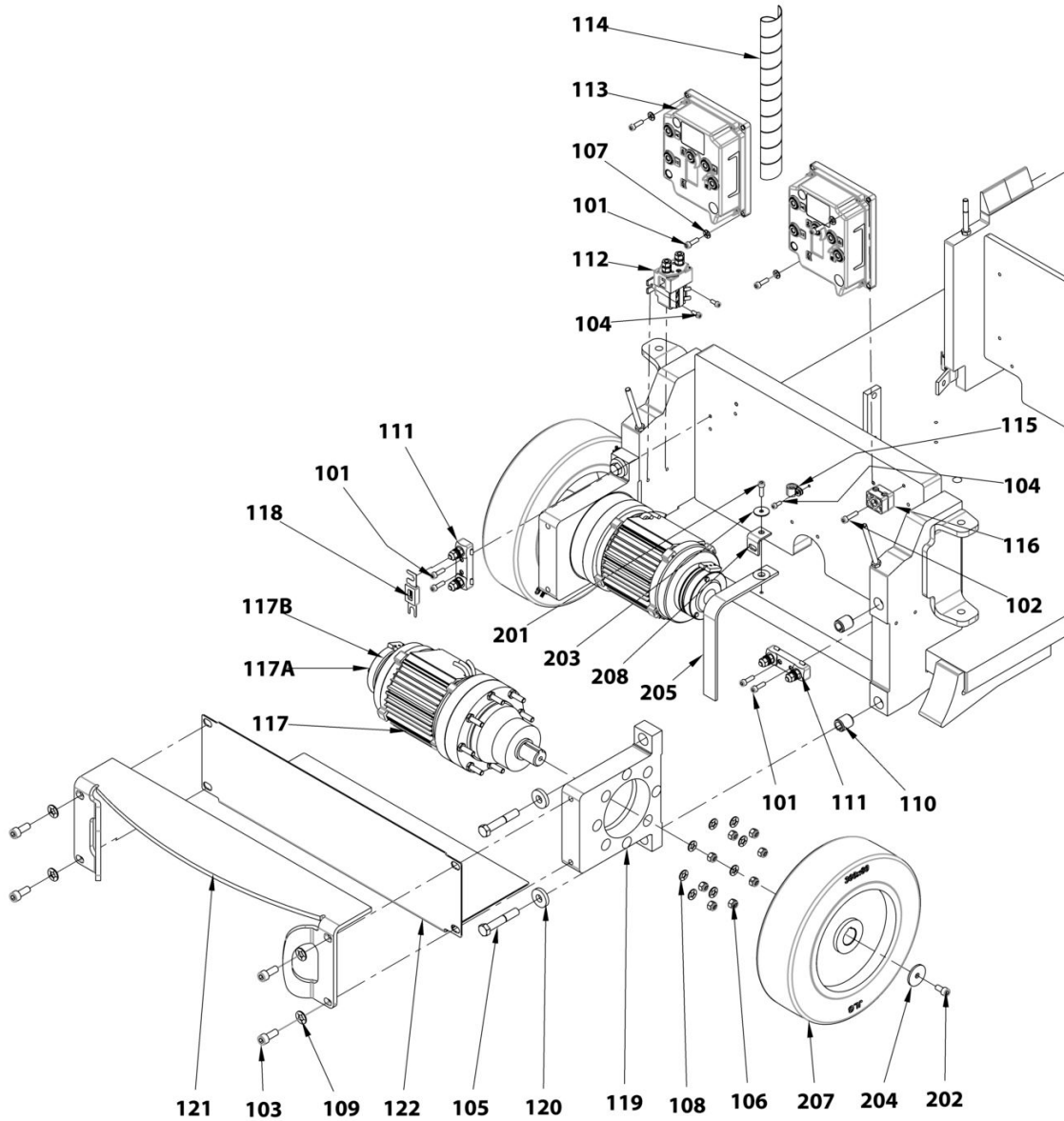
# SECTION 2 - FRAME INSTALL / INSTALLATION CHASSIS

## FIGURE 2-1. FRAME INSTALL / INSTALLATION CHASSIS



ART\_1001231431

# SECTION 2 - FRAME INSTALL / INSTALLATION CHASSIS



ART\_1001214993

## SECTION 2 - FRAME INSTALL / INSTALLATION CHASSIS

FIGURE 2-1. FRAME INSTALL / INSTALLATION CHASSIS

ITEM	PART NUMBER	QTY	DESCRIPTION	REV
		Ref	<b>INSTALL,FRAME / INSTALLATION CHASSIS</b>	
0	1001231431	Ref	<b>INSTALL,STEERING / INSTALLATION DIRECTION</b>	
1	000018	2	M08x16 8.8 SOCKET HEAD MACH SCREW / VIS CHC M08x16 8.8 BI FT	
2	000011	4	M08x50 8.8 SOCKET HEAD CAPSCREW / VIS CHC M08x50 8.8 BI FP	
3	000067	2	M05x12 8.8 SOCKET HEAD MACH SCREW / VIS CHC M05x12 8.8 BI FT	
4	120010	2	LOCK WASHER D08x18 / RONDELLE CONTACT dD 08x18 BI	
5	120021	4	HELICAL SPRING LOCK WASHER Ø8 / RONDELLE GROWER Ø8 BI	
6	120026	2	dD 08x40 WASHER / RONDELLE dD 08x40 BI	
7	140019	5	Ø4x40 COTTER PIN / GOUPILLE FENDUE Ø4x40	
8	150022	2	BUSHING Ø20 H25 DX / BAGUE Ø20 H25 DX	
9	150025	4	BUSHING Ø30 H15 DU / BAGUE Ø30 H15 DU	
10	150029	2	Ø12 H12 BUSHING / BAGUE Ø12 H12	
11	150060	2	PILLOW BLOCK BEARING / PALIER A SEMELLE	
12	1001214759	1	ACTUATOR,ELECTRICAL 24VDC / VERIN ELECTRIQUE 24VDC	
12A	952167	1	KIT,POTENTIOMETER REPLACEMENT / KIT REMPLACEMENT POTENTIOMETRE	
12B	952169	1	SEAL,ACTUATOR HOUSING / JOINT CAISSON VERIN	
13	1001231380	1	PLATE,CYLINDER YOKE / CHAPE VERIN DE DIRECTION	
14	1001231430	1	RELAY,STEERING / RELAIS DE DIRECTION	
15	DL0555	1	TRANSMISSION LUG / PATTE DE TRANSMISSION	
16	DL0576	1	RIGHT STEERING BRACKET / EQUERRE DIRECTION DROITE	
16A	920076	8	M14x150 WHEEL NUT / ECROU DE ROUE M14x150	
16B	920077	8	M14x150 L=40/30 RATCHET STUD / GOUJON CRANTE M14x150 L=40/30	
17	DL0577	1	LEFT STEERING BRACKET / EQUERRE DIRECTION GAUCHE	
18	SD0549	1	LEFT STEERING ARM / BIELETTE DE DIRECTION GAUCHE	
19	SD0550	1	RIGHT STEERING ARM / BIELETTE DE DIRECTION DROITE	
20	US0134	2	PAD,WASHER D31x60x4 / RONDELLE D'APPUI	
21	US0190	2	WHASHER-SPEC,D20xd13xTh2 / RONDELLE TRAITEE dDH 13x20x02	
22	US0395	2	STEERING ROD LINK PIN / AXE BIELLETTE DE DIRECTION	
23	US0417	1	TRANSMISSION PLATE SHAFT / AXE PATTE DE TRANSMISSION	
24	US0419	1	STEERING YOKE SHAFT / AXE CHAPE DE DIRECTION	
100	1001214993	Ref	<b>INSTALL,DRIVE / INSTALLATION MOTORISATION</b>	
101	000005	8	M06x20 8.8 SOCKET HEAD MACH SCREW / VIS CHC M06x20 8.8 BI FT	
102	000008	1	M06x25 8.8 SOCKET HEAD MACH SCREW / VIS CHC M06x25 8.8 BI FT	
103	000013	4	M10x25 8.8 SOCKET HEAD MACH SCREW / VIS CHC M10x25 8.8 BI FT	
104	000067	3	M05x12 8.8 SOCKET HEAD MACH SCREW / VIS CHC M05x12 8.8 BI FT	
105	100035	4	M12x70 8.8 HEX HEAD CAPSCREW / VIS H M12x70 8.8 BI FP	
106	110004	16	M08 GR. 8.8 LOCK NUT / ECROU FREIN M8 CL08 BI	

## SECTION 2 - FRAME INSTALL / INSTALLATION CHASSIS

ITEM	PART NUMBER	QTY	DESCRIPTION	REV
107	120009	4	LOCK WASHER D06x14 / RONDELLE CONTACT dD 06x14 BI	
108	120010	16	LOCK WASHER D08x18 / RONDELLE CONTACT dD 08x18 BI	
109	120011	4	LOCK WASHER D10x22 / LOCK WASHER D10x22	
110	140018	4	SAFETY PIN / GOUPILLE ELASTIQUE	
111	260077	2	TERMINAL,FUSE HOLDER,DIN43560 / PORTE FUSIBLE DE PUISSANCE	
112	260208	1	RELAY,SINGLE POLE / RELAIS DE PUISSANCE	
113	1001231427	2	CONTROL,ACEX 24VDC / VARIATEUR ACEX 24VDC	
114	400010	1	HOSE GUARD (quantity indicated in meter) / GAINÉ (quantité en mètres)	
115	400034	1	CLAMP,D9 / COLLIER D9	
116	400037	1	CLAMP,TWIN 10-10 PP,BLK / COLLIER DOUBLE D10	
117	1001230502	2	MOTOR,DRIVE AC 0.3kW / MOTEUR TRANSLATION AC 0.3kW	
117A	951042	2	BRAKE, COMPLETE KIT, ZFB05 / KIT FREIN COMPLET	
117B	1001210422	2	BRAKE,ROTOR / DISQUE DE FREIN	
118	950110	1	63A FUSE / FUSIBLE 63A	
119	DL0792	2	MOTOR FLANGE / BRIDE MOTEUR	
120	ST1648	4	MOTOR WASHER / RONDELLE MOTEUR	
121	ST3028	1	STEP / MARCHE PIED	
122	ST3035	1	MOTORS GUARD / TOLE DE PROTECTION MOTEURS	
200	SA0049	Ref	<b>INSTALL,TIRES&amp;WHEELS / INSTALLATION ROUES</b>	
201	000005	1	M06x20 8.8 SOCKET HEAD MACH SCREW / VIS CHC M06x20 8.8 BI FT	
202	000018	2	M08x16 8.8 SOCKET HEAD MACH SCREW / VIS CHC M08x16 8.8 BI FT	
203	120004	1	dD 06x25x1.2 WASHER / RONDELLE dD 06x25x1.2	
204	US0531	2	WASHER-SPEC,D8XD37XTH.3 / RONDELLE dD 8x37x3	
205	4240147	1	STRAP,ANTI-STATIC / BANDE ANTI STATIQUE	
206	ST2996	2	WHEEL,STEERING / ROUE DIRECTRICE	
207	ST2997	2	NON MARKING DRIVING WHEEL / ROUE MOTRICE	
208	ST1110	1	BRACKET,LOCKING / EQUERRE BLOCAGE	
300	1001231328	1	FRAME / CHASSIS	



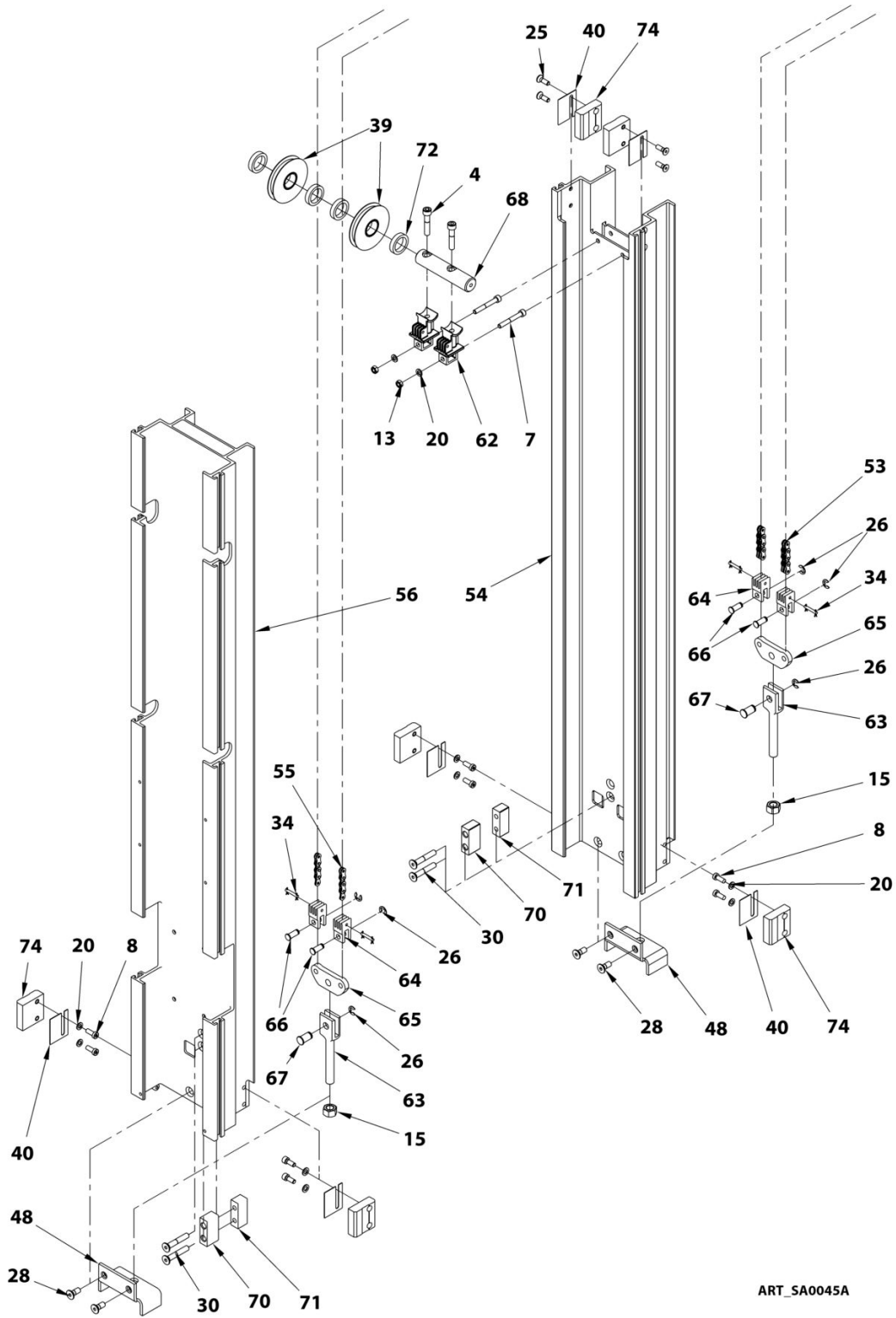


## **SECTION 3 - MASTS INSTALL / INSTALLATION MATS**

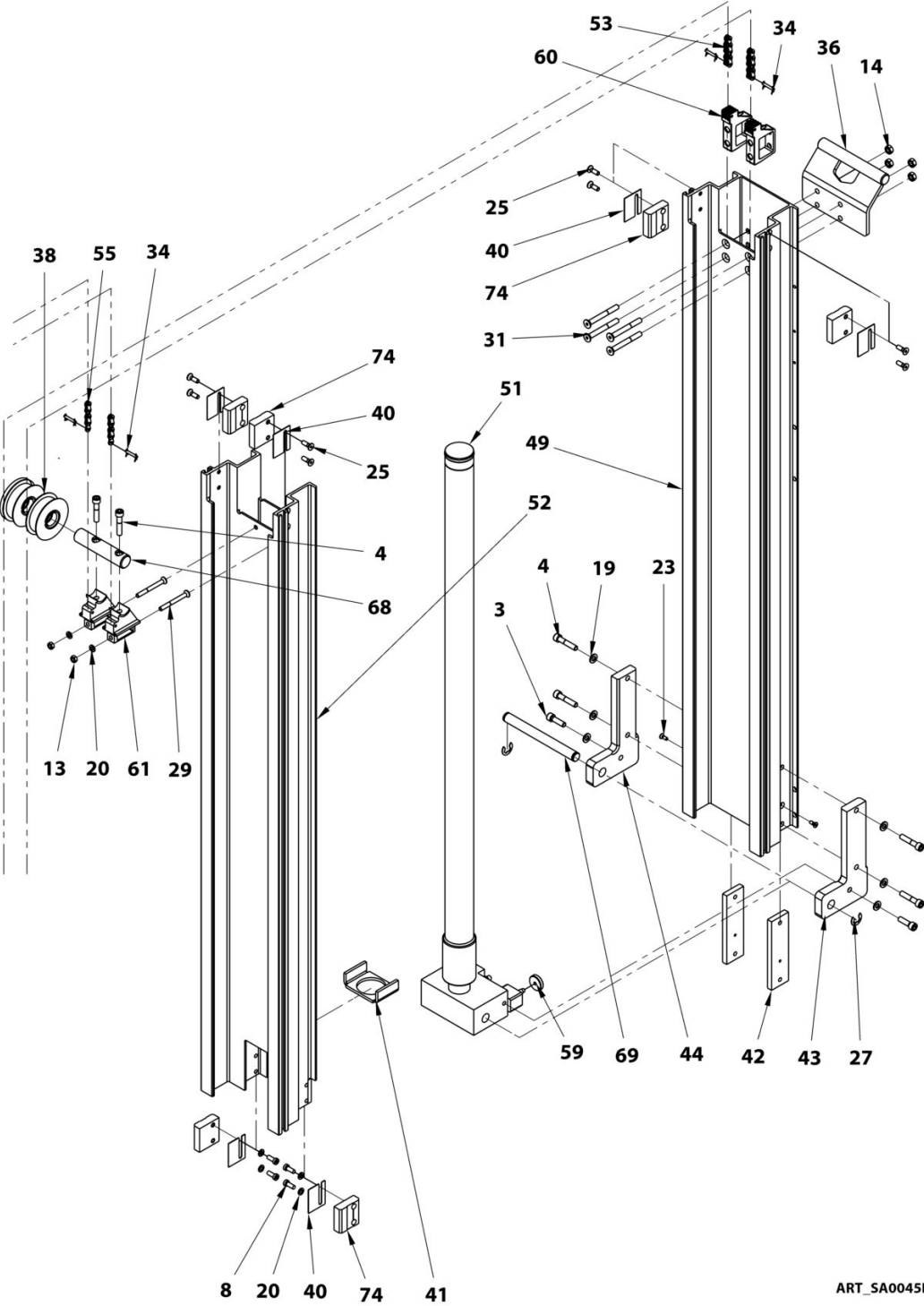
## **SECTION 3 - MASTS INSTALL / INSTALLATION MATS**

# SECTION 3 - MASTS INSTALL / INSTALLATION MATS

## FIGURE 3-1. MASTS INSTALL / INSTALLATION MATS

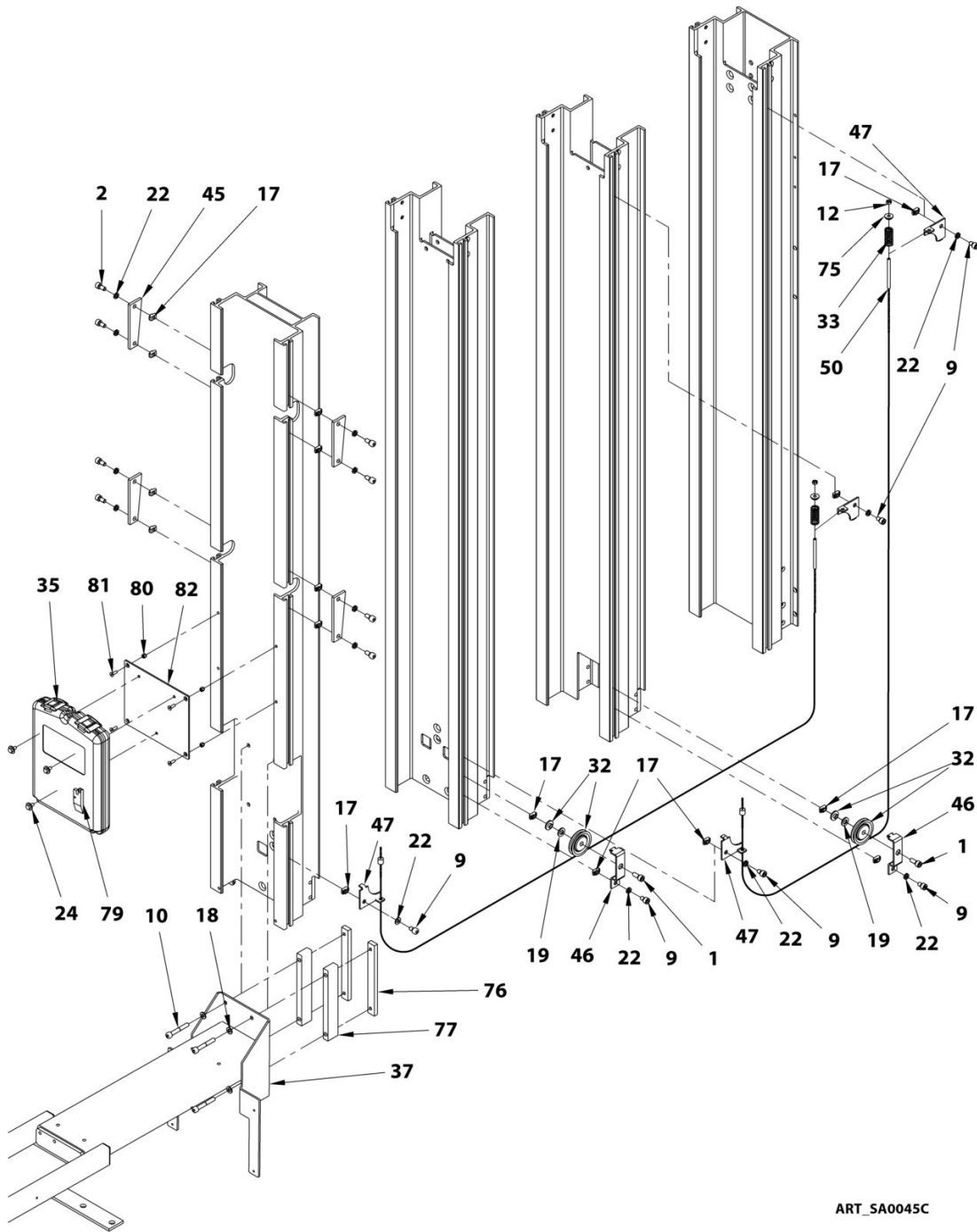


# SECTION 3 - MASTS INSTALL / INSTALLATION MATS



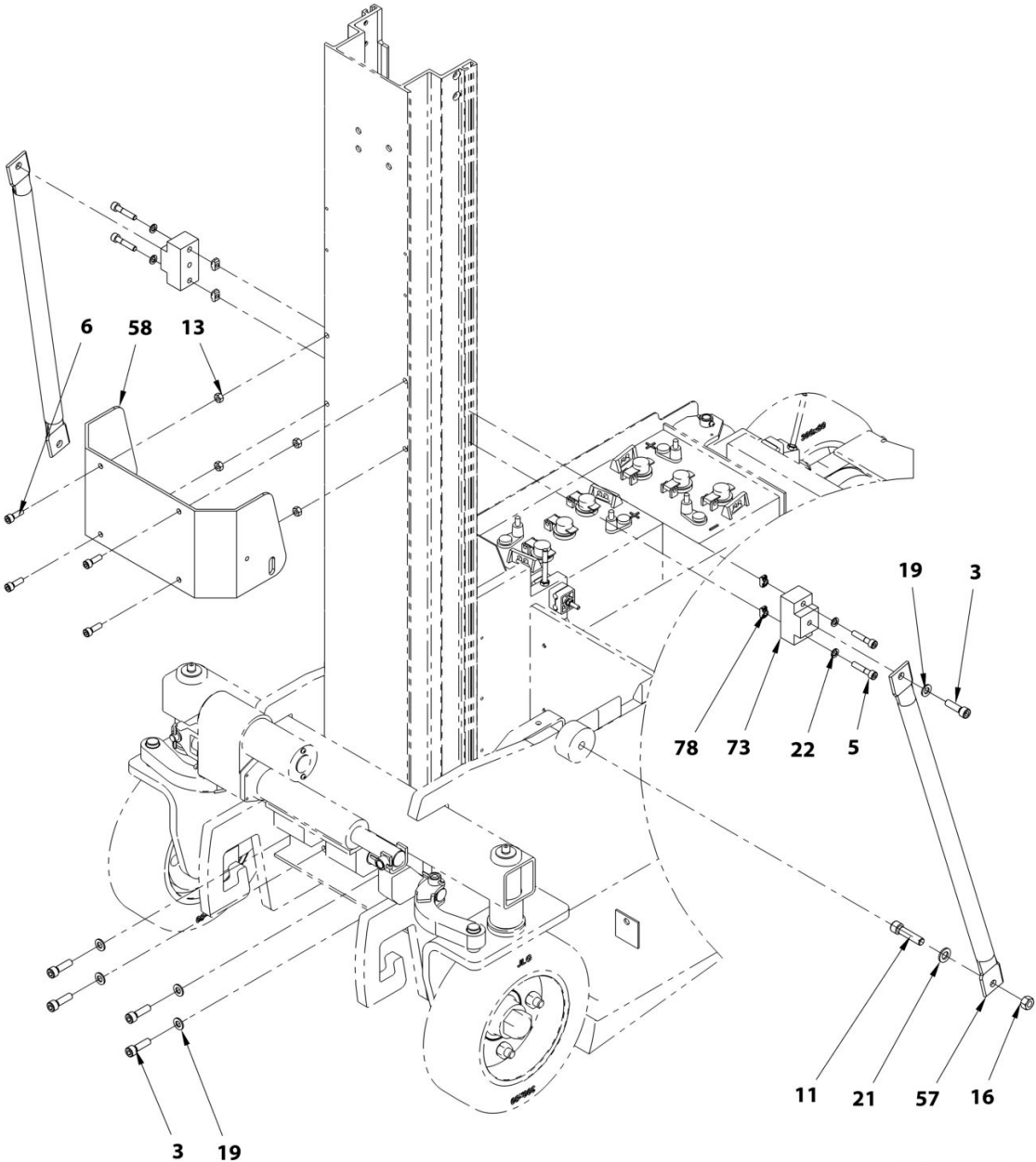
ART\_SA0045B

# SECTION 3 - MASTS INSTALL / INSTALLATION MATS



ART\_SA0045C

# SECTION 3 - MASTS INSTALL / INSTALLATION MATS



ART\_SA0045D

## SECTION 3 - MASTS INSTALL / INSTALLATION MATS

FIGURE 3-1. MASTS INSTALL / INSTALLATION MATS

ITEM	PART NUMBER	QTY	DESCRIPTION	REV
	SA0045	Ref	<b>INSTALL, MAST / INSTALLATION MATS</b>	
1	000006	2	M08x20 8.8 SOCKET HEAD MACH SCREW / VIS CHC M08x20 8.8 BI FT	
2	000018	8	M08x16 8.8 SOCKET HEAD MACH SCREW / VIS CHC M08x16 8.8 BI FT	
3	000019	8	M10x35 8.8 SOCKET HEAD MACH SCREW / VIS CHC M10x35 8.8 BI FT	
4	000035	8	M10x50 12.9 SOCKET HEAD CAPSCREW / VIS CHC M10x50 12.9 BR FT	
5	000043	4	M08x40 8.8 SOCKET HEAD MACH SCREW / VIS CHC M08x40 8.8 BI FT	
6	000053	4	M08x25 8.8 SOCKET HEAD MACH SCREW / VIS CHC M08x25 8.8 BI FT	
7	000057	2	M08x60 8.8 S SOCKET HEAD CAPSCREW / VIS CHC M08x60 8.8 BI FT TETE BASSE	
8	000058	12	M08x20 8.8 S SOCK. HEAD MACH SCREW / VIS CHC M08x20 8.8 BI FT TETE BASSE	
9	000059	6	M08x12 8.8 S SOCK HEAD MACH SCREW / VIS CHC M08x12 8.8 BI FT TETE BASSE	
10	000078	4	M08x55 8.8 SOCKET HEAD CAPSCREW / VIS CHC M08x55 8.8 BI FP	
11	100076	2	M12x60 8.8 HEX HEAD CAPSCREW / VIS H M12x60 8.8 BI FP	
12	110003	2	M06 GR. 8.8 LOCK NUT / ECROU FREIN M6 CL08 BI	
13	110004	8	M08 GR. 8.8 LOCK NUT / ECROU FREIN M8 CL08 BI	
14	110005	4	M10 GR. 8.8 LOCK NUT / ECROU FREIN M10 CL08 BI	
15	110011	2	M16 GR. 10.9 LOCK NUT / ECROU FREIN M16 CL10 BI	
16	110014	2	M12 GR. 8.8 LOCK NUT / ECROU FREIN M12 CL08 BI	
17	110030	16	M08 RECTANGULAR BASE NUT / ECROU A EMBASE RECTANGULAIRE M08	
18	120010	4	LOCK WASHER D08x18 / RONDELLE CONTACT dD 08x18 BI	
19	120011	14	LOCK WASHER D10x22 / RONDELLE CONTACT dD 10x22 BI	
20	120014	16	M08 WASHER / RONDELLE M08 BI	
21	120015	2	LOCK WASHER D12x27 / RONDELLE CONTACT dD 12x27 BI	
22	120021	18	HELICAL SPRING LOCK WASHER Ø8 / RONDELLE GROWER D8 BI	
23	130003	2	M06x16 10.9 COUNTERSUNK HEAD M. S. / VIS FHC M06x16 10.9 BI FT	
24	130009	3	SHEET METAL SCREW Ø6.5x16 / VIS A TOLE D6.5x16	
25	130025	12	M08x25 10.9 COUNTERSUNK HEAD M. S. / VIS FHC M08x25 10.9 BI FT	
26	130028	6	RETAINING RING Ø9 / CIRCLIPS EXTERIEUR D9	
27	130029	2	CIRCLIP, BENZING / CIRCLIPS EXTERIEUR D15	
28	130030	4	M010x25 10.9 COUNTERSUNK HEAD M. S. / VIS FHC M10x25 10.9 BI FT	
29	130031	2	M08x80 10.9 COUNTERSUNK HEAD CAPS. / VIS FHC M08x80 10.9 BI FP	
30	130032	4	M010x60 10.9 COUNTERSUNK HEAD M. S. / VIS FHC M10x60 10.9 BI FT	
31	130033	4	M10x90 10.9 COUNTERSUNK HEAD CAPS. / VIS FHC M10x90 10.9 BI FP	
32	150028	2	BACKUP PULLEY / POULIE DE RAPPEL	
33	160022	2	SPRING / RESSORT	
34	170004	8	CLEVIS PIN / AXE DE CHAPE	

## SECTION 3 - MASTS INSTALL / INSTALLATION MATS

ITEM	PART NUMBER	QTY	DESCRIPTION	REV
35	8990147	1	HOLDER, MANUAL / BOITE PORTE-DOCUMENTS	
36	DL0440	1	LIFTING RING / ANNEAU D'ELINGAGE	
37	DL0761	1	SUPPORT, PLATFORM / SUPPORT PLATE-FORME	
38	SE0305	2	ASSEMBLY, PULLEY Ø80x24 / ASSEMBLAGE POULIE D80x24	
39	SE0307	2	ASSEMBLY, PULLEY Ø83x10 / ASSEMBLAGE POULIE D83x10	
40	ST1109	12	SHIM (4 sizes : see Service Manual) / CALE (4 épaisseurs: voir Manuel de Service)	
41	ST1111	1	CYLINDER BASE PLATE / BUTEE DE VERIN	
42	ST1113	2	BASE PLATE CYLINDER / BRIDE DE VERIN	
43	ST1114	1	LEFT CYLINDER BRACKET / PATTE GAUCHE DE VERIN	
44	ST1115	1	RIGHT CYLINDER BRACKET / PATTE DROITE DE VERIN	
45	ST1117	4	PLATFORM PLATE / FIXATION PANIER	
46	ST1118	2	BACKUP PULLEY SUPPORT / SUPPORT POULIE DE RAPPEL	
47	ST1119	4	STEEL WIRE BRACKET / EQUERRE CABLE	
48	ST1125	2	SPREADER BRACKET / EQUERRE PALONNIER	
49	ST1625	1	MAST #1 / MAT #1	
50	ST1627	2	MAST BACKUP CABLE / CABLE DE RAPPEL DE MATS	
51	ST1628	1	MAST CYLINDER / VERIN DE MAT	
52	ST1629	1	MAST #2 / MAT #2	
53	ST1630	2	LL10-44 CHAIN / CHAINE LL10-44	
54	ST1631	1	MAST #3 / MAT #3	
55	ST1632	2	LL10-22 CHAIN / CHAINE LL10-22	
56	ST1633	1	MAST #4 / MAT #4	
57	ST1636	2	TUBE,SHROUD / TUBE HAUBAN	
58	ST1670	1	MAST HOUSING / CAISSON DE MAT	
59	US0277	1	CYLINDER EMERGENCY BUTTON / BOUTON D'URGENCE VERIN	
60	US0278	2	BRACKET, YOKE C1 / CHAPE DE CHAINE	
61	US0279	2	PULLEY SUPPORT A / SUPPORT POULIE A	
62	US0280	2	PULLEY SUPPORT B / SUPPORT POULIE B	
63	US0281	2	CHAIN ANCHOR / CHAPE DE REGLAGE	
64	US0282	4	YOKE / CHAPE DE CHAINE	
65	US0283	2	SPREADER / PALONNIER DE REGLAGE	
66	US0284	4	CHAIN ANCHOR PIN / AXE DE CHAPE DE CHAINE	
67	US0285	2	SPREADER PIN / AXE PALONNIER	
68	US0286	2	AXLES, PULLEY PIN / AXE DE POULIE	
69	US0289	1	MAST CYLINDER PIN / AXE VERIN	
70	US0296	2	SAFETY SPACER / ENTRETOISE DE SECURITE	
71	US0297	2	SAFETY BLOCK / SECURITE PALONNIER	
72	US0298	4	PULLEY SPACER / ENTRETOISE POULIES	
73	US0300	2	SHROUD SPACER / ENTRETOISE HAUBAN	
74	US0321	12	SLIDE BLOCK (4 sizes: see Service Manual) / PATIN (4 épaisseurs: voir Manuel de Service)	
75	US0346	2	FLANGE BUSHING / RONDELLE EPAULEE	
76	US0425	2	PLATFORM FIXATION BLOCK / PLAQUE SUPPORT PANIER	
77	US0426	2	PLATFORM FIXATION SPACER / ENTRETOISE SUPPORT PANIER	
78	US0506	4	M08 SLIDING BLOCK NUT / ECROU COULISSEAU M08	
79	ST2741	1	SHIM, CHECKING / CALE DE VERIFICATION	
80	110002	4	M05 GR. 8.8 LOCK NUT / ECROU FREIN M5 CL08 BI	
81	130047	4	M5x16 8.8 COUNTERSUNK HEAD M SCR / VIS FHC M05x16 8.8 BI FT	

### SECTION 3 - MASTS INSTALL / INSTALLATION MATS

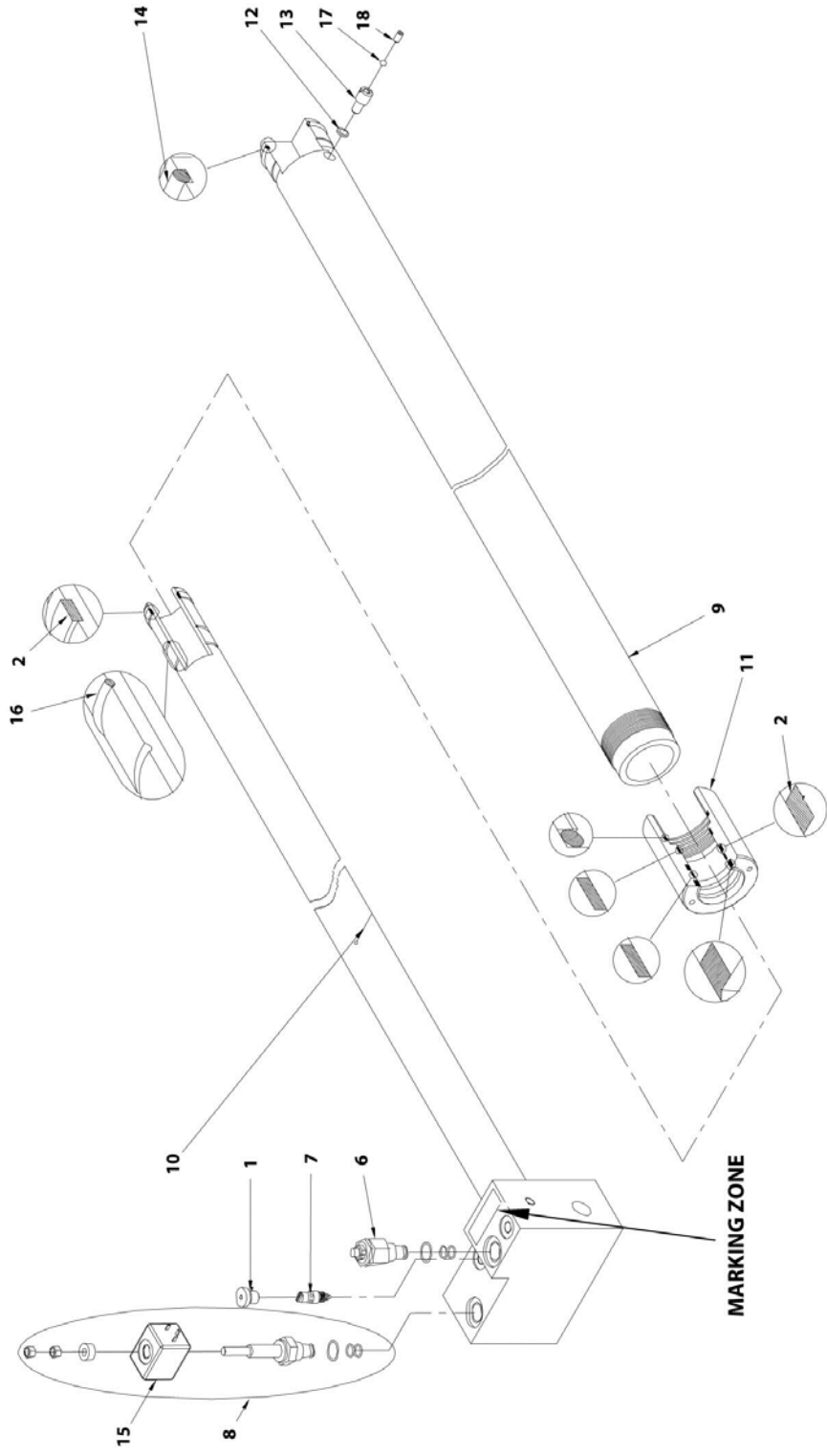
ITEM	PART NUMBER	QTY	DESCRIPTION	REV
82	1001231602	1	PLATE,DOCUMENT SUPPORT / PLATINE DU PORTE DOCUMENTS	





# SECTION 3 - MASTS INSTALL / INSTALLATION MATS

## FIGURE 3-2. MAST CYLINDER / VERIN DE MAT



ART\_ST1628

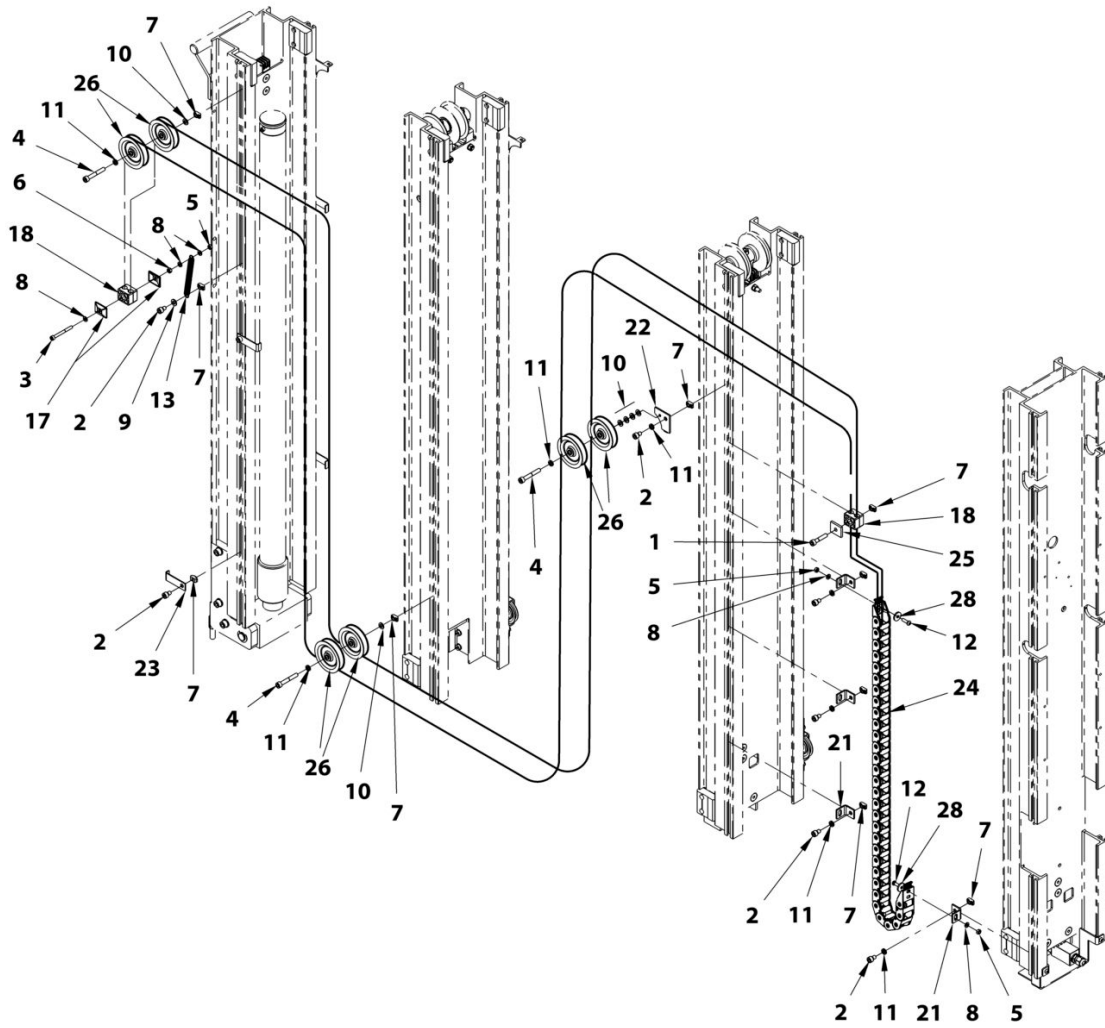
## SECTION 3 - MASTS INSTALL / INSTALLATION MATS

**FIGURE 3-2. MAST CYLINDER / VERIN DE MAT**

ITEM	PART NUMBER	QTY	DESCRIPTION	REV
	ST1628	Ref	<b>MAST CYLINDER / VERIN DE MAT</b>	
1	300034	1	CAP MALE BSPP 1/4IN / BOUCHON MALE BSPP 1/4"	
2	900172	1	CYLINDER SEAL KIT / POCHETTE DE JOINT VERIN	
6	970001	1	PRESSURE RELIEF VALVE (18 MPa) / REGULATEUR DE PRESSION 18MPa	
7	310102	1	FLOW REGULATOR VALVE 5l/mn / REGULATEUR DE DEBIT 5l/mn	
8	970038	1	HOLDING VALVE / ELECTROVANNE	
9	970045	1	CYLINDER BARREL / CORPS VERIN	
10	970046	1	CYLINDER ROD / TIGE VERIN	
11	970019	1	CYLINDER HEAD / TETE VERIN	
12	970052	1	BUSHING BS / BAGUE BS	
13	US0468	1	BLEEDING SCREW / VIS DE PURGE	
14	970022	1	O RING / JOINT TORIQUE	
15	970047	1	24 VDC COIL / BOBINE 24 VDC	
16	970030	1	STOP RING / JONC	
17	970056	1	BLEEDING BALL / BILLE DE PURGE	
18	130050	1	M06x8 HC SCREW / VIS HC M06x8 BR	

# SECTION 3 - MASTS INSTALL / INSTALLATION MATS

## FIGURE 3-3. CABLES ON MASTS INSTALL / INSTALLATION CABLES SUR MATS



ART\_SA0044

## SECTION 3 - MASTS INSTALL / INSTALLATION MATS

**FIGURE 3-3. CABLES ON MASTS INSTALL / INSTALLATION CABLES SUR MATS**

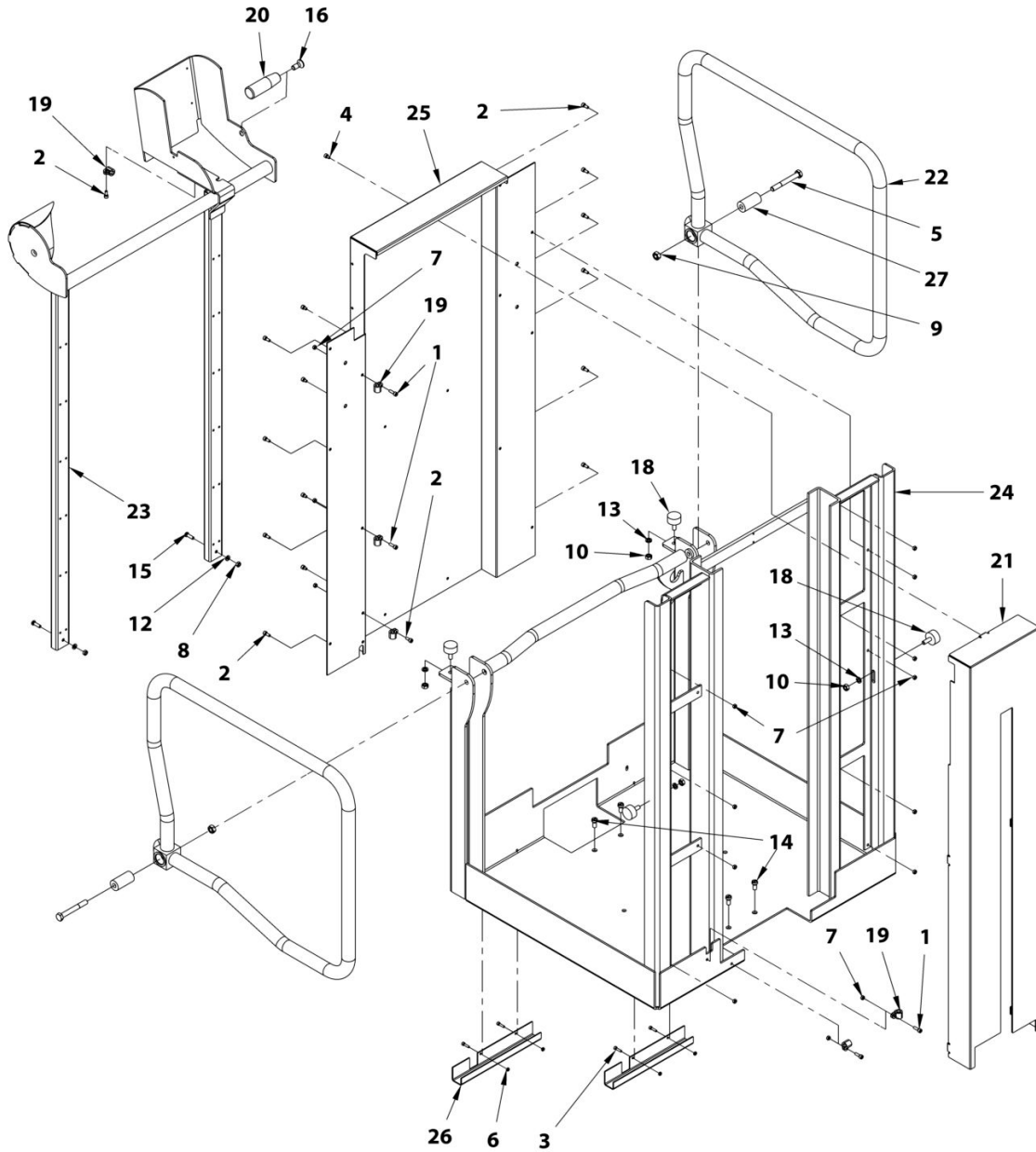
ITEM	PART NUMBER	QTY	DESCRIPTION	REV
	SA0044	Ref	<b>INSTALL,CABLES ON MASTS / INSTALLATION CABLES SUR MATS</b>	
1	000043	1	M08x40 8.8 SOCKET HEAD MACH SCREW / VIS CHC M08x40 8.8 BI FT	
2	000059	7	M08x12 8.8 S SOCK HEAD MACH SCREW / VIS CHC M08x12 8.8 BI FT TETE BASSE	
3	000076	1	M06x60 8.8 SOCKET HEAD CAPSCREW / VIS CHC M06x60 8.8 BI FP	
4	000078	3	M08x55 8.8 SOCKET HEAD CAPSCREW / VIS CHC M08x55 8.8 BI FP	
5	110003	3	M06 GR. 8.8 LOCK NUT / ECROU FREIN M6 CL08 BI	
6	110015	1	M06 GR. 8.8 HEX NUT / ECROU H M06 CL08 BI	
7	110030	10	M08 RECTANGULAR BASE NUT / ECROU A EMBASE RECTANGULAIRE M08	
8	120009	5	LOCK WASHER D06x14 / RONDELLE CONTACT dD 06x14 BI	
9	120010	1	LOCK WASHER D08x18 / RONDELLE CONTACT dD 08x18 BI	
10	120014	6	M08 WASHER / RONDELLE M08 BI	
11	120021	8	HELICAL SPRING LOCK WASHER Ø8 / RONDELLE GROWER D8 BI	
12	130021	2	M06x20 8.8 ROUND HEAD MACH SCREW / VIS BOMBEE ULF M06x20 8.8 BI FT	
13	160024	1	SPRING / RESSORT	
17	400012	2	PAIR 1/2 SHELL PLATE / PLAQUE DE SERRAGE T1	
18	400037	2	CLAMP,TWIN 10-10 PP,BLK / COLLIER DOUBLE D10	
19	400080	0.1m	SPIRAL HOUSING PLIOSPIRE D12 / GAINÉ SPIRALE PLIOSPIRE D12	
21	ST1110	4	PLATFORM T-BRACKET / EQUERRE PANIER	
22	ST1120	1	PULLEY BRACKET / SUPPORT POULIE	
23	ST1193	1	WIRE FIXATION / FIXATION CABLE	
24	ST3695	1	POWER TRACK,SR250L / CHEMIN DE CABLE SR250L	
25	ST2529	1	DOUBLE CLAMP PLATE / PLAQUE COLLIER DOUBLE	
26	US0360	6	PULLEY / POULIE	
28	120004	2	dD 06x25x1.2 WASHER / RONDELLE dD 06x25x1.2 BI	



**SECTION 4 - PLATFORM AND TRAY INSTALL / INSTALLATION  
PLATE-FORME ET TABLETTE**

# SECTION 4 - PLATFORM AND TRAY INSTALL / INSTALLATION PLATE-FORME ET TABLETTE

## FIGURE 4-1. PLATFORM INSTALL / INSTALLATION PLATE-FORME



ART\_SA0046



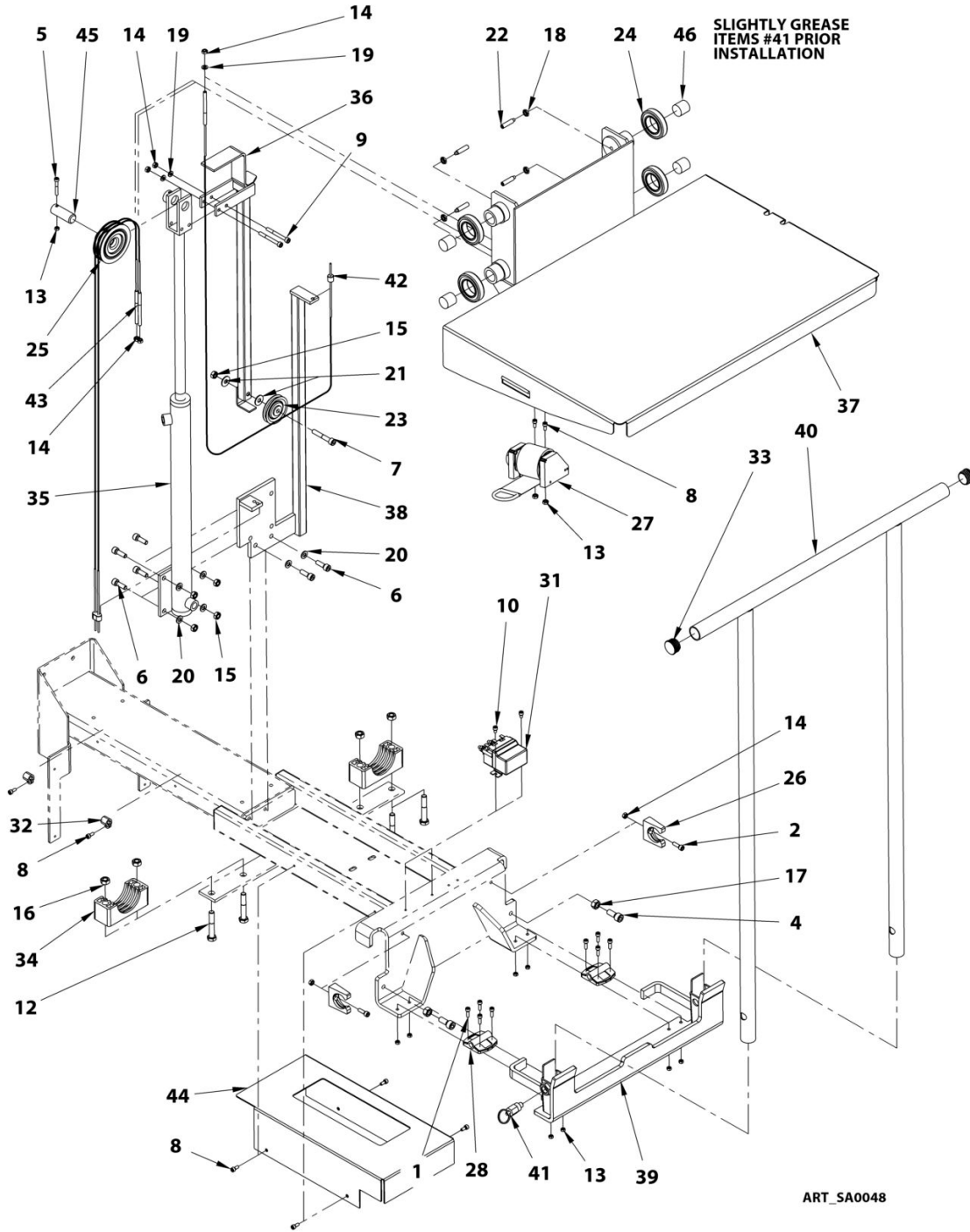
# SECTION 4 - PLATFORM AND TRAY INSTALL / INSTALLATION PLATE-FORME ET TABLETTE

**FIGURE 4-1. PLATFORM INSTALL / INSTALLATION PLATE-FORME**

ITEM	PART NUMBER	QTY	DESCRIPTION	REV
	SA0046	Ref	<b>PLATFORM INSTALL / INSTALLATION PLATE-FORME</b>	
1	000003	4	M05x16 8.8 SOCKET HEAD MACH SCREW / VIS CHC M05x16 8.8 BI FT	
2	000067	12	M05x12 8.8 SOCKET HEAD MACH SCREW / VIS CHC M05x12 8.8 BI FT	
3	000085	4	M04x16 8.8 SOCKET HEAD MACH SCREW / VIS CHC M04x16 8.8 BI FT	
4	000089	5	M05x08 8.8 SOCKET HEAD MACH SCREW / VIS CHC M05x08 8.8 BI FT	
5	100091	2	M10x80 8.8 HEX HEAD CAPSCREW / VIS H M10x80 8.8 BI FP	
6	110001	4	M04 GR. 8.8 LOCK NUT / ECROU FREIN M4 CL08 BI	
7	110002	14	M05 GR. 8.8 LOCK NUT / ECROU FREIN M5 CL08 BI	
8	110003	2	M06 GR. 8.8 LOCK NUT / ECROU FREIN M6 CL08 BI	
9	110005	2	M10 GR. 8.8 LOCK NUT / ECROU FREIN M10 CL08 BI	
10	110016	4	M08 GR. 8.8 HEX NUT / ECROU H M08 CL08 BI	
12	120009	2	LOCK WASHER D06x14 / RONDELLE CONTACT dD 06x14 BI	
13	120021	4	HELICAL SPRING LOCK WASHER Ø8 / RONDELLE GROWER D8 BI	
14	130013	4	M08x16 CROSS PAN HEAD CAPSCREW / VIS BOMBEE FENDUE M08x16 BI FT	
15	130021	2	M06x20 8.8 ROUND HEAD MACH SCREW / VIS BOMBEE ULF M06x20 8.8 BI FT	
16	130030	1	M010x25 10.9 COUNTERSUNK HEAD M. S. / VIS FHC M10x25 10.9 BI FT	
18	400015	4	BUMPER,DIA.30_TH.15 / BUTEE ELASTIQUE	
19	400034	5	CLAMP,D9 / COLLIER D9	
20	400089	1	PLASTIC HANDLE / POIGNEE PLASTIQUE	
21	DL0750	1	OUTSIDE COVER / CAPOT EXTERNE	
22	DL0751	2	GATE / PORTILLON	
23	DL0752	1	CONTROL HANDLE / GUIDON DE COMMANDE	
24	DL0753	1	PLATFORM,WELDMENT / ARMATURE PLATE-FORME	
25	DL0755	1	SHIELD,INSIDE COVER / CAPOT INTERIEUR	
26	ST3029	2	CABLES PROTECTION / PROTECTION CABLES	
27	ST3082	2	Ddh 25x10.5x50 SPACER / ENTRETOISE Ddh 25x10.5x50	

# SECTION 4 - PLATFORM AND TRAY INSTALL / INSTALLATION PLATE-FORME ET TABLETTE

## FIGURE 4-2. TRAY INSTALL / INSTALLATION TABLETTE



ART\_SA0048

# SECTION 4 - PLATFORM AND TRAY INSTALL / INSTALLATION PLATE-FORME ET TABLETTE

**FIGURE 4-2. TRAY INSTALL / INSTALLATION TABLETTE**

ITEM	PART NUMBER	QTY	DESCRIPTION	REV
	SA0048	Ref	<b>TRAY INSTALL / INSTALLATION TABLETTE</b>	
1	000003	8	M05x16 8.8 SOCKET HEAD MACH SCREW / VIS CHC M05x16 8.8 BI FT	
2	000005	2	M06x20 8.8 SOCKET HEAD MACH SCREW / VIS CHC M06x20 8.8 BI FT	
4	000013	2	M10x25 8.8 SOCKET HEAD MACH SCREW / VIS CHC M10x25 8.8 BI FT	
5	000030	1	M05x35 8.8 SOCKET HEAD CAPSCREW / VIS CHC M05x35 8.8 ZI FP	
6	000053	6	M08x25 8.8 SOCKET HEAD MACH SCREW / VIS CHC M08x25 8.8 BI FT	
7	000063	1	M08x45 8.8 S SOCKET HEAD CAPSCREW / VIS CHC M08x45 8.8 BI FT TETE BASSE	
8	000067	8	M05x12 8.8 SOCKET HEAD MACH SCREW / VIS CHC M05x12 8.8 BI FT	
9	000073	2	M06x55 8.8 SOCKET HEAD CAPSCREW / VIS CHC M06x55 8.8 BI FP	
10	000089	2	M05x08 8.8 SOCKET HEAD MACH SCREW / VIS CHC M05x08 8.8 BI FT	
12	100039	4	M10x60 8.8 HEX HEAD MACHINE SCREW / VIS H M10x60 8.8 BI FT	
13	110002	11	M05 GR. 8.8 LOCK NUT / ECROU FREIN M5 CL08 BI	
14	110003	7	M06 GR. 8.8 LOCK NUT / ECROU FREIN M6 CL08 BI	
15	110004	5	M08 GR. 8.8 LOCK NUT / ECROU FREIN M8 CL08 BI	
16	110005	4	M10 GR. 8.8 LOCK NUT / ECROU FREIN M10 CL08 BI	
17	110008	2	M10 GR. 8.8 HEX NUT / ECROU H M10 CL08 BI	
18	110022	4	M08 GR. 8.8 FLAT HEX NUT / ECROU Hm M08 CL04 ZI	
19	120009	3	LOCK WASHER D06x14 / RONDELLE CONTACT dD 06x14 BI	
20	120010	6	LOCK WASHER D08x18 / RONDELLE CONTACT dD 08x18 BI	
21	120014	2	M08 WASHER / RONDELLE M08 BI	
22	130056	4	M08x35 HC SCREW / VIS HC M08x35 BI	
23	150028	1	BACKUP PULLEY / POULIE DE RAPPEL	
24	150056	4	6007 2RS BEARING / ROULEMENT 6007 2RS	
25	150057	1	DOUBLE PULLEY FOR ELEVATION / POULIE DOUBLE DE LEVAGE	
26	190028	2	D28 CLIP / CLIP D28	
27	190076	1	REEL,STRAP / SANGLE A ENROULEUR	
28	190074	2	FRICTION HINGE / CHARNIERE A FRICTION	
31	260269	1	RELAY,REVERSING / RELAIS INVERSEUR	
32	400034	2	CLAMP,D9 / COLLIER D9	
33	400048	2	CAP D30 / BOUCHON D30	
34	400062	2	CLAMP D65 / COLLIER D65	
35	DL0713	1	TRAY RAISING CYLINDER S=400 / VERIN LEVAGE TABLETTE C=400	
35	960100	1	SEAL KIT FOR DL0713 / KIT DE JOINT POUR DL0713	
36	DL0749	1	BACK UP SHELF BRACKET / BARRE CABLE RAPPEL TABLETTE	
37	DL0910	1	TRAY / TABLETTE	
38	DL0762	1	TRAY CYLINDER SUPPORT / SUPPORT VERIN TABLETTE	
39	DL0763	1	REMOVABLE TUBE SUPPORT / SUPPORT TUBE AMOVIBLE	
40	DL0764	1	REMOVABLE TUBE / TUBE AMOVIBLE	
41	SE0308	1	LOCKING PIN / INDEX	

## SECTION 4 - PLATFORM AND TRAY INSTALL / INSTALLATION PLATE-FORME ET TABLETTE

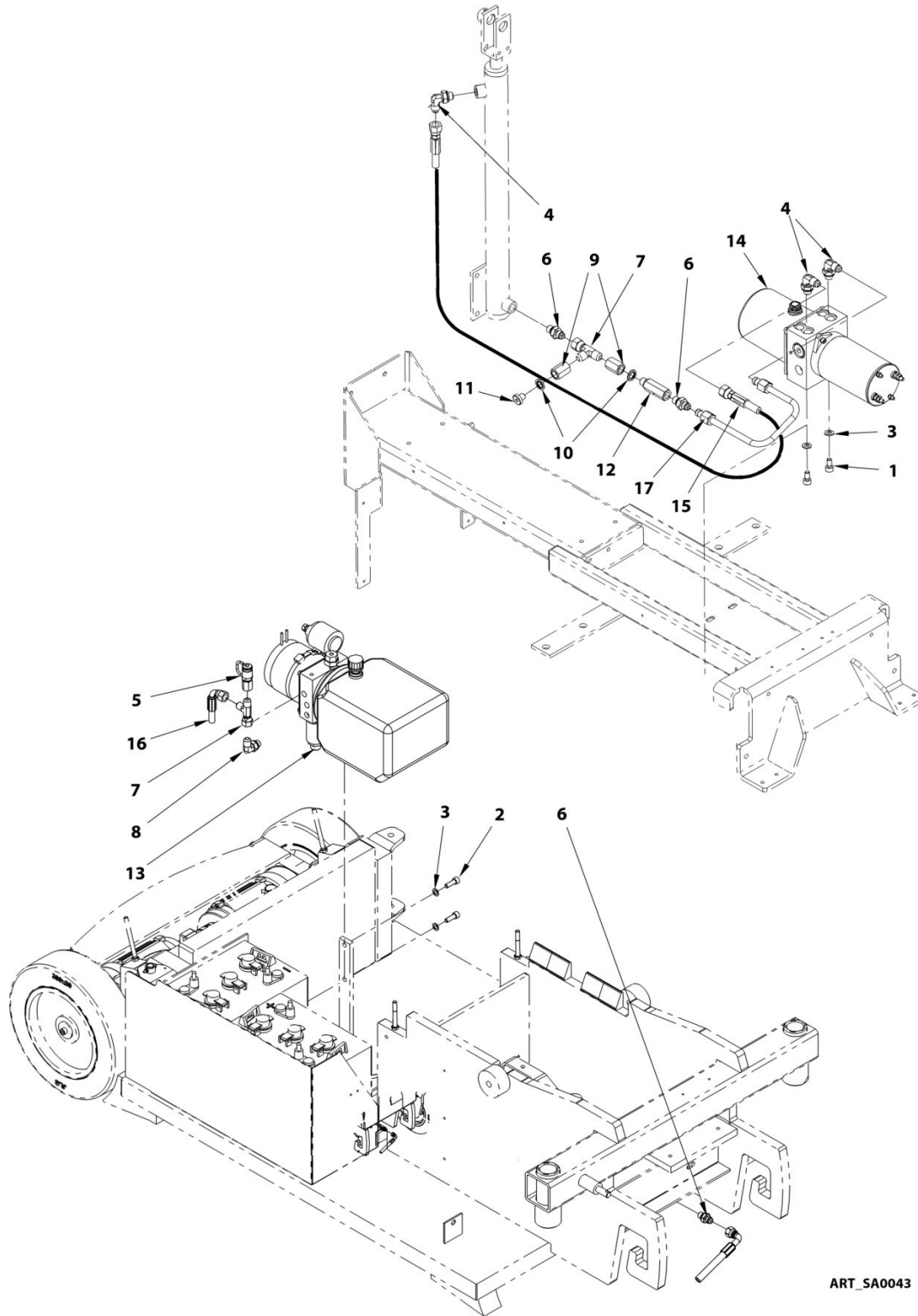
ITEM	PART NUMBER	QTY	DESCRIPTION	REV
42	ST2804	1	TRAY BACK UP CABLE / CABLE RAPPEL TABLETTE	
43	ST2967	1	DOUBLE CABLE ELEVATING TRAY / DOUBLE CABLE LEVAGE TABLETTE	
44	ST2973	1	TRAY HYDRAULIC UNIT COVER / CAPOT CENTRALE TABLETTE	
45	US0499	1	TRAY CYLINDER PIN / AXE VERIN TABLETTE	
46	US0509	4	ROLLER,SLIDING / PATIN DE GLISSEMENT	

## **SECTION 5 - HYDRAULIC INSTALL / INSTALLATION HYDRAULIQUE**

## **SECTION 5 - HYDRAULIC INSTALL / INSTALLATION HYDRAULIQUE**

# SECTION 5 - HYDRAULIC INSTALL / INSTALLATION HYDRAULIQUE

## FIGURE 5-1. HYDRAULIC INSTALL / INSTALLATION HYDRAULIQUE



ART\_SA0043

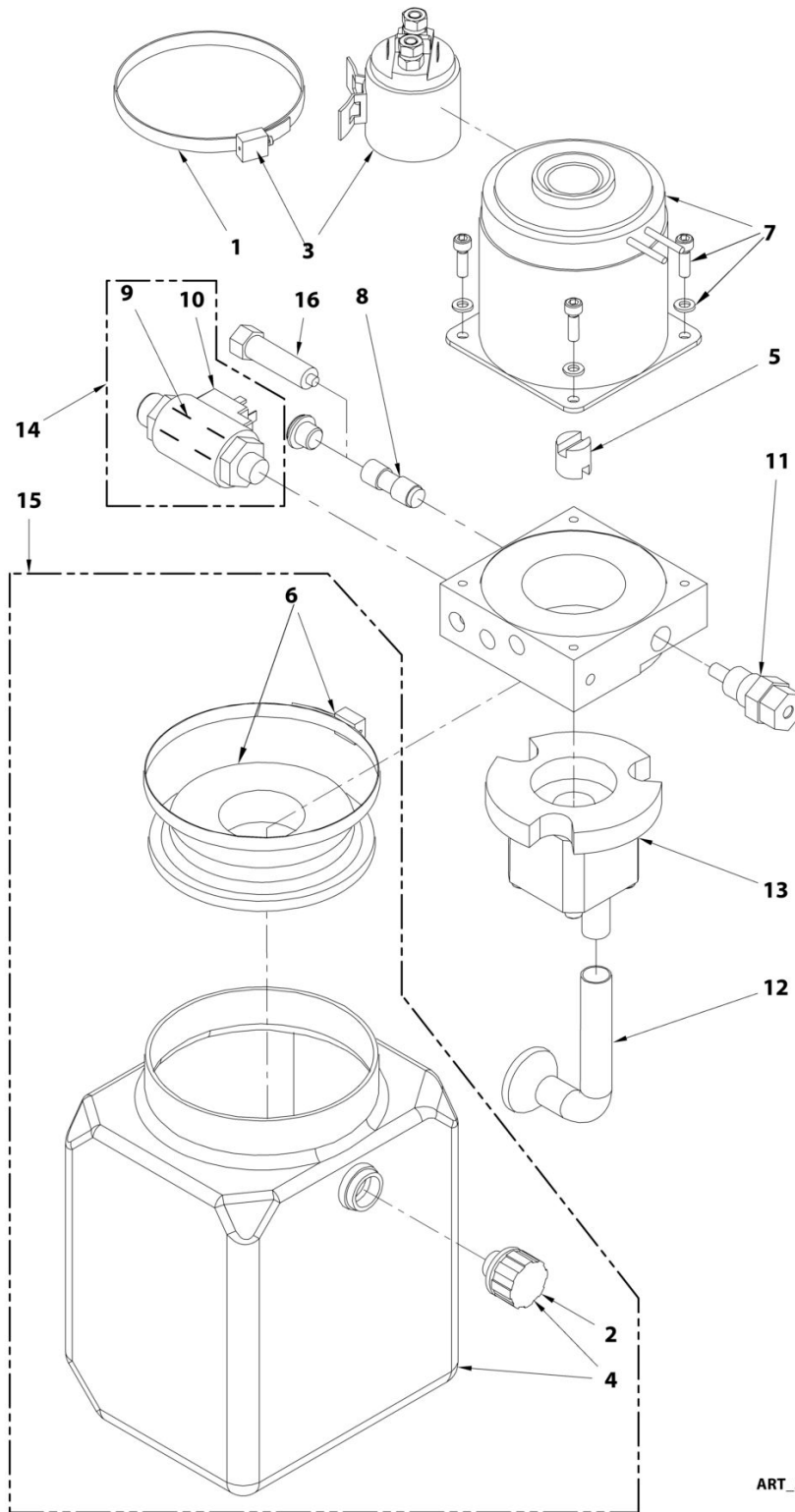
## SECTION 5 - HYDRAULIC INSTALL / INSTALLATION HYDRAULIQUE

### FIGURE 5-1. HYDRAULIC INSTALL / INSTALLATION HYDRAULIQUE

ITEM	PART NUMBER	QTY	DESCRIPTION	REV
	SA0043	Ref	<b>HYDRAULIC INSTALL / INSTALLATION HYDRAULIQUE</b>	
1	000018	2	M08x16 8.8 SOCKET HEAD MACH SCREW / VIS CHC M08x16 8.8 BI FT	
2	000053	2	M08x25 8.8 SOCKET HEAD MACH SCREW / VIS CHC M08x25 8.8 BI FT	
3	120010	4	LOCK WASHER D08x18 / RONDELLE CONTACT dD 08x18 BI	
4	300001	3	ADPT,90 S JIC/BSPP 6-4 FG / COUDE 90° Male BSPP 1/4 -Male JIC 9/16	
5	300004	1	PRESSURE TEST PLUG JIC9/16 SMK / PRISE DE PRESSION JIC 9/16 SMK	
6	300025	3	FITTING MALE BSPP1/4-MALE JIC9/16 / RACCORD MALE BSPP1/4-MALE JIC9/16	
7	300037	2	RUN TEE JIC 9/16 SWIVEL NUT / TE MALE JIC9/16-FEMELLE JIC9/16 TOUR.	
8	300075	1	90° ELBOW MALE M14x150-MALE JIC 9/16 / COUDE 90° MALE M14x150-MALE JIC 9/16	
9	300099	2	PRESGAUGE UNION FEM BSPT1/4-JIC9/16 / UNION MANO FEM BSPT 1/4 - JIC 9/16	
10	300108	2	SEAL,SELF CENTRALISING BONDED,1/4" / BAGUE BS 1/4	
11	300034	1	CAP MALE BSPP 1/4" / BOUCHON MALE BSPP 1/4"	
12	320064	1	VALVE,FLOW CONTROL WITH CARTRIDGE / REGULATEUR DEBIT AVEC CARTOUCHE 1/4	
13	520099	1	PUMP,MOTOR/TANK ASSEMBLY 1.25 cc / CENTRALE COMPLETE 1.25cc	
14	520121	1	OIL SYSTEM TRAY POWER UNIT / CENTRALE TABLETTE OIL SYSTEM	
15	DF0449	1	HOSE 1/4-0100cm-JIC Fem Swivel 9/16-JIC Fem Swivel 9/16 / FLEXIBLE 1/4-0100cm-JIC Fem tournant 9/16-JIC Fem tournant 9/16	
16	DF0656	1	HOSE 1/4" 125cm JIC Fem 9/16 90° JIC Fem 9/16 90°-90° / FLEXIBLE 1/4" 125cm JIC Fem 9/16 90° JIC Fem 9/16 90°-90°	
17	DF0979	1	RIGID PIPE-9/16 JIC 74° / TUYAU RIGIDE-9/16 JIC 74°	

# SECTION 5 - HYDRAULIC INSTALL / INSTALLATION HYDRAULIQUE

## FIGURE 5-2. COMPLETE POWER-UNIT 1.25CC / CENTRALE COMPLETE 1.25CC



ART\_520099



## SECTION 5 - HYDRAULIC INSTALL / INSTALLATION HYDRAULIQUE

**FIGURE 5-2. COMPLETE POWER-UNIT 1.25CC / CENTRALE COMPLETE 1.25CC**

ITEM	PART NUMBER	QTY	DESCRIPTION	REV
	520099		<b>COMPLETE POWER UNIT 1.25cc; INFO - 520099 / CENTRALE COMPLETE 1.25cm<sup>3</sup>; INFO - 520099</b>	
1	190036	1	CLAMP / COLLIER	
2	970033	1	BREATHER CAP / RENIFLARD	
3	970037	1	RELAY 24V WITH CLAMP / RELAIS 24V AVEC COLLIER	
4	970068	1	OIL TANK KIT WITH BREATHER CAP / KIT RESERVOIR ET RENIFLARD	
5	970044	1	COUPLING / ACCOUPLEMENT	
6	970069	1	EQUIPPED FLANGE / COLLERETTE EQUIPEE	
7	970058	1	MOTOR 1KW-24V / MOTEUR 1KW-24V	
8	970059	1	CHECK VALVE / CLAPET ANTI RETOUR	
9	970066	1	ELECTRO POPPET VALVE 24V / ELECTROVALVE A CLAPET 24V	
10	970067	1	ELECTRO POPPET VALVE COIL / BOBINE ELECTROVALVE A CLAPET	
11	970062	1	PRESSURE RELIEF VALVE / LIMITEUR DE PRESSION	
12	970063	1	NOZZLE FILTER / BUSE FILTRE	
13	970064	1	EQUIPPED SUPPORT/PUMP / SUPPORT/POMPE EQUIPEE	
14	970070	1	KIT,ELEC POPPET VALVE / KIT ELECTROVANNE A CLAPET	
15	970071	1	KIT,TANK WITH FLANGE / KIT RESERVOIR ET FLASQUE	
16	970072	1	TOOL, FOR CHECK VALVE / OUTIL POUR CLAPET	

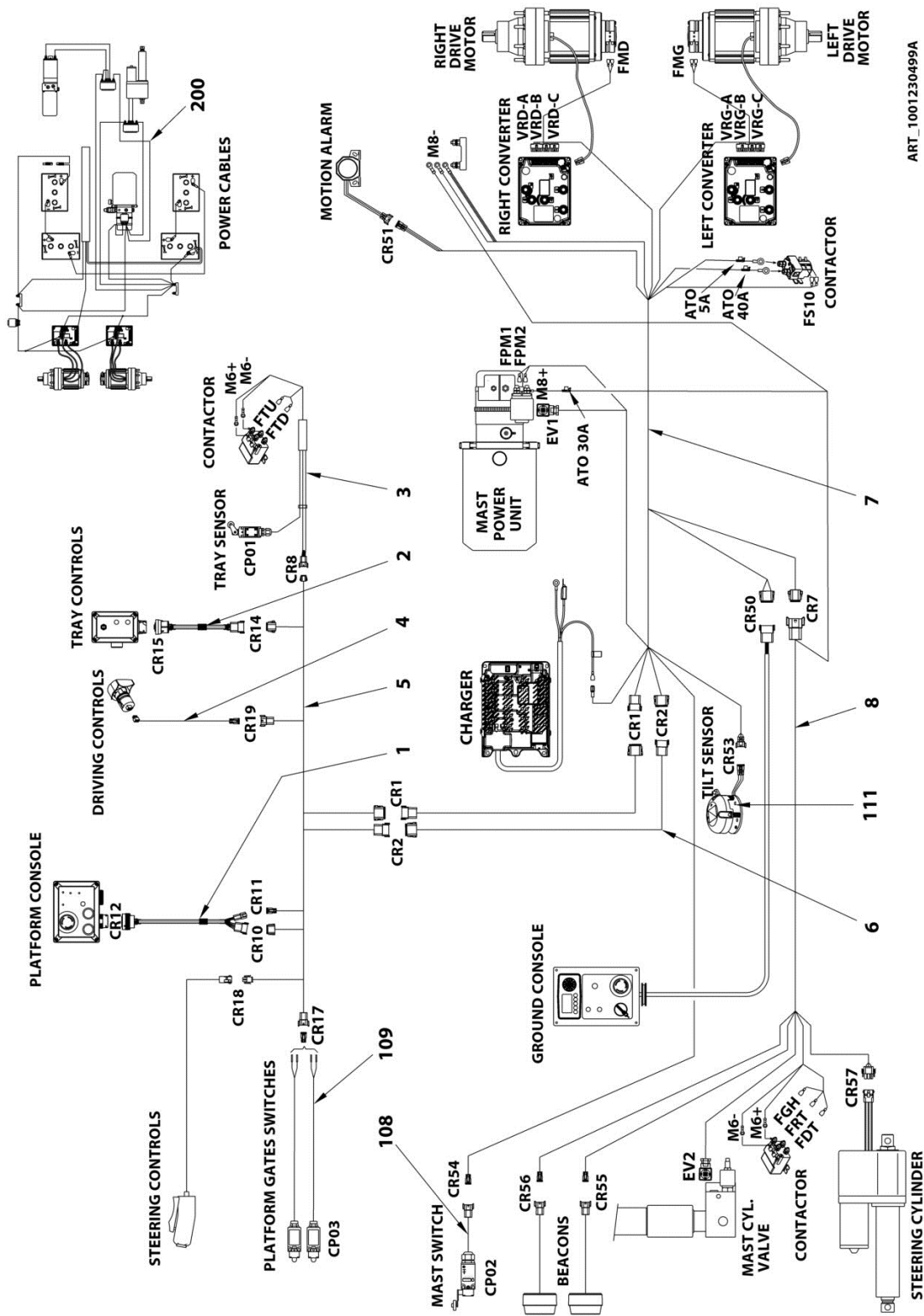


**SECTION 6 - ELECTRICAL INSTALL / INSTALLATION ELECTRIQUE**

**SECTION 6 - ELECTRICAL INSTALL / INSTALLATION ELECTRIQUE**

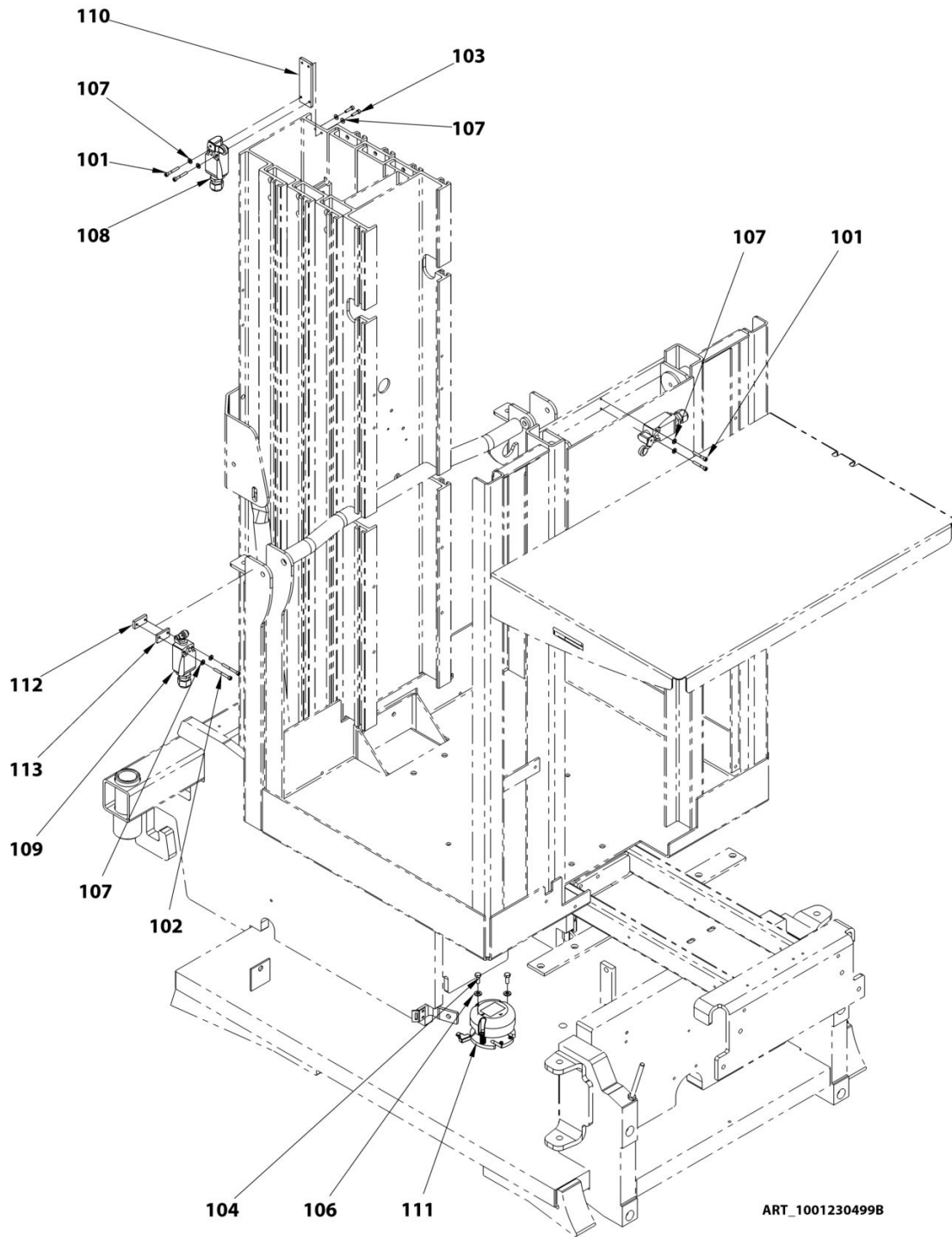
# SECTION 6 - ELECTRICAL INSTALL / INSTALLATION ELECTRIQUE

## FIGURE 6-1. CABLES INSTALL / INSTALLATION CABLES



ART\_1001230499A

# SECTION 6 - ELECTRICAL INSTALL / INSTALLATION ELECTRIQUE



ART\_1001230499B

## SECTION 6 - ELECTRICAL INSTALL / INSTALLATION ELECTRIQUE

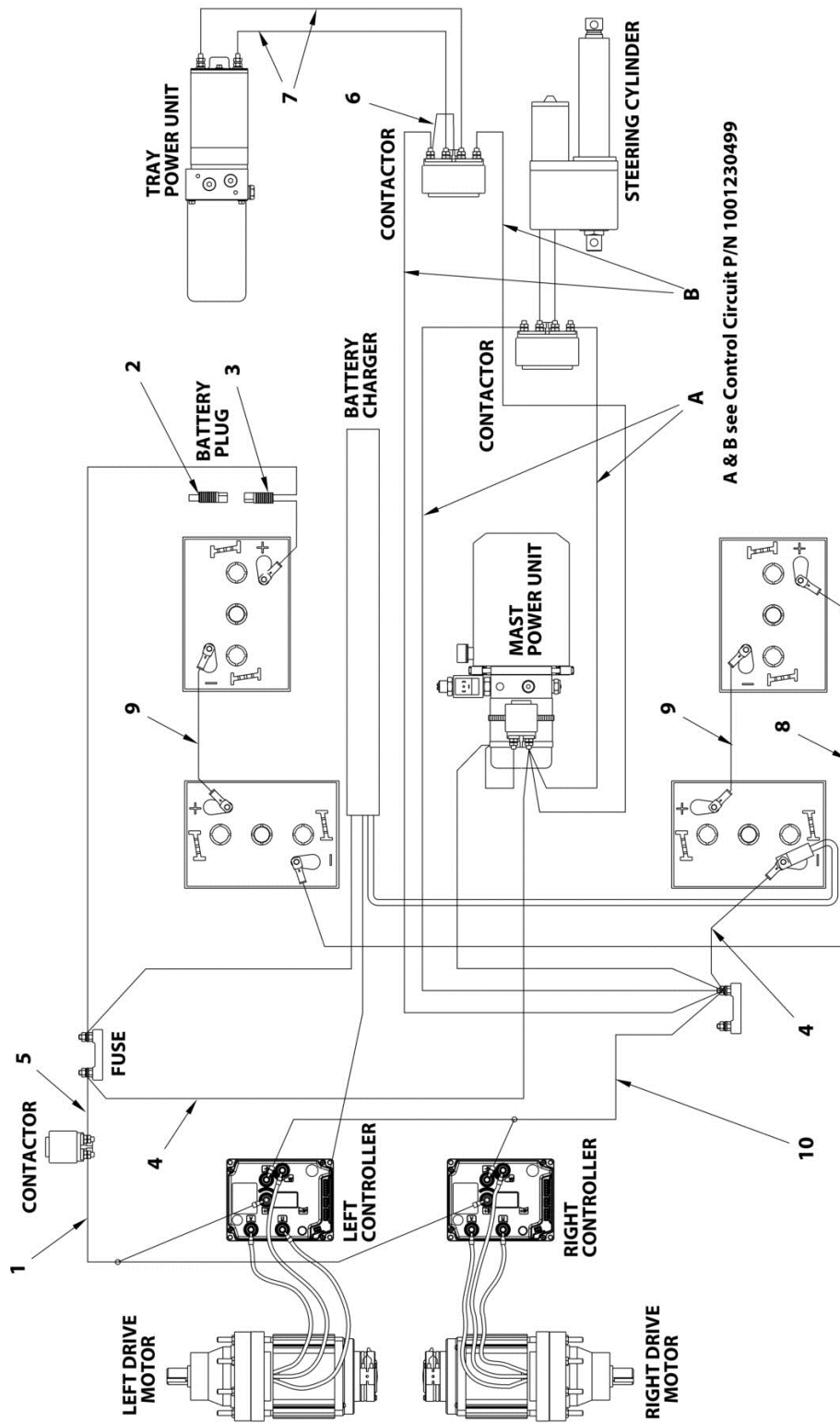
FIGURE 6-1. CABLES INSTALL / INSTALLATION CABLES

ITEM	PART NUMBER	QTY	DESCRIPTION	REV
	1001230499	Ref	<b>INSTALL CABLES / INSTALLATION CABLES</b>	
1	1001230492	1	HARNESS,UCB TO CONNEXIONS / FAISCEAU BOITIER HAUT A CONNECTIONS	
2	1001230493	1	HARNESS,TRAY TO CONNEXIONS / FAISCEAU TABLETTE A CONNECTIONS	
3	1001230494	1	HARNESS,INTO TRAY / FAISCEAU INTERNE TABLETTE	
4	1001230495	1	HARNESS,DRIVE TO CONNEXIONS / FAISCEAU ACCELERATEUR A CONNECTIONS	
5	1001230496	1	HARNESS,UPPER CONNEXIONS / FAISCEAU CONNECTIONS HAUTES	
6	1001230497	2	HARNESS,UPPER CONNEXIONS TO FRAME / FAISCEAU CHASSIS A CONNECTIONS HAUTES	
7	1001230498	1	HARNESS,FRAME CONNEXIONS / FAISCEAU CONNECTIONS CHASSIS	
8	1001230500	1	HARNESS,STEERING / FAISCEAU DIRECTION	
101	000007	4	M04x30 8.8 SOCKET HEAD CAPSCREW / VIS CHC M04x30 8.8 BI FP	
102	000032	4	M04x40 8.8 SOCKET HEAD CAPSCREW / VIS CHC M04x40 8.8 ZI FP	
103	000085	2	M04x16 8.8 SOCKET HEAD MACH SCREW / VIS CHC M04x16 8.8 BI FT	
104	100098	2	M06x16 8.8 HEX HEAD MACHINE SCREW / VIS H M06x16 8.8 BI FT	
105	110002	4	M05 GR. 8.8 LOCK NUT / ECROU FREIN M5 CL08 BI	
106	120009	2	LOCK WASHER D06x14 / RONDELLE CONTACT dD 06x14 BI	
107	120024	10	LOCK WASHER D04x10 / RONDELLE CONTACT M4 BI	
108	1001230501	1	HARNESS,MAST SWITCH / FAISCEAU CAPTEUR DE MAT	
109	1001230764	2	HARNESS,DOOR SWITCH / FAISCEAU CAPTEUR DE PORTE	
110	1001230974	1	PLATE,MAST SWITCH / PLATINE CAPTEUR DE MAT	
111	PC0478	1	SENSOR,TILT 1,9° / DETECTEUR DE DEVERS 1.9°	
112	ST1971	2	PLATE,LOCKING / CONTRE PLAQUE CAPTEUR	
113	ST3139	2	PLATE,SPACER / PLATINE ENTRETOISE	
200	1001231330	1	KIT,POWER CABLES / KIT FAISCEAUX DE PUISSANCE	



# SECTION 6 - ELECTRICAL INSTALL / INSTALLATION ELECTRIQUE

## FIGURE 6-2. KIT POWER CABLES / KIT CABLES DE PUISSANCE



ART\_1001231330



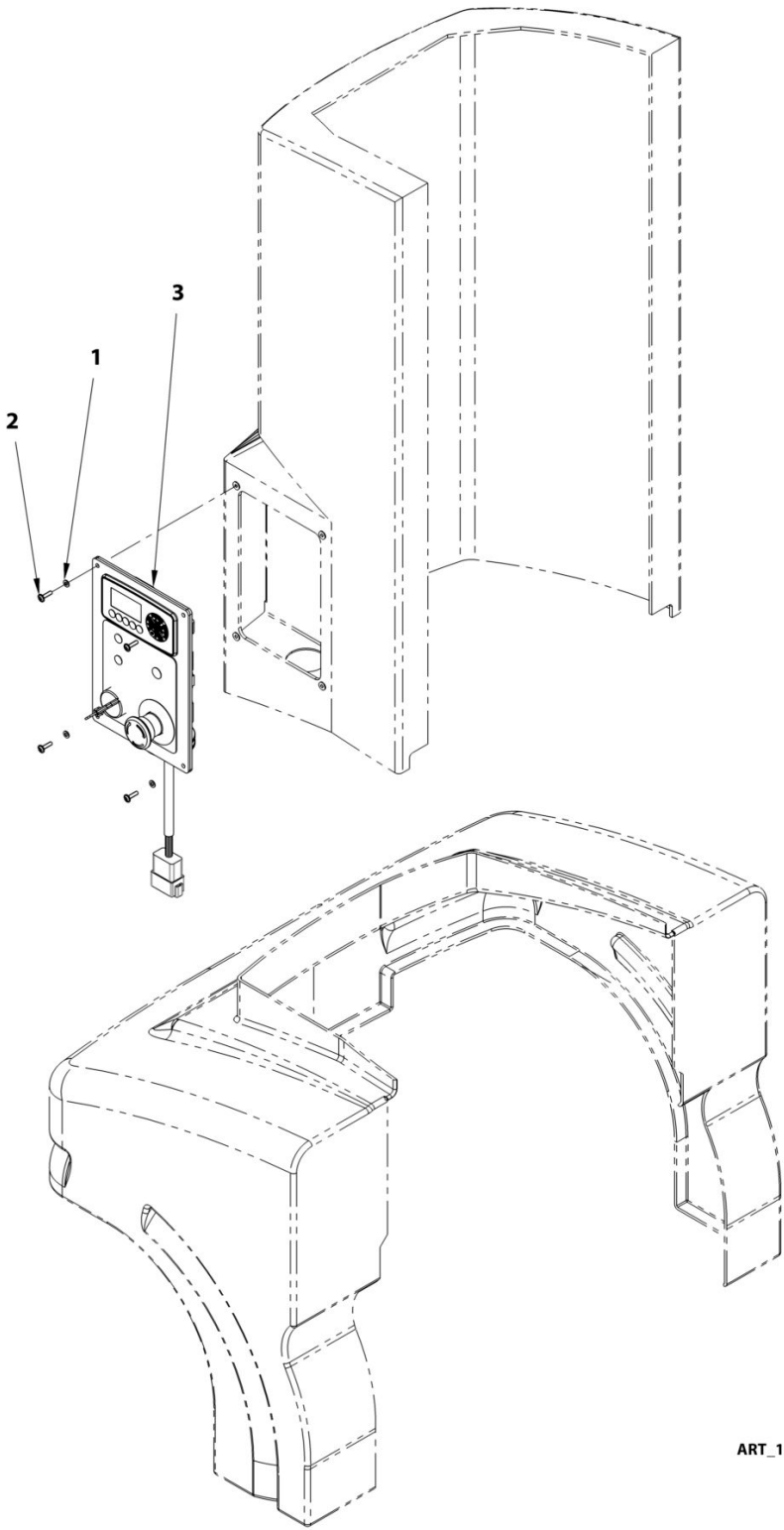
## SECTION 6 - ELECTRICAL INSTALL / INSTALLATION ELECTRIQUE

### FIGURE 6-2. KIT POWER CABLES / KIT CABLES DE PUISSANCE

ITEM	PART NUMBER	QTY	DESCRIPTION	REV
	1001231330		<b>KIT,POWER CABLES / KIT CABLES DE PUISSANCE</b>	
1	1001231603	1	HARNESS,PLUS CONTROLLERS / FAISCEAU PLUS VARIATEURS	
2	1001231604	1	HARNESS,BATTERY DISCONNECT / FAISCEAU DECONNECTION BATTERIE	
3	1001231605	1	HARNESS,BATTERY CONNECTOR / FAISCEAU CONNECTION BATTERIE	
4	PC0088	2	CABLE ASSEMBLY 16mm <sup>2</sup> L=900 / FAISCEAU CABLE 16mm <sup>2</sup> L=900	
5	PC0093	1	CABLE ASSEMBLY 16mm <sup>2</sup> L=250 / FAISCEAU CABLE 16mm <sup>2</sup> L=250	
6	PC0368	1	NEGATIVE BATTERY JUMPER / PONTAGE NEGATIF BATTERIE	
7	PC0372	2	CABLE ASSEMBLY 16mm <sup>2</sup> L=450 / FAISCEAU CABLE 16mm <sup>2</sup> L=450	
8	PC0472	1	CABLE ASSEMBLY 16mm <sup>2</sup> L=1575 / FAISCEAU CABLE 16mm <sup>2</sup> L=1575	
9	PC0473	2	CABLE ASSEMBLY 16mm <sup>2</sup> L=250 / FAISCEAU CABLE 16mm <sup>2</sup> L=250	
10	PC0541	1	HARNESS,NEGATIVE CONTROLLERS / FAISCEAU MOINS VARIATEURS	

**SECTION 6 - ELECTRICAL INSTALL / INSTALLATION ELECTRIQUE**

**FIGURE 6-3. MTB INSTALL / INSTALLATION BOITIER BAS**



ART\_1001228966

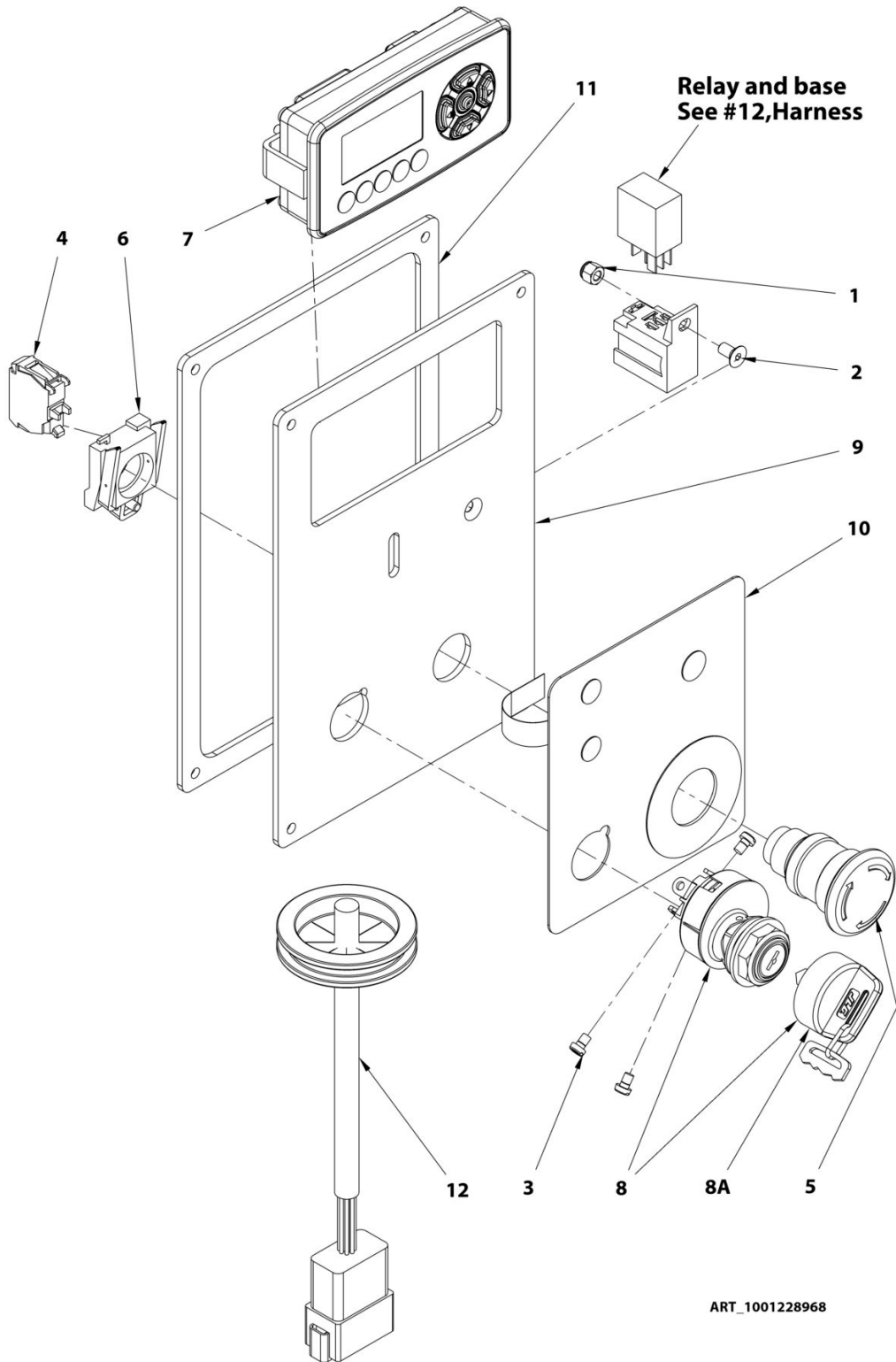
## SECTION 6 - ELECTRICAL INSTALL / INSTALLATION ELECTRIQUE

### FIGURE 6-3. MTB INSTALL / INSTALLATION BOITIER BAS

ITEM	PART NUMBER	QTY	DESCRIPTION	REV
	1001228966	Ref	<b>MTB INSTALL / INSTALLATION BOITIER BAS</b>	
1	120033	4	M04 PLASTIC WASHER / RONDELLE PLASTIQUE M4	
2	130062	4	M04x16 8.8 ROUND HEAD MACH SCREW / VIS BOMBEE ULF M4x16 8.8 FT	
3	1001228968	1	ELEC ASSY,GROUND CONTROL / ASSEMBLAGE BOITIER BAS	

# SECTION 6 - ELECTRICAL INSTALL / INSTALLATION ELECTRIQUE

## FIGURE 6-4. GROUND CONTROLS / BOITIER BAS



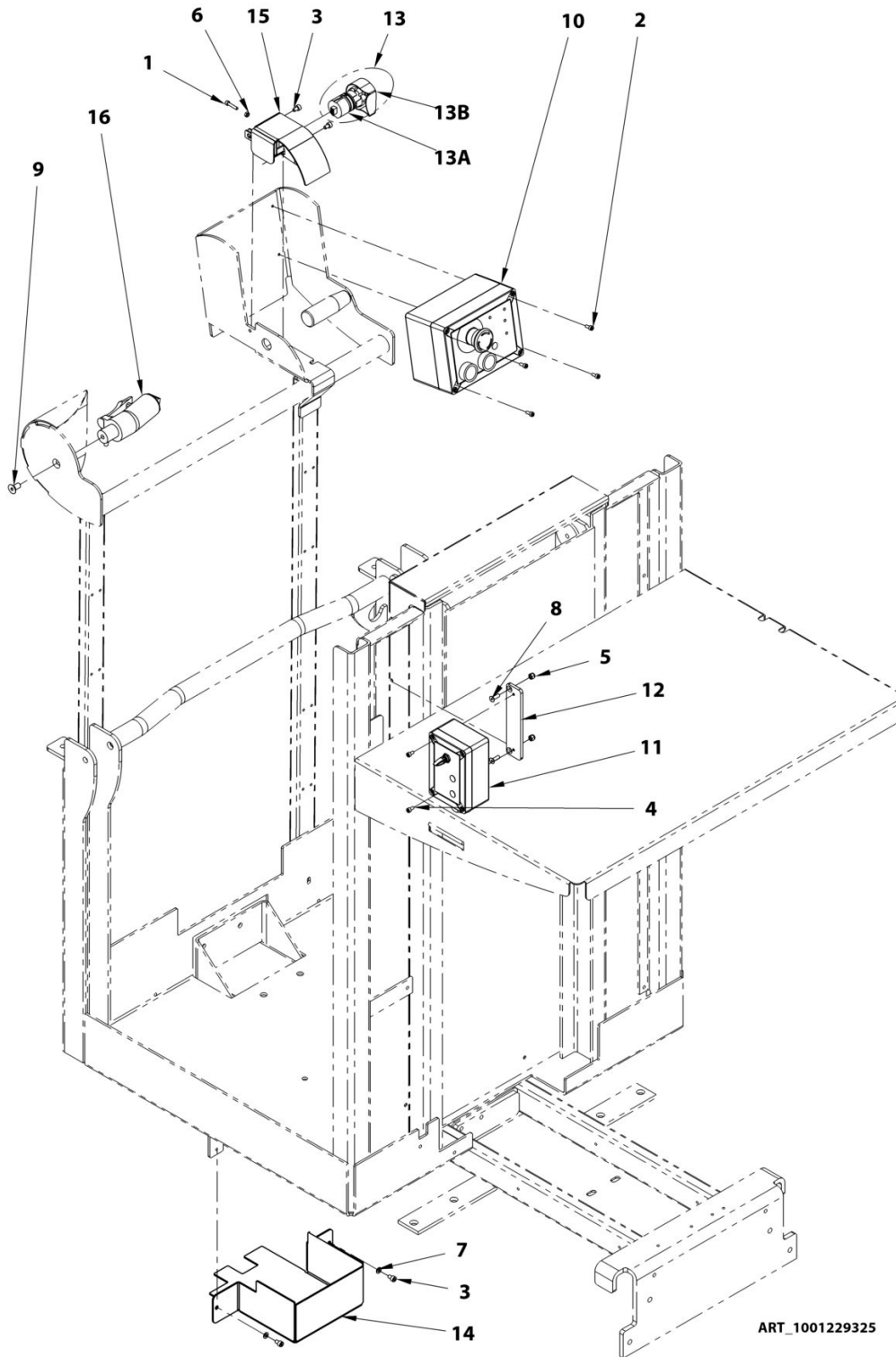
## SECTION 6 - ELECTRICAL INSTALL / INSTALLATION ELECTRIQUE

### FIGURE 6-4. GROUND CONTROLS / BOITIER BAS

ITEM	PART NUMBER	QTY	DESCRIPTION	REV
1	110002	1	M05 GR. 8.8 LOCK NUT / ECROU FREIN M5 CL8 BI	
2	130054	1	M05x10 10.9 COUNTERSUNK HEAD M SCR / VIS FHC M5x10 10.9 BI FT	
3	130059	3	M04x06 GR. 4.8 CYLINDRIC HEAD / VIS TC M04x06 4.8 ZI	
4	240057	1	NC CONTACT BLOCK / CONTACT NF	
5	240060	1	TURN TO RELEASE KNOB / BOUTON D'ARRET D'URGENCE 1/4 TOUR	
6	240076	1	CONTACT BLOCK HOLDER / EMBASE CONTACT	
7	1001231293	1	ECO SMART DASHBOARD / AFFICHEUR ECO SMART	
8	4360469	1	SWITCH,KEY ON/OFF/ON / SELECTEUR A CLE 3 POSITIONS	
8A	2860030	1	KEY (INCLUDED IN ITEM 4360469) / CLE (COMPRISE DANS REF 4360469)	
9	1001228969	1	PLATE,GROUND CONTROL / PLATINE BOITIER BAS	
10	1001228970	1	SWITCH,MEMBRANE PANEL / MEMBRANE A INTERRUPTEURS BOITIER BAS	
11	1001228971	1	SEAL,GROUND PANEL / JOINT BOITIER BAS	
12	1001230295	1	HARNESS,GROUND PANEL / FAISCEAU BOITIER BAS	

# SECTION 6 - ELECTRICAL INSTALL / INSTALLATION ELECTRIQUE

## FIGURE 6-5. PLATFORM CONTROLS / INSTALLATION COMMANDES HAUTES



ART\_1001229325

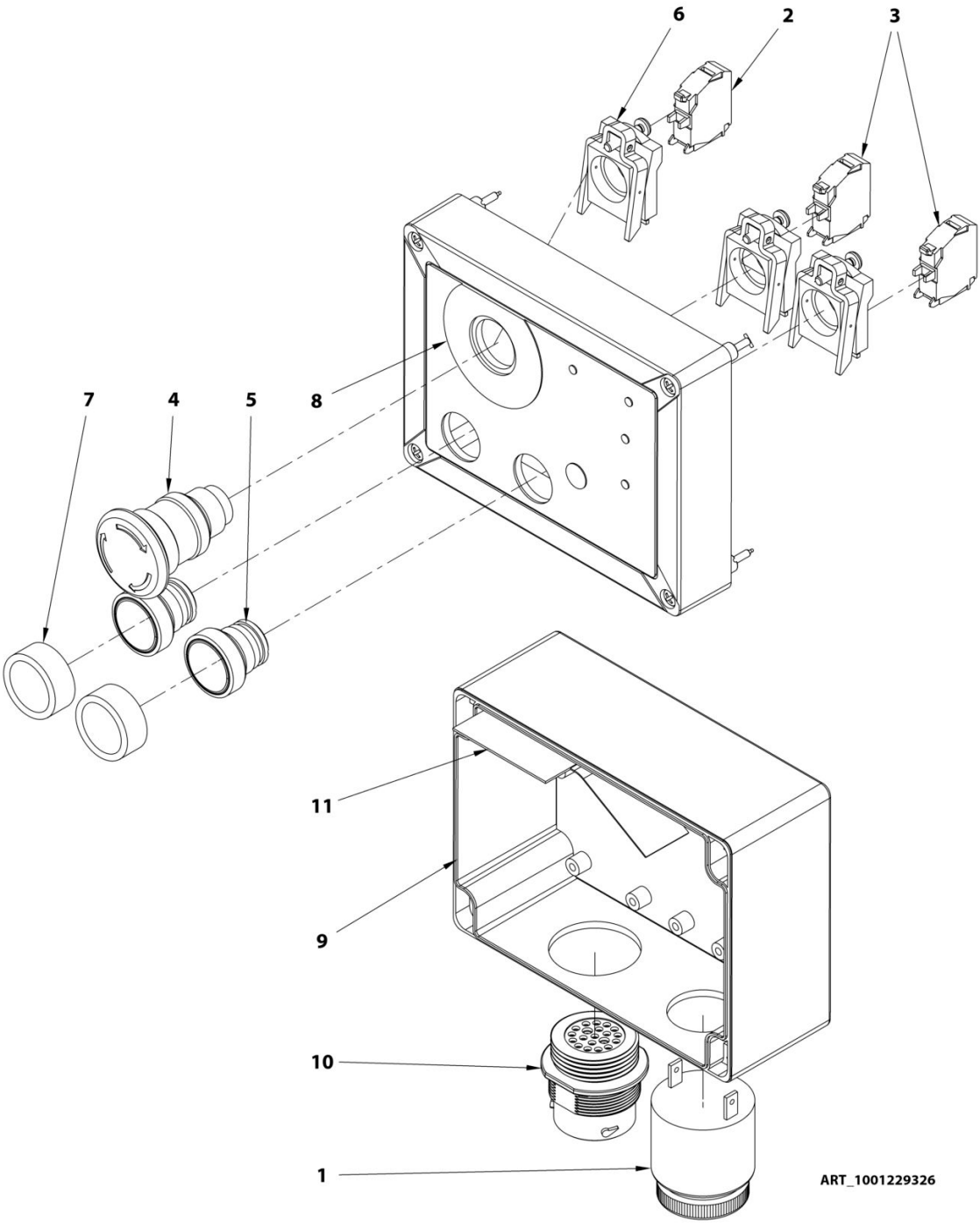
## SECTION 6 - ELECTRICAL INSTALL / INSTALLATION ELECTRIQUE

**FIGURE 6-5. PLATFORM CONTROLS / INSTALLATION COMMANDES HAUTES**

ITEM	PART NUMBER	QTY	DESCRIPTION	REV
	1001229325	Ref	<b>UPPER CONTROLS INSTALL / INSTALLATION COMMANDES HAUTES</b>	
1	000020	1	M04x20 8.8 SOCKET HEAD MACH SCREW / VIS CHC M04x20 8.8 BI FT	
2	000050	4	M04x10 8.8 SOCKET HEAD MACH SCREW / VIS CHC M04x10 8.8 BI FT	
3	000089	4	M05x08 8.8 SOCKET HEAD MACH SCREW / VIS CHC M05x08 8.8 BI FT	
4	000090	2	M04x08 8.8 SOCKET HEAD MACH SCREW / VIS CHC M04x08 8.8 BI FT	
5	110002	2	M05 GR. 8.8 LOCK NUT / ECROU FREIN M5 CL08 BI	
6	110021	1	M04 GR. 8.8 HEX NUT / ECROU H M04 CL08 BI	
7	120002	2	M05 WASHER / RONDELLE M05 BI	
8	130047	2	M5x16 8.8 COUNTERSUNK HEAD M SCR / VIS FHC M05x16 8.8 BI FT	
9	130053	1	M08x16 8.8 COUNTERSUNK HEAD M. S. / VIS FHC M08x16 8.8 BI FT	
10	1001229326	1	ELEC ASSY,UCB / BOITIER HAUT ASSEMBLE	
11	1001229327	1	ELEC ASSY,TRAY BOX / BOITIER TABLETTE ASSEMBLE	
12	1001230414	1	PLATE,SUPPORT TRAY BOX / PLATINE BOITIER TABLETTE	
13	1001230969	1	HARNESS,DRIVE JOYSTICK / ACCELERATEUR ASSEMBLE	
13A	1001232388	1	ACCELERATOR STIPO / ACCELERATEUR STIPO	
13B	1001232389	1	GREEN GRIP / ACTIONNEUR VERT	
14	1001230970	1	PLATE,CONNECTORS COVER / COUVERCLE CONNECTEURS	
15	1001232352	1	SUPPORT,DRIVE HANDLE / SUPPORT ACCELERATEUR	
16	1001234485	1	HARNESS,STEERING HANDLE / FAISCEAU JOYSTICK DIRECTION	

**SECTION 6 - ELECTRICAL INSTALL / INSTALLATION ELECTRIQUE**

**FIGURE 6-6. UPPER CONTROL BOX / BOITIER HAUT**



ART\_1001229326



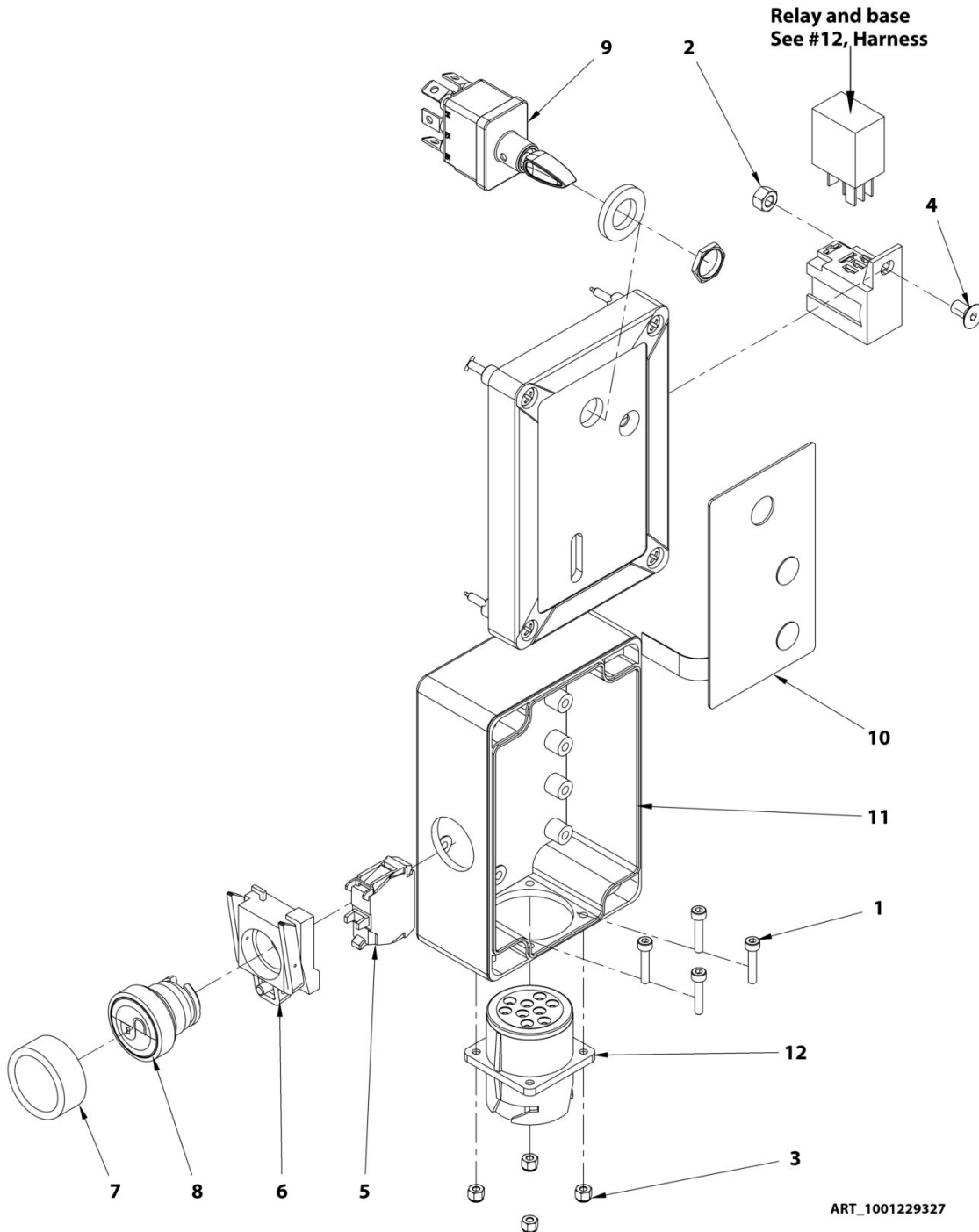
## SECTION 6 - ELECTRICAL INSTALL / INSTALLATION ELECTRIQUE

### FIGURE 6-6. UPPER CONTROL BOX / BOITIER HAUT

ITEM	PART NUMBER	QTY	DESCRIPTION	REV
	1001229326	Ref	<b>UPPER CONTROL BOX / BOITIER HAUT</b>	
1	0140011	1	AUDIBLE SIGNAL DEVICE / AVERTISSEUR SONORE	
2	240057	1	NC CONTACT / CONTACT NF	
3	240058	2	NO CONTACT / CONTACT NO	
4	240060	1	TURN TO RELEASE KNOB / BOUTON ARRET D'URGENCE	
5	240061	2	PUSH BUTTON / BOUTON POUSSOIR	
6	240076	3	CONTACT BLOCK HOLDER / EMBASE CONTACT	
7	240082	2	SWITCH,NEOPRENE BOOT / CAPUCHON D'ETANCHEITE	
8	1001229328	1	SWITCH, MEMBRANE PANEL UCB / INTERUPTEUR A MEMBRANE BOITIER HAUT	
9	1001230057	1	BOX, TG ABS 1612-9-A MACHINED / BOITIER TG ABS 1612-9-A PERCE	
10	1001230293	1	HARNESS,UCB / FAISCEAU BOITIER HAUT	
11	1001230757	1	DECAL, MEMBRANE WH RESISTORS / CARTE A RESISTANCES AUTOCOLLANTE	

# SECTION 6 - ELECTRICAL INSTALL / INSTALLATION ELECTRIQUE

## FIGURE 6-7. TRAY BOX / BOITIER TABLETTE



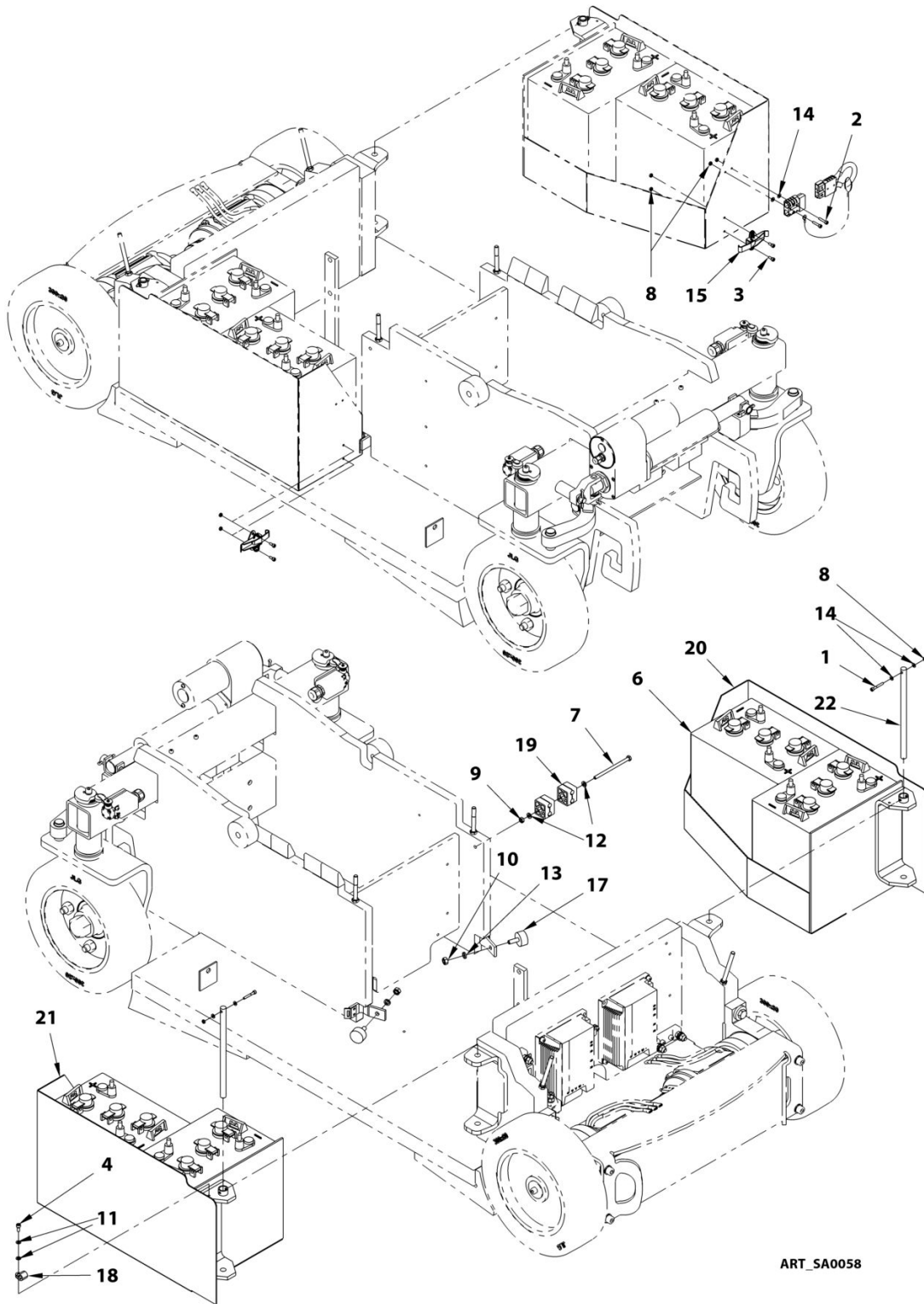
## SECTION 6 - ELECTRICAL INSTALL / INSTALLATION ELECTRIQUE

### FIGURE 6-7. TRAY BOX / BOITIER TABLETTE

ITEM	PART NUMBER	QTY	DESCRIPTION	REV
	1001229327	Ref	<b>TRAY BOX / BOITIER TABLETTE</b>	
1	000091	4	M03x16 8.8 SOCKET HEAD MACH SCREW / VIS CHC M03x16 8.8 BI FT	
2	110013	1	M05 GR. 8.8 HEX NUT / ECROU H M05 CL08 BI	
3	110024	4	M03 GR. 8.8 LOCK NUT / ECROU FREIN M03 CL08 BI	
4	130054	1	M05x10 10.9 COUNTERSUNK HEAD M SCR / VIS FHC M5x10 10.9 BI FT	
5	240058	1	NO CONTACT / CONTACT NO	
6	240076	1	CONTACT BLOCK HOLDER / EMBASE CONTACT	
7	240082	1	SWITCH,NEOPRENE BOOT / CAPUCHON D'ETANCHEITE	
8	1001115919	1	SWITCH,GREEN PUSH BUTTON,OPEN PAD LOCK / BP VERT DE VALIDATION	
9	1001227917	1	SWITCH,DPDT MOM-OFF-MOM TOGGLE / INTERUPTEUR A BASCULE RETOUR CENTRE	
10	1001229329	1	SWITCH,MEMBRANE PANEL TRAY / INTERUPTEUR A MEMBRANE BOITIER TABLETTE	
11	1001230056	1	BOX,TG ABS 1208-6-O MACHINED / BOITIER TG ABS 1208-6-O PERCE	
12	1001230294	1	HARNESS,TRAY BOX / FAISCEAU BOITIER TABLETTE	

# SECTION 6 - ELECTRICAL INSTALL / INSTALLATION ELECTRIQUE

## FIGURE 6-8. BATTERIES INSTALL / INSTALLATION BATTERIES



ART\_SA0058

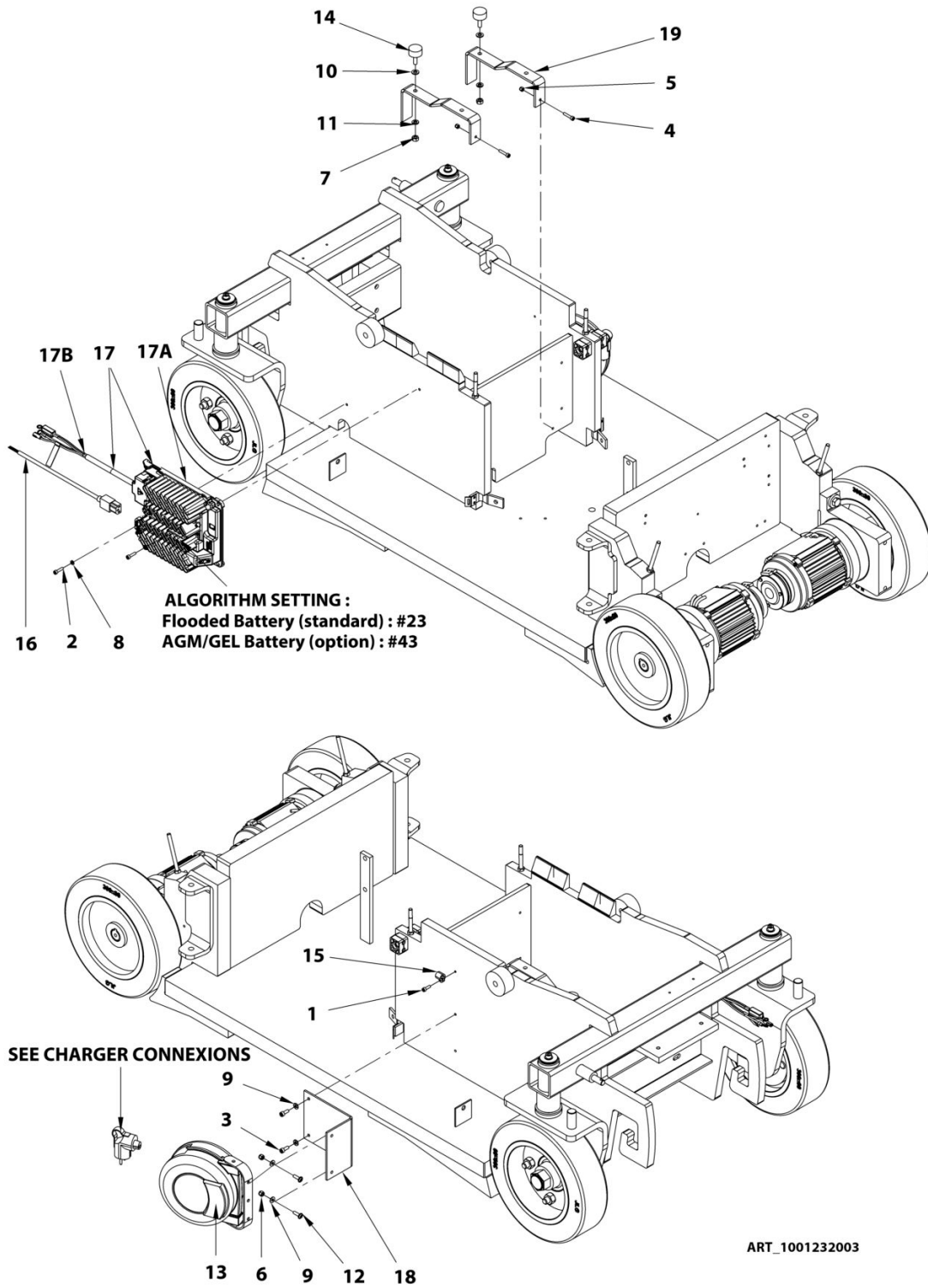
## SECTION 6 - ELECTRICAL INSTALL / INSTALLATION ELECTRIQUE

### FIGURE 6-8. BATTERIES INSTALL / INSTALLATION BATTERIES

ITEM	PART NUMBER	QTY	DESCRIPTION	REV
	SA0058	Ref	<b>BATTERIES INSTALL - STANDARD / INSTALLATION BATTERIES - STANDARD</b>	
	SA0149	Ref	<b>BATTERIES INSTALL - AGM / INSTALLATION BATTERIES - AGM</b>	
1	000007	2	M04x30 8.8 SOCKET HEAD CAPSCREW / VIS CHC M04x30 8.8 BI FP	
2	000020	2	M04x20 8.8 SOCKET HEAD MACH SCREW / VIS CHC M04x20 8.8 BI FT	
3	000050	4	M04x10 8.8 SOCKET HEAD MACH SCREW / VIS CHC M04x10 8.8 BI FT	
4	000067	1	M05x12 8.8 SOCKET HEAD MACH SCREW / VIS CHC M05x12 8.8 BI FT	
6	0400215	4	BATTERY 6V 180Ah - STANDARD / BATTERIE 6V 180Ah - STANDARD	
6	1001112112	4	BATTERY 6V 213Ah - AGM / BATTERIE 6V 213Ah - AGM	
7	100014	1	M06x80 8.8 HEX HEAD CAPSCREW / VIS H M06x80 8.8 BI FP	
8	110001	8	M04 GR. 8.8 LOCK NUT / ECROU FREIN M4 CL08 BI	
9	110003	1	M06 GR. 8.8 LOCK NUT / ECROU FREIN M6 CL08 BI	
10	110016	2	M08 GR. 8.8 HEX NUT / ECROU H M08 CL08 BI	
11	120002	2	M05 WASHER / RONDELLE M05 BI	
12	120009	2	LOCK WASHER D06x14 / RONDELLE CONTACT dD 06x14 BI	
13	120021	2	HELICAL SPRING LOCK WASHER D8 / RONDELLE GROWER D8 BI	
14	120024	6	LOCK WASHER D04x10 / RONDELLE CONTACT M4 BI	
15	190043	2	IRON LACK / GRENOUILLERE A BRAS RESSORT	
17	400015	2	BUMPER,DIA.30 / BUTEE ELASTIQUE D30	
18	400034	1	CLAMP D9 / COLLIER D9	
19	400037	2	CLAMP,TWIN 10-10 / COLLIER DOUBLE D10	
20	DL0557	1	RIGHT BATTERY HOUSING / CAISSON DE BATTERIE DROIT	
21	DL0558	1	LEFT BATTERY HOUSING / CAISSON DE BATTERIE GAUCHE	
22	US0362	2	PIN,BATTERY HOUSING / AXE CAISSON DE BATTERIES	

# SECTION 6 - ELECTRICAL INSTALL / INSTALLATION ELECTRIQUE

## FIGURE 6-9. CHARGER INSTALL / INSTALLATION CHARGEUR



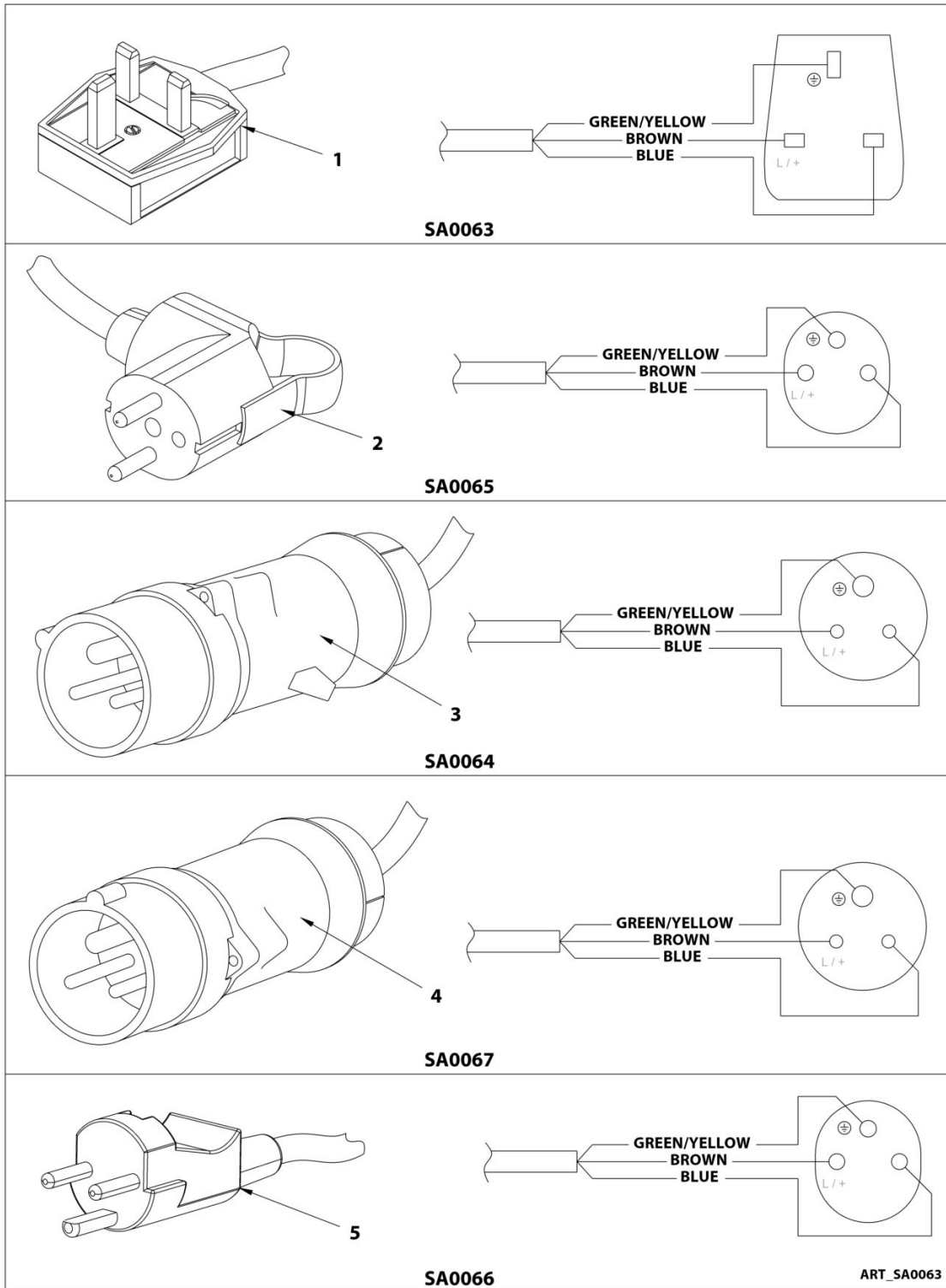
## SECTION 6 - ELECTRICAL INSTALL / INSTALLATION ELECTRIQUE

### FIGURE 6-9. CHARGER INSTALL / INSTALLATION CHARGEUR

ITEM	PART NUMBER	QTY	DESCRIPTION	REV
	1001232003	Ref	<b>CHARGER INSTALL / INSTALLATION CHARGEUR</b>	
1	000003	1	M05x16 8.8 SOCKET HEAD MACH SCREW / VIS CHC M05x16 8.8 BI FT	
2	000010	2	M05x20 8.8 SOCKET HEAD MACH SCREW / VIS CHC M05x20 8.8 BI FT	
3	000015	2	M06x16 8.8 SOCKET HEAD MACH SCREW / VIS CHC M06x16 8.8 BI FT	
4	000095	2	M05x25 8.8 SOCKET HEAD MACH SCREW / VIS CHC M05x25 8.8 BI FT	
5	110002	2	M05 GR. 8.8 LOCK NUT / ECROU FREIN M5 CL08 BI	
6	110003	2	M06 GR. 8.8 LOCK NUT / ECROU FREIN M6 CL08 BI	
7	110016	2	M08 GR. 8.8 HEX NUT / ECROU H M08 CL08 BI	
8	120002	2	M05 WASHER / RONDELLE M05 BI	
9	120009	4	LOCK WASHER D06x14 / RONDELLE CONTACT dD 06x14 BI	
10	120014	2	M08 WASHER / RONDELLE M08 BI	
11	120021	2	HELICAL SPRING LOCK WASHER Ø8 / RONDELLE GROWER D8 BI	
12	130021	2	M06x20 8.8 ROUND HEAD MACH SCREW / VIS BOMBEE ULF M06x20 8.8 BI FT	
13	260287	1	CABLE REAL / ENROULEUR	
14	400015	2	BUMPER,DIA.30 / BUTEE ELASTIQUE D30	
15	400034	1	CLAMP,D9 / COLLIER D9	
16	1060689	1	CABLE,AC CORD L=2m / CABLE CA CHARGEUR, SANS PRISE, L=2m	
17	1001231331	1	CHARGER,WITH HARNESS / CHARGEUR AVEC FAISCEAU	
17A	1001213033	1	CHARGER WITHOUT HARNESS / CHARGEUR AVEC FAISCEAU	
17B	1001231332	1	HARNESS,CHARGER / FAISCEAU CHARGEUR	
18	ST2800	1	CABLE REAL SUPPORT / SUPPORT ENROULEUR	
19	ST3122	2	CATCHES SUPPORT / SUPPORT BUTEES	

# SECTION 6 - ELECTRICAL INSTALL / INSTALLATION ELECTRIQUE

## FIGURE 6-10. CHARGER CONNECTORS / CONNECTEURS CHARGEUR





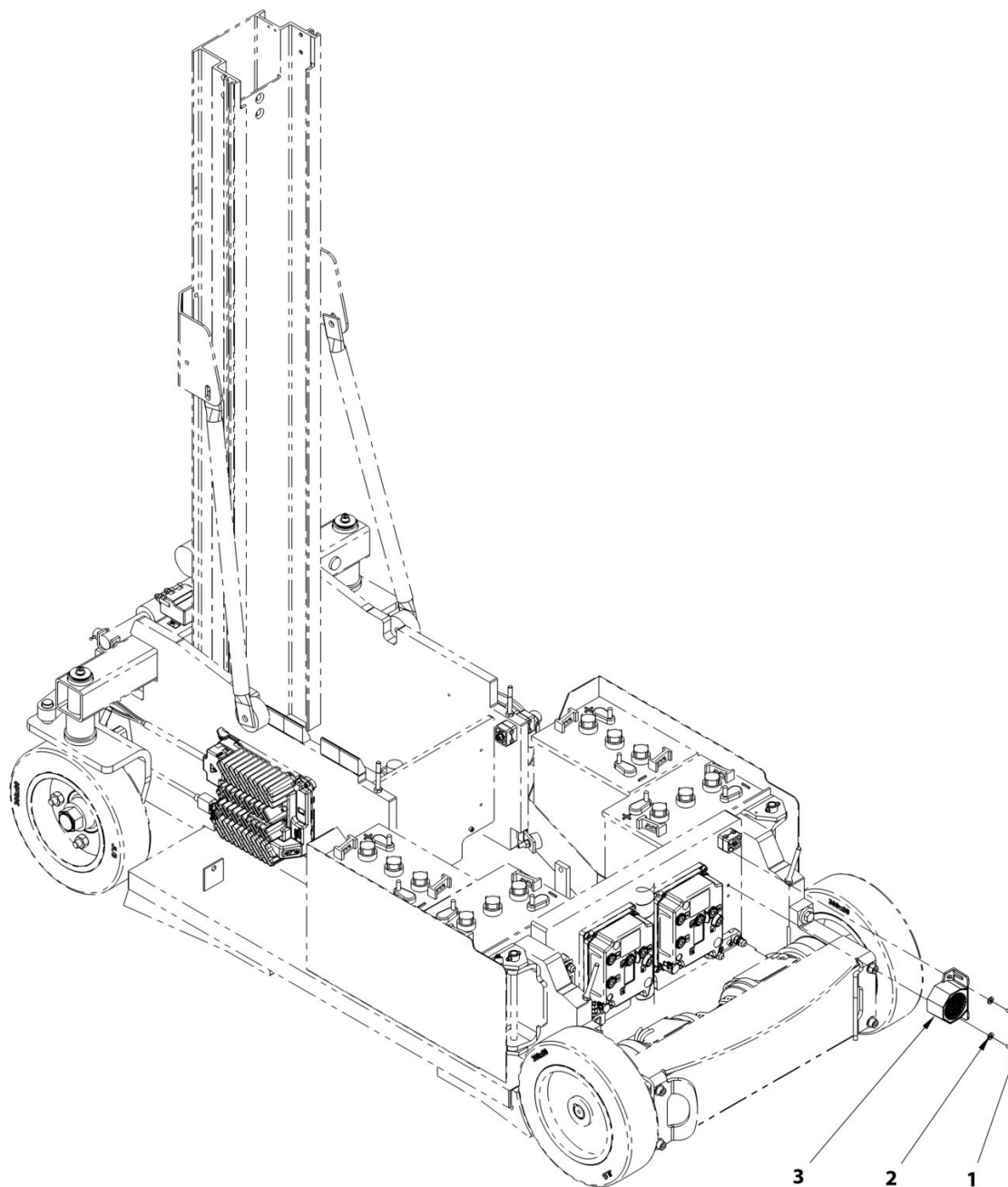
## SECTION 6 - ELECTRICAL INSTALL / INSTALLATION ELECTRIQUE

FIGURE 6-10. CHARGER CONNECTORS / CONNECTEURS CHARGEUR

ITEM	PART NUMBER	QTY	DESCRIPTION	REV
1	250117	1	UK 230 VAC MALE CONNECTOR / PRISE MALE 230VAC ROYAUME UNI	
2	260214	1	FRENCH AND GERMAN 230V CONNECTOR / PRISE 230V FRANCAISE ET ALLEMANDE	
3	4461196	1	CEI60309 YELLOW 115V CONNECTOR / PRISE 115V CEI60309 JAUNE	
4	4461199	1	CEI60309 BLUE 230V CONNECTOR / PRISE 230V CEI60309 BLEU	
5	4461249	1	250VAC MALE CEE7 KEYED / PRISE 250V CEE7 POLARISEE	

# SECTION 6 - ELECTRICAL INSTALL / INSTALLATION ELECTRIQUE

## FIGURE 6-11. MOTION ALARM / INSTALLATION ALARME DE MOUVEMENT



ART\_SA0056

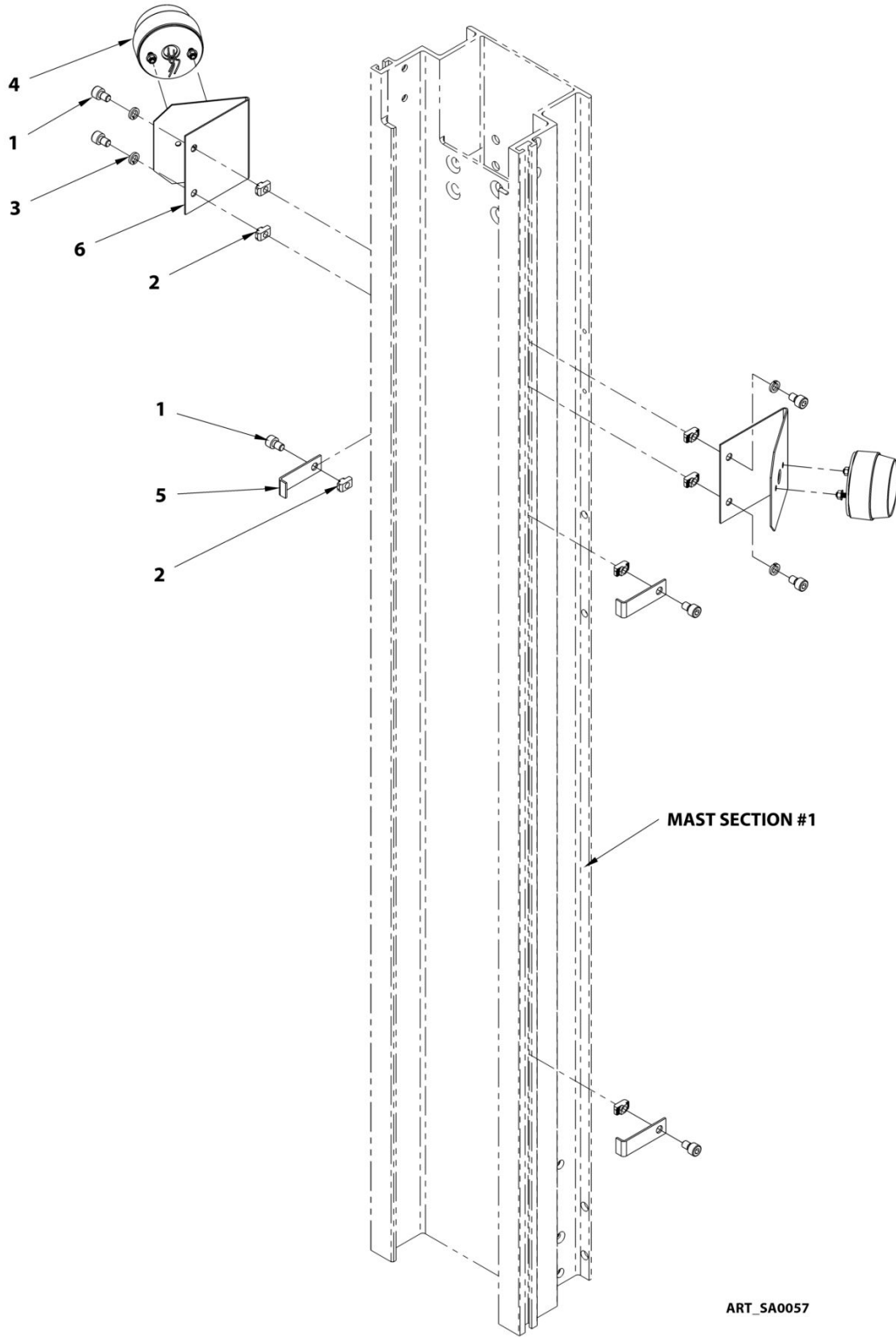
## SECTION 6 - ELECTRICAL INSTALL / INSTALLATION ELECTRIQUE

FIGURE 6-11. MOTION ALARM / INSTALLATION ALARME DE MOUVEMENT

ITEM	PART NUMBER	QTY	DESCRIPTION	REV
	SA0056	Ref	MOTION ALARM INSTALL / INSTALLATION ALARME DE MOUVEMENT	
1	000015	2	M06x16 8.8 SOCKET HEAD MACH SCREW / VIS CHC M06x16 8.8 BI FT	
2	120009	2	LOCK WASHER D06x14 / RONDELLE CONTACT dD 06x14 BI	
3	1001231972	1	HARNES,MOTION ALARM / FAISCEAU ALARME DE MOUVEMENT	

# SECTION 6 - ELECTRICAL INSTALL / INSTALLATION ELECTRIQUE

## FIGURE 6-12. BEACONS INSTALL / INSTALLATION FEUX A ECLATS



## SECTION 6 - ELECTRICAL INSTALL / INSTALLATION ELECTRIQUE

FIGURE 6-12. BEACONS INSTALL / INSTALLATION FEUX A ECLATS

ITEM	PART NUMBER	QTY	DESCRIPTION	REV
	SA0057	Ref	<b>BEACONS INSTALL / INSTALLATION FEUX A ECLATS</b>	
1	000059	7	M08x12 8.8 S SOCK HEAD MACH SCREW / VIS CHC M08x12 8.8 BI FT TETE BASSE	
2	110030	7	M08 RECTANGULAR BASE NUT / ECROU A EMBASE RECTANGULAIRE M08	
3	120021	4	HELICAL SPRING LOCK WASHER Ø8 / RONDELLE GROWER D8 BI	
4	PC0534	2	HARNESS, BEACON / FAISCEAU FEU A ECLATS	
5	ST1193	3	WIRE FIXATION / FIXATION CABLE	
6	ST2417	2	BRACKET, FLASHING LIGHT / SUPPORT FEU A ECLAT	

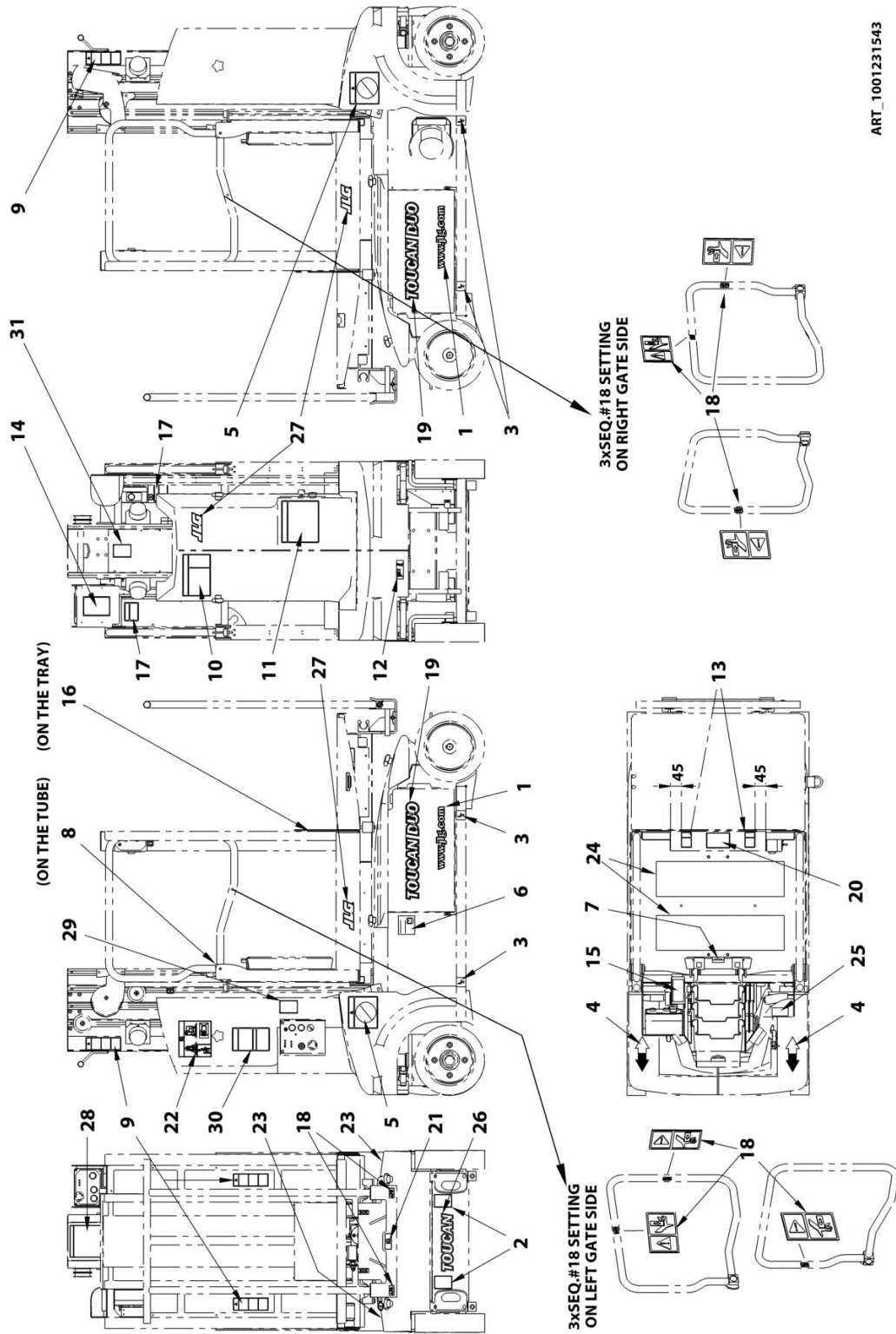


**SECTION 7 - DECALS INSTALL / INSTALLATION AUTOCOLLANTS**

**SECTION 7 - DECALS INSTALL / INSTALLATION AUTOCOLLANTS**

# SECTION 7 - DECALS INSTALL / INSTALLATION AUTOCOLLANTS

## FIGURE 7-1. DECALS INSTALL / INSTALLATION AUTOCOLLANTS



ART\_1001231543



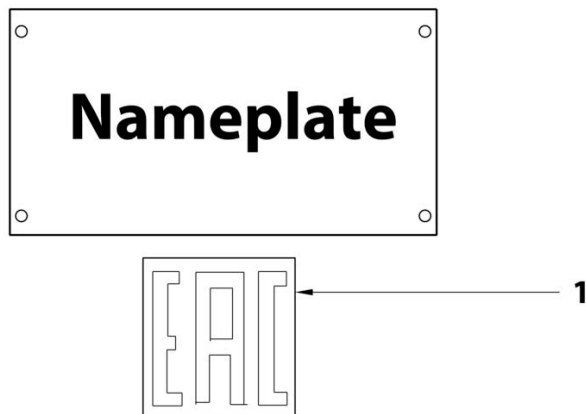
# SECTION 7 - DECALS INSTALL / INSTALLATION AUTOCOLLANTS

## FIGURE 7-1. DECALS INSTALL / INSTALLATION AUTOCOLLANTS

ITEM	PART NUMBER	QTY	DESCRIPTION	REV
	1001230960	Ref	<b>DECALS,DUO / AUTOCOLLANTS DUO</b>	
1	1704885	2	WWW.JLG.COM DECAL / AUTOCOLLANT WWW.JLG.COM	
2	1703814	2	DECAL,TIE DOWN / AUTOCOLLANT, ARRIMAGE	
3	AU0050	4	DECAL, FORK POSITION / AUTOCOLLANT PRISE FOURCHE	
4	AU0149	2	DECAL REP DRIVE DIRECTION / AUTOCOLLANT SENS MARCHE	
5	AU0258	2	DECAL KARCHER / AUTOCOLLANT KARCHER	
6	AU0575	1	DECAL RESERVOIR / AUTOCOLLANT RESERVOIR	
7	1701640	1	DECAL,MANUAL / AUTOCOLLANT MANUEL	
8	AU0871	1	DECAL,WEAR BODY HARNESS / AUTOCOLLANT HARNAIS DE SECURITE	
9	AU0918	4	DECAL,CRUSHING HAZARD / AUTOCOLLANT RISQUE ECRASEMENTS	
10	AU0934	1	DECAL,DANGER / AUTOCOLLANT DANGER	
11	AU0936	1	DECAL,FORK INSERT / AUTOCOLLANT INSERTIONS FOURCHES	
12	AU0947	1	DECAL,MANUAL VALVE / AUTOCOLLANT VANNE MANUELLE	
13	AU1741	2	DECAL,HAND CRUSHING HAZARD / AUTOCOLLANT ECRASEMENT MAINS	
14	1702631	1	DECAL,BAR CODE / AUTOCOLLANT CODE BARRE	
15	AU1748	1	DECAL,DRIVE / AUTOCOLLANT TRANSLATION	
16	AU1749	1	DECAL,TRAY BAN / AUTOCOLLANT INTERDICTION TABLETTE	
17	AU1753	2	DECAL,LOAD TRANSFERT / AUTOCOLLANT TRANSFERT DE CHARGE	
18	AU1776	8	DECAL,HAND CRUSHING HAZARD / AUTOCOLLANT RISQUE D'ECRASEMENT MAIN	
19	AU1808	2	DECAL,TOUCAN DUO JLG DESIGN / AUTOCOLLANT TOUCAN DUO CHARTE JLG	
20	AU1971	1	DECAL,TRAY TRAP USE / AUTOCOLLANT UTILISATION SANGLE TABLETTE	
21	AU1972	1	DECAL,SEE MANUAL / AUTOCOLLANT CONSULTER MANUEL	
22	AU1990	1	DECAL,TRANSPORT INSTRUCTIONS / AUTOCOLLANT INSTRUCTIONS DE TRANSPORT	
23	AU2058	2	ADHESIVE ANTI-SKID BAND (150x350) / BANDE ADHESIVE ANTIDERAPANTE (150x350)	
24	AU2062	2	ADHESIVE ANTI-SKID BAND (150x600) / BANDE ADHESIVE ANTIDERAPANTE (150x600)	
25	AU2111	1	DECAL,STEERING CONTROL / AUTOCOLLANT COMMANDE DIRECTION	
28	1001230959	1	DECAL,CAPACITY W/TRAY / AUTOCOLLANT CAPACITE TABLETTE	
29	1001230958	1	DECAL,WHEEL LOAD / AUTOCOLLANT CHARGE SUR ROUE	
30	1001230957	1	DECAL,EMERGENCY LOWERING / AUTOCOLLANT DESCENTE DE SECOUR	
31	1703811	1	DECAL,LIFTING LUG / AUTOCOLLANT, ANNEAU DE LEVAGE	
	PA1089	Ref	<b>CHART,LOGOS DECALS / TABLEAU AUTOCOLLANTS LOGOS</b>	
26	AU1828	1	DECAL,TOUCAN / AUTOCOLLANT TOUCAN	
27	1703177	3	DECAL,JLG / AUTOCOLLANT JLG	

# SECTION 7 - DECALS INSTALL / INSTALLATION AUTOCOLLANTS

FIGURE 7-2. DECAL EAC (RUSSIA,CIS) INSTALL / INSTALLATION AUTOCOLLANT EAC



ART\_1001214029

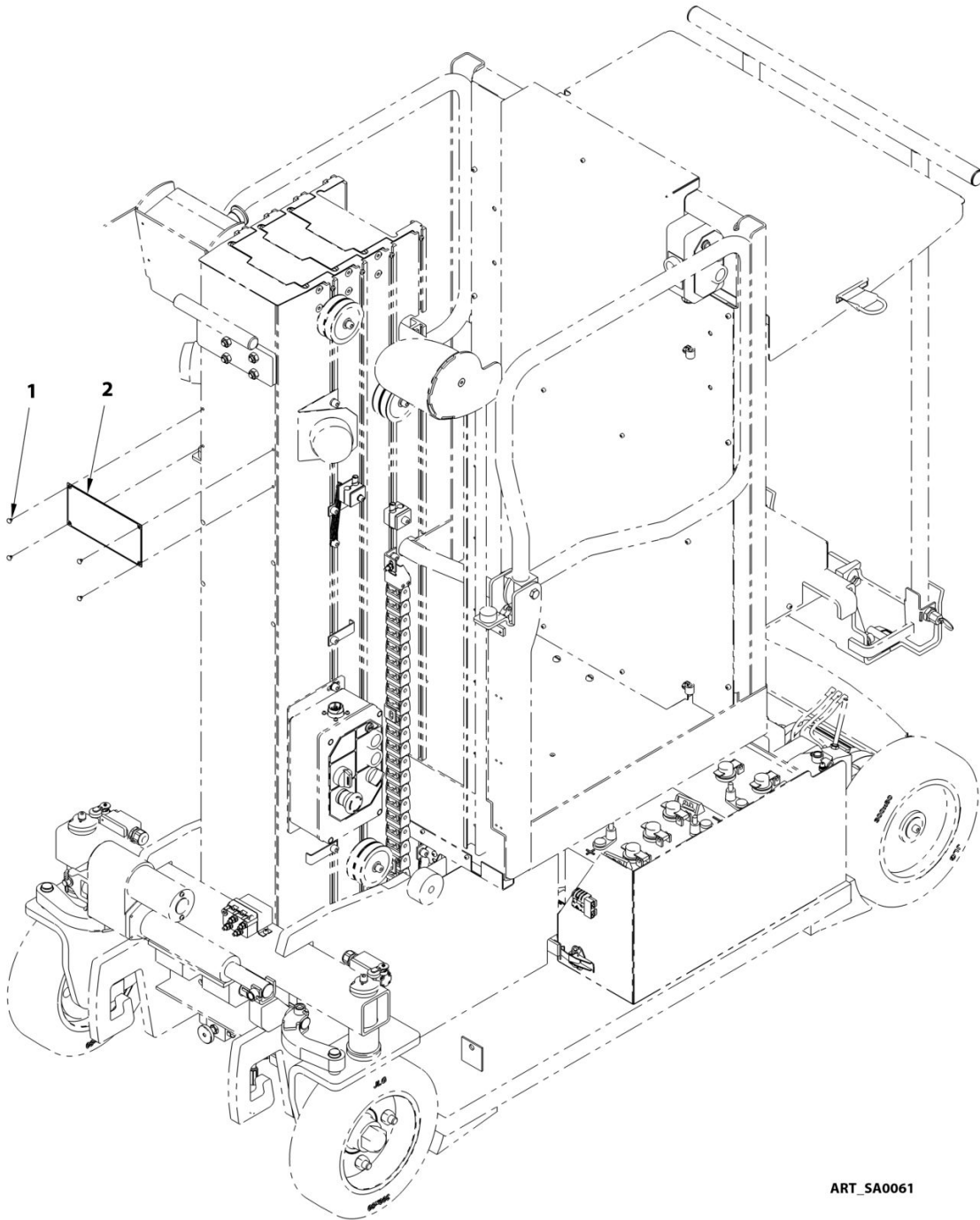
## SECTION 7 - DECALS INSTALL / INSTALLATION AUTOCOLLANTS

FIGURE 7-2. DECAL EAC (RUSSIA,CIS) INSTALL / INSTALLATION AUTOCOLLANT EAC

ITEM	PART NUMBER	QTY	DESCRIPTION	REV
	1001214029	Ref	INSTALL,DECAL,EAC (RUSSIA,CIS) / INSTALLATION AUTOCOLLANT EAS (RUSSIE, CIS DECAL,EAC / AUTOCOLLANT EAC	
1	1001173703	1		

# SECTION 7 - DECALS INSTALL / INSTALLATION AUTOCOLLANTS

## FIGURE 7-3. NAME PLATE INSTALL / INSTALLATION PLAQUE CONSTRUCTEUR



ART\_SA0061

## SECTION 7 - DECALS INSTALL / INSTALLATION AUTOCOLLANTS

FIGURE 7-3. NAME PLATE INSTALL / INSTALLATION PLAQUE CONSTRUCTEUR

ITEM	PART NUMBER	QTY	DESCRIPTION	REV
	SA0061	Ref	<b>NAME PLATE INSTALL / INSTALLATION PLAQUE CONSTRUCTEUR</b>	
1	140017	4	NAIL D5 L6 / CLOU D5 L6	
2		Ref	MANUFACTURER'S NAME PLATE / PLAQUE CONSTRUCTEUR	



**SECTION 8 - RECOMMENDED PARTS LIST / LISTE DES PIÈCES  
RECOMMANDÉES**

**SECTION 8 - RECOMMENDED PARTS LIST / LISTE DES PIÈCES  
RECOMMANDÉES**

## SECTION 8 - RECOMMENDED PARTS LIST / LISTE DES PIÈCES RECOMMANDÉES

FIGURE 8-1. RECOMMENDED PARTS LIST / LISTE DE PIÈCES RECOMMANDÉES

ITEM	PART NUMBER	QTY	DESCRIPTION	REV
	Note	Ref	<b>The following list will service one Machine with emergency repair parts which can be installed in the field. Parts from the list should be replaced when inventory is depleted to keep service parts stock supplied. For further information, contact your JLG Industries Parts Department. / La liste suivante indique (pour une Machine) les pièces de réparation d'urgence qui peuvent être installées sur le terrain. La quantité de pièces de cette liste doit être tenue en stock minimum. Pour de plus amples informations, contactez votre SAV JLG Industries.</b>	
		Ref	<b>STANDARD PARTS / PIÈCES STANDARD</b>	
	240057	1	NC CONTACT / CONTACT NF	
	240058	1	NO CONTACT / CONTACT NO	
	240060	1	EMERGENCY STOP SWITCH / BOUTON ARRÊT D'URGENCE	
	240061	1	PUSH BUTTON / BOUTON POUSSOIR	
	260208	1	RELAY, POWER / RELAIS DE PUISSANCE	
	260269	1	RELAY, REVERSING / RELAIS INVERSEUR	
	260324	1	SWITCH, DOOR / CAPTEUR PORTE	
	260325	1	SWITCH, LEVER / CAPTEUR À LEVIER	
	950110	1	POWER FUSE 63A / FUSIBLE PUISSANCE 63A	
	970033	1	BREATHING CAP / BOUCHON RENIFLAR	
	4360469	1	3 POSITION KEY SELECTOR / SELECTEUR À CLE 3 POSITIONS	
	2860030	1	KEY (INCLUDED IN ITEM 4360469) / CLE (COMPRIS DANS REF 4360469)	
	8229242	1	MINI ATO FUSE 5A / FUSIBLE MINI ATO 5A	
	1001227917	1	TOGGLE SWITCH / INTERRUPTEUR À BASCULE	
		Ref	<b>VARIABLE PARTS / AUTRES PIÈCES</b>	
	970038	1	HOLDING VALVE / ELECTROVANNE	
	1001228970	1	SWITCH, MEMBRANE LOWER PANEL / MEMBRANE À INTERRUPTEURS BOITIER BAS	
	1001229328	1	SWITCH, MEMBRANE PANEL UCB / MEMBRANE À INTERRUPTEURS BOITIER HAUT	
	1001229329	1	SWITCH, MEMBRANE PANEL TRAY / MEMBRANE À INTERRUPTEURS BOITIER TABLETTE	
	1001231293	1	ECO SMART DASHBOARD / AFFICHEUR ECO SMART	
	1001231427	1	CONTROL, ACEX 24VDC / VARIATEUR ACEX 24VDC	
	1001232388	1	ACCELERATOR / ACCELERATEUR	
	1001232389	1	GREEN GRIP FOR ACCELERATOR / POIGNÉE VERTE POUR ACCELERATEUR	
	1001234485	1	HARNESS, STEERING HANDLE / FAISCEAU POIGNÉE DIRECTION	
	PC0478	1	SENSOR, TILT 1,9° / DETECTEUR DE DEVERS 1,9°	
	US0360	1	PULLEY / POULIE	



**PART NUMBER INDEX**

# PART NUMBER INDEX

000003.....33, 35, 63	1001230493.....46	120021 14, 22, 29, 33, 61, 63, 69	300025.....39
000005.....14, 15, 35	1001230494.....46	120024.....46, 61	300034.....27, 39
000006.....22	1001230495.....46	120026.....14	300037.....39
000007.....46, 61	1001230496.....46	120028.....22	300075.....39
000008.....14	1001230497.....46	120033.....51	300099.....39
000010.....63	1001230498.....46	130003.....22	300108.....39
000011.....14	1001230499.....46	130007.....9	310102.....27
000013.....14, 35	1001230500.....46	130009.....22	320064.....39
000015.....63, 67	1001230501.....46	130013.....33	400010.....15
000018.....14, 15, 22, 39	1001230502.....15	130021.....9, 29, 33, 63	400012.....29
000019.....22	1001230757.....57	130025.....22	400015.....33, 61, 63
000020.....55, 61	1001230764.....46	130028.....22	400034. 15, 33, 35, 61, 63
000030.....35	1001230957.....73	130029.....22	400037.....15, 29, 61
000032.....46	1001230958.....73	130030.....22, 33	400048.....35
000035.....22	1001230959.....73	130031.....22	400062.....35
000043.....22, 29	1001230960.....73	130032.....22	400080.....29
000050.....55, 61	1001230969.....55	130033.....22	400081.....9
000053.....22, 35, 39	1001230970.....55	130047.....23, 55	400089.....33
000057.....22	1001230974.....46	130050.....27	400095.....9
000058.....22	1001231293.....53, 80	130053.....55	4240147.....15
000059.....9, 22, 29, 69	1001231328.....15	130054.....53, 59	4360469.....53, 80
000063.....35	1001231330.....46, 49	130056.....35	4461196.....65
000067.....14, 33, 35, 61	1001231331.....63	130059.....53	4461199.....65
000073.....35	1001231332.....63	130062.....51	4461249.....65
000076.....29	1001231380.....14	140017.....77	520099.....39, 41
000078.....22, 29	1001231427.....15, 80	140018.....15	520121.....39
000085.....33, 46	1001231430.....14	140019.....14	8229242.....80
000089.....33, 35, 55	1001231431.....14	150022.....14	8990147.....23
000090.....55	1001231602.....24	150025.....14	900172.....27
000091.....59	1001231603.....49	150028.....22, 35	920076.....14
000095.....63	1001231604.....49	150029.....14	920077.....14
0140011.....57	1001231605.....49	150056.....35	950110.....15, 80
0400215.....61	1001231972.....67	150057.....35	951042.....15
100014.....61	1001232003.....63	150060.....14	952167.....14
100035.....14	1001232352.....55	160022.....22	952169.....14
100039.....35	1001232388.....55, 80	160024.....29	960100.....35
100076.....22	1001232389.....55, 80	170004.....22	970001.....27
100091.....33	1001234485.....55, 80	1701640.....73	970019.....27
100098.....46	1060689.....63	1702631.....73	970022.....27
1001112112.....61	110001.....33, 61	1703177.....73	970030.....27
1001115919.....59	110002 23, 33, 35, 46, 53, 55, 63	1703811.....73	970033.....41, 80
1001173703.....75	110003 22, 29, 33, 35, 61, 63	1703814.....73	970037.....41
1001210422.....15	110004.....14, 22, 35	1704885.....73	970038.....27, 80
1001213033.....63	110005.....22, 33, 35	190028.....35	970044.....41
1001214029.....75	110008.....35	190036.....41	970045.....27
1001214759.....14	110011.....22	190043.....61	970046.....27
1001214993.....14	110013.....59	190044.....9	970047.....27
1001227917.....59, 80	110014.....22	190074.....35	970052.....27
1001228966.....51	110015.....29	190076.....35	970056.....27
1001228967.....9	110016.....33, 61, 63	240057.....53, 57, 80	970058.....41
1001228968.....51	110021.....55	240058.....57, 59, 80	970059.....41
1001228969.....53	110022.....35	240060.....53, 57, 80	970062.....41
1001228970.....53, 80	110024.....59	240061.....57, 80	970063.....41
1001228971.....53	110026.....9	240076.....53, 57, 59	970064.....41
1001229325.....55	110030.....22, 29, 69	240082.....57, 59	970066.....41
1001229326.....55, 57	120002.....55, 61, 63	250117.....65	970067.....41
1001229327.....55, 59	120004.....15, 29	260077.....15	970068.....41
1001229328.....57, 80	120009 15, 29, 33, 35, 46, 61, 63, 67	260208.....15, 80	970069.....41
1001229329.....59, 80	120010 14, 15, 22, 29, 35, 39	260214.....65	970070.....41
1001230056.....59	120011.....15, 22	260269.....35, 80	970071.....41
1001230057.....57	120014.....22, 29, 35, 63	260287.....63	970072.....41
1001230293.....57	120015.....22	260324.....80	AU0050.....73
1001230294.....59		260325.....80	AU0149.....73
1001230295.....53		2860030.....53, 80	AU0258.....73
1001230414.....55		300001.....39	AU0575.....73
1001230492.....46		300004.....39	AU0871.....73

## PART NUMBER INDEX

AU0918.....	73	DL0764.....	35	ST1115.....	23	ST3063.....	9
AU0934.....	73	DL0792.....	15	ST1117.....	23	ST3082.....	33
AU0936.....	73	DL0910.....	35	ST1118.....	23	ST3122.....	63
AU0947.....	73	PA1089.....	73	ST1119.....	23	ST3139.....	46
AU1741.....	73	PC0088.....	49	ST1120.....	29	ST3695.....	29
AU1748.....	73	PC0093.....	49	ST1125.....	23	US0134.....	14
AU1749.....	73	PC0368.....	49	ST1146.....	9	US0190.....	14
AU1753.....	73	PC0372.....	49	ST1147.....	9	US0277.....	23
AU1776.....	73	PC0472.....	49	ST1148.....	9	US0278.....	23
AU1808.....	73	PC0473.....	49	ST1149.....	9	US0279.....	23
AU1828.....	73	PC0478.....	46, 80	ST1193.....	29, 69	US0280.....	23
AU1971.....	73	PC0534.....	69	ST1625.....	23	US0281.....	23
AU1972.....	73	PC0541.....	49	ST1627.....	23	US0282.....	23
AU1990.....	73	SA0043.....	39	ST1628.....	23, 27	US0283.....	23
AU2058.....	73	SA0044.....	29	ST1629.....	23	US0284.....	23
AU2062.....	73	SA0045.....	22	ST1630.....	23	US0285.....	23
AU2111.....	73	SA0046.....	33	ST1631.....	23	US0286.....	23
DF0449.....	39	SA0048.....	35	ST1632.....	23	US0289.....	23
DF0656.....	39	SA0049.....	15	ST1633.....	23	US0296.....	23
DF0979.....	39	SA0056.....	67	ST1636.....	23	US0297.....	23
DL0440.....	23	SA0057.....	69	ST1648.....	15	US0298.....	23
DL0555.....	14	SA0058.....	61	ST1670.....	23	US0300.....	23
DL0557.....	61	SA0060.....	9	ST1971.....	46	US0321.....	23
DL0558.....	61	SA0061.....	77	ST2417.....	69	US0346.....	23
DL0576.....	14	SA0149.....	61	ST2529.....	29	US0360.....	29, 80
DL0577.....	14	SD0549.....	14	ST2741.....	23	US0362.....	61
DL0713.....	35	SD0550.....	14	ST2800.....	63	US0395.....	14
DL0749.....	35	SD0559.....	9	ST2801.....	9	US0417.....	14
DL0750.....	33	SE0305.....	23	ST2804.....	36	US0419.....	14
DL0751.....	33	SE0307.....	23	ST2967.....	36	US0425.....	23
DL0752.....	33	SE0308.....	35	ST2973.....	36	US0426.....	23
DL0753.....	33	ST1109.....	23	ST2996.....	15	US0468.....	27
DL0755.....	33	ST1110.....	15, 29	ST2997.....	15	US0499.....	36
DL0761.....	23	ST1111.....	23	ST3028.....	15	US0506.....	23
DL0762.....	35	ST1113.....	23	ST3029.....	33	US0509.....	36
DL0763.....	35	ST1114.....	23	ST3035.....	15	US0531.....	15



31210257



An Oshkosh Corporation Company

**Corporate Office**  
**JLG Industries, Inc.**  
**1 JLG Drive**  
**McConnellsburg, PA 17233-9533 USA**  
☎ **(717) 485-5161 (Corporate)**  
☎ **(877) 554-5438 (Customer Support)**  
☎ **(717) 485-6417**

**Visit our website for JLG Worldwide Locations.**  
**[www.jlg.com](http://www.jlg.com)**