



Easi-Cladder™
Accessory Manual

JLG

*Easi-Cladder™
and
Easi-Cladder™
Plus
Accessory
Manual*

P/N - 3128112

January 21, 2004

ANSI



FOREWORD

This manual is a very important tool! Keep it with the accessory at all times.

The purpose of this manual is to provide owners, users, operators, lessors, and lessees with the precautions and operating procedures essential for the safe and proper machine operation for its intended purpose.

Due to continuous product improvements, JLG Industries, Inc. reserves the right to make specification changes without prior notification. Contact JLG Industries, Inc. for updated information.

SAFETY ALERT SYMBOLS AND SAFETY SIGNAL WORDS



This is the Safety Alert Symbol. It is used to alert you to the potential personal injury hazards. Obey all safety messages that follow this symbol to avoid possible injury or death

⚠ DANGER

INDICATES AN IMMINENTLY HAZARDOUS SITUATION. IF NOT AVOIDED, WILL RESULT IN SERIOUS INJURY OR DEATH. THIS DECAL WILL HAVE A RED BACKGROUND.

⚠ WARNING

INDICATES A POTENTIALITY HAZARDOUS SITUATION. IF NOT AVOIDED, COULD RESULT IN SERIOUS INJURY OR DEATH. THIS DECAL WILL HAVE AN ORANGE BACKGROUND.

⚠ CAUTION

INDICATES A POTENTIALITY HAZARDOUS SITUATION. IF NOT AVOIDED, MAY RESULT IN MINOR OR MODERATE INJURY. IT MAY ALSO ALERT AGAINST UNSAFE PRACTICES. THIS DECAL WILL HAVE A YELLOW BACKGROUND.

IMPORTANT

INDICATES PROCEDURES ESSENTIAL FOR SAFE OPERATION. THIS DECAL WILL HAVE A GREEN BACKGROUND.

⚠ WARNING

THIS PRODUCT MUST COMPLY WITH ALL SAFETY RELATED BULLETINS. CONTACT JLG INDUSTRIES, INC. OR THE LOCAL AUTHORIZED JLG REPRESENTATIVE FOR INFORMATION REGARDING SAFETY-RELATED BULLETINS WHICH MAY HAVE BEEN ISSUED FOR THIS PRODUCT.

IMPORTANT

JLG INDUSTRIES, INC. MUST BE NOTIFIED IMMEDIATELY IN ALL INSTANCES WHERE JLG PRODUCTS HAVE BEEN INVOLVED IN AN ACCIDENT INVOLVING BODILY INJURY OR DEATH OF PERSONNEL OR WHEN SUBSTANTIAL DAMAGE HAS OCCURRED TO PERSONAL PROPERTY OR THE JLG PRODUCT.

FOR :

- Accident Reporting
- Product Safety Publications
- Current Owner Updates
- Questions Regarding Product Safety
- Standards and Regulations Compliance Information
- Questions Regarding Special Product Applications
- Questions Regarding Product Modifications

CONTACT :

Product Safety and Reliability Department
JLG Industries, Inc.
1 JLG Drive
McConnellsburg, PA 17233

or Your Local JLG Office
(Addresses on back of manual cover)

In USA:

Toll Free: 877-JLG-SAFE
877-554-7233

Outside USA:

717-485-5161

E-mail: ProductSafety@JLG.com

REVISION LOG

June 9, 2003 – Original Issue of Manual

January 21, 2004 – Manual Revised

TABLE OF CONTENTS

SUBJECT - PARAGRAPH	PAGE NO.
FOREWORD	a
SAFETY ALERT SYMBOLS AND SAFETY SIGNAL WORDS	b
REVISION LOG	d
TABLE OF CONTENTS	I
LIST OF FIGURES	II
LIST OF TABLES	II
EASI-CLADDER™	1
Description	2
Specification	2
Safety Precautions	3
General	3
Preparation And Inspection	3
Operation	4
Service And Maintenance	4
Parts	6
Hydraulic Diagram	10
Electrical Diagram	12
EASI-CLADDER™ PLUS	13
Description	14
Specification	14
Safety Precautions	15
General	15
Preparation And Inspection	15
Component Overview	16
Operation	17
Power-up And Positioning Machine	17
Loading Wall Panel	17
Lifting And Setting Wall Panel	17
Releasing Panel	18
Wall Panel Removal From An Existing Wall	19
Storage	19
Service And Maintenance	23
Installation	23
Parts	24
Parts	28
Parts	30
Parts	34
Parts/hydraulic Diagram	36
Parts/hydraulic Diagram	38
Parts/air System Diagram	40
Parts	42
Parts/electrical	44
Electrical Schematic	48

LIST OF FIGURES

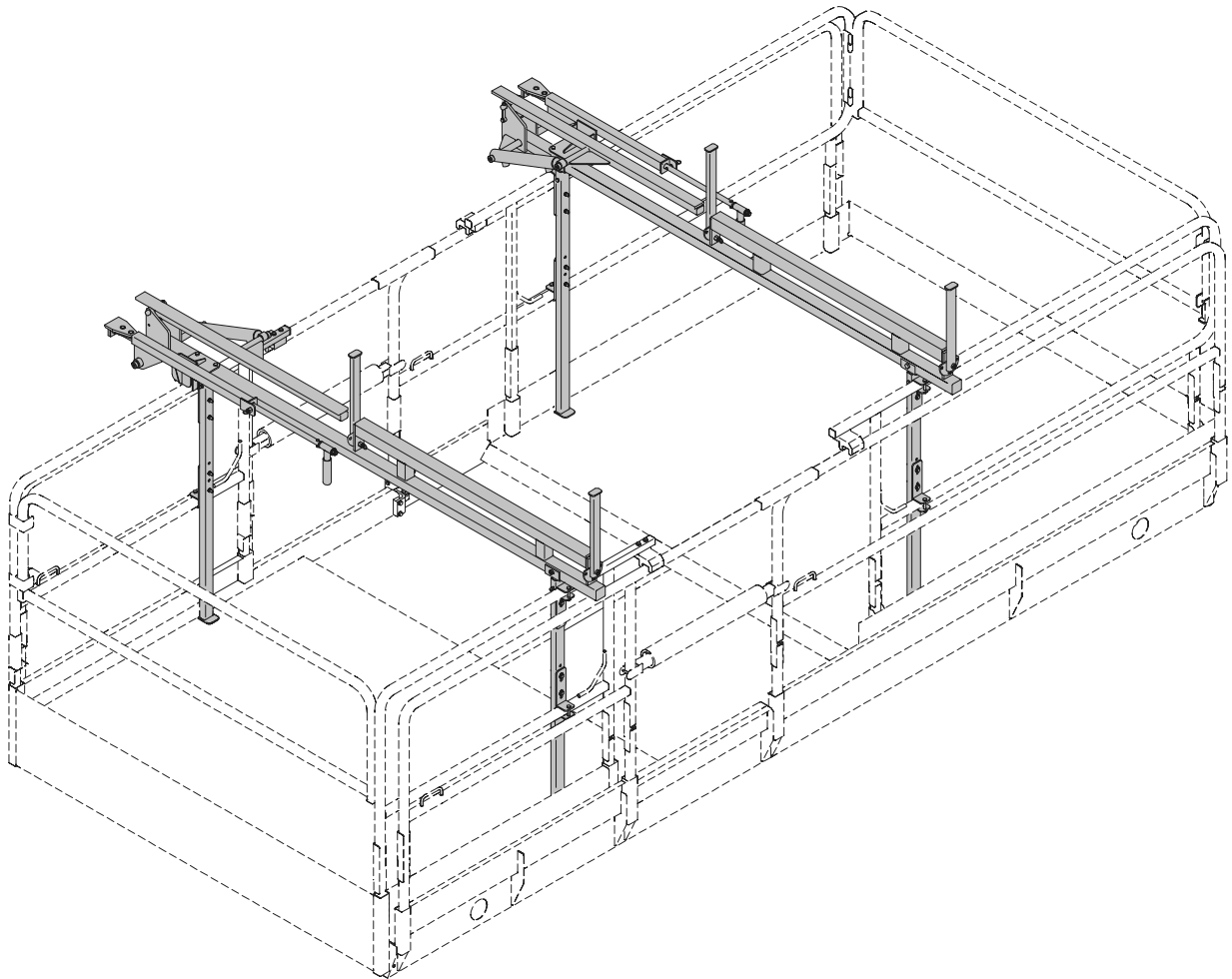
FIGURE NO.	TITLE	PAGE NO.
1.	Easi-Cladder™ Dimensions.	2
2.	Easi-Cladder™ Parts Drawing	6
3.	Easi-Cladder Hydraulic Diagram.	10
4.	Easi-Cladder Electrical Diagram	12
5.	Easi Cladder™ Plus - Component Overview	16
6.	Easi-Cladder™ Plus Control Box.	19
7.	Panel Loading and Lifting Position.	20
8.	Setting Platform Stabilizer Pad, Positioning Tilt Arm to Lock on to Panel.	20
9.	Panel Loading and Lifting Position.	21
10.	Panel Load Rail Locating Dimension (Typical).	22
11.	Easi-Cladder™ Plus Base Installation Parts Drawing	24
12.	Easi-Cladder™ Plus Assembly Parts Drawing	28
13.	Easi-Cladder™ Plus Vacuum Arms Parts Drawing	30
14.	Easi-Cladder™ Plus Mechanical Arms Parts Drawing	32
15.	Easi-Cladder™ Plus Hydraulic Diagram Parts Drawing	34
16.	Easi-Cladder™ Plus Air System Diagram Parts Drawing	36
17.	Easi-Cladder™ Plus Electrical Components Parts Drawing	38
18.	Easi-Cladder™ Plus Electrical Schematic.	42

LIST OF TABLES

TABLE NO.	TITLE	PAGE NO.
1	Platform: Ratings.	2
2	Cladding Device Specifications	2
3	Platform: Ratings.	14
4	Cladding Accessory Specifications	14

EASI-CLADDER™

Rough Terrain Scissor - Cladding Panel Installer



PRODUCT USE

This product is available for use on the following JLG products

3394RT

500RTS (Mega Deck Only)

4394RT

EASI-CLADDER™

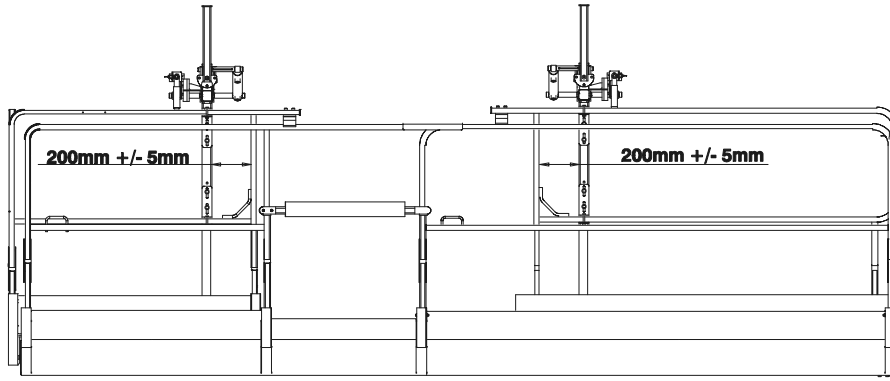


Figure 1. Easi-Cladder™ Dimensions

DESCRIPTION

The Cladding device is designed to position panels weighing up to 100 kg (220 lbs.). The main components are two frames installed on the scissor deck. The frames are supporting the weight of the panels and transfer all vertical forces directly to the machine's deck. The frames are stabilized by C-shaped brackets attaching them to the vertical posts of the platforms' handrail system.

SPECIFICATION

Table 1. - Platform: Ratings

	3394RT (with Dual Extension Deck)	4394RT (with Dual Extension Deck)	500RTS (with Mega Deck)
Max. Capacity			
Persons	2	2	2
Wind	12.5 m/s	12.5 m/s	12.5 m/s
Outriggers	Required	Required	Required
Max. Platform Capacity*	905kg - 135kg = 770kg	565kg - 135kg = 430kg	680kg - 135kg = 545kg
* Derated 135kg (297 lb.) due to weight of cladding accessory mounted on platform deck.			

Table 2. - Cladding Device Specifications

Requirement/Function	3394RT	4394RT	500RTS
Panel			
Max. Panel Length	8m	8m	8m
Max. Panel Width	1.25m	1.25m	1.25m
Lifting Weight	100kg	100kg	100kg
Storage Weight	340kg	340kg	340kg
Hydraulic Power Requirements			
Pressure	1000psi	1000psi	1000psi
Flow	2gpm	2gpm	2gpm
Control Functions	Tether Control Box	Tether Control Box	Tether Control Box
Deck Extension	Dual	Dual	Dual, Powered

SAFETY PRECAUTIONS

General

⚠ IMPORTANT

READ AND UNDERSTAND THE OPERATORS MANUAL FOR THE SPECIFIC JLG MODEL BEING USED. MAKE SURE LOAD IS SECURED.

⚠ WARNING

DO NOT OVERLOAD CLADDING DEVICE OR PLATFORM.

⚠ WARNING

DE-RATE THE PLATFORM CAPACITY BY 136 KG (300 LBS). REFER TO DECAL ON CLADDER.

- Do not exit platform over rails or stand on rails.
- Only use this option on models specified.
- Keep lanyard attached at all times.
- Do not use to handle or install glass.
- Make sure no personnel are beneath or around platform.

PREPARATION AND INSPECTION

1. Check for cracked welds and damage to cladding device.
2. Make sure cladding device is properly secured to platform.
3. Check operation of cladding device.
4. Keep Easi-Cladder control pendant and machine control box at the same locations to allow access to E-stop when using cladding device controls.

OPERATION

The panel (or panels) is loaded on the cladding device using a telescoping material handler or forklift. Ample space is provided between top of the handrail and the bottom surface of the panels (resting on the cladding device's frame) to retract the forks. During driving or scissor lift operation, panels are protected from shifting by four retractable stops.

The panels are moved manually from storage position onto the installing arms. The installing arms are actuated by hydraulic cylinders controlled from a tether mounted control box.

Pivoting telescopic supports are mounted to the cladding device's frame. The supports pivot to compensate for vertical misalignment between the machine and previously installed panels. At the end of the telescoping support, two plastic plates are installed forming a "paw" that rests on the top of the previously installed panel. The vertical surface is resting against this panel.

The telescoping supports have built in springs that help to maintain contact between the cladding device and the previously installed panel. Telescoping supports are guides for panel being installed and protect it from falling between the machine and the wall.

After telescoping supports are deployed, the installed panel is shifted to the very end of the telescoping support with its bottom edge just over the previously installed panel and then lifted by using the installing arms.

NOTE: *To shut down the cladding device depress the platform control box Emergency stop button.*

SERVICE AND MAINTENANCE

Check and tighten bolts and nut according to JLG's torque chart.

Replace leaking or damaged cylinders, worn pads, weak or damaged springs, and/or worn or missing decals.

This page left blank intentionally.

PARTS

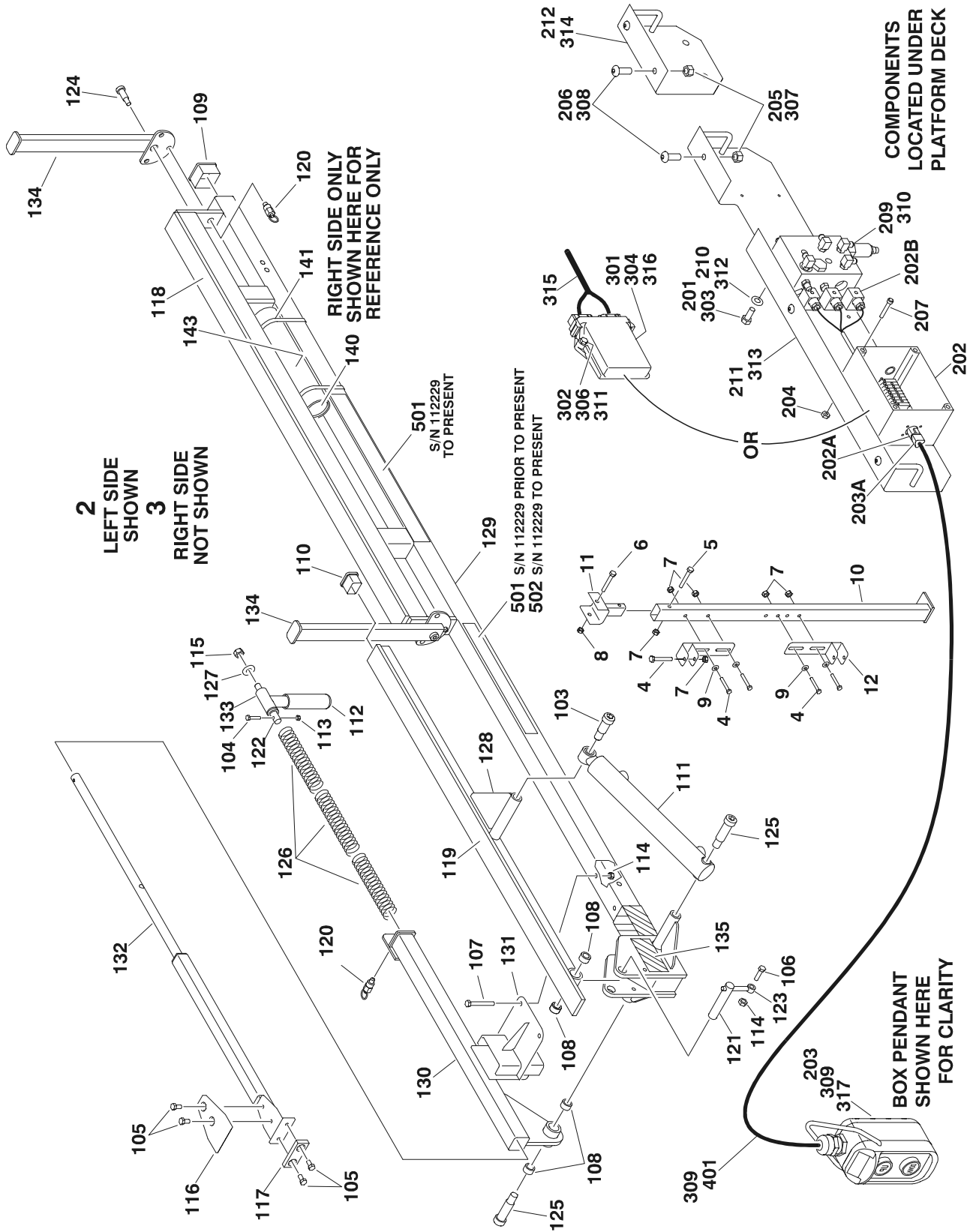


Figure 2. Easi-Cladder™ Parts Drawing

FIG & ITEM #	PART NUMBER	DESCRIPTION	QTY.	REV.
Figure 2.	0272439	EASI-CLADDER™ INSTALLATION	Ref.	B
1	0100011	Loctite #242 (Not Shown)	A/R	
2	0272378	Cladder Assy - Left (Note: See Items 101-135 for Breakdown)	1	
3	0272379	Cladder Assy -Right (Note: See Items 101-143 for Breakdown)	1	
4	0700819	Bolt, 8mm x 55mm	24	
5	0700821	Bolt, 8mm x 65mm	4	
6	0701022	Bolt, 10mm x 70mm	4	
7	3290801	Nut, M8 x 1.25 mm	28	
8	3291001	Nut, M10 x 1.5 mm	4	
9	4811902	Washer, 8mm	16	
10	4846643	Leg	4	
11	4846648	Leg Mount	4	
12	4846672	Bracket	8	
		EASI-CLADDER™ ASSEMBLY	Ref.	
	0272378	Cladder Assembly - Left Side (Shown)	Ref.	B
	0272379	Cladder Assembly - Right Side	Ref.	B
101	0100011	Loctite #242 (Not Shown)	A/R	
102	0100081	Loctite #454 (Not Shown)	A/R	
103	0630516	Screw, Shoulder	1	
104	0700614	Bolt, 6mm x 30mm	1	
105	0700808	Bolt, 8mm x 16mm	4	
106	0700814	Bolt, 8mm x 30mm	1	
107	0700821	Bolt, 8mm x 65mm	2	
108	0962173	Bushing	4	
109	1120556	Cap	1	
110	1120557	Cap	1	
111	1684236	Cylinder, Cladder	1	
	0962173	Bushing	4	
112	2560088	Handle	1	
113	3290601	Nut, M6	1	
114	3290801	Nut, M8	3	
115	3291201	Nut, M12	1	
116	3340950	Pad, Top	1	
117	3340951	Pad, Front	1	
118	3340952	Pad, Storage	1	
119	3340953	Pad, Tilt Plate	1	
120	3422369	Pin, Plunger	3	
121	3422977	Pin, Pivot	1	
122	3422994	Pin, Handle Mount	1	
123	3841143	Keeper	1	
124	3900269	Shoulder Bolt.5mm x 1	2	
125	3900327	Bolt, Shoulder	2	
126	4160198	Spring	3	
127	4812102	Washer, 12mm	1	
128	4846640	Arm, Tilt	1	
129	4846644	Support, Main	1	

EASI-CLADDER™

FIG & ITEM #	PART NUMBER	DESCRIPTION	QTY.	REV.
130		Arm, Pivot Options:	1	
	4846645	LH	1	
	4846662	RH	1	
131	4846646	Finger Guard	1	
132	4846647	Arm	1	
133	4846654	Handle	1	
134	4846668	Stop	2	
135	4420051	Safety, Tape	5	
136 to 139	Not Used			
140	1120555	Cap (Right Side Cladder Only)	2	
141	1320059	Clamp (Right Side Cladder Only)	2	
142	Not Available	Nameplate - Serial Number (Not Shown - Located on Item 29)	1	
143	3460334	Tube, PVC (Right Side Cladder Only)	1	
	0272477	EASI-CLADDER™ BOX PENDANT & VALVE INSTALLATION (500RTS)	Ref.	B
201	0641506	Bolt 5/16"-18NC x 3/4"	2	
202	0861560	Box, Junction	1	A
	3641479	Rail	1	
	3990010	Diode 6 Amp	2	
	4460601	Block, Terminal	7	
	4460603	Bussbar, 10 Position	1	
	4460607	Stop, Terminal	2	
	4460629	Marker, Terminal	1	
	4460968	Connector, Strain Relief	2	
202A	4460464	Pin, Male	3	
	4460989	Receptacle, Female - 3 Position	1	
202B	4922797	Harness, Wiring	1	1/A
	4460880	Connector, DIN	4	
203	0861565	Pendant Control Box Assembly	1	A
	4360532	Switch	1	
203A	4460539	Plug, Male - 3 Position	1	
	4460465	Terminal	3	
204	3310805	Locknut #8-32NC	4	
205	3311605	Locknut 3/8"-16NC	10	
206	3900316	Screw, Button 3/8"-16NC x 1"	10	
207	3930816	Capscrew #8-32NC x 1"	4	
208	4240127	Tie-Strap (Not Shown)	A/R	
209	4641249	Control Valve Assembly	1	
210	4711500	Flatwasher 5/16" Narrow	2	
211	4846674	Bracket	1	
212	4846675	Bracket, Coupler	2	
	0272586	EASI-CLADDER™ BOX PENDANT & VALVE INSTALLATION (3394RT & 4394RT)	Ref.	B
301	0610157	PC Board (Prior to S/N 112230 Only)	1	
302	0641410	Bolt 1/4"-20NC x 1 1/4"	2	
303	0641506	Bolt 5/16"-18NC x 3/4"	2	

FIG & ITEM #	PART NUMBER	DESCRIPTION	QTY.	REV.
304	0861492	Box, Circuit Card (Prior to S/N 112230 Only)	1	A
305	Not Used			
306	3311405	Locknut 1/4"-20NC	2	
307	3311605	Locknut 3/8"-16NC	7	
308	3900316	Screw, Button 3/8"-16NC x 1"	7	
309	4360533	Pendant Control Box Assembly (Includes Electrical Cable) (Prior to S/N 112230 Only)	1	
310	4641249	Control Valve Assembly	1	
311	4711400	Flatwasher 1/4" Narrow	2	
312	4711500	Flatwasher 5/16" Narrow	2	
313	4846674	Bracket	1	
314	4846675	Bracket, Coupler	2	
315	4922812	Harness, Wiring	1	3/C
	4460880	Connector, DIN	3	
	4460930	Plug, Male - 8 Position	1	
	4460465	Socket, Female	15	
	4460909	Plug - 12 Position (Black)	1	
	4460908	Plug - 12 Position (Gray)	1	
	4460928	Socket, Female	11	
	4460761	Receptacle, Female - 4 Position	1	
	4460267	Pin, Male	4	
	4460851	Plug, Male - 8 Position	1	
	4460852	Connector - 8 Position Bussbar Jumper	1	
	4460536	Receptacle, Female - 3 Position (S/N 112230 to Present Only)	1	
	4460464	Pin, Male (S/N 112230 to Present Only)	3	
	0840058	Boot (S/N 112230 to Present Only)	1	
316	1600348	Module (S/N 112230 to Present Only)	1	
317	0861565	Pendant Control Box Assembly (S/N 112230 to Present Only)	1	A
	4360532	Switch	1	
317A	4460539	Plug, Male - 3 Position	1	
	4460465	Terminal	3	
	0272531	EASI-CLADDER™ CABLE INSTALLATION (500RTS ONLY)	Ref.	1
401	1060330	Cable, Electrical - 16/3	110ft	
	4460043	Ring, Terminal	1	
	3990010	Diode, 6 Amp	2	
	0272528	DECAL INSTALLATION	Ref.	B
501	1705462	Decal, Easi-Cladder™ Capacity	4	
502	1705532	Decal, Easi-Cladder™	4	
		EASI-CLADDER™ KITS	Ref.	
	Not Available	3394RT/4394RT	Ref.	
	0272436	500RTS	Ref.	1

HYDRAULIC DIAGRAM

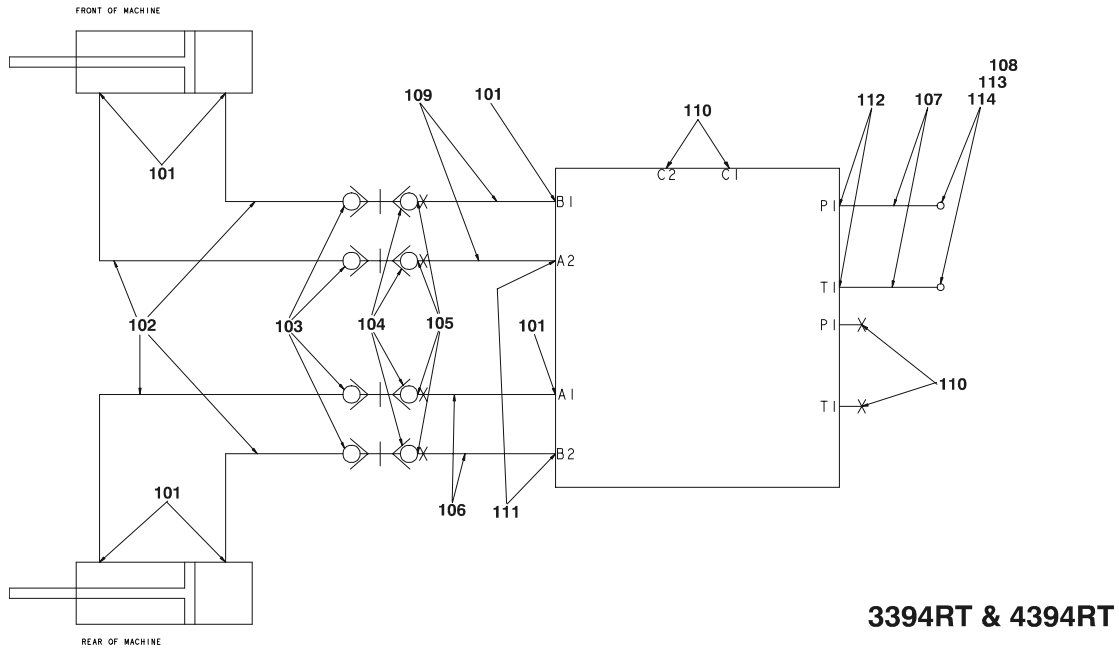
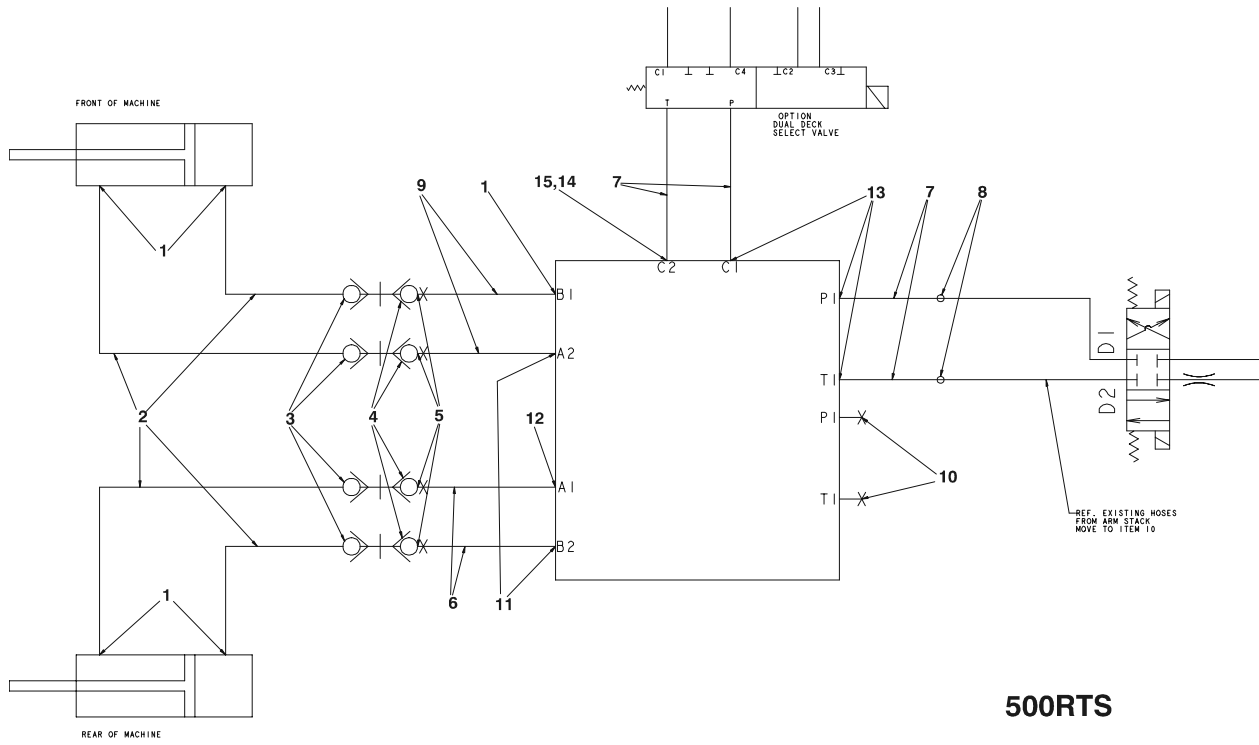
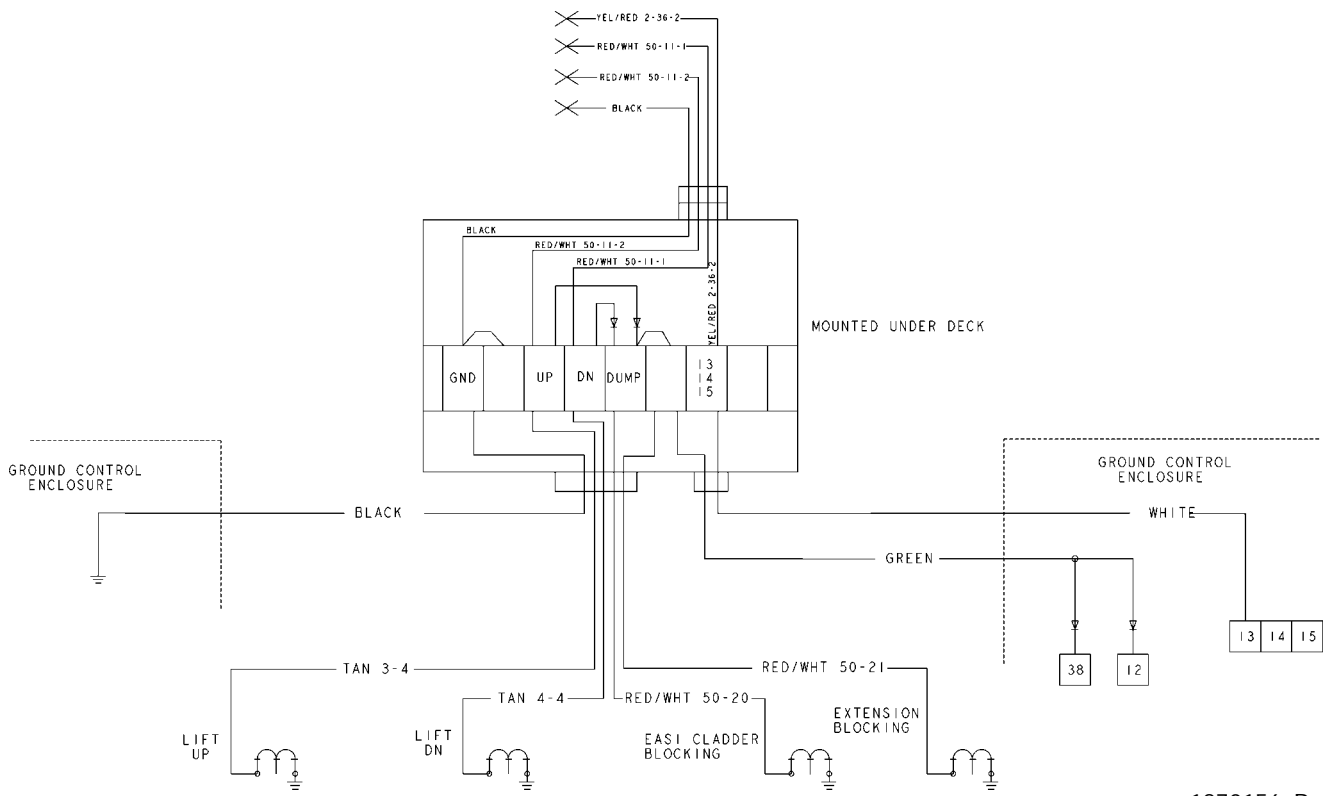


Figure 3. Easi-Cladder Hydraulic Diagram

FIG & ITEM #	PART NUMBER	DESCRIPTION	QTY.	REV.
Figure 3.		EASI-CLADDER HYDRAULIC DIAGRAM	Ref.	
	2792577	500RTS	Ref.	1
1	2220466	Fitting, 90°	5	
2	2753853	Hose	4	
3	2220428	Fitting, Quick Connect Male	4	
4	2220427	Fitting, Quick Connect Female	4	
5	2221142	Fitting	4	
6	2753849	Hose	2	
7	2753420	Hose	4	
8	2220510	Fitting, Straight	2	
9	2753852	Hose	2	
10	2220237	Plug	2	
11	2220415	Fitting, Straight	2	
12	2220940	Fitting, 90°	1	
13	2220472	Fitting, 90°	3	
14	2220819	Fitting, 90°	1	
15	2220609	Fitting, Straight	1	
	2792585	3394RT & 4394RT	Ref.	1/A
101	2220466	Fitting, 90°	5	
102	2753853	Hose	4	
103	2220428	Fitting, Quick Connect Male	4	
104	2220427	Fitting, Quick Connect Female	4	
105	2221142	Fitting	4	
106	2753849	Hose	2	
107	2753420	Hose	2	
108	2170706	Fitting, Tee	2	
109	2753852	Hose	2	
110	2220237	Plug	2	
111	2220415	Fitting, Straight	2	
112	2220940	Fitting, 90°	1	
113	2130606	Fitting, 90°	3	
114	2171006	Fitting, Plug	2	
115	2220237	Plug	2	

ELECTRICAL DIAGRAM

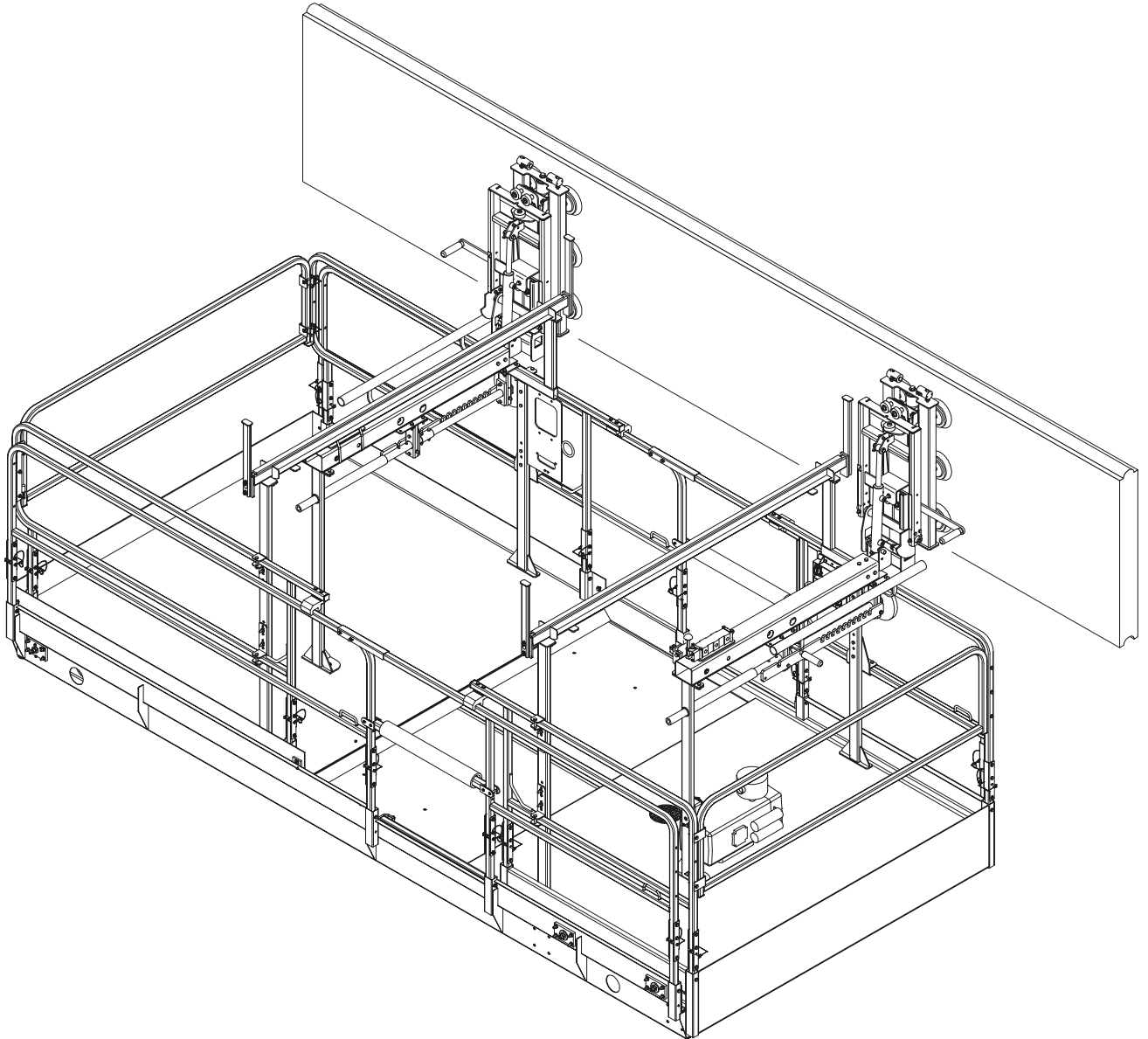


1870156_B

Figure 4. Easi-Cladder Electrical Diagram

EASI-CLADDER™ PLUS

Rough Terrain Scissor - Cladding Panel Installer



PRODUCT USE

This product is available for use on the following JLG products

3394RT

(when equipped with 7.25m Deck with
Dual Extension Decks Only)

500RTS

(when equipped with Mega Deck or
Dual Extension Decks Only)

EASI-CLADDER™ PLUS

DESCRIPTION

The cladding accessory when mounted to a scissor lift, is designed to lift and position insulated wall panels for attachment to a structure on the construction site. The main components are two panel loading frames with telescoping/lifting panel handling arms installed on the scissor deck. The frames are bolted to the scissor lift deck and are stabilized by C-shaped brackets attaching them to the vertical posts of the scissor lift platforms' handrail system.

The cladding accessory can be removed from the scissor lift deck when not required on the job site. All electrical, hydraulic, and vacuum lines to the cladding accessory are attached under the scissor deck using quick couplers for easy disconnect.

SPECIFICATION

Table 3. - Platform: Ratings

	3394RT (7.25m - Dual Extension Decks Only)	500RTS (with MegaDeck Only)	500RTS (with Dual Extension Decks Only)
Max. Capacity			
Persons	2	2	2
Wind	12.5 m/s	12.5 m/s	12.5 m/s
Outriggers	Required	Required	Required
Max. Platform Capacity *	905kg - 385kg = 520kg	680kg - 385kg = 295kg	900kg - 385kg = 515kg
* Derated 385kg (850lb.) due to weight of cladding accessory mounted on platform deck.			

Table 4. - Cladding Accessory Specifications

Requirement/Function	3394RT (7.25m - Dual Extension Decks)	500RTS (with MegaDeck)	500RTS (with Dual Extension Decks)
Cladding Panel			
Max. Panel Length	8m	8m	8m
Max. Panel Width	1.30m	1.30m	1.30m
Maximum Panel Weight	250kg	125kg	250kg
Max. Surface Irregularity (for vacuum to hold)	Panel must be smooth and free of high ridges in the area where the vacuum cups attach to the panel surface. The GREEN vacuum indicator light on the control box must be lit before panel can be lifted upright 90° for installation.		
Hydraulic Power Requirements			
Pressure	3000psi	3000psi	3000psi
Flow	2gpm	2gpm	2gpm
Control Functions	Tether Control Box	Tether Control Box	Tether Control Box
Deck Extension	Dual, Powered	Dual, Powered	Dual, Powered
Electric Power Requirements for Vacuum Pump			
Vacuum Pump	110 volt - 50Hz - 1 Phase - Minimum Vacuum Required 24.0 -in. Hg		
Onboard Electric Generator	110 volt - 2800 Watt (Continuous)	110 volt - 2500 Watt (Continuous)	

SAFETY PRECAUTIONS

General

⚠ IMPORTANT

READ AND UNDERSTAND THE OPERATORS MANUAL FOR THE SPECIFIC JLG MODEL BEING USED. MAKE SURE LOAD IS SECURED.

⚠ WARNING

DO NOT OVERLOAD CLADDING ACCESSORY OR PLATFORM.

⚠ WARNING

DE-RATE THE PLATFORM CAPACITY BY 385 KG (850 LBS). REFER TO DECAL ON CLADDER.

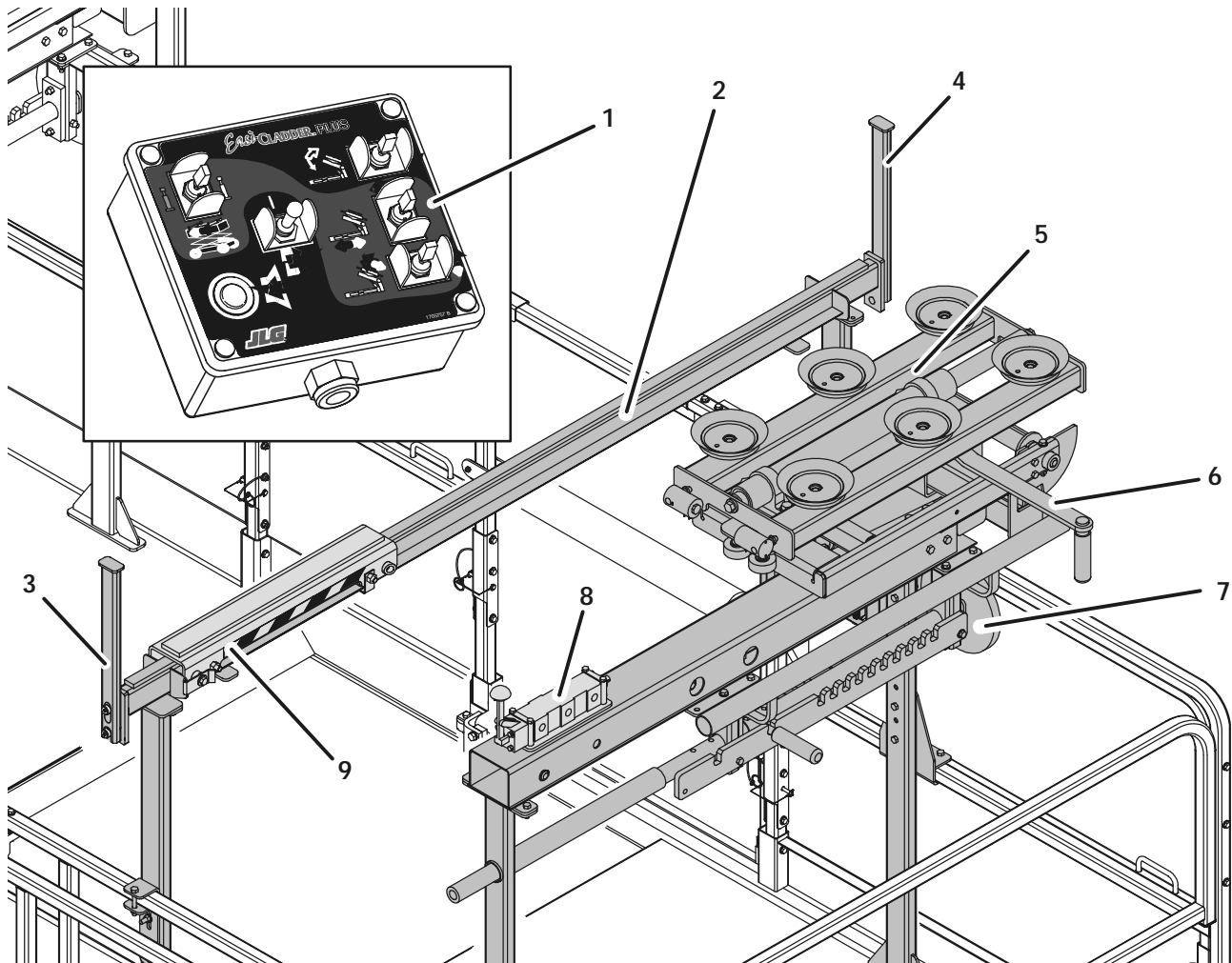
- Do not exit platform over rails or stand on rails.
- Use this option ONLY on models and decks specified.
- Do not use on damaged, excessively dirty or ice/snow covered panels.
- Keep fall protection lanyard attached at all times.
- Keep away from moving parts of Easi-Cladder™ Plus.
- Do not use to handle or install glass.
- Keep ground personnel at least 6m from machine.

PREPARATION AND INSPECTION

1. Check for cracked welds and damage to cladding accessory.
2. Make sure cladding accessory is properly secured to platform.
3. Check operation of cladding accessory.
4. Check that the vacuum cups are clean, free of debris and there are no torn, leaking or missing cups.
5. Keep Easi-Cladder™ Plus control box and machine control box at the same locations to allow access to Emergency-Stop when using cladding accessory controls.

EASI-CLADDER™ PLUS

COMPONENT OVERVIEW



- | | |
|---|--|
| 1. Control Box | 6. Manual Side to Side - Panel Movement Handle |
| 2. Panel Loading Rails | 7. Platform Stabilizer Pad |
| 3. Load Rail Stop (Outboard) | 8. Vacuum Release Valve |
| 4. Load Rail Stop (Inboard) | 9. Load Rail Trolley (Option) |
| 5. Telescoping/Lift Arm (w/Vacuum Manifold) | |

Note: Easi-Cladder™ Plus components are same for both left and right side assemblies mounted to the platform, except for the vacuum release valve which is mounted only on the right side and controls both the left and right side vacuum manifolds.

Figure 5. Easi Cladder™ Plus - Component Overview

OPERATION

Power-Up and Positioning Machine

1. Power-up scissor lift.
2. Position lift in front of and parallel of work area, within 60 to 120cm (10 to 20 in.) of wall.
3. Set the outriggers and level machine.
4. Turn on the onboard power generator.

Loading Wall Panel

5. Lift and rotate the (*outboard*) load rail stop out of the way. (*Figure 7., Item 2*)
6. Load a wall panel onto the panel loading rails. (*See Figure 7.*)

NOTE: *Extend the platform extension ends to accommodate wall panel length, if necessary.*

7. Raise the platform to the desired height to install the panel.
8. Extend and set the platform stabilizer pads out from the side of the machine platform against the previously installed panel. (*See Figure 8.*)

NOTE: *This will limit platform side to side movement once the wall panel is lifted out over the side of the platform.*

9. Move the loaded wall panel over to the (vacuum) telescoping/lift arm side of the loading rails. (*See Figure 7.*)

NOTE: *If machine is equipped with the optional load rail trolley, release the trolley latch on each load rail and roll the panel across the loading rails.*

10. Lift and rotate the (*inboard*) load rail stop down out of the way on the wall side of the machine. (*See Figure 8.*)

Lifting and Setting Wall Panel

11. Push the VACUUM ON switch, on the control box, to start the vacuum pump. (*See Figure 6., Item 3*)

NOTE: *The vacuum pump is rated for continuous operation. Once turned on the pump will not shut off until the machine is powered down.*

12. Using the control box, fully extend the lift arms (*Figure 6., Item 6*) then raise the arms (*Figure 6., Item 4*) until the vacuum cups make contact and lift the panel clear of the loading rails. (*See Figure 8.*)

13. When the proper vacuum is achieved in the vacuum cups, the GREEN indicator light on the Easi-Cladder™ Plus control box will be illuminated. (*See Figure 6., Item 2*)

NOTE: *If proper vacuum is not achieved, the GREEN indicator light will not illuminate and the lift function of the telescoping/lift arm will be cut out. Lower panel and reposition lift arm. See Table 4 about panel maximum surface irregularity.*

14. Once the GREEN indicator light is lit on the control box, use the control box switches (*Figure 6., Items 4 and 5*) to lift the panel up 90°, telescope out and lower into position. (*See Figure 9.*)
 - Adjust panel up/down and in/out movement using the control box switches.
 - Adjust panel end to end movement, if necessary, using the manual positioning handles located on each of the (vacuum) lift arms.

⚠ IMPORTANT

IN CASE OF VACUUM FAILURE DURING PANEL LIFT, THE VACUUM (GREEN) INDICATOR LIGHT WILL GO OFF. TELESCOPE OUT AND ROTATE UP FUNCTIONS WILL BE DISABLED. THE OPERATOR SHOULD IMMEDIATELY LIFT DOWN AND TELESCOPE PANEL BACK ONTO THE LOAD RAILS AND ATTEMPT TO VACUUM LOCK THE PANEL AGAIN, OR IF NECESSARY, MAKE REPAIRS TO THE MACHINERY BEFORE RESUMING WORK.

Releasing Panel

15. Secure panel to the wall, before releasing panel.
16. Release the vacuum lift arm by;
 - Pulling the handle on the vacuum release valve, mounted above the vacuum pump on railing.
 - Then lift and pull the vacuum release switch back (*Figure 6., Item 3*) and push the telescoping/lift arm retract switch (*Figure 6., Item 4*) on the control box simultaneously. If arms are not retracted away from the panel once vacuum is released, vacuum will build up and hold onto panel again.
17. Once lift arms are retracted, manually retract the platform stabilizer pads away from the wall.
18. To install the next wall panel repeat steps 5 thru 16, except for step 10, vacuum pump will run continuous until machine is powered down.

NOTE: To shut down the cladding accessory depress the platform control box Emergency stop button.

Wall Panel Removal From An Existing Wall

1. Follow machine power up steps 1 through 4.

NOTE: *Extend the platform extension ends to accommodate wall panel length, if necessary.*

2. Position and raise the platform to the desired height to remove the panel.
3. Extend and set the platform stabilizer pads out from the side of the machine platform against the panel below the one being removed. (See Figure 8.)

NOTE: *This will limit platform side to side movement once the wall panel is lifted over the side of the platform.*

4. Push the VACUUM ON switch, on the control box, to start the vacuum pump. (See Figure 6., Item 3)

NOTE: *The vacuum pump is rated for continuous operation. Once turned on the pump will not shut off until the machine is powered down.*

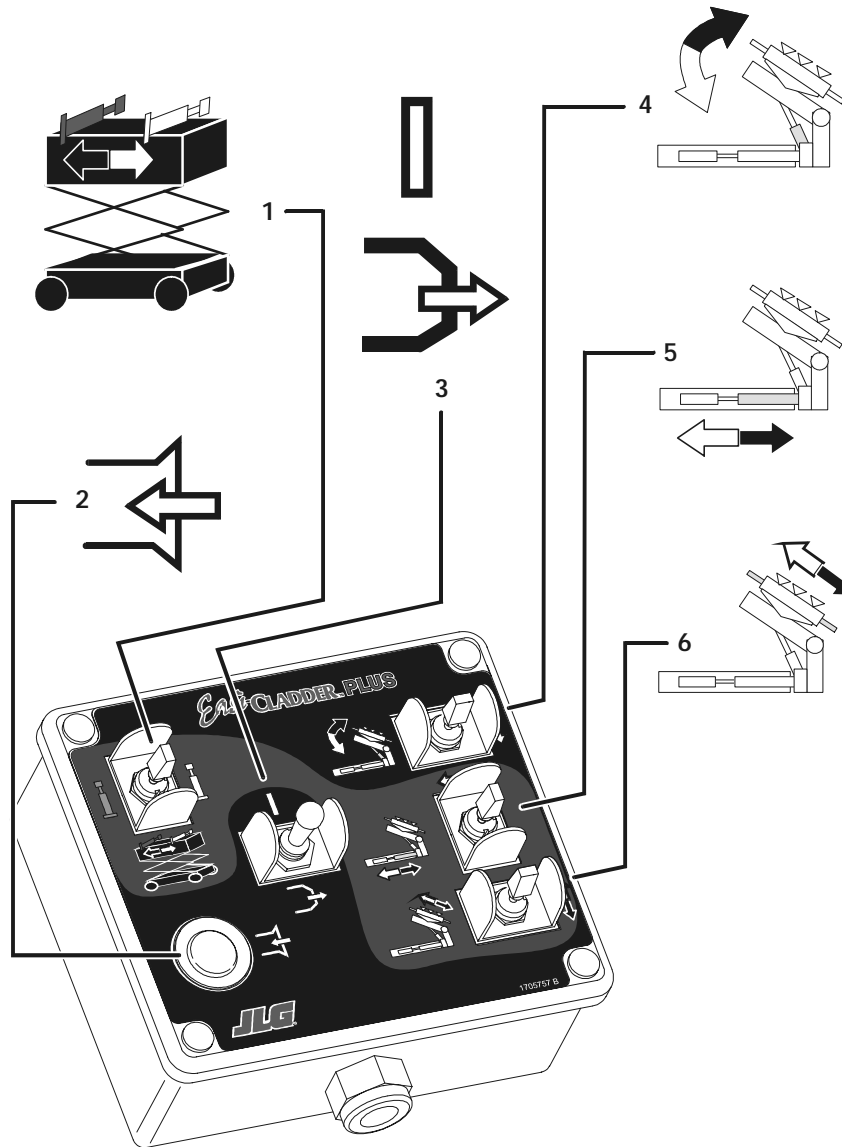
5. Lift and pull the vacuum release switch back (Figure 6., Item 3) while raising the lift arm to vertical (Figure 6., Item 4).
6. Fully retract the lift arm. (Figure 6., Item 6)
7. Telescope the lift arm out against the panel until the suction cups make contact with the panel. The GREEN light will be on when a proper vacuum is achieved in the system.
8. Once vacuum is achieved, unscrew panel from the wall.
9. Lift panel with control box switch (Figure 6., Item 6), then telescope in (Figure 6., Item 5), and lift panel down (Figure 6., Item 4) onto panel load rails.
10. To release the panel, follow steps 15 through 17 in "Releasing Panel" shown in previous sub-section.

STORAGE

IMPORTANT

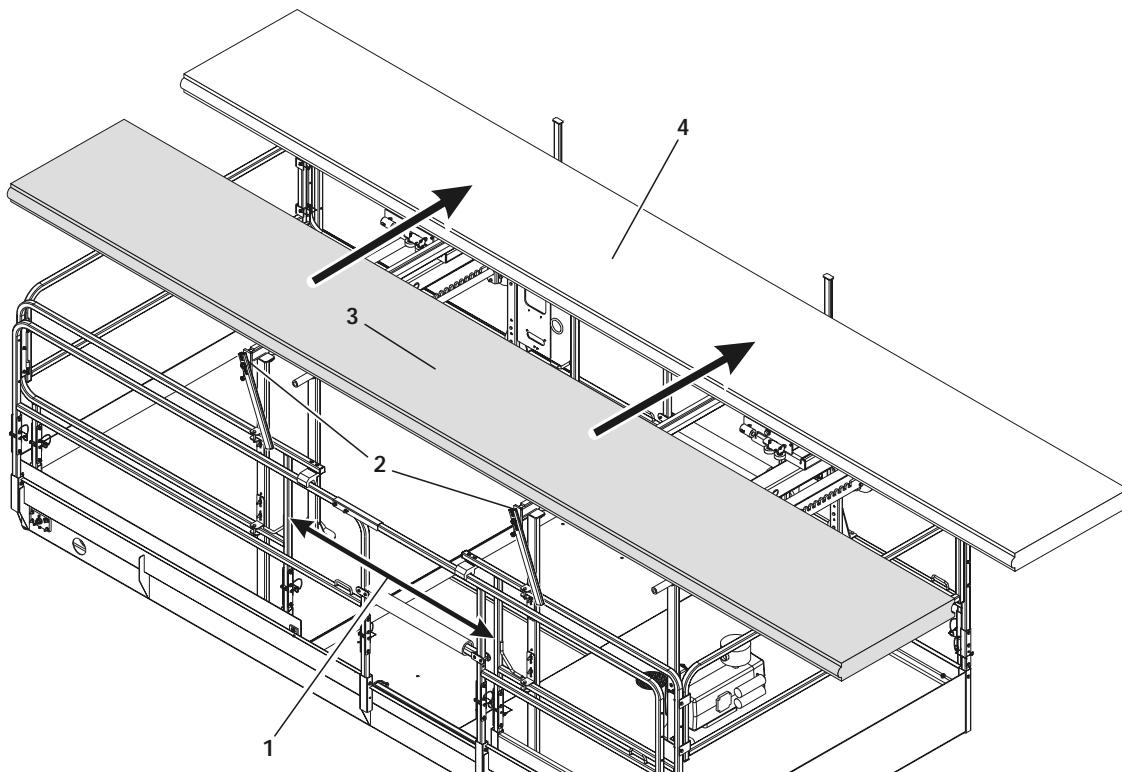
KEEP THE VACUUM MANIFOLD CUPS COVERED WHEN MACHINE IS NOT IN USE.

EASI-CLADDER™ PLUS



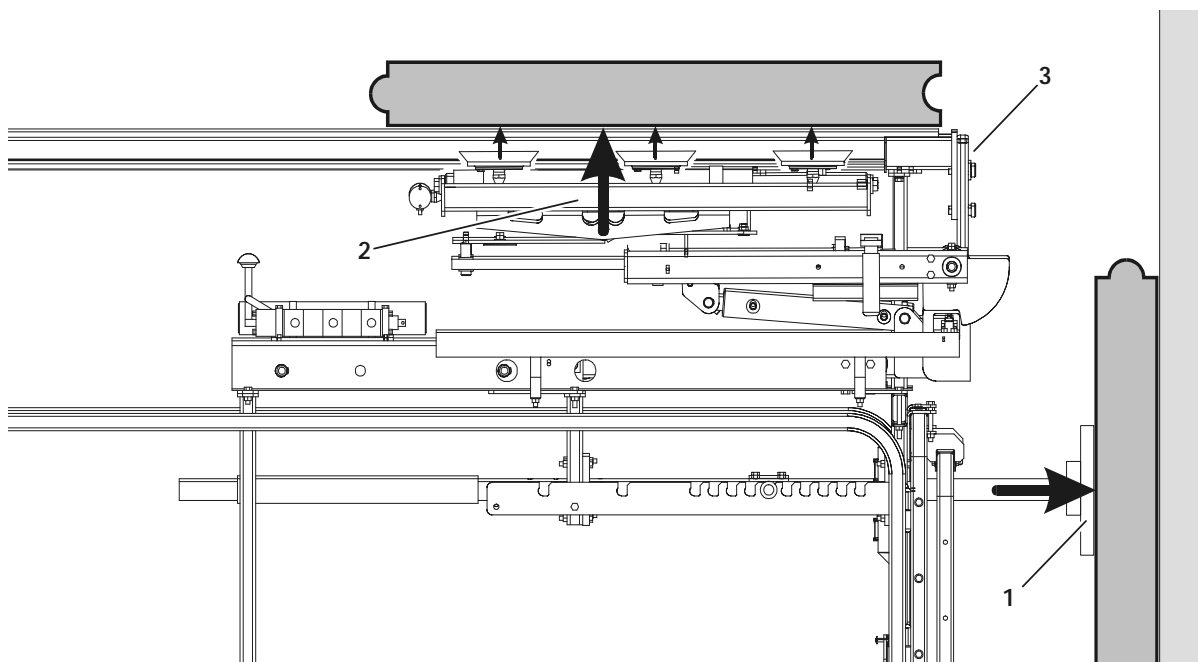
- | | |
|---|--|
| <p>1. Telescope and Lift Cylinder Selection - Override Switch - Used simultaneously with either the Telescope Switch (<i>item 5</i>) and Manifold Movement Switch (<i>item 6</i>) allows the Left and Right Lift Arms to be telescoped in and out, or up and down, individually. Compensates for machine not being parallel or level with the installation wall.</p> <p>2. Vacuum Indicator Light (GREEN) - When lit indicates proper vacuum has been reached in the vacuum manifolds and is strong enough to hold the wall panel onto the vacuum cups.</p> <p>3. Vacuum On and Release Switch - Press FORWARD to turn accessory and vacuum pump on. Lift UP and pull BACK to release panel, used simultaneously with the manual vacuum release valve.</p> | <p>4. Lift Arm Rotate Switch - Rotates the Lift Arm assembly between horizontal and vertical positions.</p> <p>5. Lift Arm Telescope Switch - Telescopes the Lift Arm out and back in from the platform.</p> <p>6. Vacuum Manifold Movement Switch - Moves the vacuum manifold in/out when horizontal or up/down when vertical on the Lift Arm.</p> |
|---|--|

Figure 6. Easi-Cladder™ Plus Control Box.



- | | |
|---|--------------------------------------|
| 1. Extend Platform Extension Ends to Accommodate Panel Length | 3. Panel Load Position on Load Rails |
| 2. Lower (<i>Outboard</i>) Load Rail Stops when Loading Panel | 4. Panel Lift Position on Load Rails |

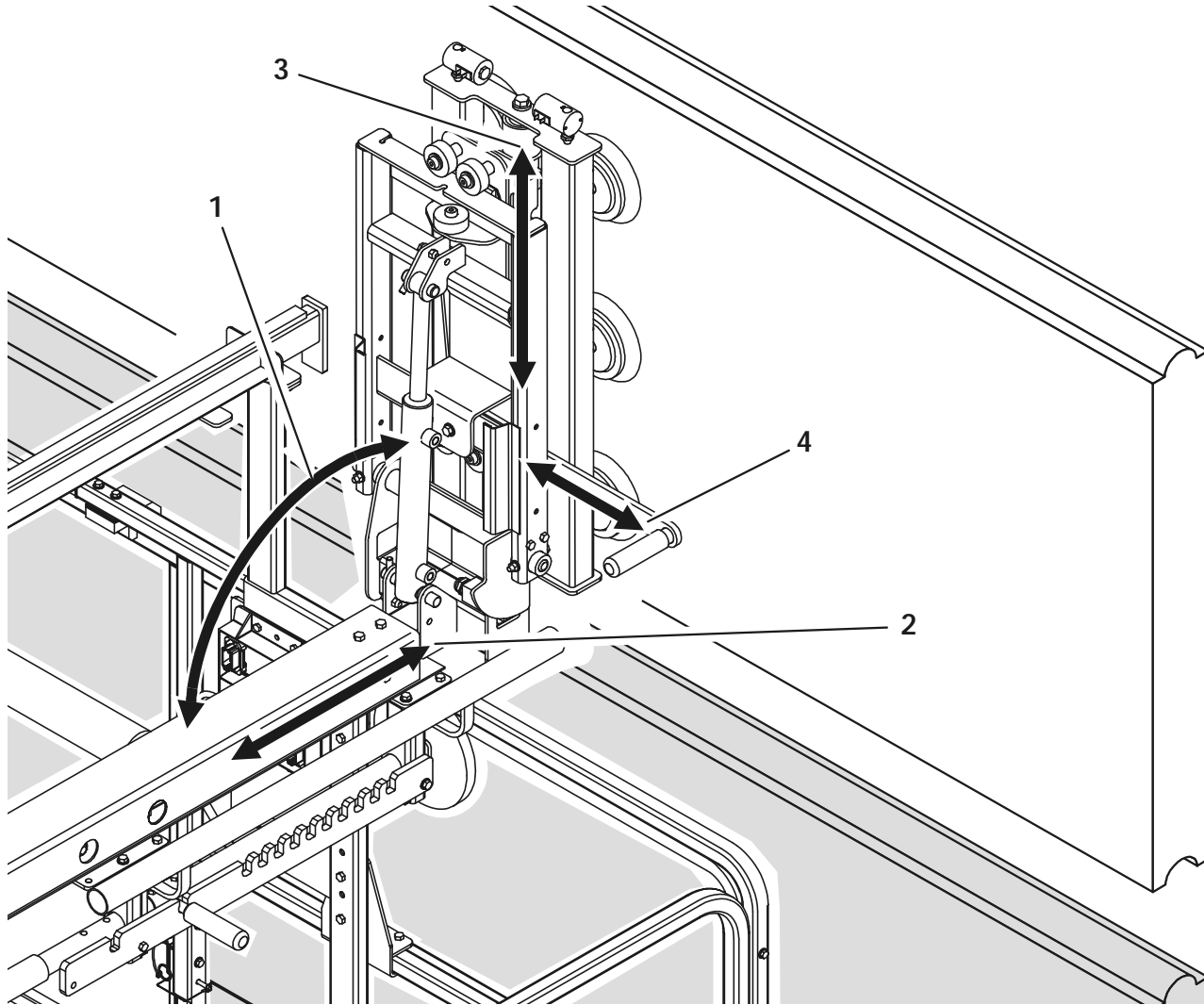
Figure 7. Panel Loading and Lifting Position.



- | | |
|--|---|
| 1. Stabilizer Pad Set Against Wall | 3. Lift and Rotate Load Rail Stops Out of the Way |
| 2. Position and Raise Lift Arm to Lock on to Panel | |

Figure 8. Setting Platform Stabilizer Pad, Positioning Lift Arm to Lock on to Panel.

EASI-CLADDER™ PLUS



1. Rotate Lift Arm 90°
2. Telescope Arm Out (a)

3. Move Manifold to Raise and Lower Panel (a)
4. Side to Side - Panel Movement Handles (One on Both Ends)

Note: (a) Telescope Out and Manifold Raise and Lower controls for both Lift Arms can be moved separately instead of in tandem by using the Telescope/Lift Cylinder - Override Selection Switch (Figure 6., Item 1).

Figure 9. Panel Loading and Lifting Position.

SERVICE AND MAINTENANCE

Check and tighten bolts and nut according to JLG's torque chart.

Replace leaking or damaged cylinders, worn pads, and worn or missing decals.

Check vacuum manifold cups before each use, keep clean and free of debris.

Due to various environmental operating conditions and care, replacement interval of the vacuum manifold cups will vary. Replace the cups if they exhibit any of the following symptoms - become discolored with age, are dried out or show signs of cracking.

INSTALLATION

The cladder accessory is fastened to the scissor deck using pre-existing holes drilled into the deck when accessory is ordered with the machine from the factory. Refer to Figure 11. and detailed parts list for further installation of hardware.

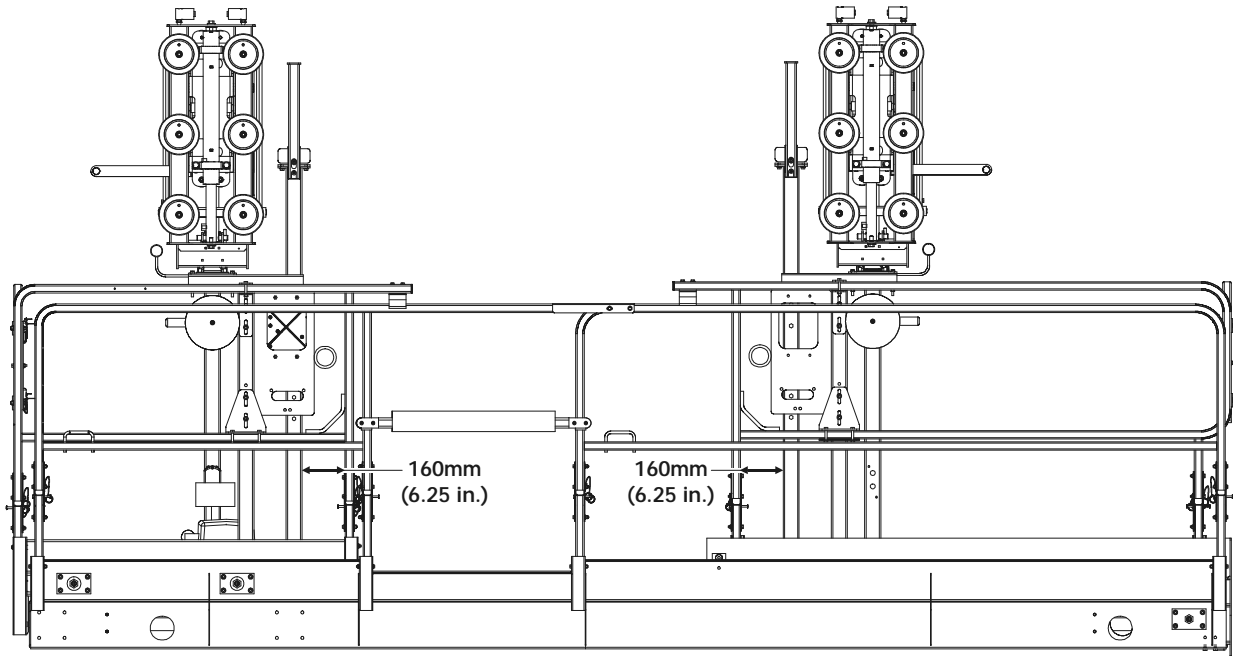


Figure 10. Panel Load Rail Locating Dimension (Typical).

EASI-CLADDER™ PLUS

PARTS

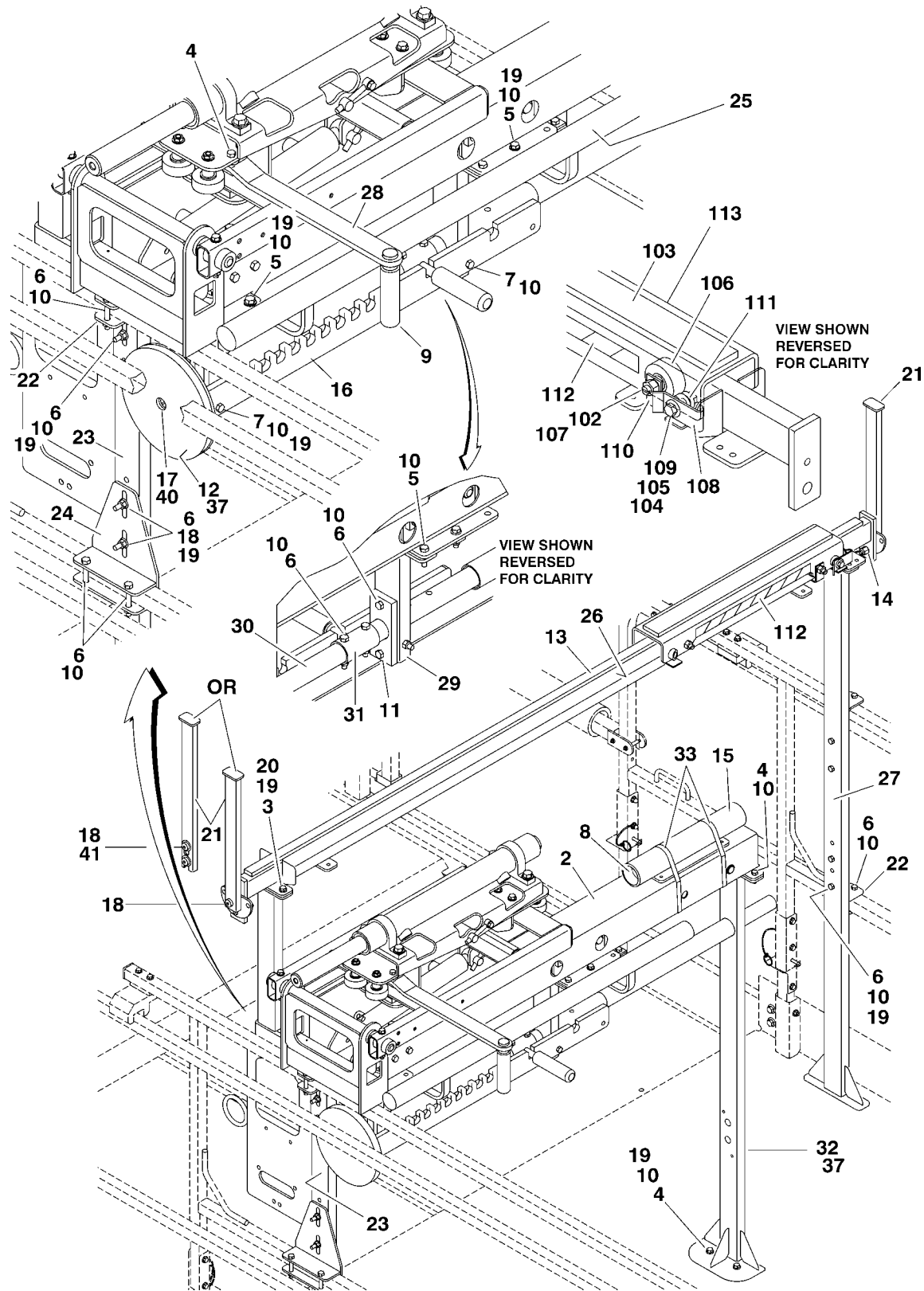


Figure 11. Easi-Cladder™ Plus Base Installation Parts Drawing

EASI-CLADDER™ PLUS

FIG & ITEM #	PART NUMBER	DESCRIPTION	QTY.	REV.
Figure 11.	0273304	EASI-CLADDER PLUS™ BASE INSTALLATION	Ref.	1
	0272962	Cladder Sub-Assembly	Ref.	D
1	0100081	Loctite #454 (Not Shown)	A/R	
2	0272962	Cladder Assembly (See Figure 2-8 for Breakdown)	2	
3	0641506	Bolt 5/16"-18NC x 3/4"	8	
4	0641508	Bolt 5/16"-18NC x 1"	12	
5	0641510	Bolt 5/16"-18NC x 1 1/4"	12	
6	0641518	Bolt 5/16"-18NC x 2 1/4"	38	
7	0641528	Bolt 5/16"-18NC x 3 1/2"	8	
8	1120555	Cap, Manual Storage (Prior to S/N 116736)	2	
9	2560088	Handle	4	
10	3311505	Locknut 5/16"-18NC	66	
11	3340969	Pad, Slide	4	
12		Pad, Panel Options:	2	
	3340970	Prior to S/N 115825		
	3340983	S/N 115825 to Present		
13	3340971	Pad, Storage	2	
14	3422369	Pin, Plunger (Prior to S/N 115825)	4	
15	3460334	Tube, Manual Storage (Prior to S/N 116736)	1	
16	3574325	Plate, Tooth	2	
17	3900190	Bolt, Shoulder	2	
18	3900289	Bolt, Shoulder	8	
19	4711500	Flatwasher 5/16" Narrow	50	
20	4761500	Lockwasher 5/16"	8	
21		Stop, Rotating Options:	4	
	4846668	Prior to S/N 115825		
	4848837	S/N 115825 to Present		
22	4846872	Bracket	2	
23	4846828	Leg (Front)	2	
24	4846829	Bracket	2	
25	4846832	Handrail	2	
26	4846835	Stand, Storage	2	
27	4846836	Leg	2	
28	4846837	Handle	2	
29	4846838	Mount, Stabilizer	2	
30	4846839	Tube, Ratchet	2	
31	4846840	Handle	1	
32	4846841	Leg	1	
33	1320059	Clamp (Prior to S/N 116736)	2	
34 to 36	Not Used			
37	3574631	Plate, Pad Mount (S/N 115825 to Present)	2	
38	Not Used			
39	4846947	Leg, Vacuum Pump Mount (S/N 115825 to Present)	1	
40	4891600	Flatwasher 3/8" (S/N 115825 to Present)	2	
41	4891800	Flatwasher 1/2" (S/N 115825 to Present)	4	

EASI-CLADDER™ PLUS

FIG & ITEM #	PART NUMBER	DESCRIPTION	QTY.	REV.
	0272961	TROLLEY ASSEMBLY	Ref.	B
101	0100081	Loctite #454 (Not Shown)	A/R	
102	3321701	Nut 7/16"- NF	8	
103	3340972	Pad	2	
104	0641612	Bolt 3/8"-16NC x 1 1/2"	2	
105	4711700	Flatwasher 7/16" Narrow	4	
106	APL-P117	Cap, Roller	8	
107	BB6-CF-1-S	Follower, Cam	8	
108	2940152	Latch	2	
109	3311605	Locknut 3/8"-16NC	2	
110	3574495	Plate, Retainer	4	
111	4160206	Spring	2	
112	4420077	Tape, Hazard	5ft/1.5m	
113	4846885	Trolley	2	

FIG & ITEM #	PART NUMBER	DESCRIPTION	QTY.	REV.

EASI-CLADDER™ PLUS

PARTS

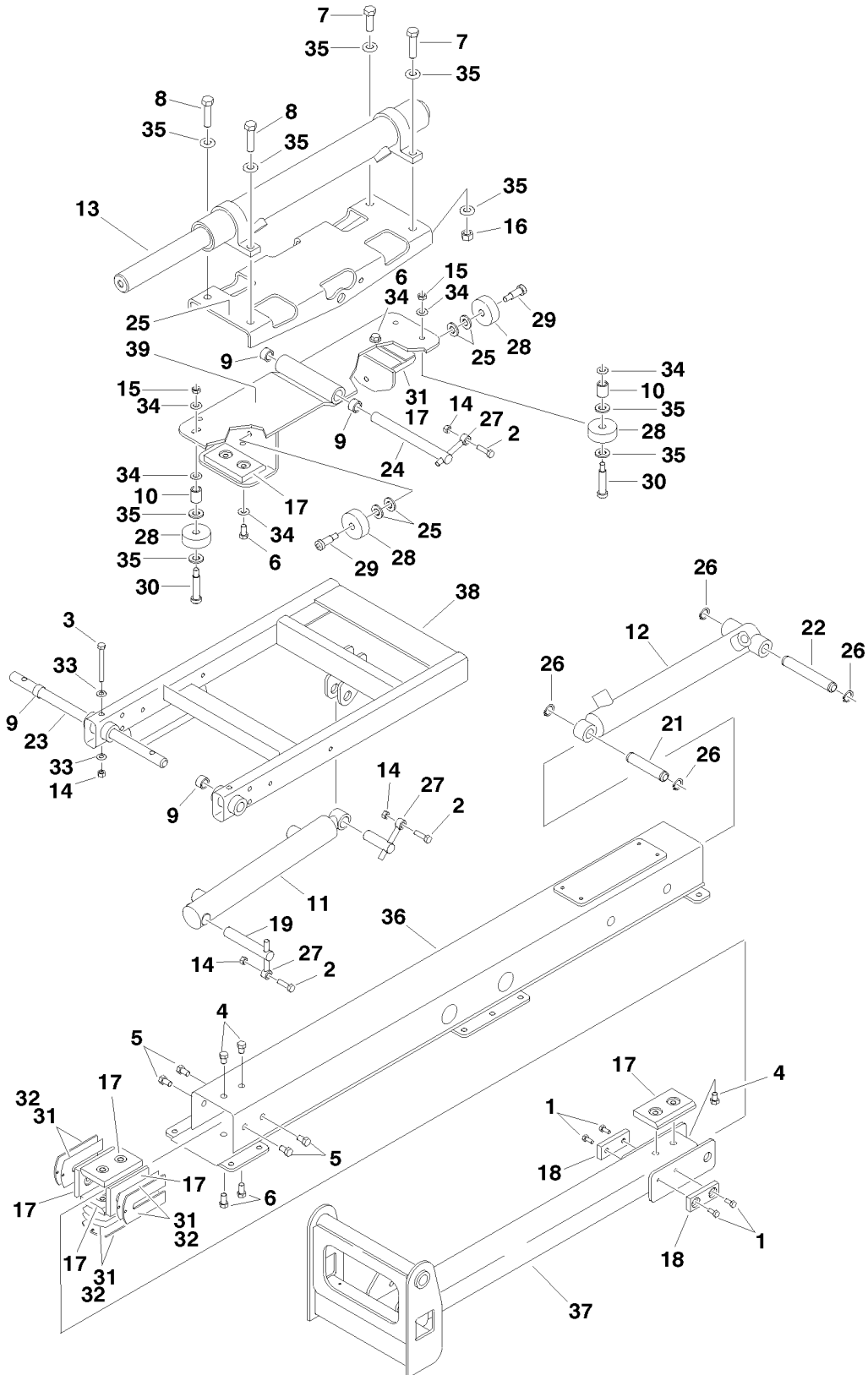


Figure 12. Easi-Cladder™ Plus Assembly Parts Drawing

FIG & ITEM #	PART NUMBER	DESCRIPTION	QTY.	REV.
Figure 12.	0272957	CLADDER ASSEMBLY	Ref.	D
1	0641405	Bolt 1/4"-20NC x 5/8"	4	
2	0641509	Bolt 5/16"-18NC x 1 1/8"	3	
3	0641524	Bolt 5/16"-18NC x 3"	2	
4	0641604	Bolt 3/8"-16NC x 1/2"	4	
5	0641605	Bolt 3/8"-16NC x 5/8"	4	
6	0641606	Bolt 3/8"-16NC x 3/4"	6	
7	0641812	Bolt 1/2"-13NC x 1 1/2"	2	
8	0641816	Bolt 1/2"-13NC x 2"	2	
9	0962173	Bushing	4	
10	0962528	Bushing, Spacer	4	
11		Cylinder, Cladder Lift Options:	1	
	1684236	Prior to S/N 116093		
	1684352	S/N 116093 to Present		
12		Cylinder, Cladder Telescope Options:	1	
	1684272	Prior to S/N 116093		
	1684353	S/N 116093 to Present		
13		Cylinder, Cladder Manipulator Options:	1	
	1684279	Prior to S/N 116093		
	1684354	S/N 116093 to Present		
14	3311505	Locknut 5/16"-18NC	5	
15	3311602	Nut, Jam 3/8"-16NC	2	
16	3311805	Locknut 1/2"-13NC	4	
17	3340852	Pad, Wear	7	
18	3340951	Pad (Front)	2	
19	3422828	Pin	1	
20	3422899	Pin	1	
21	3423051	Pin	1	
22	3423052	Pin	1	
23	3423053	Pin	1	
24	3423055	Pin	1	
25	3574511	Plate, Cradle	1	
26	3760351	Ring, Retaining	4	
27	3841143	Keeper, Pin	3	
28	3860083	Roller	6	
29	3900289	Bolt, Shoulder 1/2"-13NC x 1"	2	
30	3900273	Bolt, Shoulder 1/2"-13NC x 2"	4	
31	4070904	Shim #16 Gauge	A/R	
32	4071065	Shim .125	4	
33	4711500	Flatwasher 5/16" Narrow	4	
34	4711600	Flatwasher 3/8" Narrow	8	
35	4711800	Flatwasher 1/2" Narrow	20	
36	4846830	Tube, Hat	1	
37	4846831	Tube, Slide	1	
38	4846833	Arm, Lift	1	
39	4846883	Attach, Pivot	1	

EASI-CLADDER™ PLUS

PARTS

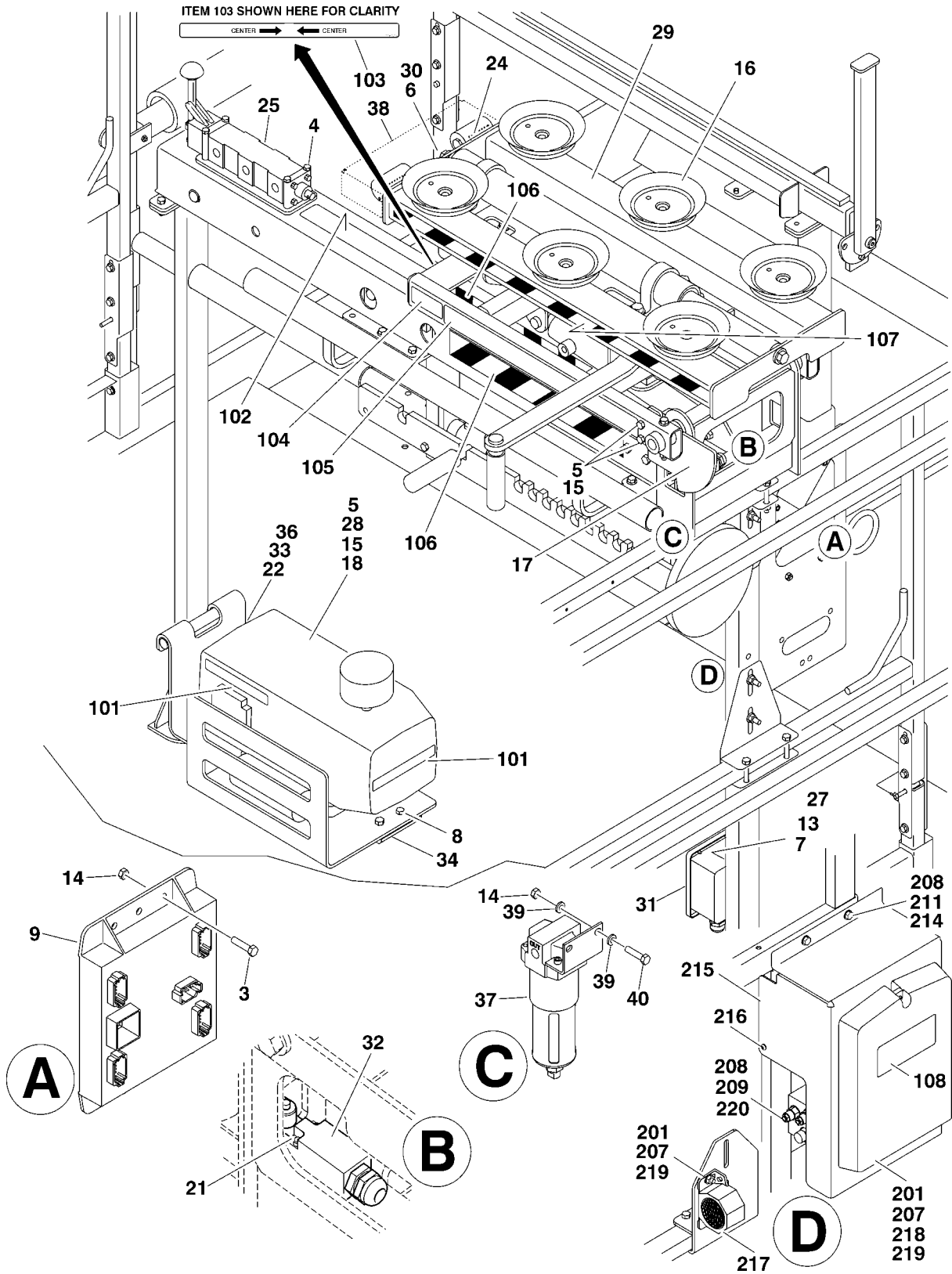


Figure 13. Easi-Cladder™ Plus Vacuum Arms Parts Drawing

FIG & ITEM #	PART NUMBER	DESCRIPTION	QTY.	REV.
Figure 13.	0273303	EASI-CLADDER PLUS VACUUM ARMS PARTS COMPONENTS	Ref.	2
	0273043	Vacuum Arms Assembly	Ref.	E
1 to 2	Not Used			
3	0641406	Bolt 1/4"-20NC x 3/4"	4	
4	0641420	Bolt 1/4"-20NC x 2 1/2"	4	
5	0641514	Bolt 5/16"-18NC x 1 3/4"	8	
6	0691810	Bolt 1/2"-24NF x 1 1/4"	4	
7	0721014	Screw #10-24 x 1 3/4"	2	
8	0641604	Bolt 3/8"-16NC x 1/2"	2	
9	1600356	Module, Controller	1	
10 to 12	Not Used			
13	3311005	Nut #10-24NC	2	
14	3311405	Locknut 1/4"-20NC	4	
15	3311505	Locknut 5/16"-18NC	8	
16	3340973	Pad, Suction	12	
	1671129	Cover, Vacuum Cup	2	
17	3574393	Plate, Cam	2	
18	3600380	Pump, Vacuum	1	
19 to 20	Not Used			
21	3930828	Capscrew #8-32 x 1 3/4"	4	
22	0641812	Bolt 1/2"-13NC x 1 1/2"	1	
23	Not Used			
24	4641277	Valve, Orifice	2	
25	4641279	Valve, Manual	1	
26	Not Used			
27	4751000	Flatwasher #10	4	
28	4751500	Flatwasher 5/16"	4	
29	4846845	Reservoir, Vacuum	2	
30	4891800	Flatwasher 1/2" Hardened	4	
31	4922928	Relay Harness	1	
32	4922934	Limit Switch Harness (S/N 115825 to Present)	2	
	Use 4360549	Limit Switch (1 per Harness) (was p/n 4360322)	1	
	4460968	Connector, Strain Relief (1 per Harness)	1	
	4460464	Pin, Male (2 per Harness)	2	
	4460897	Terminal, 2 Position Receptacle (1 per Harness)	1	
33	3311805	Locknut 1/2"-13NC (S/N 115825 to Present)	1	
34	3340852	Pad, Wear (S/N 115825 to Present)	1	
35	3574620	Plate, Vacuum Pump Mounting (S/N 115825 to Present)	1	
36	4711800	Flatwasher 1/2 (S/N 115825 to Present)	2	
37	2120192	Filter, Water Separator (S/N 116736 to Present)	2	
38	3380516	Panel, Cladder Valve Cover (S/N 116736 to Present)	2	
39	4751400	Flatwasher 1/4" (S/N 116736 to Present)	8	
40	0641414	Bolt 1/4"=20NC x 1 3/4" (S/N 116736 to Present)	4	

EASI-CLADDER™ PLUS

FIG & ITEM #	PART NUMBER	DESCRIPTION	QTY.	REV.
	0273216	DECALS INSTALLATION	Ref.	C
101	1704905	Decal - No Pressure Wash	2	
102	1705730	Decal - Capacity	2	
103	1705731	Decal - Centering	2	
104	1705732	Decal - Inspect Vacuum Pads	2	
105	1705746	Decal - Easi-Cladder Plus	2	
106	4420051	Tape, Safety	8.5ft/2.6m	
107	4420077	Tape, Hazard	20ft/6.1m	
108	1701509	Decal, Manual (S/N 115825 to Present)	1	
	0273061	VALVE INSTALLATION	Ref.	C
201	0641406	Bolt 1/4"-20NC x 3/4"	6	
202 to 206	Not Used			
207	3311405	Locknut 1/4"-20NC	6	
208	3311505	Locknut 5/16"-18NC	8	
209	4641271	Valve, Easi-Cladder Plus	1	
210	Not Used			
211	4711500	Flatwasher 5/16"	8	
212 to 213	Not Used			
214	0641516	Bolt 5/16"-18NC x 2"	4	
215	1671119	Cover, Hose/Wire	2	
216	4191706	Screw, Metric 6mm x 12mm	2	
217	0140043	Alarm	1	
218	0860520	Box, Manual Storage	1	
219	4751400	Flatwasher 1/4"	12	
220	0641528	Bolt 5/16"-18NC x 3 1/2"	4	

FIG & ITEM #	PART NUMBER	DESCRIPTION	QTY.	REV.

EASI-CLADDER™ PLUS

PARTS

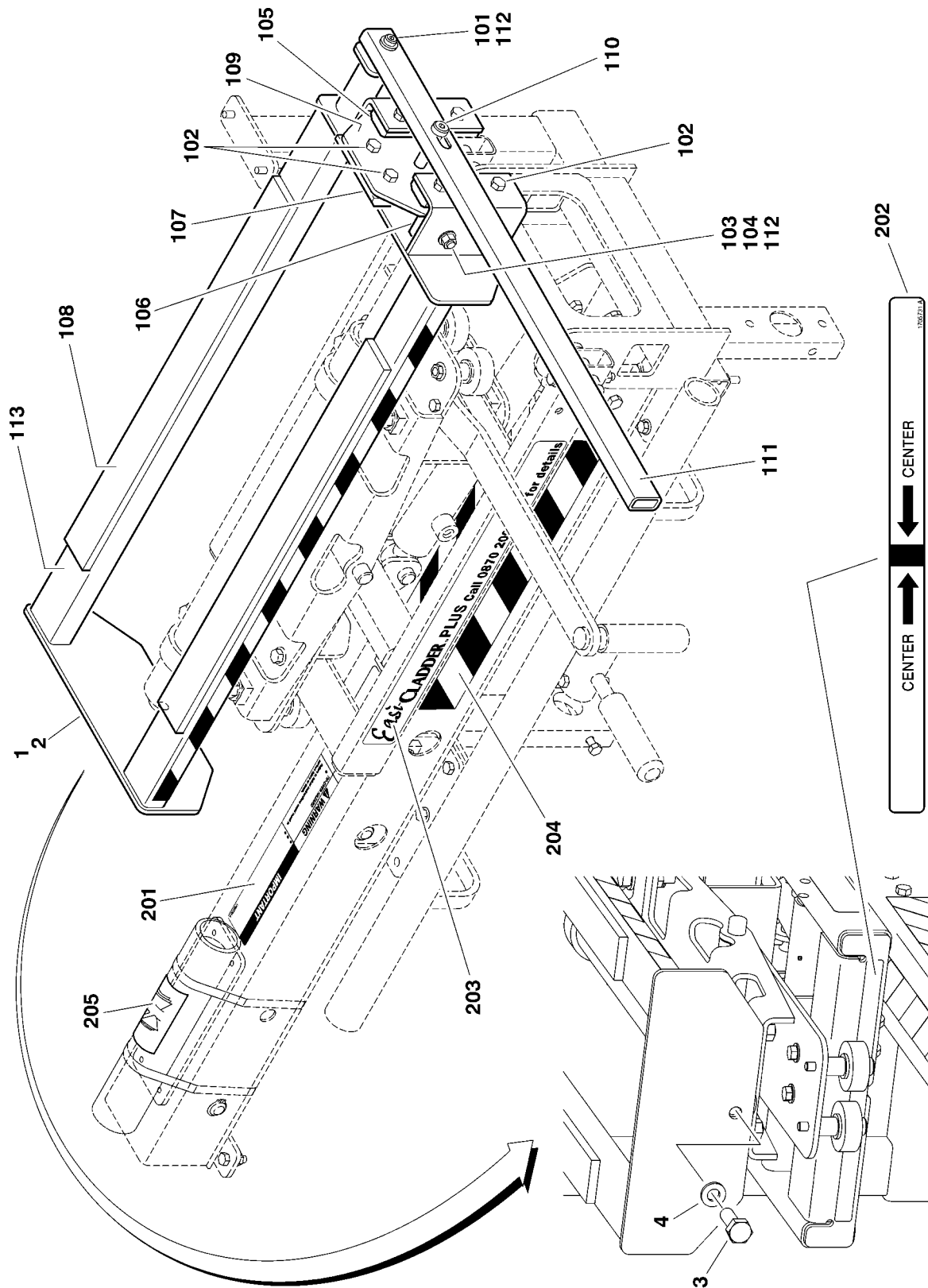


Figure 14. Easi-Cladder™ Plus Mechanical Arms Parts Drawing

FIG & ITEM #	PART NUMBER	DESCRIPTION	QTY.	REV.
Figure 14.	0273044	EASI-CLADDER PLUS MECHANICAL ARMS PARTS COMPONENTS	Ref.	A
1	0273002	Mechanical Arm Assembly (Left) (See Items 101-113 For Breakdown)	1	
2	0273007	Mechanical Arm Assembly (Right) (See Items 101-113 For Breakdown)	1	
3	0691810	Bolt 1/2"-24NF x 1 1/4"	4	
4	4891800	Flatwasher 12" Hardened	4	
		MECHANICAL ARM ASSEMBLIES	Ref.	
	0273002	Left Arm Assembly	Ref.	A
	0273007	Right Arm Assembly	Ref.	A
		Note: Qty shown is for one arm.	Ref	
101	0630179	Screw, Shoulder	1	
102	0641605	Bolt 3/8"-16NC x 5/8"	6	
103	0341609	Bolt 3/8"-16NC x 1 1/8"	4	
104	3311601	Nut 3/8"-16NC	4	
105	3340608	Pad, Wear	2	
106	3340843	Pad, Wear	2	
107	3340852	Pad, Wear	1	
108	3340972	Pad, Trolley	2	
109	3574424	Plate, Slide	1	
110	3900273	Bolt, Shoulder 1/2" x 2"	1	
111	4568778	Lever	1	
112	4711600	Flatwasher 3/8" Narrow	7	
113		Tray, Support Options:	1	
	4846853	Left Arm		
	4846854	Right Arm		
	0273269	DECALS INSTALLATION	Ref.	B
201	1705730	Decal - Capacity	2	
202	1705731	Decal - Centering	2	
203	1705746	Decal - Easi-Cladder Plus	2	
204	4420051	Tape, Safety	8.5ft/2.6m	
205	1701509	Decal - Manual (S/N 115825 to Present)	1	
206	4420877	Tape, Safety (Not Shown - Located On Tube Stop) (S/N 115825 to Present)	10ft/3.0m	

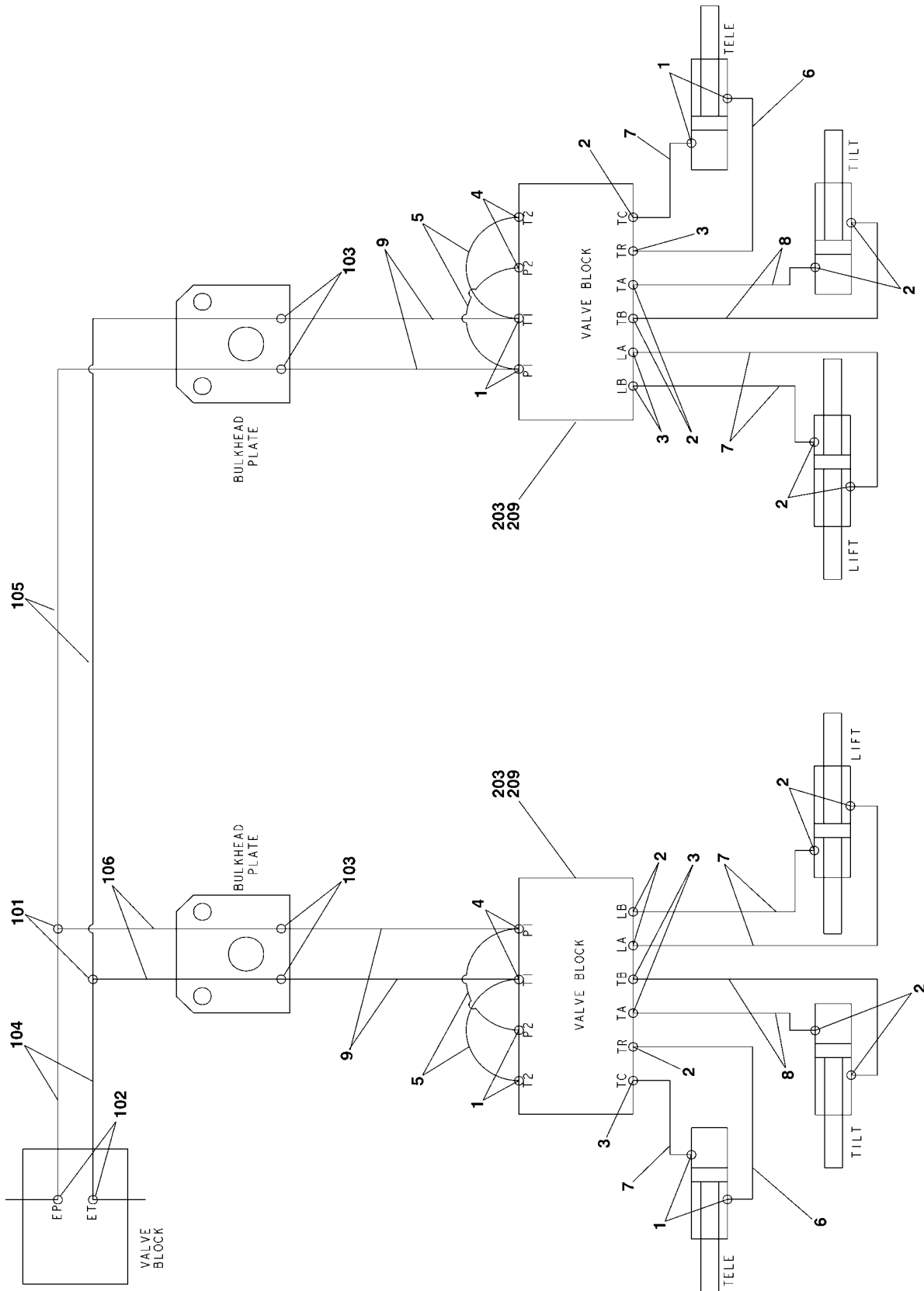


Figure 15. Easi-Cladder™ Plus Hydraulic Diagram Parts Drawing - 3394RT & 4394RT

FIG & ITEM #	PART NUMBER	DESCRIPTION	QTY.	REV.
Figure 15.		EASI-CLADDER PLUS HYDRAULIC DIAGRAM PARTS COMPONENTS	Ref.	
	2792602	HYDRAULIC DIAGRAM (ABOVE DECK)	Ref.	B
1	2220415	Fitting, Straight	8	
2	2220466	Fitting, 90°	14	
3	2220940	Fitting, 90°	6	
4	2221034	Fitting, Tee	4	
5	2752444	Hose	4	
6	2752591	Hose	2	
7	2752603	Hose	6	
8	2752983	Hose	4	
9	2752984	Hose	4	
	2902277	BELOW DECK PREP KIT	Ref.	1
	2792609	HYDRAULIC DIAGRAM (BELOW DECK)	Ref.	A
101	2170506	Fitting, Tee	2	
102	2170706	Fitting, Tee	2	
103	2230021	Fitting, Bulkhead	4	
104	2753727	Hose	2	
105	2753910	Hose	2	
106	2753911	Hose	2	
	0273061	VALVE INSTALLATION	Ref.	C
201 to 202	Not Used			
203	0641508	Bolt 5/16"-18NC x 1"	4	
204 to 208	Not Used			
209	4641271	Valve Assembly	2	

EASI-CLADDER™ PLUS

PARTS/HYDRAULIC DIAGRAM

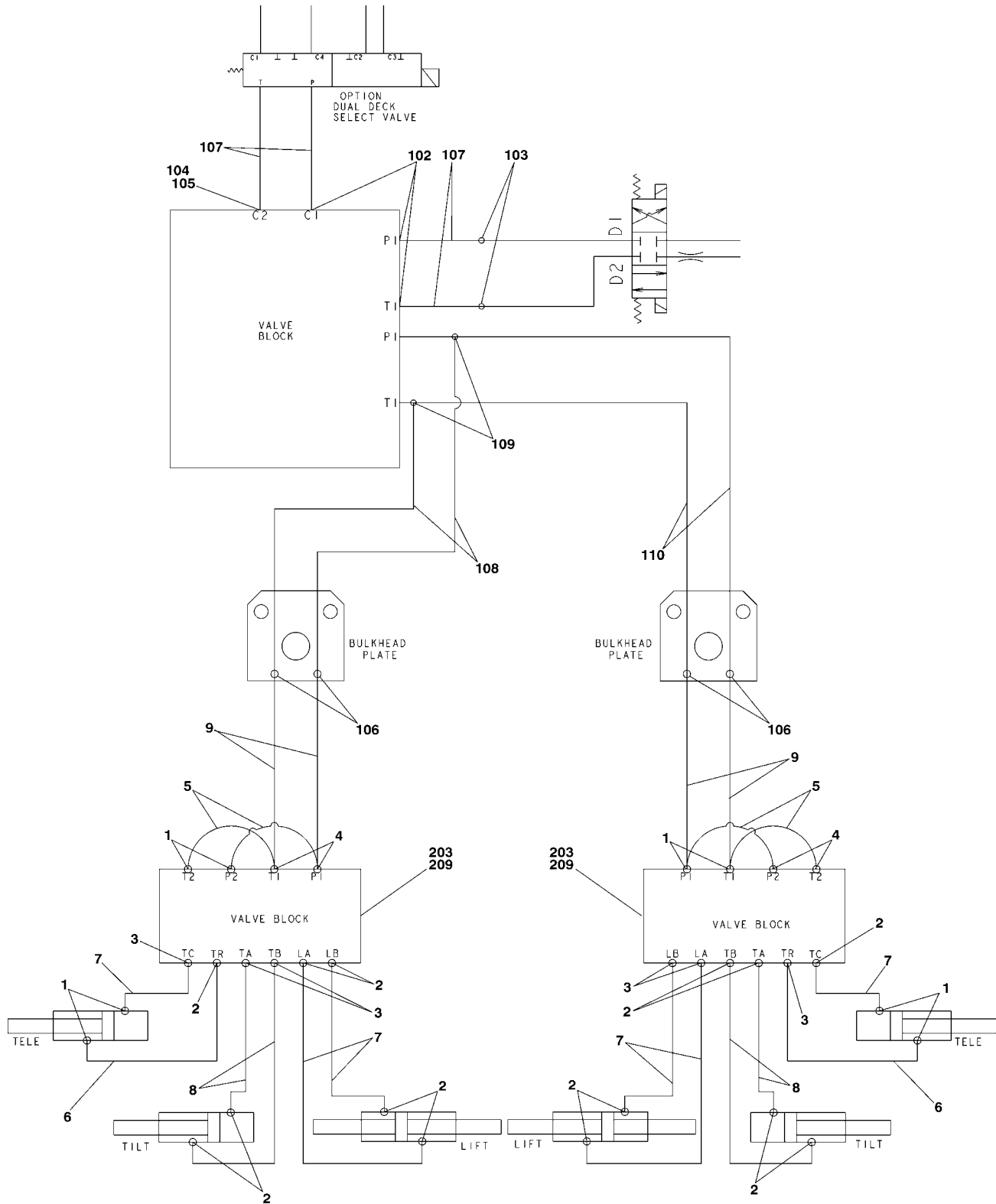
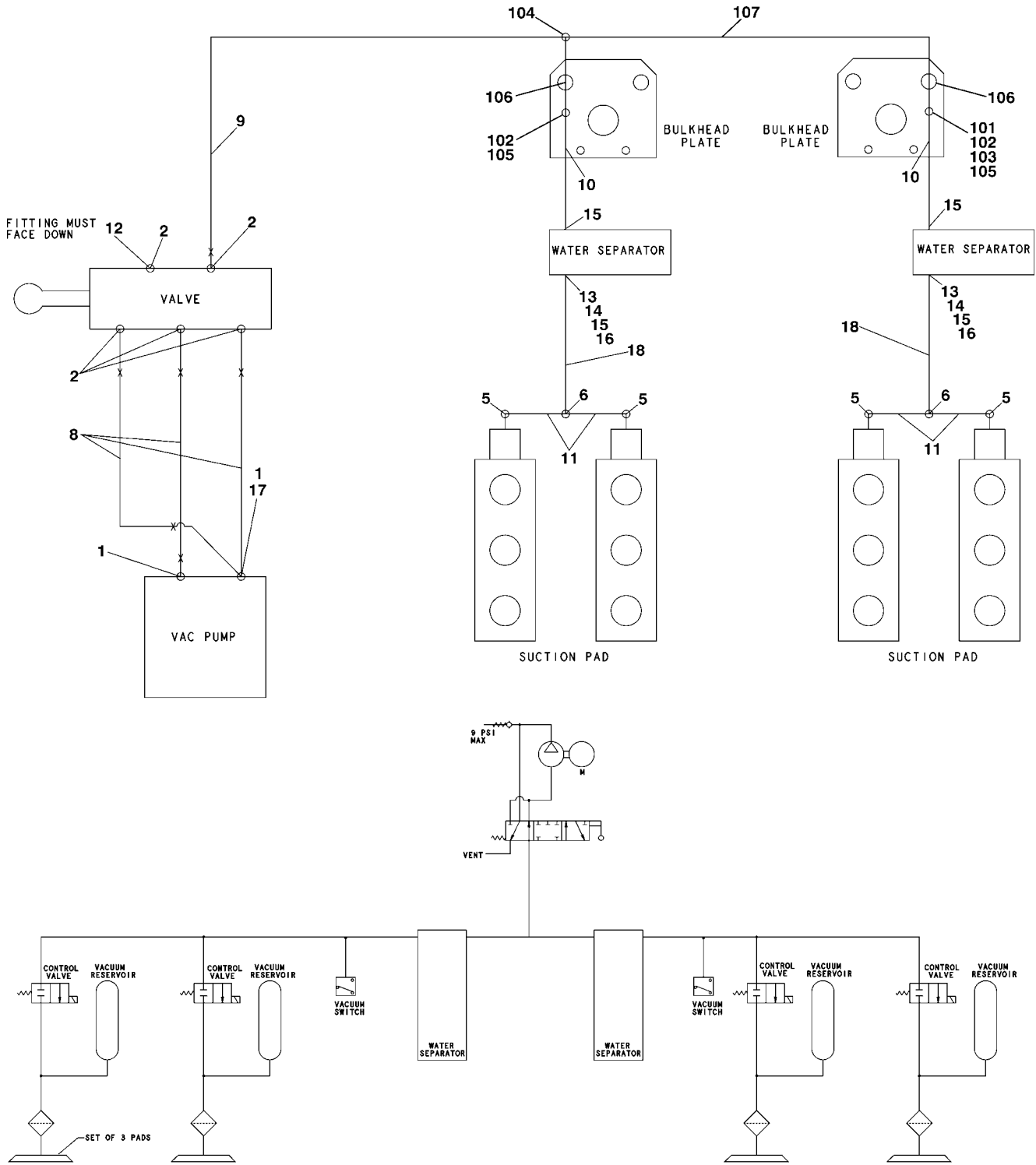


Figure 16. Easi-Cladder™ Plus Hydraulic Diagram Parts Drawing - 500RTS

FIG & ITEM #	PART NUMBER	DESCRIPTION	QTY.	REV.
Figure 16.		EASI-CLADDER PLUS HYDRAULIC DIAGRAM PARTS COMPONENTS	Ref.	
	2792602	HYDRAULIC DIAGRAM (ABOVE DECK)	Ref.	B
1	2220415	Fitting, Straight	8	
2	2220466	Fitting, 90°	14	
3	2220940	Fitting, 90°	6	
4	2221034	Fitting, Tee	4	
5	2752444	Hose	4	
6	2752591	Hose	2	
7	2752603	Hose	6	
8	2752983	Hose	4	
9	2752984	Hose	4	
	2902279	BELOW DECK PREP KIT	Ref.	1
	2792618	HYDRAULIC DIAGRAM (BELOW DECK)	Ref.	B
101	Not Used			
102	2220472	Fitting, 90°	3	
103	2220510	Fitting, Straight	2	
104	2220609	Fitting, Reducer	1	
105	2220819	Fitting, 90°	1	
106	2230021	Fitting, Bulkhead	4	
107	2753420	Hose	4	
108	2752603	Hose	2	
109	2221060	Fitting, Tee	2	
110	2753849	Hose	2	
	0273061	VALVE INSTALLATION	Ref.	C
201 to 202	Not Used			
203	0641508	Bolt 5/16"-18NC x 1"	4	
204 to 208	Not Used			
209	4641271	Valve Assembly	2	

EASI-CLADDER™ PLUS

PARTS/AIR SYSTEM DIAGRAM



2792604 C

Figure 17. Easi-Cladder™ Plus Air System Diagram Parts Drawing

FIG & ITEM #	PART NUMBER	DESCRIPTION	QTY.	REV.
Figure 17.		EASI-CLADDER PLUS AIR SYSTEM PARTS COMPONENTS (VACUUM ARMS ONLY)	Ref.	
	2792603	HYDRAULIC DIAGRAM (ABOVE DECK)	Ref.	C
1		Fitting, Straight Options:	A/R	
	2220347	Prior to S/N 116736	1	
	2220406	S/N 116736 to Present	2	
2	2220406	Fitting, Straight	5	
3		Fitting, Tee	1	
	2220681	Prior to S/N 115825		
	2220708	S/N 115825 to Present		
4	2220696	Fitting, Reducer	1	
5	2221160	Fitting, 90°	4	
6	2221162	Fitting, Branch	2	
7	2753914	Hose (Prior to S/N 115825)	1	
8	2753915	Hose	3	
9	2753916	Hose	1	
10	2753917	Hose	2	
11	2753918	Hose	4	
12	2220578	Fitting (S/N 115825 to Present)	1	
13	2220444	Fitting, Tee (S/N 116736 to Present)	2	
14	2220250	Fitting, Reducer (S/N 116736 to Present)	2	
15	2221159	Fitting (S/N 116736 to Present)	4	
16	4360547	Switch, Vacuum (S/N 116736 to Present)	2	
17	2220682	Fitting, Tee (S/N 116736 to Present)	1	
18	2720517	Hose (S/N 116736 to Present)	2	
	2902277	BELOW DECK PREP KIT - 3394RT & 4394RT	Ref.	1
	2902279	BELOW DECK PREP KIT - 500RTS	Ref.	2
	2792610	HYDRAULIC DIAGRAM (BELOW DECK)	Ref.	C
101	2220250	Fitting, Reducer (Prior to S/N 116736)	1	
102	2220269	Fitting, Reducer	2	
103	2220444	Fitting, Tee (Prior to S/N 116736)	1	
104	2220700	Fitting, Tee	2	
105	2221159	Fitting, Male Connector	2	
106	2221163	Fitting, Female Bulkhead	2	
107	2753913	Hose	1	

PARTS

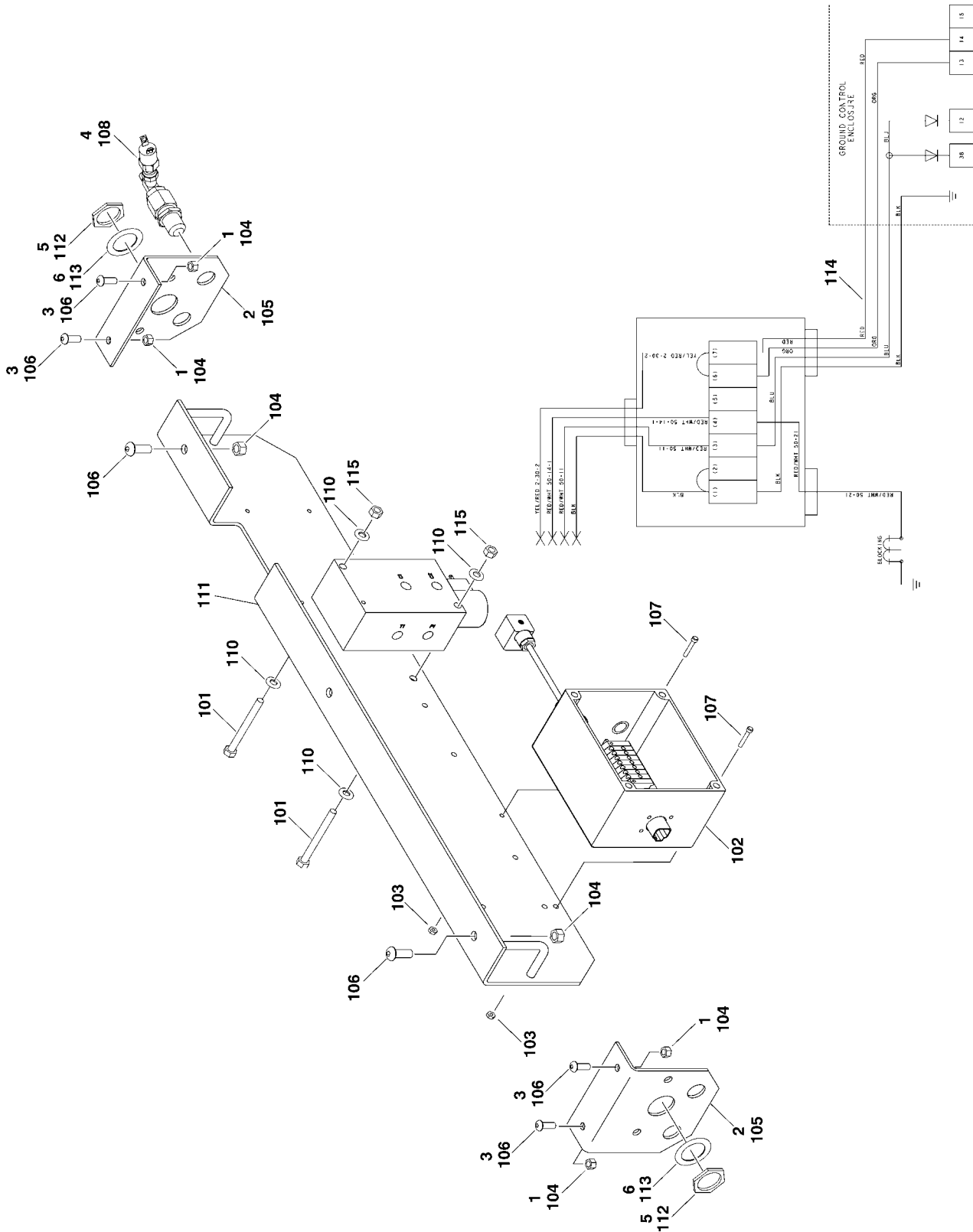


Figure 18. Easi-Cladder™ Plus Bulkhead & Vacuum Switch Diagram Parts

FIG & ITEM #	PART NUMBER	DESCRIPTION	QTY.	REV.
Figure 18.		EASI-CLADDER PLUS BULKHEAD & VACUUM SWITCH PARTS COMPONENTS (VACUUM ARMS ONLY)	Ref.	
	0273271	BULKHEAD PLATE & VACUUM SWITCH VALVE INSTALLATION - 3394RT & 4394RT	Ref.	C
1	3311605	Locknut 3/8"-16NC	4	
2	3573854	Plate, Bulkhead	2	
3	3900316	Screw 3/8"-16NC x 1"	4	
4	4360547	Switch, Vacuum	1	
5	4460470	Terminal, Nut (S/N 115825 to Present)	2	
6	4460471	Terminal, Lockwasher (S/N 115825 to Present)	2	
	0273302	BULKHEAD PLATE & VACUUM SWITCH VALVE INSTALLATION - 500RTS	Ref.	D
101	0641526	Bolt 5/16"-18NC x 3 1/4"	2	
102	0861635	Box, Junction	1	
103	3310805	Locknut #8-32NC	4	
104	3311605	Locknut 3/8"-16NC	7	
105	3573854	Plate, Bulkhead	2	
106	3900316	Screw 3/8"-16NC x 1"	7	
107	3930816	Screw #8-32NC x 1"	4	
108	4360547	Switch, Vacuum	1	
109	4641295	Valve Assembly	1	
110	4711500	Flatwasher 5/16"	4	
111	4846674	Bracket	1	
112	4460470	Terminal, Nut	2	
113	4460471	Terminal, Lockwasher	2	
114	1870171	Schematic, Electrical	1	
115	3311505	Locknut 5/16"-18NC	2	

EASI-CLADDER™ PLUS

PARTS/ELECTRICAL

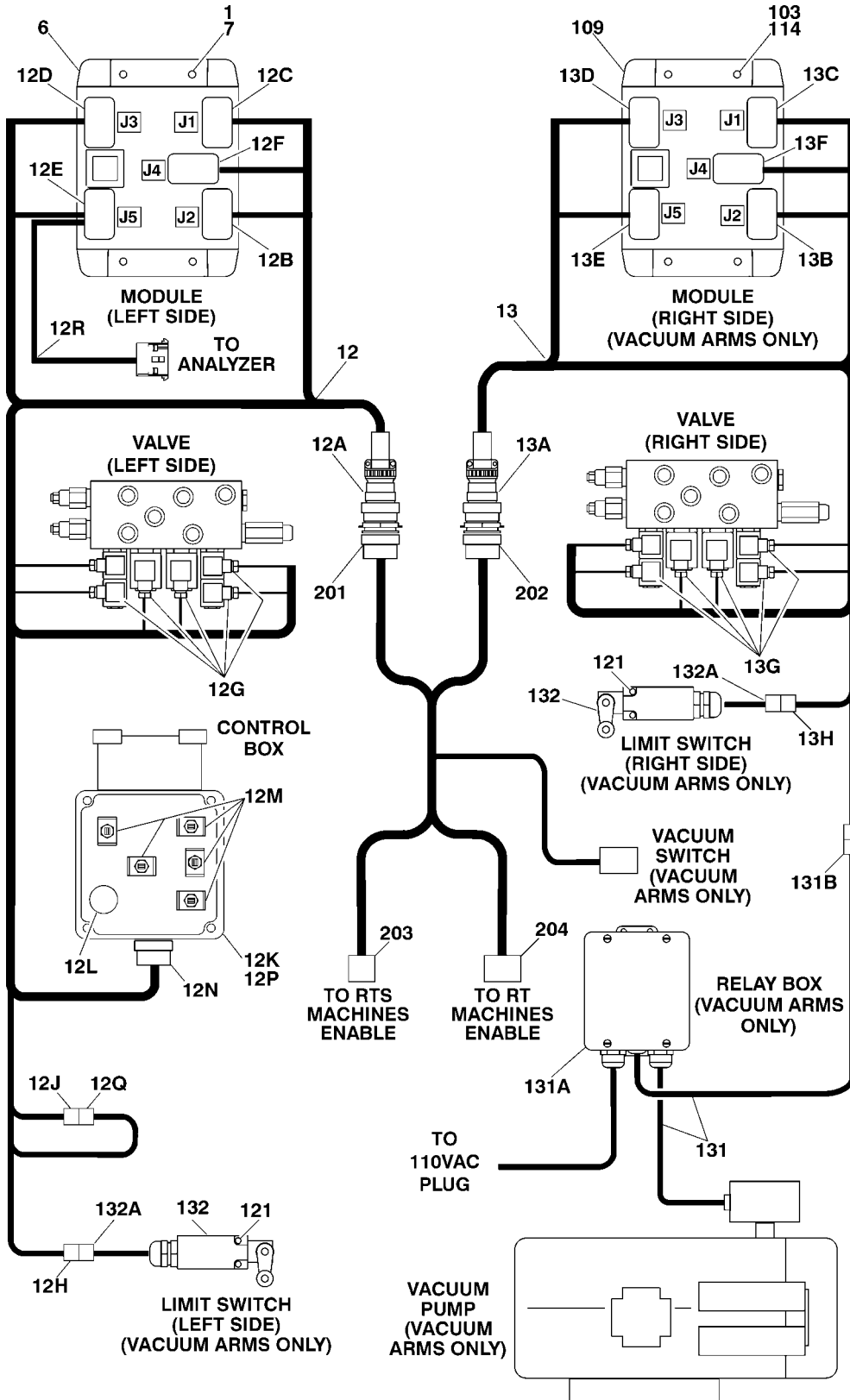


Figure 19. Easi-Cladder™ Plus Electrical Components Parts Drawing

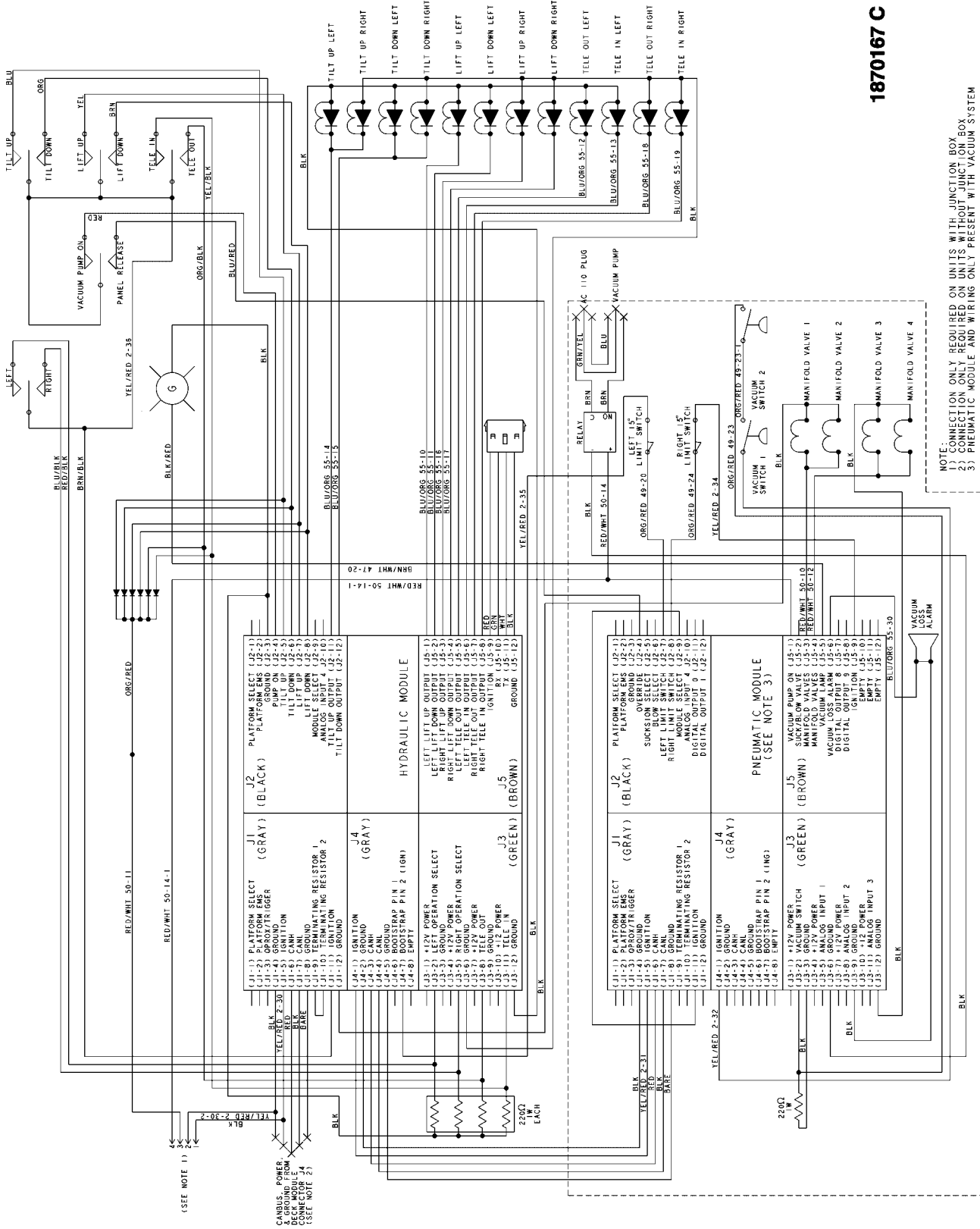
FIG & ITEM #	PART NUMBER	DESCRIPTION	QTY.	REV.
Figure 19.		EASI-CLADDER PLUS ELECTRICAL PARTS COMPONENTS	Ref.	
	0273061	ELECTRICAL MODULE AND HARNESS INSTALLATION	Ref.	C
1	0641406	Bolt 1/4"-20NC x 3/4"	4	
2 to 5	Not Used			
6	1600356	Module, Controller	1	
7	3311405	Locknut 1/4"-20NC	4	
8 to 11	Not Used			
12	4922919	Arms Harness (Left Side)	1	C
12A	4460502	Receptacle, Female - 31 Position	1	
	4460466	Plug, Sealing	7	
	4460465	Socket, Female	24	
	4460473	Clamp, Terminal	1	
12B	4460836	Plug, Male - 12 Position (Black)	1	
	4460466	Plug, Sealing	4	
	4460465	Socket, Female	8	
	0840055	Boot	1	
12C	4460933	Plug, Male - 12 Position (Gray)	1	
	4460466	Plug, Sealing	3	
	4460465	Socket, Female	9	
	0840055	Boot	1	
12D	4460934	Plug, Male - 12 Position (Green)	1	
	4460466	Plug, Sealing	6	
	4460465	Socket, Female	6	
	0840055	Boot	1	
12E	4460935	Plug, Male - 12 Position (Brown)	1	
	4460466	Plug, Sealing	3	
	4460465	Socket, Female	9	
	0840055	Boot	1	
12F	4460930	Plug, Male - 8 Position	1	
	4460466	Plug, Sealing	3	
	4460465	Socket, Female	5	
	0840058	Boot	1	
12G	4460499	Connector, DIN	6	
12H	4460891	Plug, Male - 2 Position	1	
	4460465	Socket, Female	2	
12J	4460536	Receptacle, Female - 3 Position	1	
	4460464	Pin, Male	3	
12K	0861609	Box, Control	1	
	1705757	Decal, Front	1	
12L	2920108	Bulb, Light	1	
	2920141	Lamp, Indicator	1	
12M	4060906	Guard, Switch	5	
	4360328	Switch, Toggle	4	
	4360555	Switch, Toggle - Leverlock	1	
12N	4460071	Connector, Strain		
12P	4460259	Terminal	19	
	4460260	Housing, Terminal	19	

EASI-CLADDER™ PLUS

FIG & ITEM #	PART NUMBER	DESCRIPTION	QTY.	REV.
	3730001	Resistor	4	
	3990001	Diode	6	
12Q	4460539	Plug, Male - 3 Position	1	
	4460464	Pin, Male	3	
12R	4923019	Harness, Analyzer (S/N 115825 to Present)	1	
	1060698	Cable	1	
	4460465	Socket, Female	4	
	4460761	Housing	1	
	4460227	Pin, Male	4	
13	4922920	Arms Harness (Right Side)	1	C
13A	4460501	Receptacle, Female - 31 Position	1	
	4460466	Plug, Sealing	12	
	4460464	Pin, Male	19	
	4460473	Clamp, Terminal	1	
13B	4460836	Plug, Male - 12 Position (Black)	1	
	0840055	Boot	1	
	4460466	Plug, Sealing	8	
	4460465	Socket, Female	4	
13C	4460933	Plug, Male - 12 Position (Gray)	1	
	0840055	Boot	1	
	4460466	Plug, Sealing	6	
	4460465	Socket, Female	6	
13D	4460934	Plug, Male - 12 Position (Green)	1	
	0840055	Boot	1	
	4460466	Plug, Sealing	7	
	4460465	Socket, Female	5	
	3730001	Resistor	1	
13E	4460935	Plug, Male - 12 Position (Brown)	1	
	0840055	Boot	1	
	4460466	Plug, Sealing	7	
	4460465	Socket, Female	5	
13F	4460930	Plug, Male - 8 Position	1	
	0840058	Boot	1	
	4460466	Plug, Sealing	7	
	4460465	Socket, Female	1	
13G	4460499	Connector, DIN	6	
13H	4460891	Plug, Male - 2 Position	1	
	4460465	Socket, Female	2	
	0273043	ELECTRICAL MODULE AND HARNESS INSTALLATION	Ref.	E
101 to 102	Not Used			
103	0641406	Bolt 1/4"-20NC x 3/4"	4	
104 to 108	Not Used			
109	1600356	Module, Controller	1	
110 to 113	Not Used			
114	3311405	Locknut 1/4"-20NC	4	
115 to 120	Not Used			
121	3930828	Capscrew #8-32 CN x 1 3/4"	4	

FIG & ITEM #	PART NUMBER	DESCRIPTION	QTY.	REV.
122 to 130	Not Used			
131	4922928	Relay Harness	1	
	0100009	Sealant (Not Shown)	A/R	
	0100083	Grease, Heat Transfer (Not Shown)	A/R	
		Cable, Electrical 12/3 Options:	A/R	
	1060308	Prior to S/N 116736	11ft/3.4m	
	1060908	S/N 116736 to Present	24ft/7.4m	
131A		Box, Relay Mounting Options:	1	
	0861616	Prior to S/N 115825		
	0861632	S/N 115825 to Present		
		Relay, Vacuum Pump Options:	1	
	3740141	Prior to S/N 115825		
	3740142	S/N 115825 to Present		
	4750800	Flatwasher #8 Narrow	4	
	4460428	Connector, Strain Relief	A/R	
	4460598	Connector, Strain Relief (S/N 115825 to Present)	1	
131B	4460897	Receptacle, Female - 2 Position (Prior to S/N 115825)	1	
	4460464	Pin, Male (Prior to S/N 115825)	2	
132	4922934	Harness, Switch, Limit	2	
	Use 4360549	Switch, Limit (was p/n 4360322)	2	
	4460968	Connector, Strain Relief	2	
132A	4460897	Receptacle, Female - 2 Position	2	
	4460464	Pin, Male	4	
	2902277	BELOW DECK PREP KIT	Ref.	1
	4922918	Base Harness	Ref.	C
201	4460500	Plug, Male - 31 Position	1	
	4460466	Plug, Sealing	13	
	4460465	Socket, Female	18	
202	4460503	Plug, Male - 31 Position	1	
	4460466	Plug, Sealing	7	
	4460464	Pin, Male	24	
203	4460884	Plug, Male 4 Position	1	
	4460465	Socket, Female	4	
204	4460930	Plug, Male - 8 Position	1	
	0840058	Boot	1	
	4460466	Plug, Sealing	3	
	4460465	Socket, Female	5	

ELECTRICAL SCHEMATIC



1870167 C

NOTE:
 1) CONNECTION ONLY REQUIRED ON UNITS WITH JUNCTION BOX
 2) CONNECTION ONLY REQUIRED ON UNITS WITHOUT JUNCTION BOX
 3) PNEUMATIC MODULE AND WIRING ONLY PRESENT WITH VACUUM SYSTEM

Figure 20. Easi-Cladder™ Plus Electrical Schematic



Corporate Office
JLG Industries, Inc.
1 JLG Drive
McConnellsburg PA. 17233-9533
USA
Phone: (717) 485-5161
Fax: (717) 485-6417

JLG Worldwide Locations

JLG Industries (Australia)
P.O. Box 5119
11 Bolwarra Road
Port Macquarie
N.S.W. 2444
Australia
Phone: (61) 2 65 811111
Fax: (61) 2 65 810122

JLG Industries (UK)
Unit 12, Southside
Bredbury Park Industrial Estate
Bredbury
Stockport
SK6 2sP
England
Phone: (44) 870 200 7700
Fax: (44) 870 200 7711

JLG Deutschland GmbH
Max Planck Strasse 21
D-27721 Ritterhude/Ihlpohl
Bei Bremen
Germany
Phone: (49) 421 693 500
Fax: (49) 421 693 5035

JLG Industries (Italia)
Via Po. 22
20010 Pregnana Milanese - MI
Italy
Phone: (39) 02 9359 5210
Fax: (39) 02 9359 5845

JLG Latino Americana Ltda.
Rua Eng. Carlos Stevenson,
80-Suite 71
13092-310 Campinas-SP
Brazil
Phone: (55) 19 3295 0407
Fax: (55) 19 3295 1025

JLG Europe B.V.
Jupiterstraat 234
2132 HJ Foofddorp
The Netherlands
Phone: (31) 23 565 5665
Fax: (31) 23 557 2493

JLG Industries (Norge AS)
Sofeimyrveien 12
N-1412 Sofienyr
Norway
Phone: (47) 6682 2000
Fax: (47) 6682 2001

JLG Polska
Ul. Krolewska
00-060 Warszawa
Poland
Phone: (48) 91 4320 245
Fax: (48) 91 4358 200

JLG Industries (Europe)
Kilmartin Place,
Tannochside Park
Uddingston G71 5PH
Scotland
Phone: (44) 1 698 811005
Fax: (44) 1 698 811055

JLG Industries (Pty) Ltd.
Unit 1, 24 Industrial Complex
Herman Street
Meadowdale
Germiston
South Africa
Phone: (27) 11 453 1334
Fax: (27) 11 453 1342

Plataformas Elevadoras
JLG Iberica, S.L.
Trapadella, 2
P.I. Castellbisbal Sur
08755Castellbisbal
Spain
Phone: (34) 93 77 24700
Fax: (34) 93 77 11762

JLG Industries (Sweden)
Enkopingsvagen 150
Box 704
SE - 175 27 Jarfalla
Sweden
Phone: (46) 8 506 59500
Fax: (46) 8 506 59534
