



# Illustrated Parts Manual

## Models

### 830P

Prior to SN P900020775

P/N

**31222428**

June 15, 2024 - Rev C

**ANSI**



An Oshkosh Corporation Company



## **REVISION LOG**

April 1, 2023 - A - Original Issue of Manual (Edited to 1001252005 Rev G)

April 8, 2024 - B - Revised Manual (Edited to 1001252005 Rev H)

June 15, 2024 - C - Revised Manual (Edited to 1001252005 Rev H)

# GENERAL INFORMATION

**SECTION 6 CYLINDER**

**FIGURE 6-3. LIFT CYLINDER ASSEMBLY**

PG#      Model Designation      Manual #

**SECTION 6 CYLINDER**

**FIGURE 6-3. LIFT CYLINDER ASSEMBLY**

ITEM #	PART NUMBER	QTY.	DESCRIPTION	REV.
	1001140104	Ref	LIFT CYLINDER ASSEMBLY	B
1	0100011	AR	Compound, Locking	
2	0630535	3	Capscrew 1/4-20 x 1-1/8	
3	0791003	1	Screw #10-24 x 3/8	
4	0961897	1	Bushing, Tapered	
5	1320136	1	Clamp, Cable	
6	1663063	1	Head	
7	2220893	1	Plug, O-Ring	
8	2220885	2	Plug, O-Ring	
9	2220886	1	Plug, O-Ring	
10	3020039	AR	Lubricant	
11	3480282	1	Piston	
12	3760371	1	Ring, Washer	
13	3931420	8	Capscrew 1/4-20 x 1-1/4	
14	3931824	8	Capscrew 1/2-13 x 1-1/2	
15	3951003	1	Set screw #10-24 x 3/8	
16	4100099	1	Spacer	
17	4640999	1	Cartridge, Holding Valve (Non Vented)	
17	2900792		Kit, Seal - 4640999 Cartridge Valve	
18	4641248	1	Cartridge, Counterbalance Valve (Non Vented)	
18	70004186		Kit, Seal - 4641248 Cartridge Valve	
19	1001117991	1	Sensor, Cylinder Length	
20	1001118070	1	Cap, Retainer	
21	1001118084	1	Barrel	
21A	0961950	2	Bushing	
22	1001118086	1	Rod	
22A	0961950	2	Bushing	
100	1001139996	1	Kit, Seal (Includes Items 101-109)	
101	See Note	2	Ring, Wear (Note: Use p/n 1001139996)	
102	See Note	1	Ring, Back-Up (Note: Use p/n 1001139996)	
103	See Note	2	Ring, Lock (Note: Use p/n 1001139996)	
104	See Note	2	Ring, Back-Up (Note: Use p/n 1001139996)	
105	See Note	2	O-Ring (Note: Use p/n 1001139996)	
106	See Note	1	O-Ring (Note: Use p/n 1001139996)	
107	See Note	1	Seal (Note: Use p/n 1001139996)	
108	See Note	1	Wiper, Rod (Note: Use p/n 1001139996)	
109	See Note	2	Seal (Note: Use p/n 1001139996)	
200	1001119105	1	Kit, Sensor Magnet (Includes Items 201-203)	
201	See Note	NSS	Sleeve, Spacer (Note: Use p/n 1001119105)	
202	1001118066	1	Magnet, Sensor	
203	1001118069	1	Ring, Internal Retaining	

Manual #      Model Designation      PG#

## 1) MACHINE IDENTIFICATION

Machines are identified by model and in some cases a combination of models, serial number (SN) or regional standard (i.e. ANSI, CE, CSA). Components may also be identified by SN or manufacturer. Common components that may be identified by these characteristics are engines and hydraulic components.

## 2) PARTS MANUAL ORGANIZATION

Product information in this manual is organized under section titles. Frame, Cylinder, Hydraulic and Electrical are a few examples. Each section is organized by figure and page number. The information within the Figure is then organized by item number, part number, description and corresponding illustration(s).

## 3) TABLE OF CONTENTS

A table of contents is found toward the beginning of the manual. Figure number, description and page number are provided for quick reference to the page containing the related information.

## 4) RECOMMENDED SPARE PARTS

The Recommended Spare Parts, located near the end of the manual, reference most frequently used maintenance parts.

## 5) PART NUMBER INDEX

A numerical index listing all part numbers and the corresponding page number(s) appears at the back of the manual.

## GENERAL INFORMATION

### 6) NON-SERVICED PARTS

In some instances, it is necessary to display non-serviced parts, assemblies or installations. In the case of assemblies and installations there will be a Ref in the Qty column. In case of parts that are not available for service within assemblies or components, there will be a NSS (Not Sold Separately) or NLA (No Longer Available) listed in the Qty. column of the manual.

### 7) PARTS LIST ITEM NUMBERS

Numbers shown in the item# column correspond to numbers used in the associated illustration (s). Item numbers which are missing from the sequence in the parts list are not used on that page

### 8) INDENTED PARTS DESCRIPTION

An indented part description is included in the item under which it is indented.

### 9) ABB REVIATION AND SYMBOLS

AC.....	.. Alternating Current	LCD .....	.. Liquid Crystal Display
ADE.....	..Advanced Design Electronics	LED .....	.. Light Emitting Diodes
ANSI .....	..American National Standards Institute	LH.....	.. Left Hand
AR.....	..As Required	LSS .....	..Load Sensing System
ASSY .....	.. Assembly	M(m).....	.. Metric/Meter
AUX.....	..Auxiliary	MM (mm) .....	..Milimeter
AWG.....	..American WireGauge	mA.....	.. Miliamps
B/M.....	.. Bill of Material	NLA.....	..No Longer Available
CE.....	..European Conformity	NPT .....	.. National Pipe Threads
CCW .....	..Counter Clockwise	NSS .....	..Not So ld Separately
cm.....	..Centimeter	OD.....	..Outside Diameter
CW .....	..Clockwise	ORB.....	.. O-Ring Boss
CSA.....	..Canadian Standards Association	ORFS.....	.. O-Ring Face Seal
CYL.....	..Cylinder	OZ (oz) .....	..Ounces
DIA.....	..Diameter	PG .....	..Page
DC.....	..Direct Current	P/N.....	..Part Number
EMS .....	.. Emergency Stop	qt.....	..Quarts
ENG .....	..Engine	QTY.....	..Quantity
FT (ft).....	.. Feet	REF .....	..Reference
GA (Ga).....	..Gauge	REV .....	..Revision Level
HYD.....	..Hydraulic	RH.....	.. Right Hand
Hz.....	.. Hertz	SAE.....	.. Society of Automotive Engineers
ID.....	..Inside Diameter	SN.....	..Serial Number
in.....	..inches	SPEC(S).....	..Specifications
ISO .....	..International Organization for Standards	T/T.....	..Turntable
JIC.....	..Joint Industry Council	UGM .....	..Universal Ground Module
KG .....	..Kilogram	V.....	..Volts
L.....	..Liter	W.....	..Watts
LB.....	..Pounds	#.....	.. Number

### 10) ILLUSTRATION REFERENCE LETTERS

When necessary, illustrations may contain reference letters that are intended to track information (i. e. hoses, harnesses) from one point to another or to track visual enlargement of components to show details that may be located in another area on the illustration.

*Note: Due to continuous product improvements, JLG Industries, Inc. reserves the right to make specification changes without prior notification. Contact JLG Industries, Inc. for updated information.*



# TABLE OF CONTENTS

SECTION 1 - 830P SN P900000001 - P900004870 .....	9
FIGURE 1-1. FRAME INSTALLATION .....	10
FIGURE 1-2. ARM INSTALLATION.....	12
FIGURE 1-3. PLATFORM INSTALLATION .....	14
FIGURE 1-4. ELECTRICAL INSTALLATION .....	16
FIGURE 1-5. HYDRAULICS INSTALLATION .....	18
FIGURE 1-6. GROUND CONTROLS INSTALLTION .....	20
FIGURE 1-7. DECAL INSTALLATION (ANSI SPECS).....	22
FIGURE 1-8. DECAL INSTALLATION (CSA SPECS).....	24
FIGURE 1-9. DECAL INSTALLATION (BRAZIL SPECS).....	26
FIGURE 1-10. DECAL INSTALLATION (LATIN AMERICAN SPECS) .....	28
FIGURE 1-11. RECOMMENDED SERVICE PARTS STOCK .....	30
FIGURE 1-12. SPECIAL OPTIONS/ACCESSORIES/KITS .....	32
SECTION 2 - 830P SN P900005119 - P900013863 .....	33
FIGURE 2-1. FRAME INSTALLATION .....	34
FIGURE 2-2. ARM INSTALLATION.....	36
FIGURE 2-3. PLATFORM INSTALLATION .....	38
FIGURE 2-4. ELECTRICAL INSTALLATION .....	40
FIGURE 2-5. HYDRAULICS INSTALLATION .....	42
FIGURE 2-6. GROUND CONTROLS INSTALLATION .....	44
FIGURE 2-7. STOCK PICKER TRAY INSTALLATION .....	46
FIGURE 2-8. DECALS INSTALLATION (ANSI SPECS) .....	48
FIGURE 2-9. DECALS INSTALLATION (BRAZIL SPECS) .....	50
FIGURE 2-10. DECALS INSTALLATION (CSA SPECS) .....	52
FIGURE 2-11. DECALS INSTALLATION (LATIN AMERICAN SPECS).....	54
FIGURE 2-12. RECOMMENDED SERVICE PARTS STOCK .....	56
FIGURE 2-13. SPECIAL OPTIONS/ACCESSORIES/KITS .....	58
SECTION 3 - 830P SN P900013864 - P900020774 .....	59
FIGURE 3-1. FRAME INSTALLATION .....	60
FIGURE 3-2. ARM INSTALLATION.....	62
FIGURE 3-3. PLATFORM INSTALLATION .....	64
FIGURE 3-4. ELECTRICAL INSTALLATION .....	66
FIGURE 3-5. HYDRAULICS INSTALLATION .....	68
FIGURE 3-6. GROUND CONTROLS INSTALLATION.....	70
FIGURE 3-7. STOCK PICKER TRAY INSTALLATION .....	72
FIGURE 3-8. DECALS INSTALLATION (ANSI SPECS) .....	74
FIGURE 3-9. DECALS INSTALLATION (BRAZIL SPECS) .....	76
FIGURE 3-10. DECALS INSTALLATION (CSA SPECS) .....	78
FIGURE 3-11. DECALS INSTALLATION (LATIN AMERICAN SPECS).....	80
FIGURE 3-12. RECOMMENDED SERVICE PARTS STOCK .....	82
FIGURE 3-13. SPECIAL OPTIONS/ACCESSORIES/KITS .....	84
PART NUMBER INDEX .....	85

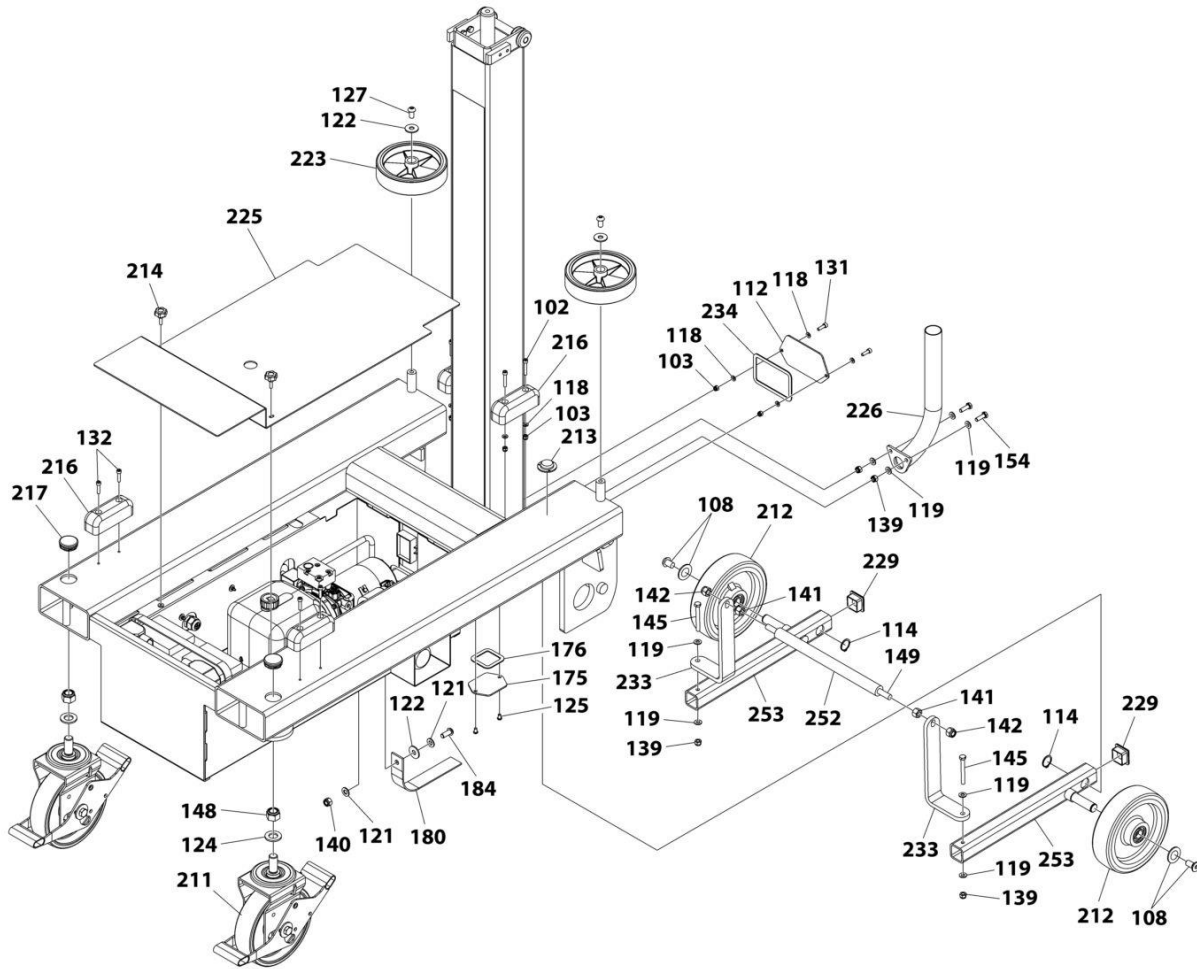




**SECTION 1 - 830P SN P900000001 - P900004870**

# SECTION 1 - 830P SN P900000001 - P90004870

## FIGURE 1-1. FRAME INSTALLATION



ART\_830P\_FRAME\_1

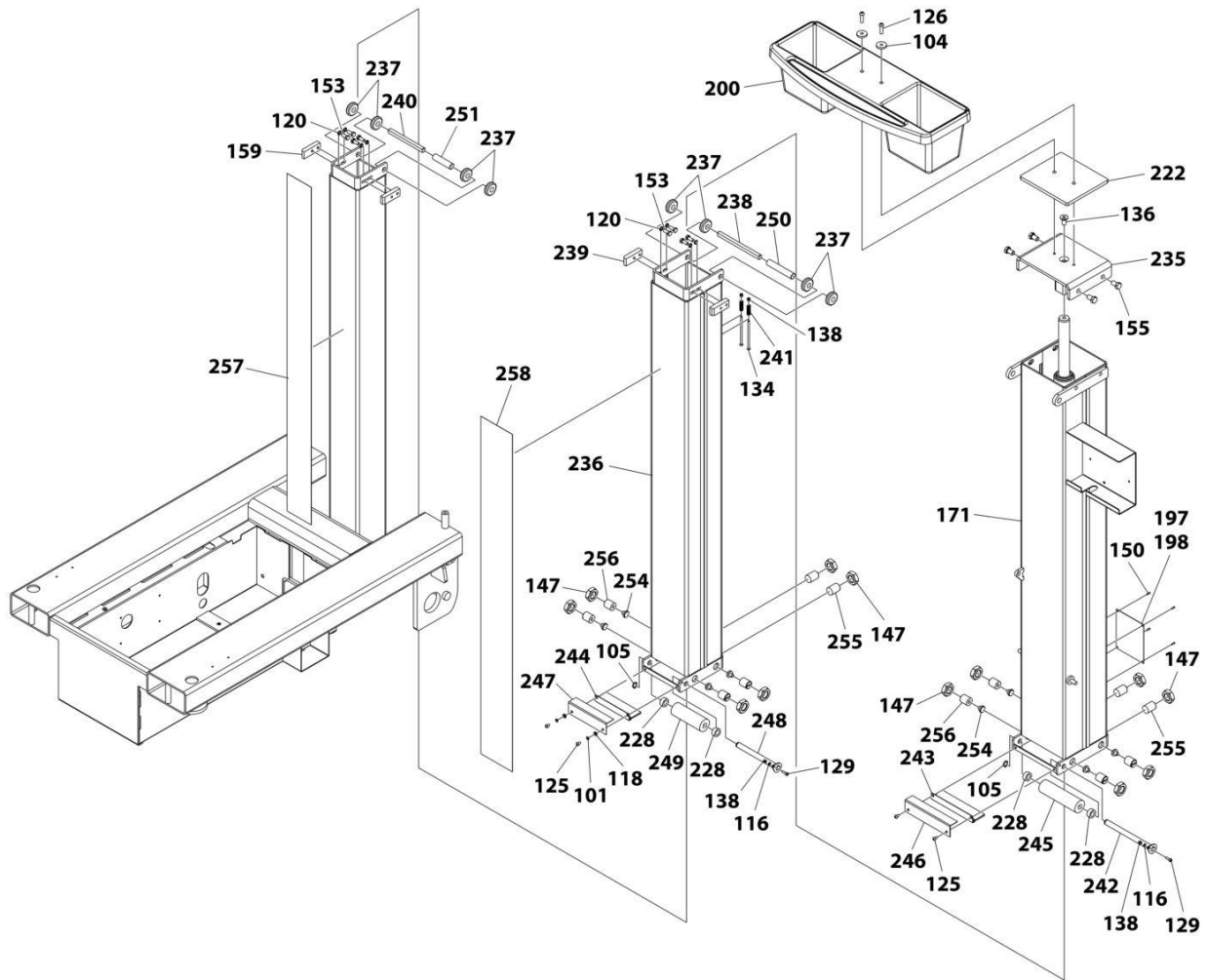
# SECTION 1 - 830P SN P900000001 - P900004870

## FIGURE 1-1. FRAME INSTALLATION

ITEM	PART NUMBER	QTY	DESCRIPTION	REV
102	1001264556	4	Bolt M6 x 35	
103	1001264557	6	Nut M6	
108	PTNM392C	2	Hardware Kit	
112	PTNM369	1	Cover, Spine End	
114	1001265108	2	Circlip	
118	1001265112	8	Washer M6	
119	1001265113	8	Washer M8	
121	1001265115	2	Washer M10	
122	1001265116	3	Washer M10	
124	1001265118	2	Washer 3/4	
125	1001265119	2	Bolt M6 x 10	
127	1001265122	2	Bolt M10 x 20	
131	1001265127	2	Bolt M6 x 20	
132	1001265128	4	Bolt M6 x 25	
139	1001265135	4	Nut M8	
140	1001265136	1	Nut M10	
141	1001265137	2	Nut M12	
142	1001265138	2	Nut M12	
145	1001265141	2	Bolt M8 x 70	
148	1001265147	2	Nut 3/4	
149	1001265148	1	Bar, Threaded M12	
154	1001265203	2	Bolt M8 x 25	
175	1001265946	1	Cover, Spine Bottom	
176	1001265947	1	Gasket, Spine Bottom Cover	
180	1001265952	1	Cable, Earthing	
184	1001265959	1	Bolt M10 x 25	
211	PTM1022	2	Castor - Swivel	
212	PTM103	2	Castor - Fixed	
213	PTM106	1	Level	
214	PTM107	2	Knob	
216	PTM126	4	Pad, Rest	
217	PTM163	2	Insert, Chassis	
223	PTNM302	2	Wheel, Buffer	
225	PTNM320JO	1	Lid, Chassis	
226	PTNM321JO	1	Tube, Guide	
229	PTNM332	2	Cap, End	
233	PTNM344	2	Bracket, Autobrake	
234	PTNM345	1	Gasket, Spine End Cover	
252	PTNM380	1	Roller, Brake	
253	PTNM385JO	2	Arm, Axle	

# SECTION 1 - 830P SN P900000001 - P900004870

## FIGURE 1-2. ARM INSTALLATION



ART\_830P\_ARM\_1

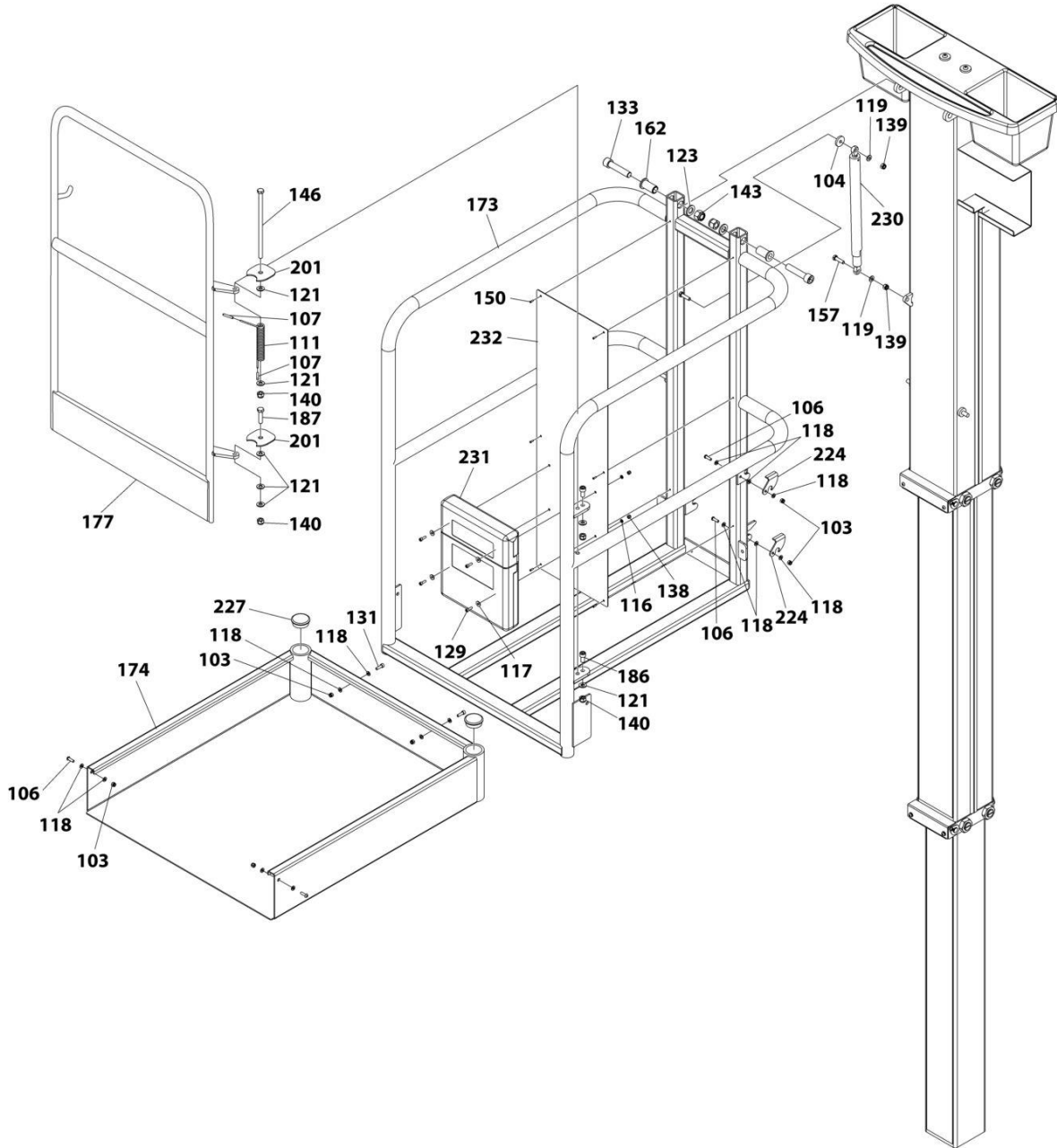
# SECTION 1 - 830P SN P900000001 - P900004870

## FIGURE 1-2. ARM INSTALLATION

ITEM	PART NUMBER	QTY	DESCRIPTION	REV
101	1001264555	2	Washer M6	
104	1001264558	2	Washer M8	
105	1001264559	2	Circlip	
116	1001265110	2	Washer M5	
118	1001265112	2	Washer M6	
120	1001265114	8	Washer M8	
125	1001265119	4	Bolt M6 x 10	
126	1001265121	2	Bolt M8 x 30	
129	1001265125	2	Bolt M5 x 16	
134	1001265130	2	Bolt M5 x 100	
136	1001265132	1	Bolt M12 x 25	
138	1001265134	4	Nut M5	
147	PTNM391	12	Nut M24	
150	1001265149	4	Rivet	
153	1001265202	8	Bolt M8 x 20	
155	1001265205	4	Bolt M12 x 20	
159	PTNM358	2	Pad, Wear	
171	PTNM329JC	1	Mast, Outer	
197	See Note	NSS	Specification Plate	
198	See Note	NSS	Specification Plate	
200	PELM405	1	Tray, Tool	
222	PTNM300	1	Spacer, Mast Cap	
228	PTNM330	4	Spacer	
235	PTNM348JC	1	Cap, Mast	
236	PTNM349JC	1	Mast, Middle	
237	PTNM356	8	Roller, Mast	
238	PTNM357	1	Axle	
239	PTNM358	2	Pad, Wear	
240	PTNM359	1	Axle	
241	PTNM360	2	Spring	
242	PTNM361	1	Axle	
243	PTNM363A	1	Brush	
244	PTNM363B	1	Brush	
245	PTNM364	1	Roller, Outer Mast	
246	PTNM365AJC	1	Cover, Roller	
247	PTNM365BJC	1	Cover, Roller	
248	PTNM366	1	Axle	
249	PTNM367	1	Roller, Mid Mast	
250	PTNM370	1	Spacer	
251	PTNM371	1	Spacer	
254	PTNM389	8	Insert, Wear Screw	
255	PTNM390	4	Screw, Plastic Wear	
256	PTNM390SS	8	Screw, Stainless Steel Wear	
257	PTNM393	1	Strip, Wear	
258	PTNM394	1	Strip, Wear	

SECTION 1 - 830P SN P900000001 - P900004870

FIGURE 1-3. PLATFORM INSTALLATION



ART\_830P\_PLATFORM\_1

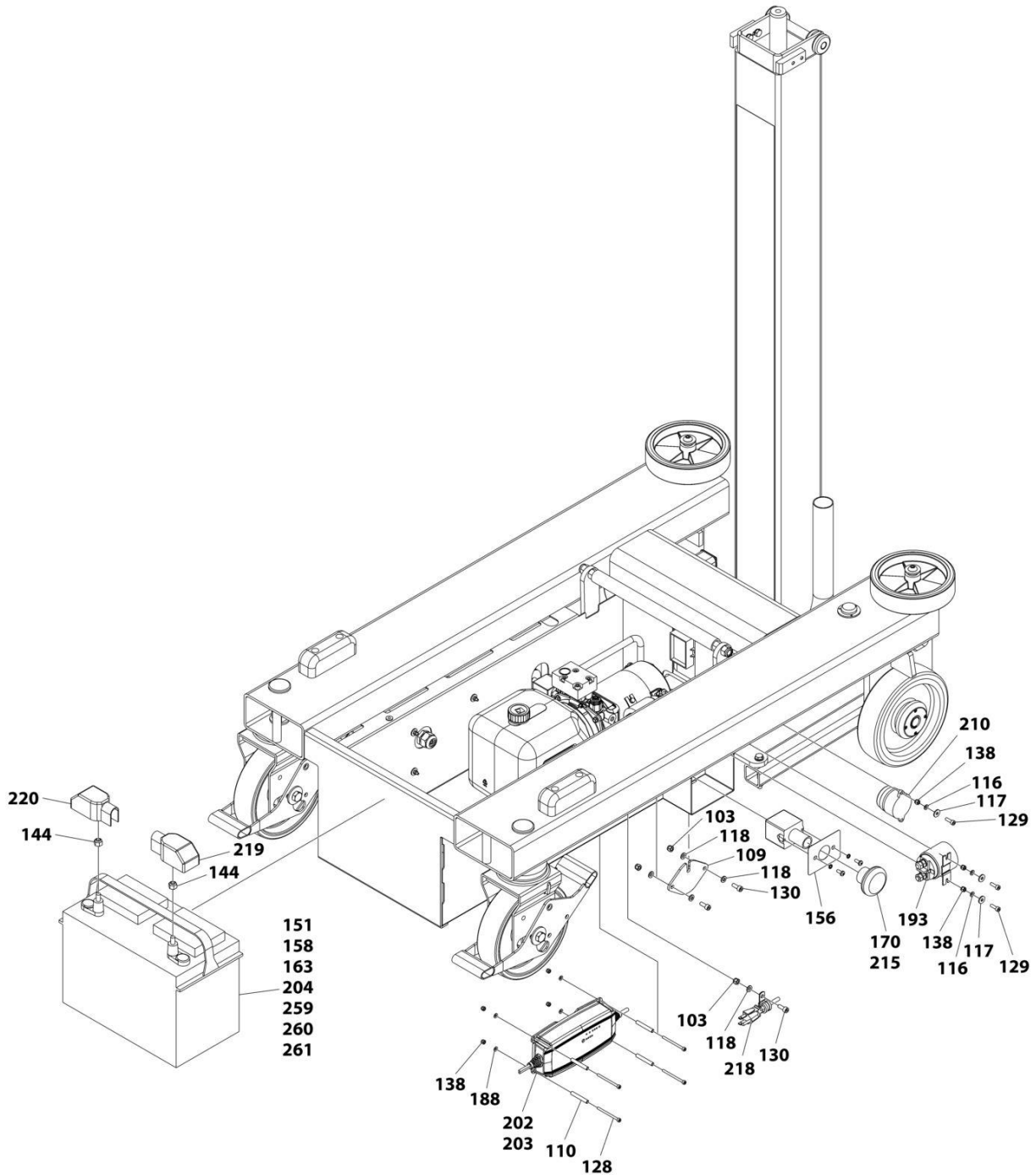
# SECTION 1 - 830P SN P900000001 - P900004870

## FIGURE 1-3. PLATFORM INSTALLATION

ITEM	PART NUMBER	QTY	DESCRIPTION	REV
103	1001264557	6	Nut M6	
104	1001264558	1	Washer M8	
106	1001264707	4	Bolt M6 x 20	
107	1001265092	2	Cap, Spring	
111	PTNM352	1	Spring, Gate	
116	1001265110	2	Washer M5	
117	1001265111	4	Washer M5	
118	1001265112	14	Washer M6	
119	1001265113	2	Washer M8	
121	1001265115	7	Washer M10	
123	1001265117	2	Washer M16	
129	1001265125	4	Bolt M5 x 16	
131	1001265127	2	Bolt M6 x 20	
133	1001265129	2	Bolt M16 x 75	
138	1001265134	2	Nut M5	
139	1001265135	2	Nut M8	
140	1001265136	4	Nut M10	
143	1001265139	2	Nut M16	
146	1001265144	1	Bolt M10 x 220	
150	1001265149	6	Rivet	
157	1001265233	1	Bolt M8 x 30	
162	PTNM305	2	Pivot, Platform	
173	PTNM350JO	1	Platform	
174	PTNM355	1	Tray, Platform	
177	PTNM351JO	1	Gate, Platform	
186	1001265961	2	Bolt M10 x 20	
187	1001265962	1	Bolt M10 x 40	
201	PELM430	2	Cover, Hinge	
224	PTM133	2	Latch, Platform	
227	PTNM323	2	Cap, End	
230	PTNM340	1	Strut	
231	PTNM342	1	Document Holder	
232	PTNM343	1	Plate, Platform Label	

# SECTION 1 - 830P SN P900000001 - P900004870

## FIGURE 1-4. ELECTRICAL INSTALLATION



ART\_830P\_ELECTRICAL\_1



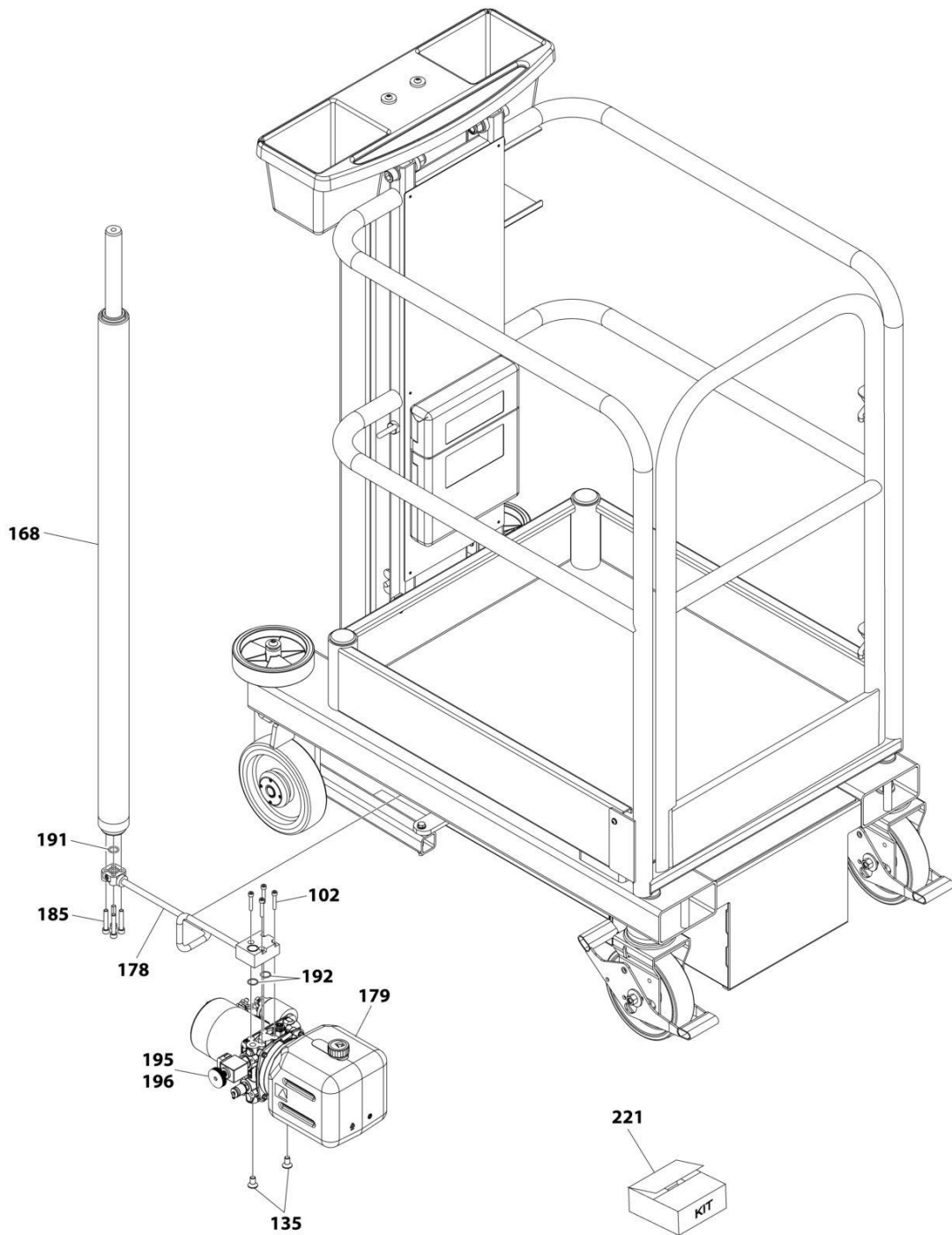
# SECTION 1 - 830P SN P900000001 - P900004870

## FIGURE 1-4. ELECTRICAL INSTALLATION

ITEM	PART NUMBER	QTY	DESCRIPTION	REV
103	1001264557	3	Nut M6	
109	1001265094	1	Cover, Charger Lead Hole	
110	1001265097	4	Tube, Charger Support	
116	1001265110	3	Washer M5	
117	1001265111	4	Washer M5	
118	1001265112	5	Washer M6	
128	1001265123	4	Bolt M4 x 55	
129	1001265125	4	Bolt M5 x 16	
130	1001265126	3	Bolt M6 x 16	
138	1001265134	8	Nut M5	
144	1001265140	2	Nut 5/16	
151	1001265150	1	Ring Connector	
156	1001265232	1	Decal, Emergency Stop	
158	1001265235	1	Tie Strap	
163	PTNE205	1	Battery Cable Kit	
170	PTNE200	1	Switch, Emergency Stop	
188	1001265963	4	Washer M4	
193	PTNH252	1	Solenoid	
202	1001220257	1	Charger, Battery - 110V	
203	PTE001	1	Charger, Battery - 230V	
204	1001220252	1	Battery - Standard	
210	PTE215	1	Siren, Power Pack	
215	PTNM341	1	Key, Replacement	
218	PTM172	1	Clip	
219	PTNE213	1	Cover, Battery Terminal - Blue/Black	
220	PTNE214	1	Cover, Battery Terminal - Red	
259	1001220253	1	Battery - AGM	
260	PTE002AGM	1	Battery	
261	1001269772	1	Battery - AGM Platinum	

**SECTION 1 - 830P SN P900000001 - P900004870**

**FIGURE 1-5. HYDRAULICS INSTALLATION**



ART\_830P\_HYDRAULICS\_1

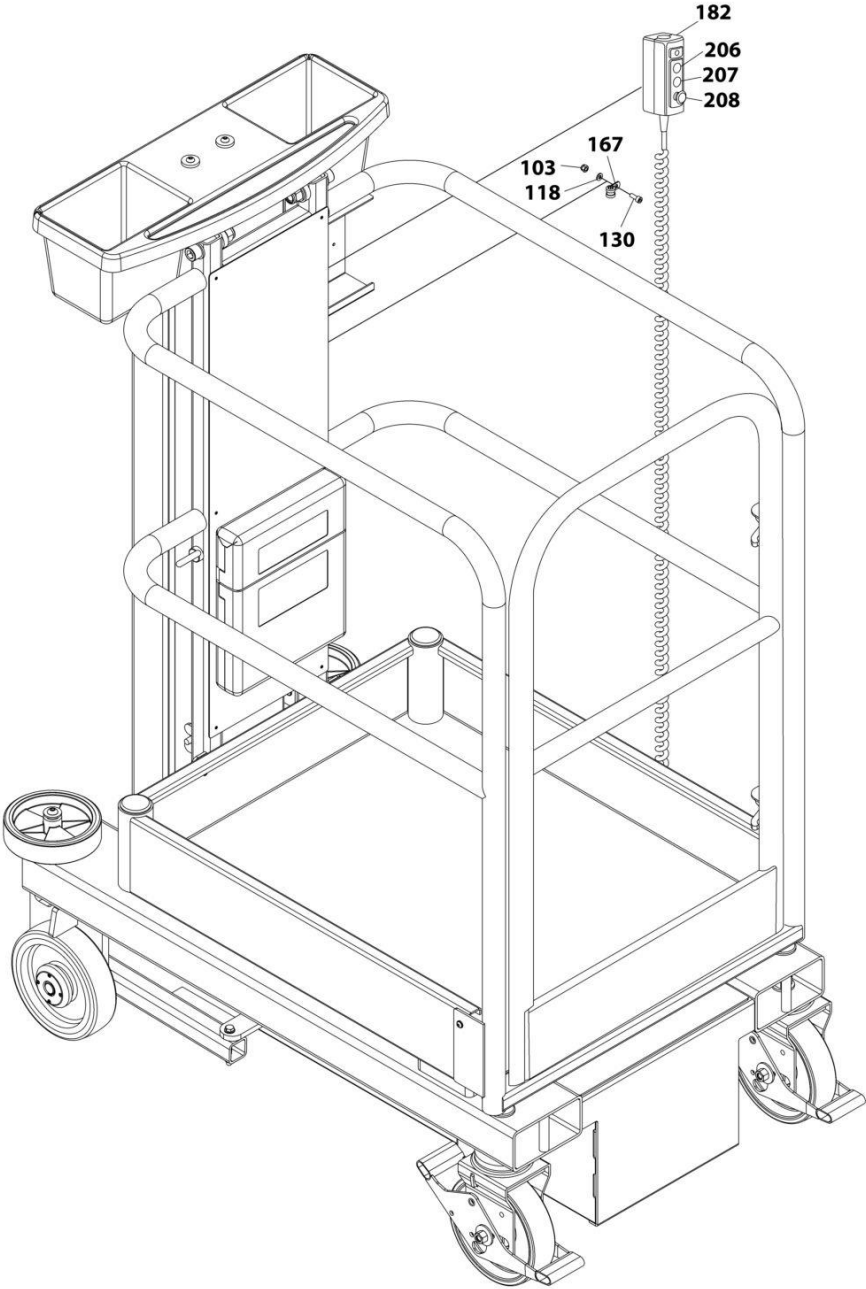
# SECTION 1 - 830P SN P900000001 - P900004870

## FIGURE 1-5. HYDRAULICS INSTALLATION

ITEM	PART NUMBER	QTY	DESCRIPTION	REV
102	1001264556	4	Bolt M6 x 35	
135	1001265131	2	Bolt M10 x 20	
168	PTNH276C	1	Cylinder	
178	PTNH260	1	Pipe, Hydraulic	
179	PTNH251	1	Power Pack	
185	1001265960	4	Bolt M8 x 45	
191	1001266745	1	O-Ring	
192	1001266747	2	O-Ring	
195	PTNH255	1	Valve, Powerpack Solenoid	
196	PTNH256	1	Valve, Emergency Lowering Cartridge	
221	PTNH277	1	Kit, Seal	

**SECTION 1 - 830P SN P90000001 - P90004870**

**FIGURE 1-6. GROUND CONTROLS INSTALLTION**



ART\_830P\_GROUND CONTROLS\_1

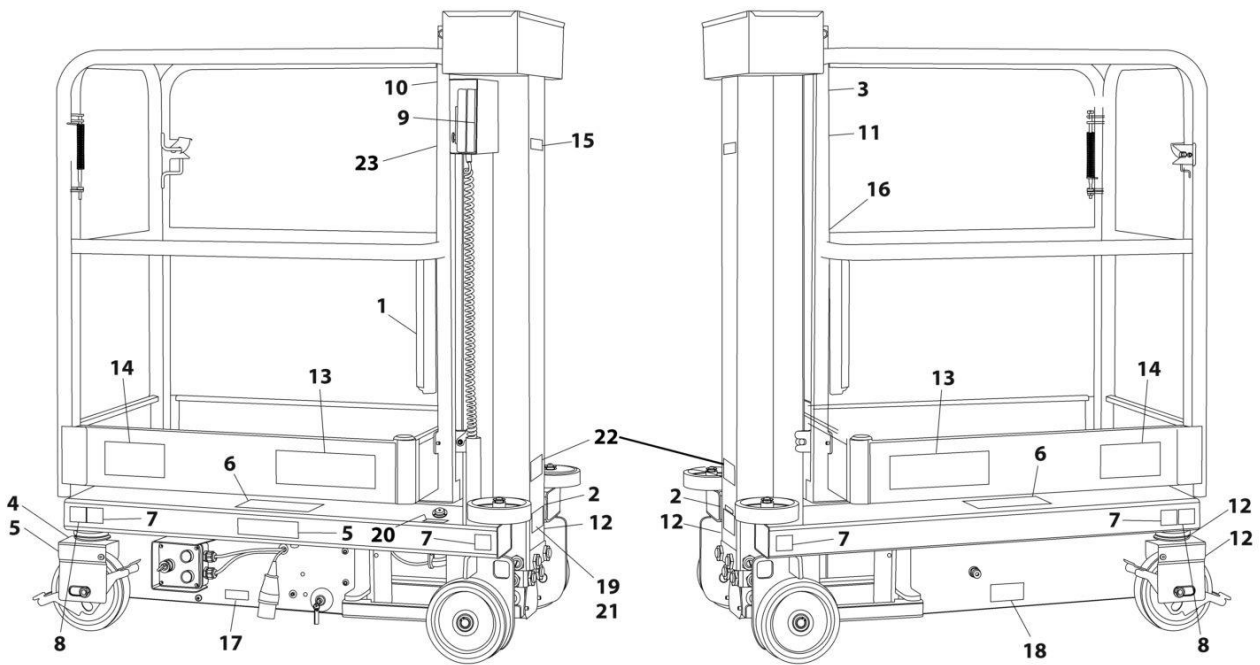
# SECTION 1 - 830P SN P900000001 - P900004870

## FIGURE 1-6. GROUND CONTROLS INSTALLTION

ITEM	PART NUMBER	QTY	DESCRIPTION	REV
103	1001264557	1	Nut M6	
118	1001265112	1	Washer M6	
130	1001265126	1	Bolt M6 x 16	
167	1001265913	1	Clip	
182	PTNE211	1	Controls, Platform	
206	PTNE202	1	Button, Platform Raise	
207	PTNE202	1	Button, Platform Lower	
208	PTNE204	1	Switch, Emergency Stop	

**SECTION 1 - 830P SN P90000001 - P90004870**

**FIGURE 1-7. DECAL INSTALLATION (ANSI SPECS)**



ART\_1001214198

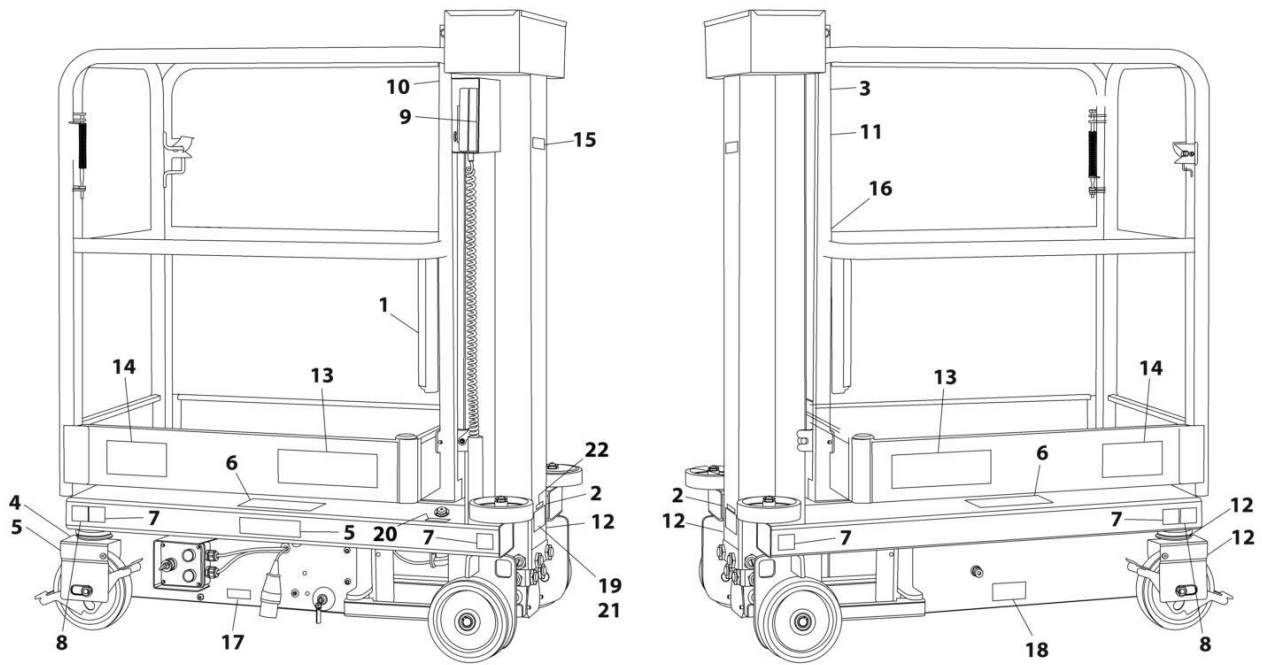
## SECTION 1 - 830P SN P900000001 - P900004870

### FIGURE 1-7. DECAL INSTALLATION (ANSI SPECS)

ITEM	PART NUMBER	QTY	DESCRIPTION	REV
	1001214198	Ref	DECAL INSTALLATION (ENGLISH)	C
1	1701509	1	Decal - Manual	
2	1703817	2	Decal - Fork Lift	
3	1703781	1	Decal - Electrocutation	
4	1702391	1	Decal - Hand Crushing	
5	1703813	2	Decal - Explosion	
6	1703786	2	Decal - Crushing	
7	1001213587	4	Decal - Wheel load	
8	1001213208	2	Decal - Caster Lock	
9	1001213490	1	Decal - Operator Controller	
10	1001213488	1	Decal - Capacity	
11	1001213946	1	Decal - Warning	
12	1001213442	4	Decal - Lifting/Tie Down	
13	1001213551	2	Decal - 830P	
14	1001214107	2	Decal - JLG	
15	1001214109	1	Decal - JLG	
16	1001213582	1	Decal - Lanyard	
17	3251243	1	Decal - 120v-60Hz	
18	1001214251	1	Decal - Emergency Lowering	
19	See Note	NSS	Nameplate - Manufacturers Serial Number (Note: Not Available for Purchase)	
20	1703789	1	Decal - Level Indicator	
21	3820001	4	Rivet	
22	1706351	1	Decal - CSA	
23	1001231801	1	Decal - Warning Prop 65 (SN P900003693 through P900004870)	

**SECTION 1 - 830P SN P900000001 - P900004870**

**FIGURE 1-8. DECAL INSTALLATION (CSA SPECS)**



ART\_1001215008



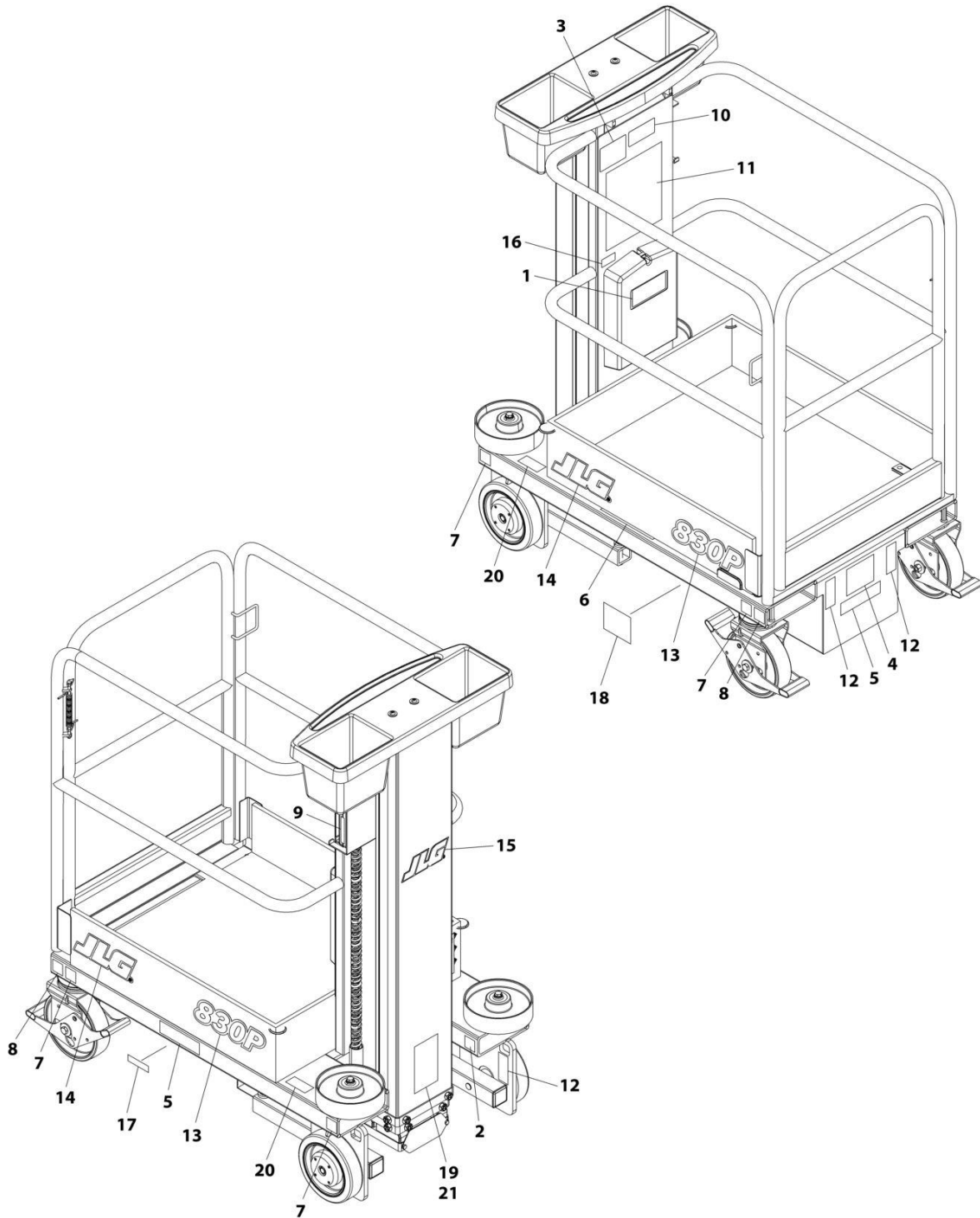
## SECTION 1 - 830P SN P900000001 - P900004870

### FIGURE 1-8. DECAL INSTALLATION (CSA SPECS)

ITEM	PART NUMBER	QTY	DESCRIPTION	REV
	1001215008	Ref	DECAL INSTALLATION (FRENCH/ENGLISH)	A
1	1701509	1	Decal - Manual	
2	1703817	2	Decal - Fork Lift	
3	1704795	1	Decal - Electrocutation	
4	1001215113	1	Decal - Hand Crushing	
5	1001215217	2	Decal - Explosion	
6	1704039	2	Decal - Crushing	
7	1001213587	4	Decal - Wheel Load	
8	1001213208	2	Decal - Caster Lock	
9	1001213490	1	Decal - Operator Controller	
10	1001213488	1	Decal - Capacity	
11	1001215006	1	Decal - Warning	
12	1001213442	4	Decal - Tie Down/Lift	
13	1001213551	2	Decal - Logo	
14	1001214107	2	Decal - JLG	
15	1001214109	1	Decal - JLG	
16	1001215009	1	Decal - Lanyard	
17	3251243	1	Decal - Decal 120V-60Hz	
18	1001215004	1	Decal - Emergency Lowering	
19	See Note	NSS	Nameplate - Manufacturers Serial Number (Note: Not Available for Purchase)	
20	1704041	1	Decal - Level Indicator	
21	3820001	4	Rivet	
22	1706351	1	Decal - CSA	

SECTION 1 - 830P SN P900000001 - P900004870

FIGURE 1-9. DECAL INSTALLATION (BRAZIL SPECS)



ART\_1001241789

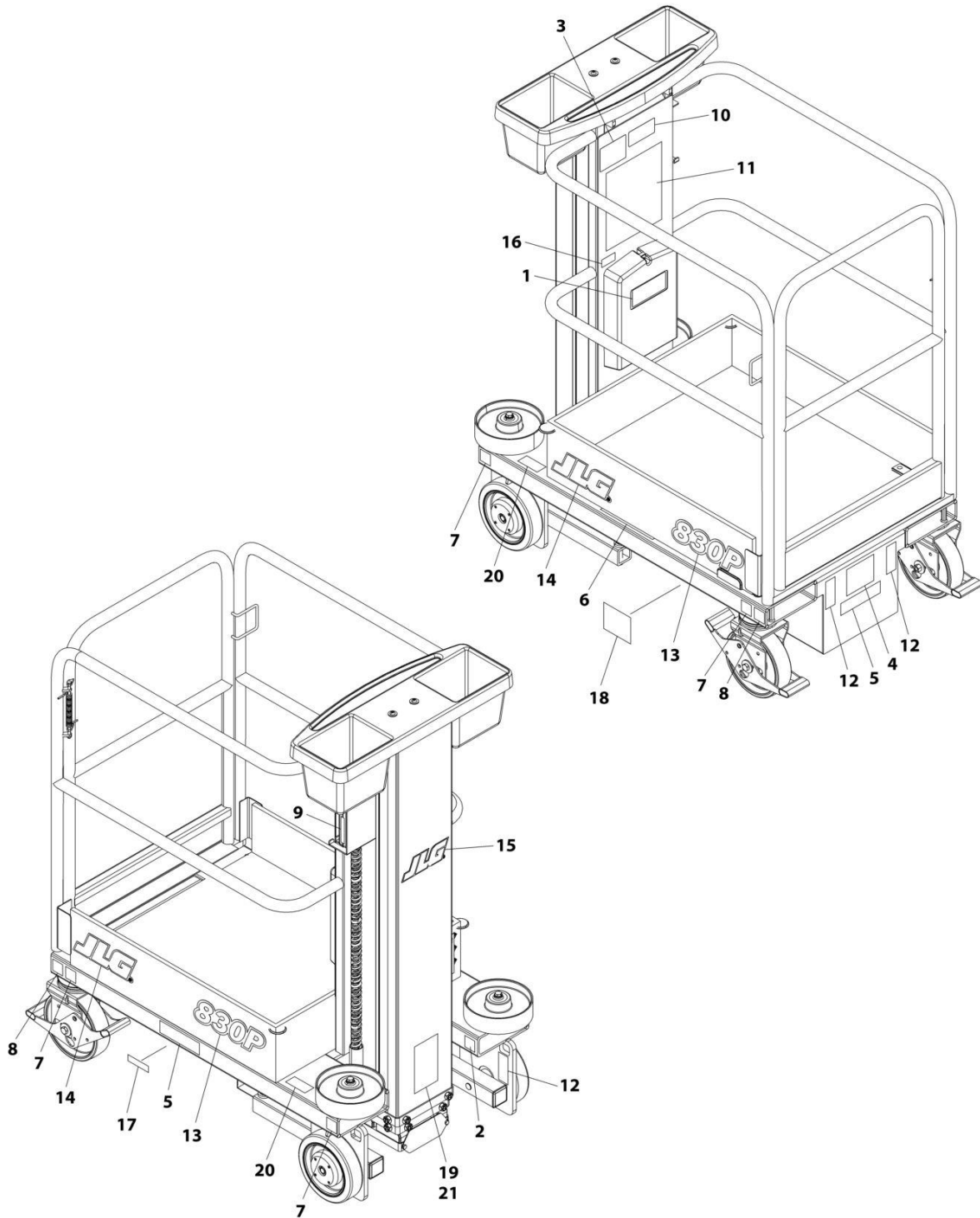
## SECTION 1 - 830P SN P900000001 - P900004870

### FIGURE 1-9. DECAL INSTALLATION (BRAZIL SPECS)

ITEM	PART NUMBER	QTY	DESCRIPTION	REV
	1001241789	Ref	DECAL INSTALLATION (PORTUGUESE/SPANISH)	A
1	1701509	1	Decal - Manual	
2	1703817	2	Decal - Fork Lift	
3	1704021	1	Decal - Electrocuting	
4	1001241805	1	Decal - Hand Crushing	
5	1001241806	2	Decal - Explosion	
6	1704024	2	Decal - Crushing	
7	1001213587	4	Decal - Wheel Load	
8	1001213208	2	Decal - Caster Lock	
9	1001213490	1	Decal - Operator Controller	
10	1001213488	1	Decal - Capacity	
11	1001241807	1	Decal - Warning	
12	1001213442	4	Decal - Tie Down/Lift	
13	1001213551	2	Decal - Logo	
14	1001214107	2	Decal - JLG	
15	1001214109	1	Decal - JLG	
16	1001241802	1	Decal - Lanyard	
17	3251243	1	Decal - Decal 120V-60Hz	
18	1001241808	1	Decal - Emergency Lowering	
19	See Note	NSS	Nameplate - Manufacturers Serial Number (Note: Not Available for Purchase)	
20	1704026	1	Decal - Level Indicator	
21	3820001	4	Rivet	

# SECTION 1 - 830P SN P900000001 - P900004870

## FIGURE 1-10. DECAL INSTALLATION (LATIN AMERICAN SPECS)



ART\_1001241788

## SECTION 1 - 830P SN P900000001 - P900004870

### FIGURE 1-10. DECAL INSTALLATION (LATIN AMERICAN SPECS)

ITEM	PART NUMBER	QTY	DESCRIPTION	REV
	1001241788	Ref	DECAL INSTALLATION (SPANISH/ENGLISH)	A
1	1701509	1	Decal - Manual	
2	1703817	2	Decal - Fork Lift	
3	1704029	1	Decal - Electrocution	
4	1001241795	1	Decal - Hand Crushing	
5	1001241797	2	Decal - Explosion	
6	1704032	2	Decal - Crushing	
7	1001213587	4	Decal - Wheel Load	
8	1001213208	2	Decal - Caster Lock	
9	1001213490	1	Decal - Operator Controller	
10	1001213488	1	Decal - Capacity	
11	1001241798	1	Decal - Warning	
12	1001213442	4	Decal - Tie Down/Lift	
13	1001213551	2	Decal - Logo	
14	1001214107	2	Decal - JLG	
15	1001214109	1	Decal - JLG	
16	1001241792	1	Decal - Lanyard	
17	3251243	1	Decal - Decal 120V-60Hz	
18	1001241799	1	Decal - Emergency Lowering	
19	See Note	NSS	Nameplate - Manufacturers Serial Number (Note: Not Available for Purchase)	
20	1704034	1	Decal - Level Indicator	
21	3820001	4	Rivet	

# SECTION 1 - 830P SN P900000001 - P900004870

## FIGURE 1-11. RECOMMENDED SERVICE PARTS STOCK

ITEM	PART NUMBER	QTY	DESCRIPTION	REV
		Ref	Note: The following list will service one machine (built to current production per date on the front cover) with emergency repair parts which can be installed in the field. Parts from the list should be replaced when inventory is depleted to keep service parts stock supplied. For further information, contact your JLG dealer or the JLG Industries Parts Department.	
	1001265939	2	Fuse, 10Amp (Chassis Electrical)	
	PTM112	1	Key, Replacement (Ground Controls)	
	PPE612	1	Solenoid (Chassis Electrical)	
	1001265940	1	Switch, Emergency Stop (Chassis Electrical)	
	PTE003	1	Switch, Emergency Stop (Ground and Platform Controls)	
	PTE005	1	Switch, Key (Ground Controls)	
	PTE006	1	Switch, Push Button (Ground and Platform Controls)	
	PTE007	1	Switch, Push Button (Ground and Platform Controls)	
	1001266744	1	Switch, Push Button (Platform Controls)	



# SECTION 1 - 830P SN P900000001 - P900004870

## FIGURE 1-12. SPECIAL OPTIONS/ACCESSORIES/KITS

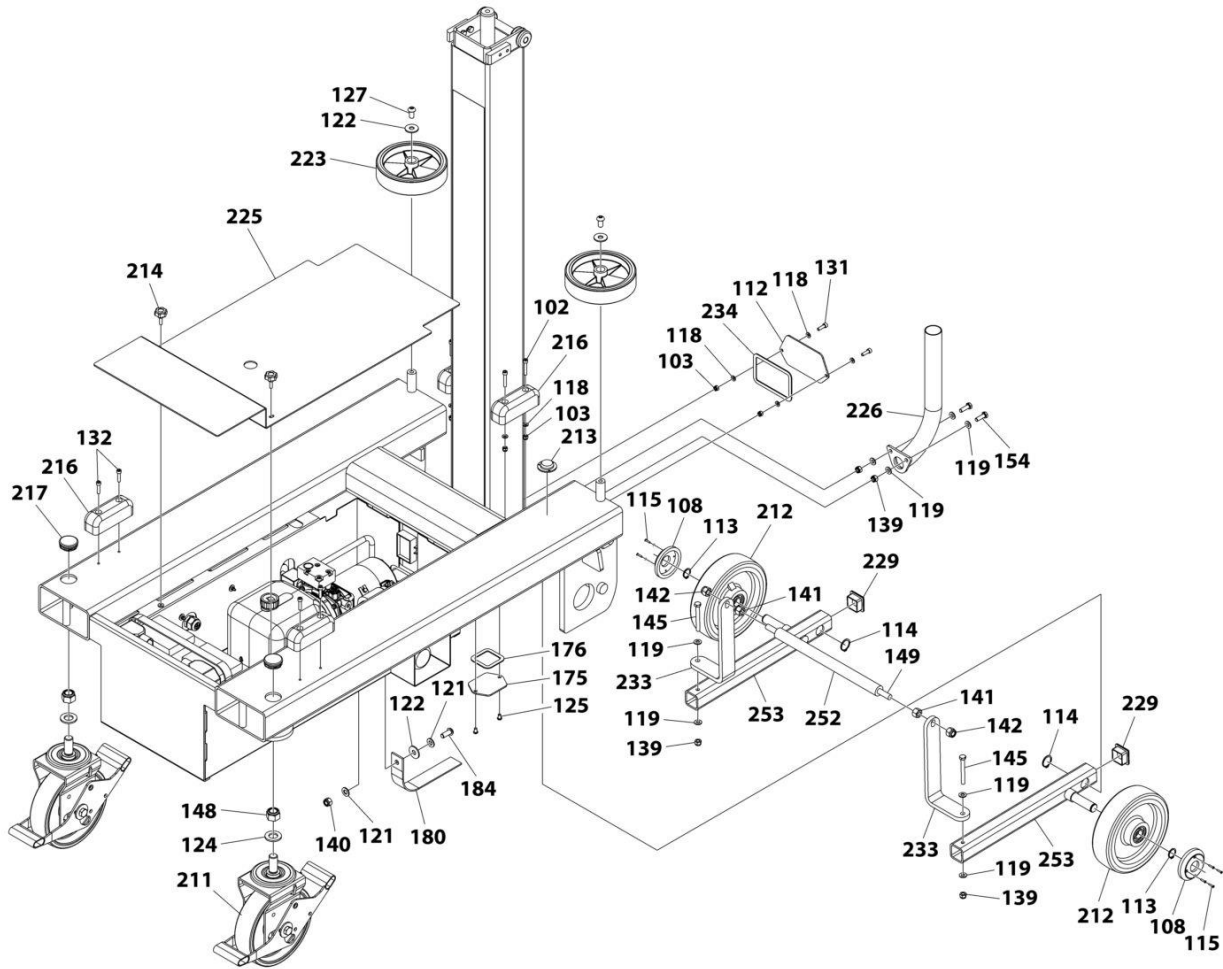
ITEM	PART NUMBER	QTY	DESCRIPTION	REV
		Ref	Note: This list is to accommodate machines ordered with special equipment. Options may not be applicable to all models. For more specific parts information contact JLG Parts Department	
		Ref	MISCELLANEOUS SPECIAL OPTIONS/ACCESSORIES/KITS	
	1001256697	Ref	Service Kits & Tools	F
	1001249640	Ref	Static Strap Kit <b>(Prior to SN P900013864)</b>	
	1001302745	Ref	Static Strap Kit <b>(SN P900013864 to Present)</b>	



**SECTION 2 - 830P SN P900005119 - P900013863**

# SECTION 2 - 830P SN P90005119 - P90013863

## FIGURE 2-1. FRAME INSTALLATION



ART\_830P\_FRAME\_2

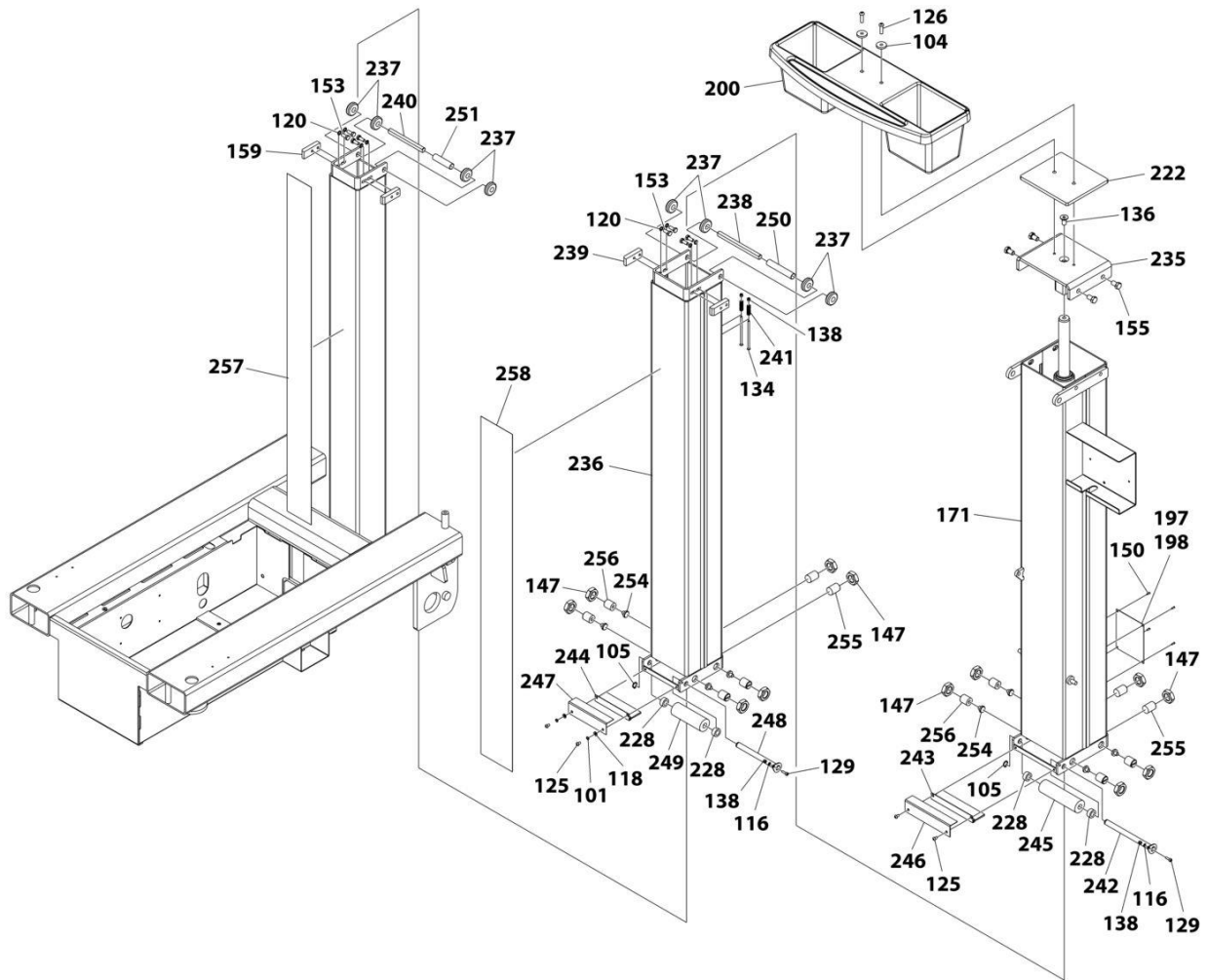
## SECTION 2 - 830P SN P900005119 - P900013863

### FIGURE 2-1. FRAME INSTALLATION

ITEM	PART NUMBER	QTY	DESCRIPTION	REV
102	1001264556	4	Bolt M6 x 35	
103	1001264557	6	Nut M6	
108	1001265093	2	Guard, Hub	
112	1001265100	1	Cover, Spine End	
113	1001265107	2	Circlip	
114	1001265108	2	Circlip	
115	1001265109	8	Bolt 4 x 5/8	
118	1001265112	8	Washer M6	
119	1001265113	10	Washer M8	
121	1001265115	2	Washer M10	
122	1001265116	3	Washer M10	
124	1001265118	2	Washer 3/4	
125	1001265119	2	Bolt M6 x 10	
127	1001265122	2	Bolt M10 x 20	
131	1001265127	2	Bolt M6 x 20	
132	1001265128	4	Bolt M6 x 25	
139	1001265135	4	Nut M8	
140	1001265136	1	Nut M10	
141	1001265137	2	Nut M12	
142	1001265138	2	Nut M12	
145	1001265141	2	Bolt M8 x 70	
148	1001265147	2	Nut 3/4	
149	1001265148	1	Bar, Threaded M12	
154	1001265203	2	Bolt M8 x 25	
175	1001265946	1	Cover, Spine Bottom	
176	1001265947	1	Gasket, Spine Bottom Cover	
180	1001265952	1	Cable, Earthing	
184	1001265959	1	Bolt M10 x 25	
211	PTM1022	2	Castor - Swivel	
212	PTM103	2	Castor - Fixed	
213	PTM106	1	Level	
214	PTM107	2	Knob	
216	PTM126	4	Pad, Rest	
217	PTM163	2	Insert, Chassis	
223	PTNM302	2	Wheel, Buffer	
225	PTNM320	1	Lid, Chassis	
226	PTNM321	1	Tube, Guide	
229	PTNM332	2	Cap, End	
233	PTNM344	2	Bracket, Autobrake	
234	PTNM345	1	Gasket, Spine End Cover	
252	PTNM380	1	Roller, Brake	
253	PTNM385	2	Arm, Axle	

SECTION 2 - 830P SN P90005119 - P90013863

FIGURE 2-2. ARM INSTALLATION



ART\_830P\_ARM\_2

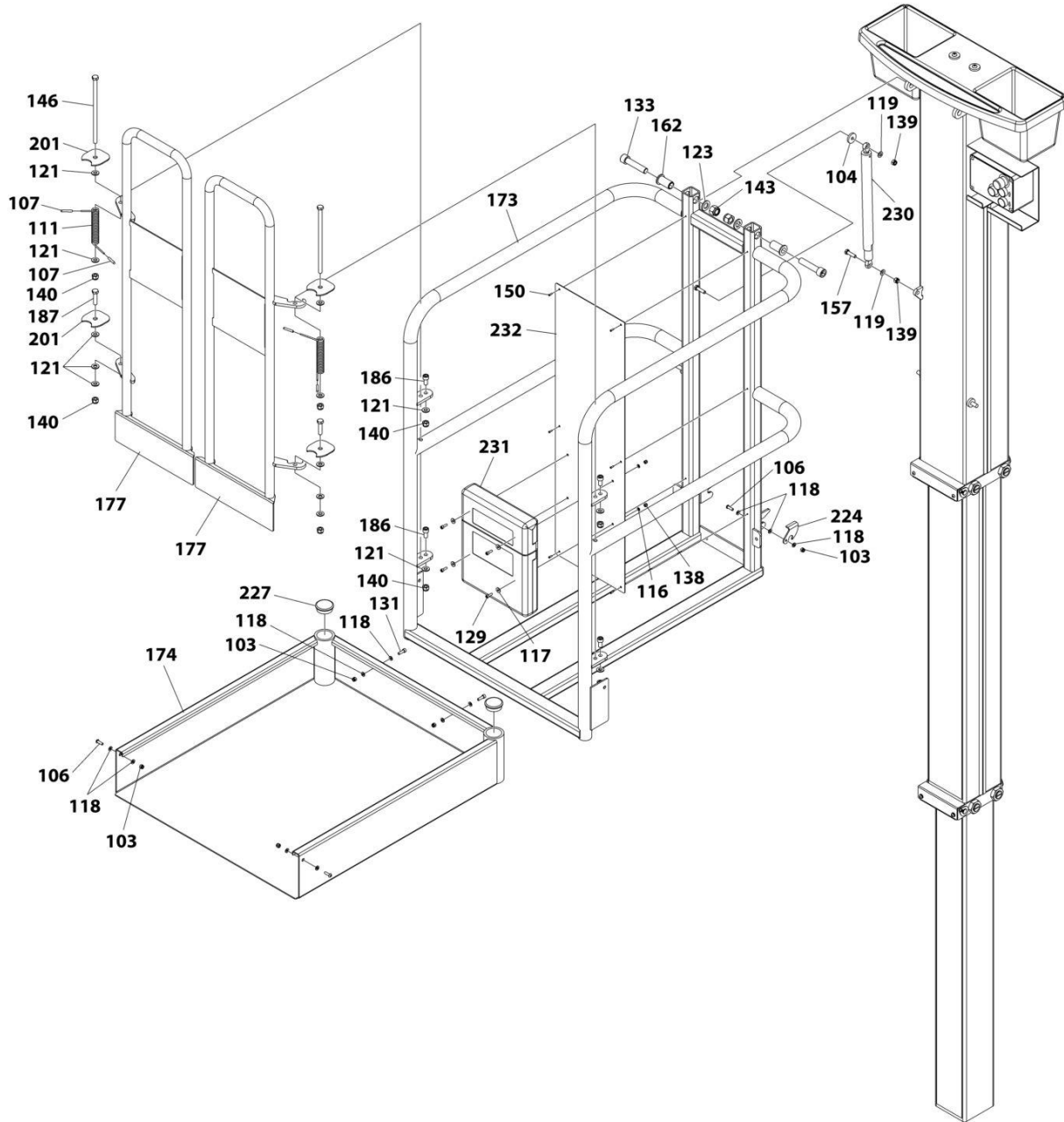
## SECTION 2 - 830P SN P900005119 - P900013863

### FIGURE 2-2. ARM INSTALLATION

ITEM	PART NUMBER	QTY	DESCRIPTION	REV
101	1001264555	2	Washer M6	
104	1001264558	2	Washer M8	
105	1001264559	2	Circlip	
116	1001265110	2	Washer M5	
118	1001265112	2	Washer M6	
120	1001265114	8	Washer M8	
125	1001265119	4	Bolt M6 x 10	
126	1001265121	2	Bolt M8 x 30	
129	1001265125	2	Bolt M5 x 16	
134	1001265130	2	Bolt M5 x 100	
136	1001265132	1	Bolt M12 x 25	
138	1001265134	4	Nut M5	
147	1001265146	12	Nut M24	
150	1001265149	4	Rivet	
153	1001265202	8	Bolt M8 x 20	
155	1001265205	4	Bolt M12 x 20	
159	1001265366	2	Pad, Wear	
171	1001265942	1	Mast, Outer	
197	See Note	NSS	Specification Plate	
198	See Note	NSS	Specification Plate	
200	PELM405	1	Tray, Tool	
222	PTNM300	1	Spacer, Mast Cap	
228	PTNM330	4	Spacer	
235	PTNM348	1	Cap, Mast	
236	PTNM349	1	Mast, Middle	
237	PTNM356	8	Roller, Mast	
238	PTNM3572	1	Axle	
239	PTNM358	2	Pad, Wear	
240	PTNM359	1	Axle	
241	PTNM360	2	Spring	
242	PTNM361	1	Axle	
243	PTNM363A	1	Brush	
244	PTNM363B	1	Brush	
245	PTNM364	1	Roller, Outer Mast	
246	PTNM365A	1	Cover, Roller	
247	PTNM365B	1	Cover, Roller	
248	PTNM366	1	Axle	
249	PTNM367	1	Roller, Mid Mast	
250	PTNM370	1	Spacer	
251	PTNM371	1	Spacer	
254	PTNM389	8	Insert, Wear Screw	
255	PTNM390	4	Screw, Plastic Wear	
256	PTNM390SS	8	Screw, Stainless Steel Wear	
257	PTNM393	1	Strip, Wear	
258	PTNM394	1	Strip, Wear	

SECTION 2 - 830P SN P90005119 - P90013863

FIGURE 2-3. PLATFORM INSTALLATION



ART\_830P\_PLATFORM\_2

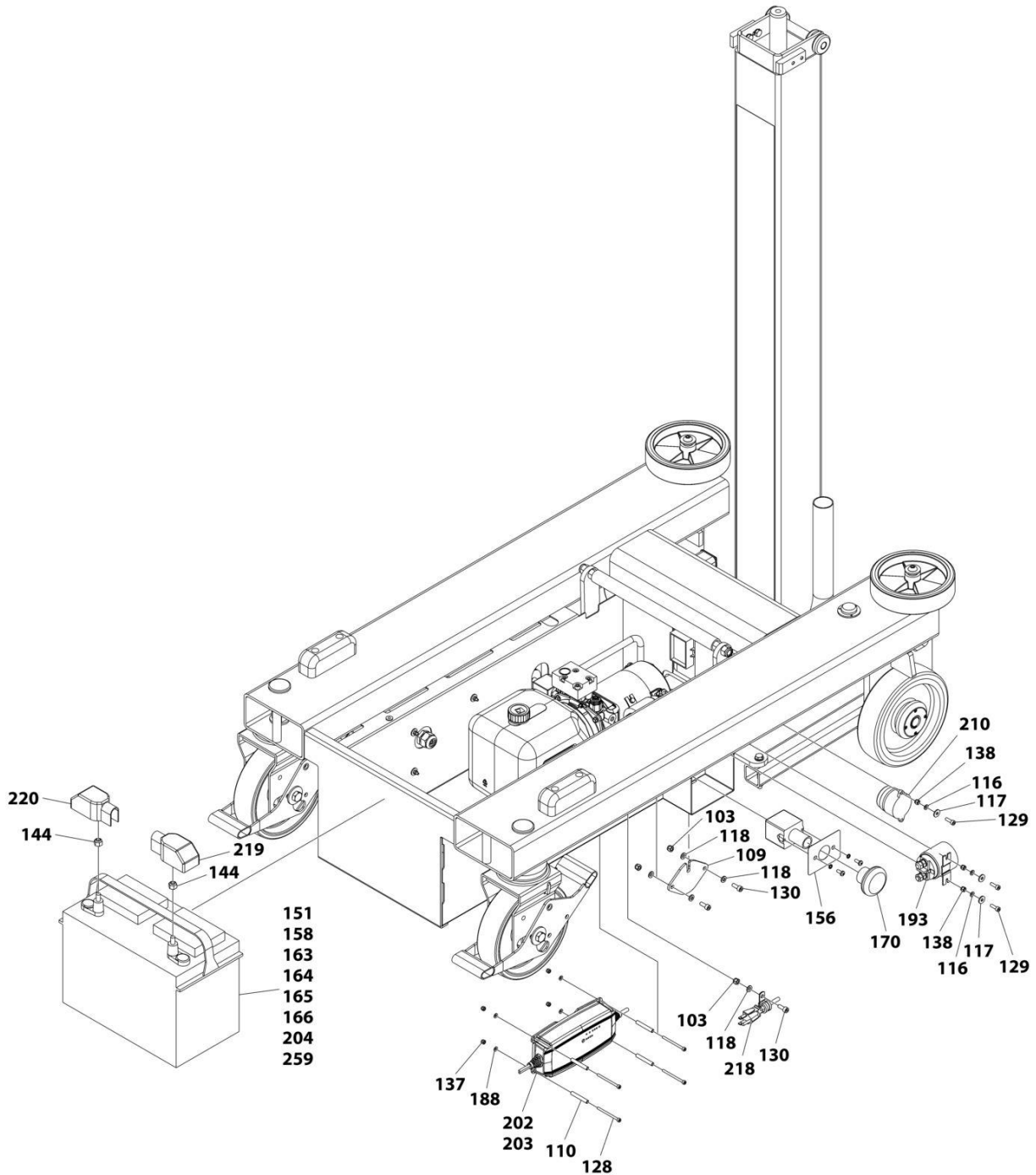
## SECTION 2 - 830P SN P900005119 - P900013863

### FIGURE 2-3. PLATFORM INSTALLATION

ITEM	PART NUMBER	QTY	DESCRIPTION	REV
103	1001264557	5	Nut M6	
104	1001264558	1	Washer M8	
106	1001264707	3	Bolt M6 x 20	
107	1001265092	4	Cap, Spring	
111	1001265099	2	Spring, Gate	
116	1001265110	2	Washer M5	
117	1001265111	4	Washer M5	
118	1001265112	11	Washer M6	
119	1001265113	2	Washer M8	
121	1001265115	14	Washer M10	
123	1001265117	2	Washer M16	
129	1001265125	4	Bolt M5 x 16	
131	1001265127	2	Bolt M6 x 20	
133	1001265129	2	Bolt M16 x 75	
138	1001265134	2	Nut M5	
139	1001265135	2	Nut M8	
140	1001265136	8	Nut M10	
143	1001265139	2	Nut M16	
146	1001265144	2	Bolt M10 x 220	
150	1001265149	6	Rivet	
157	1001265233	1	Bolt M8 x 30	
162	1001265748	2	Pivot, Platform	
173	1001265944	1	Platform	
174	1001265945	1	Tray, Platform	
177	1001265948	2	Gate, Platform	
186	1001265961	4	Bolt M10 x 20	
187	1001265962	2	Bolt M10 x 40	
201	PELM430	4	Cover, Hinge	
224	PTNM307	1	Latch, Platform	
227	PTNM323	2	Cap, End	
230	PTNM340	1	Strut	
231	PTNM342	1	Document Holder	
232	PTNM343	1	Plate, Platform Label	

# SECTION 2 - 830P SN P90005119 - P90013863

## FIGURE 2-4. ELECTRICAL INSTALLATION



ART\_830P\_ELECTRICAL\_2



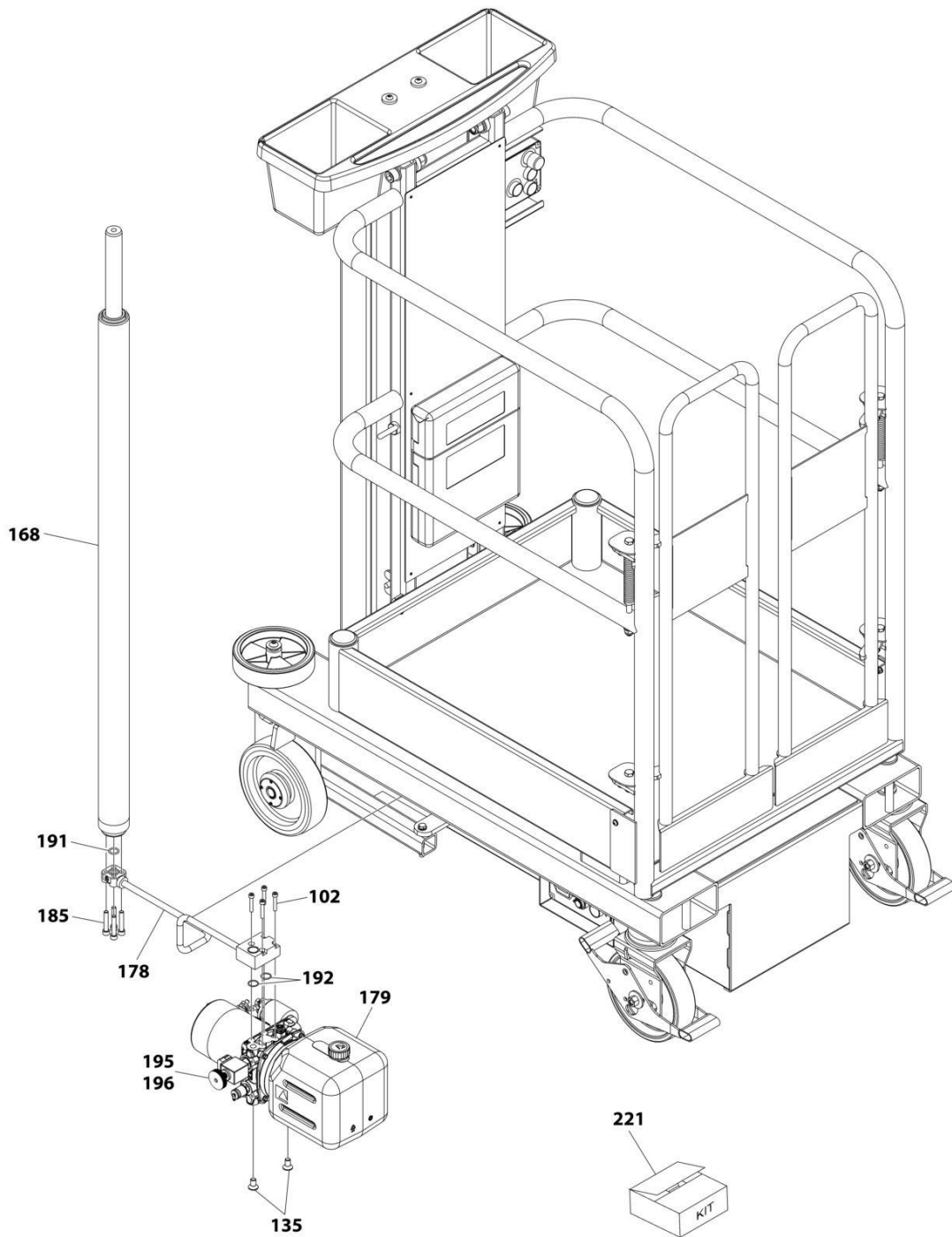
## SECTION 2 - 830P SN P900005119 - P900013863

### FIGURE 2-4. ELECTRICAL INSTALLATION

ITEM	PART NUMBER	QTY	DESCRIPTION	REV
103	1001264557	3	Nut M6	
109	1001265094	1	Cover, Charger Lead Hole	
110	1001265097	4	Tube, Charger Support	
116	1001265110	4	Washer M5	
117	1001265111	4	Washer M5	
118	1001265112	5	Washer M6	
128	1001265123	4	Bolt M4 x 55	
129	1001265125	4	Bolt M5 x 16	
130	1001265126	3	Bolt M6 x 16	
137	1001265133	4	Nut M4	
138	1001265134	4	Nut M5	
144	1001265140	2	Nut 5/16	
151	1001265150	1	Ring Connector	
156	1001265232	1	Decal, Emergency Stop	
158	1001265235	1	Tie Strap	
163	1001265909	1	Cable	
164	1001265910	1	Cable	
165	1001265911	1	Cable	
166	1001265912	1	Cable	
170	1001265940	1	Switch, Emergency Stop	
188	1001265963	4	Washer M4	
193	PPE612	1	Solenoid	
202	PTE0012	1	Charger, Battery - 110V	
203	PTE001E	1	Charger, Battery - 230V	
204	PTE002	1	Battery - Standard	
210	PTE215	1	Siren, Power Pack	
218	PTM172	1	Clip	
219	PTNE213	1	Cover, Battery Terminal - Blue/Black	
220	PTNE214	1	Cover, Battery Terminal - Red	
259	1001269772	1	Battery - AGM	

**SECTION 2 - 830P SN P90005119 - P90013863**

**FIGURE 2-5. HYDRAULICS INSTALLATION**



ART\_830P\_HYDRAULICS\_2

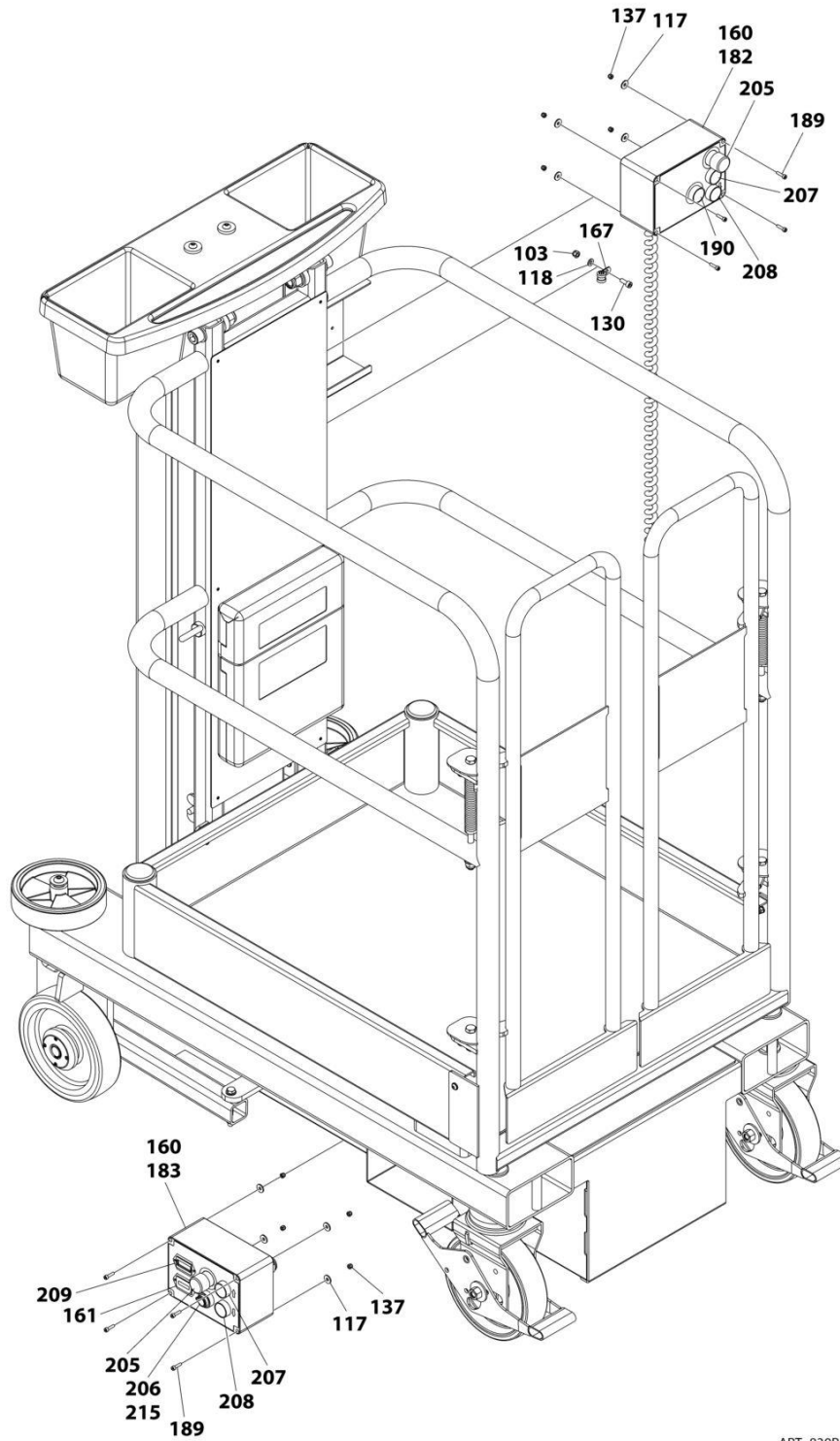
## SECTION 2 - 830P SN P900005119 - P900013863

### FIGURE 2-5. HYDRAULICS INSTALLATION

ITEM	PART NUMBER	QTY	DESCRIPTION	REV
102	1001264556	4	Bolt M6 x 35	
135	1001265131	2	Bolt M10 x 20	
168	1001265915	1	Cylinder	
178	1001265949	1	Pipe, Hydraulic	
179	1001265950	1	Power Pack	
185	1001265960	4	Bolt M8 x 45	
191	1001266745	1	O-Ring	
192	1001266747	2	O-Ring	
195	1001266750	1	Valve, Powerpack Solenoid	
196	1001266751	1	Valve, Emergency Lowering Cartridge	
221	PTNH277	1	Kit, Seal	

SECTION 2 - 830P SN P90005119 - P90013863

FIGURE 2-6. GROUND CONTROLS INSTALLATION



ART\_830P\_GROUND CONTROLS\_2

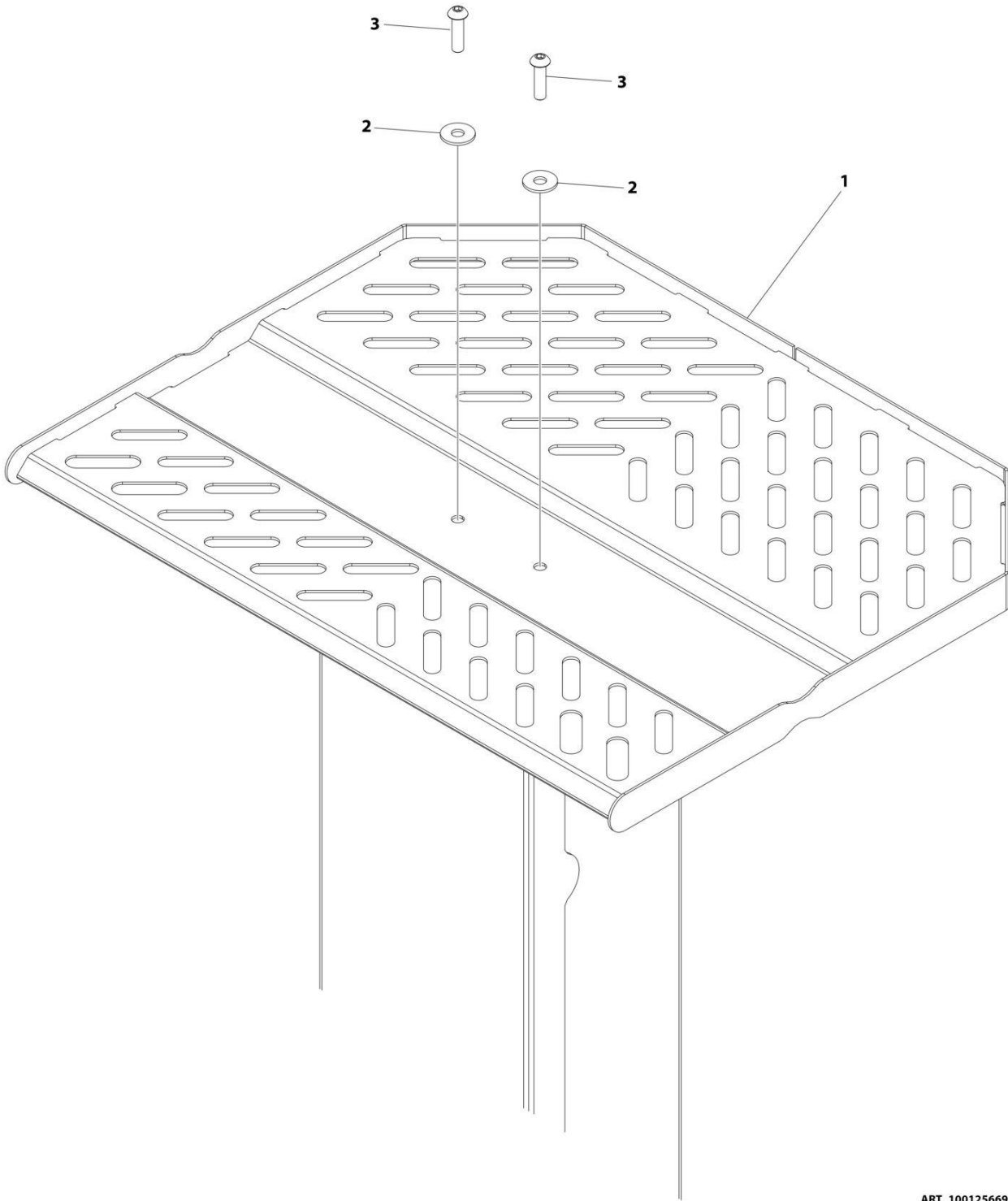
## SECTION 2 - 830P SN P900005119 - P900013863

### FIGURE 2-6. GROUND CONTROLS INSTALLATION

ITEM	PART NUMBER	QTY	DESCRIPTION	REV
103	1001264557	1	Nut M6	
117	1001265111	8	Washer M5	
118	1001265112	1	Washer M6	
130	1001265126	1	Bolt M6 x 16	
137	1001265133	8	Nut M4	
160	1001265644	2	Box, Ground/Platform Control	
161	1001265646	1	Meter, Hour	
167	1001265913	1	Clip	
182	1001265957	1	Controls, Platform	
183	1001265958	1	Controls, Ground	
189	1001265988	8	Bolt M4 x 16	
190	1001266744	1	Switch, Push Button	
205	PTE003	2	Switch, Emergency Stop	
206	PTE005	1	Switch, Key	
207	PTE006	2	Switch, Push Button	
208	PTE007	2	Switch, Push Button	
209	PTE021	1	Meter, Battery Condition	
215	PTM112	1	Key, Replacement	

**SECTION 2 - 830P SN P90005119 - P90013863**

**FIGURE 2-7. STOCK PICKER TRAY INSTALLATION**



ART\_1001256698

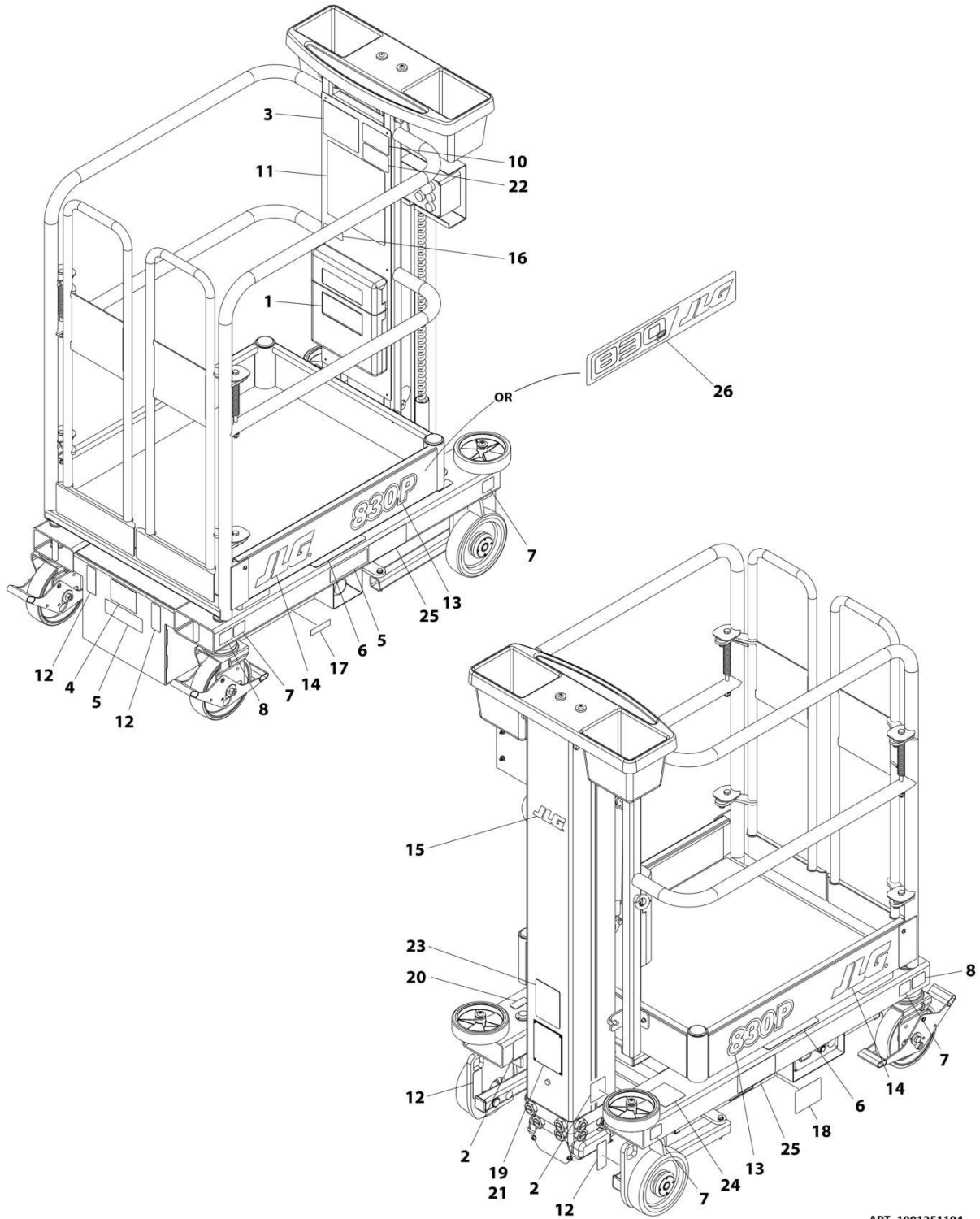
## SECTION 2 - 830P SN P900005119 - P900013863

### FIGURE 2-7. STOCK PICKER TRAY INSTALLATION

ITEM	PART NUMBER	QTY	DESCRIPTION	REV
	1001256698	Ref	TOOL TRAY INSTALLATION	B
1	1001249314	1	Tool Tray	
2	1001264558	2	Washer M8	
3	1001265121	2	Bolt M8 x 30	

SECTION 2 - 830P SN P90005119 - P90013863

FIGURE 2-8. DECALS INSTALLATION (ANSI SPECS)



ART\_1001251194



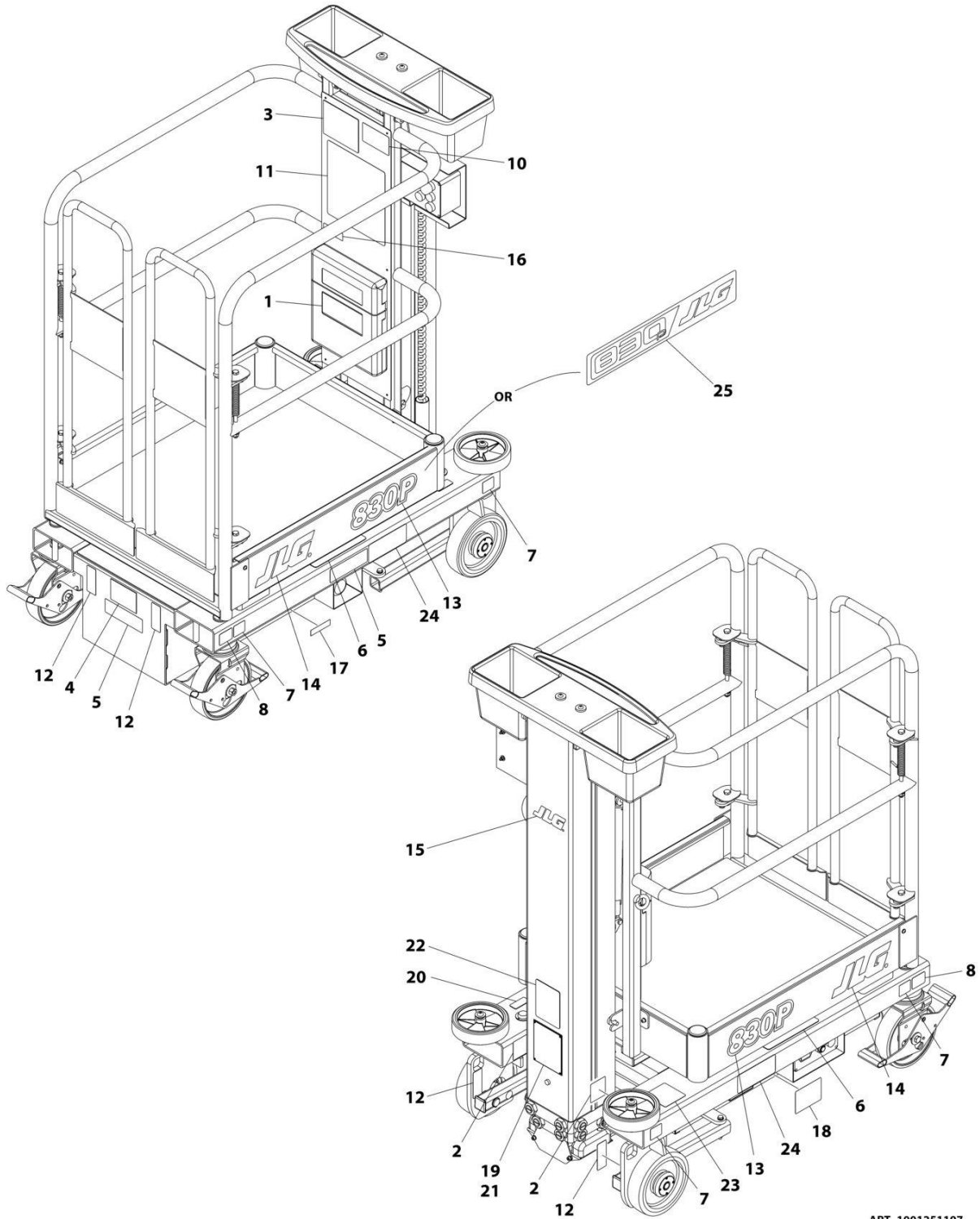
## SECTION 2 - 830P SN P900005119 - P900013863

### FIGURE 2-8. DECALS INSTALLATION (ANSI SPECS)

ITEM	PART NUMBER	QTY	DESCRIPTION	REV
	1001251194	Ref	DECAL 830P INSTALLATION	C
1	1701509	1	Decal - Manual	
2	1703817	2	Decal - Fork Lift	
3	1703781	1	Decal - Electrical Hazard	
4	1702391	1	Decal - Hand Crushing	
5	1703813	2	Decal - Warning Battery Ventilation	
6	1703786	2	Decal - Crushing Hazard	
7	1001213587	4	Decal - Wheel Load	
8	1001213208	2	Decal - Caster Lock Direction	
10	1001213488	1	Decal - Capacity	
11	1001251170	1	Decal - Warning	
12	1001213442	4	Decal - Lifting and Tie Down	
13	1001213551	2	Decal - Model 830P <b>(SN P900004871 through P900006401, Excluding P900005535)</b>	
14	1001214107	2	Decal - JLG <b>(SN P900004871 through P900006401, Excluding P900005535)</b>	
15	1001214109	1	Decal - JLG	
16	1001213582	1	Decal - Fall Restraint	
17	3251243	1	Nameplate	
18	1001260980	1	Decal - Emergency Lowering	
19	See Note	NSS	Nameplate - Manufacturers Serial Number (Note: Not Available for Purchase)	
20	1703789	1	Decal - Level Indicator	
21	3820001	4	Revet	
22	1001231801	1	Decal - Prop 65 Warning	
23	1001131270	1	Decal - Patent	
24	1001223055	1	Decal - Yearly Inspection	
25	1706832	2	Decal - Danger Electrocution	
26	1001265941	2	Decal - Model 830P by JLG <b>(SN P900006592 to Present, Including P900005535)</b>	

SECTION 2 - 830P SN P90005119 - P90013863

FIGURE 2-9. DECALS INSTALLATION (BRAZIL SPECS)



ART\_1001251197

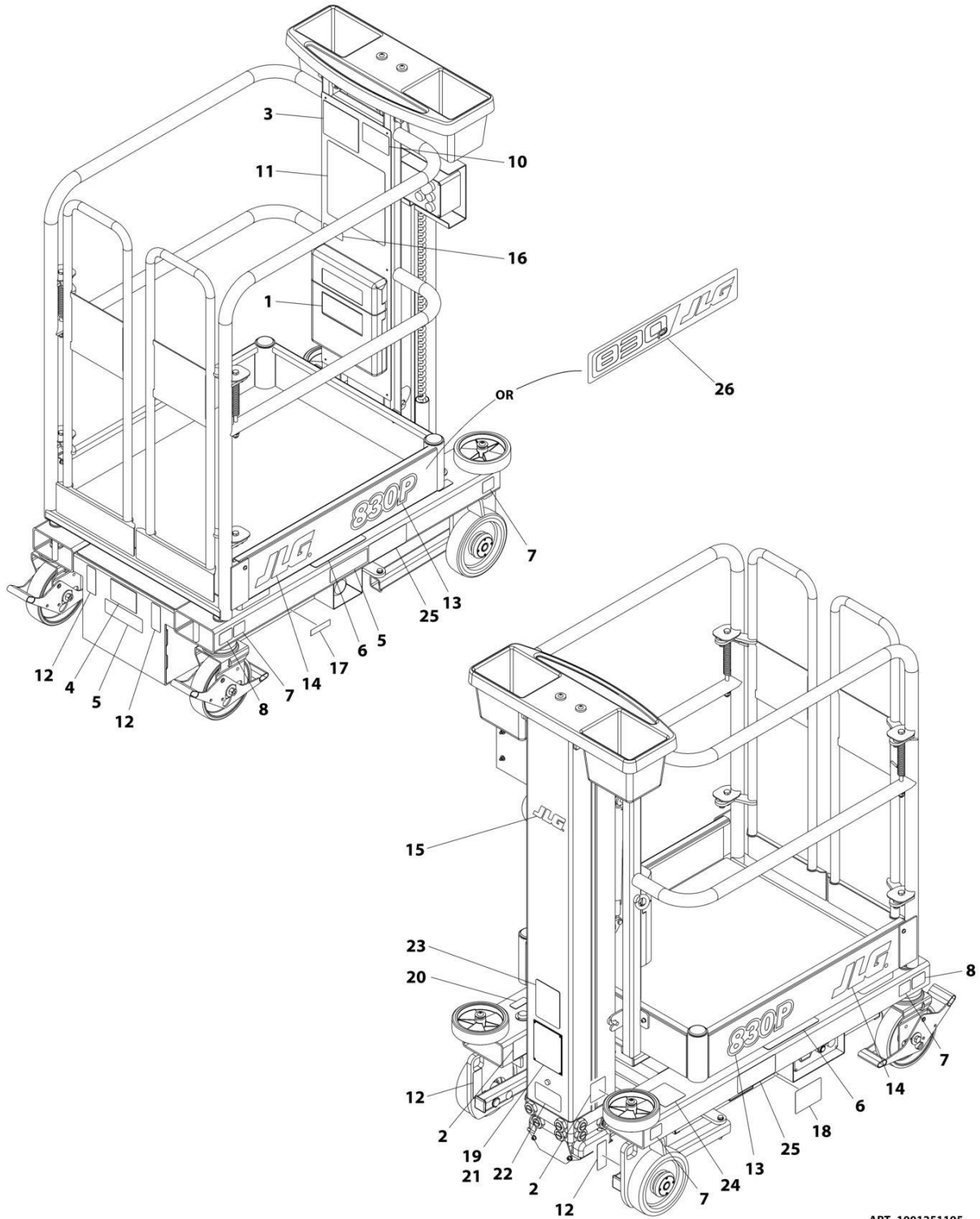
## SECTION 2 - 830P SN P900005119 - P900013863

### FIGURE 2-9. DECALS INSTALLATION (BRAZIL SPECS)

ITEM	PART NUMBER	QTY	DESCRIPTION	REV
	1001251197	Ref	DECAL INSTALLATION - 830P	C
1	1701509	1	Decal - Manual	
2	1703817	2	Decal - Fork Lift	
3	1704021	1	Decal - Electrical Hazard	
4	1001241805	1	Decal - Hand Crushing	
5	1001241806	2	Decal - Explosion	
6	1704024	2	Decal - Crushing Hazard	
7	1001213587	4	Decal - Wheel Load	
8	1001213208	2	Decal - Caster Lock Direction	
10	1001213488	1	Decal - Capacity	
11	1001251173	1	Decal - Warning	
12	1001213442	4	Decal - Lifting and Tie Down	
13	1001213551	2	Decal - Model 830P <b>(SN P900004871 through P900006401, Excluding P900005535)</b>	
14	1001214107	2	Decal - JLG <b>(SN P900004871 through P900006401, Excluding P900005535)</b>	
15	1001214109	1	Decal - JLG	
16	1001241802	1	Decal - Lanyard Attachment	
17	3251243	1	Nameplate	
18	1001260983	1	Decal - Emergency Lowering	
19	See Note	NSS	Nameplate - Manufacturers Serial Number (Note: Not Available for Purchase)	
20	1704026	1	Decal - Level Indicator	
21	3820001	4	Revet	
22	1001131270	1	Decal - Patent	
23	1001245185	1	Decal - Yearly Inspection	
24	1706833	2	Decal - Danger Electrocution	
25	1001265941	2	Decal - Model 830P by JLG <b>(SN P900006592 to Present, Including P900005535)</b>	

SECTION 2 - 830P SN P90005119 - P90013863

FIGURE 2-10. DECALS INSTALLATION (CSA SPECS)



ART\_1001251195

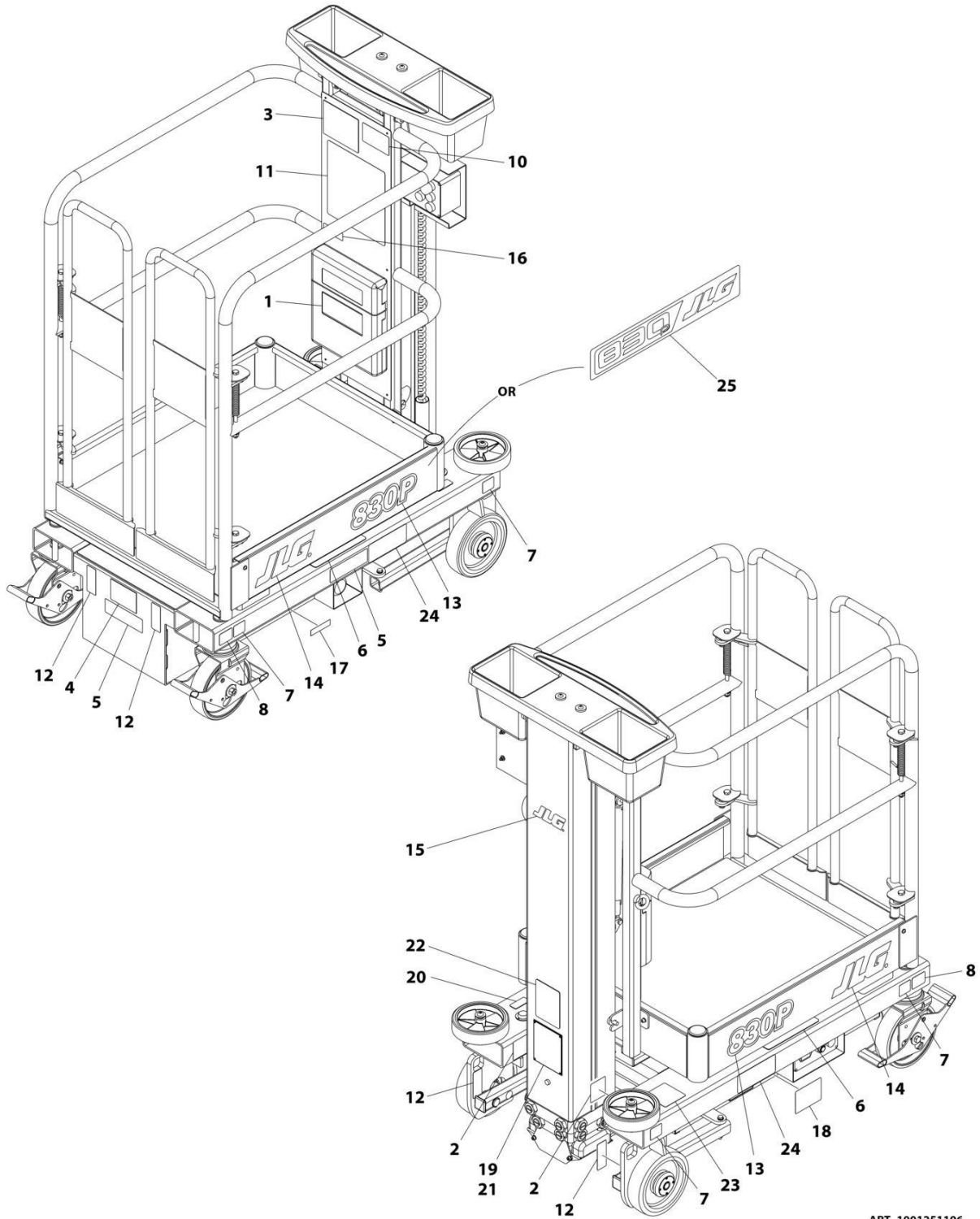
## SECTION 2 - 830P SN P900005119 - P900013863

### FIGURE 2-10. DECALS INSTALLATION (CSA SPECS)

ITEM	PART NUMBER	QTY	DESCRIPTION	REV
	1001251195	Ref	DECAL INSTALLATION - 830P	C
1	1701509	1	Decal - Manual	
2	1703817	2	Decal - Fork Lift	
3	1704795	1	Decal - Electrical Hazard	
4	1001215113	1	Decal - Warning Hand Crushing	
5	1001215217	2	Decal - Warning Explosion Fire	
6	1704039	2	Decal - Crushing Hazard	
7	1001213587	4	Decal - Wheel Load	
8	1001213208	2	Decal - Caster Lock Direction	
10	1001213488	1	Decal - Capacity	
11	1001251171	1	Decal - Warning	
12	1001213442	4	Decal - Lifting and Tie Down	
13	1001213551	2	Decal - Model 830P <b>(SN P900004871 through P900006401, Excluding P900005535)</b>	
14	1001214107	2	Decal - JLG <b>(SN P900004871 through P900006401, Excluding P900005535)</b>	
15	1001214109	1	Decal - JLG	
16	1001215009	1	Decal - Fall Restraint	
17	3251243	1	Nameplate	
18	1001260981	1	Decal - Emergency Lowering	
19	See Note	NSS	Nameplate - Manufacturers Serial Number (Note: Not Available for Purchase)	
20	1704041	1	Decal - Level Indicator	
21	3820001	4	Revet	
22	1706351	1	Decal - CSA	
23	1001131270	1	Decal - Patent	
24	1001245181	1	Decal - Yearly Inspection	
25	1001256551	2	Decal - Danger Electrocution	
26	1001265941	2	Decal - Model 830P by JLG <b>(SN P900006592 to Present, Including P900005535)</b>	

SECTION 2 - 830P SN P90005119 - P90013863

FIGURE 2-11. DECALS INSTALLATION (LATIN AMERICAN SPECS)



ART\_1001251196

## SECTION 2 - 830P SN P900005119 - P900013863

### FIGURE 2-11. DECALS INSTALLATION (LATIN AMERICAN SPECS)

ITEM	PART NUMBER	QTY	DESCRIPTION	REV
	1001251196	Ref	DECAL INSTALLATION - 830P	C
1	1701509	1	Decal - Manual	
2	1703817	2	Decal - Fork Lift	
3	1704029	1	Decal - Electrical Hazard	
4	1001241795	1	Decal - Hand Crushing	
5	1001241797	2	Decal - Explosion	
6	1704032	2	Decal - Crushing Hazard	
7	1001213587	4	Decal - Wheel Load	
8	1001213208	2	Decal - Caster Lock Direction	
10	1001213488	1	Decal - Capacity	
11	1001251172	1	Decal - Warning	
12	1001213442	4	Decal - Lifting and Tie Down	
13	1001213551	2	Decal - Model 830P <b>(SN P900004871 through P900006401, Excluding P900005535)</b>	
14	1001214107	2	Decal - JLG <b>(SN P900004871 through P900006401, Excluding P900005535)</b>	
15	1001214109	1	Decal - JLG	
16	1001241792	1	Decal - Lanyard Attachment	
17	3251243	1	Nameplate	
18	1001260982	1	Decal - Emergency Lowering	
19	See Note	NSS	Nameplate - Manufacturers Serial Number (Note: Not Available for Purchase)	
20	1704034	1	Decal - Level Indicator	
21	3820001	4	Revet	
22	1001131270	1	Decal - Patent	
23	1001245183	1	Decal - Yearly Inspection	
24	1001256552	2	Decal - Danger Electrical	
25	1001265941	2	Decal - Model 830P by JLG <b>(SN P900006592 to Present, Including P900005535)</b>	

## SECTION 2 - 830P SN P900005119 - P900013863

FIGURE 2-12. RECOMMENDED SERVICE PARTS STOCK

ITEM	PART NUMBER	QTY	DESCRIPTION	REV
		Ref	Note: The following list will service one machine (built to current production per date on the front cover) with emergency repair parts which can be installed in the field. Parts from the list should be replaced when inventory is depleted to keep service parts stock supplied. For further information, contact your JLG dealer or the JLG Industries Parts Department.	
	1001265939	2	Fuse, 10Amp (Chassis Electrical)	
	PTM112	1	Key, Replacement (Ground Controls)	
	PPE612	1	Solenoid (Chassis Electrical)	
	1001265940	1	Switch, Emergency Stop (Chassis Electrical)	
	PTE003	1	Switch, Emergency Stop (Ground and Platform Controls)	
	PTE005	1	Switch, Key (Ground Controls)	
	PTE006	1	Switch, Push Button (Ground and Platform Controls)	
	PTE007	1	Switch, Push Button (Ground and Platform Controls)	
	1001266744	1	Switch, Push Button (Platform Controls)	





## SECTION 2 - 830P SN P900005119 - P900013863

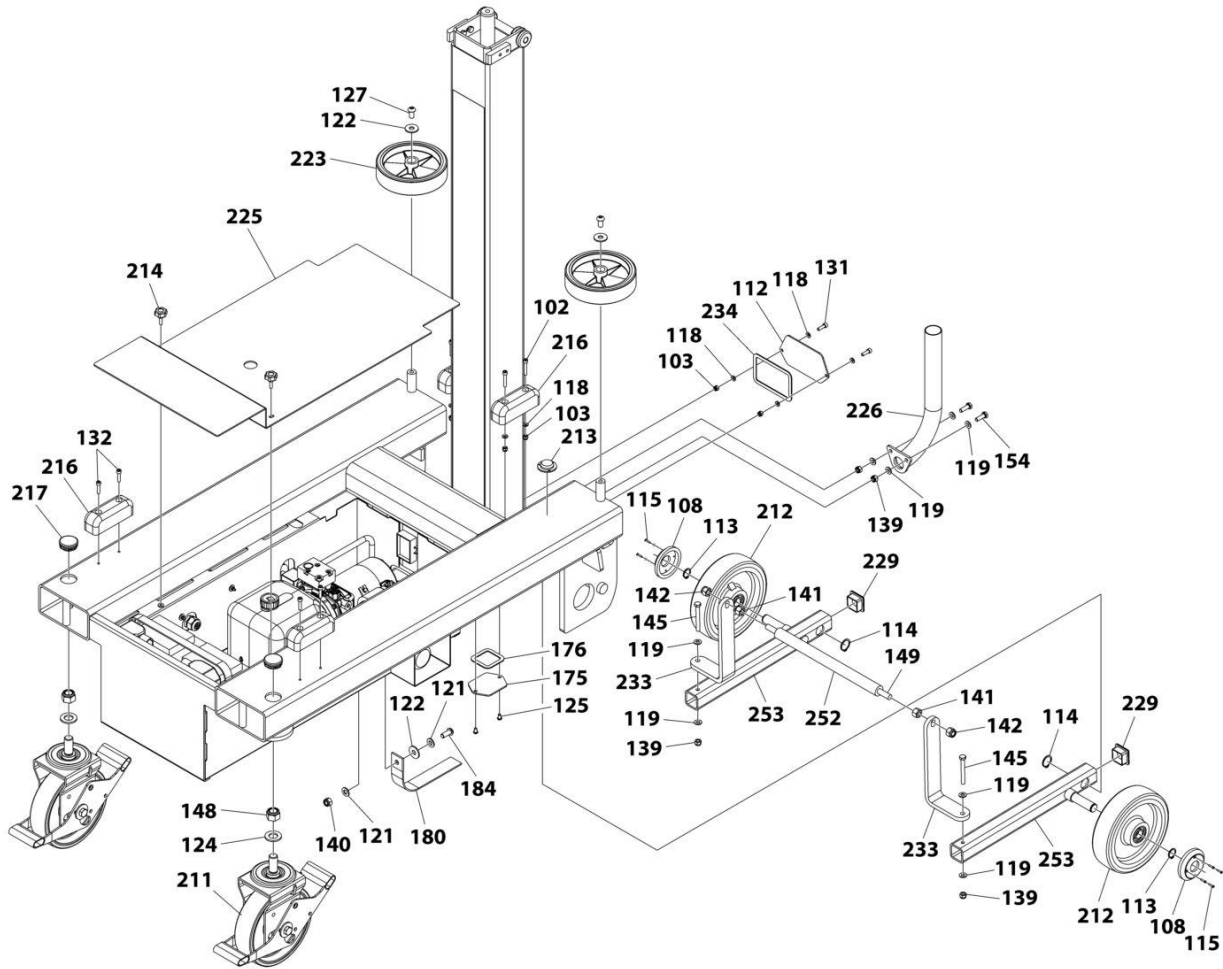
FIGURE 2-13. SPECIAL OPTIONS/ACCESSORIES/KITS

ITEM	PART NUMBER	QTY	DESCRIPTION	REV
		Ref	Note: This list is to accommodate machines ordered with special equipment. Options may not be applicable to all models. For more specific parts information contact JLG Parts Department	
		Ref	MISCELLANEOUS SPECIAL OPTIONS/ACCESSORIES/KITS	
	1001256697	Ref	Service Kits & Tools	F
	1001249640	Ref	Static Strap Kit <b>(Prior to SN P900013864)</b>	
	1001302745	Ref	Static Strap Kit <b>(SN P900013864 to Present)</b>	

**SECTION 3 - 830P SN P900013864 - P900020774**

# SECTION 3 - 830P SN P900013864 - P900020774

## FIGURE 3-1. FRAME INSTALLATION



ART\_830P\_FRAME\_3

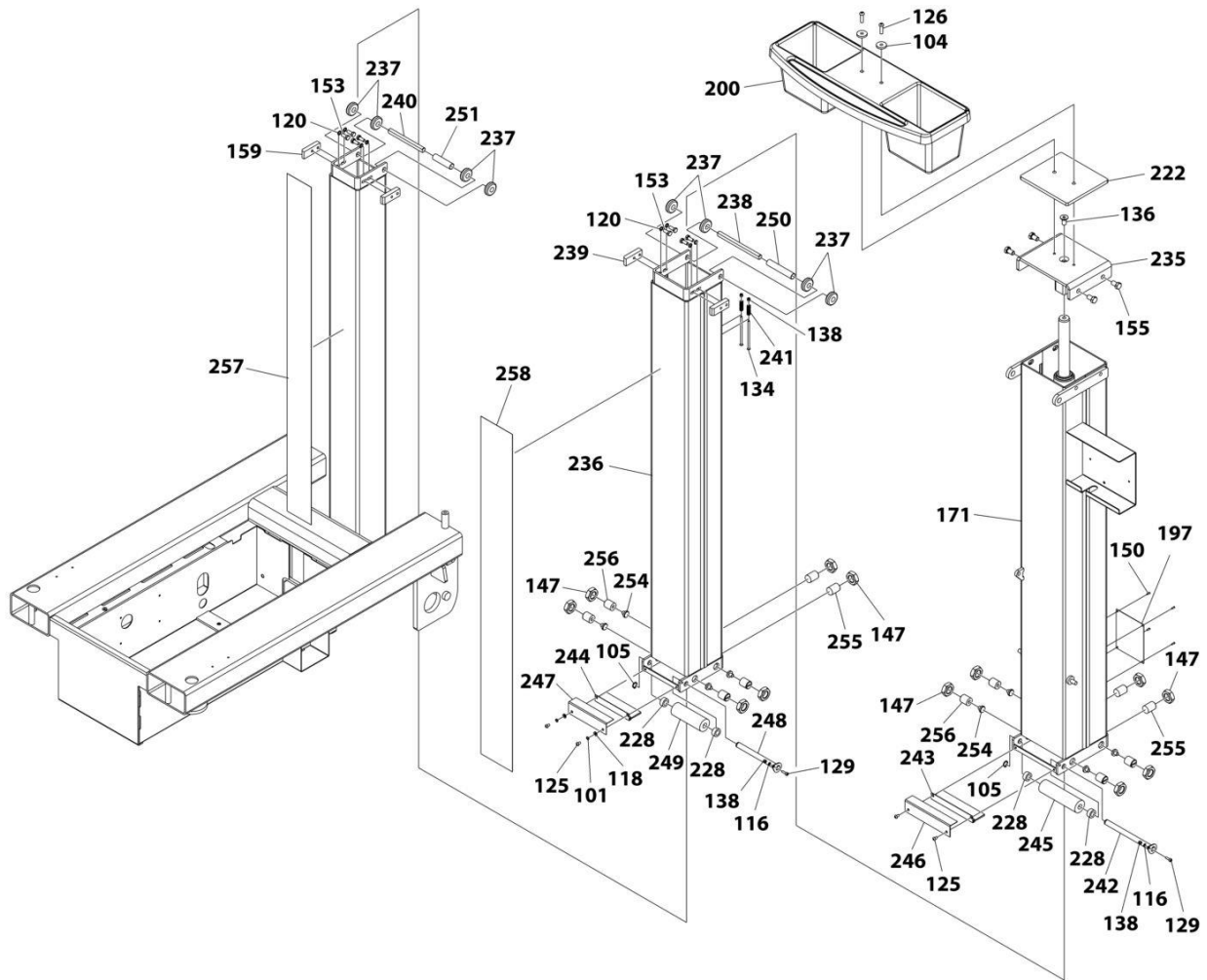
## SECTION 3 - 830P SN P900013864 - P900020774

### FIGURE 3-1. FRAME INSTALLATION

ITEM	PART NUMBER	QTY	DESCRIPTION	REV
102	1001264556	4	Bolt M6 x 35	
103	1001264557	6	Nut M6	
108	1001265093	2	Guard, Hub	
112	1001265100	1	Cover, Spine End	
113	1001265107	2	Circlip	
114	1001265108	2	Circlip	
115	1001265109	8	Bolt 4 x 5/8	
118	1001265112	8	Washer M6	
119	1001265113	10	Washer M8	
121	1001265115	2	Washer M10	
122	1001265116	3	Washer M10	
124	1001265118	2	Washer 3/4	
125	1001265119	2	Bolt M6 x 10	
127	1001265122	2	Bolt M10 x 20	
131	1001265127	2	Bolt M6 x 20	
132	1001265128	4	Bolt M6 x 25	
139	1001265135	4	Nut M8	
140	1001265136	1	Nut M10	
141	1001265137	2	Nut M12	
142	1001265138	2	Nut M12	
145	1001265141	2	Bolt M8 x 70	
148	1001265147	2	Nut 3/4	
149	1001265148	1	Bar, Threaded M12	
154	1001265203	2	Bolt M8 x 25	
172	1001265943	1	Chassis Assembly	
175	1001265946	1	Cover, Spine Bottom	
176	1001265947	1	Gasket, Spine Bottom Cover	
180	1001265952	1	Cable, Earthing	
184	1001265959	1	Bolt M10 x 25	
211	PTM1022	2	Castor - Swivel	
212	PTM103	2	Castor - Fixed	
213	PTM106	1	Level	
214	PTM107	2	Knob	
216	PTM126	4	Pad, Rest	
217	PTM163	2	Insert, Chassis	
223	PTNM302	2	Wheel, Buffer	
225	PTNM320	1	Lid, Chassis	
226	PTNM321	1	Tube, Guide	
229	PTNM332	2	Cap, End	
233	PTNM344	2	Bracket, Autobrake	
234	PTNM345	1	Gasket, Spine End Cover	
252	PTNM380	1	Roller, Brake	
253	PTNM385	2	Arm, Axle	

SECTION 3 - 830P SN P900013864 - P900020774

FIGURE 3-2. ARM INSTALLATION



ART\_830P\_ARM\_3

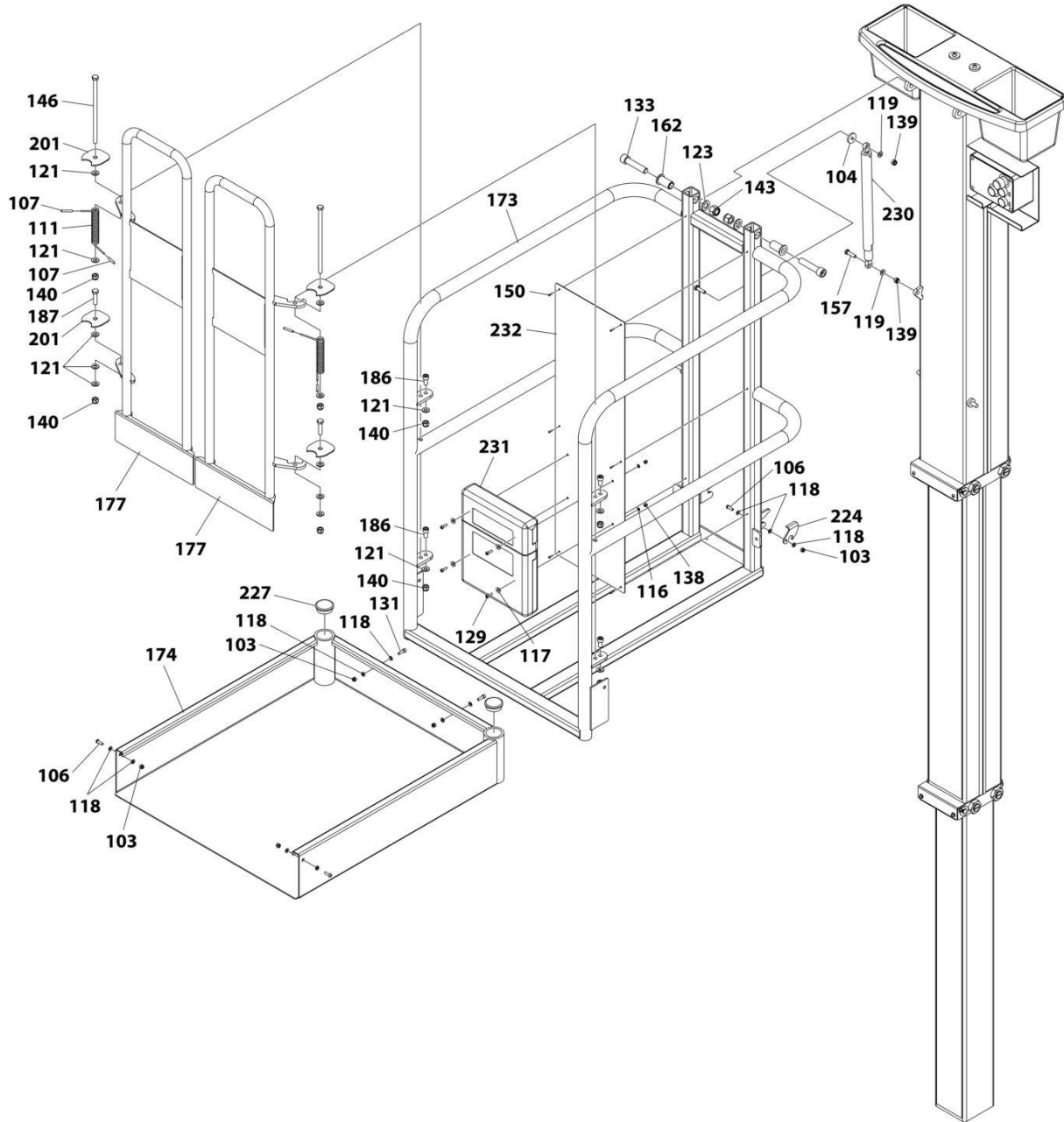
## SECTION 3 - 830P SN P900013864 - P900020774

### FIGURE 3-2. ARM INSTALLATION

ITEM	PART NUMBER	QTY	DESCRIPTION	REV
101	1001264555	2	Washer M6	
104	1001264558	2	Washer M8	
105	1001264559	2	Circlip	
116	1001265110	2	Washer M5	
118	1001265112	2	Washer M6	
120	1001265114	8	Washer M8	
125	1001265119	4	Bolt M6 x 10	
126	1001265121	2	Bolt M8 x 30	
129	1001265125	2	Bolt M5 x 16	
134	1001265130	2	Bolt M5 x 100	
136	1001265132	1	Bolt M12 x 25	
138	1001265134	4	Nut M5	
147	1001265146	12	Nut M24	
150	1001265149	4	Rivet	
153	1001265202	8	Bolt M8 x 20	
155	1001265205	4	Bolt M12 x 20	
159	1001265366	2	Pad, Wear	
171	1001265942	1	Mast, Outer	
197	See Note	NSS	Specification Plate	
200	PELM405	1	Tray, Tool	
222	PTNM300	1	Spacer, Mast Cap	
228	PTNM330	4	Spacer	
235	PTNM348	1	Cap, Mast	
236	PTNM349	1	Mast, Middle	
237	PTNM356	8	Roller, Mast	
238	PTNM3572	1	Axle	
239	PTNM358	2	Pad, Wear	
240	PTNM359	1	Axle	
241	PTNM360	2	Spring	
242	PTNM361	1	Axle	
243	PTNM363A	1	Brush	
244	PTNM363B	1	Brush	
245	PTNM364	1	Roller, Outer Mast	
246	PTNM365A	1	Cover, Roller	
247	PTNM365B	1	Cover, Roller	
248	PTNM366	1	Axle	
249	PTNM367	1	Roller, Mid Mast	
250	PTNM370	1	Spacer	
251	PTNM371	1	Spacer	
254	PTNM389	8	Insert, Wear Screw	
255	PTNM390	4	Screw, Plastic Wear	
256	PTNM390SS	8	Screw, Stainless Steel Wear	
257	PTNM393	1	Strip, Wear	
258	PTNM394	1	Strip, Wear	

SECTION 3 - 830P SN P900013864 - P900020774

FIGURE 3-3. PLATFORM INSTALLATION



ART\_830P\_PLATFORM\_3



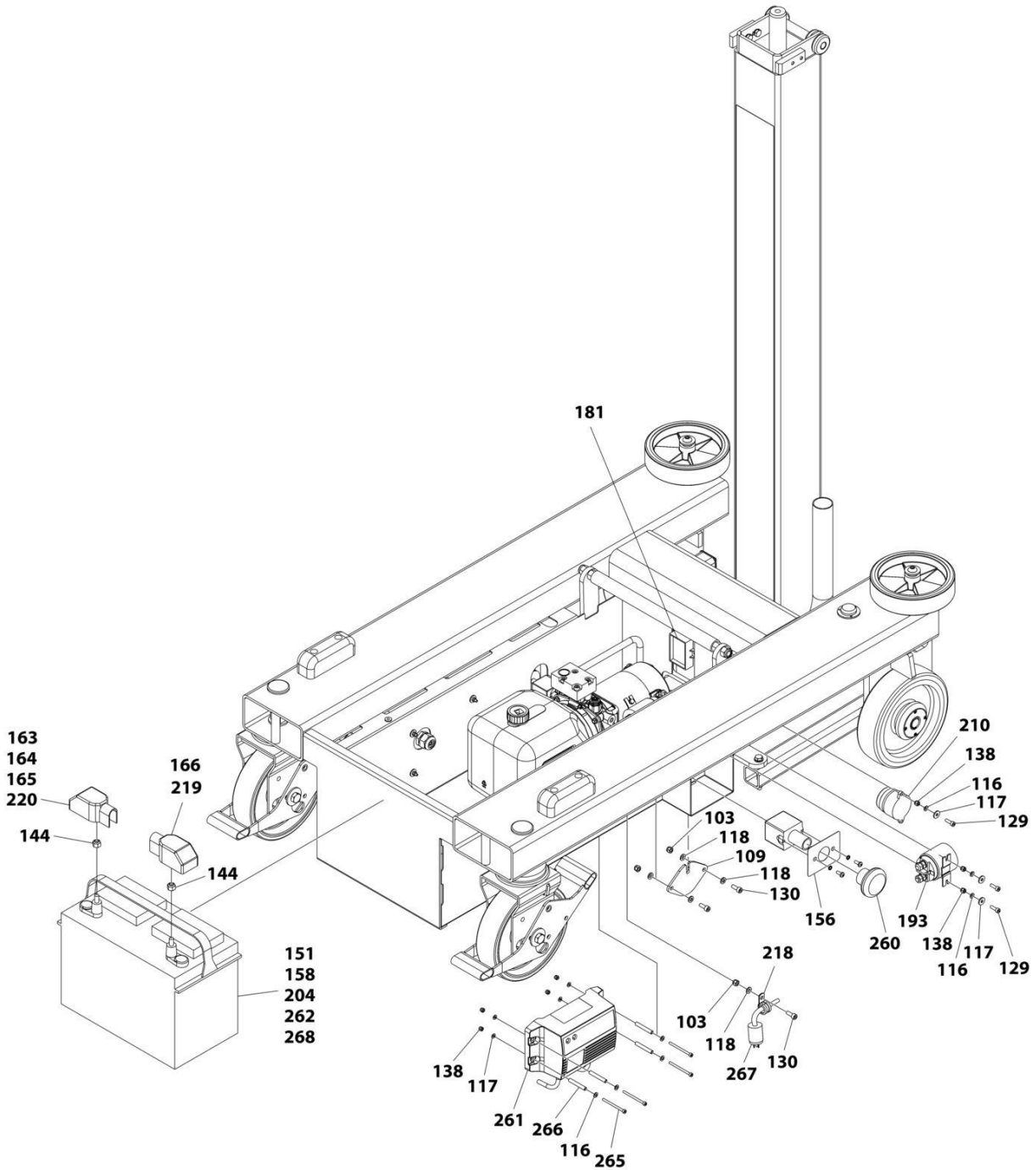
## SECTION 3 - 830P SN P900013864 - P900020774

### FIGURE 3-3. PLATFORM INSTALLATION

ITEM	PART NUMBER	QTY	DESCRIPTION	REV
103	1001264557	5	Nut M6	
104	1001264558	1	Washer M8	
106	1001264707	3	Bolt M6 x 20	
107	1001265092	4	Cap, Spring	
111	1001265099	2	Spring, Gate	
116	1001265110	2	Washer M5	
117	1001265111	4	Washer M5	
118	1001265112	11	Washer M6	
119	1001265113	2	Washer M8	
121	1001265115	14	Washer M10	
123	1001265117	2	Washer M16	
129	1001265125	4	Bolt M5 x 16	
131	1001265127	2	Bolt M6 x 20	
133	1001265129	2	Bolt M16 x 75	
138	1001265134	2	Nut M5	
139	1001265135	2	Nut M8	
140	1001265136	8	Nut M10	
143	1001265139	2	Nut M16	
146	1001265144	2	Bolt M10 x 220	
150	1001265149	6	Rivet	
157	1001265233	1	Bolt M8 x 30	
162	1001265748	2	Pivot, Platform	
173	1001265944	1	Platform	
174	1001265945	1	Tray, Platform	
177	1001265948	2	Gate, Platform	
186	1001265961	4	Bolt M10 x 20	
187	1001265962	2	Bolt M10 x 40	
201	PELM430	4	Cover, Hinge	
224	PTNM307	1	Latch, Platform	
227	PTNM323	2	Cap, End	
230	PTNM340	1	Strut	
231	PTNM342	1	Document Holder	
232	PTNM343	1	Plate, Platform Label	

# SECTION 3 - 830P SN P900013864 - P900020774

## FIGURE 3-4. ELECTRICAL INSTALLATION



ART\_830P\_ELECTRICAL\_3

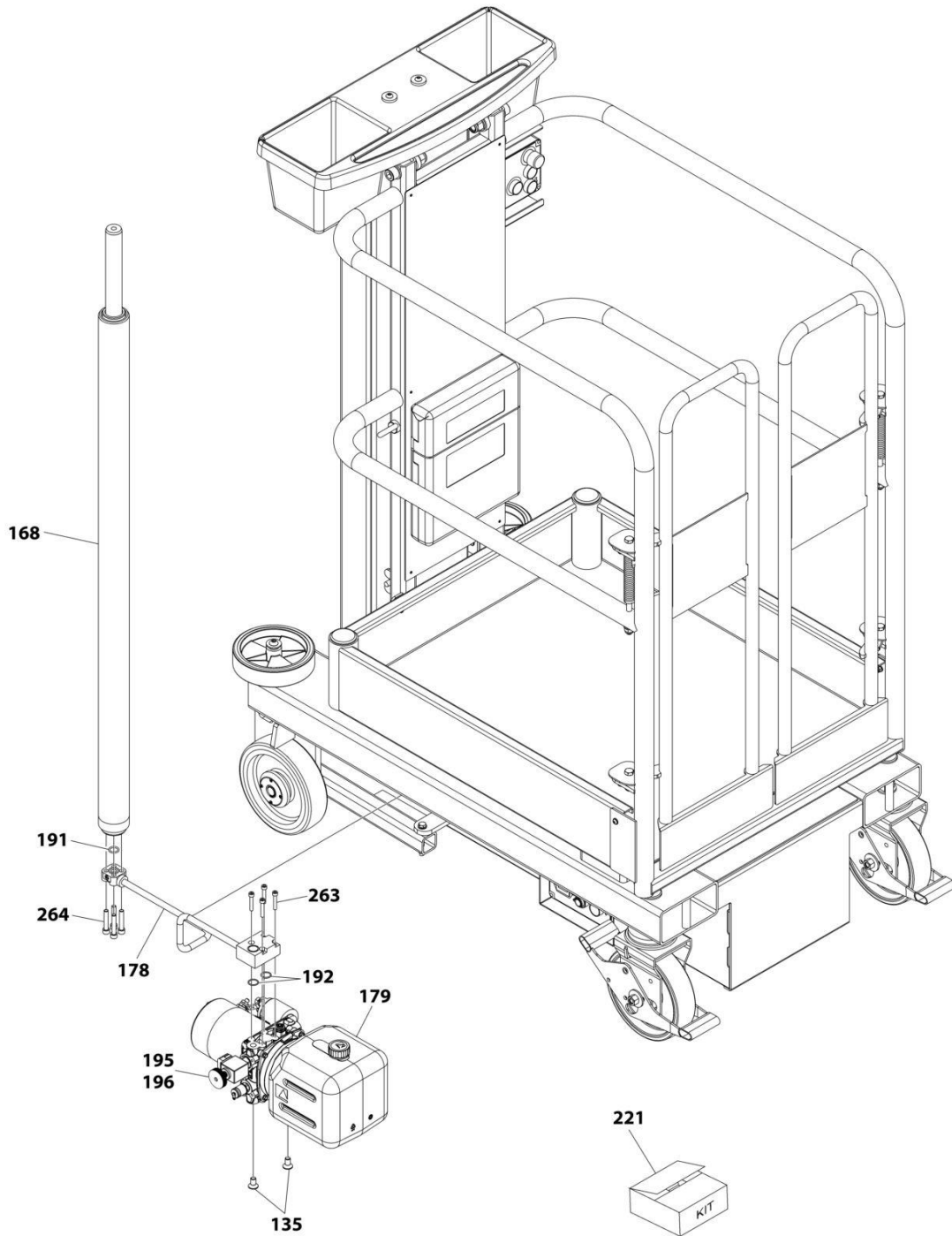
## SECTION 3 - 830P SN P900013864 - P900020774

### FIGURE 3-4. ELECTRICAL INSTALLATION

ITEM	PART NUMBER	QTY	DESCRIPTION	REV
103	1001264557	3	Nut M6	
109	1001265094	1	Cover, Charger Lead Hole	
116	1001265110	8	Washer M5	
117	1001265111	4	Washer M5	
118	1001265112	5	Washer M6	
129	1001265125	4	Bolt M5 x 16	
130	1001265126	3	Bolt M6 x 16	
138	1001265134	4	Nut M5	
144	1001265140	2	Nut 5/16	
151	1001265150	1	Ring Connector	
156	1001265232	1	Decal, Emergency Stop	
158	1001265235	1	Tie Strap	
163	1001265909	1	Cable - Positive - Isolator to Chassis Mounted Solenoid (165MM)	
164	1001265910	1	Cable - Positive - Chassis Mounted Solenoid to Powerpack Mounted Solenoid (250MM)	
165	1001265911	1	Cable - Positive Battery Terminal to Isolator (1000MM)	
166	1001265912	1	Cable - Negative Battery Terminal to Powerpack Stud (1000MM)	
181	1001265956	1	Harness, Chassis 830P	
181	PTNE208	1	VALVE,SOLENOID 12V	
193	PPE612	1	Solenoid	
204	PTE002	1	Battery - Standard <b>(Prior to SN P900017127)</b>	
210	PTE215	1	Siren, Power Pack	
218	PTM172	1	Clip	
219	PTNE213	1	Cover, Battery Terminal - Blue/Black	
220	PTNE214	1	Cover, Battery Terminal - Red	
260	PTNE200	1	Switch, Emergency Stop	
261	1001276409	1	Charger, Battery	
262	1001277683	1	Battery - Standard	
265	1001277888	4	Bolt M4 x 75	
266	1001277889	4	Sleeve, Charger	
267	4460138	1	Plug	
268	PTNM341	1	Key	

**SECTION 3 - 830P SN P900013864 - P900020774**

**FIGURE 3-5. HYDRAULICS INSTALLATION**



ART\_830P\_HYDRAULICS\_3

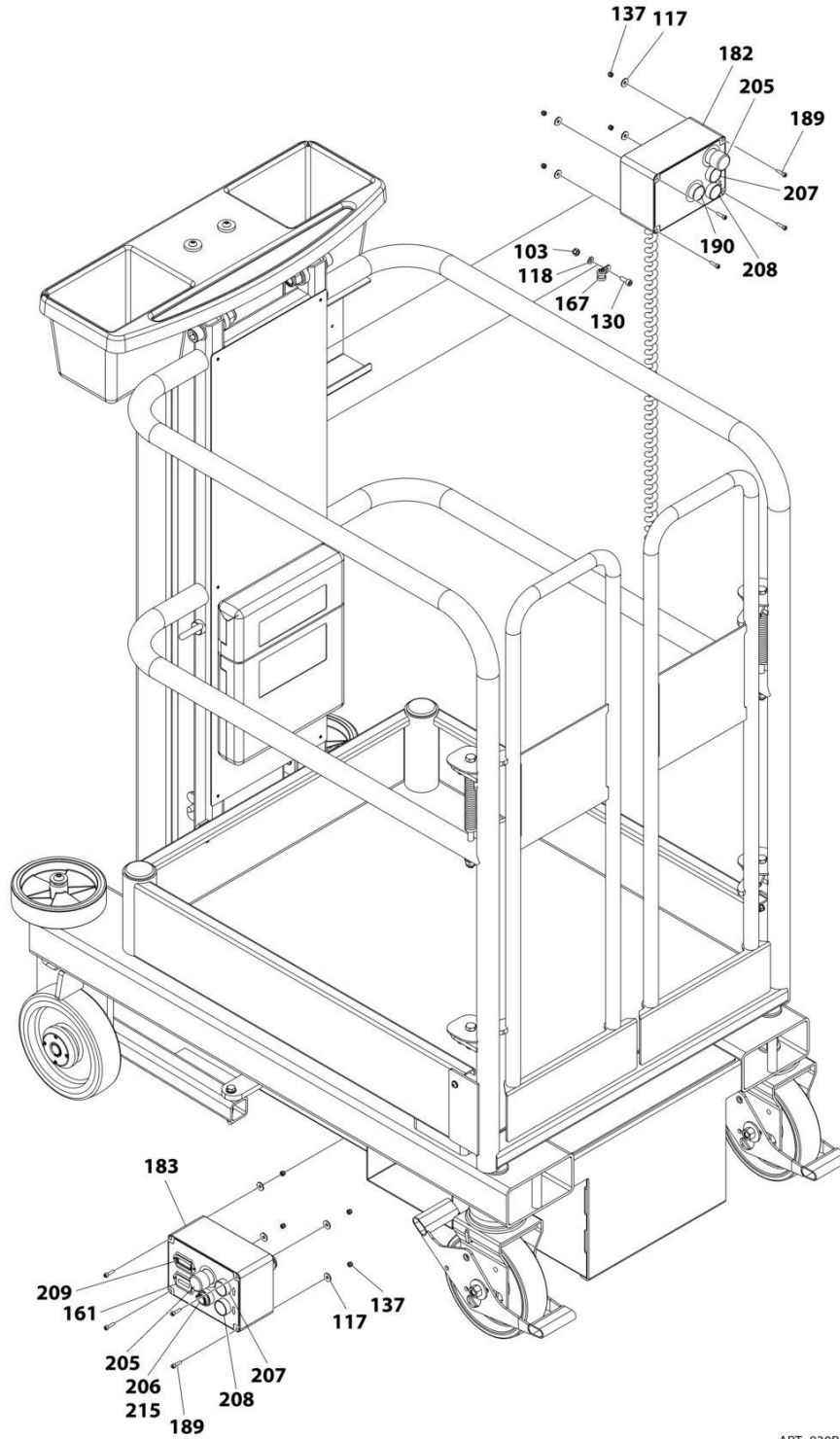
# SECTION 3 - 830P SN P900013864 - P900020774

## FIGURE 3-5. HYDRAULICS INSTALLATION

ITEM	PART NUMBER	QTY	DESCRIPTION	REV
135	1001265131	2	Bolt M10 x 20	
168	1001265915	1	Cylinder	
178	1001265949	1	Pipe, Hydraulic	
179	1001265950	1	Power Pack	
191	1001266745	1	O-Ring	
192	1001266747	2	O-Ring	
195	1001266750	1	Valve, Powerpack Solenoid	
196	1001266751	1	Valve, Emergency Lowering Cartridge	
221	PTNH277	1	Kit, Seal	
263	1001274125	4	Bolt M6 x 35	
264	1001274126	4	Bolt M8 x 35	

SECTION 3 - 830P SN P900013864 - P900020774

FIGURE 3-6. GROUND CONTROLS INSTALLATION



ART\_830P\_GROUND CONTROLS\_3

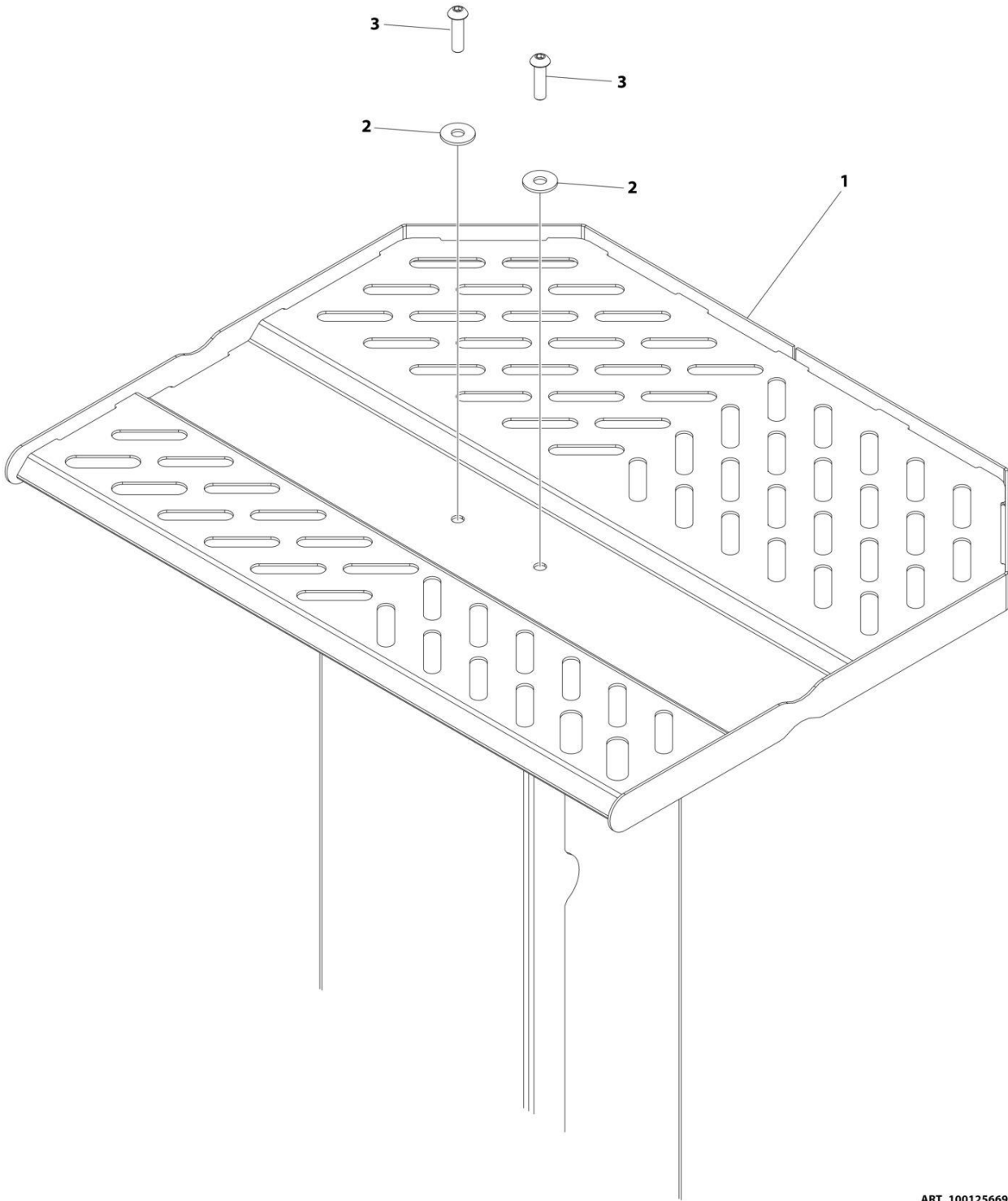
## SECTION 3 - 830P SN P900013864 - P900020774

### FIGURE 3-6. GROUND CONTROLS INSTALLATION

ITEM	PART NUMBER	QTY	DESCRIPTION	REV
103	1001264557	1	Nut M6	
117	1001265111	8	Washer M5	
118	1001265112	1	Washer M6	
130	1001265126	1	Bolt M6 x 16	
137	1001265133	8	Nut M4	
161	1001301103	1	Meter, Hour <b>(SN P900020711 to Present)</b>	
167	1001265913	1	Clip	
182	1001265957	1	Controls, Platform	
183	1001265958	1	Controls, Ground	
189	1001265988	8	Bolt M4 x 16	
190	1001266744	1	Switch, Push Button	
205	PTE003	2	Switch, Emergency Stop	
206	PTE005	1	Switch, Key	
207	PTE006	2	Switch, Push Button	
208	PTE007	2	Switch, Push Button	
209	PTE021	1	Meter, Battery Condition	
215	PTM112	1	Key, Replacement	

**SECTION 3 - 830P SN P900013864 - P900020774**

**FIGURE 3-7. STOCK PICKER TRAY INSTALLATION**



ART\_1001256698



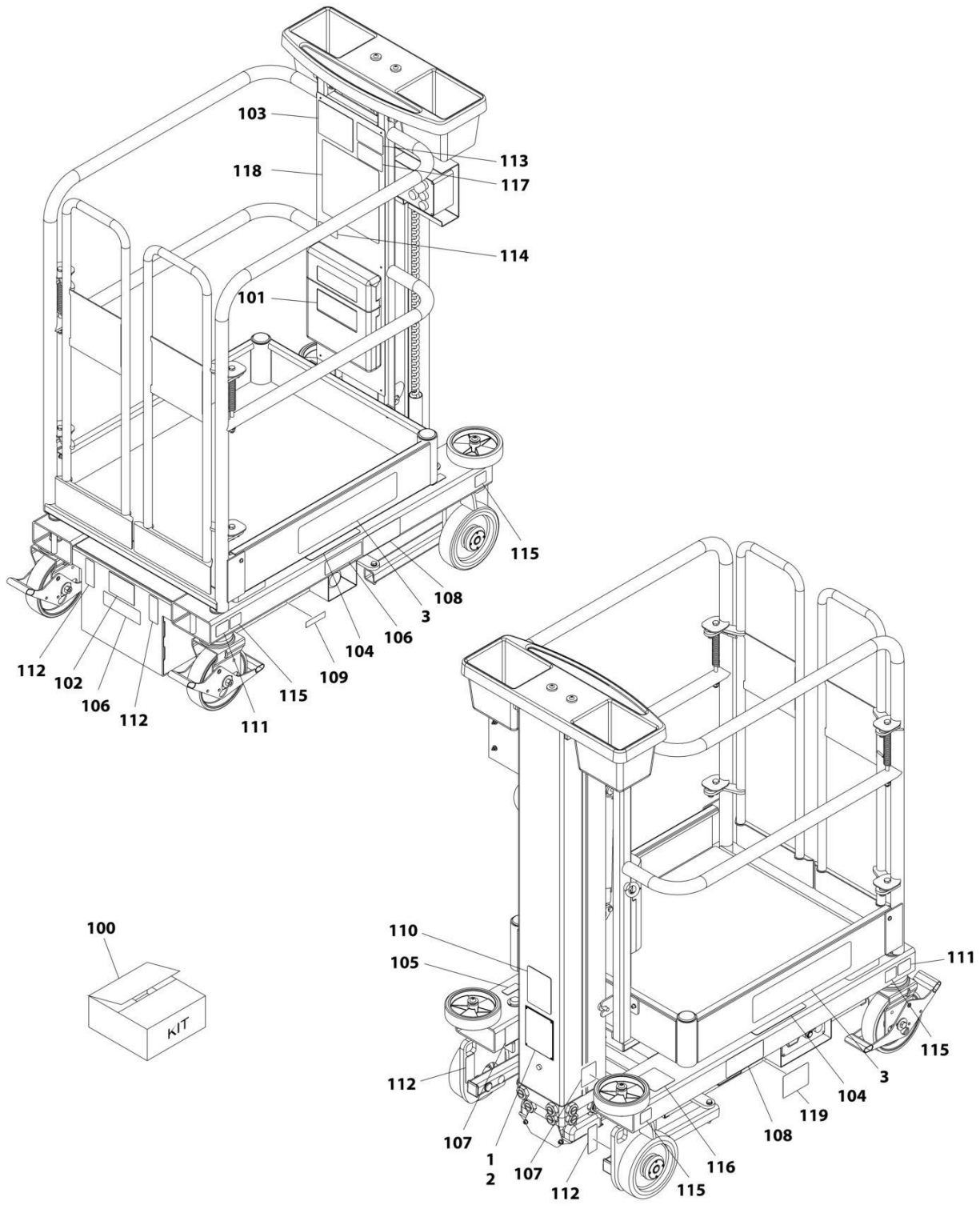
# SECTION 3 - 830P SN P900013864 - P900020774

## FIGURE 3-7. STOCK PICKER TRAY INSTALLATION

ITEM	PART NUMBER	QTY	DESCRIPTION	REV
	1001256698	Ref	TOOL TRAY INSTALLATION	B
1	1001249314	1	Tool Tray	
2	1001264558	2	Washer M8	
3	1001265121	2	Bolt M8 x 30	

SECTION 3 - 830P SN P900013864 - P900020774

FIGURE 3-8. DECALS INSTALLATION (ANSI SPECS)



ART\_1001251194\_E

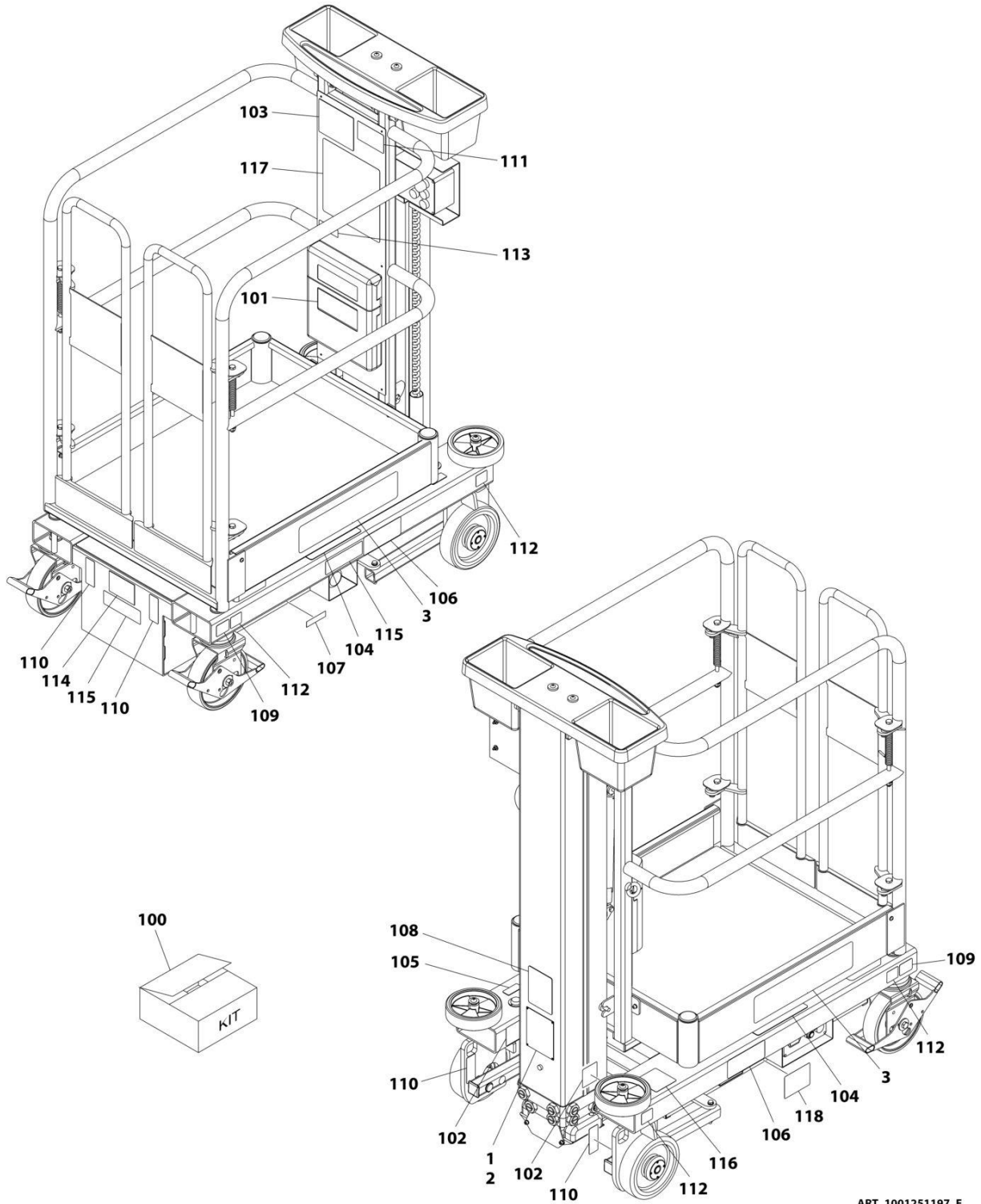
## SECTION 3 - 830P SN P900013864 - P900020774

### FIGURE 3-8. DECALS INSTALLATION (ANSI SPECS)

ITEM	PART NUMBER	QTY	DESCRIPTION	REV
	1001251194	Ref	DECAL INSTALLATION - 830P	E
1	3820001	4	Rivet <b>(Prior to SN P900013864)</b>	
2	See Note	NSS	Nameplate - Manufacturers Serial Number (Note: Not Available for Purchase) <b>(Prior to SN P900013864)</b>	
3	1001265941	2	Decal - Model 830P by JLG <b>(SN P900006592 to Present, Including P900005535)</b>	
100	1001265953	1	Decal - Kit	
101	1701509	1	Decal - Manual	
102	1702391	1	Decal - Hand Crushing	
103	1703781	1	Decal - Electrical Hazard	
104	1703786	2	Decal - Crushing Hazard	
105	1703789	1	Decal - Level Indicator	
106	1703813	2	Decal - Warning Battery Ventilation	
107	1703817	2	Decal - Fork Lift	
108	1706832	2	Decal - Danger Electrocution	
109	3251243	1	Nameplate	
110	1001131270	1	Decal - Patent	
111	1001213208	2	Decal - Caster Lock Direction	
112	1001213442	4	Decal - Lifting and Tie Down	
113	1001213488	1	Decal - Capacity	
114	1001213582	1	Decal - Fall Restraint	
115	1001213587	4	Decal - Wheel Load	
116	1001223055	1	Decal - Yearly Inspection	
117	1001231801	1	Decal - Prop 65 Warning	
118	1001251170	1	Decal - Warning	
119	1001260980	1	Decal - Emergency Lowering	

SECTION 3 - 830P SN P900013864 - P900020774

FIGURE 3-9. DECALS INSTALLATION (BRAZIL SPECS)



ART\_1001251197\_E

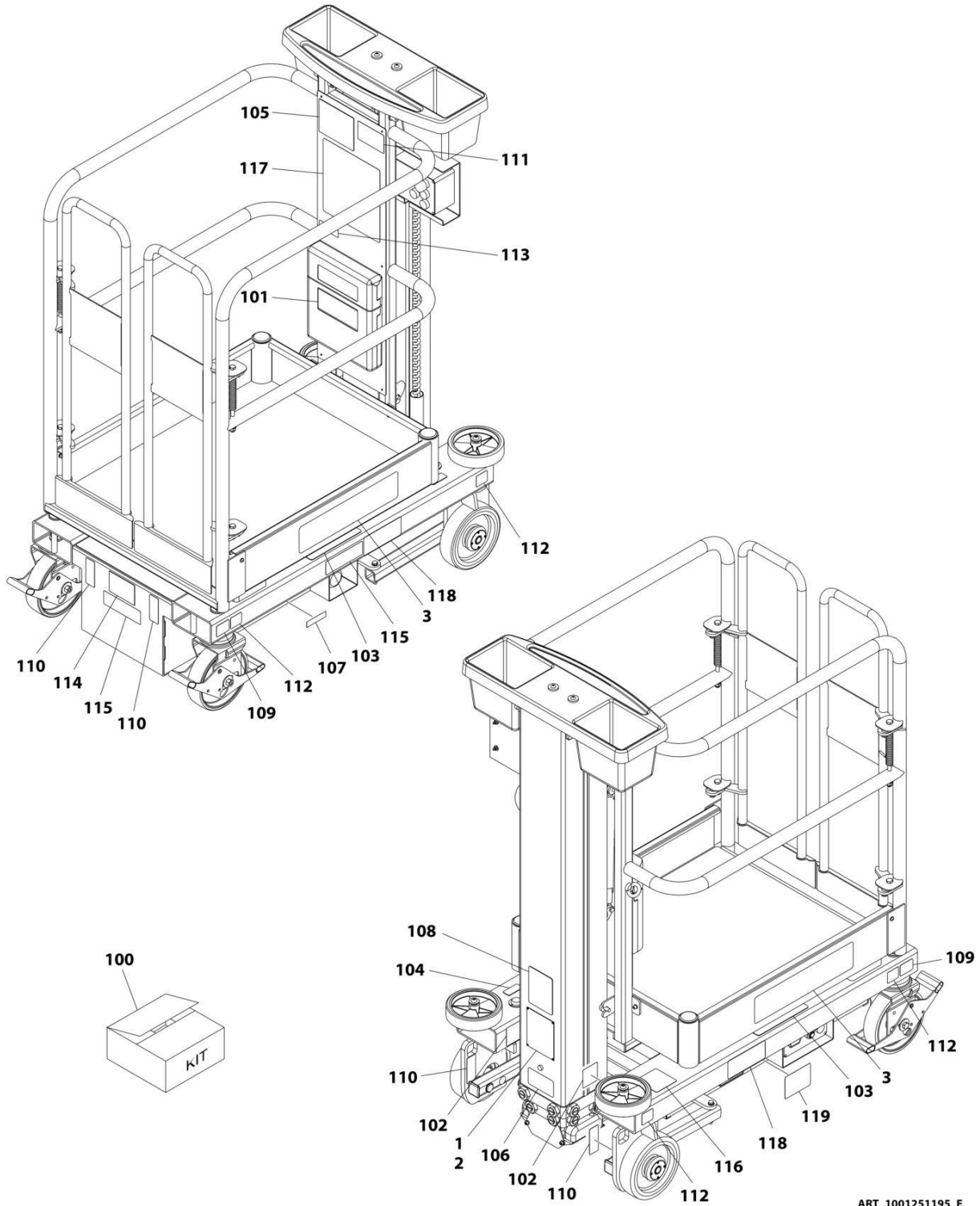
## SECTION 3 - 830P SN P900013864 - P900020774

### FIGURE 3-9. DECALS INSTALLATION (BRAZIL SPECS)

ITEM	PART NUMBER	QTY	DESCRIPTION	REV
	1001251197	Ref	DECAL INSTALLATION - 830P	E
1	3820001	4	Rivet <b>(Prior to SN P900013864)</b>	
2	See Note	NSS	Nameplate - Manufacturers Serial Number (Note: Not Available for Purchase) <b>(Prior to SN P900013864)</b>	
3	1001265941	2	Decal - Model 830P by JLG <b>(SN P900006592 to Present, Including P900005535)</b>	
100	1001271000	1	Decal - Kit	
101	1701509	1	Decal - Manual	
102	1703817	2	Decal - Fork Lift	
103	1704021	1	Decal - Electrical Hazard	
104	1704024	2	Decal - Crushing Hazard	
105	1704026	1	Decal - Level Indicator	
106	1706833	2	Decal - Danger Electrocution	
107	3251243	1	Nameplate	
108	1001131270	1	Decal - Patent	
109	1001213208	2	Decal - Caster Lock Direction	
110	1001213442	4	Decal - Lifting and Tie Down	
111	1001213488	1	Decal - Capacity	
112	1001213587	4	Decal - Wheel Load	
113	1001241802	1	Decal - Lanyard Attachment	
114	1001241805	1	Decal - Hand Crushing	
115	1001241806	2	Decal - Explosion	
116	1001245185	1	Decal - Yearly Inspection	
117	1001251173	1	Decal - Warning	
118	1001260983	1	Decal - Emergency Lowering	

**SECTION 3 - 830P SN P900013864 - P900020774**

**FIGURE 3-10. DECALS INSTALLATION (CSA SPECS)**



ART\_1001251195\_E

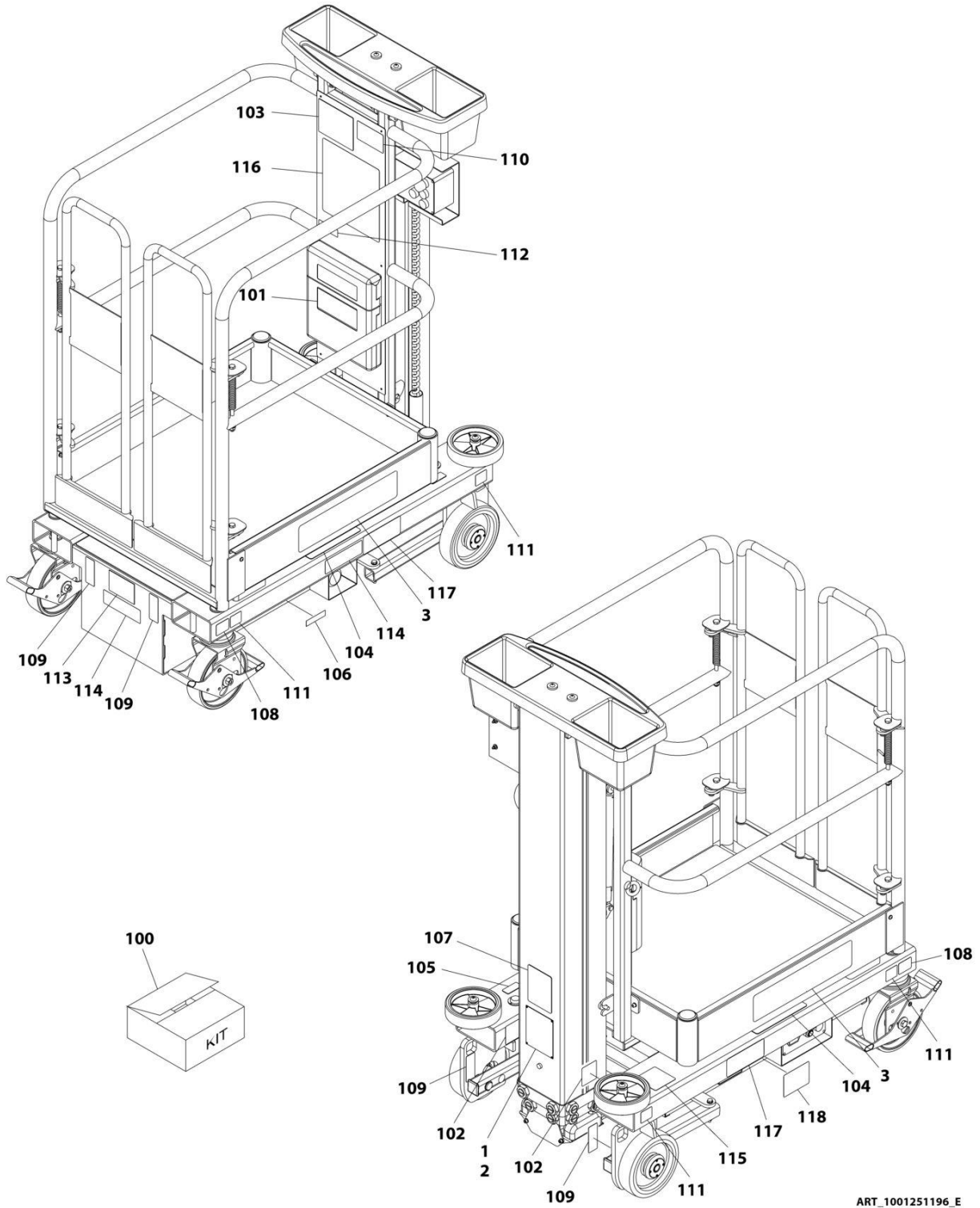
## SECTION 3 - 830P SN P900013864 - P900020774

### FIGURE 3-10. DECALS INSTALLATION (CSA SPECS)

ITEM	PART NUMBER	QTY	DESCRIPTION	REV
	1001251195	Ref	DECAL INSTALLATION - 830P	E
1	3820001	4	Rivet <b>(Prior to SN P900013864)</b>	
2	See Note	NSS	Nameplate - Manufacturers Serial Number (Note: Not Available for Purchase) <b>(Prior to SN P900013864)</b>	
3	1001265941	2	Decal - Model 830P by JLG <b>(SN P900006592 to Present, Including P900005535)</b>	
100	1001270998	1	Decal - Kit	
101	1701509	1	Decal - Manual	
102	1703817	2	Decal - Fork Lift	
103	1704039	2	Decal - Crushing Hazard	
104	1704041	1	Decal - Level Indicator	
105	1704795	1	Decal - Electrical Hazard	
106	1706351	1	Decal - CSA	
107	3251243	1	Nameplate	
108	1001131270	1	Decal - Patent	
109	1001213208	2	Decal - Caster Lock Direction	
110	1001213442	4	Decal - Lifting and Tie Down	
111	1001213488	1	Decal - Capacity	
112	1001213587	4	Decal - Wheel Load	
113	1001215009	1	Decal - Fall Restraint	
114	1001215113	1	Decal - Warning Hand Crushing	
115	1001215217	2	Decal - Warning Explosion Fire	
116	1001245181	1	Decal - Yearly Inspection	
117	1001251171	1	Decal - Warning	
118	1001256551	2	Decal - Danger Electrocution	
119	1001260981	1	Decal - Emergency Lowering	

# SECTION 3 - 830P SN P900013864 - P900020774

## FIGURE 3-11. DECALS INSTALLATION (LATIN AMERICAN SPECS)



ART\_1001251196\_E



## SECTION 3 - 830P SN P900013864 - P900020774

**FIGURE 3-11. DECALS INSTALLATION (LATIN AMERICAN SPECS)**

ITEM	PART NUMBER	QTY	DESCRIPTION	REV
	1001251196	Ref	DECAL INSTALLATION - 830P	E
1	3820001	4	Rivet <b>(Prior to SN P900013864)</b>	
2	See Note	NSS	Nameplate - Manufacturers Serial Number (Note: Not Available for Purchase) <b>(Prior to SN P900013864)</b>	
3	1001265941	2	Decal - Model 830P by JLG <b>(SN P900006592 to Present, Including P900005535)</b>	
100	1001270999	1	Decal - Kit	
101	1701509	1	Decal - Manual	
102	1703817	2	Decal - Fork Lift	
103	1704029	1	Decal - Electrical Hazard	
104	1704032	2	Decal - Crushing Hazard	
105	1704034	1	Decal - Level Indicator	
106	3251243	1	Nameplate	
107	1001131270	1	Decal - Patent	
108	1001213208	2	Decal - Caster Lock Direction	
109	1001213442	4	Decal - Lifting and Tie Down	
110	1001213488	1	Decal - Capacity	
111	1001213587	4	Decal - Wheel Load	
112	1001241792	1	Decal - Lanyard Attachment	
113	1001241795	1	Decal - Hand Crushing	
114	1001241797	2	Decal - Explosion	
115	1001245183	1	Decal - Yearly Inspection	
116	1001251172	1	Decal - Warning	
117	1001256552	2	Decal - Danger Electrical	
118	1001260982	1	Decal - Emergency Lowering	

## SECTION 3 - 830P SN P900013864 - P900020774

FIGURE 3-12. RECOMMENDED SERVICE PARTS STOCK

ITEM	PART NUMBER	QTY	DESCRIPTION	REV
		Ref	Note: The following list will service one machine (built to current production per date on the front cover) with emergency repair parts which can be installed in the field. Parts from the list should be replaced when inventory is depleted to keep service parts stock supplied. For further information, contact your JLG dealer or the JLG Industries Parts Department.	
	1001265939	2	Fuse, 10Amp (Chassis Electrical)	
	PTM112	1	Key, Replacement (Ground Controls)	
	PPE612	1	Solenoid (Chassis Electrical)	
	1001265940	1	Switch, Emergency Stop (Chassis Electrical)	
	PTE003	1	Switch, Emergency Stop (Ground and Platform Controls)	
	PTE005	1	Switch, Key (Ground Controls)	
	PTE006	1	Switch, Push Button (Ground and Platform Controls)	
	PTE007	1	Switch, Push Button (Ground and Platform Controls)	
	1001266744	1	Switch, Push Button (Platform Controls)	



## SECTION 3 - 830P SN P900013864 - P900020774

FIGURE 3-13. SPECIAL OPTIONS/ACCESSORIES/KITS

ITEM	PART NUMBER	QTY	DESCRIPTION	REV
		Ref	Note: This list is to accommodate machines ordered with special equipment. Options may not be applicable to all models. For more specific parts information contact JLG Parts Department	
		Ref	MISCELLANEOUS SPECIAL OPTIONS/ACCESSORIES/KITS	
	1001256697	Ref	Service Kits & Tools	F
	1001249640	Ref	Static Strap Kit <b>(Prior to SN P900013864)</b>	
	1001302745	Ref	Static Strap Kit <b>(SN P900013864 to Present)</b>	

**PART NUMBER INDEX**

# SECTION 3 - 830P SN P900013864 - P900020774

1001131270...49, 51, 53, 55, 75, 77, 79, 81	1001260982..... 55, 81	1001265147 .....11, 35, 61	1703786..... 23, 49, 75
1001213208...23, 25, 27, 29, 49, 51, 53, 55, 75, 77, 79, 81	1001260983..... 51, 77	1001265148 .....11, 35, 61	1703789..... 23, 49, 75
1001213442...23, 25, 27, 29, 49, 51, 53, 55, 75, 77, 79, 81	1001264555..... 13, 37, 63	1001265149 ..13, 15, 37, 39, 63, 65	1703813..... 23, 49, 75
1001213488...23, 25, 27, 29, 49, 51, 53, 55, 75, 77, 79, 81	1001264556.. 11, 19, 35, 43, 61	1001265150 .....17, 41, 67	1703817.. 23, 25, 27, 29, 49, 51, 53, 55, 75, 77, 79, 81
1001213490...23, 25, 27, 29	1001264557.. 11, 15, 17, 21, 35, 39, 41, 45, 61, 65, 67, 71	1001265202 .....13, 37, 63	1704021..... 27, 51, 77
1001213551...23, 25, 27, 29, 49, 51, 53, 55	1001264558.. 13, 15, 37, 39, 47, 63, 65, 73	1001265203 .....11, 35, 61	1704024..... 27, 51, 77
1001213582.....23, 49, 75	1001264559..... 13, 37, 63	1001265205 .....13, 37, 63	1704026..... 27, 51, 77
1001213587...23, 25, 27, 29, 49, 51, 53, 55, 75, 77, 79, 81	1001264707 ..... 15, 39, 65	1001265232 .....17, 41, 67	1704029..... 29, 55, 81
1001213946..... 23	1001265092..... 15, 39, 65	1001265233 .....15, 39, 65	1704032..... 29, 55, 81
1001214107...23, 25, 27, 29, 49, 51, 53, 55	1001265093..... 35, 61	1001265235 .....17, 41, 67	1704034..... 29, 55, 81
1001214109...23, 25, 27, 29, 49, 51, 53, 55	1001265094 ..... 17, 41, 67	1001265366 .....37, 63	1704039..... 25, 53, 79
1001214198..... 23	1001265097 ..... 17, 41	1001265644 .....45	1704041..... 25, 53, 79
1001214251..... 23	1001265099..... 39, 65	1001265646 .....45	1704795..... 25, 53, 79
1001215004..... 25	1001265100..... 35, 61	1001265748 .....39, 65	1706351..... 23, 25, 53, 79
1001215006..... 25	1001265107..... 35, 61	1001265909..... 41, 67	1706832..... 49, 75
1001215008..... 25	1001265108..... 11, 35, 61	1001265910 .....41, 67	1706833..... 51, 77
1001215009.....25, 53, 79	1001265109..... 35, 61	1001265911 .....41, 67	3251243.. 23, 25, 27, 29, 49, 51, 53, 55, 75, 77, 79, 81
1001215113.....25, 53, 79	1001265110.. 13, 15, 17, 37, 39, 41, 63, 65, 67	1001265912 .....41, 67	3820001.. 23, 25, 27, 29, 49, 51, 53, 55, 75, 77, 79, 81
1001215217.....25, 53, 79	1001265111.. 15, 17, 39, 41, 45, 65, 67, 71	1001265913 .....21, 45, 71	4460138.....67
1001220252..... 17	1001265112.. 11, 13, 15, 17, 21, 35, 37, 39, 41, 45, 61, 63, 65, 67, 71	1001265915 .....43, 69	PELM405..... 13, 37, 63
1001220253..... 17	1001265113.. 11, 15, 35, 39, 61, 65	1001265939 .....30, 56, 82	PELM430..... 15, 39, 65
1001220257..... 17	1001265114..... 13, 37, 63	1001265940 ...30, 41, 56, 82	PPE612.... 30, 41, 56, 67, 82
1001223055..... 49, 75	1001265115.. 11, 15, 35, 39, 61, 65	1001265941 ..49, 51, 53, 55, 75, 77, 79, 81	PTE001..... 17
1001231801.....23, 49, 75	1001265116..... 11, 35, 61	1001265942 .....37, 63	PTE0012..... 41
1001241788..... 29	1001265117 ..... 15, 39, 65	1001265943 .....61	PTE001E ..... 41
1001241789..... 27	1001265118..... 11, 35, 61	1001265944 .....39, 65	PTE002..... 41, 67
1001241792.....29, 55, 81	1001265119.. 11, 13, 35, 37, 61, 63	1001265945 .....39, 65	PTE002AGM ..... 17
1001241795.....29, 55, 81	1001265121.. 13, 37, 47, 63, 73	1001265946 .....11, 35, 61	PTE003.... 30, 45, 56, 71, 82
1001241797.....29, 55, 81	1001265122..... 11, 35, 61	1001265947 .....11, 35, 61	PTE005.... 30, 45, 56, 71, 82
1001241798..... 29	1001265123 ..... 17, 41	1001265948 .....39, 65	PTE006.... 30, 45, 56, 71, 82
1001241799..... 29	1001265125.. 13, 15, 17, 37, 39, 41, 63, 65, 67	1001265949 .....43, 69	PTE007.... 30, 45, 56, 71, 82
1001241802.....27, 51, 77	1001265126.. 17, 21, 41, 45, 67, 71	1001265950 .....43, 69	PTE021..... 45, 71
1001241805.....27, 51, 77	1001265127.. 11, 15, 35, 39, 61, 65	1001265952 .....11, 35, 61	PTE215..... 17, 41, 67
1001241806.....27, 51, 77	1001265128..... 11, 35, 61	1001265953 .....75	PTM1022..... 11, 35, 61
1001241807..... 27	1001265129..... 15, 39, 65	1001265956 .....67	PTM103..... 11, 35, 61
1001241808..... 27	1001265130..... 13, 37, 63	1001265957 .....45, 71	PTM106..... 11, 35, 61
1001245181..... 53, 79	1001265131 ..... 19, 43, 69	1001265958 .....45, 71	PTM107..... 11, 35, 61
1001245183..... 55, 81	1001265132 ..... 13, 37, 63	1001265960 .....19, 43	PTM112... 30, 45, 56, 71, 82
1001245185..... 51, 77	1001265133..... 41, 45, 71	1001265961 .....15, 39, 65	PTM126..... 11, 35, 61
1001249314..... 47, 73	1001265134.. 13, 15, 17, 37, 39, 41, 63, 65, 67	1001265962 .....15, 39, 65	PTM133..... 15
1001249640.....32, 58, 84	1001265135.. 11, 15, 35, 39, 61, 65	1001265963 .....17, 41	PTM163..... 11, 35, 61
1001251170..... 49, 75	1001265136.. 11, 15, 35, 39, 61, 65	1001265988 .....45, 71	PTM172..... 17, 41, 67
1001251171..... 53, 79	1001265137 ..... 11, 35, 61	1001266744 ..30, 45, 56, 71, 82	PTNE200..... 17, 67
1001251172..... 55, 81	1001265138..... 11, 35, 61	1001266745 .....19, 43, 69	PTNE202..... 21
1001251173..... 51, 77	1001265139 ..... 15, 39, 65	1001266747 .....19, 43, 69	PTNE204..... 21
1001251194..... 49, 75	1001265140 ..... 17, 41, 67	1001266750 .....43, 69	PTNE205..... 17
1001251195..... 53, 79	1001265141 ..... 11, 35, 61	1001266751 .....43, 69	PTNE208..... 67
1001251196..... 55, 81	1001265144 ..... 15, 39, 65	1001269772 .....17, 41	PTNE211..... 21
1001251197..... 51, 77	1001265146 ..... 37, 63	1001270998 .....79	PTNE213..... 17, 41, 67
1001256551..... 53, 79		1001270999 .....81	PTNE214..... 17, 41, 67
1001256552..... 55, 81		1001271000 .....77	PTNH251 ..... 19
1001256697.....32, 58, 84		1001274125 .....69	PTNH252 ..... 17
1001256698..... 47, 73		1001274126 .....69	PTNH255 ..... 19
1001260980..... 49, 75		1001276409 .....67	PTNH256 ..... 19
1001260981..... 53, 79		1001277683 .....67	PTNH260 ..... 19
		1001277888 .....67	PTNH276C..... 19
		1001277889 .....67	PTNH277 ..... 19, 43, 69
		1001301103 .....71	PTNM300..... 13, 37, 63
		1001302745 .....32, 58, 84	PTNM302..... 11, 35, 61
		1701509 ..23, 25, 27, 29, 49, 51, 53, 55, 75, 77, 79, 81	PTNM305..... 15
		1702391 .....23, 49, 75	PTNM307..... 39, 65
		1703781 .....23, 49, 75	PTNM320..... 35, 61
			PTNM320JO ..... 11
			PTNM321..... 35, 61

## SECTION 3 - 830P SN P900013864 - P900020774

PTNM321JO.....	11	PTNM348JC.....	13	PTNM360.....	13, 37, 63	PTNM370.....	13, 37, 63
PTNM323.....	15, 39, 65	PTNM349.....	37, 63	PTNM361.....	13, 37, 63	PTNM371.....	13, 37, 63
PTNM329JC.....	13	PTNM349JC.....	13	PTNM363A.....	13, 37, 63	PTNM380.....	11, 35, 61
PTNM330.....	13, 37, 63	PTNM350JO.....	15	PTNM363B.....	13, 37, 63	PTNM385.....	35, 61
PTNM332.....	11, 35, 61	PTNM351JO.....	15	PTNM364.....	13, 37, 63	PTNM385JO.....	11
PTNM340.....	15, 39, 65	PTNM352.....	15	PTNM365A.....	37, 63	PTNM389.....	13, 37, 63
PTNM341.....	17, 67	PTNM355.....	15	PTNM365AJC.....	13	PTNM390.....	13, 37, 63
PTNM342.....	15, 39, 65	PTNM356.....	13, 37, 63	PTNM365B.....	37, 63	PTNM390SS.....	13, 37, 63
PTNM343.....	15, 39, 65	PTNM357.....	13	PTNM365BJC.....	13	PTNM391.....	13
PTNM344.....	11, 35, 61	PTNM3572.....	37, 63	PTNM366.....	13, 37, 63	PTNM392C.....	11
PTNM345.....	11, 35, 61	PTNM358.....	13, 37, 63	PTNM367.....	13, 37, 63	PTNM393.....	13, 37, 63
PTNM348.....	37, 63	PTNM359.....	13, 37, 63	PTNM369.....	11	PTNM394.....	13, 37, 63



3121743



An Oshkosh Corporation Company

**Corporate Office**  
**JLG Industries, Inc.**  
**1 JLG Drive**  
**McConnellsburg, PA 17233-9533 USA**  
☎ **(717) 485-5161 (Corporate)**  
☎ **(877) 554-5438 (Customer Support)**  
☎ **(717) 485-6417**

**Visit our website for JLG Worldwide Locations.**  
**[www.jlg.com](http://www.jlg.com)**