



Illustrated Parts Manual

Models Ecolift70

P/N

31222432

April 1, 2023 - Rev A

ANSI

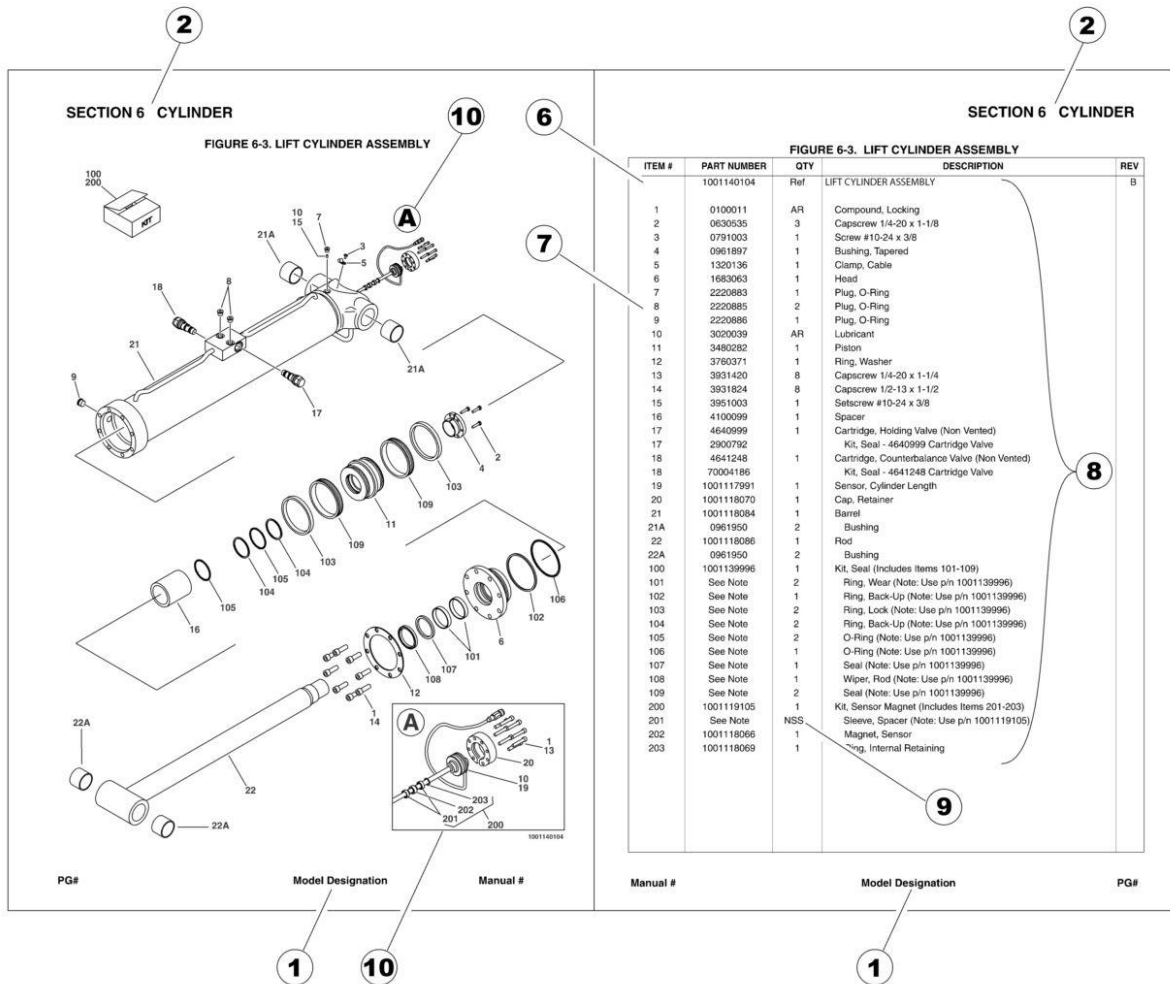


An Oshkosh Corporation Company

REVISION LOG

April 1, 2023 - A - Original Issue of Manual (Edited to 1001252002 Revision H)

GENERAL INFORMATION



1) MACHINE IDENTIFICATION

Machines are identified by model and in some cases a combination of models, serial number (SN) or regional standard (i.e ANSI, CE, CSA). Components may also be identified by SN or manufacturer. Common components that may be identified by these characteristics are engines and hydraulic components.

2) PARTS MANUAL ORGANIZATION

Product information in this manual is organized under section titles. Frame, Cylinder, Hydraulic and Electrical are a few examples. Each section is organized by figure and page number. The information within the Figure is then organized by item number, part number, description and corresponding illustration (s).

3) TABLE OF CONTENTS (NOT SHOWN)

A table of contents is found toward the beginning of the manual. Figure number, description and page number are provided for quick reference to the page containing the related information.

4) RECOMMENDED SPARE PARTS (NOT SHOWN)

The Recommended Spare Parts List, located near the end of the manual, reference most frequently used maintenance parts.

5) PART NUMBER INDEX (NOT SHOWN)

A numerical index listing all part numbers and the corresponding page number(s) appears at the back of the manual.

GENERAL INFORMATION

6) NON-SERVICED PARTS

In some instances, it is necessary to display non-serviced parts, assemblies or installations. In the case of assemblies and installations there will be a Ref in the Qty. column. In case of parts that are not available for service within assemblies or components, there will be a NSS (Not Sold Separately) or NLA (No Longer Available) listed in the Qty. column of the manual.

7) PARTS LIST ITEM NUMBERS

Numbers shown in the item# column correspond to numbers used in the associated illustration (s). Item numbers which are missing from the sequence in the parts list are not used on that page.

8) INDENTED PARTS DESCRIPTION

An indented part description is included in the item under which it is indented.

9) ABBREVIATION AND SYMBOLS

AC.....	Alternating Current	L.....	Liter
ADE.....	Advanced Design Electronics	LB(LBS).....	Pounds
AG.....	Agricultural	LCD.....	Liquid Crystal Display
ANSI.....	American National Standards Institute	LED.....	Light Emitting Diodes
AR.....	As Required	LH.....	Left Hand
ASSY.....	Assembly	LRC.....	Low Rated Countries
AUS.....	Australia	LSS.....	Load Sensing System
AUX.....	Auxiliary	M(m).....	Metric/Meter
AWG.....	American Wire Gauge	MM(mm).....	Milimeter
B/M.....	Bill of Material	mA.....	Miliamps
CAC.....	Charge Air Cooler	NLA.....	No Longer Available
CE.....	European Conformity	NPT.....	National Pipe Threads
CCW.....	Counter Clockwise	NSS.....	Not Sold Separately
CM.....	Centimeter	OD.....	Outside Diameter
CW.....	Clockwise	ORB.....	O-Ring Boss
CSA.....	Canadian Standards Association	ORFS.....	O-Ring Face Seal
CYL.....	Cylinder	OZ (oz).....	Ounces
DIA.....	Diameter	PG.....	Page
DC.....	Direct Current	PN.....	Part Number
DEF.....	Diesel Exhaust Fluid	QT(qt.).....	Quarts
EMS.....	Emergency Stop	QTY.....	Quantity
ENG.....	Engine	REF.....	Reference
FT(ft).....	Feet	REV.....	Revision Level
GA(Ga).....	Gauge	RH.....	Right Hand
HRC.....	High Rated Countries	SAE.....	Society of Automotive Engineers
HVAC.....	Heating, Ventilating, and Air Conditioning	SN.....	Serial Number
HYD.....	Hydraulic	SPEC(S).....	Specifications
Hz.....	Hertz	T/T.....	Turntable
ID.....	Inside Diameter	UGM.....	Universal Ground Module
IN.....	inches	V.....	Volts
ISO.....	International Organization for Standards	W.....	Watts
JIC.....	Joint Industry Council	#.....	Number
KG.....	Kilogram		

10) ILLUSTRATION REFERENCE LETTERS

When necessary, illustrations may contain reference letters that are intended to track information (i. e. hoses, harnesses) from one point to another or to track visual enlargement of components to show details that may be located in another area on the illustration.

Note: Due to continuous product improvements, JLG Industries, Inc. reserves the right to make specification changes without prior notification. Contact JLG Industries, Inc. for updated information.

TABLE OF CONTENTS

SECTION 1 - ECOLIFT 70 PRIOR TO SN -P900004871	9
FIGURE 1-1. FRAME INSTALLATION	10
FIGURE 1-2. MAST INSTALLATION.....	14
FIGURE 1-3. LIFT ASSEMBLY INSTALLATION	18
FIGURE 1-4. PLATFORM INSTALLATION 1OF2	22
FIGURE 1-5. PLATFORM INSTALLATION 2OF2	24
FIGURE 1-6. DECAL INSTALLATION (ANSI SPECS).....	26
FIGURE 1-7. DECAL INSTALLATION (CSA SPECS).....	28
FIGURE 1-8. DECAL INSTALLATION (BRAZIL SPECS).....	30
FIGURE 1-9. DECAL INSTALLATION (LATIN AMERICAN SPECS)	32
FIGURE 1-10. RECOMMENDED SERVICE PARTS STOCK	34
FIGURE 1-11. SPECIAL OPTIONS/ACCESSORIES/KITS	36
SECTION 2 - ECOLIFT 70 SN P900004871-P900018974 (EXCLUDING P900016888, P900016889, P900018150,P900018179,P900018237)	37
FIGURE 2-1. FRAME INSTALLATION	38
FIGURE 2-2. MAST INSTALLATION.....	42
FIGURE 2-3. LIFT ASSEMBLY INSTALLATION	46
FIGURE 2-4. PLATFORM INSTALLATION 1OF2	50
FIGURE 2-5. PLATFORM INSTALLATION 2OF2	52
FIGURE 2-6. STOCK PICKER TRAY INSTALLATION	54
FIGURE 2-7. DECALS INSTALLATION (ANSI SPECS)	56
FIGURE 2-8. DECALS INSTALLATION (BRAZIL SPECS)	58
FIGURE 2-9. DECALS INSTALLATION (CSA SPECS)	60
FIGURE 2-10. DECALS INSTALLATION (LATIN AMERICAN SPECS).....	62
FIGURE 2-11. RECOMMENDED SERVICE PARTS STOCK	64
FIGURE 2-12. SPECIAL OPTIONS/ACCESSORIES/KITS	66
SECTION 3 - ECOLIFT 70 SN P900018975 TO PRESENT (INCLUDING P900016888, P900016889, P900018150,P900018179,P900018237)	67
FIGURE 3-1. FRAME INSTALLATION	68
FIGURE 3-2. MAST INSTALLATION.....	72
FIGURE 3-3. LIFT ASSEMBLY INSTALLATION	76
FIGURE 3-4. PLATFORM INSTALLATION	80
FIGURE 3-5. STOCK PICKER TRAY INSTALLATION	82
FIGURE 3-6. DECALS INSTALLATION (ANSI SPECS)	84
FIGURE 3-7. DECALS INSTALLATION (ANSI SPECS)	86
FIGURE 3-8. DECALS INSTALLATION (BRAZIL SPECS)	88
FIGURE 3-9. DECALS INSTALLATION (CSA SPECS)	90
FIGURE 3-10. DECALS INSTALLATION (LATIN AMERICAN SPECS).....	92
FIGURE 3-11. RECOMMENDED SERVICE PARTS STOCK	94
FIGURE 3-12. SPECIAL OPTIONS/ACCESSORIES/KITS	96
PART NUMBER INDEX	97

SECTION 1 - ECOLIFT 70 PRIOR TO SN -P900004871

SECTION 1 - ECOLIFT 70 PRIOR TO SN -P900004871

SECTION 1 - ECOLIFT 70 PRIOR TO SN -P900004871

FIGURE 1-1. FRAME INSTALLATION

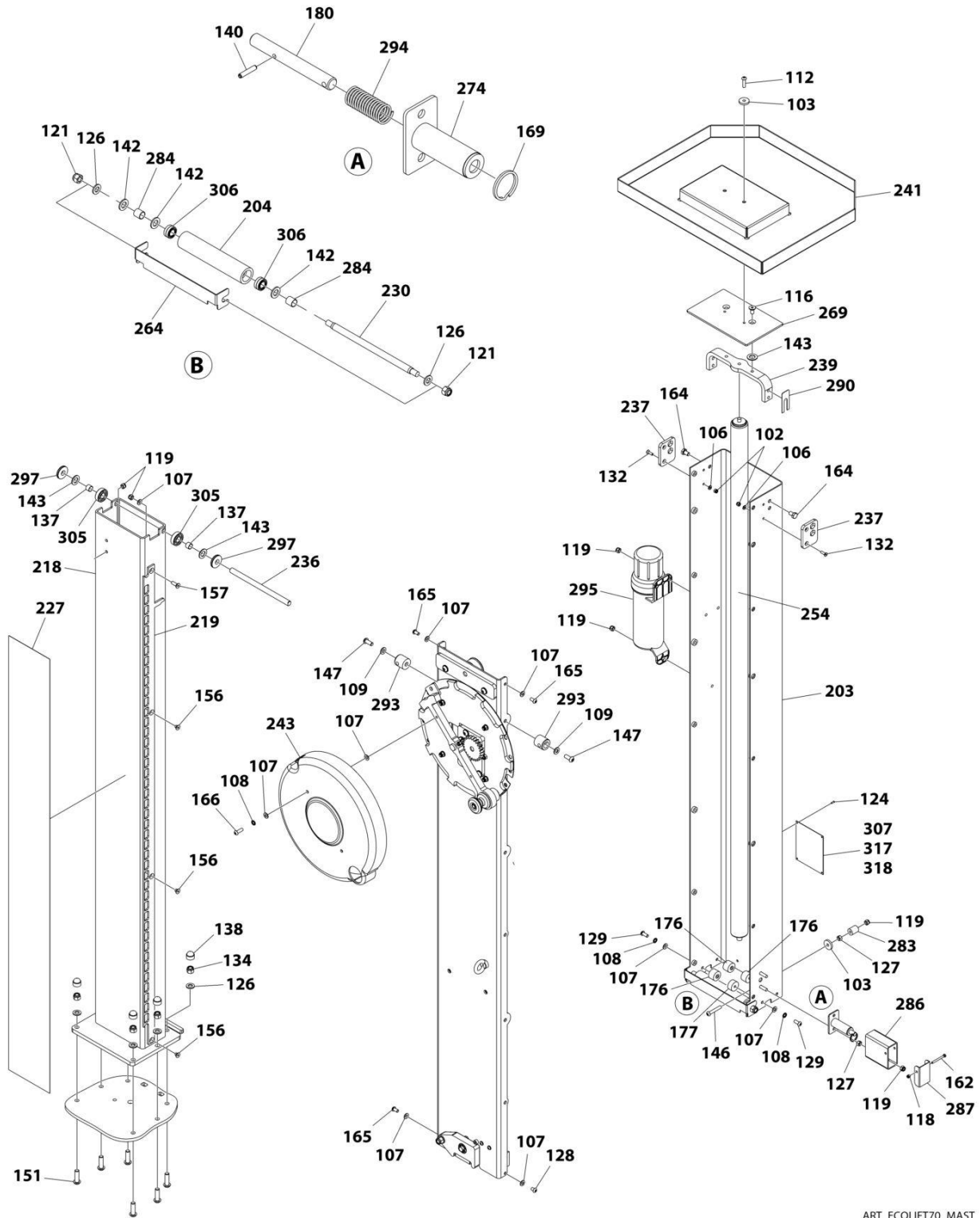
ITEM	PART NUMBER	QTY	DESCRIPTION	REV
101	1001264556	3	Bolt M6 x 35	
102	1001264557	7	Nut M6	
106	1001265112	9	Washer M6	
107	1001265113	11	Washer M8	
109	1001265115	2	Washer M10	
110	1001265116	1	Washer M10	
112	1001265121	1	Bolt M8 x 30	
114	1001265124	1	Bolt M5 x 12	
115	1001265127	1	Bolt M6 x 20	
117	1001265133	1	Nut M4	
118	1001265134	1	Nut M5	
119	1001265135	7	Nut M8	
120	1001265136	1	Nut M10	
122	1001265139	1	Nut M16	
123	1001265147	1	Nut 3/4	
125	1001265461	4	Washer M6	
126	1001265462	3	Washer M12	
130	1001265508	1	Bolt M10 x 30	
131	1001265512	2	Bolt M6 x 30	
133	1001265642	1	Cable, Earthing	
134	1001265746	2	Nut M12	
135	1001265750	2	Washer M29	
136	1001265991	1	Washer M20	
139	1001266105	2	Circlip	
141	1001266108	1	Cotterpin	
144	1001266112	2	Bolt M6 x 25	
145	1001266113	3	Bolt M8 x 25	
146	1001266114	1	Bolt M8 x 50	
152	1001266122	1	Bolt M4 x 20	
160	1001266131	2	Bolt M8 x 45	
172	1001266244	1	Plate, Brake Cam	
174	1001266246	1	Disc, Brake	
175	1001266247	1	Plate, Brake Cam	
189	1001266412	4	Bolt 8 x 1-1/2	
192	1001266415	2	Bolt M3 x 12	
194	1001266417	1	Bolt M12 x 45	
195	1001266418	2	Bolt M4 x 16	
198	1001266421	2	Nut M3	
199	1001266422	1	Spacer	
201	1001266424	1	Bushing	
202	1001266425	1	Bushing	
205	1001266428	1	Finger, Easy Release	
206	1001266429	1	Spacer	
207	1001266430	1	Cradle, Finger Handle	
208	1001266431	1	Handle, Emergency Lowering Tool	
209	1001266433	1	Handle, Finger Head	
213	1001266438	1	Spring	
215	1001266614	1	Bushing	
216	1001267378	1	Emergency Lowering Tool (Includes Items 101, 102, 106, 115, 195, 205-209, 213)	

SECTION 1 - ECOLIFT 70 PRIOR TO SN -P900004871

ITEM	PART NUMBER	QTY	DESCRIPTION	REV
220	1001267384	1	Block, Step	
224	ECLM414	2	Clip	
231	ECLM420	1	Guard, Hub	
233	ECLM422	1	Spacer	
234	ECLM423	1	Axle	
240	ECLM600	1	Wheel	
242	ECLM602	1	Cover, Chassis	
244	ECLM604	1	Buffer, Side	
245	ECLM605	1	Buffer, Step	
246	ECLM606	1	Pin, Brake	
247	ECLM608	1	Buffer, Rear	
249	ECLM610	1	Fixing Strip, Step Buffer	
250	ECLM611	1	Buffer, Corner	
253	ECLM614	1	Brush	
259	ECLM621	1	Fixing Strip, Side Buffer	
260	ECLM622	1	Fixing Strip, Rear Buffer	
263	ECLM701	1	Step	
273	PELM414	1	Spring, Brake	
277	PELM451	1	Level, Spirit	
300	PTM102	1	Castor - Swivel	
301	PTM1022	1	Castor - Swivel	
303	PTM163	2	Cap, Chassis Insert	

SECTION 1 - ECOLIFT 70 PRIOR TO SN -P900004871

FIGURE 1-2. MAST INSTALLATION



ART_ECOLIFT70_MAST

SECTION 1 - ECOLIFT 70 PRIOR TO SN -P900004871

FIGURE 1-2. MAST INSTALLATION

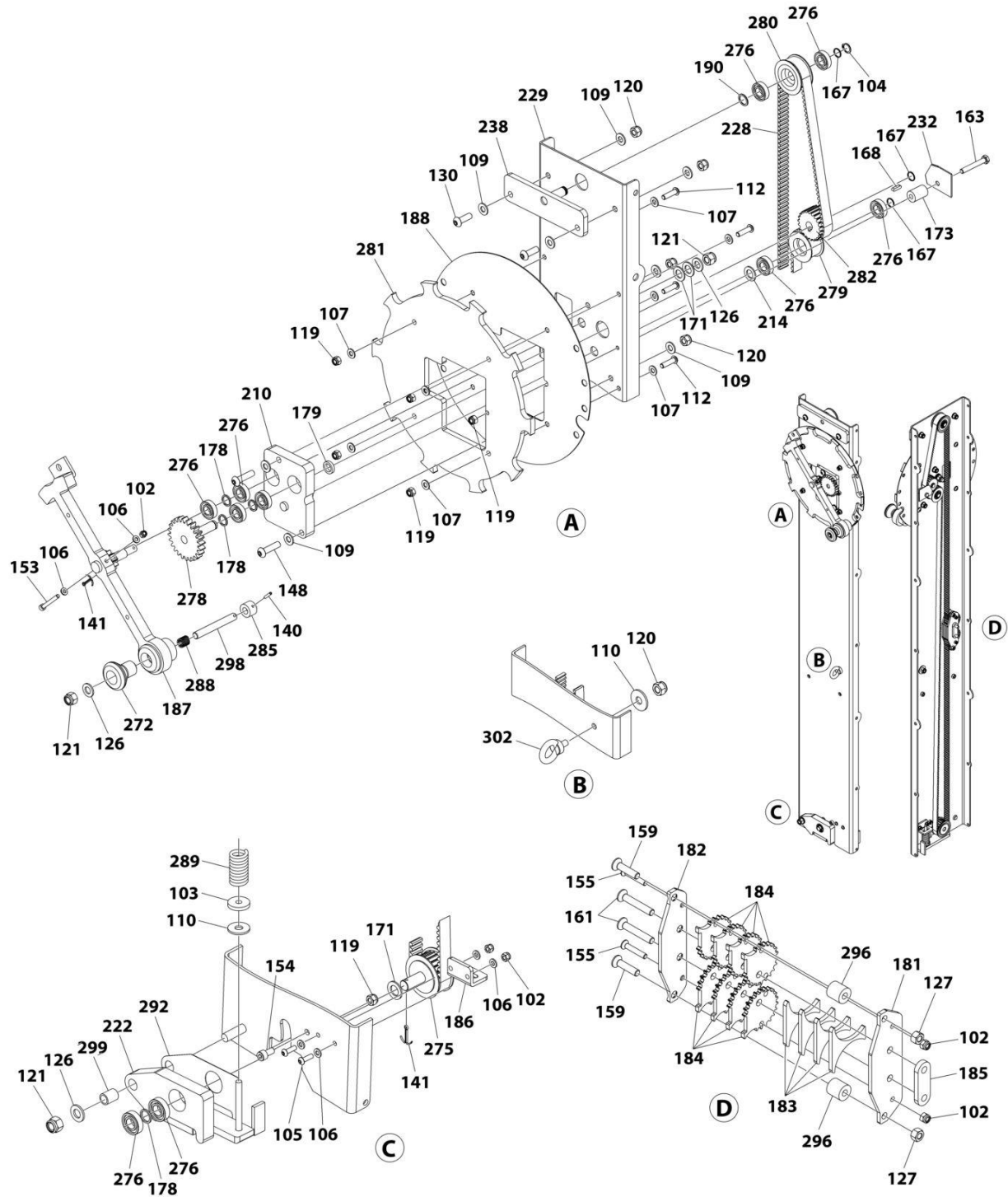
ITEM	PART NUMBER	QTY	DESCRIPTION	REV
102	1001264557	2	Nut M6	
103	1001264558	2	Washer M8	
106	1001265112	2	Washer M6	
107	1001265113	9	Washer M8	
108	1001265114	3	Washer M8	
109	1001265115	2	Washer M10	
112	1001265121	1	Bolt M8 x 30	
116	1001265131	1	Bolt M10 x 20	
118	1001265134	1	Nut M5	
119	1001265135	6	Nut M8	
121	1001265138	2	Nut M12	
124	1001265149	1	Rivet	
126	1001265462	6	Washer M12	
127	1001265496	2	Nut M8	
128	1001265506	1	Bolt M8 x 12	
129	1001265507	2	Bolt M8 x 20	
132	1001265514	2	Bolt M6 x 25	
134	1001265746	4	Nut M12	
137	1001266100	2	Bushing	
138	1001266101	4	Nut M12	
140	1001266107	1	Pin, Spring	
142	1001266109	3	Washer M14	
143	1001266110	3	Washer M16	
146	1001266114	1	Bolt M8 x 50	
147	1001266115	2	Bolt M10 x 25	
151	1001266121	6	Bolt M12 x 40	
156	1001266127	3	Bolt M8 x 10	
157	1001266128	1	Bolt M8 x 25	
162	1001266137	1	Bolt M5 x 50	
164	1001266139	2	Bolt M10 x 16	
165	1001266144	3	Bolt M8 x 16	
166	1001266145	1	Bolt M8 x 25	
169	1001266211	1	Ring, Interlock Pin	
176	1001266254	3	Wear Disc	
177	1001266255	1	Wear Disc	
180	1001266259	1	Pin, Interlock	
203	1001266426	1	Mast, Outer	
204	1001266427	1	Roller, Outer Mast	
218	1001267382	1	Mast, Inner	
219	1001267383	1	Interlock Strip, Mast	
227	ECLM416	1	Strip, Wear	
230	ECLM419	1	Axle, Roller	
236	ECLM426	1	Axle, Wheel	
237	ECLM428	2	Plate, Lock	
239	ECLM434	1	Mounting, Gas Strut	
241	ECLM601	1	Tray, Tool	
243	ECLM603	1	Cover, Handle	
254	ECLM615	1	Strut	
264	ECLM702	1	Cover, Roller	
269	ECLM708	1	Cap, Mast	

SECTION 1 - ECOLIFT 70 PRIOR TO SN -P900004871

ITEM	PART NUMBER	QTY	DESCRIPTION	REV
274	PELM421	1	Housing, Interlock	
283	PELM475	1	Reel	
284	PELM478	2	Spacer	
286	PELM481	1	Cover, Interlock Housing	
287	PELM482	1	Cap, Interlock Housing	
290	PELM485	1	Spacer	
293	PELM489	2	Peg, Cage Mounting	
294	PELM494	1	Spring	
295	PELM495	1	Canister, Document	
297	PELM498	2	Roller, Corner	
305	PTNSPM562	2	Bearing, Roller	
306	PTNSPM664	2	Bearing, Needle Roller	
307	See Note	NSS	Nameplate - Manufacturers Serial Number (Note: Not Available for Purchase)	
317	See Note	NSS	Nameplate - Manufacturers Serial Number (Note: Not Available for Purchase)	
318	See Note	NSS	Nameplate - Manufacturers Serial Number (Note: Not Available for Purchase)	

SECTION 1 - ECOLIFT 70 PRIOR TO SN -P900004871

FIGURE 1-3. LIFT ASSEMBLY INSTALLATION



ART_ECOLIFT70_LIFT ASSEMBLY

SECTION 1 - ECOLIFT 70 PRIOR TO SN -P900004871

FIGURE 1-3. LIFT ASSEMBLY INSTALLATION

ITEM	PART NUMBER	QTY	DESCRIPTION	REV
102	1001264557	5	Nut M6	
103	1001264558	1	Washer M8	
104	1001264559	1	Circlip	
105	1001264707	2	Bolt M6 x 20	
106	1001265112	6	Washer M6	
107	1001265113	8	Washer M8	
109	1001265115	8	Washer M10	
110	1001265116	2	Washer M10	
112	1001265121	4	Bolt M8 x 30	
119	1001265135	6	Nut M8	
120	1001265136	5	Nut M10	
121	1001265138	3	Nut M12	
126	1001265462	3	Washer M12	
127	1001265496	2	Nut M8	
130	1001265508	2	Bolt M10 x 30	
140	1001266107	1	Pin, Spring	
141	1001266108	2	Cotterpin	
148	1001266117	2	Bolt M10 x 40	
153	1001266123	1	Bolt M6 x 50	
154	1001266124	1	Bolt M8 x 16	
155	1001266126	2	Bolt M6 x 35	
159	1001266130	2	Bolt M8 x 35	
161	1001266132	2	Bolt M8 x 50	
163	1001266138	1	Bolt M8 x 55	
167	1001266146	3	Ring, Spring	
168	1001266210	1	Key, Pulley	
171	1001266219	3	Washer, Plastic	
173	1001266245	1	Guide, Reel	
178	1001266257	4	Spacer	
179	1001266258	1	Spacer	
181	1001266260	1	Plate, Belt Clamp Base	
182	1001266261	1	Plate, Belt Clamp Top	
183	1001266262	4	Plate, Belt Clamp Middle	
184	1001266264	8	Cog, Belt Clamp	
185	1001266265	1	Spacer, Belt Clamp	
186	1001266273	1	Mount, Interlock Spring	
187	1001266274	1	Handle	
188	1001266275	1	Cover, Lock Plate Rear	
190	1001266413	1	Bolt M17 x 22-1/2	
210	1001266434	1	Block, Drive Bearing	
214	1001266439	1	Washer	
222	ECLM412	1	Plate, Lower Tensioner	
228	ECLM417	1	Belt	
229	ECLM418	1	Panel, Front Pulley	
232	ECLM421	1	Washer, Drive Belt	
238	ECLM431	1	Mount, Free Wheel Pulley	
272	PELM412	1	Knob, Handle	
275	PELM429	1	Pulley, Lower	
276	PELM442	10	Bearing, Pulley	
278	PELM462	1	Gear, Drive	

SECTION 1 - ECOLIFT 70 PRIOR TO SN -P900004871

ITEM	PART NUMBER	QTY	DESCRIPTION	REV
279	PELM467	1	Pulley, Guide	
280	PELM469	1	Pulley, Free Wheel	
281	PELM471	1	Plate, Lock	
282	PELM472	1	Pulley, Drive	
285	PELM480	1	Tip, Lock Pin	
288	PELM483	1	Spring, Handle	
289	PELM484	1	Spring, Belt	
292	PELM488	1	Plate, Lower Pulley Tensioner	
296	PELM496	2	Reel, Clamp	
298	PELM499	1	Pin, Lock	
299	PELM506	1	Bushing	
302	PTM149	1	Eye, Harness	

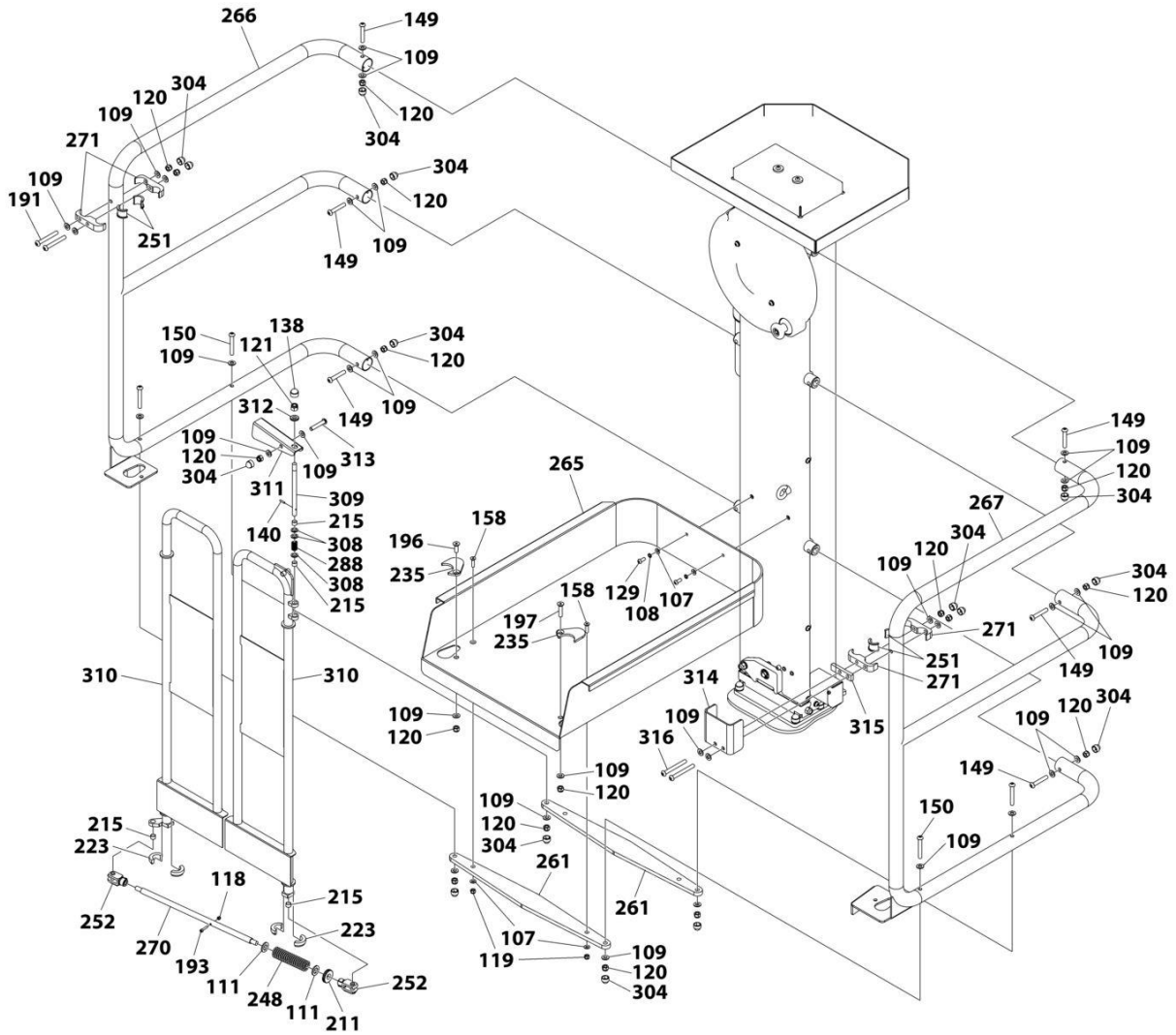
SECTION 1 - ECOLIFT 70 PRIOR TO SN -P900004871

FIGURE 1-4. PLATFORM INSTALLATION 1OF2

ITEM	PART NUMBER	QTY	DESCRIPTION	REV
107	1001265113	4	Washer M8	
108	1001265114	2	Washer M8	
109	1001265115	30	Washer M10	
111	1001265117	2	Washer M16	
118	1001265134	1	Nut M5	
119	1001265135	2	Nut M8	
120	1001265136	16	Nut M10	
129	1001265507	2	Bolt M8 x 20	
149	1001266119	6	Bolt M10 x 60	
150	1001266120	4	Bolt M10 x 70	
158	1001266129	2	Bolt M8 x 30	
191	1001266414	4	Bolt M10 x 80	
193	1001266416	1	Bolt M5 x 25	
196	1001266419	1	Bolt M10 x 30	
197	1001266420	1	Bolt M10 x 45	
211	1001266435	1	Spacer	
215	1001266614	2	Bushing	
223	ECLM413	2	Bushing	
235	ECLM425	1	Cover, Gate (Pair)	
248	ECLM609	1	Spring	
251	ECLM612	2	Bushing	
252	ECLM613	2	Clip, Clevis	
261	ECLM623	2	Strap, Platform Tray Support	
262	1001266137	2	Bolt M5 x 50	
265	ECLM704	1	Tray, Platform	
266	ECLM705	1	Guardrail - Left	
267	ECLM706	1	Guardrail - Right	
270	ECLM709	1	Rod, Gate Link	
271	ECLM710	4	Bracket, Hinge	
304	PTNSPM560	14	Nut M10	

SECTION 1 - ECOLIFT 70 PRIOR TO SN -P900004871

FIGURE 1-5. PLATFORM INSTALLATION 2OF2



ART_ECOLIFT70_PLATFORM_2OF2

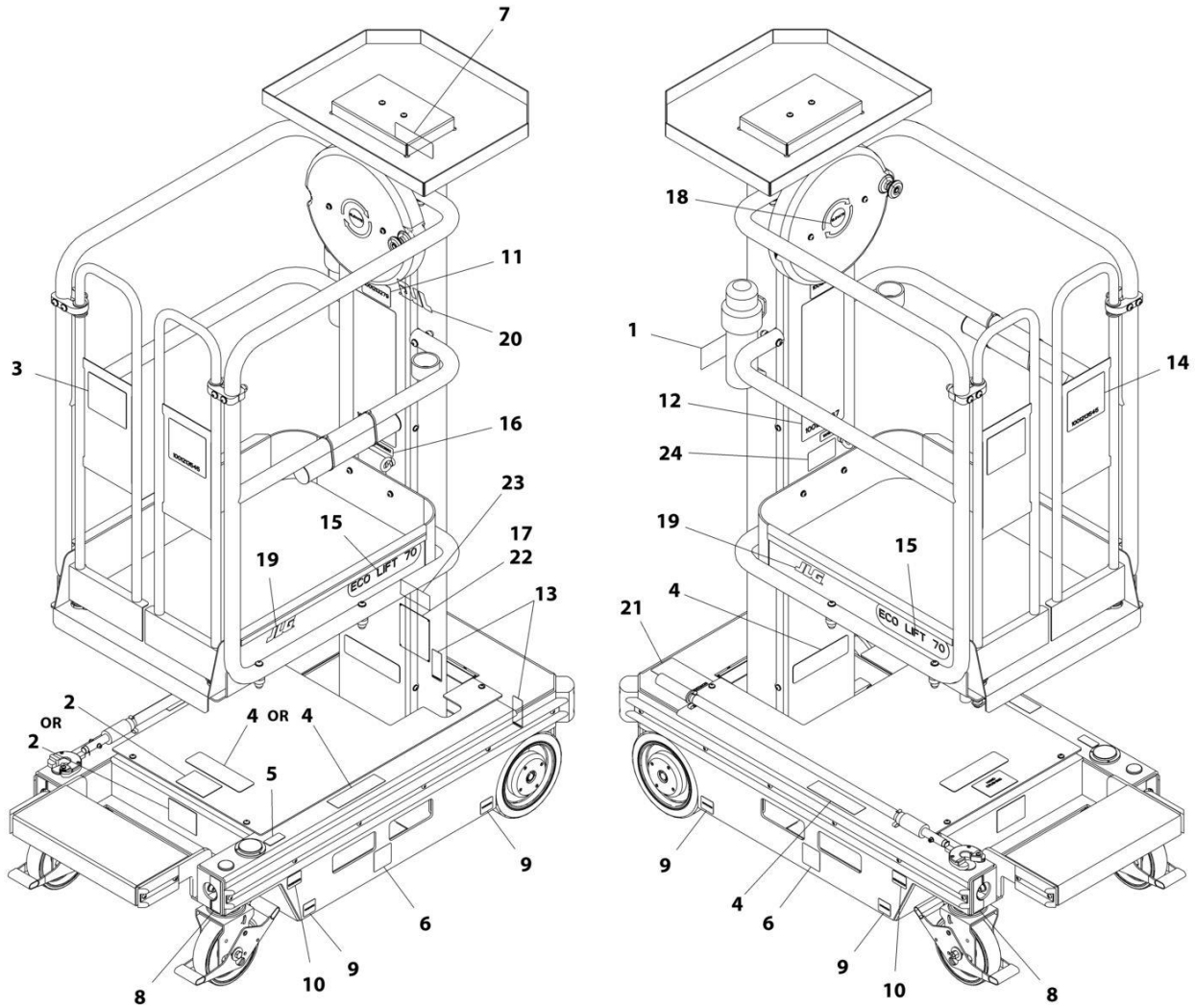
SECTION 1 - ECOLIFT 70 PRIOR TO SN -P900004871

FIGURE 1-5. PLATFORM INSTALLATION 2OF2

ITEM	PART NUMBER	QTY	DESCRIPTION	REV
107	1001265113	4	Washer M8	
108	1001265114	2	Washer M8	
109	1001265115	32	Washer M10	
111	1001265117	2	Washer M16	
118	1001265134	1	Nut M5	
119	1001265135	2	Nut M8	
120	1001265136	17	Nut M10	
121	1001265138	1	Nut M12	
129	1001265507	2	Bolt M8 x 20	
138	1001266101	1	Nut M12	
140	1001266107	1	Pin, Spring	
149	1001266119	6	Bolt M10 x 60	
150	1001266120	4	Bolt M10 x 70	
158	1001266129	2	Bolt M8 x 30	
191	1001266414	2	Bolt M10 x 80	
193	1001266416	1	Bolt M5 x 25	
196	1001266419	1	Bolt M10 x 30	
197	1001266420	1	Bolt M10 x 45	
211	1001266435	1	Spacer	
215	1001266614	4	Bushing	
223	ECLM413	2	Bushing	
235	ECLM425	1	Cover, Gate (Pair)	
248	ECLM609	1	Spring	
251	ECLM612	2	Bushing	
252	ECLM613	2	Clip, Clevis	
261	ECLM623	2	Strap, Platform Tray Support	
265	ECLM704	1	Tray, Platform	
266	ECLM705	1	Guardrail - Left	
267	ECLM706	1	Guardrail - Right	
270	ECLM709	1	Rod, Gate Link	
271	ECLM710	4	Bracket, Hinge	
288	PELM483	1	Spring, Handle	
304	PTNSPM560	15	Nut M10	
308	1001269639	3	Washer, Spring	
309	1001269642	1	Pin, Lock	
310	1001269641	2	Gate, Platform (locking Gate)	
311	1001269636	1	Handle, Gate Lock	
312	1001269638	1	Washer	
313	1001269694	1	Bolt M10 x 55	
314	1001269643	1	Guard, Gate Lock	
315	1001269644	1	Spacer	
316	1001269695	2	Bolt M10 x 90	

SECTION 1 - ECOLIFT 70 PRIOR TO SN -P900004871

FIGURE 1-6. DECAL INSTALLATION (ANSI SPECS)



ART_1001213185

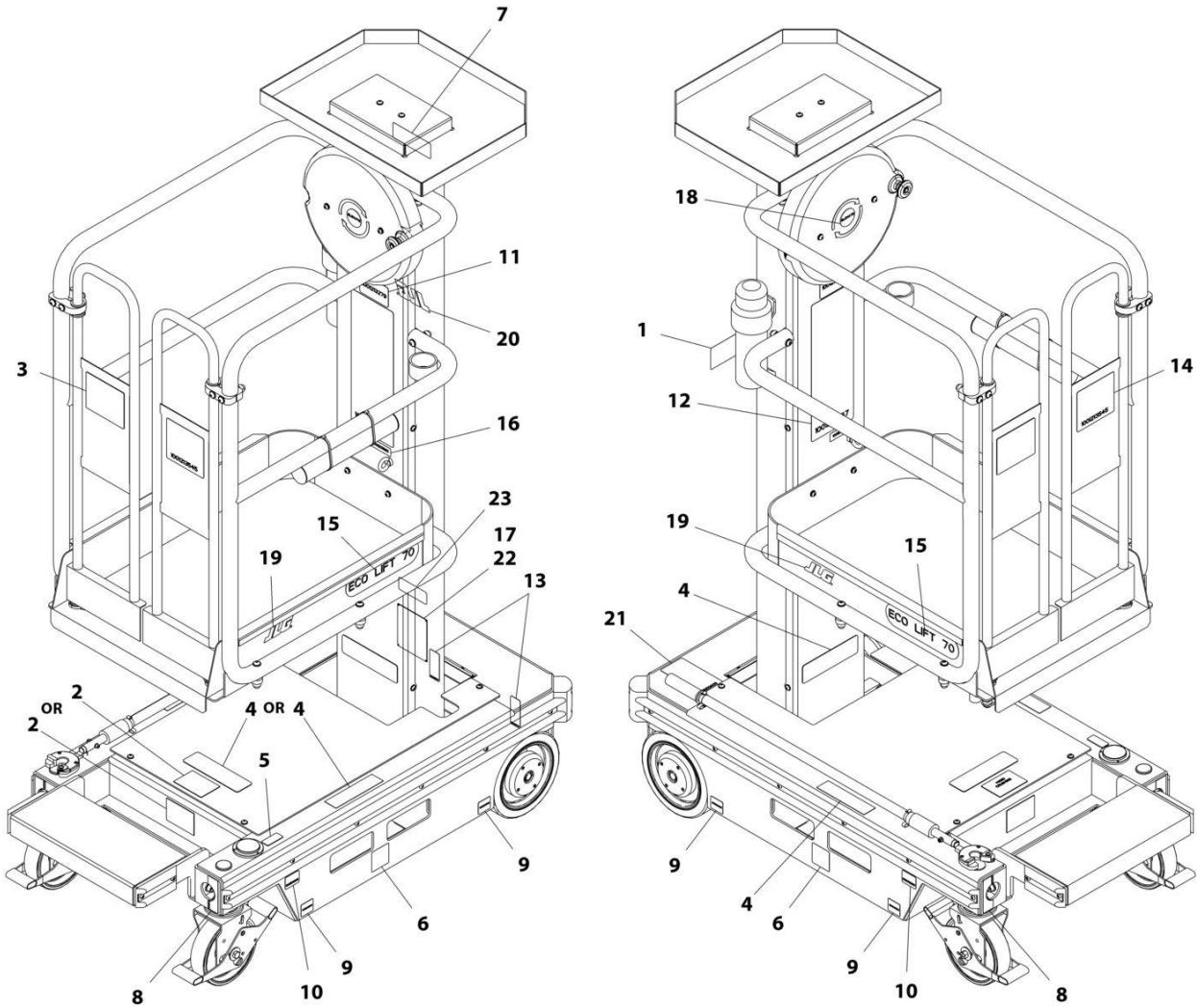
SECTION 1 - ECOLIFT 70 PRIOR TO SN -P900004871

FIGURE 1-6. DECAL INSTALLATION (ANSI SPECS)

ITEM	PART NUMBER	QTY	DESCRIPTION	REV
	1001213185	Ref	DECAL INSTALLATION (ENGLISH)	E
1	1701509	1	Decal - Manual	
2	1702391	1	Decal - Hand Crushing	
3	1703781	1	Decal - Electrical Hazard	
4	1703786	3	Decal - Crushing Hazard	
5	1703789	1	Decal - Level Indicator	
6	1703817	2	Decal - Fork Lift	
7	1001215043	1	Decal - Warning Label	
8	1001213202	1	Decal - Tie Down/Lift	
9	1001213205	4	Decal - Wheel Load	
10	1001213208	2	Decal - Caster Lock	
11	1001213279	1	Decal - Capacity	
12	1001213367	1	Decal - Warning	
13	1001213442	2	Decal - Tie Down/Lift	
14	1001213545	1	Decal - Crushing Tipping	
15	1001213549	2	Decal - Ecolift 50	
16	1001213582	1	Decal - Lanyard Attach Graphic	
17	See Note	NSS	Nameplate - Manufacturers Serial Number (Note: Not Available for Purchase)	
18	1001213997	1	Decal - Elevate Crank	
19	1001214108	2	Decal - JLG	
20	1001214109	1	Decal - JLG	
21	1001214125	1	Decal - Manual Descent	
22	3820001	4	Rivet	
23	1706351	1	Decal - CSA	
24	1001231801	1	Decal - Warning Prop 65 (SN P900003502 through P900004840)	

SECTION 1 - ECOLIFT 70 PRIOR TO SN -P900004871

FIGURE 1-7. DECAL INSTALLATION (CSA SPECS)



ART_1001215012

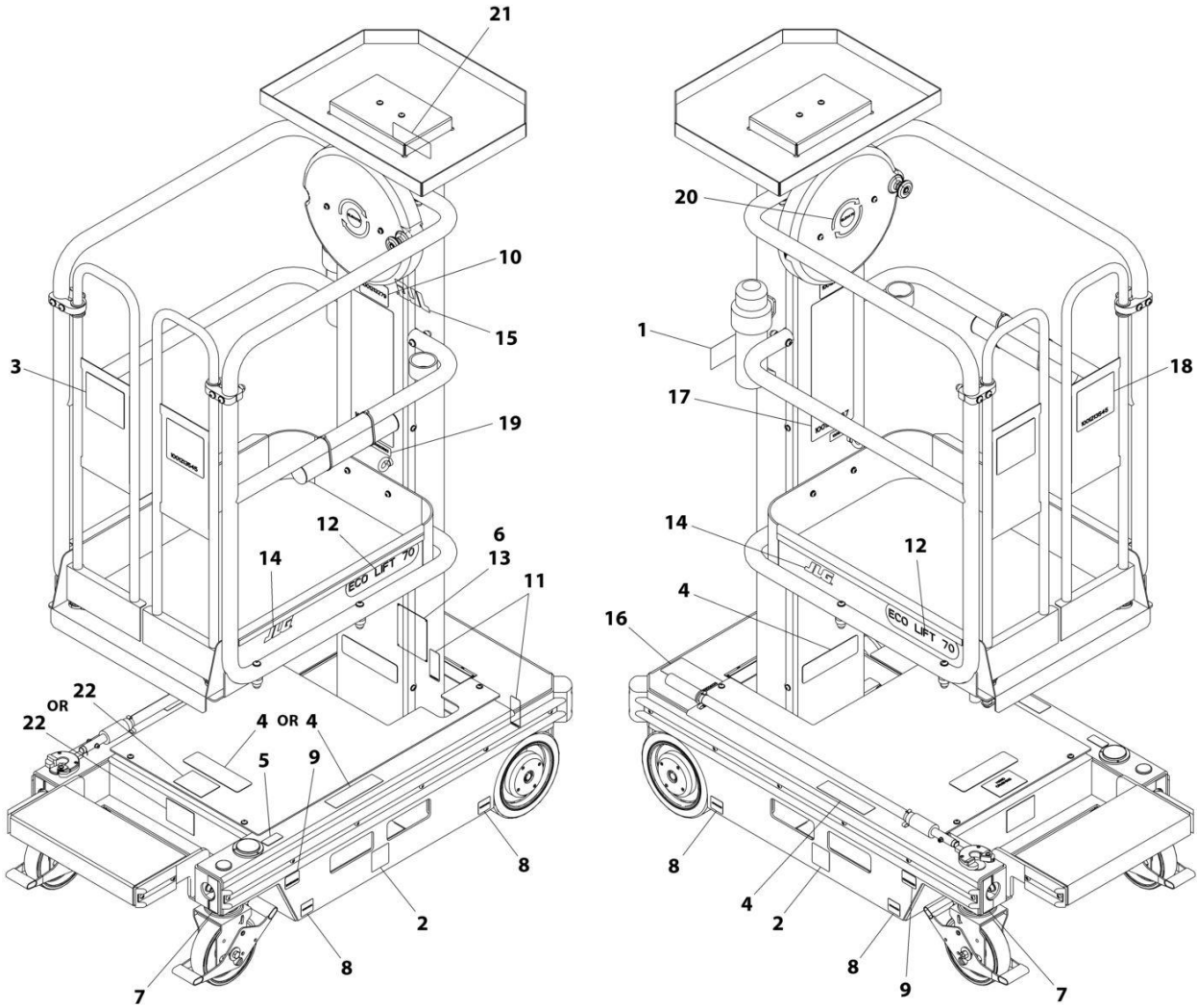
SECTION 1 - ECOLIFT 70 PRIOR TO SN -P900004871

FIGURE 1-7. DECAL INSTALLATION (CSA SPECS)

ITEM	PART NUMBER	QTY	DESCRIPTION	REV
	1001215012	Ref	DECAL INSTALLATION (FRENCH/ENGLISH)	B
1	1701509	1	Decal - Manual	
2	1001215113	1	Decal - Hand Crushing	
3	1704795	1	Decal - Electrical Hazard	
4	1704039	3	Decal - Crushing Hazard	
5	1704041	1	Decal - Level Indicator	
6	1703817	2	Decal - Fork Lift	
7	1001215049	1	Decal - Warning Label	
8	1001213202	1	Decal - Tie Down/Lift	
9	1001213205	4	Decal - Wheel Load	
10	1001213208	2	Decal - Caster Lock	
11	1001213279	1	Decal - Capacity	
12	1001215007	1	Decal - Warning	
13	1001213442	2	Decal - Tie Down/Lift	
14	1001215010	1	Decal - Crushing Tipping	
15	1001213549	2	Decal - Ecolift 70	
16	1001215009	1	Decal - Lanyard Attach Graphic	
17	See Note	NSS	Nameplate - Manufacturers Serial Number (Note: Not Available for Purchase)	
18	1001215005	1	Decal - Elevate Crank	
19	1001214108	2	Decal - JLG	
20	1001214109	1	Decal - JLG	
21	1001214125	1	Decal - Manual Descent	
22	3820001	4	Rivet	
23	1706351	1	Decal - CSA	

SECTION 1 - ECOLIFT 70 PRIOR TO SN -P900004871

FIGURE 1-8. DECAL INSTALLATION (BRAZIL SPECS)



ART_1001241787

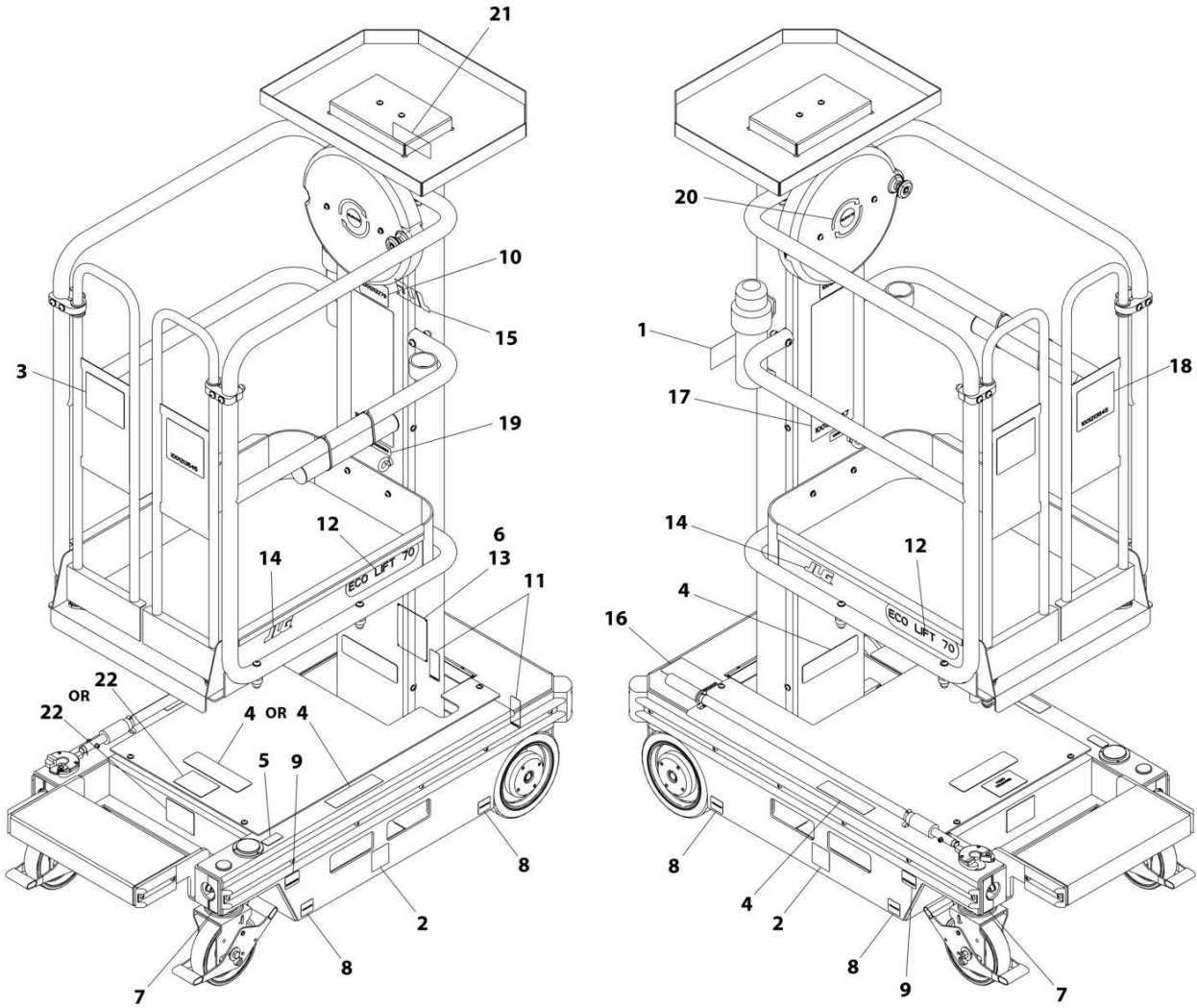
SECTION 1 - ECOLIFT 70 PRIOR TO SN -P900004871

FIGURE 1-8. DECAL INSTALLATION (BRAZIL SPECS)

ITEM	PART NUMBER	QTY	DESCRIPTION	REV
	1001241787	Ref	DECAL INSTALLATION (PORTUGUESE/SPANISH)	B
1	1701509	1	Decal - Manual	
2	1703817	2	Decal - Fork Lift	
3	1704021	1	Decal - Electrical Hazard	
4	1704024	3	Decal - Crushing Hazard	
5	1704026	1	Decal - Level Indicator	
6	3820001	4	Rivet	
7	1001213202	1	Decal - Tie Down/Lift	
8	1001213205	4	Decal - Wheel Load	
9	1001213208	2	Decal - Caster Lock	
10	1001213279	1	Decal - Capacity	
11	1001213442	2	Decal - Tie Down/Lift	
12	1001213549	2	Decal - Ecolift 70	
13	See Note	NSS	Nameplate - Manufacturers Serial Number (Note: Not Available for Purchase)	
14	1001214108	2	Decal - JLG	
15	1001214109	1	Decal - JLG	
16	1001214125	1	Decal - Manual Descent	
17	1001241800	1	Decal - Warning	
18	1001241801	1	Decal - Crushing Tipping	
19	1001241802	1	Decal - Lanyard Attach Graphic	
20	1001241803	1	Decal - Elevate Crank	
21	1001241804	1	Decal - Warning Label	
22	1001241805	1	Decal - Hand Crushing	

SECTION 1 - ECOLIFT 70 PRIOR TO SN -P900004871

FIGURE 1-9. DECAL INSTALLATION (LATIN AMERICAN SPECS)



ART_1001241785

SECTION 1 - ECOLIFT 70 PRIOR TO SN -P900004871

FIGURE 1-9. DECAL INSTALLATION (LATIN AMERICAN SPECS)

ITEM	PART NUMBER	QTY	DESCRIPTION	REV
	1001241785	Ref	DECAL INSTALLATION (SPANISH/ENGLISH)	B
1	1701509	1	Decal - Manual	
2	1703817	2	Decal - Fork Lift	
3	1704029	1	Decal - Electrical Hazard	
4	1704032	3	Decal - Crushing Hazard	
5	1704034	1	Decal - Level Indicator	
6	3820001	4	Rivet	
7	1001213202	1	Decal - Tie Down/Lift	
8	1001213205	4	Decal - Wheel Load	
9	1001213208	2	Decal - Caster Lock	
10	1001213279	1	Decal - Capacity	
11	1001213442	2	Decal - Tie Down/Lift	
12	1001213549	2	Decal - Ecolift 70	
13	See Note	NSS	Nameplate - Manufacturers Serial Number (Note: Not Available for Purchase)	
14	1001214108	2	Decal - JLG	
15	1001214109	1	Decal - JLG	
16	1001214125	1	Decal - Manual Descent	
17	1001241790	1	Decal - Warning	
18	1001241791	1	Decal - Crushing Tipping	
19	1001241792	1	Decal - Lanyard Attach Graphic	
20	1001241793	1	Decal - Elevate Crank	
21	1001241794	1	Decal - Warning Label	
22	1001241795	1	Decal - Hand Crushing	

SECTION 1 - ECOLIFT 70 PRIOR TO SN -P900004871

FIGURE 1-10. RECOMMENDED SERVICE PARTS STOCK

ITEM	PART NUMBER	QTY	DESCRIPTION	REV
		Ref	Note: The following list will service one machine (built to current production per date on the front cover) with emergency repair parts which can be installed in the field. Parts from the list should be replaced when inventory is depleted to keep service parts stock supplied. For further information, contact your JLG dealer or the JLG Industries Parts Department.	
	ECLM703	1	Emergency Lowering Tool	
	1001269636	1	Handle, Gate Lock (Platform with Locking Gate)	

SECTION 1 - ECOLIFT 70 PRIOR TO SN -P900004871

FIGURE 1-11. SPECIAL OPTIONS/ACCESSORIES/KITS

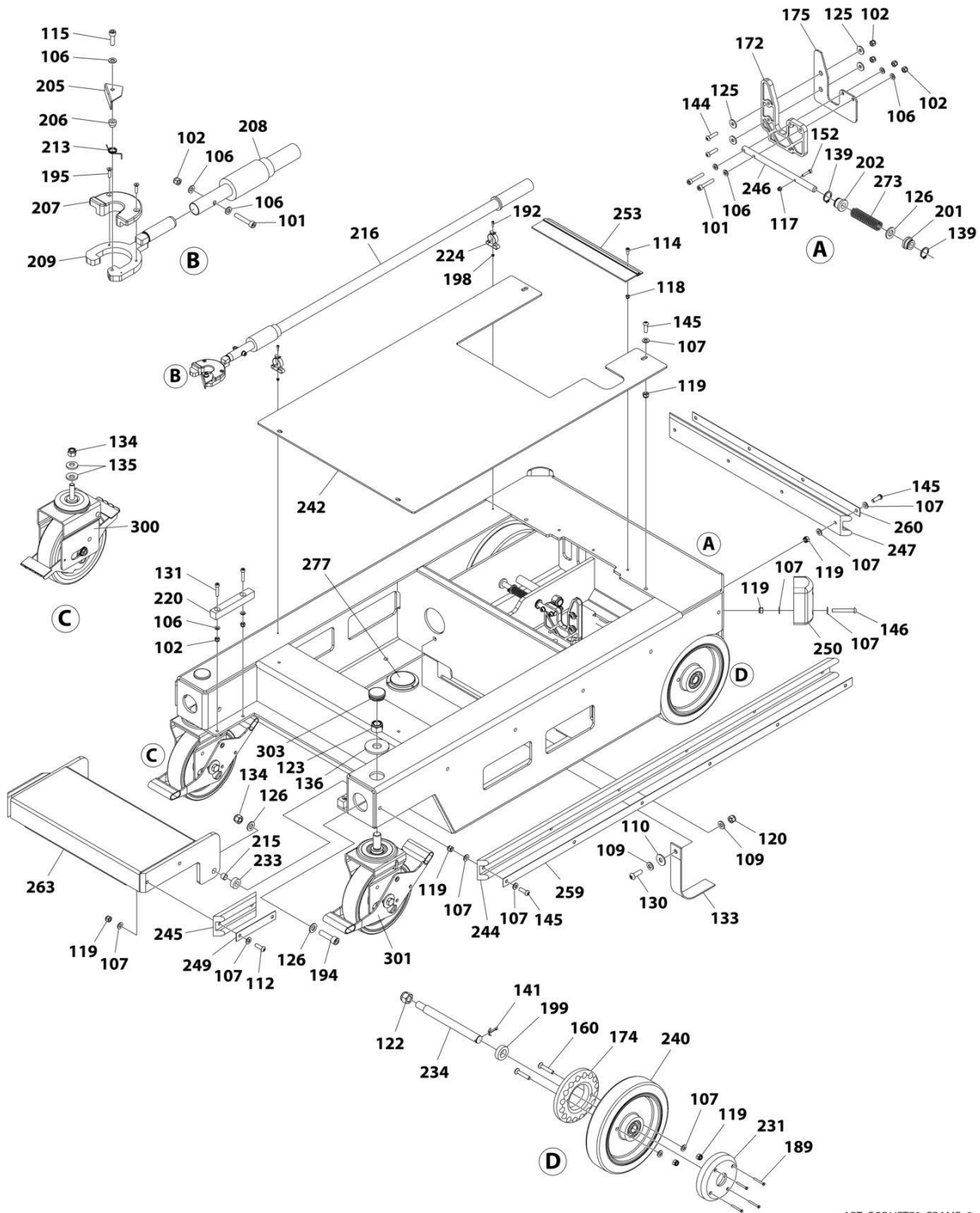
ITEM	PART NUMBER	QTY	DESCRIPTION	REV
		Ref	Note: This list is to accommodate machines ordered with special equipment. Options may not be applicable to all models. For more specific parts information contact JLG Parts Department.	
		Ref	MISCELLANEOUS SPECIAL OPTIONS	
	PELM500	Ref	Cylinder Pressurizing Kit (Includes Hose, Gauges, fittings & Flow Valve)	
	1001298295	Ref	Handle Tip Kit	
	1001256697	Ref	Service Kits & Tools (Prior to SN P900018962)	F
	1001249640	Ref	Static Strap Kit (SN P900018962 to Present)	
	1001302745	Ref	Static Strap Kit	

**SECTION 2 - ECOLIFT 70 SN P900004871-P900018974 (EXCLUDING
P900016888, P900016889, P900018150,P900018179,P900018237)**

**SECTION 2 - ECOLIFT 70 SN P900004871-P900018974 (EXCLUDING
P900016888, P900016889, P900018150,P900018179,P900018237)**

SECTION 2 - ECOLIFT 70 SN P900004871-P900018974 (EXCLUDING P900016888, P900016889, P900018150,P900018179,P900018237)

FIGURE 2-1. FRAME INSTALLATION



ART_ECOLIFT70_FRAME_2

**SECTION 2 - ECOLIFT 70 SN P900004871-P900018974 (EXCLUDING
P900016888, P900016889, P900018150, P900018179, P900018237)**

FIGURE 2-1. FRAME INSTALLATION

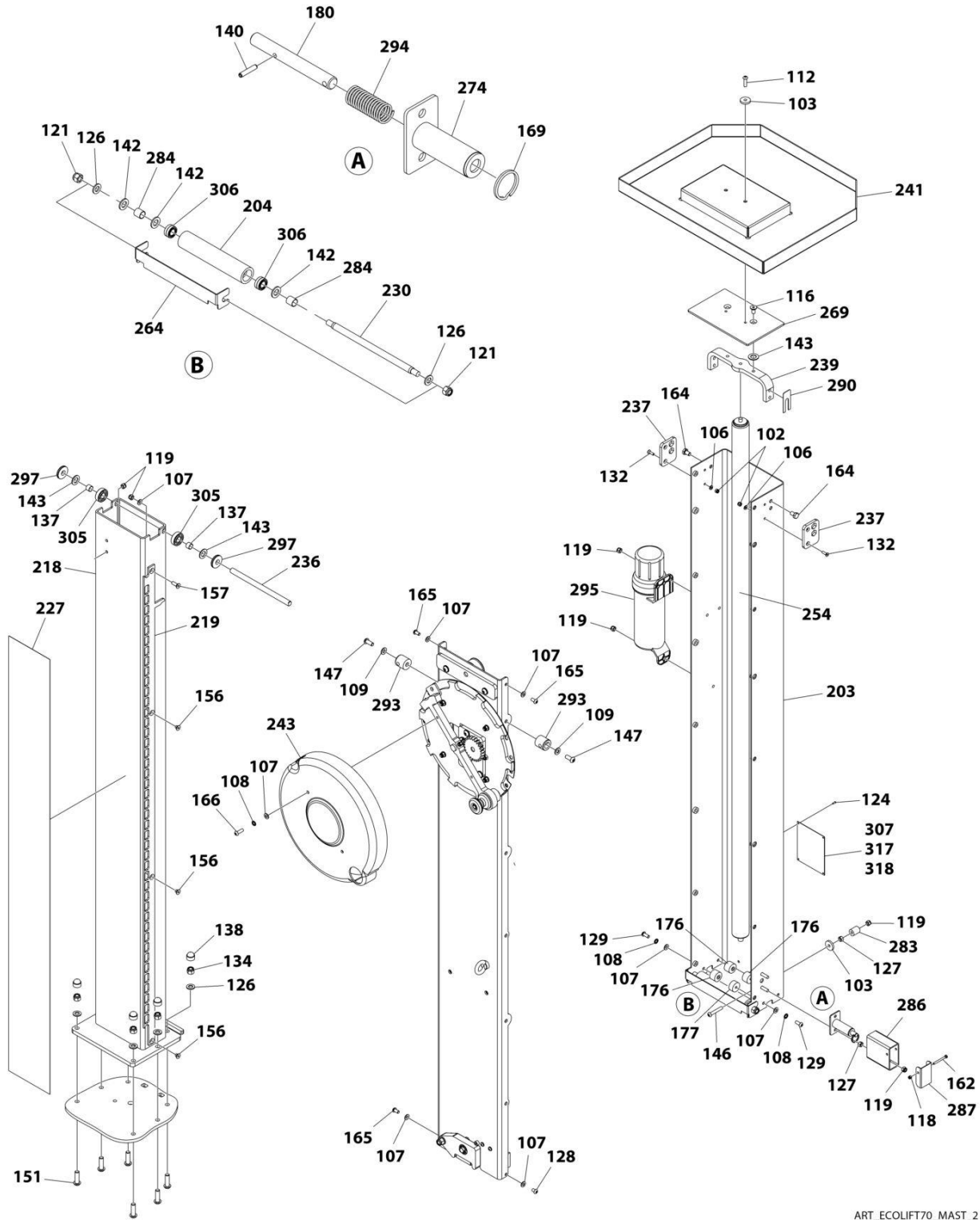
ITEM	PART NUMBER	QTY	DESCRIPTION	REV
101	1001264556	3	Bolt M6 x 35	
102	1001264557	7	Nut M6	
106	1001265112	9	Washer M6	
107	1001265113	11	Washer M8	
109	1001265115	2	Washer M10	
110	1001265116	1	Washer M10	
112	1001265121	1	Bolt M8 x 30	
114	1001265124	1	Bolt M5 x 12	
115	1001265127	1	Bolt M6 x 20	
117	1001265133	1	Nut M4	
118	1001265134	1	Nut M5	
119	1001265135	7	Nut M8	
120	1001265136	1	Nut M10	
122	1001265139	1	Nut M16	
123	1001265147	1	Nut 3/4	
125	1001265461	4	Washer M6	
126	1001265462	3	Washer M12	
130	1001265508	1	Bolt M10 x 30	
131	1001265512	2	Bolt M6 x 30	
133	1001265642	1	Cable, Earthing	
134	1001265746	2	Nut M12	
135	1001265750	2	Washer M29	
136	1001265991	1	Washer M20	
139	1001266105	2	Circlip	
141	1001266108	1	Cotterpin	
144	1001266112	2	Bolt M6 x 25	
145	1001266113	3	Bolt M8 x 25	
146	1001266114	1	Bolt M8 x 50	
152	1001266122	1	Bolt M4 x 20	
160	1001266131	2	Bolt M8 x 45	
172	1001266244	1	Plate, Brake Cam	
174	1001266246	1	Disc, Brake	
175	1001266247	1	Plate, Brake Cam	
189	1001266412	4	Bolt 8 x 1-1/2	
192	1001266415	2	Bolt M3 x 12	
194	1001266417	1	Bolt M12 x 45	
195	1001266418	2	Bolt M4 x 16	
198	1001266421	2	Nut M3	
199	1001266422	1	Spacer	
201	1001266424	1	Bushing	
202	1001266425	1	Bushing	
205	1001266428	1	Finger, Easy Release	
206	1001266429	1	Spacer	
207	1001266430	1	Cradle, Finger Handle	
208	1001266431	1	Handle, Emergency Lowering Tool	
209	1001266433	1	Handle, Finger Head	
213	1001266438	1	Spring	
215	1001266614	1	Bushing	

SECTION 2 - ECOLIFT 70 SN P900004871-P900018974 (EXCLUDING P900016888, P900016889, P900018150,P900018179,P900018237)

ITEM	PART NUMBER	QTY	DESCRIPTION	REV
216	1001267378	1	Emergency Lowering Tool (Includes Items 101, 102, 106, 115, 195, 205-209, 213)	
220	1001267384	1	Block, Step	
224	ECLM414	2	Clip	
231	ECLM420	1	Guard, Hub	
233	ECLM422	1	Spacer	
234	ECLM423	1	Axle	
240	ECLM600	1	Wheel	
242	ECLM602	1	Cover, Chassis	
244	ECLM604	1	Buffer, Side	
245	ECLM605	1	Buffer, Step	
246	ECLM606	1	Pin, Brake	
247	ECLM608	1	Buffer, Rear	
249	ECLM610	1	Fixing Strip, Step Buffer	
250	ECLM611	1	Buffer, Corner	
253	ECLM614	1	Brush	
259	ECLM621	1	Fixing Strip, Side Buffer	
260	ECLM622	1	Fixing Strip, Rear Buffer	
263	ECLM701	1	Step	
273	PELM414	1	Spring, Brake	
277	PELM451	1	Level, Spirit	
300	PTM102	1	Castor - Swivel	
301	PTM1022	1	Castor - Swivel	
303	PTM163	2	Cap, Chassis Insert	

SECTION 2 - ECOLIFT 70 SN P900004871-P900018974 (EXCLUDING P900016888, P900016889, P900018150,P900018179,P900018237)

FIGURE 2-2. MAST INSTALLATION



ART_ECOLIFT70_MAST_2

**SECTION 2 - ECOLIFT 70 SN P900004871-P900018974 (EXCLUDING
P900016888, P900016889, P900018150, P900018179, P900018237)**

FIGURE 2-2. MAST INSTALLATION

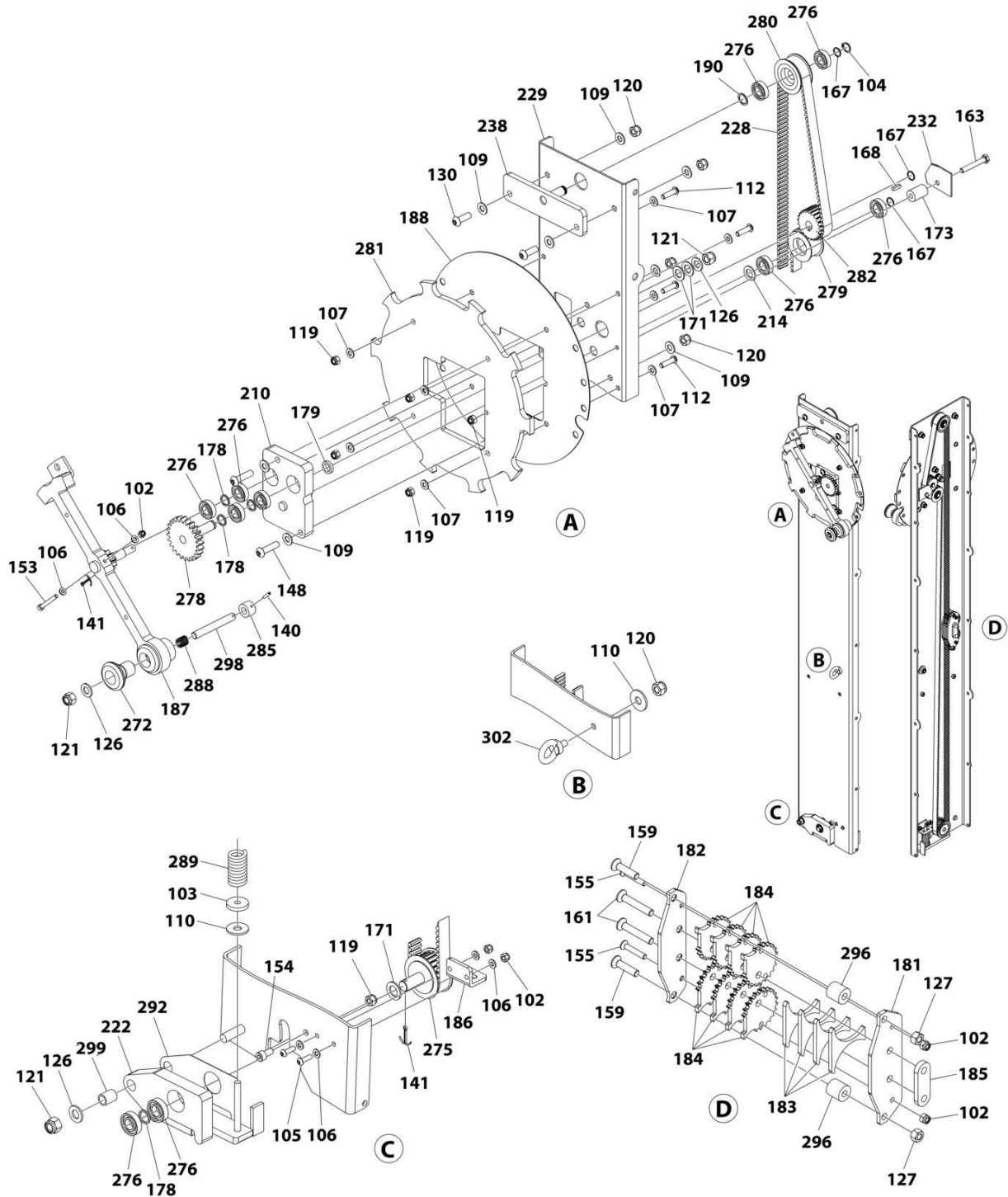
ITEM	PART NUMBER	QTY	DESCRIPTION	REV
102	1001264557	2	Nut M6	
103	1001264558	2	Washer M8	
106	1001265112	2	Washer M6	
107	1001265113	9	Washer M8	
108	1001265114	3	Washer M8	
109	1001265115	2	Washer M10	
112	1001265121	1	Bolt M8 x 30	
116	1001265131	1	Bolt M10 x 20	
118	1001265134	1	Nut M5	
119	1001265135	6	Nut M8	
121	1001265138	2	Nut M12	
124	1001265149	1	Rivet	
126	1001265462	6	Washer M12	
127	1001265496	2	Nut M8	
128	1001265506	1	Bolt M8 x 12	
129	1001265507	2	Bolt M8 x 20	
132	1001265514	2	Bolt M6 x 25	
134	1001265746	4	Nut M12	
137	1001266100	2	Bushing	
138	1001266101	4	Nut M12	
140	1001266107	1	Pin, Spring	
142	1001266109	3	Washer M14	
143	1001266110	3	Washer M16	
146	1001266114	1	Bolt M8 x 50	
147	1001266115	2	Bolt M10 x 25	
151	1001266121	6	Bolt M12 x 40	
156	1001266127	3	Bolt M8 x 10	
157	1001266128	1	Bolt M8 x 25	
162	1001266137	1	Bolt M5 x 50	
164	1001266139	2	Bolt M10 x 16	
165	1001266144	3	Bolt M8 x 16	
166	1001266145	1	Bolt M8 x 25	
169	1001266211	1	Ring, Interlock Pin	
176	1001266254	3	Wear Disc	
177	1001266255	1	Wear Disc	
180	1001266259	1	Pin, Interlock	
203	1001266426	1	Mast, Outer	
204	1001266427	1	Roller, Outer Mast	
218	1001267382	1	Mast, Inner	
219	1001267383	1	Interlock Strip, Mast	
227	ECLM416	1	Strip, Wear	
230	ECLM419	1	Axle, Roller	
236	ECLM426	1	Axle, Wheel	
237	ECLM428	2	Plate, Lock	
239	ECLM434	1	Mounting, Gas Strut	
241	ECLM601	1	Tray, Tool	
243	ECLM603	1	Cover, Handle	
254	ECLM615	1	Strut	

SECTION 2 - ECOLIFT 70 SN P900004871-P900018974 (EXCLUDING P900016888, P900016889, P900018150,P900018179,P900018237)

ITEM	PART NUMBER	QTY	DESCRIPTION	REV
264	ECLM702	1	Cover, Roller	
269	ECLM708	1	Cap, Mast	
274	PELM421	1	Housing, Interlock	
283	PELM475	1	Reel	
284	PELM478	2	Spacer	
286	PELM481	1	Cover, Interlock Housing	
287	PELM482	1	Cap, Interlock Housing	
290	PELM485	1	Spacer	
293	PELM489	2	Peg, Cage Mounting	
294	PELM494	1	Spring	
295	PELM495	1	Canister, Document	
297	PELM498	2	Roller, Corner	
305	PTNSPM562	2	Bearing, Roller	
306	PTNSPM664	2	Bearing, Needle Roller	
307	See Note	NSS	Nameplate - Manufacturers Serial Number (Note: Not Available for Purchase)	
317	See Note	NSS	Nameplate - Manufacturers Serial Number (Note: Not Available for Purchase)	
318	See Note	NSS	Nameplate - Manufacturers Serial Number (Note: Not Available for Purchase)	

SECTION 2 - ECOLIFT 70 SN P900004871-P900018974 (EXCLUDING P900016888, P900016889, P900018150,P900018179,P900018237)

FIGURE 2-3. LIFT ASSEMBLY INSTALLATION



ART_ECOLIFT70_LIFT ASSEMBLY_2

**SECTION 2 - ECOLIFT 70 SN P900004871-P900018974 (EXCLUDING
P900016888, P900016889, P900018150, P900018179, P900018237)**

FIGURE 2-3. LIFT ASSEMBLY INSTALLATION

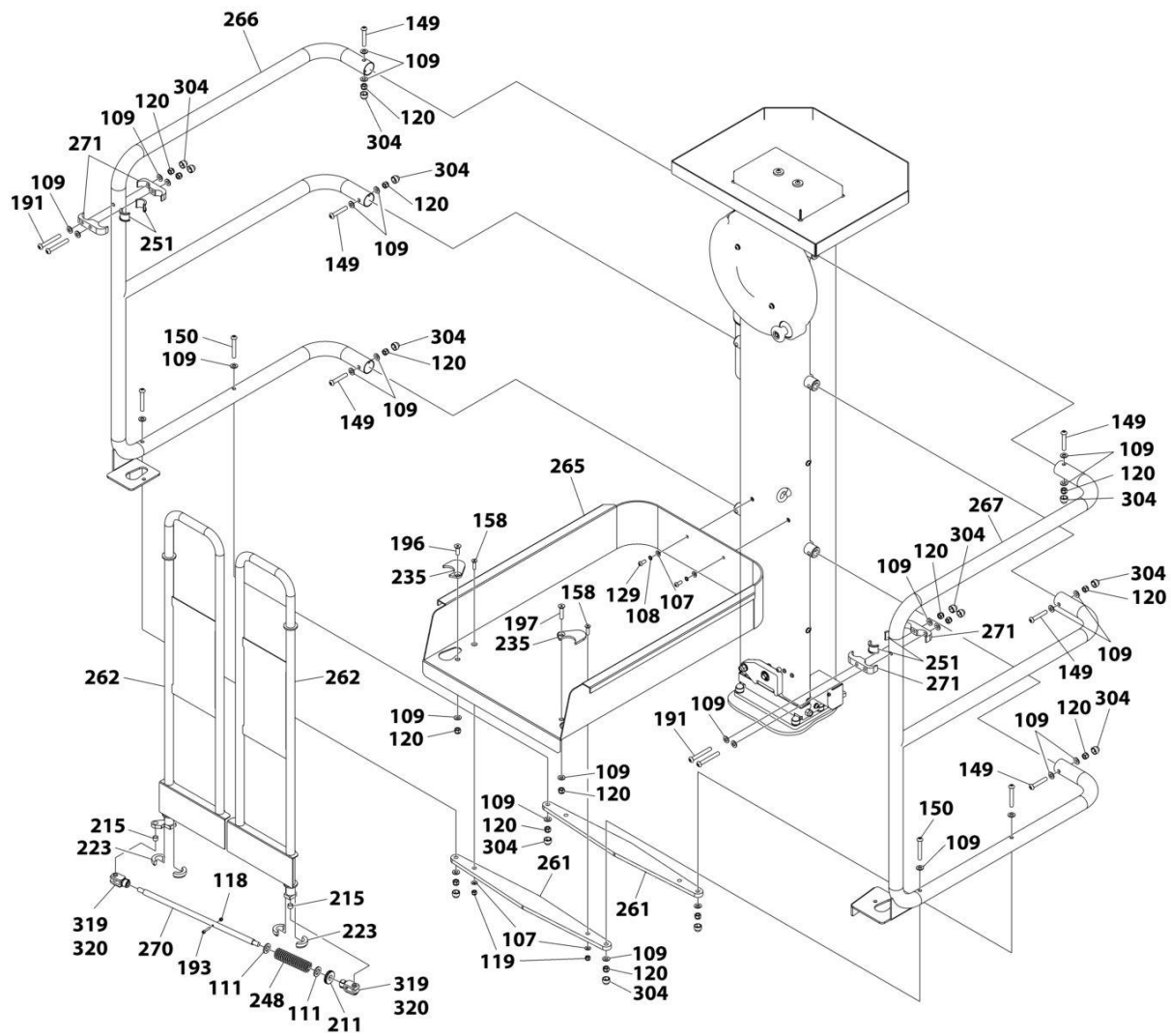
ITEM	PART NUMBER	QTY	DESCRIPTION	REV
102	1001264557	5	Nut M6	
103	1001264558	1	Washer M8	
104	1001264559	1	Circlip	
105	1001264707	2	Bolt M6 x 20	
106	1001265112	6	Washer M6	
107	1001265113	8	Washer M8	
109	1001265115	8	Washer M10	
110	1001265116	2	Washer M10	
112	1001265121	4	Bolt M8 x 30	
119	1001265135	6	Nut M8	
120	1001265136	5	Nut M10	
121	1001265138	3	Nut M12	
126	1001265462	3	Washer M12	
127	1001265496	2	Nut M8	
130	1001265508	2	Bolt M10 x 30	
140	1001266107	1	Pin, Spring	
141	1001266108	2	Cotterpin	
148	1001266117	2	Bolt M10 x 40	
153	1001266123	1	Bolt M6 x 50	
154	1001266124	1	Bolt M8 x 16	
155	1001266126	2	Bolt M6 x 35	
159	1001266130	2	Bolt M8 x 35	
161	1001266132	2	Bolt M8 x 50	
163	1001266138	1	Bolt M8 x 55	
167	1001266146	3	Ring, Spring	
168	1001266210	1	Key, Pulley	
171	1001266219	3	Washer, Plastic	
173	1001266245	1	Guide, Reel	
178	1001266257	4	Spacer	
179	1001266258	1	Spacer	
181	1001266260	1	Plate, Belt Clamp Base	
182	1001266261	1	Plate, Belt Clamp Top	
183	1001266262	4	Plate, Belt Clamp Middle	
184	1001266264	8	Cog, Belt Clamp	
185	1001266265	1	Spacer, Belt Clamp	
186	1001266273	1	Mount, Interlock Spring	
187	1001266274	1	Handle	
188	1001266275	1	Cover, Lock Plate Rear	
190	1001266413	1	Bolt M17 x 22-1/2	
210	1001266434	1	Block, Drive Bearing	
214	1001266439	1	Washer	
222	ECLM412	1	Plate, Lower Tensioner	
228	ECLM417	1	Belt	
229	ECLM418	1	Panel, Front Pulley	
232	ECLM421	1	Washer, Drive Belt	
238	ECLM431	1	Mount, Free Wheel Pulley	
272	PELM412	1	Knob, Handle	
275	PELM429	1	Pulley, Lower	

**SECTION 2 - ECOLIFT 70 SN P900004871-P900018974 (EXCLUDING
P900016888, P900016889, P900018150,P900018179,P900018237)**

ITEM	PART NUMBER	QTY	DESCRIPTION	REV
276	PELM442	10	Bearing, Pulley	
278	PELM462	1	Gear, Drive	
279	PELM467	1	Pulley, Guide	
280	PELM469	1	Pulley, Free Wheel	
281	PELM471	1	Plate, Lock	
282	PELM472	1	Pulley, Drive	
285	PELM480	1	Tip, Lock Pin	
288	PELM483	1	Spring, Handle	
289	PELM484	1	Spring, Belt	
292	PELM488	1	Plate, Lower Pulley Tensioner	
296	PELM496	2	Reel, Clamp	
298	PELM499	1	Pin, Lock	
299	PELM506	1	Bushing	
302	PTM149	1	Eye, Harness	

SECTION 2 - ECOLIFT 70 SN P900004871-P900018974 (EXCLUDING P900016888, P900016889, P900018150,P900018179,P900018237)

FIGURE 2-4. PLATFORM INSTALLATION 1OF2



ART_ECOLIFT70_PLATFORM_2_1OF2

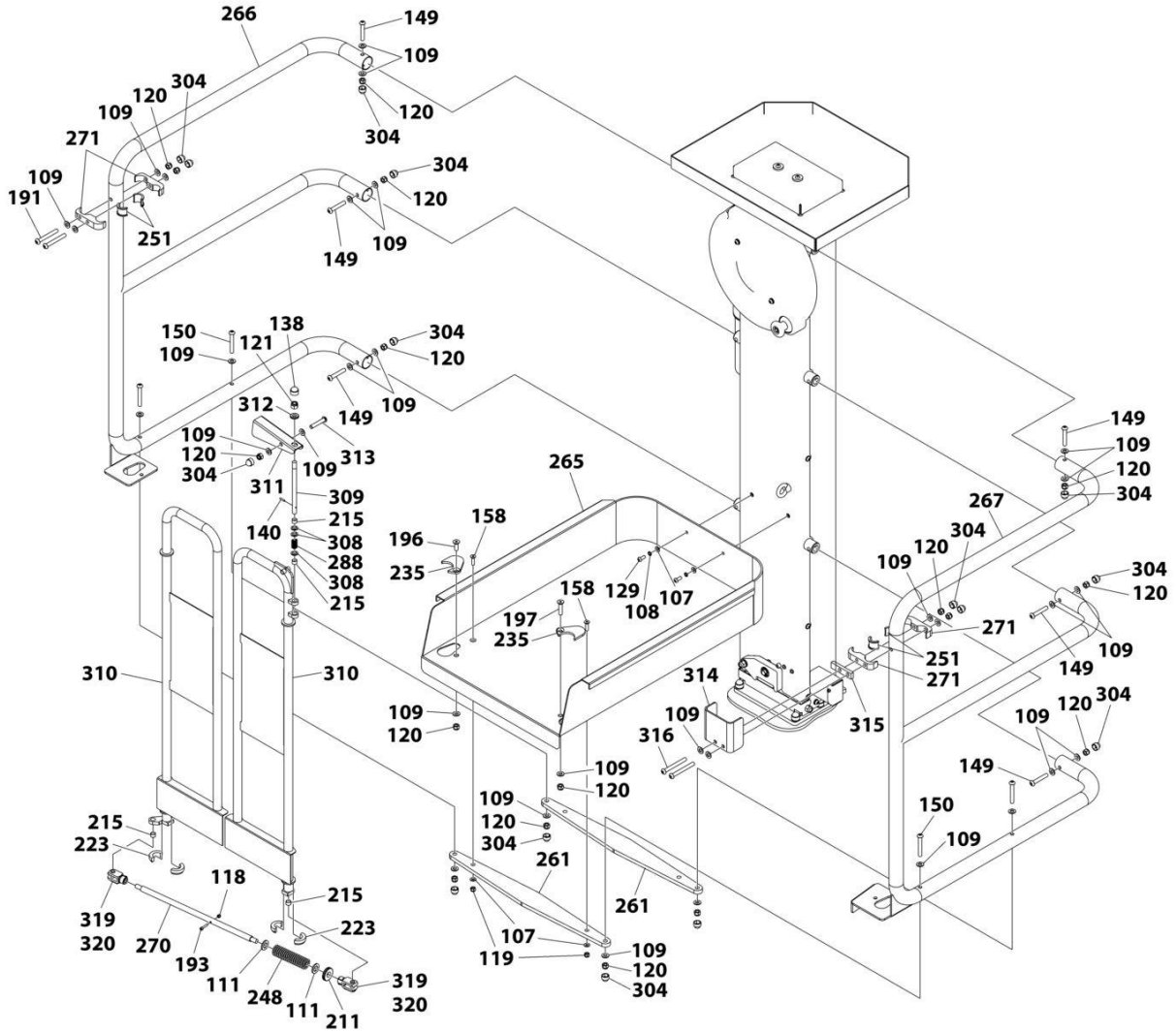
**SECTION 2 - ECOLIFT 70 SN P90004871-P90018974 (EXCLUDING
P900016888, P900016889, P900018150,P900018179,P900018237)**

FIGURE 2-4. PLATFORM INSTALLATION 1OF2

ITEM	PART NUMBER	QTY	DESCRIPTION	REV
107	1001265113	4	Washer M8	
108	1001265114	2	Washer M8	
109	1001265115	30	Washer M10	
111	1001265117	2	Washer M16	
118	1001265134	1	Nut M5	
119	1001265135	2	Nut M8	
120	1001265136	16	Nut M10	
129	1001265507	2	Bolt M8 x 20	
149	1001266119	6	Bolt M10 x 60	
150	1001266120	4	Bolt M10 x 70	
158	1001266129	2	Bolt M8 x 30	
191	1001266414	4	Bolt M10 x 80	
193	1001266416	1	Bolt M5 x 25	
196	1001266419	1	Bolt M10 x 30	
197	1001266420	1	Bolt M10 x 45	
211	1001266435	1	Spacer	
215	1001266614	2	Bushing	
223	ECLM413	2	Bushing	
235	ECLM425	1	Cover, Gate (Pair)	
248	ECLM609	1	Spring	
251	ECLM612	2	Bushing	
261	ECLM623	2	Strap, Platform Tray Support	
262	1001266137	2	Bolt M5 x 50	
265	ECLM704	1	Tray, Platform	
266	ECLM705	1	Guardrail - Left	
267	ECLM706	1	Guardrail - Right	
270	ECLM709	1	Rod, Gate Link	
271	ECLM710	4	Bracket, Hinge	
304	PTNSPM560	14	Nut M10	
319	1001279106	2	Body, Clevis	
320	1001279107	2	Clip, Clevis	

SECTION 2 - ECOLIFT 70 SN P900004871-P900018974 (EXCLUDING P900016888, P900016889, P900018150,P900018179,P900018237)

FIGURE 2-5. PLATFORM INSTALLATION 2OF2



ART_ECOLIFT70_PLATFORM_2_2OF2

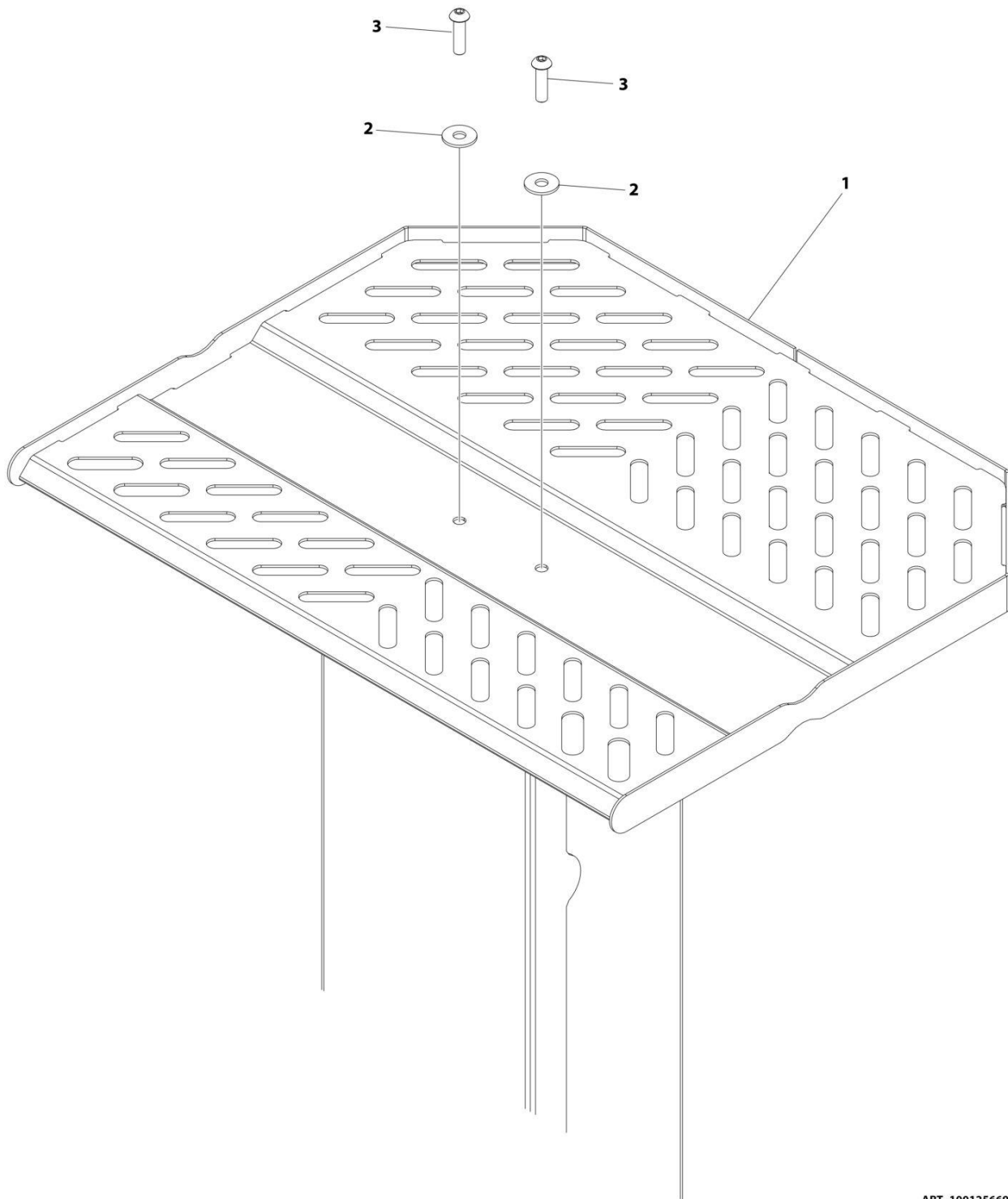
**SECTION 2 - ECOLIFT 70 SN P900004871-P900018974 (EXCLUDING
P900016888, P900016889, P900018150, P900018179, P900018237)**

FIGURE 2-5. PLATFORM INSTALLATION 2OF2

ITEM	PART NUMBER	QTY	DESCRIPTION	REV
107	1001265113	4	Washer M8	
108	1001265114	2	Washer M8	
109	1001265115	32	Washer M10	
111	1001265117	2	Washer M16	
118	1001265134	1	Nut M5	
119	1001265135	2	Nut M8	
120	1001265136	17	Nut M10	
121	1001265138	1	Nut M12	
129	1001265507	2	Bolt M8 x 20	
138	1001266101	1	Nut M12	
140	1001266107	1	Pin, Spring	
149	1001266119	6	Bolt M10 x 60	
150	1001266120	4	Bolt M10 x 70	
158	1001266129	2	Bolt M8 x 30	
191	1001266414	2	Bolt M10 x 80	
193	1001266416	1	Bolt M5 x 25	
196	1001266419	1	Bolt M10 x 30	
197	1001266420	1	Bolt M10 x 45	
211	1001266435	1	Spacer	
215	1001266614	4	Bushing	
223	ECLM413	2	Bushing	
235	ECLM425	1	Cover, Gate (Pair)	
248	ECLM609	1	Spring	
251	ECLM612	2	Bushing	
261	ECLM623	2	Strap, Platform Tray Support	
265	ECLM704	1	Tray, Platform	
266	ECLM705	1	Guardrail - Left	
267	ECLM706	1	Guardrail - Right	
270	ECLM709	1	Rod, Gate Link	
271	ECLM710	4	Bracket, Hinge	
288	PELM483	1	Spring, Handle	
304	PTNSPM560	15	Nut M10	
308	1001269639	3	Washer, Spring	
309	1001269642	1	Pin, Lock	
310	1001269641	2	Gate, Platform (locking Gate)	
311	1001269636	1	Handle, Gate Lock	
312	1001269638	1	Washer	
313	1001269694	1	Bolt M10 x 55	
314	1001269643	1	Guard, Gate Lock	
315	1001269644	1	Spacer	
316	1001269695	2	Bolt M10 x 90	
319	1001279106	1	Body, Clevis	
320	1001279107	1	Clip, Clevis	

SECTION 2 - ECOLIFT 70 SN P900004871-P900018974 (EXCLUDING P900016888, P900016889, P900018150,P900018179,P900018237)

FIGURE 2-6. STOCK PICKER TRAY INSTALLATION



ART_1001256698

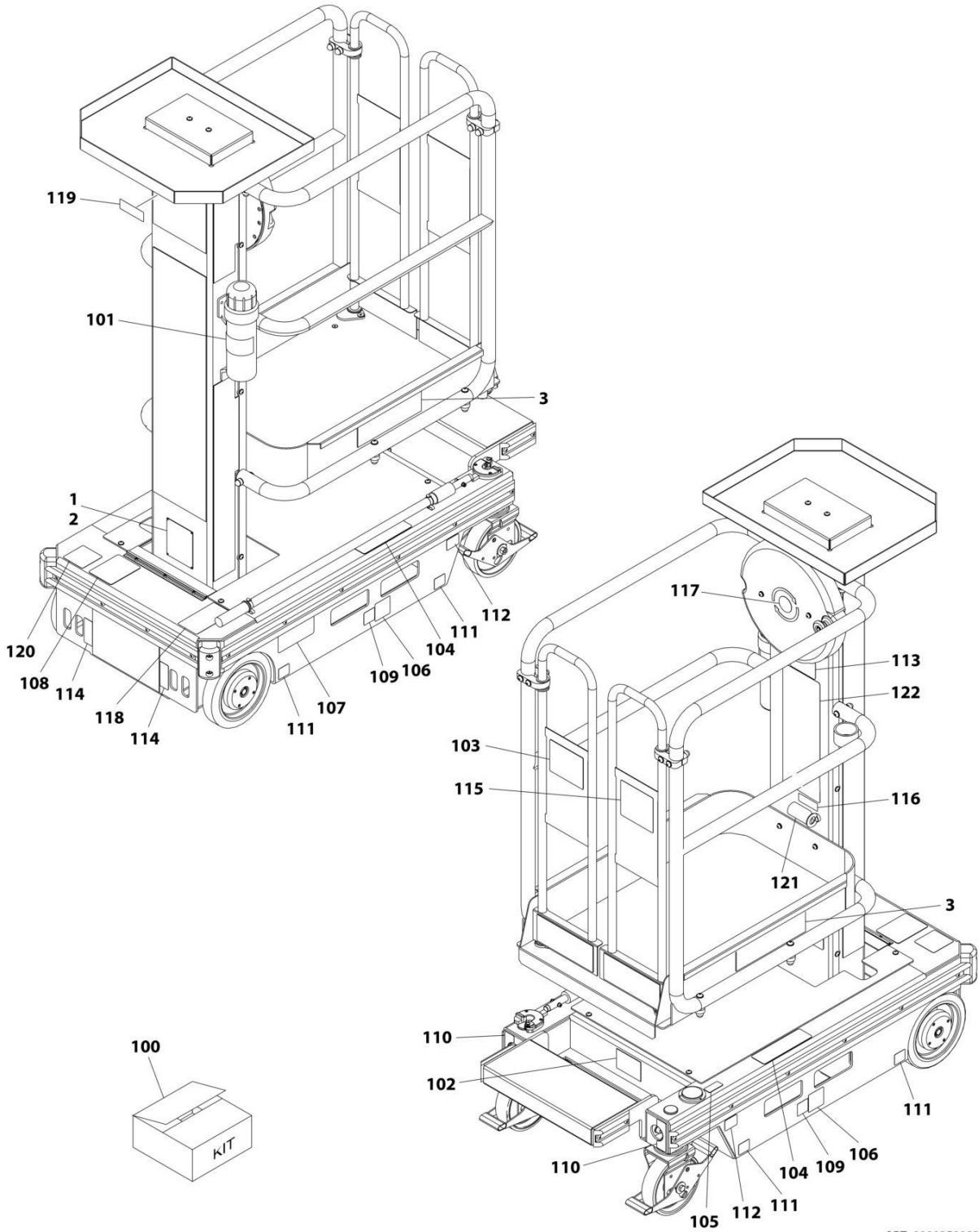
**SECTION 2 - ECOLIFT 70 SN P900004871-P900018974 (EXCLUDING
P900016888, P900016889, P900018150,P900018179,P900018237)**

FIGURE 2-6. STOCK PICKER TRAY INSTALLATION

ITEM	PART NUMBER	QTY	DESCRIPTION	REV
	1001256698	Ref	TOOL TRAY INSTALLATION	B
1	1001249314	1	Tool Tray	
2	1001264558	2	Washer M8	
3	1001265121	2	Bolt M8 x 30	

SECTION 2 - ECOLIFT 70 SN P900004871-P900018974 (EXCLUDING P900016888, P900016889, P900018150,P900018179,P900018237)

FIGURE 2-7. DECALS INSTALLATION (ANSI SPECS)



ART_1001251182_E

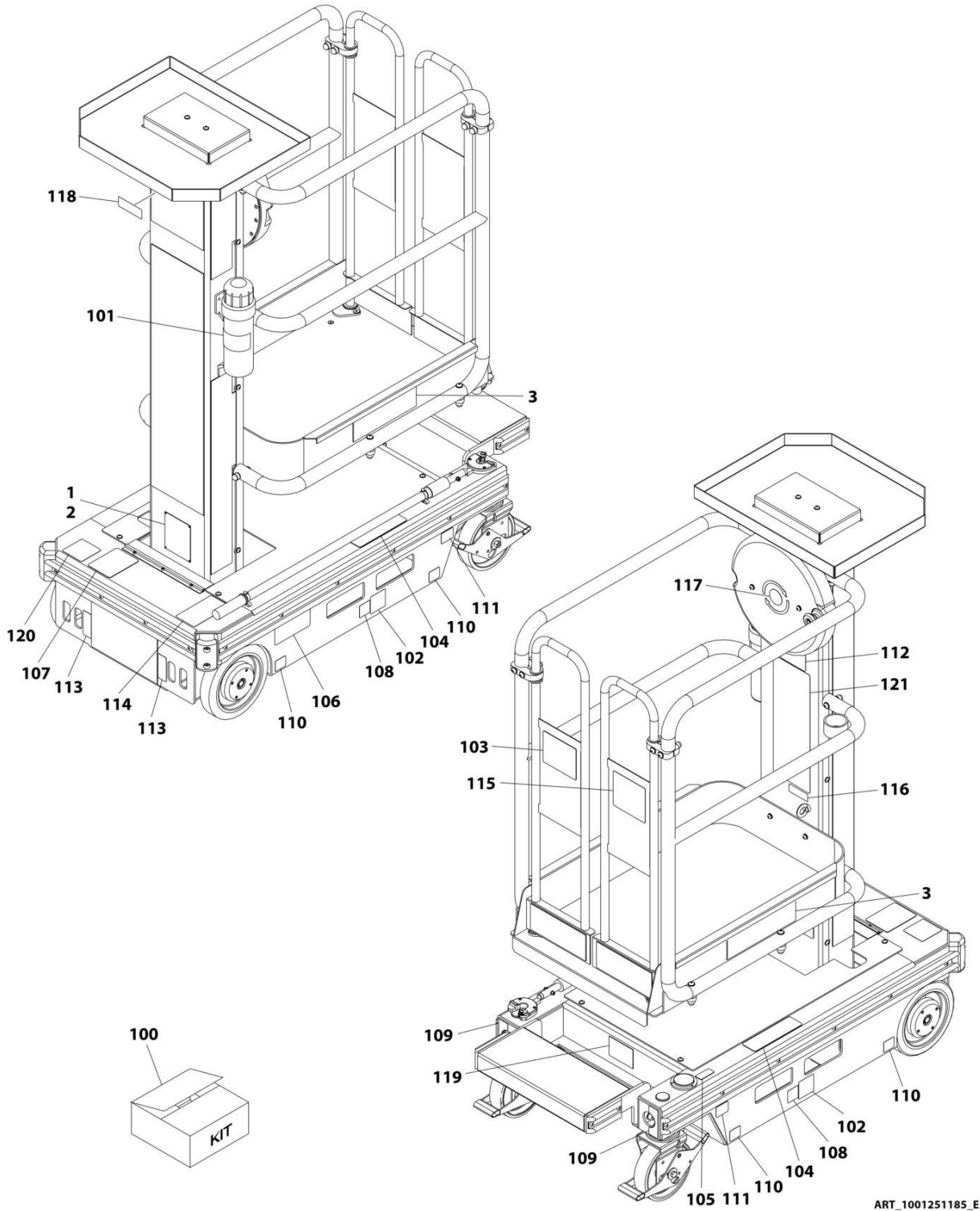
**SECTION 2 - ECOLIFT 70 SN P900004871-P900018974 (EXCLUDING
P900016888, P900016889, P900018150, P900018179, P900018237)**

FIGURE 2-7. DECALS INSTALLATION (ANSI SPECS)

ITEM	PART NUMBER	QTY	DESCRIPTION	REV
	1001251182	Ref	DECAL INSTALLATION - ECO 70	E
1	3820001	4	Rivet (Prior to SN P900014274)	
2	See Note	NSS	Nameplate - Manufacturers Serial Number (Note: Not Available for Purchase) (Prior to SN P900014274)	
3	1001269684	2	Decal - Model Ecolift 70 by JLG (SN P900006655 to Present)	
100	1001269682	1	Decal - Kit	
101	1701509	1	Decal - Manual	
102	1702391	1	Decal - Hand Crushing	
103	1703781	1	Decal - Electrical Hazard	
104	1703786	3	Decal - Crushing Hazard	
105	1703789	1	Decal - Level Indicator	
106	1703817	2	Decal - Fork Lift	
107	1706832	1	Decal - Danger Electrocutation	
108	1001131270	1	Decal - Patent	
109	1001212290	2	Decal - Tie Down	
110	1001213202	2	Decal - Tie Down and Lifting	
111	1001213205	4	Decal - Wheel Load	
112	1001213208	2	Decal - Caster Lock Direction	
113	1001213279	1	Decal - Capacity	
114	1001213442	2	Decal - Lifting and Tie Down	
115	1001213545	1	Decal - Warning, Crushing, Tipping, Hazard	
116	1001213582	1	Decal - Fall Restraint	
117	1001213997	1	Decal - Elevate Crank	
118	1001214125	1	Decal - Manual Descending	
119	1001215043	1	Decal - Warning Pressure	
120	1001223055	1	Decal - Yearly Inspection	
121	1001231801	1	Decal - Prop 65 Warning	
122	1001251158	1	Decal - Warning	

SECTION 2 - ECOLIFT 70 SN P900004871-P900018974 (EXCLUDING P900016888, P900016889, P900018150,P900018179,P900018237)

FIGURE 2-8. DECALS INSTALLATION (BRAZIL SPECS)



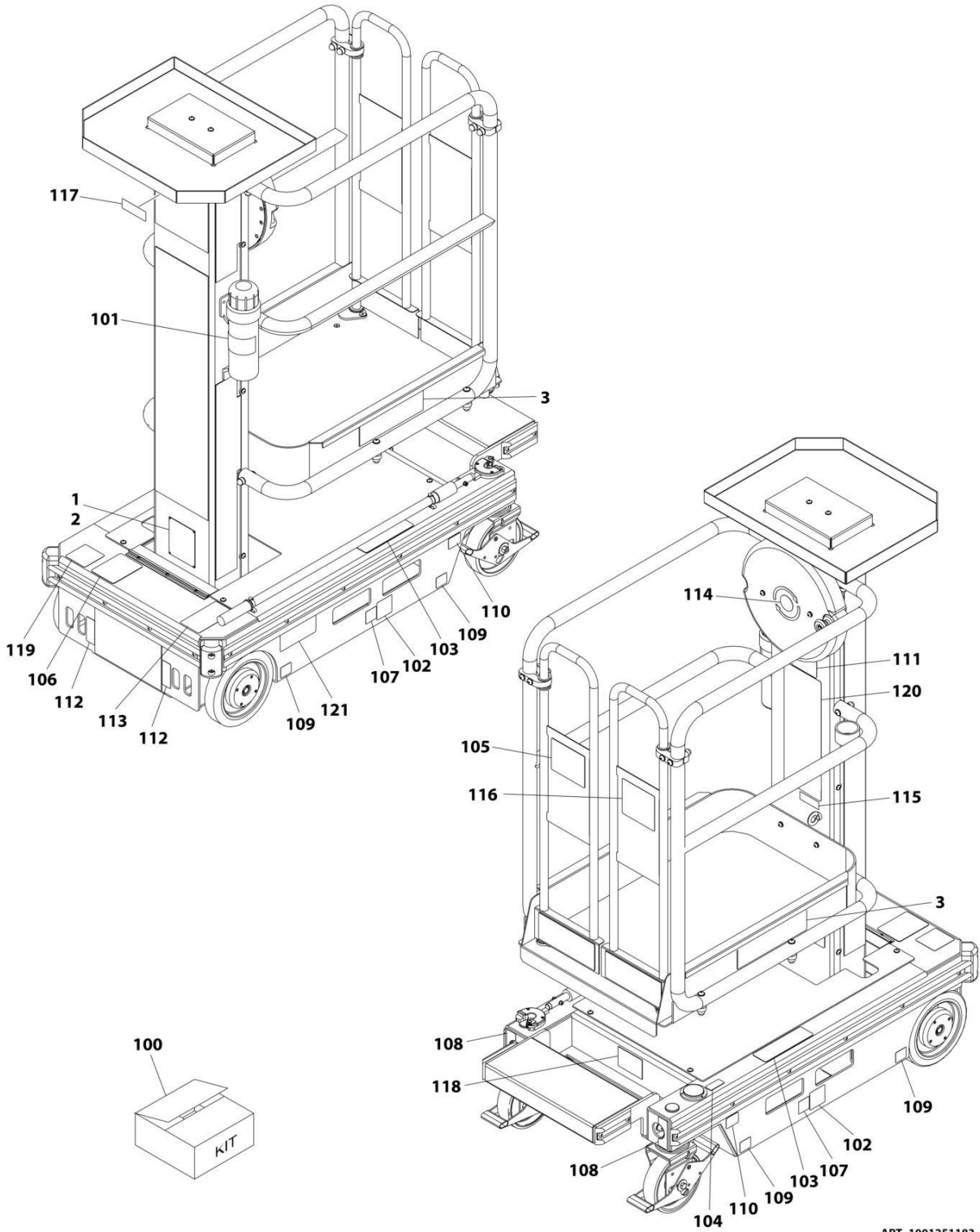
**SECTION 2 - ECOLIFT 70 SN P900004871-P900018974 (EXCLUDING
P900016888, P900016889, P900018150, P900018179, P900018237)**

FIGURE 2-8. DECALS INSTALLATION (BRAZIL SPECS)

ITEM	PART NUMBER	QTY	DESCRIPTION	REV
	1001251185	Ref	DECAL INSTALLATION - ECO 70	E
1	3820001	4	Rivet (Prior to SN P900014274)	
2	See Note	NSS	Nameplate - Manufacturers Serial Number (Note: Not Available for Purchase) (Prior to SN P900014274)	
3	1001269684	2	Decal - Model Ecolift 70 by JLG (SN P900006655 to Present)	
100	1001269683	1	Decal - Kit	
101	1701509	1	Decal - Manual	
102	1703817	2	Decal - Fork Lift	
103	1704021	1	Decal - Electrical Hazard	
104	1704024	3	Decal - Crushing Hazard	
105	1704026	1	Decal - Level Indicator	
106	1706833	1	Decal - Danger Electrocutation	
107	1001131270	1	Decal - Patent	
108	1001212290	2	Decal - Tie Down	
109	1001213202	2	Decal - Tie Down and Lifting	
110	1001213205	4	Decal - Wheel Load	
111	1001213208	2	Decal - Caster Lock Direction	
112	1001213279	1	Decal - Capacity	
113	1001213442	2	Decal - Lifting and Tie Down	
114	1001214125	1	Decal - Manual Descending	
115	1001241801	1	Decal - Crushing and Tipping	
116	1001241802	1	Decal - Landyard Attachment	
117	1001241803	1	Decal - Elevate Crank	
118	1001241804	1	Decal - Warning Label	
119	1001241805	1	Decal - Hand Crushing	
120	1001245185	1	Decal - Yearly Inspection	
121	1001251161	1	Decal - Warning	

SECTION 2 - ECOLIFT 70 SN P900004871-P900018974 (EXCLUDING P900016888, P900016889, P900018150, P900018179, P900018237)

FIGURE 2-9. DECALS INSTALLATION (CSA SPECS)



ART_1001251183_E

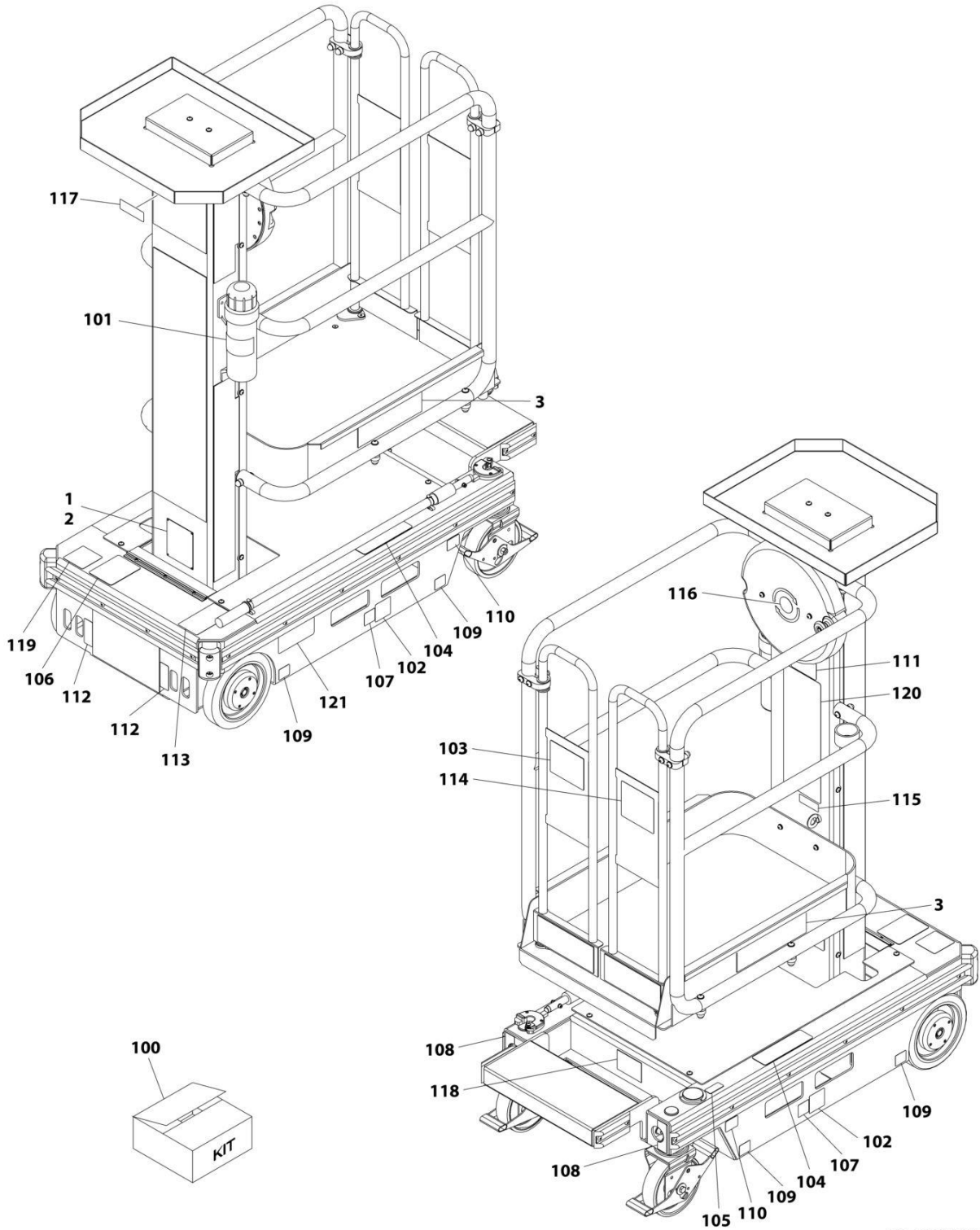
**SECTION 2 - ECOLIFT 70 SN P900004871-P900018974 (EXCLUDING
P900016888, P900016889, P900018150, P900018179, P900018237)**

FIGURE 2-9. DECALS INSTALLATION (CSA SPECS)

ITEM	PART NUMBER	QTY	DESCRIPTION	REV
	1001251183	Ref	DECAL INSTALLATION - ECO 70	E
1	3820001	4	Rivet (Prior to SN P900014274)	
2	See Note	NSS	Nameplate - Manufacturers Serial Number (Note: Not Available for Purchase) (Prior to SN P900014274)	
3	1001269684	2	Decal - Model Ecolift 70 by JLG (SN P900006655 to Present)	
100	1001285852	1	Decal - Kit	
101	1701509	1	Decal - Manual	
102	1703817	2	Decal - Fork Lift	
103	1704039	3	Decal - Crushing Hazard	
104	1704041	1	Decal - Level Indicator	
105	1704795	1	Decal - Electrical Hazard	
106	1001131270	1	Decal - Patent	
107	1001212290	2	Decal - Tie Down	
108	1001213202	2	Decal - Tie Down and Lifting	
109	1001213205	4	Decal - Wheel Load	
110	1001213208	2	Decal - Caster Lock Direction	
111	1001213279	1	Decal - Capacity	
112	1001213442	2	Decal - Lifting and Tie Down	
113	1001214125	1	Decal - Manual Descending	
114	1001215005	1	Decal - Elevate Direction	
115	1001215009	1	Decal - Landyard Fall Restrain	
116	1001215010	1	Decal - Warning Tipping	
117	1001215049	1	Decal - Warning Pressure	
118	1001215113	1	Decal - Warning Hand Crushing	
119	1001245181	1	Decal - Yearly Inspection	
120	1001251159	1	Decal - Warning	
121	1001256551	1	Decal - Danger Electrocution	

SECTION 2 - ECOLIFT 70 SN P900004871-P900018974 (EXCLUDING P900016888, P900016889, P900018150, P900018179, P900018237)

FIGURE 2-10. DECALS INSTALLATION (LATIN AMERICAN SPECS)



ART_1001251184_E

**SECTION 2 - ECOLIFT 70 SN P900004871-P900018974 (EXCLUDING
P900016888, P900016889, P900018150, P900018179, P900018237)**

FIGURE 2-10. DECALS INSTALLATION (LATIN AMERICAN SPECS)

ITEM	PART NUMBER	QTY	DESCRIPTION	REV
	1001251184	Ref	DECAL INSTALLATION - ECO 70	E
1	3820001	4	Rivet (Prior to SN P900014274)	
2	See Note	NSS	Nameplate - Manufacturers Serial Number (Note: Not Available for Purchase) (Prior to SN P900014274)	
3	1001269684	2	Decal - Model Ecolift 70 by JLG (SN P900006655 to Present)	
100	1001285853	1	Decal - Kit	
101	1701509	1	Decal - Manual	
102	1703817	2	Decal - Fork Lift	
103	1704029	1	Decal - Electrical Hazard	
104	1704032	3	Decal - Crushing Hazard	
105	1704034	1	Decal - Level Indicator	
106	1001131270	1	Decal - Patent	
107	1001212290	2	Decal - Tie Down	
108	1001213202	2	Decal - Tie Down and Lifting	
109	1001213205	4	Decal - Wheel Load	
110	1001213208	2	Decal - Caster Lock Direction	
111	1001213279	1	Decal - Capacity	
112	1001213442	2	Decal - Lifting and Tie Down	
113	1001214125	1	Decal - Manual Descending	
114	1001241791	1	Decal - Crushing and Tipping	
115	1001241792	1	Decal - Landyard Attachment	
116	1001241793	1	Decal - Elevate Crank	
117	1001241794	1	Decal - Warning Label	
118	1001241795	1	Decal - Hand Crushing	
119	1001245183	1	Decal - Yearly Inspection	
120	1001251160	1	Decal - Warning	
121	1001256552	1	Decal - Danger Electrocution	

SECTION 2 - ECOLIFT 70 SN P900004871-P900018974 (EXCLUDING P900016888, P900016889, P900018150,P900018179,P900018237)

FIGURE 2-11. RECOMMENDED SERVICE PARTS STOCK

ITEM	PART NUMBER	QTY	DESCRIPTION	REV
		Ref	Note: The following list will service one machine (built to current production per date on the front cover) with emergency repair parts which can be installed in the field. Parts from the list should be replaced when inventory is depleted to keep service parts stock supplied. For further information, contact your JLG dealer or the JLG Industries Parts Department.	
	ECLM703	1	Emergency Lowering Tool	
	1001269636	1	Handle, Gate Lock (Platform with Locking Gate)	

SECTION 2 - ECOLIFT 70 SN P900004871-P900018974 (EXCLUDING P900016888, P900016889, P900018150,P900018179,P900018237)

FIGURE 2-12. SPECIAL OPTIONS/ACCESSORIES/KITS

ITEM	PART NUMBER	QTY	DESCRIPTION	REV
		Ref	Note: This list is to accommodate machines ordered with special equipment. Options may not be applicable to all models. For more specific parts information contact JLG Parts Department.	
	PELM500	Ref	MISCELLANEOUS SPECIAL OPTIONS	
		Ref	Cylinder Pressurizing Kit (Includes Hose, Gauges, fittings & Flow Valve)	
	1001298295	Ref	Handle Tip Kit	
	1001256697	Ref	Service Kits & Tools (Prior to SN P900018962)	F
	1001249640	Ref	Static Strap Kit (SN P900018962 to Present)	
	1001302745	Ref	Static Strap Kit	

**SECTION 3 - ECOLIFT 70 SN P900018975 TO PRESENT (INCLUDING
P900016888, P900016889, P900018150,P900018179,P900018237)**

**SECTION 3 - ECOLIFT 70 SN P900018975 TO PRESENT (INCLUDING
P900016888, P900016889, P900018150,P900018179,P900018237)**

**SECTION 3 - ECOLIFT 70 SN P900018975 TO PRESENT (INCLUDING
P900016888, P900016889, P900018150, P900018179, P900018237)**

FIGURE 3-1. FRAME INSTALLATION

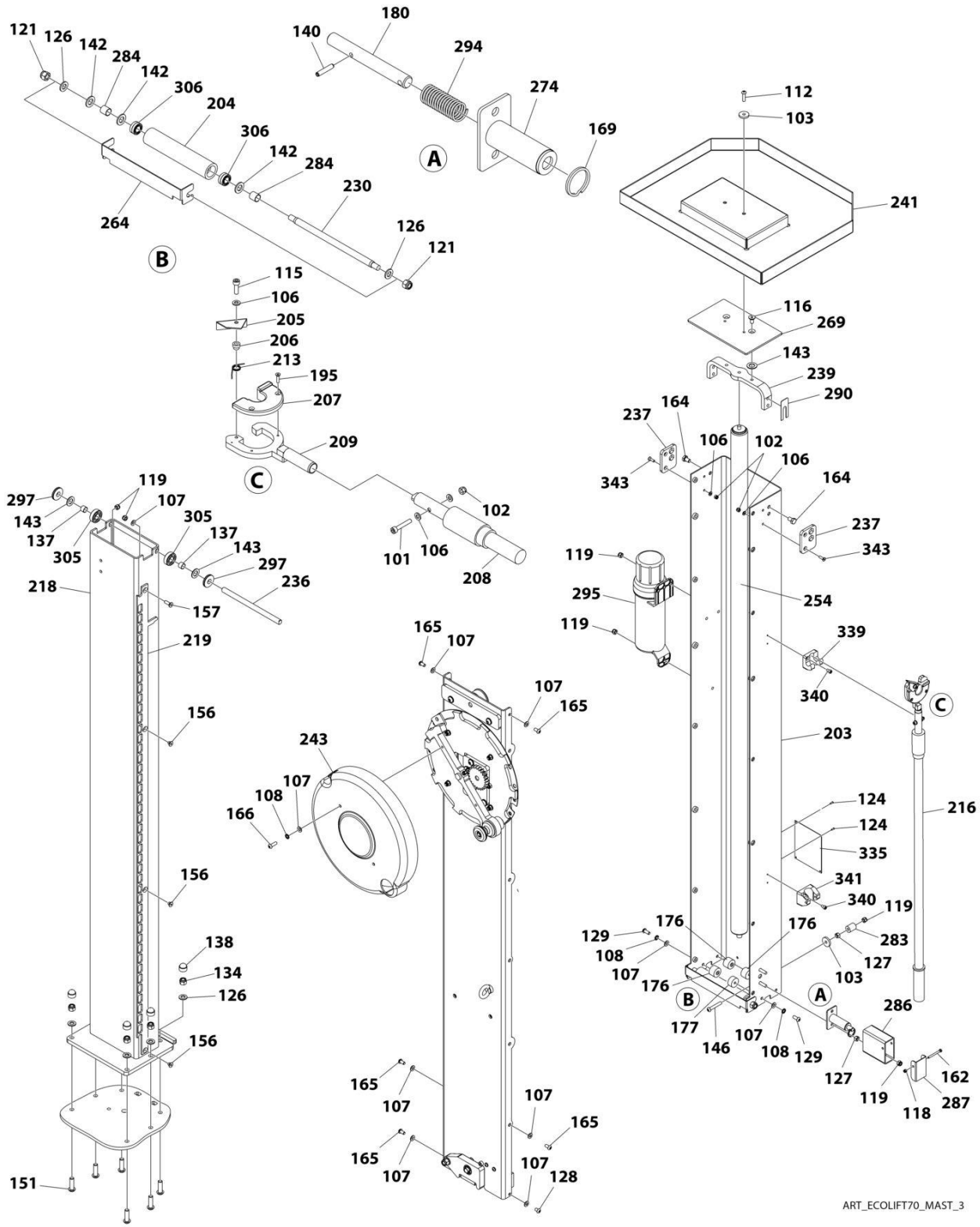
ITEM	PART NUMBER	QTY	DESCRIPTION	REV
101	1001264556	2	Bolt M6 x 35	
102	1001264557	6	Nut M6	
106	1001265112	6	Washer M6	
107	1001265113	7	Washer M8	
109	1001265115	2	Washer M10	
110	1001265116	1	Washer M10	
112	1001265121	1	Bolt M8 x 30	
114	1001265124	1	Bolt M5 x 12	
117	1001265133	1	Nut M4	
119	1001265135	2	Nut M8	
120	1001265136	1	Nut M10	
122	1001265139	1	Nut M16	
123	1001265147	1	Nut 3/4	
125	1001265461	4	Washer M6	
126	1001265462	3	Washer M12	
130	1001265508	1	Bolt M10 x 30	
131	1001265512	2	Bolt M6 x 30	
133	1001265642	1	Cable, Earthing	
134	1001265746	1	Nut M12	
136	1001265991	1	Washer M20	
139	1001266105	2	Circlip	
141	1001266108	1	Cotterpin	
144	1001266112	2	Bolt M6 x 25	
145	1001266113	3	Bolt M8 x 25	
146	1001266114	1	Bolt M8 x 50	
152	1001266122	1	Bolt M4 x 20	
160	1001266131	2	Bolt M8 x 45	
172	1001266244	1	Plate, Brake Cam	
174	1001266246	1	Disc, Brake	
175	1001266247	1	Plate, Brake Cam	
189	1001266412	4	Bolt 8 x 1-1/2	
194	1001266417	1	Bolt M12 x 45	
199	1001266422	1	Spacer	
201	1001266424	1	Bushing	
202	1001266425	1	Bushing	
215	1001266614	1	Bushing	
220	1001267384	1	Block, Step	
231	ECLM420	1	Guard, Hub	
233	ECLM422	1	Spacer	
234	ECLM423	1	Axle	
240	ECLM600	1	Wheel	
242	ECLM602	1	Cover, Chassis	
244	ECLM604	1	Buffer, Side	
245	ECLM605	1	Buffer, Step	
246	ECLM606	1	Pin, Brake	
247	ECLM608	1	Buffer, Rear	
249	ECLM610	1	Fixing Strip, Step Buffer	
250	ECLM611	1	Buffer, Corner	

SECTION 3 - ECOLIFT 70 SN P900018975 TO PRESENT (INCLUDING P900016888, P900016889, P900018150,P900018179,P900018237)

ITEM	PART NUMBER	QTY	DESCRIPTION	REV
253	ECLM614	1	Brush	
259	ECLM621	1	Fixing Strip, Side Buffer	
260	ECLM622	1	Fixing Strip, Rear Buffer	
273	PELM414	1	Spring, Brake	
303	PTM163	2	Cap, Chassis Insert	
327	1001277964	2	Castor	
328	PTM106	1	Level, Spirit	
329	1001289040	1	Step	

SECTION 3 - ECOLIFT 70 SN P900018975 TO PRESENT (INCLUDING P900016888, P900016889, P900018150, P900018179, P900018237)

FIGURE 3-2. MAST INSTALLATION



ART_ECOLIFT70_MAST_3

**SECTION 3 - ECOLIFT 70 SN P900018975 TO PRESENT (INCLUDING
P900016888, P900016889, P900018150, P900018179, P900018237)**

FIGURE 3-2. MAST INSTALLATION

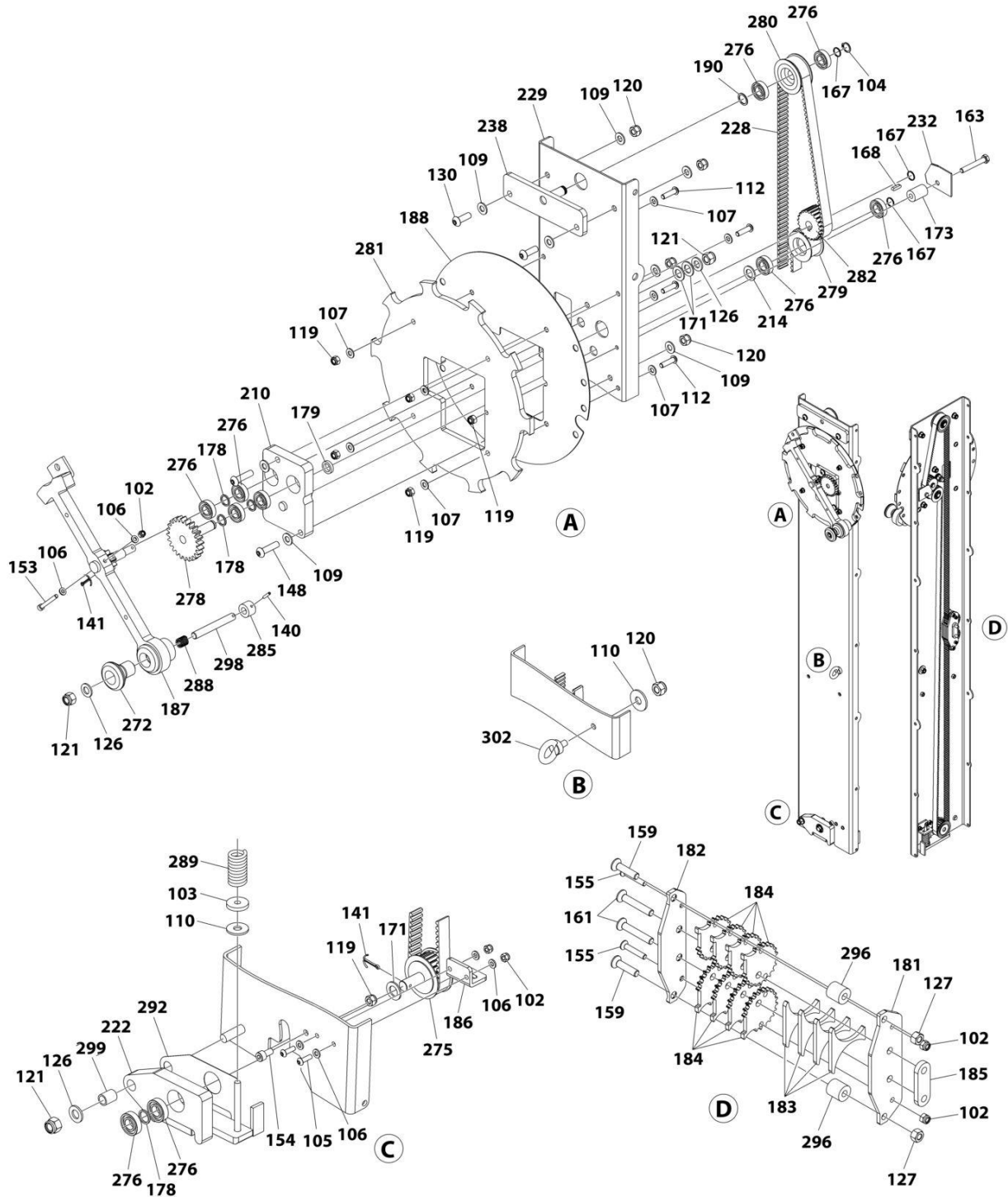
ITEM	PART NUMBER	QTY	DESCRIPTION	REV
101	1001264556	1	Bolt M6 x 35	
102	1001264557	3	Nut M6	
103	1001264558	2	Washer M8	
106	1001265112	5	Washer M6	
108	1001265114	3	Washer M8	
112	1001265121	1	Bolt M8 x 30	
115	1001265127	1	Bolt M6 x 20	
116	1001265131	1	Bolt M10 x 20	
118	1001265134	1	Nut M5	
119	1001265135	6	Nut M8	
121	1001265138	2	Nut M12	
124	1001265149	2	Rivet	
126	1001265462	6	Washer M12	
127	1001265496	2	Nut M8	
128	1001265506	1	Bolt M8 x 12	
129	1001265507	2	Bolt M8 x 20	
134	1001265746	4	Nut M12	
137	1001266100	2	Bushing	
138	1001266101	4	Nut M12	
140	1001266107	1	Pin, Spring	
142	1001266109	3	Washer M14	
143	1001266110	3	Washer M16	
146	1001266114	1	Bolt M8 x 50	
151	1001266121	6	Bolt M12 x 40	
156	1001266127	3	Bolt M8 x 10	
157	1001266128	1	Bolt M8 x 25	
162	1001266137	1	Bolt M5 x 50	
164	1001266139	2	Bolt M10 x 16	
165	1001266144	5	Bolt M8 x 16	
166	1001266145	1	Bolt M8 x 25	
169	1001266211	1	Ring, Interlock Pin	
175	1001266247	10	Plate, Brake Cam	
176	1001266254	3	Wear Disc	
177	1001266255	1	Wear Disc	
180	1001266259	1	Pin, Interlock	
195	1001266418	1	Bolt M4 x 16	
203	1001266426	1	Mast, Outer	
204	1001266427	1	Roller, Outer Mast	
205	1001266428	1	Finger, Easy Release	
206	1001266429	1	Spacer	
207	1001266430	1	Cradle, Finger Handle	
208	1001266431	1	Handle, Emergency Lowering Tool	
209	1001266433	1	Handle, Finger Head	
213	1001266438	1	Spring	
216	1001267378	1	Emergency Lowering Tool (Includes Items 101, 102, 106, 115, 195, 205-209, 213)	
218	1001267382	1	Mast, Inner	
219	1001267383	1	Interlock Strip, Mast	
230	ECLM419	1	Axle, Roller	

SECTION 3 - ECOLIFT 70 SN P900018975 TO PRESENT (INCLUDING P900016888, P900016889, P900018150,P900018179,P900018237)

ITEM	PART NUMBER	QTY	DESCRIPTION	REV
236	ECLM426	1	Axle, Wheel	
237	ECLM428	2	Plate, Lock	
239	ECLM434	1	Mounting, Gas Strut	
241	ECLM601	1	Tray, Tool	
243	ECLM603	1	Cover, Handle	
254	ECLM615	1	Strut	
264	ECLM702	1	Cover, Roller	
269	ECLM708	1	Cap, Mast	
274	PELM421	1	Housing, Interlock	
283	PELM475	1	Reel	
284	PELM478	2	Spacer	
286	PELM481	1	Cover, Interlock Housing	
287	PELM482	1	Cap, Interlock Housing	
290	PELM485	1	Spacer	
294	PELM494	1	Spring	
295	PELM495	1	Canister, Document	
297	PELM498	2	Roller, Corner	
305	PTNSPM562	2	Bearing, Roller	
306	PTNSPM664	2	Bearing, Needle Roller	
335	1001291210	1	Nameplate	
339	1001290877	1	Upper Clip	
340	1001265511	2	Bolt M6 x 10	
341	1001290878	1	Lower Clip	
343	1001266544	2	Bolt M6 x 20	

SECTION 3 - ECOLIFT 70 SN P900018975 TO PRESENT (INCLUDING P900016888, P900016889, P900018150, P900018179, P900018237)

FIGURE 3-3. LIFT ASSEMBLY INSTALLATION



ART_ECOLIFT70_LIFT ASSEMBLY_3

**SECTION 3 - ECOLIFT 70 SN P900018975 TO PRESENT (INCLUDING
P900016888, P900016889, P900018150, P900018179, P900018237)**

FIGURE 3-3. LIFT ASSEMBLY INSTALLATION

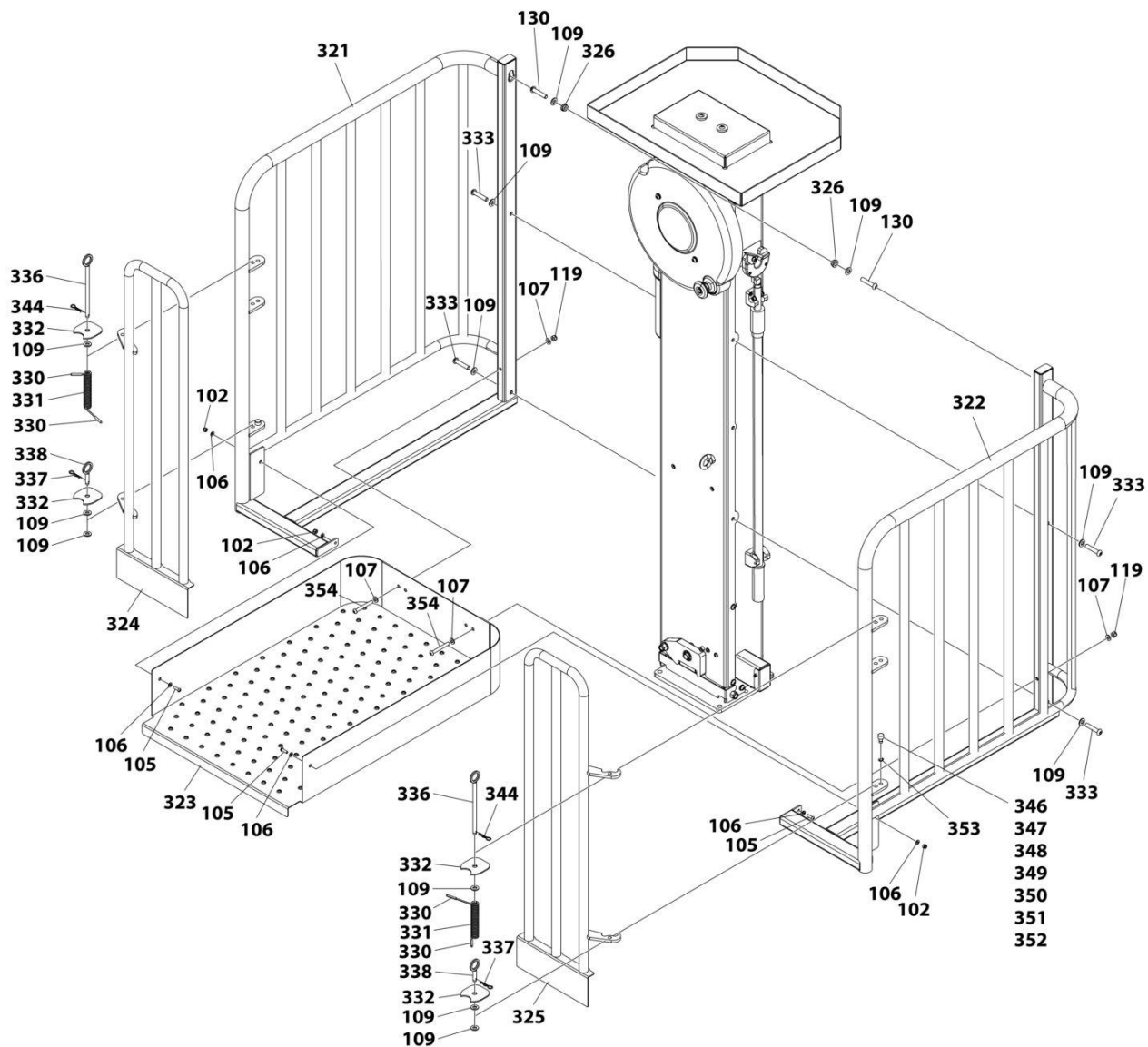
ITEM	PART NUMBER	QTY	DESCRIPTION	REV
102	1001264557	5	Nut M6	
103	1001264558	1	Washer M8	
104	1001264559	1	Circlip	
105	1001264707	2	Bolt M6 x 20	
106	1001265112	6	Washer M6	
107	1001265113	8	Washer M8	
109	1001265115	8	Washer M10	
110	1001265116	2	Washer M10	
112	1001265121	4	Bolt M8 x 30	
119	1001265135	6	Nut M8	
120	1001265136	5	Nut M10	
121	1001265138	3	Nut M12	
126	1001265462	3	Washer M12	
127	1001265496	2	Nut M8	
130	1001265508	2	Bolt M10 x 30	
140	1001266107	1	Pin, Spring	
141	1001266108	2	Cotterpin	
148	1001266117	2	Bolt M10 x 40	
153	1001266123	1	Bolt M6 x 50	
154	1001266124	1	Bolt M8 x 16	
155	1001266126	2	Bolt M6 x 35	
159	1001266130	2	Bolt M8 x 35	
161	1001266132	2	Bolt M8 x 50	
163	1001266138	1	Bolt M8 x 55	
167	1001266146	3	Ring, Spring	
168	1001266210	1	Key, Pulley	
171	1001266219	3	Washer, Plastic	
173	1001266245	1	Guide, Reel	
178	1001266257	4	Spacer	
179	1001266258	1	Spacer	
181	1001266260	1	Plate, Belt Clamp Base	
182	1001266261	1	Plate, Belt Clamp Top	
183	1001266262	4	Plate, Belt Clamp Middle	
184	1001266264	8	Cog, Belt Clamp	
185	1001266265	1	Spacer, Belt Clamp	
186	1001266273	1	Mount, Interlock Spring	
187	1001266274	1	Handle	
188	1001266275	1	Cover, Lock Plate Rear	
190	1001266413	1	Bolt M17 x 22-1/2	
210	1001266434	1	Block, Drive Bearing	
214	1001266439	1	Washer	
222	ECLM412	1	Plate, Lower Tensioner	
228	ECLM417	1	Belt	
229	ECLM418	1	Panel, Front Pulley	
232	ECLM421	1	Washer, Drive Belt	
238	ECLM431	1	Mount, Free Wheel Pulley	
272	PELM412	1	Knob, Handle	
275	PELM429	1	Pulley, Lower	

SECTION 3 - ECOLIFT 70 SN P900018975 TO PRESENT (INCLUDING P900016888, P900016889, P900018150,P900018179,P900018237)

ITEM	PART NUMBER	QTY	DESCRIPTION	REV
276	PELM442	10	Bearing, Pulley	
278	PELM462	1	Gear, Drive	
279	PELM467	1	Pulley, Guide	
280	PELM469	1	Pulley, Free Wheel	
281	PELM471	1	Plate, Lock	
282	PELM472	1	Pulley, Drive	
285	PELM480	1	Tip, Lock Pin	
288	PELM483	1	Spring, Handle	
289	PELM484	1	Spring, Belt	
292	PELM488	1	Plate, Lower Pulley Tensioner	
296	PELM496	2	Reel, Clamp	
298	PELM499	1	Pin, Lock	
299	PELM506	1	Bushing	
302	PTM149	1	Eye, Harness	

SECTION 3 - ECOLIFT 70 SN P900018975 TO PRESENT (INCLUDING P900016888, P900016889, P900018150, P900018179, P900018237)

FIGURE 3-4. PLATFORM INSTALLATION



ART_ECOLIFT70_PLATFORM_3

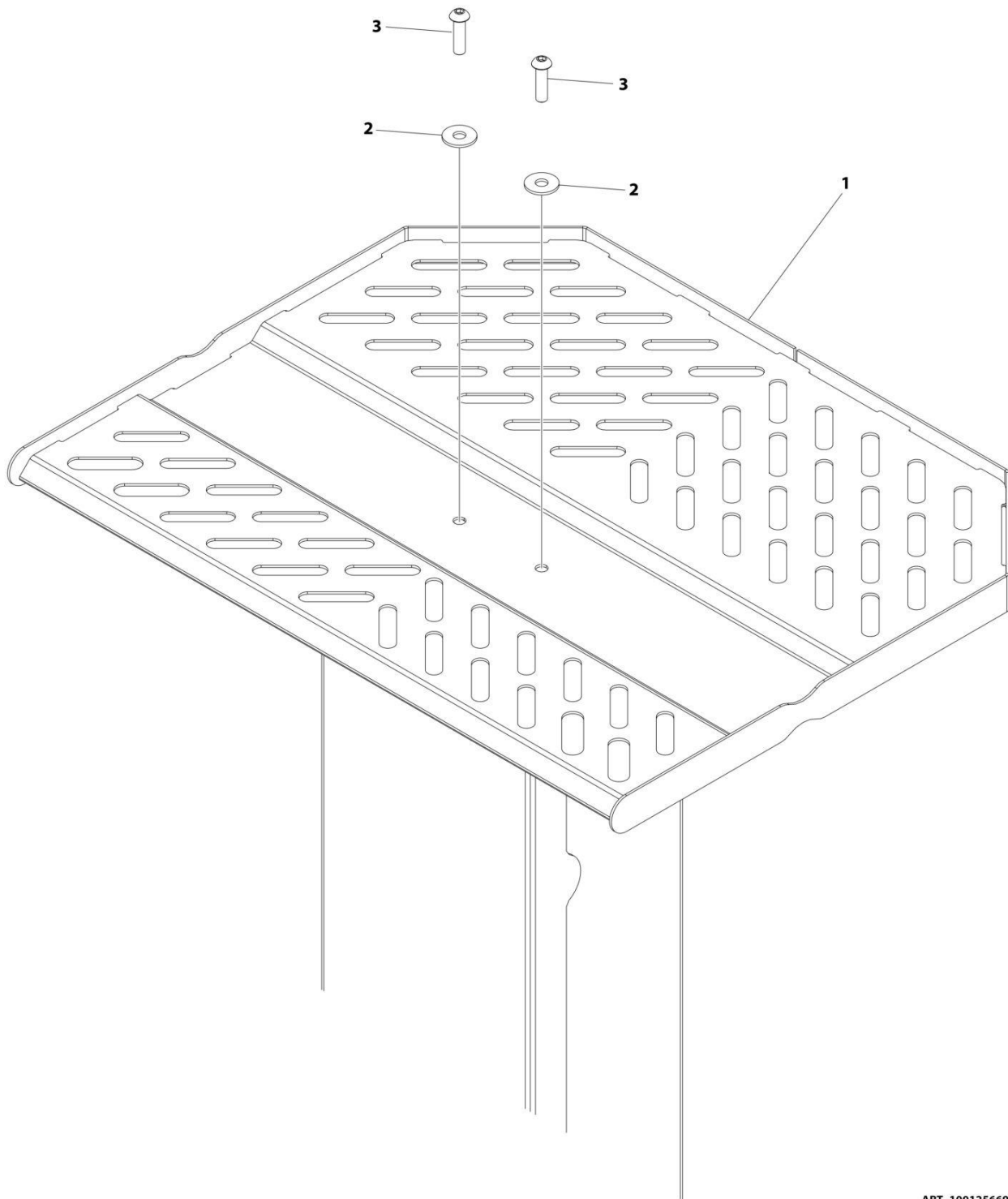
**SECTION 3 - ECOLIFT 70 SN P900018975 TO PRESENT (INCLUDING
P900016888, P900016889, P900018150,P900018179,P900018237)**

FIGURE 3-4. PLATFORM INSTALLATION

ITEM	PART NUMBER	QTY	DESCRIPTION	REV
102	1001264557	3	Nut M6	
105	1001264707	3	Bolt M6 x 20	
106	1001265112	6	Washer M6	
107	1001265113	4	Washer M8	
109	1001265115	12	Washer M10	
119	1001265135	2	Nut M8	
130	1001265508	2	Bolt M10 x 30	
321	1001288689	1	Handrail - Left	
322	1001288690	1	Handrail - Right	
323	1001288254	1	Tray, Platform	
324	1001288248	1	Gate - Left	
325	1001288253	1	Gate - Right	
326	1001289242	2	Adapter, Cage Mounting	
330	1001265092	4	Cap, Spring	
331	1001266216	2	Spring, Gate	
332	PELM430	4	Cover, Hinge	
333	1001290778	4	Bolt M10 x 50	
336	1001290784	2	Pin, Long	
337	1001293031	2	Pin Lanyard, Short	
338	1001290785	2	Pin, Short	
344	1001293032	2	Pin Lanyard, Long	
346	1001301614	2	Stop Bar	
347	1001301615	2	Stop Bar	
348	1001301616	2	Stop Bar	
349	1001301617	2	Stop Bar	
350	1001301618	2	Stop Bar	
351	1001302219	2	Stop Bar	
352	1001302220	2	Stop Bar	
353	1001266536	1	Circlip	
354	1001301625	2	Bolt M8 x 70	

SECTION 3 - ECOLIFT 70 SN P900018975 TO PRESENT (INCLUDING P900016888, P900016889, P900018150,P900018179,P900018237)

FIGURE 3-5. STOCK PICKER TRAY INSTALLATION



ART_1001256698

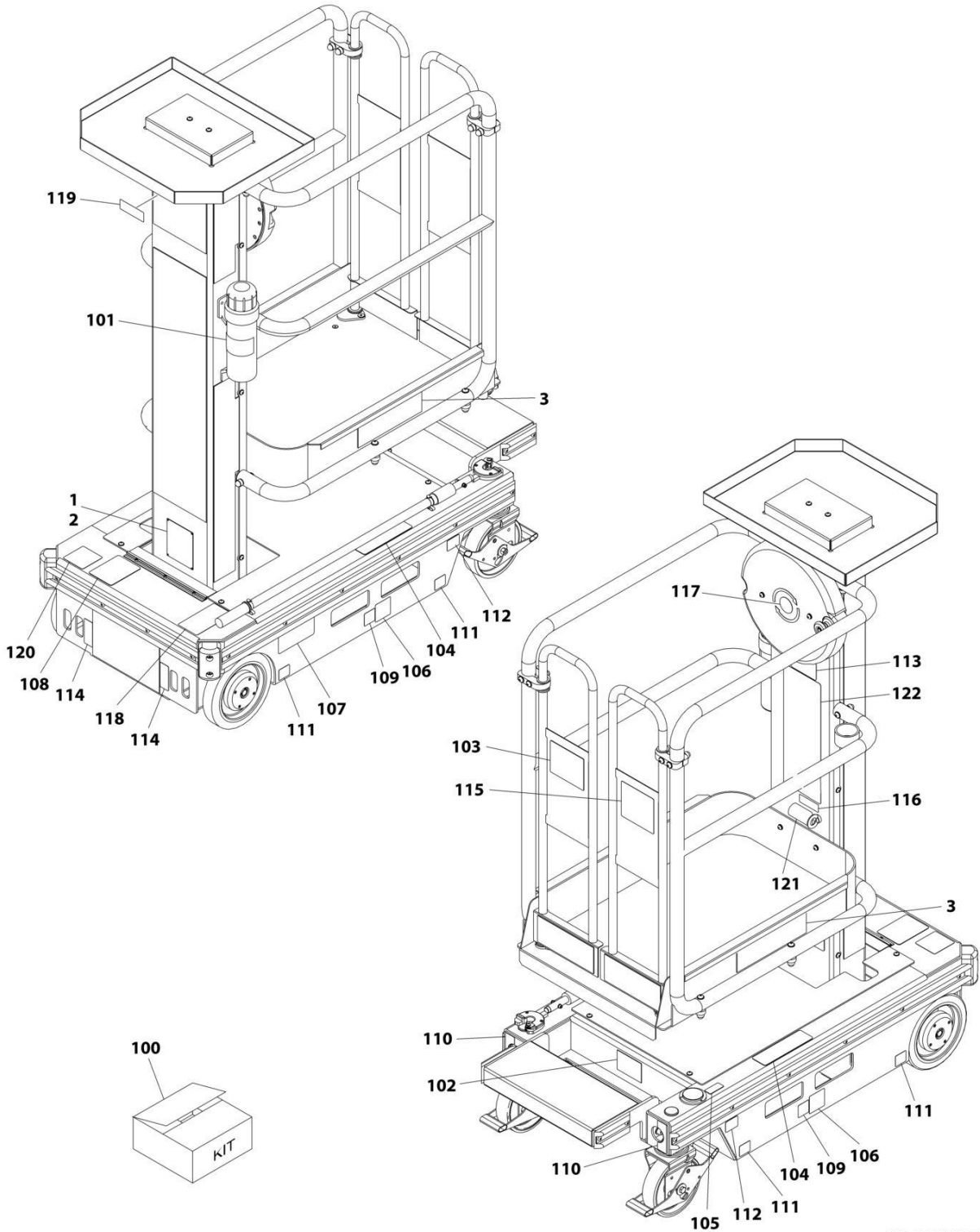
**SECTION 3 - ECOLIFT 70 SN P900018975 TO PRESENT (INCLUDING
P900016888, P900016889, P900018150, P900018179, P900018237)**

FIGURE 3-5. STOCK PICKER TRAY INSTALLATION

ITEM	PART NUMBER	QTY	DESCRIPTION	REV
	1001256698	Ref	TOOL TRAY INSTALLATION	B
1	1001249314	1	Tool Tray	
2	1001264558	2	Washer M8	
3	1001265121	2	Bolt M8 x 30	

SECTION 3 - ECOLIFT 70 SN P900018975 TO PRESENT (INCLUDING P900016888, P900016889, P900018150, P900018179, P900018237)

FIGURE 3-6. DECALS INSTALLATION (ANSI SPECS)



ART_1001251182_E

**SECTION 3 - ECOLIFT 70 SN P900018975 TO PRESENT (INCLUDING
P900016888, P900016889, P900018150, P900018179, P900018237)**

FIGURE 3-6. DECALS INSTALLATION (ANSI SPECS)

ITEM	PART NUMBER	QTY	DESCRIPTION	REV
	1001251182	Ref	DECAL INSTALLATION - ECO 70	E
1	3820001	4	Rivet (Prior to SN P900014274)	
2	See Note	NSS	Nameplate - Manufacturers Serial Number (Note: Not Available for Purchase) (Prior to SN P900014274)	
3	1001269684	2	Decal - Model Ecolift 70 by JLG (SN P900006655 to Present)	
100	1001269682	1	Decal - Kit	
101	1701509	1	Decal - Manual	
102	1702391	1	Decal - Hand Crushing	
103	1703781	1	Decal - Electrical Hazard	
104	1703786	3	Decal - Crushing Hazard	
105	1703789	1	Decal - Level Indicator	
106	1703817	2	Decal - Fork Lift	
107	1706832	1	Decal - Danger Electrocutation	
108	1001131270	1	Decal - Patent	
109	1001212290	2	Decal - Tie Down	
110	1001213202	2	Decal - Tie Down and Lifting	
111	1001213205	4	Decal - Wheel Load	
112	1001213208	2	Decal - Caster Lock Direction	
113	1001213279	1	Decal - Capacity	
114	1001213442	2	Decal - Lifting and Tie Down	
115	1001213545	1	Decal - Warning, Crushing, Tipping, Hazard	
116	1001213582	1	Decal - Fall Restraint	
117	1001213997	1	Decal - Elevate Crank	
118	1001214125	1	Decal - Manual Descending	
119	1001215043	1	Decal - Warning Pressure	
120	1001223055	1	Decal - Yearly Inspection	
121	1001231801	1	Decal - Prop 65 Warning	
122	1001251158	1	Decal - Warning	

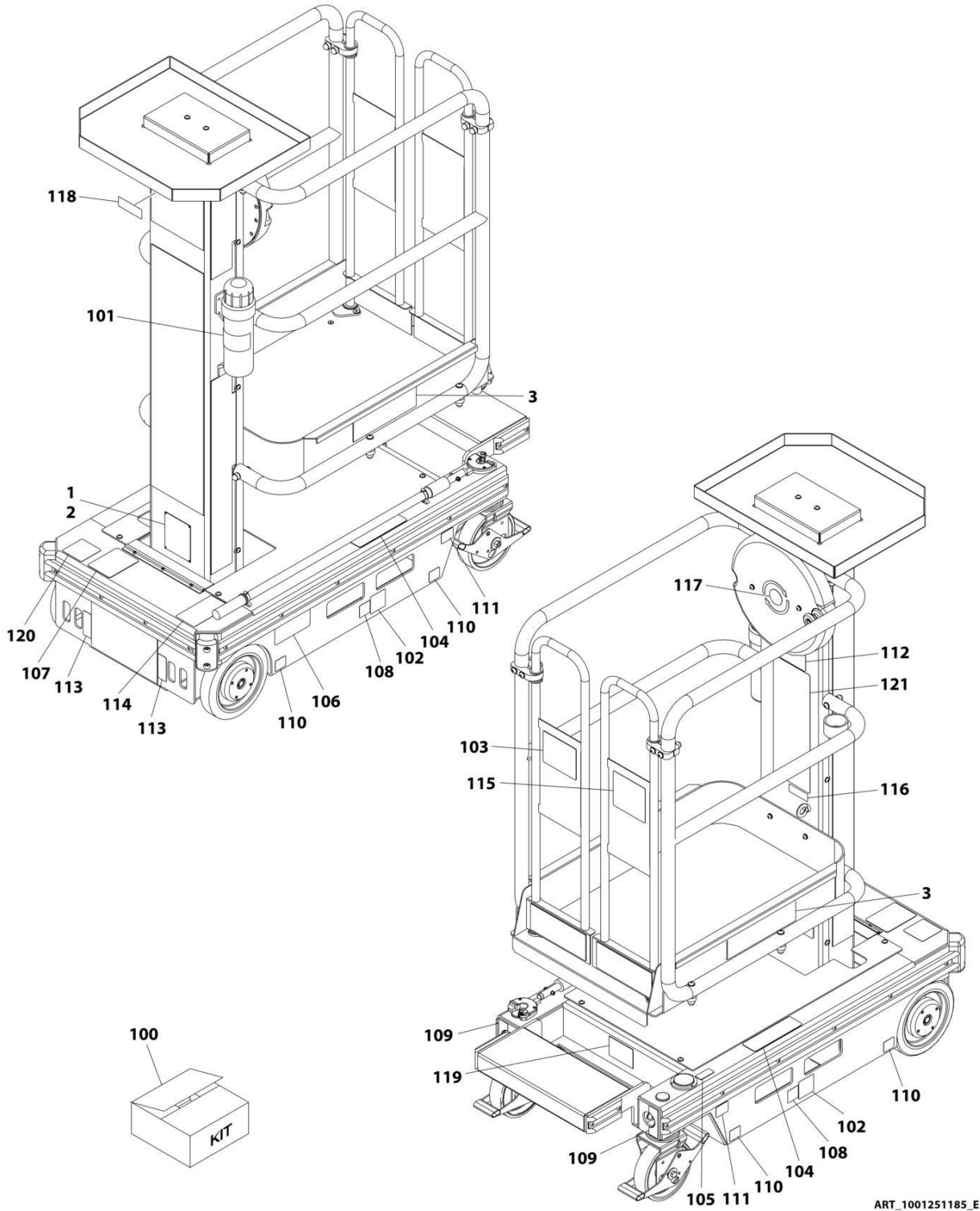
SECTION 3 - ECOLIFT 70 SN P900018975 TO PRESENT (INCLUDING P900016888, P900016889, P900018150,P900018179,P900018237)

FIGURE 3-7. DECALS INSTALLATION (ANSI SPECS)

ITEM	PART NUMBER	QTY	DESCRIPTION	REV
	1001291902	Ref	DECAL INSTALLATION - ECO 70	B
1	3820001	4	Rivet (Prior to SN P900014274)	
2	See Note	NSS	Nameplate - Manufacturers Serial Number (Note: Not Available for Purchase) (Prior to SN P900014274)	
3	1001269684	2	Decal - Model Ecolift 70 by JLG (SN P900006655 to Present)	
100	1001291898	1	Decal - Kit	
101	1701509	1	Decal - Manual	
102	1702391	1	Decal - Hand Crushing	
103	1703786	3	Decal - Crushing Hazard	
104	1703789	1	Decal - Level Indicator	
105	1703817	2	Decal - Fork Lift	
106	1706832	1	Decal - Danger Electrocution	
107	1001131270	1	Decal - Patent	
108	1001212290	2	Decal - Tie Down	
109	1001213202	2	Decal - Tie Down and Lifting	
110	1001213279	1	Decal - Capacity	
111	1001213442	2	Decal - Lifting and Tie Down	
112	1001213582	1	Decal - Fall Restraint	
113	1001213997	1	Decal - Elevate Crank	
114	1001215043	1	Decal - Warning Pressure	
115	1001223055	1	Decal - Yearly Inspection	
116	1001231801	1	Decal - Prop 65 Warning	
117	1001251158	1	Decal - Warning	
118	1001289252	2	Decal - Locking Castor	
119	1001291618	1	Decal - Manual Descending	
120	1001293693	1	Decal - Electrical Hazard	
121	1001293694	1	Decal - Warning/Crushing/Tipping	
122	1001298590	4	Decal - Wheel Load	
123	1001297095	2	Decal - Gate Removal	

SECTION 3 - ECOLIFT 70 SN P900018975 TO PRESENT (INCLUDING P900016888, P900016889, P900018150, P900018179, P900018237)

FIGURE 3-8. DECALS INSTALLATION (BRAZIL SPECS)



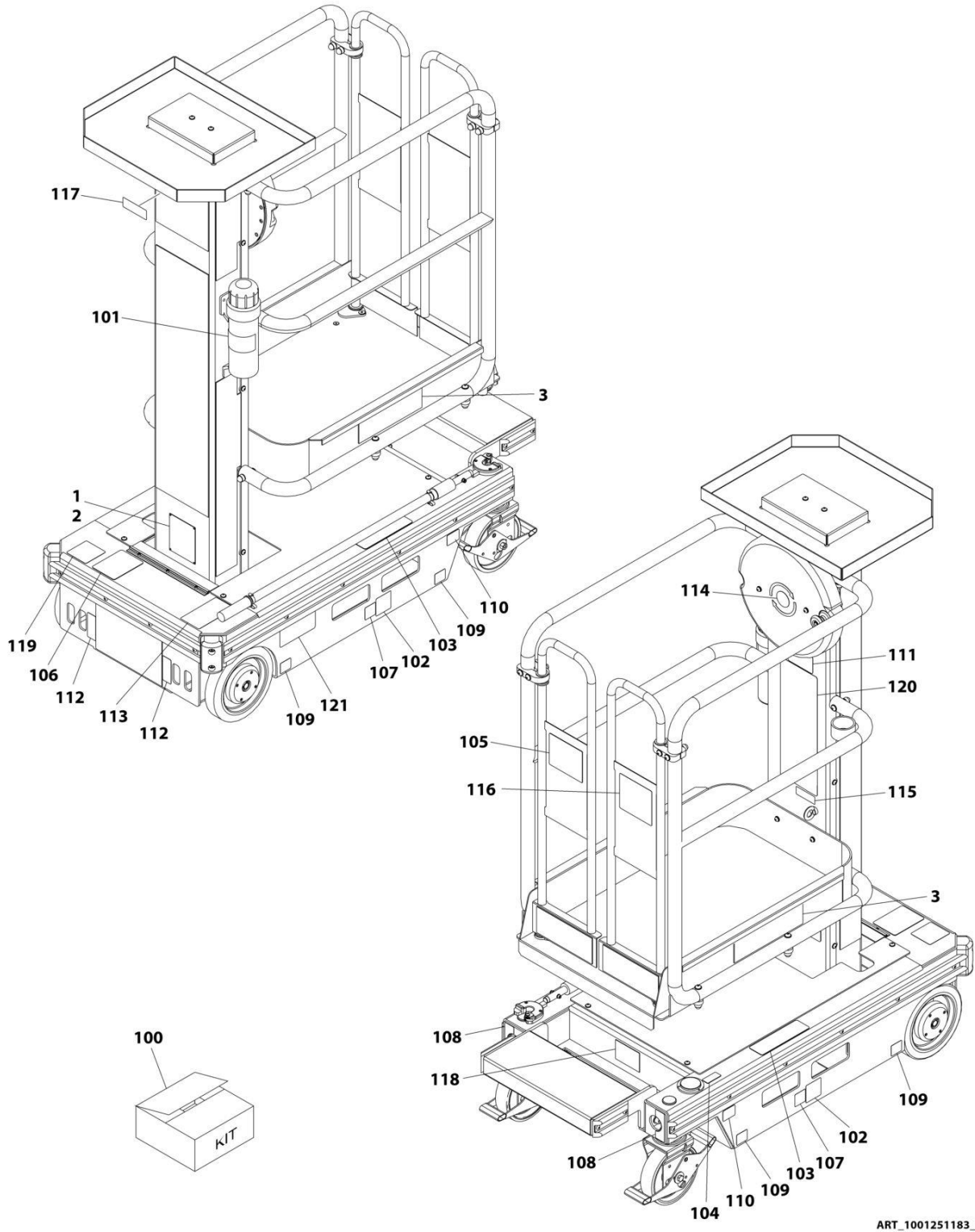
SECTION 3 - ECOLIFT 70 SN P900018975 TO PRESENT (INCLUDING P900016888, P900016889, P900018150, P900018179, P900018237)

FIGURE 3-8. DECALS INSTALLATION (BRAZIL SPECS)

ITEM	PART NUMBER	QTY	DESCRIPTION	REV
	1001251185	Ref	DECAL INSTALLATION - ECO 70	E
1	3820001	4	Rivet (Prior to SN P900014274)	
2	See Note	NSS	Nameplate - Manufacturers Serial Number (Note: Not Available for Purchase) (Prior to SN P900014274)	
3	1001269684	2	Decal - Model Ecolift 70 by JLG (SN P900006655 to Present)	
100	1001269683	1	Decal - Kit	
101	1701509	1	Decal - Manual	
102	1703817	2	Decal - Fork Lift	
103	1704021	1	Decal - Electrical Hazard	
104	1704024	3	Decal - Crushing Hazard	
105	1704026	1	Decal - Level Indicator	
106	1706833	1	Decal - Danger Electrocution	
107	1001131270	1	Decal - Patent	
108	1001212290	2	Decal - Tie Down	
109	1001213202	2	Decal - Tie Down and Lifting	
110	1001213205	4	Decal - Wheel Load	
111	1001213208	2	Decal - Caster Lock Direction	
112	1001213279	1	Decal - Capacity	
113	1001213442	2	Decal - Lifting and Tie Down	
114	1001214125	1	Decal - Manual Descending	
115	1001241801	1	Decal - Crushing and Tipping	
116	1001241802	1	Decal - Landyard Attachment	
117	1001241803	1	Decal - Elevate Crank	
118	1001241804	1	Decal - Warning Label	
119	1001241805	1	Decal - Hand Crushing	
120	1001245185	1	Decal - Yearly Inspection	
121	1001251161	1	Decal - Warning	

SECTION 3 - ECOLIFT 70 SN P900018975 TO PRESENT (INCLUDING P900016888, P900016889, P900018150, P900018179, P900018237)

FIGURE 3-9. DECALS INSTALLATION (CSA SPECS)



ART_1001251183_E

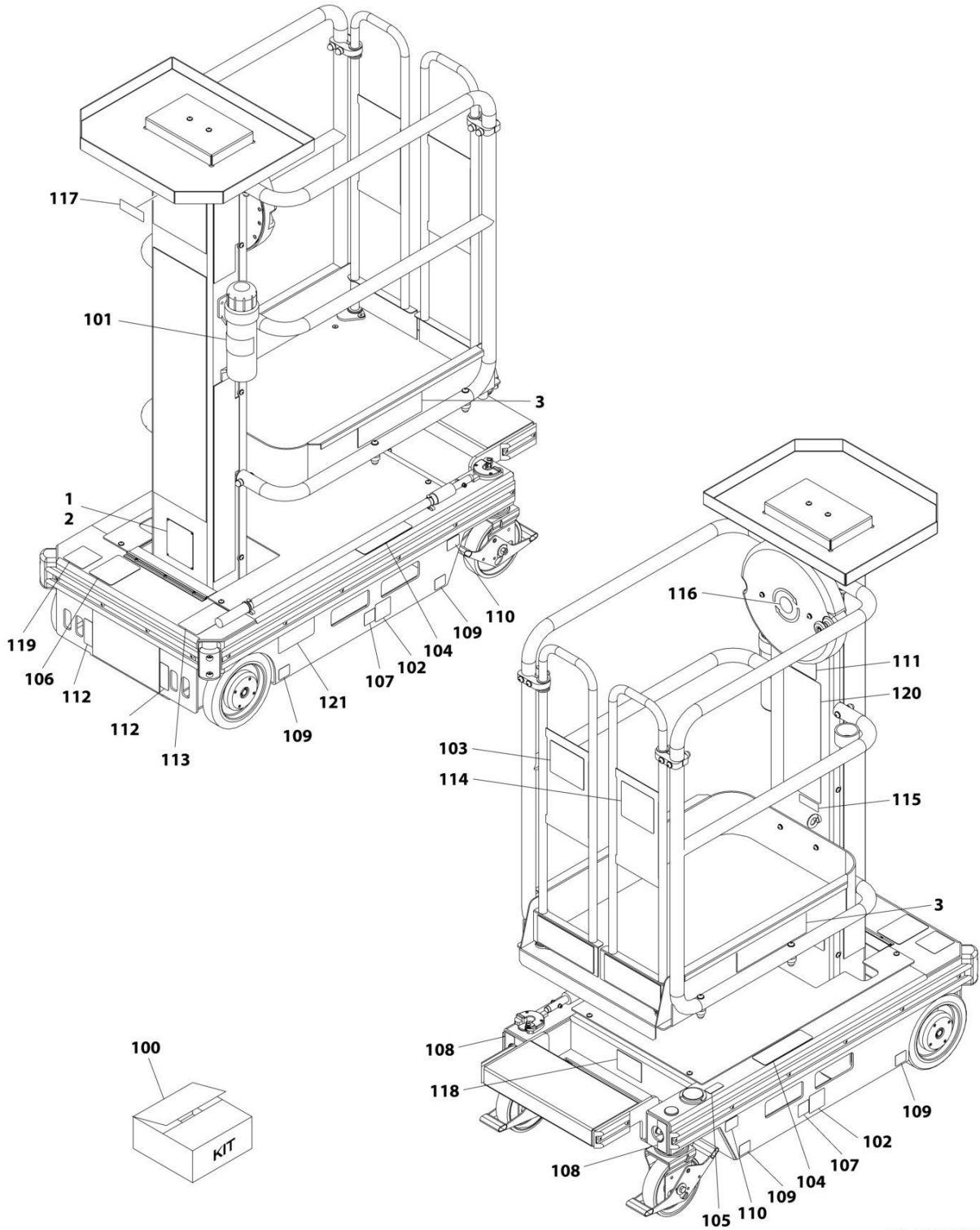
SECTION 3 - ECOLIFT 70 SN P900018975 TO PRESENT (INCLUDING P900016888, P900016889, P900018150,P900018179,P900018237)

FIGURE 3-9. DECALS INSTALLATION (CSA SPECS)

ITEM	PART NUMBER	QTY	DESCRIPTION	REV
	1001251183	Ref	DECAL INSTALLATION - ECO 70	E
1	3820001	4	Rivet (Prior to SN P900014274)	
2	See Note	NSS	Nameplate - Manufacturers Serial Number (Note: Not Available for Purchase) (Prior to SN P900014274)	
3	1001269684	2	Decal - Model Ecolift 70 by JLG (SN P900006655 to Present)	
100	1001285852	1	Decal - Kit	
101	1701509	1	Decal - Manual	
102	1703817	2	Decal - Fork Lift	
103	1704039	3	Decal - Crushing Hazard	
104	1704041	1	Decal - Level Indicator	
105	1704795	1	Decal - Electrical Hazard	
106	1001131270	1	Decal - Patent	
107	1001212290	2	Decal - Tie Down	
108	1001213202	2	Decal - Tie Down and Lifting	
109	1001213205	4	Decal - Wheel Load	
110	1001213208	2	Decal - Caster Lock Direction	
111	1001213279	1	Decal - Capacity	
112	1001213442	2	Decal - Lifting and Tie Down	
113	1001214125	1	Decal - Manual Descending	
114	1001215005	1	Decal - Elevate Direction	
115	1001215009	1	Decal - Landyard Fall Restrain	
116	1001215010	1	Decal - Warning Tipping	
117	1001215049	1	Decal - Warning Pressure	
118	1001215113	1	Decal - Warning Hand Crushing	
119	1001245181	1	Decal - Yearly Inspection	
120	1001251159	1	Decal - Warning	
121	1001256551	1	Decal - Danger Electrocuton	

SECTION 3 - ECOLIFT 70 SN P900018975 TO PRESENT (INCLUDING P900016888, P900016889, P900018150, P900018179, P900018237)

FIGURE 3-10. DECALS INSTALLATION (LATIN AMERICAN SPECS)



ART_1001251184_E

**SECTION 3 - ECOLIFT 70 SN P900018975 TO PRESENT (INCLUDING
P900016888, P900016889, P900018150, P900018179, P900018237)**

FIGURE 3-10. DECALS INSTALLATION (LATIN AMERICAN SPECS)

ITEM	PART NUMBER	QTY	DESCRIPTION	REV
	1001251184	Ref	DECAL INSTALLATION - ECO 70	E
1	3820001	4	Rivet (Prior to SN P900014274)	
2	See Note	NSS	Nameplate - Manufacturers Serial Number (Note: Not Available for Purchase) (Prior to SN P900014274)	
3	1001269684	2	Decal - Model Ecolift 70 by JLG (SN P900006655 to Present)	
100	1001285853	1	Decal - Kit	
101	1701509	1	Decal - Manual	
102	1703817	2	Decal - Fork Lift	
103	1704029	1	Decal - Electrical Hazard	
104	1704032	3	Decal - Crushing Hazard	
105	1704034	1	Decal - Level Indicator	
106	1001131270	1	Decal - Patent	
107	1001212290	2	Decal - Tie Down	
108	1001213202	2	Decal - Tie Down and Lifting	
109	1001213205	4	Decal - Wheel Load	
110	1001213208	2	Decal - Caster Lock Direction	
111	1001213279	1	Decal - Capacity	
112	1001213442	2	Decal - Lifting and Tie Down	
113	1001214125	1	Decal - Manual Descending	
114	1001241791	1	Decal - Crushing and Tipping	
115	1001241792	1	Decal - Landyard Attachment	
116	1001241793	1	Decal - Elevate Crank	
117	1001241794	1	Decal - Warning Label	
118	1001241795	1	Decal - Hand Crushing	
119	1001245183	1	Decal - Yearly Inspection	
120	1001251160	1	Decal - Warning	
121	1001256552	1	Decal - Danger Electrocuton	

SECTION 3 - ECOLIFT 70 SN P900018975 TO PRESENT (INCLUDING P900016888, P900016889, P900018150,P900018179,P900018237)

FIGURE 3-11. RECOMMENDED SERVICE PARTS STOCK

ITEM	PART NUMBER	QTY	DESCRIPTION	REV
		Ref	Note: The following list will service one machine (built to current production per date on the front cover) with emergency repair parts which can be installed in the field. Parts from the list should be replaced when inventory is depleted to keep service parts stock supplied. For further information, contact your JLG dealer or the JLG Industries Parts Department.	
	ECLM703	1	Emergency Lowering Tool	
	1001269636	1	Handle, Gate Lock (Platform with Locking Gate)	

SECTION 3 - ECOLIFT 70 SN P900018975 TO PRESENT (INCLUDING P900016888, P900016889, P900018150,P900018179,P900018237)

FIGURE 3-12. SPECIAL OPTIONS/ACCESSORIES/KITS

ITEM	PART NUMBER	QTY	DESCRIPTION	REV
		Ref	Note: This list is to accommodate machines ordered with special equipment. Options may not be applicable to all models. For more specific parts information contact JLG Parts Department.	
	PELM500	Ref	MISCELLANEOUS SPECIAL OPTIONS	
		Ref	Cylinder Pressurizing Kit (Includes Hose, Gauges, fittings & Flow Valve)	
	1001298295	Ref	Handle Tip Kit	
	1001256697	Ref	Service Kits & Tools (Prior to SN P900018962)	F
	1001249640	Ref	Static Strap Kit (SN P900018962 to Present)	
	1001302745	Ref	Static Strap Kit	

**SECTION 3 - ECOLIFT 70 SN P900018975 TO PRESENT (INCLUDING
P900016888, P900016889, P900018150,P900018179,P900018237)**

PART NUMBER INDEX

SECTION 3 - ECOLIFT 70 SN P900018975 TO PRESENT (INCLUDING P900016888, P900016889, P900018150,P900018179,P900018237)

1001131270....57, 59, 61, 63, 85, 86, 89, 91, 93	1001249640 36, 66, 96	1001265507 ... 15, 23, 25, 43, 51, 53, 73	1001266260..... 19, 47, 77
1001212290....57, 59, 61, 63, 85, 86, 89, 91, 93	1001251158 57, 85, 86	1001265508 ... 11, 19, 39, 47, 69, 77, 81	1001266261..... 19, 47, 77
1001213185.....27	1001251159 61, 91	1001265511 74	1001266262..... 19, 47, 77
1001213202....27, 29, 31, 33, 57, 59, 61, 63, 85, 86, 89, 91, 93	1001251160 63, 93	1001265512 11, 39, 69	1001266264..... 19, 47, 77
1001213205....27, 29, 31, 33, 57, 59, 61, 63, 85, 89, 91, 93	1001251161 59, 89	1001265514 15, 43	1001266265..... 19, 47, 77
1001213208....27, 29, 31, 33, 57, 59, 61, 63, 85, 89, 91, 93	1001251182 57, 85	1001265642 11, 39, 69	1001266273..... 19, 47, 77
1001213279....27, 29, 31, 33, 57, 59, 61, 63, 85, 86, 89, 91, 93	1001251183 61, 91	1001265746 ... 11, 15, 39, 43, 69, 73	1001266274..... 19, 47, 77
1001213367.....27	1001251184 63, 93	1001265750 11, 39	1001266275..... 19, 47, 77
1001213442....27, 29, 31, 33, 57, 59, 61, 63, 85, 86, 89, 91, 93	1001251185 59, 89	1001265991 11, 39, 69	1001266412..... 11, 39, 69
1001213545.....27, 57, 85	1001256551 61, 91	1001266100 15, 43, 73	1001266413..... 19, 47, 77
1001213549....27, 29, 31, 33	1001256552 63, 93	1001266101 ... 15, 25, 43, 53, 73	1001266414....23, 25, 51, 53
1001213582....27, 57, 85, 86	1001256697 36, 66, 96	1001266105 11, 39, 69	1001266415..... 11, 39
100121399727, 57, 85, 86	1001256698 55, 83	1001266107 ... 15, 19, 25, 43, 47, 53, 73, 77	1001266418..... 11, 39, 73
1001214108....27, 29, 31, 33	1001264556 ... 11, 39, 69, 73	1001266108 ... 11, 19, 39, 47, 69, 77	1001266419....23, 25, 51, 53
1001214109....27, 29, 31, 33	1001264557 ... 11, 15, 19, 39, 43, 47, 69, 73, 77, 81	1001266109 15, 43, 73	1001266420....23, 25, 51, 53
1001214125....27, 29, 31, 33, 57, 59, 61, 63, 85, 89, 91, 93	1001264558 ... 15, 19, 43, 47, 55, 73, 77, 83	1001266110 15, 43, 73	1001266421..... 11, 39
1001215005.....29, 61, 91	1001264559 19, 47, 77	1001266112 11, 39, 69	1001266422..... 11, 39, 69
1001215007.....29	1001264707 ... 19, 47, 77, 81	1001266113 11, 39, 69	1001266424..... 11, 39, 69
1001215009.....29, 61, 91	1001265092 81	1001266114 ... 11, 15, 39, 43, 69, 73	1001266425..... 11, 39, 69
1001215010.....29, 61, 91	1001265112 ... 11, 15, 19, 39, 43, 47, 69, 73, 77, 81	1001266115 15, 43	1001266426..... 15, 43, 73
1001215012.....29	1001265113 ... 11, 15, 19, 23, 25, 39, 43, 47, 51, 53, 69, 77, 81	1001266117 19, 47, 77	1001266427..... 15, 43, 73
1001215043....27, 57, 85, 86	1001265114 ... 15, 23, 25, 43, 51, 53, 73	1001266119 ... 23, 25, 51, 53	1001266428..... 11, 39, 73
1001215049.....29, 61, 91	1001265115 ... 11, 15, 19, 23, 25, 39, 43, 47, 51, 53, 69, 77, 81	1001266120 ... 23, 25, 51, 53	1001266429..... 11, 39, 73
1001215113.....29, 61, 91	1001265116 ... 11, 19, 39, 47, 69, 77	1001266121 15, 43, 73	1001266430..... 11, 39, 73
1001223055.....57, 85, 86	1001265117 ... 23, 25, 51, 53	1001266122 11, 39, 69	1001266431..... 11, 39, 73
1001231801....27, 57, 85, 86	1001265121 ... 11, 15, 19, 39, 43, 47, 55, 69, 73, 77, 83	1001266123 19, 47, 77	1001266433..... 11, 39, 73
1001241785.....33	1001265124 11, 39, 69	1001266124 19, 47, 77	1001266434..... 19, 47, 77
100124178731	1001265127 11, 39, 73	1001266126 19, 47, 77	1001266435....23, 25, 51, 53
1001241790.....33	1001265131 15, 43, 73	1001266127 15, 43, 73	1001266438..... 11, 39, 73
100124179133, 63, 93	1001265133 11, 39, 69	1001266128 15, 43, 73	1001266439..... 19, 47, 77
1001241792.....33, 63, 93	1001265134 ... 11, 15, 23, 25, 39, 43, 51, 53, 73	1001266129 ... 23, 25, 51, 53	1001266536.....81
1001241793.....33, 63, 93	1001265135 ... 11, 15, 19, 23, 25, 39, 43, 47, 51, 53, 69, 73, 77, 81	1001266130 19, 47, 77	1001266544.....74
1001241794.....33, 63, 93	1001265136 ... 11, 19, 23, 25, 39, 47, 51, 53, 69, 77	1001266131 11, 39, 69	1001266614.... 11, 23, 25, 39, 51, 53, 69
1001241795.....33, 63, 93	1001265138 ... 15, 19, 25, 43, 47, 53, 73, 77	1001266132 19, 47, 77	1001267378..... 11, 40, 73
1001241800.....31	1001265139 11, 39, 69	1001266133 19, 47, 77	1001267382..... 15, 43, 73
100124180131, 59, 89	1001265147 11, 39, 69	1001266137 ... 15, 23, 43, 51, 73	1001267383..... 15, 43, 73
100124180231, 59, 89	1001265149 15, 43, 73	1001266138 19, 47, 77	1001267384..... 12, 40, 69
1001241803.....31, 59, 89	1001265461 11, 39, 69	1001266139 15, 43, 73	1001269636....25, 34, 53, 64, 94
1001241804.....31, 59, 89	1001265462 ... 11, 15, 19, 39, 43, 47, 69, 73, 77	1001266144 15, 43, 73	1001269638.....25, 53
1001241805.....31, 59, 89	1001265496 ... 15, 19, 43, 47, 73, 77	1001266145 15, 43, 73	1001269639.....25, 53
100124518161, 91	1001265506 15, 43, 73	1001266146 19, 47, 77	1001269641.....25, 53
1001245183.....63, 93		1001266210 19, 47, 77	1001269642.....25, 53
1001245185.....59, 89		1001266211 15, 43, 73	1001269643.....25, 53
1001249314.....55, 83		1001266216 81	1001269644.....25, 53
		1001266219 19, 47, 77	1001269682.....57, 85
		1001266244 11, 39, 69	1001269683.....59, 89
		1001266245 19, 47, 77	1001269684....57, 59, 61, 63, 85, 86, 89, 91, 93
		1001266246 11, 39, 69	1001269694.....25, 53
		1001266247 ... 11, 39, 69, 73	1001269695.....25, 53
		1001266254 15, 43, 73	1001277964.....70
		1001266255 15, 43, 73	1001279106.....51, 53
		1001266257 19, 47, 77	1001279107.....51, 53
		1001266258 19, 47, 77	1001285852.....61, 91
		1001266259 15, 43, 73	1001285853.....63, 93
			1001288248.....81

**SECTION 3 - ECOLIFT 70 SN P900018975 TO PRESENT (INCLUDING
P900016888, P900016889, P900018150, P900018179, P900018237)**

1001288253	81	1702391	27, 57, 85, 86	ECLM428.....	15, 43, 74	PELM442	19, 48, 78
1001288254	81	1703781	27, 57, 85	ECLM431.....	19, 47, 77	PELM451	12, 40
1001288689	81	1703786	27, 57, 85, 86	ECLM434.....	15, 43, 74	PELM462	19, 48, 78
1001288690	81	1703789	27, 57, 85, 86	ECLM600.....	12, 40, 69	PELM467	20, 48, 78
1001289040	70	1703817 ...	27, 29, 31, 33, 57, 59, 61, 63, 85, 86, 89, 91, 93	ECLM601.....	15, 43, 74	PELM469	20, 48, 78
1001289242	81			ECLM602.....	12, 40, 69	PELM471	20, 48, 78
1001289252	86			ECLM603.....	15, 43, 74	PELM472	20, 48, 78
1001290778	81	1704021	31, 59, 89	ECLM604.....	12, 40, 69	PELM475	16, 44, 74
1001290784	81	1704024	31, 59, 89	ECLM605.....	12, 40, 69	PELM478	16, 44, 74
1001290785	81	1704026	31, 59, 89	ECLM606.....	12, 40, 69	PELM480	20, 48, 78
1001290877	74	1704029	33, 63, 93	ECLM608.....	12, 40, 69	PELM481	16, 44, 74
1001290878	74	1704032	33, 63, 93	ECLM609...23,	25, 51, 53	PELM482	16, 44, 74
1001291210	74	1704034	33, 63, 93	ECLM610.....	12, 40, 69	PELM483 .	20, 25, 48, 53, 78
1001291618	86	1704039	29, 61, 91	ECLM611.....	12, 40, 69	PELM484	20, 48, 78
1001291898	86	1704041	29, 61, 91	ECLM612...23,	25, 51, 53	PELM485	16, 44, 74
1001291902	86	1704795	29, 61, 91	ECLM613.....	23, 25	PELM488	20, 48, 78
1001293031	81	1706351	27, 29	ECLM614.....	12, 40, 70	PELM489	16, 44
1001293032	81	1706832	57, 85, 86	ECLM615.....	15, 43, 74	PELM494	16, 44, 74
1001293693	86	1706833	59, 89	ECLM621.....	12, 40, 70	PELM495	16, 44, 74
1001293694	86	3820001 ...	27, 29, 31, 33, 57, 59, 61, 63, 85, 86, 89, 91, 93	ECLM622.....	12, 40, 70	PELM496	20, 48, 78
1001297095	86			ECLM623...23,	25, 51, 53	PELM498	16, 44, 74
1001298295	36, 66, 96			ECLM701.....	12, 40	PELM499	20, 48, 78
1001298590	86	ECLM412	19, 47, 77	ECLM702.....	15, 44, 74	PELM500	36, 66, 96
1001301614	81	ECLM413 ..	23, 25, 51, 53	ECLM703.....	34, 64, 94	PELM506	20, 48, 78
1001301615	81	ECLM414	12, 40	ECLM704...23,	25, 51, 53	PTM102	12, 40
1001301616	81	ECLM416	15, 43	ECLM705...23,	25, 51, 53	PTM106	70
1001301617	81	ECLM417	19, 47, 77	ECLM706...23,	25, 51, 53	PTM149	20, 48, 78
1001301618	81	ECLM418	19, 47, 77	ECLM708.....	15, 44, 74	PTM163	12, 40, 70
1001301625	81	ECLM419	15, 43, 73	ECLM709...23,	25, 51, 53	PTNSPM560 ..	23, 25, 51, 53
1001302219	81	ECLM420	12, 40, 69	ECLM710...23,	25, 51, 53	PTNSPM562 ...	16, 44, 74
1001302220	81	ECLM421	19, 47, 77	PELM412.....	19, 47, 77	PTNSPM664 ...	16, 44, 74
1001302745	36, 66, 96	ECLM422	12, 40, 69	PELM414.....	12, 40, 70		
1701509 ...	27, 29, 31, 33, 57, 59, 61, 63, 85, 86, 89, 91, 93	ECLM423	12, 40, 69	PELM421	16, 44, 74		
		ECLM425 ..	23, 25, 51, 53	PELM429	19, 47, 77		
		ECLM426	15, 43, 74	PELM430.....	81		



**Corporate Office
JLG Industries, Inc.
1 JLG Drive
McConnellsburg, PA 17233-9533 USA
☎ (717) 485-5161 (Corporate)
☎ (877) 554-5438 (Customer Support)
📠 (717) 485-6417**

**Visit our website for JLG Worldwide Locations.
www.jlg.com**



OSHKOSH™