



Illustrated Parts Manual

Model Power Tower

SN 1052607S to 1983907S
SN 1383407A to 9993609A
SN 10003609A to 56942122A
SN P90000511 to P900014858

P/N

31220661

June 15, 2024 - Rev B

CE
UK
CA

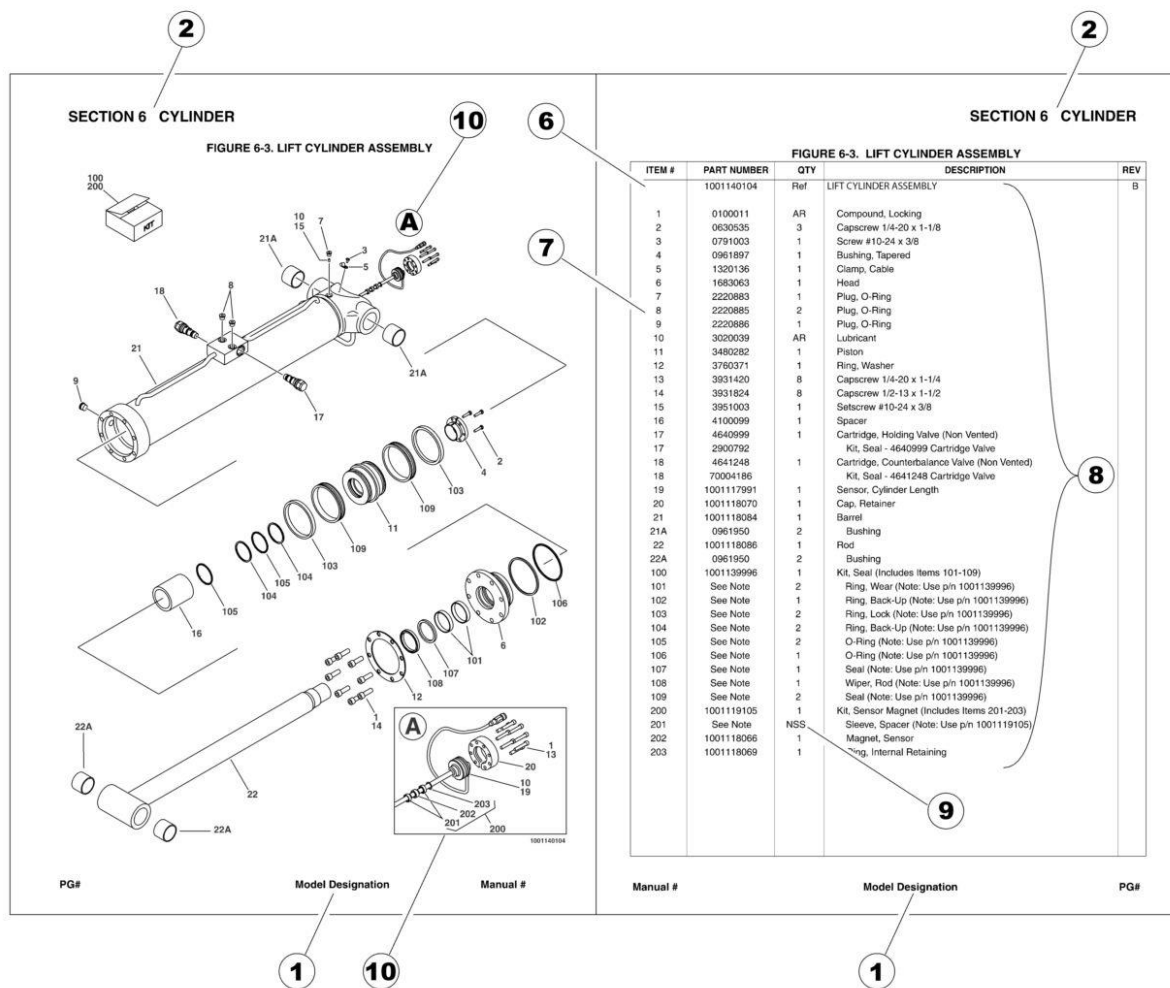


An Oshkosh Corporation Company

REVISION LOG

April 28, 2022 - A - Original Release of Manual
June 15, 2024 - B - Revised Manual

GENERAL INFORMATION



1) MACHINE IDENTIFICATION

Machines are identified by model and in some cases a combination of models, serial number (SN) or regional standard (i.e ANSI, CE, CSA). Components may also be identified by SN or manufacturer. Common components that may be identified by these characteristics are engines and hydraulic components.

2) PARTS MANUAL ORGANIZATION

Product information in this manual is organized under section titles. Frame, Cylinder, Hydraulic and Electrical are a few examples. Each section is organized by figure and page number. The information within the Figure is then organized by item number, part number, description and corresponding illustration (s).

3) TABLE OF CONTENTS (NOT SHOWN)

A table of contents is found toward the beginning of the manual. Figure number, description and page number are provided for quick reference to the page containing the related information.

4) RECOMMENDED SPARE PARTS (NOT SHOWN)

The Recommended Spare Parts List, located near the end of the manual, reference most frequently used maintenance parts.

5) PART NUMBER INDEX (NOT SHOWN)

A numerical index listing all part numbers and the corresponding page number(s) appears at the back of the manual.

GENERAL INFORMATION

6) NON-SERVICED PARTS

In some instances, it is necessary to display non-serviced parts, assemblies or installations. In the case of assemblies and installations there will be a Ref in the Qty. column. In case of parts that are not available for service within assemblies or components, there will be a NSS (Not Sold Separately) or NLA (No Longer Available) listed in the Qty. column of the manual.

7) PARTS LIST ITEM NUMBERS

Numbers shown in the item# column correspond to numbers used in the associated illustration (s). Item numbers which are missing from the sequence in the parts list are not used on that page.

8) INDENTED PARTS DESCRIPTION

An indented part description is included in the item under which it is indented.

9) ABBREVIATION AND SYMBOLS

| | | | |
|-------------|--|--------------|---------------------------------|
| AC..... | Alternating Current | L..... | Liter |
| ADE..... | Advanced Design Electronics | LB(LBS)..... | Pounds |
| AG..... | Agricultural | LCD..... | Liquid Crystal Display |
| ANSI..... | American National Standards Institute | LED..... | Light Emitting Diodes |
| AR..... | As Required | LH..... | Left Hand |
| ASSY..... | Assembly | LRC..... | Low Rated Countries |
| AUS..... | Australia | LSS..... | Load Sensing System |
| AUX..... | Auxiliary | M(m)..... | Metric/Meter |
| AWG..... | American Wire Gauge | MM(mm)..... | Milimeter |
| B/M..... | Bill of Material | mA..... | Miliamps |
| CAC..... | Charge Air Cooler | NLA..... | No Longer Available |
| CE..... | European Conformity | NPT..... | National Pipe Threads |
| CCW..... | Counter Clockwise | NSS..... | Not Sold Separately |
| CM..... | Centimeter | OD..... | Outside Diameter |
| CW..... | Clockwise | ORB..... | O-Ring Boss |
| CSA..... | Canadian Standards Association | ORFS..... | O-Ring Face Seal |
| CYL..... | Cylinder | OZ (oz)..... | Ounces |
| DIA..... | Diameter | PG..... | Page |
| DC..... | Direct Current | PN..... | Part Number |
| DEF..... | Diesel Exhaust Fluid | QT(qt.)..... | Quarts |
| EMS..... | Emergency Stop | QTY..... | Quantity |
| ENG..... | Engine | REF..... | Reference |
| FT(ft)..... | Feet | REV..... | Revision Level |
| GA(Ga)..... | Gauge | RH..... | Right Hand |
| HRC..... | High Rated Countries | SAE..... | Society of Automotive Engineers |
| HVAC..... | Heating, Ventilating, and Air Conditioning | SN..... | Serial Number |
| HYD..... | Hydraulic | SPEC(S)..... | Specifications |
| Hz..... | Hertz | T/T..... | Turntable |
| ID..... | Inside Diameter | UGM..... | Universal Ground Module |
| IN..... | inches | V..... | Volts |
| ISO..... | International Organization for Standards | W..... | Watts |
| JIC..... | Joint Industry Council | #..... | Number |
| KG..... | Kilogram | | |

10) ILLUSTRATION REFERENCE LETTERS

When necessary, illustrations may contain reference letters that are intended to track information (i. e. hoses, harnesses) from one point to another or to track visual enlargement of components to show details that may be located in another area on the illustration.

Note: Due to continuous product improvements, JLG Industries, Inc. reserves the right to make specification changes without prior notification. Contact JLG Industries, Inc. for updated information.

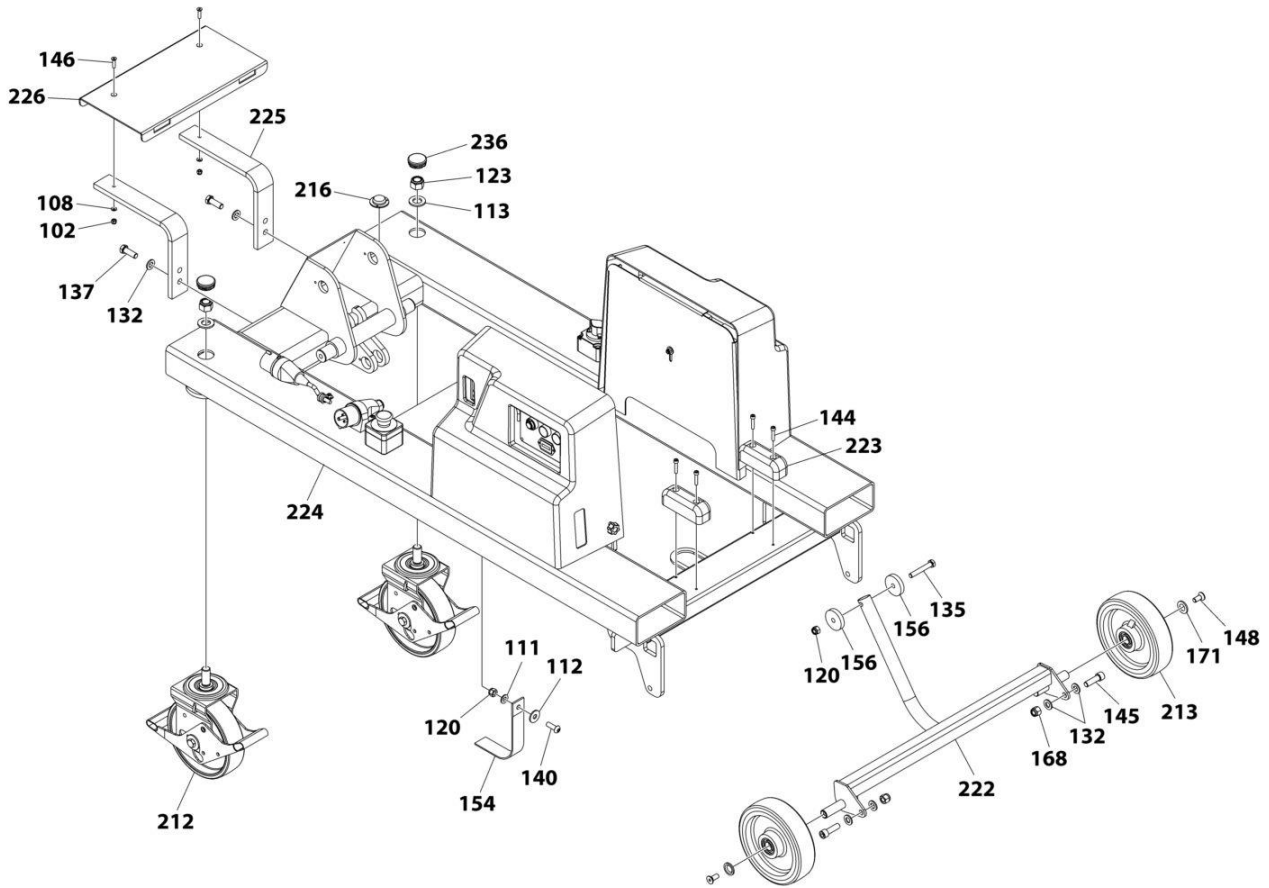
TABLE OF CONTENTS

| | |
|--|----|
| SECTION 1 - MACHINE COMPONENTS | 9 |
| FIGURE 1-1. FRAME ASSEMBLY | 10 |
| FIGURE 1-2. BOOM ASSEMBLY | 12 |
| FIGURE 1-3. PLATFORM ASSEMBLY | 14 |
| FIGURE 1-4. COVERS AND CONTROLS INSTALLATION | 16 |
| FIGURE 1-5. ELECTRICAL COMPONENTS INSTALLATION | 18 |
| FIGURE 1-6. CYLINDER ASSEMBLY - LIFT | 20 |
| SECTION 2 - DECALS | 23 |
| FIGURE 2-1. DECAL INSTALLATION | 24 |
| SECTION 3 - SPECIAL OPTIONS | 27 |
| FIGURE 3-1. SPECIAL OPTIONS/ACCESSORIES/KITS | 28 |
| PART NUMBER INDEX | 29 |

SECTION 1 - MACHINE COMPONENTS

SECTION 1 - MACHINE COMPONENTS

FIGURE 1-1. FRAME ASSEMBLY



ART_1001217474_1OF7

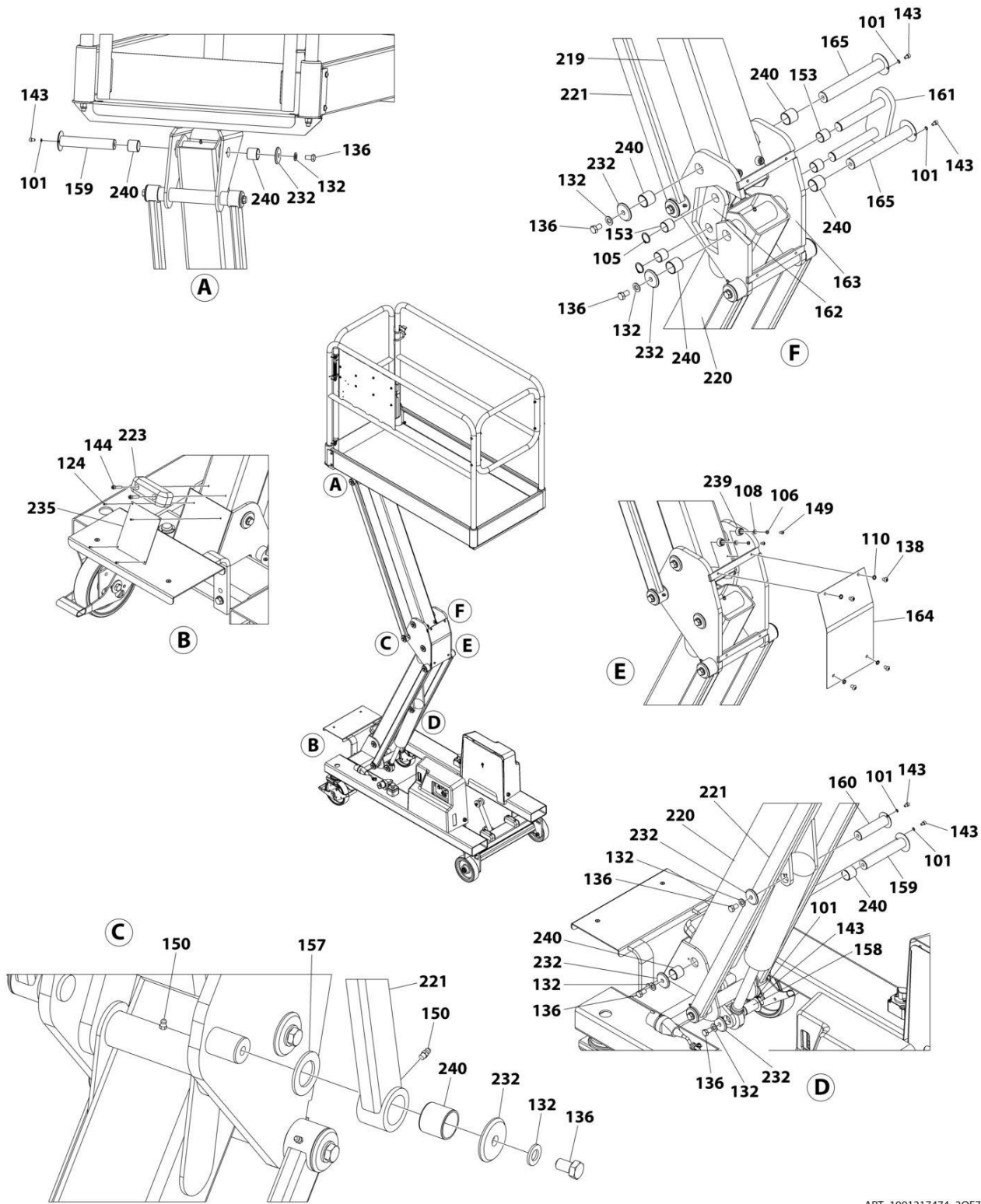
SECTION 1 - MACHINE COMPONENTS

FIGURE 1-1. FRAME ASSEMBLY

| ITEM | PART NUMBER | QTY | DESCRIPTION | REV |
|------|-------------|-----|---------------------|-----|
| | 1001217474 | Ref | FRAME ASSEMBLY | E |
| 102 | 1001264557 | 2 | Nut M6 | |
| 108 | 1001265112 | 2 | Washer M6 | |
| 111 | 1001265115 | 1 | Washer M10 | |
| 112 | 1001265116 | 1 | Washer M10 | |
| 113 | 1001265118 | 2 | Washer 3/4 | |
| 120 | 1001265136 | 2 | Nut M10 | |
| 123 | 1001265147 | 2 | Nut 3/4 | |
| 132 | 1001265462 | 6 | Washer M12 | |
| 135 | 1001265499 | 1 | Bolt M10 x 65 | |
| 137 | 1001265501 | 2 | Bolt M12 x 35 | |
| 140 | 1001265508 | 1 | Bolt M10 x 30 | |
| 144 | 1001265512 | 4 | Bolt M6 x 30 | |
| 145 | 1001265513 | 2 | Bolt M12 x 40 | |
| 146 | 1001265514 | 2 | Bolt M6 x 25 | |
| 148 | 1001265516 | 2 | Bolt M10 x 25 | |
| 154 | 1001265642 | 1 | Cable | |
| 156 | 1001265649 | 2 | Wheel | |
| 168 | 1001265746 | 2 | Nut M12 | |
| 171 | 1001265897 | 2 | Washer, Countersink | |
| 212 | PTM1022 | 2 | Castor, Swivel | |
| 213 | PTM103 | 2 | Castor, Fixed | |
| 216 | PTM106 | 1 | Level | |
| 222 | PTM124 | 1 | Brake Axle Assembly | |
| 223 | PTM126 | 2 | Pad, Rest | |
| 224 | PTM127 | 1 | Chassis | |
| 225 | PTM128B | 2 | Bracket, Step Plate | |
| 226 | PTM129B | 1 | Plate, Step | |
| 236 | PTM163 | 2 | Insert, Chassis | |

SECTION 1 - MACHINE COMPONENTS

FIGURE 1-2. BOOM ASSEMBLY



ART_1001217474_20F7

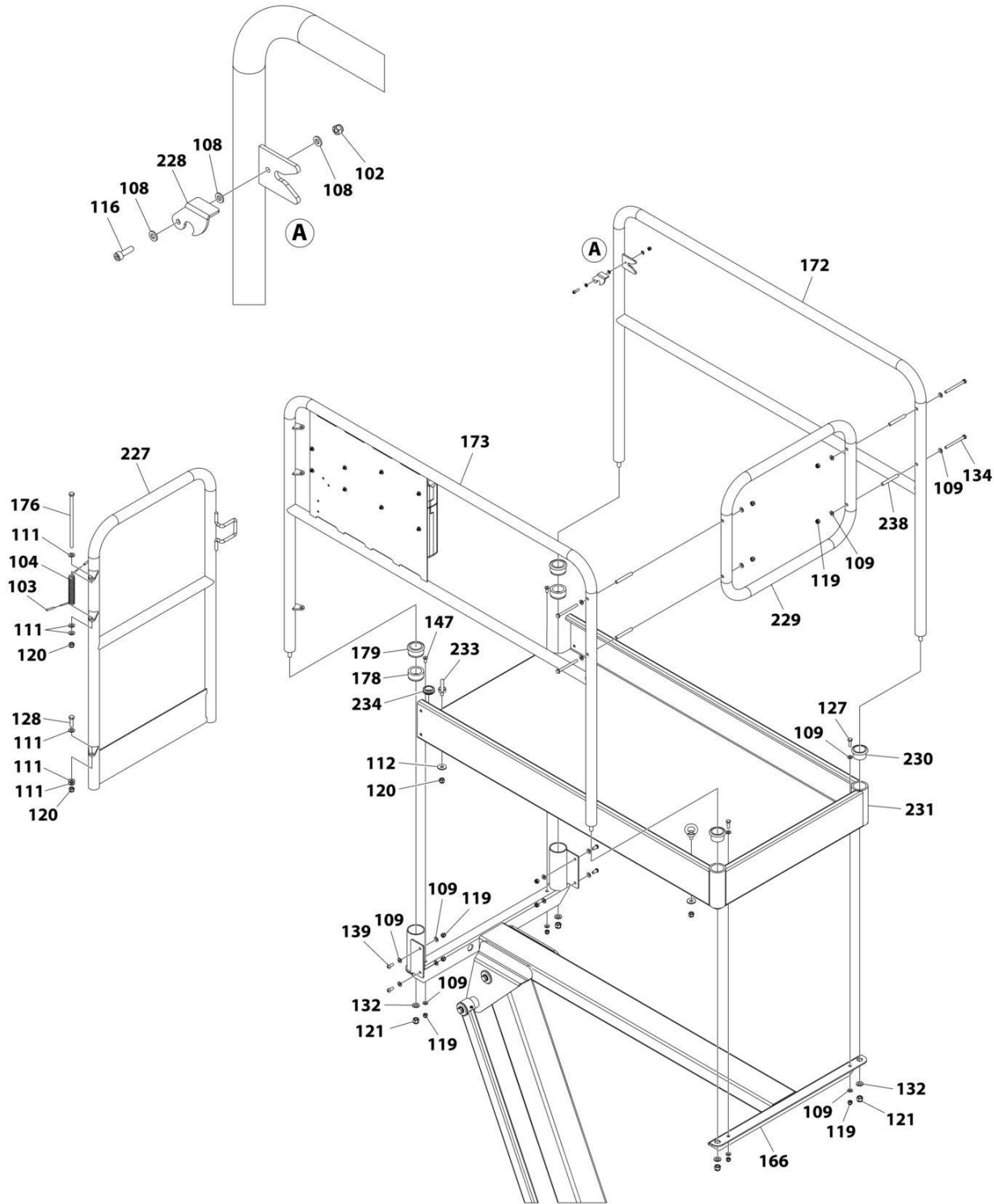
SECTION 1 - MACHINE COMPONENTS

FIGURE 1-2. BOOM ASSEMBLY

| ITEM | PART NUMBER | QTY | DESCRIPTION | REV |
|------|-------------|-----|-----------------------|-----|
| | 1001217474 | Ref | BOOM ASSEMBLY | E |
| 101 | 1001264555 | 6 | Washer M6 | |
| 105 | 1001265108 | 2 | Clip | |
| 106 | 1001265110 | 2 | Washer M5 | |
| 108 | 1001265112 | 2 | Washer M6 | |
| 110 | 1001265114 | 4 | Washer M8 | |
| 124 | 1001265149 | 4 | Rivet | |
| 132 | 1001265462 | 7 | Washer M12 | |
| 136 | 1001265500 | 7 | Bolt M12 x 20 | |
| 138 | 1001265506 | 4 | Bolt M8 x 12 | |
| 143 | 1001265511 | 6 | Bolt M6 x 10 | |
| 144 | 1001265512 | 2 | Bolt M6 x 30 | |
| 149 | 1001265517 | 2 | Bolt M5 x 12 | |
| 150 | 1001265518 | 2 | Fitting, Grease | |
| 153 | 1001265641 | 4 | Bushing | |
| 157 | 1001265661 | 1 | Spacer | |
| 158 | 1001265662 | 1 | Pin, Chassis Cylinder | |
| 159 | 1001265663 | 2 | Pin, Boom | |
| 160 | 1001265664 | 1 | Pin, Boom Cylinder | |
| 161 | 1001265665 | 1 | Link | |
| 162 | 1001265666 | 1 | Plate, Link | |
| 163 | 1001265667 | 1 | Knuckle | |
| 164 | 1001265668 | 1 | Plate, Knuckle Cover | |
| 165 | 1001265669 | 2 | Pin, Knuckle | |
| 219 | PTM113 | 1 | Upper Boom Assembly | |
| 220 | PTM116 | 2 | Lower Boom Assembly | |
| 221 | PTM117 | 3 | Tie Bar Assembly | |
| 223 | PTM126 | 1 | Pad, Rest | |
| 232 | PTM148 | 7 | Washer | |
| 235 | PTM1522 | 1 | Plate | |
| 239 | PTM2028 | 2 | Buffer, Rubber | |
| 240 | PTM3030 | 9 | Bushing | |

SECTION 1 - MACHINE COMPONENTS

FIGURE 1-3. PLATFORM ASSEMBLY



ART_1001217474_30F7

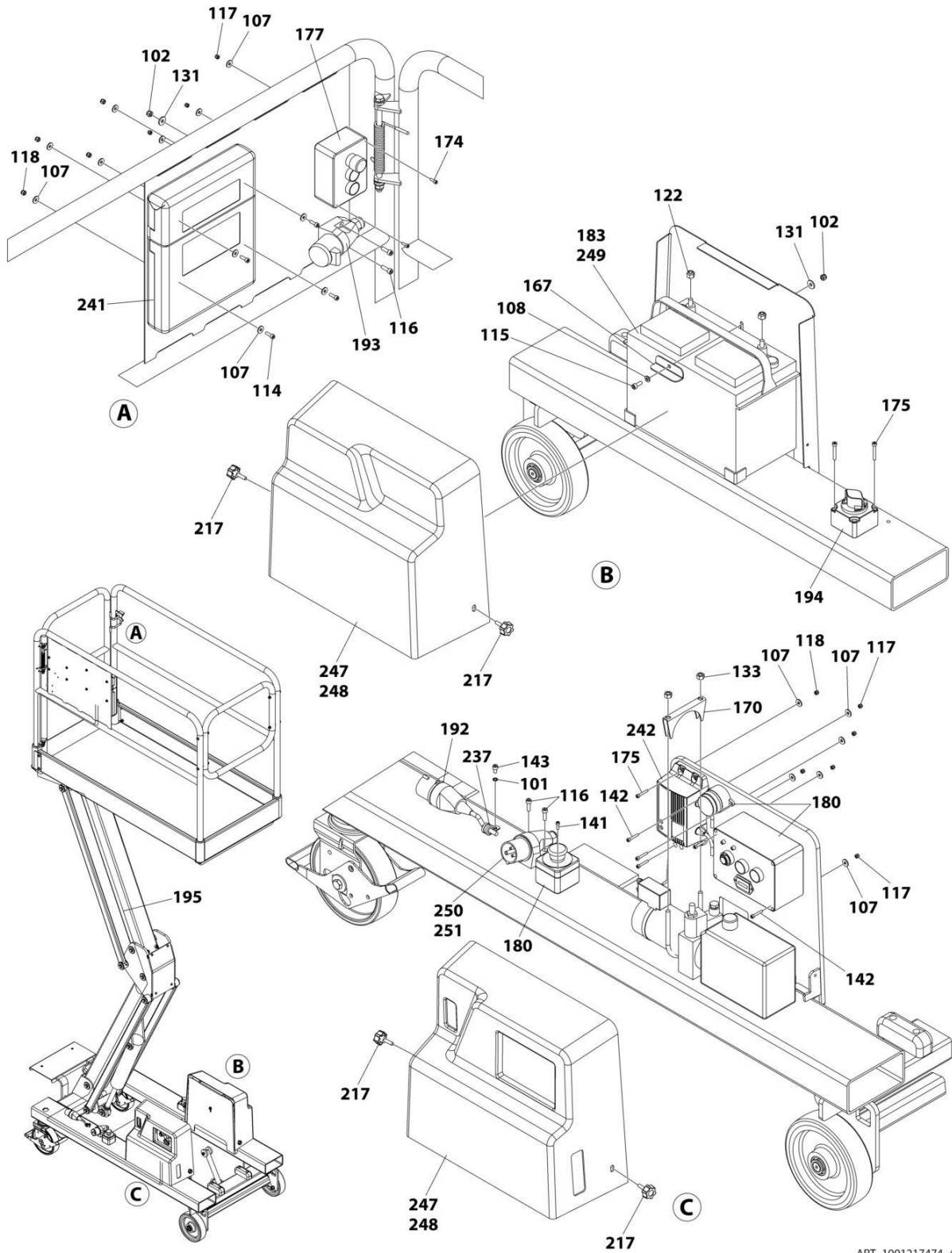
SECTION 1 - MACHINE COMPONENTS

FIGURE 1-3. PLATFORM ASSEMBLY

| ITEM | PART NUMBER | QTY | DESCRIPTION | REV |
|------|-------------|-----|----------------------------|-----|
| | 1001217474 | Ref | PLATFORM ASSEMBLY | E |
| 102 | 1001264557 | 1 | Nut M6 | |
| 103 | 1001265092 | 2 | Cap, Spring | |
| 104 | 1001265099 | 1 | Spring | |
| 108 | 1001265112 | 3 | Washer M6 | |
| 109 | 1001265113 | 22 | Washer M8 | |
| 111 | 1001265115 | 6 | Washer M10 | |
| 112 | 1001265116 | 2 | Washer M10 | |
| 116 | 1001265127 | 1 | Bolt M6 x 20 | |
| 119 | 1001265135 | 12 | Nut M8 | |
| 120 | 1001265136 | 4 | Nut M10 | |
| 121 | 1001265138 | 4 | Nut M12 | |
| 127 | 1001265203 | 2 | Bolt M8 x 25 | |
| 128 | 1001265204 | 1 | Bolt M10 x 35 | |
| 132 | 1001265462 | 4 | Washer M12 | |
| 134 | 1001265498 | 4 | Bolt M8 x 90 | |
| 139 | 1001265507 | 4 | Bolt M8 x 20 | |
| 147 | 1001265515 | 2 | Bolt M8 x 20 | |
| 166 | 1001265670 | 1 | Base, Platform | |
| 172 | 1001265898 | 1 | Handrail - Gate Latch Side | |
| 173 | 1001265899 | 1 | Handrail - Panel Side | |
| 176 | 1001265144 | 1 | Bolt M10 x 220 | |
| 178 | 1001266916 | 2 | Tube, Support | |
| 179 | 1001266917 | 2 | Tube, Support | |
| 227 | PTM1302 | 1 | Gate, Platform | |
| 228 | PTM133 | 1 | Latch | |
| 229 | PTM1352 | 1 | End Hoop, Platform | |
| 230 | PTM137 | 2 | Guide, Handrail | |
| 231 | PTM1382 | 1 | Tray, Platform | |
| 233 | PTM149 | 2 | Eyelet | |
| 234 | 1001265645 | 1 | Grommet | |
| 238 | PTM173 | 4 | Spacer | |

SECTION 1 - MACHINE COMPONENTS

FIGURE 1-4. COVERS AND CONTROLS INSTALLATION



ART_1001217474_40F7

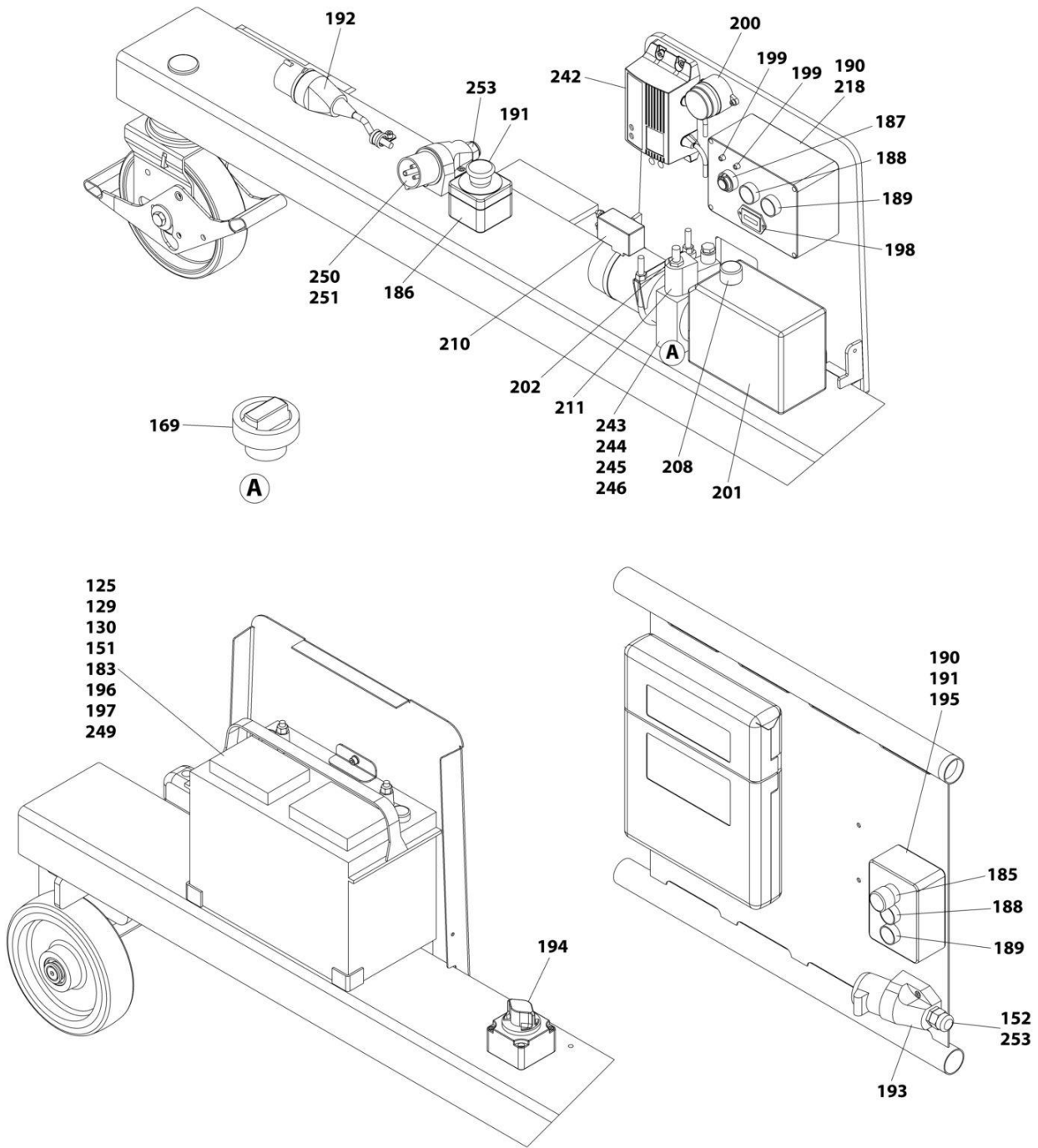
SECTION 1 - MACHINE COMPONENTS

FIGURE 1-4. COVERS AND CONTROLS INSTALLATION

| ITEM | PART NUMBER | QTY | DESCRIPTION | REV |
|------|-------------|-----|----------------------------------|-----|
| | 1001217474 | Ref | COVERS AND CONTROLS INSTALLATION | E |
| 101 | 1001264555 | 1 | Washer M6 | |
| 102 | 1001264557 | 2 | Nut M6 | |
| 107 | 1001265111 | 17 | Washer M5 | |
| 108 | 1001265112 | 1 | Washer M6 | |
| 114 | 1001265125 | 4 | Bolt M5 x 16 | |
| 115 | 1001265126 | 1 | Bolt M6 x 16 | |
| 116 | 1001265127 | 4 | Bolt M6 x 20 | |
| 117 | 1001265133 | 8 | Nut M4 | |
| 118 | 1001265134 | 5 | Nut M5 | |
| 122 | 1001265140 | 2 | Nut 5/16 | |
| 131 | 1001265461 | 2 | Washer M6 | |
| 133 | 1001265496 | 2 | Nut M8 | |
| 141 | 1001265509 | 1 | Bolt M4 x 12 | |
| 142 | 1001265510 | 5 | Bolt M4 x 25 | |
| 143 | 1001265511 | 1 | Bolt M6 x 10 | |
| 167 | 1001265671 | 1 | Clamp, Battery | |
| 170 | 1001265896 | 1 | Clamp, Pipe | |
| 174 | 1001265988 | 2 | Bolt M4 x 16 | |
| 175 | 1001265990 | 3 | Bolt M5 x 30 | |
| 177 | 1001266887 | 1 | Controls, Platform | |
| 180 | 1001269149 | 1 | Controls, Ground | |
| 183 | PTE002 | 1 | Battery (Standard) | |
| 192 | PTE010 | 1 | Plug | |
| 193 | PTE011 | 1 | Socket | |
| 194 | PTE014 | 1 | Isolator, Battery | |
| 195 | PTE016 | 1 | Cable (Black) | |
| 217 | PTM107 | 4 | Knob | |
| 237 | PTM172 | 1 | Clip | |
| 241 | PTNM342 | 1 | Box, Manual | |
| 242 | 1001276409 | 1 | Charger, Battery | |
| 247 | 1001273760 | 1 | Cabinet Lid, Pair (Orange) | |
| 248 | 1001279201 | 1 | Cabinet Lid, Pair (Black) | |
| 249 | 1001277683 | 1 | Battery (AGM) | |
| 250 | 1001278108 | 1 | Plug | |
| 251 | PTNSPE645 | 1 | Plug | |

SECTION 1 - MACHINE COMPONENTS

FIGURE 1-5. ELECTRICAL COMPONENTS INSTALLATION



ART_1001217474_50F7

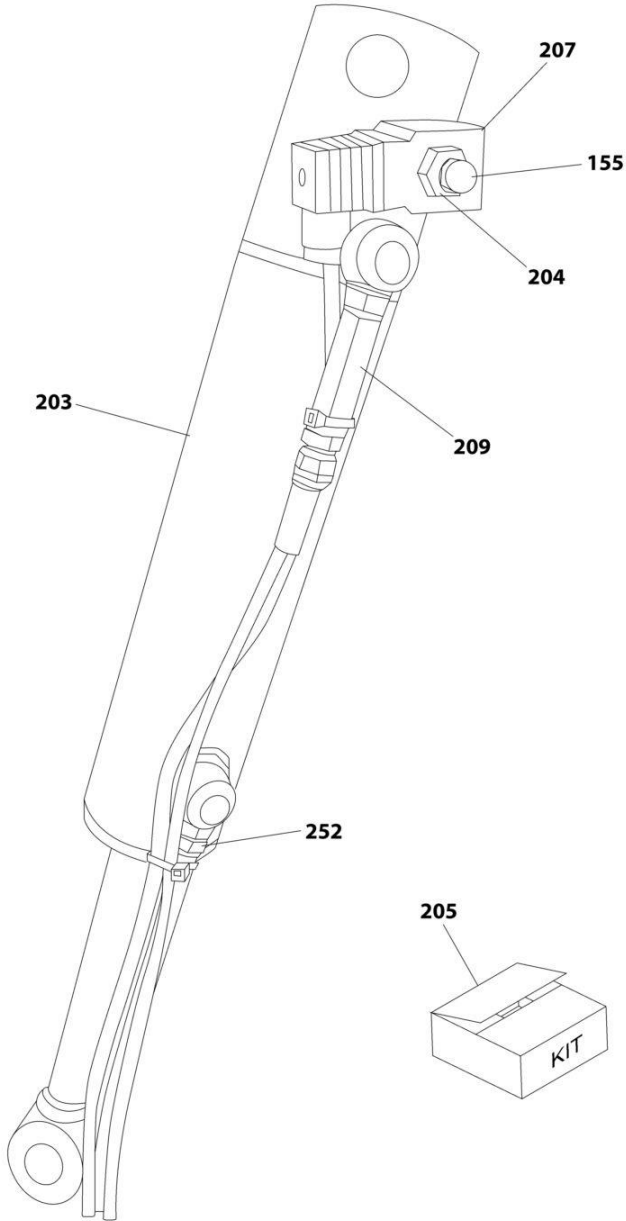
SECTION 1 - MACHINE COMPONENTS

FIGURE 1-5. ELECTRICAL COMPONENTS INSTALLATION

| ITEM | PART NUMBER | QTY | DESCRIPTION | REV |
|------|-------------|-----|------------------------------------|-----|
| | 1001217474 | Ref | ELECTRICAL COMPONENTS INSTALLATION | E |
| 125 | 1001265150 | 2 | Terminal, Ring | |
| 129 | 1001265235 | 20 | Tie-Strap | |
| 130 | 1001265458 | 1 | Cable (Red 600mm) | |
| 151 | 1001265521 | 2 | Tie-Strap | |
| 152 | 1001265522 | 1 | Cable (Yellow) | |
| 169 | 1001265895 | 1 | Coupling, Motor | |
| 183 | PTE002 | 1 | Battery (Standard) | |
| 185 | PTE003 | 1 | Switch, Emergency Stop | |
| 186 | PTE004 | 1 | Enclosure, Emergency Stop | |
| 187 | PTE005 | 1 | Switch, Key | |
| 188 | PTE006 | 2 | Switch, Push Button | |
| 189 | PTE007 | 2 | Switch, Push Button | |
| 190 | PTNSPE631 | 10 | Contact Block (Green) | |
| 191 | PTNSPE619 | 2 | Contact Block (Red) | |
| 192 | PTE010 | 2 | Plug | |
| 193 | PTE011 | 1 | Socket | |
| 194 | PTE014 | 1 | Isolator, Battery | |
| 195 | PTE016 | 1 | Cable (Black) | |
| 196 | PTE017 | 1 | Cable (Black 1450mm) | |
| 197 | PTE018 | 1 | Cable (Red 1700mm) | |
| 198 | PTE021 | 1 | Meter, Battery Condition | |
| 199 | PTE022 | 2 | Lamp | |
| 200 | PTE023 | 1 | Alarm | |
| 201 | PTH051 | 1 | Powerpack, 12V | |
| 202 | PTH052 | 1 | Valve, Cartridge | |
| 208 | PTH058 | 1 | Cap, Breather | |
| 210 | PTH063 | 1 | Solenoid, Motor | |
| 211 | PTH064 | 1 | Solenoid, Powerpack | |
| 218 | PTM112 | 1 | Key, Replacement | |
| 242 | 1001276409 | 1 | Charger, Battery | |
| 243 | 1001274228 | 2 | Fitting, Straight | |
| 244 | 1001274229 | 3 | Washer, Bonded | |
| 245 | 1001274230 | 1 | Hose, Pressure (1330mm) | |
| 246 | 1001274231 | 1 | Hose, Drain (950mm) | |
| 249 | 1001277683 | 1 | Battery (AGM) | |
| 250 | 1001278108 | 1 | Plug | |
| 251 | PTNSPE645 | 1 | Plug | |
| 253 | 1001266529 | 2 | Connector, Strain Relief | |

SECTION 1 - MACHINE COMPONENTS

FIGURE 1-6. CYLINDER ASSEMBLY - LIFT



ART_1001217474_6OF7

SECTION 1 - MACHINE COMPONENTS

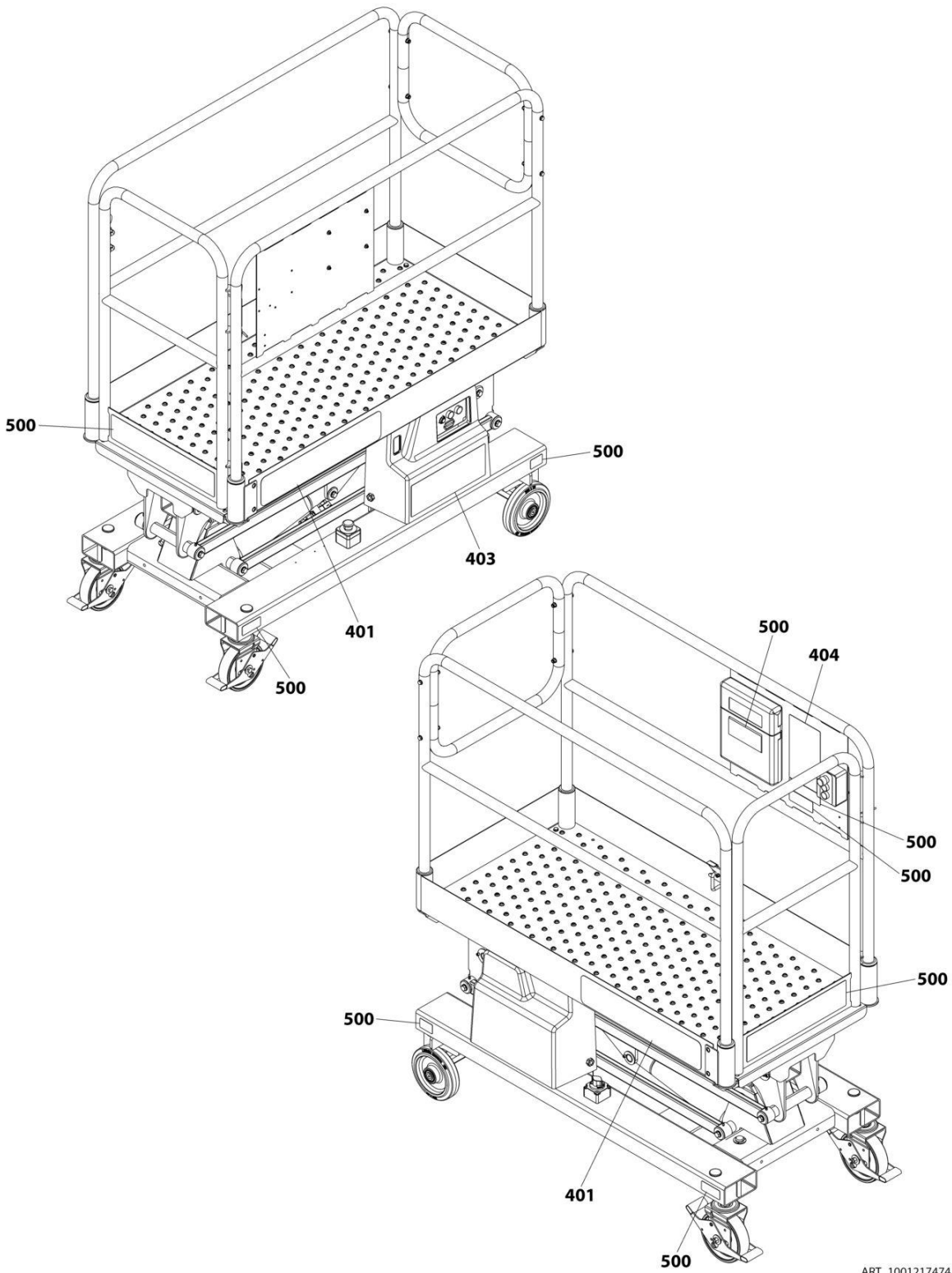
FIGURE 1-6. CYLINDER ASSEMBLY - LIFT

| ITEM | PART NUMBER | QTY | DESCRIPTION | REV |
|------|-------------|-----|--------------------------|-----|
| | 1001217474 | Ref | CYLINDER ASSEMBLY - LIFT | E |
| 155 | 1001265643 | 1 | Cap | |
| 203 | PTH053 | 1 | Lift Cylinder Assembly | |
| 204 | PTH054 | 1 | Valve, Cartridge | |
| 205 | PTH055 | 1 | Kit, Seal - Cylinder | |
| 207 | PTH057 | 1 | Valve, Solenoid | |
| 209 | PTH059 | 1 | Valve | |
| 252 | 1001277716 | 1 | Fitting, Straight | |

SECTION 2 - DECALS

SECTION 2 - DECALS

FIGURE 2-1. DECAL INSTALLATION



ART_1001217474_70F7

SECTION 2 - DECALS

FIGURE 2-1. DECAL INSTALLATION

| ITEM | PART NUMBER | QTY | DESCRIPTION | REV |
|------|-------------|-----|---|-----|
| | 1001217474 | Ref | DECAL INSTALLATION | E |
| 401 | PTM109 | 1 | Decal, Power Tower Logo (Pair) | |
| 403 | 1001274900 | 1 | Decal, Ground Control | |
| 404 | 1001277884 | 1 | Decal, Platform Control | |
| 500 | See Note | Ref | Decal, Complete Sheet (Note: Individual Decals are Not Available for Purchase - Purchase Complete Sheet.) | |
| | PTM108 | 1 | Decal, English Power Tower, Complete Sheet | |
| | PTM108DUT | 1 | Decal, Dutch Power Tower, Complete Sheet | |
| | PTM108FIN | 1 | Decal, Finnish Power Tower, Complete Sheet | |
| | PTM108FR | 1 | Decal, French Power Tower, Complete Sheet | |
| | PTM108GER | 1 | Decal, German Power Tower, Complete Sheet | |
| | PTM108IT | 1 | Decal, Italian Power Tower, Complete Sheet | |
| | 1001282162 | 1 | Decal, Pictorial Power Tower, Complete Sheet | |
| | PTM108POR | 1 | Decal, Portuguese Power Tower, Complete Sheet | |
| | PTM108DAN | 1 | Decal, Danish Power Tower, Complete Sheet | |
| | PTM108NOR | 1 | Decal, Norwegian Power Tower, Complete Sheet | |
| | PTM108POL | 1 | Decal, Polish Power Tower, Complete Sheet | |
| | PTM108SPA | 1 | Decal, Spanish Power Tower, Complete Sheet | |
| | PTM108SWE | 1 | Decal, Swedish Power Tower, Complete Sheet | |

SECTION 3 - SPECIAL OPTIONS

SECTION 3 - SPECIAL OPTIONS

FIGURE 3-1. SPECIAL OPTIONS/ACCESSORIES/KITS

| ITEM | PART NUMBER | QTY | DESCRIPTION | REV |
|------|-------------|-----|--|-----|
| | | Ref | Note: This list is to accomodate machines ordered with special equipment. Options may not be applicable to all models. For more specific parts information contact JLG Parts Department. | |
| | 1001256697 | Ref | Kits/Tools/Accessories | H |
| | 1001306348 | Ref | Kit, Accessory - Bungee Lanyards | |
| | 1001306349 | Ref | Kit, Accessory - D-Rings | |
| | 1001306350 | Ref | Kit, Accessory - Velcro Anchor | |
| | 1001306351 | Ref | Kit, Accessory - MEWP Bag | |
| | 1001306352 | Ref | Kit, Accessory - Tether Tape | |
| | 1001312350 | Ref | Kit, Confine Space | |

PART NUMBER INDEX

SECTION 3 - SPECIAL OPTIONS

| | | | |
|---|-------------------------|-------------------------|------------------------|
| 1001217474..... 11, 13, 15, 17, 19, 21, 25 | 1001265508 11 | 1001274228 19 | PTM1022 11 |
| 1001256697 28 | 1001265509 17 | 1001274229 19 | PTM103 11 |
| 1001264555 13, 17 | 1001265510 17 | 1001274230 19 | PTM106 11 |
| 1001264557 11, 15, 17 | 1001265511 13, 17 | 1001274231 19 | PTM107 17 |
| 1001265092 15 | 1001265512 11, 13 | 1001274900 25 | PTM108 25 |
| 1001265099 15 | 1001265513 11 | 1001276409 17, 19 | PTM108DAN 25 |
| 1001265108 13 | 1001265514 11 | 1001277683 17, 19 | PTM108DUT 25 |
| 1001265110 13 | 1001265515 15 | 1001277716 21 | PTM108FIN 25 |
| 1001265111 17 | 1001265516 11 | 1001277884 25 | PTM108FR 25 |
| 1001265112..... 11, 13, 15, 17 | 1001265517 13 | 1001278108 17, 19 | PTM108GER 25 |
| 1001265113 15 | 1001265518 13 | 1001279201 17 | PTM108IT 25 |
| 1001265114 13 | 1001265521 19 | 1001282162 25 | PTM108NOR 25 |
| 1001265115 11, 15 | 1001265522 19 | 1001306348 28 | PTM108POL 25 |
| 1001265116 11, 15 | 1001265641 13 | 1001306349 28 | PTM108POR 25 |
| 1001265118 11 | 1001265642 11 | 1001306350 28 | PTM108SPA 25 |
| 1001265125 17 | 1001265643 21 | 1001306351 28 | PTM108SWE 25 |
| 1001265126 17 | 1001265645 15 | 1001306352 28 | PTM109 25 |
| 1001265127 15, 17 | 1001265649 11 | 1001312350 28 | PTM112 19 |
| 1001265133 17 | 1001265661 13 | PTE002 17, 19 | PTM113 13 |
| 1001265134 17 | 1001265662 13 | PTE003 19 | PTM116 13 |
| 1001265135 15 | 1001265663 13 | PTE004 19 | PTM117 13 |
| 1001265136 11, 15 | 1001265664 13 | PTE005 19 | PTM124 11 |
| 1001265138 15 | 1001265665 13 | PTE006 19 | PTM126 11, 13 |
| 1001265140 17 | 1001265666 13 | PTE007 19 | PTM127 11 |
| 1001265144 15 | 1001265667 13 | PTE010 17, 19 | PTM128B 11 |
| 1001265147 11 | 1001265668 13 | PTE011 17, 19 | PTM129B 11 |
| 1001265149 13 | 1001265669 13 | PTE014 17, 19 | PTM1302 15 |
| 1001265150 19 | 1001265670 15 | PTE016 17, 19 | PTM133 15 |
| 1001265203 15 | 1001265671 17 | PTE017 19 | PTM1352 15 |
| 1001265204 15 | 1001265746 11 | PTE018 19 | PTM137 15 |
| 1001265235 19 | 1001265895 19 | PTE021 19 | PTM1382 15 |
| 1001265458 19 | 1001265896 17 | PTE022 19 | PTM148 13 |
| 1001265461 17 | 1001265897 11 | PTE023 19 | PTM149 15 |
| 1001265462 11, 13, 15 | 1001265898 15 | PTH051 19 | PTM1522 13 |
| 1001265496 17 | 1001265899 15 | PTH052 19 | PTM163 11 |
| 1001265498 15 | 1001265988 17 | PTH053 21 | PTM172 17 |
| 1001265499 11 | 1001265990 17 | PTH054 21 | PTM173 15 |
| 1001265500 13 | 1001266529 19 | PTH055 21 | PTM2028 13 |
| 1001265501 11 | 1001266887 17 | PTH057 21 | PTM3030 13 |
| 1001265506 13 | 1001266916 15 | PTH058 19 | PTNM342 17 |
| 1001265507 15 | 1001266917 15 | PTH059 21 | PTNSPE619 19 |
| | 1001269149 17 | PTH063 19 | PTNSPE631 19 |
| | 1001273760 17 | PTH064 19 | PTNSPE645 17, 19 |



Corporate Office
JLG Power Towers Limited
Unit 3, Leicester Distribution Park
45 Sunningdale Road
Leicester
LE3 1UX
United Kingdom
 **+44 (0) 116 200 1757**
www.powertowers.com

Visit our website for JLG Worldwide Locations.
www.jlg.com



OSHKOSH™