



---

# Illustrated Parts Manual

## Model Nano

SN P900000110  
to Present

P/N  
31220662  
April 28, 2022 - Rev A

CE  
UK  
CA



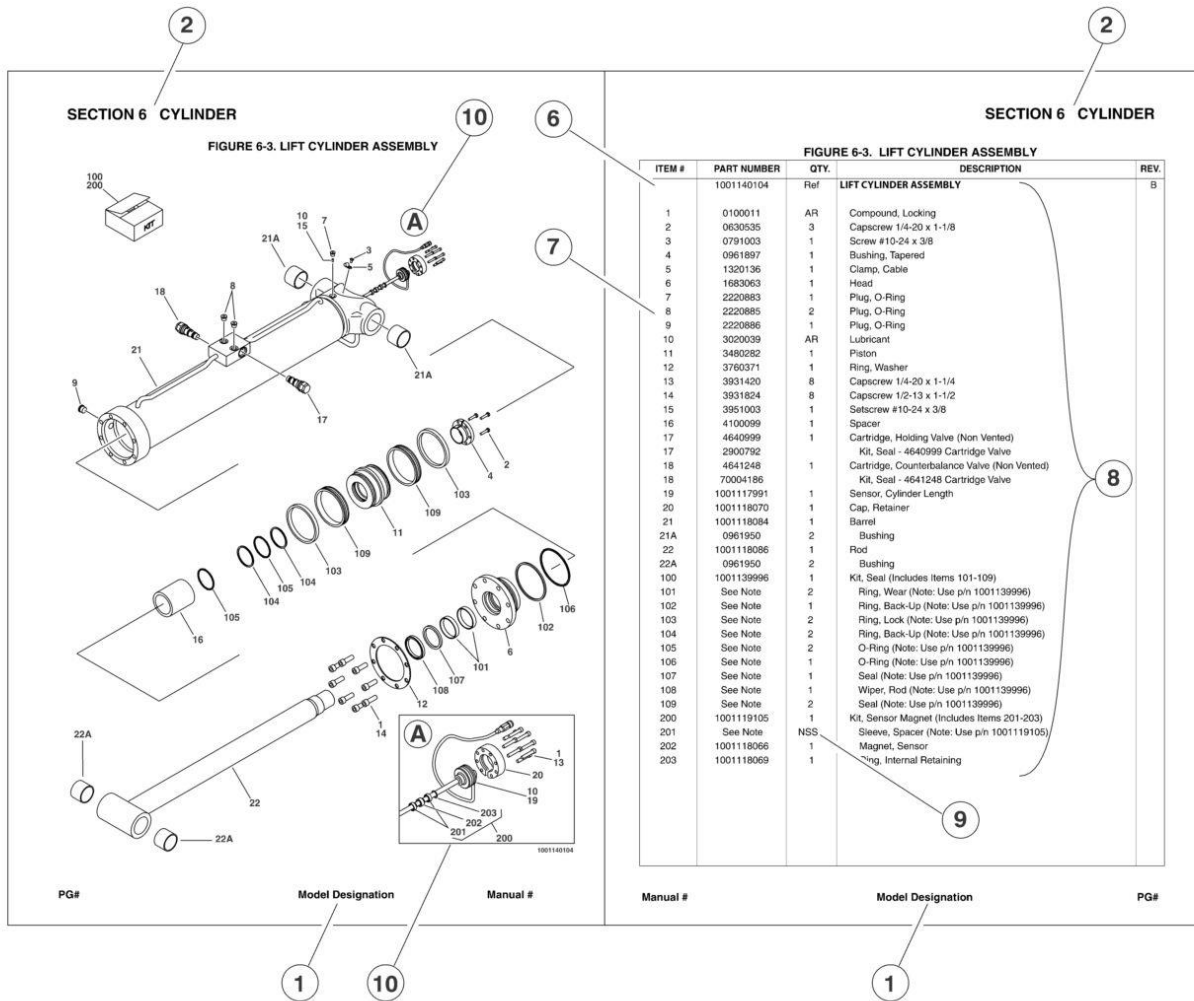
An Oshkosh Corporation Company



## REVISION LOG

April 28, 2022 - A - Original Release of Manual

# GENERAL INFORMATION



## 1) MACHINE IDENTIFICATION

Machines are identified by model and in some cases a combination of models, serial number (SN) or regional standard (i.e. ANSI, CE, CSA). Components may also be identified by SN or manufacturer. Common components that may be identified by these characteristics are engines and hydraulic components.

## 2) PARTS MANUAL ORGANIZATION

Product information in this manual is organized under section titles. Frame, Cylinder, Hydraulic and Electrical are a few examples. Each section is organized by figure and page number. The information within the Figure is then organized by item number, part number, description and corresponding illustration(s).

## 3) TABLE OF CONTENTS

A table of contents is found toward the beginning of the manual. Figure number, description and page number are provided for quick reference to the page containing the related information.

## 4) RECOMMENDED SPARE PARTS

The Recommended Spare Parts, located near the end of the manual, reference most frequently used maintenance parts.

## 5) PART NUMBER INDEX

A numerical index listing all part numbers and the corresponding page number(s) appears at the back of the manual.

## GENERAL INFORMATION

### 6) NON-SERVICED PARTS

In some instances, it is necessary to display non-serviced parts, assemblies or installations. In the case of assemblies and installations there will be a Ref in the Qty column. In case of parts that are not available for service within assemblies and components, there will be a NSS (Not Sold Separately) or NLA (No Longer Available) listed in the Qty. column of the manual.

### 7) PARTS LIST ITEM NUMBERS

Numbers shown in the item# column correspond to numbers used in the associated illustration (s). Item numbers which are missing from the sequence in the parts list are not used on that page

### 8) INDENTED PARTS DESCRIPTION

An indented part description is included in the item under which it is indented.

### 9) ABBREVIATION AND SYMBOLS

AC.....	.. Alternating Current	LCD.....	Liquid Crystal Display
ADE.....	Advanced Design Electronics	LED.....	Light Emitting Diodes
ANSI.....	.. American National Standards Institute	LH.....	Left Hand
AR.....	.. As Required	LSS.....	.. Load Sensing System
ASSY.....	Assembly	M(m).....	Metric/Meter
AUX.....	Auxiliary	MM (mm).....	Milimeter
AWG.....	.. American Wire Gauge	mA.....	Miliamps
B/M.....	.. Bill of Material	NLA.....	No Longer Available
CE.....	.. European Conformity	NPT.....	National Pipe Threads
CCW.....	.. Counter Clockwise	NSS.....	Not Sold Separately
cm.....	Centimeter	OD.....	.. Outside Diameter
CW.....	.. Clockwise	ORB.....	O-Ring Boss
CSA.....	.. Canadian Standard Association	ORFS.....	O-Ring Face Seal
CYL.....	Cylinder	OZ (oz).....	.. Ounces
DIA.....	Diameter	PG.....	.. Page
DC.....	Direct Current	P/N.....	.. Part Number
EMS.....	Emergency Stop	qt.....	.. Quarts
ENG.....	Engine	QTY.....	.. Quantity
FT(ft).....	Feet	REF.....	.. Reference
GA(Ga).....	Gauge	REV.....	.. Revision Level
HYD.....	Hydraulic	RH.....	.. Right Hand
Hz.....	Hertz	SAE.....	Society of Automotive Engineers
ID.....	Inside Diameter	SN.....	.. Serial Number
in.....	inches	SPEC(S).....	.. Specifications
ISO.....	International Organization for Standards	T/T.....	.. Turntable
JIC.....	Joint Industry Council	UGM.....	.. Universal Ground Module
KG.....	.. Kilogram	V.....	.. Volts
L.....	.. Liter	W.....	.. Watts
LB.....	.. Pounds	#.....	.. Number

### 10) ILLUSTRATION REFERENCE LETTERS

When necessary, illustrations may contain reference letters that are intended to track information (i. e. hoses, harness) from one point to another or to track visual enlargement of components to show details that may be located in another area on the illustration.

*Note: Due to continuous product improvements, JLG Industries, Inc. reserves the right to make specification changes without prior notification. Contact JLG Industries, Inc. for updated information.*



# TABLE OF CONTENTS

SECTION 1 - MACHINE COMPONENTS ..... 9

    FIGURE 1-1. NANO ASSEMBLY ..... 10

SECTION 2 - DECALS ..... 19

    FIGURE 2-1. DECAL INSTALLATION ..... 20

PART NUMBER INDEX ..... 21

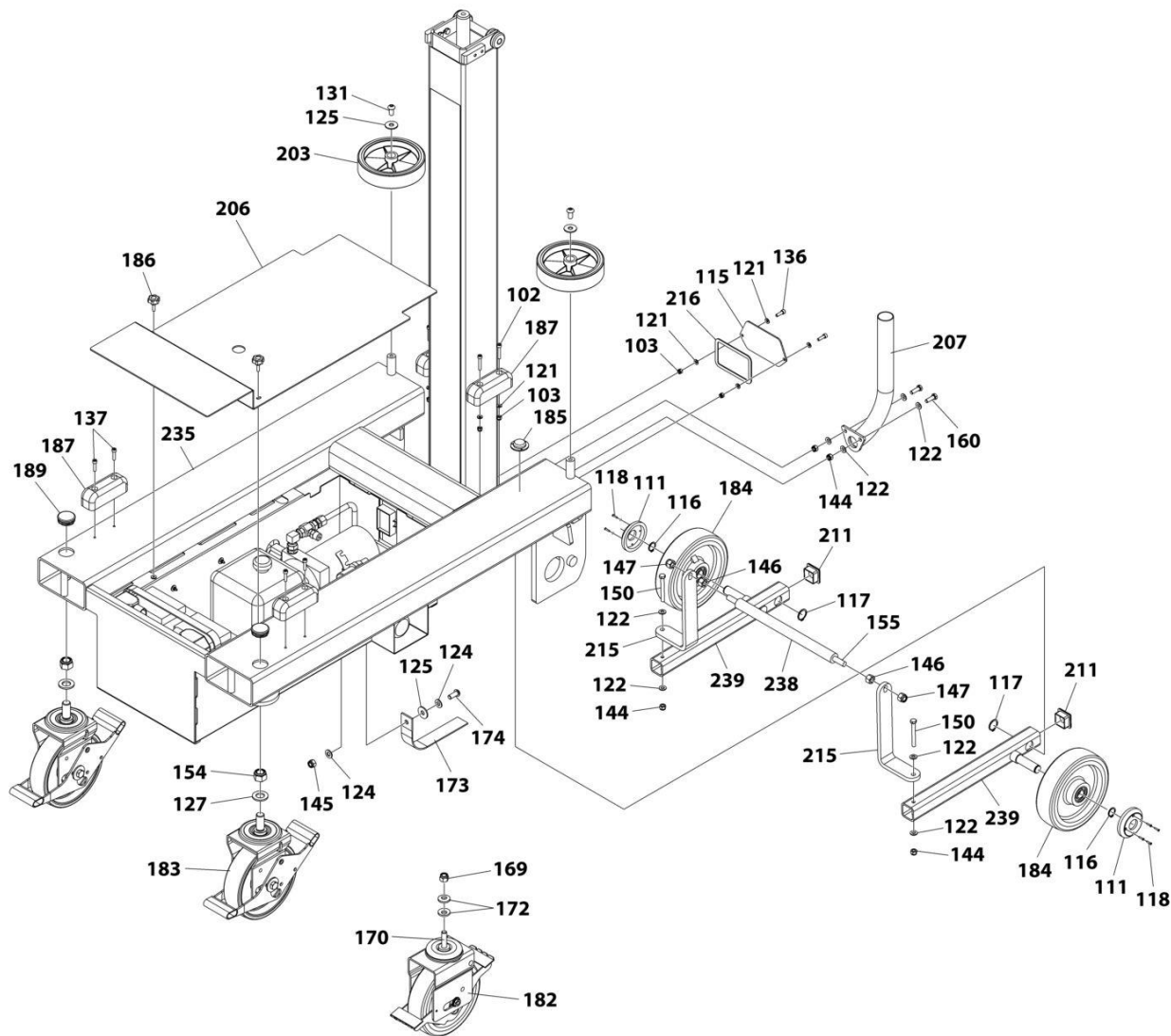




**SECTION 1 - MACHINE COMPONENTS**

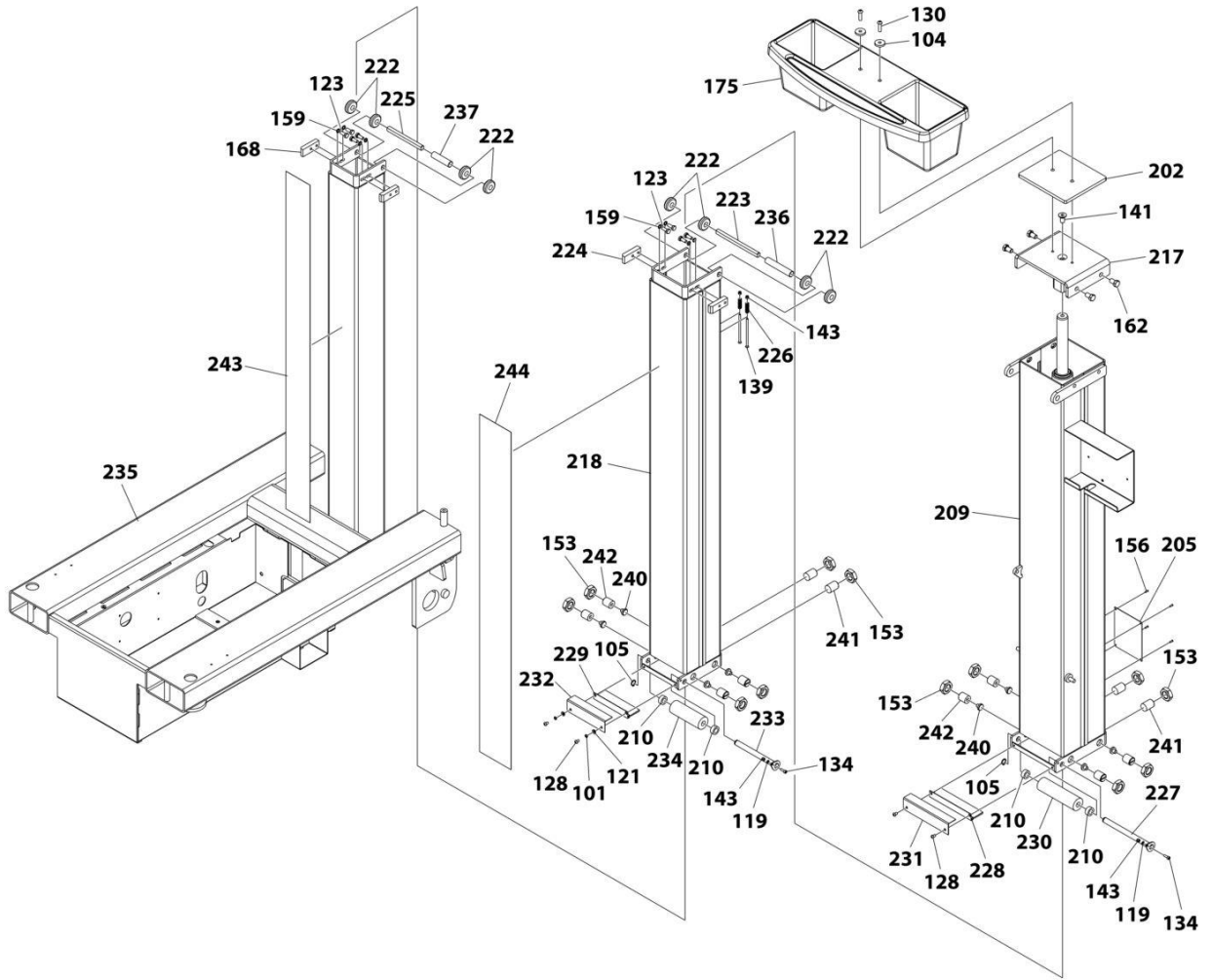
# SECTION 1 - MACHINE COMPONENTS

## FIGURE 1-1. NANO ASSEMBLY



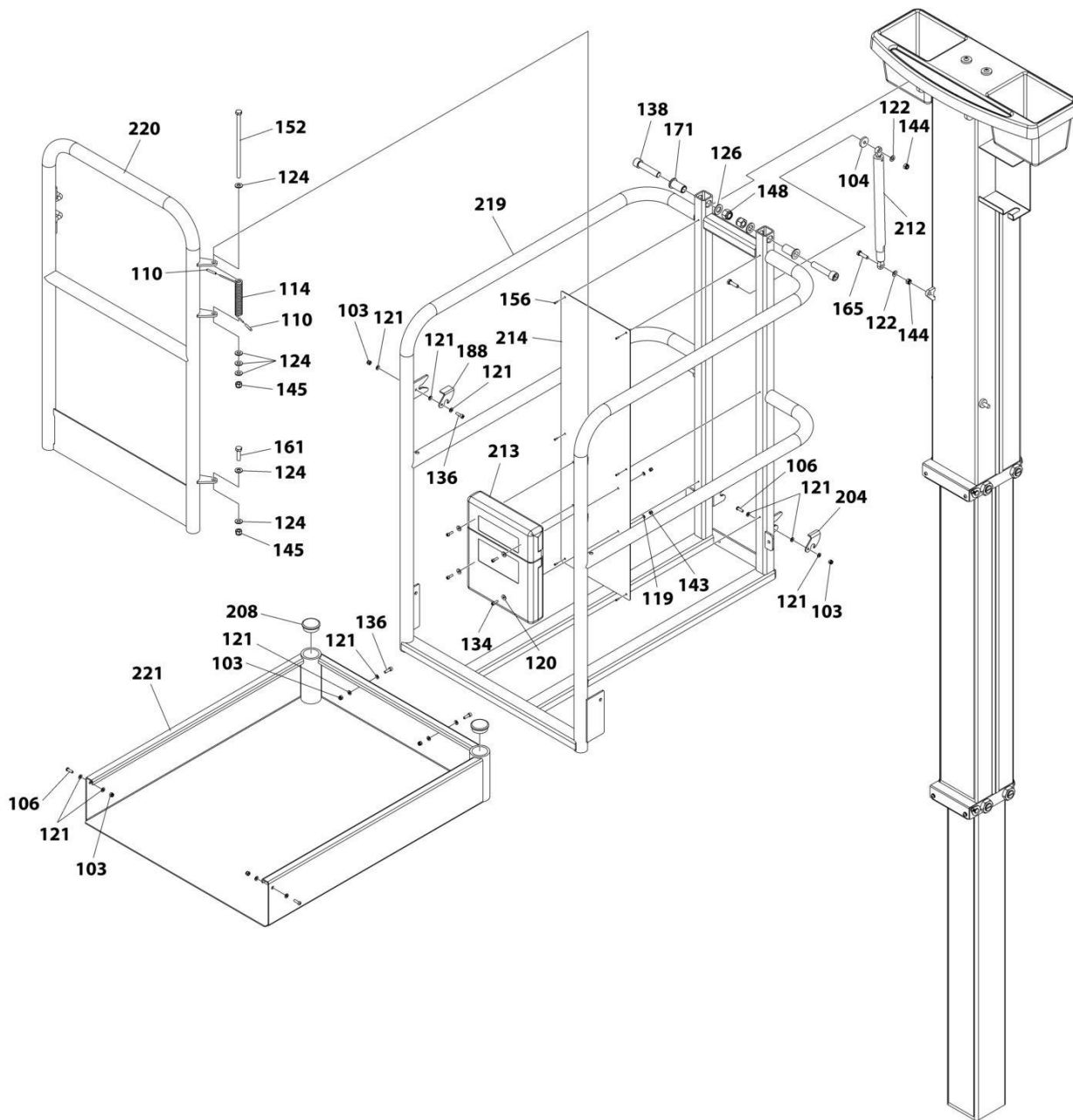
ART\_NANO\_ASSEMBLY\_10F6

# SECTION 1 - MACHINE COMPONENTS



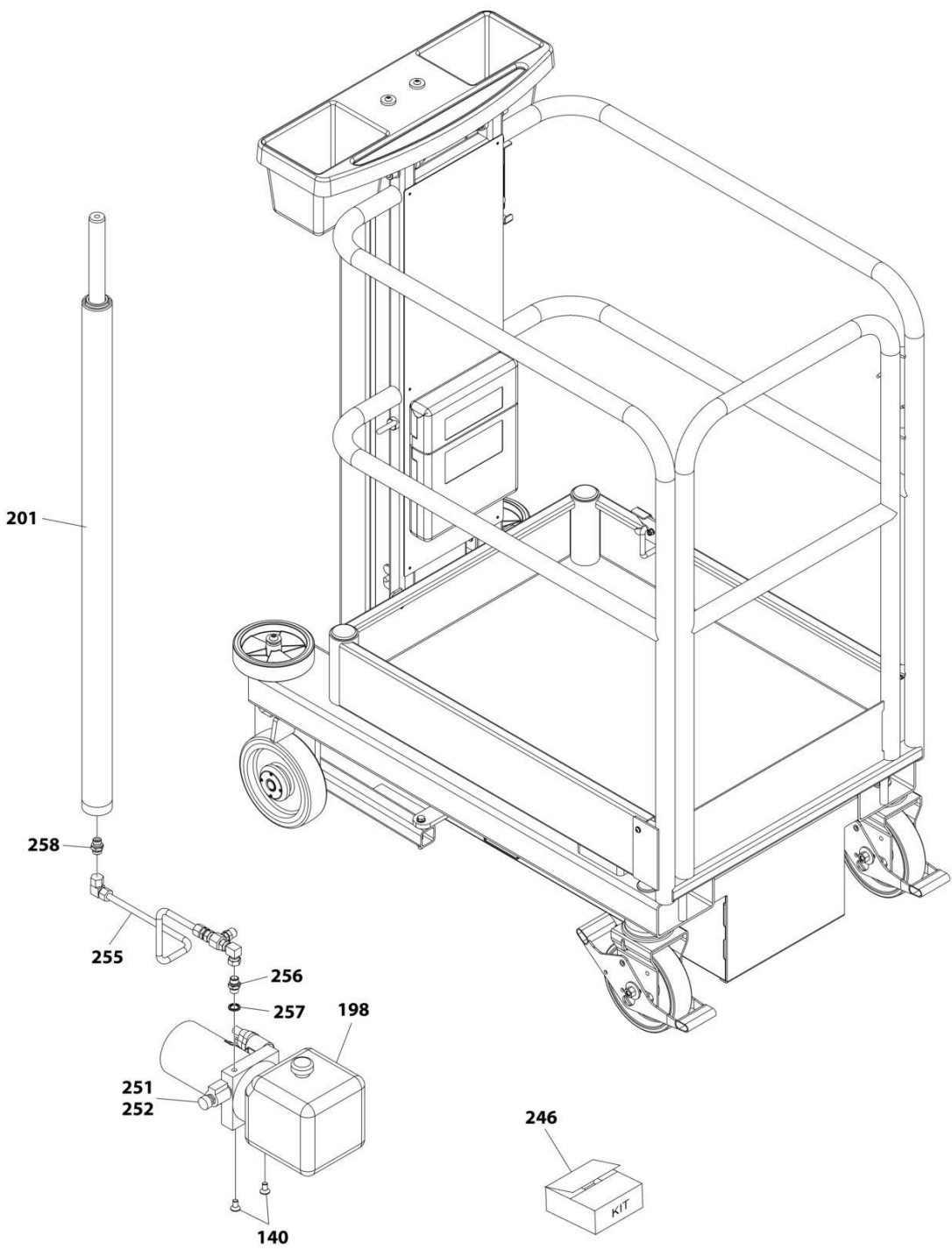
ART\_NANO\_ASSEMBLY\_20F6

# SECTION 1 - MACHINE COMPONENTS



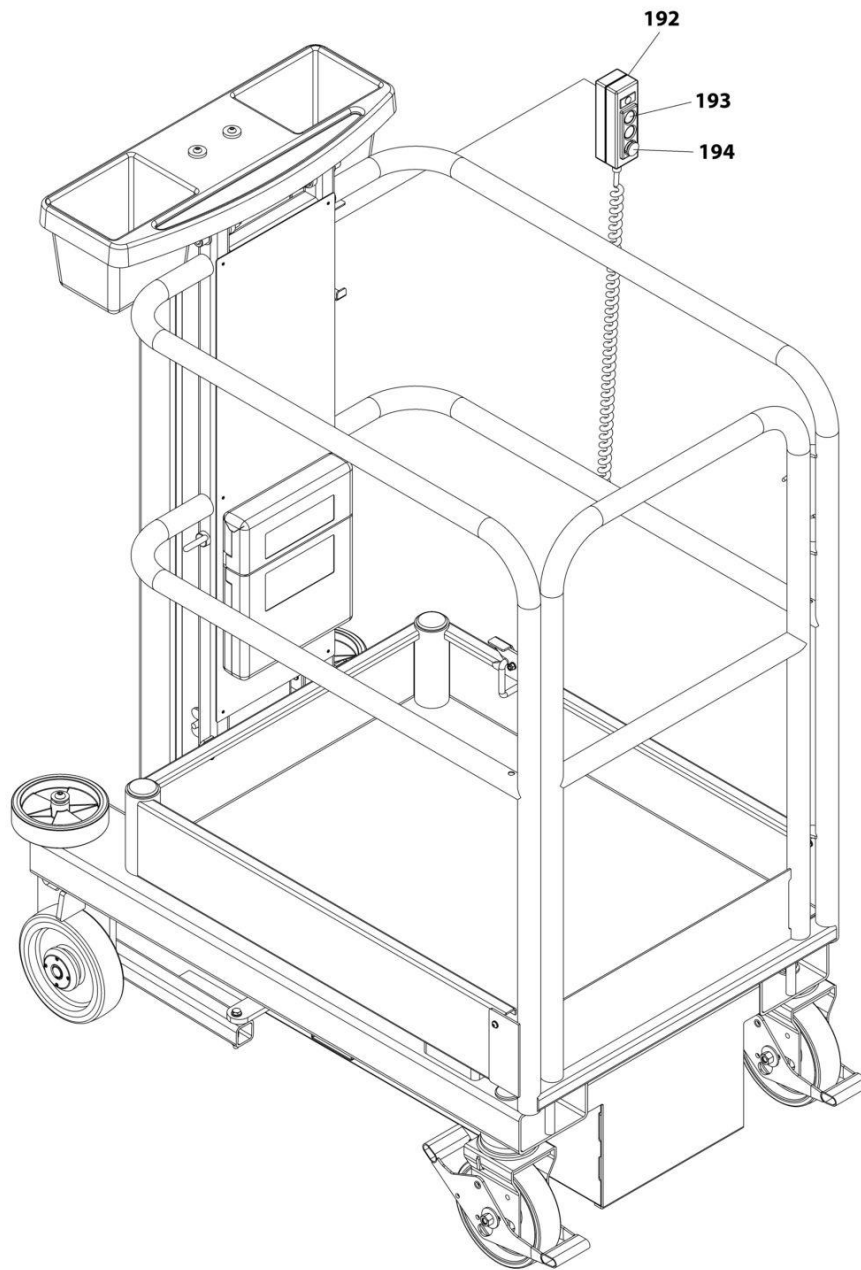
ART\_NANO\_ASSEMBLY\_30F6

# SECTION 1 - MACHINE COMPONENTS



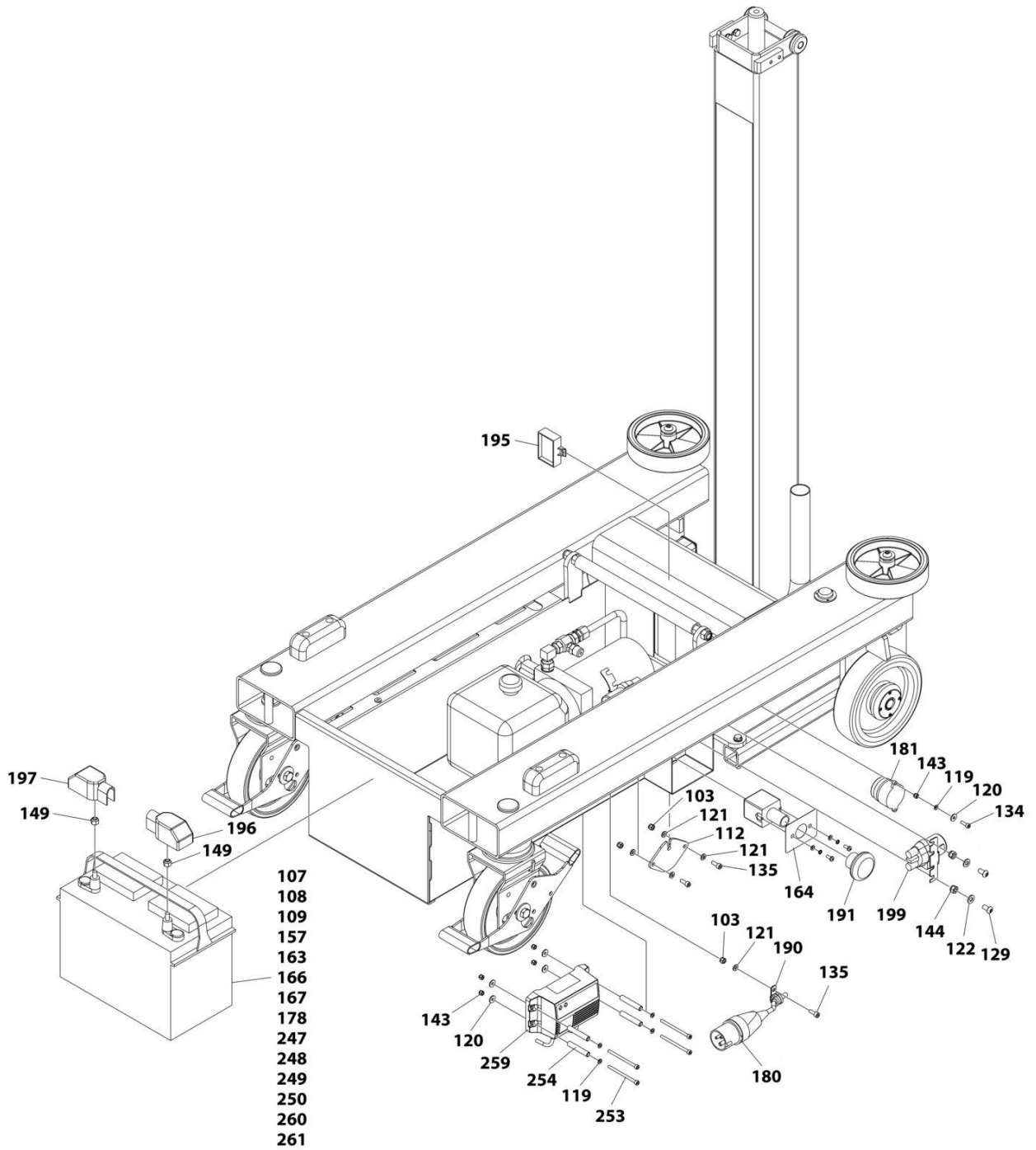
ART\_NANO\_ASSEMBLY\_40F6

# SECTION 1 - MACHINE COMPONENTS



ART\_NANO\_ASSEMBLY\_SOF6

# SECTION 1 - MACHINE COMPONENTS



ART\_NANO\_ASSEMBLY\_6OF6

# SECTION 1 - MACHINE COMPONENTS

## FIGURE 1-1. NANO ASSEMBLY

ITEM	PART NUMBER	QTY	DESCRIPTION	REV
101	1001264555	4	Washer M6	
102	1001264556	4	Bolt M6 x 35	
103	1001264557	6	Nut M6	
104	1001264558	3	Washer M8	
105	1001264559	4	Circlip	
106	1001264707	5	Bolt M6 x 20	
107	1001265054	1	Cable, Battery Black	
108	1001265090	2	Cable, Battery Red	
109	1001265091	1	Cable, Battery Red	
110	1001265092	2	Cap, Spring	
111	1001265093	2	Guard, Hub	
112	1001265094	1	Cover, Charger Lead Hole	
114	1001265099	1	Spring, Gate	
115	1001265100	1	Cover, Spine End	
116	1001265107	2	Circlip	
117	1001265108	2	Circlip	
118	1001265109	8	Bolt 4 x 5/8	
119	1001265110	8	Washer M5	
120	1001265111	8	Washer M5	
121	1001265112	20	Washer M6	
122	1001265113	12	Washer M8	
123	1001265114	12	Washer M8	
124	1001265115	18	Washer M10	
125	1001265116	2	Washer M10	
126	1001265117	4	Washer M16	
127	1001265118	2	Washer 3/4	
128	1001265119	4	Bolt M6 x 10	
129	1001265120	2	Bolt M8 x 16	
130	1001265121	2	Bolt M8 x 30	
131	1001265122	2	Bolt M10 x 20	
133	1001265124	2	Bolt M5 x 12	
134	1001265125	4	Bolt M5 x 16	
135	1001265126	1	Bolt M6 x 16	
136	1001265127	6	Bolt M6 x 20	
137	1001265128	4	Bolt M6 x 25	
138	1001265129	2	Bolt M16 x 75	
139	1001265130	2	Bolt M5 x 100	
140	1001265131	2	Bolt M10 x 20	
141	1001265132	1	Bolt M12 x 25	
143	1001265134	8	Nut M5	
144	1001265135	2	Nut M8	
145	1001265136	3	Nut M10	
146	1001265137	2	Nut M12	
147	1001265138	2	Nut M12	
148	1001265139	2	Nut M16	
149	1001265140	2	Nut 5/16	
150	1001265141	2	Bolt M8 x 70	
152	1001265144	1	Bolt M10 x 220	
153	1001265146	12	Nut M24	
154	1001265147	2	Nut 3/4	



## SECTION 1 - MACHINE COMPONENTS

ITEM	PART NUMBER	QTY	DESCRIPTION	REV
155	1001265148	1	Bar, Threaded M12	
156	1001265149	10	Rivet	
157	1001265150	2	Ring Connector	
158	1001265201	5 gl	Fluid (Not Shown)	
159	1001265202	8	Bolt M8 x 20	
160	1001265203	2	Bolt M8 x 25	
161	1001265204	1	Bolt M10 x 35	
162	1001265205	4	Bolt M12 x 20	
163	1001265217	1	Connectors	
164	1001265232	1	Decal, Emergency Stop	
165	1001265233	2	Bolt M8 x 30	
166	1001265234	2	Tie Strap	
167	1001265235	10	Tie Strap	
168	1001265366	2	Pad, Wear	
169	1001265746	2	Nut M12	
170	1001265747	2	Bolt M12 x 60	
171	1001265748	2	Pivot, Platform	
172	1001265750	4	Washer	
173	1001265952	1	Cable, Earthing	
174	1001265959	1	Bolt M10 x 25	
175	PELM405	1	Tray, Tool	
178	PTE002	1	Battery - Standard	
180	PTE010	1	Plug	
181	PTE215	1	Siren, Power Pack	
182	PTM102	2	Castor - Swivel	
183	PTM1022	2	Castor - Swivel	
184	PTM103	2	Castor - Fixed	
185	PTM106	1	Level	
186	PTM107	2	Knob	
187	PTM126	4	Pad, Rest	
188	PTM133	1	Latch	
189	PTM163	2	Insert, Chassis	
190	PTM172	1	Clip	
191	PTNE200	1	Switch, Emergrncy Stop	
192	PTNE201	1	Controller	
193	PTNE202	1	Switch, Up/Down Button	
194	PTNE204	1	Switch, E-Stop Controller	
195	PTNE208	1	Valve, Solenoid 12V	
196	PTNE213	1	Cover, Battery Terminal - Blue/Black	
197	PTNE214	1	Cover, Battery Terminal - Red	
198	PTNH251	1	Power Pack	
199	PTNH252	1	Valve, Start Solenoid	
201	PTNH276C	1	Cylinder, Pin	
202	PTNM300	1	Spacer, Mast Cap	
203	PTNM302	2	Wheel, Buffer	
204	PTNM307	1	Latch, Platform	
205	PTNM3092	1	Plate	
206	PTNM320	1	Lid, Chassis	
207	PTNM321	1	Tube, Guide	
208	PTNM323	2	Cap, End	
209	PTNM329	1	Mast Assembly	

## SECTION 1 - MACHINE COMPONENTS

ITEM	PART NUMBER	QTY	DESCRIPTION	REV
210	PTNM330	4	Spacer	
211	PTNM332	2	Cap, End	
212	PTNM340	1	Strut	
213	PTNM342	1	Document Holder	
214	PTNM343	1	Plate, Platform Label	
215	PTNM344	2	Bracket, Autobrake	
216	PTNM345	1	Gasket, Spine End Cover	
217	PTNM348	1	Cap, Mast	
218	PTNM349	1	Mast, Middle	
219	PTNM350	1	Cage Assembly	
220	PTNM351	1	Assess Gate	
221	PTNM355	1	Cage Tray	
222	PTNM356	8	Roller, Mast	
223	PTNM3572	1	Axle	
224	PTNM358	2	Pad, Wear	
225	PTNM359	1	Axle	
226	PTNM360	2	Spring	
227	PTNM361	1	Axle	
228	PTNM363A	1	Brush	
229	PTNM363B	1	Brush	
230	PTNM364	1	Roller, Outer Mast	
231	PTNM365A	1	Cover, Roller	
232	PTNM365B	1	Cover, Roller	
233	PTNM366	1	Axle	
234	PTNM367	1	Roller, Mid Mast	
235	PTNM368	1	Chassis	
236	PTNM370	1	Spacer	
237	PTNM371	1	Spacer	
238	PTNM380	1	Roller, Brake	
239	PTNM385	2	Arm, Axle	
240	PTNM389	8	Insert, Wear Screw	
241	PTNM390	4	Screw, Plastic Wear	
242	PTNM390SS	8	Screw, Stainless Steel Wear	
243	PTNM393	1	Strip, Wear	
244	PTNM394	1	Strip, Wear	
246	PTNH277	1	Kit, Seal	
247	1001267580	1	Plug	
248	1001267581	2	Plug	
249	1001267582	3	Pin	
250	1001267583	4	Pin	
251	1001268977	1	Solenoid, Emergency Lowering 12V	
252	PTNH256	1	Valve, Emergency Lowering Cartridge	
253	1001277888	4	Bolt M5 x 75	
254	1001277889	4	Sleeve	
255	1001284153	1	Pipe, Nano Assembly	
256	1001284154	1	Fitting 3/8	
257	1001284155	1	Washer	
258	1001283541	1	Coupling	
259	1001276409	1	Charger, Battery	
260	1001277683	1	Battery - 12V	
261	PTNM341	1	Key	

**SECTION 2 - DECALS**

## SECTION 2 - DECALS

**FIGURE 2-1. DECAL INSTALLATION**

ITEM	PART NUMBER	QTY	DESCRIPTION	REV
		Ref	Note: Individual Decals are Not Available for Purchase - Purchase Complete Sheet.	
	PTNM322	1	Decal, English Nano, Complete Sheet	
	PTNM322DU	1	Decal, Dutch Nano, Complete Sheet	
	PTNM322FIN	1	Decal, Finish Nano, Complete Sheet	
	PTNM322FRE	1	Decal, French Nano, Complete Sheet	
	PTNM322GER	1	Decal, German Nano, Complete Sheet	
	PTNM322ITA	1	Decal, Italian Nano, Complete Sheet	
	PTNM322NOR	1	Decal, Norwegian Nano, Complete Sheet	
	PTNM322SER	1	Decal, Serbian Nano, Complete Sheet	
	PTNM322SPA	1	Decal, Spanish Nano, Complete Sheet	
	PTNM322SWE	1	Decal, Swedish Nano, Complete Sheet	
	PTNM322POR	1	Decal, Portuguese Nano, Complete Sheet	
	PTNM322POL	1	Decal, Polish Nano, Complete Sheet	
	PTNM310	1	Decal, Nano Logos (Pair)	

**PART NUMBER INDEX**

## SECTION 2 - DECALS

1001264555 .....	16	1001265137 .....	16	PTE002 .....	17	PTNM322SWE .....	20
1001264556 .....	16	1001265138 .....	16	PTE010 .....	17	PTNM323 .....	17
1001264557 .....	16	1001265139 .....	16	PTE215 .....	17	PTNM329 .....	17
1001264558 .....	16	1001265140 .....	16	PTM102 .....	17	PTNM330 .....	18
1001264559 .....	16	1001265141 .....	16	PTM1022 .....	17	PTNM332 .....	18
1001264707 .....	16	1001265144 .....	16	PTM103 .....	17	PTNM340 .....	18
1001265054 .....	16	1001265146 .....	16	PTM106 .....	17	PTNM341 .....	18
1001265090 .....	16	1001265147 .....	16	PTM107 .....	17	PTNM342 .....	18
1001265091 .....	16	1001265148 .....	17	PTM126 .....	17	PTNM343 .....	18
1001265092 .....	16	1001265149 .....	17	PTM133 .....	17	PTNM344 .....	18
1001265093 .....	16	1001265150 .....	17	PTM163 .....	17	PTNM345 .....	18
1001265094 .....	16	1001265201 .....	17	PTM172 .....	17	PTNM348 .....	18
1001265099 .....	16	1001265202 .....	17	PTNE200 .....	17	PTNM349 .....	18
1001265100 .....	16	1001265203 .....	17	PTNE201 .....	17	PTNM350 .....	18
1001265107 .....	16	1001265204 .....	17	PTNE202 .....	17	PTNM351 .....	18
1001265108 .....	16	1001265205 .....	17	PTNE204 .....	17	PTNM355 .....	18
1001265109 .....	16	1001265217 .....	17	PTNE208 .....	17	PTNM356 .....	18
1001265110 .....	16	1001265232 .....	17	PTNE213 .....	17	PTNM3572 .....	18
1001265111 .....	16	1001265233 .....	17	PTNE214 .....	17	PTNM358 .....	18
1001265112 .....	16	1001265234 .....	17	PTNH251 .....	17	PTNM359 .....	18
1001265113 .....	16	1001265235 .....	17	PTNH252 .....	17	PTNM360 .....	18
1001265114 .....	16	1001265366 .....	17	PTNH256 .....	18	PTNM361 .....	18
1001265115 .....	16	1001265746 .....	17	PTNH276C .....	17	PTNM363A .....	18
1001265116 .....	16	1001265747 .....	17	PTNH277 .....	18	PTNM363B .....	18
1001265117 .....	16	1001265748 .....	17	PTNM300 .....	17	PTNM364 .....	18
1001265118 .....	16	1001265750 .....	17	PTNM302 .....	17	PTNM365A .....	18
1001265119 .....	16	1001265952 .....	17	PTNM307 .....	17	PTNM365B .....	18
1001265120 .....	16	1001265959 .....	17	PTNM3092 .....	17	PTNM366 .....	18
1001265121 .....	16	1001267580 .....	18	PTNM310 .....	20	PTNM367 .....	18
1001265122 .....	16	1001267581 .....	18	PTNM320 .....	17	PTNM368 .....	18
1001265124 .....	16	1001267582 .....	18	PTNM321 .....	17	PTNM370 .....	18
1001265125 .....	16	1001267583 .....	18	PTNM322 .....	20	PTNM371 .....	18
1001265126 .....	16	1001268977 .....	18	PTNM322DU .....	20	PTNM380 .....	18
1001265127 .....	16	1001276409 .....	18	PTNM322FIN .....	20	PTNM385 .....	18
1001265128 .....	16	1001277683 .....	18	PTNM322FRE .....	20	PTNM389 .....	18
1001265129 .....	16	1001277888 .....	18	PTNM322GER .....	20	PTNM390 .....	18
1001265130 .....	16	1001277889 .....	18	PTNM322ITA .....	20	PTNM390SS .....	18
1001265131 .....	16	1001283541 .....	18	PTNM322NOR .....	20	PTNM393 .....	18
1001265132 .....	16	1001284153 .....	18	PTNM322POL .....	20	PTNM394 .....	18
1001265134 .....	16	1001284154 .....	18	PTNM322POR .....	20		
1001265135 .....	16	1001284155 .....	18	PTNM322SER .....	20		
1001265136 .....	16	PELM405 .....	17	PTNM322SPA .....	20		





**Corporate Office**  
**JLG Power Towers Limited**  
**Unit 3, Leicester Distribution Park**  
**45 Sunningdale Road**  
**Leicester**  
**LE3 1UX**  
**United Kingdom**  
**+44 (0) 116 200 1757**  
**[www.powertowers.com](http://www.powertowers.com)**

**Visit our website for JLG Worldwide Locations.**  
**[www.jlg.com](http://www.jlg.com)**



**OSHKOSH™**