



Illustrated Parts Manual

Models

LED-6

S/N: 2300L00001 to
S/N: 2300L00381

LED-8

1001309417

OCTOBER 09, 2023

INCLUDES REFURBISHED
LED-6
WITH Z482E/PM5G GENSET



Quality
Endorsed
Company

ISO 9001:2015



LED-6

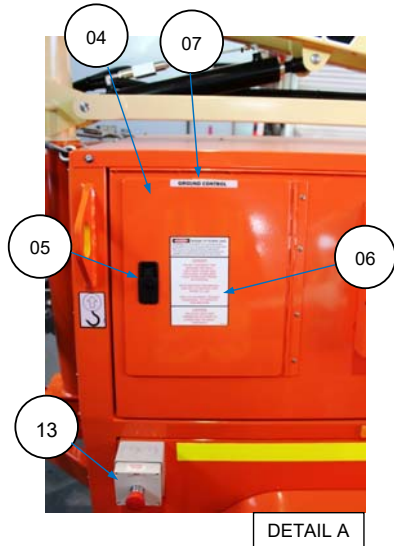
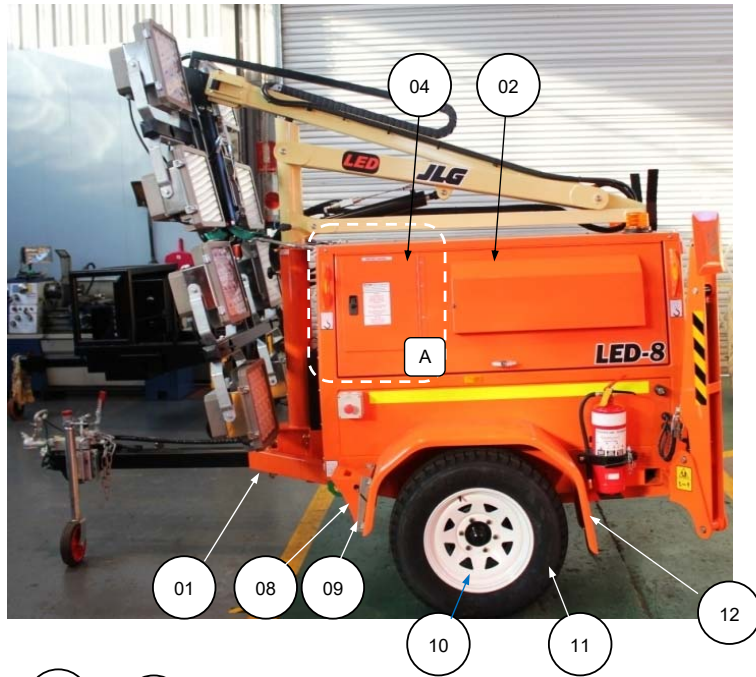
LED-8

ILLUSTRATED PARTS MANUAL

CONTENTS:

FIGURE 3-1	MACHINE LEFT SIDE VIEW	3-3
FIGURE 3-2	MACHINE RIGHT SIDE VIEW	3-5
FIGURE 3-3	MACHINE REAR VIEW [D905/FB4]	3-7
FIGURE 3-4	MACHINE SIDE VIEW [Z482E/PM5G]	3-8
FIGURE 3-5	LOWER MACHINE REAR VIEW	3-9
FIGURE 3-6	MACHINE FRONT	3-10
FIGURE 3-7	FRONT PANEL	3-12
FIGURE 3-8	TRAILER AXLE AND WHEEL HUBS	3-14
FIGURE 3-9	RIGHT SIDE VIEW D905/FB4-100	3-15
FIGURE 3-10	LEFT SIDE VIEW D905/FB4-100	3-17
FIGURE 3-11	FUEL TANK & ACCESSORIES	3-18
FIGURE 3-12	RADIATOR OVERFLOW BOTTLE	3-20
FIGURE 3-13	RIGHT SIDE VIEW Z482E/PM5G	3-21
FIGURE 3-14	REAR RIGHT VIEW Z482E/PM5G	3-22
FIGURE 3-15	Z482E MUFFLER [SIDE-PANEL TAILPIPE]	3-25
FIGURE 3-16	LEFT SIDE VIEW Z482E/PM5G	3-26
FIGURE 3-17	FUEL TANK & ACCESSORIES	3-27
FIGURE 3-18	MAST ASSEMBLY	3-28
	HYDRAULIC SYSTEM	
FIGURE 3-19	MAST CYLINDERS	3-31
FIGURE 3-20	POWERPACK STANDARD 3-DCV	3-33
FIGURE 3-21	POWERPACK (OPTION) 6 OR 7-DCV	3-34
FIGURE 3-22	HYDRAULIC OUTRIGGERS (OPTION)	3-35
	ELECTRICAL SYSTEM	
FIGURE 3-23	CONTROL BOX	3-37
FIGURE 3-24	CONTROL PANELS	3-38
FIGURE 3-25	BATTERY	3-40
FIGURE 3-26	GENERATOR FB4-100	3-41
	LIGHTHEAD FLOODLIGHTS	
FIGURE 3-27	FLOODLIGHT LED TYPE 1	3-43
FIGURE 3-28	FLOODLIGHT LED TYPE 2	3-45
FIGURE 3-29	FLOODLIGHT LED TYPE 3	3-47
	RECOMMENDED SPARE PARTS	

FIGURE 3-1 MACHINE LEFT SIDE VIEW



DETAIL A

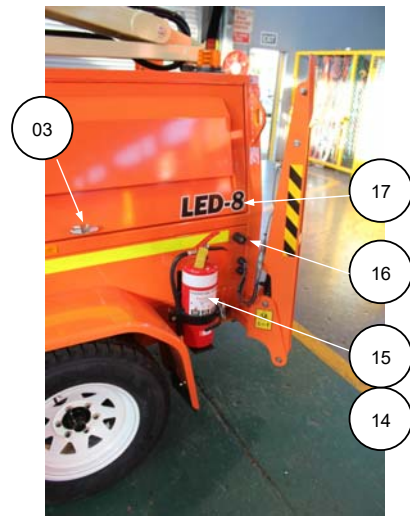


FIGURE 3-1 MACHINE LEFT SIDE VIEW – PARTS LIST

SEQ.#	ITEM NO.	DESCRIPTION	QTY
01	1001170579	FRAME, LED TRAILER FRAME	1
02	1001171028P	DOOR LH, PAINTED	1
03	1001178155	HANDLE, T-DOOR	1
-	1730790	HANDLE, LOCKING TAB	A/R
04	1001171024P	PLATE, CONTROL BOX COVER	1
05	1735660	LATCH, LIFT AND TURN	1
	1001161057	+ LOCKING TAB	1
06	1734218	DECAL, 'OPERATING INSTRUCTIONS'	1
07	1700037	DECAL, 'GROUND CONTROL'	1
08	1733735	CHOCK, URETHANE WHEEL	2
09	1733736	BRACKET, WHEEL CHOCK MOUNTING	2
10	1001185696	WHEEL RIM	2
11	1730618	TYRE, 205/80 X 16"	2
-	1001257569	WHEEL, TYRE ASSY 16 INCH	2
12	1734233	SHIELD, MUDGUARD, LH	1
13	1733047	EMERGENCY STOP SWITCH	1
14	1734123	MOUNT BRACKET, 4.5 kg FIRE EXTINGUISHER	1
15	1733395	FIRE EXTINGUISHER, 4.5 kg	1
16	1730750	STOP BLOCK, JACK STORAGE	2
17	1001173775	DECAL, 'LED-6' (LED-8 SHOWN)	2
18	1001185541	MOUNT, GAS STRUT BALL	4
19	1001185540	STRUT, DOOR GAS	2
20	1734188	SEAL, DOOR RUBBER	5
21	0940036	BUMPER, DOOR RUBBER	4

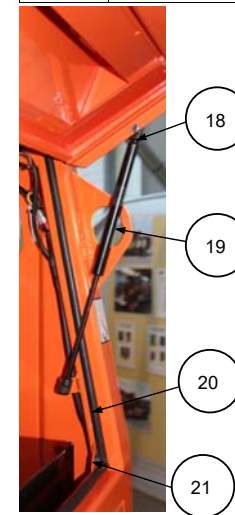


FIGURE 3-2 MACHINE RIGHT SIDE VIEW

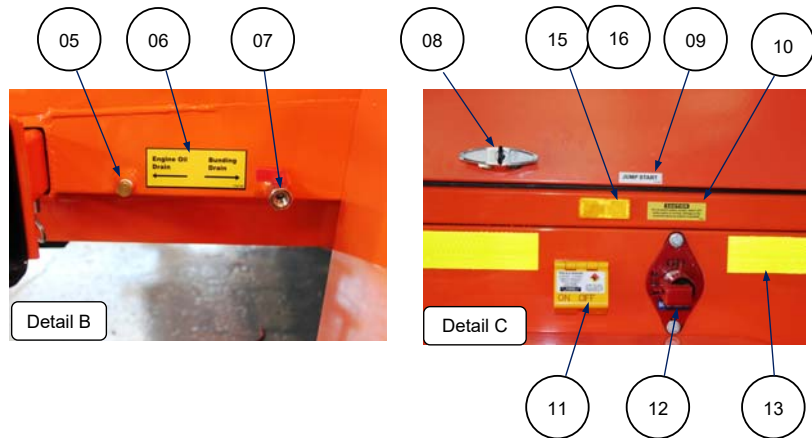
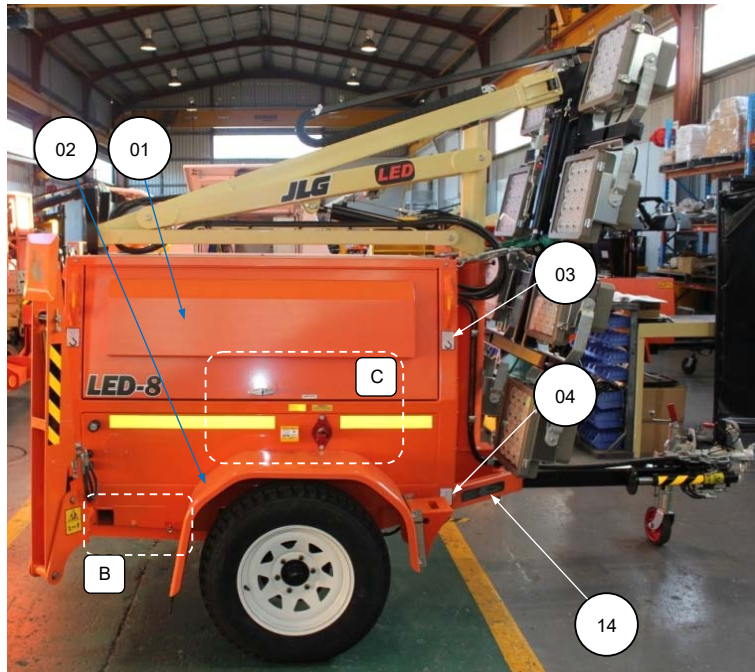
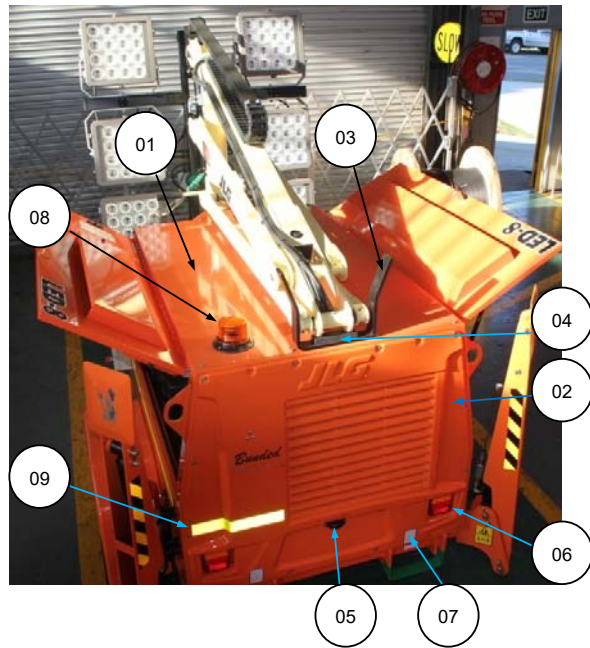


FIGURE 3-2 MACHINE RIGHT SIDE VIEW – PARTS LIST

SEQ.#	ITEM NO.	DESCRIPTION	QTY
01	1001152678	DOOR, ASSEMBLY RH	1
02	1734232	SHIELD, MUDGUARD RH	1
03	1701500	DECAL, 'LIFT' POINT	4
04	1702300	DECAL, 'TIE-DOWN' POINT	2
05	1001190815	PLUG, 1/4" BSPP DRAIN	1
06	1734185	DECAL, 'ENGINE OIL AND BUNDING DRAIN'	1
07	1734046	COCK, 1/4" BSPP M-F DRAIN	1
08	1001178155	HANDLE, T-DOOR	1
-	1730790	HANDLE, LOCK TAB	A/R
09	1001162608	DECAL, 'JUMP START'	1
10	1730913	DECAL, 'CAUTION BATTERY ISOLATOR'	1
11	1733733	STARTER ISOLATOR, COLE HERSEE	1
12	1730847	SWITCH, DOUBLE POLE BATTERY ISOLATOR	1
13	1731337	TAPE, PRISMATIC REFLECTIVE 50 mm	A/R
14	1737103	DECAL, 'VIN PLATE IDENTIFICATION'	1
15	1737063	REFLECTOR, AMBER	2
16	1737065	REFLECTOR, WHITE	2

FIGURE 3-3 MACHINE REAR VIEW LED-6 / LED-8 [D905/FB4 Genset]



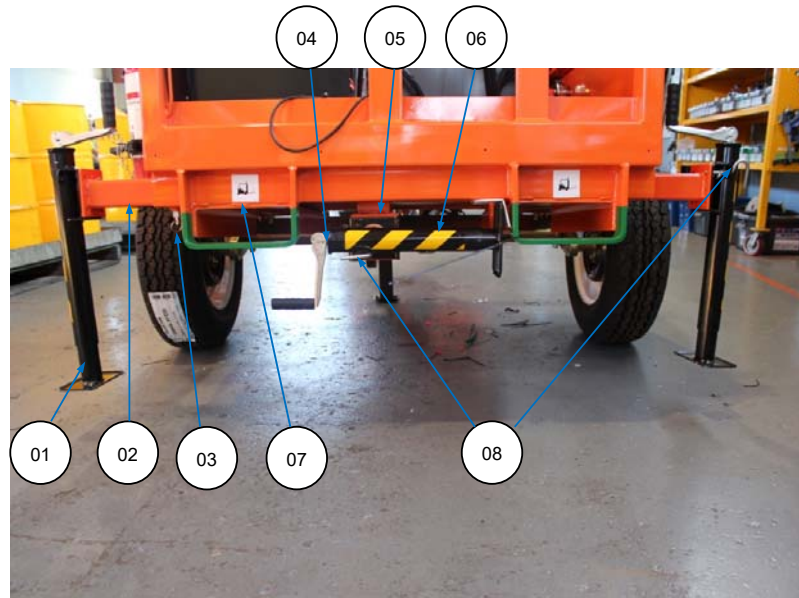
SEQ.#	ITEM NO.	DESCRIPTION	QTY
01	1001181720	PANEL, LED SERIES LT ROOF FINISHED	1
02	1731328	PANEL, REAR FINISHED	1
03	1730534	CRADLE, MAST SUPPORT	1
04	1732597	WEAR PAD, MAIN BOOM (MAST REST)	1
05	1001174354	LAMP, LICENCE PLATE	1
06	1734145	TAIL LAMP ASSEMBLY LED	2
07	1702300	DECAL, 'TIE-DOWN' POINT	2
08	1001172068	BEACON, LED LIGHTING TOWER	1
09	1737513	TAPE, RETRO-REFLECTIVE YELLOW	1

FIGURE 3-4 MACHINE SIDE VIEW LED-6 / LED-8 [Z482E/PM5G Roof Exhaust]



SEQ.#	ITEM NO.	DESCRIPTION	QTY
01	1001215741	SHROUD, EXHAUST PIPE	1
02		RIVETS, STEEL 3/16 " POP [GRIP 3 to 5 mm]	4

FIGURE 3-5 MACHINE LOWER REAR VIEW



SEQ.#	ITEM NO.	DESCRIPTION	QTY
01	A330010	OUTRIGGER, SIDE JACK ASSEMBLY	2
02	1734353	OUTRIGGER, SIDE EXTENSION ARM	2
03	3422744	PIN, SPRING LOADED PLUNGER	2
04	A330008	OUTRIGGER, REAR JACK ASSEMBLY	1
05	1733737	OUTRIGGER, REAR EXTENSION ARM	1
06	1737103	TAPE, REFLECTIVE BLACK/YELLOW	3
07	1703073	DECAL, 'FORKLIFT POINT'	2
08	1001265715	KIT, SWIVEL PIN 3/8" DL JACK	A/R

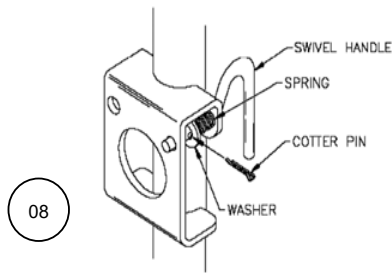
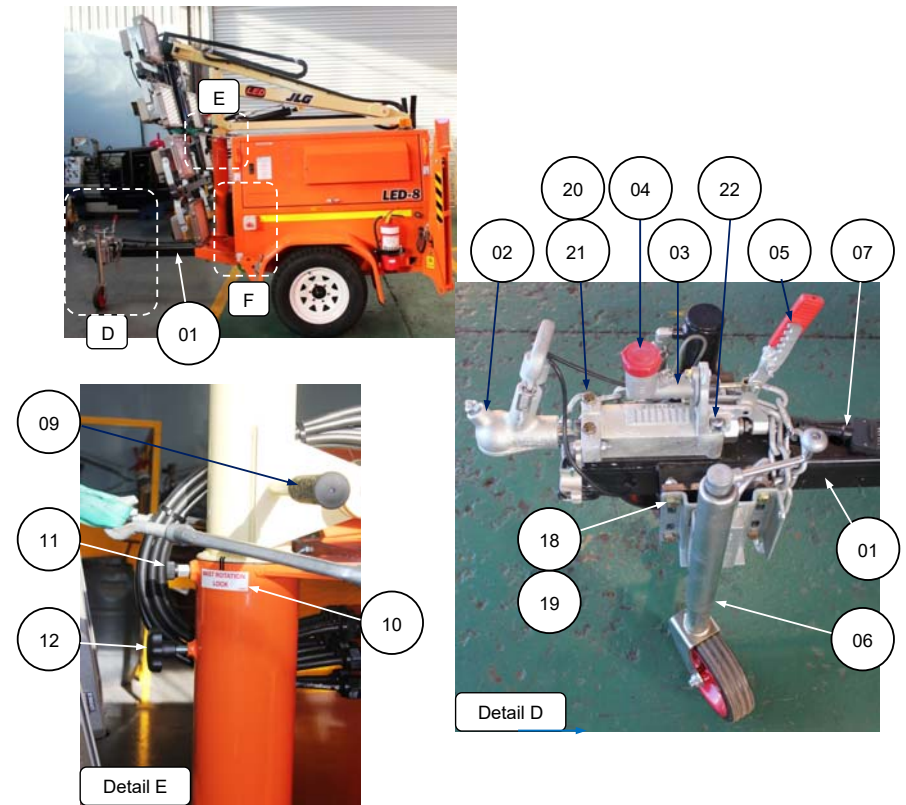
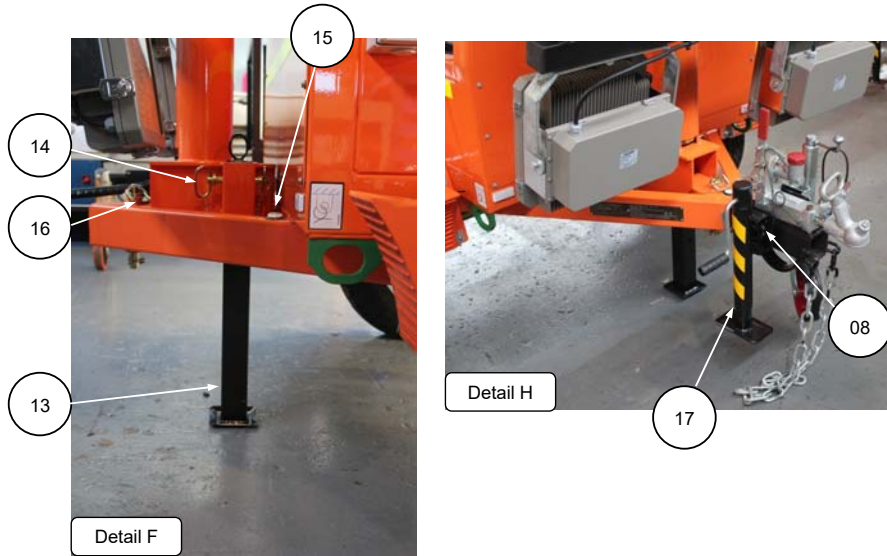


FIGURE 3-6 MACHINE FRONT



SEQ.#	ITEM NO.	DESCRIPTION	QTY
01	1730901	WELDMENT, FRONT DRAWBAR EXTENSION	1
02	1735456	COUPLING, OVERRIDE TOWBALL	1
20	0681828	1/2" UNC X 3.5" HEX HEAD BOLTS SAE GRADE 8	2
21	4891800	1/2" HARDENED FLAT WASHER	2
22	3931856	1/2" UNC X 3.5" SOCKET HEAD CAP SCREW ASTM 574	2
03	1737060	CYLINDER, HYDRAULIC BRAKE	1
04	1734707	CAP, HYDRAULIC BRAKE RESERVOIR	1
05	1730578	HANDLE, PARKING BRAKE	1

FIGURE 3-6 MACHINE FRONT



SEQ.#	ITEM NO.	DESCRIPTION	QTY
06	1730952	WHEEL, JOCKEY	1
07	1001172071	CABLE, 5C21B TRAILER	1
08	A330014	CIRCLIP, OUTRIGGER	4
09	1730797	GRIP, MAST ROTATE HANDLE	1
10	1730747	DECAL, MAST ROTATION LOCK	1
11	3422744	PIN, MAST INDEXING PLUNGER	1
12	1734165	KNOB, MAST ROTATE LOCKING	1
13	1730580	LEG, TRANSPORT	1
14	1733192	PIN, HITCH TRANSPORT LEG	1
	1733193	CHAIN, HITCH PIN RETAINING	1
15	1733106	BUBBLE, LEVELLING	1
16	1733267	PIN, DRAWBAR ASSEMBLY	1
17	A650235	JACK, FRONT OUTRIGGER (DRAWBAR)	1
18	0681812	BOLT, HEX SCREW 1/2" UNC-1.5" SAE GRADE 8	4
19	3271805	NUT, HEX NYLOC 1/2"UNC GRADE 6	4

FIGURE 3-7 FRONT PANEL

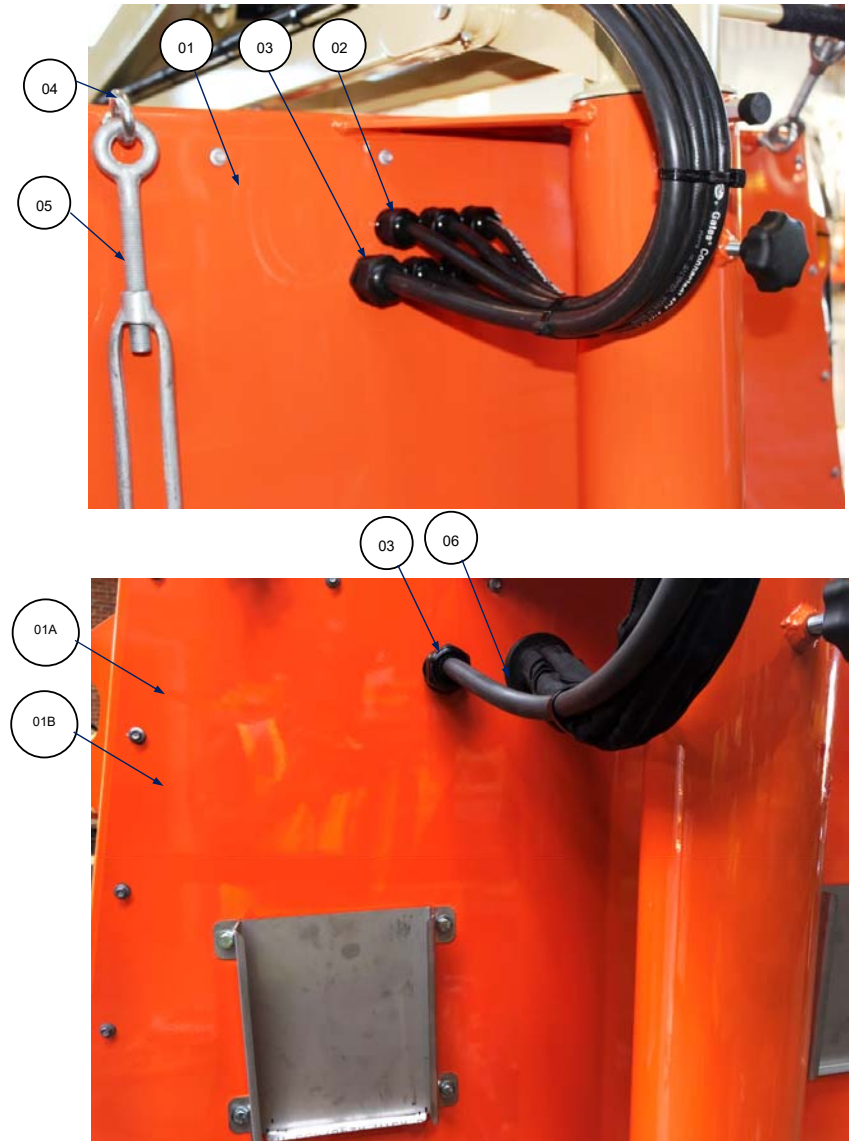
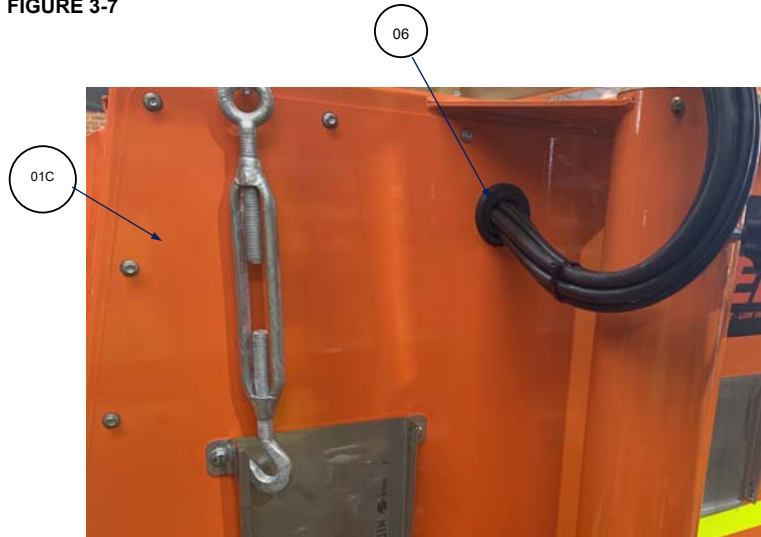
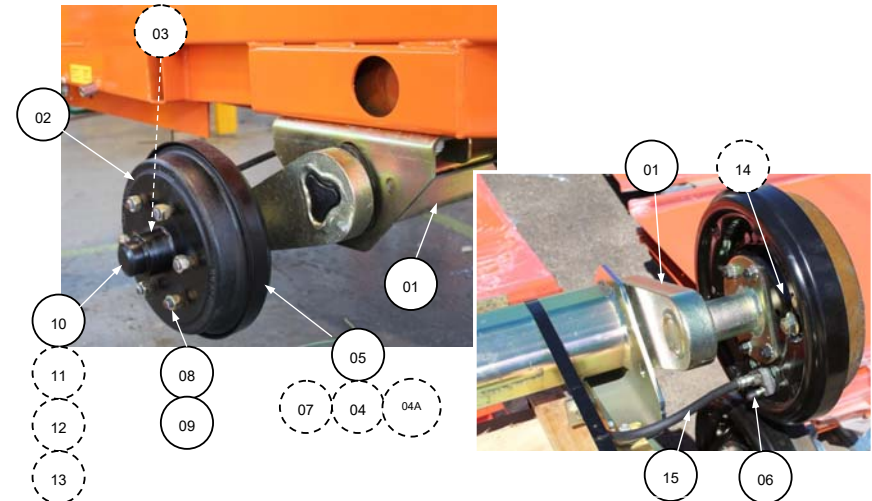


FIGURE 3-7



SEQ.#	ITEM NO.	DESCRIPTION	QTY
01	1001171811P	PANEL, FINISHED FRONT	1
01A	1001249000	PANEL, FRONT LED LT S/N: 2300L00311 TO S/N:2300L00351	1
01B	1001178818	PANEL, FRONT LED W/HYD OUTRIGGERS	1
01C	1001258903	PANEL, FINISHED FRONT (FROM S/N: 2300L00352)	1
02	1732412	GLAND, TERMINAL 25 mm NYLON	6
03	1732410	GLAND, TERMINAL 32 mm NYLON	1
04	1730759	EYEBOLT, M10 x 100 mm Zn PLATED	2
05	1001171971	TURNBUCKLE, GALVANISED 16 mm LED LT	2
06	1001179445	GROMMET, RUBBER BLACK LED LT	1

FIGURE 3-8 TRAILER AXLE AND WHEEL HUBS



SEQ.#	ITEM NO.	DESCRIPTION	QTY
01	1730891	AXLE ASSEMBLY C/W BRAKES (1650 kg RATING)	1
02	1730825	HUB, BRAKE DRUM	2
03	1730915	KIT, WHEEL BEARING AND SEAL	2
04	1730577	KIT, BRAKE SHOE	2
04A	1001303139	AXLE, BRAKE SHOE HOLD DOWN KIT	2
05	1734486	PLATE, PAIR BACKING	2
06	1730884	NIPPLE, BRAKE LINE BLEED	2
07	1730882	CYLINDER, WHEEL BRAKE DRUM	2
08	1730885	STUD, WHEEL	12
09	1730886	NUT, WHEEL	12
10	1730887	CAP, DUST	2
11	1730888	NUT, AXLE 3/4"UNF	2
12	1730889	WASHER, FLAT 3/4"	2
13	1730890	PIN, SPLIT 3.2 x 32	2
14	1730920	SEAL, WHEEL BEARING SEAL	2
15	1730766	KIT, BRAKE LINE (FOR AXLE ASSEMBLY 1730891) INCLUDES FOLLOWING ITEMS	1
	1733808	TUBE, DRAW BAR	(1)
	1733809	TUBE, SHORT LEFT	(1)
	1733810	TUBE, SHORT RIGHT	(1)
	1733811	FITTING, TEE	(1)
	1733812	HOSE, DRAWBAR BRAKELINE	(1)
	1733813	HOSE, AXLE BRAKELINE	(2)
	1733814	CLIP -RETAINING	(3)

FIGURE 3-9 RIGHT SIDE VIEW - KUBOTA D905 ENGINE

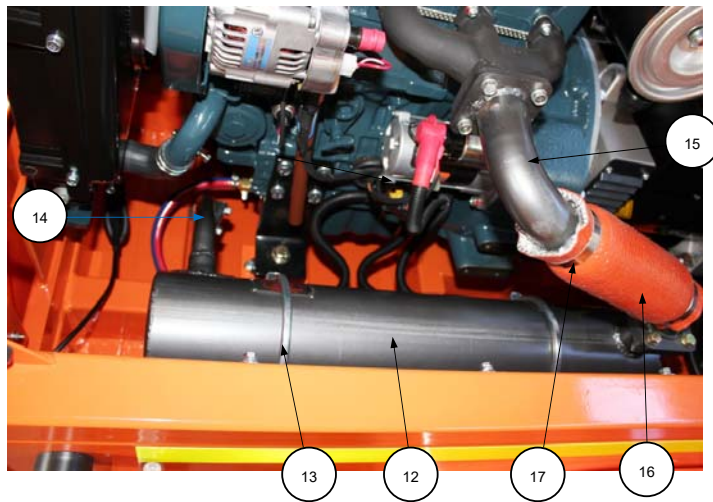
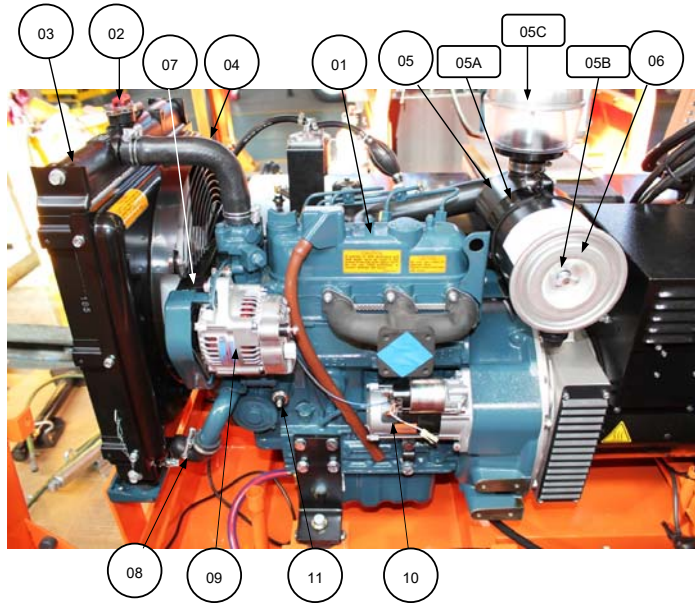


FIGURE 3-9 RIGHT SIDE VIEW – PARTS LIST KUBOTA D905 ENGINE

SEQ.#	ITEM NO.	DESCRIPTION	QTY
01	1001185703	ENGINE, D905 KUBOTA DIESEL KU1909411000	1
02	1001148786	CAP, PRESSURE RELEASE RADIATOR	1
03	1730953	RADIATOR, ENGINE D905	1
04	1730954	HOSE, RADIATOR TOP HOSE	1
05	1730964	HOUSING, D905 ENGINE AIR FILTER	1
05A	7026202	BAND, AIR CLEANER	A/R
05B	7017940	BOLT, WING	A/R
05C	1730768	FILTER, PRE-CLEANER BOWL (DONALDSON)	A/R
06	1730963	FILTER ELEMENT, D905 ENGINE AIR	1
07	1730962	BELT, D905 ENGINE FAN	1
		UPPER GUARD, D905 ENGINE FAN BELT	1
		LOWER GUARD, D905 ENGINE FAN BELT	1
08	1730962	HOSE, RADIATOR LOWER HOSE	1
09	1730956	ALTERNATOR, DENSO 12 V	1
10	7023144	MOTOR, D905 ENGINE STARTER	1
11	1730874	SENSOR, OIL PRESSURE	1
12	1001173464	MUFFLER, EXHAUST	1
13	1001175209	CLAMP, MUFFLER LED LT	2
14	1001171442	BRACKET, EXHAUST MOUNT	1
15	1001172069	TUBE, EXHAUST LED LT (MUFFLER KIT)	1
16	-	INSULATION, EXHAUST PIPE (MUFFLER KIT)	1
17	-	CLAMP, INSULATION (MUFFLER KIT)	2
18	1734178	PLATE, EXHAUST SHIELD (NOT SHOWN)	1

FIGURE 3-10 LEFT SIDE VIEW- KUBOTA D905 ENGINE

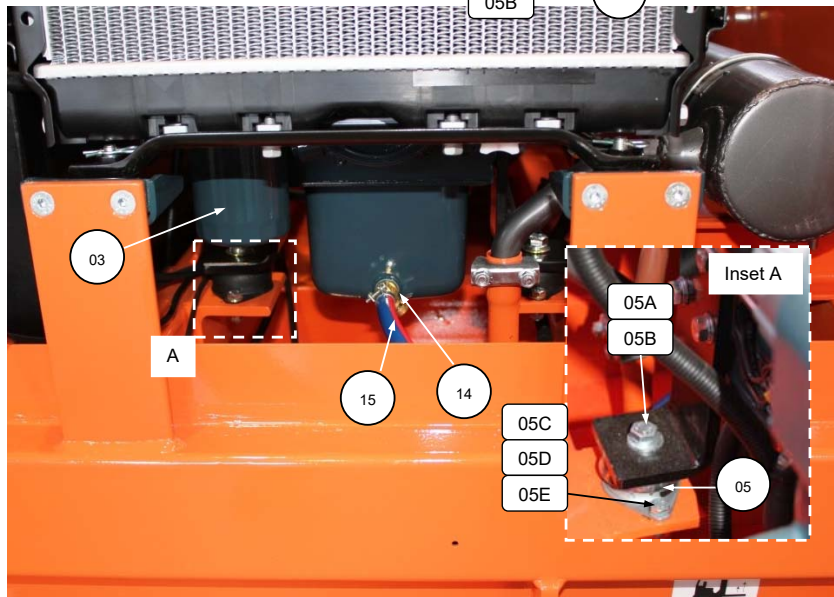
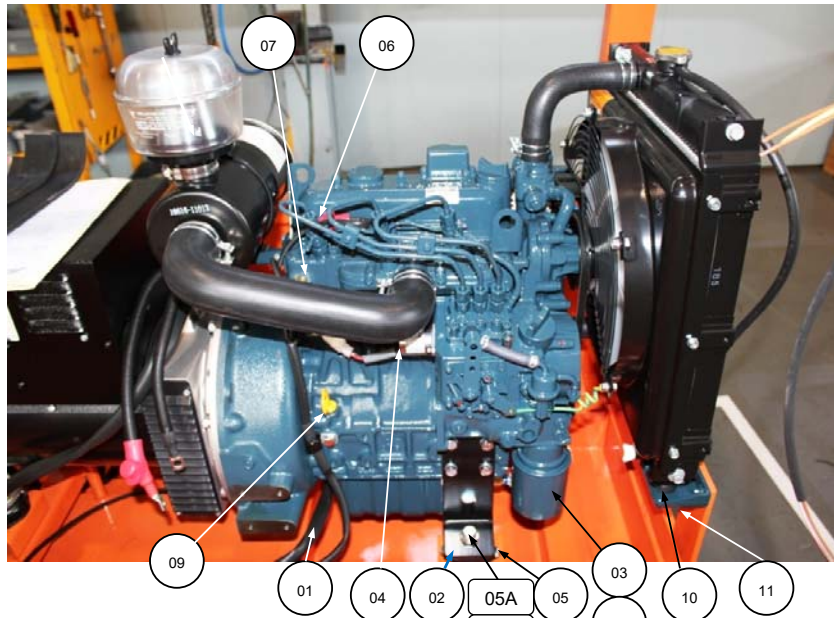


FIGURE 3-10 PARTS LIST

SEQ.#	ITEM NO.	DESCRIPTION	QTY
01	1001178292	LOOM, KUBOTA 905 ENGINE	1
02	1001171582P	BRACKET, ENGINE MOUNTINGS	2
03	2120929	FILTER, D905 ENGINE OIL	1
04	1730966	SOLENOID, ENGINE RUN	1
05	1001209186	MOUNT, ISOLATOR M135219 MD-D (REPLACE MOUNTS IN PAIRS)	2
05A	0711215	BOLT, HEX HEAD M12 x 35 CLASS 10.9	2
05B	4812100	WASHER, FLAT M12	2
05C	0760814	BOLT, HEX HEAD M8 x 30 CLASS 8.8	4
05D	3290805	NUT, HEX NYLOC M8 CLASS 8	4
05E	4811900	WASHER, FLAT M8	8
06	1730935	GLOW PLUGS D905	3
07	1730796	SENSOR, D905 ENGINE TEMPERATURE	1
08	1734130	BRACKET, RADIATOR MOUNT	2
09	1730907	DIPSTICK, ENGINE OIL	1
10	1734127	MOUNT, RADIATOR TOP	1
11	1734126	MOUNT, RADIATOR BOTTOM	2
12	16286-4343-0	HOLDER, FUEL FILTER (KUBOTA)	1
13	1001181346	FILTER, ENGINE FUEL FILTER	1
14	1001161497	DRAIN COCK, FUMOTO F103N	1
15	1733314	HOSE, ENGINE OIL DRAIN	1

FIGURE 3-11 FUEL TANK AND ACCESSORIES (PRIOR S/N: 2300L00352)

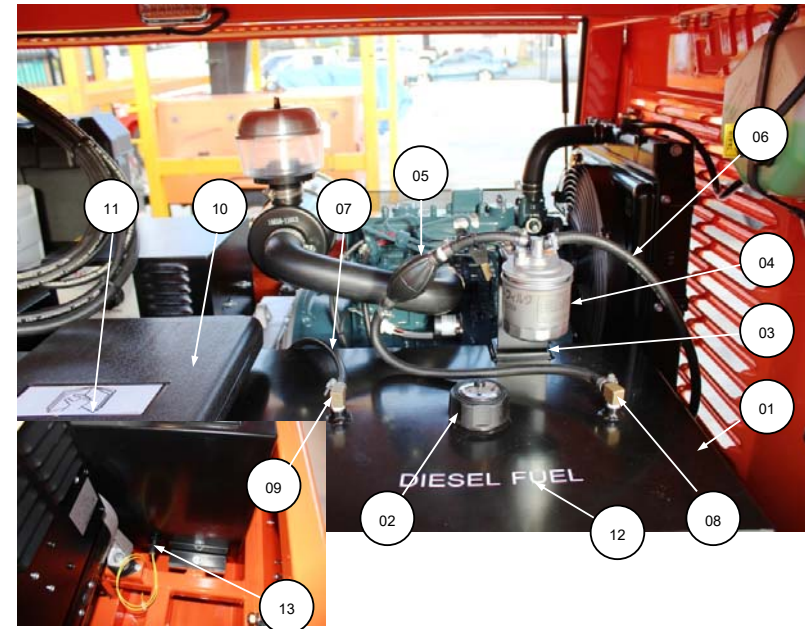
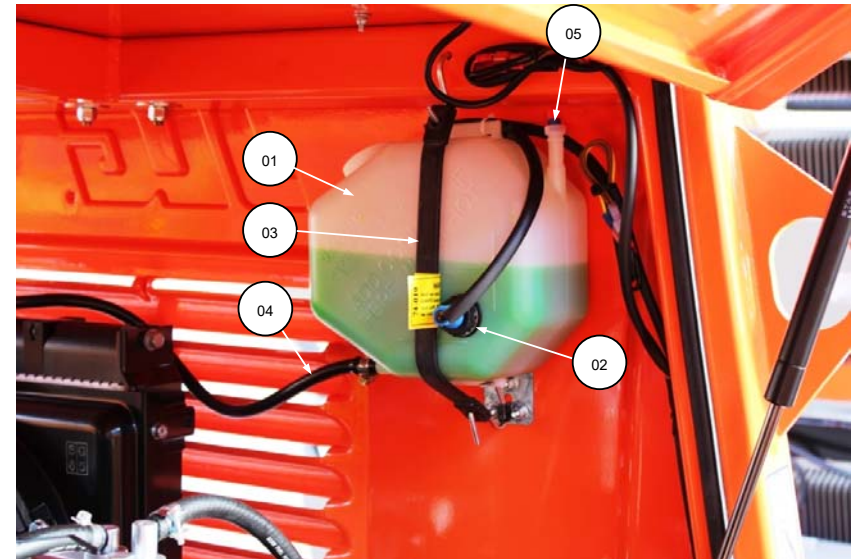


FIGURE 3-11 FUEL TANK AND ACCESSORIES (AFTER S/N: 2300L00352)



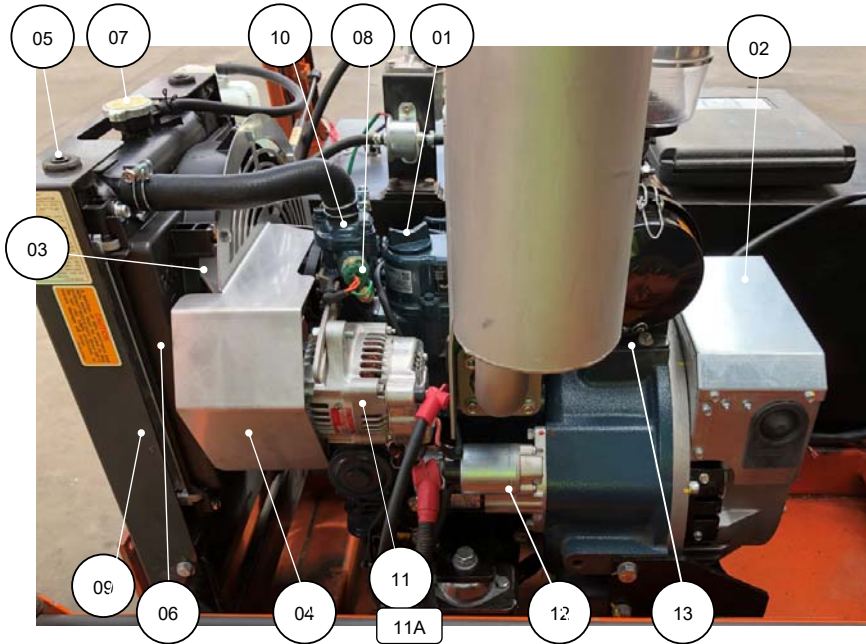
SEQ.#	ITEM NO.	DESCRIPTION	QTY
01	1001195796	KIT, FUEL TANK REPLACEMENT (KIT INCLUDES THE FOLLOWING PARTS)	-
-	1001170348	TANK, LED LT FUEL (PRIOR S/N:2300L00352)	1
-	1001195797	HARNESSE, FUEL LEVEL SWITCH (PRIOR S/N:2300L00352)	1
01A	1001256673	TANK, LED TOWER FUEL (AFTER S/N:2300L00352)	1
14	1001256406	SENSOR, SAG378 FUEL (AFTER S/N:2300L00352)	1
02	1001176826	CAP & GAUGE, LED LT FUEL TANK	1
03	1001171776	BRACKET, FUEL FILTER	1
04	1001181346	FILTER, ENGINE FUEL FILTER	1
05	1730815	PRIMER BULB, FUEL LINE	1
06	1735652	HOSE, FUEL DELIVERY-LINE 5/16"	1
07	1735652	HOSE, FUEL RETURN-LINE 3/16"	1
08	1001187892	ELBOW FITTING, 5/16" HOSETAIL-1/4"BSPT	1
09	1730939	ELBOW FITTING, 1/2" HOSETAIL-1/4" BSPT	1
10	0860520	BOX, MANUAL STORAGE	1
11	1701509	DECAL, PICTOGRAM-"STORAGE BOX"	1
12	1700200	DECAL, "DIESEL FUEL"	1
13	4360436	SWITCH, FUEL LEVEL (PRIOR S/N:2300L00352)	1

FIGURE 3-12 RADIATOR OVERFLOW (HEADER) BOTTLE



SEQ.#	ITEM NO.	DESCRIPTION	QTY
01	1730785	BOTTLE, RADIATOR OVERFLOW	1
02	1730918 1730919	SENSOR, WATER LEVEL KIT, WATER LEVEL SENSOR	1
03	1730791	KIT, RUBBER STRAP BRACKET, STRAP MOUNTING HOOK, STRAP HANGING	1 1 2
04	1730785	TUBING, HEADER TANK /RADIATOR	1
05	1320073	P-CLAMP, MODIFIED	1
06	1001175516	CHECK-VALVE, COOLANT BOTTLE	1

FIGURE 3-13 RIGHT SIDE VIEW – KUBOTA Z482E ENGINE



ITEM	PART NUMBER	DESCRIPTION	QTY
01	1001258445	ENGINE, KUBOTA Z482EG (1800 rpm)	1
02	1001258444	GENERATOR, PM5G 48V (1800 rpm)	1
	1001306076	CAPACITOR, PMG FOR 1800 RPM	-
	1001306398	RECTIFIER BRIDGE, 100A 3PH FOR 1800 RPM PMG	-
03	1001265356	FAN, RADIATOR Z482 EG ENGINE	1
-	1001269228	GUARD, ENGINE FAN Z482EG KU	A/R
04	1001272031	GUARD, FAN-BELT Z482EG	1
05	1001265318	MOUNT, RUBBER BUSH RADIATOR	4
06	1001265319	RADIATOR, Z482EG ENGINE	1
07	1001258616	CAP, RADIATOR KUBOTA Z482EG	1
08	1730796	SENDER, COOLANT TEMPERATURE	1
09	1001255887	MOUNT, Z482E RADIATOR	1
10	70004853	ASSEMBLY, WATER PUMP	1
11	1001265351	ENGINE, ALTERNATOR Z482 EG	1
11A	KU1754864422	ALTERNATOR ADJUSTING ARM	1
12	1001265354	ENGINE STARTER MOTOR	1
13	1001260704	MOUNTING BRACKET, Z482 AIR CLEANER	1
14	7346000126	FUSE HOLDER 12 GA INLINE	1
	8229245	FUSE, 30 A	1
15	KTMBFH	HOLDER, MAXI BLADE FUSE	1
	KTMBF50	FUSE, 50 A MAXI BLADE	1

FIGURE 3-14 REAR RIGHT VIEW - KUBOTA Z482E ENGINE

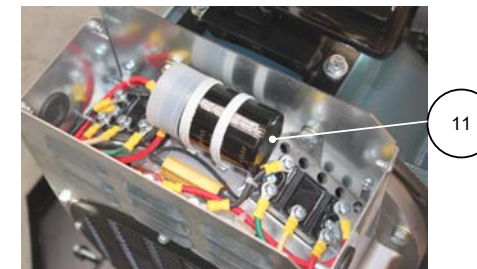
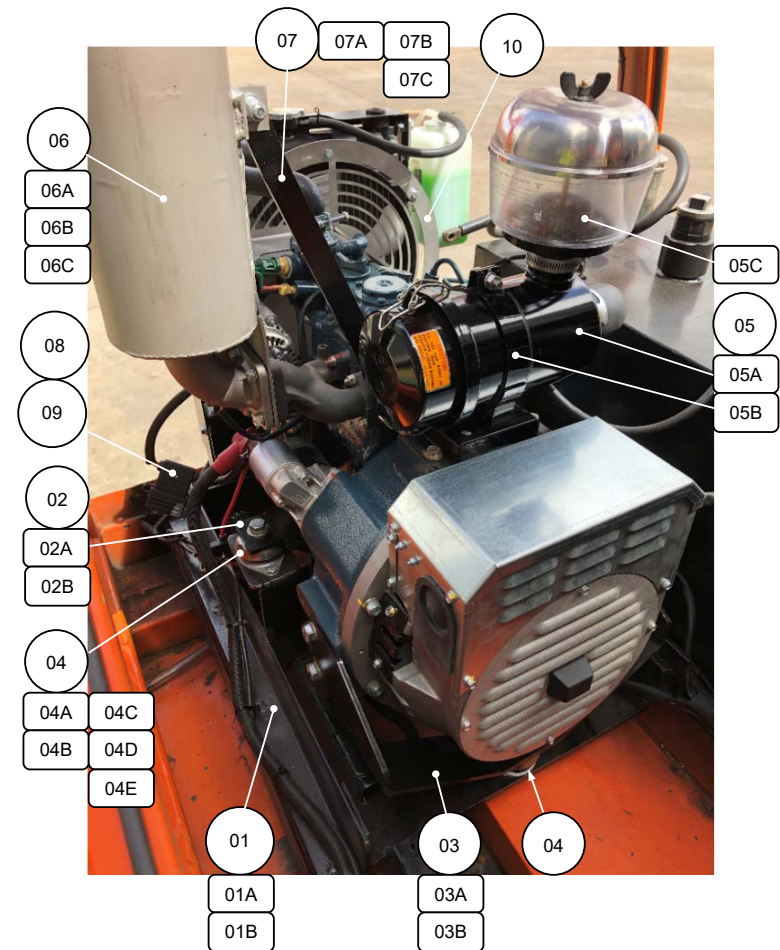


FIGURE 3-14 PARTS LIST

ITEM	PART NUMBER	DESCRIPTION	QTY
01	1001263931	FRAME, Z482E/PM5G CRADLE	1
01A	0760814	HEX HEAD SCREW, M8 X 1.25 - 30 CLASS 8.8 DIN 933	8 A/R
01B	5240800	FLAT WASHER, M8 HARDENED FORM A DIN 9201	8 A/R
02	1001263932	BRACKET, LED-6R Z482E ENGINE	2
02A	1001118746	HEX HEAD SCREW, M10 X 1.25 - 25 CLASS 8.8 DIN 933	8
02B	5241000	FLAT WASHER, M10 HARDENED FORM A DIN 9201	8
03	1001263933	SUPPORT, LED-6R PM5G	1
03A	0681808	HEX HEAD SCREW, 1/2" UNC X 1.0" SAE Grade 8 J	4
03B	4891800	FLAT WASHER, 1/2" X .187" THICK HARDENED RC 38-48	4
04	1001209186	MOUNT, ISOLATOR M135219 MD-D	3
04A	0761212	HEX HEAD SCREW, M12 X 1.75 - 25 CLASS 8.8 DIN 933	3
04B	5241200	FLAT WASHER, M12 HARDENED FORM B DIN 9201	3
04C	0760812	HEX HEAD SCREW, M8 X 1.25 - 25 CLASS 8.8 DIN 933	6
04D	5240800	FLAT WASHER, M8 HARDENED FORM A DIN 9201	12
04E	3290805	NYLOC NUT, M8 CLASS 8 DIN 985	6
05	1001212174	AIR FILTER, KUBOTA Z482	1
05A	7023174	AIR CLEANER/METAL HOUSING W7023174	2
05B	1001229321	BRACKET, Z482 AIR CLEANER	1
05C	1001118022	FILTER, PRE-CLEANER BOWL (DONALDSON)	1
06	1001211952	MUFFLER, LED-6R FLOWTECH	1
06A	1001264572	BRACKET, FLOWTECH MUFFLER	1
06B	4831900	SPRINGER WASHER, M8 TYPE B DIN 127	4
06C	3290801	HEX NUT, M8 x 1.25 CLASS 8 DIN 934	2
07	1001264571	BRACE, Z482E FLOWTECH MUFFLER	1
07A	0760808	HEX HEAD SCREW, M8 X 1.25 - 16 CLASS 8.8 DIN 933	2
07B	5240800	FLAT WASHER, M8 HARDENED FORM A DIN 9201	
07C	3290801	HEX NUT, M8 CLASS 8 DIN 980	
08	2400044	FUSE HOLDER ENGINE STARTER MOTOR	1
09	2400041	FUSE, 200 A ENGINE STARTER MOTOR	1
10	KU1G65974120	FAN GUARD, Z482E ENGINE	1
	1001272031	COVER, FAN-BELT KU Z482 ENGINE	1
11	1001306076	CAPACITOR, MECC-ALTE 9710303016	AR

Z482 ENGINE HARNESS CONNECTORS (NOT SHOWN)

ENGINE SPEED SENSOR (1001297172)

SEQ.#	ITEM NO.	DESCRIPTION	QTY
01	1001259285	CONNECTOR, FEMALE 3WAY SPEED SENSOR	1
02	1001259291	TERMINAL, FEMALE TE1188 SPEED SENSOR	3
03	1001259312	SEAL GREEN CA1082	3

COOLANT TEMP SENSOR

SEQ.#	ITEM NO.	DESCRIPTION	QTY
01	1001259274	CONNECTOR, FEMALE 2WAY TEMP SENSOR	1
02	1001259287	TERMINAL, FEMALE TE1176 TEMP SENSOR	2
03	1001259313	SEAL BROWN CA1086	2

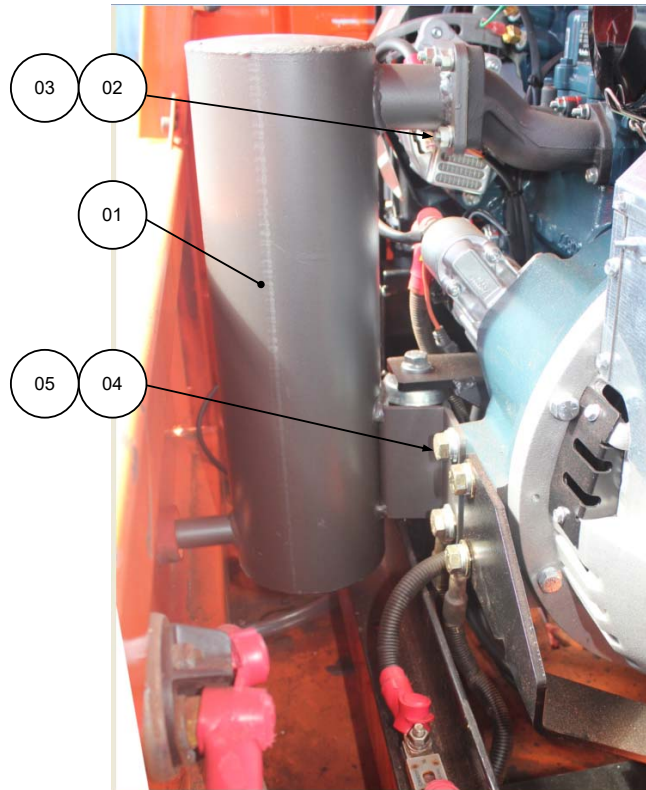
ACTUATOR SOLENOID (KU1E41160013)

SEQ.#	ITEM NO.	DESCRIPTION	QTY
01	1001259275	CONNECTOR, FEMALE 2WAY ACTUATOR	1
02	1001259290	TERMINAL, FEMALE TE1121 SOLENOID	2
03	1001259314	SEAL BLACK CA1085	2

ECU

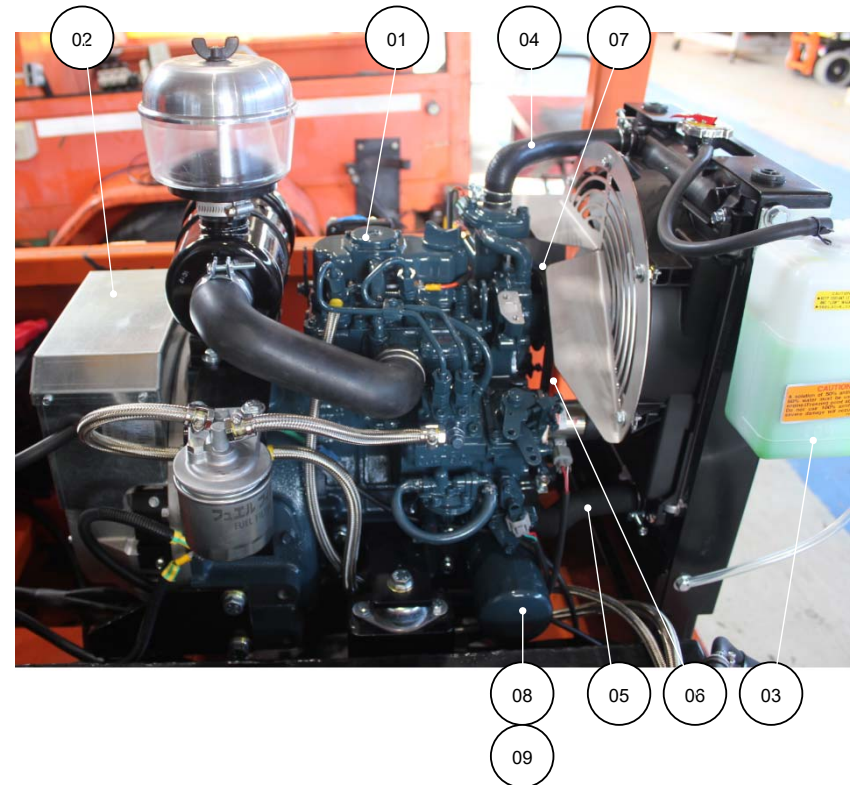
SEQ.#	ITEM NO.	DESCRIPTION	QTY
01	1001259273	CONNECTOR, FEMALE 44WAY ECU	1
02	1001259286	TERMINAL, FEMALE TE1831 ECU	21
03	1001259315	BLANKING PIN BLACK CA1192	23

FIGURE 3-15 Z482E MUFFLER (SIDE-PANEL TAILPIPE)



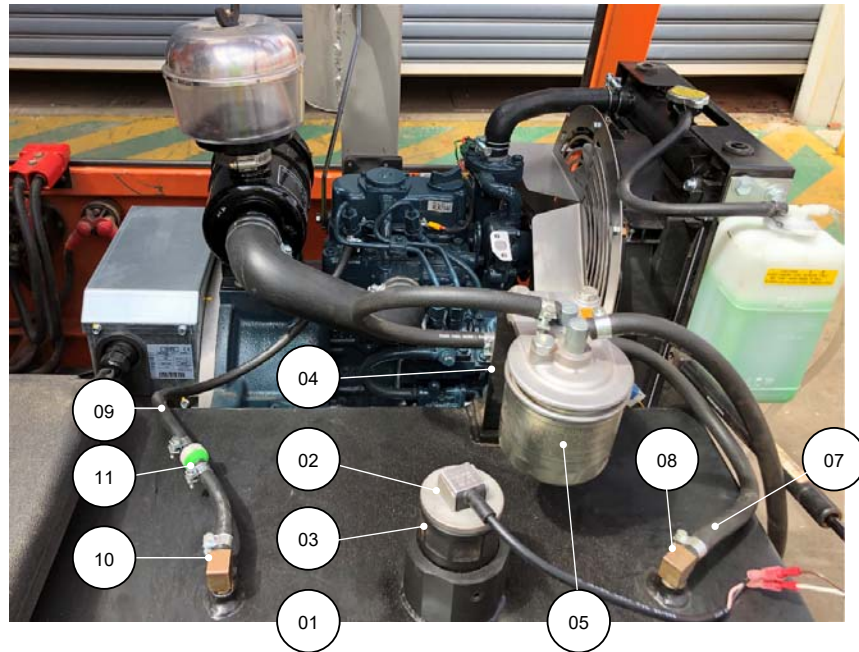
ITEM	PART NUMBER	DESCRIPTION	QTY
01	1001274341	MUFFLER, LED-6R FLOWTECH	1
02	5240800	SPRINGER WASHER, M8 TYPE B DIN 127	4
03	3290801	HEX NUT, M8 x 1.25 CLASS 8 DIN 934	4
04	4891800	FLAT WASHER, 1/2" X .187" THICK HARDENED RC 38-48	4
05	0681808	HEX HEAD SCREW, 1/2" UNC-13 GRADE 8 SAE J429	4

FIGURE 3-16 LEFT SIDE VIEW - KUBOTA Z482E ENGINE



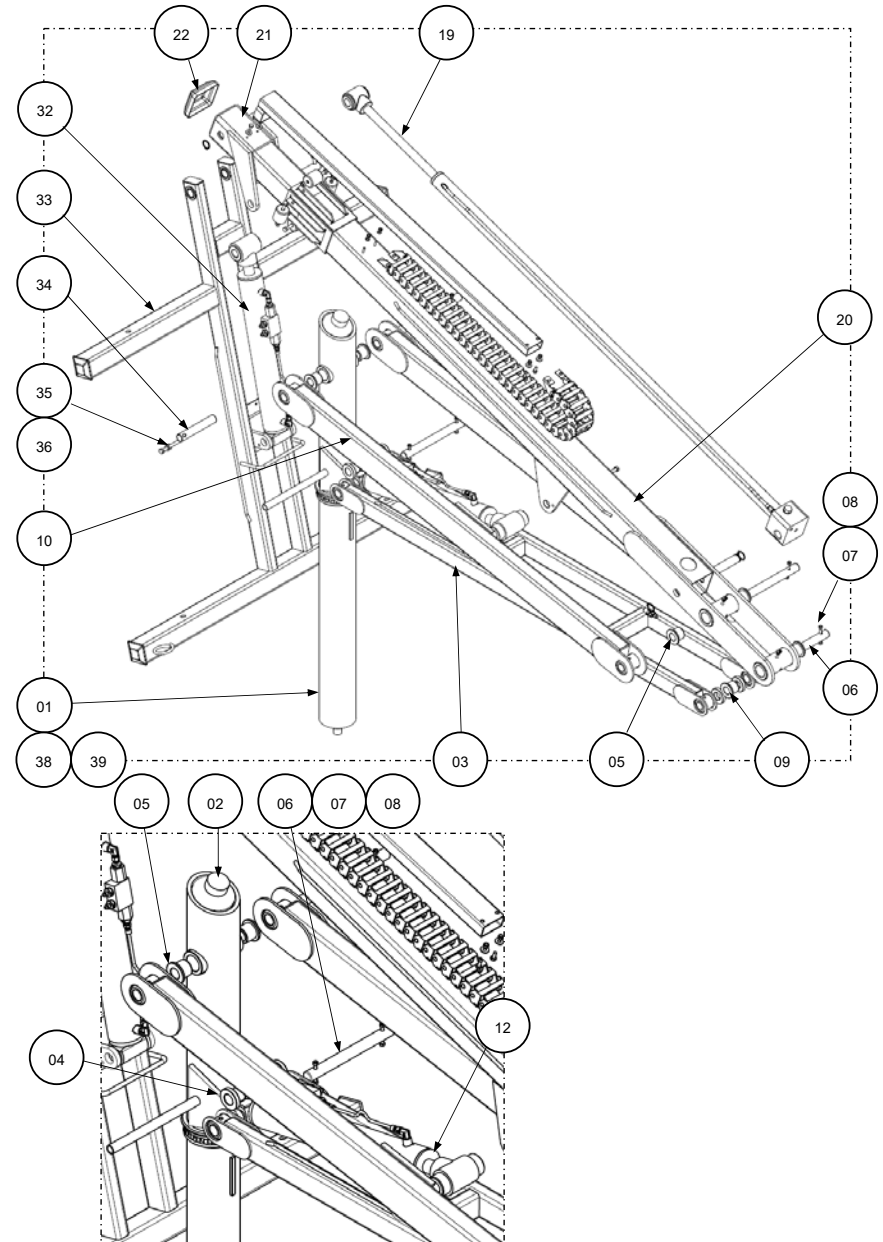
ITEM	PART NUMBER	DESCRIPTION	QTY
01	1001258445	ENGINE, KUBOTA Z482EG (1800 rpm) ELECTRONIC GOVERNOR	REF
02	1001258444	GENERATOR, PM5G - 48V (1800 rpm)	REF
	1001306076	CAPACITOR, PMG FOR 1800 RPM	-
	1001306398	RECTIFIER BRIDGE, 100A 3PH FOR 1800 RPM PMG	-
03	1001212181	CONTAINER, Z482 COOLANT BOTTLE	1
04	1001265320	HOSE, RADIATOR INLET (TOP)	1
05	1001265317	HOSE, RADIATOR OUTLET (BOTTOM)	1
06	1001265321	BELT, Z482E ENGINE FAN	1
07	1001272031	GUARD, FAN-BELT Z482EG	1
08	1001265352	FILTER, OIL Z482 EG ENGINE	1
09	1001265353	WASHER, PLAIN OIL FILTER SWAP	1
-	70000297	OIL PRESSURE SENDER	1

FIGURE 3-17 Z482E/PM5G FUEL TANK AND CABIN ACCESSORIES



ITEM	PART NUMBER	DESCRIPTION	QTY
01	1001170348 1001256673	FUEL TANK, LED-6 / LED-8	A/R
02	1001259061	SENSOR, AN STL TANK FUEL LEVEL	1
03	1001258181	ADAPTER-MECH, FUEL TANK SENDER	1
04	1001171776	BRACKET, FUEL FILTER	1
05	1001181346	FILTER, ENGINE FUEL	1
06	1001265403	FUEL PUMP, ELECTRIC	1
07	1735652	HOSE, FUEL SUPPLY-LINE 5/16"	1
08	1001187892	ELBOW FITTING, 5/16" HOSETAIL-1/4" BSPT	1
09	1735652	HOSE, FUEL RETURN-LINE 3/16"	1
10	1730939	ELBOW FITTING, 1/4" HOSETAIL-1/4" BSPT	1
11	1001265717	CHECK VALVE, FUEL RETURN LINE CHECK VALVE	1

FIGURE 3-18 MAST ASSEMBLY



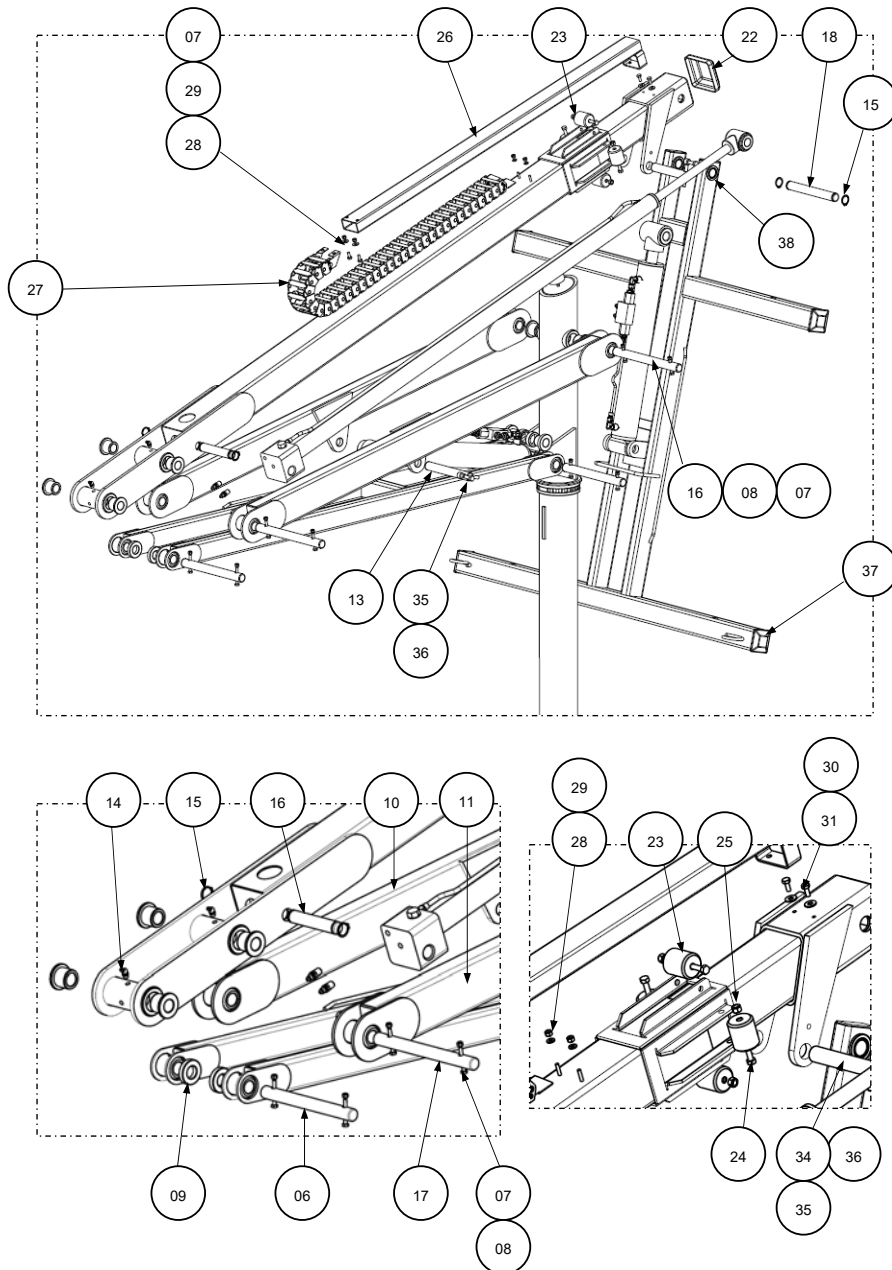
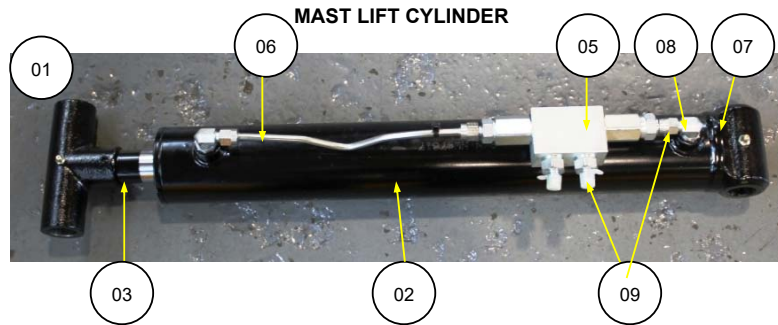


FIGURE 3-18 PARTS LIST

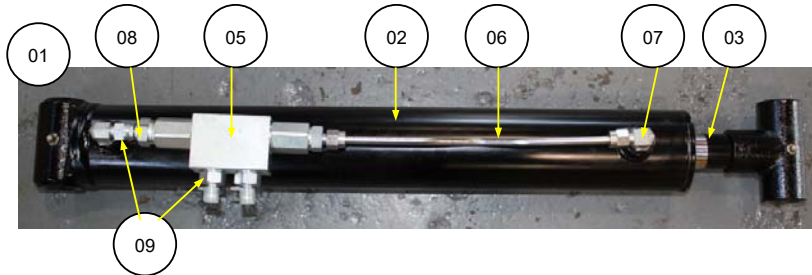
SEQ.#	ITEM NO.	DESCRIPTION	QTY
01	1730661	LOWER MAST – INNER (WELDMENT)	1
02	1730778	BUMPER, MAST SUPPORT	1
03	1730515	WELDMENT, OUTER LINK ARMS	1
04	1730513	FLANGED BUSH, ROUND MAST	2
05	1730511	FLANGED BUSH	6
06	1001173772	PIN, OUTER LINK ARM PIVOT	2
07	1734309	HEX NUT, NYLOC 1/4" UNC	10
08	0641416	HEX BOLT, 1/4"-20 UNC 2.0" LONG	6
09	1734299	SPACER, COLLAR	2
10	1730514	ARM, INNER LH LINK	1
11	1734352	ARM, INNER RH LINK	1
12	1733233	HYDRAULIC CYLINDER, MAST LIFT	1
13	1001173774	PIN, MAST LIFT-CYLINDER PIVOT	1
14	1731087	GREASE NIPPLE, 45° ANGLE 1/8" NPT	2
15	7011716	CIRCLIP, EXTERNAL 1.0"	4
16	1001173863	PIN, TELE-CYLINDER LOWER PIVOT	2
17	1001173773	PIN, INNER LINK ARM PIVOT	2
18	1001173862	PIN, LIGHT DROOP PIVOT	1
19	1733235	HYDRAULIC CYLINDER, TELE-MAST	1
20	1730517	TELE-MAST, OUTER SQUARE	1
21	1730516	TELE-MAST, INNER SQUARE	1
22	1730814	CAP, INNER SQUARE MAST GALVANISED	1
23	1730710	ROLLER, MAST CARRIER	4
24	0641522	BOLT, HEX HEAD 5/16"-18UNC – 2.75" LONG	4
25	1734471	NYLOC NUT, HEX HEAD 5/16" SAE GRADE 5	4
26	1730589	TUBE, CABLE CARRIER	1
27	1734586	ASSEMBLY, ENERGY CHAIN	1
28	4811700	WASHER, M6 FLAT WASHER	2
29	3290605	NYLOC NUT, HEX M6 x 1.0P	2
30	4751400	FLAT WASHER, 1/4" STEEL	4
31	0641405	SCREW, HEX HEAD 1/4"-20 UNC – 5/8" LONG	4
32	1733234	HYDRAULIC CYLINDER, DROOP TILT	1
33	1001170585P	LIGHT DROOP	1
34	1001173864	PIN, TILT-CYLINDER PIVOT	2
35	3841143	PIN, 3/8" KEEPER	3
36	0641608	SCREW, HEX HEAD 3/8"-16 UNC – 1.0" LONG	3
37	1001176386	CAP, LIGHT BAR END	4
	1001169783	DECAL, 'LED' (NOT SHOWN)	2
	1702009	DECAL, 'JLG' (NOT SHOWN) 3.5" HIGH	3
38	1731306	BUSH, LIGHT DROP MKII	2
39	4740418	WASHER THRUST – MAST BASE (NOT SHOWN)	2
40	3312605	HEX NUT NYLOC 1.0" UNC GRADE 8 (NOT SHOWN)	1

FIGURE 3-19 HYDRAULIC SYSTEM MAST CYLINDERS



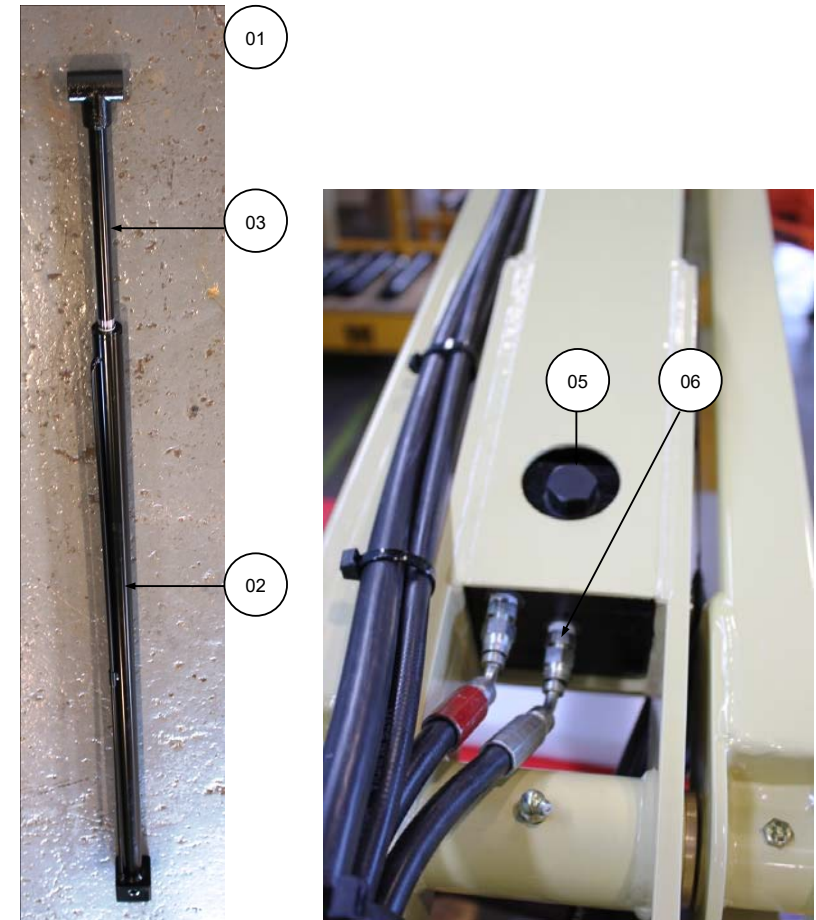
SEQ.#	ITEM NO.	DESCRIPTION	QTY
01	1733233	HYDRAULIC CYLINDER, MAST LIFT (COMPLETE)	1
02	1734220	BARREL, LIFT CYLINDER	1
03	1734221	ROD, LIFT CYLINDER PISTON	1
04	1731355	SEAL KIT, TILT/LIFT CYCLINDER (NOT SHOWN)	1
05	1730634	VALVE, DOUBLE PILOT CHECK	1
06	1734156	TUBING, LIFT CYLINDER HYDRAULIC	1
07	1733343	ELBOW, M/M 1/4"x 7/16"	2
08	1733344	ADAPTOR, STRAIGHT UNION M/F 1/4" x 7/16"	1
09	1734248	NIPPLE, M/M ENCAPSUALTED SEAL 1/4" x 7/16"	3

LIGHT DROOP TILT CYLINDER



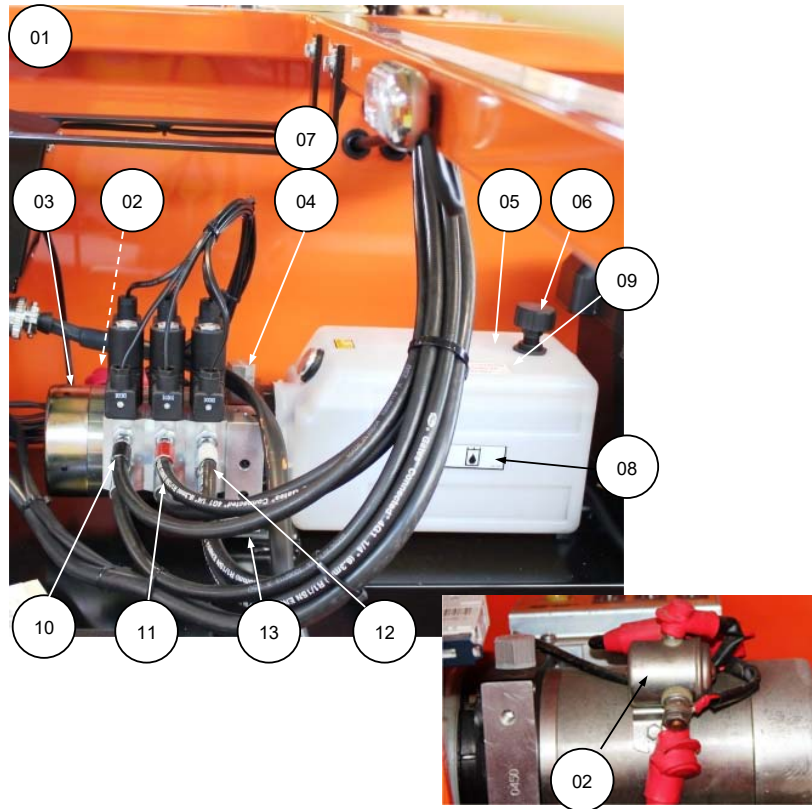
SEQ.#	ITEM NO.	DESCRIPTION	QTY
01	1733234	HYDRAULIC CYLINDER, DROOP TILT (COMPLETE)	1
02	1734222	BARREL, TILT CYLINDER	1
03	1734223	ROD, TILT CYLINDER PISTON	1
04	1731355	SEAL KIT, TILT/LIFT CYCLINDER (NOT SHOWN)	1
05	1730634	VALVE, DOUBLE PILOT CHECK	1
06	1734155	TUBING, LIFT CYLINDER HYRAULIC	1
07	1733343	ELBOW, M/M 1/4"x 7/16"	2
08	1733344	ADAPTOR, STRAIGHT UNION M/F 1/4" x 7/16"	1
09	1734248	NIPPLE, M/M ENCAPSULATED SEAL 1/4" x 7/16"	3

TELE-MAST HYDRAULIC CYLINDER



SEQ.#	ITEM NO.	DESCRIPTION	QTY
01	1733235	HYDRAULIC CYLINDER, MAST TELE (COMPLETE)	1
02	1734224	BARREL, TELE CYLINDER	1
03	1734225	ROD, TELE CYLINDER PISTON	1
04	1731356	SEAL KIT, TILT/LIFT CYCLINDER (NOT SHOWN)	1
05	4640438	VALVE, CHECK CARTRIDGE	1
06	1733345	NIPPLE, M/M ENCAPSUALTED SEAL 1/4" x 7/16"	3

FIGURE 3-20 HYDRAULIC SYSTEM POWERPACK STANDARD 3-DCV



SEQ.#	ITEM NO.	DESCRIPTION	QTY
01	1001170775	HYDRAULIC POWERPACK ASSEMBLY (3-DCV)	1
	1001183247	HARNESS, HYDRAULIC POWERPACK LED	1
02	1730549	SOLENOID, MOTOR RUN 12 V	1
03	1001177367	MOTOR, 12 V DC ELECTRIC	1
04	1001177366	VALVE, PRESSURE RELIEF CARTRIDGE	1
05	1001177372	TANK, KMD1-S1-P12 HYDRAULIC OIL	1
06	1001177434	FILLER, BREATHER CAP	1
07		COVER, PRESSURE RELIEF VALVE	1
08	1001159780	DECAL, 'HYDRAULIC OIL'	1
09	1001171972	DECAL, HYDRAULIC PRESSURE 19.25 MPa	1
10	1733346	HOSE KIT, MAST LIFT CYLINDER (GREEN/BLACK)	1
11	1733348	HOSE KIT, TELE-MAST CYLINDER (RED/SILVER)	1
12	1733347	HOSE KIT, DROOP TILT CYLINDER (BLUE/WHITE)	1
13	1731348	BRACKET, POWERPACK MOUNTING	1

FIGURE 3-21 HYDRAULIC SYSTEM POWERPACK OPTION 6 OR 7 DCV HYDRAULIC OUTRIGGER ARMS



SEQ.#	ITEM NO.	DESCRIPTION	QTY
01	1001170775	HYDRAULIC POWERPACK ASSEMBLY (3-DCV)	1
	1001183247	HARNESS, HYDRAULIC POWERPACK LED	1
02	1001177365	DCV, SV08-D12-B SLICE (COMPLETE)	A/R
02A	7012944	COIL, HYDRAFORCE (PRIOR SN: 2300L00211)	A/R
02A	1001228480	COIL, SV08B VALVE 12 V (AFTER SN:2300L0211)	A/R
02B	1001228481	VALVE, SV08B CARTRIDGE (NOT SHOWN)	A/R
02C	1001228482	VALVE, SV08B BODY (SLICE)	A/R
02D	1001228483	VALVE, SV08B 7-SLICE BOLT	A/R

FIGURE 3-22 HYDRAULIC SYSTEM OUTRIGGERS AND FRONT LEG (OPTION)

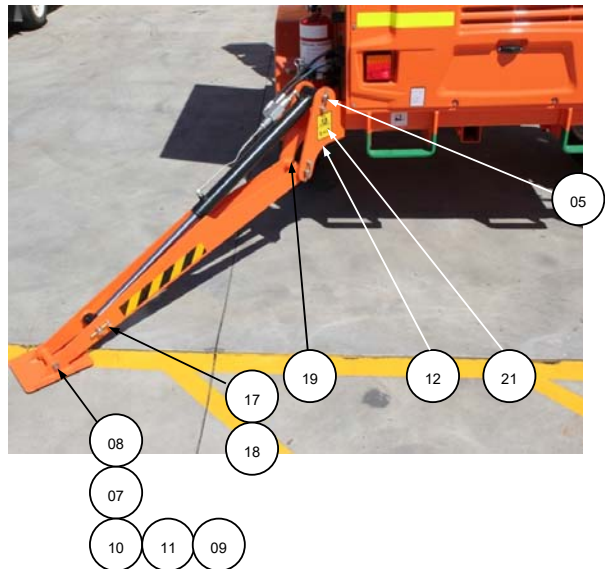
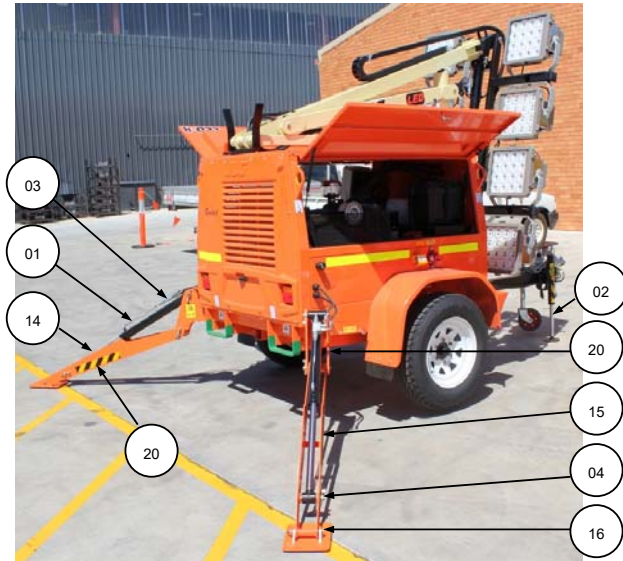
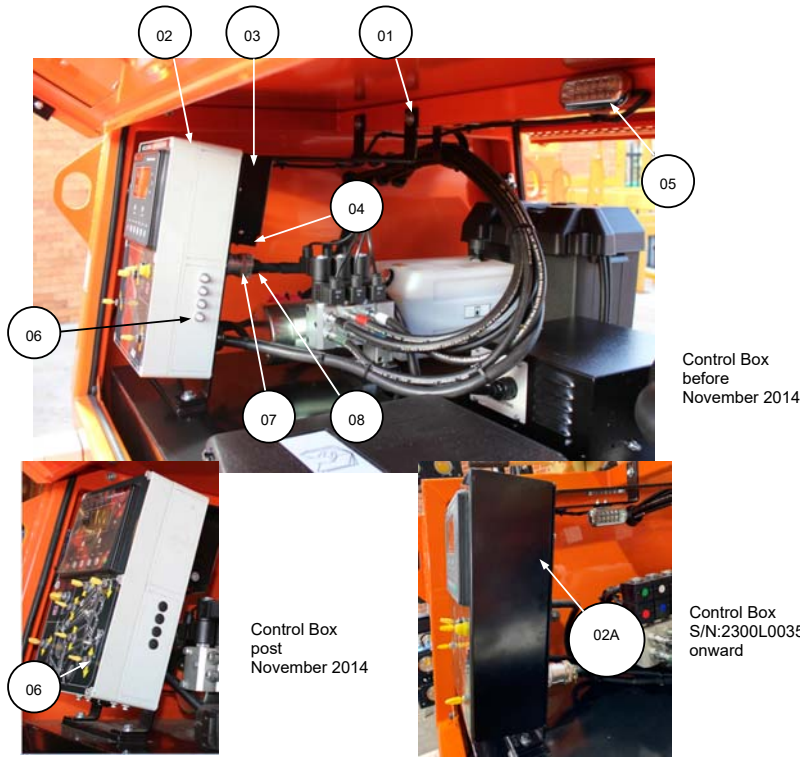


FIGURE 3-22 PARTS LIST

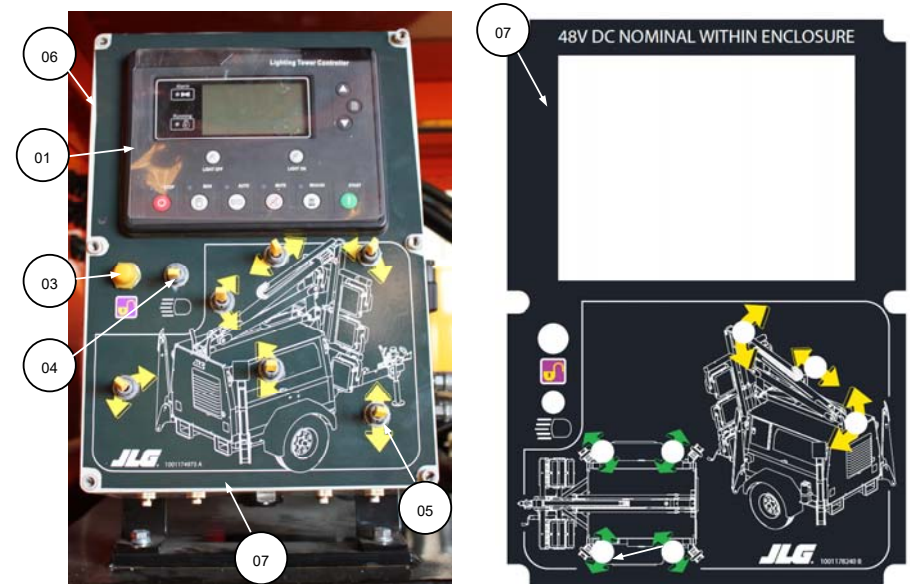
SEQ.#	ITEM NO.	DESCRIPTION	QTY
01	1730256	CYLINDER ASSEMBLY, REAR OUTRIGGER	2
02	1730257	CYLINDER ASSEMBLY, FRONT DRAWBAR	1
03	1730169	KIT, HYDRAULIC OUTRIGGER HOSE + FITTINGS	2
04	1730245	PIN, CYLINDER ROD END	2
05	1730441	PIN, LUG END	4
06	3841143	PIN, KEEPER	6
07	7011716	CIRCLIP, (RETAINING RING)	4
08	0684846	BOLT, HEX HEAD 1/2"UNC – 5/8" SAE GRADE 8	2
09	3271805	NUT, 1/2" UNC HEX NYLOC SAE GRADE 8	2
10	4711800	WASHER, STEEL 1/2" FLAT	4
11	1001161496	TUBE, CLEAR VINYL PLASTIC	2
12	1001161366	WELDMENT, OUTRIGGER LH REAR INSERT	1
13	1001161367	WELDMENT, OUTRIGGER RH REAR INSERT	1
14	1730249	LEG, LH OUTRIGGER	1
15	1730248	LEG, RH OUTRIGGER	1
16	1730244	FOOT PAD, OUTRIGGER	2
17	0681608	SCREW, HEX HEAD 3/8" UNC – 1.0" LONG	6
18	4761600	WASHER, 3/8" SPRING	6
19		GREASE NIPPLE, STRAIGHT 1/4"	4
20	1701785	DECAL, "CAUTION CRUSHING HAZARD"	5
21	1737100	REFLECTIVE TAPE, BLACK/YELLOW	5

FIGURE 3-23 ELECTRICAL SYSTEM CONTROL BOX



SEQ.#	ITEM NO.	DESCRIPTION	QTY
01	1001172070	MOUNT, CONTROL BOX	2
02	1001171774	BOX, LED LT CONTROL BASE (BEFORE S/N:2300L00352)	1
	1001171030	COVER (WITHOUT HYDRAULIC OUTRIGGER)	-
	1001174978	COVER (3-HYDRAULIC OUTRIGGER)	-
	1001178293	COVER (4-HYDRAULIC OUTRIGGER)	-
02A	1001255863	BOX, CONTROL LED STEEL (S/N:2300L00352 AND ON)	-
	1001255864	PLATE, C/BOX LED STEEL (S/N:2300L00352 AND ON)	-
	1001174358	ELEC ASSY, BUSBAR DUAL 150	-
03	1001171812	COVER, LED LT RELAY	1
04	1001171585	RELAY LED-6 LED-8	6 8
05	1001172006	LIGHT, LED LT INTERIOR	1
06	4360070	FUSE, ELECTRICAL 15 A	4
07	4460613	TERMINAL, 21 PIN SOCKET	1
08	4460614	TERMINAL, 21 PIN PLUG	1

FIGURE 3-24 ELECTRICAL SYSTEM MACHINE CONTROL PANEL(S)



SEQ.#	ITEM NO.	DESCRIPTION	QTY
01	1001171137	CONTROL, LED LIGHTING TOWER/ENGINE	1
02	1001170667	DECAL, LED TOWER CONTROL BOX	1
03	4360387	SWITCH, PUSH BUTTON (YELLOW)	1
04	4360336	SWITCH, TOGGLE 2-POSITION	1
05	4360328	SWITCH, TOGGLE 3-POSITION CENTRE-OFF (MACHINES WITH HYDRAULIC OUTRIGGERS)	3 (6)
06	1001171973	DECAL 'MAST CONTROL PANEL'	1
07	1001174975	DECAL 'MAST AND OUTRIGGER CONTROL PANEL'	1



FIGURE 3-25 ELECTRICAL SYSTEM BATTERY

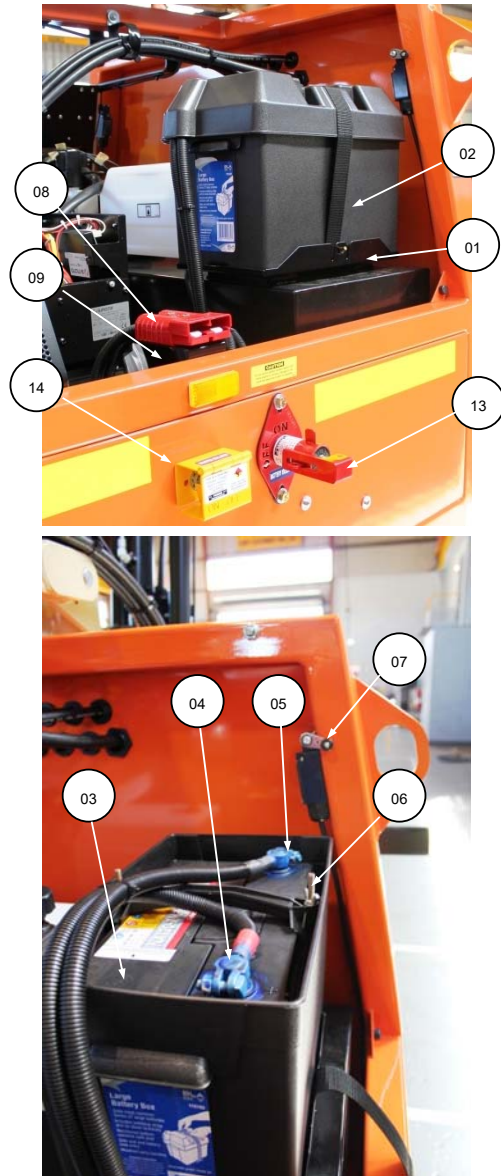
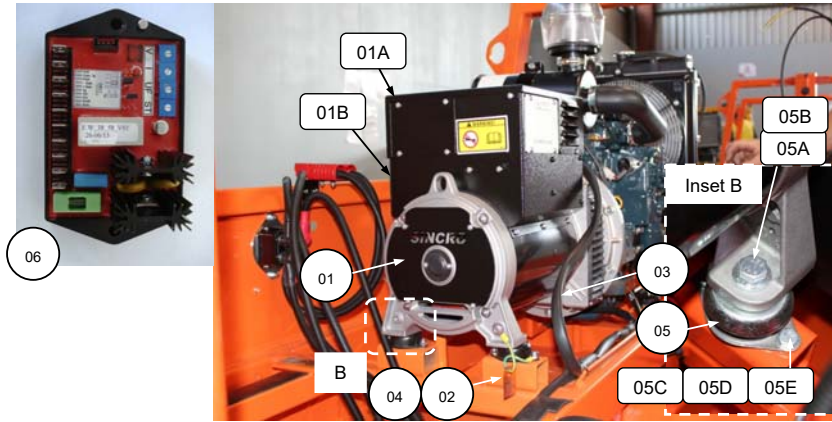


FIGURE 3-25 PARTS LIST

SEQ.#	ITEM NO.	DESCRIPTION	QTY
01	1731207	TRAY, BATTERY	1
02	1730861	BOX, LARGE BATTERY	1
03	0400003L/T	BATTERY, 12 V (ENGINE) (PRIOR S/N:2300L00352)	1
-	1001257140	BATTERY, 12VOLT 90AH (AFTER S/N:2300L00352)	1
04	1738283	TERMINAL, BATTERY LUG (+)/50	1
05	1738284	TERMINAL, BATTERY LUG (-)/50	1
06	1730727	CLAMP, BATTERY HOLD-DOWN	1
07	4360578	LIMIT SWITCH, ROLLER LEVER	2
08	4460618	PLUG, ANDERSON 'JUMP-START'	1
09	1001172002	BRACKET, 'JUMP-START' SOCKET	1
10	2400041	FUSE, STARTER MOTOR 25 A (NOT SHOWN)	1
-	1730850	BOOT, BATTERY TERMINAL 1/0 & 2/0 - RED	1
-	1730851	BOOT, BATTERY TERMINAL 1/0 & 2/0 - BLACK	1
13	1730847	SWITCH, DOUBLE POLE BATTERY ISOLATING	1
14	1733733	STARTER ISOLATOR, COLE HERSEE (1-PHASE)	1

FIGURE 3-26 ELECTRICAL SYSTEM GENERATOR



SEQ.#	ITEM NO.	DESCRIPTION	QTY
01	1001168664	GENERATOR, FB4 48 V / 100 A DC (PRIOR S/N: 2300L00350)	1
01	1001208963	GENERATOR, 9 PHASE SINCRO (AFTER S/N: 2300L00350)	1
01A	001231325	FB4/DC TERMINAL BOX UPPER SECTION	*
01B	1001231326	FB4/DC TERMINAL BOX LOWER SECTION	*
02	1730861	LEAD, GENERATOR EARTHING	1
03	1001178292	HARNESS, ENGINE LED LT WIRING	1
04	1734629	DECAL, 'MAIN EARTH TAG'	1
05	1001209186	MOUNT, ISOLATOR M135219 MD-D (REPLACE MOUNTS IN PAIRS)	2
05A	0711215	BOLT, HEX HEAD M12 x 35 CLASS 10.9	2
05B	4812100	WASHER, FLAT M12	2
05C	0760814	BOLT, HEX HEAD M8 x 30 CLASS 8.8	4
05D	4811900	WASHER, FLAT M8	8
05E	3290805	NUT, HEX NYLOC M8 CLASS 8	4
06	1001187612	CONTROL, SINCRO 154520 AVR DBC1 CARD	1
-	1001221700	BASE, SINCRO AVR CARD 106244	A/R
-	1001221701	BACK PLATE, SINCRO AVR CARD 7006	A/R
-	1001204254	KIT, DC LED CAPACITOR MOUNT	A/R

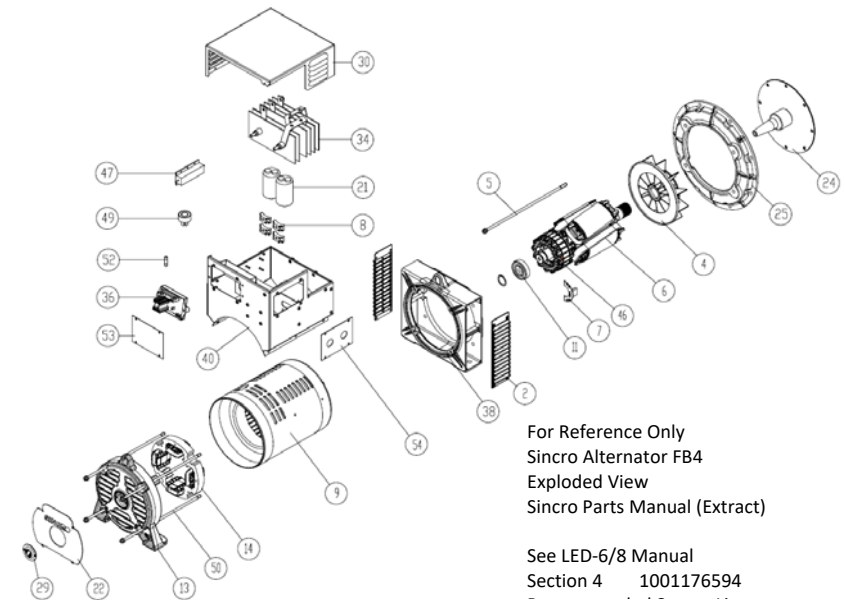
* When ordering replacement generator parts please quote the generator's make, type, code and serial number listed on the maker's label affixed to the generator terminal box.



FIGURE 3-26 ELECTRICAL SYSTEM GENERATOR



SEQ.#	ITEM NO.	DESCRIPTION	QTY
01C	1001228891	BOX, SINCRO FB4 TERMINAL SINCRO S/N PRIOR TO 430146	*
01D	1001231297	TOP COVER, SINCRO FB4 TERMINAL BOX SINCRO S/N PRIOR TO 430146	*



For Reference Only
Sincro Alternator FB4
Exploded View
Sincro Parts Manual (Extract)

See LED-6/8 Manual
Section 4 1001176594

FIGURE 3-27 FLOODLIGHT LED TYPE 1

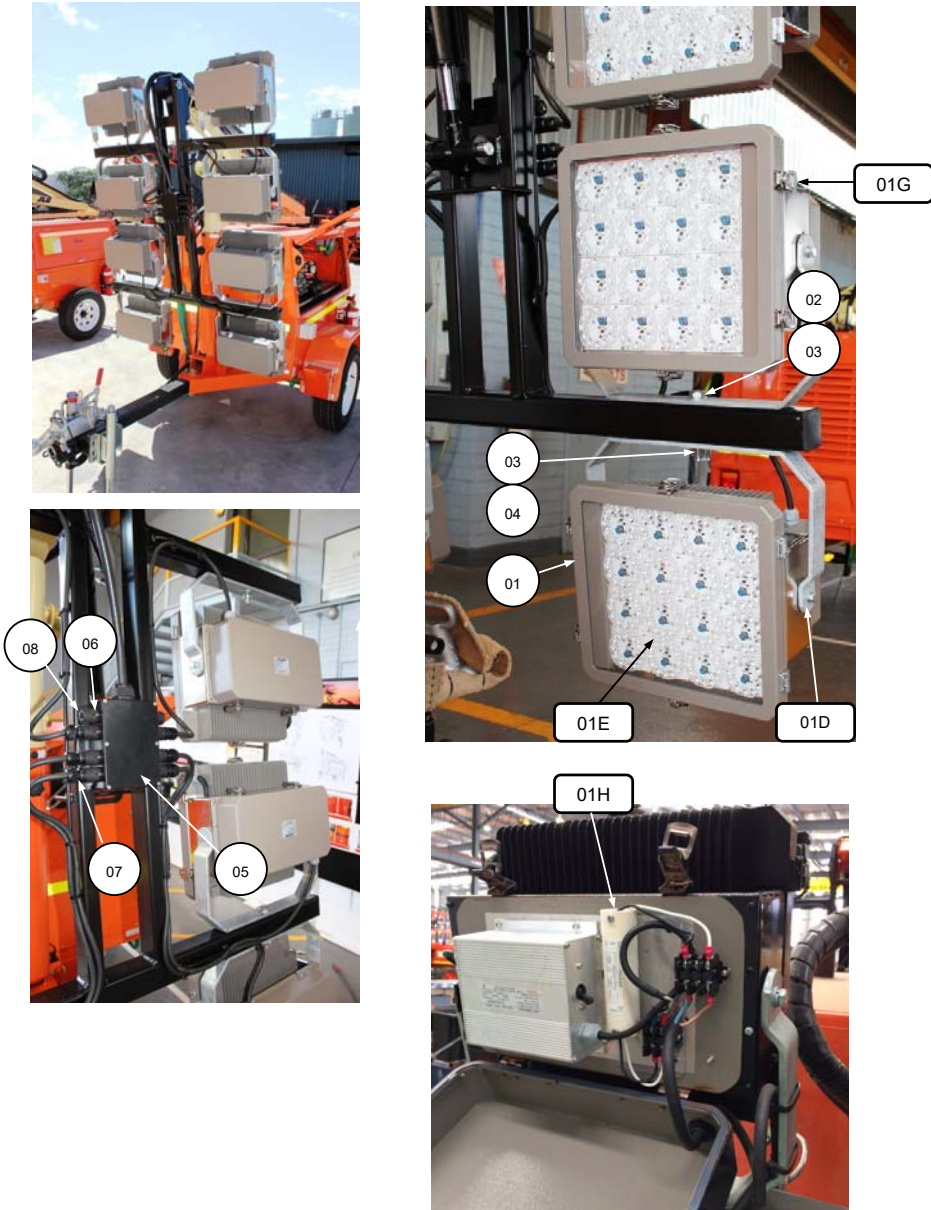


FIGURE 3-27 PARTS LIST

SEQ.#	ITEM NO.	DESCRIPTION	QTY
01	1001168799	LAMP ASSEMBLY, 48 V / 100 A LED LED-6 LED-8	6 8
01A	1001180322	ELECTRONICS ASSY, LED-MODULE Z93612	A/R
01B	1001180321	REFLECTOR, LED LENS Z93602 35 DEGREE	A/R
01C	1001180320	ELECTRONIC ASSY, STABILISER Z93613	A/R
01D	1001184059	MOUNT, TETHYS Z77045 TRUNNION	A/R
01E	99030426	LENS GLASS, TETHYS MKI	A/R
01F	1001204255	REGULATOR, TVS MODULE (LED) BOX (UPGRADE)	A/R
01G	1001225124	PC BOARD, LED-6/8 TVS MODULE	A/R
01H	1001217123	LATCH, LED LIGHT FIXTURE	A/R
	1001228386	KIT, TVS MODULE MK II (FIELD)	A/R
	1001226223	TVS MODULE FUSE, E 20 A/250 V P-314 (NOT SHOWN)	A/R
02	0711628	BOLT, HEX HEAD M16 x 2.0P-110 LG CLASS 8.8	4
03	3291605	NUT, HEX HEAD NYLOC M16 x 2.0P CLASS 8	4
04	1001092256	FLAT WASHER, STEEL M16 140 HV (MIN)	8
05	1001171031	TERMINAL BOX, LED LIGHT DROOP	1
06	1001170349	SOCKET, HIRSCH C16-1 3+PE CHASS	8
07	1001170351	PLUG, HIRSCH C16-1 3+PE LINE	6 (8)
08	1001170350	DUSTCAP, HIRSCH C16-1	2 (0)
09	1001170352	CABLE, LED MAST JZ-500 18-CORE 2.5 mm (PRIOR SN: 2300L00352)	10.4M
	1001256966	CABLE, 12 CORE 2.5MM (AFTER S/N:2300L00352)	10.4M
10	1001170353	CABLE, LED LIGHT JZ-500 2-CORE 2.5 mm	6(8)
11	1732412	GLAND, TERMINAL BOX 32 mm	1

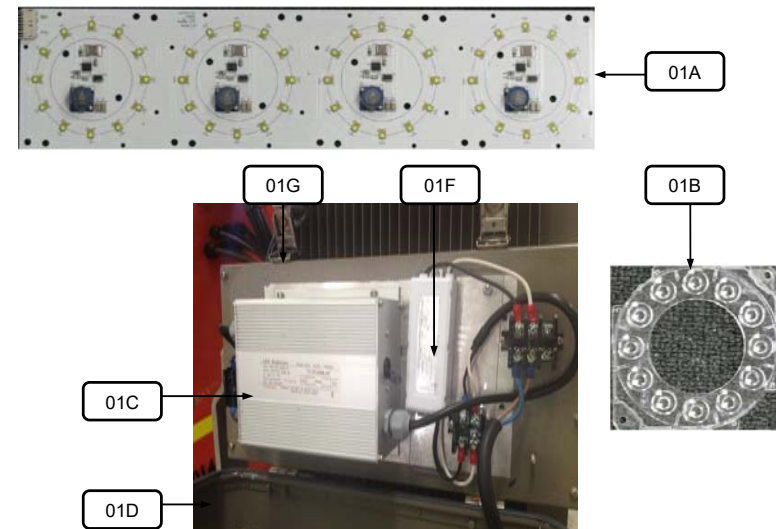


FIGURE 3-28 FLOODLIGHT LED TYPE 2

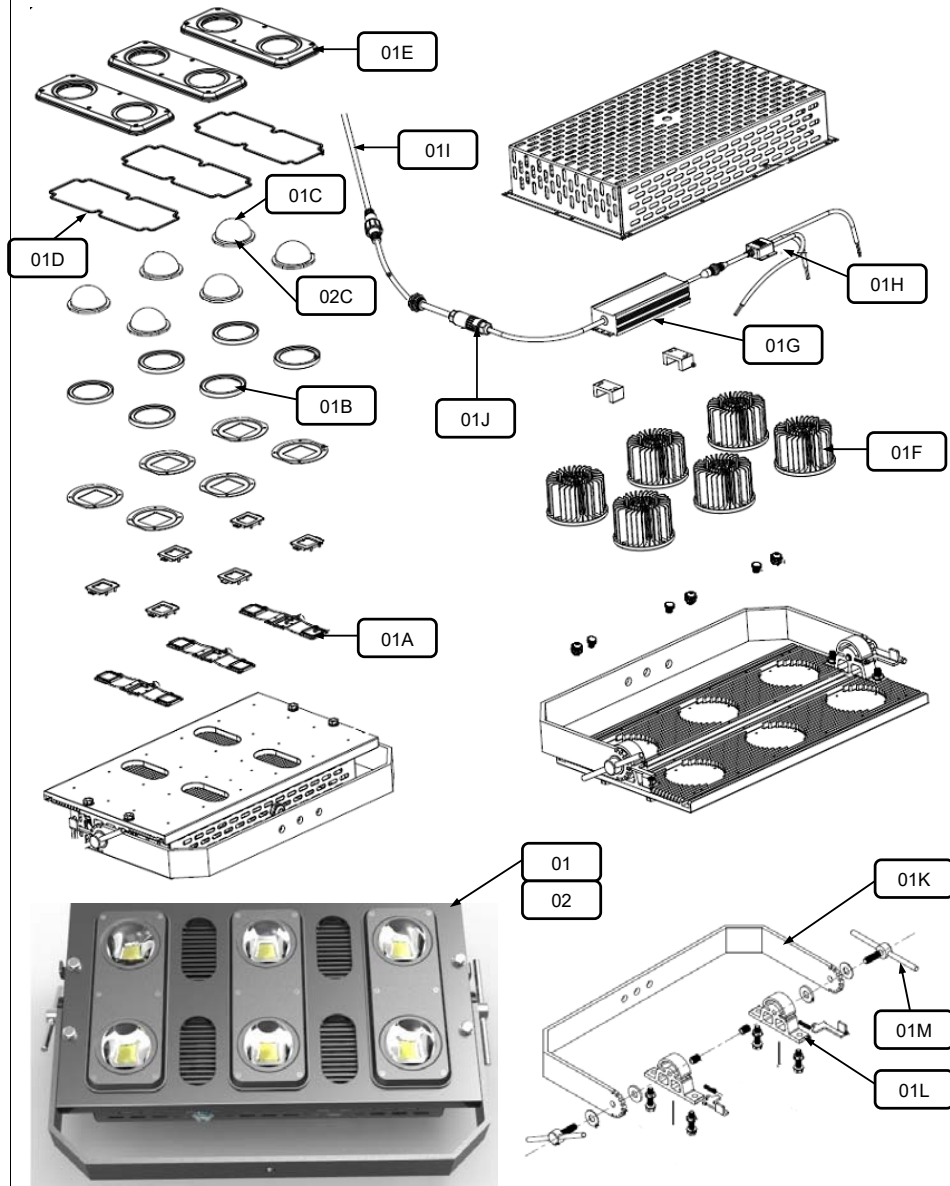


FIGURE 3-28 FLOODLIGHT LED TYPE 2



SEQ.#	ITEM NO.	DESCRIPTION	QTY
01	1001187536	LAMP, LED 400W 48VDC SINCRO 110	2
01A	1001217390	LAMP, LED SOURCE IWE 400	A/R
01B	1001217391	LAMP, GASKET LED IWE 400	A/R
01C	1001217392	LAMP, LENS 110 DEGREE LED IWE 400 W	A/R
01D	1001217393	LAMP, LENS GASKET LED IWE 400 W	A/R
01E	1001217394	LAMP, LENS COVER, IWE 400 W	A/R
01F	1001217395	LAMP, HEAT SINK LED IWE 400 W	A/R
01G	1001217396	LAMP, DRIVER LED IWE 400 W	A/R
01H	1001217397	LAMP, 3WAY CONNECTOR LED IWE	A/R
01I	1001217129	LAMP, CABLE LED IWE 300W & 400 W	A/R
01J	1001217399	LAMP, CONNECTOR LED IWE 400 W	A/R
01K	1001217400	LAMP, TRUNNION LED IWE 400 W	A/R
01L	1001217401	LAMP, TRUNNION MOUNT IWE 400 W	A/R
01M	1001244431	LAMP, TRUNNION TEE-BOLT S/S IWE 400 W	A/R
02	1001187535	LAMP, LED 400W 48VDC SINCRO 45	4
02C	1001217919	LAMP, LENS 45 DEGREE LED IWE 400W	A/R

FIGURE 3-29 FLOODLIGHT LED TYPE 3

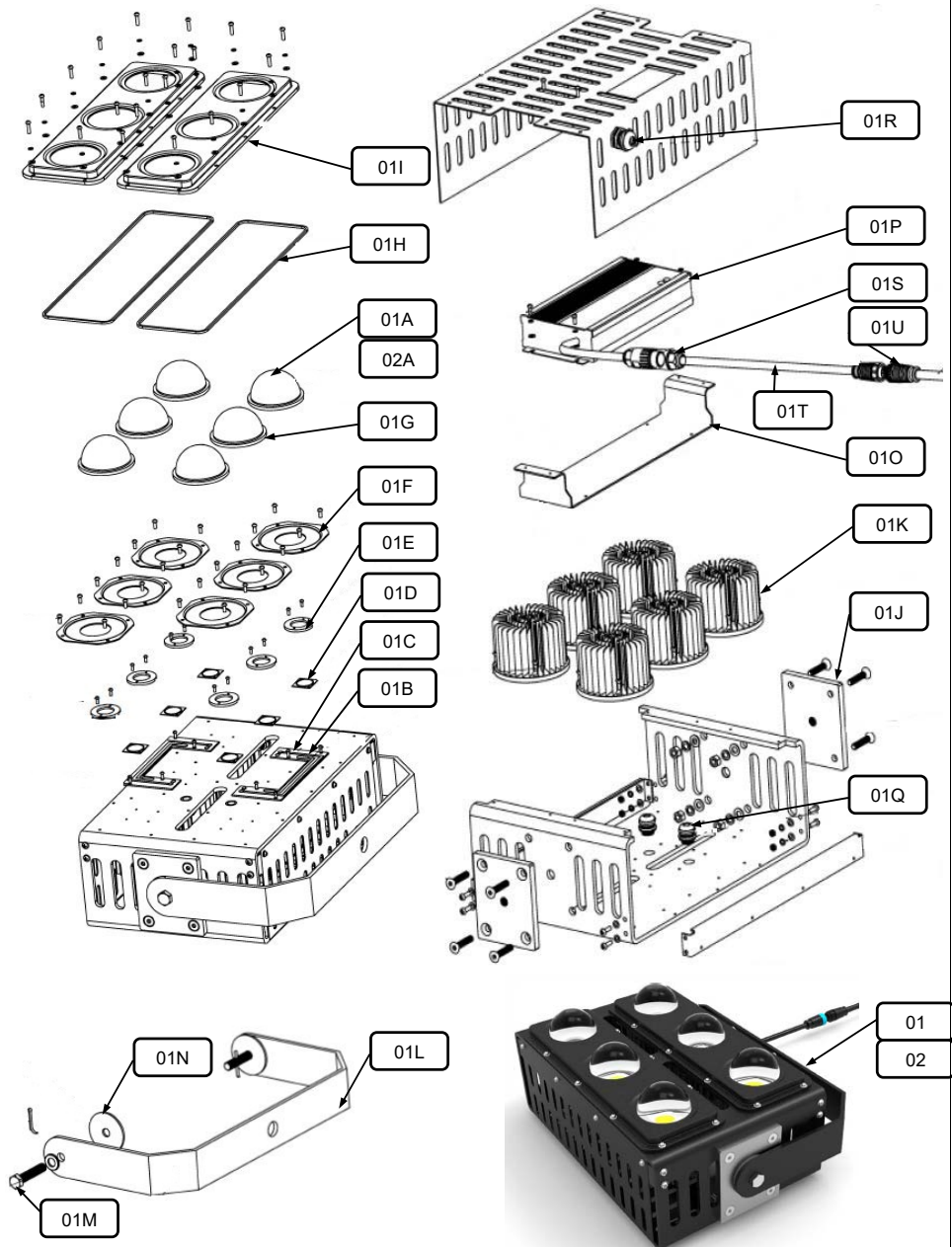
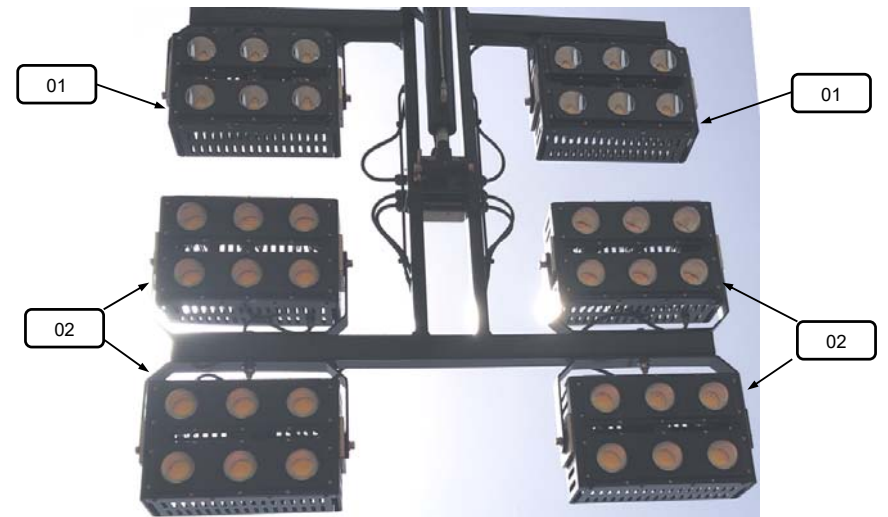


FIGURE 3-29 FLOODLIGHT LED TYPE 3



SEQ.#	ITEM NO.	DESCRIPTION	QTY
01	1001247348	LAMP, PL6F-400W-DC48V 110 DEGREE	2
01A	1001252562	LAMP, LENS 110 DEGREE 400W	A/R
01B	1001252544	LAMP, CIRCUIT BOARD 400W	A/R
01C	1001252545	LAMP, INSULATOR 400W	A/R
01D	1001252546	LAMP, COB LIGHT SOURCE 400W	A/R
01E	1001252547	LAMP, LIGHT SOURCE COVER 400W	A/R
01F	1001252548	LAMP, LENS PLATE 400W	A/R
01G	1001252549	LAMP, LENS SEAL 400W	A/R
01H	1001252550	LAMP, LENS PLATE GASKET 400W	A/R
01I	1001252551	LAMP, LENS COVER 400W	A/R
01J	1001252552	LAMP, HINGE SIDE PLATE SS 400W	A/R
01K	1001252553	LAMP, HEAT SINK 400W	A/R
01L	1001252554	LAMP, TRUNION BRACKET 400W	A/R
01M	1001252555	LAMP, HINGLE BOLT 400W	A/R
01N	1001252556	LAMP, HINGE WASHER 400W	A/R
01O	1001252557	LAMP, DRIVER MOUNT BKT 400W	A/R
01P	1001252558	LAMP, DRIVER 400W	A/R
01Q	1001252559	LAMP, M16 METAL CABLE GLAND	A/R
01R	1001252560	LAMP, M20 METAL CABLE GLAND	A/R
01S	1001253965	LAMP, CONNECTOR WP 400W	A/R
01T	1001253966	LAMP, 300 MM CABLE WITH PLUG	A/R
01U	1001253967	LAMP, 1500 MM CABLE WITH PLUG	A/R
02	1001247047	LAMP, PL6F-400W-DC48V 60 DEGREE	4
02A	1001252561	LAMP, LENS 60 DEGREE 400W	A/R

RECOMMENDED SPARE PARTS

ITEM DESCRIPTION	PART NO
SOLENOID, HYDRAULIC PUMP MOTOR	1730549
SEAL, 3/8UNC 750 SERIES WASHER THREAD (PRESSURE RELIEF VALVE ADJUSTMENT SCREW)	1001246647
COIL, SV08B VALVE 12 V	1001228480
VALVE, SV08B CARTRIDGE	1001228481
BELT, FAN (KUBOTA D905)	1730962
HOSE, RADIATOR UPPER (KUBOTA D905)	1730867
HOSE, RADIATOR LOWER (KUBOTA D905)	1730955
ELEMENT, AIR FILTER (KUBOTA D905)	1730963
ELEMENT, FUEL FILTER (KUBOTA D905)	1730873
ELEMENT, OIL FILTER (KUBOTA D905)	1730569
SWITCH, CIRCUIT BREAKER 20 A	4360161
FUSE, 25 A MINI-BLADE	8229245
ELECTRONICS ASSY, LED-MODULE Z93612	1001180322
REFLECTOR, LED LENS Z93602 35 DEGREE	1001180321
DUSTCAP, HIRSCH C16-1	1001170350
FUSE, ELECTRICAL 20 A	4360161
RELAY	1001171585
CONTROL, SINCRO 154520 AVR DBC1 CARD Item 36	1001177612
MOUNTING CLIP, CAPACITOR SINCRO 106345 Item 08	1001200946
CAPACITOR, SINCRO MOGJ51X79 Item 21	1001200947
FUSE, E20A/250VP-314 CARTRIDGE (TVS)	1001226223
RESISTOR, SINCRO 157379 Item 47 80 Ω /150 W	1001243170
FUSE, SINCRO AVR CARD 3/ 15 A Item 52	1001212058
SHAFT, SINCRO FB4/48 FLEX-DISC Item 24	1001265198

Table 1.0 D905/FB4 Genset

ITEM DESCRIPTION	PART NO
BELT,FAN (KUBOTA Z482E)	1001265321
HOSE, RADIATOR UPPER (KUBOTA Z482E)	1001265320
HOSE, RADIATOR LOWER (KUBOTA Z482E)	1001265317
CAP, RADIATOR KUBOTA Z482EG	1001258616
ELEMENT, AIR FILTER (KUBOTA Z482E)	1001212174
FUEL FILTER (KUBOTA Z482E)	1001181346
OIL FILTER (KUBOTA Z482E)	1001265352
CAPACITOR, MECC-ALTE PM5G 1800 9710303016	1001306076
RECTIFIER BRIDGE, 100A 3PH PM5G 1800	1001306398
FUSE HOLDER 12 GA INLINE FUSE, 30 A	7346000126 8229245
HOLDER, MAXI BLADE FUSE FUSE, 50 A MAXI BLADE	KTMBFH KTMBF50

Table 2.0 Z482E/PM5G Genset

ITEM DESCRIPTION	PART NO
SOLENOID, HYDRAULIC PUMP MOTOR	1730549
SEAL, 3/8UNC 750 SERIES WASHER THREAD (PRESSURE RELIEF VALVE ADJUSTMENT SCREW)	1001246647
COIL, SV08B VALVE 12 V	1001228480
VALVE, SV08B CARTRIDGE	1001228481

Table 3.0 Hydraulic Power Pack