



# Illustrated Parts Manual

## Lighting Tower Models LED-4/6 Series II

**1001309658**

Revision B

January 15, 2024

LED-4 II S/N LED4000001.....onward  
LED-6 II S/N 2300L00382.....onward



### REFERENCE LED-4/6 II MANUALS

- 1001309656      OPERATION & SAFETY
- 1001309657      SERVICE & MAINTENACE
- 1001309658      PARTS & RECOMMENDED SPARES

### CUSTOMER SUPPORT

**JLG Industries  
(Port Macquarie)**  
11 Bolwarra Road  
Port Macquarie  
NSW 2444  
Phone: (02) 6581 1111

**JLG Industries  
(Victoria)**  
Warehouse 2  
74-94 Centre Road  
Hallam  
Melbourne VIC 3803  
Phone: (03) 9554 4333

**JLG Industries  
(Queensland)**  
223 Fison Avenue West  
Eagle Farm  
Brisbane QLD 4009  
Phone: (07) 3309 9111

**JLG Industries  
(Western Australia)**  
39 Kewdale Road  
Kewdale  
Perth WA 6105  
Phone: (08) 9356 9811

**JLG Industries  
(New South Wales)**  
358 Park Road  
Regents Park  
Sydney NSW 2143  
Phone: (02) 8718 6300

**JLG Industries  
(South Australia)**  
9 Nucera Court  
Green Fields  
Adelaide SA 5107  
Phone: (08) 8259 8777

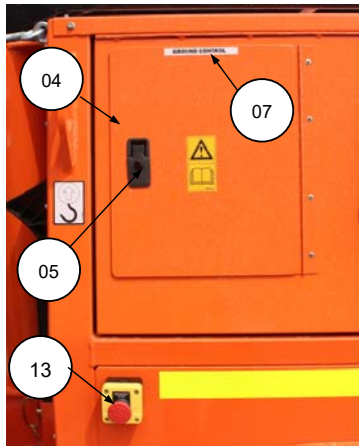
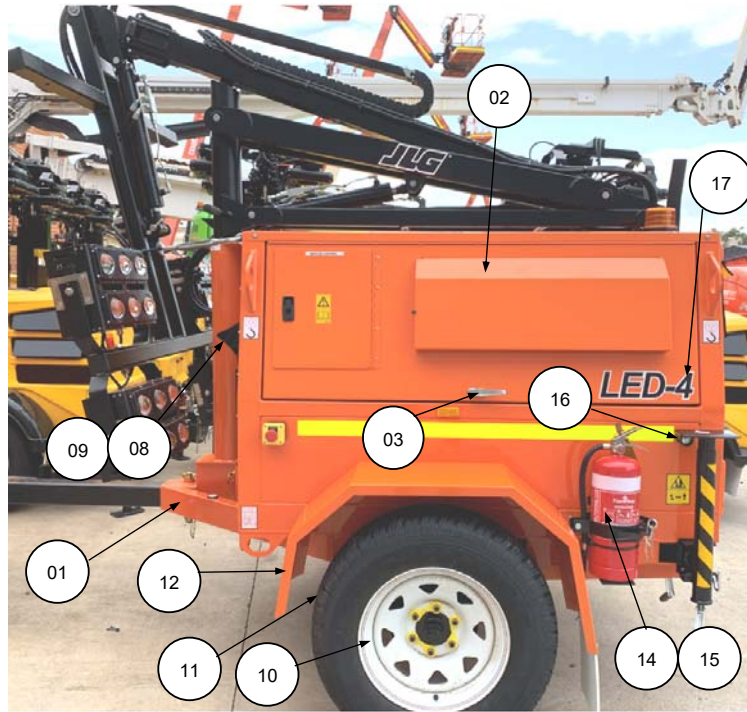
**JLG Industries  
(New Zealand)**  
2b Fisher Crescent  
Mt Wellington, Auckland  
New Zealand  
Phone: + 64 9276 1728

BLANK PAGE

## ILLUSTRATED PARTS MANUAL

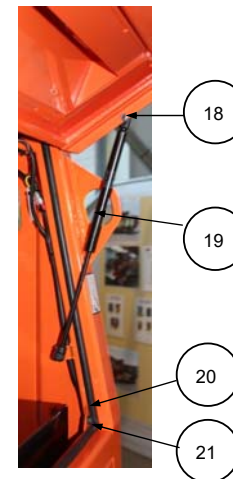
CONTENTS	PAGE
• MACHINE LEFT SIDE VIEW	5
• MACHINE RIGHT SIDE VIEW	7
• MACHINE REAR VIEW	9
• MACHINE FRONT VIEW	11
• FRONT PANEL	13
• TRAILER AXLE AND WHEEL HUBS	14
• RIGHT SIDE VIEW KUBOTA Z482 EG ENGINE	15
• LEFT SIDE VIEW KUBOTA Z482 EG ENGINE	17
• FUEL TANK & ACCESSORIES	19
• MAST ASSEMBLY	20
• MAST HYDRAULIC CYLINDERS	23
• MAST HYDRAULIC POWERPACK	25
• ELECTRICAL EQUIPMENT - MACHINE	26
• ELECTRICAL EQUIPMENT - LED LIGHTS	30
• RECOMMENDED SPARES	35

MACHINE LEFT SIDE VIEW

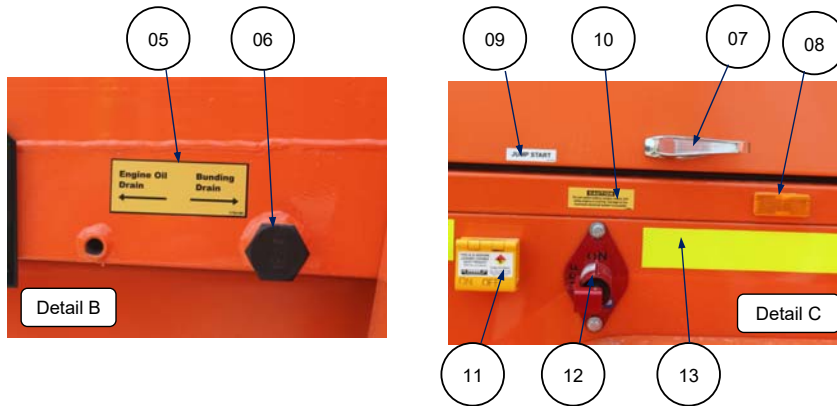
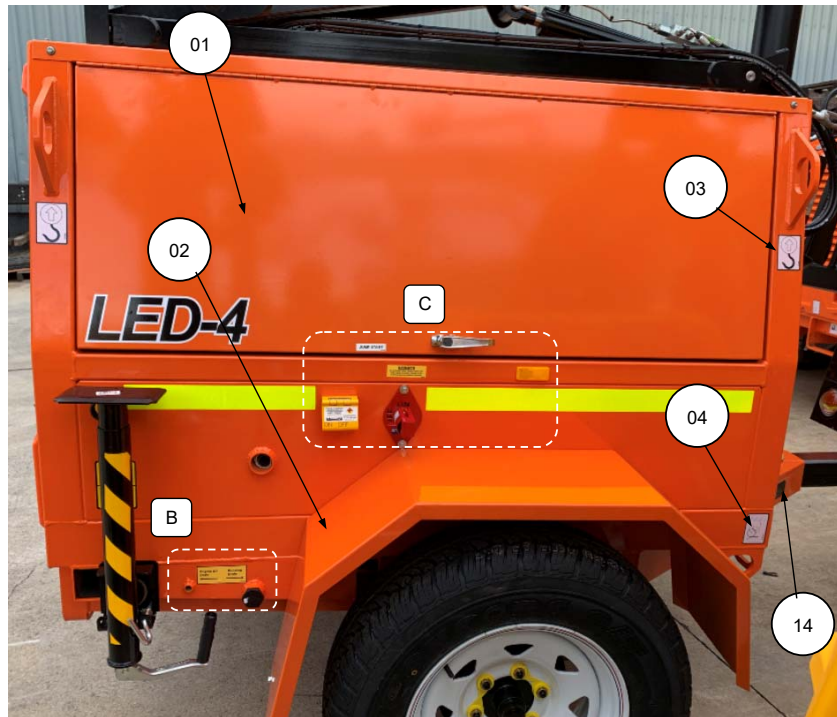


MACHINE LEFT SIDE VIEW – PARTS LIST

SEQ.#	ITEM NO.	DESCRIPTION	QTY
01	1001255688	FRAME, LED TRAILER FRAME	1
02	1001171028P	DOOR LH, PAINTED	1
03	1001178155	HANDLE, T-DOOR	1
03A	1730033	PADLOCK HANDLE & "S" BRACKET (OPTIONAL)	1
-	1730790	HANDLE, LOCKING TAB	A/R
04	1001171024P	PLATE, CONTROL BOX COVER	1
05	1735660	LATCH, LIFT AND TURN	1
	1001161057	+ LOCKING TAB	1
06	1001262654	DECAL, 'OPERATING INSTRUCTIONS'	1
07	1700037	DECAL, 'GROUND CONTROL'	1
08	1001211017	WHEEL, CHOCK PLASTIC BLACK	2
09	1001211018	BRACKET, WHEEL CHOCK MOUNTING	2
10	1001185696	WHEEL RIM	2
11	1730618	TYRE, 205/80 X 16"	2
-	1001257569	WHEEL, TYRE ASSY 16 INCH	2
12	1734233	SHIELD, MUDGUARD, LH	1
13	1001204848	EMERGENCY STOP SWITCH	1
14	1734123	MOUNT BRACKET, 4.5 kg FIRE EXTINGUISHER	1
15	1733395	FIRE EXTINGUISHER, 4.5 kg	1
16	1730750	STOP BLOCK, JACK STORAGE	2
17	1001256405	DECAL, 'LED-4'	2
	1001173775	DECAL, 'LED-6' (NOT SHOWN)	2
18	1001185541	MOUNT, GAS STRUT BALL	4
19	1001185540	STRUT, DOOR GAS	2
20	1734188	SEAL, DOOR RUBBER	5
21	0940036	BUMPER, DOOR RUBBER	4



MACHINE RIGHT SIDE VIEW



MACHINE RIGHT SIDE VIEW – PARTS LIST

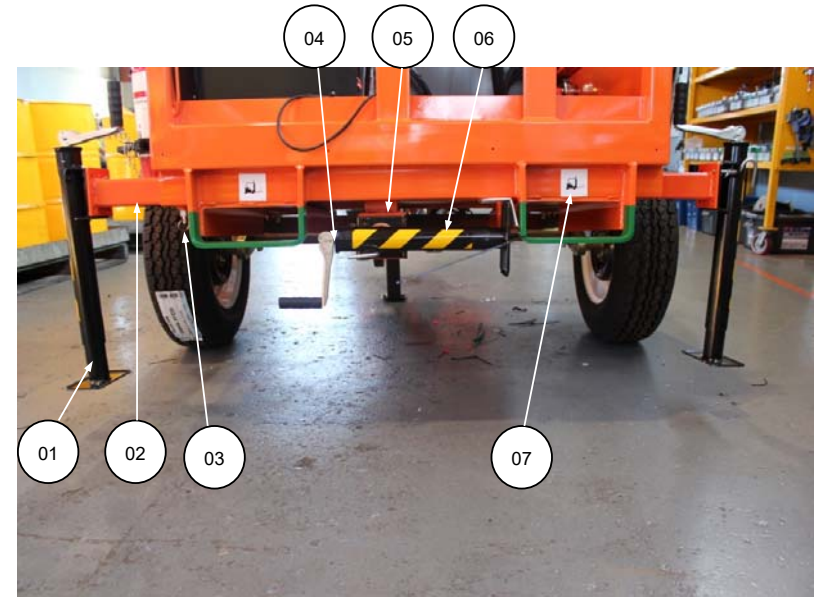
SEQ.#	ITEM NO.	DESCRIPTION	QTY
01	1001259026	DOOR, ASSEMBLY RH	1
02	1734232	SHIELD, MUDGUARD RH	1
03	1701500	DECAL, 'LIFT' POINT	4
04	1702300	DECAL, 'TIE-DOWN' POINT	2
05	1734185	DECAL, 'ENGINE OIL AND BUNDING DRAIN'	1
06	1001204664	PLUG, 1" BSPT PLASTIC	1
07	1001178155	HANDLE, T-DOOR	1
07A	1730033	PADLOCK HANDLE & "S" BRACKET (OPTIONAL)	1
-	1730790	HANDLE, LOCK TAB	A/R
08	1737063	REFLECTOR AMBER	2
09	1001162608	DECAL, 'JUMP START'	1
10	1730913	DECAL, 'CAUTION BATTERY ISOLATOR'	1
11	1733733	STARTER ISOLATOR, COLE HERSEE	1
12	1730847	SWITCH, DOUBLE POLE BATTERY ISOLATOR	1
13	1731337	TAPE, PRISMATIC REFLECTIVE 50 mm	A/R
14	1737103	DECAL, 'VIN PLATE IDENTIFICATION'	1

MACHINE REAR VIEW



SEQ.#	ITEM NO.	DESCRIPTION	QTY
01	1001181720	PANEL, LED SERIES LT ROOF FINISHED	1
02	1731328	PANEL, REAR FINISHED	1
03	1730534	CRADLE, MAST SUPPORT	1
04	1732597	WEAR PAD, MAIN BOOM (MAST REST)	1
05	1001174354	LAMP, LICENCE PLATE	1
06	1734145	TAIL LAMP ASSEMBLY LED	2
07	1001172068	BEACON, LED LIGHTING TOWER	1
08	1737513	TAPE, RETRO-REFLECTIVE YELLOW	1

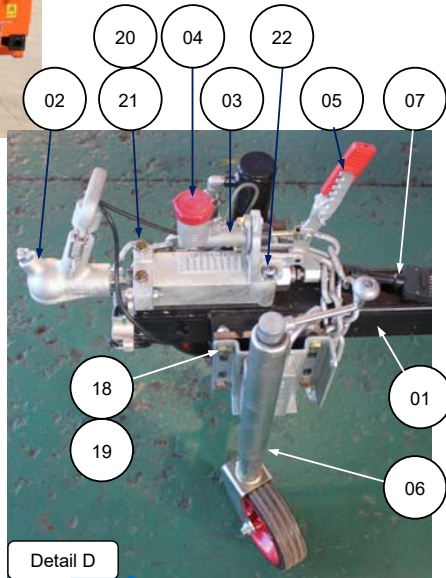
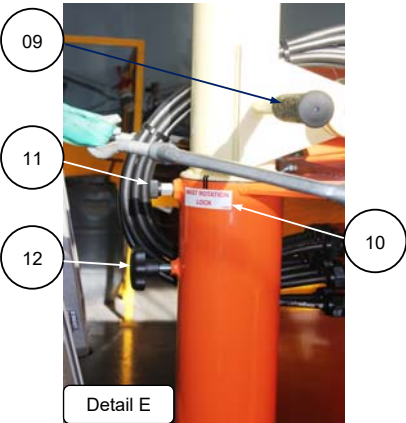
MACHINE LOWER REAR VIEW



SEQ.#	ITEM NO.	DESCRIPTION	QTY
01	A330010	OUTRIGGER, SIDE JACK ASSEMBLY	2
02	1734353	OUTRIGGER, SIDE EXTENSION ARM	2
03	3422744	PIN, SPRING LOADED PLUNGER	2
04	A330008	OUTRIGGER, REAR JACK ASSEMBLY	1
-	1001265715	KIT, SWIVEL PIN 3/8" DL JACK	A/R
05	1733737	OUTRIGGER, REAR EXTENSION ARM	1
06	1737103	TAPE, REFLECTIVE BLACK/YELLOW	3
07	1703073	DECAL, 'FORK LIFT POINT'	2

LED-4/6 Series II

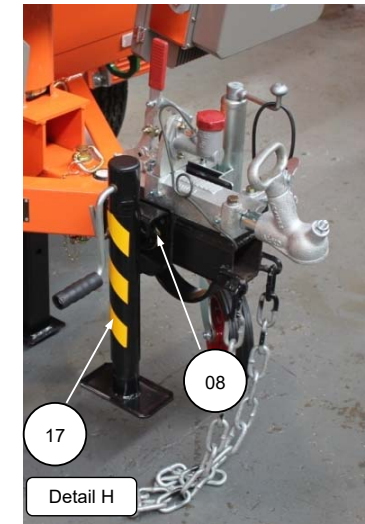
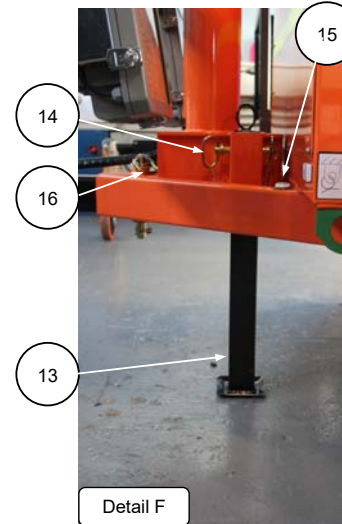
MACHINE FRONT



SEQ.#	ITEM NO.	DESCRIPTION	QTY
01	1730901	WELDMENT, FRONT DRAWBAR EXTENSION	1
02	1735456	COUPLING, OVERRIDE TOWBALL	1
20	0681828	1/2" UNC X 3.5" HEX HEAD BOLTS SAE GRADE 8	2
21	4891800	1/2" HARDENED FLAT WASHER	2
22	3931856	1/2" UNC X 3.5" SOCKET HEAD CAP SCREW ASTM 574	2
03	1737060	CYLINDER, HYDRAULIC BRAKE	1
04	1734707	CAP, HYDRAULIC BRAKE RESERVOIR	1
05	1730578	HANDLE, PARKING BRAKE	1

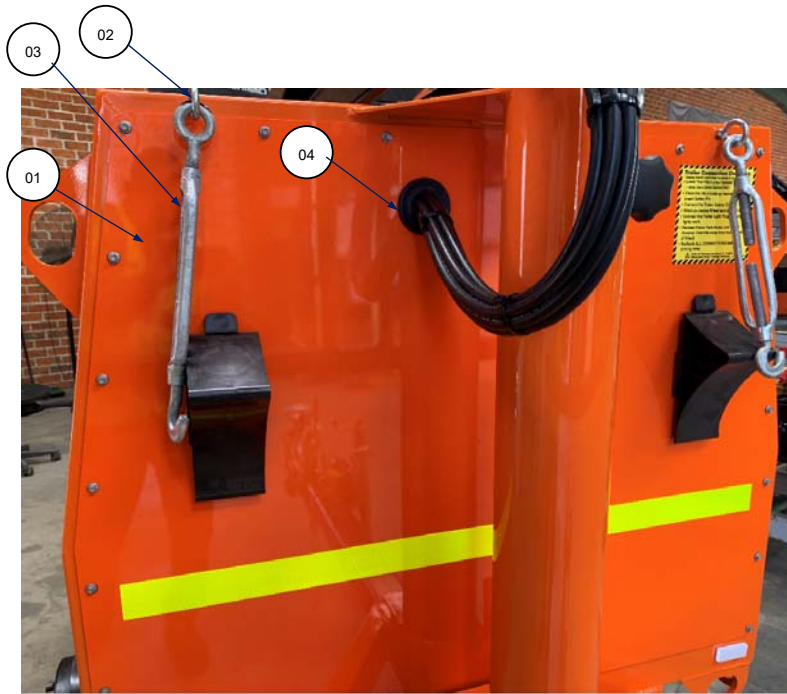
LED-4/6 Series II

MACHINE FRONT



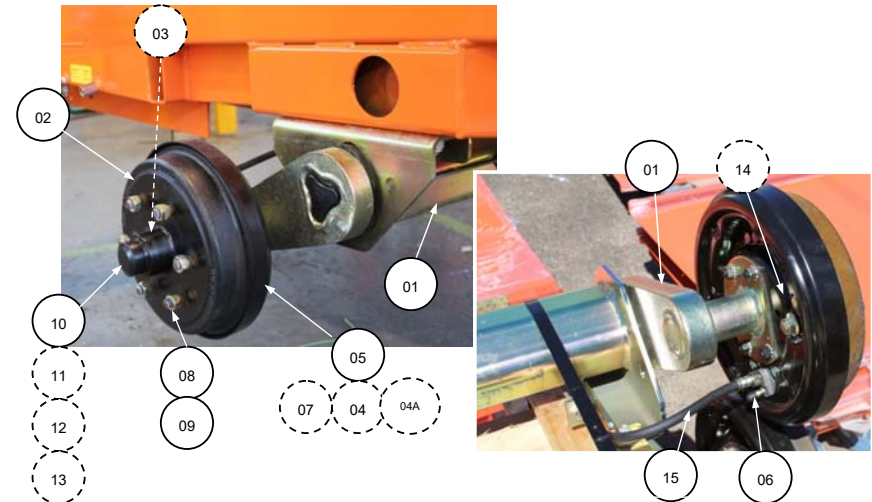
SEQ.#	ITEM NO.	DESCRIPTION	QTY
06	1737991	WHEEL, JOCKEY	1
07	1001172071	CABLE, 5C21B TRAILER	1
08	A330014	CIRCLIP, OUTRIGGER	4
09	1730797	GRIP, MAST ROTATE HANDLE	1
10	1730747	DECAL, MAST ROTATION LOCK	1
11	3422744	PIN, MAST INDEXING PLUNGER	1
12	1734165	KNOB, MAST ROTATE LOCKING	1
13	1730580	LEG, TRANSPORT	1
14	1733192	PIN, HITCH TRANSPORT LEG	1
14	1733193	CHAIN, HITCH PIN RETAINING	1
15	1733106	BUBBLE, LEVELLING	1
16	1733267	PIN, DRAWBAR ASSEMBLY	1
17	A650235	JACK, FRONT OUTRIGGER (DRAWBAR)	1
18	0681812	BOLT, HEX SCREW 1/2" UNC-1.5" SAE GRADE 8	4
19	3271805	NUT, HEX NYLOC 1/2"UNC GRADE 6	4

FRONT PANEL



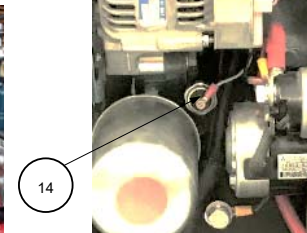
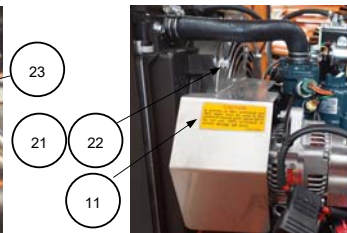
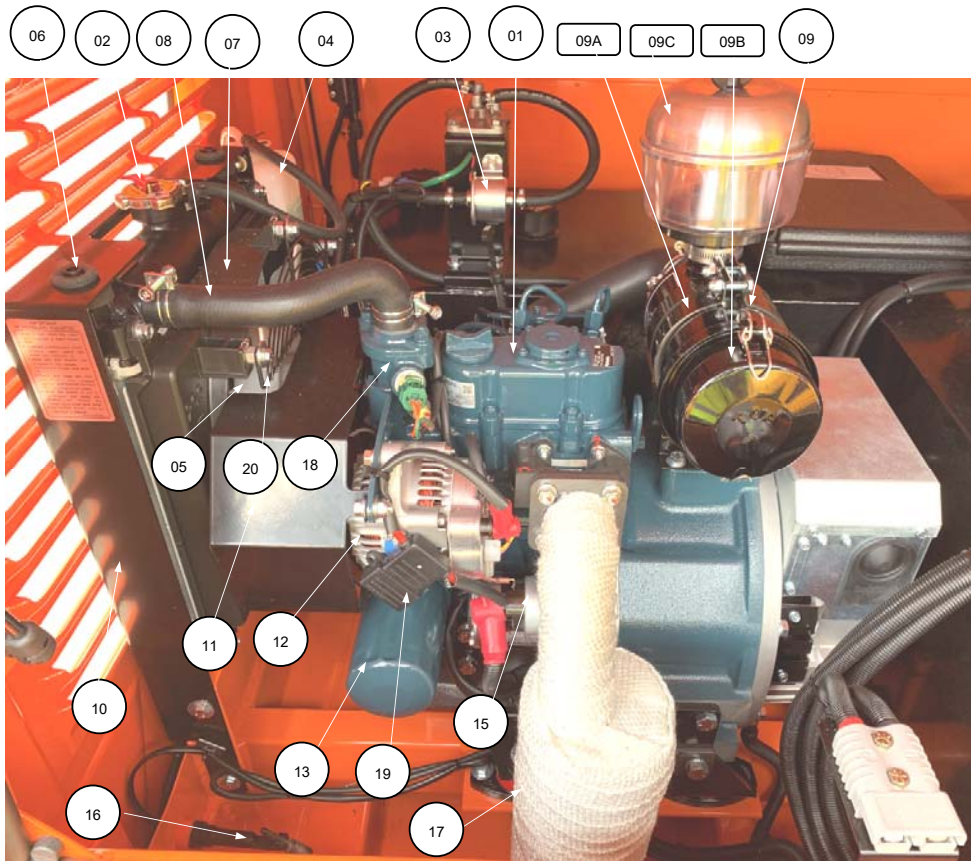
SEQ.#	ITEM NO.	DESCRIPTION	QTY
01	1001258395	PANEL, FINISHED FRONT	1
02	1730759	EYEBOLT, M10 x 100 mm Zn PLATED	2
03	1001171971	TURNBUCKLE, GALVANISED 16 mm LED LT	2
04	1001179445	GROMMET, RUBBER BLACK LED LT	1

TRAILER AXLE AND WHEEL HUBS



SEQ.#	ITEM NO.	DESCRIPTION	QTY
01	1730891	AXLE ASSEMBLY C/W BRAKES (1650 kg RATING)	1
02	1730825	HUB, BRAKE DRUM	2
03	1730915	KIT, WHEEL BEARING AND SEAL	2
04	1730577	KIT, BRAKE SHOE	2
04A	1001303139	AXLE, BRAKE SHOE HOLD DOWN KIT	2
05	1734486	PLATE, PAIR BACKING	2
06	1730884	NIPPLE, BRAKE LINE BLEED	2
07	1730882	CYLINDER, WHEEL BRAKE DRUM	2
08	1730885	STUD, WHEEL	12
09	1730886	NUT, WHEEL	12
10	1730887	CAP, DUST	2
11	1730888	NUT, AXLE 3/4"UNF	2
12	1730889	WASHER, FLAT 3/4"	2
13	1730890	PIN, SPLIT 3.2 x 32	2
14	1730920	SEAL, WHEEL BEARING SEAL	2
15	1730766	KIT, BRAKE LINE (FOR AXLE ASSEMBLY 1730891) INCLUDES FOLLOWING ITEMS	1
	1733808	TUBE, DRAW BAR	(1)
	1733809	TUBE, SHORT LEFT	(1)
	1733810	TUBE, SHORT RIGHT	(1)
	1733811	FITTING, TEE	(1)
	1733812	HOSE, DRAWBAR BRAKELINE	(1)
	1733813	HOSE, AXLE BRAKELINE	(2)
	1733814	CLIP -RETAINING	(3)

RIGHT SIDE VIEW - KUBOTA Z482 EG ENGINE

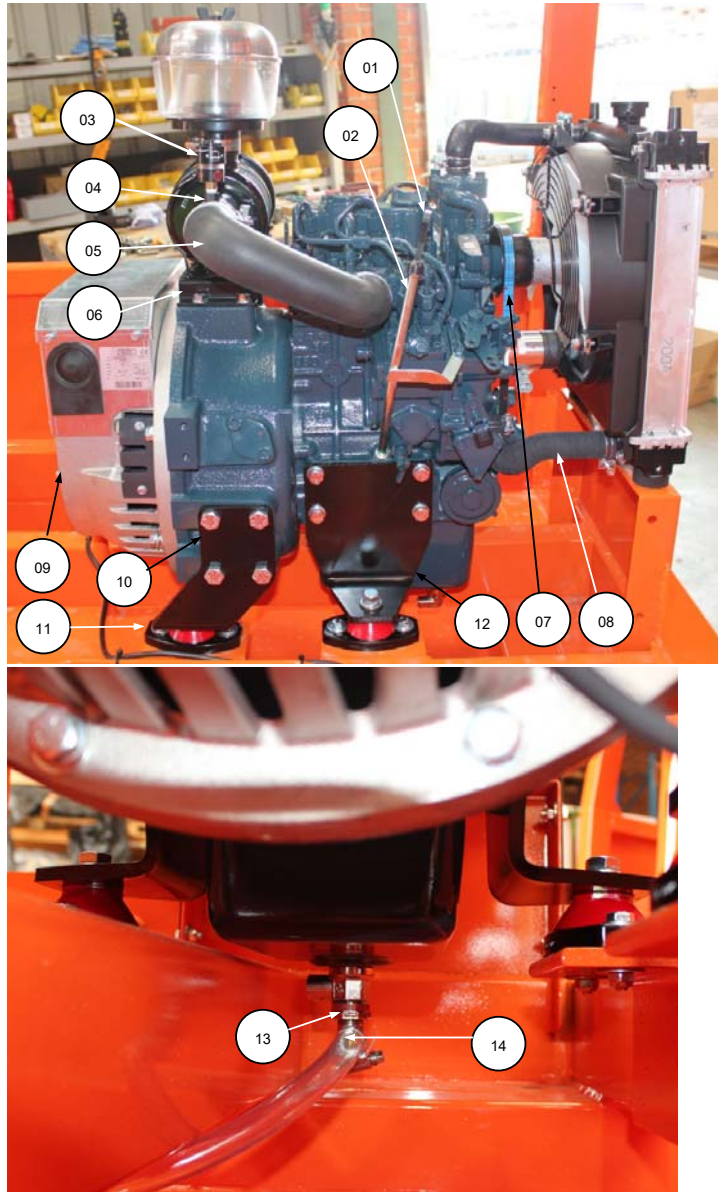


RIGHT SIDE VIEW – PARTS LIST KUBOTA D905 ENGINE

SEQ.#	ITEM NO.	DESCRIPTION	QTY
01	1001256289	ENGINE, KUBOTA Z482 ELE-GOV 1500 RPM (LED-4)	1
	1001258445	ENGINE, KUBOTA Z482 ELE-GOV 1800 RPM (LED-6)	1
02	1001258616	CAP, RADIATOR KUBOTA Z482 EG	1
03	1001265403	ELCTRIC FUEL PUMP	1
04	1001212181	CONTAINER, Z482 COOLANT BOTTLE	1
05	1001265356	FAN, RADIATOR Z482 EG ENGINE	1
06	1001265318	MOUNT, RUBBER BUSH RADIATOR	4
07	1001265319	RADIATOR, Z482 ELE-GOV ENGINE	1
08	1001265320	HOSE, RADIATOR INLET (TOP)	1
09	1001212174	FILTER, AIR KUBOTA Z482	1
09A	1001229321	BRACKET, Z482 AIR CLEANER	2
09B	7023174	ASSY, AIR CLEANER/METAL HOUSING	1
09C	1001118022	FILTER, PRE-CLEANER- BOWL (DONALDSON)	1
10	1001255887	BRACKET, RADIATOR HOLD Z482	1
11	1001262496	BRACKET, FAN-BELT GUARD Z482EG (PRIOR TO S/N:2300L00416)	1
	1001272031	COVER, FAN-BELT KU Z482 ENGINE (FROM S/N:2300L00416)	1
12	1001265351	ENGINE, ALTERNATOR Z482 EG	1
13	1001265352	FILTER, OIL Z482 EG ENGINE	1
	1001265353	WASHER, PLAIN OIL FILTER SWAP	1
14	70000297	OIL PRESSURE SENDER	1
15	1001265354	ASSY STARTER	1
16	4360436	SWITCH, BUNDING LEVEL	1
	1001255929	MUFFLER, STANDARD LED4/6 (SUPERSEDED)	
17	1001300129	MUFFLER, Z482 LED-4/6 II	1
18	70004853	ASSY, WATER PUMP	1
19	7346000126	FUSE HOLDER 12 GA INLINE 30 AMP	1
	8229245	FUSE, 30 AMP	1
20	1001269228	SHIELD, ENGINE FAN Z482 EG KU (PRIOR TO S/N:2300L00416)	1
21	0760614	BOLT, HEX HEAD M6 X 1 – 30 mm LONG	A/R
22	3290801	NUT HEX M8 (FOR PACKER BEHIND FAN GUARD)	A/R
23	1001287689	GROMMET,5/16 ID X 17/32 OD (From S/N: 2300I00630)	4



LEFT SIDE VIEW- KUBOTA Z482 EG ENGINE



SEQ.#	ITEM NO.	DESCRIPTION	QTY
01	1001258717	SUPPORT, DIPSTICK GUIDE KUBOTA	1
02	1001258718	GAUGE, DIPSTICK ENGINE KUBOTA	1
03	1001259142	INDICATOR, RESTRICTION X002250	1
04	1001259420	MOUNT, AIR RESTRICT INDICATOR	1
05	1001206201	HOSE, KUBOTA Z482 AIR CLEANER	1
06	1001206704	BRACKET, Z482 AIR CLEANER MOUNT	1
07	1001265321	FAN, BELT KUBOTA Z482 EG ENGINE	1
08	1001265317	HOSE, RADIATOR OUTLET (BOTTOM)	1
09	1001254219	GENERATOR, PMG, 48V 1500 RPM (LED-4)	1
	1001306433	RECTIFIER BRIDGE, 90A 3PH FOR 1500 RPM PMG	-
	1001258444	GENERATOR, PMG, 48V 1800 RPM (LED-6-SUPERSEDED BY 1001272032)	1
	1001272032	GENERATOR, PMG, 57V 1800 RPM (LED-6)	1
	1001306076	CAPACITOR, PMG FOR 1500/1800 RPM	-
	1001306398	RECTIFIER BRIDGE, 100A 3PH FOR 1800 RPM PMG	-
10	1001255862	BRACKET, Z482EG ENGINE RIGHT	1
	1001255861	BRACKET, Z482EG ENGINE LEFT (NOT SHOWN)	1
	1001205894	ENGINE MOUNT, GPM7FS-12B ISOLATOR	4
12	1001205306	BRACKET, KUBOTA Z482 ENGINE LEG	2
13	1001205052	VALVE, E27BL M22X1.5P L-NIPPLE	1
14	1001207320	HOSE, CLEAR VINYL 5/8" DIA.	0.9 m

Z482 ENGINE HARNESS CONNECTORS (NOT SHOWN)

ENGINE SPEED SENSOR (1001297172)

SEQ.#	ITEM NO.	DESCRIPTION	QTY
01	1001259285	CONNECTOR, FEMALE 3WAY SPEED SENSOR	1
02	1001259291	TERMINAL, FEMALE TE1188 SPEED SENSOR	3
03	1001259312	SEAL GREEN CA1082	3

COOLANT TEMP SENSOR

SEQ.#	ITEM NO.	DESCRIPTION	QTY
01	1001259274	CONNECTOR, FEMALE 2WAY TEMP SENSOR	1
02	1001259287	TERMINAL, FEMALE TE1176 TEMP SENSOR	2
03	1001259313	SEAL BROWN CA1086	2

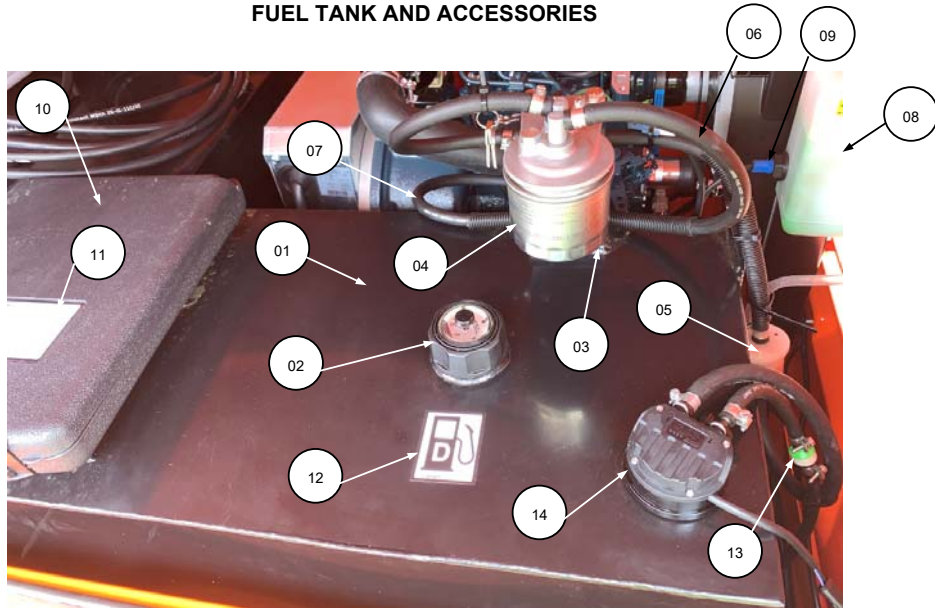
ACTUATOR SOLENOID (KU1E41160013)

SEQ.#	ITEM NO.	DESCRIPTION	QTY
01	1001259275	CONNECTOR, FEMALE 2WAY ACTUATOR	1
02	1001259290	TERMINAL, FEMALE TE1121 SOLENOID	2
03	1001259314	SEAL BLACK CA1085	2

ECU

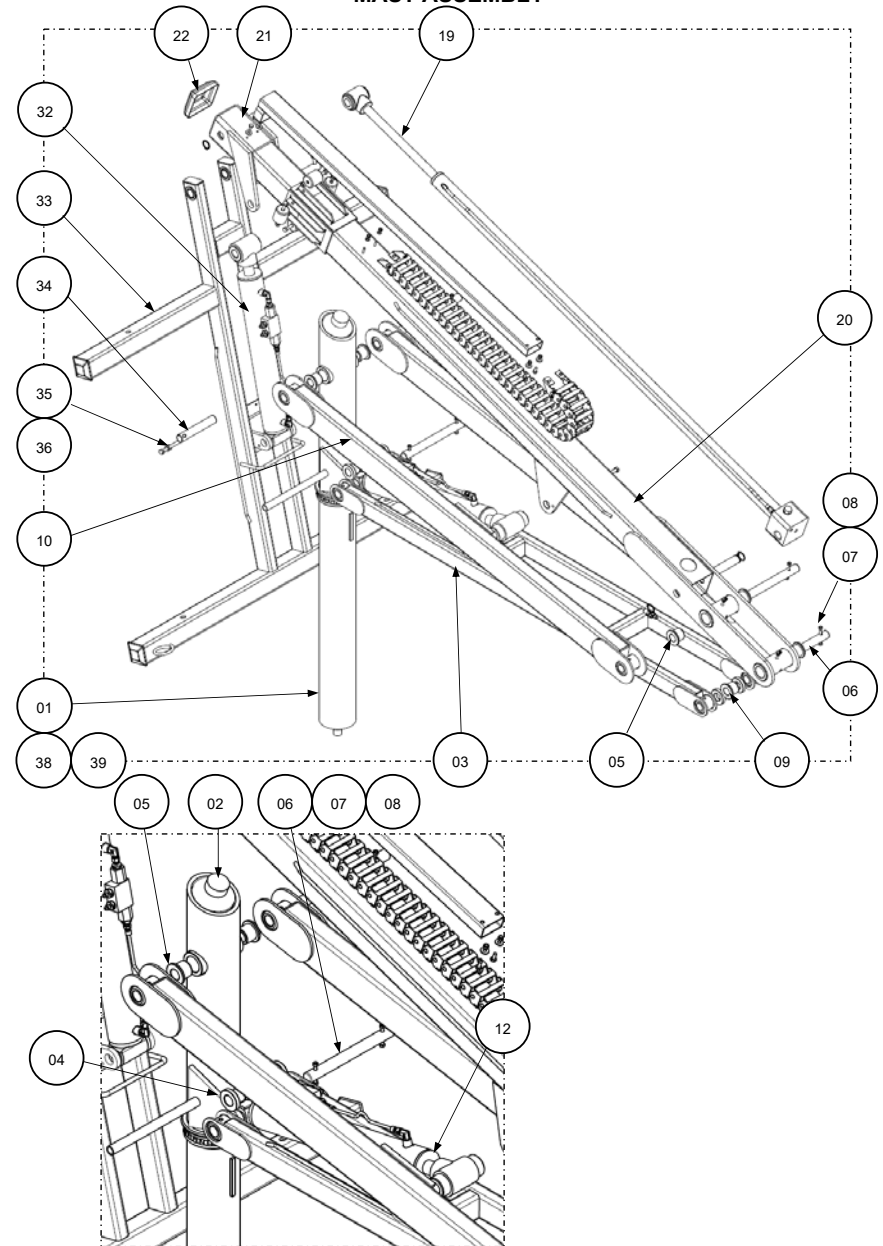
SEQ.#	ITEM NO.	DESCRIPTION	QTY
01	1001259273	CONNECTOR, FEMALE 44WAY ECU	1
02	1001259286	TERMINAL, FEMALE TE1831 ECU	21
03	1001259315	BLANKING PIN BLACK CA1192	23

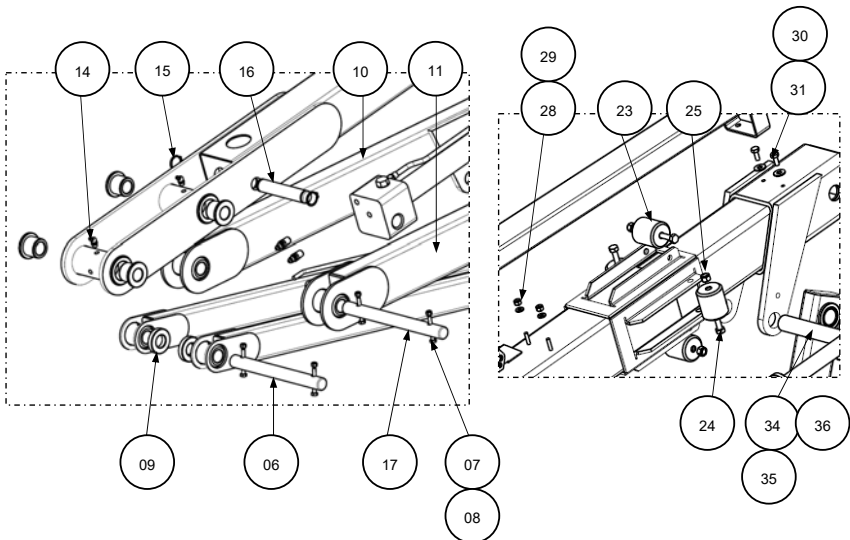
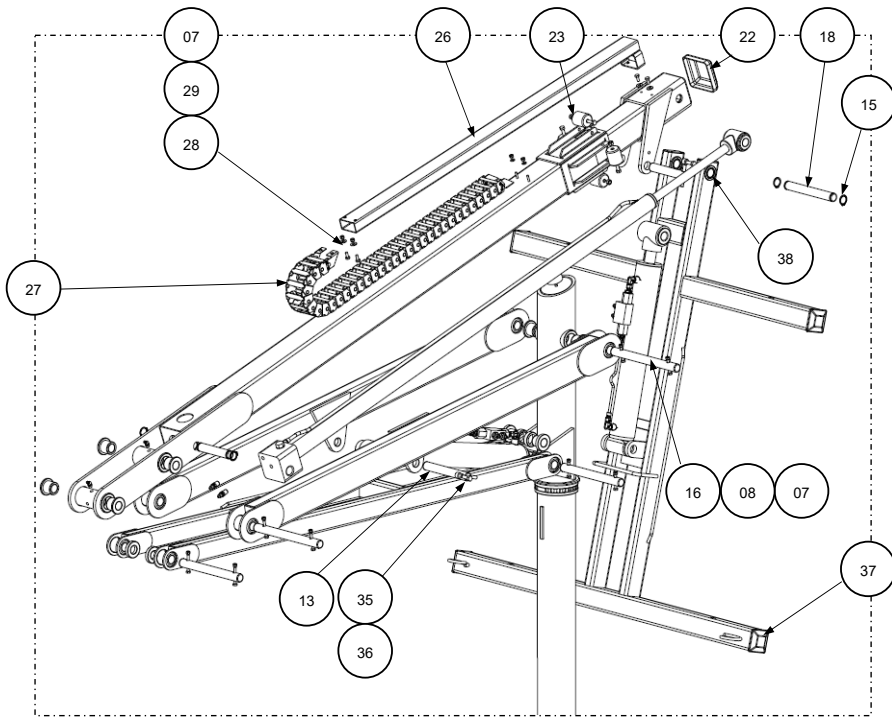
FUEL TANK AND ACCESSORIES



SEQ.#	ITEM NO.	DESCRIPTION	QTY
01	1001255949	TANK, LED TOWER FUEL	1
02	1001176826	CAP & GAUGE, LED LT FUEL TANK	1
03	1001171776	BRACKET, FUEL FILTER	1
04	1001181346	FILTER, ENGINE FUEL FILTER	1
05	7017992	FILTER FUEL IN LINE	1
06	1735652	HOSE, FUEL DELIVERY-LINE 5/16"	1.6M
07	1735652	HOSE, FUEL RETURN-LINE 3/16"	1.6M
08	1001212181	CONTAINER, Z482 COOLANT BOTTLE	1
09	1730918	SENSOR, WATER LEVEL	1
10	0860520	BOX, MANUAL STORAGE	1
11	1701509	DECAL, PICTOGRAM-"STORAGE BOX"	1
12	1701505	DECAL, "DIESEL FUEL"	1
13	1001265717	VALVE, FUEL ONE WAY Z482EG KU	1
14	1001256406	SENSOR, SAG378 FUEL	1

MAST ASSEMBLY



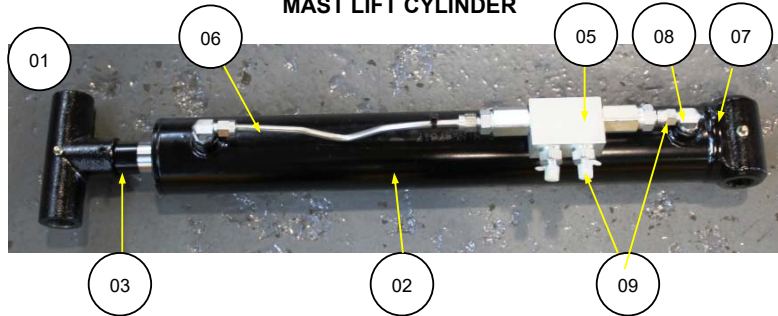


MAST ASSEMBLY – PARTS LIST

SEQ.#	ITEM NO.	DESCRIPTION	QTY
01	1730661	LOWER MAST – INNER (WELDMENT)	1
02	1730778	BUMPER, MAST SUPPORT	1
03	1730515	WELDMENT, OUTER LINK ARMS	1
04	1730513	FLANGED BUSH, ROUND MAST	2
05	1730511	FLANGED BUSH	6
06	1001173772	PIN, OUTER LINK ARM PIVOT	2
07	1734309	HEX NUT, NYLOC 1/4" UNC	10
08	0641416	HEX BOLT, 1/4"-20 UNC 2.0" LONG	6
09	1734299	SPACER, COLLAR	2
10	1730514	ARM, INNER LH LINK	1
11	1734352	ARM, INNER RH LINK	1
12	1733233	HYDRAULIC CYLINDER, MAST LIFT	1
13	1001173774	PIN, MAST LIFT-CYLINDER PIVOT	1
14	1731087	GREASE NIPPLE, 45° ANGLE 1/8" NPT	2
15	7011716	CIRCLIP, EXTERNAL 1.0"	1
16	1001173863	PIN, TELE-CYLINDER LOWER PIVOT	2
17	1001173773	PIN, INNER LINK ARM PIVOT	2
18	1001173862	PIN, LIGHT DROOP PIVOT	1
19	1733235	HYDRAULIC CYLINDER, TELE-MAST	1
20	1730517	TELE-MAST, OUTER SQUARE	1
21	1730516	TELE-MAST, INNER SQUARE	1
22	1730814	CAP, INNER SQUARE MAST GALVANISED	1
23	1730710	ROLLER, MAST CARRIER	4
24	0641522	BOLT, HEX HEAD 5/16"-18UNC – 2.75" LONG	4
25	1734471	NYLOC NUT, HEX HEAD 5/16" SAE GRADE 5	4
26	1730589	TUBE, CABLE CARRIER	1
27	1734586	ASSEMBLY, ENERGY CHAIN	1
28	4811700	WASHER, M6 FLAT WASHER	2
29	3290605	NYLOC NUT, HEX M6 x 1.0P	2
30	4751400	FLAT WASHER, 1/4" STEEL	4
31	0641405	SCREW, HEX HEAD 1/4"-20 UNC – 5/8" LONG	4
32	1733234	HYDRAULIC CYLINDER, DROOP TILT	1
33	1001170585P	LIGHT DROOP	1
34	1001173864	PIN, TILT CYLINDER PIVOT	2
35	3841143	PIN, 3/8" KEEPER	3
36	0641608	SCREW, HEX HEAD 3/8"-16 UNC – 1.0" LONG	3
37	1001176386	CAP, LIGHT BAR END	4
	1001169783	DECAL, 'LED' (NOT SHOWN)	2
	1702009	DECAL, 'JLG' (NOT SHOWN) 3.5" HIGH	3
38	1731306	BUSH, LIGHT DROP MKII	2
39	4740418	WASHER THRUST – MAST BASE (NOT SHOWN)	2
40	3312605	HEX NUT NYLOC 1.0" UNC GRADE 8 (NOT SHOWN)	1

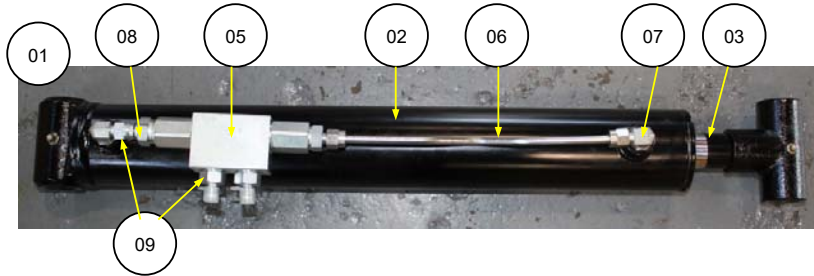
HYDRAULIC CYLINDERS

MAST LIFT CYLINDER



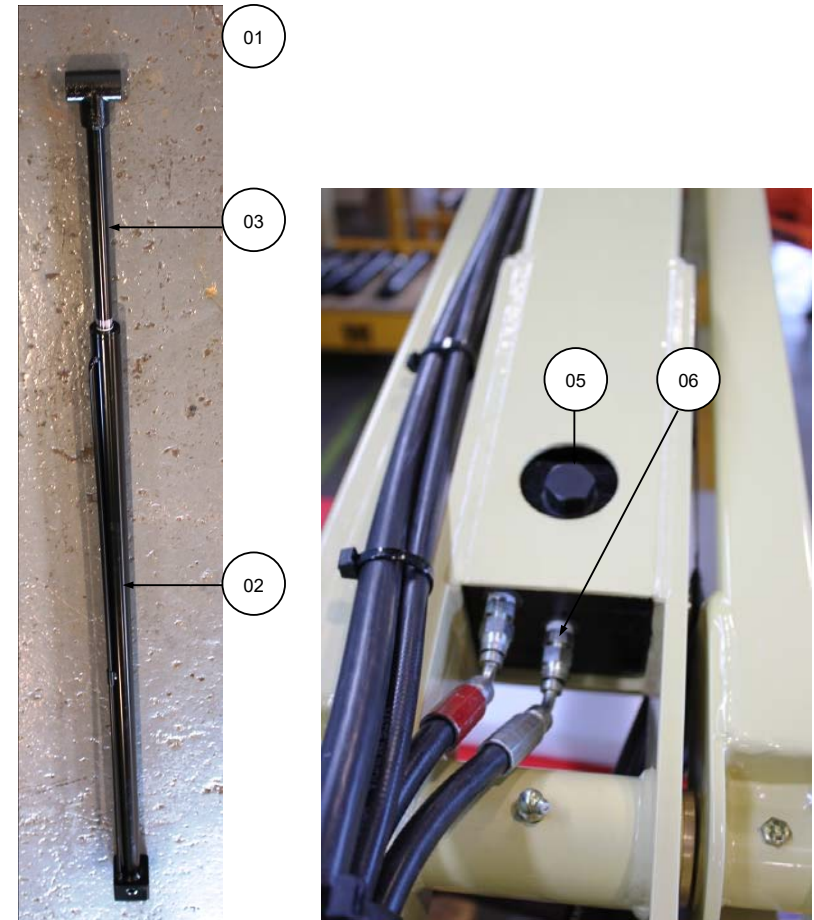
SEQ.#	ITEM NO.	DESCRIPTION	QTY
01	1733233	HYDRAULIC CYLINDER, MAST LIFT (COMPLETE)	1
02	1734220	BARREL, LIFT CYLINDER	1
03	1734221	ROD, LIFT CYLINDER PISTON	1
04	1731355	SEAL KIT, TILT/LIFT CYLINDER (NOT SHOWN)	1
05	1730634	VALVE, DOUBLE PILOT CHECK	1
06	1734156	TUBING, LIFT CYLINDER HYDRAULIC	1
07	1733343	ELBOW, M/M 1/4" x 7/16"	2
08	1733344	ADAPTOR, STRAIGHT UNION M/F 1/4" x 7/16"	1
09	1734248	NIPPLE, M/M ENCAPSULATED SEAL 1/4" x 7/16"	3

LIGHT DROOP TILT CYLINDER



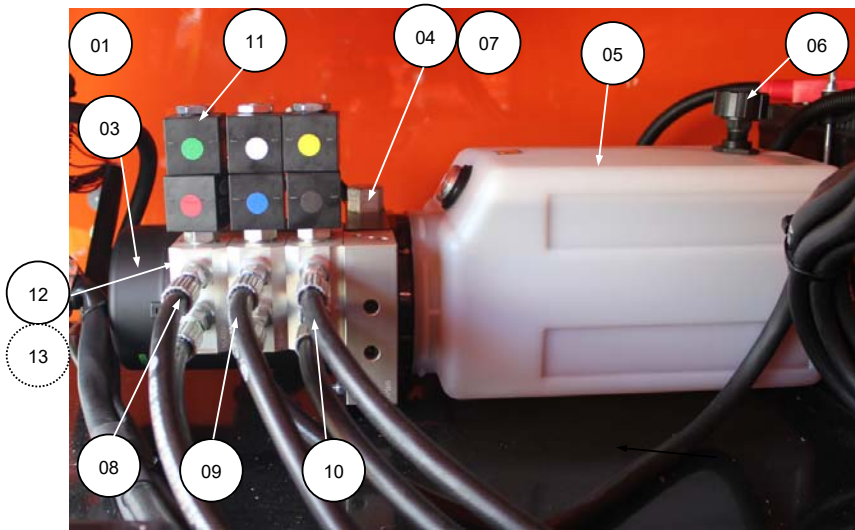
SEQ.#	ITEM NO.	DESCRIPTION	QTY
01	1733234	HYDRAULIC CYLINDER, DROOP TILT (COMPLETE)	1
02	1734222	BARREL, TILT CYLINDER	1
03	1734223	ROD, TILT CYLINDER PISTON	1
04	1731355	SEAL KIT, TILT/LIFT CYLINDER (NOT SHOWN)	1
05	1730634	VALVE, DOUBLE PILOT CHECK	1
06	1734155	TUBING, LIFT CYLINDER HYRAULIC	1
07	1733343	ELBOW, M/M 1/4" x 7/16"	2
08	1733344	ADAPTOR, STRAIGHT UNION M/F 1/4" x 7/16"	1
09	1734248	NIPPLE, M/M ENCAPSULATED SEAL 1/4" x 7/16"	3

TELE-MAST HYDRAULIC CYLINDER



SEQ.#	ITEM NO.	DESCRIPTION	QTY
01	1733235	HYDRAULIC CYLINDER, MAST TELE (COMPLETE)	1
02	1734224	BARREL, TELE CYLINDER	1
03	1734225	ROD, TELE CYLINDER PISTON	1
04	1731356	SEAL KIT, TILT/LIFT CYLINDER (NOT SHOWN)	1
05	4640438	VALVE, CHECK CARTRIDGE	1
06	1733345	NIPPLE, M/M ENCAPSULATED SEAL 1/4" x 7/16"	3

MAST HYDRAULIC POWERPACK



SEQ.#	ITEM NO.	DESCRIPTION	QTY
01	1001170775	HYDRAULIC POWERPACK ASSEMBLY (3-DCV)	1
	1001183247	HARNESS, HYDRAULIC POWERPACK LED	1
02	1730549	SOLENOID, MOTOR RUN 12 V	1
03	1001177367	MOTOR, 12 V DC ELECTRIC	1
04	1001177366	VALVE, PRESSURE RELIEF CARTRIDGE	1
05	1001177372	TANK, KMD1-S1-P12 HYDRAULIC OIL	1
06	1001177434	FILLER, BREATHER CAP	1
07		COVER, PRESSURE RELIEF VALVE	1
08	1733346	HOSE ASSY, MAST LIFT CYLINDER (GREEN/BLACK)	2
09	1733348	HOSE ASSY, TELE-MAST CYLINDER (RED/SILVER)	2
10	1733347	HOSE ASSY, DROOP TILT CYLINDER (BLUE/WHITE)	2
11	1001228480	COIL, SV08B VALVE 12 V	A/R
12	1001228482	VALVE, SV08B BODY (SLICE)	A/R
13	1001228481	VALVE, SV08B CARTRIDGE (NOT SHOWN)	A/R

ELECTRICAL EQUIPMENT - CONTROL BOX



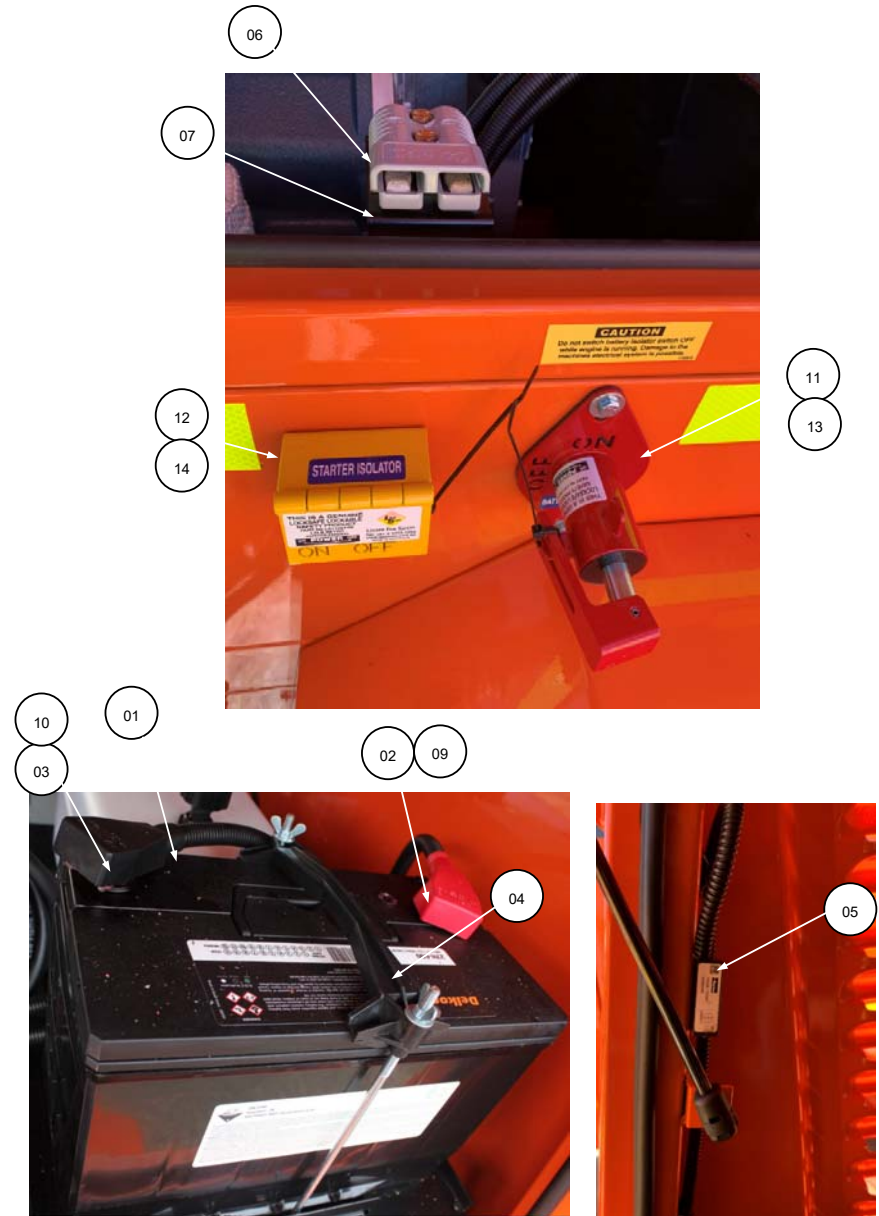
SEQ.#	ITEM NO.	DESCRIPTION	QTY
01	1001172070	MOUNT, CONTROL BOX	2
02	1001256408	CONTROL BOX, LED LT (LED-4)	1
	1001265696	CONTROL BOX, LED LT (LED-6)	1
	1001255863	BASE	-
	1001255864	COVER	-
	1001174358	ELEC ASSY, BUSBAR DUAL 150	-
03	1001172006	LIGHT, LED LT INTERIOR	1
04	4460613	TERMINAL, 21 PIN SOCKET	1
05	4460614	TERMINAL, 21 PIN PLUG	1
06	1001159780	DECAL, 'HYDRAULIC OIL'	1
07	1001171972	DECAL, HYDRAULIC PRESSURE 19.25 MPa	1

ELECTRICAL EQUIPMENT – MACHINE CONTROL PANEL(S)



SEQ.#	ITEM NO.	DESCRIPTION	QTY
01	1001171137	CONTROL, LED LIGHTING TOWER/ENGINE	1
02	1001170667	DECAL, LED TOWER CONTROL BOX	1
03	4360387	SWITCH, PUSH BUTTON (YELLOW)	1
04	4360336	SWITCH, TOGGLE 2-POSITION	1
05	4360328	SWITCH, TOGGLE 3-POSITION CENTRE-OFF	3
06	4360070	FUSE, ELECTIRCAL 15 A	5
07	1001265718	CONTROL, ECU 1500 RPM Z482EG (LED-4)	1
08	1001265719	CONTROL, ECU 1800 RPM Z482EG (LED-6)	1

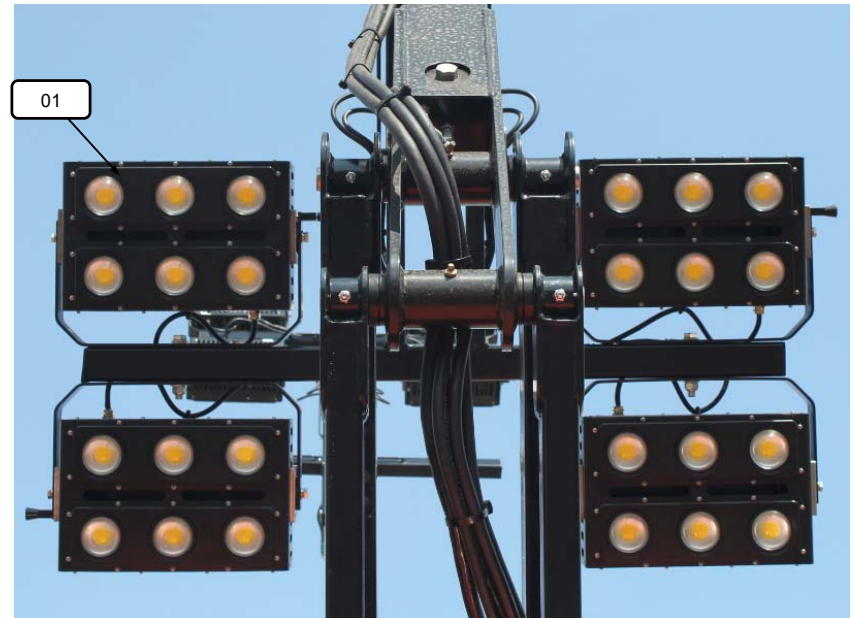
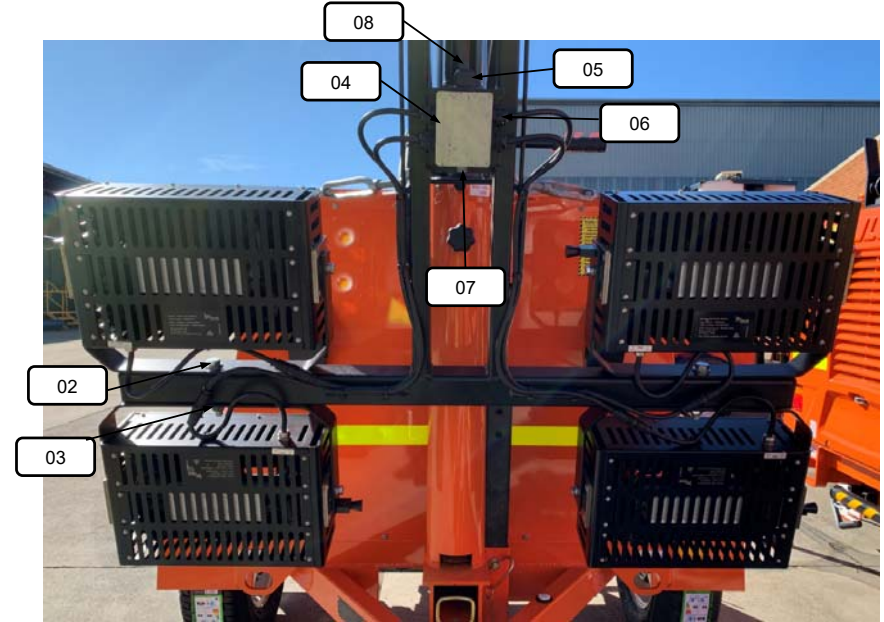
ELECTRICAL EQUIPMENT – BATTERY

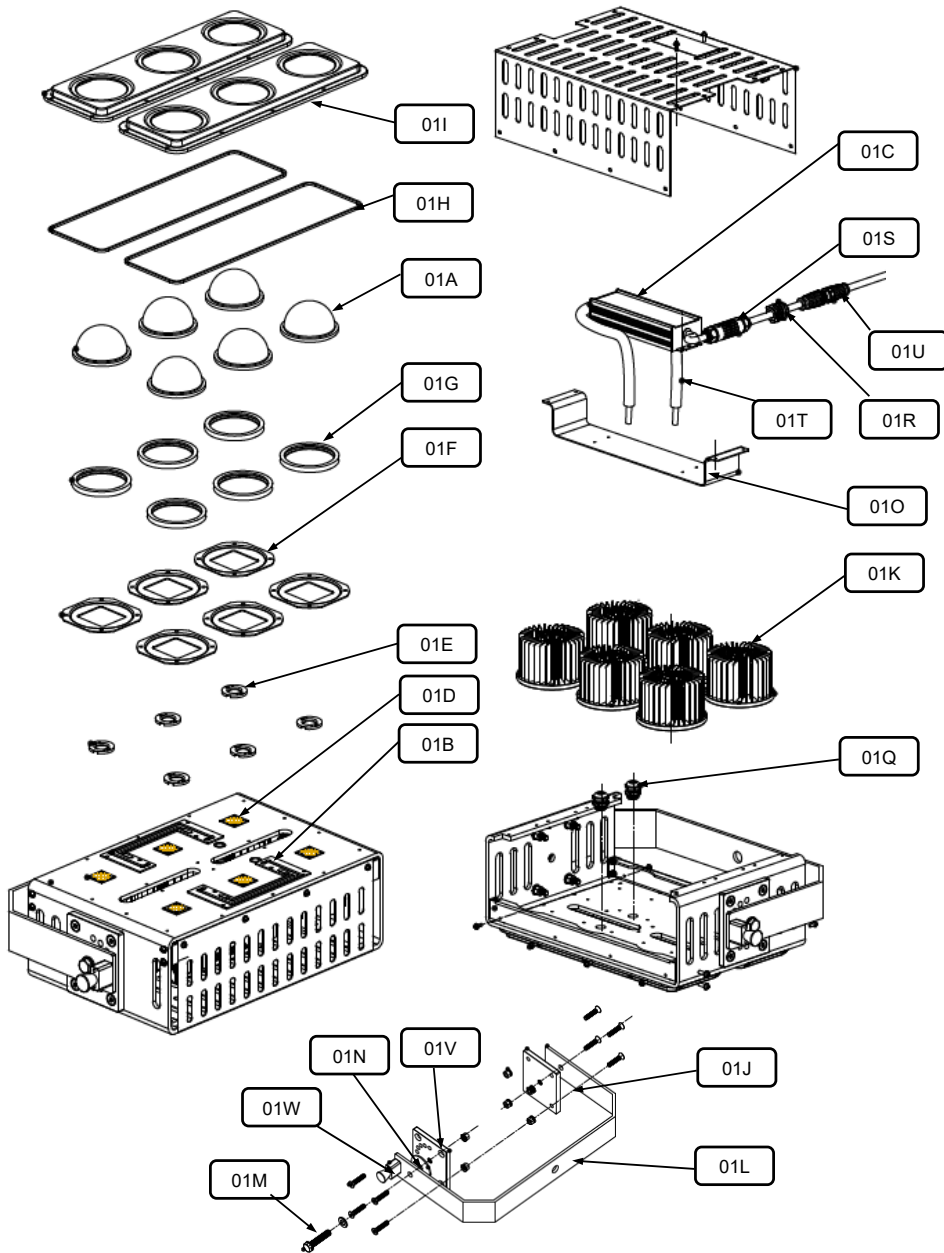


ELECTRICAL EQUIPMENT – BATTERY

SEQ.#	ITEM NO.	DESCRIPTION	QTY
01	1001257140	BATTERY, 12VOLT 90AH	1
02	1738283	TERMINAL, BATTERY LUG (+)/50	1
03	1738284	TERMINAL, BATTERY LUG (-)/50	1
04	1730727	CLAMP, BATTERY HOLD-DOWN	1
05	4360517	SWITCH, PROXIMITY	2
06	4460029	PLUG, ANDERSON 'JUMP-START'	1
07	1001172002	BRACKET, 'JUMP-START' SOCKET	1
08	2400041	FUSE, STARTER MOTOR 25 A (NOT SHOWN)	1
09	1730850	BOOT, BATTERY TERMINAL 1/0 & 2/0 - RED	1
10	1730851	BOOT, BATTERY TERMINAL 1/0 & 2/0 - BLACK	1
11	1731126	BRACKET, LOCKSAFE DOUBEL POLE	1
12	4360155	STARTER ISOLATOR, COLE HERSEE (1-PHASE)	1
13	1001209048	SWITCH, BATTERY ISOLATOR 4P	1
14	1001247860	BRACKET, STARTER ISOLATOR C-HERSE	1

ELECTRICAL EQUIPMENT – DROOP JUNCTION BOX & LED LIGHTS (LED-4)

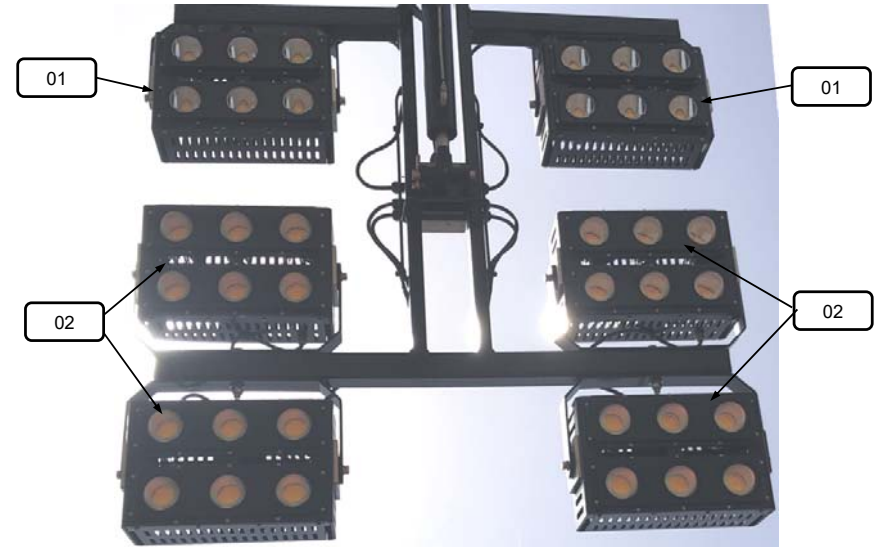
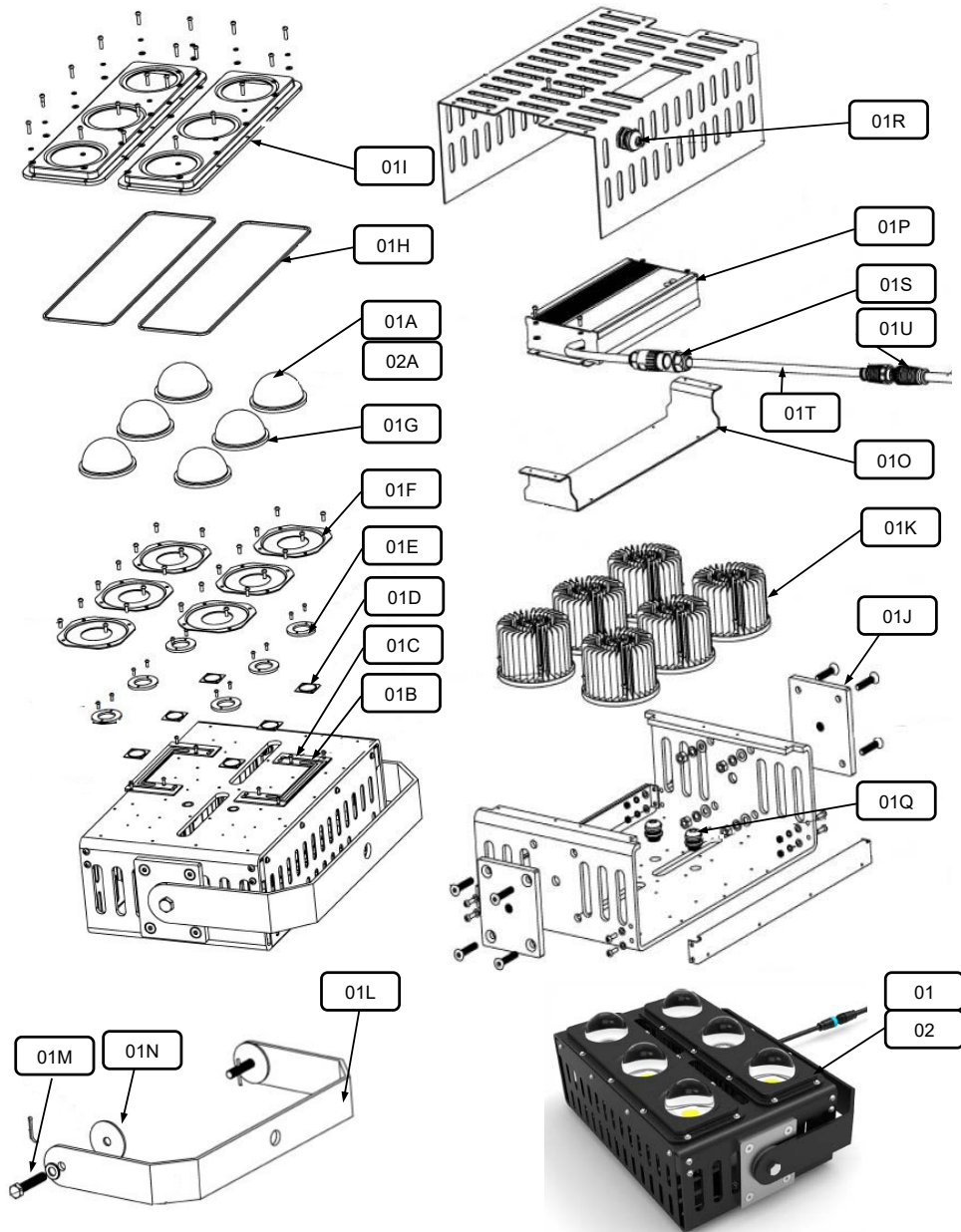




SEQ.#	ITEM NO.	DESCRIPTION	QTY
01	1001256177	LAMP, PL6F-500W-DC48V 90 DEGREE	4
01A	1001265938	LAMP, LENS 90 DEGREE 500W	A/R
01B	1001265919	LAMP, CIRCUIT BOARD 500W	A/R
01D	1001265918	LAMP, COB LIGHT SOURCE 500W	A/R
01E	1001265920	LAMP, LIGHT SOURCE COVER 500W	A/R
01F	1001265921	LAMP, LENS PLATE 500W	A/R
01G	1001265922	LAMP, LENS SEAL 500W	A/R
01H	1001252550	LAMP, LENS PLATE GASKET 400-500W	A/R
01I	1001265923	LAMP, LENS COVER 500W	A/R
01J	1001265931	LAMP, HINGE SIDE PLATE 500W	A/R
01K	1001252553	LAMP, HEAT SINK 400-500W	A/R
01L	1001265930	LAMP, TRUNION BRACKET 500W	A/R
01M	1001252555	LAMP, HINGE BOLT 400-500W	A/R
01N	1001265929	LAMP, HINGE RUBBER WASHER 500W	A/R
01O	1001252557	LAMP, DRIVER MOUNT BKT 400-500W	A/R
01C	1001265925	LAMP, DRIVER 500W BOOST	A/R
01Q	1001252559	LAMP, M16 METAL CABLE GLAND	A/R
01R	1001252560	LAMP, M20 METAL CABLE GLAND	A/R
01S	1001265927	LAMP, CONNECTOR WP 500W	A/R
01T	1001265928	LAMP, CABLE SLEEVE 120 MM	A/R
01U	1001265926	LAMP, 2 M CABLE WITH PLUG	A/R
01V	1001265932	LAMP, HINGE SIDE PLATE 500W	A/R
01W	1001265934	LAMP, LOCK PIN 500W	A/R
02	0711628	BOLT, HEX HEAD M16 X 2.0P-110 LG CLASS 8.8	2
03	1001092256	FLAT WASHSER, STEEL M16 140HV (MIN)	2
04	1001256404	BOX, LED 4 JUNCTION MACHINE	1
	1001265809	BOX, LED 6 JUNCTION MACHINE	1
05	1732410	TERMINAL GLAND NYLON 25MM	1
06	1732433	TERMINAL, GLAND NYLON 20MM	4
07	1001257345	PLUG, VENT 5.5MM SNAP FIT	
08	1001256966	CABLE, 12 CORE 2.5MM	10.4M



ELECTRICAL EQUIPMENT – DROOP JUNCTION BOX & LED LIGHTS (LED-6)



SEQ.#	ITEM NO.	DESCRIPTION	QTY
01	1001247348	LAMP, PL6F-400W-DC48V 110 DEGREE	2
01A	1001252562	LAMP, LENS 110 DEGREE 400W	A/R
01B	1001252544	LAMP, CIRCUIT BOARD 400W	A/R
01C	1001252545	LAMP, INSULATOR 400W	A/R
01D	1001252546	LAMP, COB LIGHT SOURCE 400W	A/R
01E	1001252547	LAMP, LIGHT SOURCE COVER 400W	A/R
01F	1001252548	LAMP, LENS PLATE 400W	A/R
01G	1001252549	LAMP, LENS SEAL 400W	A/R
01H	1001252550	LAMP, LENS PLATE GASKET 400W	A/R
01I	1001252551	LAMP, LENS COVER 400W	A/R
01J	1001252552	LAMP, HINGE SIDE PLATE SS 400W	A/R
01K	1001252553	LAMP, HEAT SINK 400W	A/R
01L	1001252554	LAMP, TRUNION BRACKET 400W	A/R
01M	1001252555	LAMP, HINGE BOLT 400W	A/R
01N	1001252556	LAMP, HINGE WASHER 400W	A/R
01O	1001252557	LAMP, DRIVER MOUNT BKT 400W	A/R
01P	1001252558	LAMP, DRIVER 400W	A/R
01Q	1001252559	LAMP, M16 METAL CABLE GLAND	A/R
01R	1001252560	LAMP, M20 METAL CABLE GLAND	A/R
01S	1001253965	LAMP, CONNECTOR WP 400W	A/R
01T	1001253966	LAMP, 300 MM CABLE WITH PLUG	A/R
01U	1001253967	LAMP, 1500 MM CABLE WITH PLUG	A/R
02	1001247047	LAMP, PL6F-400W-DC48V 60 DEGREE	4
02A	1001252561	LAMP, LENS 60 DEGREE 400W	A/R

RECOMMENDED SPARE PARTS

ITEM DESCRIPTION	PART NO
FAN, BELT KUBOTA Z482 EG	1001265321
HOSE, RADIATOR TOP Z482 EG	1001265320
HOSE, RADIATOR BOTTOM Z482 EG	1001265317
FILTER, AIR KUBOTA Z482	1001212174
FUEL FILTER	1730930
FILTER, OIL Z482 EG	1001265352
FILTER FUEL IN LINE	7017992
VALVE, FUEL ONE WAY	1001265717
FUSE, 30 AMP	8229245
SWITCH, CIRCUIT BREAKER 15 A	4360070
RELAY	1001171585
CONTROLLER, LED LT ENGINE AUTO	1001171137
FUSE, FUSMP205-1A 250V CFF [ENG. SPEED SENSOR] HOLDER, FUSHF-011 M205SC IN-LINE	1001312647 1001312648
SOLENOID, HYDRAULIC PUMP MOTOR	1730549
SEAL, 3/8UNC 750 SERIES WASHER THREAD (PRESSURE RELIEF VALVE ADJUSTMENT SCREW)	1001246647
VALVE, SV08B CARTRIDGE	1001228481
COIL, SV08B VALVE 12 V	1001228480