



Illustrated Parts Manual

Lighting Tower Model

LED-6R

1001307579

Revision B

February 14, 2024

Refurbished 6308AN
(LED-6R)

Reference Manuals

1001261282 LED-6R Operation & Safety Manual

1001307578 LED-6R Service & Maintenance Manual



LED-6R

SECTION THREE

ILLUSTRATED PARTS MANUAL

CONTENTS

FIGURE 1.0	TRAILER LEFT SIDE VIEW	3-3
FIGURE 1.1	TRAILER RIGHT SIDE VIEW	3-5
FIGURE 1.2	TRAILER REAR VIEW	3-7
FIGURE 1.3	TRAILER LOWER REAR VIEW	3-8
FIGURE 1.4	TRAILER DRAWBAR/FRONT END	3-9
FIGURE 1.5	FRONT PANEL	3-11
FIGURE 2.0	TRAILER AXLE AND WHEEL HUBS	3-12
FIGURE 3.0	Z482E/PM5G GENSET RIGHT-SIDE VIEW	3-13
FIGURE 3.1	Z482E/PM5G GENSET RIGHT-REAR VIEW	3-16
FIGURE 3.2	Z482E MUFFLER (SIDE PANEL TAILPIPE)	3-18
FIGURE 3.3	Z482E/PM5G GENSET LEFT-SIDE VIEW	3-19
FIGURE 3.4	Z482E/PM5G FUEL TANK & ACCESSORIES	3-20
FIGURE 4.0	D905/FB4-48 GENSET LEFT SIDE VIEW	3-21
FIGURE 4.1	D905/FB4-48 GENSET RIGHT SIDE VIEW	3-23
FIGURE 4.2	D905/FB4-48 RADIATOR OVERFLOW BOTTLE	3-24
FIGURE 5.0	MAST ASSEMBLY	3-25
	HYDRAULIC SYSTEM	
FIGURE 5.1	MAST CYLINDERS/ACTUATORS	3-28
FIGURE 5.2	POWERPACK	3-29
	ELECTRICAL SYSTEM	
FIGURE 6.0	CONTROL BOX	3-31
FIGURE 6.1	POWER DISTRIBUTION	3-33
FIGURE 6.2	BATTERY & ISOLATORS	3-35
FIGURE 6.3	LIGHTHEAD & LED LIGHTS	3-37

FIGURE 1.0 TRAILER LEFT SIDE VIEW

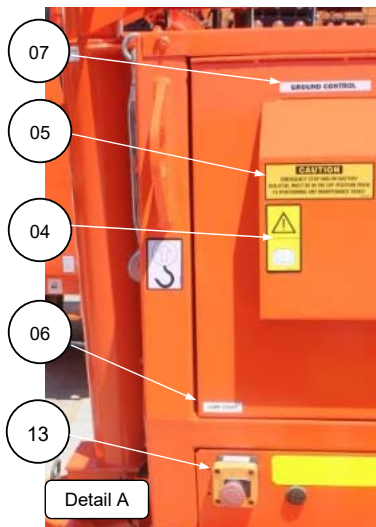
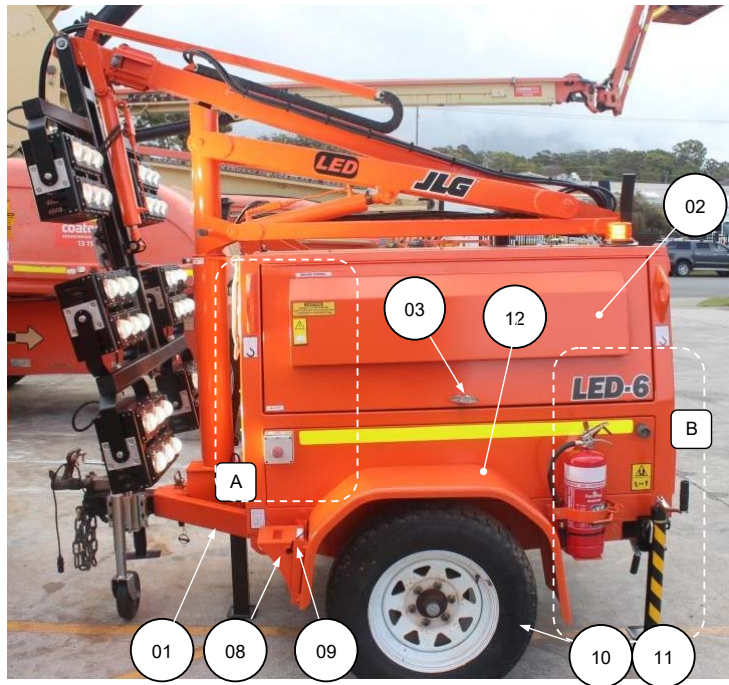


FIGURE 1.0 TRAILER LEFT SIDE VIEW – PARTS LIST

ITEM	PART NUMBER	DESCRIPTION	QTY
01	1733334	FRAME, TRAILER FRAME	1
02	1733280	VENTED DOOR, ASSEMBLY LH	1
03	1001178155	HANDLE, T-DOOR	1
-	1730790	HANDLE, LOCKING TAB	A/R
04	8005670	DECAL, "READ OPERATOR'S MANUAL"	1
05	1001250479	CAUTION DECAL, "LED LT UPGRADE"	1
06	1001162608	DECAL, "JUMP START"	
07	1700037	DECAL, 'GROUND CONTROL'	1
08	1733735	CHOCK, URETHANE WHEEL	2
09	1733736	BRACKET, WHEEL CHOCK MOUNTING	2
10	1001185696	WHEEL RIM	2
11	1730618	TYRE, 205/80 X 16"	2
-	1001257569	WHEEL, TYRE ASSY 16"	2
12	1734233	MUDGUARD, LH	1
13	1733047	EMERGENCY STOP SWITCH	1
14	1734123	MOUNT BRACKET, 4.5 kg FIRE EXTINGUISHER	1
15	1733395	FIRE EXTINGUISHER, 4.5 kg	1
16	1730750	STOP BLOCK, JACK STORAGE	2
17	1001173775	DECAL, 'LED-6'	2
18	1001185541	MOUNT, GAS STRUT BALL	4
19	1001185540	STRUT, DOOR GAS	2
20	1734188	SEAL, DOOR RUBBER	5
21	0940036	BUMPER, DOOR RUBBER	4

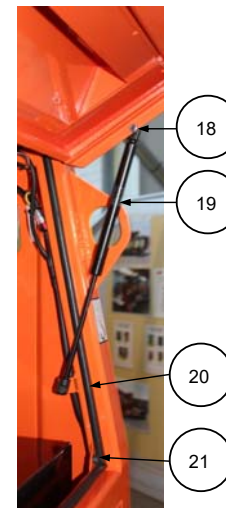


FIGURE 1.1 TRAILER RIGHT SIDE VIEW

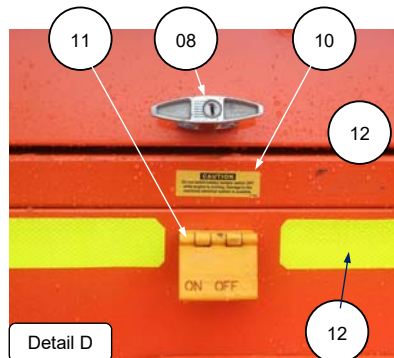
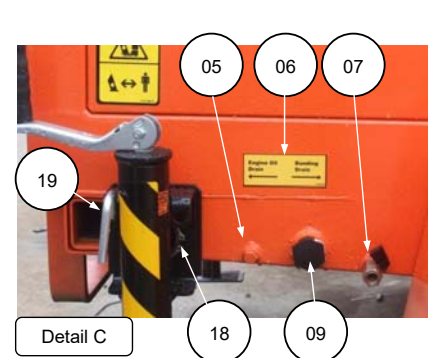
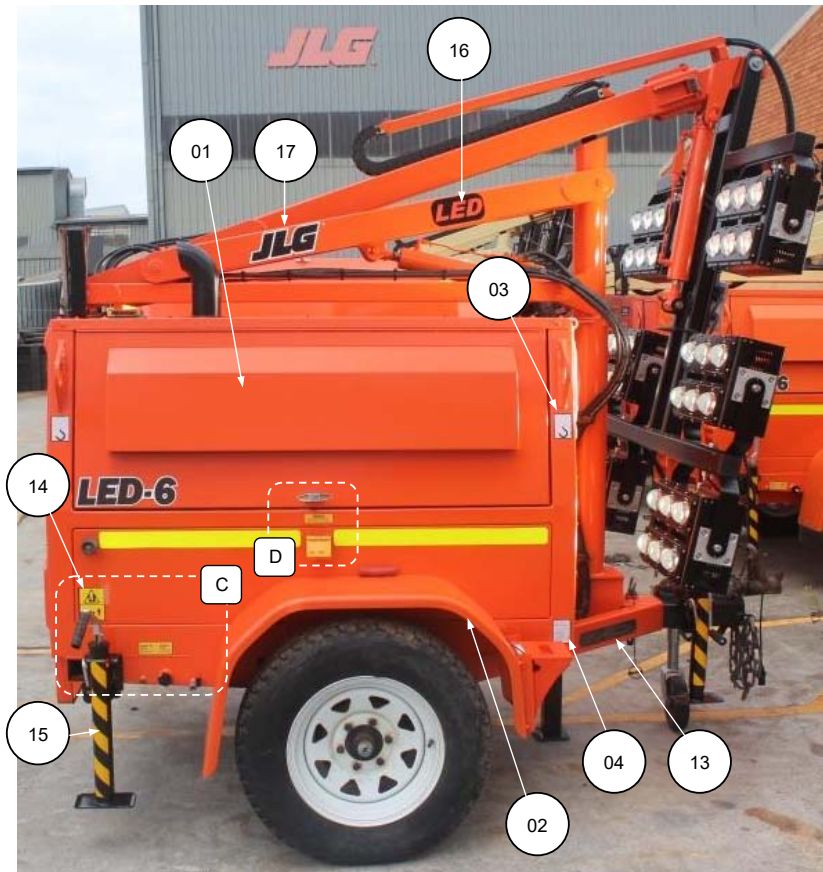
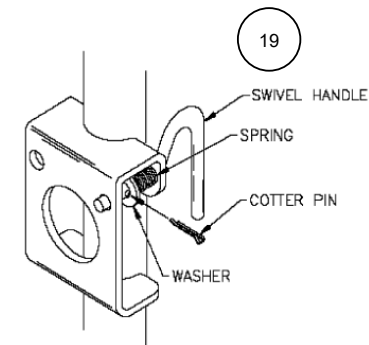


FIGURE 1.1 TRAILER RIGHT SIDE VIEW – PARTS LIST

ITEM	PART NUMBER	DESCRIPTION	QTY
01	1733764	VENTED DOOR, ASSEMBLY RH	1
02	1734232	MUDGUARD, RH	1
03	1701500	DECAL, 'LIFT' POINT	4
04	1702300	DECAL, 'TIE-DOWN' POINT	2
05	1734046	PLUG, 1/4" BSPP DRAIN	1
06	1734185	DECAL, 'ENGINE OIL AND BUNDING DRAIN'	1
07	1734046	COCK, 1/4" BSPP M-F DRAIN	1
08	1730529	HANDLE, T-DOOR	1
-	1730790	HANDLE, LOCK TAB	A/R
09	1001204664	PLUG, 1.0" BSPT PLASTIC	1
10	1730913	DECAL, 'CAUTION BATTERY ISOLATOR'	1
11	1733733	STARTER ISOLATOR, COLE HERSEE	1
12	1731337	TAPE, PRISMATIC REFLECTIVE 50 mm	A/R
13	1737103	DECAL, 'VIN PLATE IDENTIFICATION'	1
14	1701785	DECAL, CRUSHING HAZARD	2
15	1737100	TAPE, BLACK/YELLOW REFLECTOR	2
16	1737100	DECAL, 'JLG' BLACK 3.25" HEIGHT	2
17	1001169783	DECAL, 'LED'	2
18	A330014	CIRCLIP, OUTRIGGER ARM/JACK	A/R
19	1001265715	KIT, SWIVEL PIN 3/8" DL JACK	A/R



LED-6R

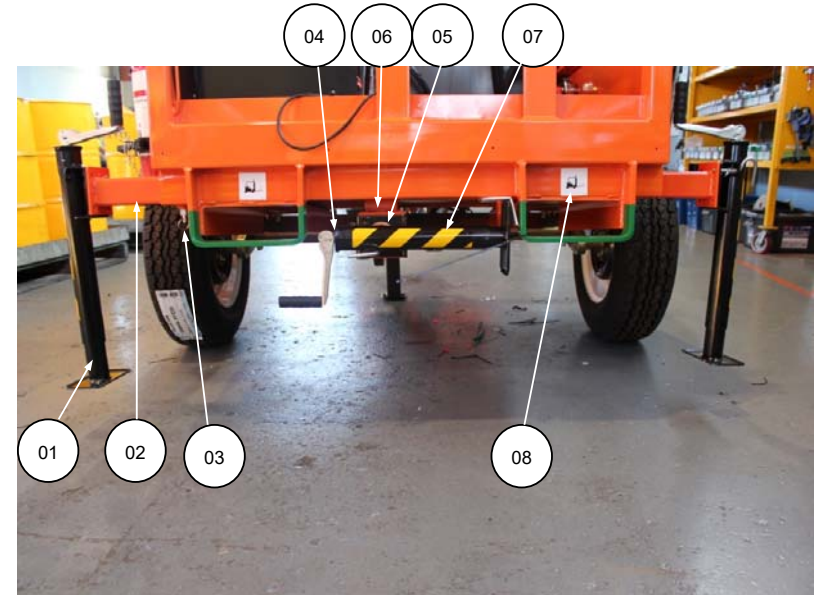
FIGURE 1.2 TRAILER REAR VIEW



ITEM	PART NUMBER	DESCRIPTION	QTY
01	1734092	PANEL, 6308AN II ROOF FINISHED	1
02	1731328	PANEL, REAR FINISHED	1
03	1730534	CRADLE, MAST SUPPORT	1
04	1732597	WEAR PAD, MAIN BOOM (MAST REST)	1
05	1730914	LAMP, LICENCE PLATE	1
06	1001214200	TRAILER TAIL-LIGHT MULTI 12/24V	2
06A	1001172071	HARNES, TAIL-LIGHT PN 5C430	1
06B	1001172072	HARNES, TAIL-LIGHT PN 4C110	1
07	1702300	DECAL, 'TIE-DOWN' POINT	2
08	1001172068	BEACON, LED LIGHTING TOWER	1
09	1737100	TAPE, RETRO-REFLECTIVE YELLOW/BLACK	1
10	1001215741	SHROUD, Z482E EXHAUST PIPE	1

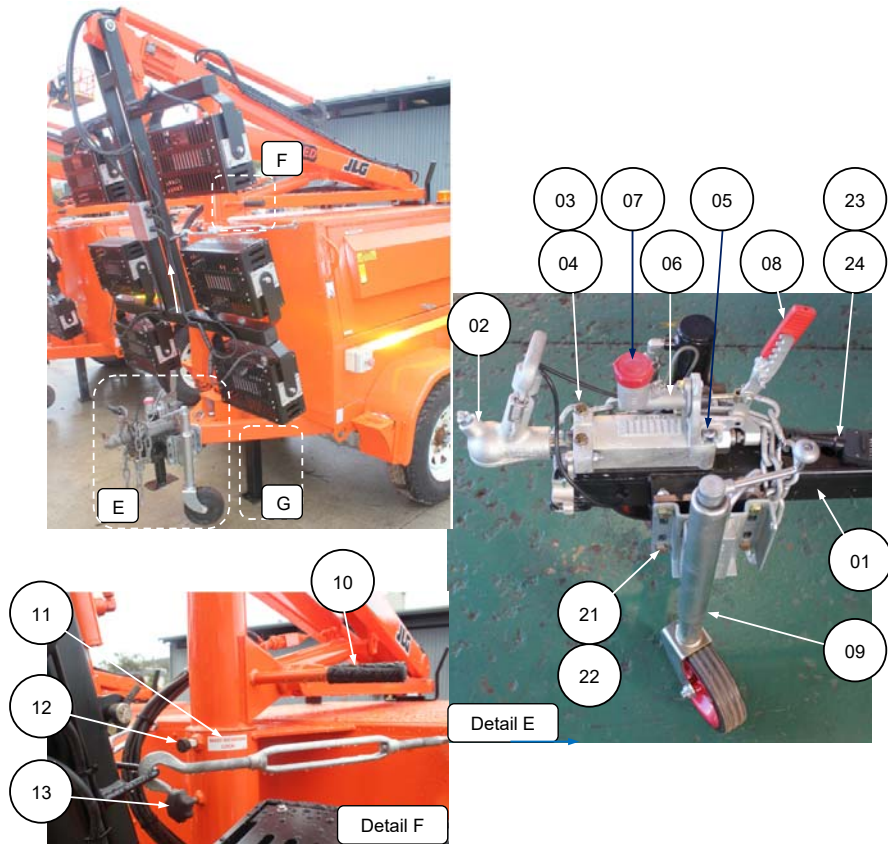
LED-6R

FIGURE 1.3 TRAILER LOWER REAR VIEW



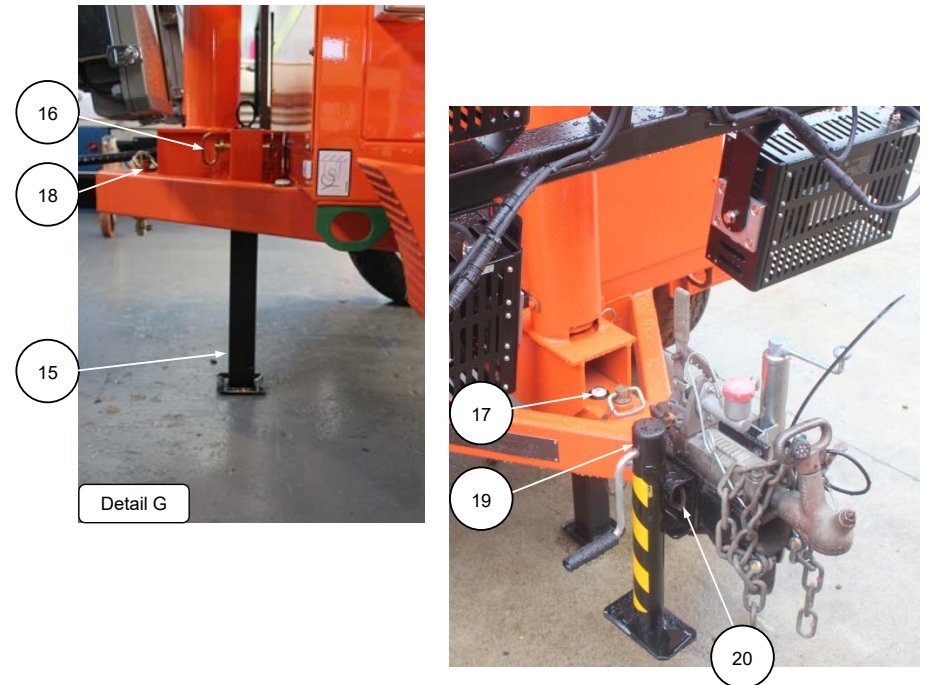
ITEM	PART NUMBER	DESCRIPTION	QTY
01	A330010	OUTRIGGER, SIDE JACK ASSEMBLY	2
02	1734353	OUTRIGGER, SIDE EXTENSION ARM	2
03	3422369	PIN, SPRING LOADED PLUNGER	3
04	A330008	OUTRIGGER, REAR JACK ASSEMBLY	1
05	A330014	CIRCLIP, OUTRIGGER ARM/JACK	3
06	1733737	OUTRIGGER, REAR EXTENSION ARM	1
07	1737103	TAPE, REFLECTIVE BLACK/YELLOW	3
08	1703073	DECAL, 'FORKLIFT POINT'	2

FIGURE 1.4 TRAILER DRAWBAR/FRONT END



ITEM	PART NUMBER	DESCRIPTION	QTY
01	1730901	WELDMENT, FRONT DRAWBAR EXTENSION	1
02	1735456	COUPLING, OVERRIDE TOWBALL	1
03	0681828	1/2" UNC X 3.5" HEX HEAD BOLTS SAE GRADE 8	2
04	4891800	1/2" HARDENED FLAT WASHER	2
05	3931856	1/2" UNC X 3.5" SOCKET HEAD CAP SCREW ASTM 574	2
06	1737060	CYLINDER, HYDRAULIC BRAKE	1
07	1734707	CAP, HYDRAULIC BRAKE RESERVOIR	1
08	1730578	HANDLE, PARKING BRAKE	1

FIGURE 1.4 TRAILER DRAWBAR/FRONT END



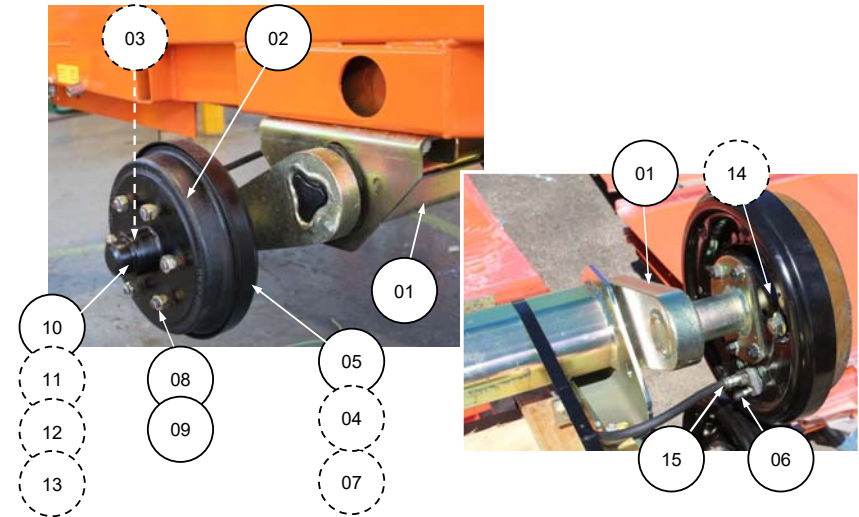
ITEM	PART NUMBER	DESCRIPTION	QTY
09	1730952	WHEEL, JOCKEY	1
10	1730797	GRIP, MAST ROTATE HANDLE	1
11	1730747	DECAL, MAST ROTATION LOCK	1
12	3422744	PIN, MAST INDEXING PLUNGER	1
13	1734165	KNOB, MAST ROTATE LOCKING	1
14	1730580	LEG, TRANSPORT	1
15	1733192	PIN, HITCH TRANSPORT LEG	1
16	1733193	CHAIN, HITCH PIN RETAINING	1
17	1733106	BUBBLE, LEVELLING	1
18	1733267	PIN, DRAWBAR ASSEMBLY	1
19	A650235	JACK, FRONT OUTRIGGER (DRAWBAR)	1
20	A330014	CIRCLIP, OUTRIGGER	1
21	0681812	BOLT, HEX SCREW 1/2" UNC-1.5" SAE GRADE 8	4
22	3271805	NUT, HEX NYLOC 1/2" UNC GRADE 6	4
23	1001172071	CABLE, 5C21B TRAILER	6.0 m
24	1737066	PLUG, TRAILER 7-PIN	1

FIGURE 1.5 FRONT PANEL



ITEM	PART NUMBER	DESCRIPTION	QTY
01	1730607	PANEL, FINISHED FRONT	1
02	1730759	EYEBOLT, M10 x 100 mm Zn PLATED	2
03	1001171971	TURNBUCKLE, GALVANISED 16 mm LED LT	2
04	1730773	BUMPER,RUBBER TURNBUCKLE (OPTIONAL)	2
05	1320219	HOSE CLAMP, STEEL P-CLIP 2.5"	2

FIGURE 2.0 TRAILER AXLE AND WHEEL HUBS



ITEM	PART NUMBER	DESCRIPTION	QTY
01	1730891	AXLE ASSEMBLY C/W BRAKES (1650 kg RATING)	1
02	1730825	HUB, BRAKE DRUM	2
03	1730915	KIT, WHEEL BEARING AND SEAL	2
04	1730577	KIT, BRAKE SHOE	2
05	1734486	PLATE, PAIR BACKING	2
06	1730884	NIPPLE, BRAKE LINE BLEED	2
07	1730882	CYLINDER, WHEEL BRAKE DRUM	2
08	1730885	STUD, WHEEL	12
09	1730886	NUT, WHEEL	12
10	1730887	CAP, DUST	2
11	1730888	NUT, AXLE 3/4"UNF	2
12	1730889	WASHER, FLAT 3/4"	2
13	1730890	PIN, SPLIT 3.2 x 32	2
14	1730920	SEAL, WHEEL BEARING SEAL	2
15	1730766	KIT, BRAKE LINE (FOR AXLE ASSEMBLY 1730891) INCLUDES THE FOLLOWING ITEMS	1
	1733808	TUBE, DRAW BAR	(1)
	1733809	TUBE, SHORT LEFT	(1)
	1733810	TUBE, SHORT RIGHT	(1)
	1733811	FITTING, TEE	(1)
	1733812	HOSE, DRAWBAR BRAKELINE	(1)
	1733813	HOSE, AXLE BRAKELINE	(2)
	1733814	CLIP, RETAINING	(3)

FIGURE 3.0 Z482E/PM5G GENSET

RIGHT SIDE VIEW

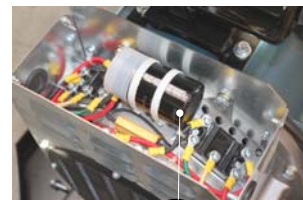
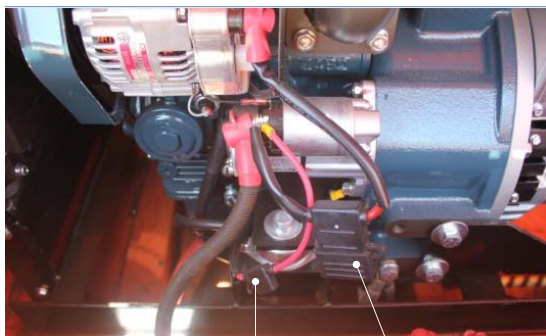
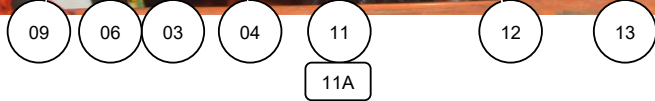
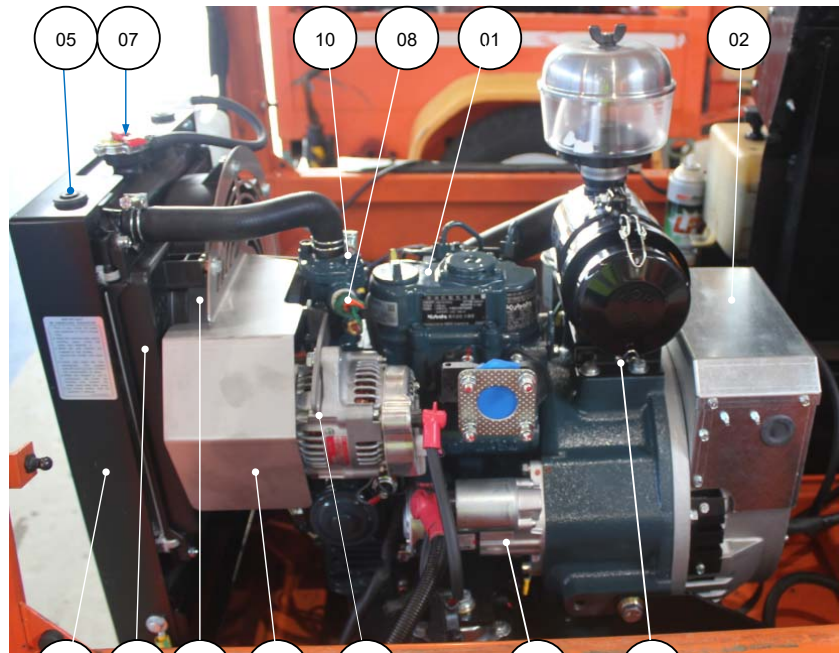


FIGURE 3.0 Z482E/PM5G GENSET

RIGHT SIDE VIEW

ITEM	PART NUMBER	DESCRIPTION	QTY
01	1001258445	ENGINE, KUBOTA Z482EG (1800 rpm)	1
02	1001258444	GENERATOR, PM5G 48V (1800 rpm)	1
	1001306398	RECTIFIER BRIDGE, 100A 3PH FOR 1800 RPM PMG	-
03	1001265356	FAN, RADIATOR Z482 EG ENGINE	1
-	1001269228	GUARD, ENGINE FAN Z482EG KU	A/R
04	1001272031	GUARD, FAN-BELT Z482EG	1
05	1001265318	MOUNT, RUBBER BUSH RADIATOR	4
06	1001265319	RADIATOR, Z482EG ENGINE	1
07	1001258616	CAP, RADIATOR KUBOTA Z482EG	1
08	1730796	SENDER, COOLANT TEMPERATURE	1
09	1001255887	MOUNT, Z482E RADIATOR	1
10	70004853	ASSEMBLY, WATER PUMP	1
11	1001265351	ENGINE, ALTERNATOR Z482 EG	1
11A	KU1754864422	STAY / BRACKET, ALTERNATOR	1
12	1001265354	ENGINE STARTER MOTOR	1
13	1001260704	MOUNTING BRACKET, Z482 AIR CLEANER	1
14	7346000126	FUSE HOLDER 12 GA INLINE	1
	8229245	FUSE, 30 A	1
15	KTMBFH	HOLDER, MAXI BLADE FUSE	1
	KTBMF50	FUSE, 50 A MAXI BLADE	1
16	1001306076	CAPACITOR, MECC-ALTE 9710303016	A/R

Z482 ENGINE HARNESS CONNECTORS (NOT SHOWN)

ENGINE SPEED SENSOR (1001297172)

SEQ.#	ITEM NO.	DESCRIPTION	QTY
01	1001259285	CONNECTOR, FEMALE 3WAY SPEED SENSOR	1
02	1001259291	TERMINAL, FEMALE TE1188 SPEED SENSOR	3
03	1001259312	SEAL GREEN CA1082	3

COOLANT TEMP SENSOR

SEQ.#	ITEM NO.	DESCRIPTION	QTY
01	1001259274	CONNECTOR, FEMALE 2WAY TEMP SENSOR	1
02	1001259287	TERMINAL, FEMALE TE1176 TEMP SENSOR	2
03	1001259313	SEAL BROWN CA1086	2

ACTUATOR SOLENOID (KU1E41160013)

SEQ.#	ITEM NO.	DESCRIPTION	QTY
01	1001259275	CONNECTOR, FEMALE 2WAY ACTUATOR	1
02	1001259290	TERMINAL, FEMALE TE1121 SOLENOID	2
03	1001259314	SEAL BLACK CA1085	2

ECU

SEQ.#	ITEM NO.	DESCRIPTION	QTY
01	1001259273	CONNECTOR, FEMALE 44WAY ECU	1
02	1001259286	TERMINAL, FEMALE TE1831 ECU	21
03	1001259315	BLANKING PIN BLACK CA1192	23

FIGURE 3.1 Z482E/PM5G GENSET

RIGHT REAR VIEW

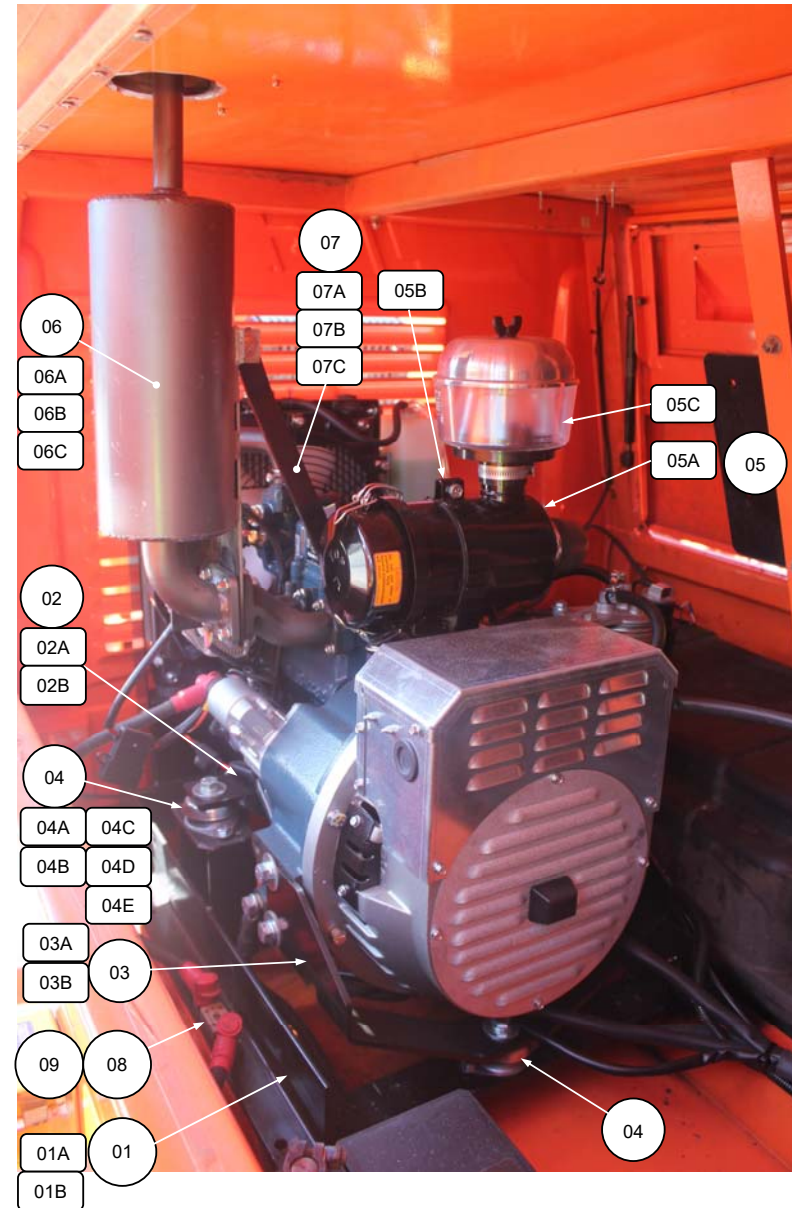
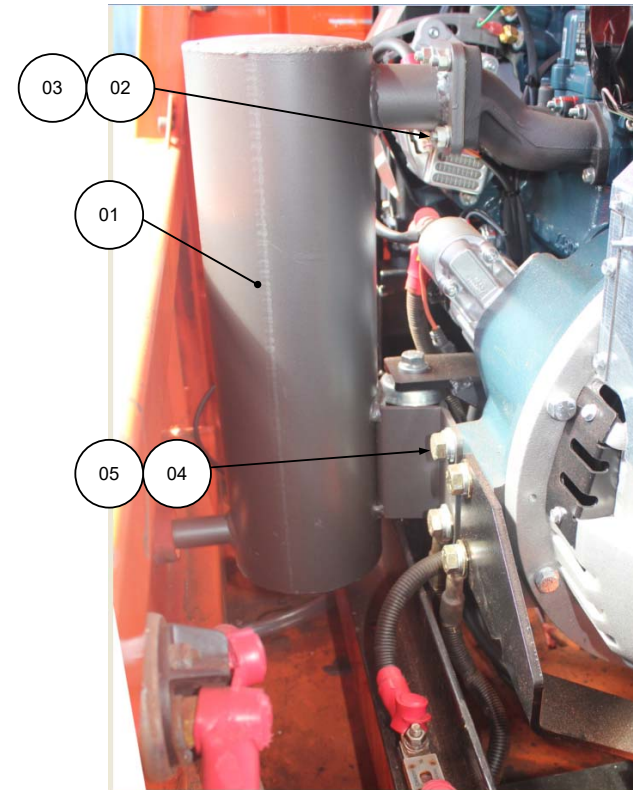


FIGURE 3.1 Z482E/PM5G GENSET

RIGHT REAR VIEW

ITEM	PART NUMBER	DESCRIPTION	QTY
01	1001263931	FRAME, Z482E/PM5G CRADLE	1
01A	0760814	HEX HEAD SCREW, M8 X 1.25 - 30 CLASS 8.8 DIN 933	8 A/R
01B	5240800	FLAT WASHER, M8 HARDENED FORM A DIN 9201	8 A/R
02	1001263932	BRACKET, LED-6R Z482E ENGINE	2
02A	1001119929	HEX HEAD SCREW, M8 X 1.25 - 30 CLASS 8.8 DIN 933	8
02B	5240800	FLAT WASHER, M8 HARDENED FORM A DIN 9201	8
03	1001263933	SUPPORT, LED-6R PM5G	1
03A	0761014	HEX HEAD SCREW, M10 X 1.5 - 30 CLASS 8.8 DIN 933	4
03B	5241000	FLAT WASHER, M10 HARDENED FORM A DIN 9201	4
04	1001209186	MOUNT, ISOLATOR M135219 MD-D	3
04A	0761212	HEX HEAD SCREW, M12 X 1.75 - 25 CLASS 8.8 DIN 933	3
04B	5241200	FLAT WASHER, M12 HARDENED FORM B DIN 9201	3
04C	0760812	HEX HEAD SCREW, M8 X 1.25 - 25 CLASS 8.8 DIN 933	6
04D	5240800	FLAT WASHER, M8 HARDENED FORM A DIN 9201	12
04E	3290805	NYLOC NUT, M8 CLASS 8 DIN 985	6
05	1001212174	AIR FILTER, KUBOTA Z482 ASSEMBLY COMPLETE	1
05A	7023174	AIR CLEANER/METAL HOUSING	1
05B	1001229321	BRACKET, Z482 AIR CLEANER	2
05C	1001118022	FILTER, PRE-CLEANER BOWL (DONALDSON)	1
06	1001211952	MUFFLER, LED-6R FLOWTECH	1
06A	1001264572	BRACKET, FLOWTECH MUFFLER	1
06B	4831900	SPRINGER WASHER, M8 TYPE B DIN 127	4
06C	3290801	HEX NUT, M8 x 1.25 CLASS 8 DIN 934	4
07	1001264571	BRACE, Z482E FLOWTECH MUFFLER	1
07A	0760808	HEX HEAD SCREW, M8 X 1.25 - 16 CLASS 8.8 DIN 933	2
07B	5240800	FLAT WASHER, M8 HARDENED FORM A DIN 9201	2
07C	3290801	HEX NUT, M8 CLASS 8 DIN 980	2
08	2400044	FUSE HOLDER ENGINE STARTER MOTOR	1
09	2400041	FUSE, 200 A ENGINE STARTER MOTOR	1
10	KU1G65974120	FAN GUARD, Z482E ENGINE	1
	1001272031	COVER, FAN-BELT KU Z482 ENGINE	1

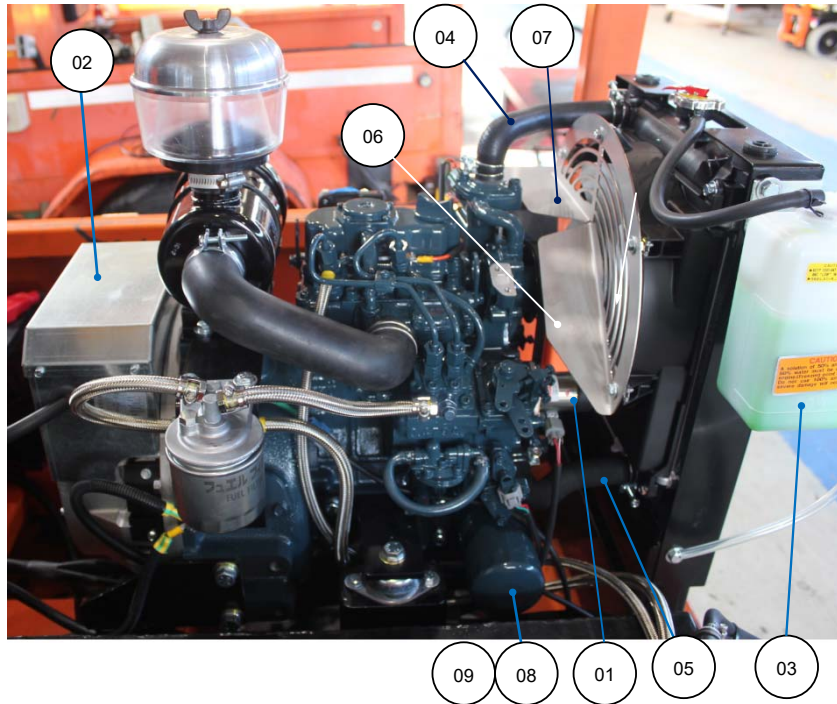
FIGURE 3.2 Z482E MUFFLER (SIDE-PANEL TAILPIPE)



ITEM	PART NUMBER	DESCRIPTION	QTY
01	1001274341	MUFFLER, LED-6R FLOWTECH	1
02	5240800	SPRINGER WASHER, M8 TYPE B DIN 127	4
03	3290801	HEX NUT, M8 x 1.25 CLASS 8 DIN 934	4
04	4891800	FLAT WASHER, 1/2" X .187" THICK HARDENED RC 38-48	4
05	0681808	HEX HEAD SCREW, 1/2" UNC-13 GRADE 8 SAE J429	4

FIGURE 3.3 Z482E/PM5G GENSET

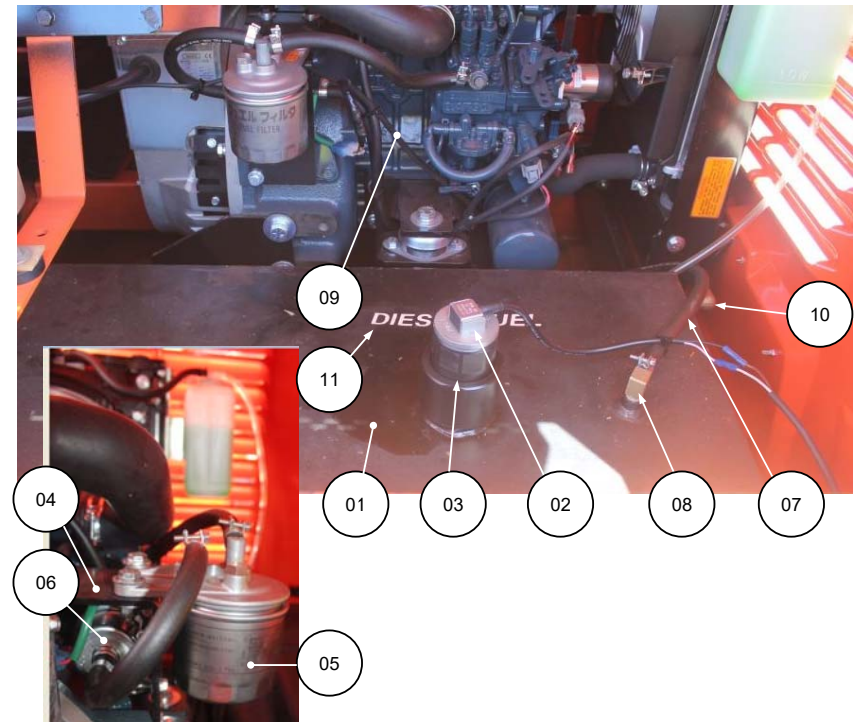
LEFT SIDE VIEW



ITEM	PART NUMBER	DESCRIPTION	QTY
01	1001258445	ENGINE, KUBOTA Z482EG (1800 rpm) ELECTRONIC GOVERNOR	REF
02	1001258444	GENERATOR, PM5G – 48V (1800 rpm)	REF
	1001306076	CAPACITOR, PMG FOR 1800 RPM	-
	1001306398	RECTIFIER BRIDGE, 100A 3PH FOR 1800 RPM PMG	-
03	1001212181	CONTAINER, Z482 COOLANT BOTTLE	1
04	1001265320	HOSE, RADIATOR INLET (TOP)	1
05	1001265317	HOSE, RADIATOR OUTLET (BOTTOM)	1
06	1001265321	BELT, Z482E ENGINE FAN	1
07	1001272031	GUARD, FAN-BELT Z482EG	1
08	1001265352	FILTER, OIL Z482 EG ENGINE	1
09	1001265353	WASHER, PLAIN OIL FILTER SWAP	1
10	70000297	OIL PRESSURE SENDER	1

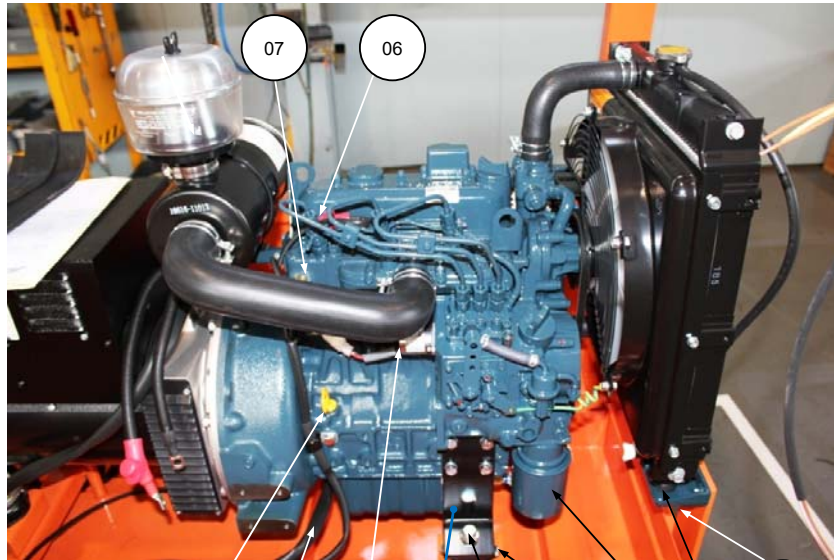
* When ordering replacement diesel engine or permanent magnet generator parts please quote the engine/generator's make, type, code, and serial number listed on the manufacturer's label affixed to the engine block or generator terminal box.

FIGURE 3.4 Z482E/PM5G FUEL TANK AND CABIN ACCESSORIES

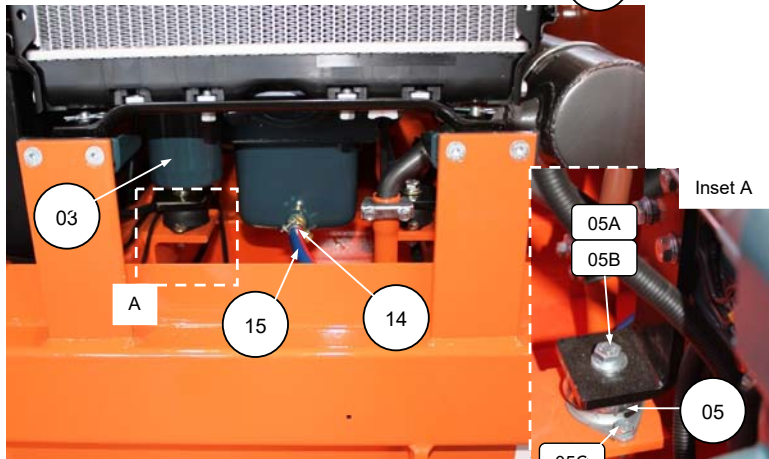
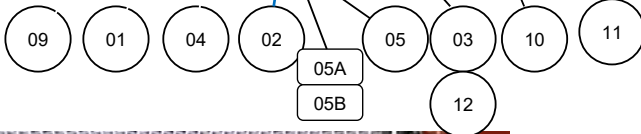


ITEM	PART NUMBER	DESCRIPTION	QTY
01	1733282	FUEL TANK, AN/LED-6R SERIES (PLASTIC & STEEL TANKS)	1
02	1001259061	SENSOR, AN STL TANK FUEL LEVEL	1
03	1001258181	ADAPTER-MECH, FUEL TANK SENDER	1
04	1001263898	BRACKET, FUEL FILTER & PUMP	1
05	1730930	FILTER, ENGINE FUEL	1
06	1001265403	FUEL PUMP, ELECTRIC	1
07	1735652	HOSE, FUEL SUPPLY-LINE 5/16"	1
08	1001187892	ELBOW FITTING, 5/16" HOSETAIL-1/4" BSPT	1
09	1735576	HOSE, FUEL RETURN-LINE 3/16"	1
10	1730939	ELBOW FITTING, 1/4" HOSETAIL-1/4" BSPT	1
11	1700200	DECAL, "DIESEL FUEL"	1

FIGURE 4.0 D905 /FB4-48 GENSET



LEFT SIDE VIEW



LOWER FRONT VIEW

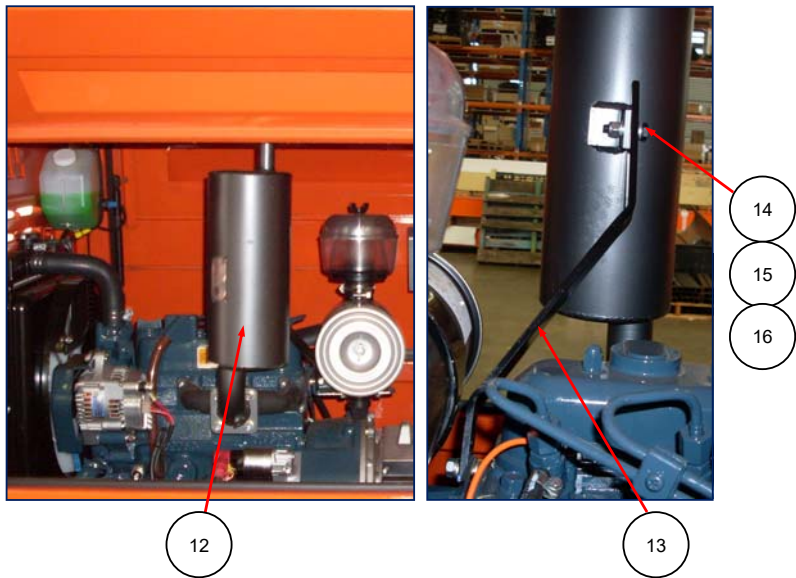
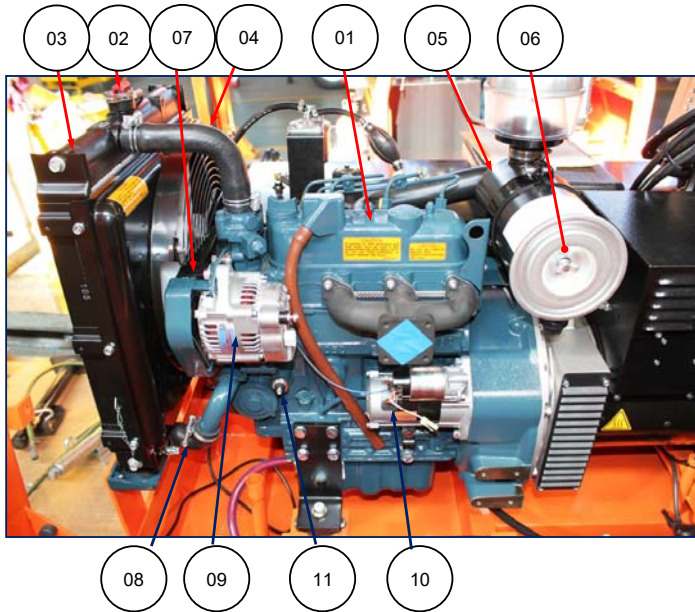
FIGURE 4.0 D905/FB4-48 GENSET
LEFT SIDE VIEW & LOWER FRONT VIEW

ITEM	PART NUMBER	DESCRIPTION	QTY
01	1001178292	LOOM, KUBOTA 905 ENGINE	1
02	1001171582P	BRACKET, ENGINE MOUNTINGS	2
03	2120929	FILTER, D905 ENGINE OIL	1
04	1730966	SOLENOID, ENGINE RUN	1
05	1001209186	MOUNT, ISOLATOR M135219 MD-D (REPLACE MOUNTS IN PAIRS)	2
05A	0711215	BOLT, HEX HEAD M12 x 35 CLASS 10.9	2
05B	4812100	WASHER, FLAT M12	2
05C	0760814	BOLT, HEX HEAD M8 x 30 CLASS 8.8	4
05D	3290805	NUT, HEX NYLOC M8 CLASS 8	4
05E	4811900	WASHER, FLAT M8	8
06	1730935	GLOW PLUGS D905	3
07	1730796	SENSOR, D905 ENGINE TEMPERATURE	1
08	1734130	BRACKET, RADIATOR MOUNT	2
09	1730907	DIPSTICK, ENGINE OIL	1
10	1734127	MOUNT, RADIATOR TOP	1
11	1734126	MOUNT, RADIATOR BOTTOM	2
12	16286-4343-0	HOLDER, FUEL FILTER (KUBOTA)	1
13	1730930	FILTER, ENGINE FUEL FILTER	1
14	1001161497	DRAIN COCK, FUMOTO F103N	1
15	1733314	HOSE, ENGINE OIL DRAIN	1

LED-6R

FIGURE 4.1 D905 + FB4-48/100 GENSET

RIGHT SIDE VIEW



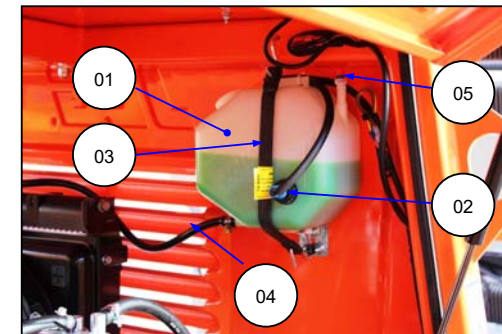
LED-6R

FIGURE 4.1 D905 + FB4-48/100 GENSET

RIGHT SIDE VIEW

ITEM	PART NUMBER	DESCRIPTION	QTY
01	1001185703	ENGINE, D905 KUBOTA DIESEL KU1909411000	1
02	1001148786	CAP, PRESSURE RELEASE RADIATOR	1
03	1930953	RADIATOR, ENGINE D905	1
04	1730954	HOSE, RADIATOR TOP HOSE	1
05	1730964	HOUSING,D905 ENGINE AIR FILTER	1
06	1730963	FILTER ELEMENT, D905 ENGINE AIR	1
07	1730962	BELT, D905 ENGINE FAN	1
	1734836	UPPER GUARD, D905 ENGINE FAN BELT	1
	1734835	LOWER GUARD, D905 ENGINE FAN BELT	1
08	1730962	HOSE, RADIATOR LOWER HOSE	1
09	1730956	ALTERNATOR, DENSO 12 V	1
10	1730871	MOTOR, D905 ENGINE STARTER	1
11	1730874	SENSOR, OIL PRESSURE	1
12	1001211952	MUFFLER, TECHFLOW EXHAUST	1
	1001264572	BRACKET, TECHFLOW	1
13	TBA	BRACKET,EXHAUST MOUNT	1
14	0770810	BOLT, M8 X 20ZP 8.8	1
15	5240800	WASHER 8mm	2
16	3290805	NUT, SELF LOCKING M8	1

FIGURE 4.2 D905/FB4-48 RADIATOR OVERFLOW BOTTLE



ITEM	PART NUMBER	DESCRIPTION	QTY
01	1730785	BOTTLE, RADIATOR OVERFLOW	1
02	1730918 1730919	SENSOR, WATER LEVEL KIT, WATER LEVEL SENSOR	1
03	1730791	KIT, RUBBER STRAP BRACKET, STRAP MOUNTING HOOK, STRAP HANGING	1 1 2
04	1730785	TUBING, HEADER TANK /RADIATOR	1
05	1001175516	CHECK-VALVE, COOLANT BOTTLE	1

FIGURE 5.0 MAST ASSEMBLY

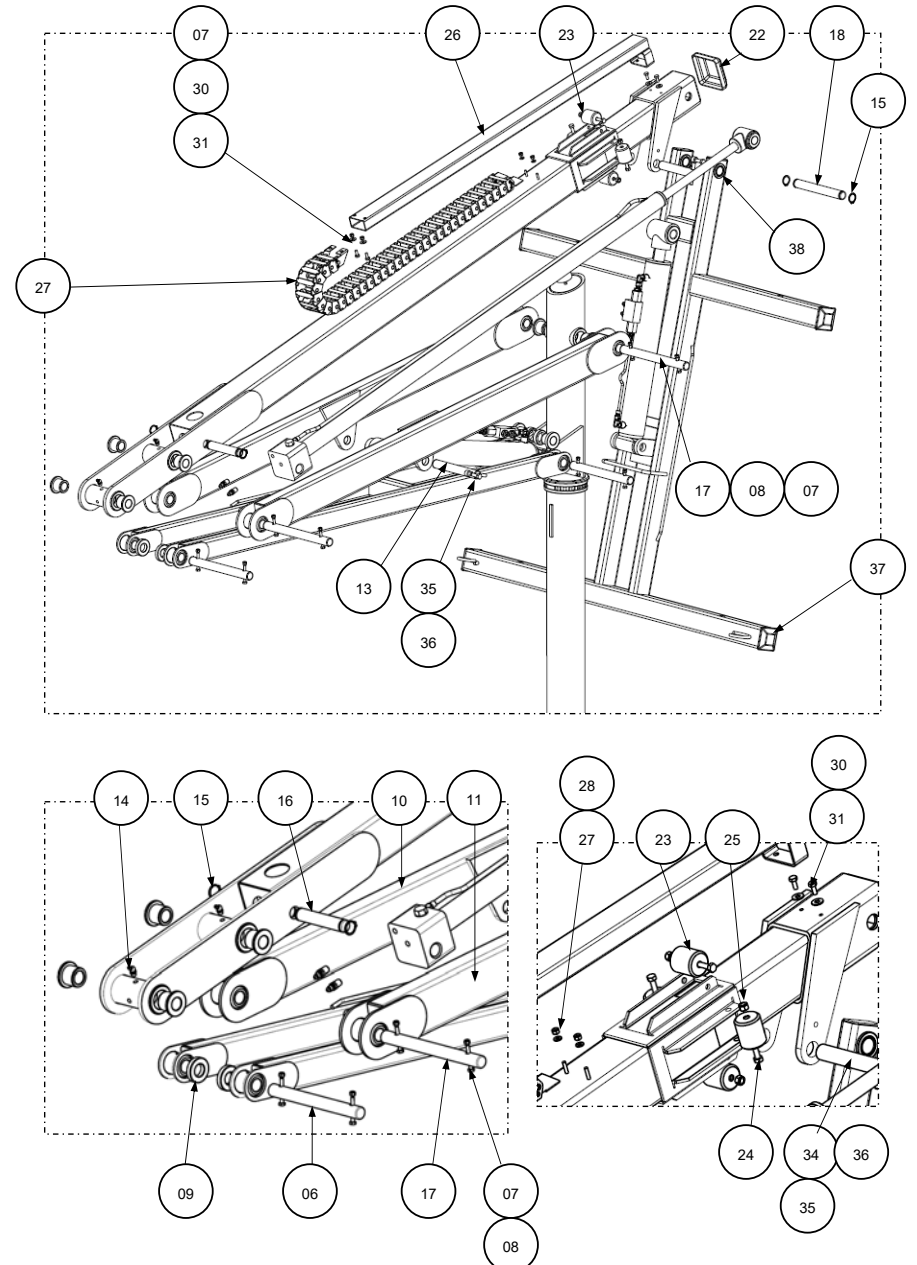
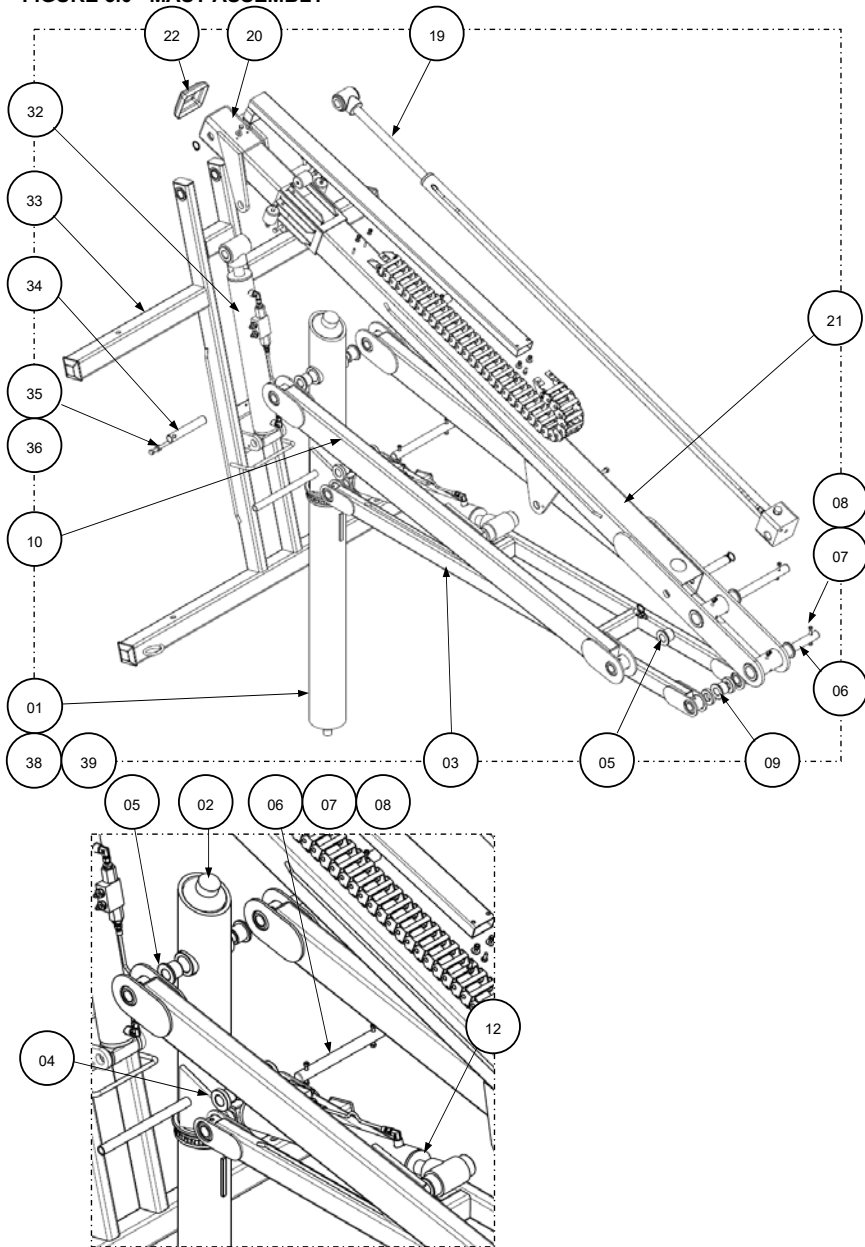
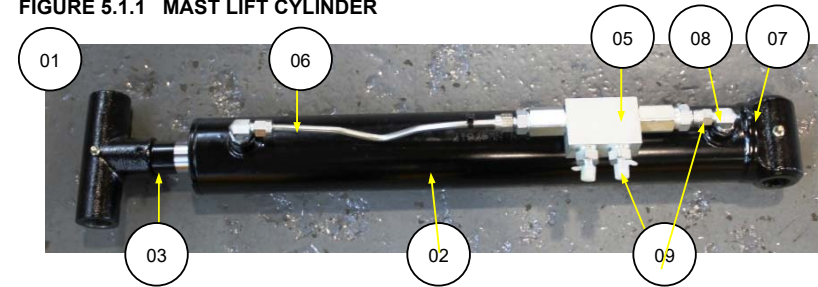


FIGURE 5.0 MAST ASSEMBLY

ITEM	PART NUMBER	DESCRIPTION	QTY
01	1730661	LOWER MAST – INNER (WELDMENT)	1
02	1730778	BUMPER, MAST SUPPORT	1
03	1730515	WELDMENT, OUTER LINK ARMS	1
04	1730513	FLANGED BUSH, ROUND MAST	2
05	1730511	FLANGED BUSH	6
06	1001173772	PIN, OUTER LINK ARM PIVOT	2
07	1734309	HEX NUT, NYLOC 1/4" UNC	10
08	0641416	HEX BOLT, 1/4"-20 UNC 2.0" LONG	6
09	1734299	SPACER, COLLAR	2
10	1730514	ARM, INNER LH LINK	1
11	1734352	ARM, INNER RH LINK	1
12	1733233	HYDRAULIC CYLINDER, MAST LIFT	1
13	1001173774	PIN, MAST LIFT CYLINDER PIVOT	1
14	1731087	GREASE NIPPLE, 45° ANGLE 1/8" NPT	2
15	7011716	CIRCLIP, EXTERNAL 1.0"	4
16	1001173863	PIN, TELE-CYLINDER LOWER PIVOT	2
17	1001173773	PIN, INNER LINK ARM PIVOT	2
18	1001173862	PIN, LIGHT DROOP PIVOT	1
19	1733235	HYDRAULIC CYLINDER, TELE-MAST	1
20	1730517	TELE-MAST, OUTER SQUARE	1
21	1730516	TELE-MAST, INNER SQUARE	1
22	1730814	CAP, INNER SQUARE MAST GALVANISED	1
23	1730710	ROLLER, MAST CARRIER	4
24	0641522	BOLT, HEX HEAD 5/16"-18UNC – 2.75" LONG	4
25	1734471	NYLOC NUT, HEX HEAD 5/16" SAE GRADE 5	4
26	1730589	TUBE, CABLE CARRIER	1
27	1734586	ASSEMBLY, ENERGY CHAIN	1
28	4811700	WASHER, M6 FLAT WASHER	2
29	3290605	NYLOC NUT, HEX M6 x 1.0P	2
30	4751400	FLAT WASHER, 1/4" STEEL	4
31	0641405	SCREW, HEX HEAD 1/4"-20 UNC – 5/8" LONG	4
32	1733234	HYDRAULIC CYLINDER, DROOP TILT	1
33	1001170585P	LIGHTHEAD DROOP	1
	1731306	SLEEVE, PHOSPHUR BRONZE	A/R
34	1001173864	PIN, TILT CYLINDER PIVOT	2
35	3841143	PIN, 3/8" KEEPER	3
36	0641608	SCREW, HEX HEAD 3/8"-16 UNC – 1.0" LONG	3
37	1001176386	CAP, LIGHT BAR END	4
	1001169783	DECAL, 'LED' (NOT SHOWN)	2
	1702009	DECAL, 'JLG' (NOT SHOWN) 3.5" HIGH	3
38	1731306	BUSH, LIGHT DROP MKII	2
39	4740418	WASHER THRUST – MAST BASE (NOT SHOWN)	2
40	3312605	HEX NUT NYLOC 1.0" UNC GRADE 8 (NOT SHOWN)	1

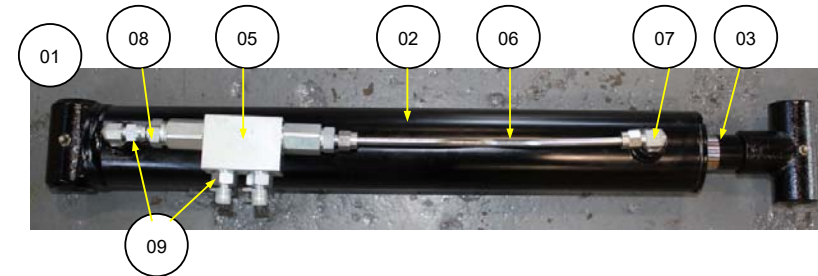
FIGURE 5.1 MAST HYDRAULICS – CYLINDERS/ACTUATORS

FIGURE 5.1.1 MAST LIFT CYLINDER



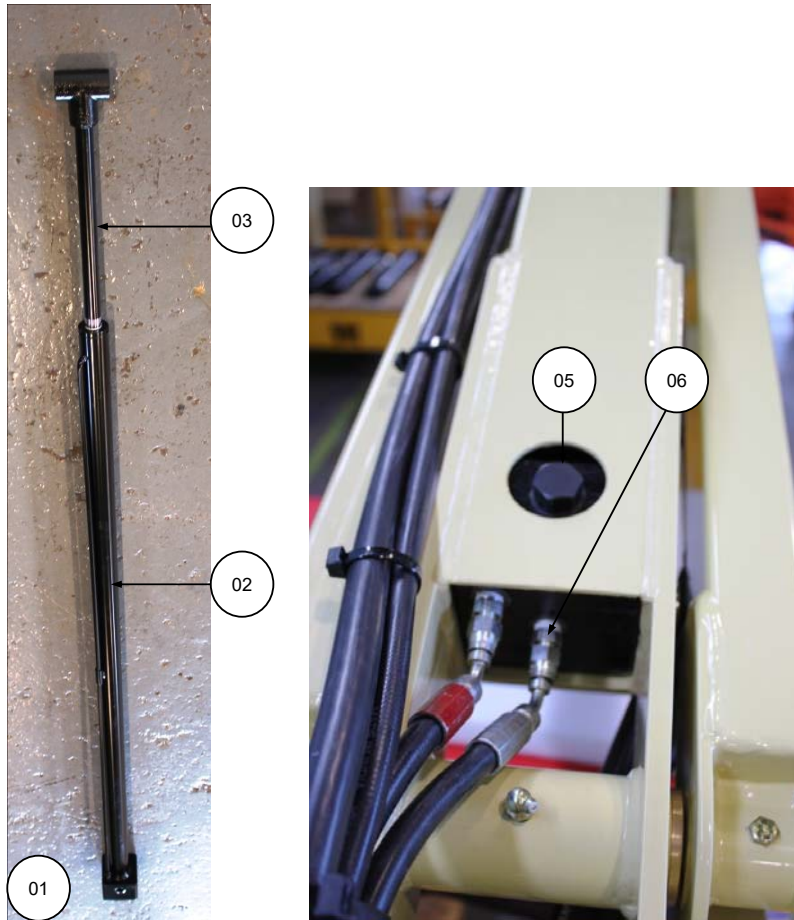
ITEM	PART NUMBER	DESCRIPTION	QTY
01	1733233	HYDRAULIC CYLINDER, MAST LIFT (COMPLETE)	1
02	1734220	BARREL, LIFT CYLINDER	1
03	1734221	ROD, LIFT CYLINDER PISTON	1
04	1731355	SEAL KIT, TILT/LIFT CYLINDER (NOT SHOWN)	1
05	1730634	VALVE, DOUBLE PILOT CHECK	1
06	1734156	TUBING, LIFT CYLINDER HYDRAULIC	1
07	1733343	ELBOW, M/M 1/4"x 7/16"	2
08	1733344	ADAPTOR, STRAIGHT UNION M/F 1/4" x 7/16"	1
09	1734248	NIPPLE, M/M ENCAPSULATED SEAL 1/4" x 7/16"	3

FIGURE 5.1.2 LIGHTHEAD TILT CYLINDER



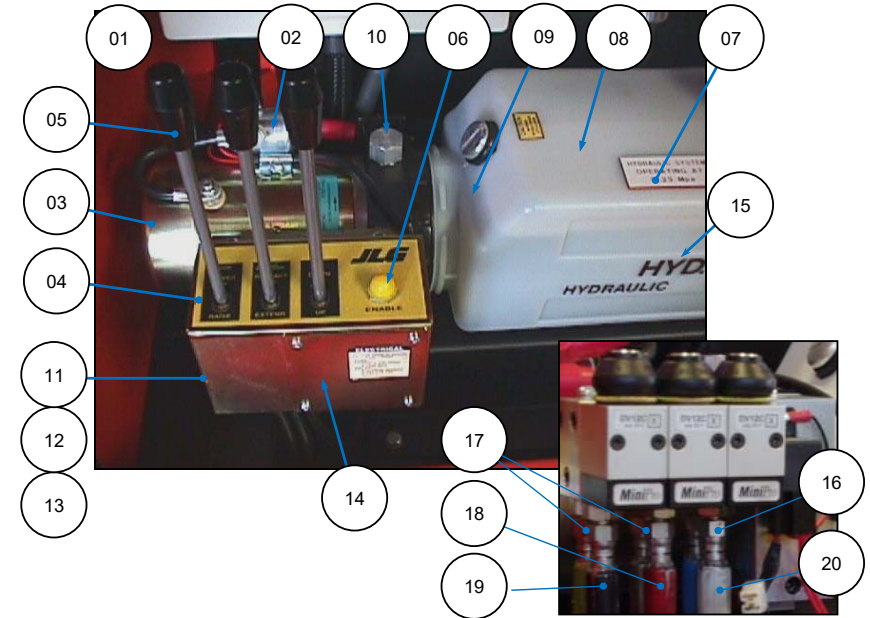
ITEM	PART NUMBER	DESCRIPTION	QTY
01	1733234	HYDRAULIC CYLINDER, DROOP TILT (COMPLETE)	1
02	1734222	BARREL, TILT CYLINDER	1
03	1734223	ROD, TILT CYLINDER PISTON	1
04	1731355	SEAL KIT, TILT/LIFT CYLINDER (NOT SHOWN)	1
05	1730634	VALVE, DOUBLE PILOT CHECK	1
06	1734155	TUBING, LIFT CYLINDER HYRAULIC	1
07	1733343	ELBOW, M/M 1/4"x 7/16"	2
08	1733344	ADAPTOR, STRAIGHT UNION M/F 1/4" x 7/16"	1
09	1734248	NIPPLE, M/M ENCAPSULATED SEAL 1/4" x 7/16"	3

FIGURE 5.1.3 TELE-MAST HYDRAULIC CYLINDER



ITEM	PART NUMBER	DESCRIPTION	QTY
01	1733235	HYDRAULIC CYLINDER, MAST TELE (COMPLETE)	1
02	1734224	BARREL, TELE CYLINDER	1
03	1734225	ROD, TELE CYLINDER PISTON	1
04	1731356	SEAL KIT, TILT/LIFT CYLINDER (NOT SHOWN)	1
05	4640438	VALVE, CHECK CARTRIDGE	1
06	1733345	NIPPLE, M/M ENCAPSUALTED SEAL 1/4" x 7/16"	3

FIGURE 5.2 MAST HYDRAULICS - POWERPACK & MAST CONTROLS



ITEM	PART NUMBER	QTY	DESCRIPTION
01	1730543	1	POWER PACK COMPLETE FENNER
02	1730549	1	SOLENOID, MOTOR RUN 12V
03	1730583	1	ELECTRIC MOTOR
04	1730726	1	DECAL, 'LIFT - TELE - TILT'
05	1730548	3	CONTROL LEVER WITH KNOB
06	4360387	1	PUSHBUTTON SWITCH, HYDRAULIC SYSTEM ENABLE
07	1001171972	1	DECAL, 'HYDRAULIC SYSTEM PRESSURE 19.25 MPa'
08	1730854	1	RESERVOIR, HYDRAULIC FLUID
09	1730855	1	CAP, FILLER/BREATHER
10	1730856	1	KIT, RELIEF VALVE (C/W RELIEF VALVE, LOAD CHECK + PLUG)
11	1730857	3	ACTUATOR ASSEMBLY C/W LEVER BLOCK, BOOT,SPRING MECHANISM, SWITCH AND SPOOL
12	1730858	3	KIT. BOOT C/W BOOT, GLAND + SPRING
13	1730859	3	KIT, LEVER ACTUATOR SWITCH C/W SWITCH, MOUNT PLATE AND FASTENERS
14	1730860	1	COVER, METAL VALVE BLOCK
15	1700419	1	DECAL, 'HYDRAULIC FLUID'
16	1734248	2	NIPPLE, M/M 1/4 x 7/16 C/W ENCAPSULATED SEAL
17	1734249	4	NIPPLE, M/M 1/4 x 7/16 C/W ENCAPSULATED SEAL + ORIFICE
18	1733346	2	HOSE ASSEMBLY, MAST LIFT CYLINDER (GREEN)
19	1733348	2	HOSE ASSEMBLY, TELESCOPIC MAST CYLINDER (RED)
20	1733347	2	HOSE ASSEMBLY, LIGHTHEAD TILT CYLINDER (WHITE)

FIGURE 6.0 ELECTRICAL SYSTEM - CONTROL BOX



FIGURE 6.0 ELECTRICAL SYSTEM - CONTROL BOX

ITEM	PART NUMBER	DESCRIPTION	QTY
01A	1730575	CHAIR, CONTROL BOX	1
01B	1731354	PLATE, CONTROL BOX	1
	1001251230	BOX REAR COVER (COMMON TO 01A & 01B)	1
02	1001264843	CONTROL BOX, COMPLETE	1
-	4811400	FLAT WASHER, M5	4
-	3290505	HEX NUT, NYLOC M5	4
02A	1001171137	CONTROLLER, LED-LT GENSET	1
02B	1001175669	ALARM, SOUND BUZZER	1
02C	1732410	GLAND, NYLON 25 mm TERMINAL	2
-	1732433	GLAND, NYLON 20 mm TERMINAL	A/R
02D	4360336	SWITCH, TOGGLE 2-POSITION	1
-	1001171585	RELAY, 30 A 12 V DC SPDT (INSIDE CONTROL BOX)	9
02E	4360070	CIRCUIT BREAKER, 15 A	7
02F	4460464	TERMINAL, DEUTSCH #16/#18 PIN	17
02G	4460470	CONNECTOR, PANEL NUT	1
02H	4460471	TERMINAL, RECEPTACLE LOCK WASHER	1
02I	4460508	TERMINAL, PIN	4
02J	4460613	TERMINAL, 21 PIN SOCKET	1
02K	1001222555	DECAL, CONTROLLER 'POWER-SAVE' MODE	1
03	4460618	PLUG, ANDERSON 'JUMP-START'	1
04	1001172006	LIGHT, CABIN INTERIOR LED	1

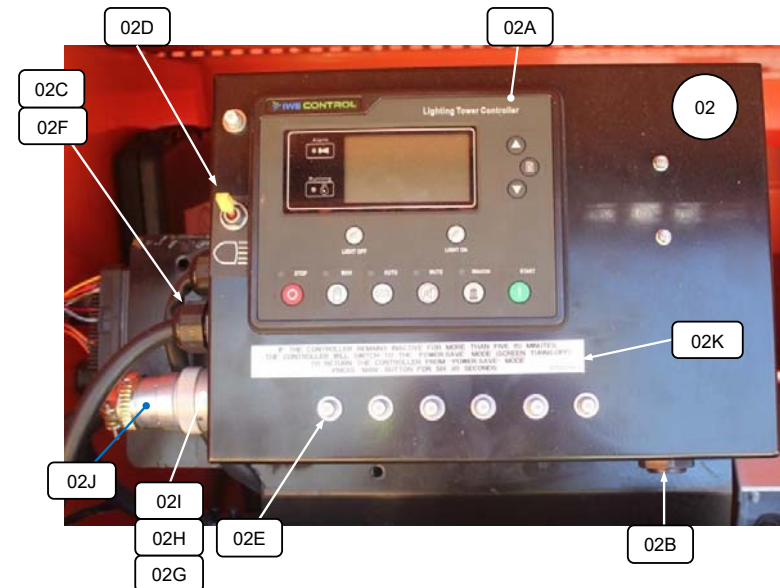
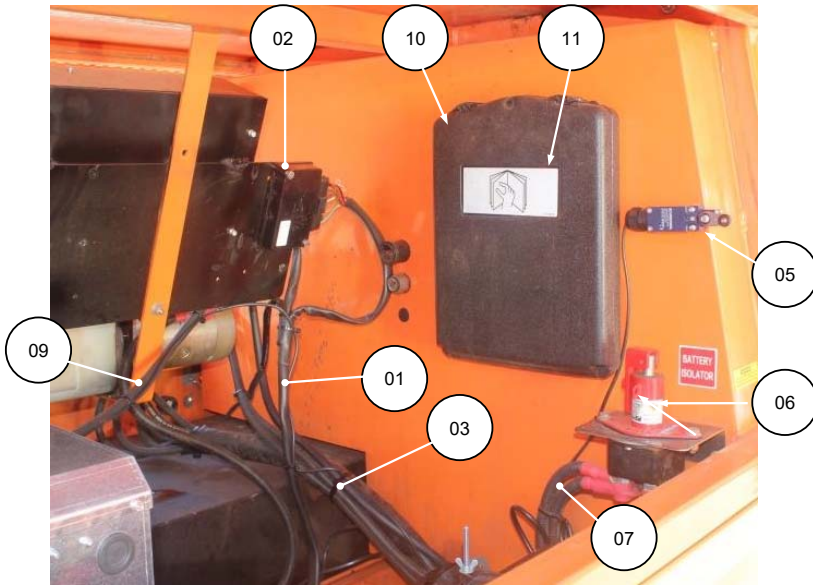


FIGURE 6.1 ELECTRICAL SYSTEM - POWER DISTRIBUTION



ITEM	PART NUMBER	DESCRIPTION	QTY
01	1001256409	HARNESS, Z482E ENGINE WIRING	1
02	1001265719	CONTROL, ECU 1800 RPM Z482EG (LED-6)	
03	1001256966	CABLE, 12 CORE 2.5 mm ² MAST /LIGHTHEAD LOOM	1
04A	1735447	CABLE, BATTERY TO ISOLATOR (RED)	1
04B	1735448	CABLE, ISOLATOR TO FUSE (RED)	1
04C	1735449	CABLE, ISOLATOR TO POWER PACK (RED)	1
04D	1735450	CABLE, FUSE TO STARTER MOTOR (RED)	1
04E	1735451	CABLE, BATTERY TO ISOLATOR (BLACK)	1
04F	1735452	CABLE, ISOLATOR TO MOTOR (BLACK)	1
04G	1735453	CABLE, MOTOR TO FRAME (BLACK)	1
05	43605785	LIMIT SWITCH, ROLLER LEVER ARM	1
06	1730847	SWITCH, DOUBLE POLE BATTERY ISOLATING	1
07	1001183501	HARNESS, BATTERY ISOLATOR	1
08	1001183055	CABLE, STARTER MOTOR TO STARTER ISOLATOR	1
09	1001183052	HARNESS, GENERATOR TO DC BOX	1
10	0860520	BOX, MANUAL STORAGE	1
11	1701509	DECAL, INSTRUCTION MANUALS (PRINTED)	1
12	1731207	BATTERY TRAY, 314 X 185 PVC	1
13	0400003L/T	BATTERY, 12 V 630 CCA	1
14	1001160992	CLAMP, BATTERY HOLD	1
15	1001183056	CABLE, ENGINE TO FRAME EARTH	1

FIGURE 6.2 ELECTRICAL SYSTEM - BATTERY & ISOLATORS

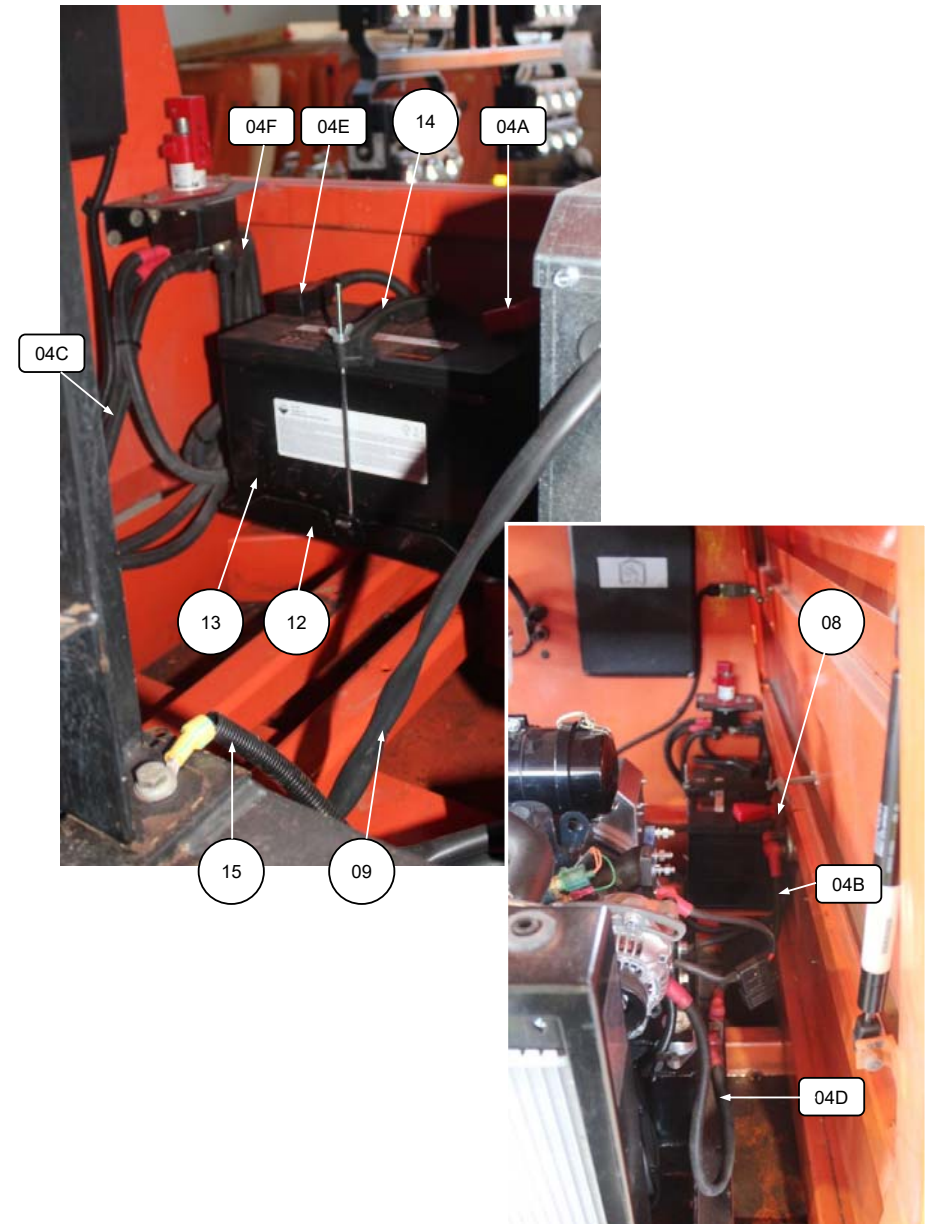
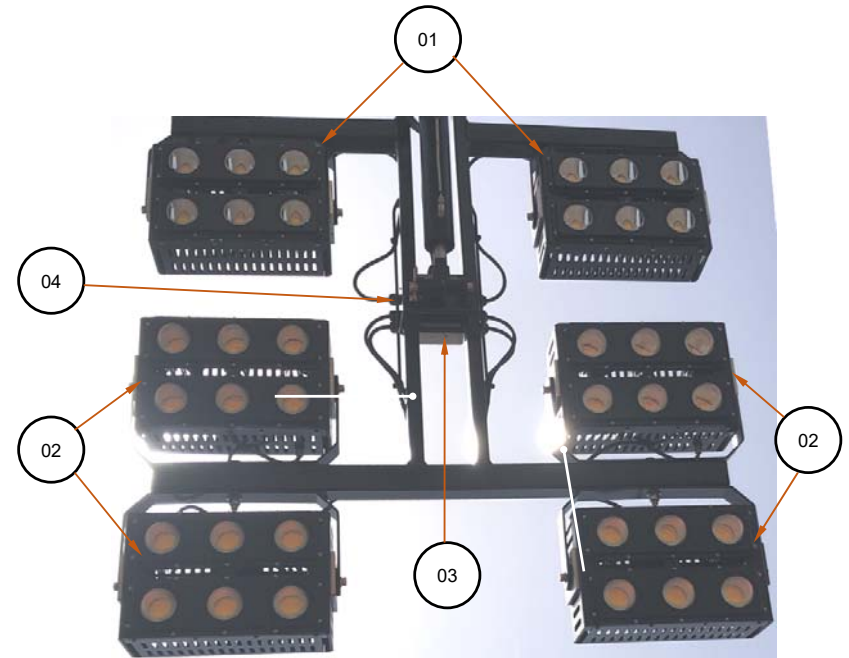


FIGURE 6.2 ELECTRICAL SYSTEM - BATTERY & ISOLATORS



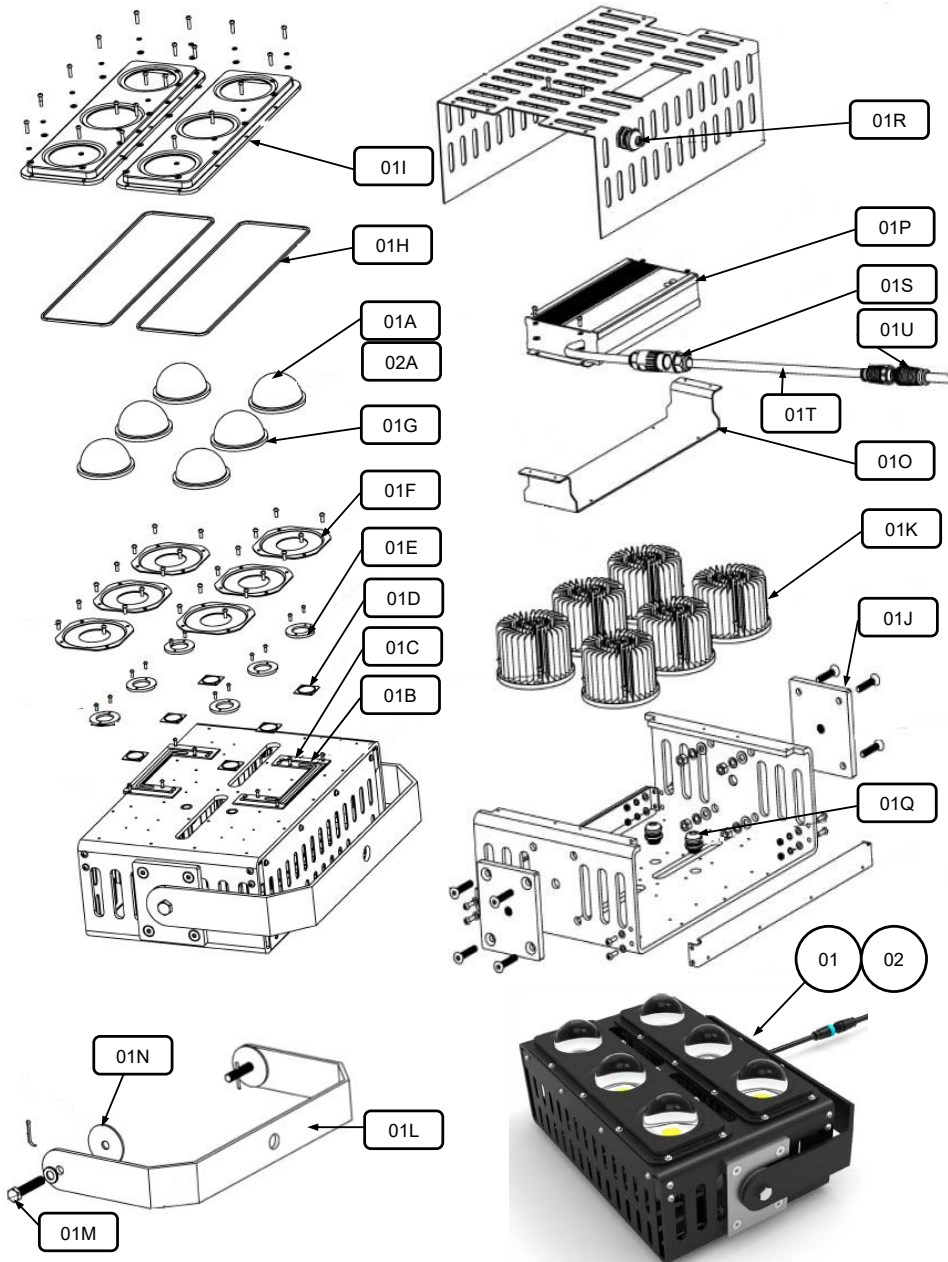
ITEM	PART NUMBER	DESCRIPTION	QTY
16	1733733	STARTER ISOLATOR, COLE HERSEE (1-PHASE)	1

FIGURE 6.3 ELECTRICAL SYSTEM - LIGHTHEAD & LED LIGHTS



LED-6R

FIGURE 6.3 ELECTRICAL SYSTEM - LIGHTHEAD & LED LIGHTS



LED-6R

FIGURE 6.3 ELECTRICAL SYSTEM - LIGHTHEAD & LED LIGHTS

ITEM	PART NUMBER	DESCRIPTION	QTY
01	1001247348	LAMP, PL6F-400W-DC48V 110 DEGREE	2
01A	1001252562	LAMP, LENS 110 DEGREE PL6F 400 W	A/R
01B	1001252544	LAMP, CIRCUIT BOARD PL6F 400 W	A/R
01C	1001252545	LAMP, INSULATOR PL6F 400 W	A/R
01D	1001252546	LAMP, COB LIGHT SOURCE PL6F 400 W	A/R
01E	1001252547	LAMP, LIGHT SOURCE COVER PL6F 400 W	A/R
01F	1001252548	LAMP, LENS PLATE PL6F 400 W	A/R
01G	1001252549	LAMP, LENS SEAL PL6F 400 W	A/R
01H	1001252550	LAMP, LENS PLATE GASKET PL6F 400 W	A/R
01I	1001252551	LAMP, LENS COVER PL6F 400 W	A/R
01J	1001252552	LAMP, TRUNNION SIDE PLATE SS PL6F 400 W	A/R
01K	1001252553	LAMP, HEAT SINK PL6F 400 W	A/R
01L	1001252554	LAMP, TRUNNION BRACKET PL6F 400 W	A/R
01M	1001252555	LAMP, TRUNNION BOLT PL6F 400 W	A/R
01N	1001252556	LAMP, TRUNNION WASHER PL6F 400 W	A/R
01O	1001252557	LAMP, DRIVER MOUNT BKT PL6F 400 W	A/R
01P	1001252558	LAMP, DRIVER PL6F 400 W	A/R
01Q	1001252559	LAMP, M16 METAL CABLE GLAND	A/R
01R	1001252560	LAMP, M20 METAL CABLE GLAND	A/R
01S	1001253965	LAMP, CONNECTOR WP PL6F 400 W	A/R
01T	1001253966	LAMP, 300 MM CABLE WITH PLUG	A/R
01U	1001253967	LAMP, 1800 MM CABLE WITH PLUG	A/R
02	1001247047	LAMP, PL6F-400W-DC48V 60 DEGREE	4
02A	1001252561	LAMP, LENS 60 DEGREE PL6F 400W	A/R
03	1001214304	BOX, ELECTRICAL JUNCTION (BEFORE 08/2020 REFURB)	1
	1001265809	BOX, ELECTRICAL JUNCTION (AFTER 08/2020 REFURB)	1
04	1732433	GLAND, NYLON 20 mm TERMINAL	7