



# Illustrated Parts Manual

***Model***  
***830P***

**SN P130002210  
to Present**

**P/N  
31223078**

**April 1, 2024 - Rev A**

***ANSI***



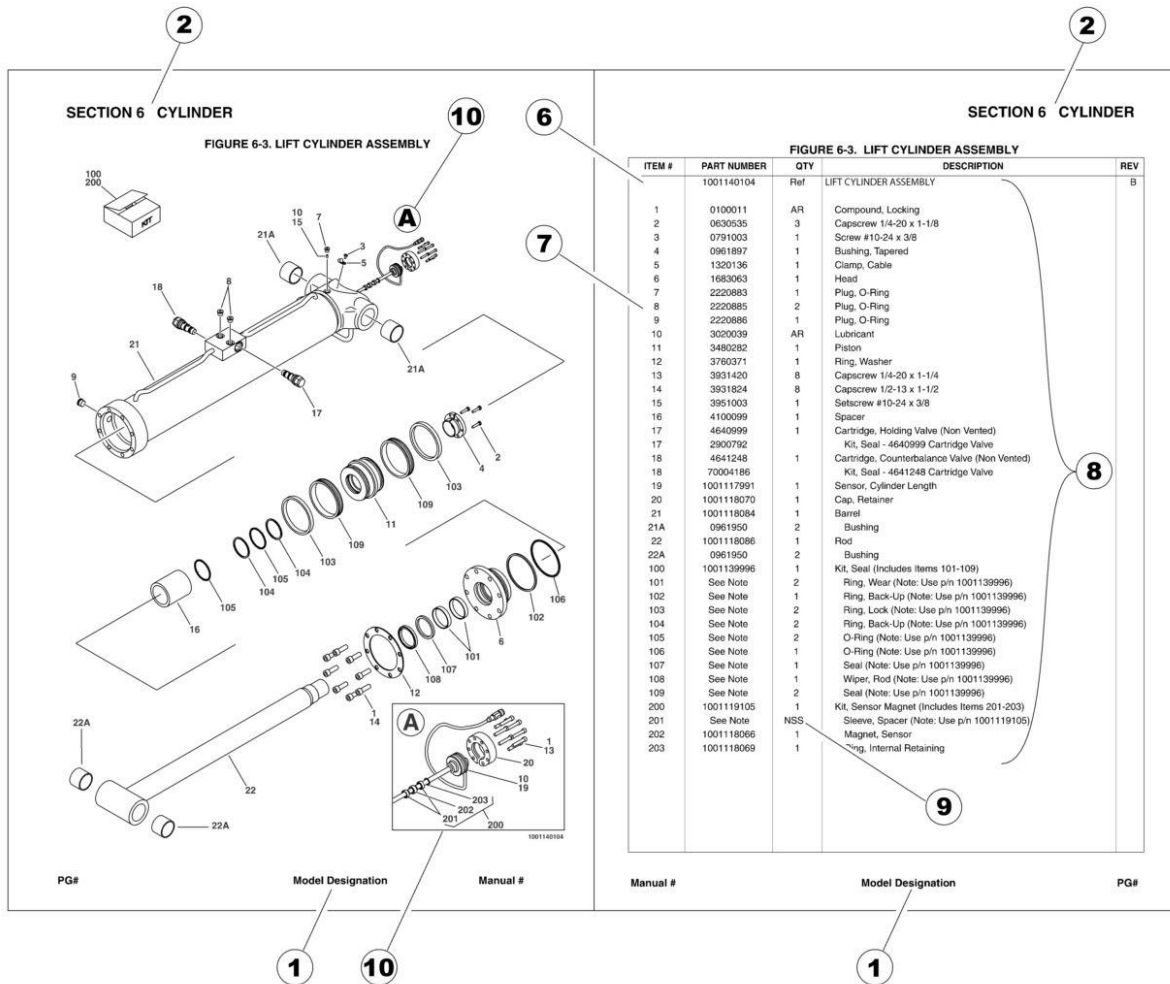
An Oshkosh Corporation Company



# REVISION LOG

April 1, 2024 - A - Original Issue of Manual (Edited to B/M 1001351230 Revision E)

# GENERAL INFORMATION



## 1) MACHINE IDENTIFICATION

Machines are identified by model and in some cases a combination of models, serial number (SN) or regional standard (i.e ANSI, CE, CSA). Components may also be identified by SN or manufacturer. Common components that may be identified by these characteristics are engines and hydraulic components.

## 2) PARTS MANUAL ORGANIZATION

Product information in this manual is organized under section titles. Frame, Cylinder, Hydraulic and Electrical are a few examples. Each section is organized by figure and page number. The information within the Figure is then organized by item number, part number, description and corresponding illustration (s).

## 3) TABLE OF CONTENTS (NOT SHOWN)

A table of contents is found toward the beginning of the manual. Figure number, description and page number are provided for quick reference to the page containing the related information.

## 4) RECOMMENDED SPARE PARTS (NOT SHOWN)

The Recommended Spare Parts List, located near the end of the manual, reference most frequently used maintenance parts.

## 5) PART NUMBER INDEX (NOT SHOWN)

A numerical index listing all part numbers and the corresponding page number(s) appears at the back of the manual.

## GENERAL INFORMATION

### 6) NON-SERVICED PARTS

In some instances, it is necessary to display non-serviced parts, assemblies or installations. In the case of assemblies and installations there will be a Ref in the Qty. column. In case of parts that are not available for service within assemblies or components, there will be a NSS (Not Sold Separately) or NLA (No Longer Available) listed in the Qty. column of the manual.

### 7) PARTS LIST ITEM NUMBERS

Numbers shown in the item# column correspond to numbers used in the associated illustration (s). Item numbers which are missing from the sequence in the parts list are not used on that page.

### 8) INDENTED PARTS DESCRIPTION

An indented part description is included in the item under which it is indented.

### 9) ABBREVIATION AND SYMBOLS

AC.....	Alternating Current	L.....	Liter
ADE.....	Advanced Design Electronics	LB(LBS).....	Pounds
AG.....	Agricultural	LCD.....	Liquid Crystal Display
ANSI.....	American National Standards Institute	LED.....	Light Emitting Diodes
AR.....	As Required	LH.....	Left Hand
ASSY.....	Assembly	LRC.....	Low Rated Countries
AUS.....	Australia	LSS.....	Load Sensing System
AUX.....	Auxiliary	M(m).....	Metric/Meter
AWG.....	American Wire Gauge	MM(mm).....	Milimeter
B/M.....	Bill of Material	mA.....	Miliamps
CAC.....	Charge Air Cooler	NLA.....	No Longer Available
CE.....	European Conformity	NPT.....	National Pipe Threads
CCW.....	Counter Clockwise	NSS.....	Not Sold Separately
CM.....	Centimeter	OD.....	Outside Diameter
CW.....	Clockwise	ORB.....	O-Ring Boss
CSA.....	Canadian Standards Association	ORFS.....	O-Ring Face Seal
CYL.....	Cylinder	OZ (oz).....	Ounces
DIA.....	Diameter	PG.....	Page
DC.....	Direct Current	PN.....	Part Number
DEF.....	Diesel Exhaust Fluid	QT(qt.).....	Quarts
EMS.....	Emergency Stop	QTY.....	Quantity
ENG.....	Engine	REF.....	Reference
FT(ft).....	Feet	REV.....	Revision Level
GA(Ga).....	Gauge	RH.....	Right Hand
HRC.....	High Rated Countries	SAE.....	Society of Automotive Engineers
HVAC.....	Heating, Ventilating, and Air Conditioning	SN.....	Serial Number
HYD.....	Hydraulic	SPEC(S).....	Specifications
Hz.....	Hertz	T/T.....	Turntable
ID.....	Inside Diameter	UGM.....	Universal Ground Module
IN.....	inches	V.....	Volts
ISO.....	International Organization for Standards	W.....	Watts
JIC.....	Joint Industry Council	#.....	Number
KG.....	Kilogram		

### 10) ILLUSTRATION REFERENCE LETTERS

When necessary, illustrations may contain reference letters that are intended to track information (i. e. hoses, harnesses) from one point to another or to track visual enlargement of components to show details that may be located in another area on the illustration.

*Note: Due to continuous product improvements, JLG Industries, Inc. reserves the right to make specification changes without prior notification. Contact JLG Industries, Inc. for updated information.*



# TABLE OF CONTENTS

SECTION 1 - FRAME.....	9
FIGURE 1-1. FRAME INSTALLATION.....	10
FIGURE 1-2. COVERS INSTALLATION.....	12
FIGURE 1-3. WHEEL INSTALLATION.....	14
SECTION 2 - CONTROLS.....	17
FIGURE 2-1. CONTROLS INSTALLATION.....	18
SECTION 3 - MAST.....	21
FIGURE 3-1. MAST INSTALLATION.....	22
FIGURE 3-2. MAST ASSEMBLY - MIDDLE.....	24
FIGURE 3-3. MAST ASSEMBLY - OUTER.....	26
FIGURE 3-4. TRAY INSTALLATION - PLASTIC.....	28
FIGURE 3-5. TRAY INSTALLATION - STOCK PICKING.....	30
SECTION 4 - PLATFORM.....	33
FIGURE 4-1. PLATFORM INSTALLATION.....	34
SECTION 5 - HYDRAULIC.....	37
FIGURE 5-1. HYDRAULIC COMPONENTS INSTALLATION.....	38
FIGURE 5-2. MOTOR/PUMP/TANK ASSEMBLY.....	40
SECTION 6 - ELECTRICAL.....	43
FIGURE 6-1. BATTERY INSTALLATION.....	44
FIGURE 6-2. BATTERY CHARGER INSTALLATION.....	46
SECTION 7 - DECALS.....	49
FIGURE 7-1. DECALS INSTALLATION - ANSI.....	50
SECTION 8 - RECOMMENDED SERVICE PARTS STOCK.....	53
FIGURE 8-1. RECOMMENDED SERVICE PARTS STOCK.....	54
SECTION 9 - SPECIAL OPTIONS/ACCESSORIES/KITS.....	55
FIGURE 9-1. SPECIAL OPTIONS/ACCESSORIES/KITS.....	56
PART NUMBER INDEX.....	57

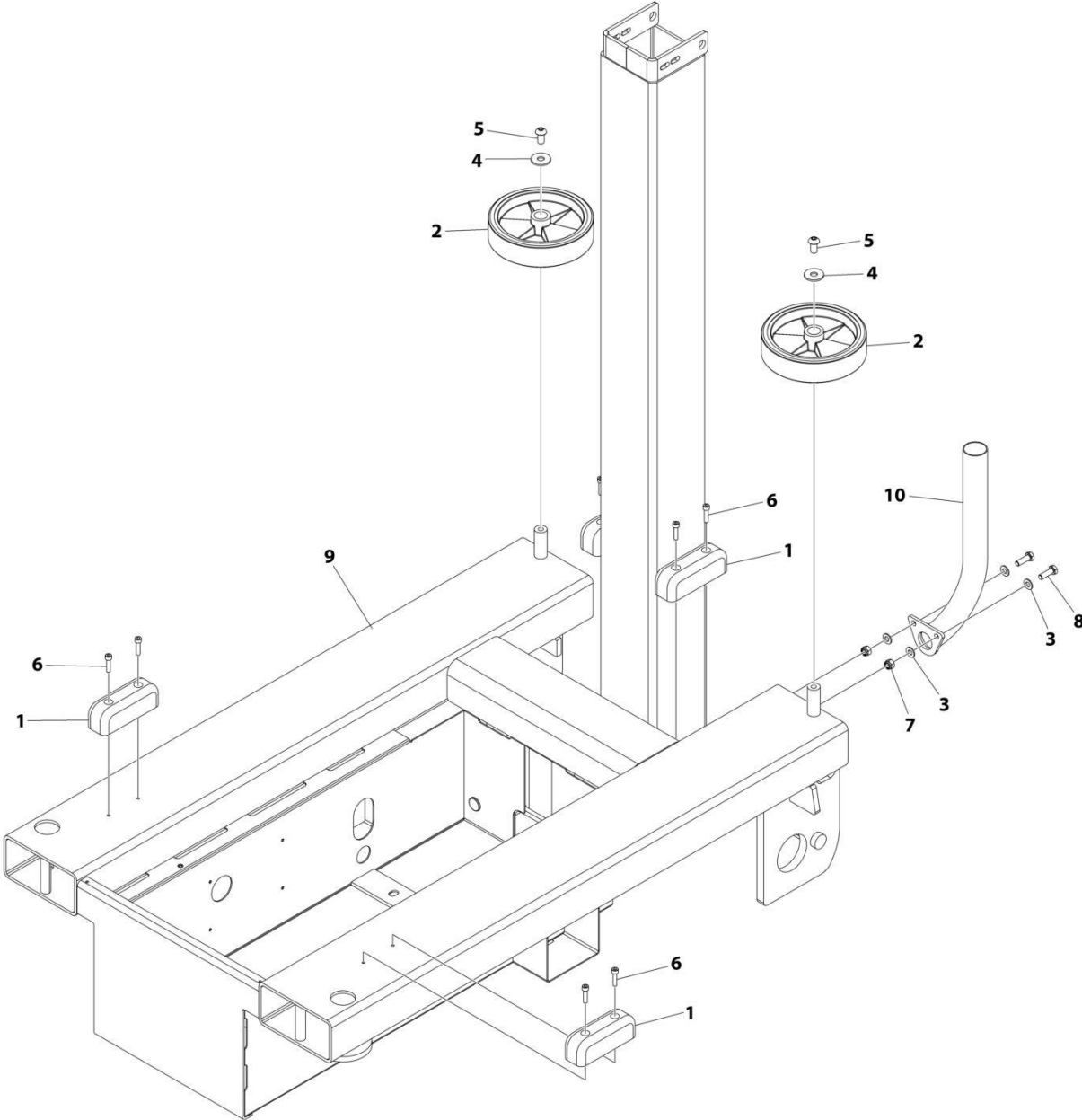




**SECTION 1 - FRAME**

**SECTION 1 - FRAME**

**FIGURE 1-1. FRAME INSTALLATION**



ART\_1001299932

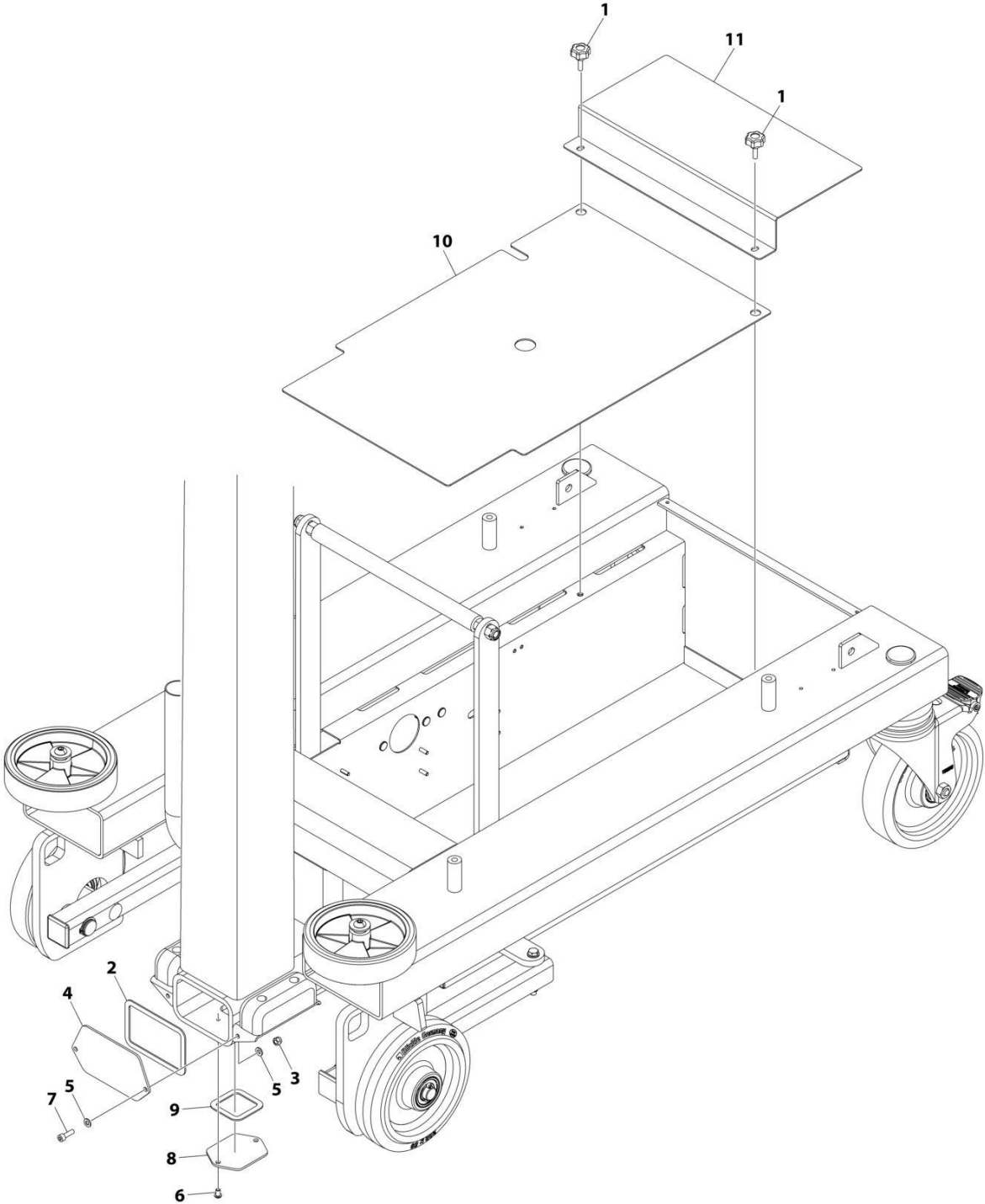
**SECTION 1 - FRAME**

**FIGURE 1-1. FRAME INSTALLATION**

<b>ITEM</b>	<b>PART NUMBER</b>	<b>QTY</b>	<b>DESCRIPTION</b>	<b>REV</b>
	1001299932	Ref	FRAME ASSEMBLY	A
1	PTM126	4	Pad, Rest	
2	PTNM302	2	Wheel, Buffer	
3	1001265113	4	Washer M8	
4	1001265116	2	Washer M10	
5	1001265122	2	Capscrew M10 x 20	
6	1001265128	8	Capscrew M6 x 25	
7	1001265135	2	Nut M8	
8	1001265203	2	Bolt M8 x 25	
9	See Note	NSS	Frame (Note: Not Available for Purchase)	
10	1001302164	1	Tube, Guide	

**SECTION 1 - FRAME**

**FIGURE 1-2. COVERS INSTALLATION**



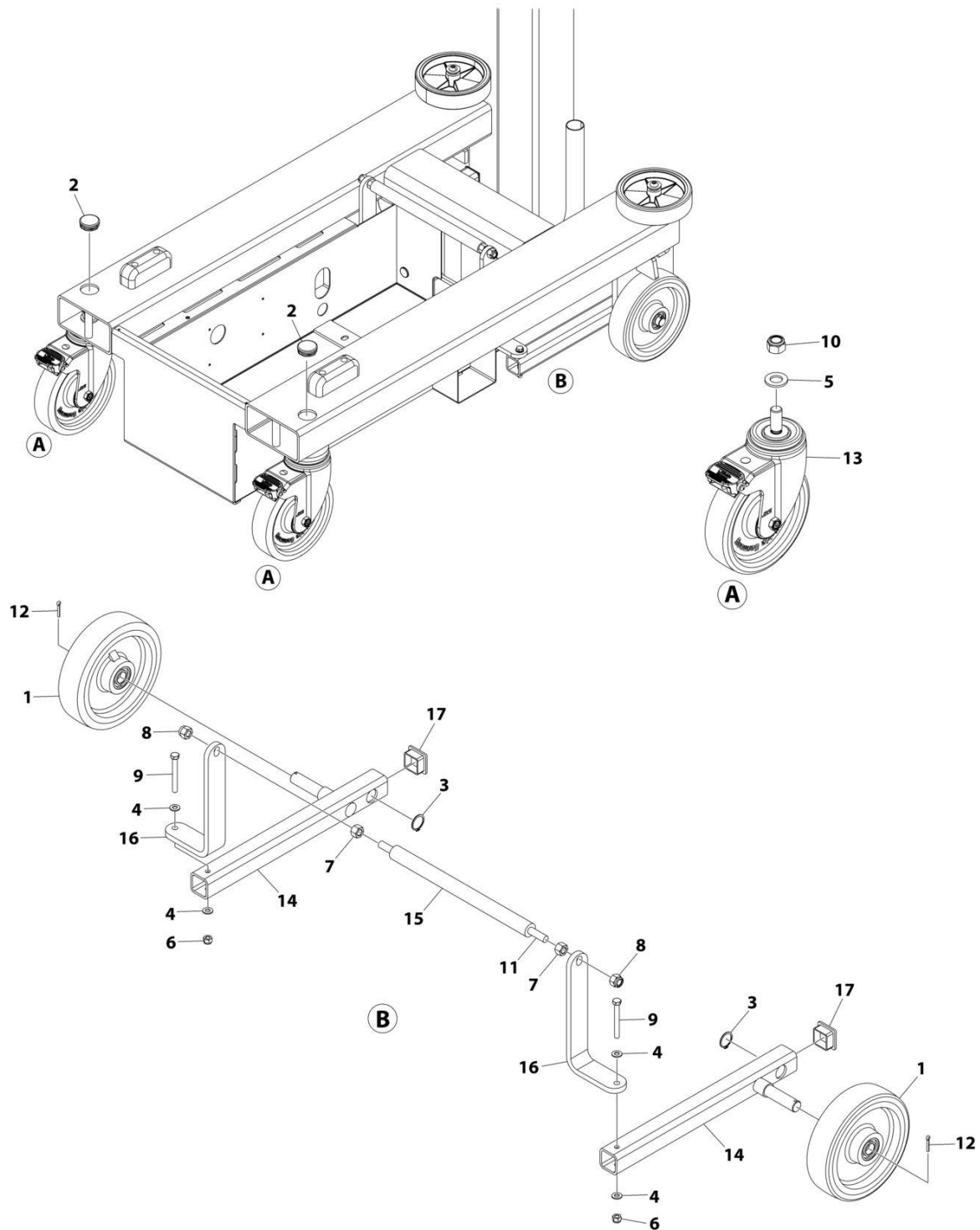
ART\_1001277359

**FIGURE 1-2. COVERS INSTALLATION**

<b>ITEM</b>	<b>PART NUMBER</b>	<b>QTY</b>	<b>DESCRIPTION</b>	<b>REV</b>
	1001277359	Ref	COVERS INSTALLATION	C
1	PTM107	1	Knob	
2	1001302190	1	Gasket, Spine End Cover	
3	1001264557	1	Nut M6	
4	1001302203	1	Cover, Spine End	
5	1001265112	1	Washer M6	
6	1001265119	1	Capscrew M6 x 10	
7	1001265127	1	Capscrew M6 x 20	
8	1001302204	1	Cover, Spine Bottom	
9	1001302210	1	Gasket, Spine Bottom Cover	
10	1001285722	1	Cover, Chassis	
11	1001291148	1	Panel, Chassis Cover	

# SECTION 1 - FRAME

## FIGURE 1-3. WHEEL INSTALLATION



ART\_1001299937

FIGURE 1-3. WHEEL INSTALLATION

ITEM	PART NUMBER	QTY	DESCRIPTION	REV
	1001299937	Ref	WHEEL INSTALLATION	A
1	PTM103	2	Castor - Fixed	
2	PTM163	2	Insert, Chassis	
3	1001265108	2	Circlip	
4	1001265113	4	Washer M8	
5	1001265118	2	Washer 3/4	
6	1001265135	2	Nut M8	
7	1001265137	2	Nut M12	
8	1001265138	2	Nut M12	
9	1001265141	2	Bolt M8 x 70	
10	1001265147	2	Nut 3/4	
11	1001265148	1	Bar, Threaded M12	
12	1001266108	2	Cotterpin	
13	1001277964	2	Castor - Swivel	
14	1001299234	2	Arm, Axle	
15	1001302166	1	Roller, Brake	
16	1001302174	2	Bracket, Autobrake	
17	1001302186	2	Cap, End	

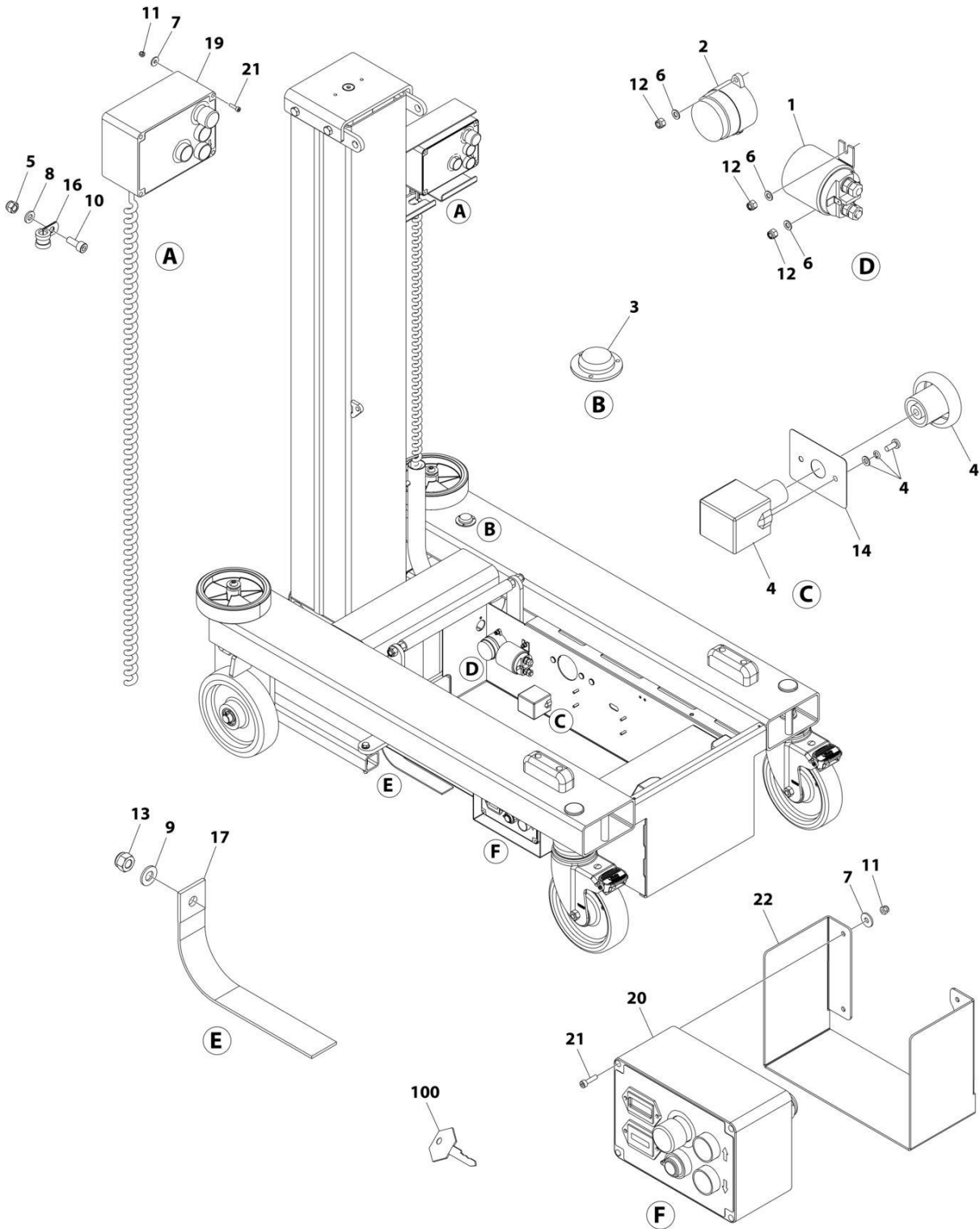




**SECTION 2 - CONTROLS**

# SECTION 2 - CONTROLS

## FIGURE 2-1. CONTROLS INSTALLATION



ART\_1001299938

## SECTION 2 - CONTROLS

### FIGURE 2-1. CONTROLS INSTALLATION

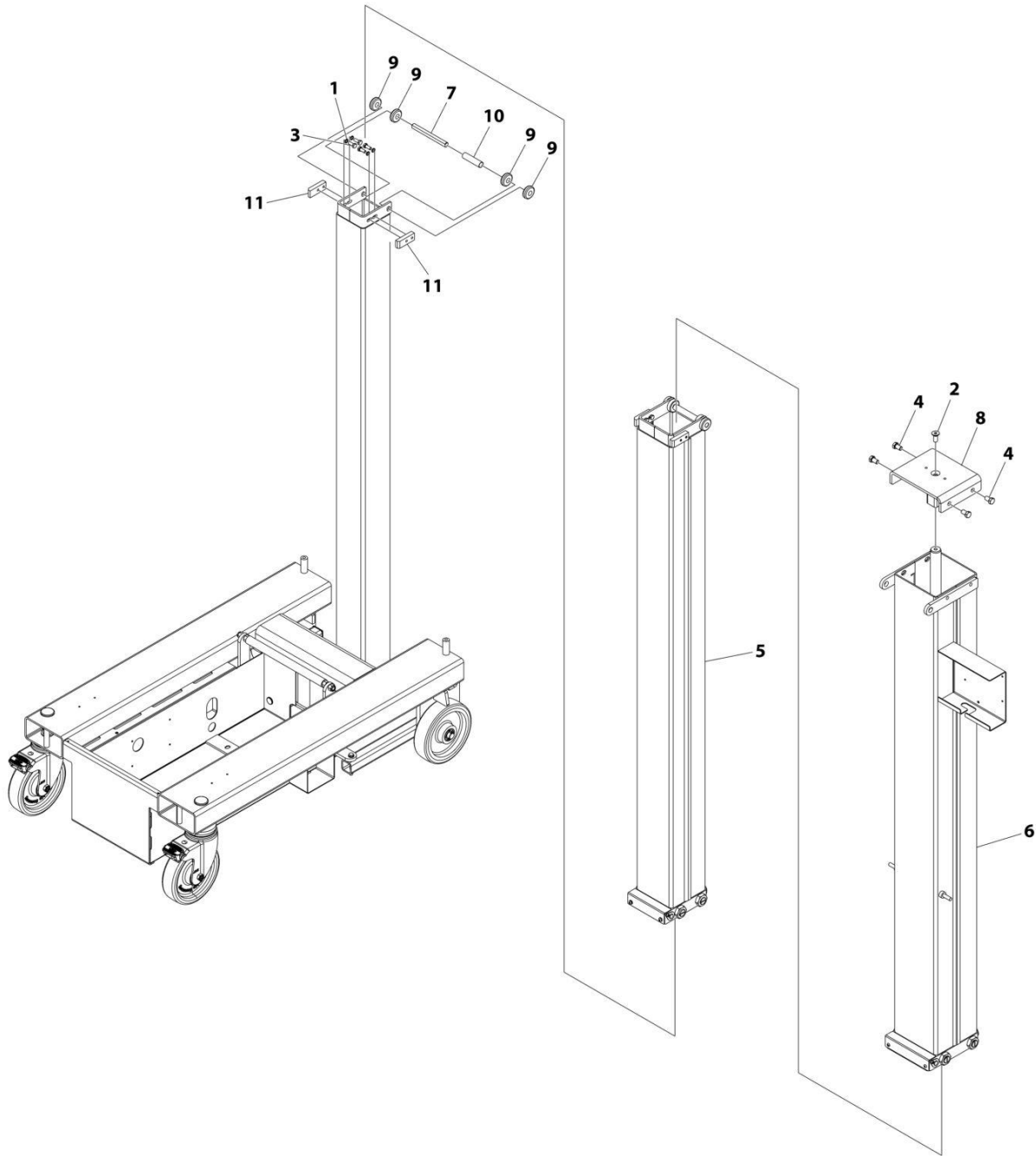
ITEM	PART NUMBER	QTY	DESCRIPTION	REV
	1001299938	Ref	CONTROLS INSTALLATION	A
1	PPE612	1	Relay, Start	
2	PTE215	1	Alarm	
3	PTM106	1	Level	
4	PTNE200	1	Switch, Emergency Stop	
5	1001264557	1	Nut	
6	1001265110	3	Washer M5	
7	1001265111	8	Washer M5	
8	1001265112	1	Washer M6	
9	1001265115	1	Washer M10	
10	1001265126	1	Capscrew M6 x 16	
11	1001265133	8	Nut M4	
12	1001265134	3	Nut M5	
13	1001265136	1	Nut M10	
14	1001265232	1	Decal - Ground Label	
15	1001265521	13	Tie-Strap (Not Shown)	
16	1001265913	1	Clip	
17	1001265952	1	Cable, Ground	
18	1001265956	1	Harness, Chassis (Not Shown)	
18	PTNE208	1	VALVE,SOLENOID 12V	
19	1001265957	1	Controls, Platform	
20	1001265958	1	Controls, Ground	
21	1001265988	8	Cap	
22	1001277657	1	Guard	
23	1001277875	2	Cable, Positive - Isolator to Chassis Mounted Solenoid & Chassis Mounted Solenoid to Powerpack Mounted Solenoid - 230MM (Not Shown)	
24	1001277876	1	Cable, Positive Battery Terminal to Isolator - 910MM (Not Shown)	
25	1001277877	1	Cable, Negative Battery Terminal to Powerpack Stud - 830MM (Not Shown)	
26	1001295213	AR	Tape, Hook	
27	1001295214	AR	Tape, Loop	
100	PTM112	1 pr	Key, Replacement	



**SECTION 3 - MAST**

# SECTION 3 - MAST

## FIGURE 3-1. MAST INSTALLATION



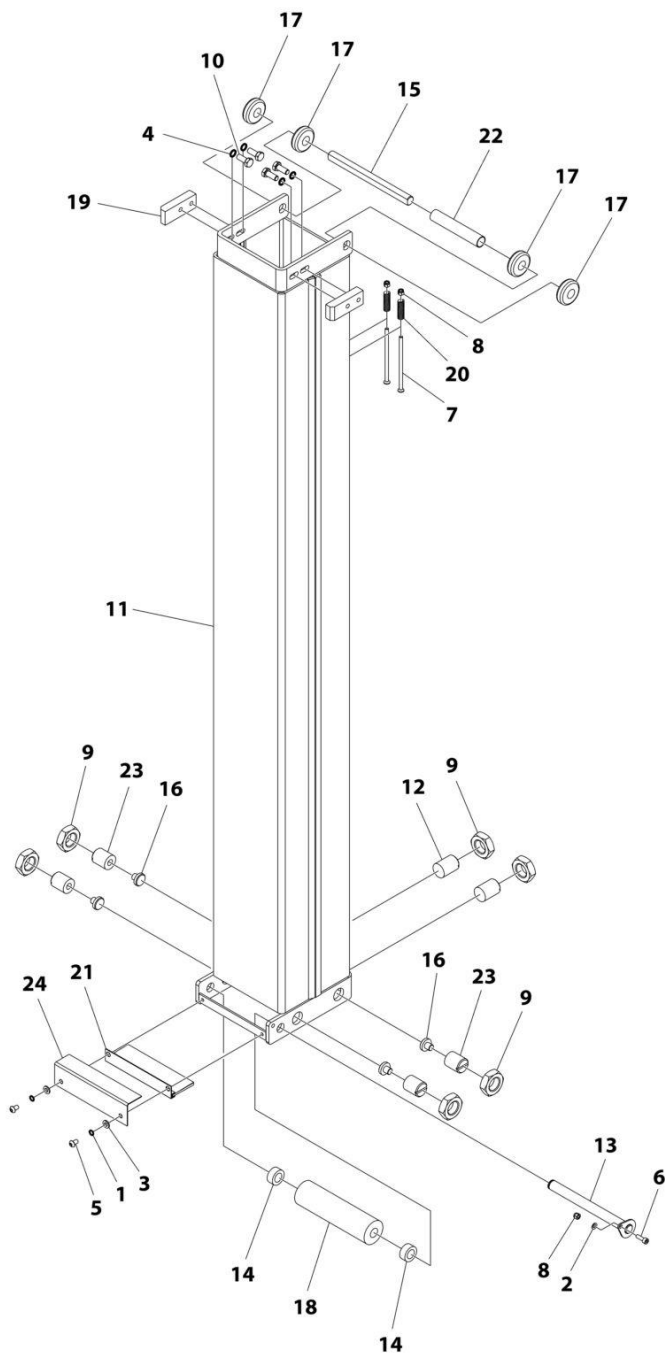
ART\_1001299934

FIGURE 3-1. MAST INSTALLATION

ITEM	PART NUMBER	QTY	DESCRIPTION	REV
	1001299934	Ref	MAST INSTALLATION	A
1	1001265114	4	Washer M8	
2	1001265132	1	Capscrew M12 x 25	
3	1001265202	4	Bolt M8 x 20	
4	1001265205	4	Bolt M12 x 20	
5	1001300943	1	Mast Assembly - Middle (See Separate Breakdown in this Section)	
6	1001300944	1	Mast Assembly - Outer (See Separate Breakdown in this Section)	
7	1001302168	1	Axle	
8	1001302175	1	Cap, Mast	
9	1001302182	4	Roller, Mast	
10	1001302191	1	Spacer	
11	1001302205	2	Pad, Wear	

# SECTION 3 - MAST

## FIGURE 3-2. MAST ASSEMBLY - MIDDLE.



ART\_1001300943



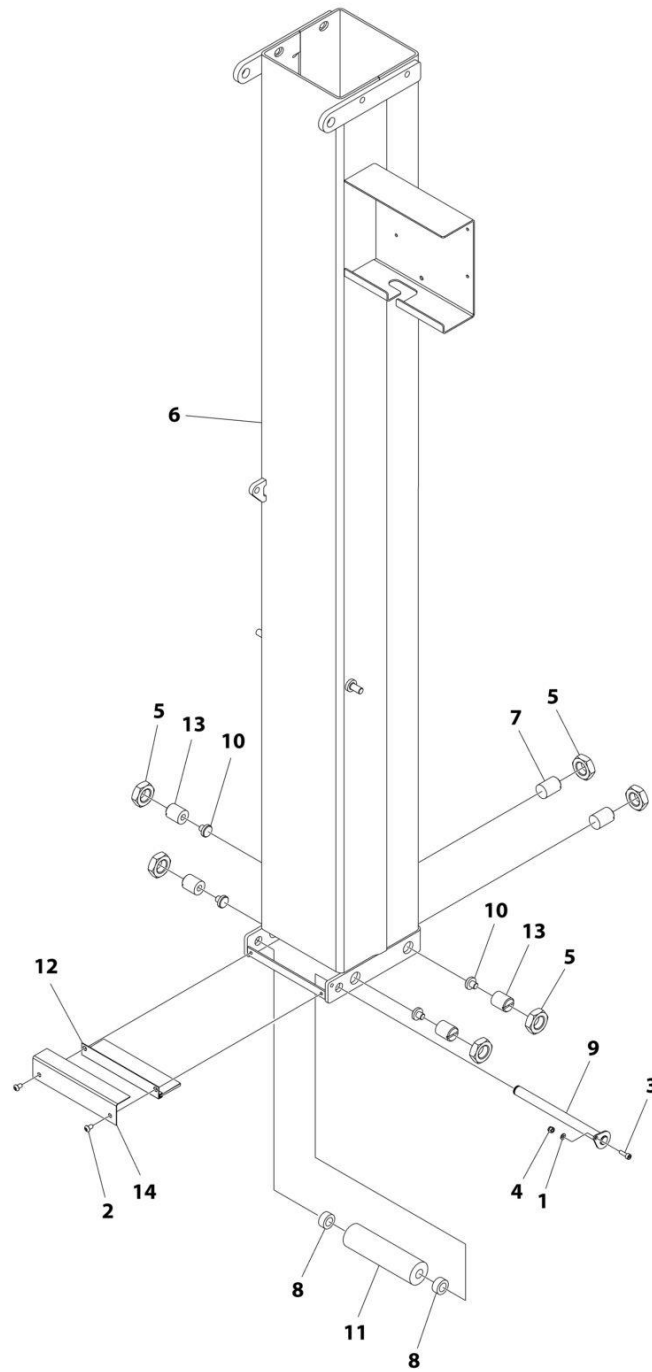
## SECTION 3 - MAST

**FIGURE 3-2. MAST ASSEMBLY - MIDDLE.**

ITEM	PART NUMBER	QTY	DESCRIPTION	REV
	1001300943	Ref	MAST ASSEMBLY - MIDDLE	A
1	1001264555	2	Washer M6	
2	1001265110	1	Washer M5	
3	1001265112	2	Washer M6	
4	1001265114	4	Washer M8	
5	1001265119	2	Capscrew M6 x 10	
6	1001265125	1	Capscrew M5 x 16	
7	1001265130	2	Bolt M5 x 100	
8	1001265134	3	Nut M5	
9	1001265146	6	Nut M24	
10	1001265202	4	Bolt M8 x 20	
11	1001299930	1	Mast, Middle	
12	1001302167	2	Screw, Plastic Wear	
13	1001302169	1	Axle	
14	1001302170	2	Spacer	
15	1001302171	1	Axle	
16	1001302176	4	Insert, Wear Screw	
17	1001302182	4	Roller, Mast	
18	1001302183	1	Roller, Mid Mast	
19	1001302184	2	Pad, Wear	
20	1001302187	2	Spring	
21	1001302188	1	Brush	
22	1001302192	1	Spacer	
23	1001302193	4	Screw, Plastic Wear	
24	1001302200	1	Cover, Roller	

# SECTION 3 - MAST

## FIGURE 3-3. MAST ASSEMBLY - OUTER



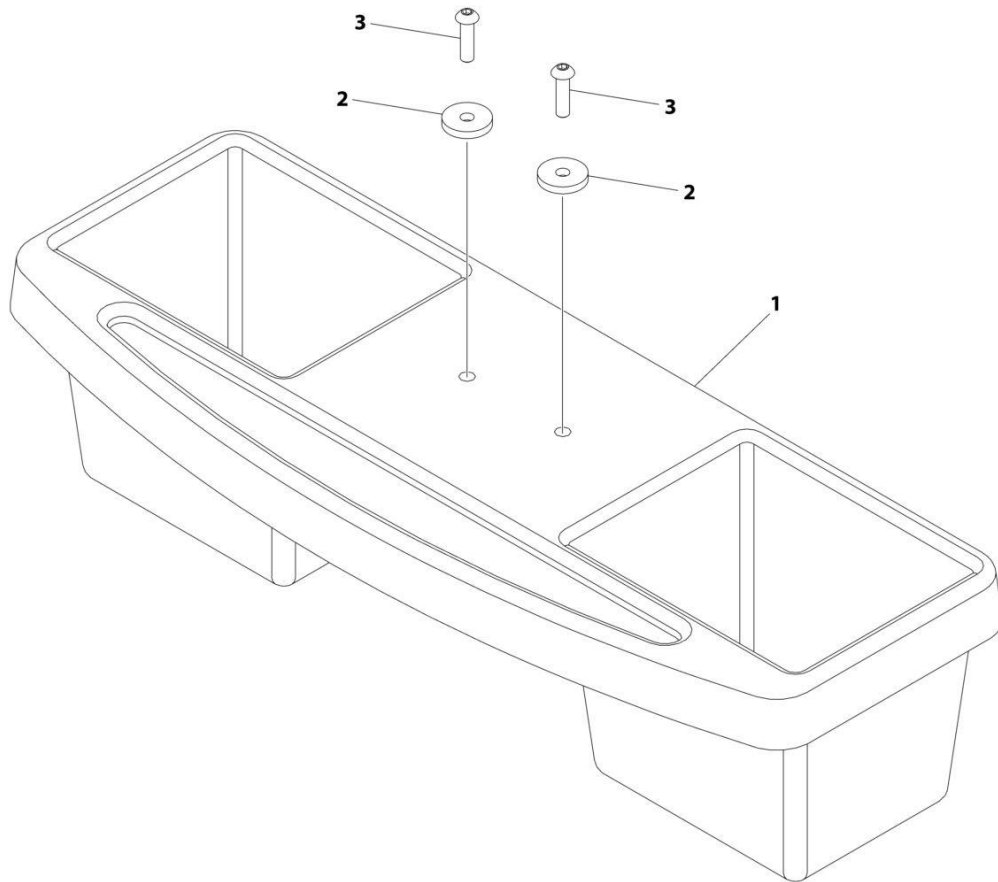
ART\_1001300944

FIGURE 3-3. MAST ASSEMBLY - OUTER

ITEM	PART NUMBER	QTY	DESCRIPTION	REV
	1001300944	Ref	MAST ASSEMBLY - OUTER	A
1	1001265110	1	Washer M5	
2	1001265119	2	Capscrew M6 x 10	
3	1001265125	1	Capscrew M5 x 16	
4	1001265134	1	Nut M5	
5	1001265146	6	Nut M24	
6	1001299929	1	Mast, Outer	
7	1001302167	2	Screw, Plastic Wear	
8	1001302170	2	Spacer	
9	1001302172	1	Axle	
10	1001302176	4	Insert, Wear Screw	
11	1001302185	1	Roller, Outer Mast	
12	1001302189	1	Brush	
13	1001302193	4	Screw, Plastic Wear	
14	1001302199	1	Cover, Roller	

# SECTION 3 - MAST

## FIGURE 3-4. TRAY INSTALLATION - PLASTIC



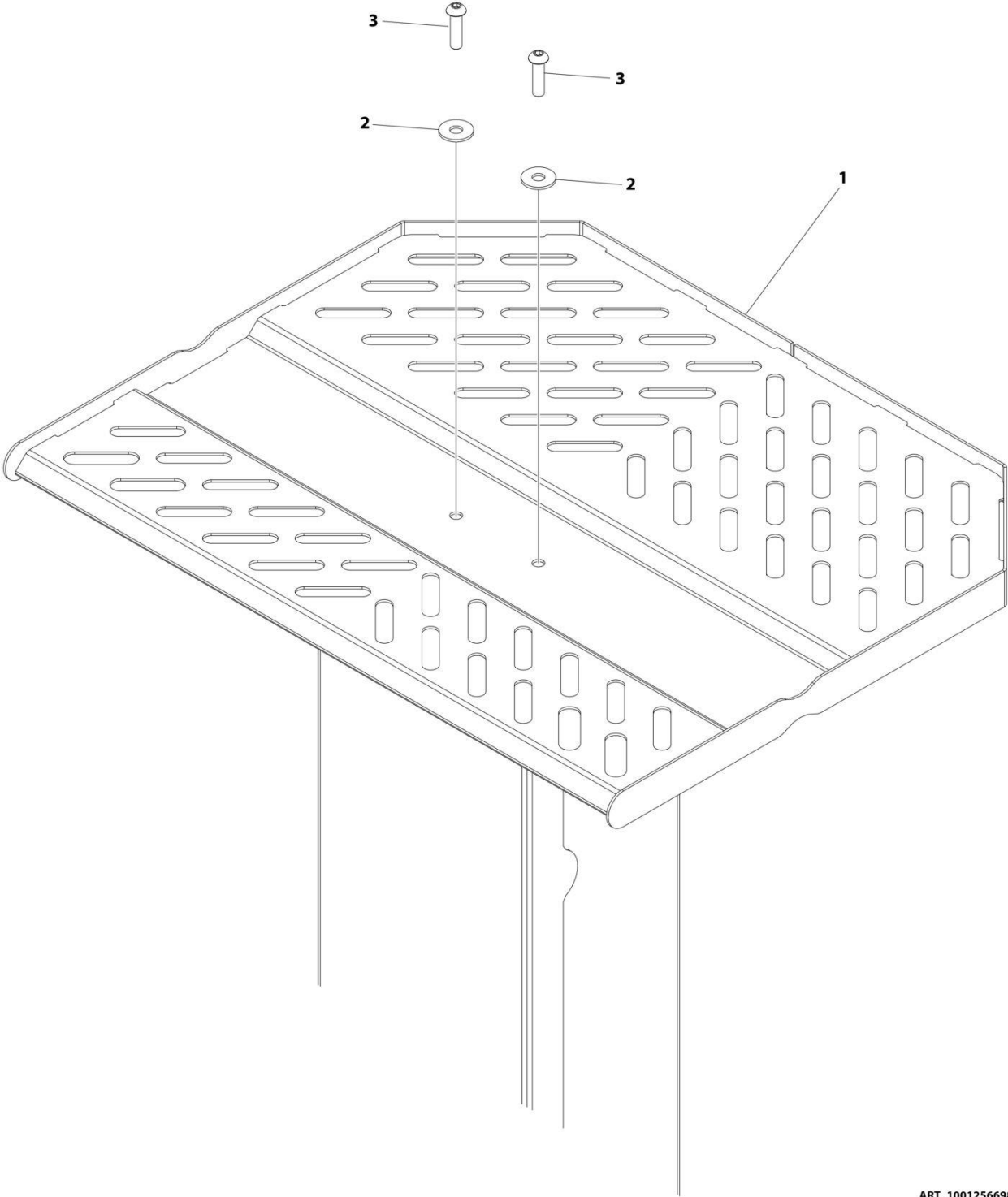
ART\_1001277370

**FIGURE 3-4. TRAY INSTALLATION - PLASTIC**

<b>ITEM</b>	<b>PART NUMBER</b>	<b>QTY</b>	<b>DESCRIPTION</b>	<b>REV</b>
	1001277370	Ref	TRAY INSTALLATION - PLASTIC	B
1	PELM405	1	Tool Tray	
2	1001264558	2	Washer	
3	1001265121	2	Capscrew M8 x 30	

**SECTION 3 - MAST**

**FIGURE 3-5. TRAY INSTALLATION - STOCK PICKING**



ART\_1001256698

**FIGURE 3-5. TRAY INSTALLATION - STOCK PICKING**

<b>ITEM</b>	<b>PART NUMBER</b>	<b>QTY</b>	<b>DESCRIPTION</b>	<b>REV</b>
	1001256698	Ref	TOOL TRAY INSTALLATION	B
1	1001249314	1	Tool Tray	
2	1001264558	2	Washer M8	
3	1001265121	2	Bolt M8 x 30	

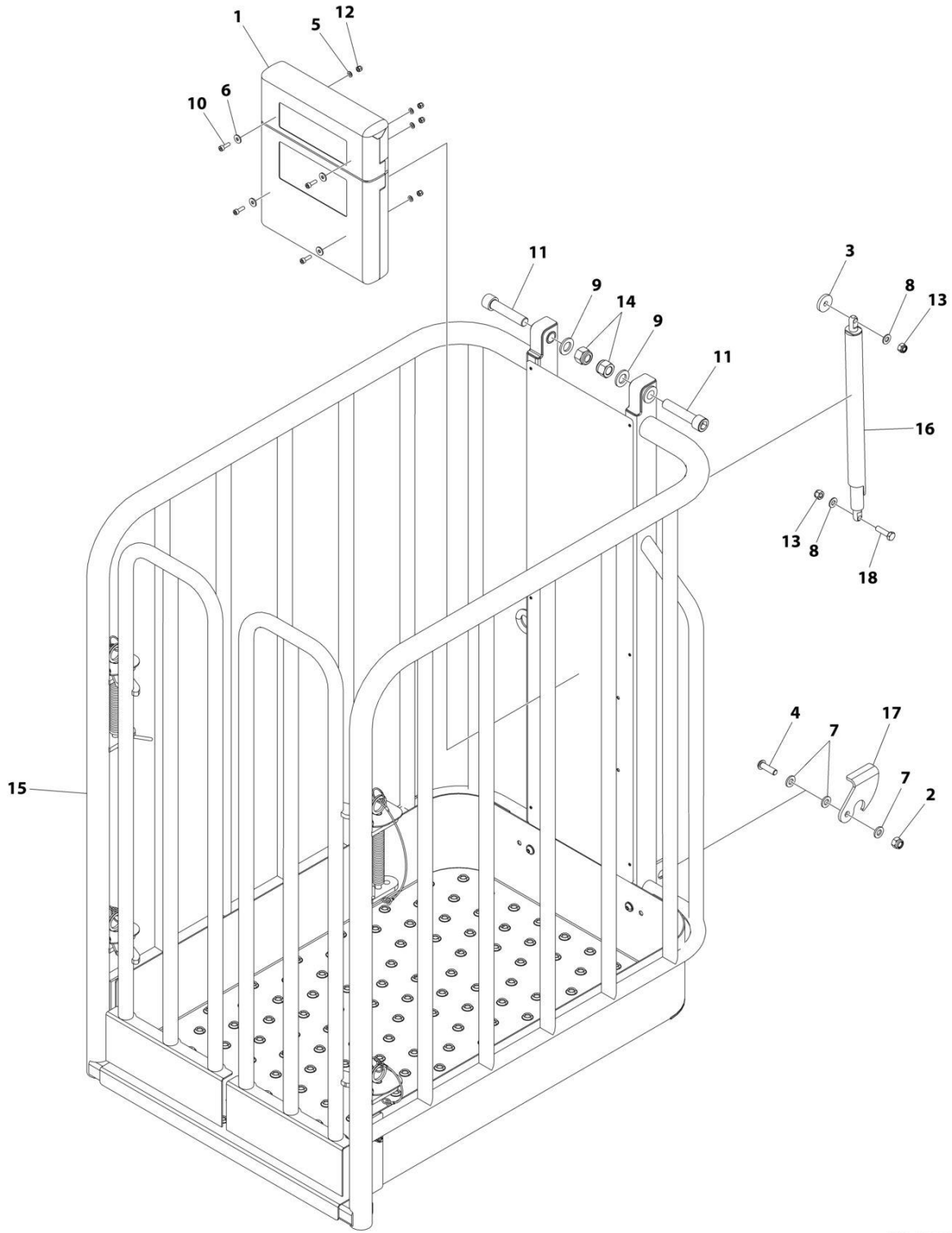




**SECTION 4 - PLATFORM**

# SECTION 4 - PLATFORM

## FIGURE 4-1. PLATFORM INSTALLATION



ART\_1001299935

## SECTION 4 - PLATFORM

### FIGURE 4-1. PLATFORM INSTALLATION

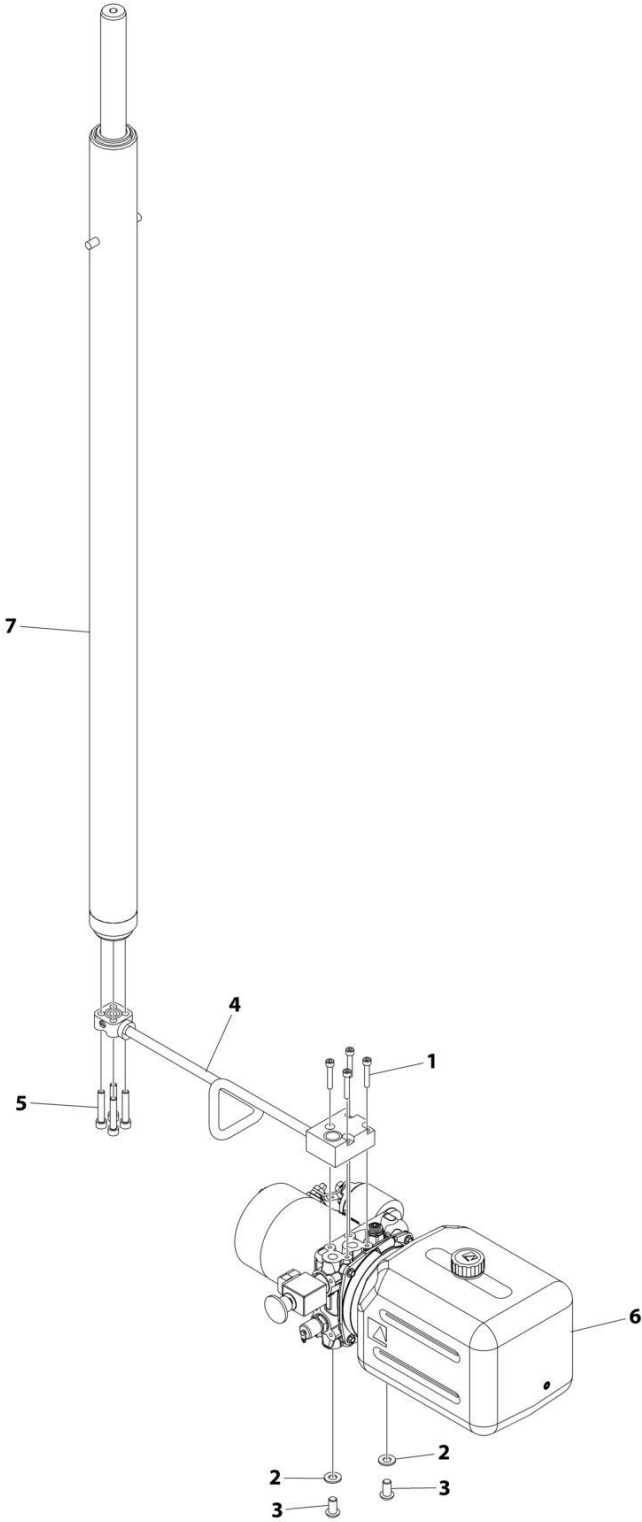
ITEM	PART NUMBER	QTY	DESCRIPTION	REV
	1001299935	Ref	PLATFORM INSTALLATION	B
1	PTNM342	1	Document Holder	
2	1001264557	1	Nut M6	
3	1001264558	1	Washer M8	
4	1001264707	1	Bolt M6 x 20	
5	1001265110	4	Washer M5	
6	1001265111	4	Washer M5	
7	1001265112	3	Washer M6	
8	1001265113	2	Washer M8	
9	1001265117	2	Washer M16	
10	1001265125	4	Capscrew M5 x 16	
11	1001265129	2	Capscrew M16 x 75	
12	1001265134	4	Nut M5	
13	1001265135	2	Nut M8	
14	1001265139	2	Nut M16	
15	1001288897	1	Platform	
16	1001302165	1	Strut	
17	1001302173	1	Latch, Platform	
18	1001265233	1	Bolt M8 x 30	



**SECTION 5 - HYDRAULIC**

**SECTION 5 - HYDRAULIC**

**FIGURE 5-1. HYDRAULIC COMPONENTS INSTALLATION**



ART\_1001299933

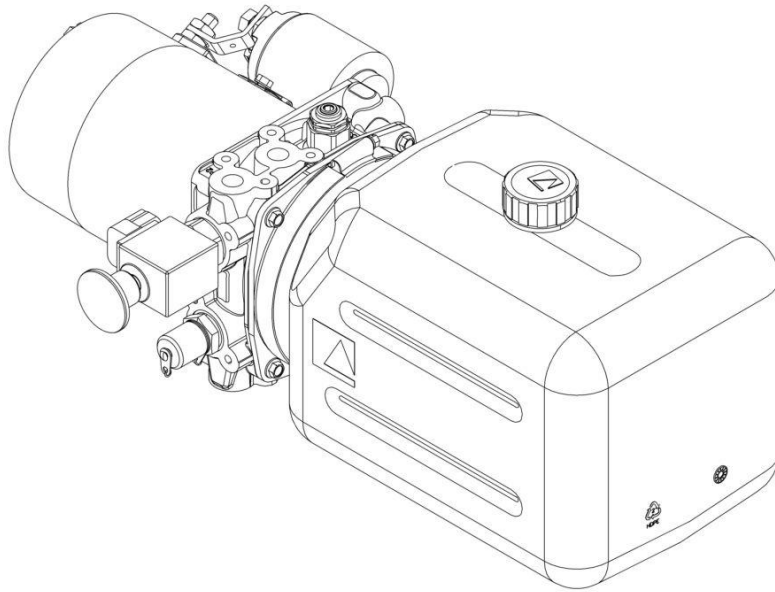
## SECTION 5 - HYDRAULIC

### FIGURE 5-1. HYDRAULIC COMPONENTS INSTALLATION

ITEM	PART NUMBER	QTY	DESCRIPTION	REV
	1001299933	Ref	HYDRAULIC COMPONENTS INSTALLATION	A
1	1001264556	4	Bolt M6 x 35	
2	1001265115	2	Washer M10	
3	1001265122	2	Capscrew M10 x 20	
4	1001265949	1	Pipe, Hydraulic	
5	1001265960	4	Bolt M8 x 45	
6	1001277869	1	Motor/Pump/Tank Assembly (See Separate Breakdown in this Section)	
7	1001300032	1	Cylinder Assembly - Lift	
7	PTNH277	1	KIT,CYLINDER SEAL	

# SECTION 5 - HYDRAULIC

FIGURE 5-2. MOTOR/PUMP/TANK ASSEMBLY



ART\_1001277869



## SECTION 5 - HYDRAULIC

### FIGURE 5-2. MOTOR/PUMP/TANK ASSEMBLY

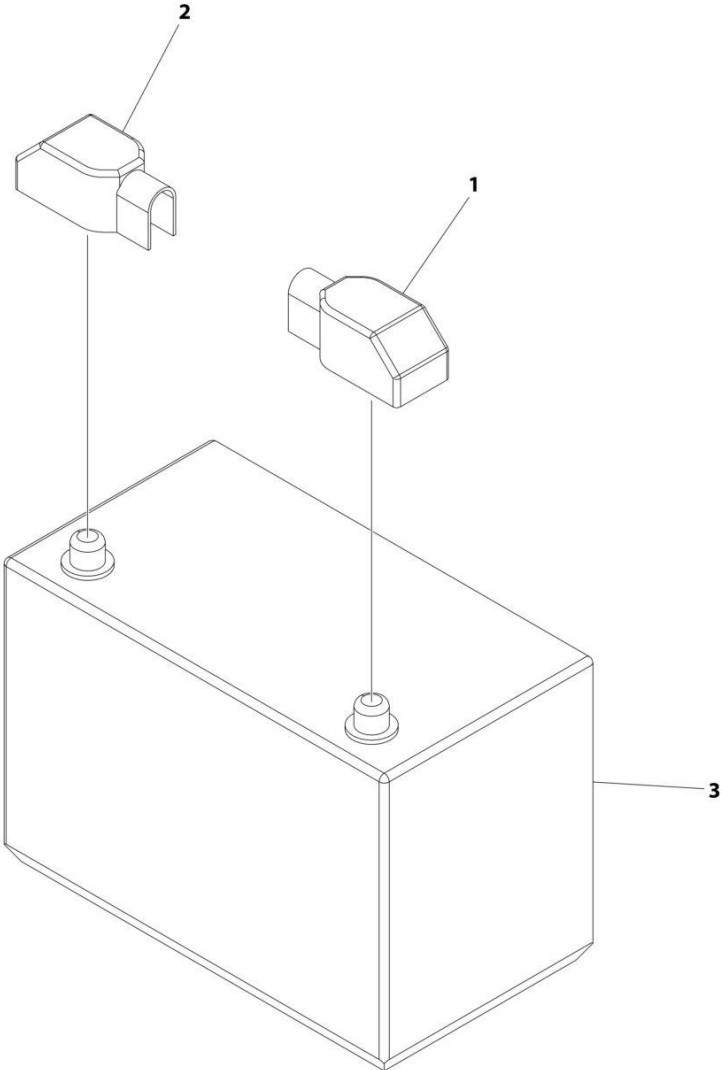
ITEM	PART NUMBER	QTY	DESCRIPTION	REV
	1001277869	Ref	MOTOR/PUMP/TANK ASSEMBLY	B
		Ref	Note: No Other Service Parts Available	
	1001266750	Ref	Solenoid Coil, Powerpack	
	1001266751	Ref	Valve, Powerpack	
	PPE612	Ref	Start Solenoid, Powerpack	



**SECTION 6 - ELECTRICAL**

**SECTION 6 - ELECTRICAL**

**FIGURE 6-1. BATTERY INSTALLATION**



ART\_1001277363

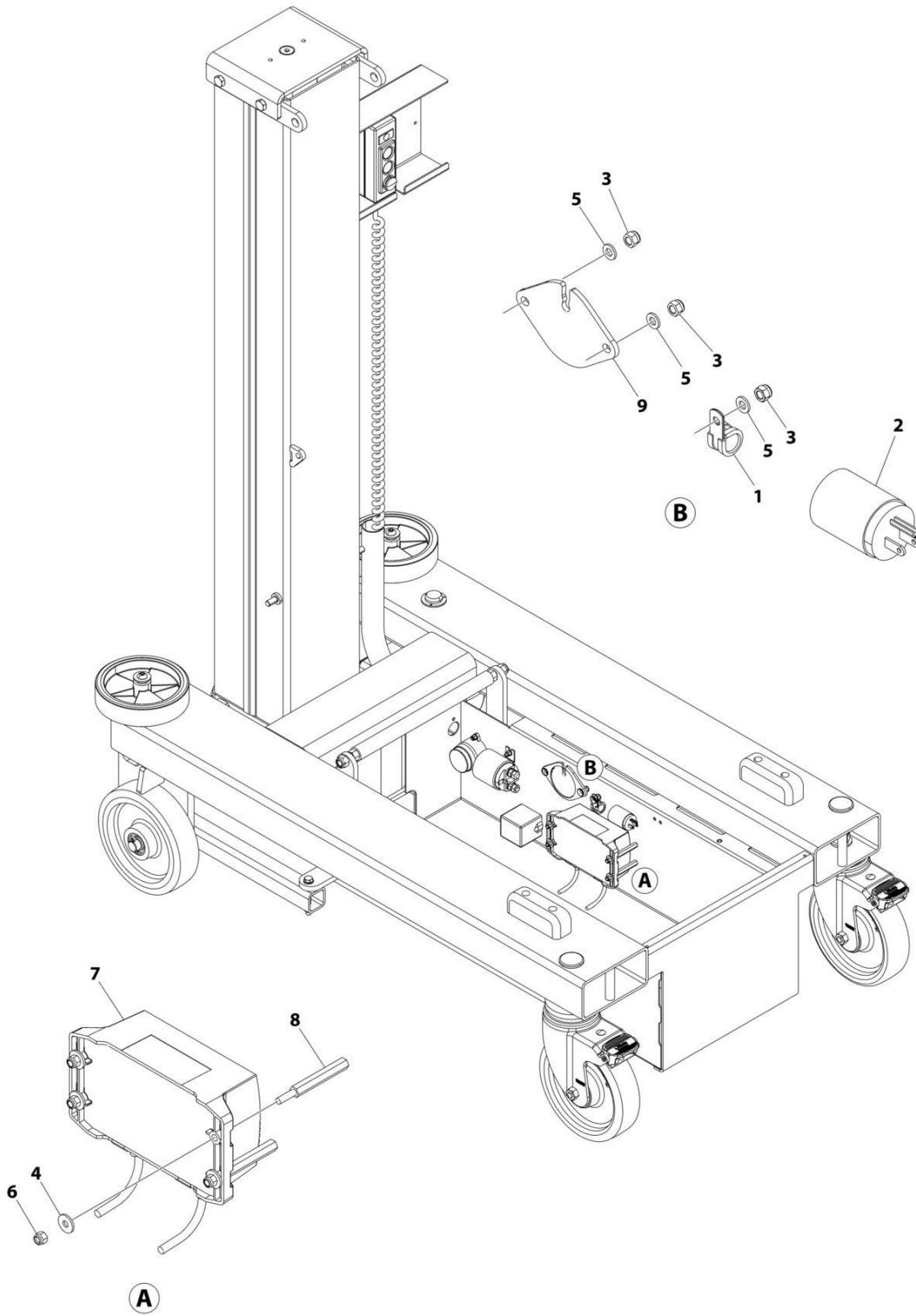
## SECTION 6 - ELECTRICAL

### FIGURE 6-1. BATTERY INSTALLATION

ITEM	PART NUMBER	QTY	DESCRIPTION	REV
	1001277363	Ref	BATTERY INSTALLATION	C
1	PTNE213	1	Cover, Battery Terminal - Blue/Black	
2	PTNE214	1	Cover, Battery Terminal - Red	
3	1001277683	1	Battery - Standard	

# SECTION 6 - ELECTRICAL

## FIGURE 6-2. BATTERY CHARGER INSTALLATION



ART\_1001302083

## SECTION 6 - ELECTRICAL

### FIGURE 6-2. BATTERY CHARGER INSTALLATION

ITEM	PART NUMBER	QTY	DESCRIPTION	REV
	1001302083	Ref	BATTERY CHARGER INSTALLATION	A
1	PTM172	1	Clip	
2	4460138	1	Plug	
3	1001264557	3	Nut	
4	1001265111	4	Washer M5	
5	1001265112	3	Washer M6	
6	1001265134	4	Nut M5	
7	1001276409	1	Charger, Battery	
8	1001299945	4	Stud	
9	1001302206	1	Cover	

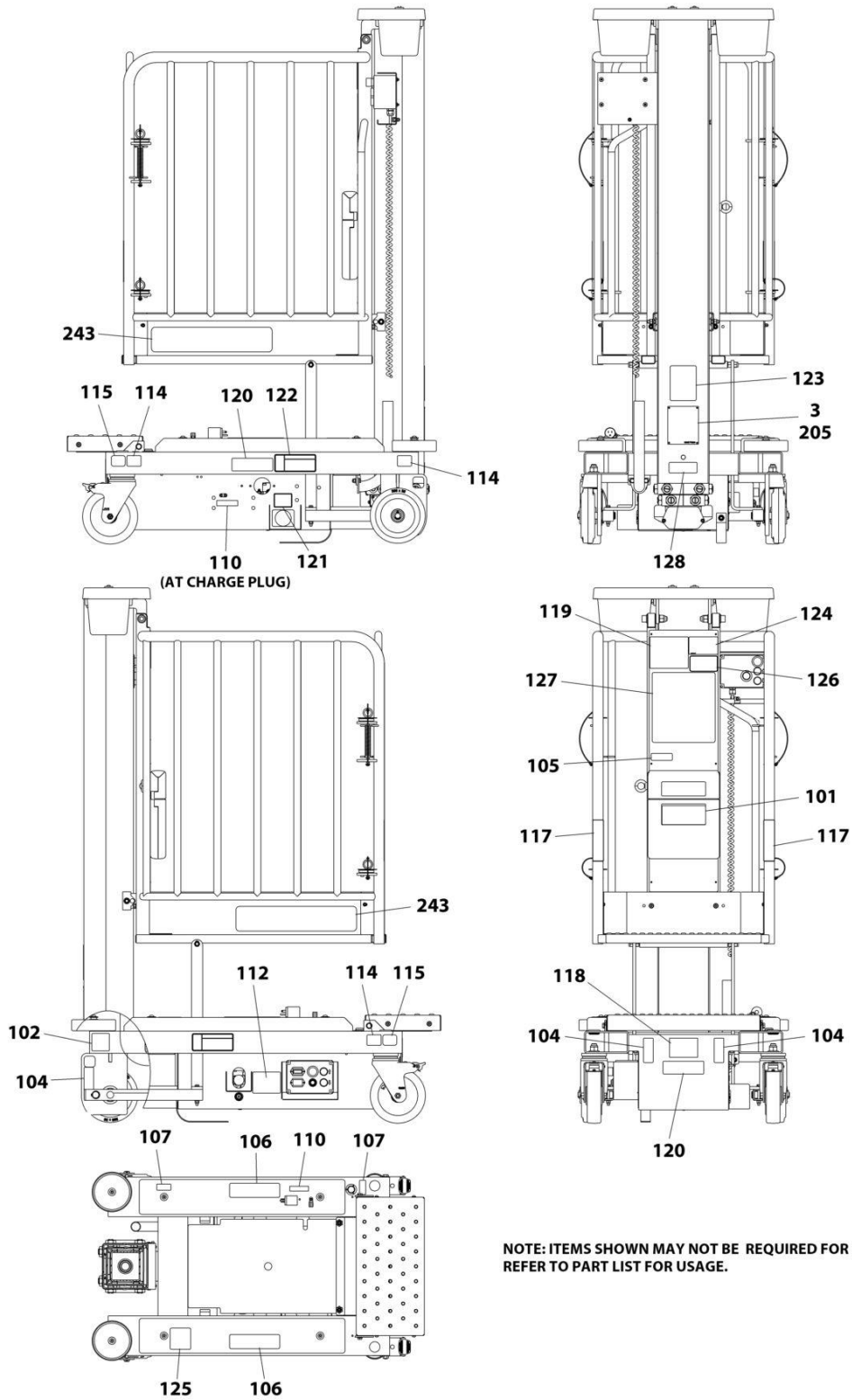




**SECTION 7 - DECALS**

# SECTION 7 - DECALS

## FIGURE 7-1. DECALS INSTALLATION - ANSI



ART\_1001293343

## SECTION 7 - DECALS

**FIGURE 7-1. DECALS INSTALLATION - ANSI**

ITEM	PART NUMBER	QTY	DESCRIPTION	REV
	1001293343	Ref	DECALS INSTALLATION	A
	1001279647	Ref	DECALS CHART	A
3	3820001	4	Rivet	
100	1001293344	Ref	Decal - Kit 830P	A
101	1701509	1	Decal - Manual	
102	1703817	2	Decal - Fork Lift	
104	1001213442	4	Decal - Lifting and Tie Down	
105	1001213582	1	Decal - Lanyard Fall Restraint	
106	1703786	2	Decal - Crushing Hazard	
107	1703789	1	Decal - Level Indicator	
110	3251243	1	Nameplate - 120V/60HZ	
112	1001260980	1	Decal - Emergency Lowering	
114	1001298592	4	Decal - Wheel Load	
115	1001289252	2	Decal - Locking Castor	
117	1001297095	2	Decal - Gate Removal	
118	1702391	1	Decal - Hand Crushing	
119	1703781	1	Decal - Electrical Hazard	
120	1703813	2	Decal - Warning Battery Ventilation	
121	1706740	1	Decal - Battery Disconnect	
122	1706832	2	Decal - Danger Electrocution	
123	1001131270	1	Decal - Patent	
124	1001213488	1	Decal - Capacity	
125	1001223055	1	Decal - Yearly Inspection	
126	1001231801	1	Decal - Warning Prop 65	
127	1001251170	1	Decal - Warning	
205	See Note	NSS	Nameplate - Serial Number (Note: Not Available for Purchase)	
243	1001265941	2	Decal - 830P/JLG	



## **SECTION 8 - RECOMMENDED SERVICE PARTS STOCK**

## **SECTION 8 - RECOMMENDED SERVICE PARTS STOCK**

## SECTION 8 - RECOMMENDED SERVICE PARTS STOCK

FIGURE 8-1. RECOMMENDED SERVICE PARTS STOCK

ITEM	PART NUMBER	QTY	DESCRIPTION	REV
		Ref	<b>Note: The following list will service one machine (built to current production per date on the front cover) with emergency repair parts which can be installed in the field. Parts from the list should be replaced when inventory is depleted to keep service parts stock supplied. For further information, contact your JLG dealer or the JLG Industries Parts Department.</b>	
	PTM112	Ref	Key, Spare	
	PPE612	Ref	RELAY, START SOLENOID PP	
	1001299162	Ref	WHEEL, CASTOR	

**SECTION 9 - SPECIAL OPTIONS/ACCESSORIES/KITS**

**SECTION 9 - SPECIAL OPTIONS/ACCESSORIES/KITS**

## SECTION 9 - SPECIAL OPTIONS/ACCESSORIES/KITS

FIGURE 9-1. SPECIAL OPTIONS/ACCESSORIES/KITS

ITEM	PART NUMBER	QTY	DESCRIPTION	REV
		Ref	Note: This list is to accomodate machines ordered with special equipment. Options may not be applicable to all models. For more specific parts information contact JLG Parts Department.	
	1001256697	Ref	Service Tools/Kits	H
	1001302745	Ref	Static Strap Kit	
	1001288487	Ref	TETHER PLATE ASSEMBLY	



## **SECTION 9 - SPECIAL OPTIONS/ACCESSORIES/KITS**

### **PART NUMBER INDEX**

## SECTION 9 - SPECIAL OPTIONS/ACCESSORIES/KITS

1001131270.....51	1001265136..... 19	1001293343 .....51	1001302191.....23
1001213442.....51	1001265137..... 15	1001293344 .....51	1001302192.....25
1001213488.....51	1001265138..... 15	1001295213 ..... 19	1001302193..... 25, 27
1001213582.....51	1001265139..... 35	1001295214 ..... 19	1001302199.....27
1001223055.....51	1001265141..... 15	1001297095 .....51	1001302200..... 25
1001231801.....51	1001265146..... 25, 27	1001298592 .....51	1001302203..... 13
1001249314.....31	1001265147..... 15	1001299162 .....54	1001302204..... 13
1001251170.....51	1001265148..... 15	1001299234 ..... 15	1001302205.....23
1001256697.....56	1001265202..... 23, 25	1001299929 .....27	1001302206.....47
1001256698.....31	1001265203..... 11	1001299930 .....25	1001302210..... 13
1001260980.....51	1001265205..... 23	1001299932 ..... 11	1001302745.....56
1001264555.....25	1001265232..... 19	1001299933 .....39	1701509.....51
1001264556.....39	1001265233..... 35	1001299934 .....23	1702391.....51
1001264557..... 13, 19, 35, 47	1001265521..... 19	1001299935 .....35	1703781.....51
1001264558.....29, 31, 35	1001265913..... 19	1001299937 .....15	1703786.....51
1001264707.....35	1001265941..... 51	1001299938 .....19	1703789.....51
1001265108..... 15	1001265949..... 39	1001299945 .....47	1703813.....51
1001265110..... 19, 25, 27, 35	1001265952..... 19	1001300032 .....39	1703817.....51
1001265111..... 19, 35, 47	1001265956..... 19	1001300943 ..... 23, 25	1706740.....51
1001265112..... 13, 19, 25, 35, 47	1001265957..... 19	1001300944 ..... 23, 27	1706832.....51
1001265113..... 11, 15, 35	1001265958..... 19	1001302083 .....47	3251243.....51
1001265114.....23, 25	1001265960..... 39	1001302164 ..... 11	3820001.....51
1001265115..... 19, 39	1001265988..... 19	1001302165 .....35	4460138.....47
1001265116..... 11	1001266108..... 15	1001302166 ..... 15	PELM405.....29
1001265117.....35	1001266750..... 41	1001302167 ..... 25, 27	PPE612 ..... 19, 41, 54
1001265118..... 15	1001266751..... 41	1001302168 .....23	PTE215.....19
1001265119..... 13, 25, 27	1001276409..... 47	1001302169 .....25	PTM103.....15
1001265121.....29, 31	1001277359..... 13	1001302170 ..... 25, 27	PTM106.....19
1001265122..... 11, 39	1001277363..... 45	1001302171 .....25	PTM107.....13
1001265125.....25, 27, 35	1001277370..... 29	1001302172 .....27	PTM112..... 19, 54
1001265126..... 19	1001277657..... 19	1001302173 .....35	PTM126.....11
1001265127..... 13	1001277683..... 45	1001302174 ..... 15	PTM163.....15
1001265128..... 11	1001277869..... 39, 41	1001302175 .....23	PTM172.....47
1001265129.....35	1001277875..... 19	1001302176 ..... 25, 27	PTNE200.....19
1001265130.....25	1001277876..... 19	1001302182 ..... 23, 25	PTNE208.....19
1001265132.....23	1001277877..... 19	1001302183 .....25	PTNE213.....45
1001265133..... 19	1001277964..... 15	1001302184 .....25	PTNE214.....45
1001265134..... 19, 25, 27, 35, 47	1001279647..... 51	1001302185 .....27	PTNH277.....39
1001265135..... 11, 15, 35	1001285722..... 13	1001302186 ..... 15	PTNM302.....11
	1001288487..... 56	1001302187 .....25	PTNM342.....35
	1001288897..... 35	1001302188 .....25	
	1001289252..... 51	1001302189 .....27	
	1001291148..... 13	1001302190 ..... 13	





**Corporate Office  
JLG Industries, Inc.  
1 JLG Drive  
McConnellsburg, PA 17233-9533 USA  
☎ (717) 485-5161 (Corporate)  
☎ (877) 554-5438 (Customer Support)  
📠 (717) 485-6417**

**Visit our website for JLG Worldwide Locations.  
[www.jlg.com](http://www.jlg.com)**



**OSHKOSH™**