



Illustrated Parts Manual

POWER TOWER, POWER TOWER CS

SN P900014859 to Present

3122335500

June 15, 2024 - Rev A

REVISION LOG

June 15, 2024 - A - Original Issue of Manual (Edited to B/M 1001311030 Revision C)

GENERAL INFORMATION



1) MACHINE IDENTIFICATION

Machines are identified by model and in some cases a combination of models, serial number (SN) or regional standard (i.e ANSI, CE, CSA). Components may also be identified by SN or manufacturer. Common components that may be identified by these characteristics are engines and hydraulic components.

2) PARTS MANUAL ORGANIZATION

Product information in this manual is organized under section titles. Frame, Cylinder, Hydraulic and Electrical are a few examples. Each section is organized by figure and page number. The information within the Figure is then organized by item number, part number, description and corresponding illustration (s).

3) TABLE OF CONTENTS (NOT SHOWN)

A table of contents is found toward the beginning of the manual. Figure number, description and page number are provided for quick reference to the page containing the related information.

4) RECOMMENDED SPARE PARTS (NOT SHOWN)

The Recommended Spare Parts List, located near the end of the manual, reference most frequently used maintenance parts.

5) PART NUMBER INDEX (NOT SHOWN)

A numerical index listing all part numbers and the corresponding page number(s) appears at the back of the manual.

GENERAL INFORMATION

6) NON-SERVICED PARTS

In some instances, it is necessary to display non-serviced parts, assemblies or installations. In the case of assemblies and installations there will be a Ref in the Qty. column. In case of parts that are not available for service within assemblies or components, there will be a NSS (Not Sold Separately) or NLA (No Longer Available) listed in the Qty. column of the manual.

7) PARTS LIST ITEM NUMBERS

Numbers shown in the item# column correspond to numbers used in the associated illustration (s). Item numbers which are missing from the sequence in the parts list are not used on that page.

8) INDENTED PARTS DESCRIPTION

An indented part description is included in the item under which it is indented.

9) ABBREVIATION AND SYMBOLS

AC.....	Alternating Current	L.....	Liter
ADE.....	Advanced Design Electronics	LB(LBS).....	Pounds
AG.....	Agricultural	LCD.....	Liquid Crystal Display
ANSI.....	American National Standards Institute	LED.....	Light Emitting Diodes
AR.....	As Required	LH.....	Left Hand
ASSY.....	Assembly	LRC.....	Low Rated Countries
AUS.....	Australia	LSS.....	Load Sensing System
AUX.....	Auxiliary	M(m).....	Metric/Meter
AWG.....	American Wire Gauge	MM(mm).....	Milimeter
B/M.....	Bill of Material	mA.....	Miliamps
CAC.....	Charge Air Cooler	NLA.....	No Longer Available
CE.....	European Conformity	NPT.....	National Pipe Threads
CCW.....	Counter Clockwise	NSS.....	Not Sold Separately
CM.....	Centimeter	OD.....	Outside Diameter
CW.....	Clockwise	ORB.....	O-Ring Boss
CSA.....	Canadian Standards Association	ORFS.....	O-Ring Face Seal
CYL.....	Cylinder	OZ (oz).....	Ounces
DIA.....	Diameter	PG.....	Page
DC.....	Direct Current	PN.....	Part Number
DEF.....	Diesel Exhaust Fluid	QT(qt.).....	Quarts
EMS.....	Emergency Stop	QTY.....	Quantity
ENG.....	Engine	REF.....	Reference
FT(ft).....	Feet	REV.....	Revision Level
GA(Ga).....	Gauge	RH.....	Right Hand
HRC.....	High Rated Countries	SAE.....	Society of Automotive Engineers
HVAC.....	Heating, Ventilating, and Air Conditioning	SN.....	Serial Number
HYD.....	Hydraulic	SPEC(S).....	Specifications
Hz.....	Hertz	T/T.....	Turntable
ID.....	Inside Diameter	UGM.....	Universal Ground Module
IN.....	inches	V.....	Volts
ISO.....	International Organization for Standards	W.....	Watts
JIC.....	Joint Industry Council	#.....	Number
KG.....	Kilogram		

10) ILLUSTRATION REFERENCE LETTERS

When necessary, illustrations may contain reference letters that are intended to track information (i. e. hoses, harnesses) from one point to another or to track visual enlargement of components to show details that may be located in another area on the illustration.

Note: Due to continuous product improvements, JLG Industries, Inc. reserves the right to make specification changes without prior notification. Contact JLG Industries, Inc. for updated information.

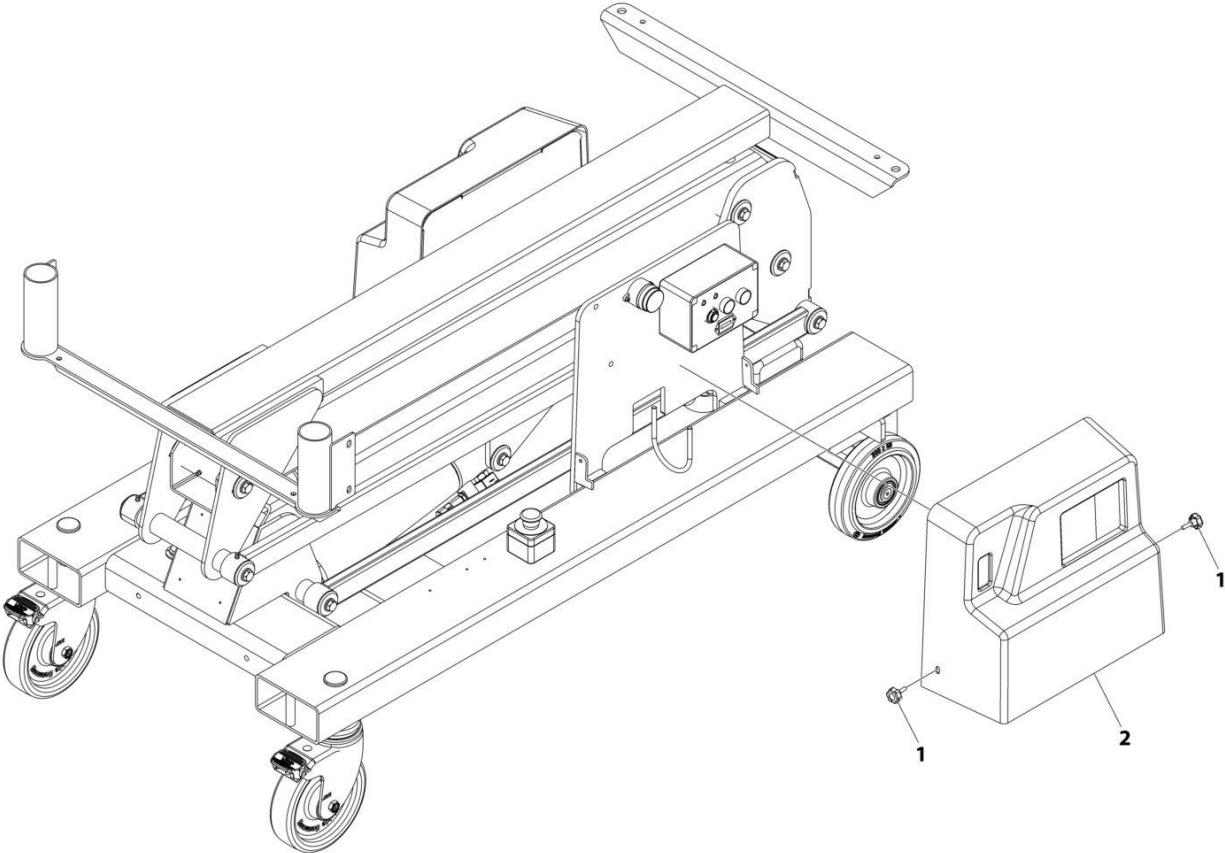
TABLE OF CONTENTS

SECTION 1 - FRAME.....	9
FIGURE 1-1. COVERS INSTALLATION (BLACK)	10
FIGURE 1-2. COVERS INSTALLATION (ORANGE).....	12
FIGURE 1-3. STEP INSTALLATION	14
FIGURE 1-4. WHEEL INSTALLATION.....	16
SECTION 2 - CONTROLS	19
FIGURE 2-1. CONTROLS INSTALLATION (POWER TOWER).....	20
FIGURE 2-2. GROUND CONTROL BOX ASSEMBLY.....	22
FIGURE 2-3. PLATFORM BOX ASSEMBLY.....	24
SECTION 3 - BOOM.....	27
FIGURE 3-1. BOOM ASSEMBLY (POWER TOWER).....	28
SECTION 4 - PLATFORM.....	31
FIGURE 4-1. PLATFORM INSTALLATION (POWER TOWER).....	32
SECTION 5 - CYLINDER.....	35
FIGURE 5-1. CYLINDER ASSEMBLY - LIFT	36
SECTION 6 - HYDRAULIC	39
FIGURE 6-1. HYDRAULICS INSTALLATION	40
FIGURE 6-2. POWER PACK ASSEMBLY	42
SECTION 7 - ELECTRICAL	45
FIGURE 7-1. AC POWER TO PLATFORM INSTALLATION (POWER TOWER)	46
FIGURE 7-2. BATTERY INSTALLATION.....	48
FIGURE 7-3. BATTERY CHARGER INSTALLATION - 110V (LATIN AMERICAN SPECS).....	50
FIGURE 7-4. BATTERY CHARGER INSTALLATION - 110V SURFACE MOUNTED (UK CA SPECS).....	52
FIGURE 7-5. BATTERY CHARGER INSTALLATION - 110V WALTHER 210304 (UK CA SPECS).....	54
FIGURE 7-6. BATTERY CHARGER INSTALLATION - 230V WALTHER 210306 (UK CA SPECS).....	56
FIGURE 7-7. BATTERY CHARGER INSTALLATION - 230V WALTHER 610306 SURFACE MOUNTED (UK CA SPECS).....	58
FIGURE 7-8. BATTERY CHARGER INSTALLATION - 240V EURO PLUG (CE SPECS)	60
SECTION 8 - DECALS.....	63
FIGURE 8-1. DECAL INSTALLATION (POWER TOWER)	64
SECTION 9 - RECOMMENDED SERVICE PARTS STOCK	67
FIGURE 9-1. RECOMMENDED SERVICE PARTS STOCK	68
SECTION 10 - SPECIAL OPTIONS/ACCESSORIES/KITS	69
FIGURE 10-1. SPECIAL OPTIONS/ACCESSORIES/KITS	70
PART NUMBER INDEX	71

SECTION 1 - FRAME

SECTION 1 - FRAME

FIGURE 1-1. COVERS INSTALLATION (BLACK)



ART_1001299198

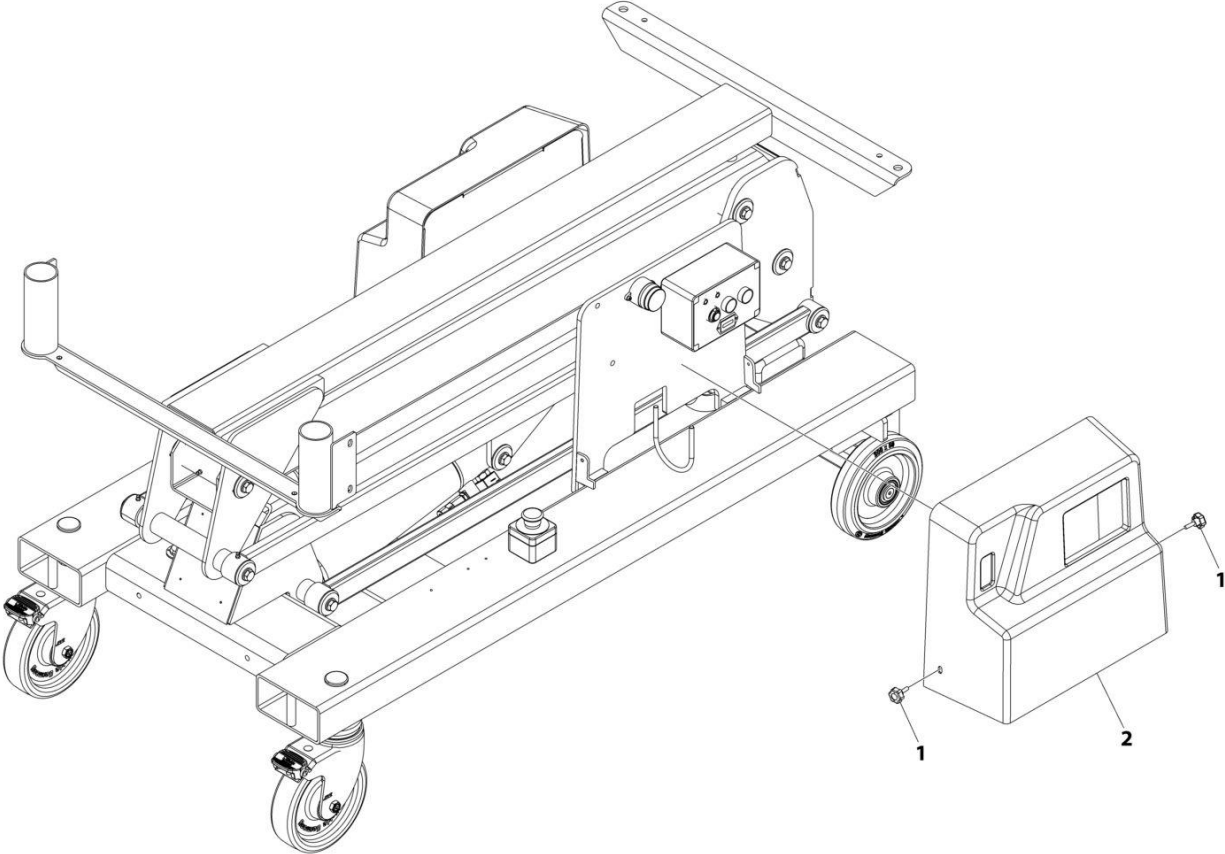
SECTION 1 - FRAME

FIGURE 1-1. COVERS INSTALLATION (BLACK)

ITEM	PART NUMBER	QTY	DESCRIPTION	REV
	1001299198	Ref	COVERS INSTALLATION (BLACK)	A
1	PTM107	4	Thumb Screw	
2	1001279201	1	Kit, Cover (Black) (Includes Both LH & RH Covers)	

SECTION 1 - FRAME

FIGURE 1-2. COVERS INSTALLATION (ORANGE)



ART_1001299197

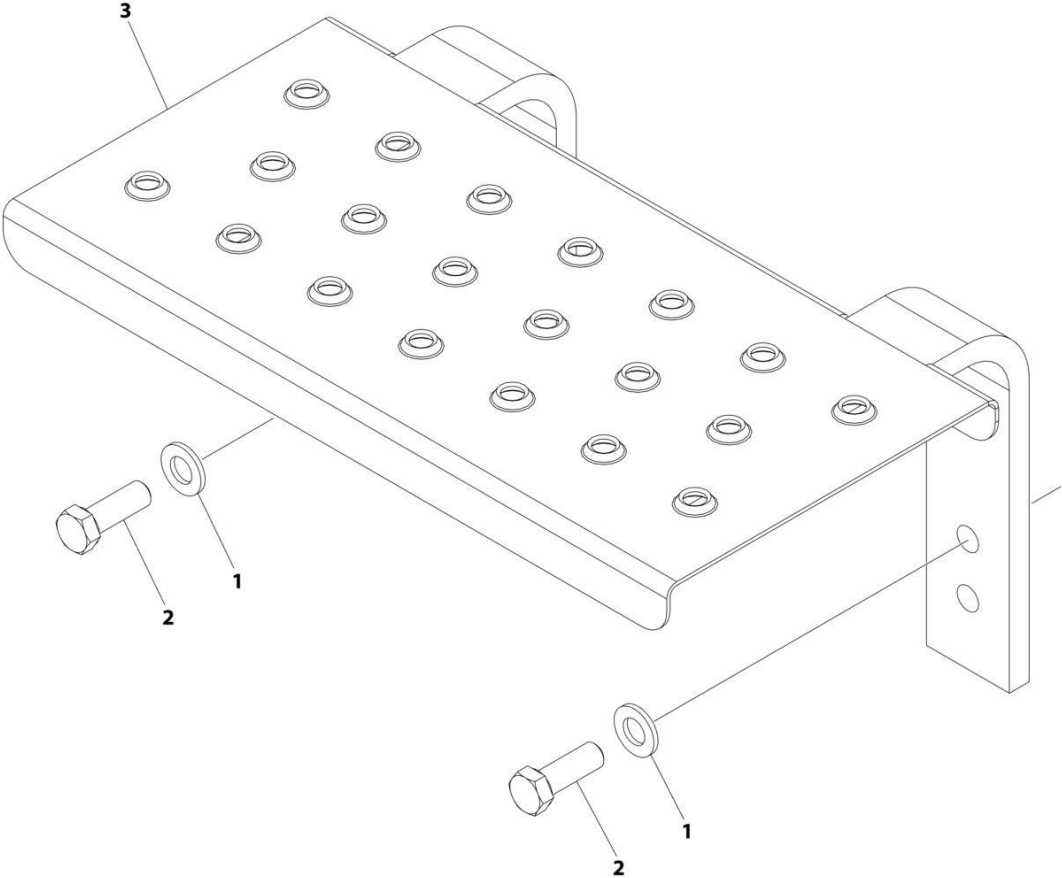
SECTION 1 - FRAME

FIGURE 1-2. COVERS INSTALLATION (ORANGE)

ITEM	PART NUMBER	QTY	DESCRIPTION	REV
	1001299197	Ref	COVERS INSTALLATION (ORANGE)	A
1	PTM107	4	Thumb Screw	
2	1001273760	1	Kit, Cover (Orange) (Includes Both LH & RH Covers)	

SECTION 1 - FRAME

FIGURE 1-3. STEP INSTALLATION



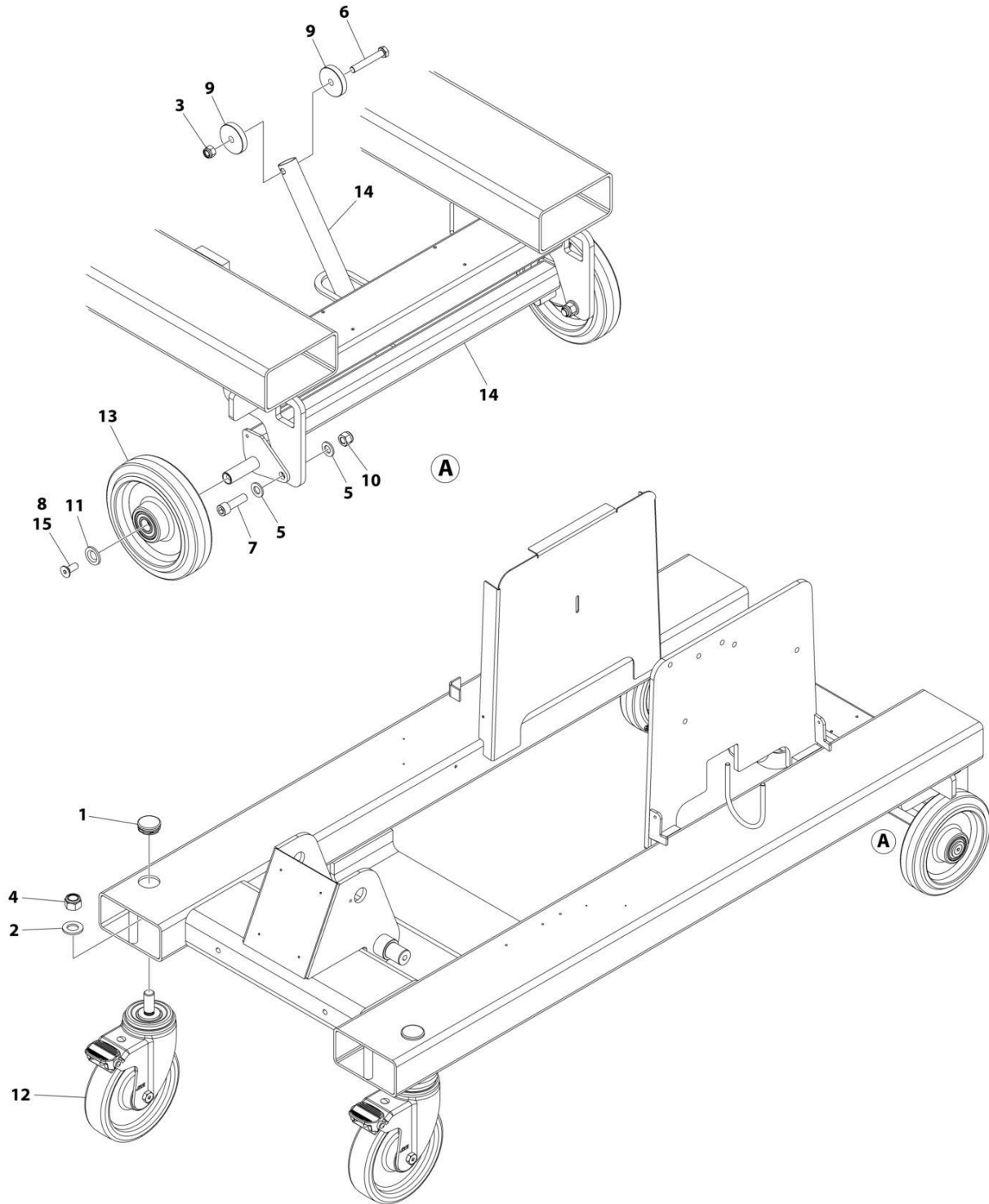
ART_1001299180

FIGURE 1-3. STEP INSTALLATION

ITEM	PART NUMBER	QTY	DESCRIPTION	REV
	1001299180	Ref	STEP INSTALLATION	B
1	1001265462	2	Washer M12	
2	1001265501	2	Bolt M12 x 35	
3	1001289037	1	Step	

SECTION 1 - FRAME

FIGURE 1-4. WHEEL INSTALLATION



ART_1001299177

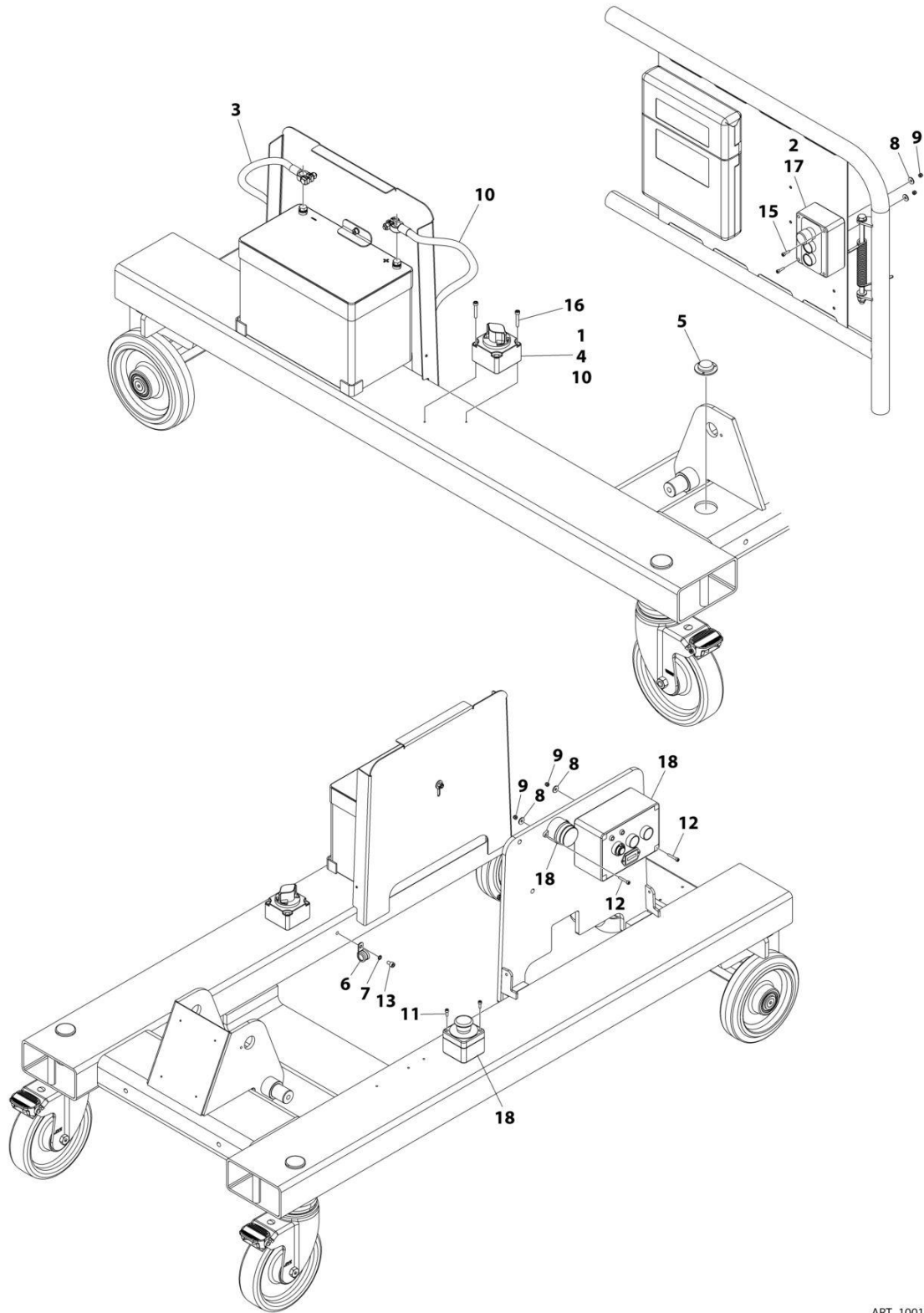
FIGURE 1-4. WHEEL INSTALLATION

ITEM	PART NUMBER	QTY	DESCRIPTION	REV
	1001299177	Ref	WHEEL INSTALLATION	A
1	PTM163	2	Cap	
2	1001265118	2	Washer 3/4	
3	1001265136	1	Nut M10	
4	1001265147	2	Nut 3/4	
5	1001265462	4	Washer M12	
6	1001265499	1	Bolt M10 x 65	
7	1001265513	2	Capscrew M12 x 40	
8	1001265516	2	Screw M10 x 25	
9	1001265649	2	Wheel	
10	1001265746	2	Nut M12 GRD 10	
11	1001265897	2	Washer	
12	1001277964	2	Wheel, Castor (Swivel)	
13	1001299162	2	Wheel, Castor	
14	1001305368	AR	Axle	
15	1001308702	1	Adhesive	

SECTION 2 - CONTROLS

SECTION 2 - CONTROLS

FIGURE 2-1. CONTROLS INSTALLATION (POWER TOWER)



ART_1001305786

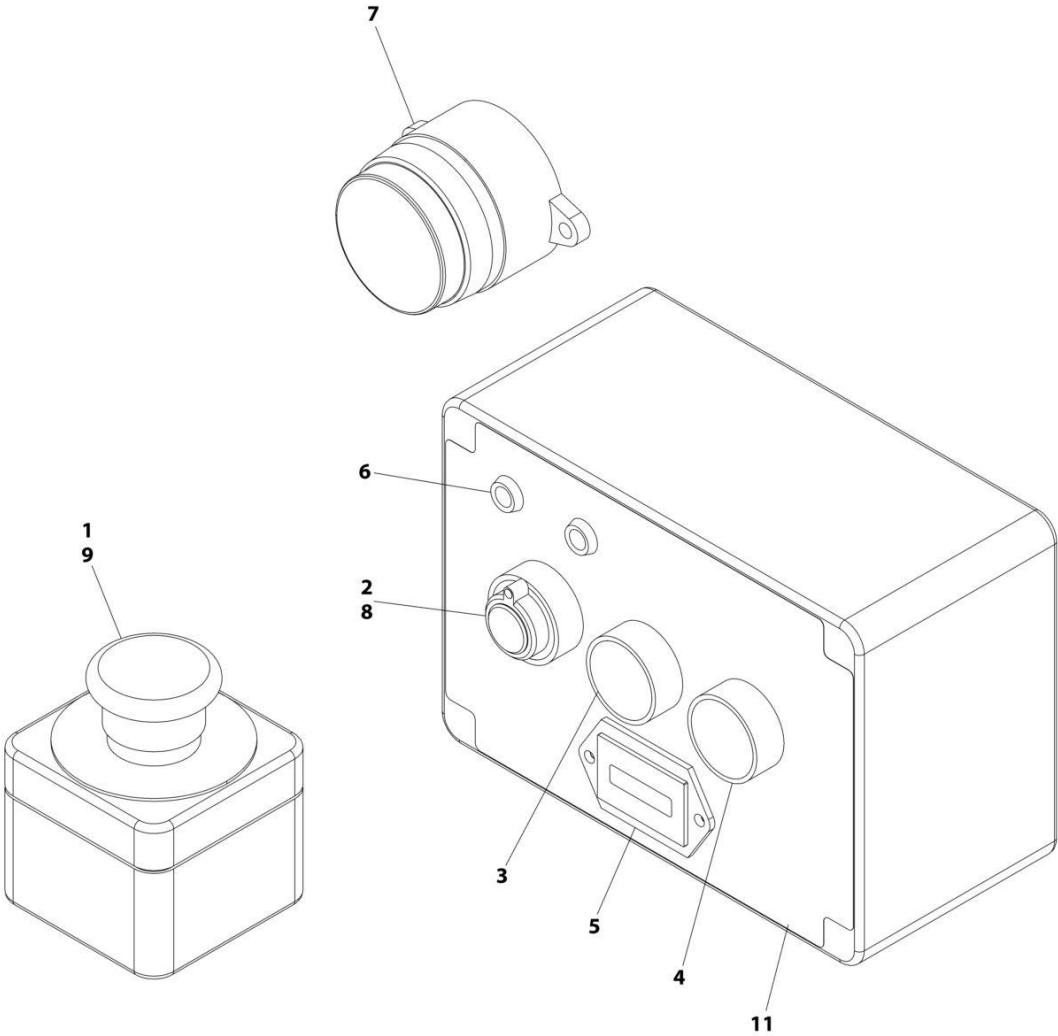
SECTION 2 - CONTROLS

FIGURE 2-1. CONTROLS INSTALLATION (POWER TOWER)

ITEM	PART NUMBER	QTY	DESCRIPTION	REV
	1001305786	Ref	CONTROLS INSTALLATION	B
1	PTE014	1	Switch, Battery Isolator	
2	PTE016	1	Cable, Black	
3	PTE017	1	Cable, Battery Negative 1450MM	
4	PTE018	1	Cable, Battery Positive 1700MM	
5	PTM106	1	Level	
6	PTM172	1	P-Clip	
7	1001264555	1	Washer	
8	1001265111	6	Washer M5	
9	1001265133	6	Nut M4	
10	1001265458	1	Cable, Battery Positive 600MM	
11	1001265509	2	Capscrew M4 x 12	
12	1001265510	4	Screw M4 x 25	
13	1001265511	1	Capscrew M6 x 10	
14	1001265521	14	Tie-Strap (Not Shown)	
15	1001265988	2	Screw M4 x 16	
16	1001265990	2	Screw M5 x 30	
17	1001266887	1	Platform Box Assembly (See Separate Breakdown in this Section)	
18	1001269149	Ref	Ground Control Box Assembly (See Separate Breakdown in this Section)	

SECTION 2 - CONTROLS

FIGURE 2-2. GROUND CONTROL BOX ASSEMBLY



ART_1001269149

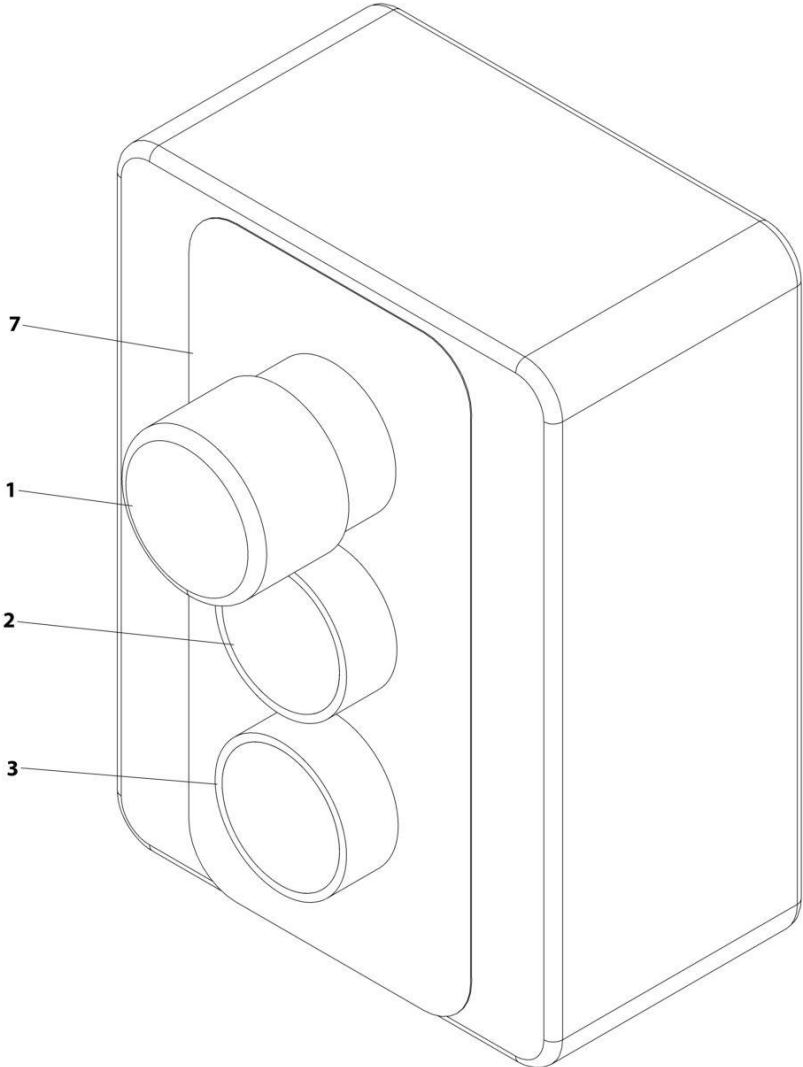
SECTION 2 - CONTROLS

FIGURE 2-2. GROUND CONTROL BOX ASSEMBLY

ITEM	PART NUMBER	QTY	DESCRIPTION	REV
	1001269149	Ref	GROUND CONTROL BOX ASSEMBLY	C
1	PTE004	1	Switch, Emergency Stop	
2	PTE005	1	Switch, Key	
3	PTE006	1	Button, Push (White)	
4	PTE007	1	Button, Push (Black)	
5	PTE021	1	Indicator, Battery Condition	
6	PTE022	2	Lamp, LED (Green)	
7	PTE023	1	Alarm	
8	PTM112	1	Key, Spare (Pair)	
9	PTE009	1	Connector, Block N.C. Red	
10	PTE008	6	Connector, Block N.O. Green (Not Shown - Located Inside Ground Control Box)	
11	1001274900	1	Decal - Ground Control	

SECTION 2 - CONTROLS

FIGURE 2-3. PLATFORM BOX ASSEMBLY



ART_1001266887

SECTION 2 - CONTROLS

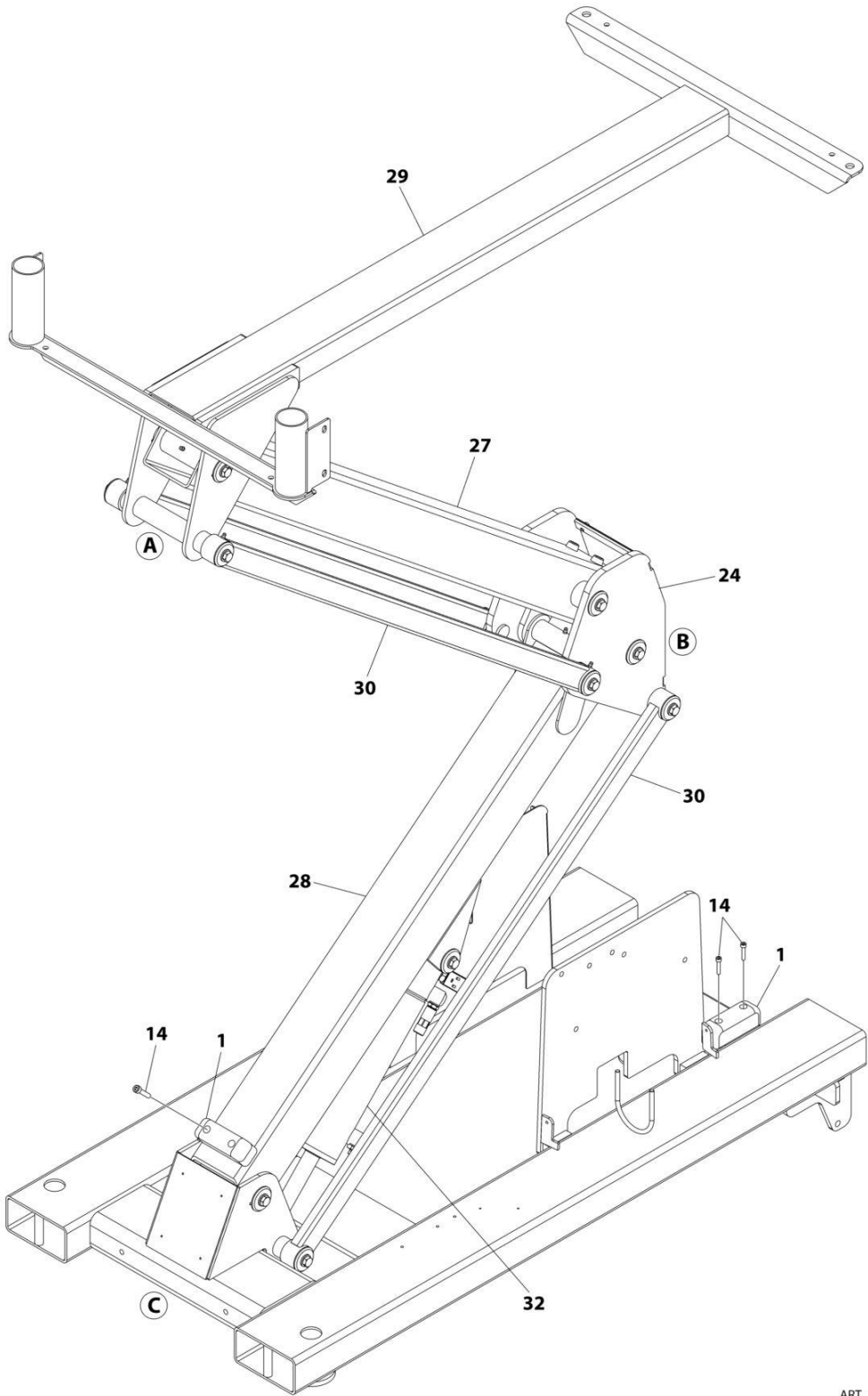
FIGURE 2-3. PLATFORM BOX ASSEMBLY

ITEM	PART NUMBER	QTY	DESCRIPTION	REV
	1001266887	Ref	PLATFORM BOX ASSEMBLY	C
1	PTE003	1	Button, Emergency Stop	
2	PTE006	1	Button, Push White	
3	PTE007	1	Button, Push Black	
4	PTE016	1	Cable, Black (Not Shown)	
5	PTE009	1	Connector, Block N.C. Red (Not Shown)	
6	PTE008	4	Connector, Block N.O. Green (Not Shown)	
7	1001277884	1	Decal - Platform Control	

SECTION 3 - BOOM

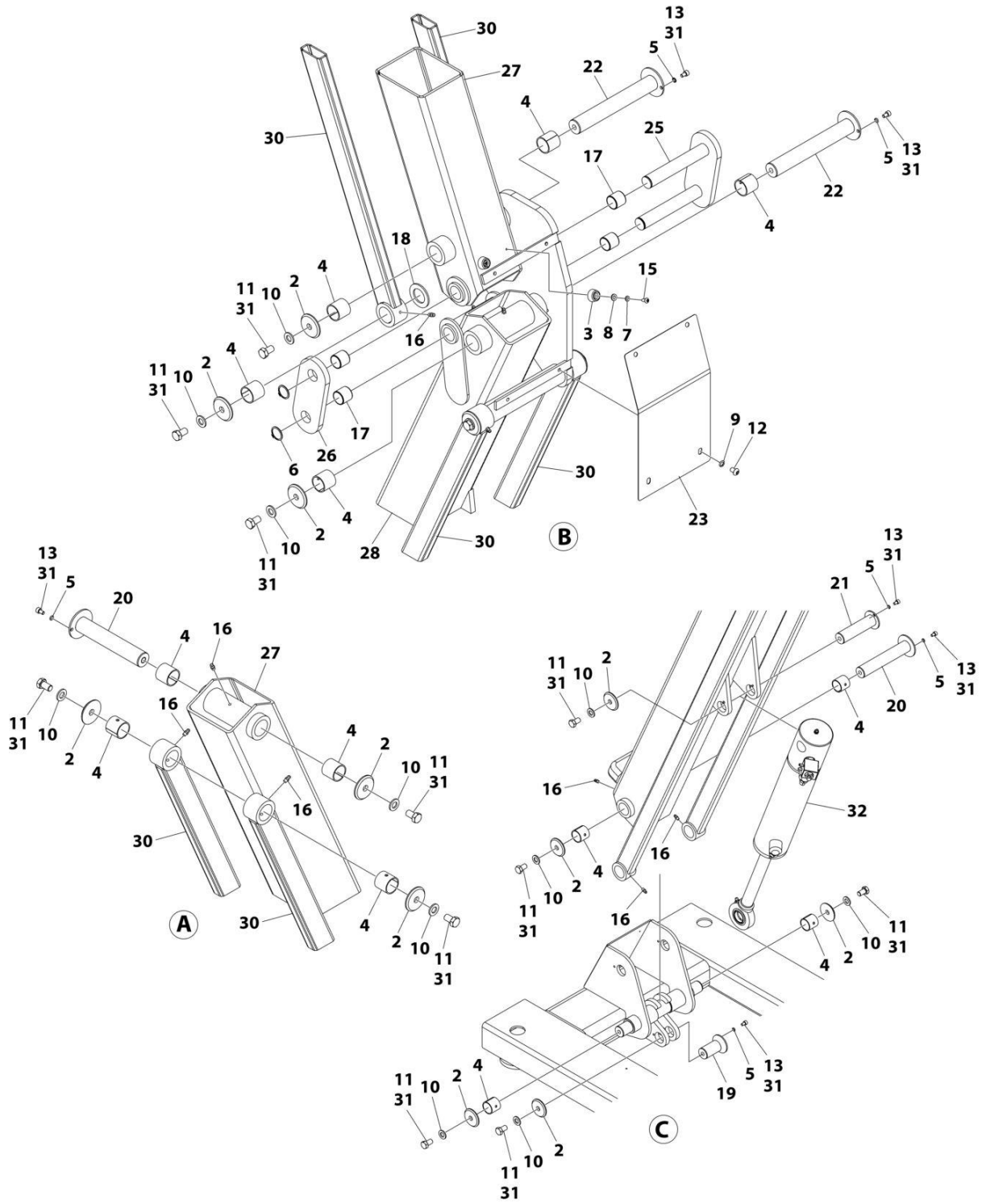
SECTION 3 - BOOM

FIGURE 3-1. BOOM ASSEMBLY (POWER TOWER)



ART_1001297265_10F2

SECTION 3 - BOOM



ART_1001297265_2OF2

SECTION 3 - BOOM

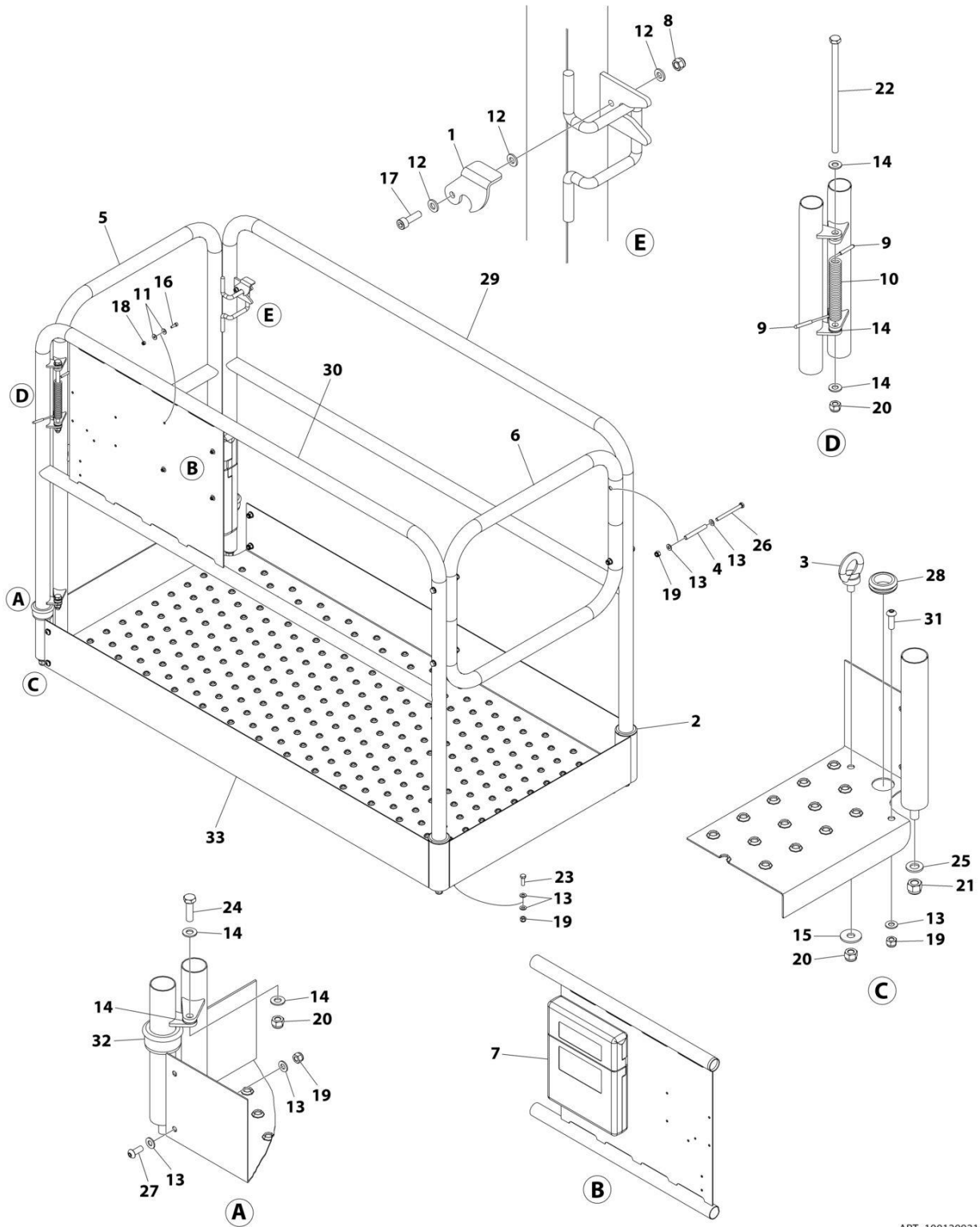
FIGURE 3-1. BOOM ASSEMBLY (POWER TOWER)

ITEM	PART NUMBER	QTY	DESCRIPTION	REV
	1001297265	Ref	BOOM ASSEMBLY	A
1	PTM126	3	Pad	
2	PTM148	14	Washer	
3	PTM2028	2	Pad	
4	PTM3030	16	Bushing	
5	1001264555	6	Washer	
6	1001265108	2	Clip	
7	1001265110	2	Washer M5	
8	1001265112	2	Washer M6	
9	1001265114	4	Washer M8	
10	1001265462	14	Washer M12	
11	1001265500	14	Bolt M12 x 20	
12	1001265506	4	Capscrew M8 x 12	
13	1001265511	6	Capscrew M6 x 10	
14	1001265512	6	Capscrew M6 x 30	
15	1001265517	2	Capscrew M5 x 12	
16	1001265518	13	Fitting, Grease	
17	1001265641	4	Bushing	
18	1001265661	2	Spacer	
19	1001265662	1	Pin	
20	1001265663	2	Pin	
21	1001265664	1	Pin	
22	1001265669	2	Pin	
23	1001293178	1	Cover	
24	1001295206	1	Upright	
25	1001295207	1	Link	
26	1001295208	1	Link	
27	1001295209	1	Boom (Upper)	
28	1001295210	1	Boom (Lower)	
29	1001295540	1	Platform, Top Support	
30	1001295972	4	Arm	
31	1001308702	AR	Adhesive	
32	1001309216	1	Cylinder Assembly (See Separate Breakdown in CYLINDER Section)	

SECTION 4 - PLATFORM

SECTION 4 - PLATFORM

FIGURE 4-1. PLATFORM INSTALLATION (POWER TOWER)



ART_1001299214

SECTION 4 - PLATFORM

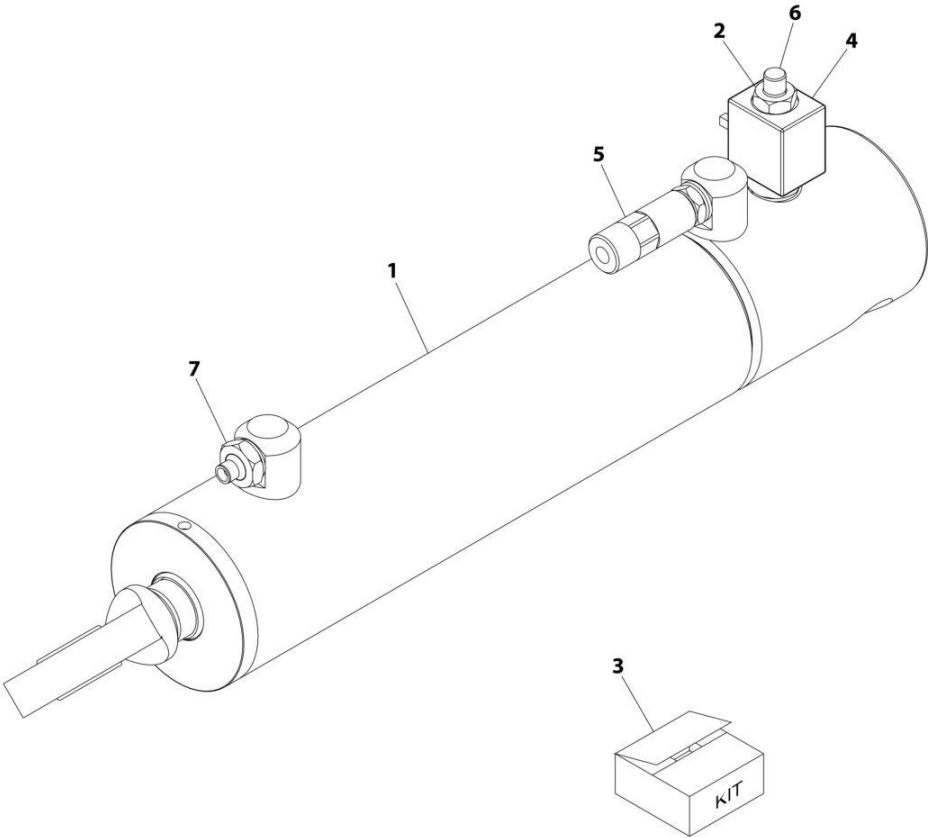
FIGURE 4-1. PLATFORM INSTALLATION (POWER TOWER)

ITEM	PART NUMBER	QTY	DESCRIPTION	REV
	1001299214	Ref	PLATFORM INSTALLATION	A
1	PTM133	1	Latch, Gate	
2	PTM137	2	Guide, Handrail	
3	PTM149	1	Bolt	
4	PTM173	4	Tube	
5	PTM1302	1	Gate	
6	PTM1352	1	Rail, End	
7	PTNM342	1	Holder, Document	
8	1001264557	1	Nut	
9	1001265092	2	Cap, Spring	
10	1001265099	1	Spring	
11	1001265111	8	Washer M5	
12	1001265112	3	Washer M6	
13	1001265113	22	Washer M8	
14	1001265115	6	Washer M10	
15	1001265116	1	Washer M10	
16	1001265125	4	Capscrew M5 x 16	
17	1001265127	1	Capscrew M6 x 20	
18	1001265134	4	Nut M5	
19	1001265135	12	Nut M8	
20	1001265136	3	Nut M10	
21	1001265138	4	Nut M12	
22	1001265144	1	Bolt M10 x 220	
23	1001265203	2	Bolt M8 x 25	
24	1001265204	1	Bolt M10 x 35	
25	1001265462	4	Washer M12	
26	1001265498	4	Bolt M8 x 90	
27	1001265507	4	Screw M8 x 20	
28	1001265645	1	Grommet	
29	1001265898	1	Handrail (LH)	
30	1001265899	1	Handrail (RH)	
31	1001266113	2	Screw M8 x 25	
32	1001266917	2	Support, Tube	
33	1001289043	1	Platform	

SECTION 5 - CYLINDER

SECTION 5 - CYLINDER

FIGURE 5-1. CYLINDER ASSEMBLY - LIFT



ART_1001309216

SECTION 5 - CYLINDER

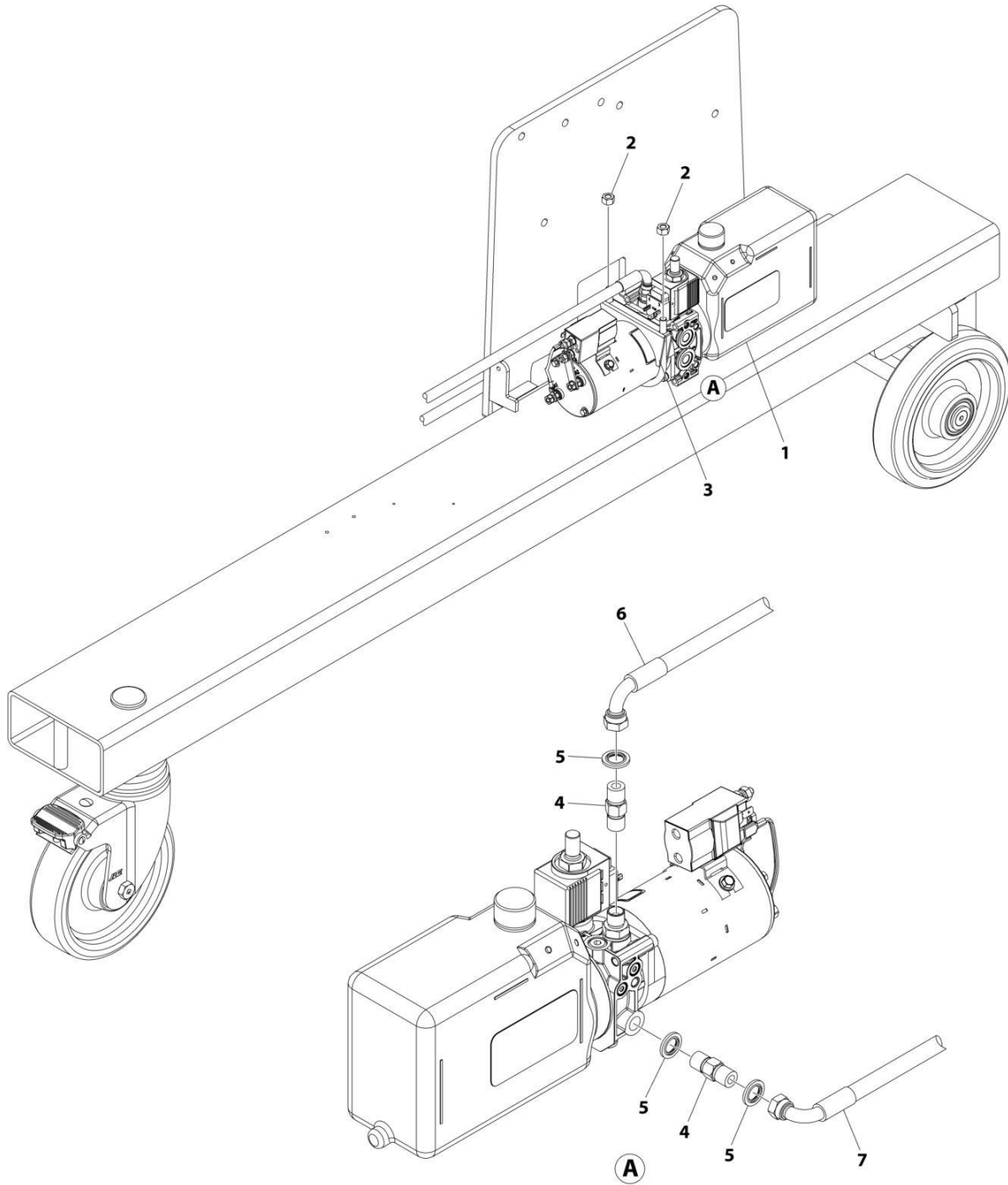
FIGURE 5-1. CYLINDER ASSEMBLY - LIFT

ITEM	PART NUMBER	QTY	DESCRIPTION	REV
	1001309216	Ref	CYLINDER ASSEMBLY - LIFT	A
1	PTH053	1	Cylinder Assembly	
2	PTH054	1	Valve, Cylinder Cartridge	
3	PTH055	1	Kit, Seal - Cylinder	
4	PTH057	1	Solenoid	
5	PTH059	1	Valve, Flow Control	
6	1001265643	1	Cap	
7	1001277716	1	Fitting, Straight	

SECTION 6 - HYDRAULIC

SECTION 6 - HYDRAULIC

FIGURE 6-1. HYDRAULICS INSTALLATION



ART_1001305785

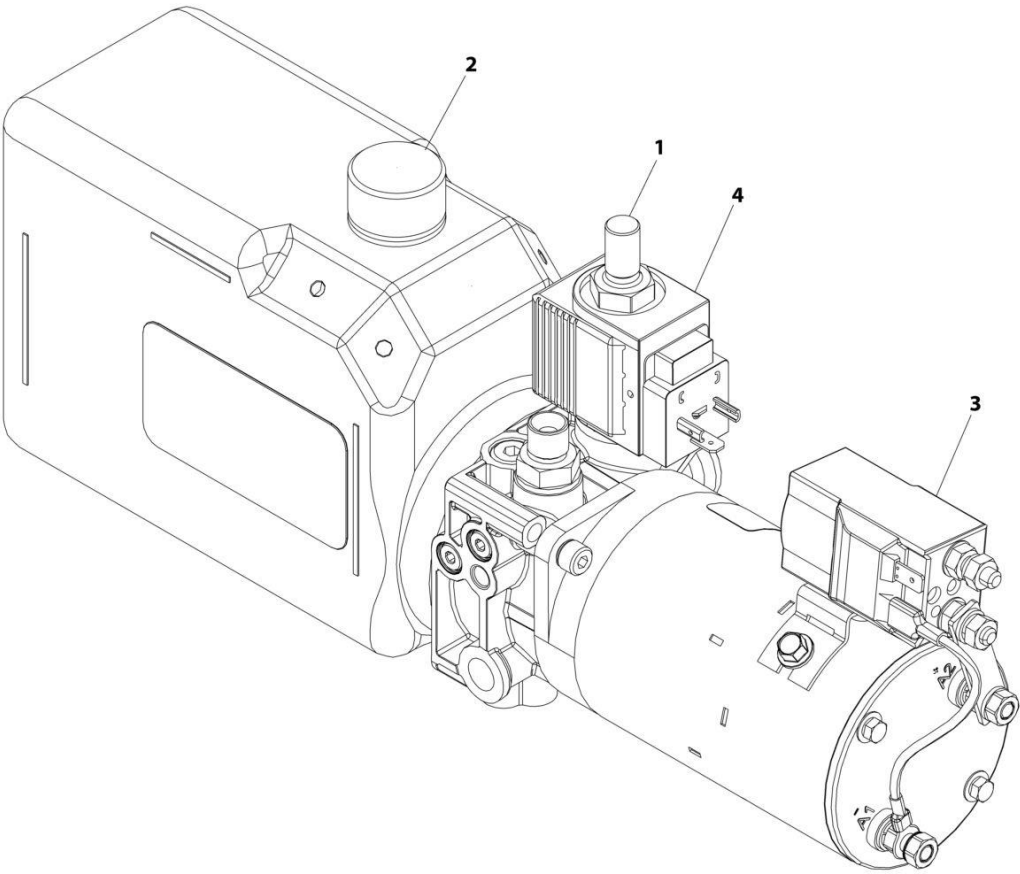
SECTION 6 - HYDRAULIC

FIGURE 6-1. HYDRAULICS INSTALLATION

ITEM	PART NUMBER	QTY	DESCRIPTION	REV
	1001305785	Ref	HYDRAULICS INSTALLATION	A
1	PTH051	1	Power Pack Assembly (See Separate Breakdown in this Section)	
2	1001265496	2	Nut M8	
3	1001265896	1	Clamp	
4	1001274228	2	Fitting, Straight	
5	1001274229	3	Washer, Bonded (Not Shown)	
6	1001274230	1	Hose (Pressure)	
7	1001274231	1	Hose (Drain)	

SECTION 6 - HYDRAULIC

FIGURE 6-2. POWER PACK ASSEMBLY



ART_PTH051

SECTION 6 - HYDRAULIC

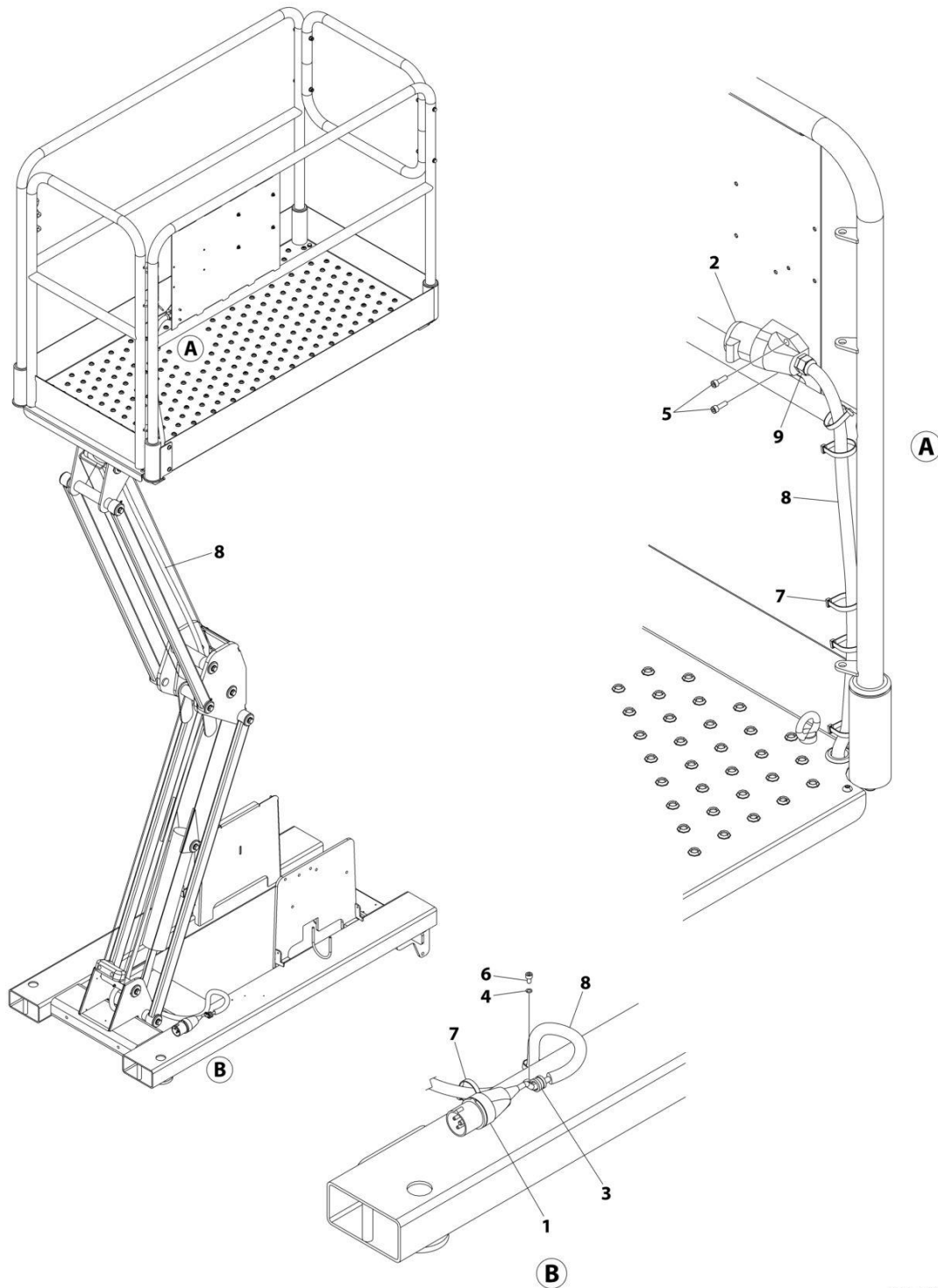
FIGURE 6-2. POWER PACK ASSEMBLY

ITEM	PART NUMBER	QTY	DESCRIPTION	REV
	PTH051	Ref	POWER PACK ASSEMBLY	B
	See Note	Ref	Note: No Other Service Parts Available for Purchase.	
1	PTH052	1	Valve, Cartridge	
2	PTH058	1	Cap, Filler/Breather	
3	PTH063	1	Motor, Start Solenoid	
4	PTH064	1	Valve, Solenoid	
5	1001265895	1	Coupling, Motor (Not Shown)	

SECTION 7 - ELECTRICAL

SECTION 7 - ELECTRICAL

FIGURE 7-1. AC POWER TO PLATFORM INSTALLATION (POWER TOWER)



ART_1001300475

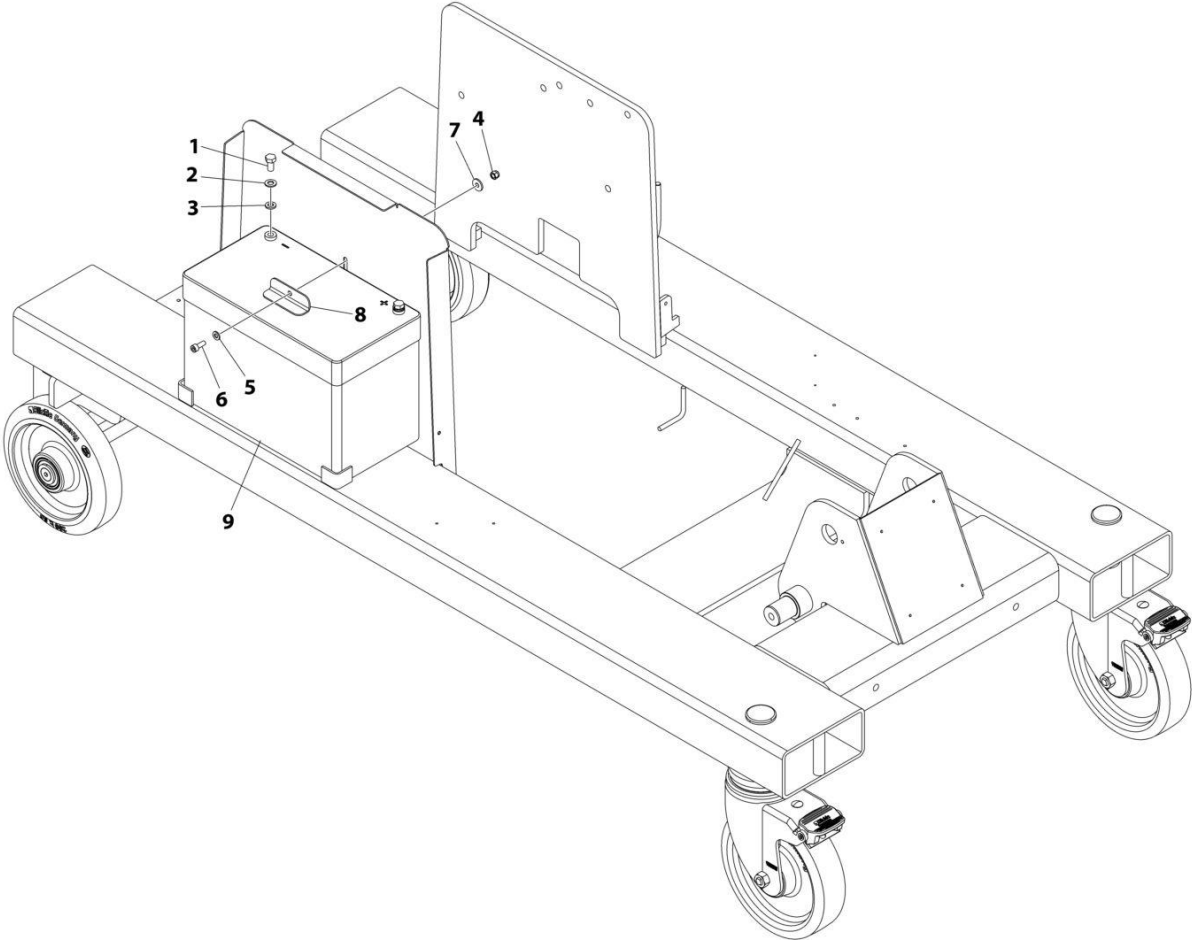
SECTION 7 - ELECTRICAL

FIGURE 7-1. AC POWER TO PLATFORM INSTALLATION (POWER TOWER)

ITEM	PART NUMBER	QTY	DESCRIPTION	REV
	1001300475	Ref	AC POWER TO PLATFORM INSTALLATION	A
1	PTE010	1	Plug	
2	PTE011	1	Socket	
3	PTM172	1	P-Clip	
4	1001264555	1	Washer	
5	1001265127	2	Capscrew M6 x 20	
6	1001265511	1	Capscrew M6 x 10	
7	1001265521	AR	Tie-Strap	
8	1001265522	1	Cable, 3-Wire	
9	1001266529	1	Connector, Strain Relief	

SECTION 7 - ELECTRICAL

FIGURE 7-2. BATTERY INSTALLATION



ART_1001305784

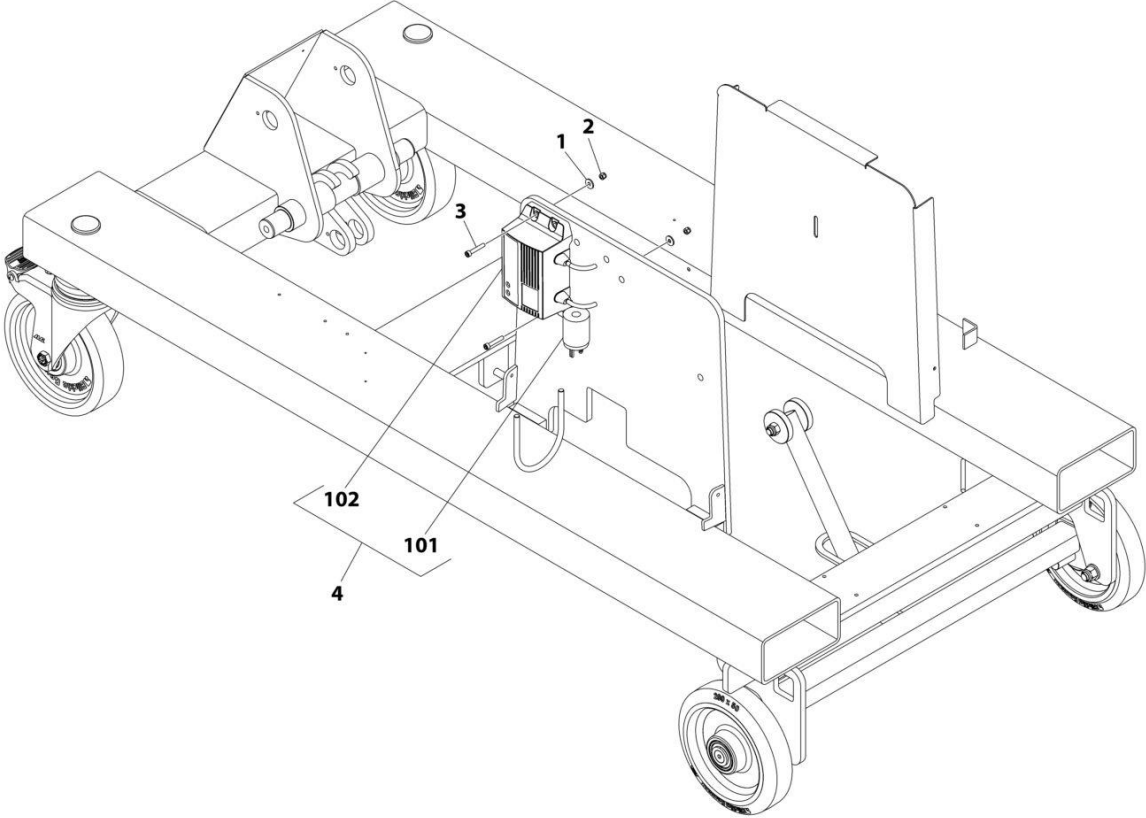
SECTION 7 - ELECTRICAL

FIGURE 7-2. BATTERY INSTALLATION

ITEM	PART NUMBER	QTY	DESCRIPTION	REV
	1001305784	Ref	BATTERY INSTALLATION	A
1	0760808	2	Bolt M8 x 16	
2	4811900	2	Washer M8	
3	4831900	2	Washer M8	
4	1001264557	1	Nut M8	
5	1001265112	1	Washer M6	
6	1001265126	1	Capscrew M6 x 16	
7	1001265461	1	Washer M6	
8	1001265671	1	Clamp	
9	1001277683	1	Battery	

SECTION 7 - ELECTRICAL

FIGURE 7-3. BATTERY CHARGER INSTALLATION - 110V (LATIN AMERICAN SPECS)



ART_1001307433

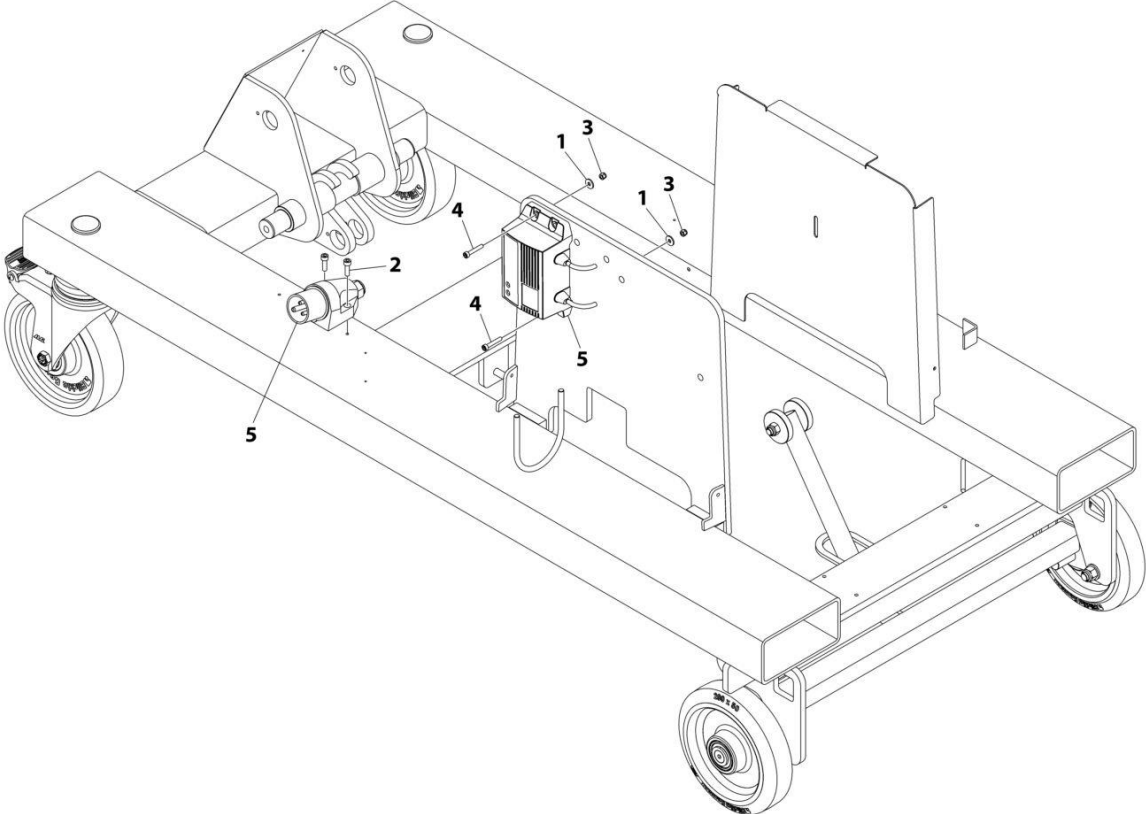
SECTION 7 - ELECTRICAL

FIGURE 7-3. BATTERY CHARGER INSTALLATION - 110V (LATIN AMERICAN SPECS)

ITEM	PART NUMBER	QTY	DESCRIPTION	REV
	1001307433	Ref	BATTERY CHARGER INSTALLATION	A
1	1001265111	2	Washer M5	
2	1001265134	2	Nut M5	
3	1001265990	2	Capscrew M5 x 30	
4	1001308712	Ref	Charger Assembly	
101	4460138	1	Plug	
102	1001276409	1	Charger	

SECTION 7 - ELECTRICAL

FIGURE 7-4. BATTERY CHARGER INSTALLATION - 110V SURFACE MOUNTED (UK CA SPECS)



ART_1001307432

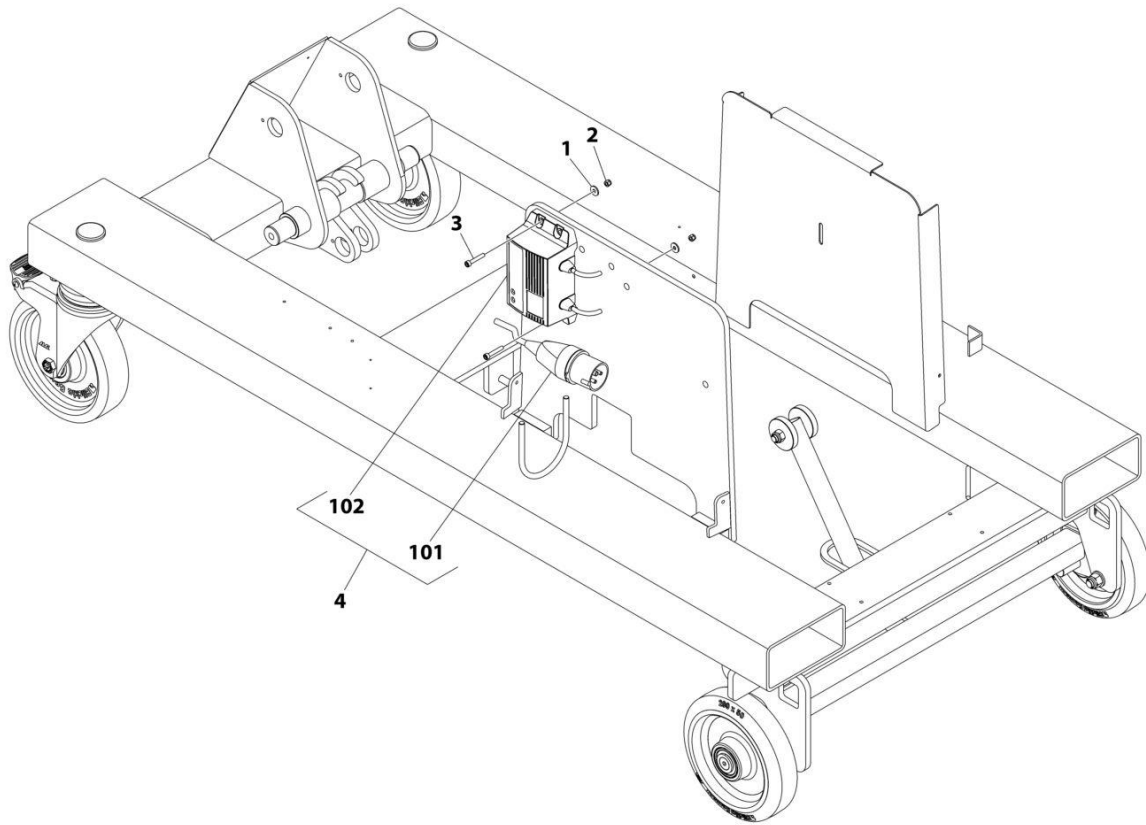
SECTION 7 - ELECTRICAL

FIGURE 7-4. BATTERY CHARGER INSTALLATION - 110V SURFACE MOUNTED (UK CA SPECS)

ITEM	PART NUMBER	QTY	DESCRIPTION	REV
	1001307432	Ref	BATTERY CHARGER INSTALLATION	A
1	1001265111	2	Washer M5	
2	1001265127	2	Capscrew M6 x 20	
3	1001265134	2	Nut M5	
4	1001265990	2	Capscrew M5 x 30	
5	1001308709	1	Charger	

SECTION 7 - ELECTRICAL

FIGURE 7-5. BATTERY CHARGER INSTALLATION - 110V WALTHER 210304 (UK CA SPECS)



ART_1001308713

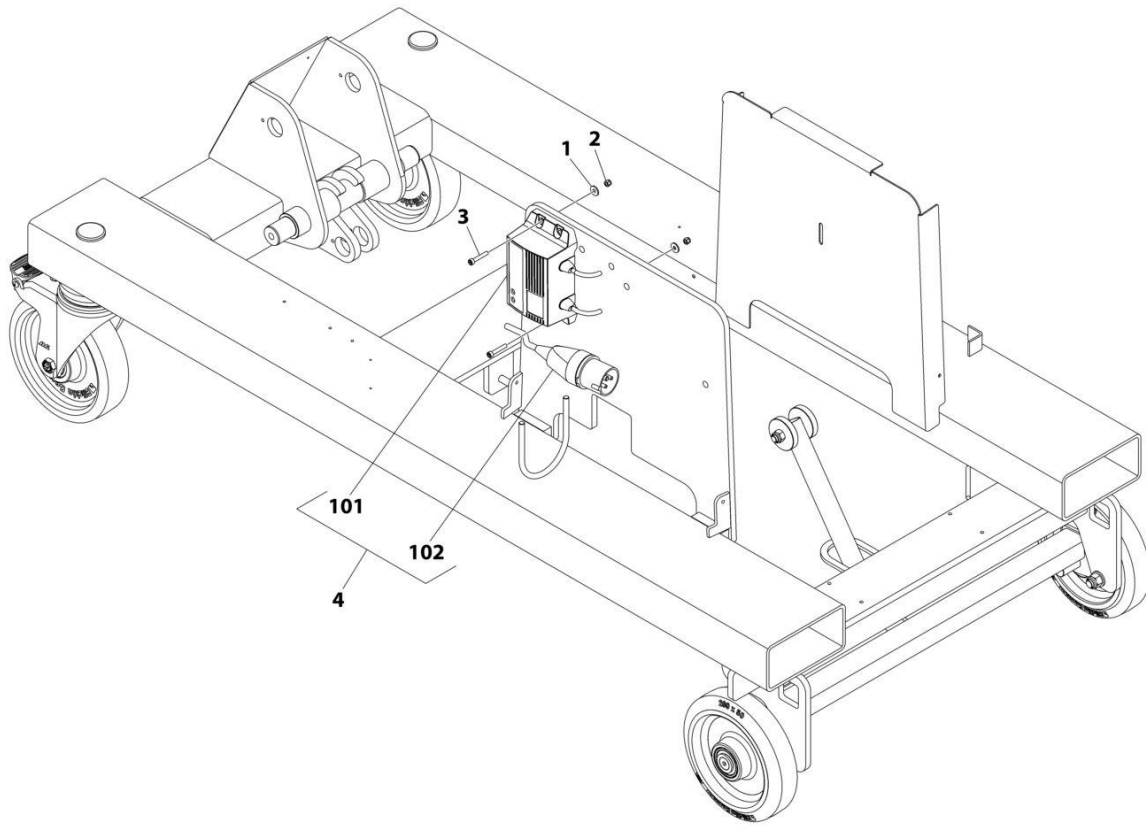
SECTION 7 - ELECTRICAL

FIGURE 7-5. BATTERY CHARGER INSTALLATION - 110V WALTHER 210304 (UK CA SPECS)

ITEM	PART NUMBER	QTY	DESCRIPTION	REV
	1001308713	Ref	BATTERY CHARGER INSTALLATION	A
1	1001265111	2	Washer M5	
2	1001265134	2	Nut M5	
3	1001265990	2	Capscrew M5 x 30	
4	1001308711	Ref	Charger Assembly	
101	PTE010	1	Plug	
102	1001276409	1	Charger	

SECTION 7 - ELECTRICAL

FIGURE 7-6. BATTERY CHARGER INSTALLATION - 230V WALTHER 210306 (UK CA SPECS)



ART_1001310473

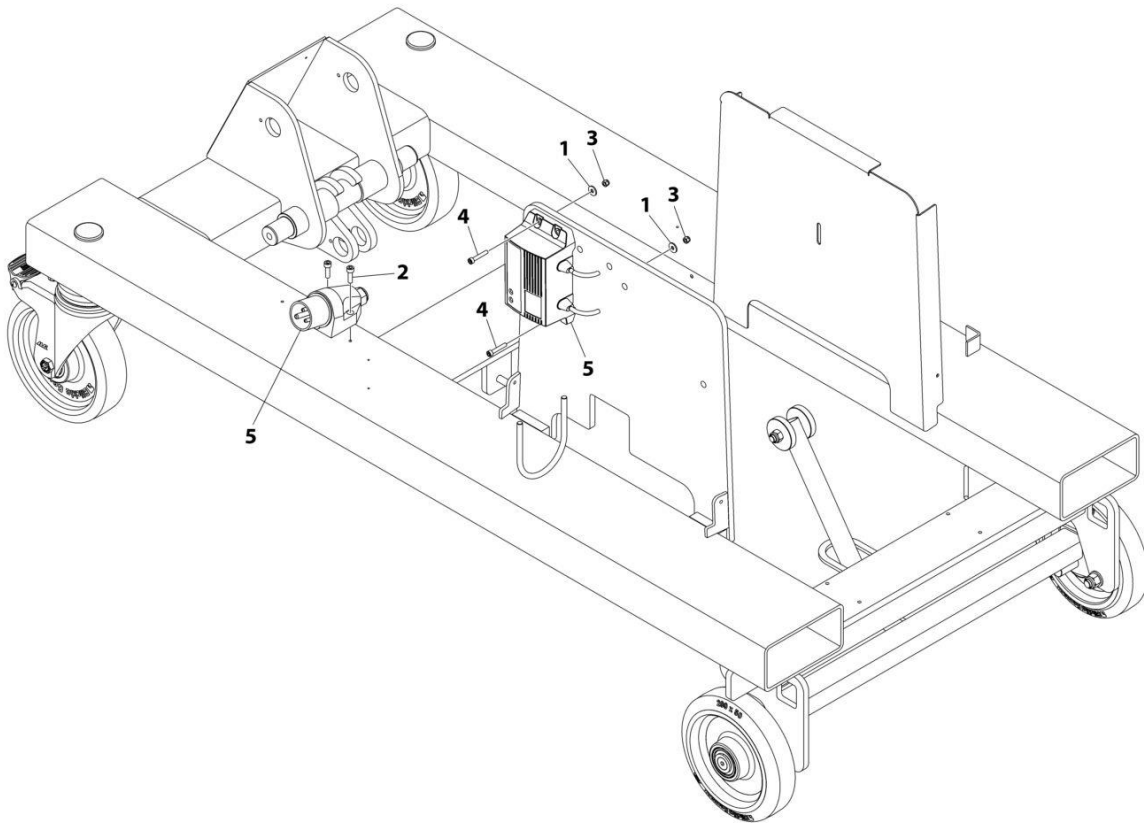
SECTION 7 - ELECTRICAL

FIGURE 7-6. BATTERY CHARGER INSTALLATION - 230V WALTHER 210306 (UK CA SPECS)

ITEM	PART NUMBER	QTY	DESCRIPTION	REV
	1001310473	Ref	BATTERY CHARGER INSTALLATION	A
1	1001265111	2	Washer M5	
2	1001265134	2	Nut M5	
3	1001265990	2	Capscrew M5 x 30	
4	1001310409	Ref	Charger Assembly	
101	1001276409	1	Charger	
102	1001278107	1	Plug	

SECTION 7 - ELECTRICAL

FIGURE 7-7. BATTERY CHARGER INSTALLATION - 230V WALTHER 610306 SURFACE MOUNTED (UK CA SPECS)



ART_1001305787

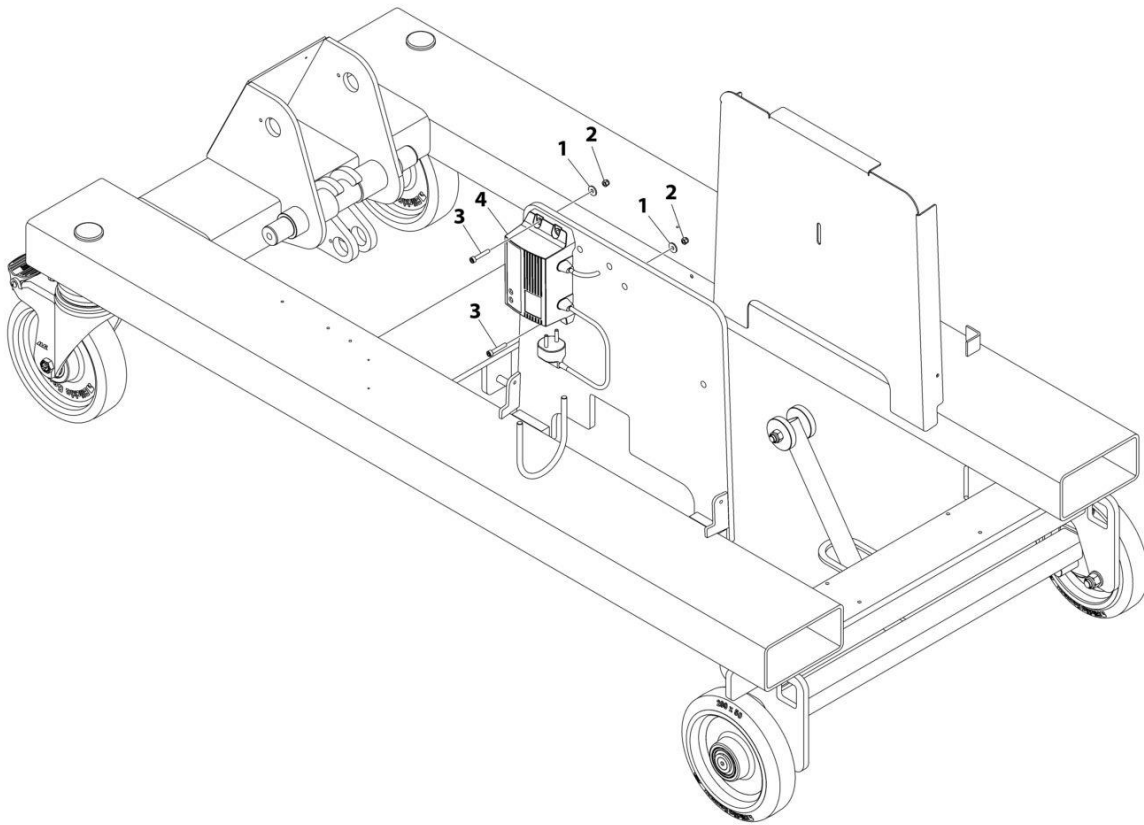
SECTION 7 - ELECTRICAL

**FIGURE 7-7. BATTERY CHARGER INSTALLATION - 230V WALTHER 610306 SURFACE MOUNTED
(UK CA SPECS)**

ITEM	PART NUMBER	QTY	DESCRIPTION	REV
	1001305787	Ref	BATTERY CHARGER INSTALLATION	A
1	1001265111	2	Washer M5	
2	1001265127	2	Capscrew M6 x 20	
3	1001265134	2	Nut M5	
4	1001265990	2	Capscrew M5 x 30	
5	1001308710	1	Charger	

SECTION 7 - ELECTRICAL

FIGURE 7-8. BATTERY CHARGER INSTALLATION - 240V EURO PLUG (CE SPECS)



ART_1001311567

SECTION 7 - ELECTRICAL

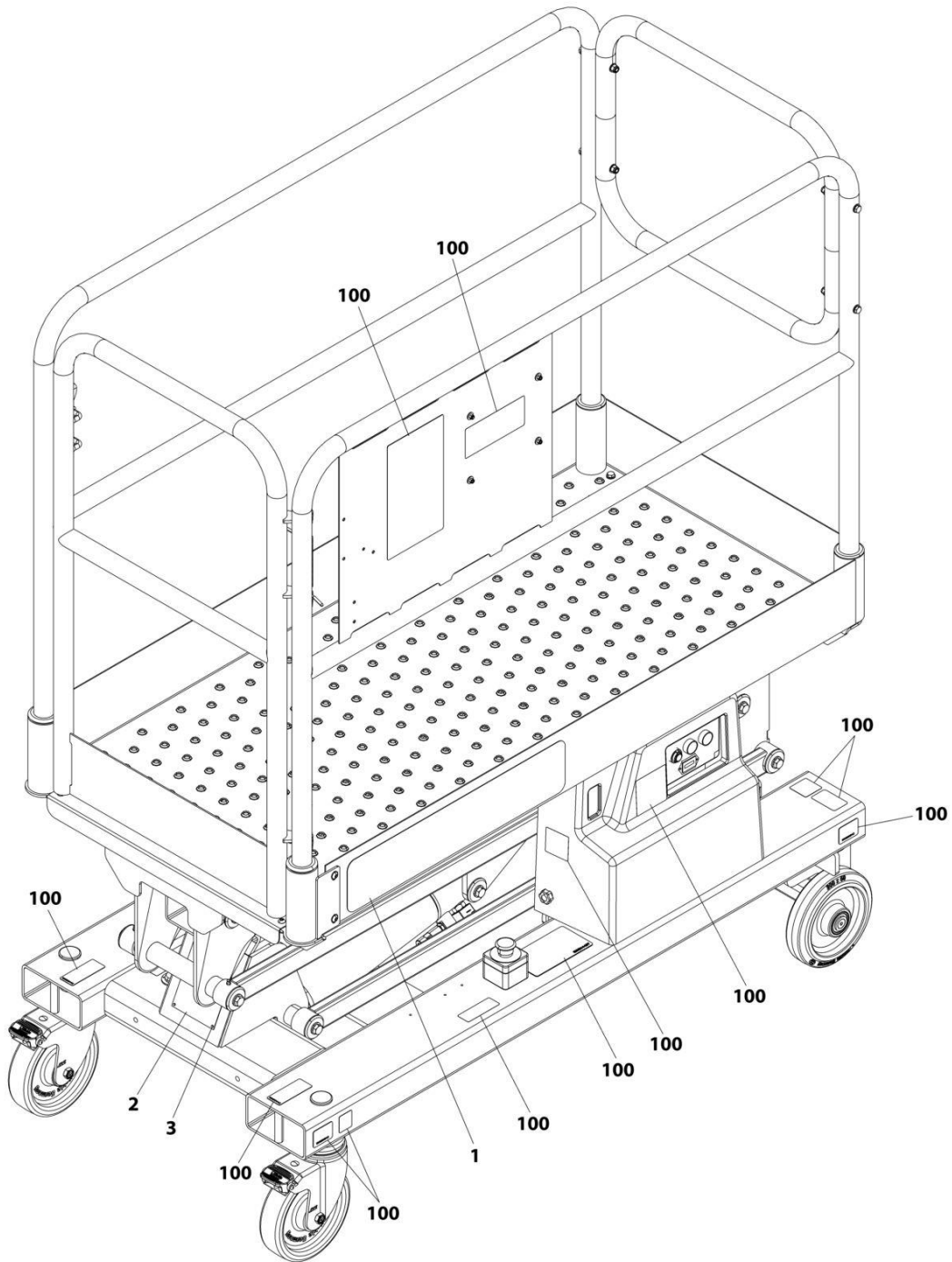
FIGURE 7-8. BATTERY CHARGER INSTALLATION - 240V EURO PLUG (CE SPECS)

ITEM	PART NUMBER	QTY	DESCRIPTION	REV
	1001311567	Ref	BATTERY CHARGER INSTALLATION	A
1	1001265111	2	Washer M5	
2	1001265134	2	Nut M5	
3	1001265990	2	Capscrew M5 x 30	
4	1001276409	1	Charger, Battery (Includes Plug - Plug Not Sold Separately)	

SECTION 8 - DECALS

SECTION 8 - DECALS

FIGURE 8-1. DECAL INSTALLATION (POWER TOWER)



ART_1001266517

SECTION 8 - DECALS

FIGURE 8-1. DECAL INSTALLATION (POWER TOWER)

ITEM	PART NUMBER	QTY	DESCRIPTION	REV
	1001266517	Ref	DECAL INSTALLATION	C
	1001306110	Ref	DECAL CHART	A
1	PTM109	2	Decal, Power Tower Logo	
2	See Note	NSS	Nameplate, Serial Number (Note: Not Available for Purchase)	
3	1001265149	4	Rivet	
100	1001287530	1	Kit, Decal Sheet Power Tower (Note: Individual Decals Not Available. Purchase Kit)	

SECTION 9 - RECOMMENDED SERVICE PARTS STOCK

SECTION 9 - RECOMMENDED SERVICE PARTS STOCK

SECTION 9 - RECOMMENDED SERVICE PARTS STOCK

FIGURE 9-1. RECOMMENDED SERVICE PARTS STOCK

ITEM	PART NUMBER	QTY	DESCRIPTION	REV
		Ref	Note: The following list will service one machine (built to current production per date on the front cover) with emergency repair parts which can be installed in the field. Parts from the list should be replaced when inventory is depleted to keep service parts stock supplied. For further information, contact your JLG dealer or the JLG Industries Parts Department.	
	1001266887	1	Box, Platform Control	
	PTH058	1	Cap, Filler/Breather (Hydraulic Tank)	
	PTE009	1	Contact, N.C. (Red) Stop (Ground Control Box)	
	PTE008	1	Contact, N.O. (Green) Stop (Ground Control Box)	
	PTM112	Ref	Key, Spare Pair	
	PTM133	1	Latch, Gate (POWER TOWER)	
	PTH057	1	Solenoid (Lift Cylinder)	
	PTE014	1	Switch, Battery Isolator	
	PTE004	1	Switch, Emergency Stop (Ground Control Box)	
	PTE003	1	Switch, Emergency Stop (Platform Control Box)	
	PTE005	1	Switch, Key (Ground Control Box)	
	PTE007	1	Switch, Push Button (Black) (Ground Control Box)	
	PTE006	1	Switch, Push Button (White) (Ground Control Box)	
	1001265649	1	Wheel	
	1001277964	1	Wheel, Swivel	

SECTION 10 - SPECIAL OPTIONS/ACCESSORIES/KITS

SECTION 10 - SPECIAL OPTIONS/ACCESSORIES/KITS

SECTION 10 - SPECIAL OPTIONS/ACCESSORIES/KITS

FIGURE 10-1. SPECIAL OPTIONS/ACCESSORIES/KITS

ITEM	PART NUMBER	QTY	DESCRIPTION	REV
		Ref	Note: This list is to accomodate machines ordered with special equipment. Options may not be applicable to all models. For more specific parts information contact JLG Parts Department.	
	1001306348	Ref	Bungee/Lanyard Kit	
	1001312350	Ref	Confined Space Kit	
	1001316122	Ref	CS (Confined Space) Modification Kit (Lift Open Gate) (Modifies std Power Tower to Power Tower CS model)	
	1001316123	Ref	CS (Confined Space) Modification Kit (Push Open Gate) (Modifies std Power Tower to Power Tower CS model)	
	1001316115	Ref	CS (Confined Space) Decal Modification Kit (Modifies std Power Tower to Power Tower CS model)	
	1001306349	Ref	D-Rings Kit	
	PTM112	1	Key (1 Pair)	
	1001306351	Ref	MEWP Bag Kit	
	1001256697	Ref	Service Tools/Kits	H
	1001306352	Ref	Tether Tape Kit	
	1001306350	Ref	Velcro Anchor Kit	

SECTION 10 - SPECIAL OPTIONS/ACCESSORIES/KITS

PART NUMBER INDEX

SECTION 10 - SPECIAL OPTIONS/ACCESSORIES/KITS

0760808.....	49	1001265513	17	1001289037	15	4811900.....	49
1001256697	70	1001265516	17	1001289043	33	4831900.....	49
1001264555	21, 30, 47	1001265517	30	1001293178	30	PTE003.....	25, 68
1001264557	33, 49	1001265518	30	1001295206	30	PTE004.....	23, 68
1001265092	33	1001265521	21, 47	1001295207	30	PTE005.....	23, 68
1001265099	33	1001265522	47	1001295208	30	PTE006.....	23, 25, 68
1001265108	30	1001265641	30	1001295209	30	PTE007.....	23, 25, 68
1001265110	30	1001265643	37	1001295210	30	PTE008.....	23, 25, 68
1001265111	21, 33, 51, 53, 55, 57, 59, 61	1001265645	33	1001295540	30	PTE009.....	23, 25, 68
1001265112	30, 33, 49	1001265649	17, 68	1001295972	30	PTE010.....	47, 55
1001265113	33	1001265661	30	1001297265	30	PTE011.....	47
1001265114	30	1001265662	30	1001299162	17	PTE014.....	21, 68
1001265115	33	1001265663	30	1001299177	17	PTE016.....	21, 25
1001265116	33	1001265664	30	1001299180	15	PTE017.....	21
1001265118	17	1001265669	30	1001299197	13	PTE018.....	21
1001265125	33	1001265671	49	1001299198	11	PTE021.....	23
1001265126	49	1001265746	17	1001299214	33	PTE022.....	23
1001265127	33, 47, 53, 59	1001265895	43	1001300475	47	PTE023.....	23
1001265133	21	1001265896	41	1001305368	17	PTH051	41, 43
1001265134	33, 51, 53, 55, 57, 59, 61	1001265897	17	1001305784	49	PTH052	43
1001265135	33	1001265898	33	1001305785	41	PTH053	37
1001265136	17, 33	1001265899	33	1001305786	21	PTH054	37
1001265138	33	1001265988	21	1001305787	59	PTH055	37
1001265144	33	1001265990	21, 51, 53, 55, 57, 59, 61	1001306110	65	PTH057	37, 68
1001265147	17	1001266113	33	1001306348	70	PTH058	43, 68
1001265149	65	1001266517	65	1001306349	70	PTH059	37
1001265203	33	1001266529	47	1001306350	70	PTH063	43
1001265204	33	1001266887	21, 25, 68	1001306351	70	PTH064	43
1001265458	21	1001266917	33	1001306352	70	PTM106.....	21
1001265461	49	1001269149	21, 23	1001307432	53	PTM107.....	11, 13
1001265462	15, 17, 30, 33	1001273760	13	1001307433	51	PTM109.....	65
1001265496	41	1001274228	41	1001308702	17, 30	PTM112.....	23, 68, 70
1001265498	33	1001274229	41	1001308709	53	PTM126.....	30
1001265499	17	1001274229	41	1001308710	59	PTM1302.....	33
1001265500	30	1001274230	41	1001308711	55	PTM133.....	33, 68
1001265501	15	1001274231	41	1001308712	51	PTM1352.....	33
1001265506	30	1001274900	23	1001308713	55	PTM137.....	33
1001265507	33	1001276409	51, 55, 57, 61	1001309216	30, 37	PTM148.....	30
1001265509	21	1001277683	49	1001310409	57	PTM149.....	33
1001265510	21	1001277716	37	1001310473	57	PTM163.....	17
1001265511	21, 30, 47	1001277884	25	1001311567	61	PTM172.....	21, 47
1001265512	30	1001277964	17, 68	1001312350	70	PTM173.....	33
		1001278107	57	1001316115	70	PTM2028.....	30
		1001279201	11	1001316122	70	PTM3030.....	30
		1001287530	65	1001316123	70	PTNM342.....	33
				4460138	51		



**Corporate Office
JLG Industries, Inc.
1 JLG Drive
McConnellsburg, PA 17233-9533 USA
☎ (717) 485-5161 (Corporate)
☎ (877) 554-5438 (Customer Support)
📠 (717) 485-6417**

**Visit our website for JLG Worldwide Locations.
www.jlg.com**



OSHKOSH™