



Illustrated Parts Manual

Model 15VPSP

3121822

May 29, 2013



An Oshkosh Corporation Company

REVISION LOG

September 5, 2000 - Original Issue Of Manual

March 27, 2003 - Revised (Manual edited to 0010566 Revision 22)

December 20, 2006 - Revised Manual

November 15, 2010 - Revised Manual

May 29, 2013 - Revised Manual

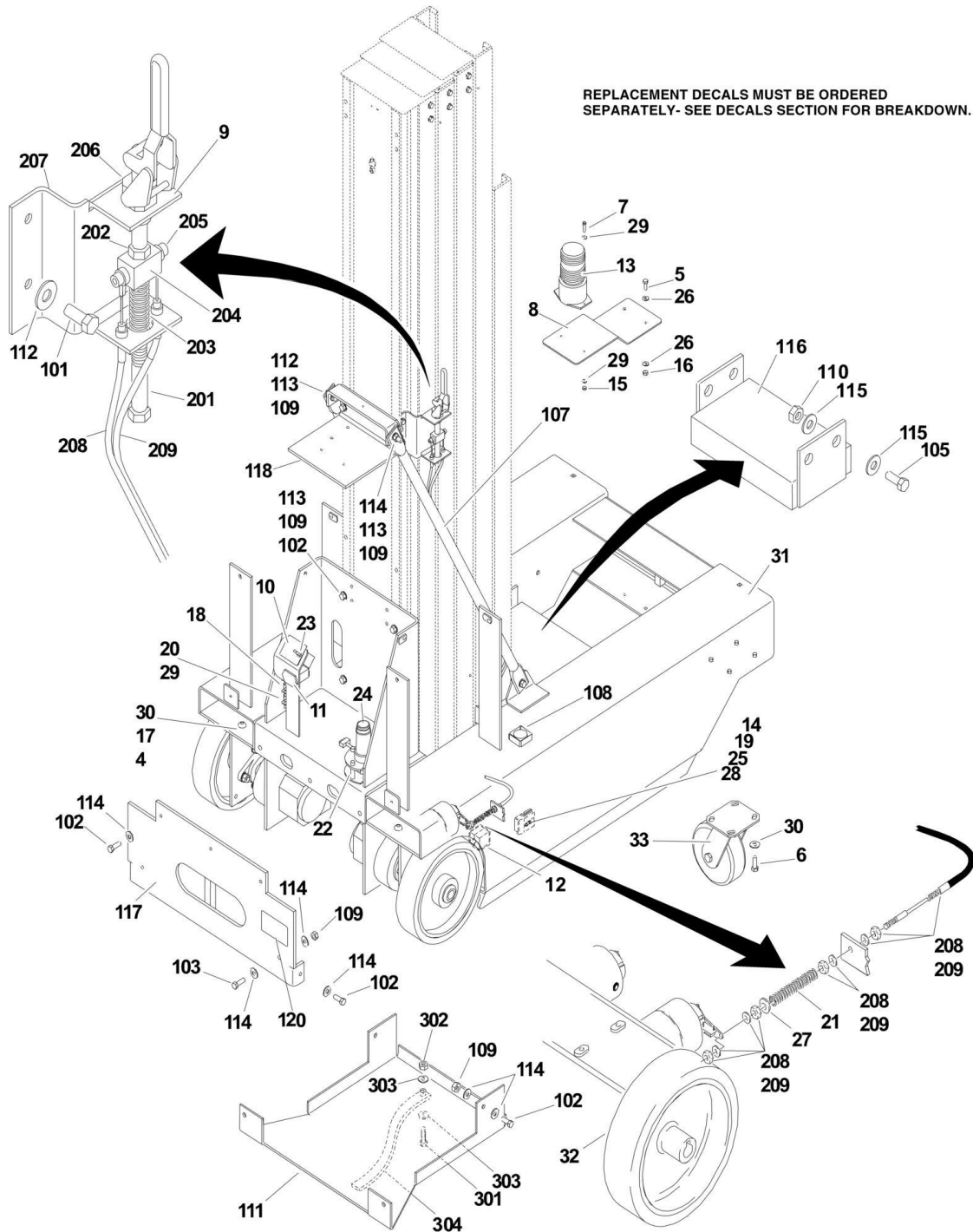
TABLE OF CONTENTS

SECTION 1 - BASE.....	7
FIGURE 1-1. BASE MOUNTED COMPONENTS INSTALLATION	8
FIGURE 1-2. REAR DRIVE ASSEMBLY	12
FIGURE 1-3. DRIVE MOTOR ASSEMBLY	16
FIGURE 1-4. JLG POTHOLE PROTECTION INSTALLATION	18
SECTION 2 - CONTROLS	21
FIGURE 2-1. GROUND CONTROL/POWER PACK INSTALLATION	22
FIGURE 2-2. PLATFORM CONTROLS AND CABLES INSTALLATIONS	26
FIGURE 2-3. BATTERY CHARGER ASSEMBLY	28
FIGURE 2-4. PUMP/MOTOR/TANK ASSEMBLY.....	30
FIGURE 2-5. CONTROL BOX ASSEMBLY.....	32
SECTION 3 - MAST	35
FIGURE 3-1. MAST ASSEMBLY - 15VPSP	36
FIGURE 3-2. MAST MOUNTING COMPONENTS	40
SECTION 4 - PLATFORM.....	43
FIGURE 4-1. PLATFORM INSTALLATION (FOLD DOWN SIDE RAILS)	44
FIGURE 4-2. PLATFORM INSTALLATION (FIXED SIDE RAILS)	48
FIGURE 4-3. PLATFORM INSTALLATION (QUICK CHANGE GULLWING)	50
FIGURE 4-4. PLATFORM INSTALLATION (QUICK CHANGE MOLDED).....	54
SECTION 5 - CYLINDER	57
FIGURE 5-1. LIFT CYLINDER ASSEMBLY	58
SECTION 6 - HYDRAULIC	61
FIGURE 6-1. HYDRAULIC DIAGRAM.....	62
FIGURE 6-2. HYDRAULIC DIAGRAM (SN 03620 to Present)	64
SECTION 7 - ELECTRICAL	67
FIGURE 7-1. ELECTRICAL SCHEMATIC (Prior to SN 03620)	68
FIGURE 7-2. ELECTRICAL SCHEMATIC (SN 03620 to Present)	70
FIGURE 7-3. ELECTRICAL COMPONENTS INSTALLATION	72
SECTION 8 - DECALS.....	77
FIGURE 8-1. DECALS INSTALLATION	78
SECTION 9 - RECOMMENDED SERVICE PARTS STOCK	81
FIGURE 9-1. VPSP SERIES STANDARD PARTS.....	82
SECTION 10 - SPECIAL OPTIONS.....	85
FIGURE 10-1. SPECIAL OPTIONS.....	86
PART NUMBER INDEX	87

SECTION 1 - BASE

SECTION 1 - BASE

FIGURE 1-1. BASE MOUNTED COMPONENTS INSTALLATION



SECTION 1 - BASE

FIGURE 1-1. BASE MOUNTED COMPONENTS INSTALLATION

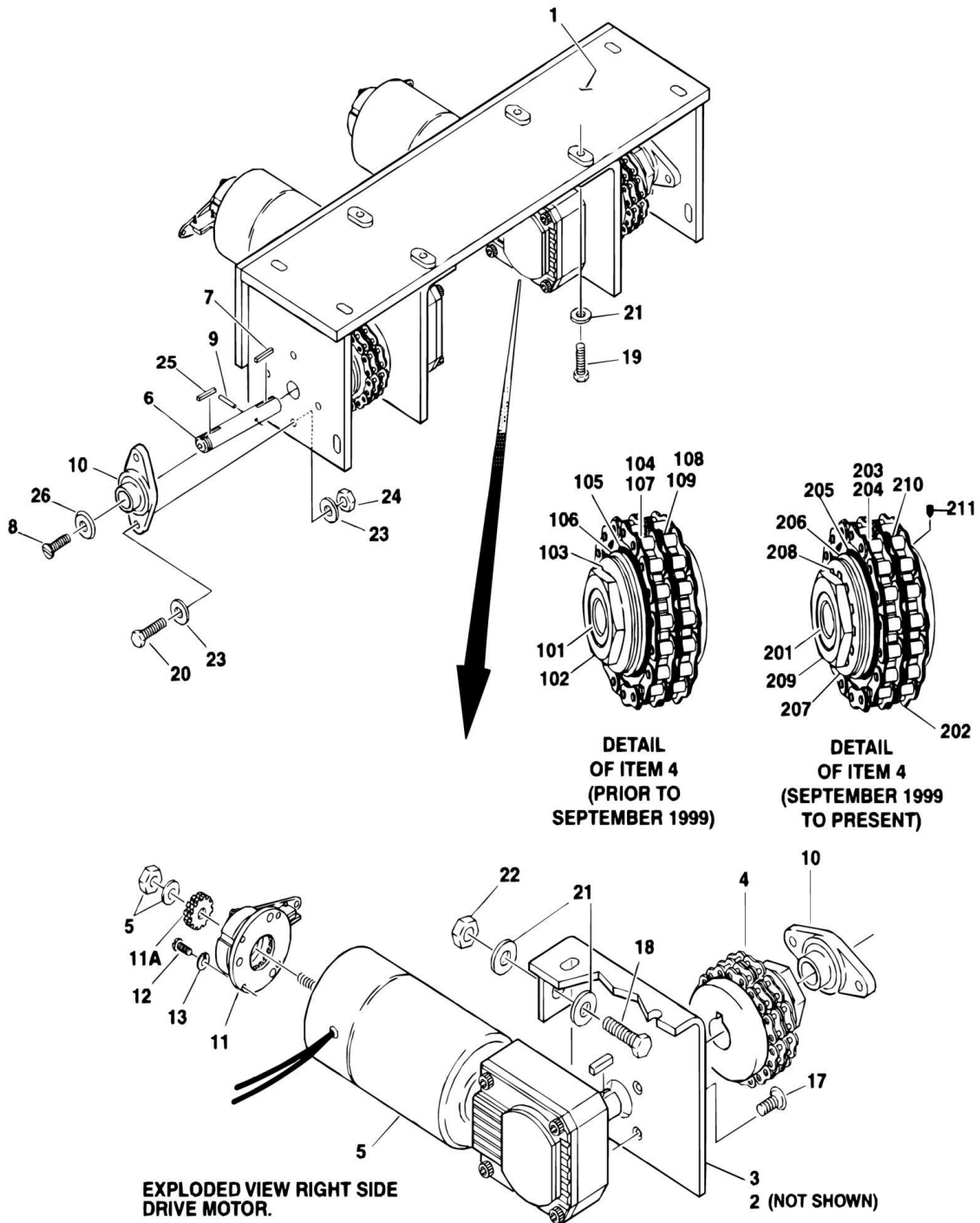
ITEM	PART NUMBER	QTY	DESCRIPTION	REV
		Ref	BASE ASSEMBLY	
	0270535	Ref	Base Assembly 15VPSP	A
1	0100011	AR	Loctite #242 (Not Shown)	
4	0630446	4	Bolt 3/8in-16NC x 1in (Carriage)	
5	0641406	2	Bolt 1/4in-20NC x 3/4in	
6	0641609	8	Bolt 3/8in-16NC x 1 1/8in	
7	0721008	2	Screw	
8	0902583	1	Bracket, Beacon	
9	1060658	1	Cable, Brake Assembly (See Items for 201-211 Breakdown)	
10	1702923	1	Decal - Manual Descent	
11	2420165	1	Gauge, Hour Meter	
12	2820085	2	Insulate, Ferrite Bead	
13	2920146	1	Lamp, Beacon Assembly	
13	7016319	1	Tube, Flash	
13	7016372	1	Lens, Amber	
14	3310601	8	Locknut #6-32NC	
15	3311005	2	Locknut #10-24NC	
16	3311405	2	Locknut 1/4in-20NC	
17	3311605	4	Locknut 3/8in-16NC	
18	3740069	3	Relay, Power 24VDC	
19	3910620	4	Screw #6-32NC x 1 1/4in	
20	3911010	3	Screw	
21	4160164	2	Spring, Compression	
22	4300106	4	Stud, Grooved	
23	4360314	1	Switch, Toggle	
24	4360465	1	Switch, Tilt	
25	4460648	2	Receptacle - 2 Position	
26	4711400	4	Flatwasher 1/4in Narrow	
27	4740430	2	Washer, Fender	
28	4750600	8	Flatwasher #6	
29	4751000	7	Flatwasher #10 Wide	
30	4751600	12	Flatwasher 3/8in Wide	
31	4846087	1	Base Weldment	
32	4860175	2	Wheel, Rear Assembly	
32	7019659	2	Steel Insert (1 Per Assembly)	
33	4860177	2	Wheel, Caster Assembly	
33	7019660	2	Axle 1/2in x 3 1/4in (1 Per Assembly)	
33	7019661	2	Wheel, Replacement (1 Per Assembly)	
33	7019662	2	Caster without Wheel (1 Per Assembly)	
33	7019663	2	Bearing, Wheel (1 Per Assembly)	
		Ref	MAST SUPPORT INSTALLATIONS	
	0259527	Ref	Mast Support Installations (Prior to SN 03620)	C
	0271465	Ref	Mast Support Installations (SN 03620 to Present)	A
101	0641406	2	Bolt 1/4in-20NC x 3/4in	
102	0641608	20	Bolt 3/8-16NC x 1in	
103	0641609	2	Bolt 3/8in-16NC x 1 1/8in	
104	0641612	1	Bolt 3/8in-16NC x 1 1/2in	
105	0641810	4	Bolt 1/2in-13NC x 1 1/4in	
107	0880139	2	Brace, Mast	
108	2420140	1	Gauge, Level (Prior to SN 03620)	

SECTION 1 - BASE

ITEM	PART NUMBER	QTY	DESCRIPTION	REV
109	3311605	18	Locknut 3/8in-16NC	
110	3311805	4	Locknut 1/2in-13NC	
111	3570172	1	Cover, Drive Motors	
112	4711400	2	Flatwasher 1/4in Narrow	
113	4711600	28	Flatwasher 3/8in Narrow	
114	4751600	13	Flatwasher 3/8in Wide	
115	4751800	8	Flatwasher 1/2in Wide	
116	4845291	1	Weldment, Counterweight	
117	4845474	1	Weldment, Rear Plate	
118	4846173	1	Weldment, Ground Control	
119	4240033	2	Wire, Tie (Not Shown)	
120	1704582	1	Decal - Manual Descent (SN 03620 to Present)	
	1060658	Ref	Brake cable assembly	3-C
201	0641528	1	Bolt 5/16in-18NC x 3 1/2in	
202	3311501	1	Nut 5/16in-18NC	
203	4160166	1	Spring, Compression	
204	0561284	1	Bar, Aluminum	
205	3900248	2	Bolt 1/4in-20NC x 1/4in	
206	2560150	1	Handle, Brake Cable	
207	3570382	1	Bracket, Brake Cable	
208	1060661	1	Cable, Brake	
209	1060662	1	Cable, Brake	
210	0100019	AR	Loctite #271 (Not Shown)	
211	0100035	AR	Loctite #222 (Not Shown)	
	0270352	Ref	STATIC STRAP INSTALLATION	A
301	0641608	1	Bolt 3/8in-16NC x 1in	
302	3311605	1	Nut 3/8in-16NC	
303	4751600	2	Flatwasher 3/8in	
304	4240084	1	Strap, Static	

SECTION 1 - BASE

FIGURE 1-2. REAR DRIVE ASSEMBLY



SECTION 1 - BASE

FIGURE 1-2. REAR DRIVE ASSEMBLY

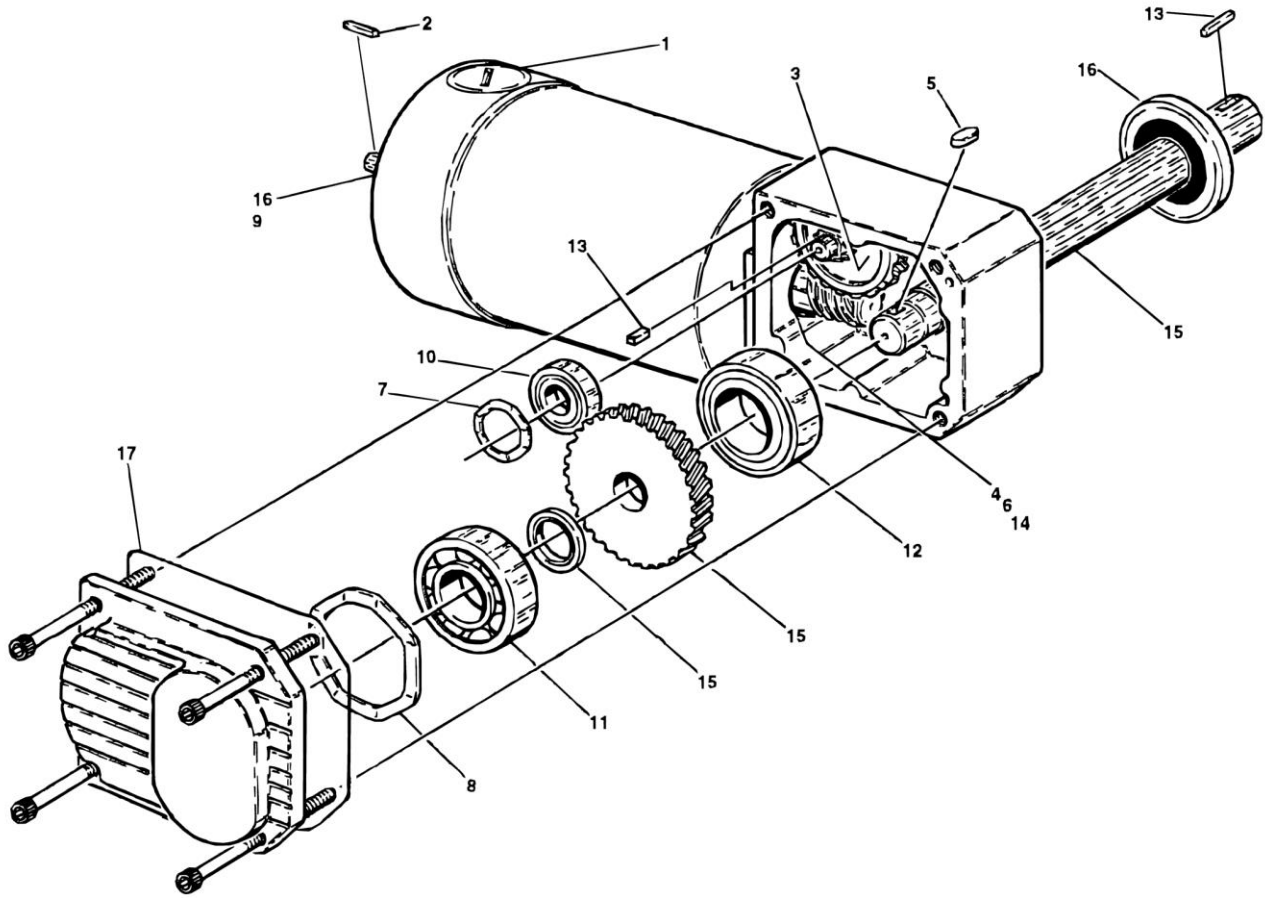
ITEM	PART NUMBER	QTY	DESCRIPTION	REV
	0258718	Ref	REAR DRIVE ASSEMBLY	1-B
1	4845473	1	Weldment, Drive	
2	3570168	1	Plate, Motor Mount (Left)	
3	3570169	1	Plate, Motor Mount (Right)	
4	1400126	2	Clutch, Torque Limiting Options:	
4		Ref	Dalton Brand Clutch, Torque Limiting (See Items 101-109 for Breakdown) (Prior to September 1999)	
4		Ref	EPT Brand Clutch, Torque Limiting (See Items 201-211 for Breakdown) (September 1999 to Present)	
5	3160234	2	Wheel Drive Motor Assembly (See DRIVE MOTOR ASSEMBLY for Breakdown)	
6	4040268	2	Shaft, Drive	
7	2860027	2	Key, Clutch	
8	0741609	2	Bolt 3/8in-16NC x 1 1/8in	
9	3440520	2	Pin, Roll	
10	0440221	4	Bearing, Flange	
11	0256851	2	Brake Assembly	
11	7014117	2	Switch, Micro (1 Per Assembly)	
11	7014118	2	Disc, Friction (1 Per Assembly)	
11A	7014119	2	Gear (1 Per Assembly)	
11A	7014120	4	Setscrew (2 Per Assembly)	
12	3930808	8	Bolt #8-32NC x 1/2in	
13	4750800	8	Flatwasher #8	
14	0100035	AR	Loctite #222 (Not Shown)	
15	0100011	AR	Loctite #242 (Not Shown)	
16	0100019	AR	Loctite #272 (Not Shown)	
17	3900221	6	Bolt 5/16in-18NC x 3/4in	
18	0641610	2	Bolt 3/8in-16NC x 1 1/4in	
19	0641609	4	Bolt 3/8in-16NC x 1 1/8in	
20	0641711	8	Bolt 7/16in-14NC x 1 3/8in	
21	4751600	8	Flatwasher 3/8in	
22	3311605	2	Locknut 3/8in-16NC	
23	4711700	16	Flatwasher 7/16in	
24	3311705	8	Locknut 7/16in-14NC	
25	2860029	2	Key, Wheel	
26	4740478	2	Washer, Wheel Retainer	
	1400126	Ref	TORQUE LIMITER CLUTCH ASSEMBLY (DALTON BRAND) (PRIOR TO SEPTEMBER 1999)	A
101	7016689	1	Hub	
102	7016683	1	Nut, Adjusting	
103	7016684	1	Spring	
104	7016685	1	Bearing	
105	7016691	2	Facing, Friction	
106	7016690	1	Plate, Pressure	
107	7016686	1	Sprocket	
108	7016687	1	Coupling, Chain	
109	7016688	1	Sprocket	
	1400126	Ref	TORQUE LIMITER CLUTCH ASSEMBLY (EPT BRAND) (SEPTEMBER 1999 TO PRESENT)	C
201	7023351	1	Hub	
202	7023352	1	Chain	

SECTION 1 - BASE

ITEM	PART NUMBER	QTY	DESCRIPTION	REV
203	7023353	1	Sprocket	
204	7023354	1	Bushing	
205	7023355	2	Facing, Friction	
206	7023356	1	Plate, Pressure	
207	7023357	3	Disc, Spring	
208	7023358	1	Lockwasher, Tabbed	
209	7023359	1	Nut, Adjusting	
210	7023360	1	Sprocket	
211	7023361	1	Setscrew	

SECTION 1 - BASE

FIGURE 1-3. DRIVE MOTOR ASSEMBLY



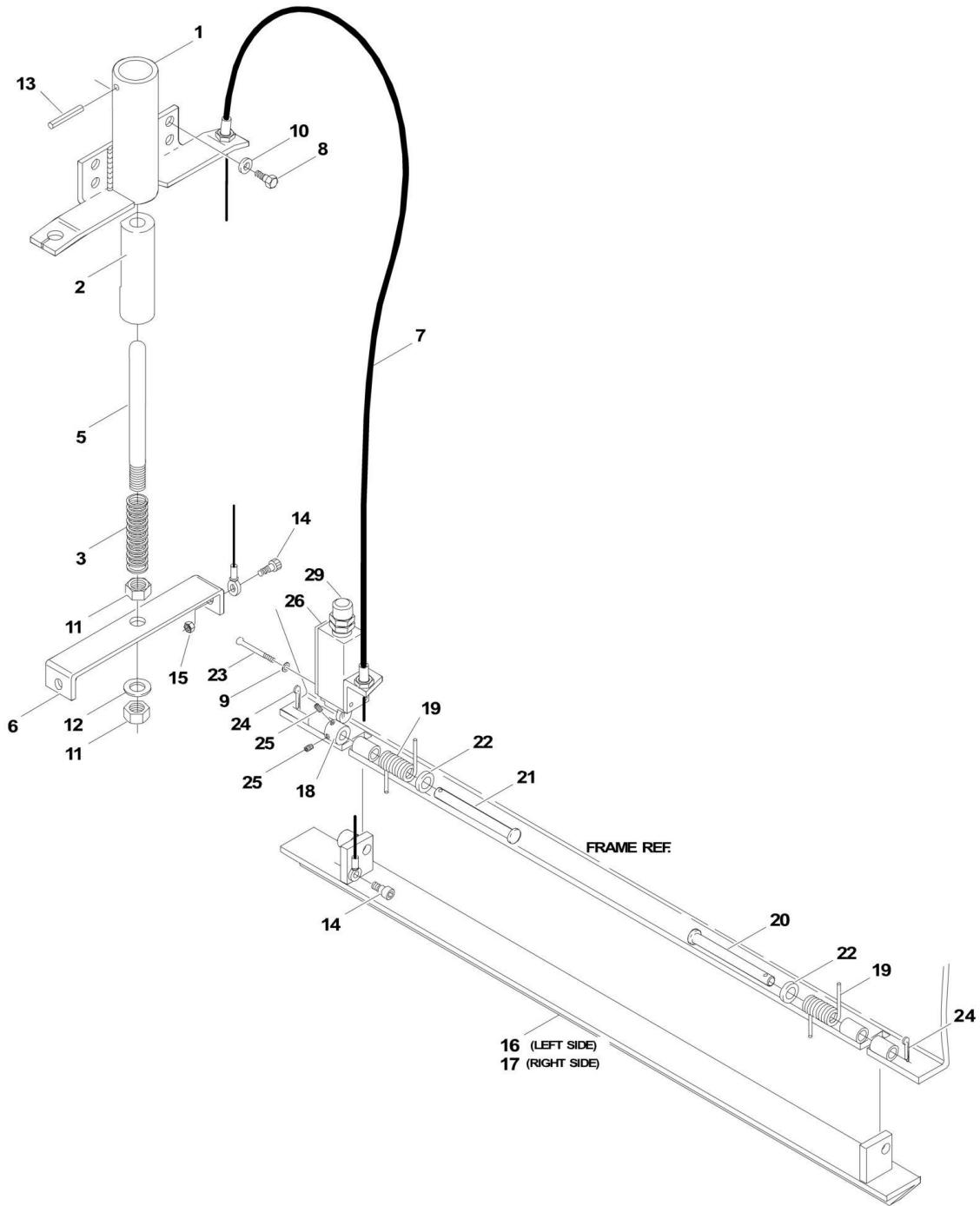
1-10

FIGURE 1-3. DRIVE MOTOR ASSEMBLY

ITEM	PART NUMBER	QTY	DESCRIPTION	REV
	3160234	Ref	DRIVE MOTOR ASSEMBLY	B
1	7018000	1	Brush Kit	
2	7018001	1	Key, Shaft	
3	7018002	1	Gear and Pinion Assembly	
4	7018005	1	Ring, Retaining	
5	7018007	1	Key, Shaft	
6	7018008	1	Bearing	
7	7018009	1	Washer, Wave	
8	7018010	1	Washer, Wave	
9	7018011	1	Washer, Wave	
10	7018012	2	Bearing 32mm x 12mm x 10mm	
11	7018013	1	Bearing 47mm x 20mm x 14mm	
12	7018014	1	Bearing 47mm x 25mm x 12mm	
13	7018015	1	Shaft, Key	
14	7018018	2	Seal, Lip	
15	7018019	1	Gear and Drive Shaft	
16	7018027	1	Bearing	
17	7018028	1	O-Ring	

SECTION 1 - BASE

FIGURE 1-4. JLG POTHOLE PROTECTION INSTALLATION



SECTION 1 - BASE

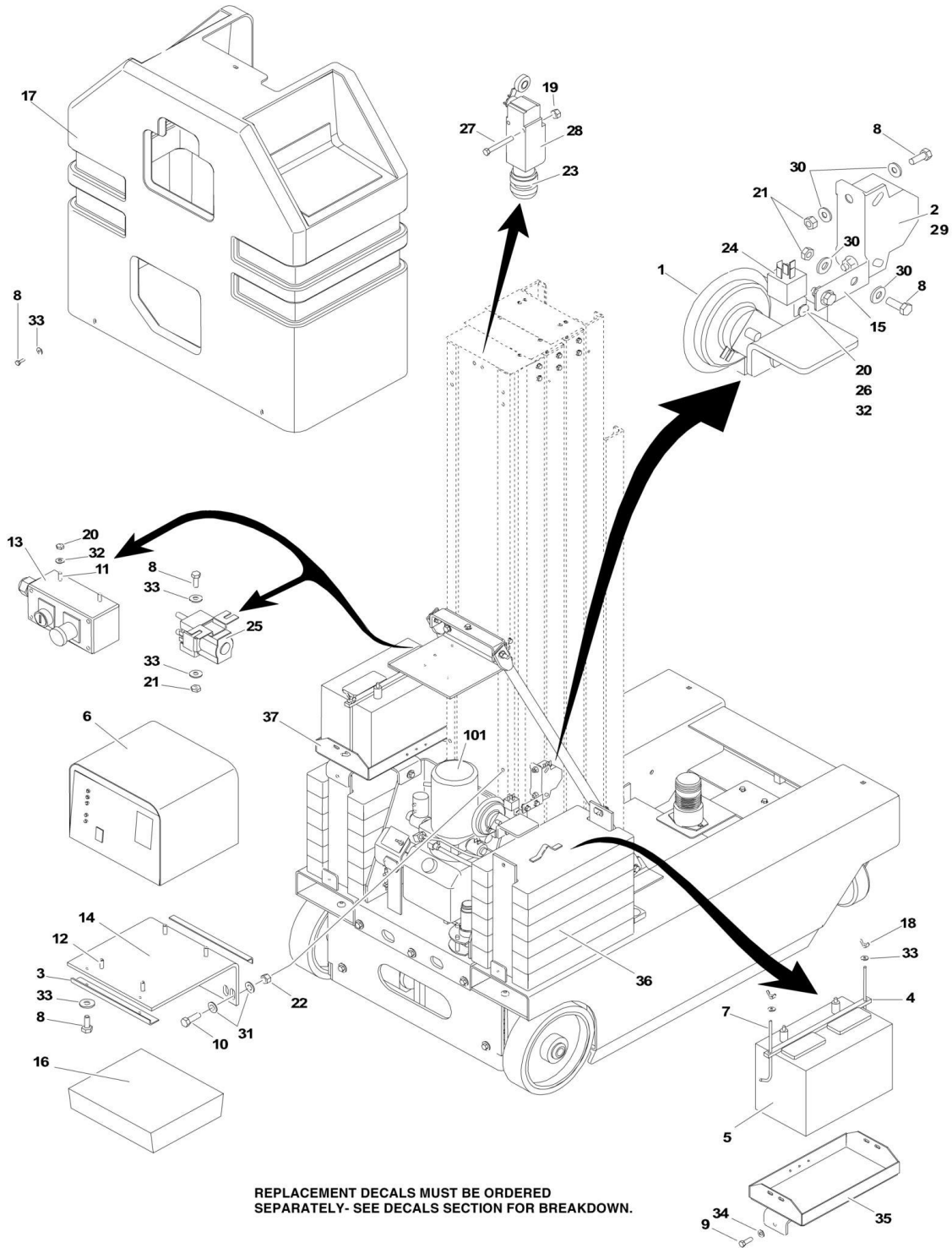
FIGURE 1-4. JLG POTHOLE PROTECTION INSTALLATION

ITEM	PART NUMBER	QTY	DESCRIPTION	REV
	0257490	Ref	JLG POTHOLE PROTECTION INSTALLATION	2-B
1	4845507	1	Actuator Weldment	
2	4567203	1	Tube, Sleeve	
3	4160160	1	Spring, Compression	
4	3020022	AR	Grease, Lithium (with PTFE) (Not Shown)	
5	3841343	1	Rod, Actuator	
6	3570230	1	Plate, Cable Attach	
7	1060649	2	Cable	
8	0641405	4	Bolt 1/4in-20NC x 5/8in	
9	4750600	4	Flatwasher #6	
10	4711400	4	Flatwasher 1/4in Narrow	
11	3312002	2	Nut, Jam 5/8in-11NC	
12	4712000	1	Flatwasher 5/8in Narrow	
13	3440418	1	Rollpin 1/8in 1 1/8in	
14	3900202	4	Screw, Shoulder 1/4in-20NC x 1/4in	
15	3311005	2	Locknut #10-24NC	
16	4845508	1	Bar, Pothole (Left Side)	
17	4845509	1	Bar, Pothole (Right Side)	
18	1100103	2	Cam	
19	4160162	4	Spring, Torsion	
20	3430630	2	Pin, Clevis 3/8in x 3 3/4in	
21	3430638	2	Pin, Clevis 3/8in x 4 3/4in	
22	4751600	4	Flatwasher 3/8in	
23	3910620	4	Screw #6-32NC x 1 1/4in	
24	3450403	4	Pin, Cotter 1/8in x 3/4in	
25	3900249	4	Setscrew #10-32NC x 3/16in	
26	4360456	2	Switch, Limit	
27	0100035	AR	Loctite #222 (Not Shown)	
28	0100011	AR	Loctite #242 (Not Shown)	
29	4460662	2	Connector, Strain Relief	

SECTION 2 - CONTROLS

SECTION 2 - CONTROLS

FIGURE 2-1. GROUND CONTROL/POWER PACK INSTALLATION



SECTION 2 - CONTROLS

FIGURE 2-1. GROUND CONTROL/POWER PACK INSTALLATION

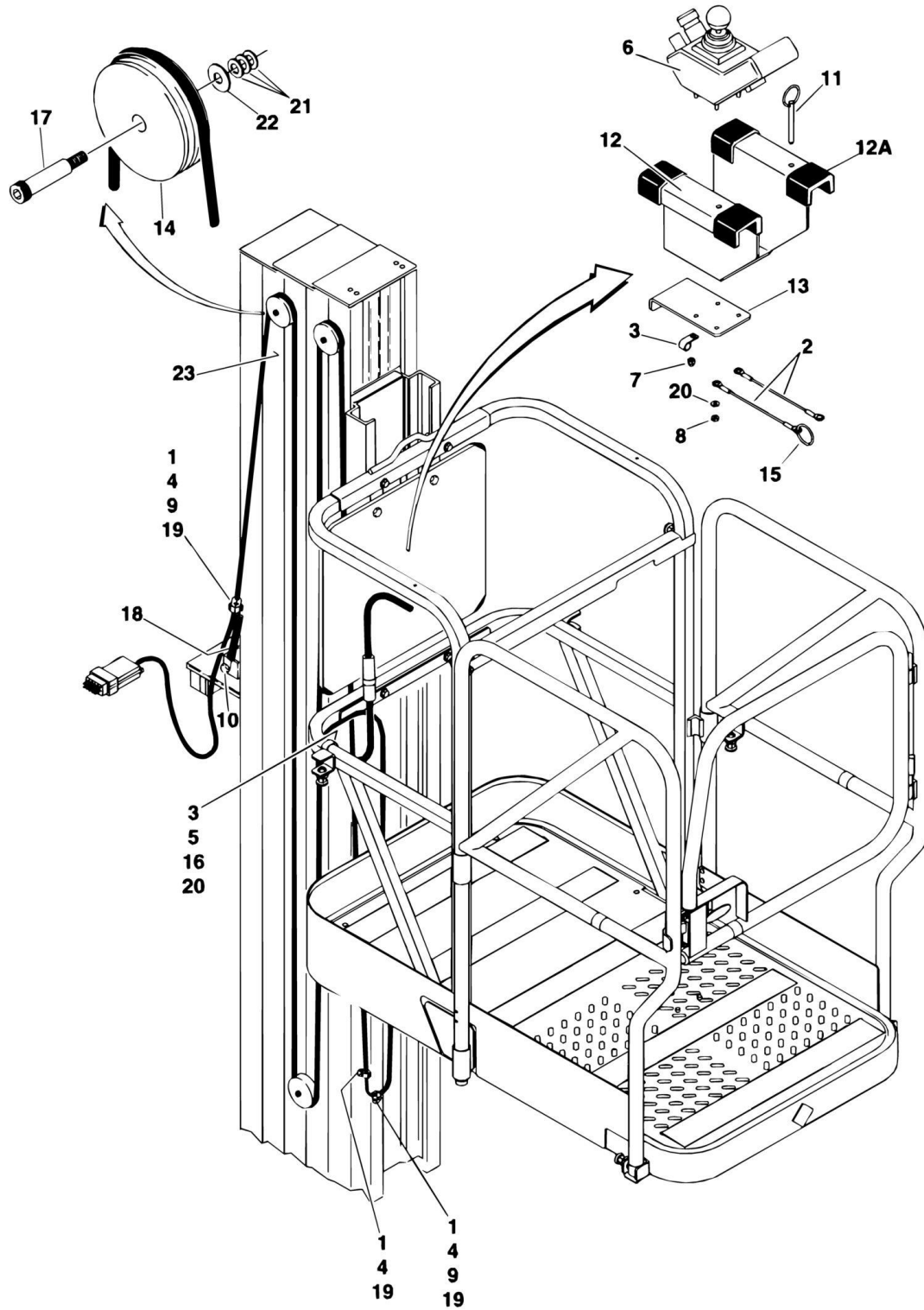
ITEM	PART NUMBER	QTY	DESCRIPTION	REV
	0259528	Ref	GROUND CONTROL/POWER PACK INSTALLATION	D
1	0140022	1	Alarm, Horn	
2	0140033	1	Alarm	
3	0181857	1	Angle, Controller Mount	
4	0362658	2	Bar, Battery Hold Down	
5	0400122	2	Battery	
6	0400164	1	Charger, Battery 120VAC (See BATTERY CHARGER ASSEMBLY for Breakdown)	
7	0630504	4	Bolt, Battery Hold Down	
8	0641406	13	Bolt 1/4in-20NC x 3/4in	
9	0641508	6	Bolt 5/16in-18NC x 1in	
10	0641609	2	Bolt 3/8in-16NC x 1 1/8in	
11	0721006	2	Screw	
12	0741407	4	Bolt 1/4in-20NC x 7/8in	
13	0861330	1	Ground Control Box	
13	7020094	1	Lid	
13	4360469	1	Switch, Key	
13	2860030	1	Key, Replacement	
13	7020078	1	Switch, Push-Pull (Stop)	
13	7020093	4	Screw m3 x 25	
13	7020097	1	Legend Plate, "Power/Off/On"	
13	7020096	1	Legend Plate, "Stop"	
13	4460633	1	Connector, Strain Relief	
14	0902250	1	Bracket, Charger/Controller	
15	0902356	1	Bracket, Alarm	
16	1600305	1	Controller	
17	2680483	1	Hood	
17A	2700080	2	Hook	
18	3300202	4	Wingnut	
19	3311001	2	Nut #10-24NC	
20	3311005	3	Locknut #10-24NC	
21	3311405	6	Locknut 1/4in-20NC	
22	3311605	2	Locknut 3/8in-16NC	
23	3520166	1	Plug	
24	3740069	1	Relay, Power 24VDC	
25	3740130	1	Relay, 100Amp	
26	3911010	1	Screw	
27	3911024	2	Screw	
28	4360437	1	Switch, Limit	
29	4460685	4	Terminal, Stud Mount Tab	
30	4711400	8	Flatwasher 1/4in Narrow	
31	4711600	4	Flatwasher 3/8in Narrow	
32	4751000	6	Flatwasher #10 Wide	
33	4751400	15	Flatwasher 1/4in Wide	
34	4751500	6	Flatwasher 5/16in Wide	
35	4845875	1	Weldment, Battery Box (Left)	
36	4845876	2	Weldment, Counterweight	
37	4845878	1	Weldment, Battery Box (Right)	
		Ref	POWER PACK INSTALLATIONS	
	0259774	Ref	Power Pack Installations (Prior to SN 03620)	A

SECTION 2 - CONTROLS

ITEM	PART NUMBER	QTY	DESCRIPTION	REV
	0271466	Ref	Power Pack Installations (SN 03620 to Present)	A
101	3600254	1	Pump/Motor 24VDC (See PUMP/MOTOR/TANK ASSEMBLY for Breakdown)	
101	0641606	4	Bolt 3/8in-16NC x 3/4in	
101	0741605	2	Bolt 3/8in-16NC x 5/8in	
101	4751600	4	Flatwasher 3/8in Wide	

SECTION 2 - CONTROLS

FIGURE 2-2. PLATFORM CONTROLS AND CABLES INSTALLATIONS



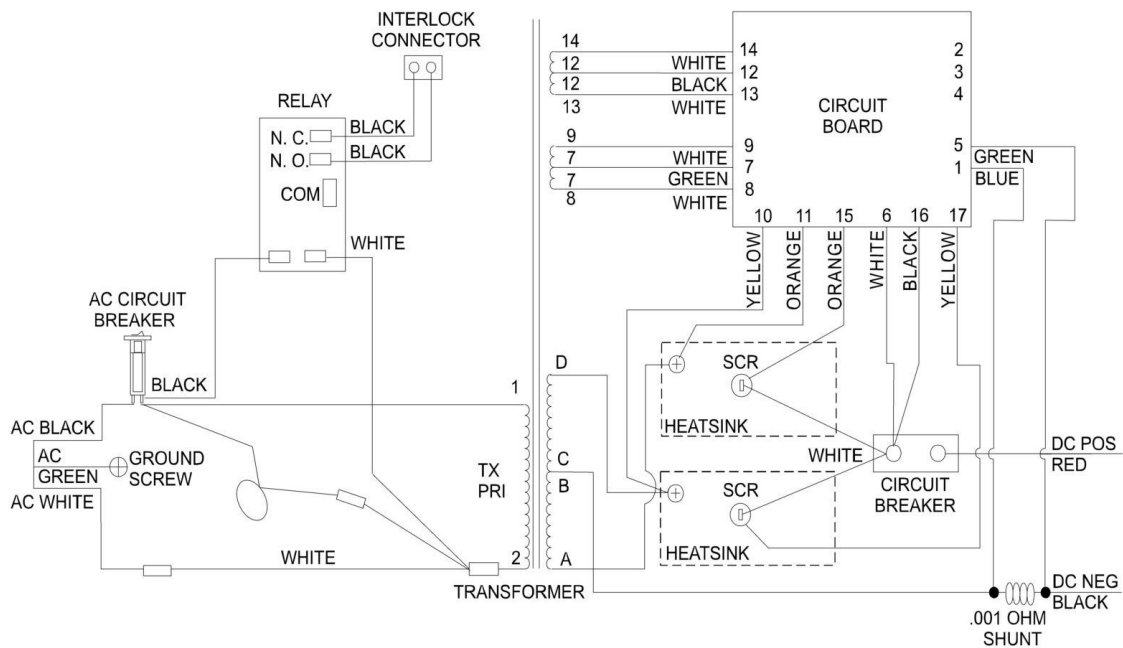
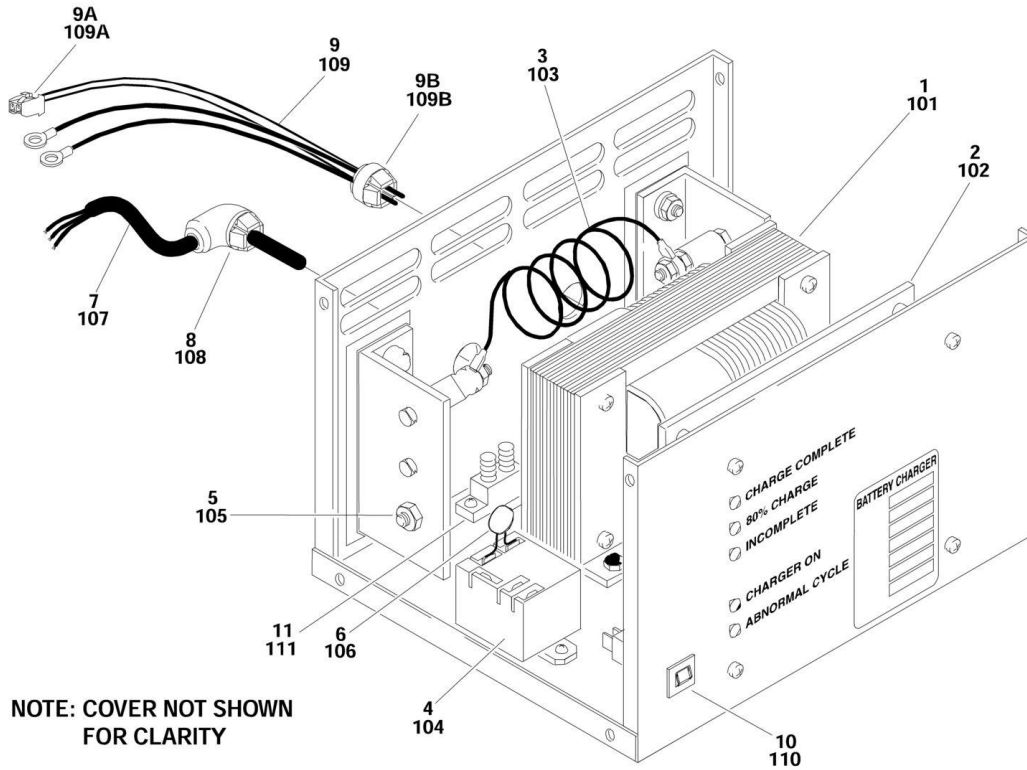
SECTION 2 - CONTROLS

FIGURE 2-2. PLATFORM CONTROLS AND CABLES INSTALLATIONS

ITEM	PART NUMBER	QTY	DESCRIPTION	REV
		Ref	PLATFORM CONTROLS AND CABLES INSTALLATIONS	
	0259769	Ref	Platform Controls and Cables Installations 15 VPSP	B
1	0641410	3	Bolt 1/4in-20NC x 1 1/4in	
2	1060380	2	Cable, Lanyard	
3	1320043	2	Clamp, Cable	
4	1320149	3	Clamp, Hose	
5	1380132	1	Clip, Gripper	
6	1600304	1	Controller, Joystick	
7	3300417	4	Nut, Acorn #8-32NC	
8	3310801	8	Nut #8-32NC	
9	3311405	2	Locknut 1/4in-20NC	
10	3311605	1	Locknut 3/8in-16NC	
11	3422657	1	Pin, Quick Release	
12	3570680	1	Bracket, Joystick	
12A		Ref	Pad, Rubber Options:	
12A	7020075	2	RH Side Pad	
12A	7020076	2	LH Side Pad	
13	3570737	1	Bracket, Joystick	
14	3580231	3	Pulley, Sheave	
15	3760170	1	Ring, Split	
16	3820024	1	Rivet	
17	3900200	3	Screw, Shoulder	
18	4160130	1	Spring, Extension	
19	4711400	5	Flatwasher 1/4in Narrow	
20	4750800	5	Flatwasher #8 Wide	
21	4751000	12	Flatwasher #10 Wide	
22	4751500	3	Flatwasher 5/16in Wide	
23	4922203	1	Harness, Platform Control	

SECTION 2 - CONTROLS

FIGURE 2-3. BATTERY CHARGER ASSEMBLY



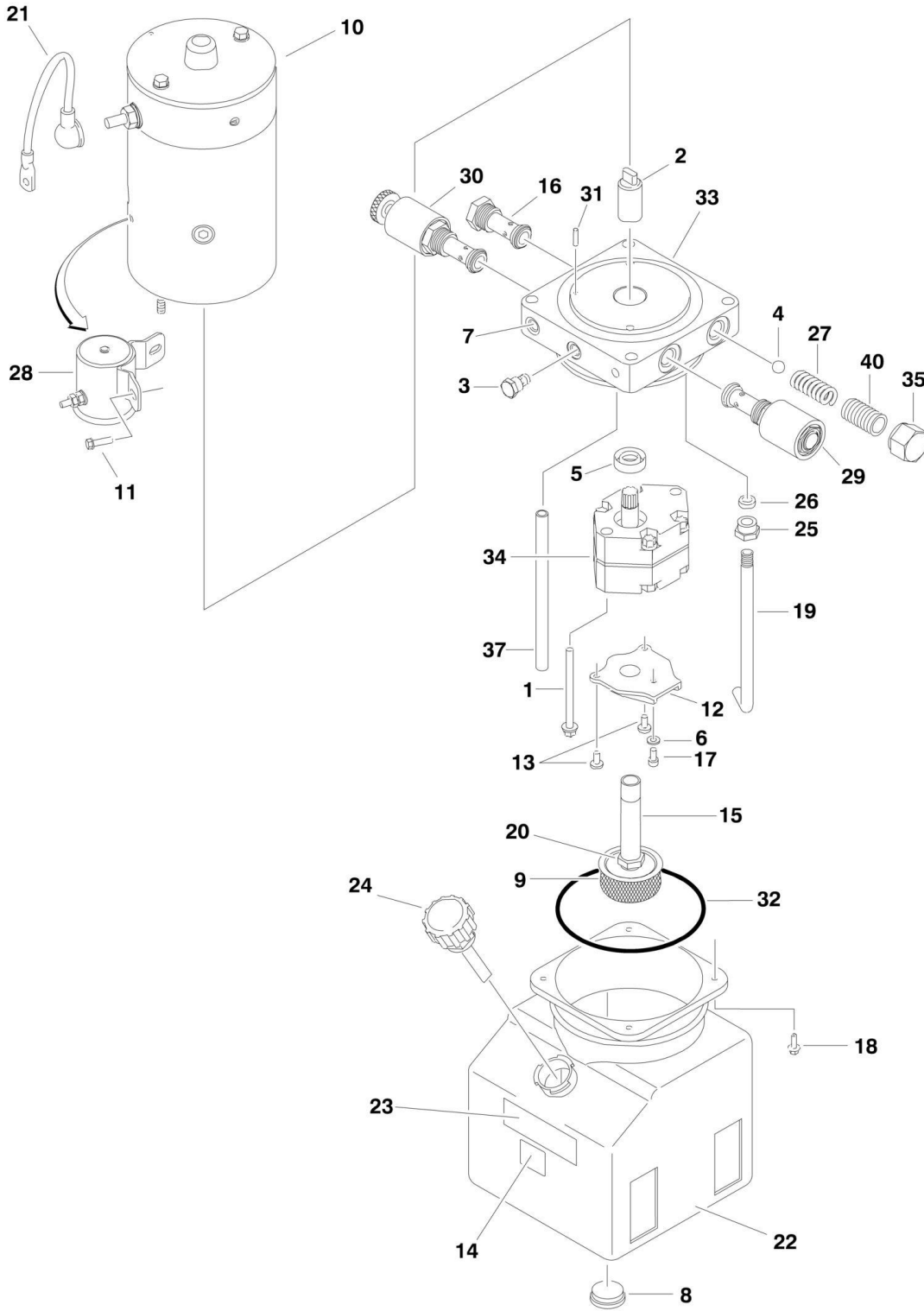
SECTION 2 - CONTROLS

FIGURE 2-3. BATTERY CHARGER ASSEMBLY

ITEM	PART NUMBER	QTY	DESCRIPTION	REV
		Ref	BATTERY CHARGER ASSEMBLIES	
	0400157	Ref	120/240 VOLT/50HZ	B
1	7020620	1	Transformer (was p/n 7018551)	
2	7018562	1	Card, Circuit	
3	7018554	1	Shunt Assembly	
4	7018564	1	Relay, Interlock	
5	7018555	2	SCR Rectifier	
6	7018589	1	Varistor (was p/n 7018537)	
7	7018556	1	AC Cord Assembly	
8	7011528	1	Connector, Strain Relief - 90	
9	7018567	1	DC Harness Assembly	
9A	4460424	1	Connector, Male - 2 Position	
9A	4460267	2	Pin, Male	
9B	7011528	1	Connector, Strain Relief	
10	7018557	2	Breaker, Circuit - AC	
11	7011509	1	Breaker, Circuit - DC	
12	7018586	2	Switch, Selector	
13	7011649	1	Relay (Not Shown)	
	0400166	Ref	240 VOLT/50HZ	B
101	7018551	1	Transformer	
102	7018562	1	Card, Circuit	
103	7018554	1	Shunt Assembly	
104	7018563	1	Relay, Interlock	
105	7018555	2	SCR Rectifier	
106	7018537	1	Varistor	
107	7018556	1	AC Cord Assembly	
108	7011528	1	Connector, Strain Relief - 90	
109	7018567	1	DC Harness Assembly	
109A	4460424	1	Connector, Male - 2 Position	
109A	4460267	2	Pin, Male	
109B	7011528	1	Connector, Strain Relief	
110	7018557	1	Breaker, Circuit - AC	
111	7011509	1	Breaker, Circuit - DC	

SECTION 2 - CONTROLS

FIGURE 2-4. PUMP/MOTOR/TANK ASSEMBLY



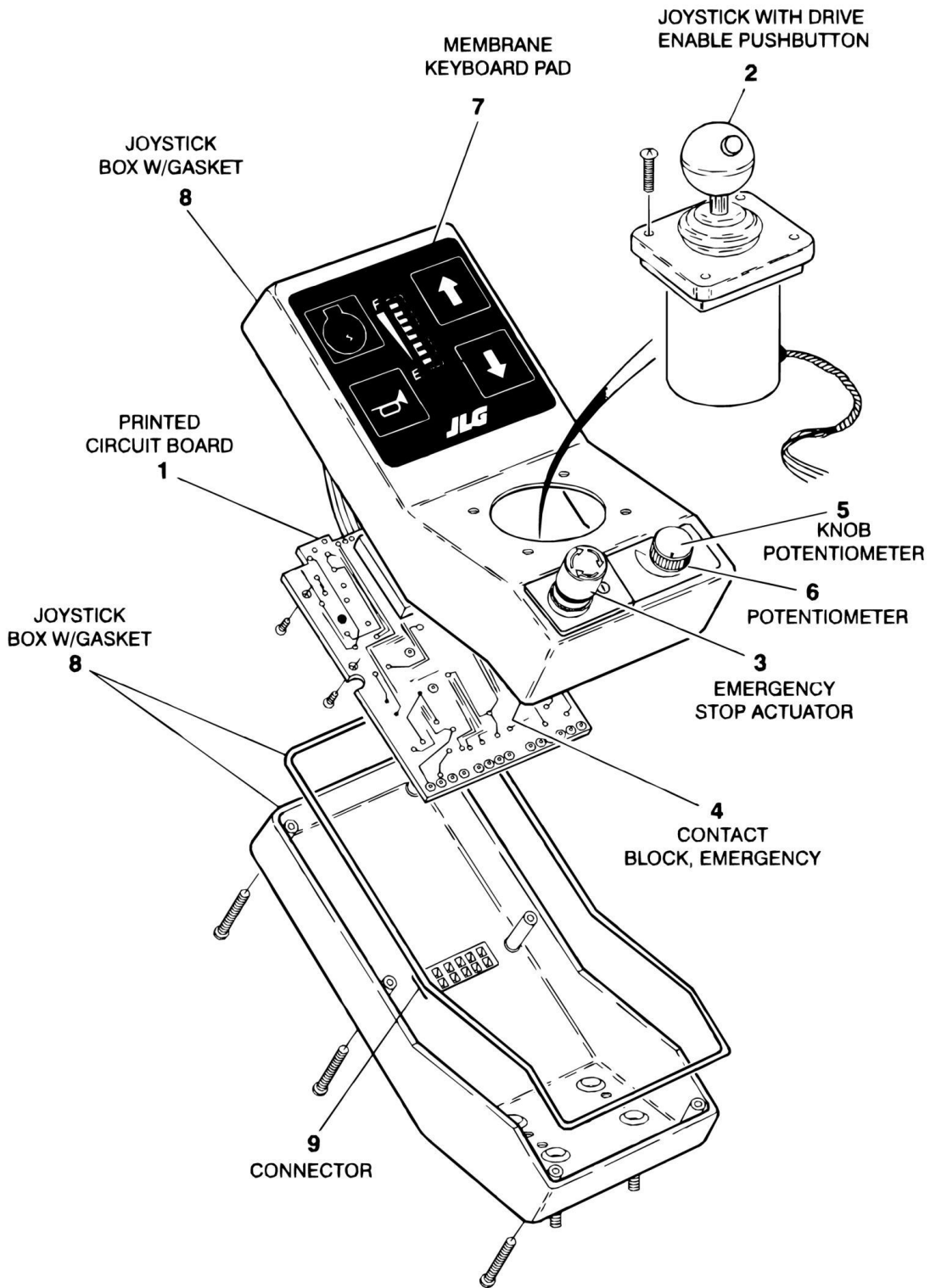
SECTION 2 - CONTROLS

FIGURE 2-4. PUMP/MOTOR/TANK ASSEMBLY

ITEM	PART NUMBER	QTY	DESCRIPTION	REV
	3600254	Ref	PUMP/MOTOR/TANK ASSEMBLY	C
1	7013713	2	Bolt 5/16in-24NF x 2 3/4in	
2	7016735	1	Coupling	
3	7013714	1	Plug	
4	7013715	1	Ball	
5	7013716	1	Seal, Shaft	
6	7013717	1	Washer	
7	Not Serviced	1	Plug, Shipping	
8	7013722	1	Magnet	
9	7013723	1	Filter - 149 Micron	
10	7016710	1	Motor	
10	7016718	1	Brush Kit	
11	7013758	2	Screw 1/4in-20NC	
12	7013727	1	Cover	
13	7013728	2	Screw M6 x 1	
14	Not Serviced	1	Nameplate - Serial Number	
15	7016719	1	Pipe, PCV	
16	7013708	1	Valve, Check Cartridge	
17	7016720	1	Bolt 5/16in-18NC x 1in	
18	7016721	4	Bolt #12-24NC x 1/2in	
19	7013791	1	Tube, Return	
20	7016722	1	Nut 3/8in	
21	7013759	1	Cable, Electrical	
22	7016712	1	Tank, Plastic	
23	7016713	1	Decal - Tank Fill Line	
24	7016714	1	Breather	
25	7013792	1	Nut, Compression	
26	7013793	1	Sleeve, Compression	
27	7013733	1	Spring	
28	7016711	1	Solenoid, Start	
29	7022205	1	Valve, Solenoid Cartridge	
29	7022206	1	Coil	
30	7016723	1	Valve, Manual Override Cartridge	
31	7013766	1	Pin	
32	7013743	1	O-Ring	
33	Not Serviced	1	Endhead	
34	7017717	1	Pump Assembly	
34	7013701	1	Seal Kit - Pump	
35	7013750	1	Cap	
36	7013720	2	Plug 1/16in	
37	7016724	1	Tube	
40	7013770	1	Valve, Screw Adjustment	

SECTION 2 - CONTROLS

FIGURE 2-5. CONTROL BOX ASSEMBLY



SECTION 2 - CONTROLS

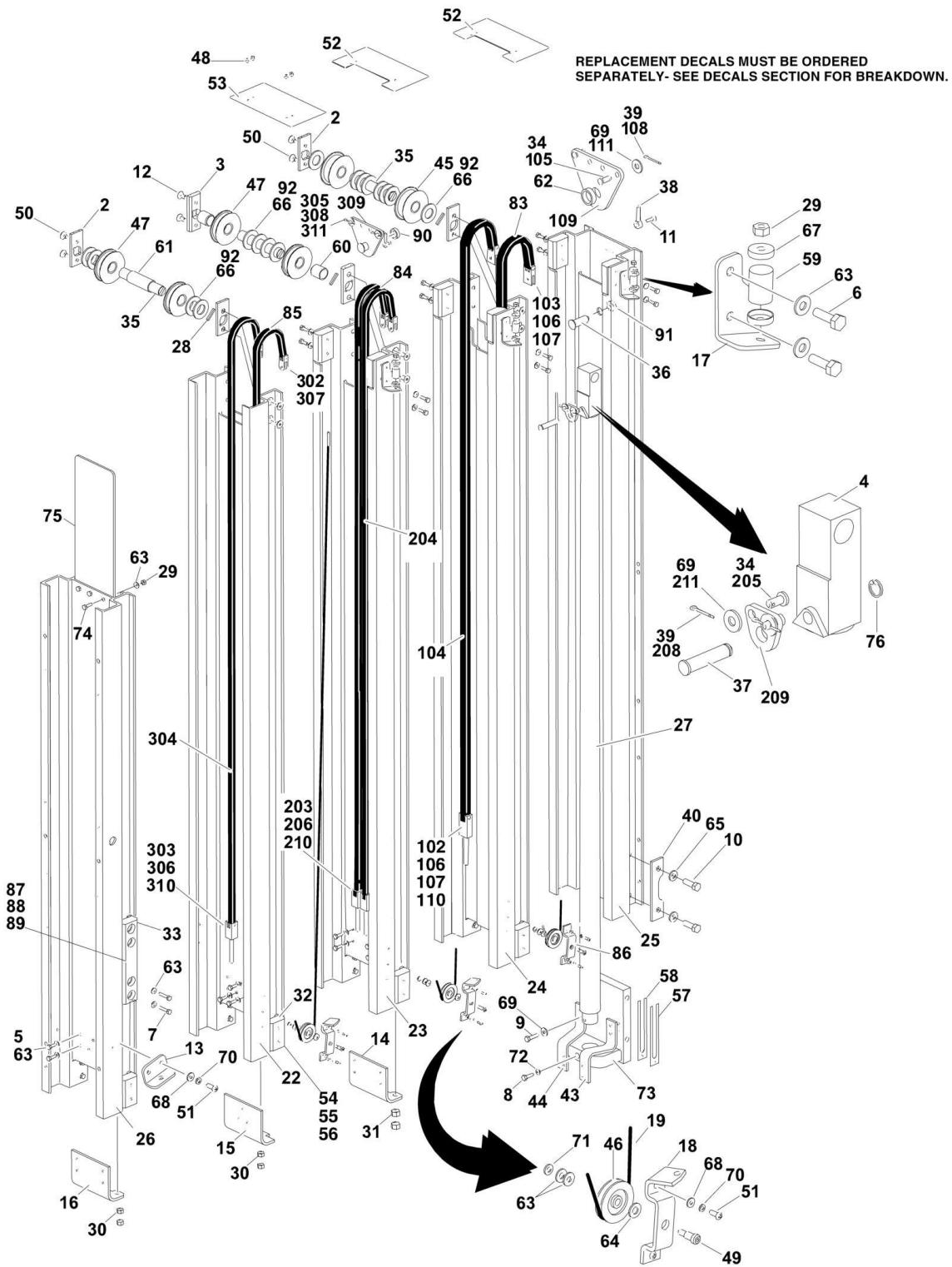
FIGURE 2-5. CONTROL BOX ASSEMBLY

ITEM	PART NUMBER	QTY	DESCRIPTION	REV
	1600304	Ref	CONTROL BOX ASSEMBLY	A
1	7020147	1	Printed Circuit Board	
2	7023201	1	Joystick	
3	7020144	1	Emergency Stop Actuator	
4	7020145	1	Contact Block, Emergency Stop	
5	7020143	1	Knob Potentiometer	
6	7020142	1	Potentiometer	
7	7023202	1	Membrane Keyboard Pad	
8	7020139	1	Joystick Box W/Gasket	
9	7026038	1	Connector, 12 Position	
9	7026039	12	Pin	

SECTION 3 - MAST

SECTION 3 - MAST

FIGURE 3-1. MAST ASSEMBLY - 15VPSP



SECTION 3 - MAST

FIGURE 3-1. MAST ASSEMBLY - 15VPSP

ITEM	PART NUMBER	QTY	DESCRIPTION	REV
	0801211	Ref	MAST ASSEMBLY - 15VPSP (Prior to SN 03620)	I
	0801313	Ref	MAST ASSEMBLY - 15VPSP (SN 03620 to Present)	A
1	0100011	AR	Loctite #242 (Not Shown)	
2	0362735	4	Bar, Sheave Pin Support	
3	0362736	2	Bar, Sheave Pin Support	
4	0561341	1	Block, Chain Anchor	
5	0641406	33	Bolt 1/4in-20NC x 3/4in	
6	0641407	6	Bolt 1/4in-20NC x 7/8in	
7	0641410	8	Bolt 1/4in-20NC x 1 1/4in	
8	0641508	1	Bolt 5/16in-18NC x 1in	
9	0641510	4	Bolt 5/16in-18NC x 1 1/4in	
10	0641812	4	Bolt 1/2in-13NC x 1 1/2in	
11	0741006	2	Screw #10-24NC x 3/4in	
12	0741606	4	Screw 3/8in-16NC x 3/4in	
13	0902047	1	Bracket, Sequence Cable	
14	0902422	1	Bracket, Bottom Chain Attach	
15	0902423	1	Bracket, Bottom Chain Attach	
16	0902424	1	Bracket, Bottom Chain Attach	
17	0902431	3	Bracket, Sequence Cable	
18	0902445	2	Bracket, Sequence Cable	
19	1060683	3	Cable, Sequence	
22	1271392	1	Channel, Mast #6	
23	1271419	1	Channel, Mast #3	
24	1271421	1	Channel, Mast #2	
25	1271455	1	Channel, Mast #1	
26	1271471	1	Channel, Mast Header	
27		Ref	Lift Cylinder Assembly Options (See CYLINDER SECTION for Breakdown):	
27	1683808	1	Lift Cylinder Assembly (Prior to SN 03620)	
27	1684142	1	Lift Cylinder Assembly (SN 03620 to Present)	
28	2880310	3	Key	
29	3311401	6	Nut 1/4in-20NC	
30	3311601	8	Nut 3/8in-16 NC	
31	3311801	4	Nut 1/2in-13NC	
32	3340845	14	Pad, Slide Guide	
33	3340858	2	Pad, Slide Guide	
34	3422338	6	Pin, Chain Equalizer	
35	3422717	3	Pin, Sheave	
36	3422750	2	Pin, Chain Equalizer	
37	3422752	1	Pin, Chain Equalizer	
38	3422757	2	Pin, Keeper	
39	3450304	6	Pin, Cotter	
40	3570893	2	Plate, Cylinder Mount	
43	3571788	1	Plate, Acuator Support	
44	3571790	1	Plate, Acuator Support	
45	3580268	2	Sheave Assembly (Prior to SN 03620)	
45	0440225	1	Bearing	
45	3580267	1	Sheave, Chain	
45	3580286	2	Sheave Assembly (SN 03620 to Present)	
45	0440246	1	Bearing	

SECTION 3 - MAST

ITEM	PART NUMBER	QTY	DESCRIPTION	REV
45	3580285	1	Sheave, Chain	
46	3580269	3	Sheave, Sequence Cable	
47	3580274	4	Sheave Assembly (Prior to SN 03608)	
47	0440230	1	Bearing	
47	3580275	1	Sheave, Chain	
47	3580249	4	Sheave Assembly (SN 03608 to Present)	
47	0440294	1	Bearing	
47	3580275	1	Sheave, Chain	
48	3820034	12	Rivet	
49	3900187	3	Screw, Shoulder	
50	3900192	8	Screw, 3/8in-16NC x 1/2in	
51	3900205	8	Bolt #10-24NC x 5/8in	
52	4060960	2	Shield, Mast Cover	
53	4060961	1	Shield, Mast Cover	
54	4070860	20	Shim, Slide Pad	
55	4070861	20	Shim, Slide Pad	
56	4070862	16	Shim, Slide Pad	
57	4070970	2	Shim, Cylinder Mount	
58	4070971	4	Shim, Cylinder Mount	
59	4160124	3	Spring	
60	4567489	2	Tube, Spacer	
61	4567492	1	Tube, Spacer	
62	4567750	1	Tube, Spacer	
63	4711400	59	Flatwasher 1/4in	
64	4711500	3	Flatwasher 5/16in	
65	4711800	4	Flatwasher 1/2in	
66	4712600	16	Flatwasher 1in (Prior to SN 03608)	
67	4740414	6	Washer, Cup	
68	4750800	8	Flatwasher #8 Wide	
69	4751500	4	Flatwasher 5/16in Wide	
70	4761000	8	Lockwasher #10	
71	4761400	3	Lockwasher 1/4in	
72	4761500	1	Lockwasher 5/16in	
73		Ref	Mount, Cylinder Options:	
73	4845731	1	Mount, Cylinder (Prior to SN 03620)	
73	4846381	1	Mount, Cylinder (SN 03620 to Present)	
74	0641408	3	Bolt 1/4in-20NC x 1in	
75	4061006	1	Shied	
76	3760383	1	Ring, Retainer	
83	1260355	1	Chain Assembly - #544 (See Items 101-107 for Breakdown)	
84	1260356	1	Chain Assembly - #444 (See Items 201-207 for Breakdown)	
85	1260357	1	Chain Assembly - #444 (See Items 301-307 for Breakdown)	
86	0902698	1	Bracket, Sequence Cable	
87	4070988	2	Shim, Slide Pad (SN 03617 to Present)	
88	4070989	2	Shim, Slide Pad (SN 03617 to Present)	
89	4070990	2	Shim, Slide Pad (SN 03617 to Present)	
90	4567749	1	Tube, Spacer (SN 03617 to Present)	
91	4567751	1	Tube, Spacer (SN 03617 to Present)	
92	4740007	14	Washer, Thrust (SN 03617 to Present)	
	Not Available	1	Mast Kit (Not Available at Time of Printing)	
	1260355	Rev	CHAIN ASSEMBLY - #544 CHAIN	C

SECTION 3 - MAST

ITEM	PART NUMBER	QTY	DESCRIPTION	REV
101	0100062	AR	Loctite #RC/640 (Not Shown)	
102	0561308	2	Block, Chain Anchor	
103	0561336	2	Block, Chain Anchor	
104	1260355	11.8 ft/3.6m	Chain	
105	3422338	2	Pin, Groove	
106	3422720	4	Pin, Groove	
107	3450202	8	Pin, Cotter	
108	3450304	2	Pin, Cotter	
109	3571101	1	Plate, Chain Adjustment	
110	4300129	2	Stud	
111	4751500	2	Flatwasher 5/16in	
	1260356	Rev	CHAIN ASSEMBLY - #444 CHAIN	C
201	0100062	AR	Loctite #RC/640 (Not Shown)	
202	0561149	2	Block, Chain Anchor	
203	0561408	2	Block, Chain Anchor	
204	1260356	11.8 ft/3.6m	Chain	
205	3422338	2	Pin, Groove	
206	3422346	2	Pin, Groove	
207	3422355	2	Pin, Groove	
208	3450304	2	Pin, Cotter	
209	3571103	1	Plate, Chain Adjustment	
210	4300111	2	Stud	
211	4751500	2	Flatwasher 5/16in	
	1260357	Rev	CHAIN ASSEMBLY - #444 CHAIN	C
301	0100062	AR	Loctite #RC/640 (Not Shown)	
302	0561149	2	Block, Chain Anchor	
303	0561408	2	Block, Chain Anchor	
304	1260357	11.8 ft/3.6m	Chain	
305	3422338	2	Pin, Groove	
306	3422346	2	Pin, Groove	
307	3422355	2	Pin, Groove	
308	3450304	2	Pin, Cotter	
309	3571101	1	Plate, Chain Adjustment	
310	4300111	2	Stud	
311	4751500	2	Flatwasher 5/16in	

SECTION 3 - MAST

FIGURE 3-2. MAST MOUNTING COMPONENTS

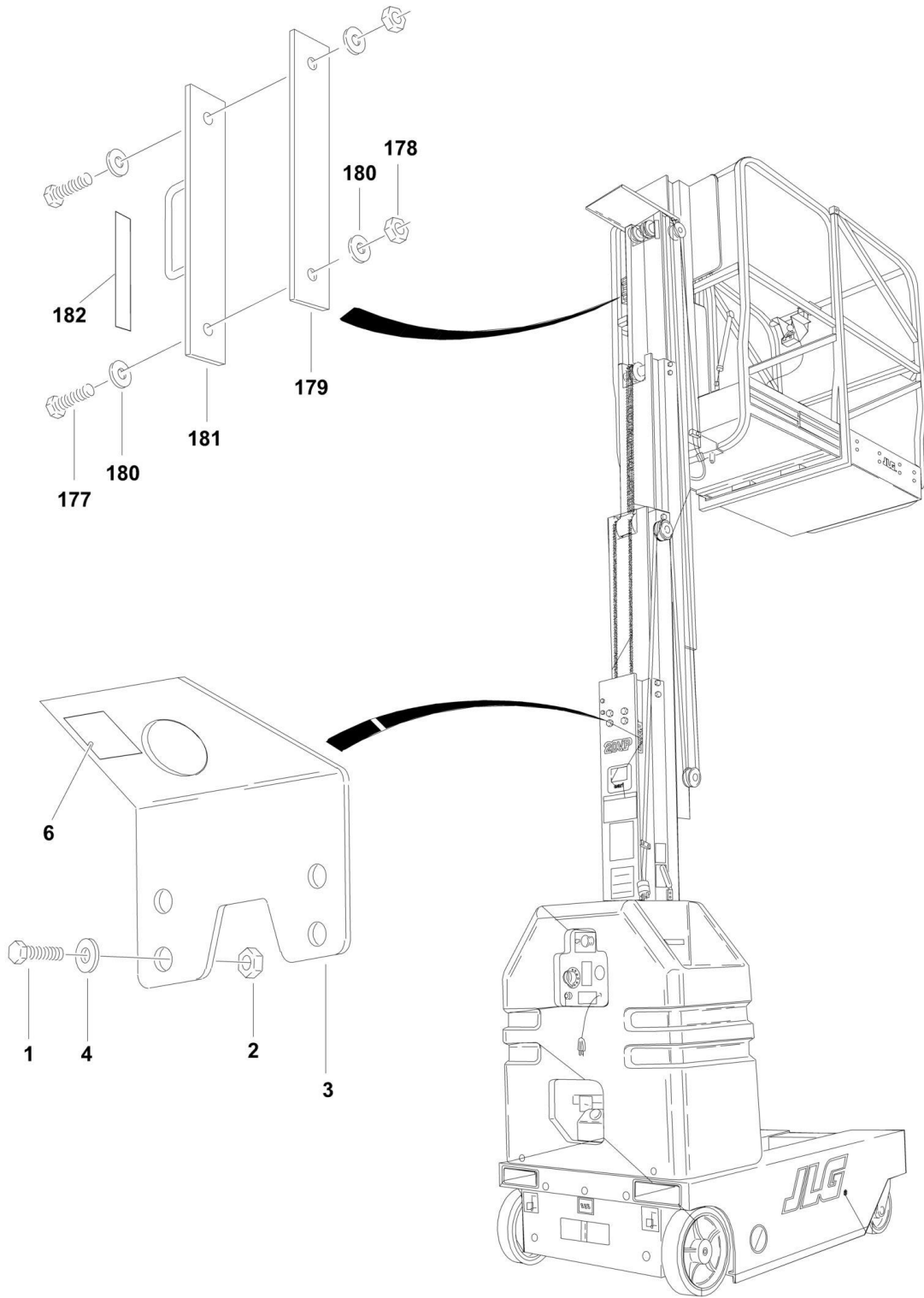


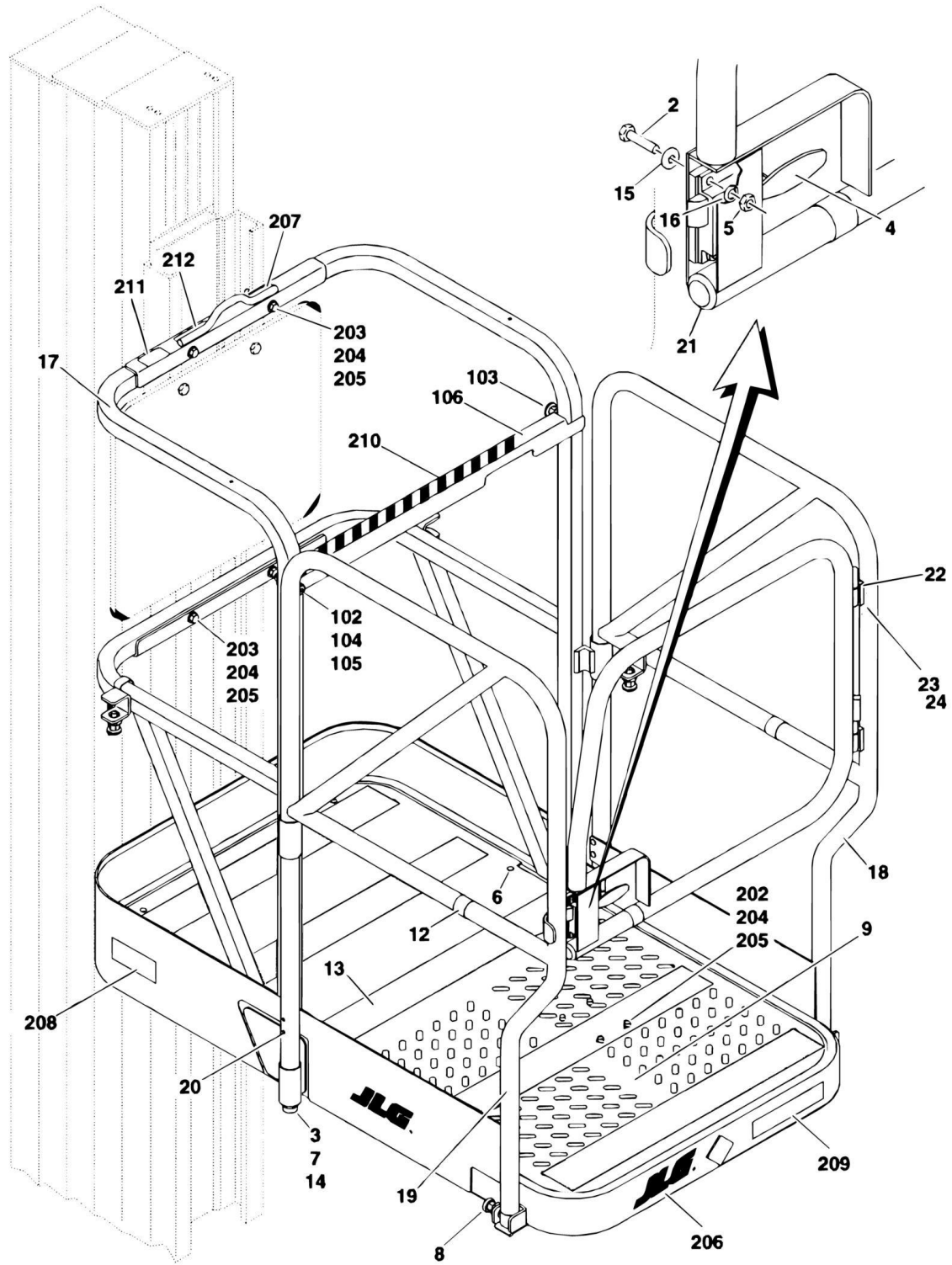
FIGURE 3-2. MAST MOUNTING COMPONENTS

ITEM	PART NUMBER	QTY	DESCRIPTION	REV
	0258448	Ref	OPTIONAL CRANE HOOK INSTALLATION	C
1	0641612	4	Bolt 3/8in-16NC x 1 1/2in	
2	3311605	4	Locknut 3/8in-16NC	
3	3570976	1	Plate, Crane Hook	
4	4711600	8	Flatwasher 3/8in	
6	1703455	1	Decal - Crane Hook	
	0801211	Ref	MAST ASSEMBLY - 15VPSP (SAFETY ATTACH)	I
177	0641812	2	Bolt 1/2in-13NC x 1 1/2in	
178	3271805	2	Locknut 1/2in-13NC	
179	3539814	1	Plate, Safety Attach Backing	
180	4751800	4	Flatwasher 1/2in Wide	
181	4845345	1	Weldment, Safety Attach	
182	1704277	1	Decal - Lanyard Attach	

SECTION 4 - PLATFORM

SECTION 4 - PLATFORM

FIGURE 4-1. PLATFORM INSTALLATION (FOLD DOWN SIDE RAILS)



SECTION 4 - PLATFORM

FIGURE 4-1. PLATFORM INSTALLATION (FOLD DOWN SIDE RAILS)

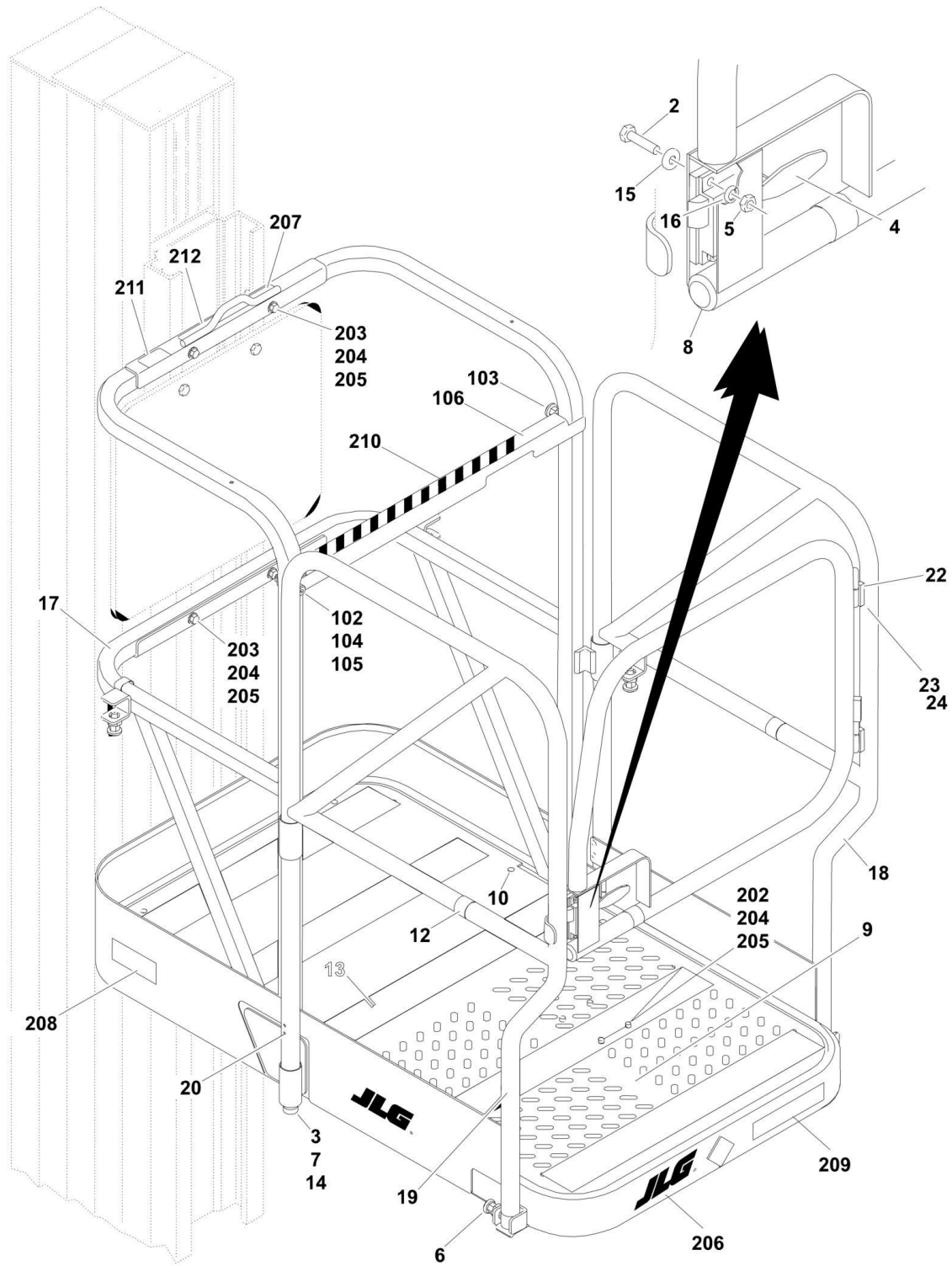
ITEM	PART NUMBER	QTY	DESCRIPTION	REV
	0259350	Ref	PLATFORM ASSEMBLY	G
1	0100011	AR	Loctite #242 (Not Shown)	
2	0721008	4	Screw	
3	0940049	2	Stopper, Hood	
4	2940074	1	Latch	
5	3311001	4	Nut #10-24NC	
6	3820032	12	Rivet	
7	3311501	4	Nut 5/16in-18NC	
8	3422744	5	Pin, Plunger	
9	3571552	1	Plate, Platform Pan	
10 to 11	Not Required	0	Not Required	
12	4280296	2 ft/0.6m	Strip, Wear	
13	4420039	10 ft/3.0m	Tape, Non Skid	
14	4751500	4	Flatwasher 5/16in Wide	
15	4751000	4	Flatwasher #10 Wide	
16	4761000	4	Lockwasher #10	
17		Ref	Platform Options:	
17	4846030	1	Platform (Prior to SN 03571)	
17	4846323	1	Platform (SN 03571 through 03619)	
17	4846521	1	Platform (SN 03620 to Present)	
18		Ref	Platform, Gate Options:	
18	4846034	1	Platform, Gate (Prior to SN 03571)	
18	4846324	1	Platform, Gate (SN 03571 to Present)	
19		Ref	Rail Platform gate Options:	
19	4846035	1	Rail, Platform Gate Options (Prior to SN 03571)	
19	4846325	1	Rail, Platform Gate Options (SN 03571 to Present)	
20	2080040	4	Fastener, Huck	
21	3520176	1	Plug	
22	0962337	2	Bushing, Hinge (SN 03479 to Present)	
23	3422866	2	Pin, Hinge (SN 03479 to Present)	
24	3760448	2	Ring, Snap (SN 03479 to Present)	
	0270065	Ref	PLATFORM SUB ASSEMBLY	A
101	Not Required	0	Not Required	
102	3311605	1	Locknut 3/8in-16NC	
103	3422744	1	Pin, Plunger	
104	3900270	1	Bolt, Shoulder 1/2in-16NC x 1/2in	
105	4711600	1	Flatwasher 3/8in Narrow	
106	4846129	1	Rail, Top	
	0271407	Ref	PLATFORM INSTALLATION	A
201	Not Required	0	Not Required	
202	0641616	2	Bolt 3/8in-16NC x 2in	
203	0641620	4	Bolt 3/8in-16NC x 2 1/2in	
204	3311605	6	Locknut 3/8in-16NC	
205	4711600	12	Flatwasher 3/8in	
206	1703681	5	Decal - JLG	
207	1704277	1	Decal - Lanyard Attach	
208	1704458	1	Decal - JLG Manufacturing	
209	1704467	1	Decal - Model Designation	
210	1704469	1	Decal - Close Gate	
211	1704980	1	Decal - Fall Hazard	

SECTION 4 - PLATFORM

ITEM	PART NUMBER	QTY	DESCRIPTION	REV
212	1704981	1	Decal - 120V AC	

SECTION 4 - PLATFORM

FIGURE 4-2. PLATFORM INSTALLATION (FIXED SIDE RAILS)



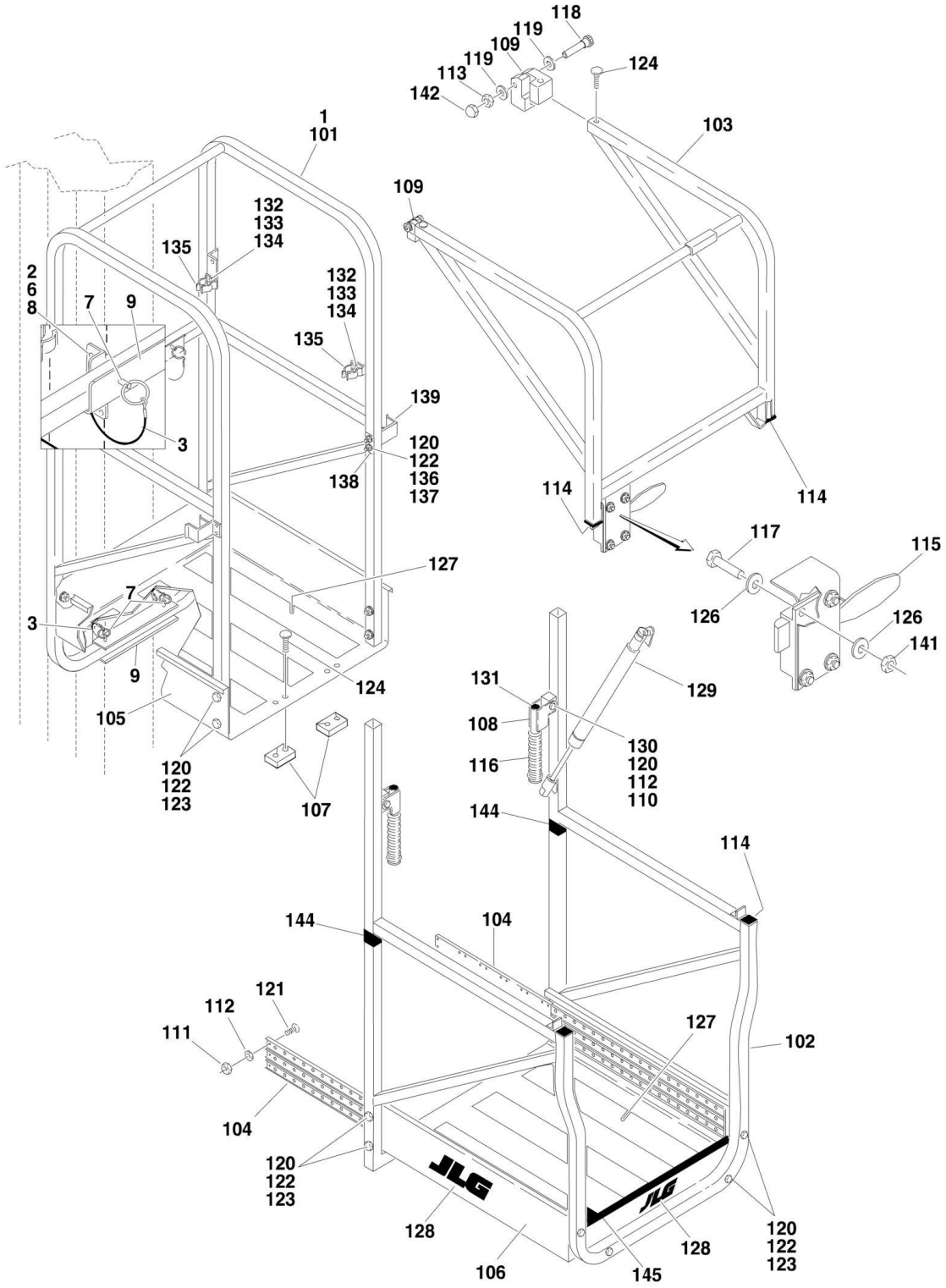
SECTION 4 - PLATFORM

FIGURE 4-2. PLATFORM INSTALLATION (FIXED SIDE RAILS)

ITEM	PART NUMBER	QTY	DESCRIPTION	REV
	0270438	Ref	PLATFORM ASSEMBLY	C
1	0100011	AR	Loctite #242 (Not Shown)	
2	0721008	4	Screw	
3	0940049	2	Stopper, Hood	
4	2940074	1	Latch	
5	3311001	4	Nut #10-24NC	
6	0630545	2	Bolt 5/8in-18NC	
7	3311501	4	Nut 5/16in-18NC	
8	3520176	1	Plug	
9	3571552	1	Plate, Platform Pan	
10	3820032	12	Rivet	
11	Not Required	0	Not Required	
12	4280296	20	Strip, Wear	
		in/51cm		
13	4420039	10 ft/6.1m	Tape, Non Skid	
14	4751500	4	Flatwasher 5/16in Wide	
15	4751000	4	Flatwasher #10 Wide	
16	4761000	4	Lockwasher #10	
17	4846323	1	Platform	
18	4846324	1	Platform, Gate	
19	4846325	1	Rail, Platform Gate	
20	2080040	4	Fastener, Huck	
22	0962337	2	Bushing, Hinge	
23	3422866	2	Pin, Hinge	
24	3760448	2	Ring, Snap	
	0270440	Ref	PLATFORM SUB ASSEMBLY	A
101	Not Required	0	Not Required	
102	3311605	1	Locknut 3/8in-16NC	
103	3422744	1	Pin, Plunger	
104	3900270	1	Bolt, Shoulder 1/2in-16NC x 1/2in	
105	4711600	1	Flatwasher 3/8in Narrow	
106	4846129	1	Rail, Top	
	0271408	Ref	PLATFORM INSTALLATION	A
201	Not Required	0	Not Required	
202	0641616	2	Bolt 3/8in-16NC x 2in	
203	0641620	4	Bolt 3/8in-16NC x 2 1/2in	
204	3311605	6	Locknut 3/8in-16NC	
205	4711600	12	Flatwasher 3/8in	
206	1703681	5	Decal - JLG	
207	1704277	1	Decal - Lanyard Attach	
208	1704458	2	Decal - JLG Manufacturing	
209	1704467	1	Decal - Model Designation	
210	1704469	1	Decal - Close Gate	
211	1704980	1	Decal - Fall Hazard	
212	1704981	1	Decal - 120V AC	

SECTION 4 - PLATFORM

FIGURE 4-3. PLATFORM INSTALLATION (QUICK CHANGE GULLWING)



SECTION 4 - PLATFORM

FIGURE 4-3. PLATFORM INSTALLATION (QUICK CHANGE GULLWING)

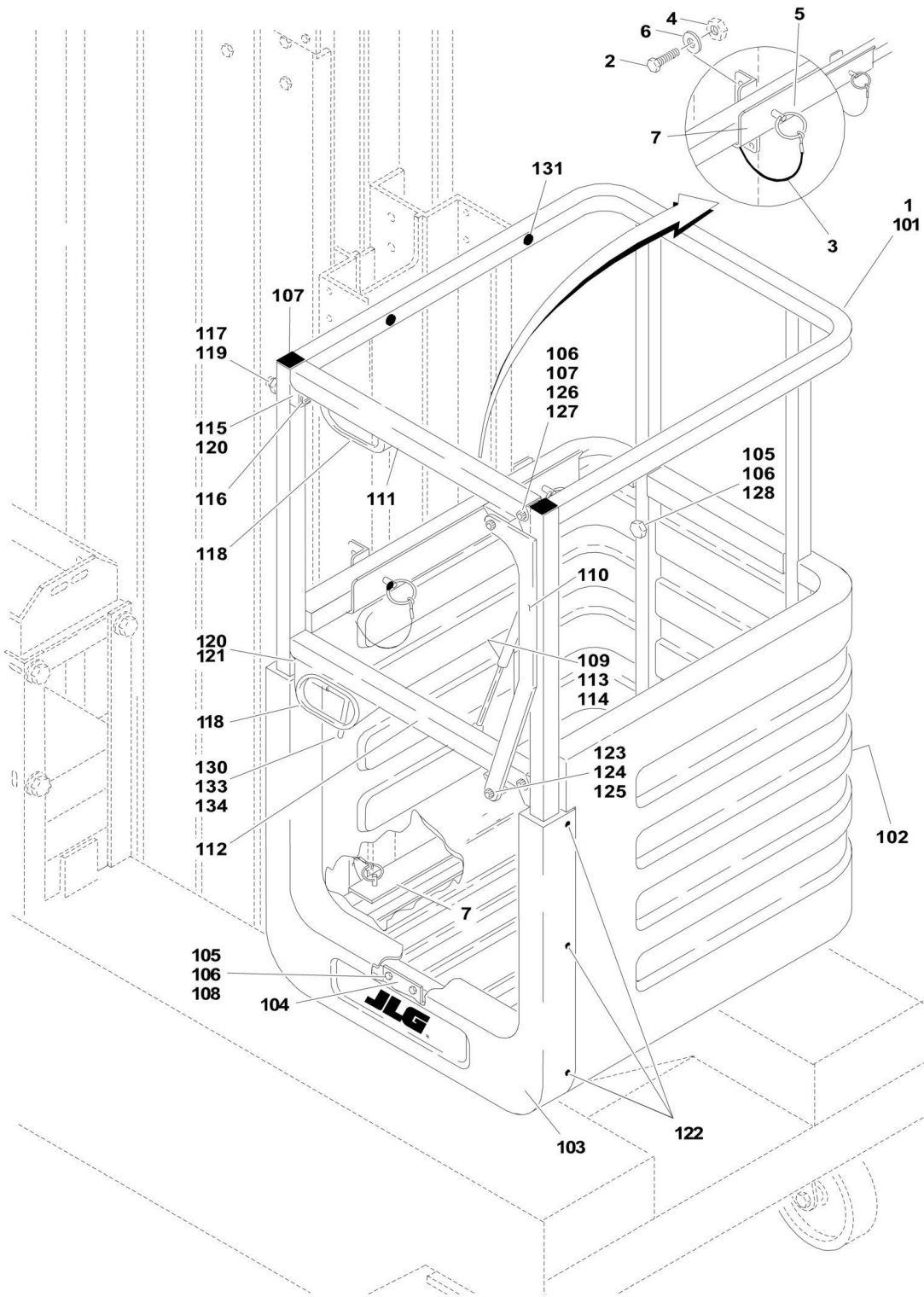
ITEM	PART NUMBER	QTY	DESCRIPTION	REV
	0270513	Ref	PLATFORM INSTALLATION	
1	Not Required	0	Not Required	
2	0641408	8	Bolt 1/4in-20NC x 1in	
3	1060380	4	Cable, Lanyard	
6	3311405	8	Locknut 1/4in-20NC	
7	3422657	4	Pin, Quick Release	
8	4711400	16	Flatwasher 1/4in Narrow	
9	4846921	2	Bracket	
	0258586	Ref	PLATFORM ASSEMBLY	5
101	4845810	1	Weldment, Platform Rail (Stationary)	
102	4845811	1	Weldment, Platform Rail (Extension)	
103	4845812	1	Weldment, Gate	
104	2020005	1 Pair	Glides, Extension	
105	3570362	1	Pan, Floor (Stationary)	
106	3570274	1	Pan, Floor (Extension)	
107	3340829	2	Pad, Slide	
108	4845614	2	Handle	
109	2600225	4	Hinge, Gate	
110	3900200	2	Bolt, Shoulder	
111	3311005	64	Locknut #10-24NC	
112	4751000	66	Flatwasher #10	
113	3311505	2	Locknut 5/16in-18NC	
114	3520072	4	Cap-Plug	
115	2940074	1	Latch	
116	2560154	2	Grip, Handle	
117	0721006	4	Bolt #10-24NC x 3/4in	
118	3900032	2	Bolt, Shoulder	
119	4711600	4	Flatwasher 3/8in (Narrow)	
120	3311405	22	Locknut 1/4in-20NC	
121	3900252	64	Screw, Button Head 1/4in-20NC	
122	4711400	40	Flatwasher 1/4in (Narrow)	
123	0641414	16	Bolt 1/4in-20NC x 1 3/4in	
124	3900258	8	Screw, Button Head 1/4in-20NC x 3/4in	
125	0100011	AR	Loctite #242 (Not Shown)	
126	4751000	8	Flatwasher #10	
127	4420039	11 ft/3.4m	Tape, Non Skid	
128	1703681	3	Decal - JLG	
129	4160165	1	SPRING, GAS SHOCK (NOTE: NOT INCLUDE BRACKETS)	
129	0902877	2	BRACKET, MOUNTING	
130	4711500	4	Flatwasher 5/16in (Narrow)	
131	3250030	2	Plug, Hole	
132	0720805	4	Screw #8-32NC x 5/8in	
133	4750800	8	Flatwasher #8	
134	3310805	4	Locknut #8-32NC	
135	1380132	4	Clip, Gripper	
136	0641416	4	Bolt 1/4in-20NC x 2in	
137	3570653	2	Plate, Shim	
138	3570654	2	Plate, Backing	
139	4845657	2	Weldment, Stop	
141	3311005	4	Locknut #10-24NC	

SECTION 4 - PLATFORM

ITEM	PART NUMBER	QTY	DESCRIPTION	REV
142	3300356	2	Nut, Acorn 5/16in-18NC	
144	4280296	10 in/25cm	Strip, Wear	
145	4060803	2.2 ft/0.67m	Shield, Flex-Trim	

SECTION 4 - PLATFORM

FIGURE 4-4. PLATFORM INSTALLATION (QUICK CHANGE MOLDED)



SECTION 4 - PLATFORM

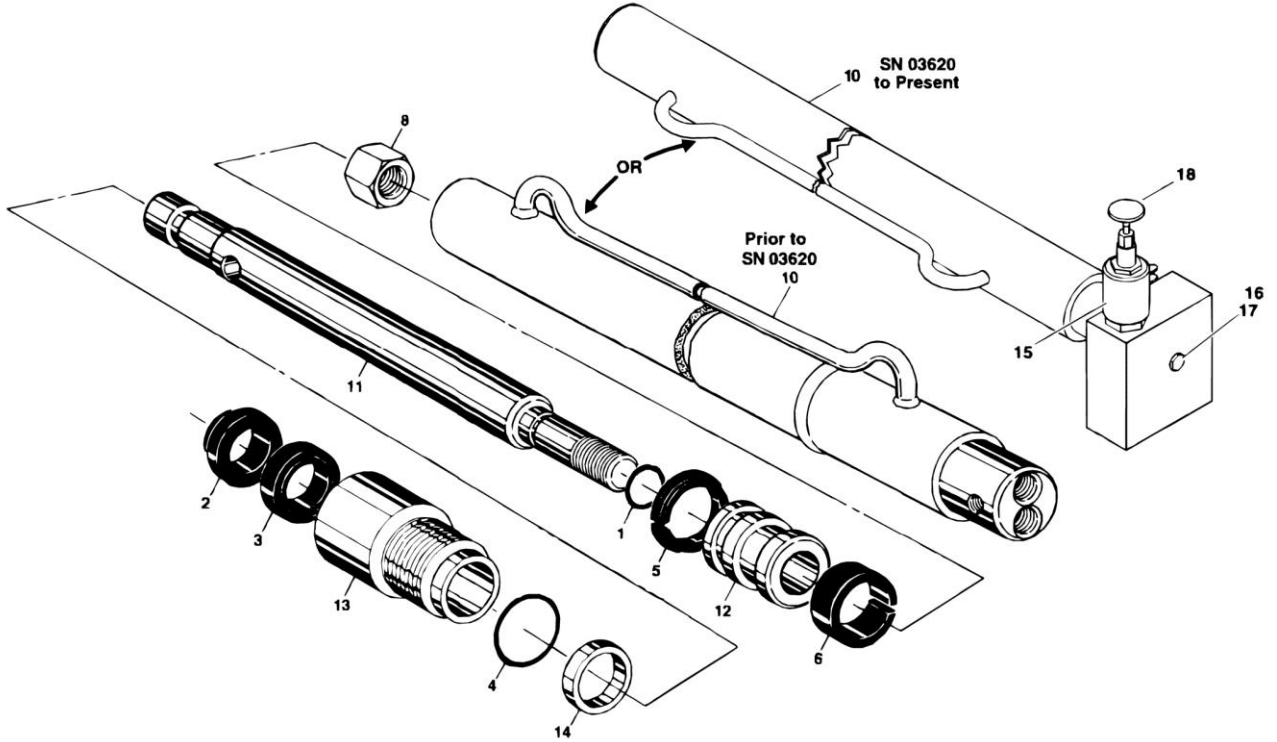
FIGURE 4-4. PLATFORM INSTALLATION (QUICK CHANGE MOLDED)

ITEM	PART NUMBER	QTY	DESCRIPTION	REV
	0270512	Ref	MOLDED PLATFORM INSTALLATION	A
2	0641408	8	Bolt 1/4in-20NC x 1in	
3	1060380	4	Cable, Lanyard	
4	3311405	8	Locknut 1/4in-20NC	
5	3422657	4	Pin, Ball Detent	
6	4711400	16	Flatwasher 1/4in	
7	4846021	2	Weldment, Platform Mount	
	0258672	Ref	PLATFORM ASSEMBLY	1/A
101	4845822	1	Rail	
102	3510676	1	Basket	
103	4060882	1	Cover	
104	4845831	1	Weldment, Bottom Mount	
105	0641416	10	Bolt 1/4in-20NC x 2in	
106	4751400	22	Flatwasher 1/4in	
107	3520072	4	Cap	
108	3311405	12	Locknut 1/4in-20NC	
109	4160125	1	Spring, Gas	
110	0362347	1	Link, Gate	
111	3640924	1	Rail, Gate (Top)	
112	3640990	1	Rail, Gate (Bottom)	
113	4751500	1	Flatwasher 5/16in	
114	3311505	1	Locknut 5/16in-18NC	
115	3340746	1	Pad, Gate Rest	
116	3911032	4	Screw, Machine #10-24NC x 2in	
117	4751000	8	Flatwasher #10	
118	4060803	2 ft/0.6m	Flex-Trim	
119	3311001	4	Nut #10-24NC	
120	4070890	2	Shim, Gate Stop	
121	3340754	1	Pad, Gate Latch	
122	3900177	6	Screw, Plastite	
123	3900202	2	Bolt, Shoulder	
124	4740429	4	Washer, Nylon	
125	3311005	2	Locknut #10-24NC	
126	3900203	2	Bolt, Shoulder	
127	4740428	4	Washer, Nylon	
128	3300151	2	Nut, Acorn 1/4in-20NC	
129	0100011	AR	Loctite #242 (Not Shown)	
130	2940082	1	Latch, Gate	
131	3520028	4	Plug	
133	3820024	2	Rivet	
134	4070894	1	Shim, Gate Latch	

SECTION 5 - CYLINDER

SECTION 5 - CYLINDER

FIGURE 5-1. LIFT CYLINDER ASSEMBLY



SECTION 5 - CYLINDER

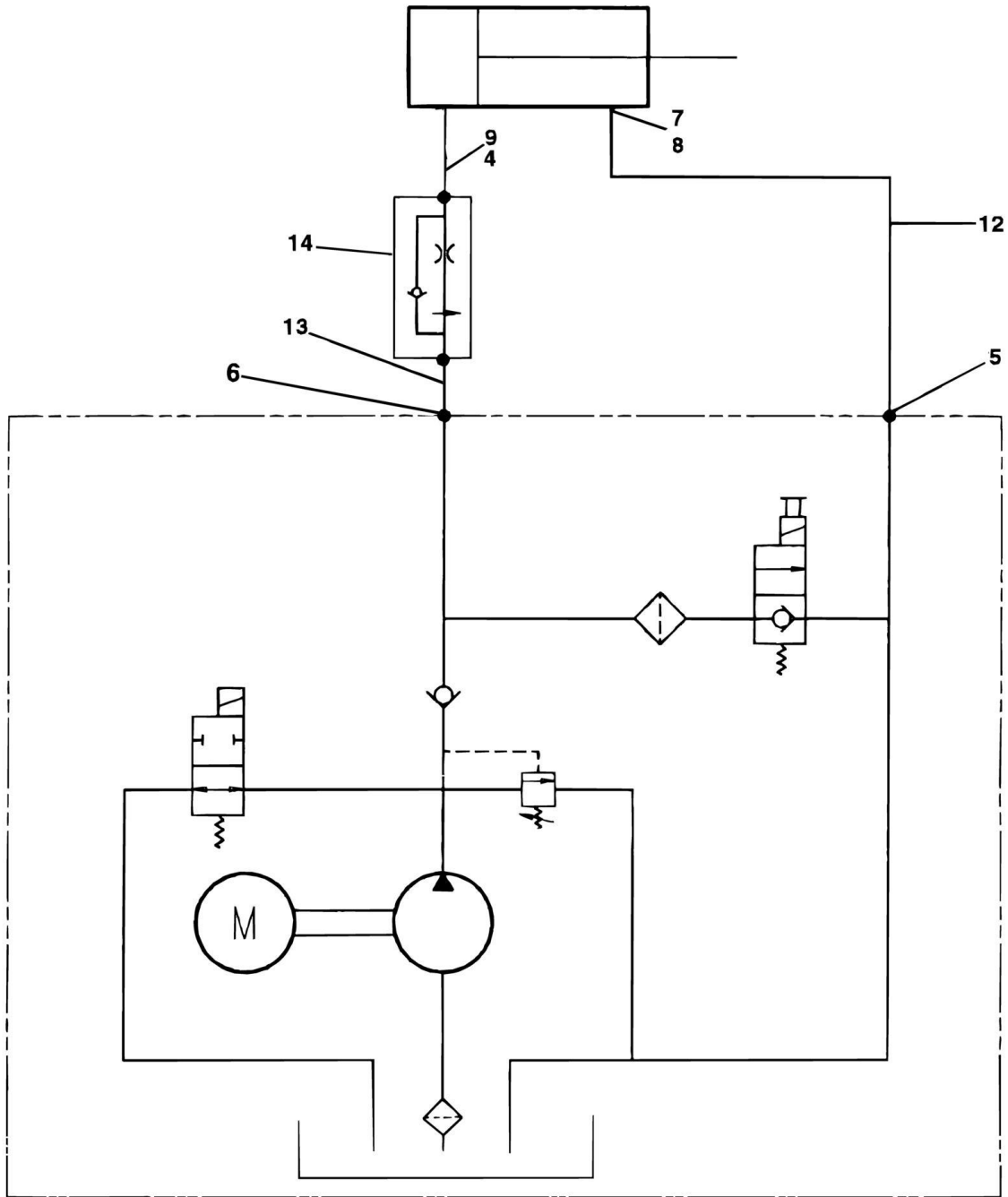
FIGURE 5-1. LIFT CYLINDER ASSEMBLY

ITEM	PART NUMBER	QTY	DESCRIPTION	REV
		Ref	LIFT CYLINDER ASSEMBLIES	
	1683808	Ref	Lift Cylinder Assemblies (Prior to SN 03620)	A
	1684142	Ref	Lift Cylinder Assemblies (SN 03620 to Present)	G
1	Kit	1	O-Ring	
2	Kit	1	Wiper	
3	Kit	1	Seal	
4	Kit	1	O-Ring	
5	Kit	1	Seal	
6	Kit	1	Ring, Wear	
8		Ref	Locknut Options:	
8	7003246	1	Locknut (Prior to SN 03620)	
8	7023391	1	Locknut (SN 03620 to Present)	
10		Ref	Barrel Options:	
10	7019839	1	Barrel (Prior to SN 03620)	
10	Not Available		Barrel (SN 03620 to Present)	
11		Ref	Rod Options:	
11	7019838	1	Rod (Prior to SN 03620)	
11	7023393	1	Rod (SN 03620 to Present)	
12		Ref	Piston Options:	
12	7019835	1	Piston (Prior to SN 03620)	
12	7023392	1	Piston (SN 03620 to Present)	
13		Ref	Head Options:	
13	7019834	1	Head (Prior to SN 03620)	
13	7023394	1	Head (SN 03620 to Present)	
14		Ref	Spacer Options:	
14	7019872	1	Spacer (Prior to SN 03620)	
14	Not Required	0	Spacer (SN 03620 to Present)	
15		Ref	Poppet, Solenoid Valve Only (SN 03620 to Present)	
15	7024354	1	Poppet, Solenoid Valve - 20 Volt Coil	
15	7012958	1	20 Volt Coil Only	
15	7012998	1	Seal Kit	
16	7023397	1	Spring Only (SN 03620 to Present)	
17	7023398	1	Control Valve Only (SN 03620 to Present)	
18	7023399	1	Knob-Red	
	7019865	1	Seal Kit - 1683808 (Includes Items 1-6)	
	7023395	1	Seal Kit - 1684142 (Includes Items 1-6)	

SECTION 6 - HYDRAULIC

SECTION 6 - HYDRAULIC

FIGURE 6-1. HYDRAULIC DIAGRAM



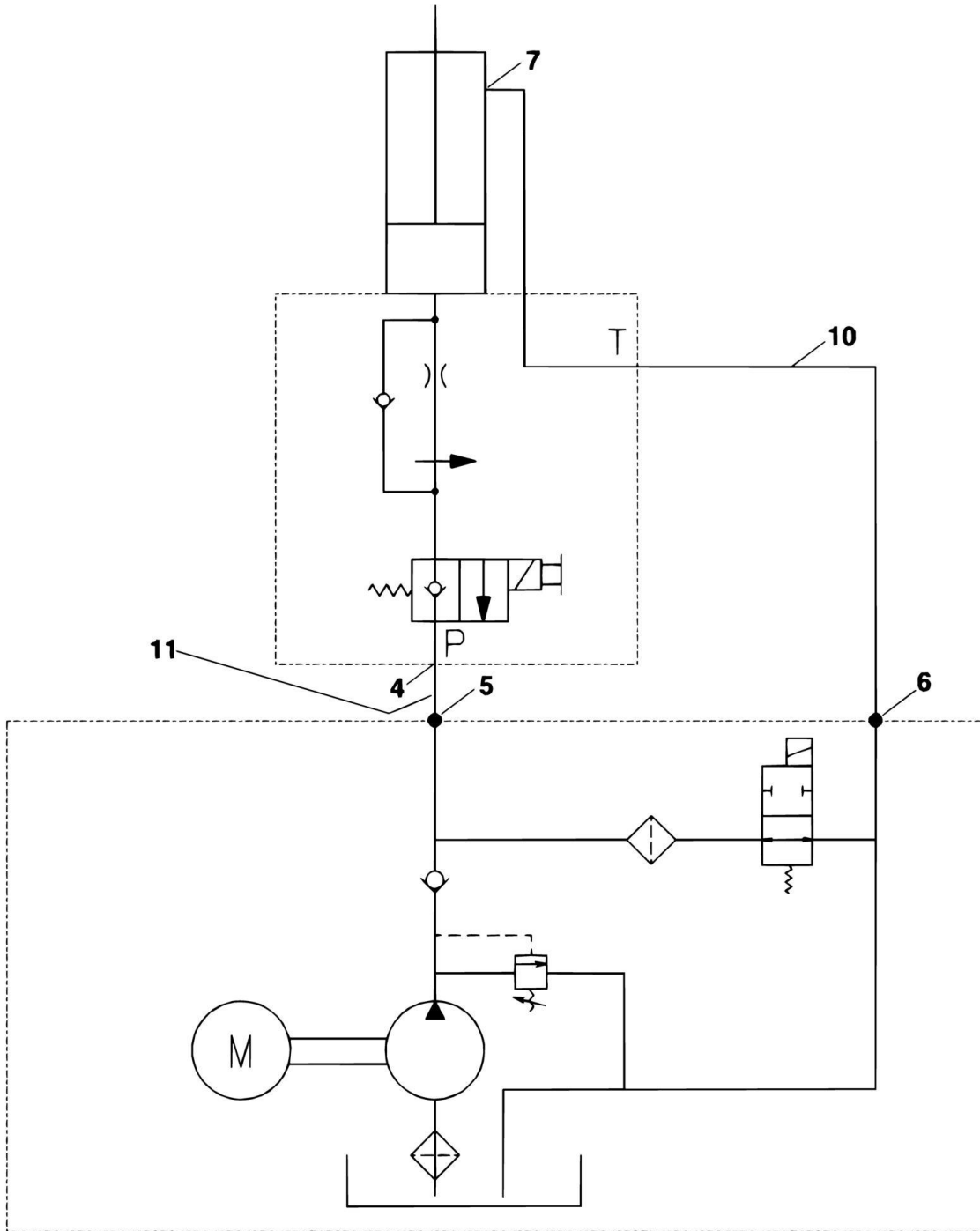
SECTION 6 - HYDRAULIC

FIGURE 6-1. HYDRAULIC DIAGRAM

ITEM	PART NUMBER	QTY	DESCRIPTION	REV
	0259774	Ref	HYDRAULIC DIAGRAM	A
1	0100020	AR	Sealant, Pipe (Not Shown)	
4	2220416	1	Fitting	
5	2220472	1	Fitting	
6	2220473	1	Fitting	
7	2220507	1	Fitting, 90	
8	2220603	1	Fitting	
9	2220875	1	Fitting	
12	4568026	1	Tube, Return	
13	4568027	1	Tube, Extension	
14	4640956	1	Valve, Flow	

SECTION 6 - HYDRAULIC

FIGURE 6-2. HYDRAULIC DIAGRAM (SN 03620 to Present)



SECTION 6 - HYDRAULIC

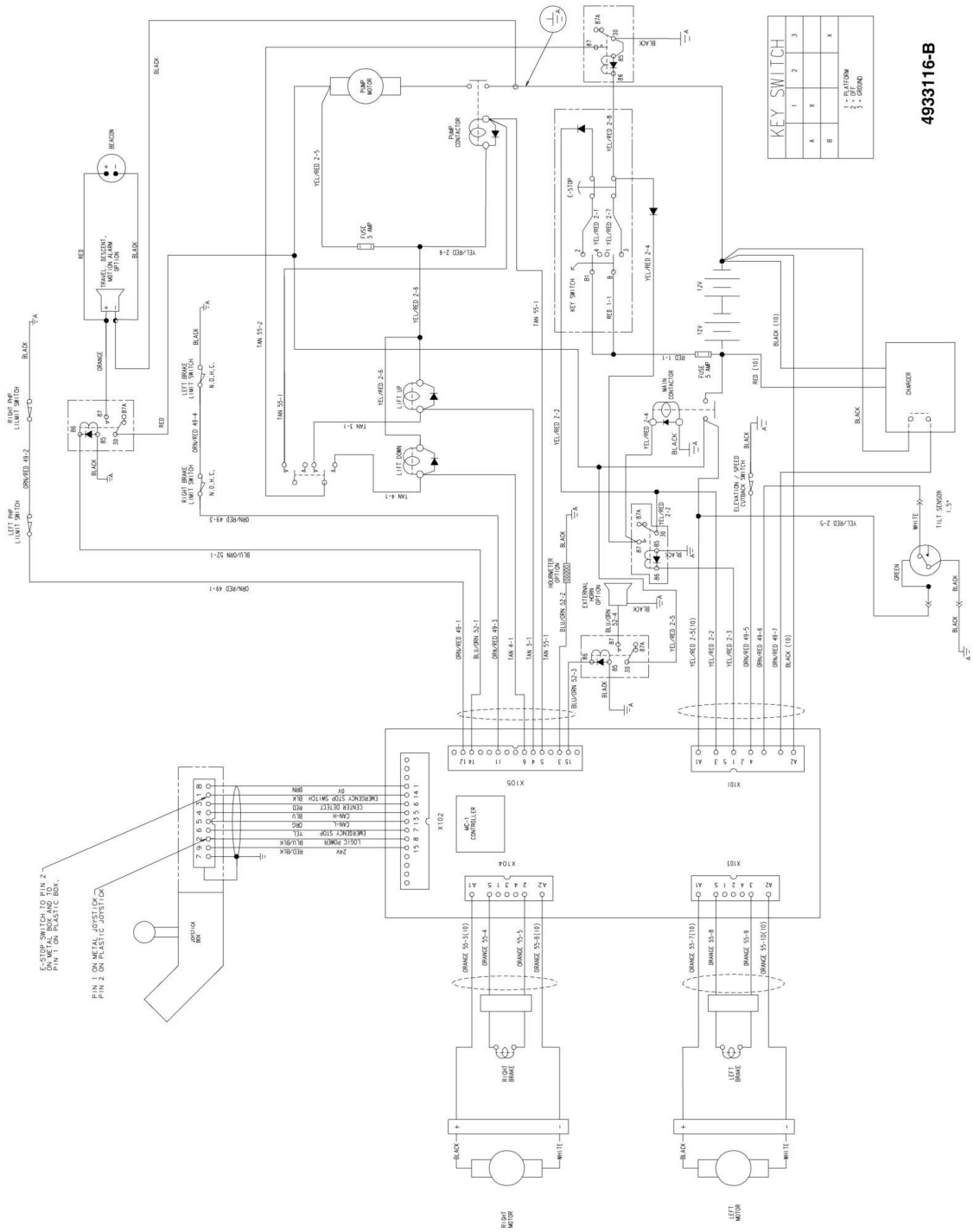
FIGURE 6-2. HYDRAULIC DIAGRAM (SN 03620 to Present)

ITEM	PART NUMBER	QTY	DESCRIPTION	REV
	0271466	Ref	HYDRAULIC DIAGRAM	A
1	0100020	AR	Sealant, Pipe (Not Shown)	
4	2220415	1	Fitting	
5	2220472	1	Fitting	
6	2220473	1	Fitting	
7	2220603	1	Fitting	
10	4568285	1	Tube, Return	
11	4568286	1	Tube, Extension	

SECTION 7 - ELECTRICAL

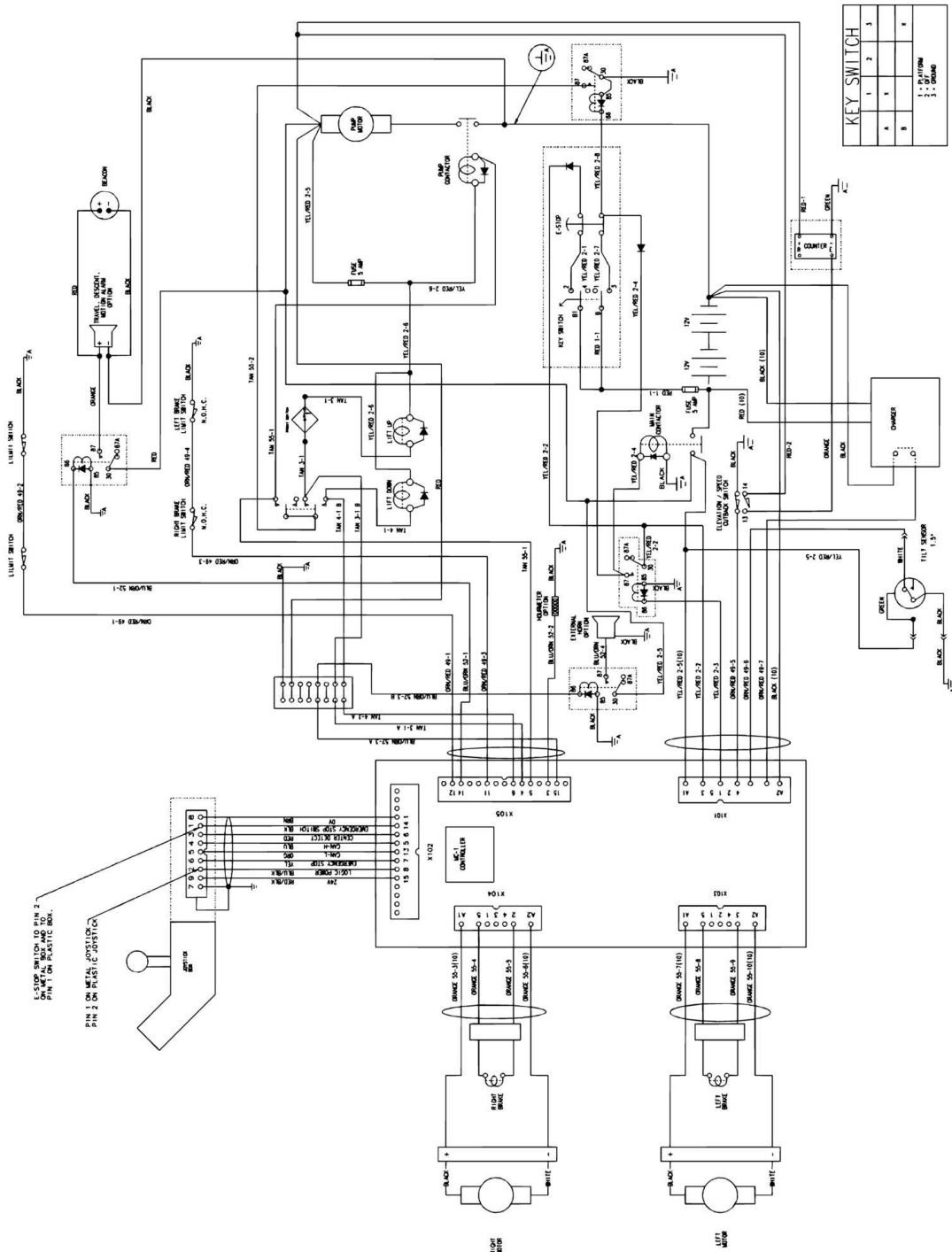
SECTION 7 - ELECTRICAL

FIGURE 7-1. ELECTRICAL SCHEMATIC (Prior to SN 03620)



SECTION 7 - ELECTRICAL

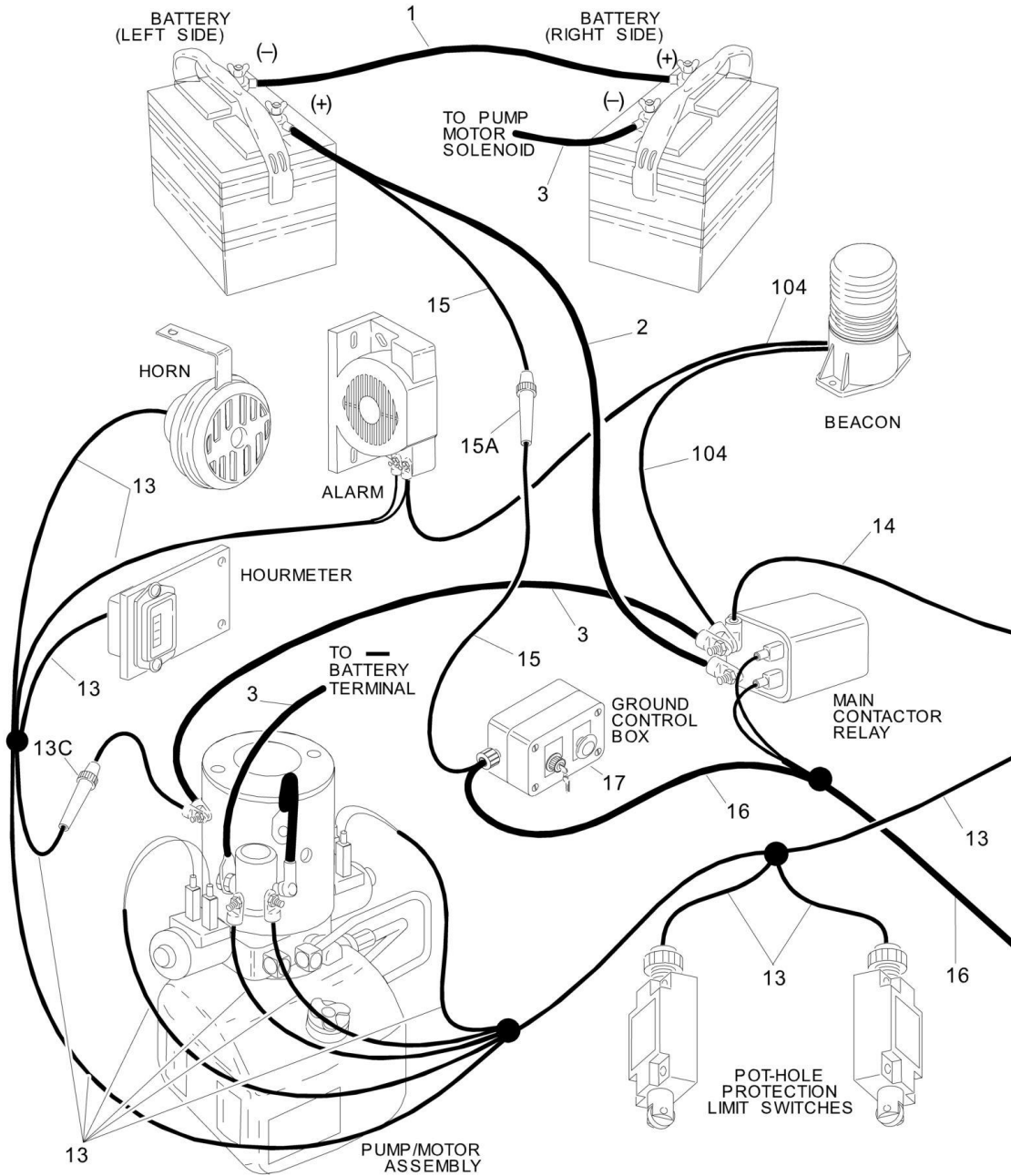
FIGURE 7-2. ELECTRICAL SCHEMATIC (SN 03620 to Present)



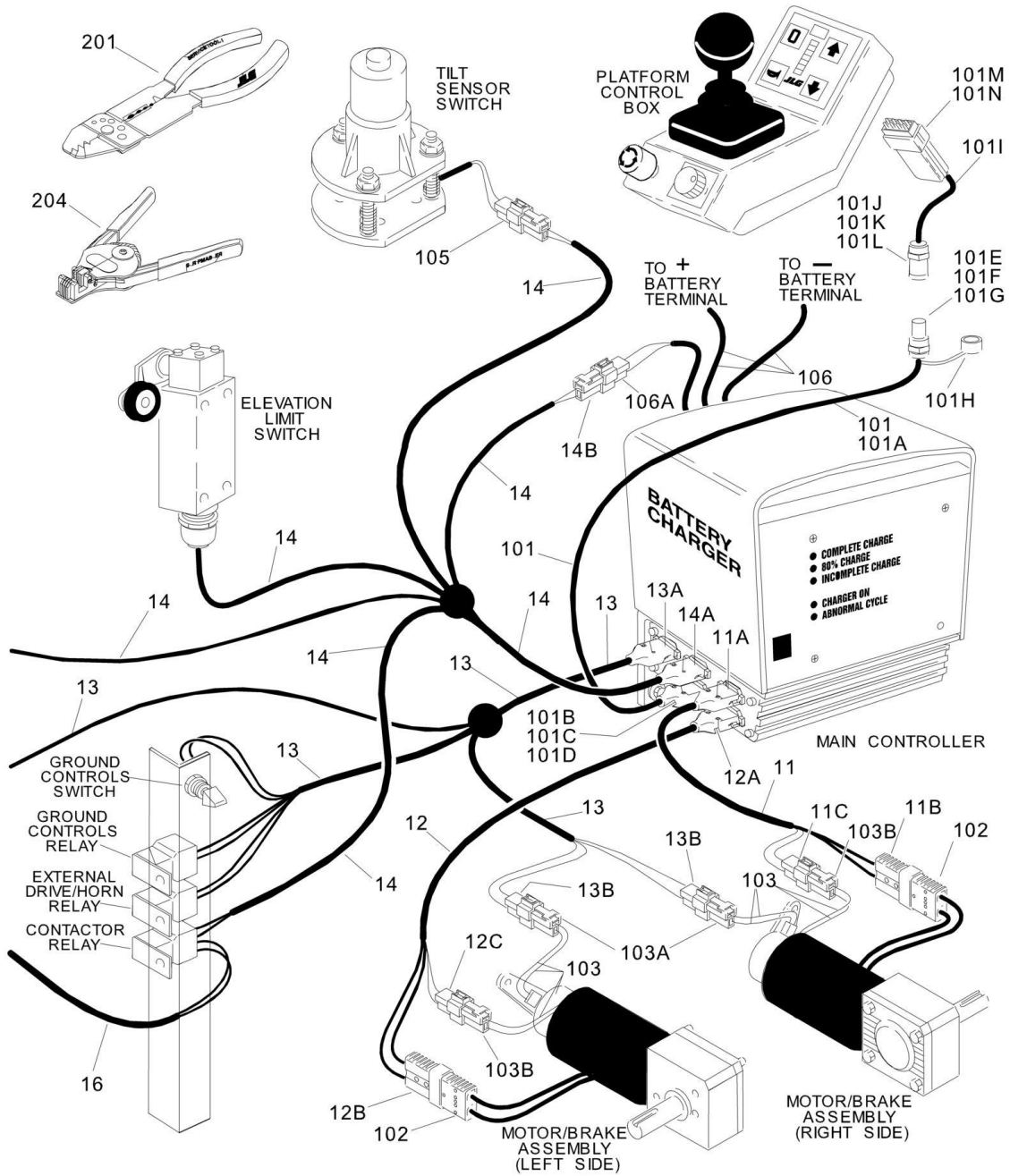
4933172_D

SECTION 7 - ELECTRICAL

FIGURE 7-3. ELECTRICAL COMPONENTS INSTALLATION



SECTION 7 - ELECTRICAL



SECTION 7 - ELECTRICAL

FIGURE 7-3. ELECTRICAL COMPONENTS INSTALLATION

ITEM	PART NUMBER	QTY	DESCRIPTION	REV
		Ref	ELECTRICAL SYSTEM INSTALLATIONS	
	0259776	Ref	Electrical System Installations (Prior to SN 03620)	E
	0271478	Ref	Electrical System Installations (SN 03620 to Present)	A
1	1060618	1	Cable, Battery - 40in	
2	1060619	1	Cable, Battery - 24in	
3	1060620	2	Cable, Battery - 21in	
11	4921963	1	Harness, Right Motor	
11A	4460644	1	Receptacle - 5 Pin	
11A	4460645	2	Shell, Receptacle	
11B	4460648	1	Receptacle - 2 Position	
11C	4460320	1	Connector, Female - 2 Position	
11C	4460267	1	Pin	
11C	4460268	2	Socket	
12	4921964	1	Harness, Left Motor	
12A	4460644	1	Receptacle - 5 Pin	
12A	4460645	2	Pin	
12B	4460648	1	Receptacle - 2 Position	
12C	4460320	1	Connector, Female - 2 Position	
12C	4460267	1	Pin	
12C	4460268	2	Socket	
13	4921965	1	Harness, Valve and Limit Switch (Prior to SN 03083)	
13	4922492	1	Harness, Valve and Limit Switch (SN 03083 through 03619)	
13	4922617	1	Harness, Valve and Limit Switch (SN 03620 to Present)	
13	3990010	AR	Diode	
13A	4460681	1	Receptacle - 15 Pin	
13A	4460643	1	Shell, Receptacle	
13A	4460684	8	Socket	
13B	4460424	2	Connector, Male - 2 Position	
13B	4460267	2	Pin	
13B	4460268	2	Socket	
13C	2400006	1	Fuse - 5 Amp	
13C	4460044	1	Fuseholder	
14	4921966	1	Harness, Controller Power	
14	3990010	2	Diode	
14A	4460646	1	Receptacle - 5 Pin	
14A	4460647	2	Shell, Receptacle	
14B	4460320	1	Connector, Female - 2 Position	
14B	4460268	2	Socket	
15	4921967	1	Harness, Key Switch Power	
15A	2400006	1	Fuse - 5 Amp	
15A	4460044	1	Fuseholder	
16	4921968	1	Harness, Main Contactor	
16	3990010	2	Diode - 6 Amp	
17	4921969	1	Harness, E-Stop (Located Inside Control Box)	
18	4460234	2	Strap, Tie (Not Shown)	
19	4240032	6	Strap, Tie (Not Shown)	
20	4240033	4	Strap, Tie (Not Shown)	
		Ref	STANDARD HARNESS ASSEMBLIES	
101	4922203	1	Harness, Ground to Platform	
101A	1060616	AR	Cable, Shielded	

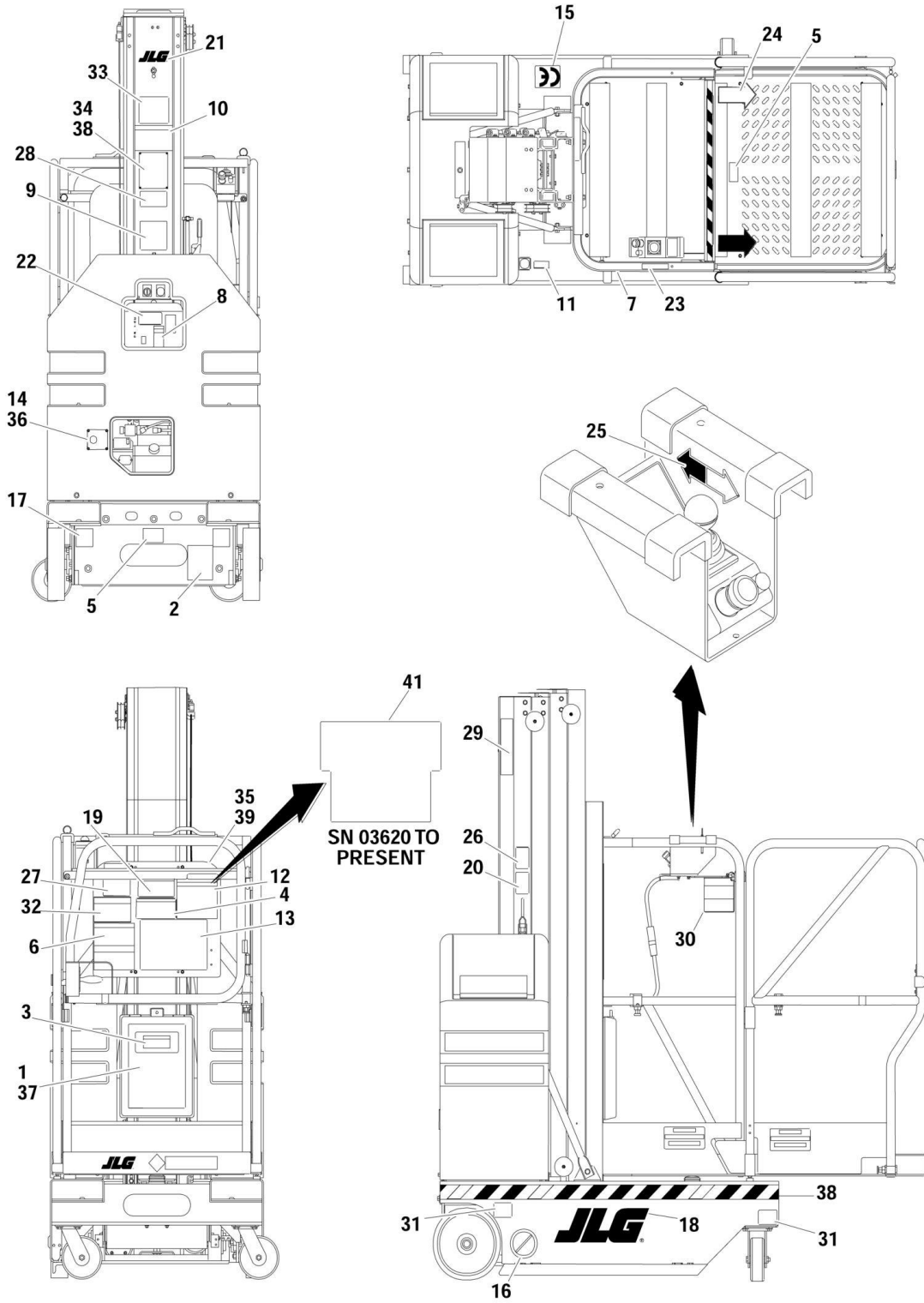
SECTION 7 - ELECTRICAL

ITEM	PART NUMBER	QTY	DESCRIPTION	REV
101B	4460682	1	Terminal, 15 Pin	
101C	4460643	1	Terminal, 15 Pin	
101D	4460683	8	Terminal, Pin	
101E	4460771	1	Terminal Plug, Male	
101F	4460773	1	Backshell	
101G	4460775	9	Pin, Male	
101H	4460774	1	Cap, Dust	
101I	7020216	1	Harness, Connector (Includes Items 101J, 101K, 101L, 101M & 101N)	
101J	4460772	1	Terminal Plug, Female	
101K	4460773	1	Backshell	
101L	4460776	9	Pin, Female	
101M	4460671	1	Terminal, 12 Pin	
101N	4460672	9	Terminal, Female	
102	4460648	2	Terminal (Harness Supplied with Drive Motor Only)	
103	Not Available	2	Harness Assembly - Brake	
103A	4460320	2	Connector, Female - 2 Position	
103A	4460268	1	Socket	
103A	4460267	1	Pin	
103B	4460424	1	Connector, Male - 2 Position	
103B	4460268	1	Socket	
103B	4460267	1	Pin	
104	Not Available	1	Beacon Light Harness Assembly	
105	4460445	1	Receptacle - 3 Position (Attach to #14 for Tilt Sensor)	
105	4460227	3	Pin	
106	7018567	1	DC Battery Charger Harness Assembly	
106A	7011621	1	Connector, Male - 2 Position	
106A	4460267	2	Pin, Male	
		Ref	TOOLS	
	0100048	AR	Compound, Silicone (Use on connectors/receptacles)	
201	7002821	1	Crimper (For Wire to Pin/Socket Connections)	
202	7002830	1	Extractor (For Removal of Pin/Socket from Connectors) (Not Shown)	
204	7002828	1	Stripper, Wire	

SECTION 8 - DECALS

SECTION 8 - DECALS

FIGURE 8-1. DECALS INSTALLATION



SECTION 8 - DECALS

FIGURE 8-1. DECALS INSTALLATION

ITEM	PART NUMBER	QTY	DESCRIPTION	REV
	0270637	Ref	DECAL INSTALLATION	C
1	0860520	1	Box, Manual Storage	
2	1700584	1	Decal - Patent	
3	1702110	1	Decal - Read Instructions	
4	1702282	1	Decal - Warning (Prior to SN 03620)	
5	1702300	2	Decal - Tie Down	
6	1702361	1	Decal - Electrical Hazard (Prior to SN 03620)	
7	1702364	2	Decal - Crushing	
8	1702437	1	Decal - Explosion/Fire Hazard	
9	Not Available	1	Decal - Bar Code	
10	1702885	1	Decal - Daily Checklist	
11	1702886	1	Decal - Leveling	
12	1702887	1	Decal - Operation (Prior to SN 03620)	
13	1702905	1	Decal - Joystick (Prior to SN 03620)	
14	1702922	1	Decal - Manual Decent (Prior to SN 03620)	
15	1702928	1	Decal - CE	
16	1703072	2	Decal - No Forklift	
17	1703073	2	Decal - Fork Pockets	
18	1703625	2	Decal - JLG	
19	1703635	1	Decal - Brakes (Prior to SN 03620)	
20	1703636	1	Decal - Brakes	
21	1703681	1	Decal - JLG	
22	1703682	1	Decal - Charger Cord Location	
23	1703684	1	Decal - Control Box Location	
24	1703687	2	Decal - Arrow	
25	1703688	2	Decal - Arrow	
26	1703708	1	Decal - Towing/Winching	
27	1704366	1	Decal - Fall Hazard (Prior to SN 03620)	
28	1704458	1	Decal - JLG Manufacturing	
29	1704467	3	Decal - Model Designation	
30	1704527	1	Decal - Operation	
31	1704539	4	Decal - Wheel Load	
32	1704785	1	Decal - Maximum Capacity (Prior to SN 03620)	
33	3251813	1	Decal - USA	
34	Not Available	1	Nameplate, Serial Number	
35	3380441	1	Panel, Control	
36	3820006	4	Rivet (Prior to SN 03620)	
37	3820024	4	Rivet	
38	3820031	4	Rivet	
39	3820032	4	Rivet	
40	4420051	AR	Tape, Safety	
41	1704890	1	Decal - Warning/Instruction (SN 03620 to Present)	

SECTION 9 - RECOMMENDED SERVICE PARTS STOCK

SECTION 9 - RECOMMENDED SERVICE PARTS STOCK

SECTION 9 - RECOMMENDED SERVICE PARTS STOCK

FIGURE 9-1. VPSP SERIES STANDARD PARTS

ITEM	PART NUMBER	QTY	DESCRIPTION	REV
	Note	Ref	Note: The following list will service fleets of machines (built to current production per date on the front cover) with emergency repair parts which can be installed in the field. Parts from the list should be replaced when inventory is depleted to keep service parts stock supplied. For further information, contact your JLG dealer or the JLG Industries Parts Department.	
		Ref	STANDARD PARTS	
	3740069	1	Relay, Power 24 VDC, (for fleets of 1 to 10)	
	3740069	1	Relay, Power 24 VDC, (for fleets of 10 to 20)	
	3740069	1	Relay, Power 24 VDC, (for fleets of 20 of more)	
	4360314	1	Switch, Toggle, (for fleets of 1 to 10)	
	4360314	1	Switch, Toggle, (for fleets of 10 to 20)	
	4360314	1	Switch, Toggle, (for fleets of 20 of more)	
	4360465	1	Switch, Tilt, (for fleets of 1 to 10)	
	4360465	1	Switch, Tilt, (for fleets of 10 to 20)	
	4360465	1	Switch, Tilt, (for fleets of 20 of more)	
	7014117	1	Switch, Micro, (for fleets of 1 to 10)	
	7014117	1	Switch, Micro, (for fleets of 10 to 20)	
	7014117	1	Switch, Micro, (for fleets of 20 of more)	
	4360456	1	Switch, Limit, (for fleets of 1 to 10)	
	4360456	1	Switch, Limit, (for fleets of 10 to 20)	
	4360456	1	Switch, Limit, (for fleets of 20 of more)	
	0861330	1	Ground Control Box, (for fleets of 1 to 10)	
	0861330	1	Ground Control Box, (for fleets of 10 to 20)	
	0861330	1	Ground Control Box, (for fleets of 20 of more)	
	1600305	1	Controller, (for fleets of 1 to 10)	
	1600305	1	Controller, (for fleets of 10 to 20)	
	1600305	1	Controller, (for fleets of 20 of more)	
	3740130	1	Relay 100-Amp, (for fleets of 1 to 10)	
	3740130	1	Relay 100-Amp, (for fleets of 10 to 20)	
	3740130	1	Relay 100-Amp, (for fleets of 20 of more)	
	4360437	1	Switch, Limit, (for fleets of 1 to 10)	
	4360437	1	Switch, Limit, (for fleets of 10 to 20)	
	4360437	1	Switch, Limit, (for fleets of 20 of more)	
	1600304	1	Controller, Joystick, (for fleets of 1 to 10)	
	1600304	1	Controller, Joystick, (for fleets of 10 to 20)	
	1600304	1	Controller, Joystick, (for fleets of 20 of more)	
	7018551	1	Transformer, (for fleets of 1 to 10)	
	7018551	1	Transformer, (for fleets of 10 to 20)	
	7018551	1	Transformer, (for fleets of 20 of more)	
	7018564	1	Relay, Interlock, (for fleets of 1 to 10)	
	7018564	1	Relay, Interlock, (for fleets of 10 to 20)	
	7018564	1	Relay, Interlock, (for fleets of 20 of more)	
	7018557	1	Breaker, Circuit - AC, (for fleets of 1 to 10)	
	7018557	1	Breaker, Circuit - AC, (for fleets of 10 to 20)	
	7018557	1	Breaker, Circuit - AC, (for fleets of 20 of more)	
	7011509	1	Breaker, Circuit - DC, (for fleets of 1 to 10)	
	7011509	1	Breaker, Circuit - DC, (for fleets of 10 to 20)	
	7011509	1	Breaker, Circuit - DC, (for fleets of 20 of more)	

SECTION 9 - RECOMMENDED SERVICE PARTS STOCK

ITEM	PART NUMBER	QTY	DESCRIPTION	REV
	7016735	1	Coupling, (for fleets of 1 to 10)	
	7016735	1	Coupling, (for fleets of 10 to 20)	
	7016735	1	Coupling, (for fleets of 20 of more)	
	7013723	1	Filter - 149 Micron, (for fleets of 1 to 10)	
	7013723	1	Filter - 149 Micron, (for fleets of 10 to 20)	
	7013723	1	Filter - 149 Micron, (for fleets of 20 of more)	
	7016714	1	Breather, (for fleets of 1 to 10)	
	7016714	1	Breather, (for fleets of 10 to 20)	
	7016714	1	Breather, (for fleets of 20 of more)	
	7016711	1	Solenoid, Start, (for fleets of 1 to 10)	
	7016711	1	Solenoid, Start, (for fleets of 10 to 20)	
	7016711	1	Solenoid, Start, (for fleets of 20 of more)	
	3990010	2	Diode, (for fleets of 1 to 10)	
	3990010	2	Diode, (for fleets of 10 to 20)	
	3990010	2	Diode, (for fleets of 20 of more)	
	2400006	2	Fuse - 5 Amp, (for fleets of 1 to 10)	
	2400006	2	Fuse - 5 Amp, (for fleets of 10 to 20)	
	2400006	2	Fuse - 5 Amp, (for fleets of 20 of more)	

SECTION 10 - SPECIAL OPTIONS

SECTION 10 - SPECIAL OPTIONS

FIGURE 10-1. SPECIAL OPTIONS

ITEM	PART NUMBER	QTY	DESCRIPTION	REV
	Note	Ref	Note: This list is to accomodate machines ordered with special equipment. Options may not be applicable to all models. For more specific parts information contact JLG Parts Department.	
	0272004	Ref	CYCLE COUNTER	
		Ref	ELECTRICAL CONNECTOR KITS	
	1001148902	Ref	Amp/Tyco Electrical Connector Kit	
	1001148903	Ref	Deutsch DT Electrical Connector Kit	
	1001148904	Ref	Deutsch HD Electrical Connector Kit	
	1001148905	Ref	Packard Electrical Connector Kit	
	1001148906	Ref	Various Electrical Connectors Kit	
	0255040	Ref	FLUORESCENT TUBE CADDY	
	0258799	Ref	MATERIAL TRAY	
	0271198	Ref	RUG CARRIER Note: For Breakdown of Obstruction Sensing System Refer to Obstruction Sensing Manual p/n 3124289	
		Ref	TOOLS	
	0100048	AR	Compound, Silicone (Use on connectors/receptacles)	
	7002821	1	Crimper (For Wire to Pin/Socket Connections)	
	7002830	1	Extractor (For Removal of Pin/Socket from Connectors)	
	7002828	1	Stripper, Wire	
	1001137005	1	Cable Kit, Software (Not Shown)	

PART NUMBER INDEX

SECTION 10 - SPECIAL OPTIONS

01000119, 13, 19, 37, 45, 49, 51, 55	0641416 51, 55	1380132 27, 51	2940074 45, 49, 51
0100019 10, 13	0641508 23, 37	1400126 13	2940082 55
0100020 63, 65	0641510 37	1600304 27, 33, 82	3020022 19
0100035 10, 13, 19	0641528 10	1600305 23, 82	3160234 13, 17
0100048 75, 86	0641606 24	1683808 37, 59	3250030 51
0100062 39	0641608 9, 10	1684142 37, 59	3251813 79
0140022 23	0641609 9, 13, 23	1700584 79	3271805 41
0140033 23	0641610 13	1702110 79	3300151 55
0181857 23	0641612 9, 41	1702282 79	3300202 23
0255040 86	0641616 45, 49	1702300 79	3300356 52
0256851 13	0641620 45, 49	1702361 79	3300417 27
0257490 19	0641711 13	1702364 79	3310601 9
0258448 41	0641810 9	1702437 79	3310801 27
0258586 51	0641812 37, 41	1702885 79	3310805 51
0258672 55	0720805 51	1702886 79	3311001 23, 45, 49, 55
0258718 13	0721006 23, 51	1702887 79	3311005.9, 19, 23, 51, 55
0258799 86	0721008 9, 45, 49	1702905 79	3311401 37
0259350 45	0741006 37	1702922 79	3311405.9, 23, 27, 51, 55
0259527 9	0741407 23	1702923 9	3311501 10, 45, 49
0259528 23	0741605 24	1702928 79	3311505 51, 55
0259769 27	0741606 37	1703072 79	3311601 37
0259774 23	0741609 13	1703073 79	3311605.9, 10, 13, 23, 27, 41, 45, 49
0259776 74	0801211 37, 41	1703455 41	3311705 13
0270065 45	0801313 37	1703625 79	3311801 37
0270352 10	0860520 79	1703635 79	3311805 10
0270438 49	0861330 23, 82	1703636 79	3312002 19
0270440 49	0880139 9	1703681 45, 49, 51, 79	3340746 55
0270512 55	0902047 37	1703682 79	3340754 55
0270513 51	0902250 23	1703684 79	3340829 51
0270535 9	0902356 23	1703687 79	3340845 37
0270637 79	0902422 37	1703688 79	3340858 37
0271198 86	0902423 37	1703708 79	3380441 79
0271407 45	0902424 37	1704277 41, 45, 49	3422338 37, 39
0271408 49	0902431 37	1704366 79	3422346 39
0271465 9	0902445 37	1704458 45, 49, 79	3422355 39
0271466 24	0902583 9	1704467 45, 49, 79	3422657 27, 51, 55
0271478 74	0902698 38	1704469 45, 49	3422717 37
0272004 86	0902877 51	1704527 79	3422720 39
0362347 55	0940049 45, 49	1704539 79	3422744 45, 49
0362658 23	0962337 45, 49	1704582 10	3422750 37
0362735 37	1001137005 86	1704785 79	3422752 37
0362736 37	1001148902 86	1704890 79	3422757 37
0400122 23	1001148903 86	1704980 45, 49	3422866 45, 49
0400157 29	1001148904 86	1704981 46, 49	3430630 19
0400164 23	1001148905 86	2020005 51	3440418 19
0400166 29	1001148906 86	2080040 45, 49	3440520 13
0440221 13	1060380 27, 51, 55	2220415 65	3450202 39
0440225 37	1060616 74	2220416 63	3450304 37, 39
0440230 38	1060618 74	2220472 63, 65	3450403 19
0440246 37	1060619 74	2220473 63, 65	3510676 55
0440294 38	1060620 74	2220507 63	3520028 55
0561149 39	1060649 19	2220603 63, 65	3520072 51, 55
0561284 10	1060658 9, 10	2220875 63	3520166 23
0561308 39	1060661 10	2400006 74, 83	3520176 45, 49
0561336 39	1060662 10	2420140 9	3539814 41
0561341 37	1060662 10	2420165 9	3570168 13
0561341 37	1060683 37	2420165 9	3570169 13
0561408 39	1100103 19	2560150 10	3570172 10
0630446 9	1260355 38, 39	2560154 51	3570230 19
0630504 23	1260356 38, 39	2600225 51	3570274 51
0630545 49	1260357 38, 39	2680483 23	3570362 51
0641405 19	1271392 37	2700080 23	3570382 10
0641406 9, 23, 37	1271419 37	2820085 9	3570653 51
0641407 37	1271419 37	2860027 13	3570654 51
0641408 38, 51, 55	1271421 37	2860029 13	3570680 27
0641410 27, 37	1271455 37	2860030 23	
0641414 51	1271471 37	2880310 37	
	1320043 27	2920146 9	
	1320149 27		

SECTION 10 - SPECIAL OPTIONS

3570737	27	4160124	38	4711700	13	7002830	75, 86
3570893	37	4160125	55	4711800	38	7003246	59
3570976	41	4160130	27	4712000	19	7011509	29, 82
3571101	39	4160160	19	4712600	38	7011528	29
3571103	39	4160162	19	4740007	38	7011621	75
3571552	45, 49	4160164	9	4740414	38	7011649	29
3571788	37	4160165	51	4740428	55	7012958	59
3571790	37	4160166	10	4740429	55	7012998	59
3580231	27	4240032	74	4740430	9	7013701	31
3580249	38	4240033	10, 74	4740478	13	7013708	31
3580267	37	4240084	10	4750600	9, 19	7013713	31
3580268	37	4280296	45, 49, 52	4750800	13, 27, 38, 51	7013714	31
3580269	38	4300106	9	47510009	23, 27, 45, 49, 51, 55	7013715	31
3580274	38	4300111	39	4751400	23, 55	7013716	31
3580275	38	4300129	39	4751500	23, 27, 38, 39, 45, 49, 55	7013717	31
3580285	38	4360314	9, 82	4751600	9, 10, 13, 19, 24	7013720	31
3580286	37	4360437	23, 82	4751800	10, 41	7013722	31
3600254	24, 31	4360456	19, 82	4761000	38, 45, 49	7013723	31, 83
3640924	55	4360465	9, 82	4761400	38	7013727	31
3640990	55	4360469	23	4761500	38	7013728	31
3740069	9, 23, 82	4420039	45, 49, 51	4845291	10	7013733	31
3740130	23, 82	4420051	79	4845345	41	7013743	31
3760170	27	4460044	74	4845473	13	7013750	31
3760383	38	4460227	75	4845474	10	7013758	31
3760448	45, 49	4460234	74	4845507	19	7013759	31
3820006	79	4460267	29, 74, 75	4845508	19	7013766	31
3820024	27, 55, 79	4460268	74, 75	4845509	19	7013770	31
3820031	79	4460320	74, 75	4845614	51	7013791	31
3820032	45, 49, 79	4460424	29, 74, 75	4845657	51	7013792	31
3820034	38	4460445	75	4845731	38	7013793	31
3841343	19	4460633	23	4845810	51	7014117	13, 82
3900032	51	4460643	74, 75	4845811	51	7014118	13
3900177	55	4460644	74	4845812	51	7014119	13
3900187	38	4460645	74	4845822	55	7014120	13
3900192	38	4460646	74	4845831	55	7016319	9
3900200	27, 51	4460647	74	4845875	23	7016372	9
3900202	19, 55	4460648	9, 74, 75	4845876	23	7016683	13
3900203	55	4460662	19	4845878	23	7016684	13
3900205	38	4460671	75	4846021	55	7016685	13
3900221	13	4460672	75	4846030	45	7016686	13
3900248	10	4460681	74	4846034	45	7016687	13
3900249	19	4460682	75	4846035	45	7016688	13
3900252	51	4460683	75	4846087	9	7016689	13
3900258	51	4460684	74	4846129	45, 49	7016690	13
3900270	45, 49	4460685	23	4846173	10	7016691	13
3910620	9, 19	4460771	75	4846323	45, 49	7016710	31
3911010	9, 23	4460772	75	4846324	45, 49	7016711	31, 83
3911024	23	4460773	75	4846325	45, 49	7016712	31
3911032	55	4460774	75	4846381	38	7016713	31
3930808	13	4460775	75	4846521	45	7016714	31, 83
3990010	74, 83	4460776	75	4860175	9	7016718	31
4040268	13	4567203	19	4860177	9	7016720	31
4060803	52, 55	4567489	38	4921963	74	7016721	31
4060882	55	4567492	38	4921964	74	7016722	31
4060960	38	4567749	38	4921965	74	7016723	31
4060961	38	4567750	38	4921966	74	7016724	31
4061006	38	4567751	38	4921967	74	7016735	31, 83
4070860	38	4568026	63	4921968	74	7017717	31
4070861	38	4568027	63	4921969	74	7018000	17
4070862	38	4568285	65	4922203	27, 74	7018001	17
4070890	55	4568286	65	4922492	74	7018002	17
4070894	55	4640956	63	4922617	74	7018005	17
4070970	38	47114009	10, 19, 23, 27, 38, 51, 55	7002821	75, 86	7018007	17
4070971	38	4711500	38, 51	7002828	75, 86	7018008	17
4070988	38	4711600	10, 23, 41, 45, 49, 51			7018009	17
4070989	38					7018010	17
4070990	38						

SECTION 10 - SPECIAL OPTIONS

7018011.....	17	7018586.....	29	7020097.....	23	7023357.....	14
7018012.....	17	7018589.....	29	7020139.....	33	7023358.....	14
7018013.....	17	7019659.....	9	7020142.....	33	7023359.....	14
7018014.....	17	7019660.....	9	7020143.....	33	7023360.....	14
7018015.....	17	7019661.....	9	7020144.....	33	7023361.....	14
7018018.....	17	7019662.....	9	7020145.....	33	7023391.....	59
7018019.....	17	7019663.....	9	7020147.....	33	7023392.....	59
7018027.....	17	7019834.....	59	7020216.....	75	7023393.....	59
7018028.....	17	7019835.....	59	7020620.....	29	7023394.....	59
7018537.....	29	7019838.....	59	7022205.....	31	7023395.....	59
7018551.....	29, 82	7019839.....	59	7022206.....	31	7023397.....	59
7018554.....	29	7019865.....	59	7023201.....	33	7023398.....	59
7018555.....	29	7019872.....	59	7023202.....	33	7023399.....	59
7018556.....	29	7020075.....	27	7023351.....	13	7024354.....	59
7018557.....	29, 82	7020076.....	27	7023352.....	13	7026038.....	33
7018562.....	29	7020078.....	23	7023353.....	14	7026039.....	33
7018563.....	29	7020093.....	23	7023354.....	14		
7018564.....	29, 82	7020094.....	23	7023355.....	14		
7018567.....	29, 75	7020096.....	23	7023356.....	14		



**Corporate Office
JLG Industries, Inc.
1 JLG Drive
McConnellsburg, PA 17233-9533 USA**

☎ (717) 485-5161 (Corporate)
☎ (877) 554-5438 (Customer Support)
📠 (717) 485-6417

**Visit our website for JLG Worldwide Locations.
www.jlg.com**



OSHKOSH™