

OPERATORS & SAFETY Service & Maintenance Illustrated Parts

Models
10VP
15VP
20VP

3123001
September 15, 1997



AUSTRALIAN OFFICE

JLG INDUSTRIES, INC.
P.O. Box 5119
11 Bolwarra Road
Port Macquarie, Australia
Telephone: 065 811111
Fax: 065 810122

EUROPEAN OFFICE

JLG INDUSTRIES (EUROPE)
Kilmarting Place,
Tannochside Park
Uddingston, Scotland, G71 5PH
Telephone: 01698 811005
Main Fax: 01698 811055
Parts Fax: 01698 811455

WORLD HEADQUARTERS

JLG INDUSTRIES, INC.
1 JLG Drive
McConnellsburg, PA.
17233 -9533
USA
Telephone: (717) 485 -5161
Fax: (717) 485 -6417

REVISION LOG

- February 1, 1996 – Original Issue of Manual
- May 24, 1996 – Manual Revised – Numerous changes, removed illustrative photos in all sections and replaced them with line art, revised Section 9, Troubleshooting and Section 10, Parts Manual.
- July 23, 1996 – Change 1 – Pages Affected:
Revision Log – Page c
Table of Contents – Page ii
Section 2 – Page 2-4
Section 3 – Pages 3-4 & 3-5
Section 4 – Page 4-3 & 4-4
Section 9 – Pages 9-3 & 9-5 thru 9-7
Section 10-1 – Pages 10-1-2 thru 10-1-5 & 10-1-7 thru 10-1-9
Section 10-2 – Pages 10-2-3 & 10-2-13
Section 10-7 – Page 10-7-2 & 10-7-3
Section 10-8 – Pages 10-8-2 thru 10-8-6
Section 10-9 – Page 10-9-1
- February 15, 1997 – Revised.
- June 16, 1997 – Change 2 – Pages Affected:
Cover
Revision Log - Page c
Section 10-1 - Pages 10-1-6, 10-1-9 thru 10-1-11
Section 10-2 - Pages 10-2-3, 10-2-7, 10-2-9 & 10-2-19
Section 10-3 - Pages 10-3-3
Section 10-7 - Pages 10-7-5 & 10-7-7
Section 10-8 - Page 10-8-3
Section 10-10 - Page 10-10-1
- September 15, 1997 – Change 3 – Pages Affected:
Cover

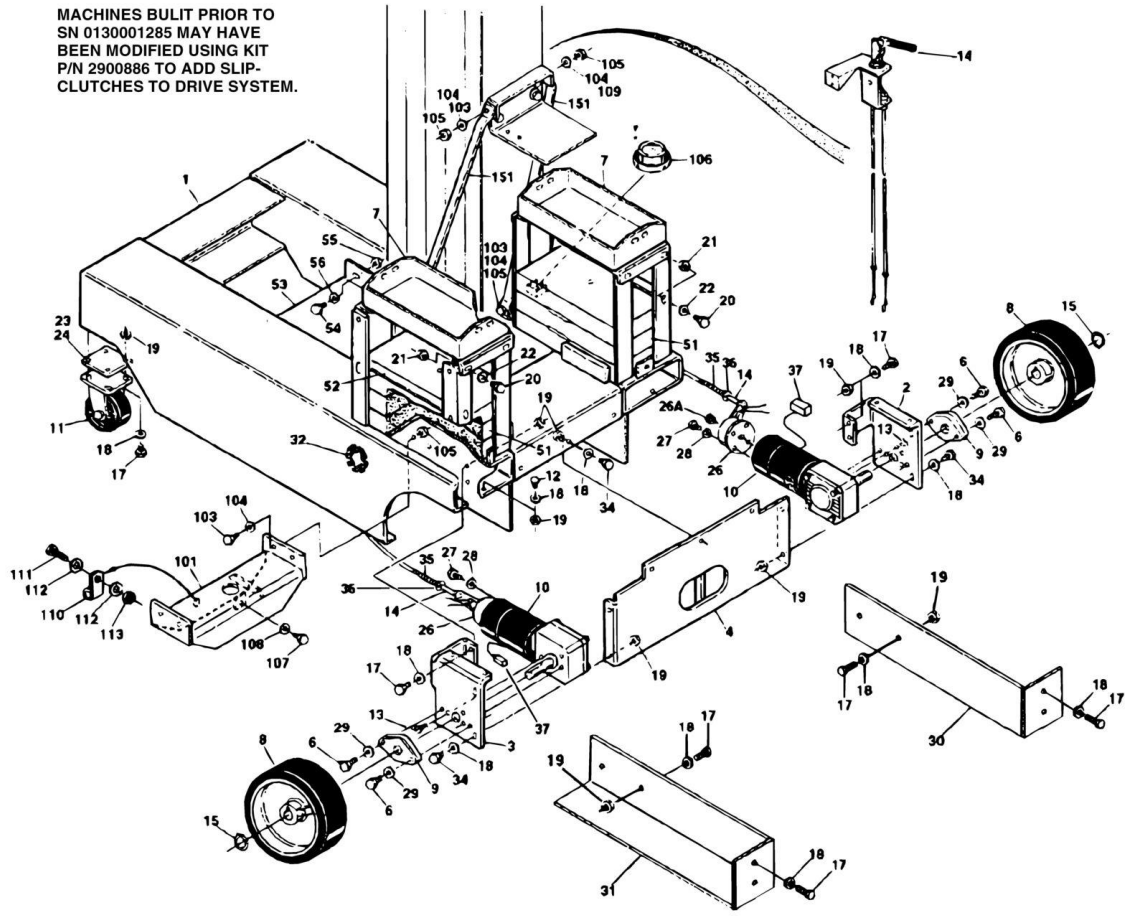
TABLE OF CONTENTS

SECTION 1 - BASE.....	7
FIGURE 1-1. BASE ASSEMBLY (DRIVE WITHOUT SLIP-CLUTCHES) (Prior to SN 0130001285)	8
FIGURE 1-2. BASE ASSEMBLY (DRIVE WITH SLIP-CLUTCHES) (SN 0130001285 to Present)	12
FIGURE 1-3. WHEEL DRIVE MOTOR ASSEMBLY	16
FIGURE 1-4. JLG POTHOLE PROTECTION INSTALLATION	18
SECTION 2 - CONTROLS	21
FIGURE 2-1. GROUND CONTROLS/POWER PACK INSTALLATIONS	22
FIGURE 2-2. PLATFORM CONTROLS AND CABLES INSTALLATIONS	26
FIGURE 2-3. BATTERY CHARGER ASSEMBLIES	30
FIGURE 2-4. PUMP/MOTOR/TANK ASSEMBLIES	34
FIGURE 2-5. OPTION INSTALLATIONS	36
SECTION 3 - MAST	39
FIGURE 3-1. MAST ASSEMBLY 10VP	40
FIGURE 3-2. MAST ASSEMBLY 15VP	44
FIGURE 3-3. MAST ASSEMBLY 20VP	48
FIGURE 3-4. MAST MOUNTED COMPONENTS	52
SECTION 4 - PLATFORM.....	55
FIGURE 4-1. PLATFORM COMPONENTS INSTALLATION	56
FIGURE 4-2. FIBERGLASS PLATFORM INSTALLATION.....	60
SECTION 5 - CYLINDER	63
FIGURE 5-1. LIFT CYLINDER ASSEMBLY	64
SECTION 6 - HYDRAULIC	67
FIGURE 6-1. HYDRAULIC DIAGRAM.....	68
SECTION 7 - ELECTRICAL	71
FIGURE 7-1. ELECTRICAL DIAGRAM - STANDARD	72
FIGURE 7-2. HARNESS AND CABLES INSTALLATION (SHEET 1 OF 2)	74
SECTION 8 - DECALS.....	79
FIGURE 8-1. DECALS INSTALLATION - USA/CANADA.....	80
FIGURE 8-2. DECALS INSTALLATION - JAPANESE/LATIN AMERICAN	82
SECTION 9 - RECOMMENDED SERVICE PARTS STOCK	85
FIGURE 9-1. 10VP/15VP/20VP STANDARD PARTS	86
FIGURE 9-2. 10VP/15VP/20VP VARIABLE PARTS	88
SECTION 10 - SPECIAL OPTIONS.....	89
FIGURE 10-1. SPECIAL OPTIONS.....	90
PART NUMBER INDEX	91

SECTION 1 - BASE

SECTION 1 - BASE

FIGURE 1-1. BASE ASSEMBLY (DRIVE WITHOUT SLIP-CLUTCHES) (Prior to SN 0130001285)



SECTION 1 - BASE

FIGURE 1-1. BASE ASSEMBLY (DRIVE WITHOUT SLIP-CLUTCHES) (Prior to SN 0130001285)

ITEM	PART NUMBER	QTY	DESCRIPTION	REV
		Ref	BASE ASSEMBLY COMPONENTS (DRIVE WITHOUT SLIP-CLUTCHES) (Prior to SN 0130001285)	
		Ref	BASE ASSEMBLY (STANDARD PARTS)	
1	4845123	1	Base Weldment	
2	0181832	1	Angle, Motor Mounting (Right)	
3	0181833	1	Angle, Motor Mounting (Left)	
4	4845248	1	Mount, Motor (Rear)	
6	0641707	4	Bolt 7/16in-14NC x 7/8in	
7	4845258	1	Battery Box Weldment	
8		Ref	Wheel Options:	
8	4860161	2	Polyurethane (Standard)	
8	4860163	2	Non-Marking (Optional)	
9	0440221	2	Bearing	
10	3160212	2	Drive Motor Assembly (See BASE ASSEMBLY (DRIVE WITH SLIP-CLUTCHES) for Breakdown)	
11	4860164	2	Caster Wheel Assembly	
11	4860164	2	Wheel (1 Per Assembly)	
11	4860164	2	Bearing (1 Per Assembly)	
12	0630446	4	Bolt, Carriage	
13	3900221	6	Screw, Flathead	
14	1060639	1	Cable, Brake	
14	4160159	1	Spring, Return (Not Shown - Located under handle)	
15	3760393	2	Ring, Retaining	
17	0641608	20	Bolt 3/8in-16NC x 1in	
18	4751600	44	Flatwasher 3/8in	
19	3311605	21	Locknut 3/8in-16NC	
20	0641406	AR	Bolt 1/4in-20NC x 3/4in	
21	3311405	AR	Locknut 1/4in-20NC	
22	4751400	16	Flatwasher 1/4in	
23	3539659	1	Plate, Spacer 1/8in	
24	3539660	1	Plate, Spacer 5/64in	
26	0256851	2	Brake Assembly	
26	7014117	2	Switch, Micro (1 Per Assembly)	
26	7014118	2	Disc, Friction (1 Per Assembly)	
26A	7014119	2	Gear (1 Per Assembly)	
26A	7014120	4	Setscrew (2 Per Assembly)	
26A	7014122	4	Screw - Brake Release Brkt Mounting (2 Per Assy)	
26A	7014123	4	Locknut - Brake Release Brkt Mounting (2 Per Assy)	
26A	7014124	8	Washer - Brake Release Brkt Mounting (4 Per Assy)	
26A	7014125	4	Spring - Brake Release Brkt Mounting (2 Per Assy)	
27	3930808	8	Capscrew #8-32NC x 1/2in	
28	4750800	8	Flatwasher #8	
29	4711700	4	Flatwasher 7/16in Narrow	
30	4845363	1	Cover, Motor - Right Side	
31	4845364	1	Cover, Motor - Left Side	
32	2820086	7 in/18cm	Loom, Wire	
33	0100035	AR	Loctite #222 (Not Shown)	
34	0641609	16	Bolt 3/8in-16NC x 1 1/8in	
35	4160154	2	Spring, Compression	
36	4751000	2	Flatwasher #10	

SECTION 1 - BASE

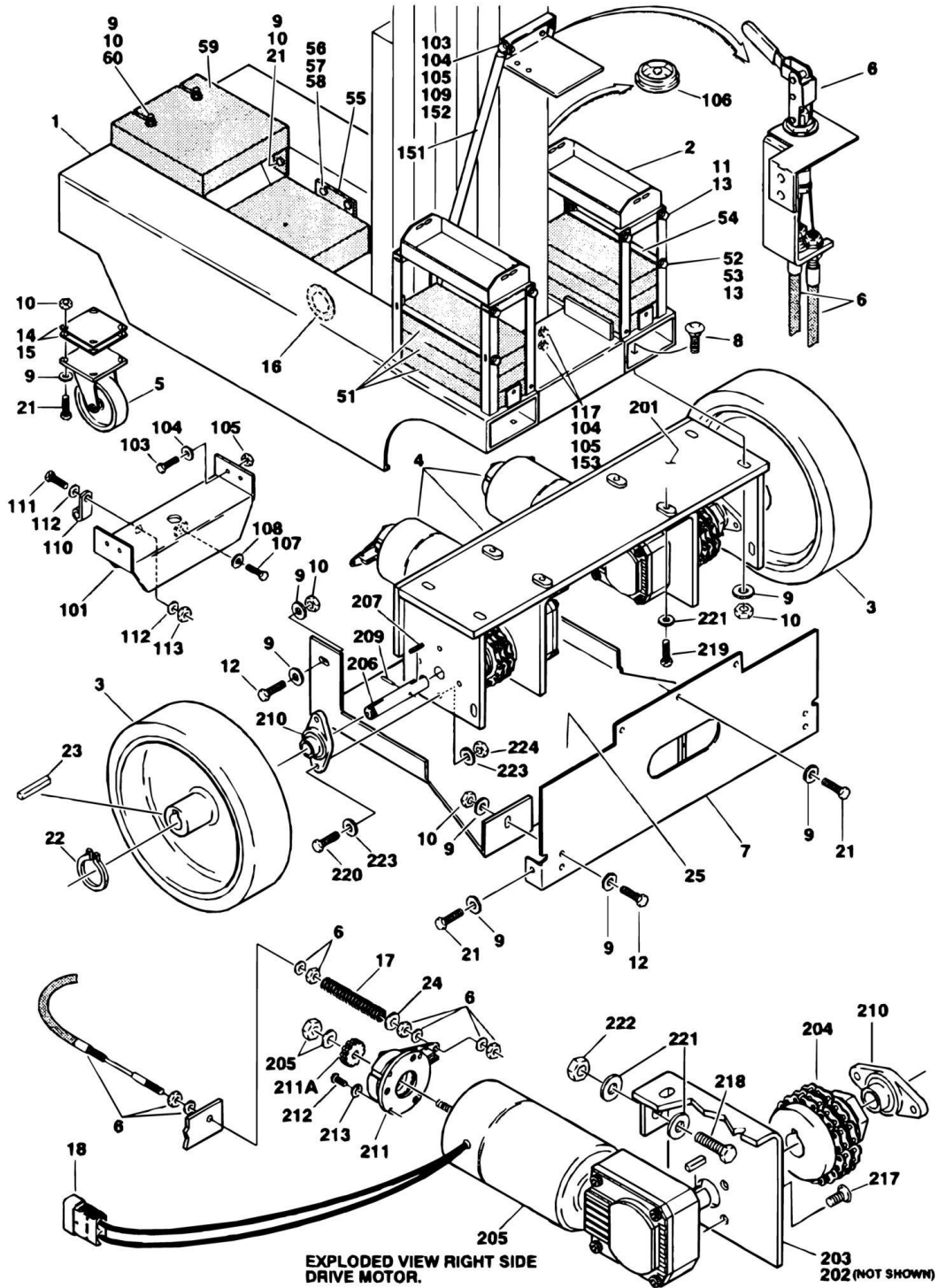
ITEM	PART NUMBER	QTY	DESCRIPTION	REV
37	4460648	2	Connector, Terminal	
38	0100019	AR	Loctite #272 (Not Shown)	
39	0100011	AR	Loctite #242 (Not Shown)	
40	3020017	AR	Grease, Multi-Purpose (Not Shown)	
	0256167	Ref	BASE ASSEMBLY - 10VP (VARIABLE PARTS)	K
51 to 57	Not Required	0	Not Required	
	0256169	Ref	BASE ASSEMBLY - STANDARD 15VP (VARIABLE PARTS)	K
51	4845260	2	Counterweight	
52	0902256	2	Bracket, Counterweight Hold-Down	
53 to 57	Not Required	0	Not Required	
	0256791	Ref	BASE ASSEMBLY - CSA 15VP (VARIABLE PARTS)	D
51	4845260	2	Counterweight	
52	0902256	2	Bracket, Counterweight Hold-Down	
53 to 56	Not Required	0	Not Required	
57	4845401	1	Counterweight - CSA (Not Shown - Located at Rear of Base)	
	0256171	Ref	BASE ASSEMBLY - STANDARD 20VP VARIABLE PARTS	K
51	4845261	2	Counterweight	
52	Not Required	0	Not Required	
53	4845291	1	Counterweight	
54	0641810	4	Bolt 1/2in-13NC x 1 1/4in	
55	3311805	4	Locknut 1/2in-13NC	
56	4751800	8	Flatwasher 1/2in	
57	Not Required	0	Not Required	
	0256792	Ref	BASE ASSEMBLY - CSA 20VP (VARIABLE PARTS)	D
51	4845261	2	Counterweight	
52	Not Required	0	Not Required	
53	4845291	1	Counterweight	
54	0641810	4	Bolt 1/2in-13NC x 1 1/4in	
55	3311805	4	Locknut 1/2in-13NC	
56	4751800	8	Flatwasher 1/2in	
57	4821228	1	Counterweight - CSA (Not Shown - Located at Rear of Base)	
		Ref	MAST SUPPORT INSTALLATION (STANDARD PARTS)	
101	4845247	1	Channel, Lift Cylinder Mounting	
103	0641609	11	Bolt 3/8in-16NC x 11/8in	
104	4751600	24	Flatwasher 3/8in	
105	3311605	12	Locknut 3/8in-16NC	
106	2420140	1	Gauge, Level	
107	0641505	1	Bolt 5/16in-18NC x 5/8in	
108	4711500	1	Flatwasher 5/16in Narrow	
109	0641612	1	Bolt 3/8in-16NC x 1 1/2in	
110	1320041	1	Clamp	
111	0641404	1	Bolt 1/4in-20NC x 1/2in	
112	4711400	2	Flatwasher 1/4in Narrow	
113	3311401	1	Nut 1/4in-20NC	
114	0100011	AR	Loctite #242 (Not Shown)	
	0256197	Ref	MAST SUPPORT INSTALLATION - STANDARD MACHINE (VARIABLE PARTS)	B
151	0880124	2	Brace	
152 to 153	Not Required	0	Not Required	
	0256793	Ref	MAST SUPPORT INSTALLATION - CSA MACHINES (VARIABLE PARTS)	B
151	0880125	2	Brace	

SECTION 1 - BASE

ITEM	PART NUMBER	QTY	DESCRIPTION	REV
152	4700952	1	Shim .03 (Not Shown)	
153	4700953	2	Shim .06 (Not Shown)	
153	4700954	2	Shim .03 (Not Shown)	

SECTION 1 - BASE

FIGURE 1-2. BASE ASSEMBLY (DRIVE WITH SLIP-CLUTCHES) (SN 0130001285 to Present)



SECTION 1 - BASE

FIGURE 1-2. BASE ASSEMBLY (DRIVE WITH SLIP-CLUTCHES) (SN 0130001285 to Present)

ITEM	PART NUMBER	QTY	DESCRIPTION	REV
		Ref	BASE ASSEMBLY COMPONENTS (DRIVE WITH SLIP-CLUTCHES) (SN 0130001285 to Present)	
		Ref	BASE ASSEMBLY (STANDARD PARTS)	
1	4845479	1	Base Weldment	
2	4845258	2	Battery Box Weldment	
3	Kit	2	Wheel Options:	
3	4860161	2	Polyurethane (Standard)	
3	4860163	2	Non-Marking (Optional)	
4	0257241	1	Drive Assembly - Rear (See Items 201-224 for Breakdown)	
5	4860164	2	Caster Wheel Assembly	
5	7016619	2	Bearing (1 Per Assembly)	
6	1060639	1	Cable, Brake	
6	4160159	1	Spring, Return (Not Shown - Located under handle)	
7	4845474	1	Rear Plate Weldment	
8	0630446	4	Bolt, Carriage 3/8in-16NC x 1in	
9	4751600	AR	Flatwasher 3/8in	
10	3311605	AR	Locknut 3/8in-16NC	
11	0641406	8	Bolt 1/4in-20NC x 3/4in	
12	0641609	4	Bolt 3/8in-16NC x 1 1/8in	
13	4751400	AR	Flatwasher 1/4in	
14	3539659	1	Plate, Spacer 1/8in	
15	3539660	1	Plate, Spacer 5/64in	
16	2820086	4 in/10cm	Loom, Wire	
17	4160154	2	Spring, Compression	
18	4460648	2	Connector, Terminal	
19	3020017	AR	Grease, Multi-Purpose (Not Shown)	
20	0100011	AR	Loctite #242 (Not Shown)	
21	0641608	AR	Bolt 3/8in-16NC x 1in	
22	3760393	2	Ring, Retainer	
23	2860026	2	Key, Wheel	
24	4751000	2	Flatwasher #10	
25	3570172	1	Cover, Motor	
	0257230	Ref	BASE ASSEMBLY - 10VP (VARIABLE PARTS)	2
51 to 60	Not Required	0	Not Required	
	0257229	Ref	BASE ASSEMBLY - STANDARD 15VP (VARIABLE PARTS)	2
51	4845260	2	Counterweight	
52	0641408	8	Bolt 1/4in-20NC x 1in	
53	3311605	16	Locknut 3/8in-16NC	
54	0902256	2	Bracket, Counterweight Hold-Down	
55 to 60	Not Required	0	Not Required	
	0257237	Ref	BASE ASSEMBLY - CSA 15VP (VARIABLE PARTS)	2
51	4845260	2	Counterweight	
52	0641408	8	Bolt 1/4in-20NC x 1in	
53	3311605	16	Locknut 3/8in-16NC	
54	0902256	2	Bracket, Counterweight Hold-Down	
55 to 58	Not Required	0	Not Required	
59	4845401	1	Counterweight - CSA	
60	0630512	2	Bolt, Carriage 3/8in-16NC x 2 3/4in	
	0257228	Ref	BASE ASSEMBLY - STANDARD 20VP (VARIABLE PARTS)	2
51	4845261	2	Counterweight	

SECTION 1 - BASE

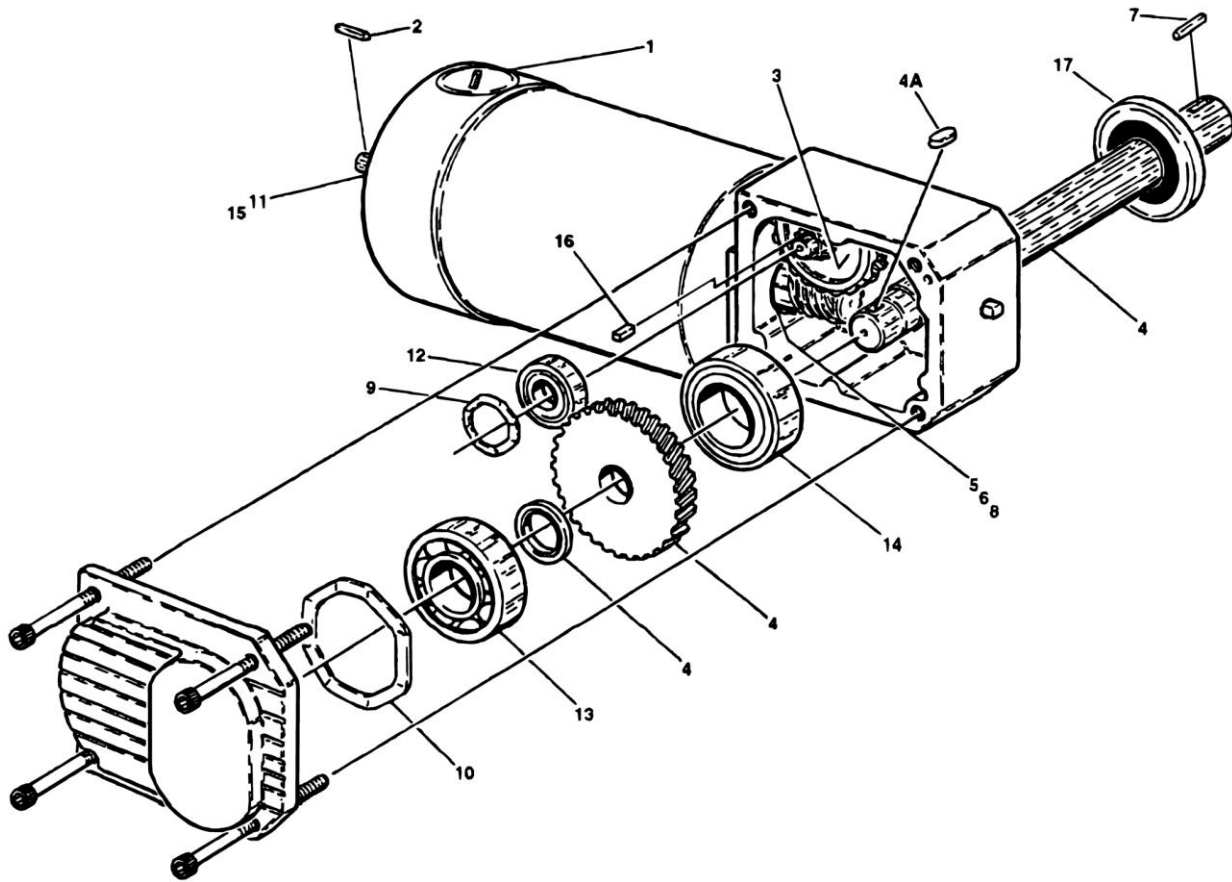
ITEM	PART NUMBER	QTY	DESCRIPTION	REV
52 to 54	Not Required	0	Not Required	
55	4845291	1	Counterweight	
56	0641810	4	Bolt 1/2in-13NC x 1 1/4in	
57	3311805	4	Locknut 1/2in-13NC	
58	4751800	8	Flatwasher 1/2in	
59 to 60	Not Required	0	Not Required	
	0257228	Ref	BASE ASSEMBLY - CSA 20VP (VARIABLE PARTS)	2
51	4845261	2	Counterweight	
52 to 54	Not Required	0	Not Required	
55	4845291	1	Counterweight	
56	0641810	4	Bolt 1/2in-13NC x 1 1/4in	
57	3311805	4	Locknut 1/2in-13NC	
58	4751800	8	Flatwasher 1/2in	
59	4821228	1	Counterweight - CSA	
60	0641634	2	Bolt 3/8in-16NC x 4 1/4in	
		Ref	MAST SUPPORT INSTALLATION (STANDARD PARTS)	
101	4845478	1	Channel, Lift Cylinder Mounting	
103	0641609	11	Bolt 3/8in-16NC x 11/8in	
104	4751600	24	Flatwasher 3/8in	
105	3311605	12	Locknut 3/8in-16NC	
106	2420140	1	Gauge, Level	
107	0641505	1	Bolt 5/16in-18NC x 5/8in	
108	4711500	1	Flatwasher 5/16in Narrow	
109	0641612	1	Bolt 3/8in-16NC x 1 1/2in	
110	1320041	1	Clamp	
111	0641404	1	Bolt 1/4in-20NC x 1/2in	
112	4711400	2	Flatwasher 1/4in Narrow	
113	3311401	1	Nut 1/4in-20NC	
114	0100011	AR	Loctite #242 (Not Shown)	
	0256197	Ref	MAST SUPPORT INSTALLATION - STANDARD MACHINE (VARIABLE PARTS)	3-C
151	0880124	2	Brace	
152 to 153	Not Required	0	Not Required	
	0256793	Ref	MAST SUPPORT INSTALLATION - CSA MACHINES (VARIABLE PARTS)	3-C
151	0880125	2	Brace	
152	4700952	2	Shim .03 (Not Shown)	
153	4700953	2	Shim .06 (Not Shown)	
153	4700954	2	Shim .03 (Not Shown)	
	0257241	Ref	DRIVE ASSEMBLY - REAR	3-C
201	4845473	1	Drive Attachment Weldment	
202	3570168	1	Plate, Motor Mounting - Left	
203	3570169	1	Plate, Motor Mounting - Right	
204	1400126	2	Slip-Clutch	
204	7016685	2	Bearing (1 Per Assembly)	
205	3160217	2	Wheel Drive Motor Assembly (See WHEEL DRIVE MOTOR ASSEMBLY for Breakdown)	
206	4040259	2	Shaft, Drive	
207	2860027	2	Key, Clutch	
209	3440520	2	Rollpin	
210	0440221	4	Bearing, Flange	
211	0256851	2	Brake Assembly	

SECTION 1 - BASE

ITEM	PART NUMBER	QTY	DESCRIPTION	REV
211	7014117	2	Switch, Micro (1Per Assembly)	
211	7014118	2	Disc, Friction (1Per Assembly)	
211A	7014119	2	Gear (1Per Assembly)	
211A	7014120	4	Setscrew(2 Per Assembly)	
212	3930808	8	Capscrew #8-32NC x 1/2in	
213	4750800	8	Flatwasher #8	
214	0100035	AR	Loctite #222 (Not Shown)	
215	0100011	AR	Loctite #242 (Not Shown)	
216	0100019	AR	Loctite #272 (Not Shown)	
217	3900221	6	Capscrew, Counterstrunk Socket Head 5/16in-18NC x 3/4in	
218	0641610	2	Bolt 3/8in-16NC x 1 1/4in	
219	0641609	4	Bolt 3/8in-16NC x 1in	
220	0641711	8	Bolt 7/16in-14NC x 1 3/8in	
221	4751600	8	Flatwasher 3/8in	
222	3311605	2	Locknut 3/8in-16NC	
223	4711700	16	Flatwasher 7/16in Narrow	
224	3311705	8	Locknut 7/16in-14NC	

SECTION 1 - BASE

FIGURE 1-3. WHEEL DRIVE MOTOR ASSEMBLY



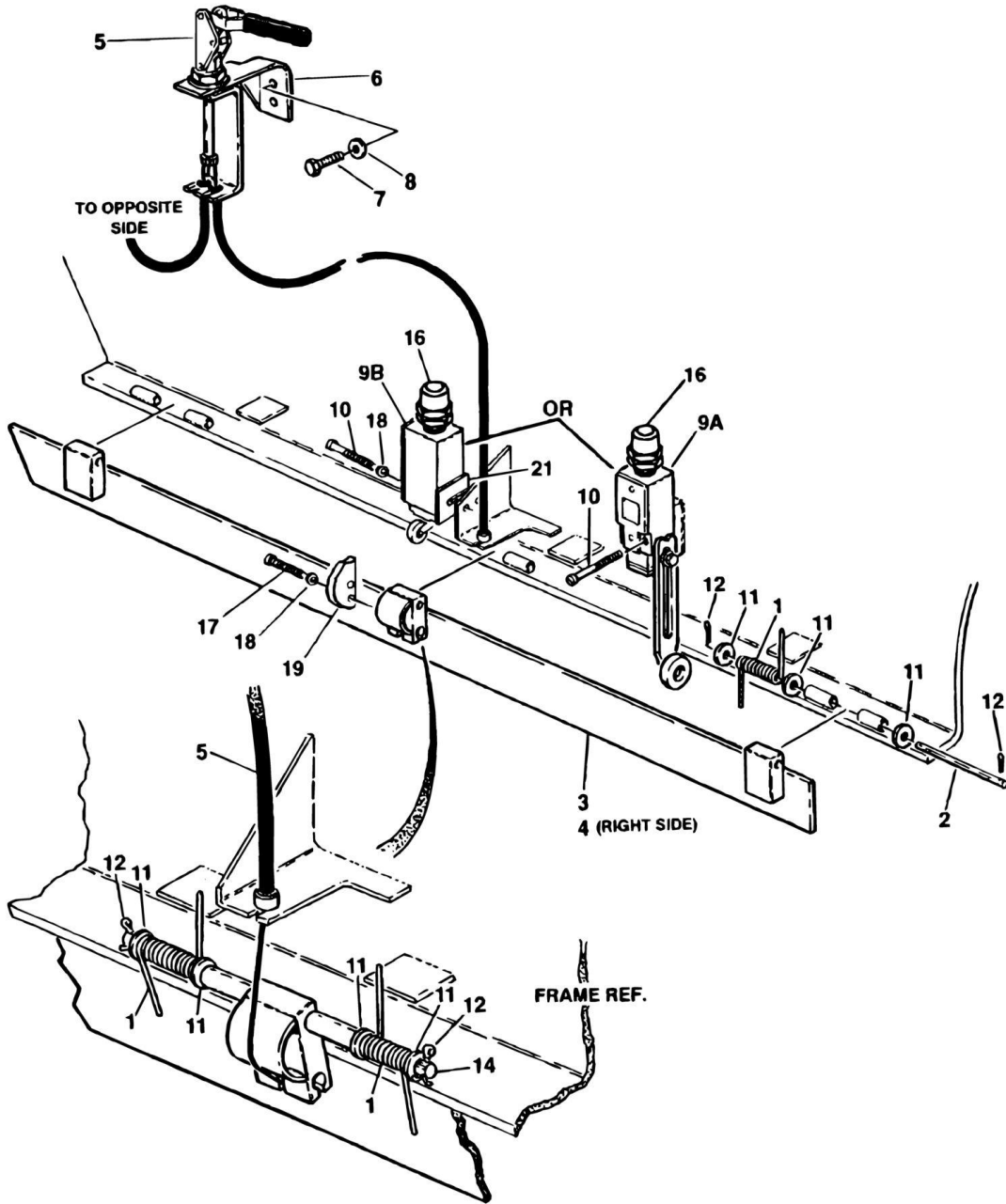
SECTION 1 - BASE

FIGURE 1-3. WHEEL DRIVE MOTOR ASSEMBLY

ITEM	PART NUMBER	QTY	DESCRIPTION	REV
		Ref	DRIVE MOTOR ASSEMBLY	
	3160212	Ref	DRIVE MOTOR ASSY (DRIVE WITHOUT SLIP-CLUTCH)	F
1	7018000	1	Brush Kit	
2	7018001	1	Key, Shaft	
3	7018002	1	Gear and Pinion Assembly	
4	7018003	1	Gear and Drive Shaft Assembly	
4A	7018007	1	Key, Shaft	
5	7018004	1	Seal, Lip	
6	7018005	1	Ring, Retainer	
7	2680025	1	Key, Shaft (5/8in Length)	
8	7018008	2	Bearing	
9	7018009	1	Washer, Wavy	
10	7018010	1	Washer, Wavy	
11	7018011	1	Washer, Wavy	
12	7018012	2	Bearing 32mm x 12mm x 10mm	
13	7018013	1	Bearing 47mm x 20mm x 14mm	
14	7018014	1	Bearing 47mm x 25mm x 12mm	
15	Consult Factory	1	Bearing	
16	7018015	1	Key	
17	7018026	1	Seal, Lip	
	3160217	Ref	DRIVE MOTOR ASSEMBLY (DRIVE WITH SLIP-CLUTCH)	D
1	7018000	1	Brush Kit	
2	7018001	1	Key, Shaft	
3	7018002	1	Gear and Pinion Assembly	
4	7018019	1	Gear and Drive Shaft Assembly	
4A	Consult Factory	1	Key, Shaft	
5	7018004	1	Seal, Lip	
6	7018005	1	Ring, Retainer	
7	2860028	1	Key, Shaft	
8	7018008	2	Bearing	
9	7018009	1	Washer, Wavy	
10	7018010	1	Washer, Wavy	
11	7018011	1	Washer, Wavy	
12	7018012	2	Bearing 32mm x 12mm x 10mm	
13	7018013	2	Bearing 47mm x 20mm x 14mm	
14	7018014	1	Bearing 47mm x 20mm x 12mm	
15	Consult Factory	1	Bearing	
16	Consult Factory	1	Key	
17	7018026	1	Seal, Lip	

SECTION 1 - BASE

FIGURE 1-4. JLG POTHOLE PROTECTION INSTALLATION



SECTION 1 - BASE

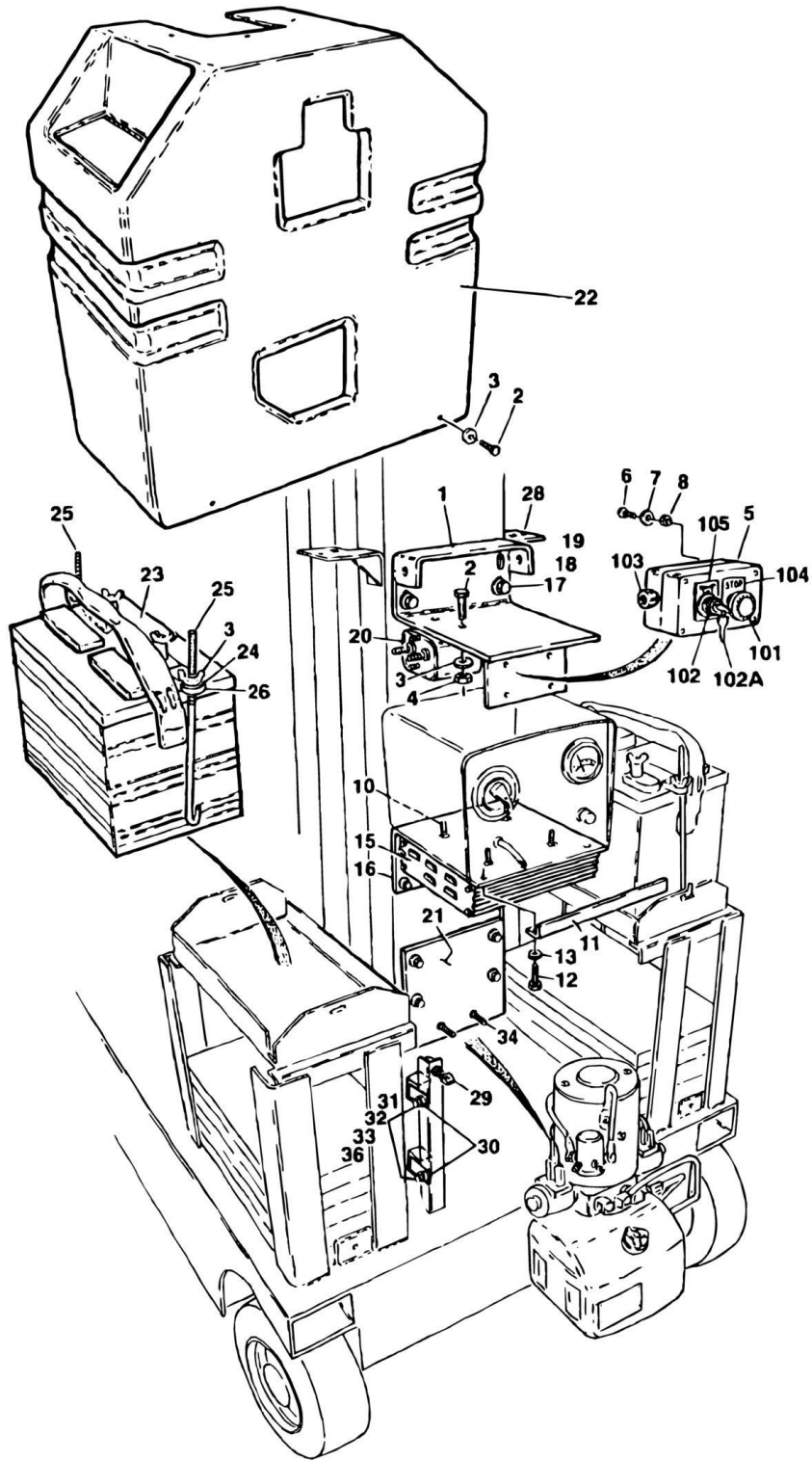
FIGURE 1-4. JLG POTHOLE PROTECTION INSTALLATION

ITEM	PART NUMBER	QTY	DESCRIPTION	REV
	0256088	Ref	JLG POTHOLE PROTECTION INSTALLATION	D
1	4160158	8	Spring, Torsion	
2	3422585	4	Pin, Hinge	
3	Kit	1	Pothole Protector Weldment (Right Side)	
3	4845244	1	Pothole Protector Weldment (Right Side) (Prior to SN 013000573)	
3	4845397	1	Pothole Protector Weldment (Right Side) (SN 013000574 to Present)	
4	Kit	1	Pothole Protector Weldment (Left Side)	
4	4845245	1	Pothole Protector Weldment (Left Side) (Prior to SN 013000573)	
4	4845396	1	Pothole Protector Weldment (Left Side) (SN 013000574 to Present)	
5	1060638	1	Cable	
6	0902262	1	Cable Attach Weldment	
7	0641404	2	Bolt 1/4in-20NC x 1/2in	
8	4711400	2	Flatwasher 1/4in Narrow	
9	Kit	AR	Switch, Limit	
9A	4360397	AR	Switch, Limit (Prior to SN 013000502)	
9B	4360401	AR	Switch, Limit (SN 013000503 to Present)	
10	3910624	4	Screw #6-32NC x 1 1/2in	
11	4751000	12	Flatwasher #10	
12	3450302	12	Pin, Cotter 3/32in x 1/2in	
13	3020017	AR	Grease, Multi-Purpose	
14	3422586	2	Pin, Hinge	
15	0100011	AR	Loctite #242 (Not Shown)	
16	4460662	2	Connector, Strain Relief	
17	3910610	4	Screw #6-32NC x 5/8in	
18	4750600	8	Flatwasher #6	
19	1100100	2	Cam	
20	0100035	AR	Loctite #222 (Not Shown)	
21	3539939	2	Plate, Shim	
22	4761000	4	Lockwasher #10	
23	4240032	2	Tie-Strap (Not Shown)	

SECTION 2 - CONTROLS

SECTION 2 - CONTROLS

FIGURE 2-1. GROUND CONTROLS/POWER PACK INSTALLATIONS



SECTION 2 - CONTROLS

FIGURE 2-1. GROUND CONTROLS/POWER PACK INSTALLATIONS

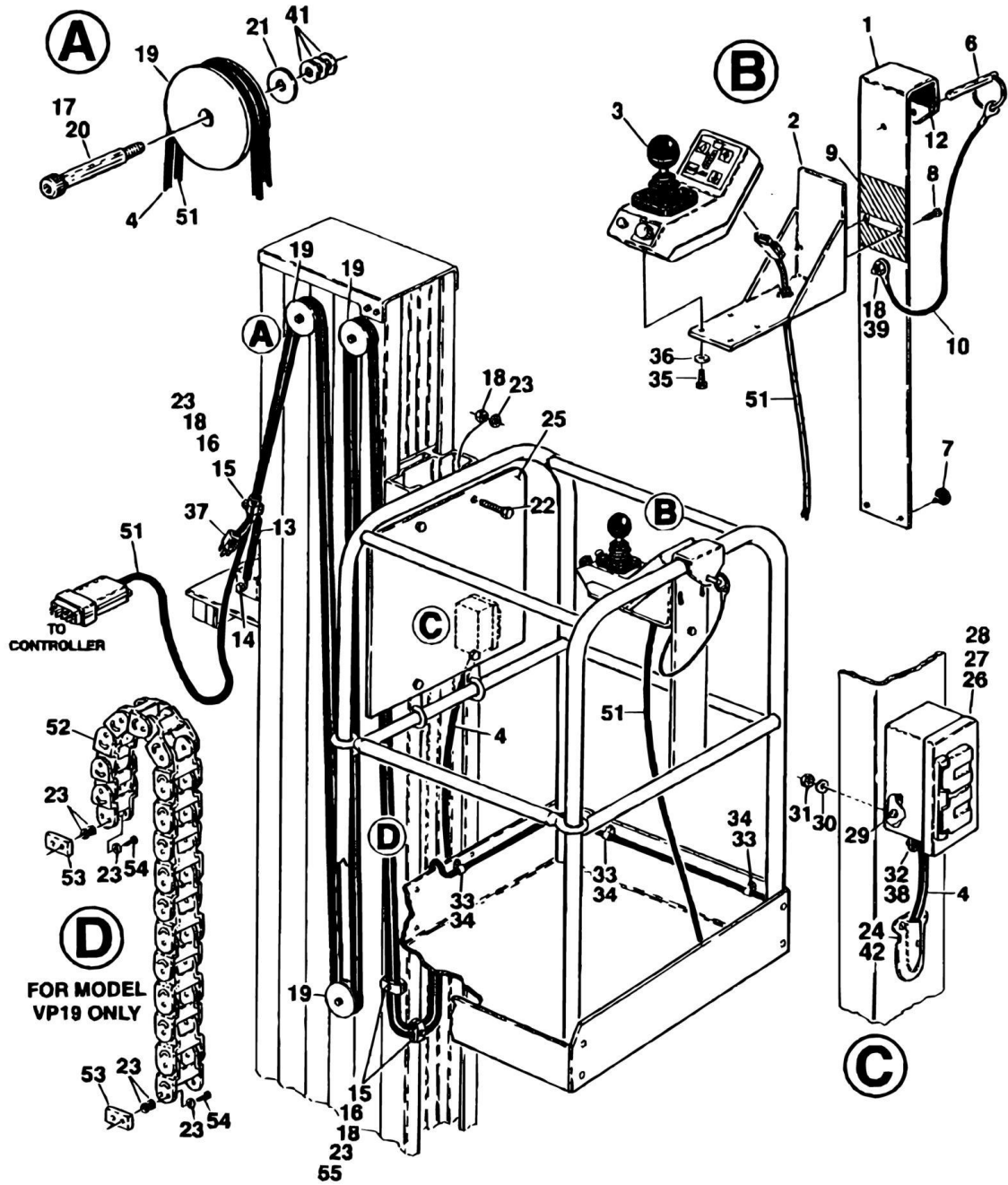
ITEM	PART NUMBER	QTY	DESCRIPTION	REV
		Ref	GROUND CONTROLS/POWER PACK INSTALLATIONS	
	0256143	Ref	GROUND CONTROLS/POWER PACK INSTALLATION	8
	0256912	Ref	CSA COMPONENTS INSTALLATIONS	-
	0256926	Ref	CSA COMPONENTS INSTALLATIONS	-
	0256928	Ref	CSA COMPONENTS INSTALLATIONS	-
1	0902248	1	Bracket, Ground Controls	
1	3570094	1	Plate, Hood Mounting (CSA Only)	
2	0641406	9	Bolt 1/4in-20NC x 3/4in	
3	4751400	19	Flatwasher 1/4in	
4	3311405	2	Locknut 1/4in-20NC	
5	0861039	1	Ground Control Assembly (See Items 101-105 For Breakdown)	
6	3910812	4	Screw, Machine #8-32NC x 3/4in	
7	4750800	8	Flatwasher #8	
8	3310805	4	Locknut #8-32NC	
10	0741407	4	Screw, Flathead 1/4in-20NC x 7/8in	
11	0181857	1	Angle	
12	0641406	4	Bolt 1/4in-20NC x 3/4in	
13	4711400	4	Flatwasher 1/4in Narrow	
14	0100011	1 AR	Loctite #242	
15	1600238	1	Controller Assembly	
		Ref	Note: Alum Colored Controllers are interchangeable. Black Colored Controllers are not available and not interchangeable with Alum Colored Controllers. Consult Factory for replacement.	
15	2900868	1	Controller Configuration Kit	
16	0902250	1	Bracket, Battery Charger	
17	0641608	10	Bolt 3/8in-16NC x 1in	
18	4751600	20	Flatwasher 3/8in	
19	3311605	10	Locknut 3/8in-16NC	
20	3740120	1	Relay	
21	3539565	1	Plate, Pump Mounting	
22	2680432	1	Hood	
23	0400122	2	Battery (Wet)	
23	Consult Factory	2	Battery (Dry)	
24	3300202	4	Wingnut 1/4in-20NC	
25	0630504	4	J-Bolt	
26	0362604	2	Bar, Hold-Down (Prior to SN 0130001409)	
26	0362658	2	Bar, Hold-Down (SN 0130001409 to Present)	
28	4845266	1	Bracket, Brake Release	
29	4360314	1	Switch, Ground	
30	3740069	2	Relay	
31	3911010	2	Screw, Machine #10-24NC x 3/4in	
32	4751000	4	Flatwasher #10	
33	3311001	2	Nut #10-24NC	
34	0741605	2	Screw, Countersunk 3/8-16NC x 5/8in	
35	0100051	AR	Grease, Battery (Not Shown)	
36	4761000	2	Lockwasher #10	
	0861039	Ref	GROUND CONTROL ASSEMBLY	A
101	7017701	1	Switch, Push-Turn to Reset (Emergency Stop)	
101	7017703	2	Block, Contact - N.C.	
101	7017715	1	Button - Red	

SECTION 2 - CONTROLS

ITEM	PART NUMBER	QTY	DESCRIPTION	REV
102	7017700	1	Switch, Key (Lift)	
102	7017702	2	Block, Contact - N.O	
102A	7017704	1 set	Key, Replacement	
103	Kit	1	Strain Relief Connector Options:	
103	7012637	1	Connector, Strain Relief (CG16)	
103	7017713	1	Connector, Strain Relief (CG20)	
104	7017706	1	Nameplate - Emergency Stop	
105	7017705	1	Nameplate - Select	

SECTION 2 - CONTROLS

FIGURE 2-2. PLATFORM CONTROLS AND CABLES INSTALLATIONS



SECTION 2 - CONTROLS

FIGURE 2-2. PLATFORM CONTROLS AND CABLES INSTALLATIONS

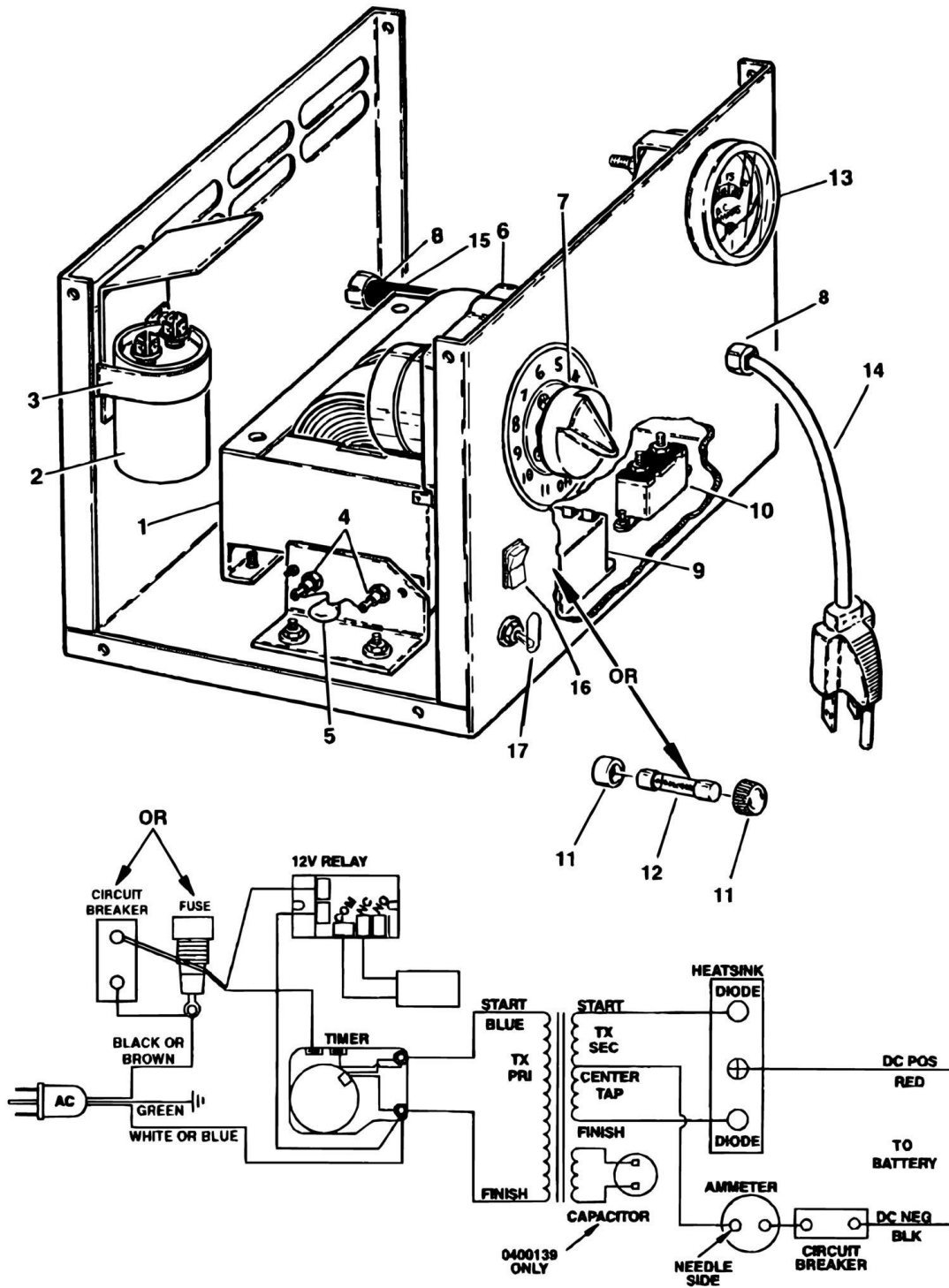
ITEM	PART NUMBER	QTY	DESCRIPTION	REV
		Ref	PLATFORM CONTROLS AND CABLES INSTALLATIONS	
		Ref	PLATFORM CONTROLS AND CABLES INSTALLATION (STANDARD PARTS)	
1	4845339	1	Plate, Control Mounting	
2	4845265	1	Bracket, Control Box Mounting	
3	Kit	1	Platform Control Box Assembly Options:	
3	See Note	1	Platform Control Box Assembly (SN 013000001 through 013000033, SN 013000060 through 013000085, including 013000041)	
		Ref	Note: 1600237 Box (Metallic/Front Plug in) is not longer available. Replace with 1600243 Box (Black Plastic/Rear Plug in) and Newer Style Platform Harness. See heading at top of Items 101-107 of this Parts List for Harness List.	
3	1600243		Platform Control Box Assembly (SN 013000034 through 013000040, SN 01000042 through 013000059, SN 013000086 to Present)	
4	1060564	AR	Cable, Electrical	
4	1060564	13.5 ft/4.m	Cable, Electrical 10VP	
4	1060564	19 ft/5.8m	Cable, Electrical 15VP	
4	1060564	23 ft/7m	Cable, Electrical 20VP	
6	3422551	1	Pin, Hitch	
7	0940074	2	Bumper	
8	3900228	2	Screw, Shoulder #4-40NC	
9	4420055	6 in/15cm	Tape	
10	1060380	1	Cable, Lanyard	
12	4280296	9 in/23cm	Pad, Wear	
13	4160130	1	Spring, Extension	
14	3311605	1	Locknut 3/8in-16NC	
15	1320238	3	Clamp	
16	0641410	3	Bolt 1/4in-20NC x 1 1/4in	
17	0100019	AR	Loctite #271	
18	3311405	AR	Locknut 1/4in-20NC	
19	3580231	AR	Sheave, Cable	
19	3580231	1	Sheave, Cable 10VP & 15VP	
19	3580231	3	Sheave, Cable 20VP	
20	3900200	AR	Screw, Shoulder 5/16-18NC x 1 1/4in	
21	4751500	AR	Flatwasher 5/16in	
22	0641406	4	Bolt 1/4in-20NC 3/4in	
23	4711400	AR	Flatwasher 1/4in Narrow	
24	4460566	1	Connector, Strain Relief - 90	
25	3380424	1	Panel, Control	
26	0860946	1	Box, Electrical	
27	4460190	1	Receptacle, Electrical	
28	4060092	1	Cover, Weatherproof	
29	0721005	2	Screw, Machine #10-24NC x 5/8in	
30	4761000	2	Lockwasher #10	
31	3311001	2	Nut #10-24NC	
32	4460023	1	Connector, Strain Relief	
33	1320227	7	Clamp, Cable	
34	1020008	7	Button, Nylon	
35	3900212	4	Screw, Machine #4-40NC x 3/8in	

SECTION 2 - CONTROLS

ITEM	PART NUMBER	QTY	DESCRIPTION	REV
36	4750400	4	Flatwasher #4	
37	Supply Locally	1	Plug, Electrical	
38	0960407	1	Bushing	
39	0641404	1	Bolt 1/4in-20NC x 1/2in	
40	0100011	AR	Loctite #242 (Not Shown)	
41	4751000	3	Flatwasher #10	
42	3300047	1	Nut, Conduit	
	0256133	Ref	PLATFORM CONTROLS AND CABLES INSTALLATION - 10VP (VARIABLE PARTS)	10
51	4921815	1	Platform Console Harness Assembly (See ELECTRICAL SECTION for Breakdown)	
52 to 55	Not Required	0	Not Required	
	0256132	Ref	PLATFORM CONTROLS AND CABLES INSTALLATION - 15VP (VARIABLE PARTS)	10
51	4921812	1	Platform Console Harness Assembly (See ELECTRICAL SECTION for Breakdown)	
52	1180344	1	Carrier	
53	3539612	2	Plate, Spacer	
54	0641408	4	Bolt 1/4in-20NC x 1in	
55	0641416	1	Bolt 1/4in-20NC x 2in	
	0256134	Ref	PLATFORM CONTROLS AND CABLES INSTALLATION - 20VP (VARIABLE PARTS)	10
51	4921816	1	Platform Console Harness Assembly (See ELECTRICAL SECTION for Breakdown)	
52 to 55	Not Required	0	Not Required	

SECTION 2 - CONTROLS

FIGURE 2-3. BATTERY CHARGER ASSEMBLIES



SECTION 2 - CONTROLS

FIGURE 2-3. BATTERY CHARGER ASSEMBLIES

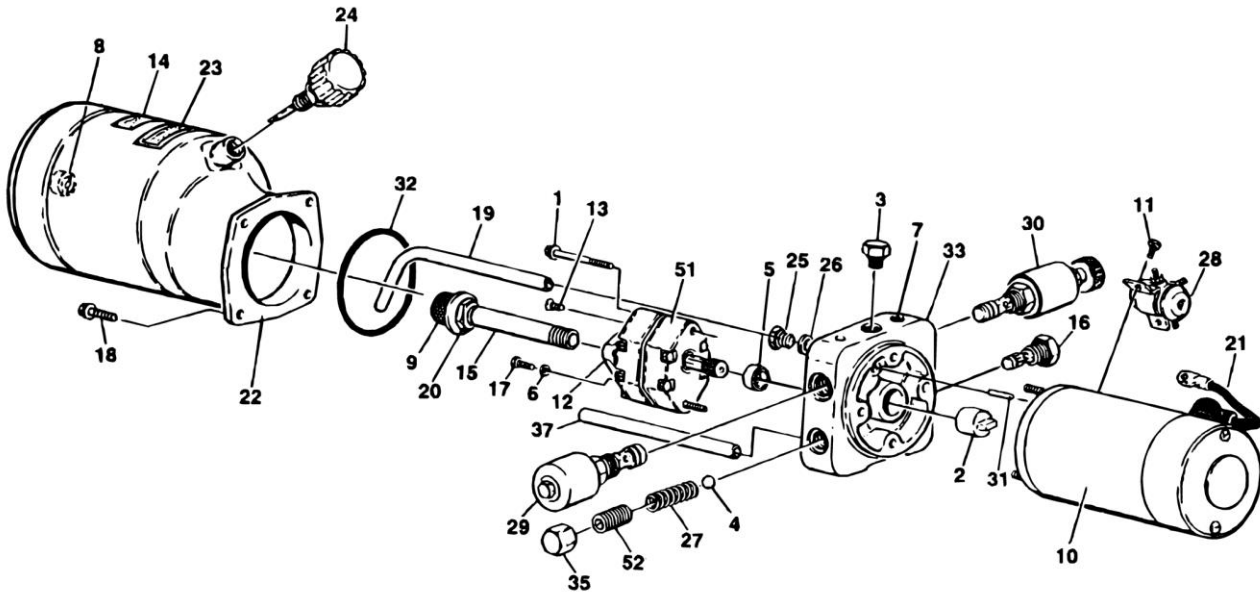
ITEM	PART NUMBER	QTY	DESCRIPTION	REV
		Ref	BATTERY CHARGER ASSEMBLIES	
		Ref	Note: Battery Charger Serial Number Nameplate located on front of charger. To decode bulld date, look at first line for Charger Spec and Date Code. (Prior to Mid-February 1996) Example: BA515 (Spec) AT (Date Code).	
		Ref	First letter in the Date Code indicates month (A-January/B-February/C-March/etc. with exception of the letter "1" which is not used). Second Letter indicates year (P-1944/S-1995/T-1996). (mid-February 1996 to present) example: BA515 (Spec) 9631 (Date Code). First and Second digits in the Date Code indicates year. Third and fourth digits indicate the week of manufacture.	
	0400139	Ref	BATTERY CHARGER ASSEMBLY - 120VAC/60HZ (BA863 CHARGER SPEC PRIOR TO DATE CODE 9648)	B
1	7011693	1	Transformer	
2	7011692	1	Capacitor	
3	7011542	1	Strap, Capacitor	
4	7011559	2	Diode	
5	7011596	1	Varistor	
6	7011639	1	Timer	
7	7011505	1	Knob, Timer	
8	7011528	2	Connector, Strain Relief	
9	7011690	1	Relay (Prior to Date Code 9614)	
9	7018506	1	Relay (Date Code 9614 to Present)	
10	7011509	1	Breaker, Circuit	
11	7011507	1	Holder, Fuse	
12	7011548	1	Fuse - 10 Amp	
13	7011691	1	Ammeter	
14	7011698	1	AC Cord Assembly	
15	7018505	1	DC Harness Assembly	
16 to 17	Not Required	0	Not Required	
	0400154	Ref	BATTERY CHARGER ASSEMBLY - 120VAC/60HZ (BA863 CHARGER SPEC DATE CODE 9648 TO PRESENT)	A
1	7011693	1	Transformer	
2	7011692	1	Capacitor	
3	7011542	1	Strap, Capacitor	
4	7011559	2	Diode	
5	7011596	1	Varistor	
6	7011639	1	Timer	
7	7011505	1	Knob, Timer	
8	7011528	2	Connector, Strain Relief	
9	7018506	1	Relay	
10	7011509	1	Breaker, Circuit - DC	
11	Not Required	0	Not Required	
12	Not Required	0	Not Required	
13	7011691	1	Ammeter	
14	7011698	1	AC Cord Assembly	
15	7018505	1	DC Harness Assembly	
16	7018514	1	Breaker, Circuit - AC	
17	Not Required	0	Not Required	
	0400152	Ref	BATTER CHARGER ASSEMBLY - 200-240VAC/50HZ (BA864 CHARGER SPEC)	A
1	7018534	1	Transformer	

SECTION 2 - CONTROLS

ITEM	PART NUMBER	QTY	DESCRIPTION	REV
2	7011692	1	Capacitor	
3	7011560	1	Strap, Capacitor	
4	7011559	2	Diode	
5	7018537	1	Varistor	
6	7011636	1	Timer	
7	7011505	1	Knob, Timer	
8	7011528	2	Connector, Strain Relief	
9	7018535	1	Relay	
10	7011509	1	Breaker, Circuit	
11	Not Required	0	Not Required	
12	Not Required	0	Not Required	
13	7011691	1	Ammeter	
14	7018515	1	AC Cord Assembly	
15	7018505	1	DC Harness Assembly	
16	7018536	1	Breaker, Circuit - AC	
17	Not Required	0	Not Required	
	0400142	Ref	BATTERY CHARGER ASSEMBLY - 100VAC/50-60HZ (BA856 CHARGER SPEC)	A
1	7011696	1	Transformer	
4	7011559	2	Diode	
5	7011596	1	Varistor	
6	7011639	1	Timer	
7	7011505	1	Knob, Timer	
8	7011528	2	Connector, Strain Relief	
9	701690	1	Relay	
10	7011509	1	Breaker, Circuit - DC	
11	7011507	1	Holder, Fuse	
12	7011548	1	Fuse - 10 Amp	
13	7011691	1	Ammeter	
14	7011698	1	AC Cord Assembly	
15	7018505	1	DC Harness Assembly	
16 to 17	Not Required	0	Not Required	
	0400155	Ref	BATTERY CHARGER ASSEMBLY - 100VAC/50-60HZ (BA983 CHARGER SPEC)	A
1	7018541	1	Transformer	
2	7011692	1	Capacitor	
3	7011542	1	Strap, Capacitor	
4	7011559	2	Diode	
5	7011596	1	Varistor	
6	7011639	1	Timer	
7	7011505	1	Knob, Timer	
8	7011528	2	Connector, Strain Relief	
9	7018506	1	Relay	
10	7011509	1	Breaker, Circuit - DC	
11	Not Required	0	Not Required	
12	Not Required	0	Not Required	
13	7011691	1	Ammeter	
14	Consult Factor	1	AC Cord Assembly	
15	7018505	1	DC Harness Assembly	
16	7018514	1	Breaker, Circuit - AC	
17	7011552	1	Switch, Toggle - 50-60Hz	

SECTION 2 - CONTROLS

FIGURE 2-4. PUMP/MOTOR/TANK ASSEMBLIES



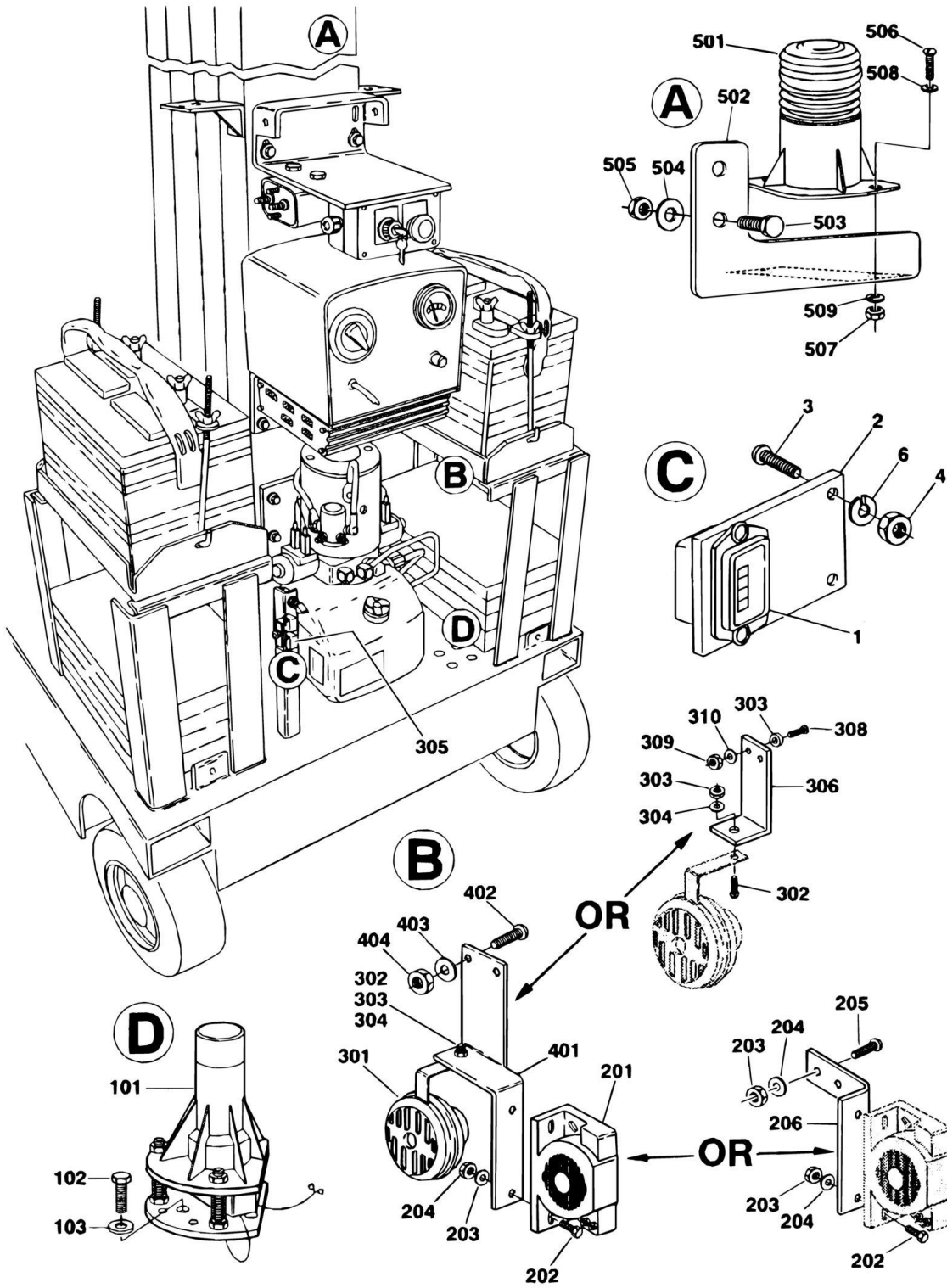
SECTION 2 - CONTROLS

FIGURE 2-4. PUMP/MOTOR/TANK ASSEMBLIES

ITEM	PART NUMBER	QTY	DESCRIPTION	REV
		Ref	PUMP/MOTOR/TANK ASSEMBLIES	
		Ref	PUMP/MOTOR/TANK ASSEMBLY (STANDARD PARTS)	
1	0641522	2	Bolt 5/16in-18NC x 2 3/4in	
2	PMP835E11	1	Coupling	
3	7013714	1	Plug	
4	7013715	1	Ball	
5	7013716	1	Seal, Shaft	
6	7013717	1	Washer	
7	Not Service	1	Plug, Shipping	
8	7013722	1	Magnet	
9	7013723	1	Filter - 149 Micron	
10	7016710	1	Motor	
10	7016718	1	Brush Kit	
11	7013758	2	Screw 1/4in-20NC	
12	7013727	1	Cover	
13	7013728	2	Screw M6 x 1	
14	Not Serviced	1	Nameplate - Serial Number	
15	7016719	1	Pipe, PCV	
16	7013708	1	Valve, Check Cartridge	
17	0641508	1	Bolt 5/16in-18NC x 1in	
18	7016721	4	Bolt #12-24NC x 1/2in	
19	7013791	1	Tube, Return	
20	7016722	1	Nut 3/8in NPT	
21	7013759	1	Cable, Electrical	
22	7016712	1	Tank, Plastic	
23	7016713	1	Decal - Tank Fill Line	
24	7016714	1	Breather	
25	7013792	1	Nut, Compression	
26	7013793	1	Sleeve, Compression	
27	7013733	1	Spring	
28	7016711	1	Solenoid, Start	
29	7016716	1	Valve, Solenoid Cartridge	
30	7016723	1	Valve, Manual Override Cartridge	
31	7013766	1	Pin	
32	7013743	1	O-Ring	
33	Not Serviced	1	Endhead	
35	7013750	1	Cap	
36	7013720	2	Plug 1/16in	
37	7016724	1	Tube	
	3600254	Ref	PUMP/MOTOR/TANK ASSEMBLY (10VP & 15VP) (VARIABLE PARTS)	B
51	7016717	1	Pump Assembly	
51	7013701	1	Seal Kit - 7016717 Pump	
52	7013770	1	Screw, Valve Adjustment	
	3600255	Ref	PUMP/MOTOR/TANK ASSEMBLY (20VP) (VARIABLE PARTS)	B
51	7013747	1	Pump Assembly	
51	7013701	1	Seal Kit - 7013747 Pump	
52	7013770	1	Screw, Valve Adjustment	

SECTION 2 - CONTROLS

FIGURE 2-5. OPTION INSTALLATIONS



SECTION 2 - CONTROLS

FIGURE 2-5. OPTION INSTALLATIONS

ITEM	PART NUMBER	QTY	DESCRIPTION	REV
		Ref	OPTION INSTALLATIONS	
	0256541	Ref	HOURMETER INSTALLATION - OPTION	B
1	2420165	1	Gauge, Hourmeter	
2	0902296	1	Bracket	
3	3910608	4	Screw, Machine #6-32NC x 1/2in	
4	3310601	4	Nut #6-32NC	
6	4760600	4	Lockwasher #6	
	0256545	Ref	TILT INDICATOR INSTALLATION - OPTION	3
101	4360435	1	Switch, Tilt	
102	0641408	4	Bolt 1/4in-20NC x 1 (Prior to SN 0130001233)	
102	4300106	4	Stud, Grooved (SN 0130001233 to Present)	
103	4711400	4	Flatwasher 1/4in Narrow (Prior to SN 0130001233)	
104	3311405	4	Locknut 1/4in-20NC (Prior to SN 0130001233)	
	0256540	Ref	ALARM INSTALLATION - OPTIONAL	B
201	0140033	1	Alarm (Remove Ground Strap Before Installing)	
202	0641406	2	Bolt 1/4in-20NC x 3/4in	
203	3311405	4	Locknut 1/4in-20NC	
204	4711400	4	Flatwasher 1/4in Narrow	
205	3911410	2	Screw, Machine 1/4in-20NC x 5/8in	
206	0902356	1	Bracket (With Alarm Only)	
	0256539	Ref	HORN INSTALLATION - OPTIONAL	C
301	0140022	1	Horn	
302	0641507	1	Bolt 5/16in-18NC x 7/8in	
303	3311505	1	Locknut 5/16in-18NC	
304	4711500	2	Flatwasher 5/16in Narrow	
305	3740069	1	Relay	
306	0902354	1	Bracket (With Horn Only)	
307	3539964	1	Spacer	
308	3911416	2	Screw, Machine 1/4in-20NX x 1in	
309	3311405	2	Locknut 1/4in-20NC	
310	4711400	2	Flatwasher 1/4in Narrow	
311	3911010	1	Screw, Machine #10-24NC x 5/8in	
312	3311001	1	Nut #10-24NC	
313	4751000	2	Flatwasher #10	
314	4761000	1	Lockwasher #10	
	0256538	Ref	BRACKET INSTALLATION - ALARM/HORN OPTION	A
401	0902295	1	Bracket	
402	3911410	2	Screw, Machine 1/4in-20NC x 5/8in	
403	3311401	2	Nut 1/4in-20NC	
404	4711400	2	Flatwasher 1/4in Narrow	
	0256546	Ref	BEACON LIGHT INSTALLATION	C
501	Kit	1	Beacon Light Assembly Options:	
501	2920119	1	Beacon Light Assembly (Prior to SN 23604)	
501	2920146	1	Beacon Light Assembly (SN 23604 to Present)	
501A	7016319	1	Bulb, Light	
501B	Kit	1	Amber Lens Options:	
501B	7016320	1	Lens - 3 1/8in Height	
501B	7016372	1	Lens - 4 1/8in Height	
502	090227	1	Bracket	
503	0641610	2	Bolt 3/8in-16NC x 1 1/4in	

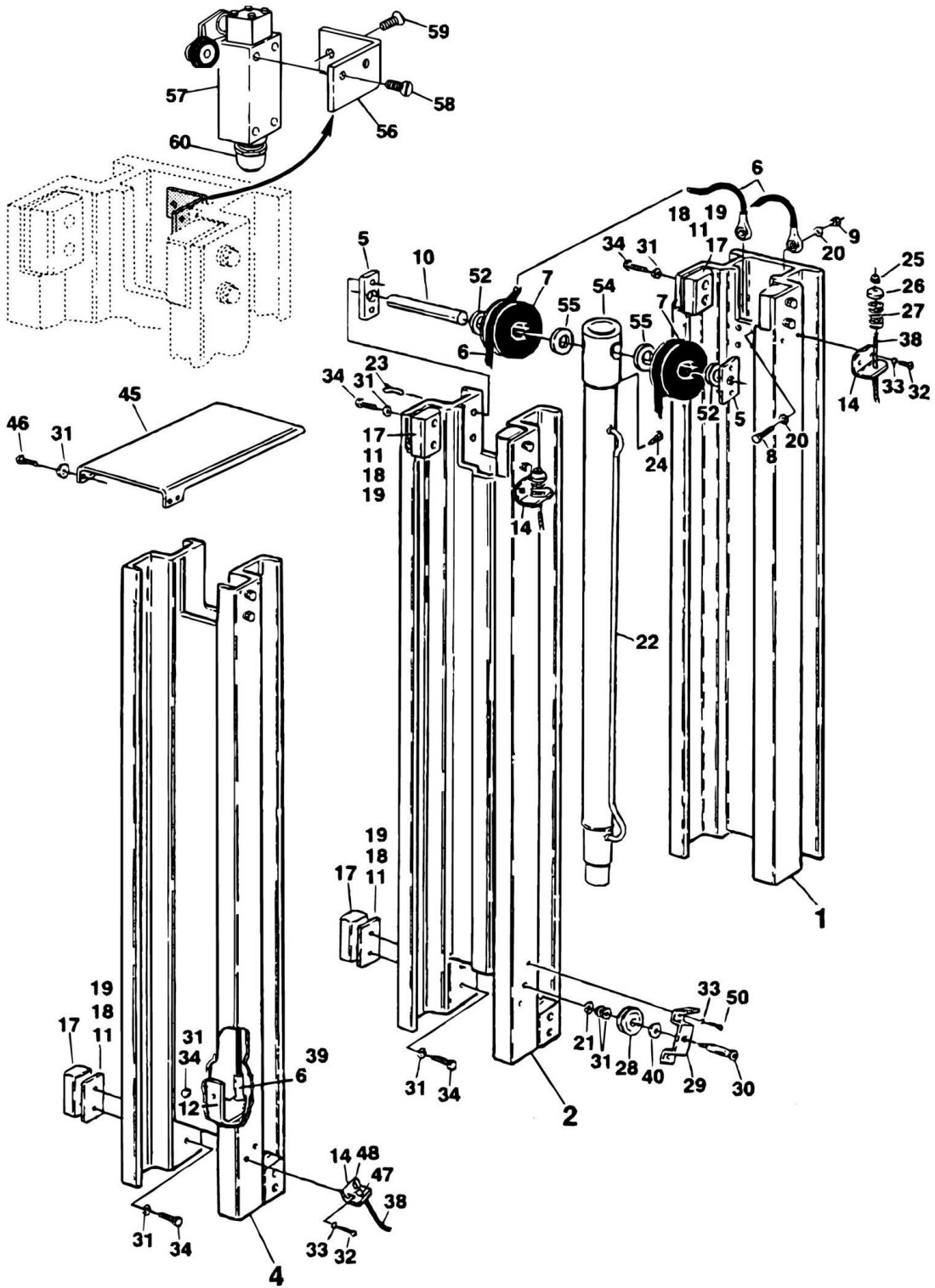
SECTION 2 - CONTROLS

ITEM	PART NUMBER	QTY	DESCRIPTION	REV
504	3311605	2	Locknut 3/8in-16NC	
505	4711600	4	Flatwasher 3/8in Narrow	
506	3911010	2	Screw, Machine #10-24NC x 5/8in	
507	3311001	2	Nut #10-24NC	
508	4751000	2	Flatwasher #10	
509	4761000	2	Lockwasher #10	

SECTION 3 - MAST

SECTION 3 - MAST

FIGURE 3-1. MAST ASSEMBLY 10VP



SECTION 3 - MAST

FIGURE 3-1. MAST ASSEMBLY 10VP

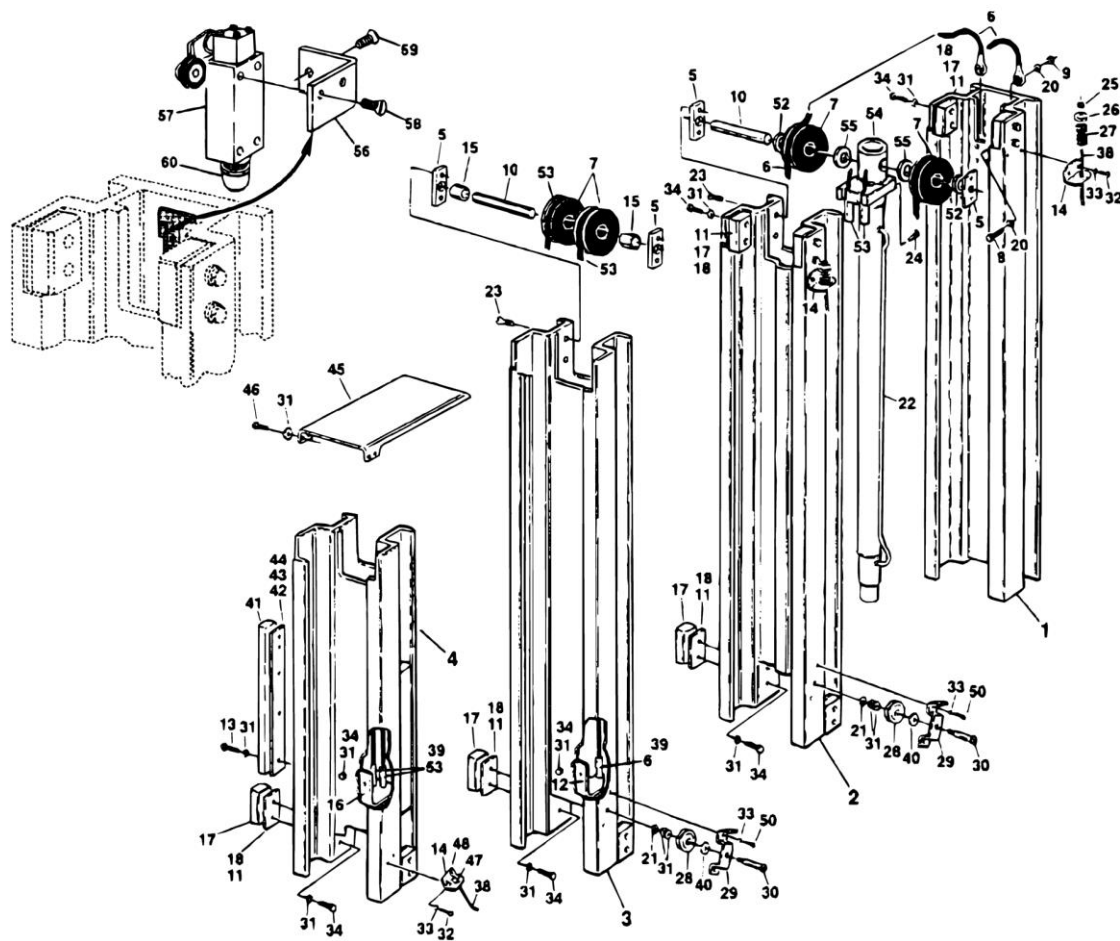
ITEM	PART NUMBER	QTY	DESCRIPTION	REV
	0801069	Ref	MAST ASSEMBLY 10VP	D
1	1271313	1	Channel, Mast - #1	
2	1271238	1	Channel, Mast - #2	
4	1271316	1	Channel, Mast - #3	
5	0362377	2	Bar, Sheave Pin	
6	1060546	2	Cable Assembly	
7	3580217	2	Cable, Sheave	
8	0641610	2	Bolt 3/8in-16NC x 1 1/4in	
9	3311605	2	Locknut 3/8in-16NC	
10	3422361	1	Pin, Sheave	
11	4070860	15	Shim 5/64in	
12	0901992	1	Bracket - Bottom	
14	0902047	1	Bracket	
17	3340704	8	Pad, Slide	
18	4070861	3	Shim 1/32in	
19	4070862	10	Shim 1/64in	
20	4751600	2	Flatwasher 3/8in	
21	4761600	1	Lockwasher 3/8in	
22	1683201	1	Lift Cylinder Assembly (See CYLINDER SECTION for Breakdown)	
23	3900192	4	Capscrew, Flathead 3/8in-16NC x 1/2in	
24	3900206	1	Capscrew 1/4in-28NF x 5/8in	
25	3311405	1	Locknut 1/4in-20NC	
26	4740414	1	Cupwasher	
27	4160124	1	Spring	
28	3580228	1	Sheave, Cable	
29	0902042	1	Bracket, Pulley	
30	3900187	1	Screw, Shoulder 5/16in-18NC x 1/2in	
31	4711400	34	Flatwasher 1/4in Narrow	
32	3900191	2	Screw #10-24NC x 3/4in	
33	4761000	8	Lockwasher #10	
34	0641406	12	Bolt 1/4in-20NC x 3/4in	
38	1060541	1	Cable, Sequence	
39	3311601	4	Nut 3/8in-16NC	
40	4751500	1	Flatwasher 5/16in	
41	3340709	2	Pad, Slide	
45	4060877	1	Shield, Cover	
46	0641404	4	Bolt 1/4in-20NC x 1/2in	
47	4220160	1	Sleeve, Stop	
48	4460121	1	Connector, Cap	
49	3020028	AR	Lubricant, Graphkote	
50	3900205	2	Screw, Phillips	
51	0100071	AR	Loctite	
52	4566838	2	Tube, Spacer	
54	4566846	1	Tube, Cylinder Cable Mounting	
55	4566960	2	Tube, Spacer	
56	0902285	1	Bracket, Limit Switch	
57	4360437	1	Switch, Limit	
58	3911020	2	Screw, Machine #20-24NC x 1 1/4in	
59	0740602	2	Screw, Socket Head Countersunk #6-32NC x 1/4in	
60	4460662	1	Connector, Strain Relief	

SECTION 3 - MAST

ITEM	PART NUMBER	QTY	DESCRIPTION	REV
	2901420	1	Mast Kit (includes Items 1-4)	

SECTION 3 - MAST

FIGURE 3-2. MAST ASSEMBLY 15VP



SECTION 3 - MAST

FIGURE 3-2. MAST ASSEMBLY 15VP

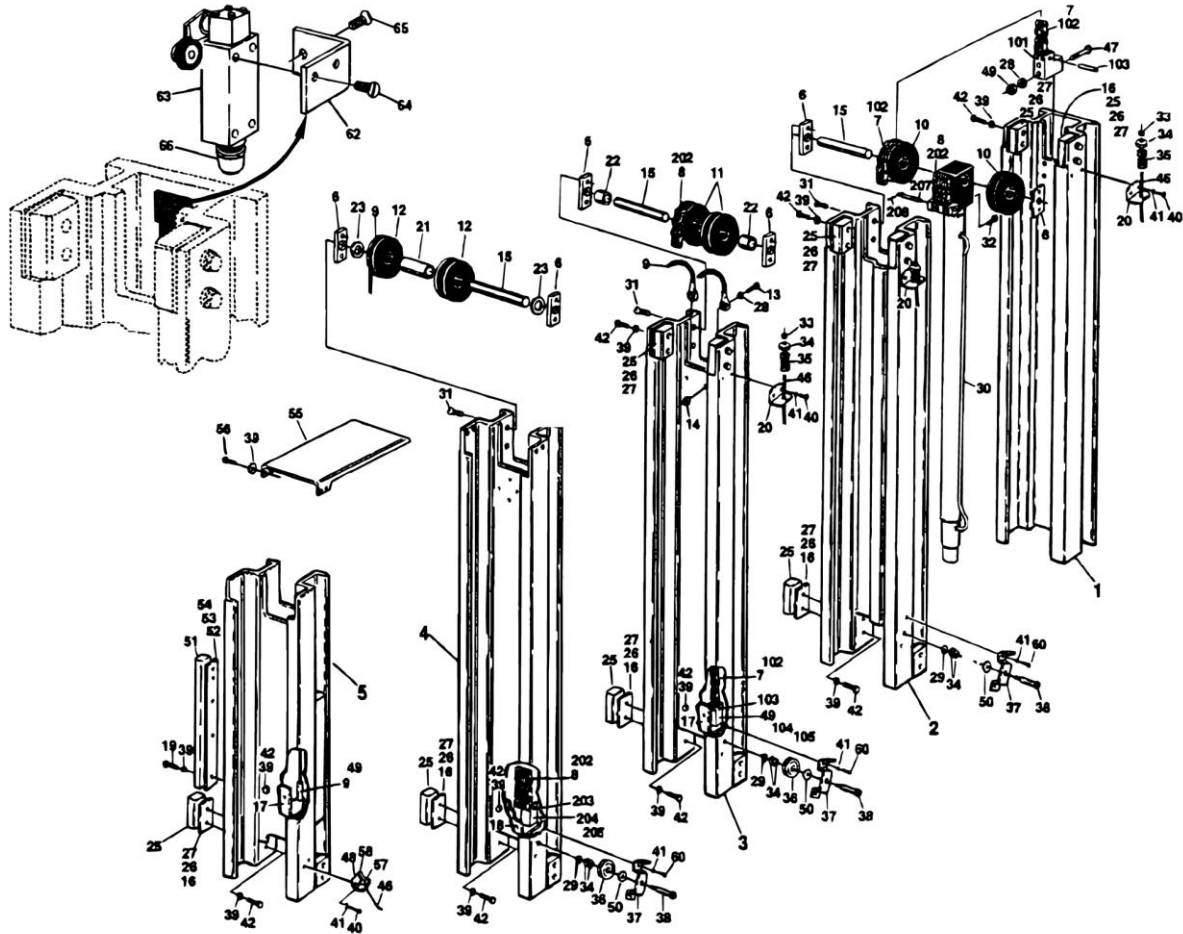
ITEM	PART NUMBER	QTY	DESCRIPTION	REV
	0801048	Ref	MAST ASSEMBLY - 15VP	C
1	1271313	1	Channel, Mast - #1	
2	1271238	1	Channel, Mast - #2	
3	1271314	1	Channel, Mast - #3	
4	1271312	1	Channel, Mast - #4	
5	0362377	4	Bar, Sheave Pin	
6	1060546	2	Cable Assembly	
7	3580217	4	Cable, Sheave	
8	0641610	2	Bolt 3/8in-16NC x 1 1/4in	
9	3311605	2	Locknut 3/8in-16NC	
10	3422361	1	Pin, Sheave	
11	4070860	15	Shim 5/64in	
12	0901992	1	Bracket - Bottom	
13	0641410	10	Bolt 1/4in-20NC x 1 1/4in	
14	0902047	2	Bracket	
15	4566487	2	Tube, Spacer	
16	0901993	1	Bracket, Bottom	
17	3340704	10	Pad, Slide	
18	4070861	3	Shim 1/32in	
19	4070862	10	Shim 1/64in	
20	4751600	2	Flatwasher 3/8in	
21	4761600	2	Lockwasher 3/8in	
22	1683201	1	Lift Cylinder Assembly (See CYLINDER SECTION for Breakdown)	
23	3900192	8	Capscrew, Flathead 3/8in-16NC x 1/2in	
24	3900206	2	Capscrew, 1/4in-28NF x 5/8in	
25	3311405	2	Locknut 1/4in-20NC	
26	4740414	2	Cupwasher	
27	4160124	2	Spring	
28	3580228	2	Sheave, Cable	
29	0902042	2	Bracket, Pulley	
30	3900187	2	Screw, Shoulder 5/16in-18NC x 1/2in	
31	4711400	46	Flatwasher 1/4in Narrow	
32	3900191	4	Screw #10-24NC x 3/4in	
33	4761000	8	Lockwasher #10	
34	0641406	30	Bolt 1/4in-20NC x 3/4in	
38	1060541	2	Cable, Sequence	
39	3311601	8	Nut 3/8in-16NC	
40	4751500	2	Flatwasher 5/16in	
41	3340709	2	Pad, Slide	
42	4070875	AR	Shim 5/64in	
43	4070876	AR	Shim 3/64in	
44	4070877	AR	Shim 1/64in	
45	4060877	1	Shield, Cover	
46	0641404	4	Bolt 1/4in-20NC x 1/2in	
47	4220160	2	Sleeve, Stop	
48	4460121	2	Connector, Cap	
49	3020028	AR	Lubricant, Graphkote	
50	3900205	4	Screw, Phillips	
51	0100071	AR	Loctite	
52	4566838	2	Tube, Spacer	

SECTION 3 - MAST

ITEM	PART NUMBER	QTY	DESCRIPTION	REV
53	1060598	2	Cable, Mast Extension	
54	4845132	1	Tube, Cylinder Cable Mounting	
55	4566960	2	Tube, Spacer	
56	0902285	1	Bracket, Limit Switch	
57	4360437	1	Switch, Limit	
58	3911020	2	Screw, Machine #10-24NC x 1 1/4in	
59	0740602	2	Screw, Socket Head Countersunk #6-32NC x 1/4in	
60	4460662	1	Connector, Strain Relief	
	2901421	1	Mast Kit (Includes Items 1-4)	

SECTION 3 - MAST

FIGURE 3-3. MAST ASSEMBLY 20VP



SECTION 3 - MAST

FIGURE 3-3. MAST ASSEMBLY 20VP

ITEM	PART NUMBER	QTY	DESCRIPTION	REV
	0801070	Ref	MAST ASSEMBLY - 20VP	C
1	1271313	1	Channel, Mast - #1	
2	1271238	1	Channel, Mast - #2	
3	1271239	1	Channel, Mast - #3	
4	1271312	1	Channel, Mast - #5	
5	1271314	1	Channel, Mast - #4	
6	0362377	6	Bar, Sheave Pin	
7	1260305	2	Chain Assembly - #466 (See Items 101-106 for Breakdown)	
8	1260306	1	Chain Assembly - #444 (See Items 201-206 for Breakdown)	
9	1060546	2	Cable Assembly	
10	3580227	2	Sheave, Chain - #466	
11	3580226	2	Sheave, Chain - #444	
12	3580217	2	Cable, Sheave	
13	0641610	2	Bolt 3/8in-16NC x 1 1/4in	
14	3311605	6	Locknut 3/8in-16NC	
15	3422361	3	Pin, Sheave	
16	4070860	16	Shim 5/64in	
17	0901992	2	Bracket - Bottom	
18	0901993	1	Bracket, Bottom	
19	0641410	10	Bolt 1/4in-20NC x 1 1/4in	
20	0902047	3	Bracket	
21	4566486	1	Tube, Spacer	
22	4566487	2	Tube, Spacer	
23	4712600	2	Flatwasher 1in Narrow	
25	3340704	14	Pad, Slide	
26	4070861	2	Shim 1/32in	
27	4070862	9	Shim 1/64in	
28	4751600	8	Flatwasher 3/8in	
29	4761400	3	Lockwasher 1/4in	
30	1683201	1	Lift Cylinder Assembly (See CYLINDER SECTION for Breakdown)	
31	3900192	12	Capscrew, Flathead 3/8in-16NC x 1/2in	
32	3900206	1	Capscrew 1/4in-28NF x 5/8in	
33	3311405	3	Locknut 1/4in-20NC	
34	4740414	3	Cupwasher	
35	4160124	3	Spring	
36	3580228	3	Sheave, Cable	
37	0902042	3	Bracket, Pulley	
38	3900187	3	Screw, Shoulder 5/16in-18NC x 1/2in	
39	4711400	68	Flatwasher 1/4in Narrow	
40	3900191	8	Screw #10-24NC x 3/4in	
41	4761000	14	Lockwasher #10	
42	0641406	32	Bolt 1/4in-20NC x 3/4in	
46	1060541	3	Cable, Sequence	
47	0641620	4	Bolt 3/8in-16NC x 2 1/2in	
48	0902084	1	Bracket	
49	3311601	16	Nut 3/8in-16NC	
50	4751500	3	Flatwasher 5/16in	
51	3340709	2	Pad, Slide	
52	4070875	AR	Shim 5/64in	
53	4070876	AR	Shim 3/64in	

SECTION 3 - MAST

ITEM	PART NUMBER	QTY	DESCRIPTION	REV
54	4070877	AR	Shim 1/64in	
55	4060877	1	Shield, Cover	
56	0641404	4	Bolt 1/4in-20NC x 1/2in	
57	4220160	3	Sleeve, Stop	
58	4460121	3	Connector, Cap	
59	3020028	AR	Lubricant, Graphkote	
60	3900205	6	Screw, Phillips	
61	0100071	AR	Loctite	
62	0902285	1	Bracket, Limit Switch	
63	4360437	1	Switch, Limit	
64	3911020	2	Screw, Machine #10-24NC x 1 1/4in	
65	0740602	2	Screw, Socket Head Countersunk #6-32NC x 1/4in	
66	4460662	1	Connector, Strain Relief	
	2901422	1	Mast Kit (Includes Items 1-5)	
	1260305	Ref	CHAIN ASSEMBLY - #466 CHAN	B
101	0561156	1	Block	
102	1260299	68 in/1.73m	Chain	
103	3422265	2	Pin	
103	3450201	4	Pin, Cotter 1/16in x 1/2in	
104	0561150	1	Block	
105	4300111	1	Stud	
106	0100019	AR	Loctite #RC640 (Not Shown)	
	1260306	Ref	CHAIN ASSEMBLY - #444 CHAIN	B
201	0561159	1	Block	
202	1260298	137 in/3.48m	Chain	
203	3422346	2	Pin, Grooved	
204	0561151	2	Block	
205	4300111	2	Stud	
206	0100062	AR	Loctite #RC640 (Not Shown)	
207	3422266	1	Pin	
208	3450201	2	Pin, Cotter 1/16in x 1/2in	

SECTION 3 - MAST

FIGURE 3-4. MAST MOUNTED COMPONENTS

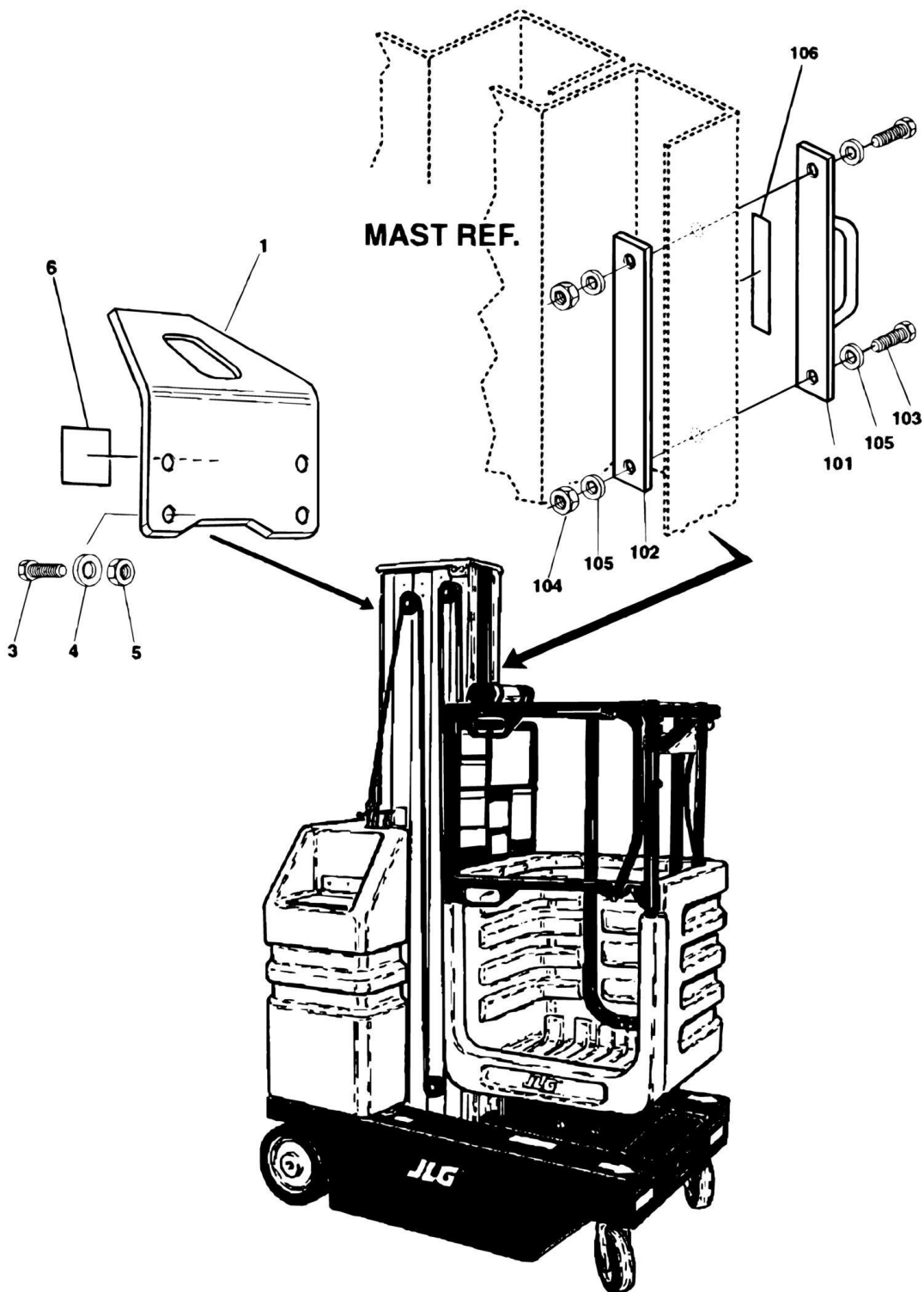


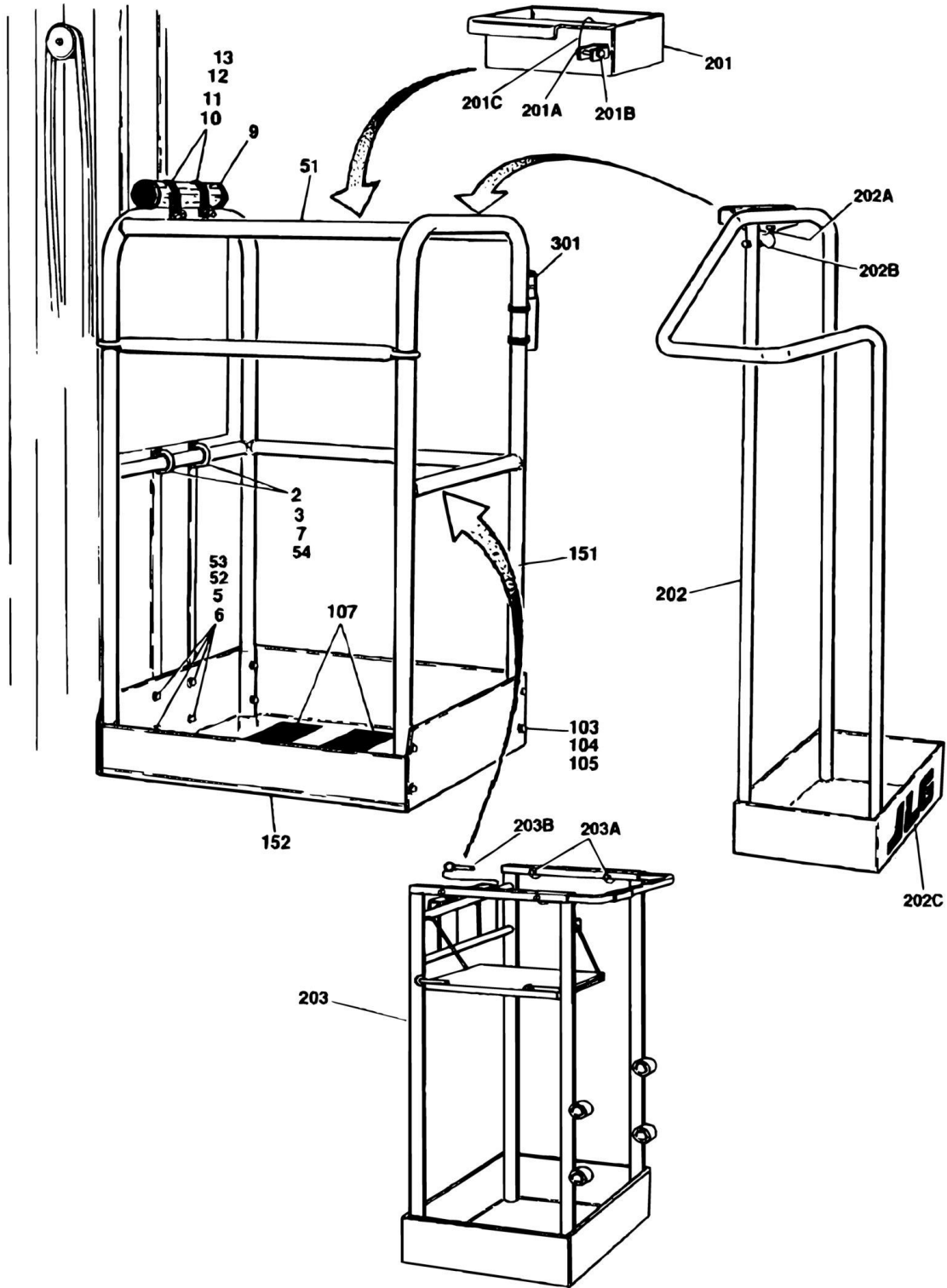
FIGURE 3-4. MAST MOUNTED COMPONENTS

ITEM	PART NUMBER	QTY	DESCRIPTION	REV
		Ref	MAST MOUNTED COMPONENTS	
	0255019	Ref	CRANE HOOK INSTALLATION	C
1	3538591	1	Plate, Hook	
3	0641609	4	Bolt 3/16in-16NC x 1 1/8in	
4	4711600	4	Flatwasher 3/16in Narrow	
5	3311601	4	Nut 3/16in-16NC	
6	1701500	1	Decal - Lifting Lug (Prior to SN 0130001293)	
6	1703455	1	Decal - Lifting Lug (SN 0130001293 to Present)	
	1282728	Ref	SAFETY ATTACH INSTALLATION (STANDARD PARTS)	B
101	4845345	1	Safety Attach Weldment	
102	3539814	1	Plate, Backing	
103	0641812	2	Bolt 1/2in-13NC x 1 1/2in	
104	3271805	2	Locknut 1/2in-13NC	
105	4751800	4	Flatwasher 1/2in	
	0256559	Ref	SAFETY ATTACH INSTALLATION (COMMON OPTION) (VARIABLE PARTS)	B
106	1702612	1	Decal - Lanyard Attach	
	0257114	Ref	SAFETY ATTACH INSTALLATION (GM/HERTZ OPTION) (VARIABLE PARTS)	-
106	1703175	1	Decal - Lanyard Attach	

SECTION 4 - PLATFORM

SECTION 4 - PLATFORM

FIGURE 4-1. PLATFORM COMPONENTS INSTALLATION



SECTION 4 - PLATFORM

FIGURE 4-1. PLATFORM COMPONENTS INSTALLATION

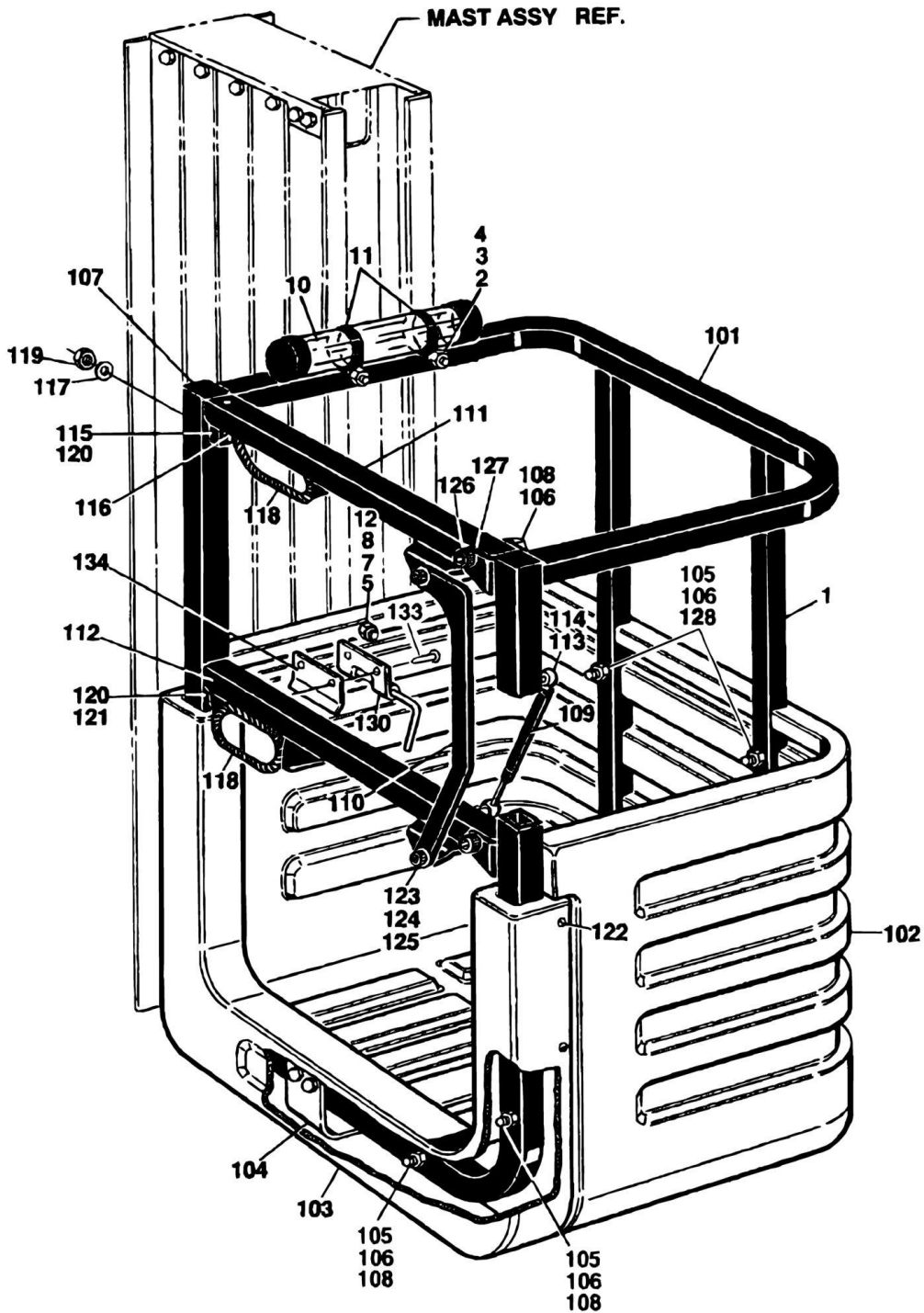
ITEM	PART NUMBER	QTY	DESCRIPTION	REV
		Ref	PLATFORM COMPONENT INSTALLATION	
		Ref	ALUMINUM PLATFORM INSTALLATION (STANDARD PARTS)	
2	1320211	2	U-Bolt	
3	4711500	4	Flatwasher 5/16in Narrow	
4	0641408	4	Bolt 1/4in-20NC x 1in	
5	4711400	8	Flatwasher 1/4in	
6	3311405	4	Lock Nut 1/4in-20NC	
7	3311501	4	Nut 5/16in-18NC	
8	0100011	AR	Loctite # 242 (Not Shown)	
9	4566780	1	Manual Tube Options	
10	1320219	2	Tube Clamp Options	
11	0630486	2	Screw 5/16in-18NC x 1in (May 1995 to Present)	
12	4751500	2	Flatwasher 1/4in (May 1995 to Present)	
13	3311505	2	Locknut 5/16in-18NC (May to Present)	
	0254880	Ref	ALUMINUM PLATFORM INSTALLATION - 22IN X 22IN STANDARD MACHINES (VARIABLE PARTS)	RL-B
51	3510472	1	Platform Weldment - 22in x 22in	
52	0641408	4	Bolt 1/4in-20NC x 1in	
53 to 54	Not Required	0	Not Required	
	0256926	Ref	ALUMINUM PLATFORM INSTALLATION - 22IN x 22IN CSA MACHINES (VARIABLE PARTS)	
51	3510472	1	Platform Weldment -22in x 22in	
52	0641416	4	Bolt 1/4in-20NC x 1in	
53	4070955	1	Shim, Platform (Floorpan)	
54	4070956	2	Shim, Platform (Midrail)	
	0254879	Ref	ALUMINUM PLATFORM INSTALLATION - 26IN X 26IN STANDARD MACHINES (VARIABLE PARTS)	B
51	3510471	1	Platform Weldment - 26in x 26in	
52	0641408	4	Bolt 1/4in-20NC x 1in	
53 to 54	Not Required	0	Not Required	
	0256912	Ref	ALUMINUM PLATFORM INSTALLATION - 26IN x 26IN CSA MACHINES (VARIABLE PARTS)	
51	3510471	1	Platform Weldment - 26in x 26in	
52	0641416	4	Bolt 1/4in-20NC x 2in	
53	4070955	1	Shim, Platform (Floorpan)	
54	4070956	2	Shim, Platform (Midrail)	
		Ref	PLATFORM ASSEMBLIES (STANDARD PARTS)	
103	0641414	8	Bolt 1/4in-20NC x 1 3/4in	
104	4751400	16	Flatwasher 1/4in	
105	3311405	8	Locknut 1/4in-20NC	
107	4420039	AR	Tape, Non-Skid	
	3510472	Ref	PLATFORM ASSEMBLY - 22IN X 22IN	D
151	3640969	1	Rail Weldment	
152	3538105	1	Plate, Bottom	
	3510471	Ref	PLATFORM ASSEMBLY - 26IN X 26IN	D
151	3640966	1	Rail Weldment	
152	3537698	1	Plate, Bottom	
		Ref	OPTIONAL PLATFORM ATTACHMENTS	
201	0255036	1	Tool Tray Assembly	
201A	0902079	1	Bracket, Mounting	

SECTION 4 - PLATFORM

ITEM	PART NUMBER	QTY	DESCRIPTION	REV
201B	3421453	1	Pin, Snap	
201C	1060380	1	Cable, Lanyard	
201D	1702365	1	Decal - JLG	
202	0255040	1	Tube Caddy Assembly	
202A	3421453	1	Pin, Snap	
202B	1060380	1	Cable, Lanyard	
202C	1702365	1	Decal - JLG	
203	0256442	1	Utility Caddy Assembly	C
203A	3421453	2	Pin, Snap	
203B	3422551	2	Pin, Hitch	
204	Kit	1	Decal - Caddy Placement Options (Not Shown):	
204	1703088	1	English	
204	1703123	1	Japanese	
204	1703117	1	Latin America Spanish	
205	Kit	1	Decal - Capacity Options (Not Shown):	
205	1703087	1	English	
205	1703122	1	Japanese	
205	1703116	1	Latin America Spanish	
	0255853	Ref	LASER LOCATOR INSTALLATION (OPTIONAL)	A
301	4656847	1	Tube, Mounting	
301	1320218	2	Clamp, Spring	
301	0750802	2	Screw #8 x 1/4in	
301	2920127	1	Pointer, Laser	
301	4460425	1	Connector, Strain Relief	

SECTION 4 - PLATFORM

FIGURE 4-2. FIBERGLASS PLATFORM INSTALLATION



SECTION 4 - PLATFORM

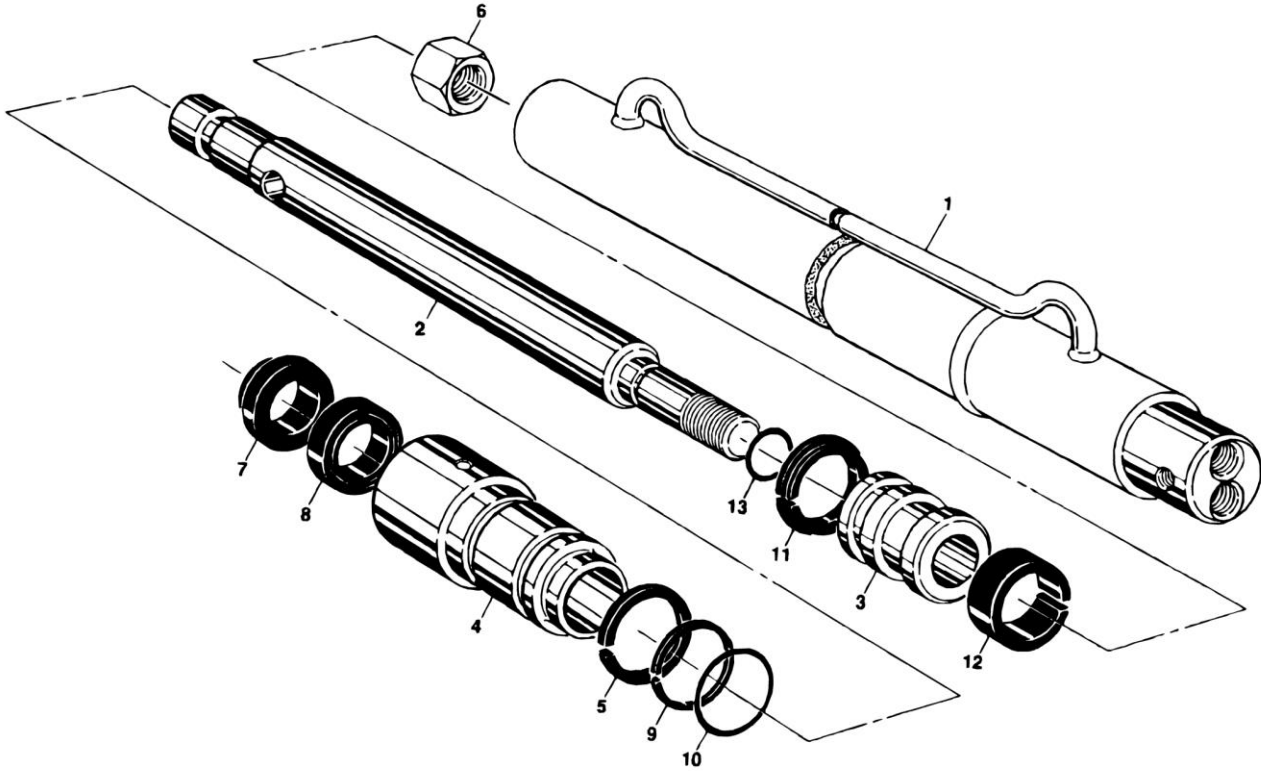
FIGURE 4-2. FIBERGLASS PLATFORM INSTALLATION

ITEM	PART NUMBER	QTY	DESCRIPTION	REV
		Ref	FIBERGLASS PLATFORM INSLLTATION	
	0254980	Ref	PLATFORM INSTALLATION - STANDARD MACHINES	B
	0256928	Ref	PLATFORM INSTALLATION - CSA MACHINES	-
1	3510454	1	Platform Assembly (See Item 101-134 for Breakdown)	
2	0641518	2	Bolt 5/16in-18NC x 2 1/4in	
3	4711500	4	Flatwasher 5/16in	
4	3311505	2	Locknut 5/16in-18NC	
5	3300356	2	Nut 5/16in-18NC	
6	0100019	AR	Loctite #271 (Not Shown)	
7	4300115	2	Stud 5/16in-18NC x3in	
8	3311501	2	Nut 5/16in 18NC	
9	0100011	AR	Loctite #242 (Not Shown)	
10	4566563	1	Tube, Manual (Prior to May 1995)	
10	4566780	1	Tube, Manual (May 1995 to Present)	
11	1320110	2	Clamp, Tube (Prior to May 1995)	
11	1320219	2	Clamp, Tube (May 1995 to Present)	
12	4070958	1	Shim (CSA Only)	
	3510454	Ref	PLATFORM ASSEMBLY	C
101	3640923	1	Rail	
102	3510477	1	Basket	
103	4060882	1	Cover	
104	0362384	1	Bar, Support	
105	0641416	10	Bolt 1/4in-20NC x 2in	
106	4751400	22	Flatwasher 1/4in	
107	3520072	2	Cap	
108	3311405	12	Locknut 1/4in-20NC	
109	4160125	1	Spring, Gas	
110	0362347	1	Link, Gate	
111	3640924	1	Rail, Gate (Top)	
112	3640990	1	Rail, Gate (Bottom)	
113	4751500	1	Flatwasher 5/16in	
114	3311501	1	Nut 5/16in-18NC	
115	3340746	1	Pad, Gate Rest	
116	3911032	4	Screw, Machine #10-24NC x 2in	
117	4751000	8	Flatwasher #10	
118	4060804	2 ft	Flex-Trim	
119	3311001	4	Nut #10-24NC	
120	4070890	2	Shim, Gate Stop	
121	3340754	1	Pad, Gate Latch	
122	3900177	6	Screw, Plastite	
123	3900202	2	Bolt, Shoulder 1/4in x 1/4in	
124	4740429	4	Washer, Nylon	
125	3311005	2	Locknut #10-24NC	
126	3900203	2	Bolt, Shoulder 5/16in x 1 1/2in	
127	4740428	4	Washer, Nylon	
128	3300151	2	Nut, Acorn, 1/4in-20NC	
129	0100011	AR	Loctite #242 (Not Shown)	
130	2940082	1	Latch, Gate	
133	3820024	2	Rivet	
134	4070894	1	Shim, Gate Latch	

SECTION 5 - CYLINDER

SECTION 5 - CYLINDER

FIGURE 5-1. LIFT CYLINDER ASSEMBLY



SECTION 5 - CYLINDER

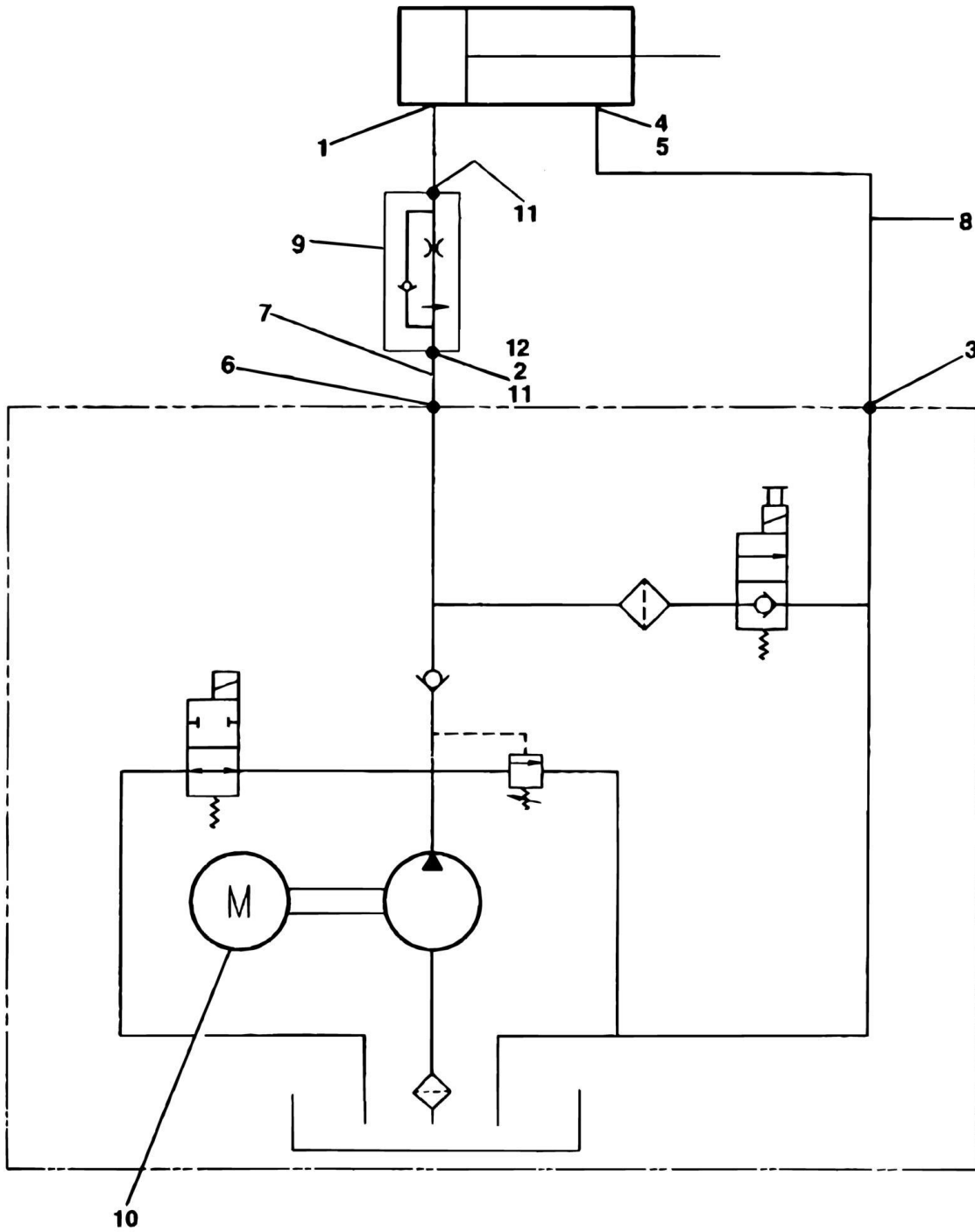
FIGURE 5-1. LIFT CYLINDER ASSEMBLY

ITEM	PART NUMBER	QTY	DESCRIPTION	REV
	1683201	Ref	LIFT CYLINDER ASSEMBLY	
1	Not Serviced	1	Barrel	
2	7003250	1	Rod	
3	7003249	1	Piston	
4	7003248	1	Head	
5	7003247	1	Ring, Retaining	
6	7003246	1	Locknut	
7	Kit	1	Wiper, Rod	
8	Kit	1	Seal, Rod	
9	Kit	1	Ring, Back-up	
10	Kit	1	O-Ring	
11	Kit	1	Seal, Piston	
12	Kit	1	Ring, Wear	
13	Kit	1	O-Ring	
	7003245	1	Seal Kit (Includes Items 7-13)	

SECTION 6 - HYDRAULIC

SECTION 6 - HYDRAULIC

FIGURE 6-1. HYDRAULIC DIAGRAM



SECTION 6 - HYDRAULIC

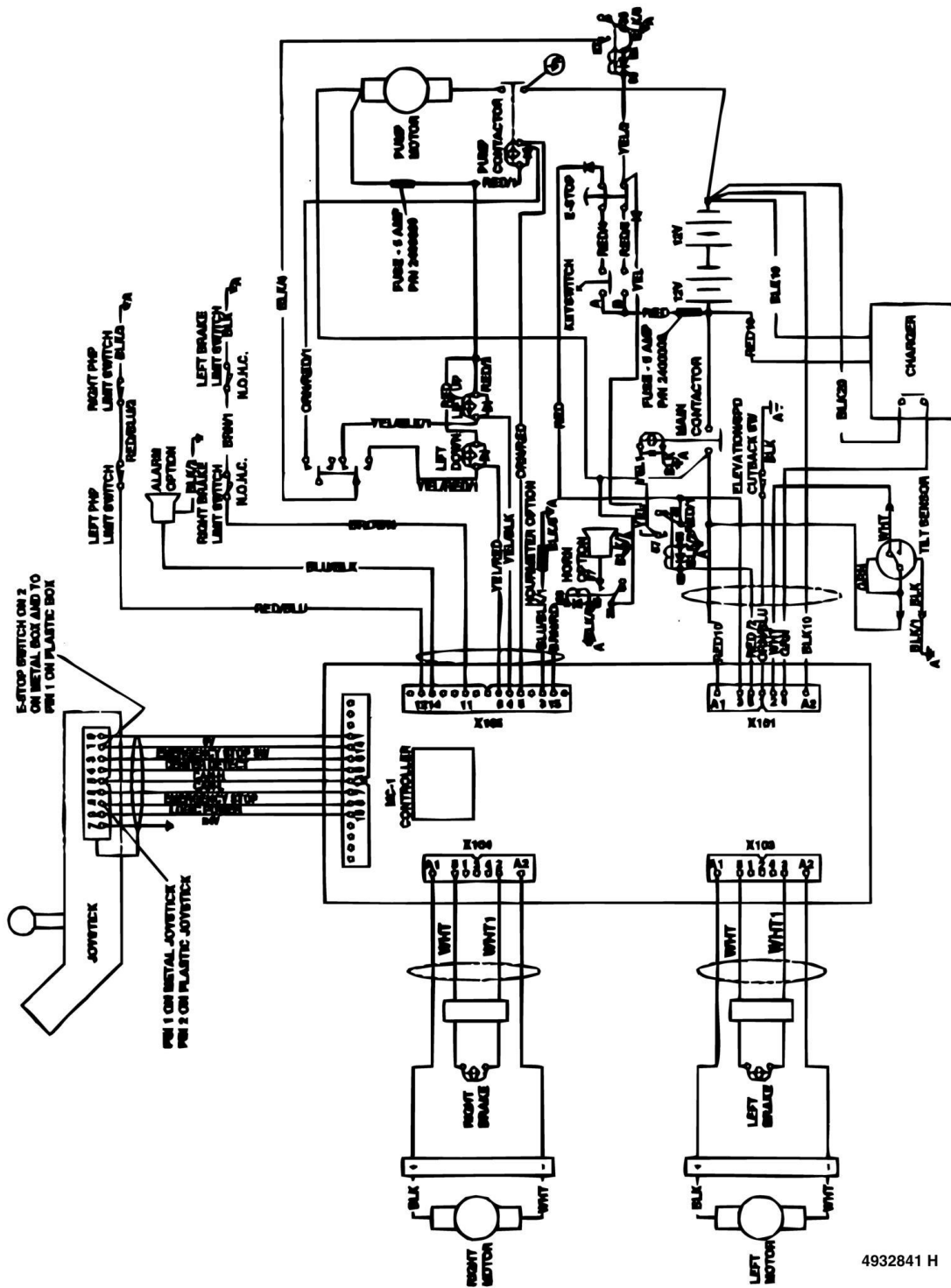
FIGURE 6-1. HYDRAULIC DIAGRAM

ITEM	PART NUMBER	QTY	DESCRIPTION	REV
		Ref	HYDRAULIC DIAGRAMS	
	2792252	Ref	HYDRAULIC DIAGRAM - 10VP & 15VP	2
	2792253	Ref	HYDRAULIC DIAGRAM - 20VP	2
1	2220875	1	Fitting, 90	
2	2221021	1	Fitting, Straight	
3	2220472	1	Fitting, 90	
4	2220603	1	Fitting, Straight	
5	2220507	1	Fitting, 90	
6	2220473	1	Fitting, 90	
7	4567186	1	Tube	
8	4566950	1	Tube	
9	4640956	1	Valve, Flow Control (10VP & 15VP)	
9	4640900	1	Valve, Flow Control (20VP)	
10	3600254	1	Pump/Motor/Tank Assembly (10VP & 15VP) (See CONTROLS SECTION for Breakdown)	
10	3600255	1	Pump/Motor/Tank Assembly (20VP) (See CONTROLS SECTION for Breakdown)	
11	0100020	AR	Sealant, Pipe	
12	2221022	1	Fitting, Straight	

SECTION 7 - ELECTRICAL

SECTION 7 - ELECTRICAL

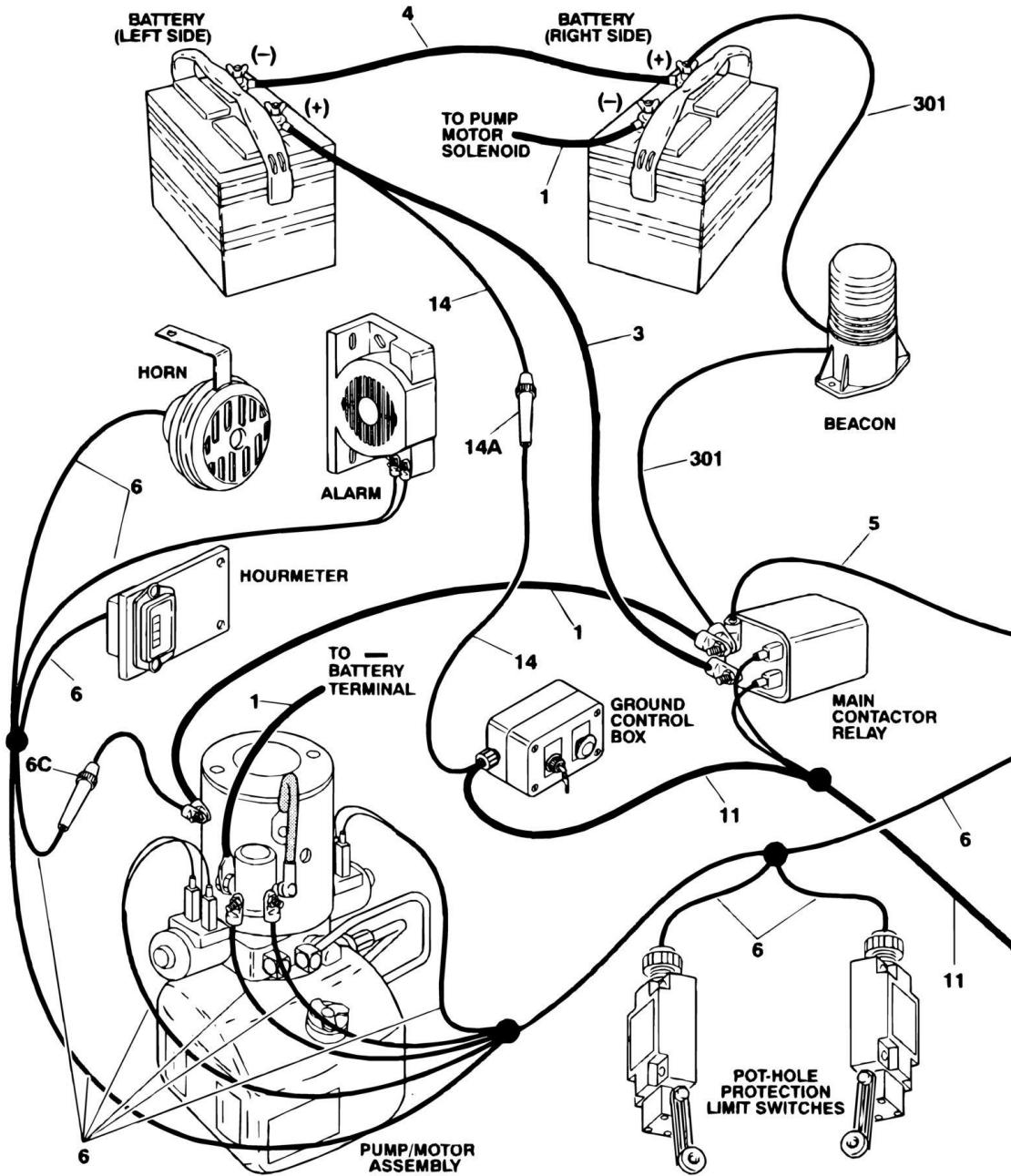
FIGURE 7-1. ELECTRICAL DIAGRAM - STANDARD



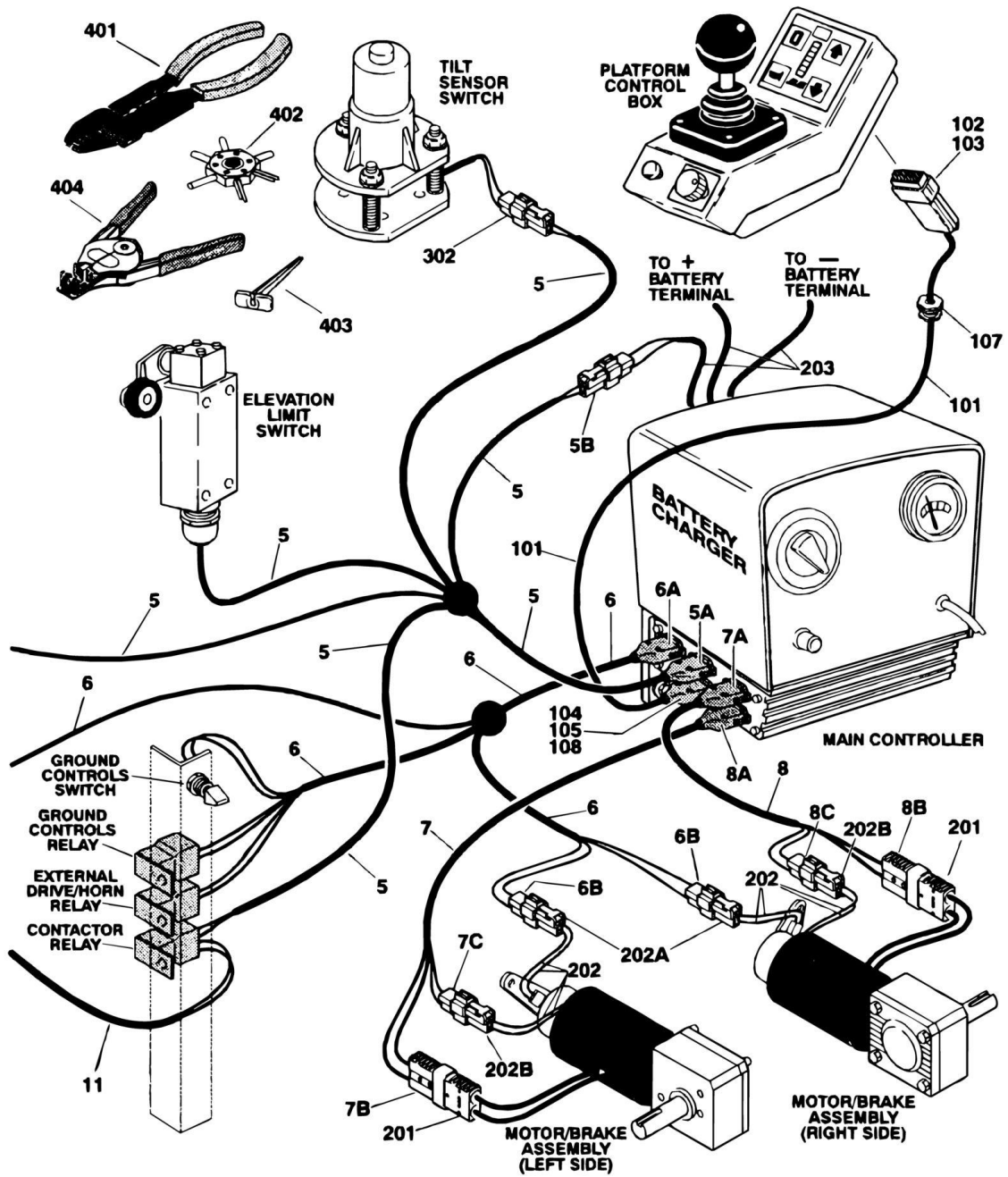
4932841 H

SECTION 7 - ELECTRICAL

FIGURE 7-2. HARNESS AND CABLES INSTALLATION (SHEET 1 OF 2)



SECTION 7 - ELECTRICAL



SECTION 7 - ELECTRICAL

FIGURE 7-2. HARNESS AND CABLES INSTALLATION (SHEET 2 OF 2)

ITEM	PART NUMBER	QTY	DESCRIPTION	REV
		Ref	HARNESS AND CABLES INSTALLATION	
	4932841	Ref	ELECTRICAL DIAGRAM - STANDARD	H
1	1060620	2	Cable, Battery	
3	1060619	1	Cable, Battery	
4	1060618	1	Cable, Battery	
5	4921826	1	Harness - Ground Control	D
5	3990010	2	Diode	
5A	4460646	1	Receptacle - 5 Pin	
5A	4460647	2	Shell, Receptacle	
5B	4460320	1	Connector, Female - 2 Position	
5B	4460368	2	Socket	
6	4921825	1	Harness - Valve and Limit Switch	H
6	3990010	5	Diode	
6A	4460681	1	Receptacle - 15 Pin	
6A	4460643	1	Shell, Receptacle	
6A	4460684	8	Socket	
6B	4460424	2	Connector, Male - 2 Position	
6B	4460267	2	Pin	
6B	4460268	2	Socket	
6C	2400006	1	Fuse - 5 Amp	
6C	4460044	1	Fuseholder	
7	4921824	1	Harness - Left Side Drive Motor	B
7A	4460644	1	Receptacle - 5 Pin	
7A	4460645	2	Pin	
7B	4460648	1	Receptacle - 2 Position	
7C	4460320	1	Connector, Female - 2 Position	
7C	4460267	1	Pin	
7C	4460268	2	Socket	
8	4921823	1	Harness - Right Side Drive Motor	A
8A	4460644	1	Receptacle - 5 Pin	
8A	4460645	2	Shell, Receptacle	
8B	4460648	1	Receptacle - 2 Position	
8C	4460320	1	Connector, Female - 2 Position	
8C	4460267	1	Pin	
8C	4460268	2	Socket	
11	4921948	1	Harness - Main Contactor	-
11	3990010	2	Diode - 6 Amp	
14	4921888	1	Harness - Keyswitch Power	-
14A	2400006	1	Fuse - 5 Amp	
14A	4460044	1	Fuseholder	
		Ref	PLATFORM CONSOLE HARNESS ASSEMBLIES	
		Ref	Used With 1600237 Platform Control Box:	
	4921815	Ref	Used With 1600237 Platform Control Box 10VP	D
	4921812	Ref	Used With 1600237 Platform Control Box 15VP	C
	4921816	Ref	Used With 1600237 Platform Control Box 20VP	D
		Ref	Used With 1600243 Platform Control Box:	
	4921878	Ref	Used With 1600243 Platform Control Box 10VP	C
	4921879	Ref	Used With 1600243 Platform Control Box 15VP	C
	4921880	Ref	Used With 1600243 Platform Control Box 20VP	C
101	1060616	AR	Cable, Electrical - 18/8	

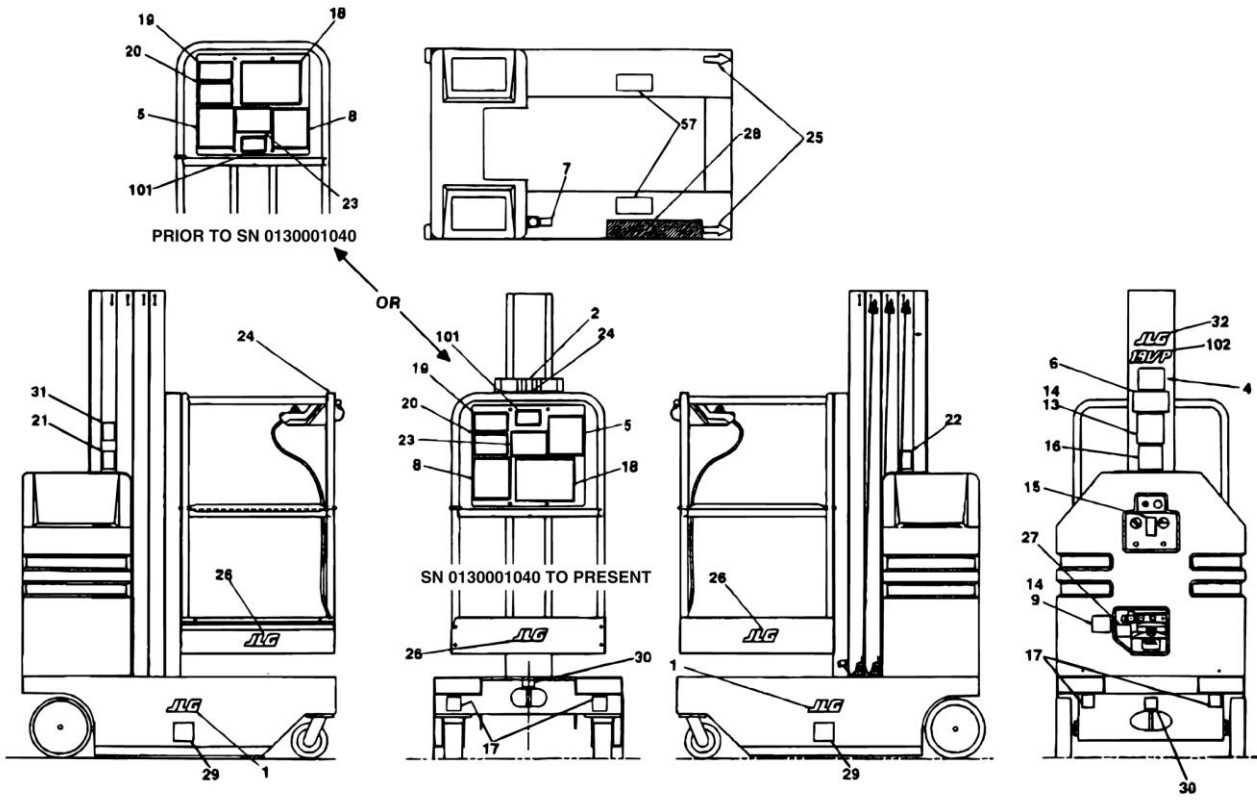
SECTION 7 - ELECTRICAL

ITEM	PART NUMBER	QTY	DESCRIPTION	REV
102	Kit	1	Receptacle Options:	
102	4460639	1	9 Pin	
102	4460671	1	12 Pin	
103	Kit	1	Receptacle Shell Options:	
103	4460640	1	For 9 Pin Receptacle	
103	4460672	1	For 12 Pin Receptacle	
104	4460682	1	Receptacle - 15 Socket	
105	4460643	1	Shell, Receptacle (For 15 Socket Receptacle)	
107	4460023	1	Connector, Strain Relief	
108	4460683	8	Pin	
		Ref	MISCELLANEOUS HARNESSSES AND COMPONENTS	
201	4460648	2	Receptacle - 2 Position (Located at Drive Motor)	
202	Not Available	2	Harness Assembly - Brake	
202A	4460320	1	Connector, Female - 2 Position	
202A	4460268	1	Socket	
202A	4460267	1	Pin	
202B	4460424	1	Connector, Male - 2 Position	
202B	4460268	1	Socket	
202B	4460267	1	Pin	
203	7018505	1	DC Battery Charger Harness Assembly	
		Ref	ACCESSORIES HARNESSSES AND COMPONENTS	
301	Not Available	1	Beacon Light Harness Assembly	
302	4460445	1	Receptacle - 3 Position (Attach to #5 for Tilt Sensor)	
302	4460227	3	Pin	
		Ref	TOOLS	
401	7002821	1	Crimper (For Wire to Pin/Socket Connections)	
402	7002823	1	Extractor (For Removal of Pins/Socket from Connectors)	
403	4460467	1	Extractor - 16-18 Gauge (For Removal of Pins/Socket from Deutsch Connectors)	
403	4460510	1	Extractor - 12-14 Gauge (For Removal of Pins/Socket from Deutsch Connectors)	
404	8896941	1	Stripper, Wire	

SECTION 8 - DECALS

SECTION 8 - DECALS

FIGURE 8-1. DECALS INSTALLATION - USA/CANADA



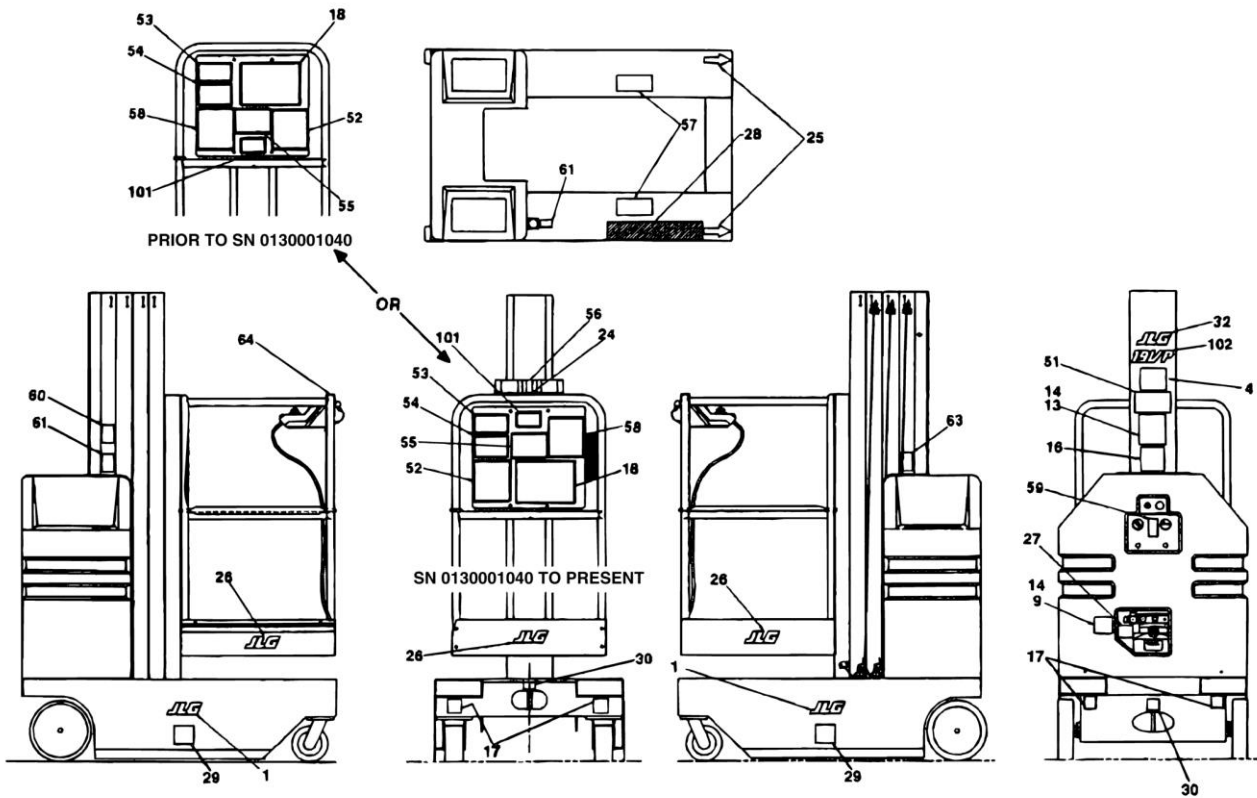
SECTION 8 - DECALS

FIGURE 8-1. DECALS INSTALLATION - USA/CANADA

ITEM	PART NUMBER	QTY	DESCRIPTION	REV
		Ref	DECALS INSTALLATION - USA/CANADA	
	0256240	Ref	DECALS INSTALLATION - STANDARD MACHINES (ALL) AND CSA MACHINES (FEBRUARY 1997 TO PRESENT) (STANDARD PARTS)	H
	0256247	Ref	DECALS INSTALLATION - CSA MACHINES (PRIOR TO FEBRUARY 1997) (STANDARD PARTS)	E
1	1701612	2	Decal - JLG (Prior to SN 0130001227)	
1	1702365	2	Decal - JLG (SN 0130001227 to Present)	
2	1702110	1	Decal - Instructions	
3	1702364	2	Decal - Crushing	
4	3251813	1	Decal - USA	
5	1702361	1	Decal - Electrocution Hazard	
6	1702885	1	Decal - Daily Checklist	
7	1702886	1	Decal - Leveling	
8	1702887	1	Decal - Operation	
9	1702922	1	Decal - Manual Descent	
13	Consult Factory	1	Nameplate, Serial Number	
14	3820006	8	Rivet	
15	1702437	1	Decal - Explosion/Fire Hazard	
16	1702631	1	Decal - Bar Code	
17	1703073	4	Decal - Forklift Area	
18	1702905	1	Decal - Joystick	
19	1703129	1	Decal - Pothole Protection	
20	1703137	1	Decal - Brakes	
21	1703128	1	Decal - Brakes Symbol	
22	1703127	1	Decal - Ground Clearance Symbol	
23	1702282	1	Decal - Warning	
24	3252136	1	Nameplate - Control Box Location	
25	1702921	2	Decal - Arrow	
26	1701612	3	Decal - JLG	
27	1702923	1	Decal - Ground Controls	
28	4420039	16 in/41cm	Tape Friction	
29	1703072	2	Decal - Forklift Area	
30	1702300	2	Decal - Tie-Down	
31	1703191	1	Decal - Tow/Winching	
32	1701612	1	Decal - JLG	
		Ref	DECALS INSTALLATION (OPTIONAL PARTS)	
101	Kit	1	Decal - Capacity	
101	1702108	1	Decal - Capacity (Prior to SN 0130001227)	
101	1703243	1	Decal - Capacity (SN 01320001227 to Present)	
102		Ref	Decal - Model Designation	
102	1702881	1	Decal - Model Designation 10VP	
102	1702882	1	Decal - Model Designation 15VP	
102	1702883	1	Decal - Model Designation 20VP	

SECTION 8 - DECALS

FIGURE 8-2. DECALS INSTALLATION - JAPANESE/LATIN AMERICAN



SECTION 8 - DECALS

FIGURE 8-2. DECALS INSTALLATION - JAPANESE/LATIN AMERICAN

ITEM	PART NUMBER	QTY	DESCRIPTION	REV
		Ref	DECALS INSTALLATION - JAPANESE/LATIN AMERICAN	
	1282534	Ref	DECALS INSTALLATION (STANDARD PARTS)	I
1	1702365	2	Decal - JLG	
4	3251813	1	Decal - USA	
9	1702922	1	Decal - Manual Descent	
13	Consult Factory	1	Nameplate, Serial Number	
14	3820031	8	Rivet	
16	1702631	1	Decal - Bar Code	
17	1703073	4	Decal - Forklift Area	
18	1702905	1	Decal - Joystick	
25	1702921	2	Decal - Arrow	
26	1701612	3	Decal - JLG	
27	1702923	1	Decal - Ground Controls	
28	4420039	16	Tape, Friction	
		in/41cm		
29	1703072	2	Decal - Forklift Area	
30	1702300	2	Decal - Tie-Down	
32	1701612	1	Decal - JLG	
	0256246	Ref	DEALS INSTALLATION - JAPANESE (VARIABLE PARTS)	D
51	1703057	1	Decal - Daily Checklist	
52	1703058	1	Decal - Operation	
53	1703135	1	Decal - Pothole Protection	
54	1703143	1	Decal - Brakes	
55	1703061	1	Decal - Warning	
56	1702476	1	Decal - Instructions	
57	1702495	2	Decal - Crushing	
58	1702456	1	Decal - Electrocution Hazard	
59	1702527	1	Decal - Explosion/Fire Hazard (DC Only)	
60	1703197	1	Decal - Tow/Winching	
61	1703205	1	Decal - Leveling	
62	1703222	1	Decal - Brakes Symbol	
63	1703228	1	Decal - Ground Clearance Symbol	
64	1703234	1	Nameplate - Control Box Location	
	0256248	Ref	DECALS INSTALLATION - LATIN AMERICAN (VARIABLE PARTS)	5
51	1703062	1	Decal - Daily Checklist	
52	1703063	1	Decal - Operation	
53	1703136	1	Decal - Pothole Protection	
54	1703144	1	Decal - Brakes	
55	1703065	1	Decal - Warning	
56	1702473	1	Decal - Instructions	
57	1702492	2	Decal - Crushing	
58	1702453	1	Decal - Electrocution Hazard	
59	1702425	1	Decal	
60	1703198	1	Decal - Tow/Winching	
61	1703202	1	Decal - Leveling	
62	1703219	1	Decal - Brakes Symbol	
63	1703225	1	Decal - Ground Clearance Symbol	
64	1703231	1	Nameplate - Control Box Location	
		Ref	DECALS INSTALLATION (VARIABLE PARTS)	

SECTION 8 - DECALS

ITEM	PART NUMBER	QTY	DESCRIPTION	REV
101	Kit	1	Decal - Capacity	
101	1702056	1	Japanese Spec	
101	1703235	1	Latin America Spec	
102	Kit	1	Decal - Model Designation	
102	1702881	1	Decal - Model Designation 10VP	
102	1702882	1	Decal - Model Designation 15VP	
102	1702883	1	Decal - Model Designation 20VP	

SECTION 9 - RECOMMENDED SERVICE PARTS STOCK

SECTION 9 - RECOMMENDED SERVICE PARTS STOCK

SECTION 9 - RECOMMENDED SERVICE PARTS STOCK

FIGURE 9-1. 10VP/15VP/20VP STANDARD PARTS

ITEM	PART NUMBER	QTY	DESCRIPTION	REV
	Note	Ref	Note: The following lists will service fleets of machine (built to current production per date on the front cover) with emergency repair parts which can be installed in the field parts from the list should be replaced when inventory is depleted to keep service parts stock supplied. For further information, contact your JLG dealer or the JLG parts department.	
		Ref	STANDARD PARTS	
	1060639	1	Cable, (for fleets of 1 to 4)	
	1060639	1	Cable, (for fleets of 5 to 9)	
	1060639	1	Cable, (for fleets of 10 or more)	
	7014117	1	Switch, Micro, (for fleets of 1 to 4)	
	7014117	1	Switch, Micro, (for fleets of 5 to 9)	
	7014117	1	Switch, Micro, (for fleets of 10 or more)	
	1060638	1	Cable, (for fleets of 1 to 4)	
	1060638	1	Cable, (for fleets of 5 to 9)	
	1060638	1	Cable, (for fleets of 10 or more)	
	4360401	1	Switch, Limit, (for fleets of 1 to 4)	
	4360401	1	Switch, Limit, (for fleets of 5 to 9)	
	4360401	1	Switch, Limit, (for fleets of 10 or more)	
	3740120	1	Relay, (for fleets of 1 to 4)	
	3740120	1	Relay, (for fleets of 5 to 9)	
	3740120	1	Relay, (for fleets of 10 or more)	
	4360314	1	Switch, Ground Control, (for fleets of 1 to 4)	
	4360314	1	Switch, Ground Control, (for fleets of 5 to 9)	
	4360314	1	Switch, Ground Control, (for fleets of 10 or more)	
	3740069	1	Relay, (for fleets of 1 to 4)	
	3740069	1	Relay, (for fleets of 5 to 9)	
	3740069	1	Relay, (for fleets of 10 or more)	
	7017701	1	Switch, Push-Pull, (for fleets of 1 to 4)	
	7017701	1	Switch, Push-Pull, (for fleets of 5 to 9)	
	7017701	1	Switch, Push-Pull, (for fleets of 10 or more)	
	7017702	1	Block, Contact - N.O., (for fleets of 1 to 4)	
	7017702	1	Block, Contact - N.O., (for fleets of 5 to 9)	
	7017702	1	Block, Contact - N.O., (for fleets of 10 or more)	
	7017703	1	Block, Contact - N.C., (for fleets of 1 to 4)	
	7017703	1	Block, Contact - N.C., (for fleets of 5 to 9)	
	7017703	1	Block, Contact - N.C., (for fleets of 10 or more)	
	7017700	1	Switch, Key, (for fleets of 1 to 4)	
	7017700	1	Switch, Key, (for fleets of 5 to 9)	
	7017700	1	Switch, Key, (for fleets of 10 or more)	
	7017704	1	Key, Replacement, (for fleets of 1 to 4)	
	7017704	1	Key, Replacement, (for fleets of 5 to 9)	
	7017704	1	Key, Replacement, (for fleets of 10 or more)	
	1600243	1	Control Box Assembly, (for fleets of 1 to 4)	
	1600243	1	Control Box Assembly, (for fleets of 5 to 9)	
	1600243	1	Control Box Assembly, (for fleets of 10 or more)	
	7011639	1	Switch, Timer, (for fleets of 1 to 4)	
	7011639	1	Switch, Timer, (for fleets of 5 to 9)	
	7011639	1	Switch, Timer, (for fleets of 10 or more)	

SECTION 9 - RECOMMENDED SERVICE PARTS STOCK

ITEM	PART NUMBER	QTY	DESCRIPTION	REV
	7011509	1	Breaker, Circuit, (for fleets of 1 to 4)	
	7011509	1	Breaker, Circuit, (for fleets of 5 to 9)	
	7011509	1	Breaker, Circuit, (for fleets of 10 or more)	
	7018514	1	Breaker, Circuit, (for fleets of 1 to 4)	
	7018514	1	Breaker, Circuit, (for fleets of 5 to 9)	
	7018514	1	Breaker, Circuit, (for fleets of 10 or more)	
	7018506	1	Relay, (for fleets of 1 to 4)	
	7018506	1	Relay, (for fleets of 5 to 9)	
	7018506	1	Relay, (for fleets of 10 or more)	
	7013723	4	Filter, Hydraulic, (for fleets of 1 to 4)	
	7013723	8	Filter, Hydraulic, (for fleets of 5 to 9)	
	7013723	12	Filter, Hydraulic, (for fleets of 10 or more)	
	7016714	1	Breather, Hydraulic, (for fleets of 1 to 4)	
	7016714	2	Breather, Hydraulic, (for fleets of 5 to 9)	
	7016714	3	Breather, Hydraulic, (for fleets of 10 or more)	
	4360437	1	Swicth, Limit, (for fleets of 1 to 4)	
	4360437	1	Swicth, Limit, (for fleets of 5 to 9)	
	4360437	1	Swicth, Limit, (for fleets of 10 or more)	
	3990010	2	Diode, (for fleets of 1 to 4)	
	3990010	2	Diode, (for fleets of 5 to 9)	
	3990010	2	Diode, (for fleets of 10 or more)	
	2400006	2	Fuse - 5 Amp, (for fleets of 1 to 4)	
	2400006	2	Fuse - 5 Amp, (for fleets of 5 to 9)	
	2400006	2	Fuse - 5 Amp, (for fleets of 10 or more)	

SECTION 9 - RECOMMENDED SERVICE PARTS STOCK

FIGURE 9-2. 10VP/15VP/20VP VARIABLE PARTS

ITEM	PART NUMBER	QTY	DESCRIPTION	REV
	Note	Ref	Note: The following lists will service fleets of machine (built to current production per date on the front cover) with emergency repair parts which can be installed in the field parts from the list should be replaced when inventory is depleted to keep service parts stock supplied. For further information, contact your JLG dealer or the JLG parts department.	
		Ref	VARIABLE PARTS	
	4360435	1	Switch, Tilt (Optional) (for fleets of 1 to 4)	
	4360435	1	Switch, Tilt (Optional) (for fleets of 5 to 9)	
	4360435	1	Switch, Tilt (Optional) (for fleets of 10 or more)	
	2940082	1	Latch, Gate (Fiberglass Platform) (for fleets of 1 to 4)	
	2940082	1	Latch, Gate (Fiberglass Platform) (for fleets of 5 to 9)	
	2940082	1	Latch, Gate (Fiberglass Platform) (for fleets of 10 or more)	

SECTION 10 - SPECIAL OPTIONS

SECTION 10 - SPECIAL OPTIONS

FIGURE 10-1. SPECIAL OPTIONS

ITEM	PART NUMBER	QTY	DESCRIPTION	REV
	Note	Ref	Note: The following list to accomodate machines with the special equipment. Options may not be applicable to all models. For more specific information contact the JLG Parts Department.	
		Ref	MISCELLANEOUS OPTIONS LIST	
	0256789	Ref	Camera Mount Asembly	
	1670815	Ref	Cover - Travel/Storage	
	0256719	Ref	CSA Decals Installation	
		Ref	Special Tools:	
	0080229	1	Adapter, Torque Setting Socket (To Set Slip-Clutch Torque)	
	2900868	1	Computer Analyzer Kit (Includes Analyzer, Cable and Instruction Sheet)	
	7002821	1	Crimper (For Wire to Pin/Socket Connections)	
	7002823	1	Extractor (For Removal of Pins/Sockets from Connectors)	
	4460467	1	Extractor 16-18 Gauge (For Removal of Pins/Sockets from Deutsch Connectors)	
	4460510	1	Extractor 12-14 Gauge (For Removal of Pins/Sockets from Deutsch Connectors)	
	7016654	1	Screwdriver, Magnetic	
	7004275	1	Seal Tool - 1in	
	7004276	1	Seal Tool - 1 1/2in	
	7002826	1	Seal Tool - 2in	
	8896941	1	Stripper, Wire	

PART NUMBER INDEX

SECTION 10 - SPECIAL OPTIONS

0080229.....90	0400154.....31	1060380.....27, 58	1702923.....81, 83
0100011....10, 13, 14, 15, 19, 23, 28, 57, 61	0400155.....32	1060541.....41, 45, 49	1703057.....83
0100019....10, 15, 27, 50, 61	0440221.....9, 14	1060546.....41, 45, 49	1703058.....83
0100020.....69	0561150.....50	1060564.....27	1703061.....83
0100035.....9, 15, 19	0561151.....50	1060598.....46	1703062.....83
0100051.....23	0561156.....50	1060616.....76	1703063.....83
0100062.....50	0561159.....50	1060618.....76	1703065.....83
0100071.....41, 45, 50	0630446.....9, 13	1060619.....76	1703072.....81, 83
0140022.....37	0630486.....57	1060620.....76	1703073.....81, 83
0140033.....37	0630504.....23	1060638.....19, 86	1703087.....58
0181832.....9	0630512.....13	1060639.....9, 13, 86	1703088.....58
0181833.....9	0641404...10, 14, 19, 28, 41, 45, 50	1100100.....19	1703116.....58
0181857.....23	0641406, 9, 13, 23, 27, 37, 41, 45, 49	1180344.....28	1703117.....58
0254879.....57	0641408...13, 28, 37, 57	1260298.....50	1703122.....58
0254880.....57	0641410.....27, 45, 49	1260299.....50	1703123.....58
0254980.....61	0641414.....57	1260305.....49, 50	1703127.....81
0255019.....53	0641416.....28, 57, 61	1260306.....49, 50	1703128.....81
0255036.....57	0641505.....10, 14	1271238.....41, 45, 49	1703129.....81
0255040.....58	0641507.....37	1271239.....49	1703135.....83
0255853.....58	0641508.....35	1271312.....45, 49	1703136.....83
0256088.....19	0641518.....61	1271313.....41, 45, 49	1703137.....81
0256132.....28	0641522.....35	1271314.....45, 49	1703143.....83
0256133.....28	0641608.....9, 13, 23	1271316.....41	1703144.....83
0256134.....28	0641609, 10, 13, 14, 15, 53	1282534.....83	1703175.....53
0256143.....23	0641610...15, 37, 41, 45, 49	1282728.....53	1703191.....81
0256167.....10	0641612.....10, 14	1320041.....10, 14	1703197.....83
0256169.....10	0641620.....49	1320110.....61	1703198.....83
0256171.....10	0641634.....14	1320211.....57	1703202.....83
0256197.....10, 14	0641707.....9	1320218.....58	1703205.....83
0256240.....81	0641711.....15	1320219.....57, 61	1703219.....83
0256246.....83	0641810.....10, 14	1320227.....27	1703222.....83
0256247.....81	0641812.....53	1320238.....27	1703225.....83
0256248.....83	0721005.....27	1400126.....14	1703228.....83
0256442.....58	0740602.....41, 46, 50	1600238.....23	1703231.....83
0256538.....37	0741407.....23	1600243.....27, 86	1703234.....83
0256539.....37	0741605.....23	1670815.....90	1703235.....84
0256540.....37	0750802.....58	1683201...41, 45, 49, 65	1703243.....81
0256541.....37	0801048.....45	1701500.....53	1703455.....53
0256545.....37	0801069.....41	1701612.....81, 83	2220472.....69
0256546.....37	0801070.....49	1702056.....84	2220473.....69
0256559.....53	0860946.....27	1702108.....81	2220507.....69
0256719.....90	0861039.....23	1702110.....81	2220603.....69
0256789.....90	0880124.....10, 14	1702282.....81	2220875.....69
0256791.....10	0880125.....10, 14	1702300.....81, 83	2221021.....69
0256792.....10	0901992.....41, 45, 49	1702361.....81	2221022.....69
0256793.....10, 14	0901993.....45, 49	1702364.....81	2400006.....76, 87
0256851.....9, 14	0902042.....41, 45, 49	1702365.....58, 81, 83	2420140.....10, 14
0256912.....23, 57	0902047.....41, 45, 49	1702425.....83	2420165.....37
0256926.....23, 57	0902079.....57	1702437.....81	2680025.....17
0256928.....23, 61	0902084.....49	1702453.....83	2680432.....23
0257114.....53	0902248.....23	1702456.....83	2792252.....69
0257228.....13, 14	0902250.....23	1702473.....83	2792253.....69
0257229.....13	0902256.....10, 13	1702476.....83	2820086.....9, 13
0257230.....13	0902262.....19	1702492.....83	2860026.....13
0257237.....13	090227.....37	1702495.....83	2860027.....14
0257241.....13, 14	0902285.....41, 46, 50	1702527.....83	2860028.....17
0362347.....61	0902295.....37	1702612.....53	2900868.....23, 90
0362377.....41, 45, 49	0902296.....37	1702631.....81, 83	2901420.....42
0362384.....61	0902296.....37	1702881.....81, 84	2901421.....46
0362604.....23	0902354.....37	1702882.....81, 84	2901422.....50
0362658.....23	0902356.....37	1702883.....81, 84	2920119.....37
0400122.....23	0940074.....27	1702885.....81	2920127.....58
0400139.....31	0960407.....28	1702886.....81	2920146.....37
0400142.....32	1020008.....27	1702887.....81	2940082.....61, 88
0400152.....31		1702905.....81, 83	3020017.....10, 13, 19
		1702921.....81, 83	3020028.....41, 45, 50
		1702922.....81, 83	3160212.....9, 17

SECTION 10 - SPECIAL OPTIONS

3160217 14, 17	3640966 57	4460023 27, 77	4761000 ... 19, 23, 27, 37, 38, 41, 45, 49
3251813 81, 83	3640969 57	4460044 76	4761400 49
3252136 81	3640990 61	4460121 41, 45, 50	4761600 41, 45
3271805 53	3740069 23, 37, 86	4460190 27	4821228 10, 14
3300047 28	3740120 23, 86	4460227 77	4845123 9
3300151 61	3760393 9, 13	4460267 76, 77	4845132 46
3300202 23	3820006 81	4460268 76, 77	4845244 19
3300356 61	3820024 61	4460320 76, 77	4845245 19
3310601 37	3820031 83	4460368 76	4845247 10
3310805 23	3900177 61	4460424 76, 77	4845248 9
3311001 ... 23, 27, 37, 38, 61	3900187 41, 45, 49	4460425 58	4845258 9, 13
3311005 61	3900191 41, 45, 49	4460445 77	4845260 10, 13
3311401 10, 14, 37	3900192 41, 45, 49	4460467 77, 90	4845261 10, 13, 14
33114059, 23, 27, 37, 41, 45, 49, 57, 61	3900200 27	4460510 77, 90	4845265 27
3311501 57, 61	3900202 61	4460566 27	4845266 23
3311505 37, 57, 61	3900203 61	4460639 77	4845291 10, 14
3311601 ... 41, 45, 49, 53	3900205 41, 45, 50	4460640 77	4845339 27
33116059, 10, 13, 14, 15, 23, 27, 38, 41, 45, 49	3900206 41, 45, 49	4460643 76, 77	4845345 53
3311705 15	3900212 27	4460644 76	4845363 9
3311805 10, 14	3900221 9, 15	4460645 76	4845364 9
3340704 41, 45, 49	3900228 27	4460646 76	4845396 19
3340709 41, 45, 49	3910608 37	4460647 76	4845397 19
3340746 61	3910610 19	4460648 ... 10, 13, 76, 77	4845401 10, 13
3340754 61	3910624 19	4460662 ... 19, 41, 46, 50	4845473 14
3380424 27	3910812 23	4460671 77	4845474 13
3421453 58	3911010 23, 37, 38	4460672 77	4845478 14
3422265 50	3911020 41, 46, 50	4460681 76	4845479 13
3422266 50	3911032 61	4460682 77	4860161 9, 13
3422346 50	3911410 37	4460683 77	4860163 9, 13
3422361 41, 45, 49	3911416 37	4460684 76	4860164 9, 13
3422551 27, 58	3930808 9, 15	4566486 49	4921812 28, 76
3422585 19	3990010 76, 87	4566487 45, 49	4921815 28, 76
3422586 19	4040259 14	4566563 61	4921816 28, 76
3440520 14	4060092 27	4566780 57, 61	4921823 76
3450201 50	4060804 61	4566838 41, 45	4921824 76
3450302 19	4060877 41, 45, 50	4566846 41	4921825 76
3510454 61	4060882 61	4566950 69	4921826 76
3510471 57	4070860 41, 45, 49	4566960 41, 46	4921878 76
3510472 57	4070861 41, 45, 49	4567186 69	4921879 76
3510477 61	4070862 41, 45, 49	4640900 69	4921880 76
3520072 61	4070875 45, 49	4640956 69	4921888 76
3537698 57	4070876 45, 49	4656847 58	4921948 76
3538105 57	4070877 45, 50	4700952 11, 14	4932841 76
3538591 53	4070890 61	4700953 11, 14	7002821 77, 90
3539565 23	4070894 61	4700954 11, 14	7002823 77, 90
3539612 28	4070955 57	4711400 ... 10, 14, 19, 23, 27, 37, 41, 45, 49, 57	7002826 90
3539659 9, 13	4070956 57	4711500 ... 10, 14, 37, 57, 61	7003245 65
3539660 9, 13	4070958 61	4711600 38, 53	7003246 65
3539814 53	4160124 41, 45, 49	4711700 9, 15	7003247 65
3539939 19	4160125 61	4711700 9, 15	7003248 65
3539964 37	4160130 27	4712600 49	7003249 65
3570094 23	4160154 9, 13	4740414 41, 45, 49	7003250 65
3570168 14	4160158 19	4740428 61	7004275 90
3570169 14	4160159 9, 13	4740429 61	7004276 90
3570172 13	4220160 41, 45, 50	4750400 28	7011505 31, 32
3580217 41, 45, 49	4240032 19	4750600 19	7011507 31, 32
3580226 49	4280296 27	4750800 9, 15, 23	7011509 31, 32, 87
3580227 49	4300106 37	47510009, 13, 19, 23, 28, 37, 38, 61	7011528 31, 32
3580228 41, 45, 49	4300111 50	4751400, 9, 13, 23, 57, 61	7011542 31, 32
3580231 27	4300115 61	4751500 ... 27, 41, 45, 49, 57, 61	7011548 31, 32
3600254 35, 69	4360314 23, 86	47516009, 10, 13, 14, 15, 23, 41, 45, 49	7011552 32
3600255 35, 69	4360397 19	4751800 10, 14, 53	7011559 31, 32
3640923 61	4360401 19, 86	4760600 37	7011560 32
3640924 61	4360435 37, 88		7011596 31, 32
	4360437 ... 41, 46, 50, 87		7011636 32
	4420039 57, 81, 83		7011639 31, 32, 86
	4420055 27		

SECTION 10 - SPECIAL OPTIONS

7011690.....	31	7013766.....	35	7016716.....	35	7018007.....	17
7011691.....	31, 32	7013770.....	35	7016717.....	35	7018008.....	17
7011692.....	31, 32	7013791.....	35	7016718.....	35	7018009.....	17
7011693.....	31	7013792.....	35	7016719.....	35	7018010.....	17
7011696.....	32	7013793.....	35	7016721.....	35	7018011.....	17
7011698.....	31, 32	7014117.....	9, 15, 86	7016722.....	35	7018012.....	17
7012637.....	24	7014118.....	9, 15	7016723.....	35	7018013.....	17
7013701.....	35	7014119.....	9, 15	7016724.....	35	7018014.....	17
7013708.....	35	7014120.....	9, 15	701690.....	32	7018015.....	17
7013714.....	35	7014122.....	9	7017700.....	24, 86	7018019.....	17
7013715.....	35	7014123.....	9	7017701.....	23, 86	7018026.....	17
7013716.....	35	7014124.....	9	7017702.....	24, 86	7018505.....	31, 32, 77
7013717.....	35	7014125.....	9	7017703.....	23, 86	7018506.....	31, 32, 87
7013720.....	35	7016319.....	37	7017704.....	24, 86	7018514.....	31, 32, 87
7013722.....	35	7016320.....	37	7017705.....	24	7018515.....	32
7013723.....	35, 87	7016372.....	37	7017706.....	24	7018534.....	31
7013727.....	35	7016619.....	13	7017713.....	24	7018535.....	32
7013728.....	35	7016654.....	90	7017715.....	23	7018536.....	32
7013733.....	35	7016685.....	14	7018000.....	17	7018537.....	32
7013743.....	35	7016710.....	35	7018001.....	17	7018541.....	32
7013747.....	35	7016711.....	35	7018002.....	17	8896941.....	77, 90
7013750.....	35	7016712.....	35	7018003.....	17	PMP835E11.....	35
7013758.....	35	7016713.....	35	7018004.....	17		
7013759.....	35	7016714.....	35, 87	7018005.....	17		



Corporate Office
JLG Industries, Inc.
1 JLG Drive
McConnellsburg, PA 17233-9533 USA
☎ **(717) 485-5161 (Corporate)**
☎ **(877) 554-5438 (Customer Support)**
📠 **(717) 485-6417**

Visit our website for JLG Worldwide Locations.
www.jlg.com



OSHKOSH™