



Illustrated Parts Manual

Models
LIFTLUX 153-12
&
LIFTLUX 180-12

Prior to SN 20463
excluding
SN 18432 & SN 19930

3121311

May 29, 2013



REVISION LOG

July 12, 2005 - Original Issue of Manual

January 31, 2006 - Revised Manual (Edited to B/M 0010654 Revision 4 & B/M 0010655 Revision 5)

November 30, 2006 - Revised Manual (Edited to B/M 0010654 Revision 7 & B/M 0010655 Revision 8)

January 31, 2007 - Revised Manual (Edited to B/M 0010654 Revision 7 & B/M 0010655 Revision 8)

September 15, 2007 - Revised Manual (Edited to B/M 0010654 Revision 9 & B/M 0010655 Revision 10)

January 31, 2008 - Revised Manual (Edited to B/M 0010654 Revision 9 & B/M 0010655 Revision 10)

August 15, 2008 - Revised Manual (Edited to B/M 0010654 Revision 9 & B/M 0010655 Revision 10)

March 30, 2009 - Revised Manual (Edited to B/M 0010654 Revision 9 & B/M 0010655 Revision 10)

May 29, 2013 - Revised Manual

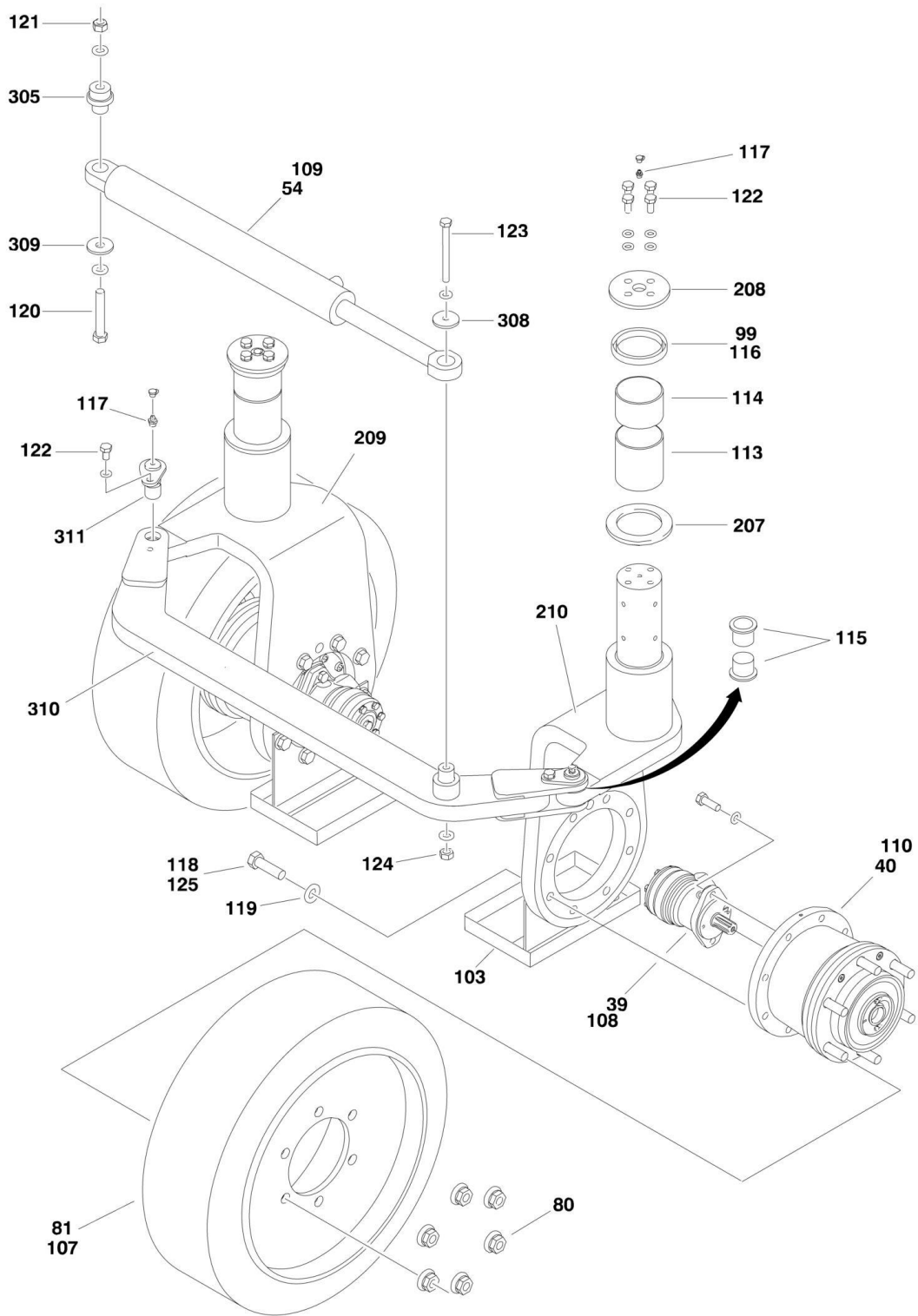
TABLE OF CONTENTS

SECTION 1 - FRAME.....	7
FIGURE 1-1. STEERING AND WHEEL DRIVE INSTALLATION	8
FIGURE 1-2. DRIVE MOTOR ASSEMBLY	10
FIGURE 1-3. DRIVE HUB ASSEMBLY	12
FIGURE 1-4. REAR AXLE INSTALLATION	16
FIGURE 1-5. LADDER AND FRAME COMPONENTS INSTALLATION	18
SECTION 2 - GROUND CONTROLS	21
FIGURE 2-1. LEFT AND RIGHT SIDE COMPONENTS INSTALLATION	22
FIGURE 2-2. MAIN VALVE ASSEMBLY	26
FIGURE 2-3. HAND PUMP ASSEMBLY	28
FIGURE 2-4. MAIN TERMINAL BOX	30
FIGURE 2-5. HOODS INSTALLATION	32
SECTION 3 - SCISSORS ARMS	35
FIGURE 3-1. SCISSORS ARMS INSTALLATION.....	36
FIGURE 3-2. SCISSORS PROTECTION INSTALLATION.....	44
SECTION 4 - PLATFORM.....	47
FIGURE 4-1. PLATFORM AND ACCESSORIES INSTALLATION.....	48
FIGURE 4-2. CONSOLE BOX INSTALLATION	52
SECTION 5 - CYLINDER.....	55
FIGURE 5-1. LIFTING CYLINDER ASSEMBLY	56
FIGURE 5-2. STEERING CYLINDER ASSEMBLY (Prior to SN 1200009628).....	60
FIGURE 5-3. STEERING CYLINDER ASSEMBLY (SN 1200009628 through 1200020463)	62
SECTION 6 - HYDRAULIC	65
FIGURE 6-1. HYDRAULIC DIAGRAM.....	66
SECTION 7 - ELECTRICAL	71
FIGURE 7-1. ELECTRICAL PLANS	72
SECTION 8 - DECALS.....	83
FIGURE 8-1. DECAL INSTALLATION.....	84
SECTION 9 - RECOMMENDED SERVICE PARTS STOCK	87
FIGURE 9-1. MODELS LIFTLUX 153-12 AND LIFTLUX 180-12 STANDARD PARTS	88
FIGURE 9-2. MODELS LIFTLUX 153-12 AND LIFTLUX 180-12 VARIABLE PARTS	90
SECTION 10 - SPECIAL OPTIONS.....	91
FIGURE 10-1. SPECIAL OPTIONS.....	92
PART NUMBER INDEX	93

SECTION 1 - FRAME

SECTION 1 - FRAME

FIGURE 1-1. STEERING AND WHEEL DRIVE INSTALLATION



SECTION 1 - FRAME

FIGURE 1-1. STEERING AND WHEEL DRIVE INSTALLATION

ITEM	PART NUMBER	QTY	DESCRIPTION	REV
		Ref	FINAL ASSEMBLY LIST COMPONENTS	
	0010654	Ref	Final Assembly List Components 153-12	9
	0010655	Ref	Final Assembly List Components 180-12	10
39	H000193	2	Motor Assembly, Drive (See DRIVE MOTOR ASSEMBLY for Breakdown)	
40	H000218	2	Hub Assembly, Drive (See DRIVE HUB ASSEMBLY for Breakdown)	
54		Ref	Cylinder, Steering Options (See CYLINDER SECTION for Breakdown):	
54	H000683	1	Cylinder, Steering (Prior to SN 1200009628)	
54	H900015	1	Cylinder, Steering (SN 1200009628 through 1200020463)	
80	S003991	12	Wheel Nut	
81	S004091	4	Tire and Wheel Assembly (Rear Not Shown)	
99	S001832	2	Seal	
	S015312-120-00-0	Ref	STEERING INSTALLATION	2-B
103	S200239	2	Pan, Oil	
107	S004091	2	Tire and Wheel Assembly	
108	H000193	2	Motor Assembly, Drive (See DRIVE MOTOR ASSEMBLY for Breakdown)	
109		Ref	Cylinder, Steering Options (See CYLINDER SECTION for Breakdown)	
109	H000683	1	Cylinder, Steering (Prior to SN 1200009628)	
109	H900015	1	Cylinder, Steering (SN 1200009628 through 1200020463)	
110	H000218	2	Hub Assembly, Drive (See DRIVE HUB ASSEMBLY for Breakdown)	
113	S001811	2	Bushing	
114	S001810	2	Bushing	
115	S000264	4	Bushing	
116	S001832	2	Seal	
117	S000141	4	Fitting, Grease	
118	0771619	8	Bolt, M16x55	
119	5241600	16	Washer, M16 Hardened	
120	0701627	1	Bolt, M16x100	
121	3291605	1	Nut, M16	
122	0761212	4	Bolt, M12x25	
123	0701229	1	Bolt, M12x120	
124	3291205	1	Nut, M12	
125	0771620	8	Bolt, M16x60	
	S015312-120-01-0	Ref	STEERING SPINDLE INSTALLATION	A
207	S000242	2	Washer, Thrust	
208	S200404	2	Cap	
209	S006660	1	Spindle, Right	
210	S006610	1	Spindle, Left	
	S015312-120-02-0	Ref	TIE ROD INSTALLATION	
305	S900131	1	Pin, Steering Cylinder to Frame	
308	S900133	1	Washer	
309	S900134	1	Washer	
310	S006808	1	Rod, Tie	
311	S200403	2	Pin	

SECTION 1 - FRAME

FIGURE 1-2. DRIVE MOTOR ASSEMBLY

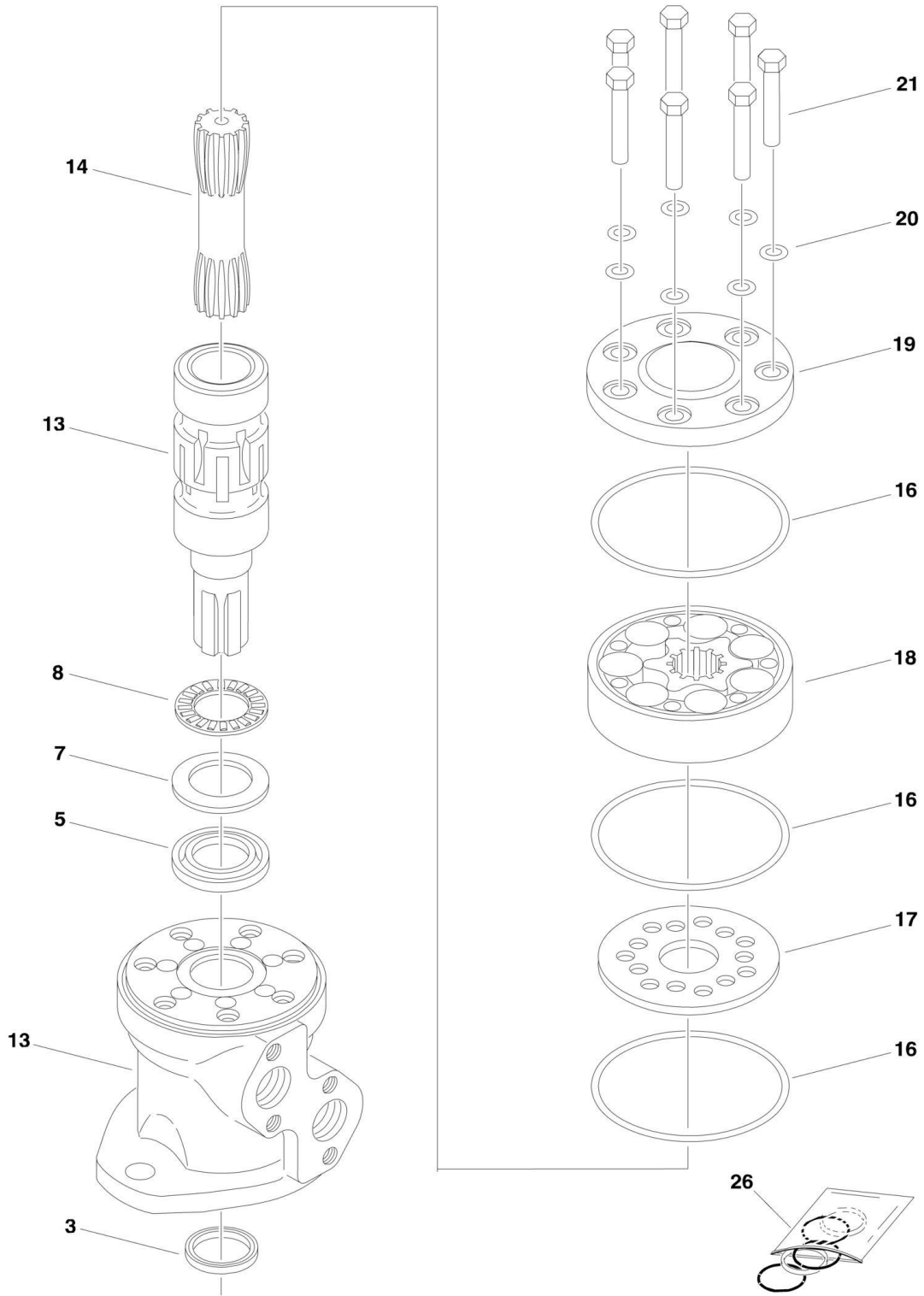
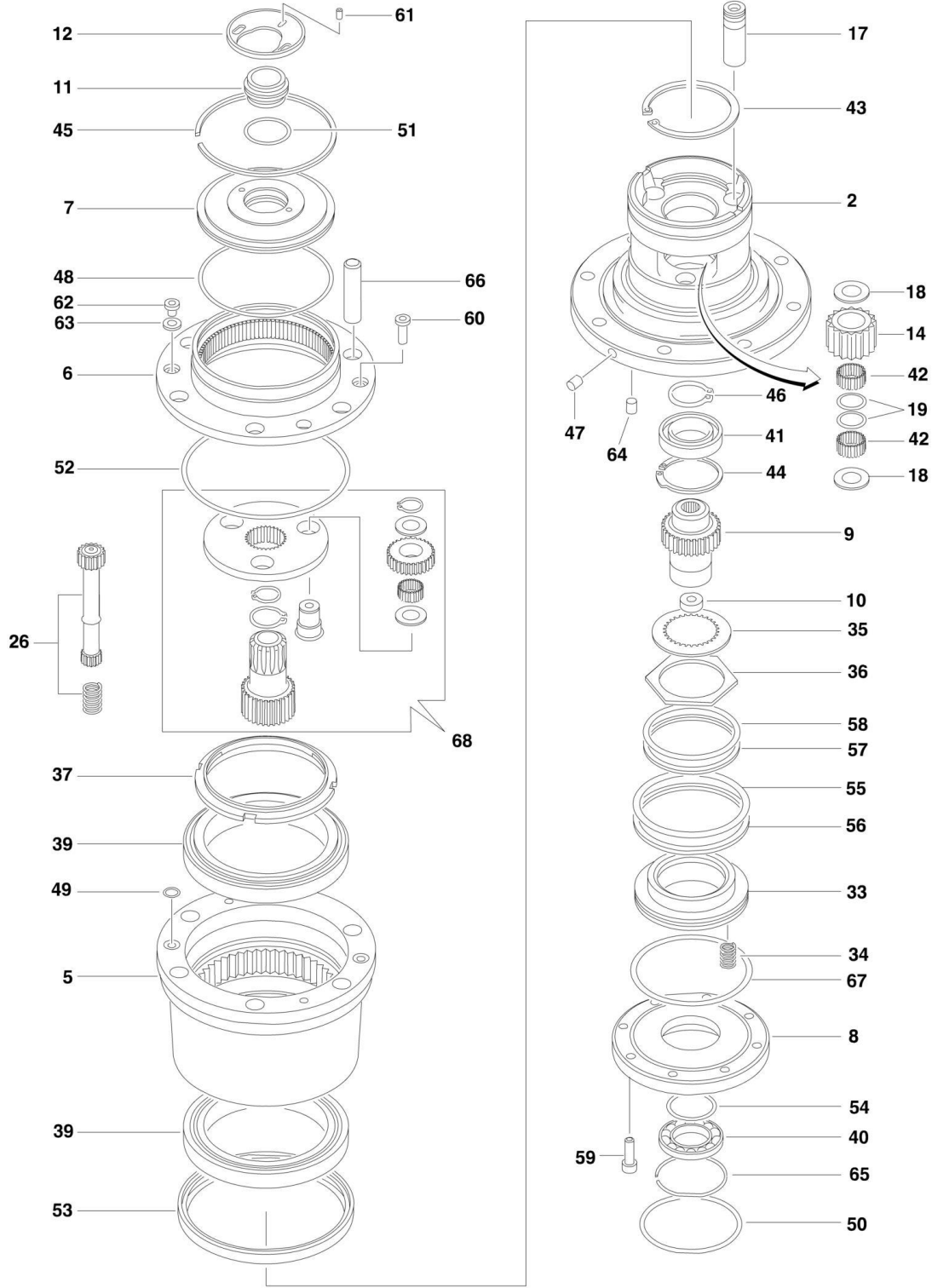


FIGURE 1-2. DRIVE MOTOR ASSEMBLY

ITEM	PART NUMBER	QTY	DESCRIPTION	REV
	H000193	Ref	DRIVE MOTOR ASSEMBLY	D
3	7027861	1	Seal, Dust	
5	Kit	1	Seal, Shaft	
7	7020128	1	Race, Bearing	
8	7020129	1	Bearing, Needle	
13	Not Available	1	Shaft and Housing	
14	7027938	1	Shaft, Cardan	
16	Kit	3	O-Ring	
17	7027939	1	Plate, Distributor	
18	Not Available	1	Gear Set	
19	7027940	1	Cover, End	
20	Kit	7	Washer	
21	Not Available	7	Screw M8 x 45mm	
26	7020127	1	Seal Kit - H000193 Motor (Includes Items 3, 5, 16 & 20)	

SECTION 1 - FRAME

FIGURE 1-3. DRIVE HUB ASSEMBLY



SECTION 1 - FRAME

FIGURE 1-3. DRIVE HUB ASSEMBLY

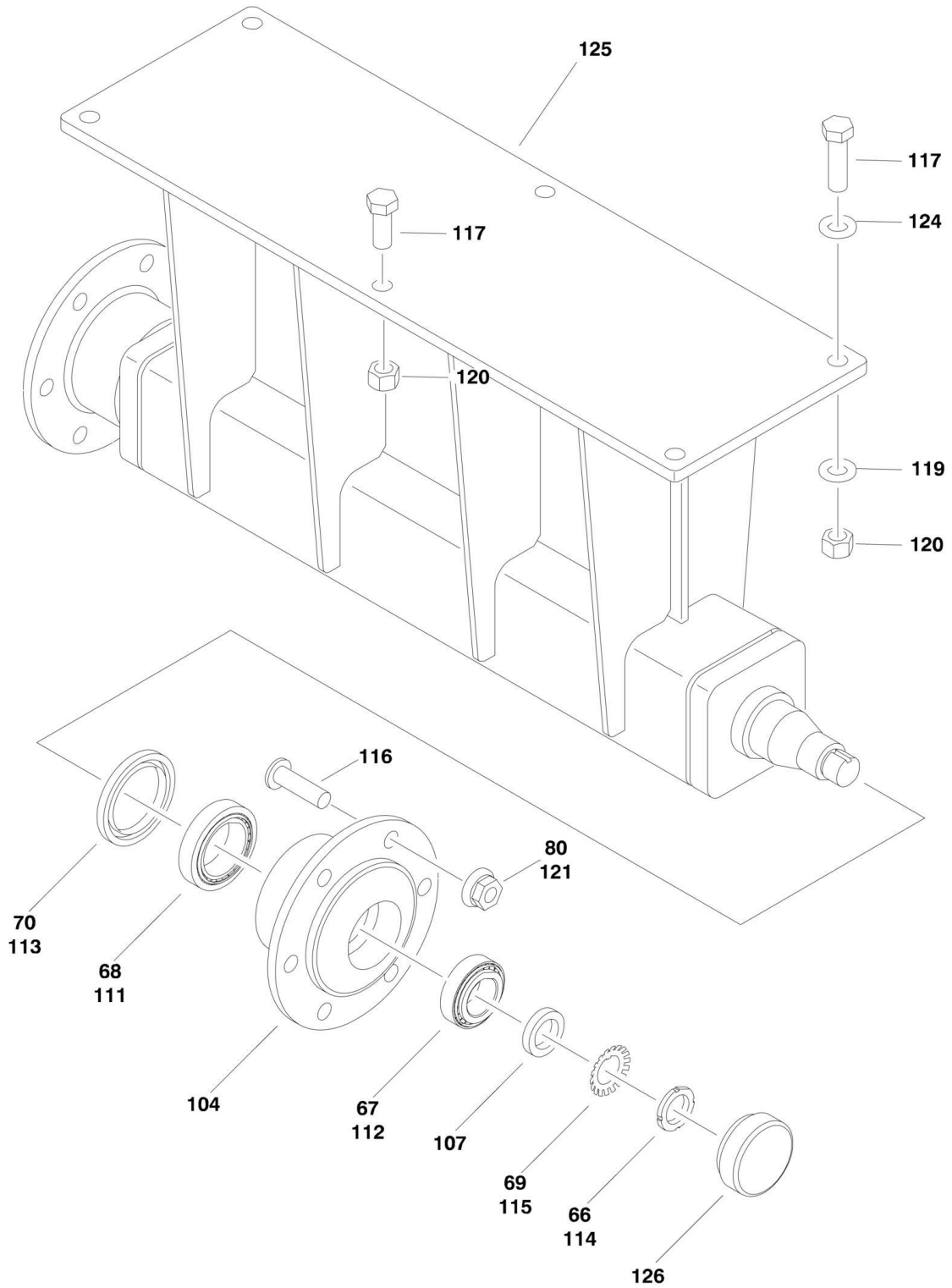
ITEM	PART NUMBER	QTY	DESCRIPTION	REV
	H000218	Ref	DRIVE HUB ASSEMBLY	C
2	Not Available	1	Spindle	
5	Not Available	1	Hub	
6	70000239	1	Gear Ring	
7	Not Available	1	Cover	
8	Not Available	1	Flange	
9	Not Available	1	Coupling	
10	Not Available	1	Washer, Thrust	
11	Not Available	1	Washer, Thrust	
12	Not Available	1	Circlip	
14	Not Available	3	Gear, Planetary	
17	Not Available	3	Pin	
18	Not Available	6	Washer, Thrust	
19	Not Available	6	Spacer	
26	70000240	1	Sun Pinion	
33	Not Available	1	Piston	
34	70000241	16	Spring	
35	70000242	5	Disc	
36	70000243	6	Disc	
37	70000244	1	Lock Nut	
39	70000245	2	Bearing	
40	70000246	1	Bearing	
41	70000247	1	Bearing	
42	Not Available	6	Bearing	
43	Not Available	1	Circlip	
44	Not Available	1	Circlip	
45	Not Available	1	Disc	
46	Not Available	1	Circlip	
47	Not Available	1	Plug	
48	70000248	1	O-Ring	
49	70000249	2	O-Ring	
50	70000250	1	O-Ring	
51	70000251	1	O-Ring	
52	70000252	1	O-Ring	
53	70000253	1	Oil Seal	
54	70000254	1	Gasket	
55	70000255	1	O-Ring	
56	70000256	1	Blocking Ring	
57	70000257	1	O-Ring	
58	70000258	1	Blocking Ring	
59	Not Available	8	Screw	
60	Not Available	2	Screw	
61	Not Available	2	Screw	
62	Not Available	2	Plug	
63	Not Available	2	Washer	
64	Not Available	1	Plug	
65	Not Available	1	Disc	
66	70000259	6	Stud	
67	70000260	1	O-Ring	
68	70000261	1	Gear Kit, Reduction	

SECTION 1 - FRAME

ITEM	PART NUMBER	QTY	DESCRIPTION	REV
		Ref	Note: No seal kit available. Purchase individual seals.	

SECTION 1 - FRAME

FIGURE 1-4. REAR AXLE INSTALLATION



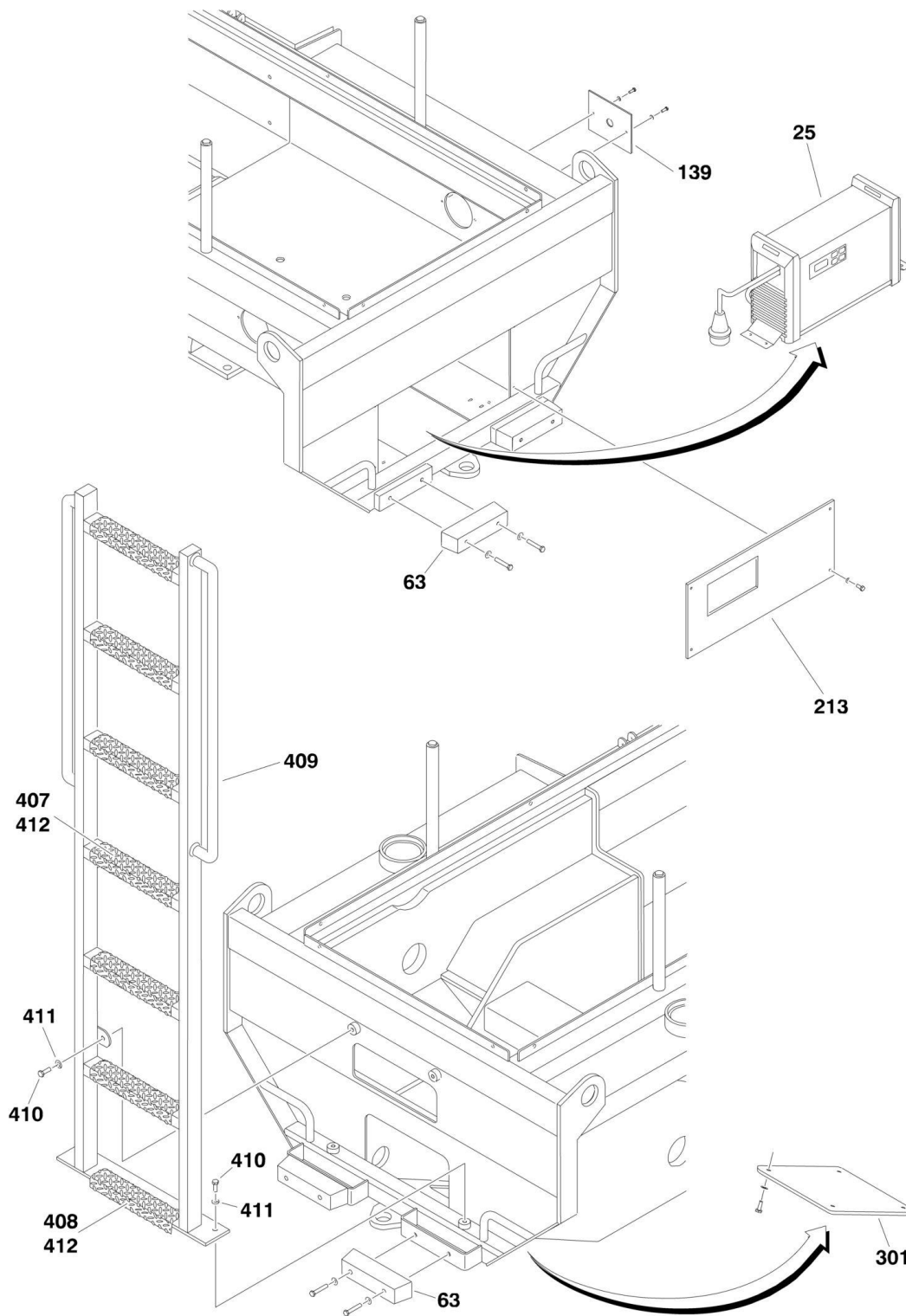
SECTION 1 - FRAME

FIGURE 1-4. REAR AXLE INSTALLATION

ITEM	PART NUMBER	QTY	DESCRIPTION	REV
		Ref	FINAL ASSEMBLY LIST COMPONENTS	
	0010654	Ref	Final Assembly List Components 153-12	9
	0010655	Ref	Final Assembly List Components 180-12	10
66	S000258	2	Nut, Hub	
67	S000259	2	Bearing, Outer	
68	S000260	2	Bearing, Inner	
69	S000261	2	Lock, Hub Nut	
70	S000262	2	Seal	
80	S003991	12	Nut, Wheel	
	S015312-130-00-0	Ref	REAR AXLE INSTALLATION	1
104	S200407	2	Hub	
107	S900218	2	Washer	
111	S000260	2	Bearing, Inner	
112	S000259	2	Bearing, Outer	
113	S000262	2	Seal	
114	S000258	2	Nut, Hub	
115	S000261	2	Lock, Hub Nut	
116	S000090	12	Stud, Wheel	
117		Ref	Bolt, M20x120	
118		Ref	Stud W/Reduced Shank E31x60	
119	5242000	4	Washer	
120	3332015	6	Locknut, M20	
121	S003991	12	Nut, Wheel	
122	0762019	2	Bolt, M20x55	
124	4812500	4	Washer, M20	
125	S200405	1	Axle Weldment, Rear	
126	S200406	2	Cap, Hub	

SECTION 1 - FRAME

FIGURE 1-5. LADDER AND FRAME COMPONENTS INSTALLATION



SECTION 1 - FRAME

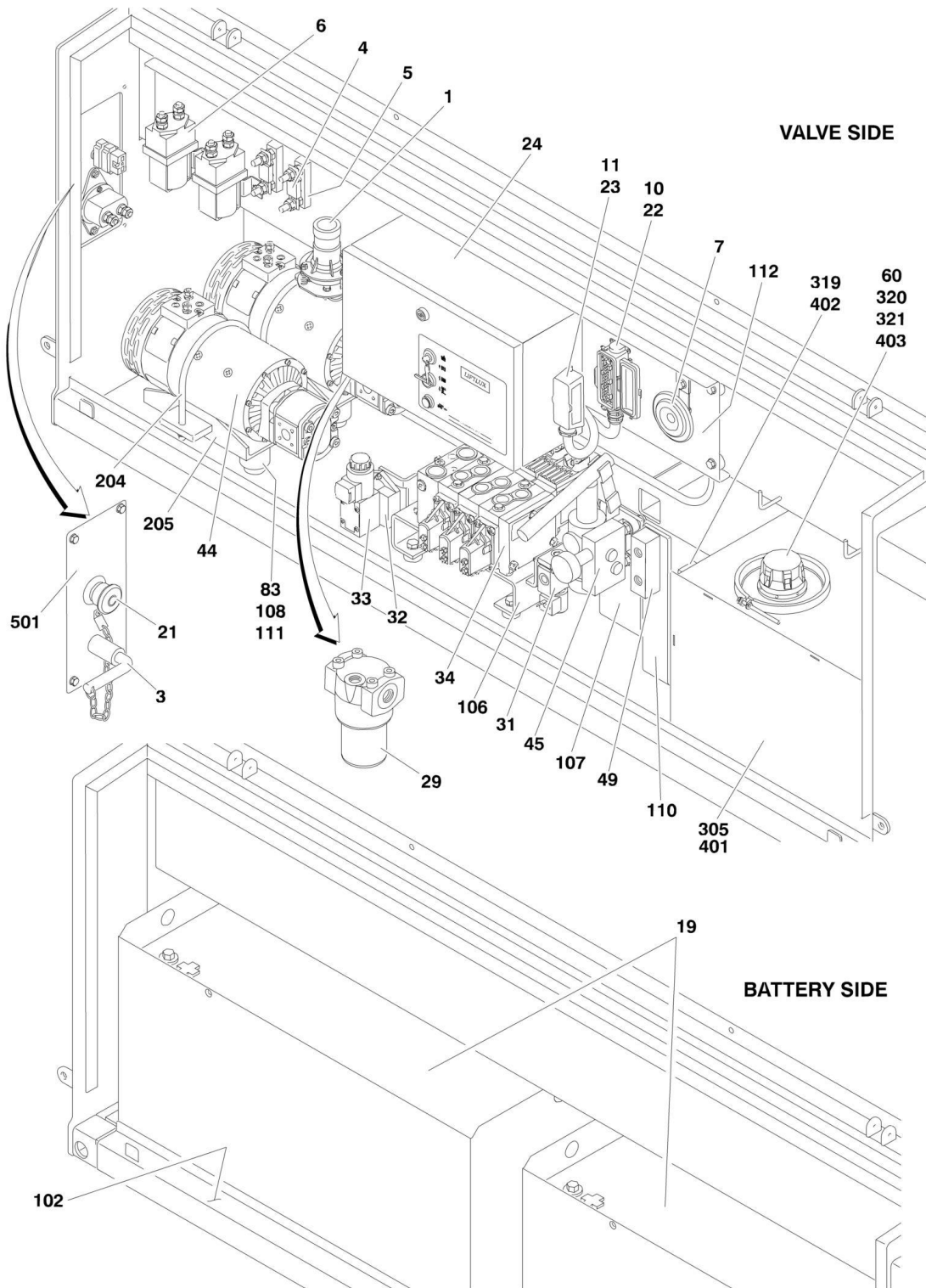
FIGURE 1-5. LADDER AND FRAME COMPONENTS INSTALLATION

ITEM	PART NUMBER	QTY	DESCRIPTION	REV
		Ref	FINAL ASSEMBLY LIST COMPONENTS	
	0010654	Ref	Final Assembly List Components 153-12	9
	0010655	Ref	Final Assembly List Components 180-12	10
25		Ref	Charger, Battery Options:	
25	E000564	1	Single Voltage (240V)	
25	70001010	1	Fuse, 80A Secondary	
25	70001009	1	Cord, 240V Electric	
25	70001011	1	Cable, Output	
25	E000600	1	Dual Voltage (110/245V)	
25	70001012	1	Fuse, 63A Secondary	
25	70001013	1	Fuse, 35A Front	
25	70001014	1	Cord, 110V Electric	
25	70001015	1	Cord, 230V Electric	
25	70001016	1	Cable, Secondary	
63	S000055	4	Bumper	
	S015312-110-01-1	Ref	MAIN FRAME STRUCTURE ASSEMBLY	1-C
139	S900006	2	Plate, Scissor Arm Pin Cover	
	S015312-110-02-0	Ref	FRAME END PLATE ASSEMBLIES	1
213	S900185	1	Plate, Charger Cover	
	S015312-110-48-0	Ref	COVER PLATE	
301	S900136	1	Plate, Frame Access Cover	
	S015312-180-00-0	Ref	LADDER INSTALLATION	
407	S004500	AR	Plate, Step	
408	S004501	1	Plate, Step	
409	S200410	1	Ladder	
410	0761010	4	Bolt, M10x20	
411	4832000	4	Lockwasher, M10	
412	3820510	AR	Rivet, M5	

SECTION 2 - GROUND CONTROLS

SECTION 2 - GROUND CONTROLS

FIGURE 2-1. LEFT AND RIGHT SIDE COMPONENTS INSTALLATION



SECTION 2 - GROUND CONTROLS

FIGURE 2-1. LEFT AND RIGHT SIDE COMPONENTS INSTALLATION

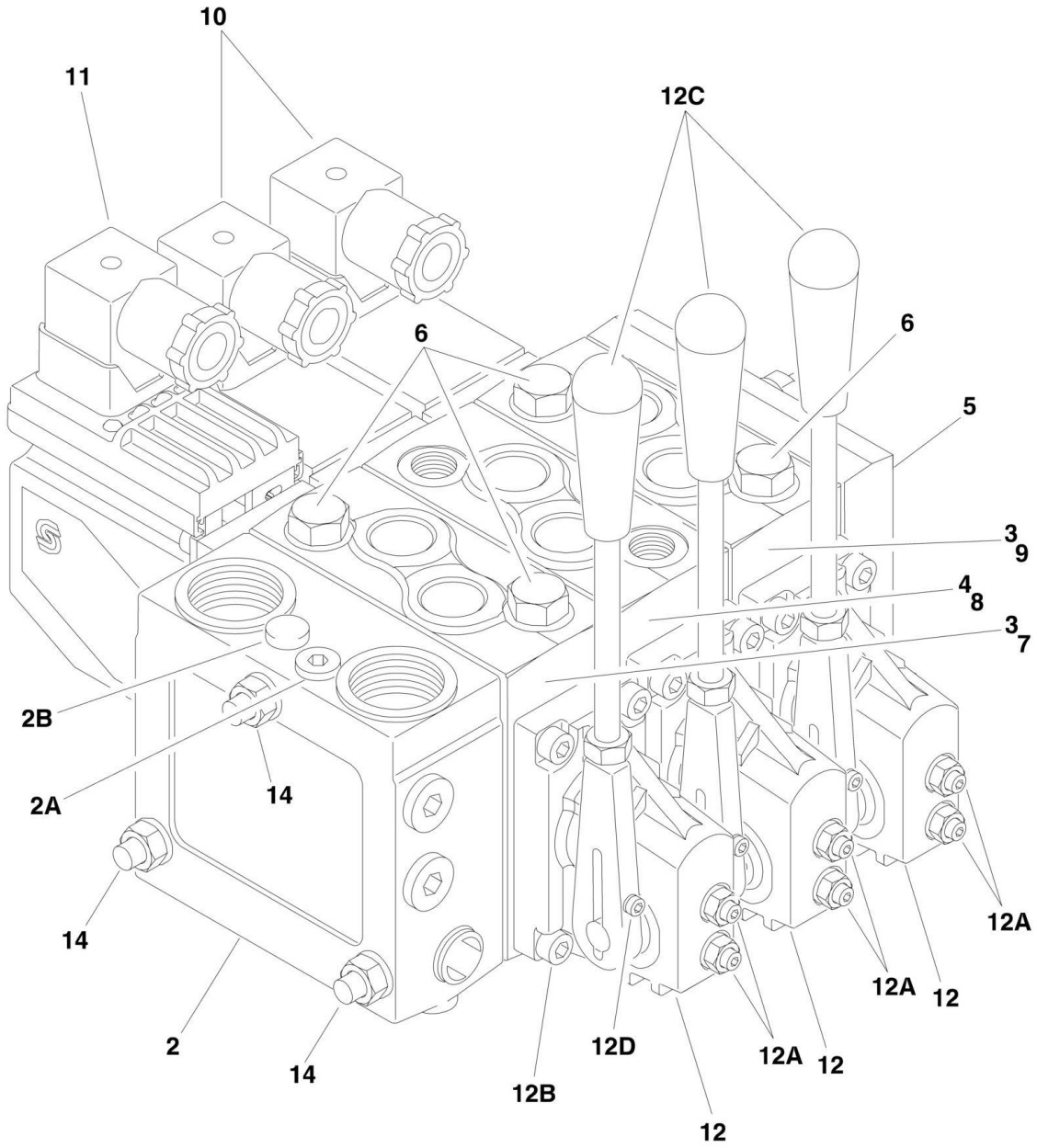
ITEM	PART NUMBER	QTY	DESCRIPTION	REV
		Ref	FINAL ASSEMBLY LIST COMPONENTS	
	0010654	Ref	Final Assembly List Components 153-12	9
	0010655	Ref	Final Assembly List Components 180-12	10
1		Ref	Switch, Tilt Options:	
1	E000044	1	Switch, Tilt 153-12	
1	E000129	1	Switch, Tilt 180-12	
3	E000059	1	Switch, Battery Disconnect	
3	70001114	1	Handle	
4	E000060	2	Fuse, 125A	
5	E000061	2	Socket, Fuse	
6	E000062	2	Contactor, DC	
6	7027961	1	Tip Repair Kit - E000062 Contactor	
7	E000063	1	Horn	
10	E000102	1	Connector Housing, Female 24-Pin	
11	E000103	1	Connector Housing, Male 24-Pin	
19	E000371	2	Battery	
21	E000377	1	Switch, Emergency Stop	
22	E000481	4	Insert, Female 24-Pin Connector	
23	E000482	4	Insert, Male 24-Pin Connector	
24		Ref	Main Terminal Box (See MAIN TERMINAL BOX for Breakdown)	
29	H000016	1	Filter, Pressure	
29	70000019	1	Element, Filter	
31	H000019	1	Valve, Solenoid	D
31	7012941	1	Cartridge	
31	7010543	1	Seal Kit	
31	7012986	1	Coil	
32	H000020	1	Plate, Directional Control Valve	
33	H000021	1	Valve, Directional Control	
33	70000440	4	O-Ring, Mounting	
33	70000449	2	O-Ring, Solenoid Pole Tube	
33	70000450	1	Coil	
33	70000442	1	Nut, Coil	
33	70000443	1	O-Ring, Coil Nut	
34	H000028	1	Valve Assembly, Main (See MAIN VALVE ASSEMBLY for Breakdown)	
44	H000282	2	Motor/Pump Assembly, Electric	B
44	70000595	1	Pump	
44	70000596	1	Seal, Shaft	
44	70000597	1	Coupling, Drive	
44	70000598	1	Motor	
44	70000599	1	Brush Set	
45	H000285	1	Pump Assembly, Hand (See HAND PUMP ASSEMBLY for Breakdown)	
49	H000363	1	Manifold, Pressure Distribution	D
60	H005783	1	Gasket, Hydraulic Breather (Prior to SN 1200004758)	
83	S009001	4	Mount, Rubber	
	S015312-162-00-0	Ref	BRACKETS AND TRAYS INSTALLATION	
102	S900135	1	Tray, Battery	
106	S200418	1	Bracket, Main Valve	
107	S200413	1	Bracket, Hand Pump	

SECTION 2 - GROUND CONTROLS

ITEM	PART NUMBER	QTY	DESCRIPTION	REV
108	S009001	4	Mount, Isolator	
109	S200411	1	Bracket, Oil Filter (Not Shown)	
110	S200412	1	Bracket, Pressure Distribution Manifold	
111	4032007	4	Bolt, M10x16	
112	S200417	1	Panel, Electrical Carrier	
	S015312-162-05-0	Ref	PUMP BRACKET ASSEMBLY	
204	S200415	2	Clamp, Mounting	
205	S200414	1	Bracket, Pump	
		Ref	HYDRAULIC TANK ASSEMBLIES	
	S015312-510-00-0	Ref	Hydraulic Tank Assemblies (Prior to SN 1200014646)	C
305	H005259	1	Tank, Hydraulic	
319	H000013	1	Gauge, Hydraulic Oil Level	
320	H000241	1	Breather, Hydraulic	
321	4010508	6	Bolt M5x16	
	1001092114	Ref	Tank,Hydraulic Assy (SN 1200014646 through 1200020463)	C
401	1001092113	1	Tank, Hydraulic	
402	H000013	1	Gauge, Hydraulic Oil Level	
403	H000241	1	Breather, Hydraulic	
	S015312-600-07-0	Ref	GROUND SWITCH MOUNTING PLATE	
501	S200263	1	Plate, Ground Switch Mounting	

SECTION 2 - GROUND CONTROLS

FIGURE 2-2. MAIN VALVE ASSEMBLY



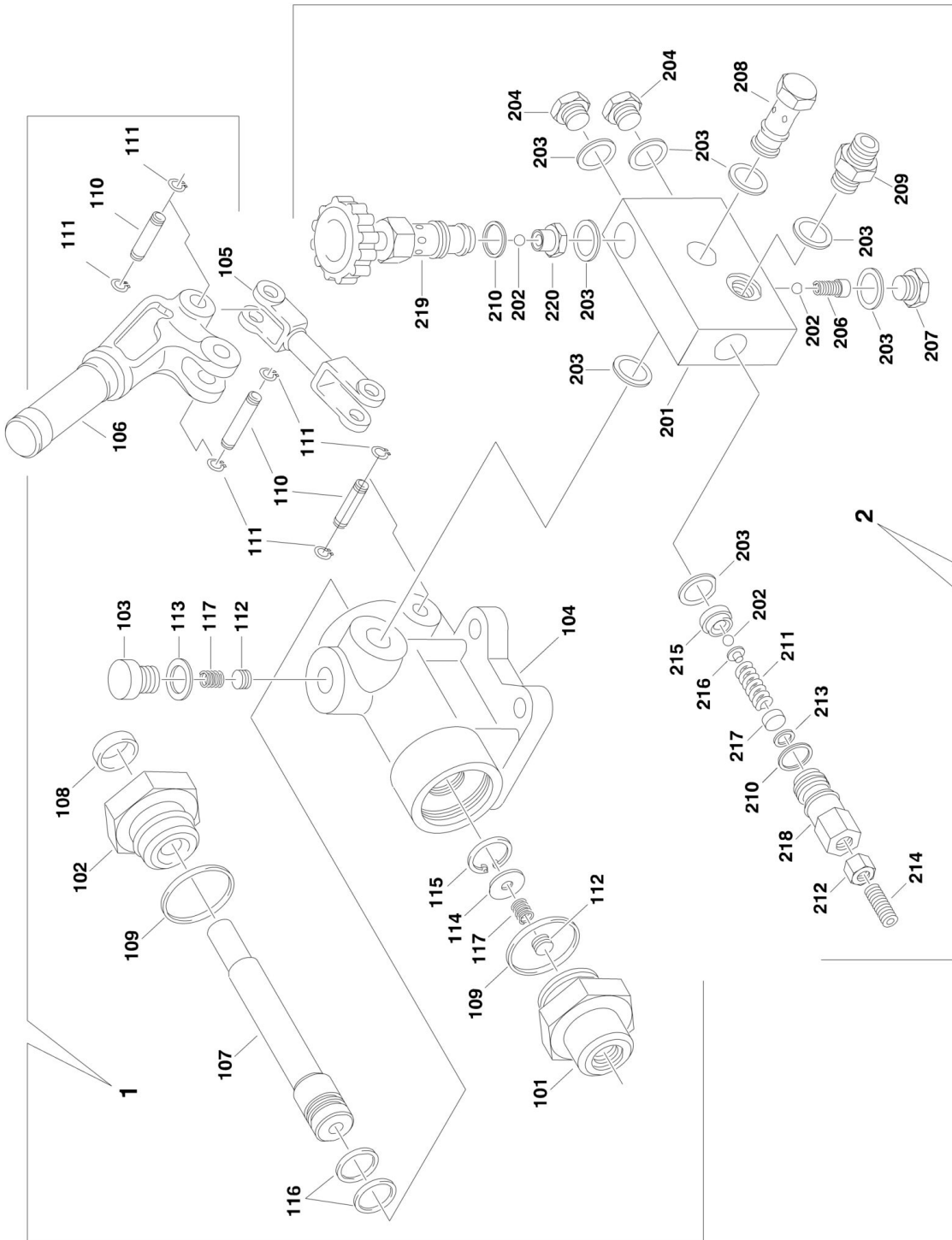
SECTION 2 - GROUND CONTROLS

FIGURE 2-2. MAIN VALVE ASSEMBLY

ITEM	PART NUMBER	QTY	DESCRIPTION	REV
	H000028	Ref	MAIN VALVE ASSEMBLY	C
2	H000205	1	Section, Pump (Left Side)	
2	8007939	1	Seal Kit - H000205 Section	
2A	8007944	1	Pilot Supply Assembly	
2B	7027912	1	Relief Assembly	
3	7028847	2	Valve Section (With Relief Valve) (Drive and Steer) (Was p/n H000188)	
3	8007935	2	Seal Kit (Was p/n H000031)	
4	H000542	1	Valve Section (Without Relief Valve) (Lift)	
4	8007935	1	Seal Kit (Was p/n H000031)	
5	H000580	1	End Plate	
5	See Item 14	1	Seal Kit	
6	H005250	4	Valve, Relief (Drive and Steer)	
7	H000389	1	Spool (Drive)	
8	8007945	1	Spool (Lift) (Was p/n H000391)	
9	H000207	1	Spool (Steer)	
10	H000191	2	Electrical Activator (On-Off) (Lift and Steer)	
10	8007954	2	Seal Kit (Was p/n H000032)	
10	7028846	8	Screw, Mounting	
10	7028849	2	DIN Connector (Black)	
11	H000206	1	Electrical Activator (Proportional High) (Drive)	
11	8007954	1	Seal Kit (Was p/n H000032)	
11	7028846	4	Screw, Mounting	
11	8007953	1	DIN Connector (White)	
12	7028893	3	Mechanical Activation Assembly (Was p/n H000187)	
12	8007894	3	Seal Kit (Was p/n H005248)	
12A	1003107	6	Nut, Seal (2 per Assembly)	
12A	8007915	6	Pin, Threaded (2 per Assembly)	
12B	0318854	12	Screw (4 per Assembly)	
12C	H005247	3	Base and Lever Assembly (1 per Assembly)	
12D	0307544	3	Screw (1 per Assembly)	
12D	0893076	3	Washer (1 Per Assembly)	
14	H000112	1	Assembly Kit (Includes Hardware and Seals for Between Valve Sections)	
14	7028848	2	Seal Kit for Between Valve Sections (Was p/n H005249) Note: One Seal Kit does both sides of section.	

SECTION 2 - GROUND CONTROLS

FIGURE 2-3. HAND PUMP ASSEMBLY



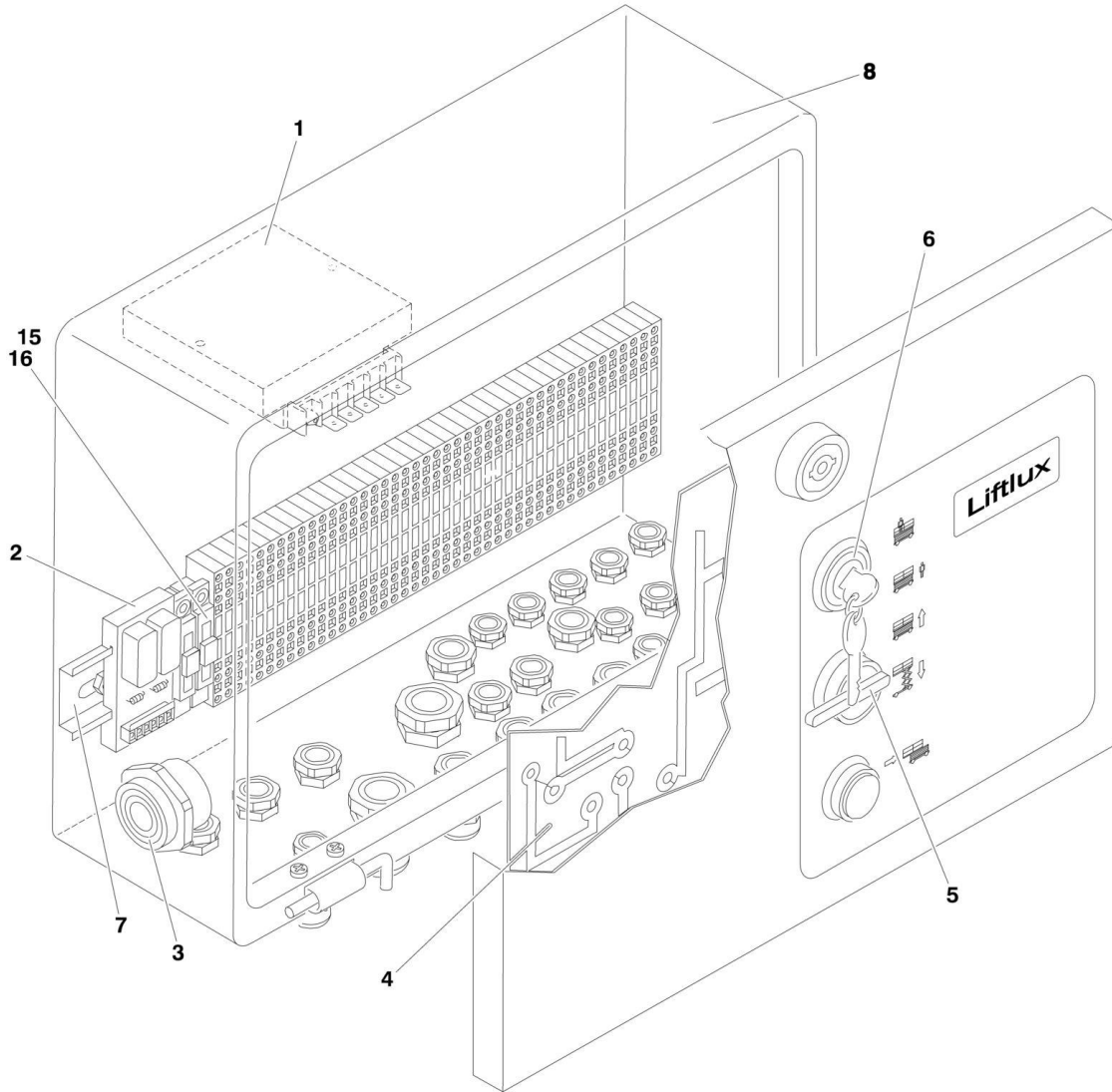
SECTION 2 - GROUND CONTROLS

FIGURE 2-3. HAND PUMP ASSEMBLY

ITEM	PART NUMBER	QTY	DESCRIPTION	REV
	H000285	Ref	HAND PUMP ASSEMBLY	D
1	70000513	1	Pump Assembly (See Items 101-117 for Breakdown)	
2	70000528	1	Valve Assembly (See Items 201-220 for breakdown)	
	70000513	Ref	PUMP ASSEMBLY	
101	70000514	1	Valve, Suction	
102	Not Available	1	Plug	
103	Not Available	1	Plug	
104	Not Available	1	Body	
105	70000515	1	Rod, Connecting	
106	70000516	1	Lever	
107	70000517	1	Piston	
108	70000518	1	Seal	
109	70000519	2	Seal	
110	70000520	2	Pin	
111	70000521	6	Ring, Retaining	
112	70000522	2	Ball	
113	70000523	1	Ring	
114	70000524	1	Washer	
115	70000525	1	Ring, Internal Retaining	
116	70000526	2	Seal	
117	70000527	2	Spring	
	70000528	Ref	VALVE ASSEMBLY	
201	Not Available	1	Body	
202	70000529	3	Ball	
203	70000530	8	Ring	
204	Not Available	2	Bolt, M8 x 8	
205	70000531	1	Spinner (Not Shown)	
206	70000532	1	Spring	
207	Not Available	1	Plug	
208	70000533	1	Screw	
209	70000534	1	Fitting, Straight	
210	70000535	2	Seal	
211	70000536	1	Spring	
212	Not Available	1	Nut, M10	
213	70000537	1	Seal	
214	Not Available	1	Setscrew	
215	70000538	1	Relief, Valve	
216	70000539	1	Pin, Ball Driving	
217	70000540	1	Plate, Seal	
218	70000541	1	Valve Body	
219	70000542	1	Knob Assembly	
220	70000543	1	Valve Body	

SECTION 2 - GROUND CONTROLS

FIGURE 2-4. MAIN TERMINAL BOX



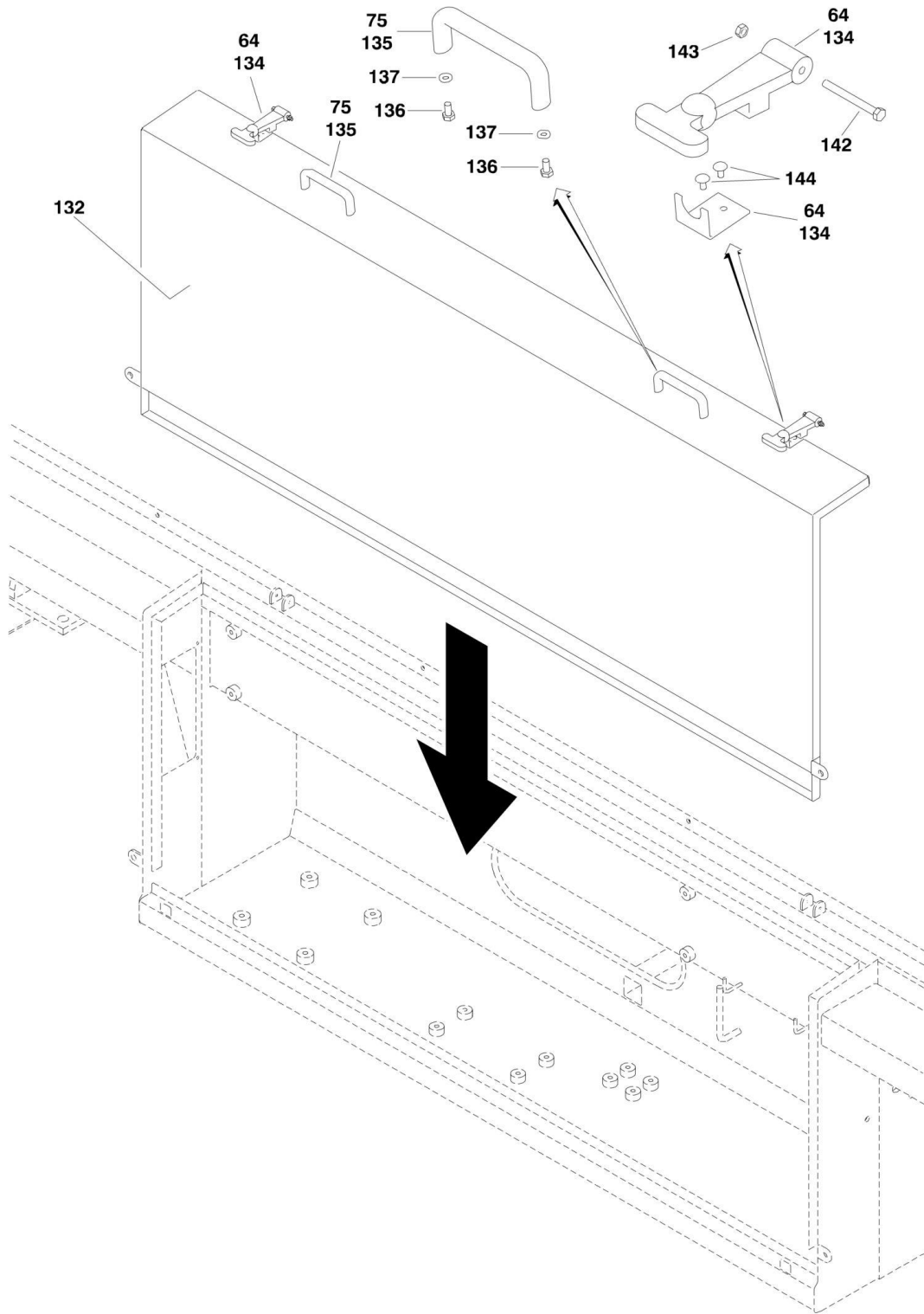
SECTION 2 - GROUND CONTROLS

FIGURE 2-4. MAIN TERMINAL BOX

ITEM	PART NUMBER	QTY	DESCRIPTION	REV
		Ref	MAIN TERMINAL BOX	
1	E000078	1	Converter, DC/DC	
2	E700100	1	Module, Load Sensing	
3	E000407	1	Alarm	
4	E000218	1	Card, Complex Control	
5	E000436	1	Switch, Lift	
6	E000378	1	Switch, Key	
7	E900059	1	Rail, DIN	
8		Ref	Housing, Control Box	
9	70000952	1	Connector (2 Pin for Nivelux Board - Not Shown)	
10	70000953	2	Connector (3 Pin for Nivelux Board - Not Shown)	
11	70000954	1	Connector (4 Pin for Nivelux Board - Not Shown)	
12	70000955	1	Connector (8 Pin for Complex Board - Not Shown)	
13	70000956	4	Connector (12 Pin for Nivelux and Complex Board - Not Shown)	
14	70003616	1	Connector (6 Pin for Nivelux and Complex Board - Not Shown)	
15	1001092405	2	Holder, Fuse	
16	1001092406	2	Fuse	

SECTION 2 - GROUND CONTROLS

FIGURE 2-5. HOODS INSTALLATION



SECTION 2 - GROUND CONTROLS

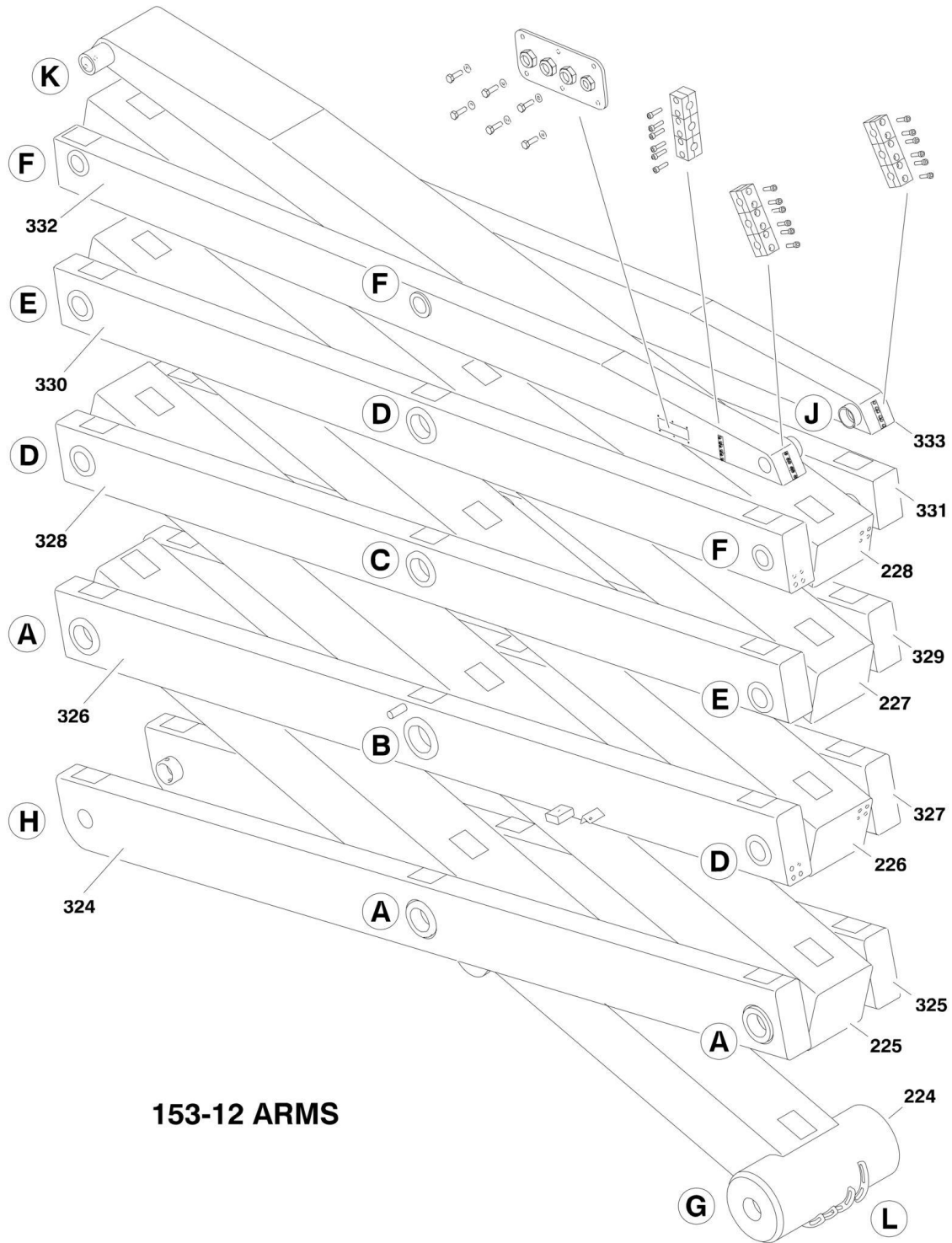
FIGURE 2-5. HOODS INSTALLATION

ITEM	PART NUMBER	QTY	DESCRIPTION	REV
		Ref	FINAL ASSEMBLY LIST COMPONENTS	
	0010654	Ref	Final Assembly List Components 153-12	9
	0010655	Ref	Final Assembly List Components 180-12	10
64	S000056	4	Strap, Hood	
75	S001676	4	Handle	
	S015312-151-00-0	Ref	HOODS INSTALLATION	2-D
132	S200419	2	Hood (was p/n S200476)	
134	S000056	4	Strap, Hood	
135	S001676	4	Handle	
136	0760606	8	Bolt, M6x12	
137	4831700	8	Lockwasher, M6	
142	0700517	4	Bolt, M5x45	
143	3290505	4	Nut, M5	
144	3820408	8	Rivet	

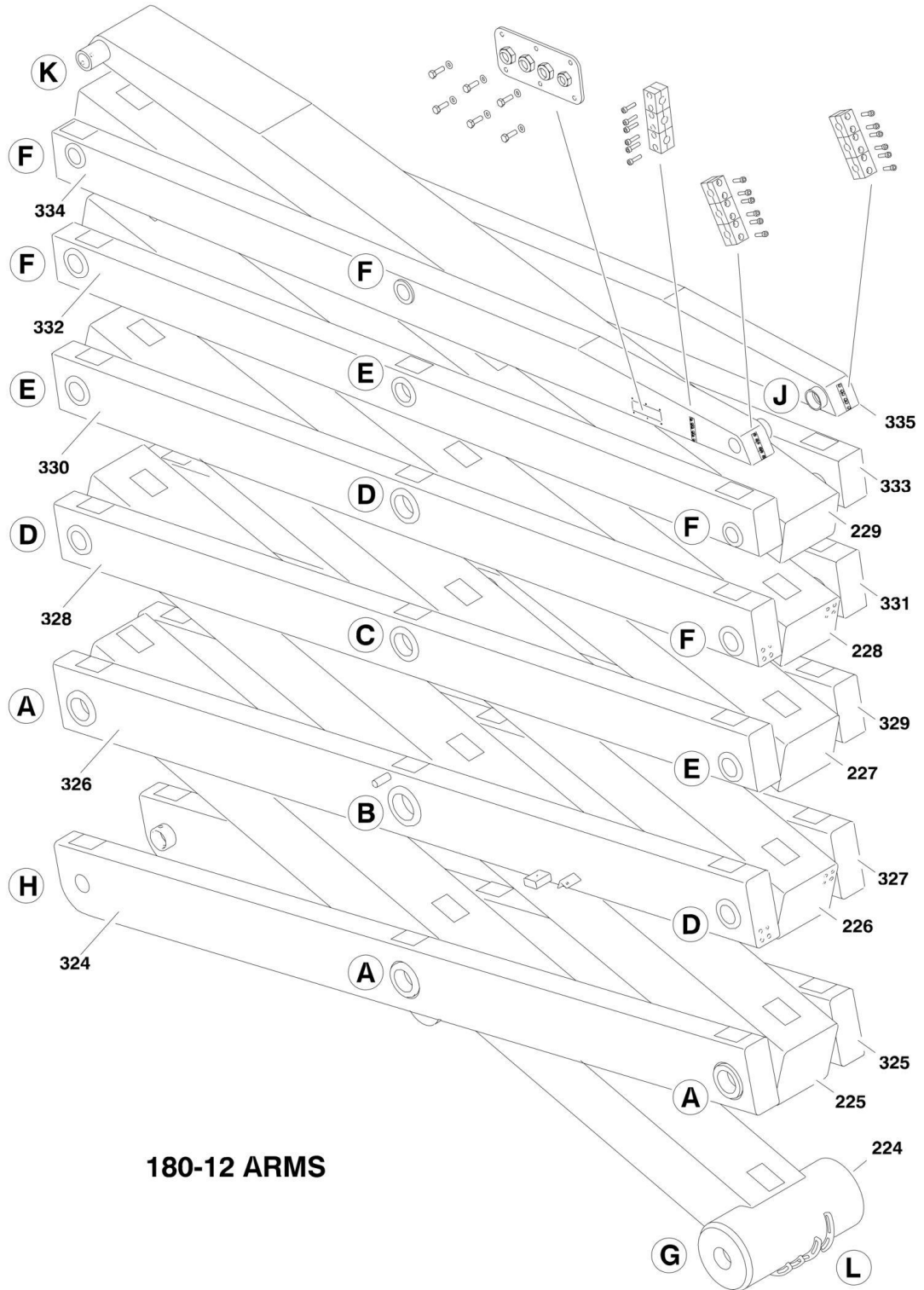
SECTION 3 - SCISSORS ARMS

SECTION 3 - SCISSORS ARMS

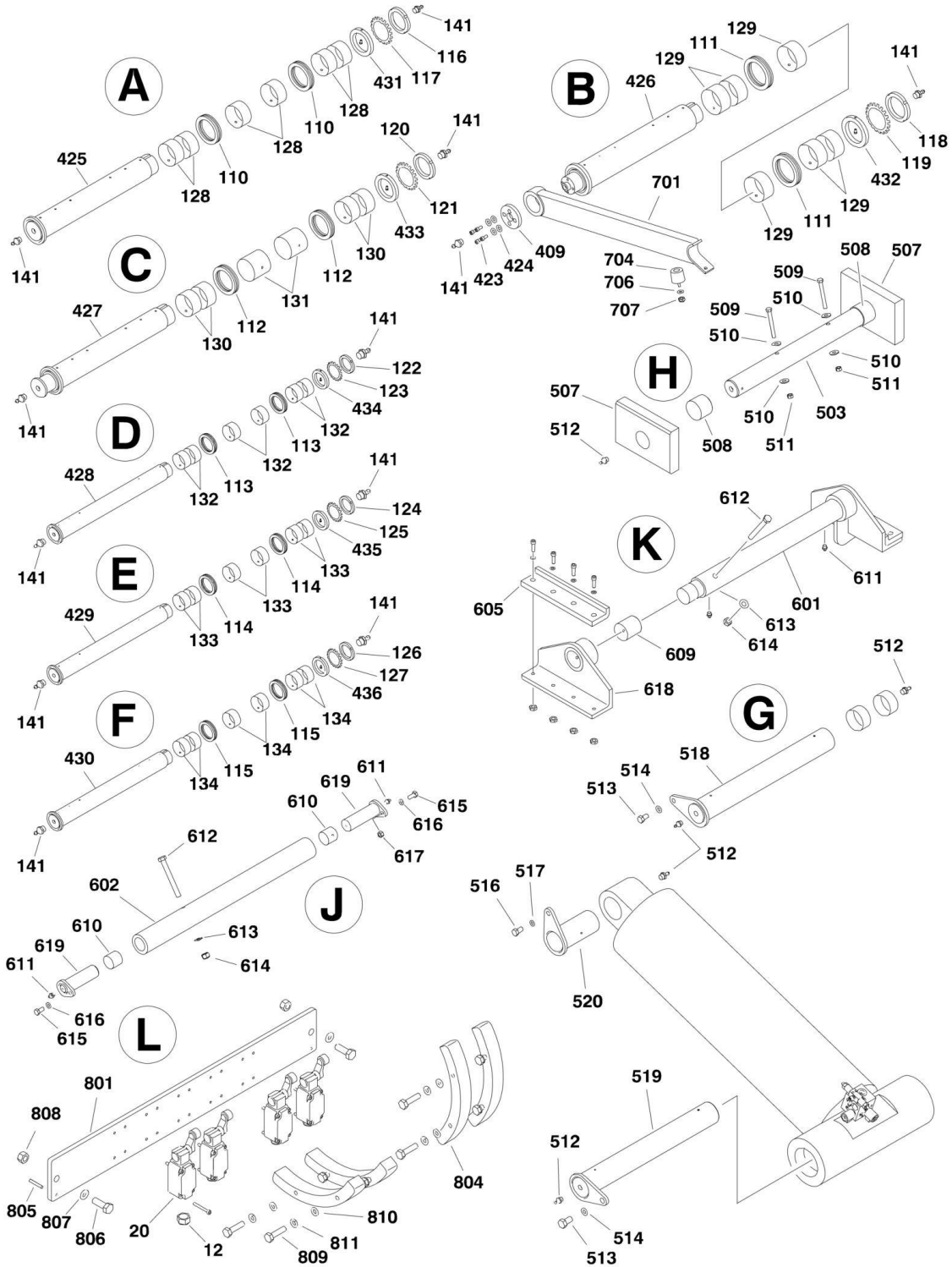
FIGURE 3-1. SCISSORS ARMS INSTALLATION



SECTION 3 - SCISSORS ARMS



SECTION 3 - SCISSORS ARMS



SECTION 3 - SCISSORS ARMS

FIGURE 3-1. SCISSORS ARMS INSTALLATION

ITEM	PART NUMBER	QTY	DESCRIPTION	REV
		Ref	FINAL ASSEMBLY LIST COMPONENTS	
	0010654	Ref	Final Assembly List Components 153-12	9
	0010655	Ref	Final Assembly List Components 180-12	10
12	E000269	3	Connector, Strain Relief	
20	E000376	3	Switch, Limit	
		Ref	SCISSOR ARMS INSTALLATION	
	S015312-200-00-0	Ref	Scissor Arms Installation 153-12	1-A
	S018012-200-00-0	Ref	Scissor Arms Installation 180-12	1
110	S001802	6	Bearing, Ball Thrust	
111	S001491	2	Bearing, Ball Thrust	
112	S000124	2	Bearing, Ball Thrust	
113	S001803	6	Bearing, Ball Thrust	
114	S001804	Ref	Bearing, Ball Thrust	
114	S001804	4	Bearing, Ball Thrust 153-12	
114	S001804	6	Bearing, Ball Thrust 180-12	
115	S001805	Ref	Bearing, Ball Thrust	
115	S001805	6	Bearing, Ball Thrust 153-12	
115	S001805	10	Bearing, Ball Thrust 180-12	
116	S001806	3	Nut, KM 15	
117	S001807	3	Washer, MB 15 Retaining	
118	S001241	1	Nut, KM 20	
119	S001238	1	Washer, MB 20 Retaining	
120	S001240	1	Nut, KM 16	
121	S000234	1	Washer, MB 16 Retaining	
122	S001808	3	Nut, KM 14	
123	S001809	3	Washer, MB 14 Retaining	
124	S000191	Ref	Nut, KM 12	
124	S000191	2	Nut, KM 12 153-12	
124	S000191	3	Nut, KM 12 180-12	
125	S000233	Ref	Washer, MB 12 Retaining	
125	S000233	2	Washer, MB 12 Retaining 153-12	
125	S000233	3	Washer, MB 12 Retaining 180-12	
126	S000192	Ref	Nut, KM 10	
126	S000192	3	Nut, KM 10 153-12	
126	S000192	5	Nut, KM 10 180-12	
127	S000193	Ref	Washer, MB 10 Retaining	
127	S000193	3	Washer, MB 10 Retaining 153-12	
127	S000193	5	Washer, MB 10 Retaining 180-12	
128	S001810	18	Bushing	
129	S001496	6	Bushing	
130	S000118	4	Bushing	
131	S000182	2	Bushing	
132	S000120	18	Bushing	
133	S000083	Ref	Bushing	
133	S000083	12	Bushing 153-12	
133	S000083	18	Bushing 180-12	
134	S000178	Ref	Bushing	
134	S000178	18	Bushing 153-12	
134	S000178	30	Bushing 180-12	
141	S000141	AR	Fitting, Grease	

SECTION 3 - SCISSORS ARMS

ITEM	PART NUMBER	QTY	DESCRIPTION	REV
		Ref	INNER SCISSOR ARMS	
	S015312-210-00-0	Ref	Inner Scissor Arms 153-12	2-A
	S018012-210-00-0	Ref	Inner Scissor Arms 180-12	1
224	S200151	1	Arm, #1 Center Scissor	
225	S200154	1	Arm, #2 Center Scissor	
226	S200157	1	Arm, #3 Center Scissor	
227	S200160	1	Arm, #4 Center Scissor	
228		Ref	Arm, #5 Center Scissor Options:	
228	S200163	1	Arm, #5 Center Scissor 153-12	
228	S900313	1	Arm, #5 Center Scissor 180-12	
229	S200275	1	Arm, #6 Center Scissor (180-12 Only)	
		Ref	OUTER SCISSOR ARMS	
	S015312-220-00-0	Ref	Outer Scissor Arms 153-12	2-B
	S018012-220-00-0	Ref	Outer Scissor Arms 180-12	2-B
324	S200152	1	Arm, #1 Right Scissor	
325	S200153	1	Arm, #1 Left Scissor	
326	S200155	1	Arm, #2 Right Scissor	
327	S200156	1	Arm, #2 Left Scissor	
328	S200158	1	Arm, #3 Right Scissor	
329	S200159	1	Arm, #3 Left Scissor	
330	S200161	1	Arm, #4 Right Scissor	
331	S200162	1	Arm, #4 Left Scissor	
332		Ref	Arm, #5 Right Scissor	
332	S200164	1	Arm, #5 Right Scissor 153-12	
332	S900314	1	Arm, #5 Right Scissor 180-12	
333		Ref	Arm, #5 Left Scissor	
333	S200165	1	Arm, #5 Right Scissor 153-12	
333	S900315	1	Arm, #5 Right Scissor 180-12	
334	S900317	1	Arm, #6 Right Scissor (180-12 Only)	
335	S200165	1	Arm, #6 Left Scissor (180-12 Only)	
		Ref	SCISSOR ARMS PIN INSTALLATION	
	S015312-230-00-0	Ref	Scissor Arms Pin Installation 153-12	B
	S018012-230-00-0	Ref	Scissor Arms Pin Installation 180-12	2-A
409	S200175	1	Retainer, Prop Arm	
423	0760812	4	Bolt, M8x25	
424	4811900	4	Washer, M8	
425	S007111	3	Pin, 85 mm	
426	S007112	1	Pin, 110 mm	
427	S007114	1	Pin, 90 mm	
428	S007113	3	Pin, 80 mm	
429	S007115	Ref	Pin, 70 mm	
429	S007115	2	Pin, 70 mm 153-12	
429	S007115	3	Pin, 70 mm 180-12	
430	S007119	Ref	Pin, 60 mm	
430	S007119	3	Pin, 60 mm 153-12	
430	S007119	5	Pin, 60 mm 180-12	
431	S200166	3	Washer and Pin	
432	S200171	1	Washer and Pin	
433	S200170	1	Washer and Pin	
434	S200168	3	Washer and Pin	
435	S200167	Ref	Washer and Pin	

SECTION 3 - SCISSORS ARMS

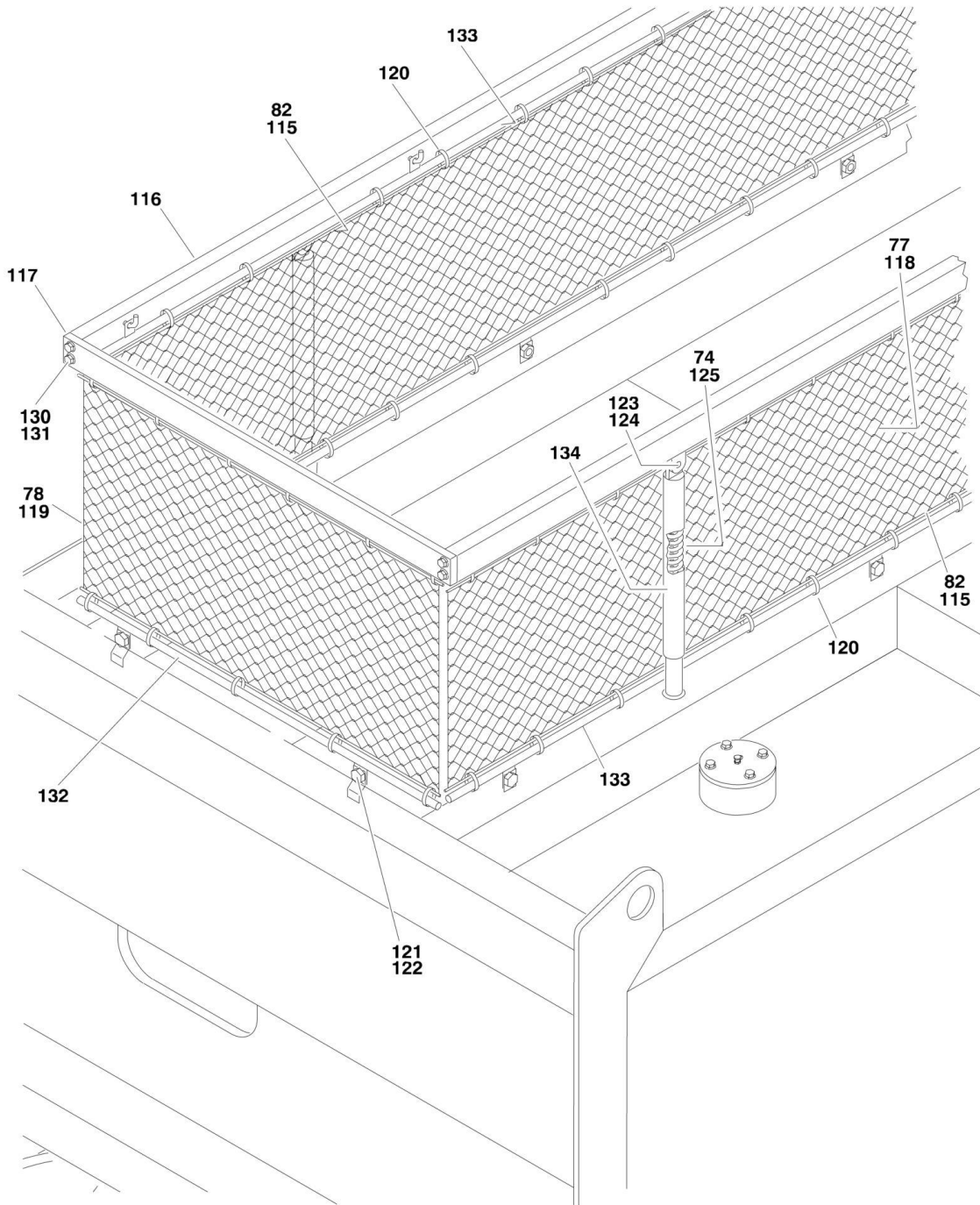
ITEM	PART NUMBER	QTY	DESCRIPTION	REV
435	S200167	2	Washer and Pin 153-12	
435	S200167	3	Washer and Pin 180-12	
436	S200169	Ref	Washer and Pin	
436	S200169	2	Washer and Pin 153-12	
436	S200169	5	Washer and Pin 180-12	
	S015312-240-00-1	Ref	SCISSOR ARMS TO FRAME INSTALLATION	2-B
503	S007029	1	Pin, 70 mm	
507	S004034	2	Block, Wear	
508	S200176	2	Spacer	
509	0701628	2	Bolt, M16x110	
510	4812300	4	Washer, M16	
511	3291605	2	Nut, M16	
512	S000141	7	Fitting, Grease	
513	0762015	2	Bolt, M20x35	
514	4812500	2	Washer, M20	
516	0761215	1	Bolt, M12x35	
517	4812100	1	Washer, M12	
518	S007026	1	Pin, 85 mm	
519	S007027	1	Pin, 85 mm	
520	S007028	1	Pin, 85 mm	
	S015312-240-00-2	Ref	SCISSOR ARMS TO PLATFORM INSTALLATION	2-B
601	S007030	1	Pin, 60 mm	
602	S007031	1	Pin, 60 mm	
605	S200174	2	Pad, Wear	
609	S000140	2	Bushing	
610	S000139	2	Bushing	
611	S000141	4	Fitting, Grease	
612	0761229	2	Bolt, M12x120	
613	4812100	2	Washer, M12	
614	3291205	2	Nut, M12	
615	0761029	2	Bolt, M10x120	
616	4812000	4	Washer, M10	
617	3291005	2	Nut, M10	
618	S200173	2	Slide, Platform	
619	S007033	2	Pin, 35 mm	
	S015312-250-00-0	Ref	SAFETY PROP ASSEMBLY	
701	S200172	1	Prop, Safety	
704	S001594	1	Bumper	
706	4811900	1	Washer, M8	
707	3290805	1	Nut, M8	
708	0760812	1	Bolt, M8x25	
	S015312-260-00-0	Ref	SCISSOR PROTECTION INSTALLATION	A
801	S200420	1	Panel, Limit Switch Mounting	
804	S200134	4	Cam	
805	3371708	2	Pin Roll	
806	0761216	2	Bolt, M12x40	
807	4812100	2	Washer, M12	
808	3291205	2	Nut, M12	
809	0761014	8	Bolt, M10x30	
810	4812000	8	Washer, M10	
811	4832000	8	Lockwasher, M10	

SECTION 3 - SCISSORS ARMS

ITEM	PART NUMBER	QTY	DESCRIPTION	REV
		Ref	Arm-Set Assembly Options:	
	S900151	1	Arm-Set Assembly 153-12	
	S900175	1	Arm-Set Assembly 180-12	

SECTION 3 - SCISSORS ARMS

FIGURE 3-2. SCISSORS PROTECTION INSTALLATION



SECTION 3 - SCISSORS ARMS

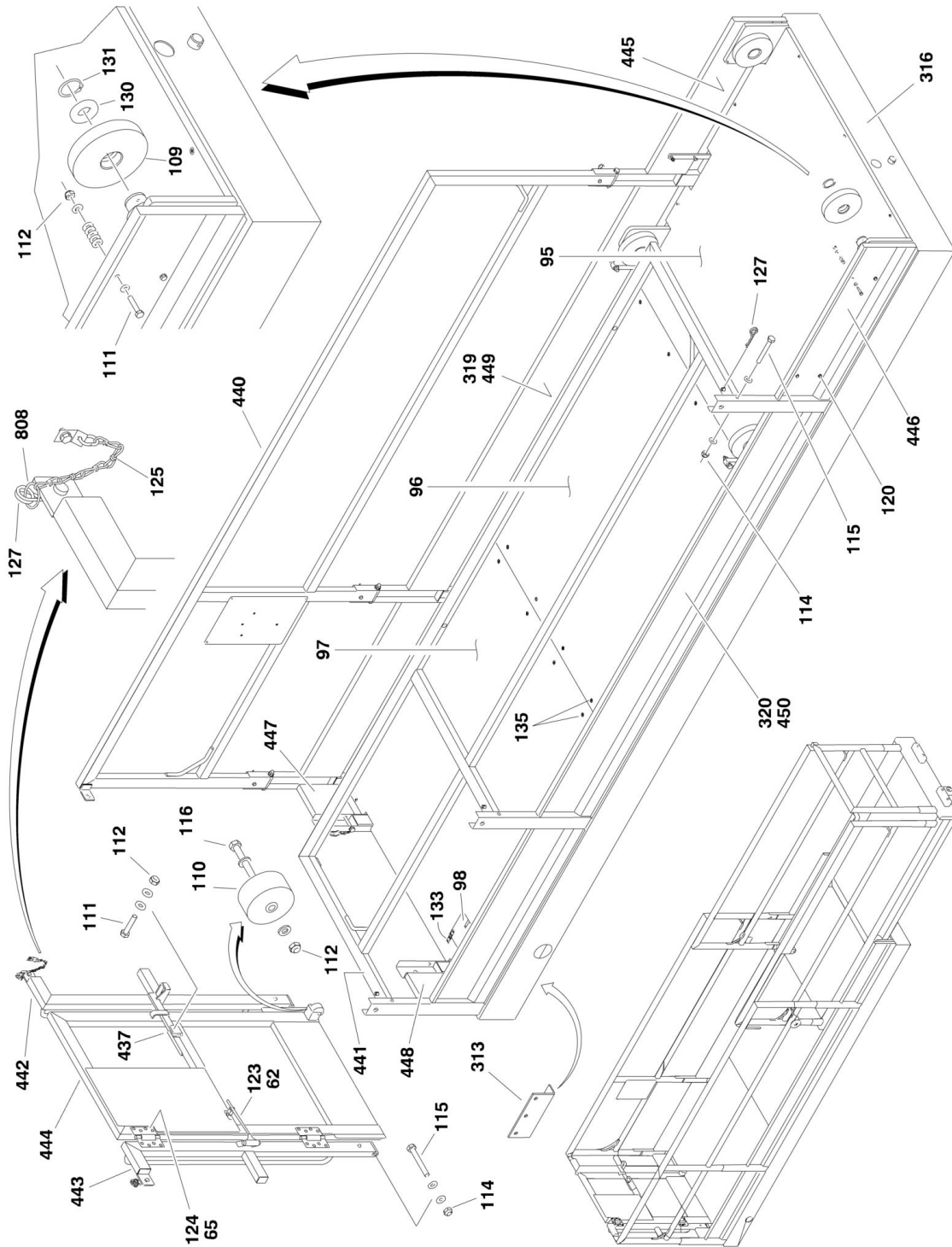
FIGURE 3-2. SCISSORS PROTECTION INSTALLATION

ITEM	PART NUMBER	QTY	DESCRIPTION	REV
		Ref	FINAL ASSEMBLY LIST COMPONENTS	
	0010654	Ref	Final Assembly List Components 153-12	9
	0010655	Ref	Final Assembly List Components 180-12	10
74	S001596	12	Spring, Compression	
77	S001833	2	Screen, Long Safety	
78	S001834	2	Screen, Short Safety	
82	S005042	8	Spring Steel (Cut To Length)	
	S015312-170-00-0	Ref	SCISSOR PROTECTION INSTALLATION	2-B
115	S005042	8	Spring Steel (Cut To Length)	
116	S900137	2	Tube, Long Upper	
117	S900138	2	Tube, Short Upper	
118	S001833	2	Screen, Long Safety	
119	S001834	2	Screen, Short Safety	
120	4240032	50	Tie, Cable (Not Shown)	
121	0760810	16	Bolt, M8x20	
122	3290805	16	Nut, M8	
123	0761015	4	Bolt, M10x35	
124	3291005	4	Nut, M10	
125	S001596	12	Spring, Compression	
130	0761010	8	Bolt, M10x20	
131	4832000	8	Lockwasher, M10	
132	S200424	4	Round Tube (Short)	
133	S200422	4	Round Tube (Long)	
134	S200421	4	Column, Upper	

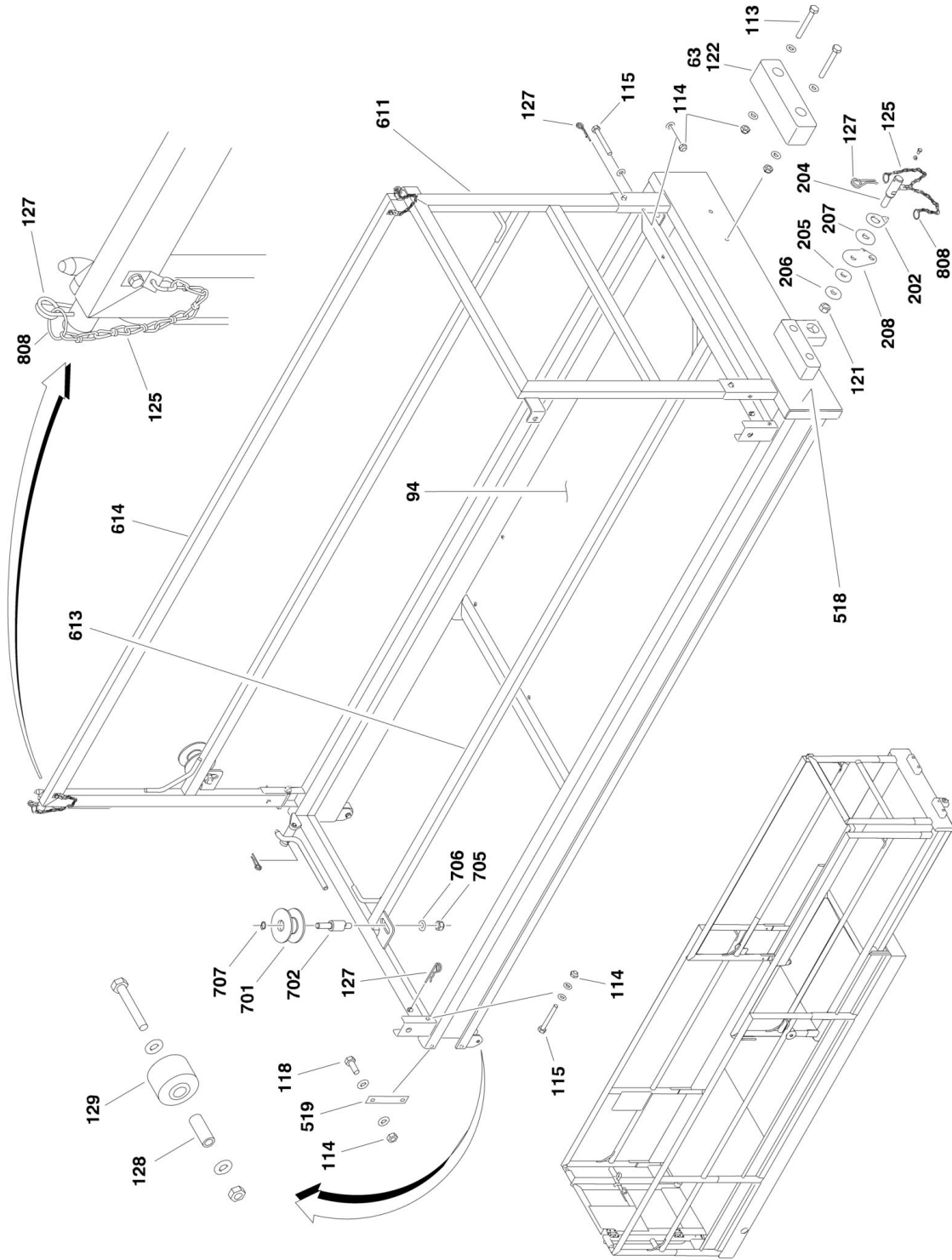
SECTION 4 - PLATFORM

SECTION 4 - PLATFORM

FIGURE 4-1. PLATFORM AND ACCESSORIES INSTALLATION



SECTION 4 - PLATFORM



SECTION 4 - PLATFORM

FIGURE 4-1. PLATFORM AND ACCESSORIES INSTALLATION

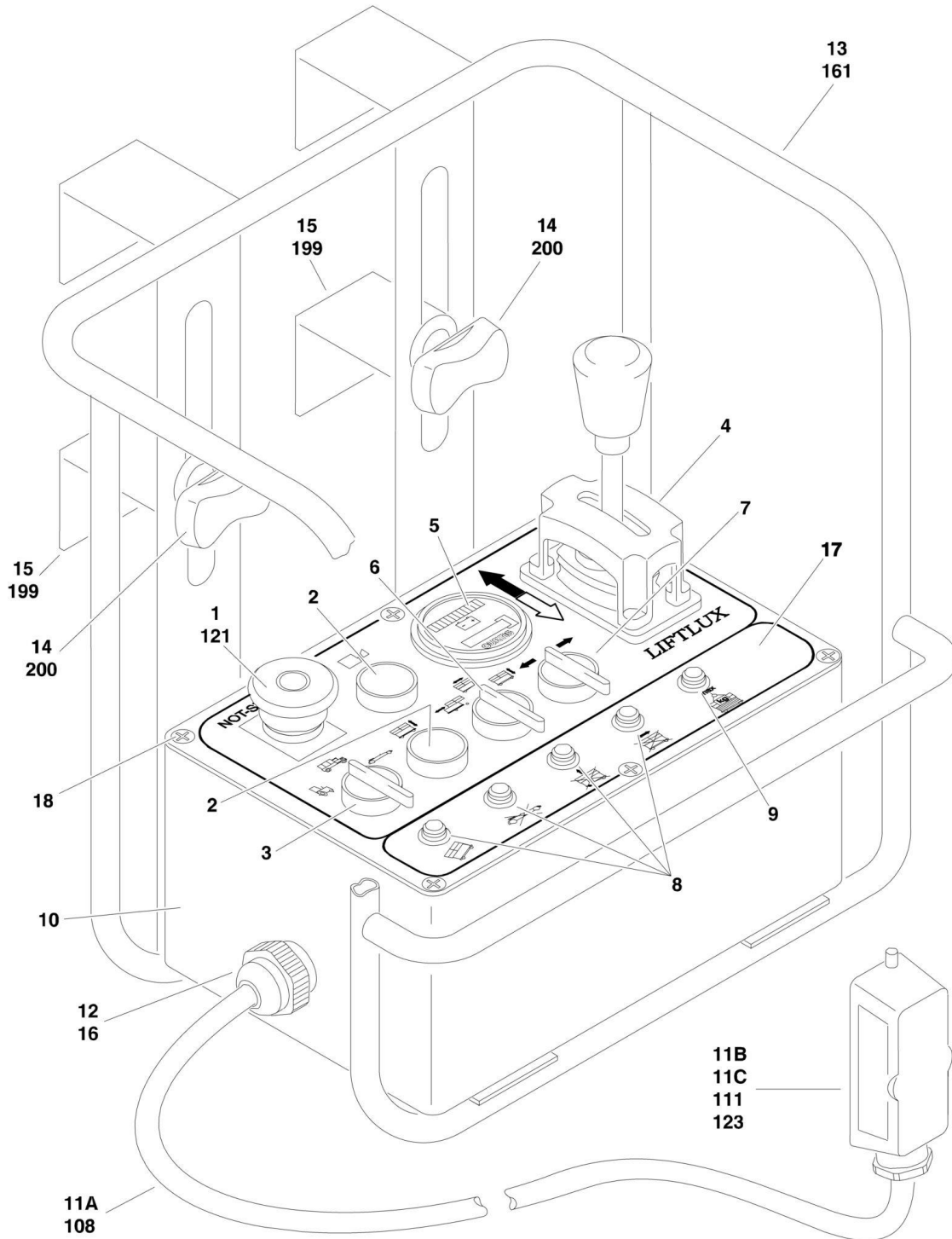
ITEM	PART NUMBER	QTY	DESCRIPTION	REV
		Ref	FINAL ASSEMBLY LIST COMPONENTS	
	0010654	Ref	Final Assembly List Components 153-12	9
	0010655	Ref	Final Assembly List Components 180-12	10
62	S000030	1	Closer, Gate	
63	S000055	2	Bumper	
65	S000237	2	Hinge	
94	S900047	1	Floor, Extension Deck	
95	S900048	1	Floor, Main Deck Rear	
96	S900049	1	Floor, Main Deck Center	
97	S900050	1	Floor, Main Deck Front	
98	S900051	1	Door, Connector Compartment	
	S015312-300-00-0	Ref	PLATFORM ASSEMBLY	B
109	S005049	4	Roller	
110	S000031	1	Roller, Door	
111	0700614	4	Bolt, M6x30	
112	3290605	9	Nut, M6	
113	0701024	4	Bolt, M10x80	
114	3291005	32	Nut, M10	
115	0701224	14	Bolt, M12x80	
116	0700619	1	Bolt, M6x55	
117	0701014	4	Bolt, M10x30 (Not Shown)	
118	0701016	4	Bolt, M10x40	
119	0701219	4	Bolt, M12x55 (Not Shown)	
120	0700621	4	Bolt, M6x65	
121	3291605	1	Nut, M16	
122	S000055	2	Bumper	
123	S000030	1	Closer, Gate	
124		Ref	Hinge, Gate	
125	S001443	22	Chain	
126	S000510	2	Pin, 4mm Cotter (Not Shown)	
127	S000145	20	Pin, 3mm Cotter	
128	S900142	2	Spacer	
129	S900143	2	Roller	
130	S000069	4	Washer	
131	3760491	4	Ring, Snap (Was p/n S003950)	
132	S000141	4	Fitting, Grease	
133	S000237	2	Hinge	
135	S001445	AR	Screw, Self-Tapping	
	S015312-300-40-0	Ref	TRANSPORT HOOK INSTALLATION	
202	S900146	1	Plate, Hook Chain	
204	S900147	1	Pin, Deck Lock	
205	S900148	1	Washer	
206	S900149	1	Washer	
207	S900150	1	Washer	
208	S900145	1	Plate, Extension Deck Lock	
	S015312-310-00-0	Ref	MAIN PLATFORM DECK INSTALLATION	B
313	S900186	2	Bracket, Platform Slide	
316	S000439	1	Weldment, Main Platform	
319	S900216	1	Kick Plate, Long RH	
320	S900217	1	Kick Plate, Long LH	

SECTION 4 - PLATFORM

ITEM	PART NUMBER	QTY	DESCRIPTION	REV
	S015312-311-00-0	Ref	MAIN PLATFORM RAILING INSTALLATION	D
437	S200238	1	Latch	
440	S200443	1	Rail, RH	
441	S200442	1	Rail, LH	
442	S200447	1	Rail, RF	
443	S200448	1	Rail, LF	
444	S200224	1	Gate	
445	S200445	1	Kick Plate, RH Bolted	
446	S200444	1	Kick Plate, LH Bolted	
447	S200440	1	Kick Plate, RF	
448	S200441	1	Kick Plate, LF	
449	S900216	1	Kick Plate, RH	
450	S900217	1	Kick Plate, LH	
	S015312-320-00-0	Ref	EXTENSION PLATFORM DECK INSTALLATION	0-C
518	S200449	1	Weldment, Extension Platform	
519	S900144	2	Plate, Stop	
	S015312-321-00-0	Ref	EXTENSION PLATFORM RAILING INSTALLATION	
611	S200452	1	Rail, Rear	
613	S200450	1	Rail, LH	
614	S200451	1	Rail, RH	
	S015312-321-12-0	Ref	EXTENSION PLATFORM GUIDE ROLLER INSTALLATION	0-A
701	S200231	2	Roller	
702	S200230	2	Pin	
705	3291605	2	Nut, M16	
706	4812300	2	Washer, M16	
707	3760518	2	Ring, Snap	
		Ref	MISCELLANEOUS PARTS LIST COMPONENTS	
	X15312L	Ref	Miscellaneous Parts List Components 153-12	3
	X18012L	Ref	Miscellaneous Parts List Components 180-12	3
808	S001677		Ring	

SECTION 4 - PLATFORM

FIGURE 4-2. CONSOLE BOX INSTALLATION



SECTION 4 - PLATFORM

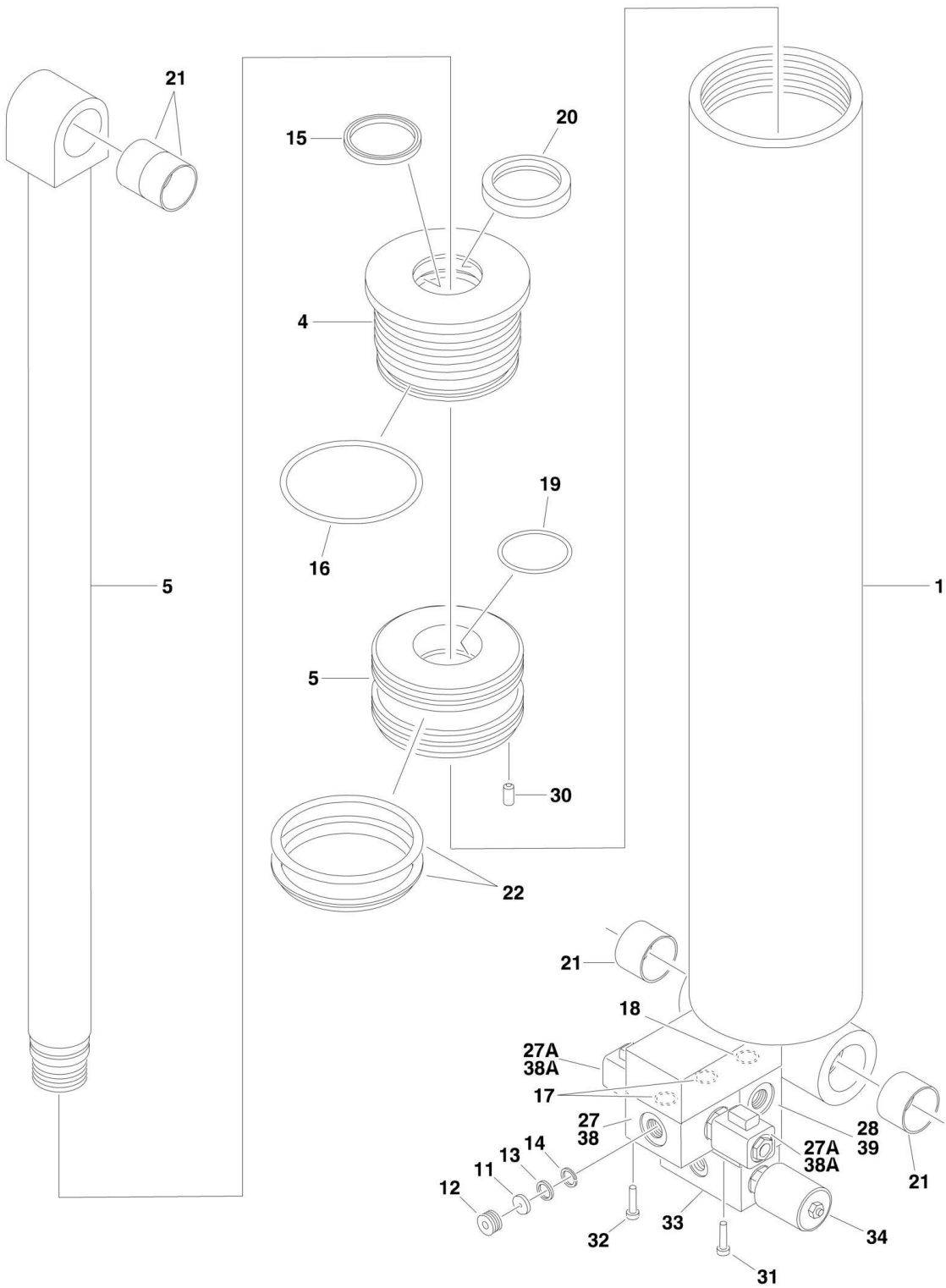
FIGURE 4-2. CONSOLE BOX INSTALLATION

ITEM	PART NUMBER	QTY	DESCRIPTION	REV
		Ref	CONSOLE BOX INSTALLATION	
1	E000377	1	Switch, Emergency Stop	
2	E000412	2	Switch, Push Button	
3	E000511	1	Switch, Drive Speed	
4	E000051	1	Joystick	
5	E000504	1	Gauge, Hourmeter/Battery	
6	E000439	1	Switch, 3 Step (Drive/Lift/Extend)	
7	E000436	1	Switch,Steering	
8	E000419	4	LED, Red	
9	E000420	1	LED, Red Flashing	
10	E001328	1	Housing, Console Box	
11	Not Available	1	Cable Assembly, Control	
11A	E000083	AR	Cable (25 Wires)	
11B	E000103	1	Connector Housing, Male 24-Pin	
11C	E000482	1	Connector Insert, Male 24-Pin	
12	E000304	1	Gland, Cable	
13	S000009	1	Bracket, Console Box	
14	2560141	2	Screw, Thumb (SN 1200003616 through 1200020463)	
15	0181847	2	Clamp, Console Bracket (SN 1200003616 through 1200020463)	
16	E000432	1	Nut, Brass	
17	E001330		Lid, Console Box	
18	1001109990	6	Screw	
		Ref	FINAL ASSEMBLY LIST COMPONENTS	
	0010654	Ref	Final Assembly List Components 153-12	9
	0010655	Ref	Final Assembly List Components 180-12	10
108	E000083	AR	Cable (25 Wires)	
111	E000103		Connector Housing, Male 24-Pin	
121	E000377	1	Switch, Emergency Stop	
123	E000482		Connector Insert, Male 24-Pin	
161	S000009	1	Bracket, Console Panel	
199	0181847	2	Clamp, Console Bracket (SN 1200003616 through 1200020463)	
200	2560141	2	Screw, Thumb (SN 1200003616 through 1200020463)	

SECTION 5 - CYLINDER

SECTION 5 - CYLINDER

FIGURE 5-1. LIFTING CYLINDER ASSEMBLY



SECTION 5 - CYLINDER

FIGURE 5-1. LIFTING CYLINDER ASSEMBLY

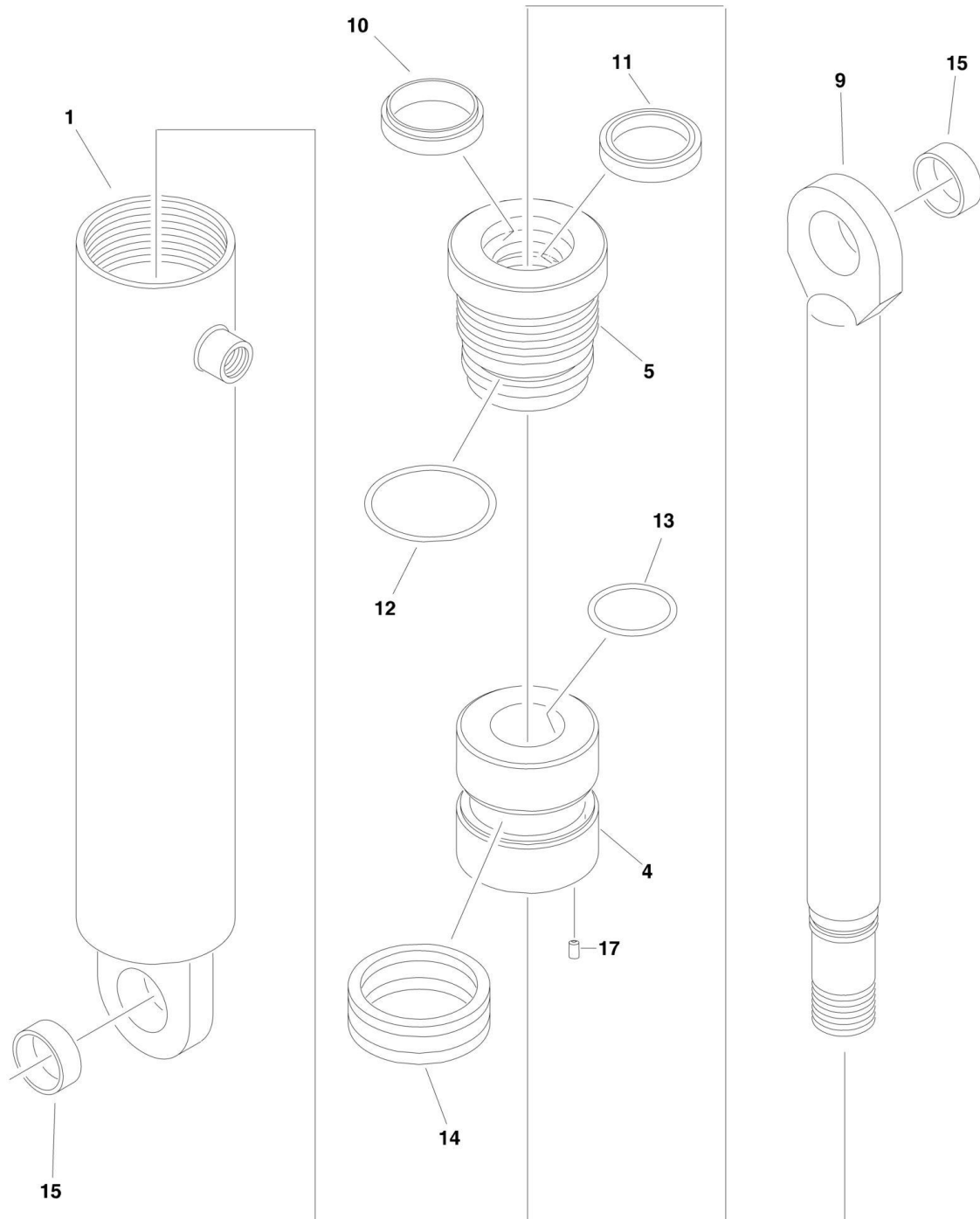
ITEM	PART NUMBER	QTY	DESCRIPTION	REV
	H000684	Ref	LIFT CYLINDER ASSEMBLY	
1	S200426	1	Barrel Weldment	
4	S200185	1	Head	
5	S200184	1	Piston	
7	S200182	1	Rod Weldment	
11	70000185	1	Collar, Throttle (see note)	
12	70000186	1	Screw, Throttle (see note)	
13	70000187	1	Ring, Throttle (see note)	
14	Not Available	1	Ring, Snap	
15	H003090	1	Seal, Rod	
16	H003113	1	O-Ring	
17	70000188	2	O-Ring	
18	70000189	1	O-Ring	
19	H003109	1	O-Ring	
20	H003084	1	Wiper	
21	S001810	4	Bushing	
22	H000530	1	Seal Set, Piston	
27	H005243	1	Valve, Load Retaining	
27A	H000071	2	Valve, Holding	
27A		Ref	Coil Options:	
27A	7012986	AR	Hydraforce Version	
27A	Not Available		Oil Controls SPA Version	
27A		Ref	Seal Kit Options:	
27A	7012998	AR	Hydraforce Version	
27A	Not Available		Oil Controls SPA Version	
28	H005244	1	Block, Check Valve	
30	S200910	1	Setscrew	
31	4031713	4	Screw	
32	4031912	4	Screw	
		Ref	FINAL ASSEMBLY LIST COMPONENTS	
	0010654	Ref	Final Assembly List Components 153-12	9
	0010655	Ref	Final Assembly List Components 180-12	10
33	H705721	1	Block, Hydraulic	
34	H705722	2	Sensor, Pressure	
35	H705723	2	Harness, Pressure Sensor (Not Shown)	
36	H705724	2	Cap, Pressure Sensor (Not Shown)	
38	H005243	1	Valve Assembly, Load Retaining	C
38A	H000071	2	Valve, Holding	
38A		Ref	Coil Options:	
38A	7012986	AR	Hydraforce Version	
38A	Not Available		Oil Controls SPA Version	
38A		Ref	Seal Kit Options:	
38A	7012998	AR	Hydraforce Version	
38A	Not Available		Oil Controls SPA Version	
39	H005244	1	Block Assembly, Check Valve	B
39	H000271	1	Piston	
39	7012955	1	Cartridge (was p/n H000270)	
39	7012967	1	Seal Kit (Note: No seal kit available. Purchase individual seals.)	

SECTION 5 - CYLINDER

ITEM	PART NUMBER	QTY	DESCRIPTION	REV
	Note	Ref	Note: S200298 Throttle Kit no longer available. Order individual pieces.	

SECTION 5 - CYLINDER

FIGURE 5-2. STEERING CYLINDER ASSEMBLY (Prior to SN 1200009628)



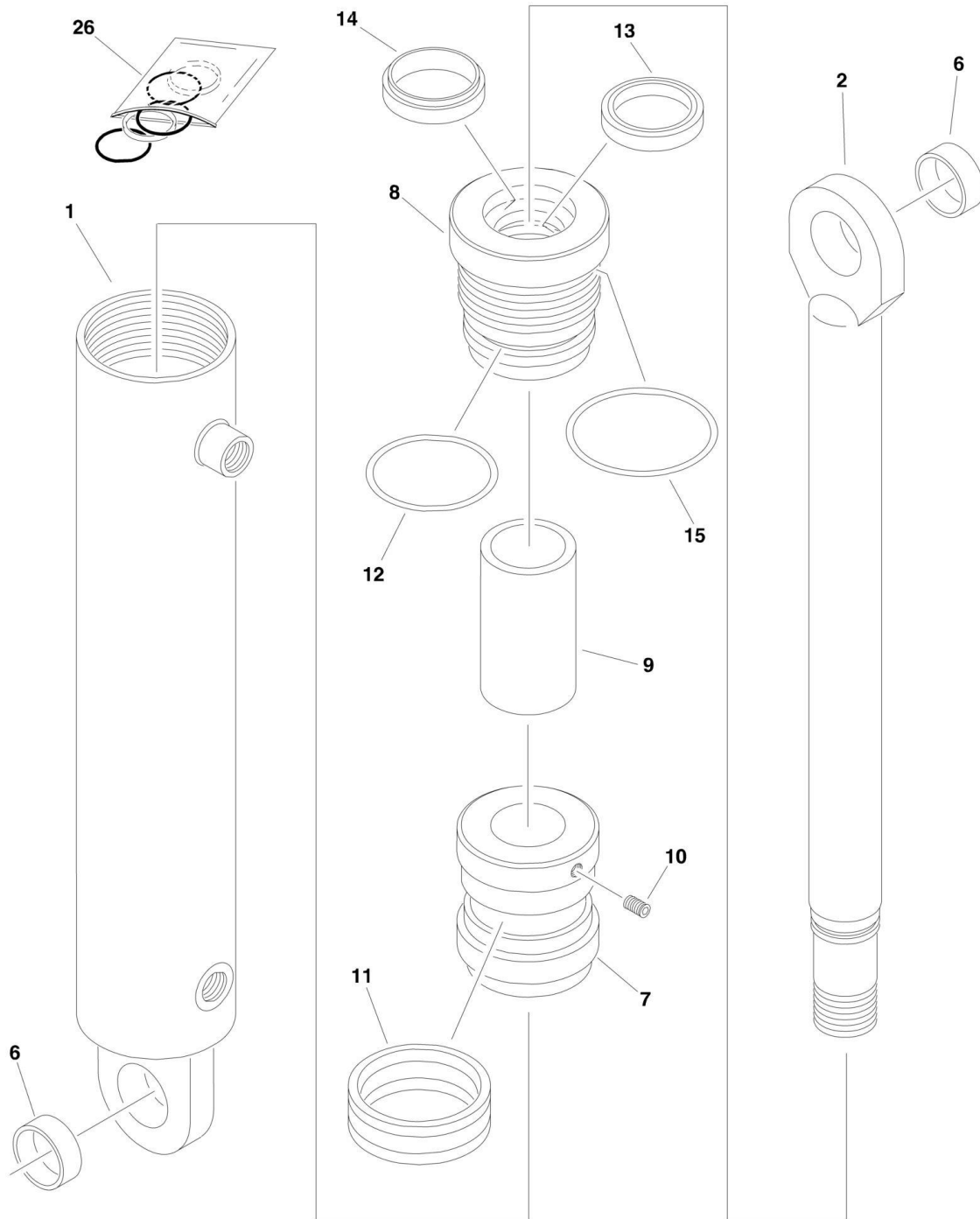
SECTION 5 - CYLINDER

FIGURE 5-2. STEERING CYLINDER ASSEMBLY (Prior to SN 1200009628)

ITEM	PART NUMBER	QTY	DESCRIPTION	REV
	H000683	Ref	STEERING CYLINDER ASSEMBLY	B
1	S200435	1	Barrel Weldment	
4	S200436	1	Piston	
5	S200437	1	Head	
9	S200434	1	Rod Weldment	
10	H003064	1	Wiper	
11	H003066	1	Seal, Rod	
12	H003080	1	O-Ring	
13	H003075	1	O-Ring	
14	H003068	1	Seal, Piston	
15	S000263	2	Bushing	
17	Not Available	1	Setscrew	
		Ref	Note: No seal kit available. Purchase individual seals.	

SECTION 5 - CYLINDER

FIGURE 5-3. STEERING CYLINDER ASSEMBLY (SN 120009628 through 1200020463)



SECTION 5 - CYLINDER

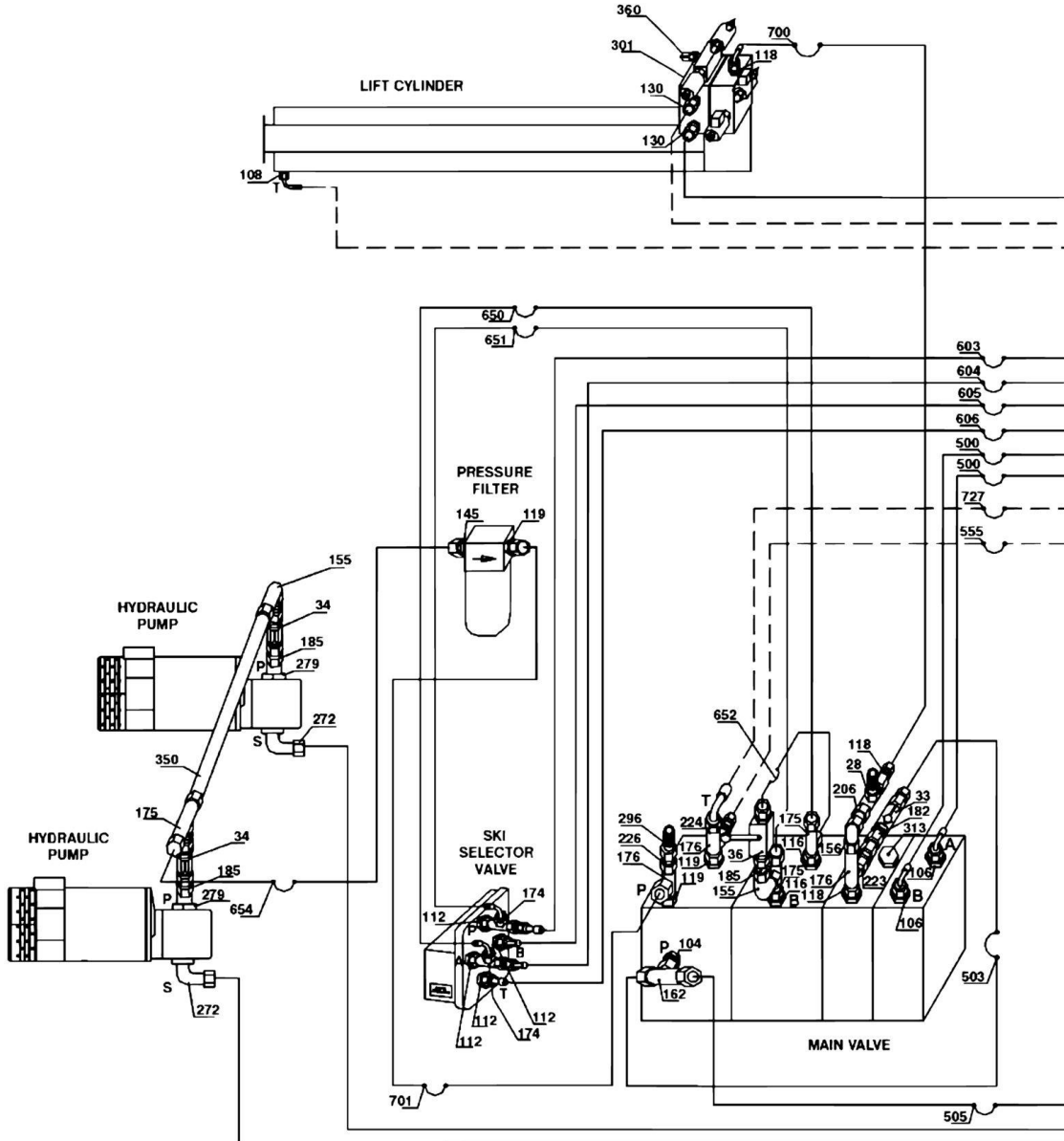
FIGURE 5-3. STEERING CYLINDER ASSEMBLY (SN 1200009628 through 1200020463)

ITEM	PART NUMBER	QTY	DESCRIPTION	REV
	H900015	Ref	STEERING CYLINDER ASSEMBLY	D
1	70000758	1	Barrel Weldment	
2	70000757	1	Rod Weldment	
6	70000749	2	Bushing	
7	70000750	1	Piston	
8	70000751	1	Head	
9	70000756	1	Spacer	
10	Not Available	1	Setscrew	
11	Kit	1	Seal, Piston	
12	Kit	1	O-Ring	
13	Kit	1	Seal, Rod	
14	Kit	1	Wiper	
15	Kit	1	O-Ring	
26	70000755	1	Seal Kit (Includes Items 11 - 15)	

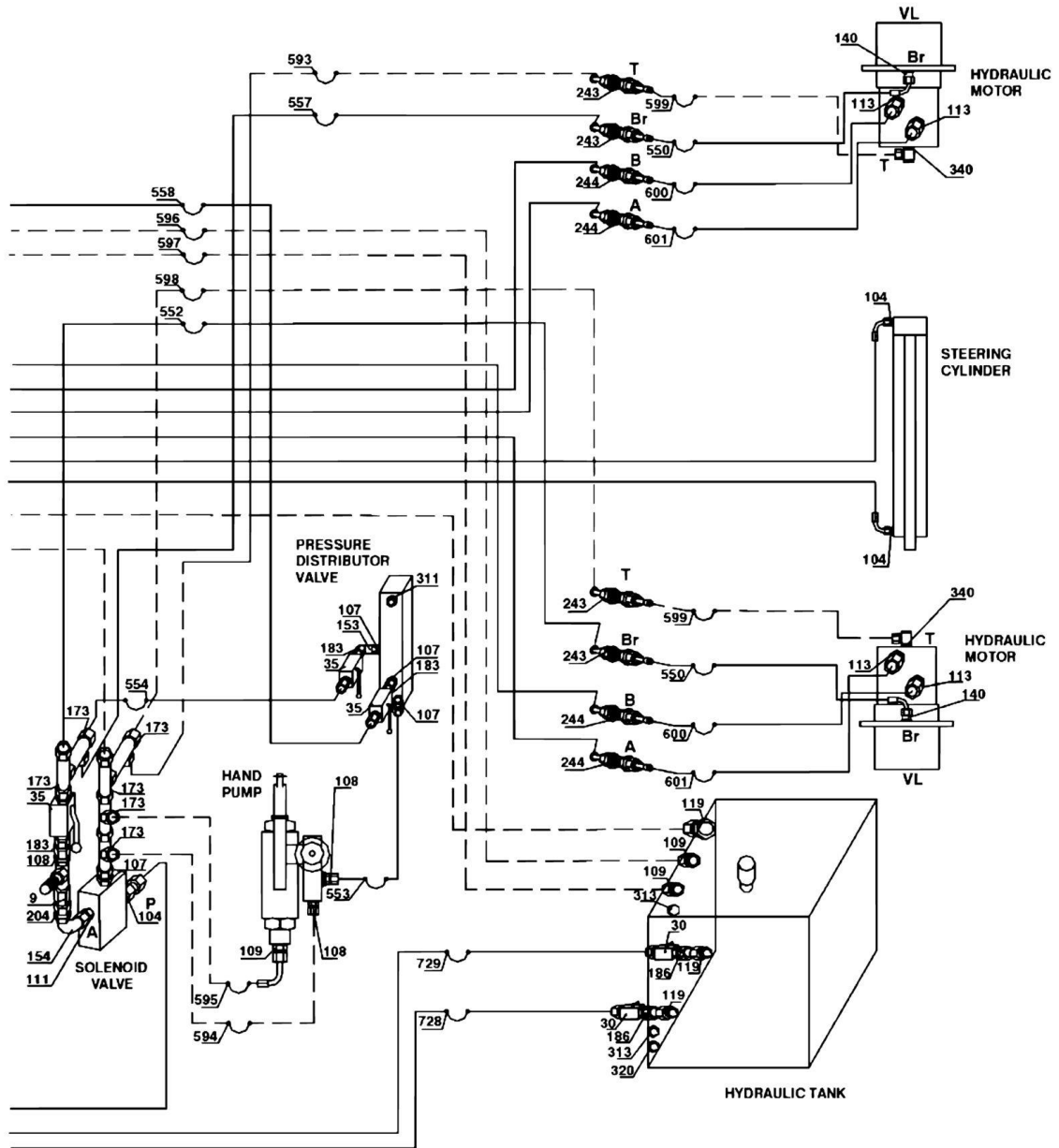
SECTION 6 - HYDRAULIC

SECTION 6 - HYDRAULIC

FIGURE 6-1. HYDRAULIC DIAGRAM



SECTION 6 - HYDRAULIC



SECTION 6 - HYDRAULIC

FIGURE 6-1. HYDRAULIC DIAGRAM

ITEM	PART NUMBER	QTY	DESCRIPTION	REV
		Ref	HYDRAULIC DIAGRAM	
	H900027	Ref	Hydraulic Diagram 153-12	3-B
	H900029	Ref	Hydraulic Diagram 180-12	3-B
9	H000018	1	Valve, Lowering Speed Adjustment Throttle UC-SVC-1701	
28	H000524	1	Valve, Throttle Check DRV 12G1/2in 350bar	
30	H000015	2	Valve, ND Ball NW 15	
33	H000351	1	Valve, Check RHD-8PL	
34	H000115	2	Valve, Check 15-PL	
35	H000344	3	Valve, 2/2 Directional Ball KH 10-PL	
36	H000358	1	Valve, 2/2 Directional Ball KH 15-PL	
	H001071	Ref	HYDRAULIC FITTING KIT	6
104	2142706	4	Fitting, Male Adapter GE 8-PLR-ED	
106	2142743	2	Fitting, Male Adapter GE 8-PL/R1/2-ED	
107	2142708	AR	Fitting, Male Adapter GE 10-PLR-ED	
108	2142709	4	Fitting, Male Adapter GE 10-PL/R3/8-ED	
109	2142710	3	Fitting, Male Adapter GE 10-PL/R1/2-ED	
111	2142711	1	Fitting, Male Adapter GE 12-PL/R1/4-ED	
112	2142712	4	Fitting, Male Adapter GE 12-PLR-ED	
113	2142713	4	Fitting, Male Adapter GE 12-PL/R1/2-ED	
116	2142715	2	Fitting, Male Adapter GE 15-PLR-ED	
118	2142716	AR	Fitting, Male Adapter GE 18-PLR-ED	
119	2142717	6	Fitting, Male Adapter GE 18-PL/R3/4-ED	
130	2140803	2	Fitting, Male Adapter GE 10-PLM 14x1, 5-ED/OMD	
140	H000148	2	Fitting, Connector M10x1 / M16x1, 5	
145	2142757	1	Fitting, Male Adapter GE 15-PLR-ED A3C/OMD	
153	2143403	3	Fitting, Adjustable Angle EW 10-PL/OMD	
154	2143404	AR	Fitting, Adjustable Angle EW 12-PL/OMD	
155	2143405	1	Fitting, Adjustable Angle EW 15-PL/OMD	
156	2143406	5	Fitting, Adjustable Angle EW 18-PL/OMD	
162	2142102	1	Fitting, Adjustable Tee ET 8-PL/OMD	
173	2142203	9	Fitting, Adjustable 90 EL 10-PL/OMD	
174	2142204	2	Fitting, Adjustable 90 EL 12-PL/OMD	
175	2142205	3	Fitting, Adjustable 90 EL 15-PL/OMD	
176	2142206	3	Fitting, Adjustable 90 EL 18-PL/OMD	
182	2143602	1	Fitting, Connector GZ 08-PL	
183	2143603	3	Fitting, Connector GZ 10-PL	
185	2143605	3	Fitting, Connector GZ 15-PL	
186	2143606	2	Fitting, Connector GZ 18-PL	
204	2142804	1	Fitting, Male Adapter EGE 12-LR-ED	
206	2142806	1	Fitting, Male Adapter EGE 18-LR-ED	
223	2143513	1	Fitting, Reducer RED 18/8-PL/OMD	
224	2143514	1	Fitting, Reducer RED 18/10-PL/OMD	
226	2143516	AR	Fitting, Reducer RED 18/15-PL/OMD	
243	2141503	4	Fitting, Bulkhead SV 10-PL/OMD	
244	2141504	4	Fitting, Bulkhead SV 12-PL/OMD	
272	2143705	2	Flange, Connecting BFK 18-PL/LK 40	
279	2143703	2	Flange, Connecting BFK 15-PL/LK 35	
296		Ref	Fitting Options:	
296	2142503	1	Fitting (Prior to SN 1200007554)	
296	2144105	1	Fitting (SN 1200007554 through 1200020463)	

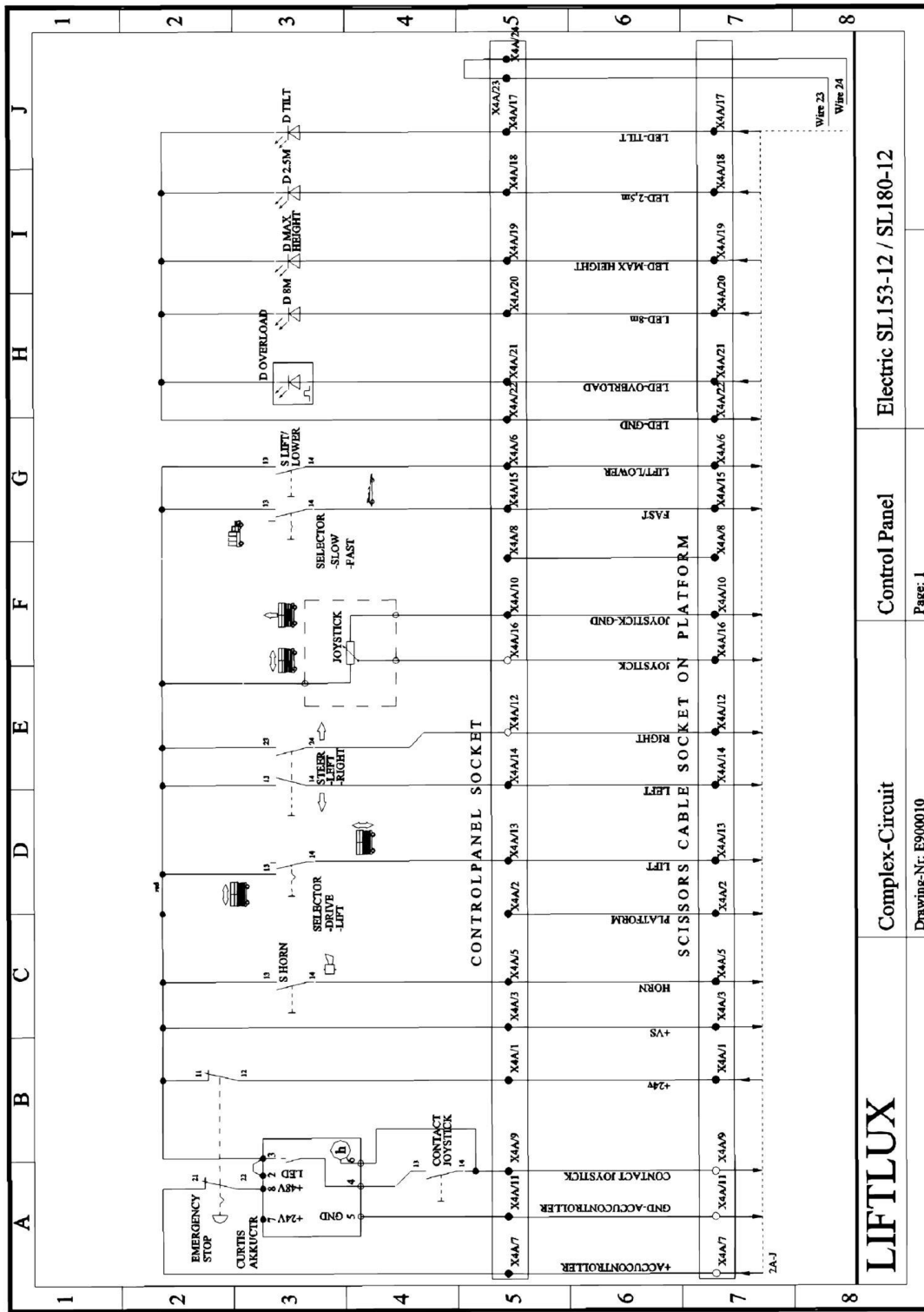
SECTION 6 - HYDRAULIC

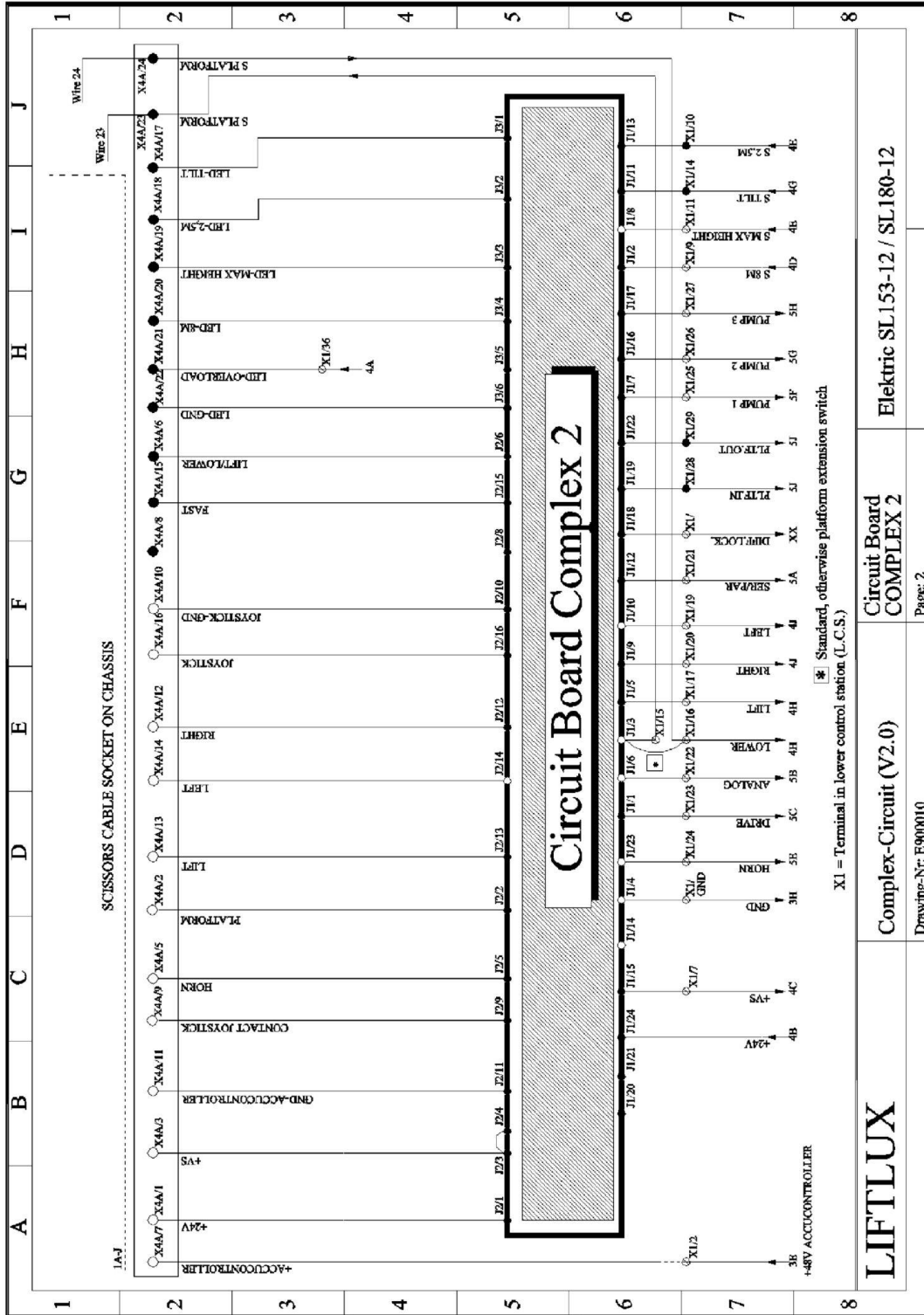
ITEM	PART NUMBER	QTY	DESCRIPTION	REV
301		Ref	Plug, Threaded Options:	
301	2143802	1	Plug, Threaded (Prior to SN 1200009630)	
301	2143801	1	Plug, Threaded (SN 1200009630 through 1200020463)	
311	2143803	1	Plug, Threaded VSTI R 1/4-ED	
313	2143807	3	Plug, Threaded VSTI R 1/2-ED	
320	2221214	1	Plug, Magnetic Oil Drain (3/4in with copper sealing ring)	
340	2143903	2	Fitting, Swivel SWVE 10 PLR-OMD	
350	3460515	1	Tube, RSt 35.4 NBK 160mm Long	
360	2221222	1	Fitting, M16x2 Test (SN 1200014646 through 1200020463)	
	H001070		HYDRAULIC HOSE KIT	2
500	2754528	2	Hose, 2 SN 06 DKOL 90 DKOL -2800	
503	2754527	1	Hose, 2 SN 06 DKOL DKOL - 610	
505	2754524	1	Hose, 2 SN 06 DKOL DKOL - 700	
550	2754534	2	Hose, 2 SN 08 DKOL 90 DKOL - 930	
552	2754535	1	Hose, 2 SN 08 DKOL 90 DKOL - 1660	
553	2754532	1	Hose, 2 SN 08 DKOL 90 DKOL -500	
554	2754536	1	Hose, 2 SN 08 DKOL 90 DKOL 90 (180grd) -900	
555	2754533	1	Hose, 2 SN 08 DKOL 90 DKOL - 600	
557	2754531	1	Hose, 2 SN 08 DKOL DKOL - 1200	
558	2754537	1	Hose, 2 SN 08 DKOL 90 DKOL 90 (180grd) -2700	
593	2754517	1	Hose, 1 SN 08 DKOL 90 DKOL -1560	
594	2754519	1	Hose, 1 SN 08 DKOL 90 DKOL 90 (180grd) -450	
595	2754520	1	Hose, 1 SN 08 DKOL 90 DKOL 90 (180grd) -620	
596	2754521	1	Hose, 1 SN 08 DKOL 90 DKOL 90 (180grd) -2250	
597	2754518	1	Hose, 1 SN 08 DKOL 90 DKOL -3150	
598	2754350	1	Hose, 1 SN 08 DKOL DKOL -1200	
599	2754515	2	Hose, 1 SN 08 DKOL DKOL -945	
600	2754541	2	Hose, 2 SN 10 DKOL 45 DKOL -910	
601	2754538	2	Hose, 2 SN 10 DKOL DKOL -880	
603	2754539	1	Hose, 2 SN 10 DKOL DKOL -1600	
604	2754540	1	Hose, 2 SN 10 DKOL DKOL -1700	
605	2754540	1	Hose, 2 SN 10 DKOL DKOL -1700	
606	2754539	1	Hose, 2 SN 10 DKOL DKOL -1600	
650	2754542	1	Hose, 2 SN 12 DKOL DKOL 90 -12:10 - 980	
651	2754542	1	Hose, 2 SN 12 DKOL DKOL 90 -12:10 - 980	
652	2754543	1	Hose, 2 SN 12 DKOL 90 DKOL 90 (180grd) -470	
654	2754544	1	Hose, 2 SN 12 DKOL 90 DKOL 90 (180grd) -660	
700	2754546	1	Hose, 2 SN 16 DKOL 90 DKOL 45 (180grd) -2000	
701	2754384	1	Hose, 2 SN 16 DKOL 90 DKOL 45 (180grd) -770	
727	2754523	1	Hose, 1 SN 16 DKOL 90 DKOL -840	
728	2754522	1	Hose, 1 SN 16 DKOL 45 DKOL -1000	
729	2754522	1	Hose, 1 SN 16 DKOL 45 DKOL -1000	

SECTION 7 - ELECTRICAL

SECTION 7 - ELECTRICAL

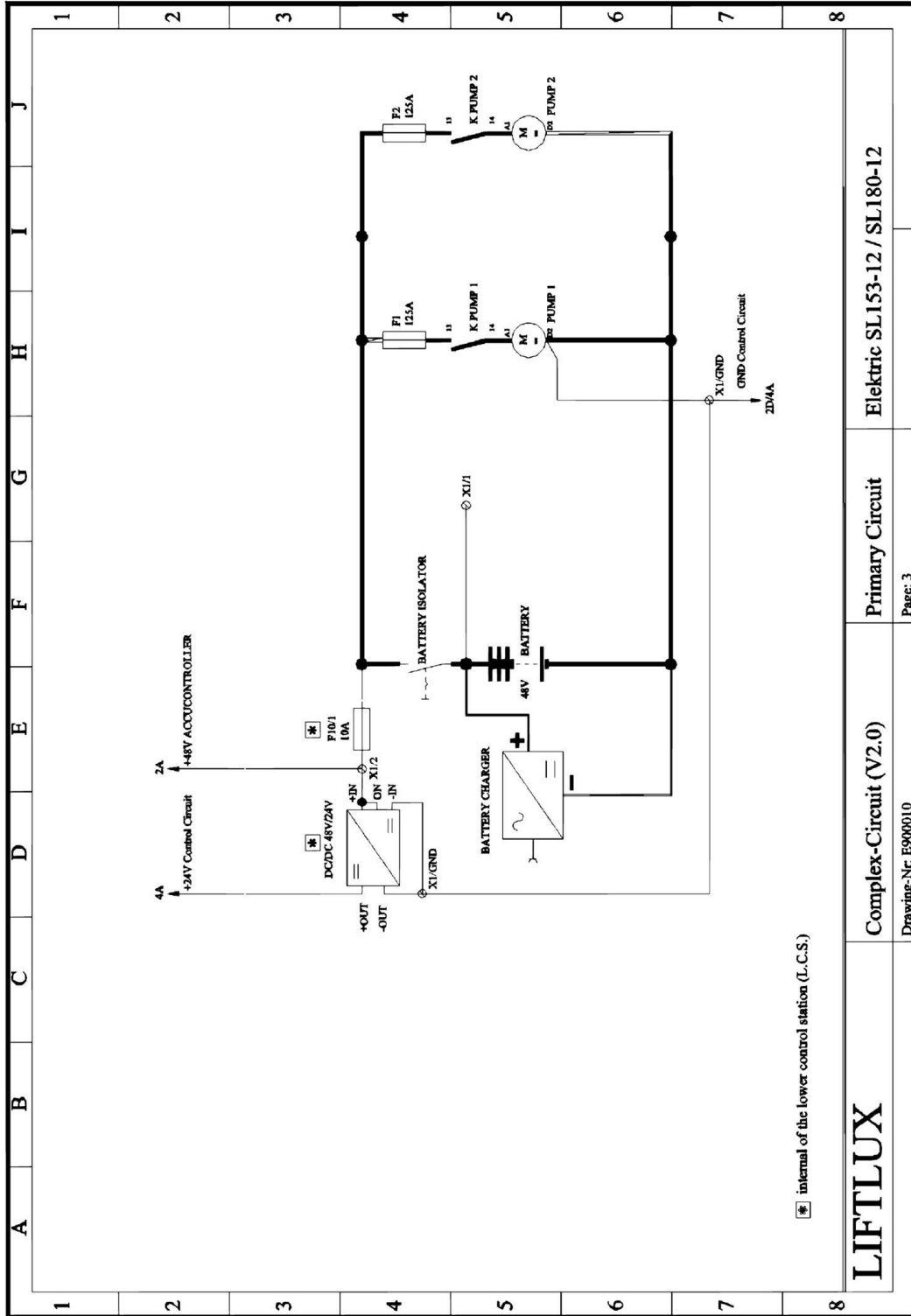
FIGURE 7-1. ELECTRICAL PLANS





LIFTLUX	Circuit Board COMPLEX 2	Electric SL153-12 / SL180-12
Complex-Circuit (V2.0)	Page: 2	
Drawing-Nr: E900010		

SECTION 7 - ELECTRICAL



internal of the lower control station (L.C.S.)

LIFTLUX

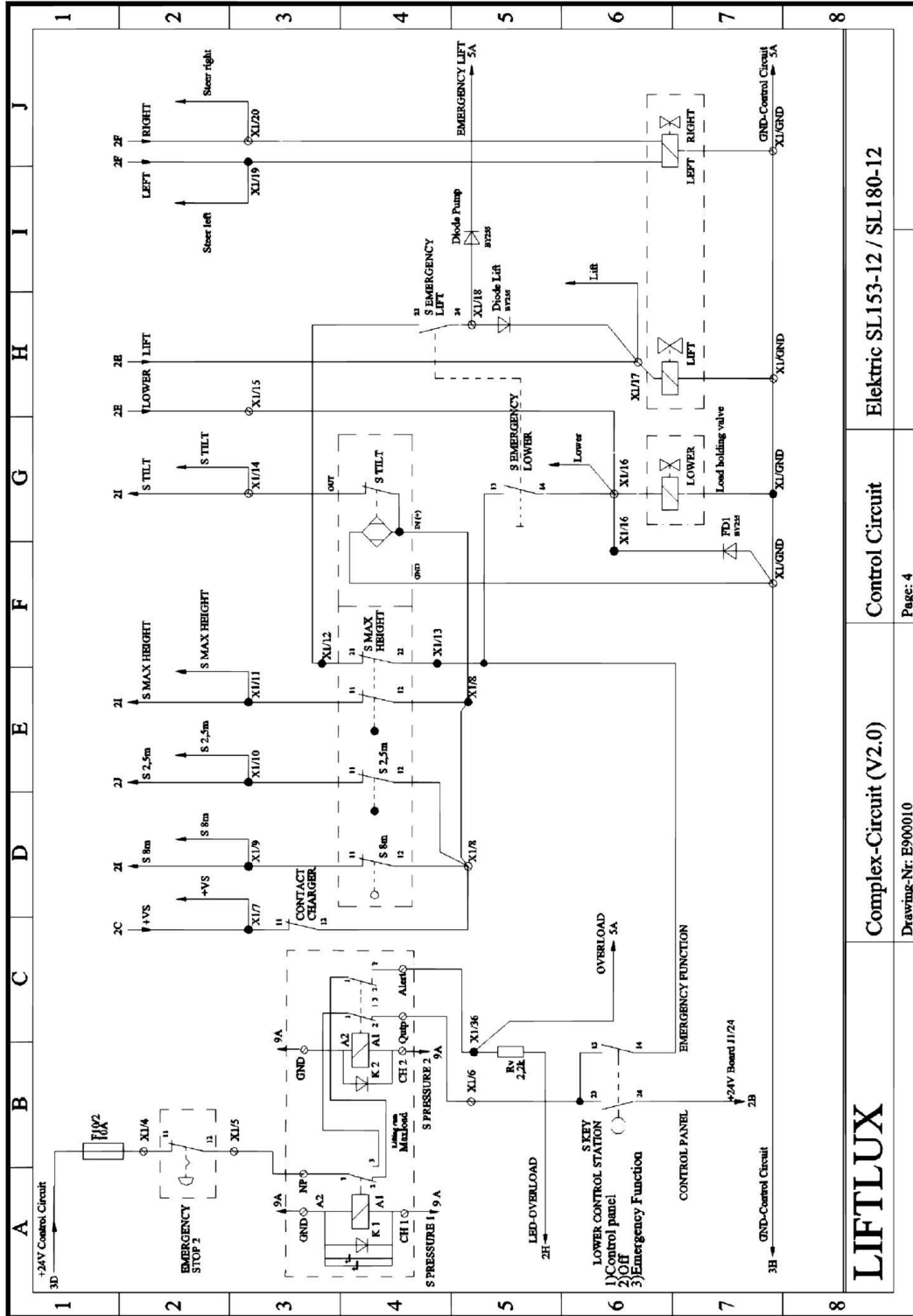
Complex-Circuit (V2.0)

Drawing-Nr: E900010

Primary Circuit

Page: 3

Elektric SL153-12 / SL180-12



Electric SL153-12 / SL180-12

Control Circuit

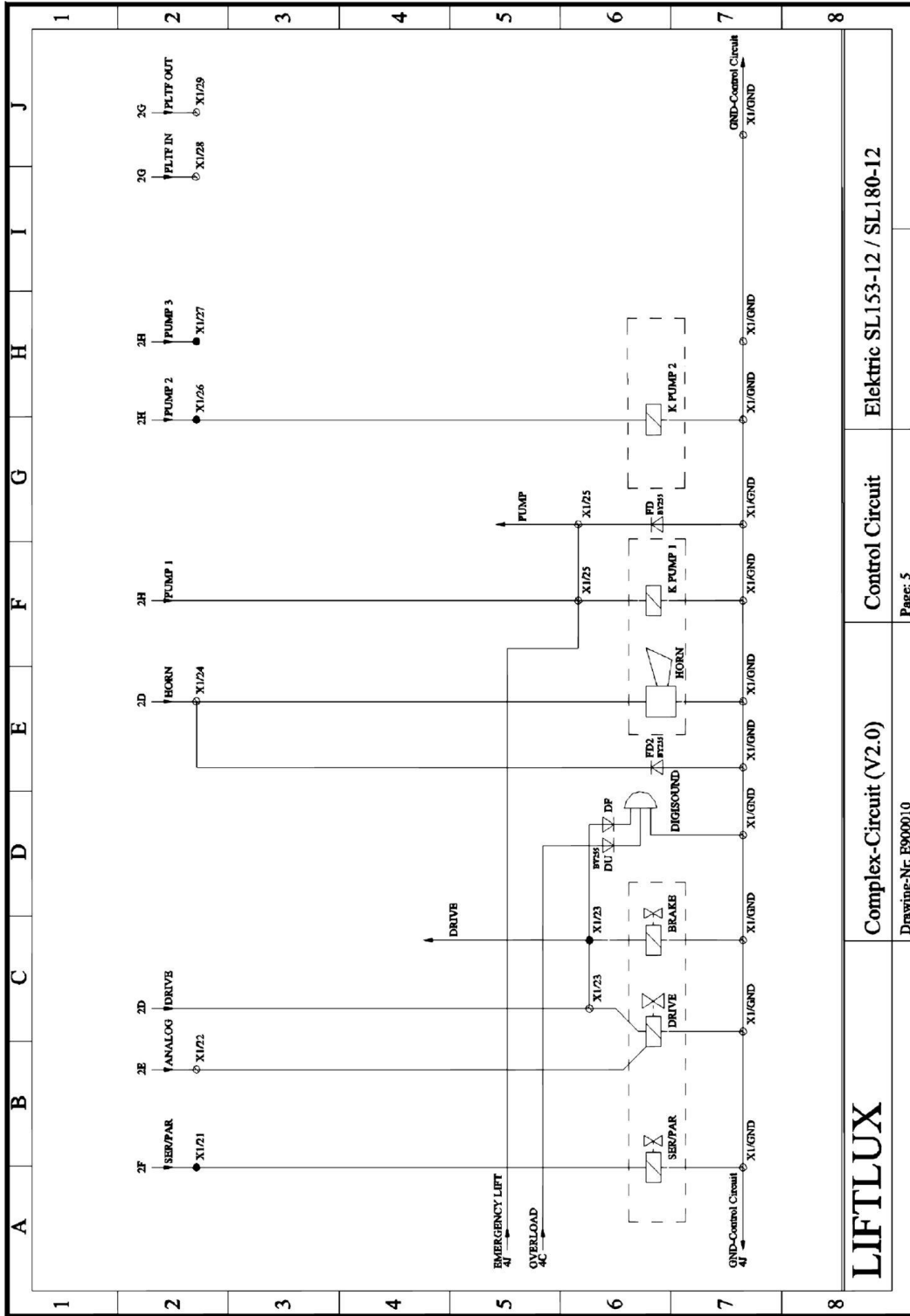
Complex-Circuit (V2.0)

Page: 4

Drawing Nr: E900010

LIFTLUX

SECTION 7 - ELECTRICAL



LIFTLUX

Complex-Circuit (V2.0) Control Circuit Elektric SL153-12 / SL180-12

Page: 5

Drawing-Nr: E900010

A	B	C	D	E	F	G	H	I	J
1	1	2	3	4					
2	3G		DO/DC-IN/ON	3D	FI(1) (10A) OUT				
3	3H-48V Accrator MVS	3G	Pressure Switch 1 BN	9C	FI(2) (10A) OUT				
4	4S Emergency Stop 2 / I1	4B	S Emergency Stop 2 / I2	4B					
5	5N Max Load Modal NP J1.3	4B							
6	6N Max Load Modal Outp J1.1	4B							
7	7D Contact Changer / I1	4C	+VS	4C	S Key L.C.S. / I3, 23				
8	8C Contact Changer / I2	4C	S 2.5m / I2	4D	Complex J1/I5 +VS				
9	9S Max Height / I2	4E	S Tilt / I1N+	4G					
10	10S Max Height / I1	4E	S 8m / I1	4D	Complex J1/I2 S 8m				
11	11S Max Height / I1	4E	S 2.5m	4B	Complex J1/I3 S 2.5m				
12	12S Max Height / I1	4F	S Max Height	4E	Complex J1/I8 S Max Height				
13	13S Max Height / I2	4F			S Emergency Lift / I23				
14	14S Tilt / OUT	4G	S Tilt	4G	S Key L.C.S.				
15	15S Platform	2B			Complex J1/I1 S Tilt				
16	16L Lower (load hold, valves)	4G	S Platform	2B	Complex J1/I3 Lower				
17	17L Lift Valve	4H	Lift	4I	S Emergency Lower / I4				
18	18S Steer Right Valve	4I	Diode Lift (Cathode)	4H	FD1 (Cathode)				
19	19S Steer Left Valve	4I	Diode Pump (Anode)	4I	Complex J1/I5 Lift				
20	20S Steer Right Valve	4I	Diode Lift (Anode)	4H	S Emergency Lift / I24				
21	21S Steer/Par Valve	5A	Left	4I	Complex J1/I10 Left				
22	22 Drive Valve Analog	5C	Right	4I	Complex J1/I9 Right				
23	23H Drive Valve IN	5C			Complex J1/I12 Ser/Par				
24	24B Status Valve	5C	Drive	5D	Complex J1/I6 Analog				
25	25K Pump 1 / A1	5F	Diode PD2 (Cathode)	5E	Complex J1/I1 Drive				
26	26S Pump 2 / A1	5G	Diode PD (Cathode)	5G	Diode DP (Anode)				
27			Diode DP1 (Cathode)	5I	Diode Pump (Cathode)				
28					Complex J1/I16 Pump 2				
29					Complex J1/I17 Pump 3				
30					Complex J1/I19 PLTF IN				
31					Complex J1/I22 PLTF OUT2G				
32									
33									
34									
35									
36	36N Max Load Modal Alert J1.2	4B	Diode DU (Anode)	5D	XAMZ1 (Rc)				

② 15-16A Connection: Type without Platform Extension switch
 ③ 8-9 Connection: Type without drive disconnection by S 8m

LIFTLUX

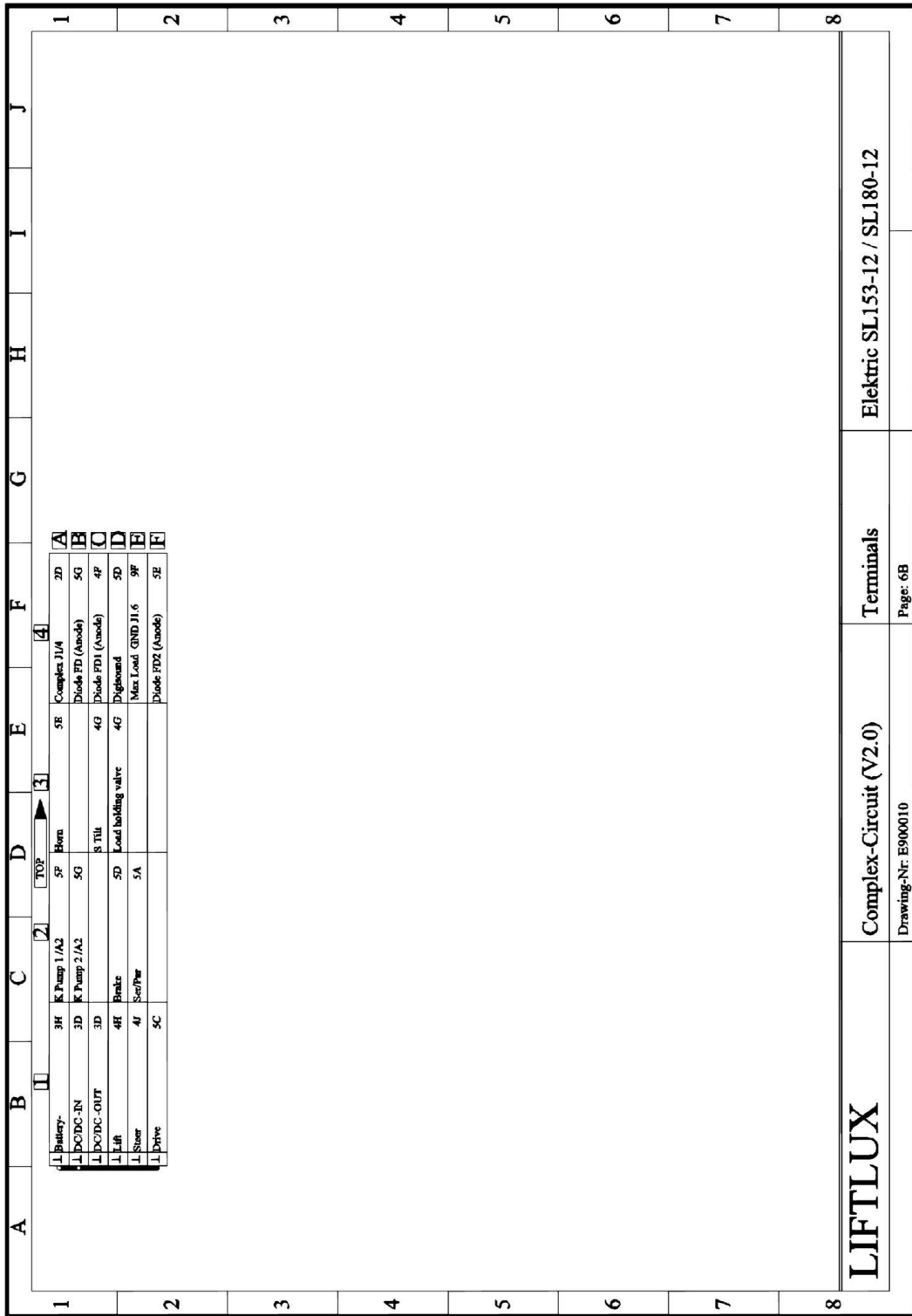
Electric SL153-12 / SL180-12

Complex-Circuit (V2.0)

Terminals

Page: 6A

SECTION 7 - ELECTRICAL



LIFTLUX

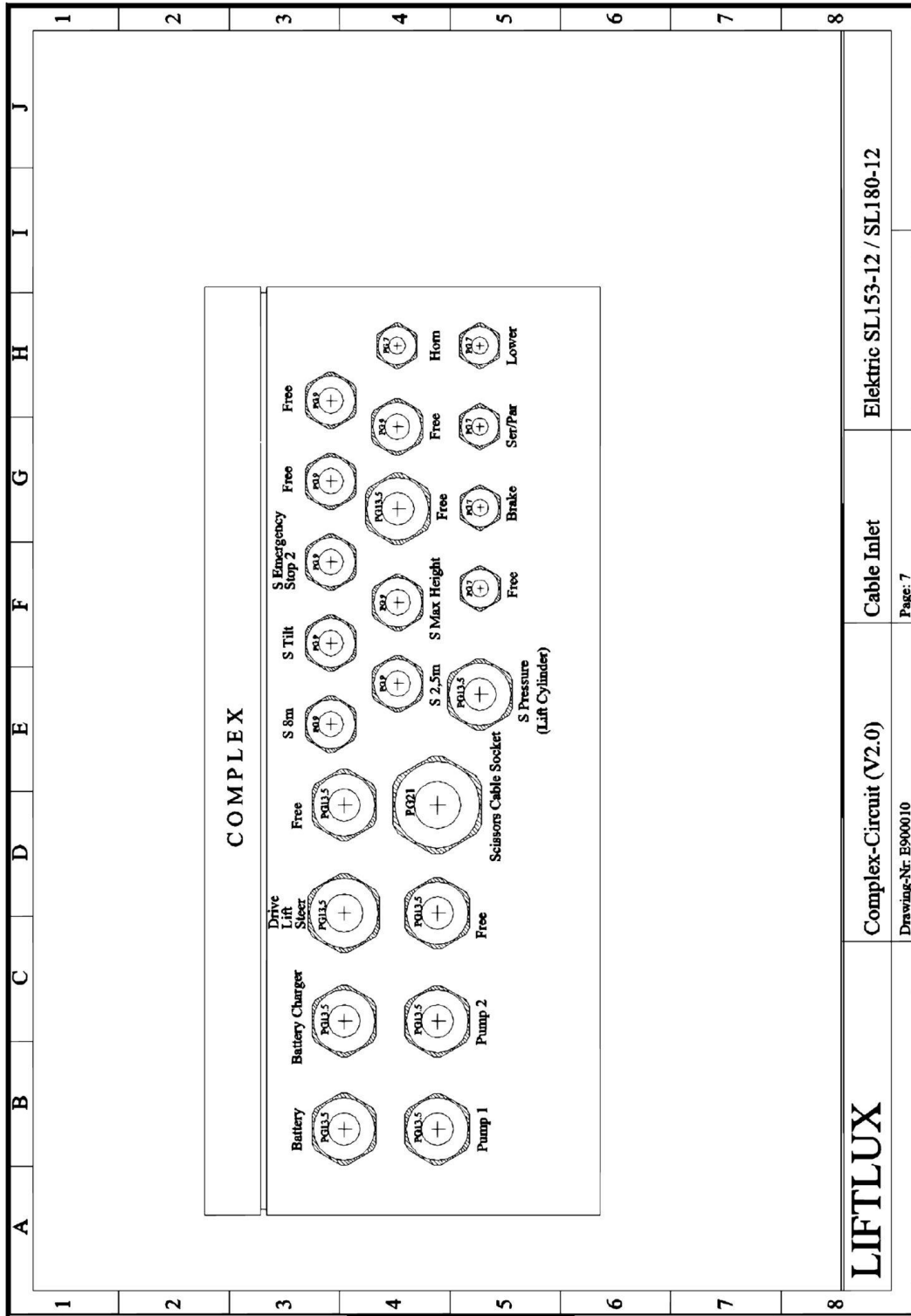
Complex-Circuit (V2.0)

Terminals

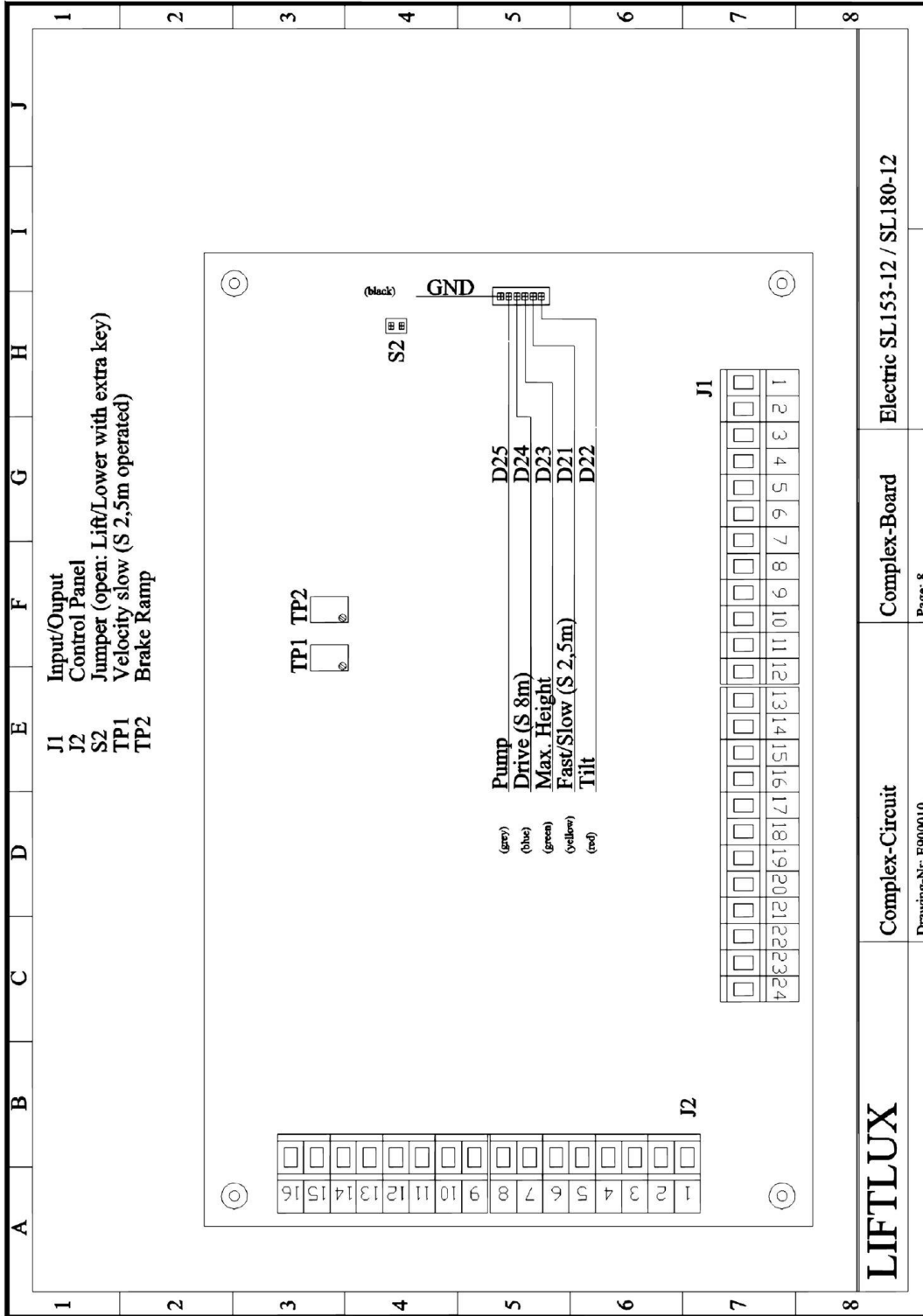
Electric SL153-12 / SL180-12

Drawing-Nr: E900010

Page: 6B



SECTION 7 - ELECTRICAL



LIFTLUX

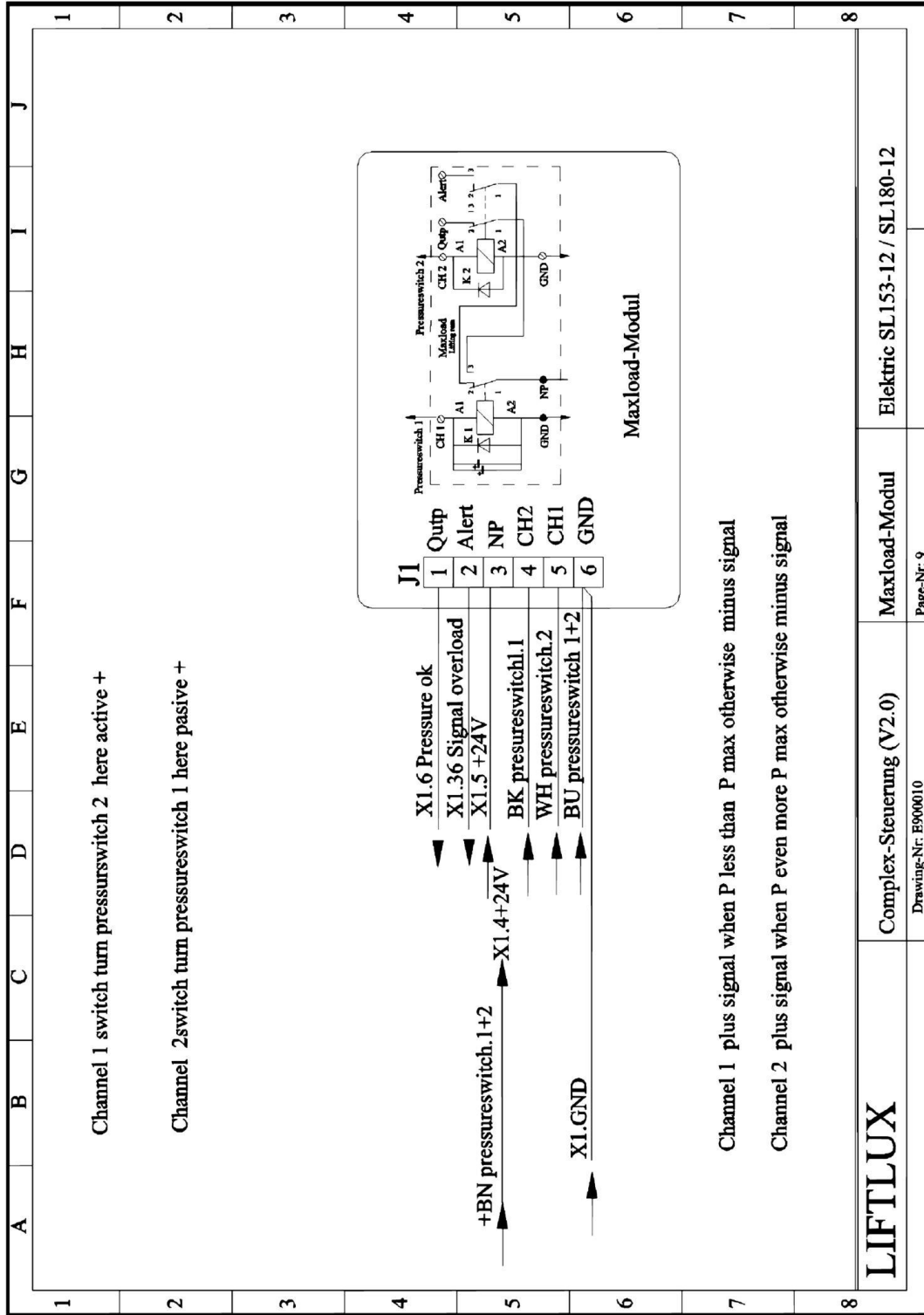
Complex-Circuit

Complex-Board

Electric SL153-12 / SL180-12

Page: 8

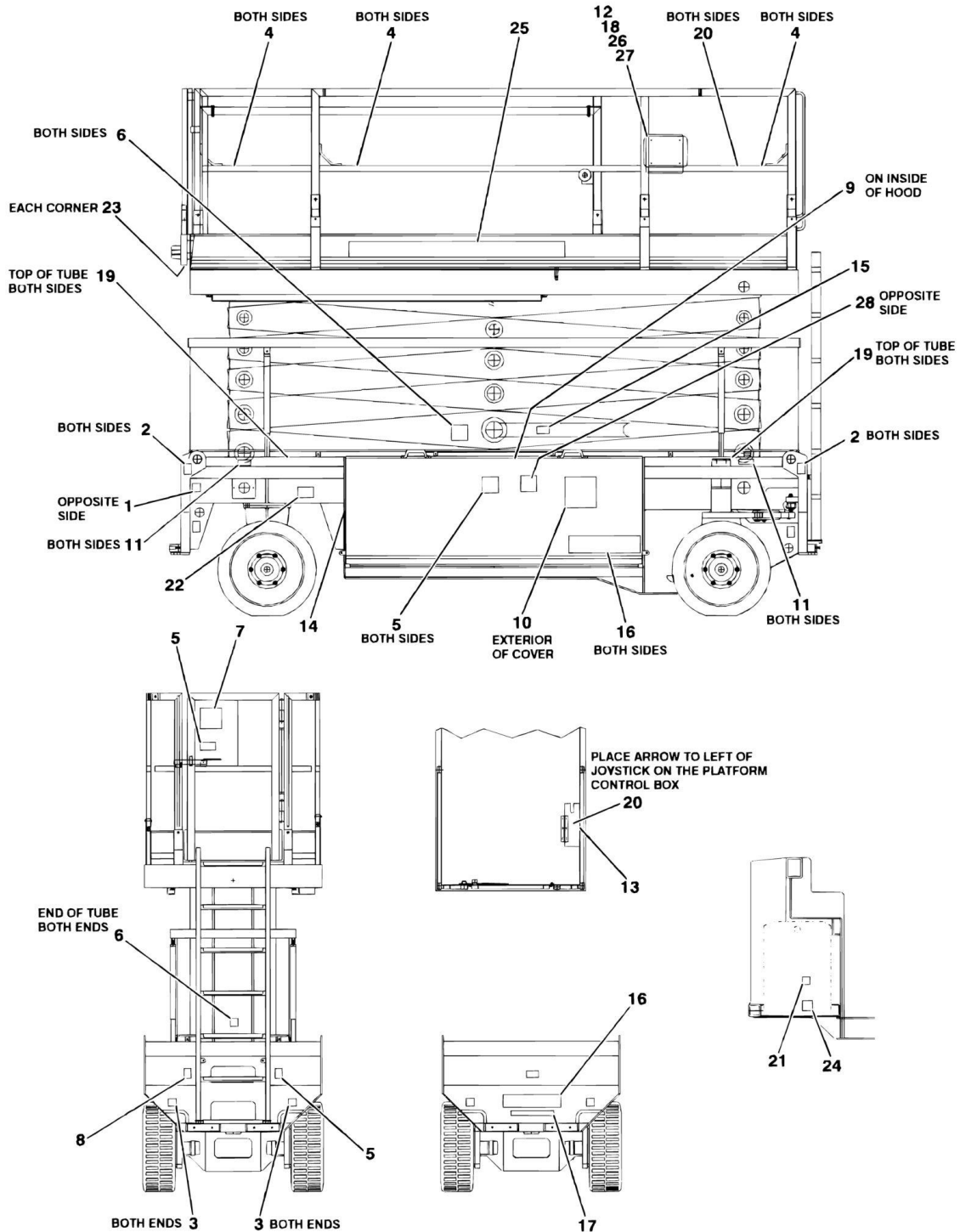
Drawing-Nr: E900010



SECTION 8 - DECALS

SECTION 8 - DECALS

FIGURE 8-1. DECAL INSTALLATION



SECTION 8 - DECALS

FIGURE 8-1. DECAL INSTALLATION

ITEM	PART NUMBER	QTY	DESCRIPTION	REV
		Ref	DECAL INSTALLATION	
	0274714	Ref	Decal Installation 153-12	C
	0274715	Ref	Decal Installation 180-12	C
1	1701644	1	Decal, Battery Charger	
2	1703811	4	Decal, Lifting Lug	
3	1703814	4	Decal, Tie Down	
4	1704277	6	Decal, Lanyard Attach	
5	1705671	4	Decal, Electrocution	
6	1705673	4	Decal, Crushing	
7	1706583	1	Decal, Capacity	
8	1706472	1	Decal, Fall Hazard	
9	1706615	1	Decal, Manual Descent	
10	1706482	1	Decal, Manual Descent Inside	
11		Ref	Decal, Wheel Load Options:	
11	1706585	4	Decal, Wheel Load 153-12	
11	1706589	4	Decal, Wheel Load 180-12	
12	2080040	4	Fastener, Huck	
13	1706485	1	Decal, Control Box Location	
14	1706512	1	Decal, Ground Control (Located on Opposite End of Box) (Prior to SN 1200011212)	
15	1706487	1	Decal, Safety Prop	
16	1702773	3	Decal, JLG	
17	1704885	1	Decal, Website	
18	1701509	1	Decal, Manual	
19	1703687	4	Decal, Direction Arrow	
20	1703819	3	Decal, Direction Arrow	
21	1704412	1	Decal, Hydraulic Oil	
22	Not Available	1	Nameplate, Serial Number	
23	4420051	1.2 m	Tape, Safety	
24	1703812	1	Decal, Hydraulic Oil	
25		Ref	Decal, Model Options:	
25	1706586	2	Decal, Model 153-12 Liftlux	
25	1706590	2	Decal, Model 180-12 Liftlux	
26	0860520	1	Box, Manual Storage	
27	1060279	1	Lanyard	
28	1705670	1	Decal, Fire Hazard	

SECTION 9 - RECOMMENDED SERVICE PARTS STOCK

SECTION 9 - RECOMMENDED SERVICE PARTS STOCK

SECTION 9 - RECOMMENDED SERVICE PARTS STOCK

FIGURE 9-1. MODELS LIFTLUX 153-12 AND LIFTLUX 180-12 STANDARD PARTS

ITEM	PART NUMBER	QTY	DESCRIPTION	REV
	Note	Ref	Note: The following list will service one machine (built to current production per date on the front cover) with emergency repair parts which can be installed in the field. Parts from the list should be replaced when inventory is depleted to keep service parts stock supplied. For further information, contact your JLG dealer or the JLG Industries Parts Department.	
		Ref	STANDARD PARTS	
	E000044	1	Switch, Tilt (153-12)	
	E000129	1	Switch, Tilt (180-12)	
	E000059	1	Switch, Battery Disconnect	
	E000060	1	Fuse, 125A	
	E000062	1	Contactor, DC	
	E000377	1	Switch, Emergency Stop	
	70000019	12	Element, Pressure Filter	
	7012986	1	Coil	
	70000450	1	Coil	
	H000241	12	Breather, Hydraulic	
	E000436	1	Switch, Self-Centering	
	E000378	1	Switch, Key	
	S200238	1	Latch, Gate	
	E000412	1	Switch, Push Button	
	E000511	1	Switch, On/Off	
	E000051	1	Joystick	
	E000439	1	Switch, 3 Step	

SECTION 9 - RECOMMENDED SERVICE PARTS STOCK

FIGURE 9-2. MODELS LIFTLUX 153-12 AND LIFTLUX 180-12 VARIABLE PARTS

ITEM	PART NUMBER	QTY	DESCRIPTION	REV
	Note	Ref	Note: The following list will service one machine (built to current production per date on the front cover) with emergency repair parts which can be installed in the field. Parts from the list should be replaced when inventory is depleted to keep service parts stock supplied. For further information, contact your JLG dealer or the JLG Industries Parts Department.	
		Ref	VARIABLE PARTS	
	E000078	1	Converter, AC/DC	
	E700100	1	Module, Load Sensing	
	E000218	1	Card, Complex Control	
	E007404	1	Card, Trigger Control	
	E000376	1	Switch, Limit	

SECTION 10 - SPECIAL OPTIONS

SECTION 10 - SPECIAL OPTIONS

FIGURE 10-1. SPECIAL OPTIONS

ITEM	PART NUMBER	QTY	DESCRIPTION	REV
	Note	Ref	Note: This list is to accomodate machines ordered with special equipment. Options may not be applicable to all models. For more specific parts information contact JLG Parts Department.	
		Ref	MISCELLANEOUS SPECIAL OPTIONS	
	0256789	Ref	Camera Mount Assembly	3
		Ref	Tools For Service:	
	7002828	1	Stripper, Wire	
	7002821	1	Crimper, Wire (To Install Wire Ends to Wires)	
	7002823	1	Extractor, Pin/Socket - Universal (For Most Connectors)	
	4460467	1	Extractor - 16-18 Gauge (For Deutsch Connectors)	
	4460510	1	Extractor - 12-14 Gauge (For Deutsch Connectors)	
	7002822	1	Screwdriver, Potentiometer (To Adjust Drive Controller)	
	7016654	1	Screwdriver, Magnetic	
	7004275	1	Installer, Seal - 1in	
	7004276	1	Installer, Seal - 1 1/2in	
	7002826	1	Installer, Seal - 2in	
		Ref	Fluids	
	3020008	AR	Oil, Transmission ATF 184	
	2300014	AR	Oil, Hydraulic HLP 46	

PART NUMBER INDEX

SECTION 10 - SPECIAL OPTIONS

00106549, 17, 19, 23, 33, 39, 45, 50, 53, 57	1706586 85	2754534 69	70000257 13
00106559, 17, 19, 23, 33, 39, 45, 50, 53, 57	1706589 85	2754535 69	70000258 13
0181847 53	1706590 85	2754536 69	70000259 13
0256789 92	1706615 85	2754537 69	70000260 13
0274714 85	2080040 85	2754538 69	70000261 13
0274715 85	2140803 68	2754539 69	70000440 23
0307544 27	2141503 68	2754540 69	70000442 23
0318854 27	2141504 68	2754541 69	70000443 23
0700517 33	2142102 68	2754542 69	70000449 23
0700614 50	2142203 68	2754543 69	70000450 23, 88
0700619 50	2142204 68	2754544 69	70000513 29
0700621 50	2142205 68	2754546 69	70000514 29
0701014 50	2142206 68	3020008 92	70000515 29
0701016 50	2142503 68	3290505 33	70000516 29
0701024 50	2142706 68	3290605 50	70000517 29
0701219 50	2142708 68	3290805 41, 45	70000518 29
0701224 50	2142709 68	3291005 41, 45, 50	70000519 29
0701229 9	2142710 68	3291205 9, 41	70000520 29
0701627 9	2142711 68	3291605 9, 41, 50, 51	70000521 29
0701628 41	2142712 68	3332015 17	70000522 29
0760606 33	2142713 68	3371708 41	70000523 29
0760810 45	2142715 68	3460515 69	70000524 29
0760812 40, 41	2142716 68	3760491 50	70000525 29
0761010 19, 45	2142717 68	3760518 51	70000526 29
0761014 41	2142743 68	3820408 33	70000527 29
0761015 45	2142757 68	3820510 19	70000528 29
0761029 41	2142804 68	4010508 24	70000529 29
0761212 9	2142806 68	4031713 57	70000530 29
0761215 41	2143403 68	4031912 57	70000531 29
0761216 41	2143404 68	4032007 24	70000532 29
0761229 41	2143405 68	4240032 45	70000533 29
0762015 41	2143406 68	4420051 85	70000534 29
0762019 17	2143513 68	4460467 92	70000535 29
0771619 9	2143514 68	4460510 92	70000536 29
0771620 9	2143516 68	4811900 40, 41	70000537 29
0860520 85	2143602 68	4812000 41	70000538 29
0893076 27	2143603 68	4812100 41	70000539 29
1001092113 24	2143605 68	4812300 41, 51	70000540 29
1001092114 24	2143606 68	4812500 17, 41	70000541 29
1001092405 31	2143703 68	4831700 33	70000542 29
1001092406 31	2143705 68	4832000 19, 41, 45	70000543 29
1001109990 53	2143801 69	5241600 9	70000595 23
1003107 27	2143802 69	5242000 17	70000596 23
1060279 85	2143803 69	70000019 23, 88	70000597 23
1701509 85	2143807 69	70000185 57	70000598 23
1701644 85	2143903 69	70000186 57	70000599 23
1702773 85	2144105 68	70000187 57	70000749 63
1703687 85	2221214 69	70000188 57	70000750 63
1703811 85	2221222 69	70000189 57	70000751 63
1703812 85	2300014 92	70000239 13	70000755 63
1703814 85	2560141 53	70000240 13	70000756 63
1703819 85	2754350 69	70000241 13	70000757 63
1704277 85	2754384 69	70000242 13	70000758 63
1704412 85	2754515 69	70000243 13	70000952 31
1704885 85	2754517 69	70000244 13	70000953 31
1705670 85	2754518 69	70000245 13	70000954 31
1705671 85	2754519 69	70000246 13	70000955 31
1705673 85	2754520 69	70000247 13	70000956 31
1706472 85	2754521 69	70000248 13	70001009 19
1706482 85	2754522 69	70000249 13	70001010 19
1706485 85	2754523 69	70000250 13	70001011 19
1706487 85	2754524 69	70000251 13	70001012 19
1706512 85	2754527 69	70000252 13	70001013 19
1706583 85	2754528 69	70000253 13	70001014 19
1706585 85	2754531 69	70000254 13	70001015 19
	2754532 69	70000255 13	70001016 19
	2754533 69	70000256 13	70001114 23

SECTION 10 - SPECIAL OPTIONS

70003616	31	E000564	19	S000055	19, 50	S007029	41
7002821	92	E000600	19	S000056	33	S007030	41
7002822	92	E001328	53	S000069	50	S007031	41
7002823	92	E001330	53	S000083	39	S007033	41
7002826	92	E007404	90	S000090	17	S007111	40
7002828	92	E700100	31, 90	S000118	39	S007112	40
7004275	92	E900059	31	S000120	39	S007113	40
7004276	92	H000013	24	S000124	39	S007114	40
7010543	23	H000015	68	S000139	41	S007115	40
7012941	23	H000016	23	S000140	41	S007119	40
7012955	57	H000018	68	S000141	9, 39, 41, 50	S009001	23, 24
7012967	57	H000019	23	S000145	50	S015312-110-01-1	19
7012986	23, 57, 88	H000020	23	S000178	39	S015312-110-02-0	19
7012998	57	H000021	23	S000182	39	S015312-110-48-0	19
7016654	92	H000028	23, 27	S000191	39	S015312-120-00-0	9
7020127	11	H000071	57	S000192	39	S015312-120-01-0	9
7020128	11	H000112	27	S000193	39	S015312-120-02-0	9
7020129	11	H000115	68	S000233	39	S015312-130-00-0	17
7027861	11	H000148	68	S000234	39	S015312-151-00-0	33
7027912	27	H000191	27	S000237	50	S015312-162-00-0	23
7027938	11	H000193	9, 11	S000242	9	S015312-162-05-0	24
7027939	11	H000205	27	S000258	17	S015312-170-00-0	45
7027940	11	H000206	27	S000259	17	S015312-180-00-0	19
7027961	23	H000207	27	S000260	17	S015312-200-00-0	39
7028846	27	H000218	9, 13	S000261	17	S015312-210-00-0	40
7028847	27	H000241	24, 88	S000262	17	S015312-220-00-0	40
7028848	27	H000271	57	S000263	61	S015312-230-00-0	40
7028849	27	H000282	23	S000264	9	S015312-240-00-1	41
7028893	27	H000285	23, 29	S000439	50	S015312-240-00-2	41
8007894	27	H000344	68	S000510	50	S015312-250-00-0	41
8007915	27	H000351	68	S001238	39	S015312-260-00-0	41
8007935	27	H000358	68	S001240	39	S015312-300-00-0	50
8007939	27	H000363	23	S001241	39	S015312-300-40-0	50
8007944	27	H000389	27	S001443	50	S015312-310-00-0	50
8007945	27	H000524	68	S001445	50	S015312-311-00-0	51
8007953	27	H000530	57	S001491	39	S015312-320-00-0	51
8007954	27	H000542	27	S001496	39	S015312-321-00-0	51
E000044	23, 88	H000580	27	S001594	41	S015312-321-12-0	51
E000051	53, 88	H000683	9, 61	S001596	45	S015312-510-00-0	24
E000059	23, 88	H000684	57	S001676	33	S015312-600-07-0	24
E000060	23, 88	H001070	69	S001677	51	S018012-200-00-0	39
E000061	23	H001071	68	S001802	39	S018012-210-00-0	40
E000062	23, 88	H003064	61	S001803	39	S018012-220-00-0	40
E000063	23	H003066	61	S001804	39	S018012-230-00-0	40
E000078	31, 90	H003068	61	S001805	39	S200134	41
E000083	53	H003075	61	S001806	39	S200151	40
E000102	23	H003080	61	S001807	39	S200152	40
E000103	23, 53	H003084	57	S001808	39	S200153	40
E000129	23, 88	H003090	57	S001809	39	S200154	40
E000218	31, 90	H003109	57	S001810	9, 39, 57	S200155	40
E000269	39	H003113	57	S001811	9	S200156	40
E000304	53	H005243	57	S001832	9	S200157	40
E000371	23	H005244	57	S001833	45	S200158	40
E000376	39, 90	H005247	27	S001834	45	S200159	40
E000377	23, 53, 88	H005250	27	S003991	9, 17	S200160	40
E000378	31, 88	H005259	24	S004034	41	S200161	40
E000407	31	H005783	23	S004091	9	S200162	40
E000412	53, 88	H705721	57	S004500	19	S200163	40
E000419	53	H705722	57	S004501	19	S200164	40
E000420	53	H705723	57	S005042	45	S200165	40
E000432	53	H705724	57	S005049	50	S200166	40
E000436	31, 53, 88	H900015	9, 63	S006610	9	S200167	40, 41
E000439	53, 88	H900027	68	S006660	9	S200168	40
E000481	23	H900029	68	S006808	9	S200169	41
E000482	23, 53	S000009	53	S007026	41	S200170	40
E000504	53	S000030	50	S007027	41	S200171	40
E000511	53, 88	S000031	50	S007028	41	S200172	41

SECTION 10 - SPECIAL OPTIONS

S200173	41	S200413	23	S200448	51	S900145	50
S200174	41	S200414	24	S200449	51	S900146	50
S200175	40	S200415	24	S200450	51	S900147	50
S200176	41	S200417	24	S200451	51	S900148	50
S200182	57	S200418	23	S200452	51	S900149	50
S200184	57	S200419	33	S200910	57	S900150	50
S200185	57	S200420	41	S900006	19	S900151	42
S200224	51	S200421	45	S900047	50	S900175	42
S200230	51	S200422	45	S900048	50	S900185	19
S200231	51	S200424	45	S900049	50	S900186	50
S200238	51, 88	S200426	57	S900050	50	S900216	50, 51
S200239	9	S200434	61	S900051	50	S900217	50, 51
S200263	24	S200435	61	S900131	9	S900218	17
S200275	40	S200436	61	S900133	9	S900313	40
S200403	9	S200437	61	S900134	9	S900314	40
S200404	9	S200440	51	S900135	23	S900315	40
S200405	17	S200441	51	S900136	19	S900317	40
S200406	17	S200442	51	S900137	45	X15312L	51
S200407	17	S200443	51	S900138	45	X18012L	51
S200410	19	S200444	51	S900142	50		
S200411	24	S200445	51	S900143	50		
S200412	24	S200447	51	S900144	51		



An Oshkosh Corporation Company

JLG Industries, Inc.
1 JLG Drive
McConnellsburg PA. 17233-9533
USA
Phone: +1-717-485-5161
Customer Support Toll Free: 1-877-554-5438
Fax: +1-717-485-6417

JLG Worldwide Locations

JLG Industries (Australia)
P.O. Box 5119
11 Bolwarra Road
Port Macquarie
N.S.W. 2444
Australia
Phone: +61 2 65811111
Fax: +61 2 65813058

JLG Latino Americana Ltd.
Rua Antonia Martins Luiz, 580
Distrito Industrial João Narezzi
13347-404 Indaiatuba - SP
Brazil
Phone: +55 19 3936 8870
Fax: +55 19 3935 2312

JLG Industries (UK) Ltd
Bentley House
Bentley Avenue
Middleton
Greater Manchester
M24 2GP
England
Phone: +44 (0)161 654 1000
Fax: +44 (0)161 654 1001

JLG France SAS
Z.I. de Baulieu
47400 Fauillet
France
Phone: +33 (0)5 53 88 31 70
Fax: +33 (0)5 53 88 31 79

JLG Deutschland GmbH
Max-Planck-Str. 21
D - 27721 Ritterhude-Ihlpohl
Germany
Phone: +49 (0)421 69 350 20
Fax: +49 (0)421 69 350 45

JLG Equipment Services Ltd.
Rm 1107 Landmark North
39 Lung Sum Avenue
Sheung Shui N.T.
Hong Kong
Phone: +852 2639 5783
Fax: +852 2639 5797

JLG Industries (Italia) s.r.l.
Via Po. 22
20010 Pregnana Milanese - MI
Italy
Phone: +39 029 359 5210
Fax: +39 029 359 5845

JLG Europe B.V.
Polaris Avenue 63
2132 JH Hoofddorp
The Netherlands
Phone: +31 (0)23 565 5665
Fax: +31 (0)23 557 2493

JLG Polska
Ul. Krolewska
00-060 Warszawa
Poland
Phone: +48 (0)914 320 245
Fax: +48 (0)914 358 200

Plataformas Elevadoras
JLG Iberica, S.L.
Trapadella, 2
P.I. Castellbisbal Sur
08755Castellbisbal, Barcelona
Spain
Phone: +34 93 772 4 700
Fax: +34 93 771 1762

JLG Sverige AB
Enkopingsvagen 150
Box 704
SE - 176 27 Jarfalla
Sweden
Phone: +46 (0)850 659 500
Fax: +46 (0)850 659 534

www.jlg.com